

Data Path : Z:\voasrv\HPCHEM1\MSVOA_X\Data\VX062025\
 Data File : VX046801.D
 Acq On : 20 Jun 2025 21:48
 Operator : JC/MD
 Sample : Q2385-01
 Misc : 5.0mL/MSVOA_X/WATER
 ALS Vial : 26 Sample Multiplier: 1

Instrument :
 MSVOA_X
 ClientSampleId :
 A5311

Quant Time: Jun 21 00:16:14 2025
 Quant Method : Z:\voasrv\HPCHEM1\MSVOA_X\Method\82X061725W.M
 Quant Title : SW846 8260
 QLast Update : Wed Jun 18 03:09:16 2025
 Response via : Initial Calibration

Compound	R.T.	QIon	Response	Conc	Units	Dev(Min)

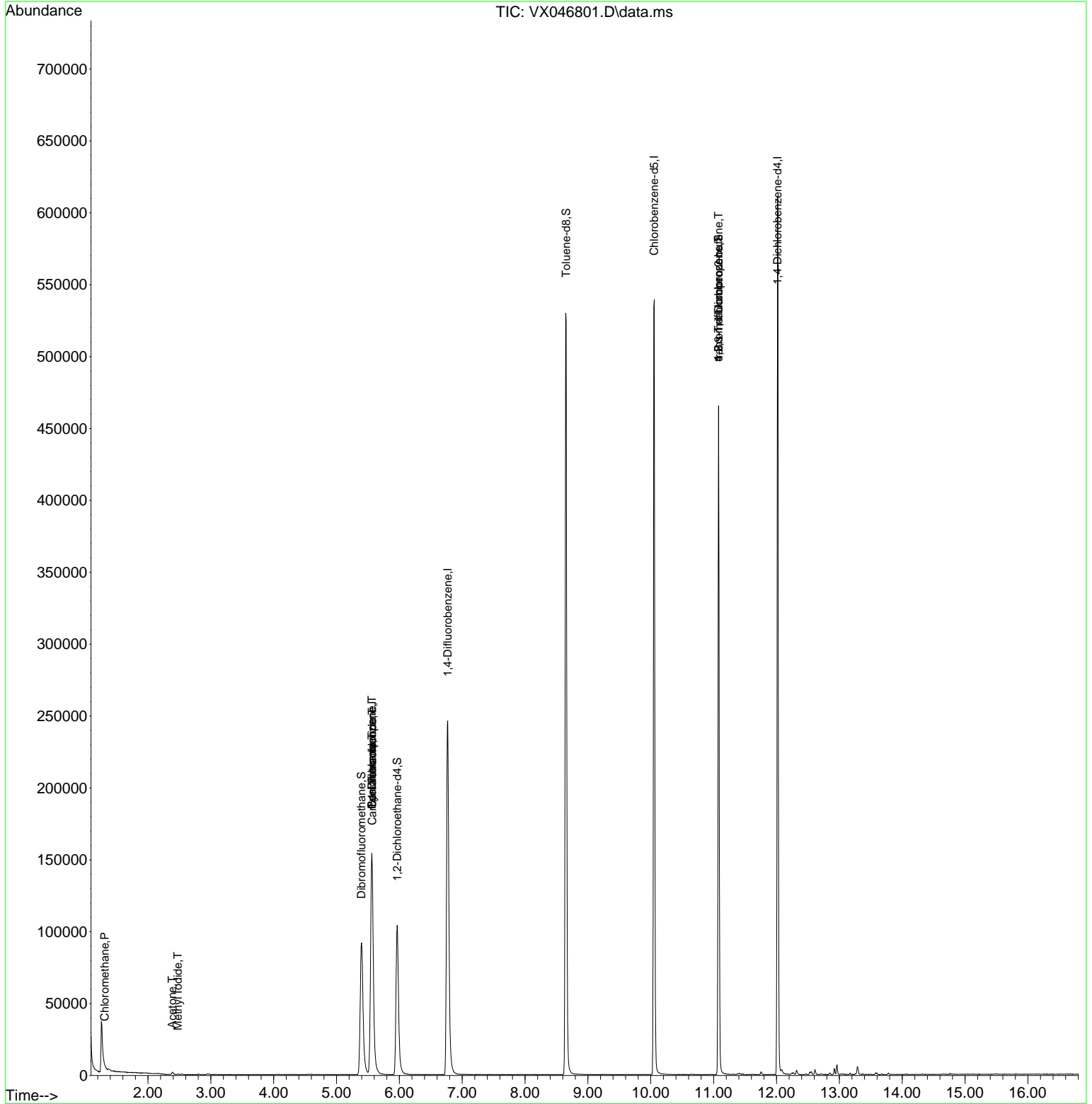
Internal Standards						
1) Pentafluorobenzene	5.562	168	158449	50.000	ug/l	0.00
34) 1,4-Difluorobenzene	6.769	114	275042	50.000	ug/l	0.00
63) Chlorobenzene-d5	10.055	117	254688	50.000	ug/l	0.00
72) 1,4-Dichlorobenzene-d4	12.018	152	124423	50.000	ug/l	0.00
System Monitoring Compounds						
33) 1,2-Dichloroethane-d4	5.964	65	108997	49.733	ug/l	0.00
Spiked Amount	50.000	Range 74 - 125	Recovery =	99.460%		
35) Dibromofluoromethane	5.397	113	89975	49.443	ug/l	0.00
Spiked Amount	50.000	Range 75 - 124	Recovery =	98.880%		
50) Toluene-d8	8.653	98	331936	50.770	ug/l	0.00
Spiked Amount	50.000	Range 86 - 113	Recovery =	101.540%		
62) 4-Bromofluorobenzene	11.079	95	123628	50.727	ug/l	0.00
Spiked Amount	50.000	Range 77 - 121	Recovery =	101.460%		
Target Compounds						
						Qvalue
3) Chloromethane	1.313	50	593	0.325	ug/l #	83
10) Methyl Iodide	2.477	142	194	4.412	ug/l #	81
16) Acetone	2.386	43	2218	3.035	ug/l	98
31) Cyclohexane	5.562	56	3016	0.919	ug/l #	1
36) 1,1-Dichloropropene	5.562	75	12528	4.769	ug/l #	50
38) Carbon Tetrachloride	5.568	117	16223	5.691	ug/l #	17
76) 1,2,3-Trichloropropane	11.079	75	63491	27.861	ug/l #	41
81) trans-1,4-Dichloro-2-b...	11.079	75	63491	78.752	ug/l #	7

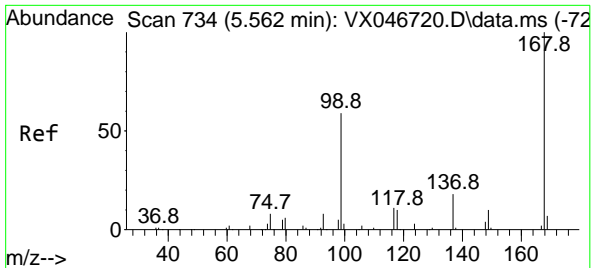
(#) = qualifier out of range (m) = manual integration (+) = signals summed

Data Path : Z:\voasrv\HPCHEM1\MSVOA_X\Data\VX062025\
 Data File : VX046801.D
 Acq On : 20 Jun 2025 21:48
 Operator : JC/MD
 Sample : Q2385-01
 Misc : 5.0mL/MSVOA_X/WATER
 ALS Vial : 26 Sample Multiplier: 1

Instrument :
 MSVOA_X
 ClientSampleId :
 A5311

Quant Time: Jun 21 00:16:14 2025
 Quant Method : Z:\voasrv\HPCHEM1\MSVOA_X\Method\82X061725W.M
 Quant Title : SW846 8260
 QLast Update : Wed Jun 18 03:09:16 2025
 Response via : Initial Calibration

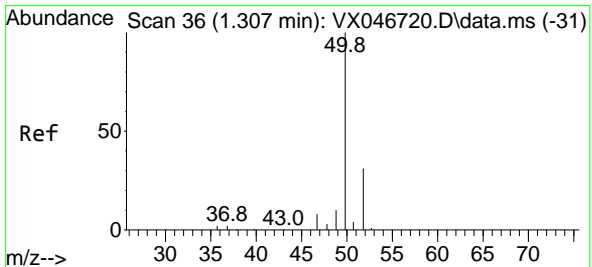
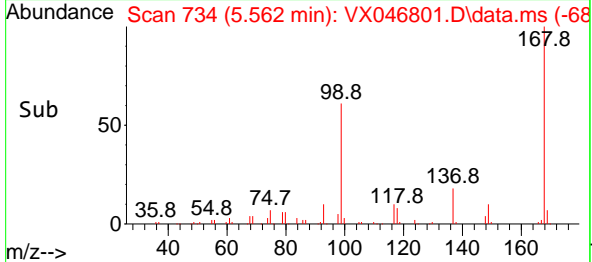
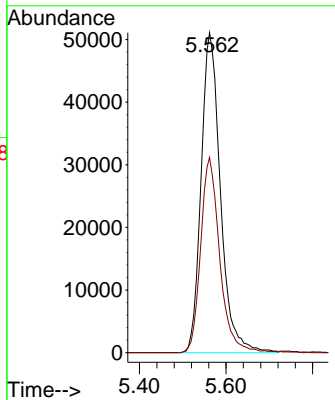
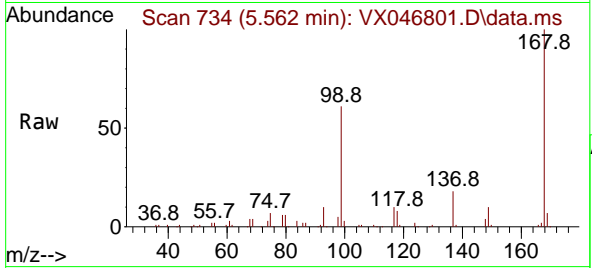




#1
 Pentafluorobenzene
 Concen: 50.000 ug/l
 RT: 5.562 min Scan# 71
 Delta R.T. -0.000 min
 Lab File: VX046801.D
 Acq: 20 Jun 2025 21:48

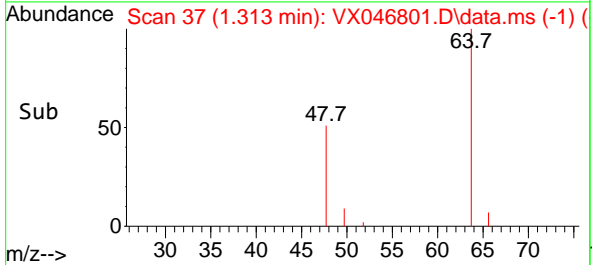
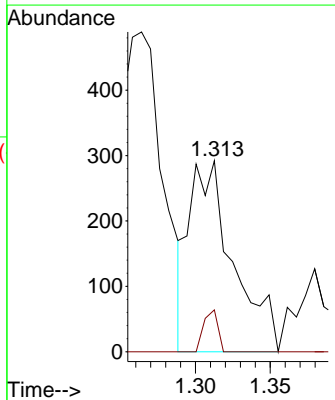
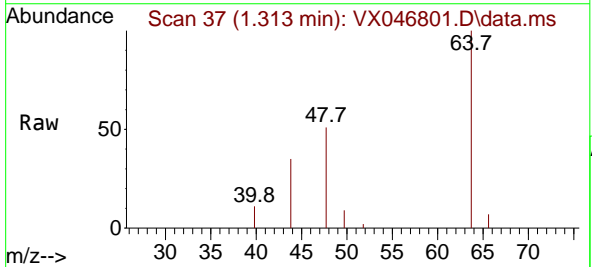
Instrument :
 MSVOA_X
 ClientSampleId :
 A5311

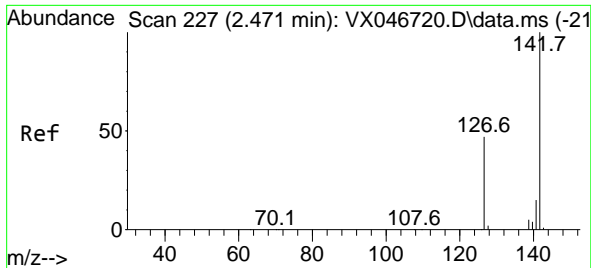
Tgt Ion:168 Resp: 158449
 Ion Ratio Lower Upper
 168 100
 99 61.1 48.5 72.7



#3
 Chloromethane
 Concen: 0.325 ug/l
 RT: 1.313 min Scan# 37
 Delta R.T. 0.006 min
 Lab File: VX046801.D
 Acq: 20 Jun 2025 21:48

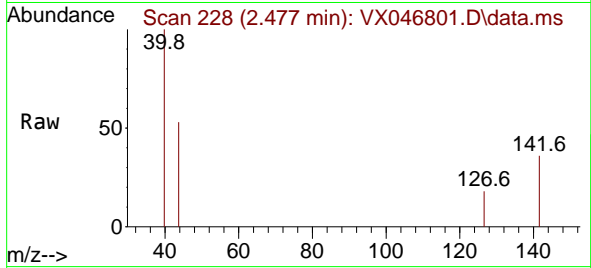
Tgt Ion: 50 Resp: 593
 Ion Ratio Lower Upper
 50 100
 52 21.9 24.9 37.3#





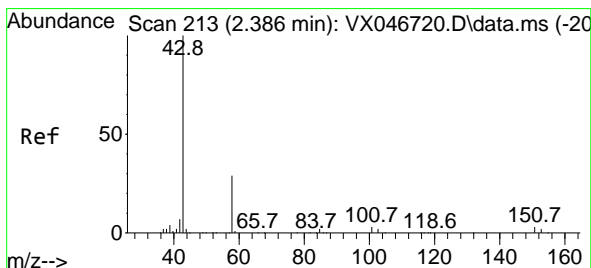
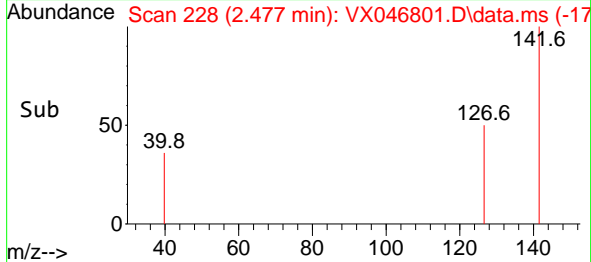
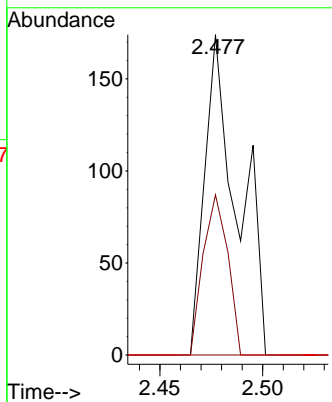
#10
Methyl Iodide
Concen: 4.412 ug/l
RT: 2.477 min Scan# 21
Delta R.T. 0.006 min
Lab File: VX046801.D
Acq: 20 Jun 2025 21:48

Instrument : MSVOA_X
ClientSampleId : A5311



Tgt Ion: 142 Resp: 194

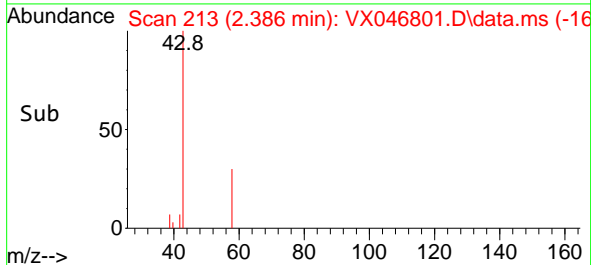
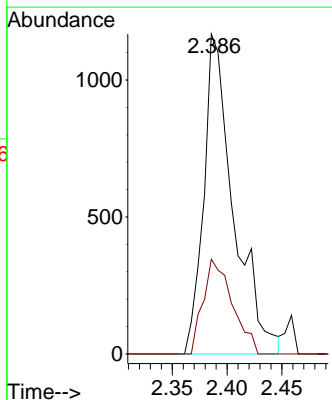
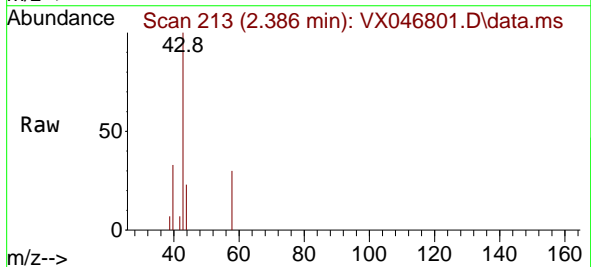
Ion	Ratio	Lower	Upper
142	100		
127	37.1	37.0	55.6
141	0.0	11.5	17.3#

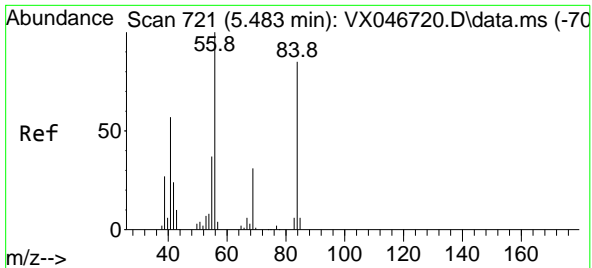


#16
Acetone
Concen: 3.035 ug/l
RT: 2.386 min Scan# 213
Delta R.T. -0.000 min
Lab File: VX046801.D
Acq: 20 Jun 2025 21:48

Tgt Ion: 43 Resp: 2218

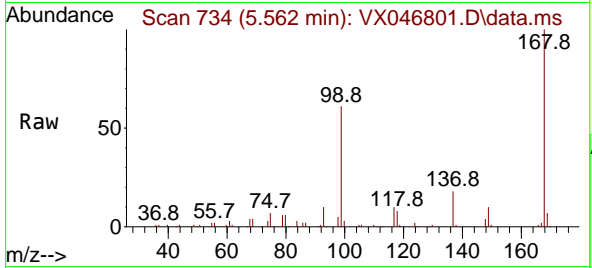
Ion	Ratio	Lower	Upper
43	100		
58	29.6	24.5	36.7



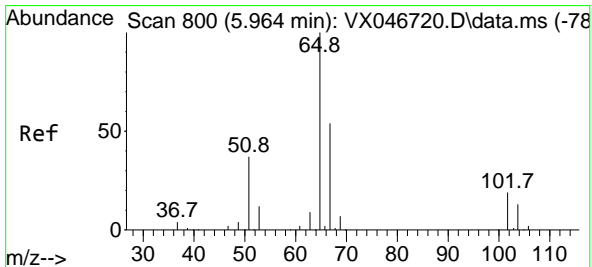
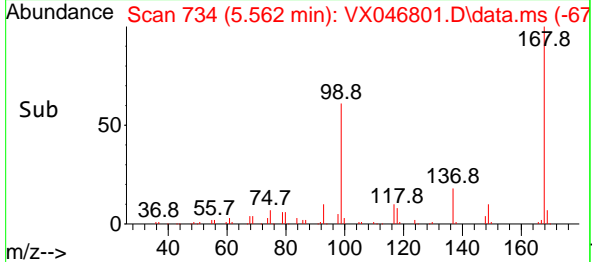
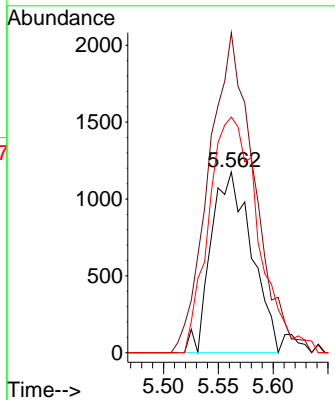


#31
 Cyclohexane
 Concen: 0.919 ug/l
 RT: 5.562 min Scan# 71
 Delta R.T. 0.079 min
 Lab File: VX046801.D
 Acq: 20 Jun 2025 21:48

Instrument :
 MSVOA_X
 ClientSampleId :
 A5311

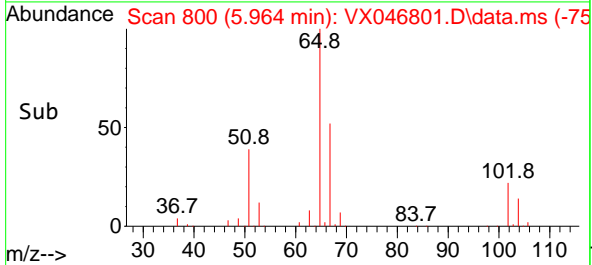
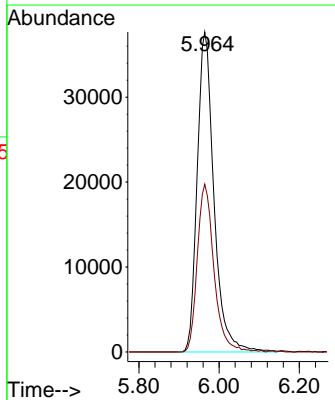
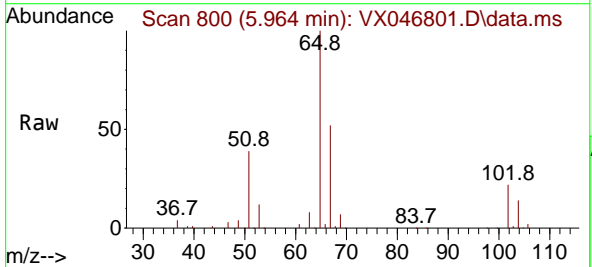


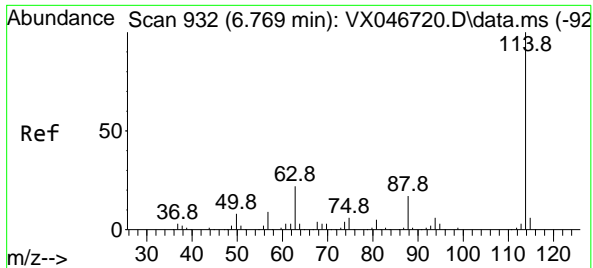
Tgt Ion: 56 Resp: 3016
 Ion Ratio Lower Upper
 56 100
 69 171.5 24.8 37.2#
 84 130.6 68.2 102.2#



#33
 1,2-Dichloroethane-d4
 Concen: 49.733 ug/l
 RT: 5.964 min Scan# 800
 Delta R.T. -0.000 min
 Lab File: VX046801.D
 Acq: 20 Jun 2025 21:48

Tgt Ion: 65 Resp: 108997
 Ion Ratio Lower Upper
 65 100
 67 52.4 0.0 105.4



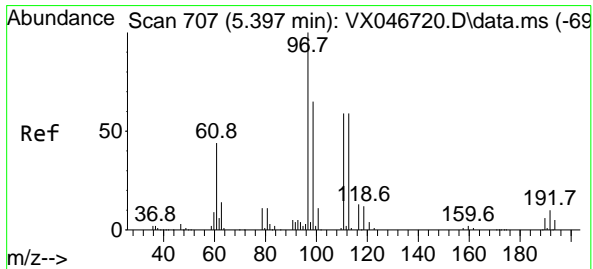
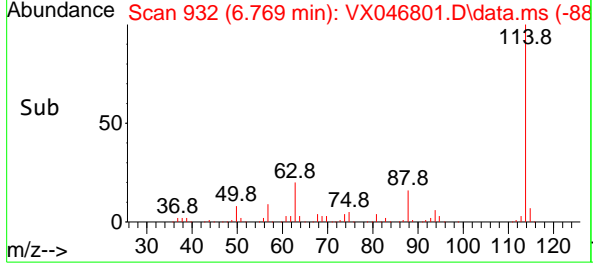
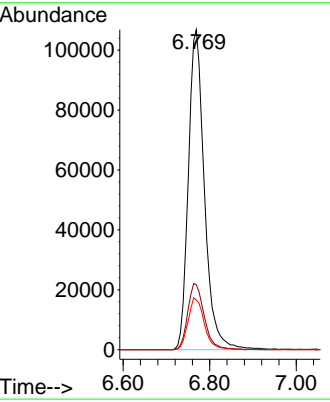
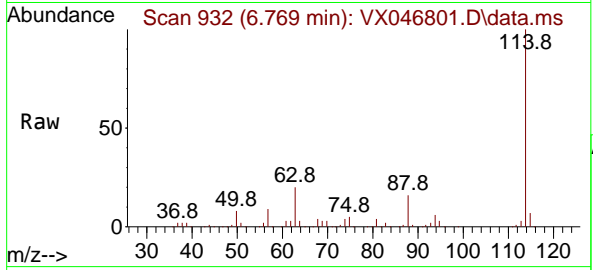


#34
 1,4-Difluorobenzene
 Concen: 50.000 ug/l
 RT: 6.769 min Scan# 911
 Delta R.T. -0.000 min
 Lab File: VX046801.D
 Acq: 20 Jun 2025 21:48

Instrument : MSVOA_X
 ClientSampleId : A5311

Tgt Ion:114 Resp: 275042

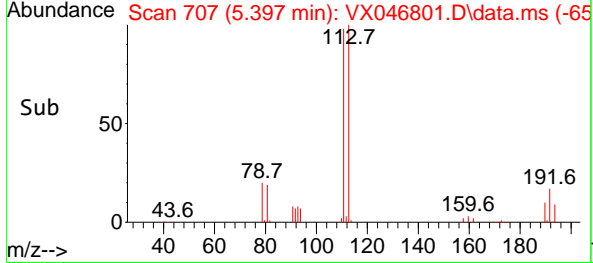
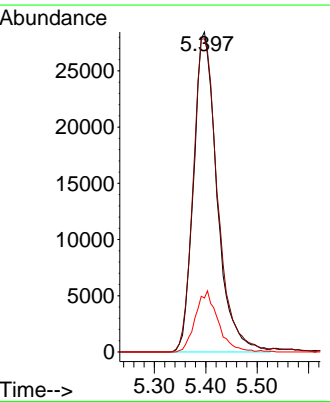
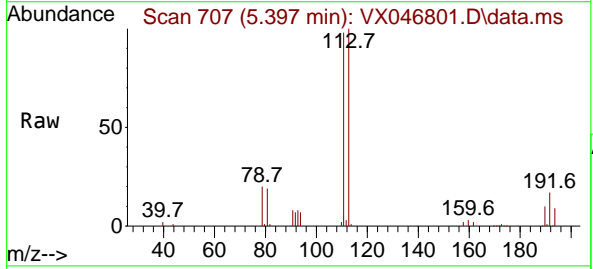
Ion	Ratio	Lower	Upper
114	100		
63	20.3	0.0	44.2
88	15.5	0.0	33.2

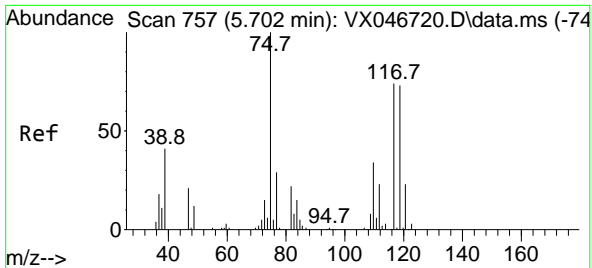


#35
 Dibromofluoromethane
 Concen: 49.443 ug/l
 RT: 5.397 min Scan# 707
 Delta R.T. -0.000 min
 Lab File: VX046801.D
 Acq: 20 Jun 2025 21:48

Tgt Ion:113 Resp: 89975

Ion	Ratio	Lower	Upper
113	100		
111	102.2	82.0	123.0
192	18.5	15.3	22.9

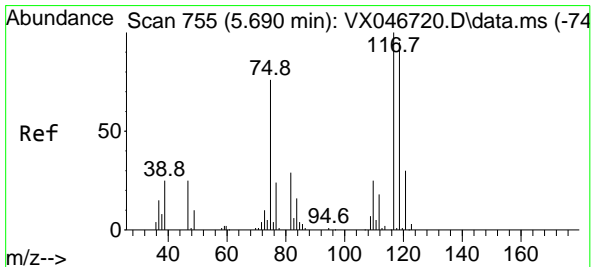
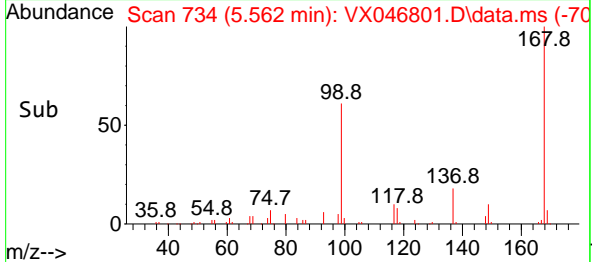
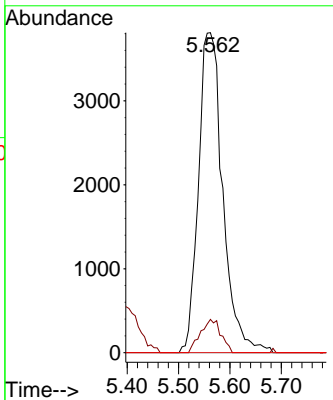
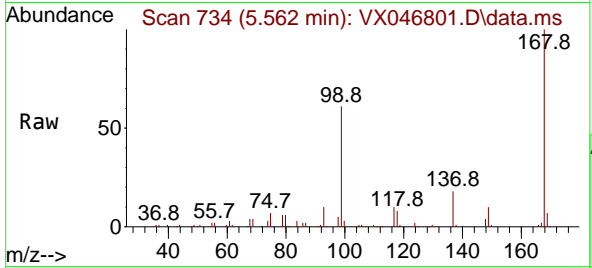




#36
 1,1-Dichloropropene
 Concen: 4.769 ug/l
 RT: 5.562 min Scan# 711
 Delta R.T. -0.140 min
 Lab File: VX046801.D
 Acq: 20 Jun 2025 21:48

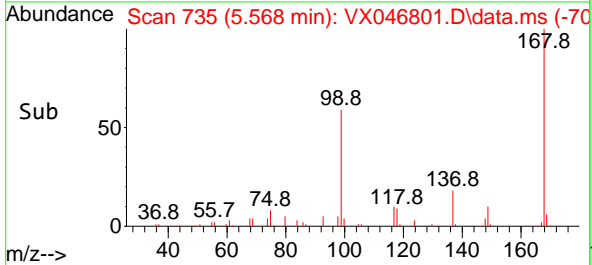
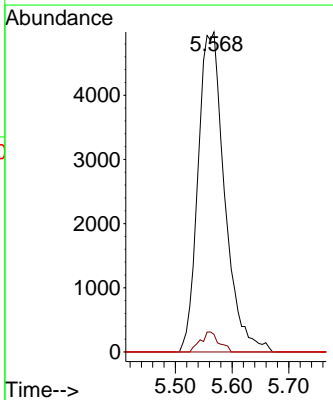
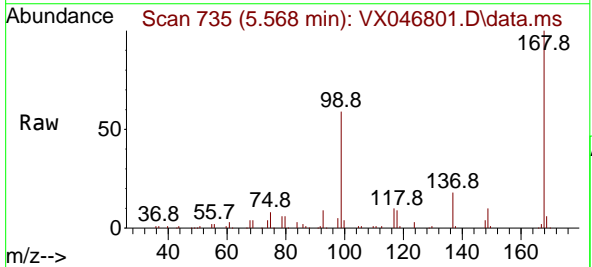
Instrument :
 MSVOA_X
 ClientSampleId :
 A5311

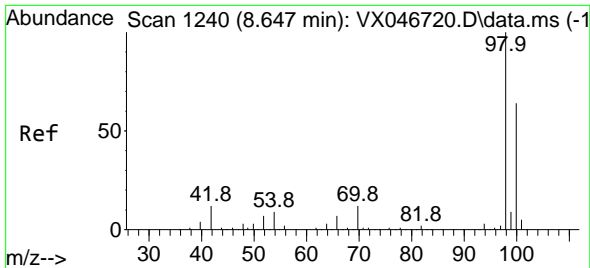
Tgt Ion	Resp	Lower	Upper
75	12528		
75	100		
110	8.8	17.2	51.5#
77	0.0	24.2	36.4#



#38
 Carbon Tetrachloride
 Concen: 5.691 ug/l
 RT: 5.568 min Scan# 735
 Delta R.T. -0.122 min
 Lab File: VX046801.D
 Acq: 20 Jun 2025 21:48

Tgt Ion	Resp	Lower	Upper
117	16223		
117	100		
119	5.5	75.2	112.8#
121	0.0	24.1	36.1#

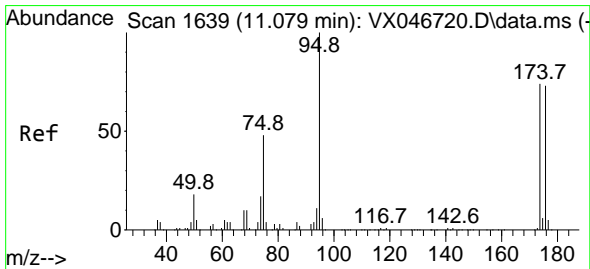
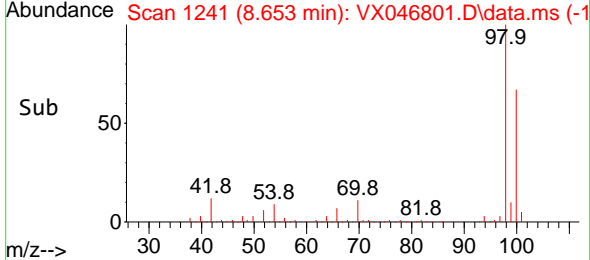
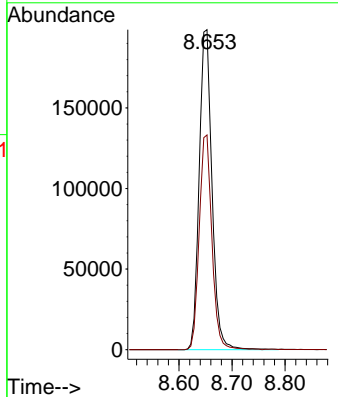
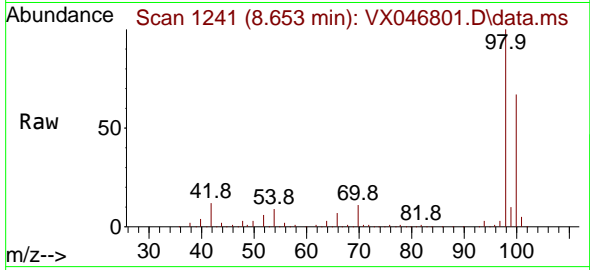




#50
 Toluene-d8
 Concen: 50.770 ug/l
 RT: 8.653 min Scan# 11
 Delta R.T. 0.006 min
 Lab File: VX046801.D
 Acq: 20 Jun 2025 21:48

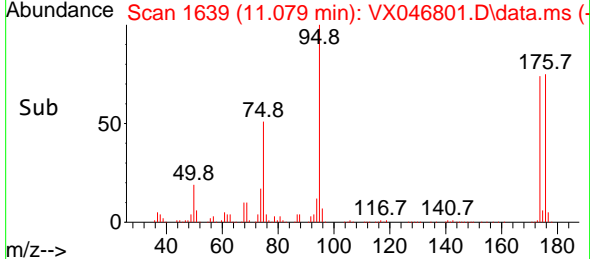
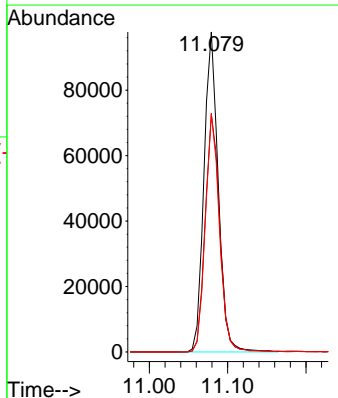
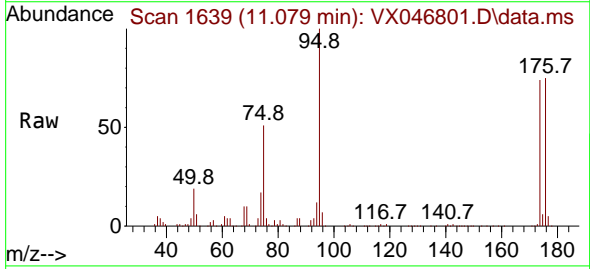
Instrument : MSVOA_X
 ClientSampleId : A5311

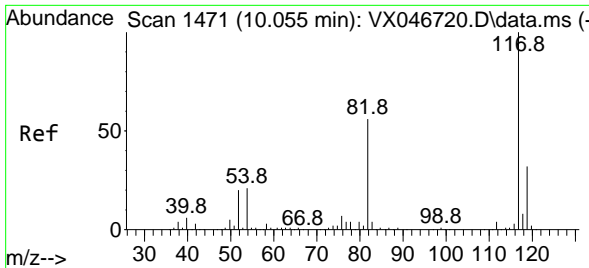
Tgt Ion: 98 Resp: 331936
 Ion Ratio Lower Upper
 98 100
 100 66.6 53.0 79.4



#62
 4-Bromofluorobenzene
 Concen: 50.727 ug/l
 RT: 11.079 min Scan# 1639
 Delta R.T. -0.000 min
 Lab File: VX046801.D
 Acq: 20 Jun 2025 21:48

Tgt Ion: 95 Resp: 123628
 Ion Ratio Lower Upper
 95 100
 174 76.0 0.0 150.4
 176 73.5 0.0 145.0



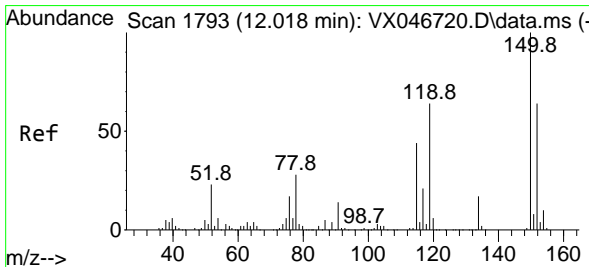
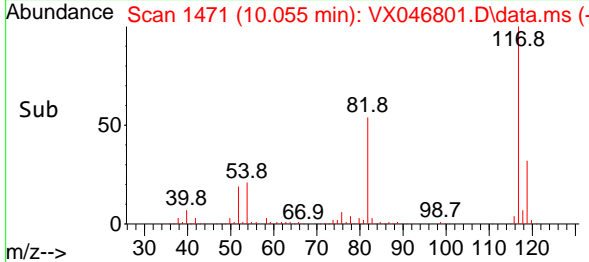
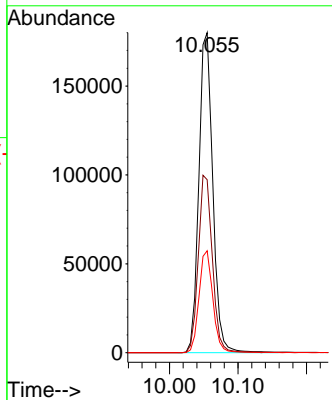
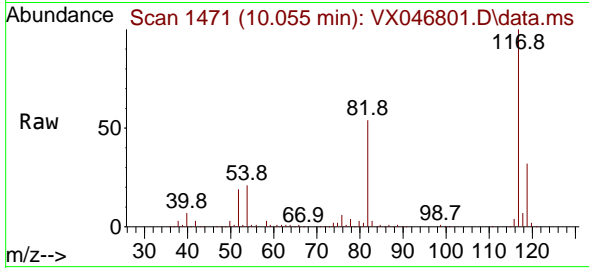


#63
 Chlorobenzene-d5
 Concen: 50.000 ug/l
 RT: 10.055 min Scan# 1471
 Delta R.T. -0.000 min
 Lab File: VX046801.D
 Acq: 20 Jun 2025 21:48

Instrument : MSVOA_X
 ClientSampleId : A5311

Tgt Ion:117 Resp: 254688

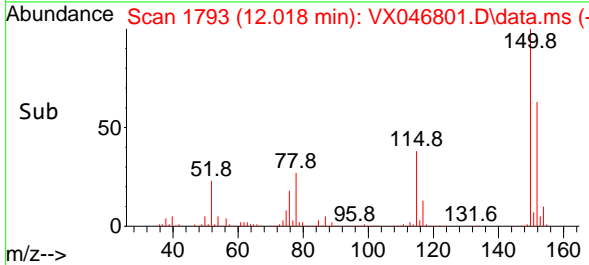
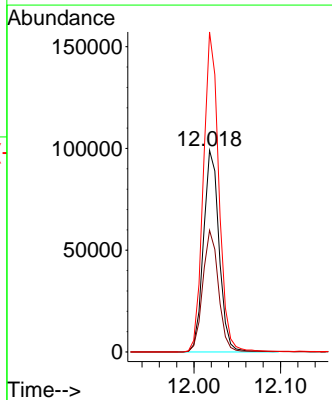
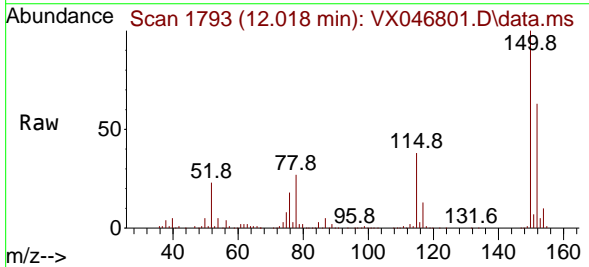
Ion	Ratio	Lower	Upper
117	100		
82	54.1	44.6	66.8
119	31.9	25.8	38.8

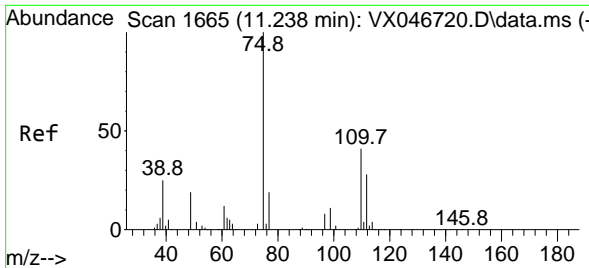


#72
 1,4-Dichlorobenzene-d4
 Concen: 50.000 ug/l
 RT: 12.018 min Scan# 1793
 Delta R.T. -0.000 min
 Lab File: VX046801.D
 Acq: 20 Jun 2025 21:48

Tgt Ion:152 Resp: 124423

Ion	Ratio	Lower	Upper
152	100		
115	61.0	43.2	129.6
150	157.3	0.0	346.8

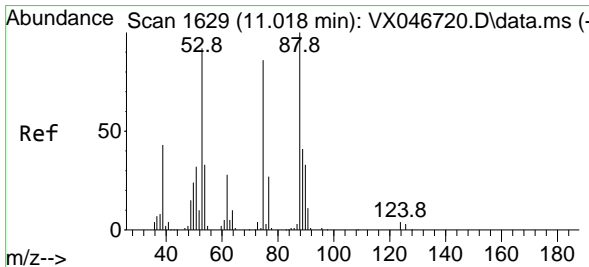
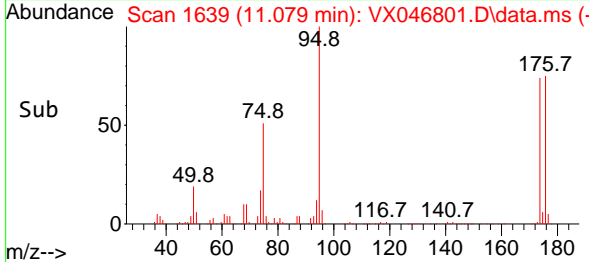
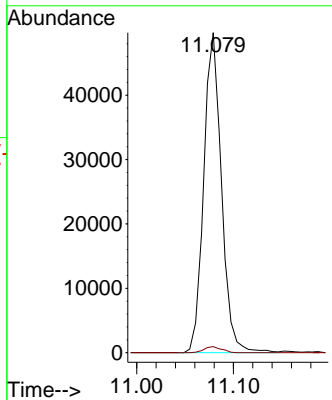
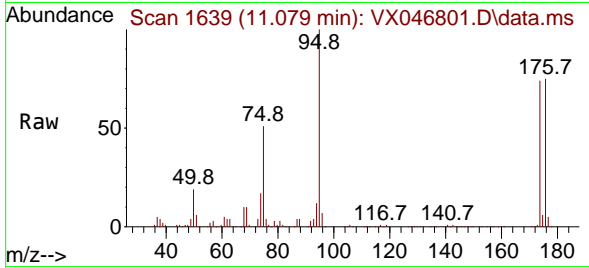




#76
 1,2,3-Trichloropropane
 Concen: 27.861 ug/l
 RT: 11.079 min Scan# 1639
 Delta R.T. -0.159 min
 Lab File: VX046801.D
 Acq: 20 Jun 2025 21:48

Instrument : MSVOA_X
 ClientSampleId : A5311

Tgt Ion: 75 Resp: 63491
 Ion Ratio Lower Upper
 75 100
 77 1.9 18.5 55.5#



#81
 trans-1,4-Dichloro-2-butene
 Concen: 78.752 ug/l
 RT: 11.079 min Scan# 1639
 Delta R.T. 0.061 min
 Lab File: VX046801.D
 Acq: 20 Jun 2025 21:48

Tgt Ion: 75 Resp: 63491
 Ion Ratio Lower Upper
 75 100
 53 0.0 86.8 130.2#
 89 0.0 36.9 55.3#

