

Data Path : Z:\VOASRV\HPCHEM1\MSVOA X\DATA\VX062119\
 Data File : VX010387.D
 Acq On : 21 Jun 2019 16:11
 Operator : JC/SP
 Sample : K3473-05
 Misc : 5.0mL/MSVOA X/WATER
 ALS Vial : 15 Sample Multiplier: 1

Instrument :
 MSVOA_X
 ClientSampleId :
 DUP-1

Manual Integrations
 APPROVED

MMDadoda
 6/24/2019 11:23:13 AM

Quant Time: Jun 22 00:38:39 2019
 Quant Method : Z:\VOASRV\HPCHEM1\MSVOA_X\METHOD\82X061919W.M
 Quant Title : SW846 8260
 QLast Update : Thu Jun 20 03:31:56 2019
 Response via : Initial Calibration

Internal Standards	R.T.	QIon	Response	Conc	Units	Dev(Min)
1) Pentafluorobenzene	5.67	168	285779	50.00	ug/l	0.00
34) 1,4-Difluorobenzene	6.86	114	436598	50.00	ug/l	0.00
63) Chlorobenzene-d5	10.11	117	391713	50.00	ug/l	0.00
72) 1,4-Dichlorobenzene-d4	12.08	152	177507	50.00	ug/l	0.00

System Monitoring Compounds

33) 1,2-Dichloroethane-d4	6.06	65	133295	49.75	ug/l	0.00
Spiked Amount	50.000		Recovery	=	99.50%	
35) Dibromofluoromethane	5.50	113	134391	50.31	ug/l	0.00
Spiked Amount	50.000		Recovery	=	100.62%	
50) Toluene-d8	8.71	98	513876	50.28	ug/l	0.00
Spiked Amount	50.000		Recovery	=	100.56%	
62) 4-Bromofluorobenzene	11.13	95	171249	46.41	ug/l	0.00
Spiked Amount	50.000		Recovery	=	92.82%	

Target Compounds

Target Compounds	R.T.	QIon	Response	Conc	Units	Qvalue
4) Vinyl Chloride	1.41	62	3453	1.363	ug/l #	80
12) 1,1-Dichloroethene	2.37	96	44868	18.113	ug/l	99
16) Acetone	2.44	43	2945	2.193	ug/l #	83
24) 1,1-Dichloroethane	3.70	63	71310	16.778	ug/l	98
27) cis-1,2-Dichloroethene	4.60	96	8247	2.679	ug/l	92
32) 1,1,1-Trichloroethane	5.49	97	11506	2.850	ug/l	96
39) Methylcyclohexane	7.47	83	2350	0.515	ug/l #	82
42) 1,2-Dichloroethane	6.20	62	3597	1.093	ug/l	90
44) Trichloroethene	7.22	130	1590	0.492	ug/l	85
49) 1,4-Dioxane	7.74	88	10838	137.066	ug/l	98
78) n-propylbenzene	11.36	91	4562	0.345	ug/l	99
85) sec-Butylbenzene	11.94	105	5727	0.490	ug/l	100
89) n-Butylbenzene	12.39	91	2496m	0.272	ug/l	

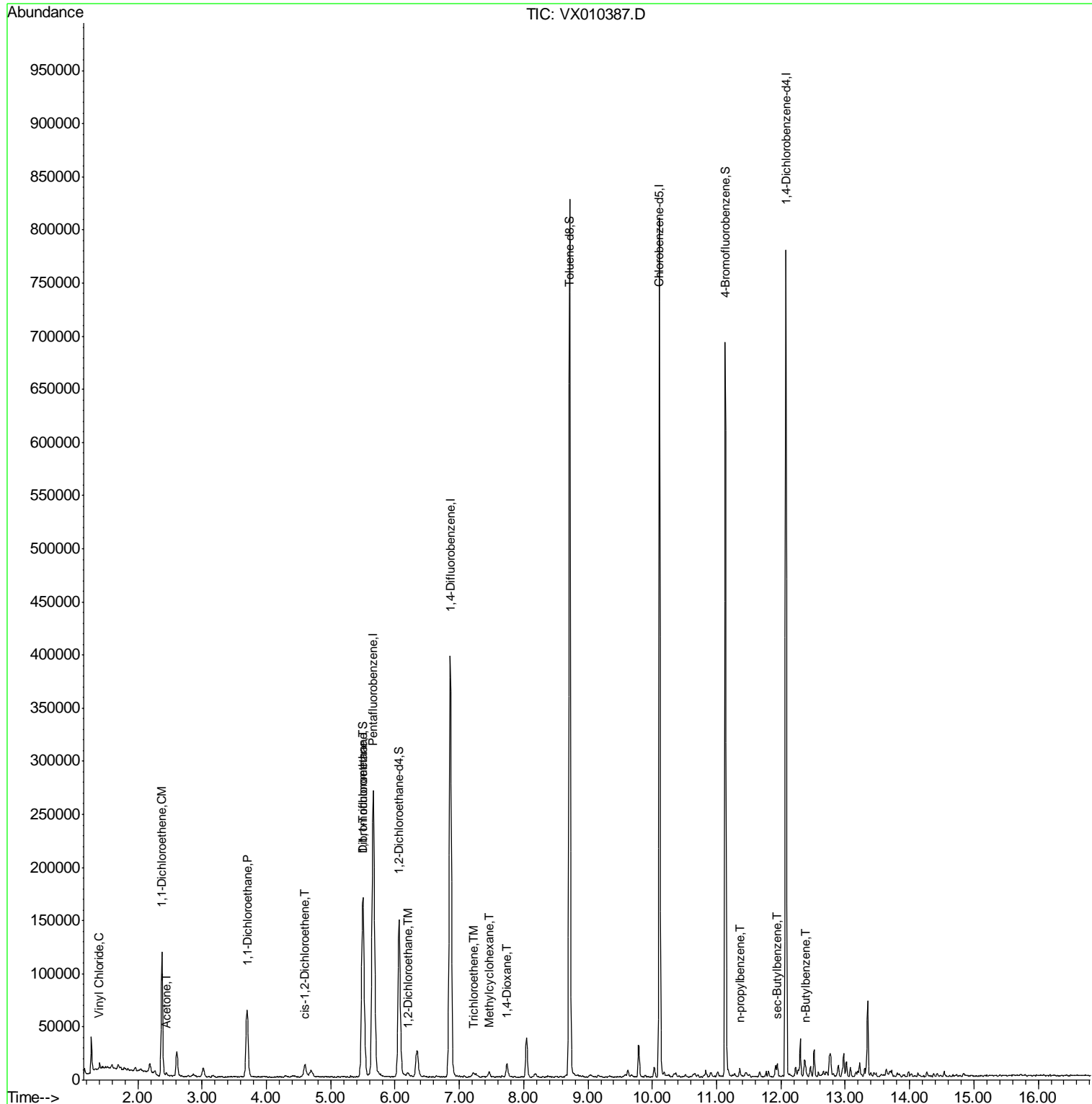
(#) = qualifier out of range (m) = manual integration (+) = signals summed

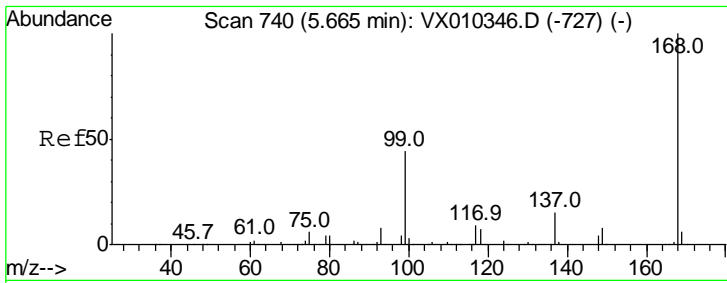
Data Path : Z:\VOASRV\HPCHEM1\MSVOA X\DATA\VX062119\
 Data File : VX010387.D
 Acq On : 21 Jun 2019 16:11
 Operator : JC/SP
 Sample : K3473-05
 Misc : 5.0mL/MSVOA X/WATER
 ALS Vial : 15 Sample Multiplier: 1

Instrument :
 MSVOA_X
 Client Sampled :
 DUP-1

Manual Integrations
 APPROVED
 MMDadoda
 6/24/2019 11:23:13 AM

Quant Time: Jun 22 00:38:39 2019
 Quant Method : Z:\VOASRV\HPCHEM1\MSVOA_X\METHOD\82X061919W.M
 Quant Title : SW846 8260
 QLast Update : Thu Jun 20 03:31:56 2019
 Response via : Initial Calibration





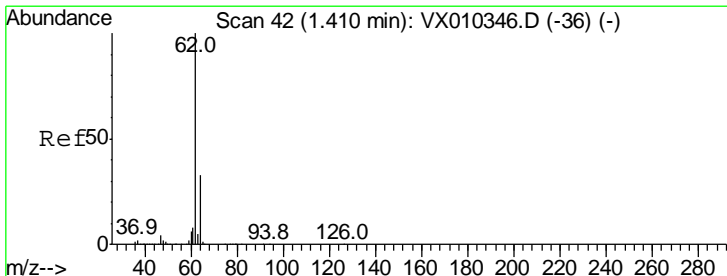
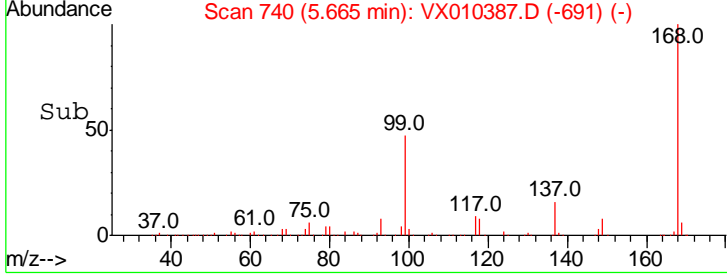
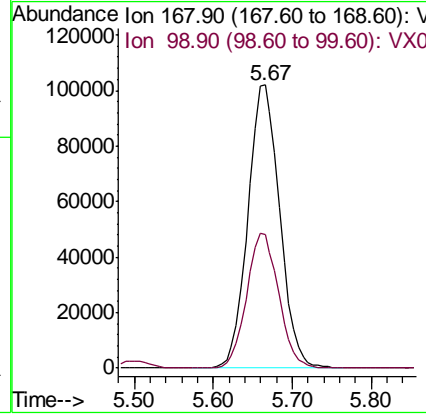
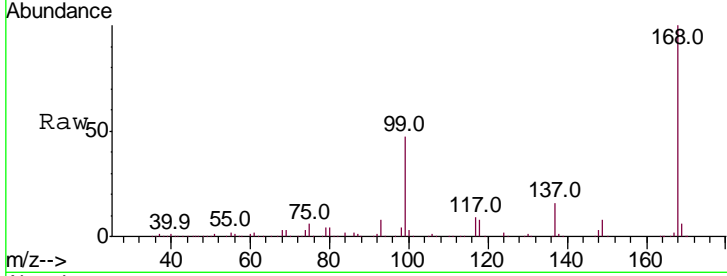
#1
 Pentafluorobenzene
 Concen: 50.000 ug/l
 RT: 5.67 min Scan# 740
 Delta R.T. 0.00 min
 Lab File: VX010387.D
 Acq: 21 Jun 2019 16:11

Instrument :
 MSVOA_X
 ClientSampled :
 DUP-1

Tgt Ion	Resp	Lower	Upper
168	100		
99	47.2	35.5	53.3

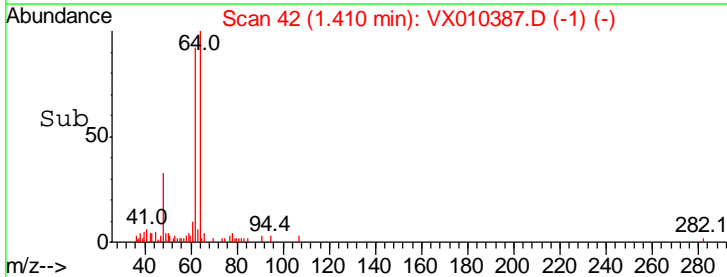
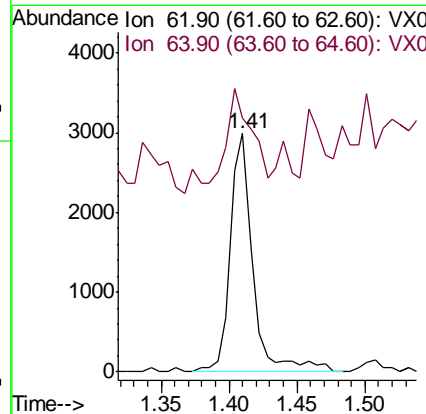
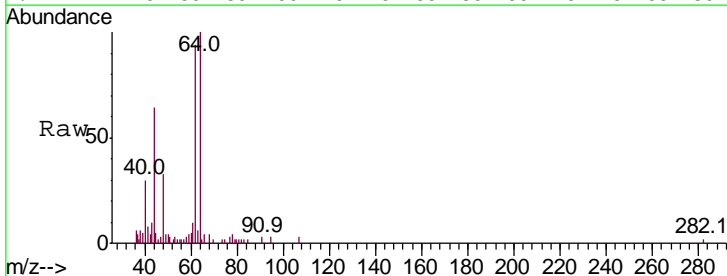
Manual Integrations
 APPROVED

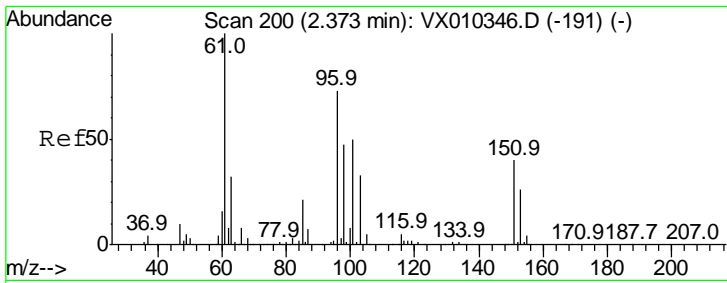
MMDadoda
 6/24/2019 11:23:13 AM



#4
 Vinyl Chloride
 Concen: 1.363 ug/l
 RT: 1.41 min Scan# 42
 Delta R.T. 0.00 min
 Lab File: VX010387.D
 Acq: 21 Jun 2019 16:11

Tgt Ion	Resp	Lower	Upper
62	100		
64	21.7	26.2	39.4#



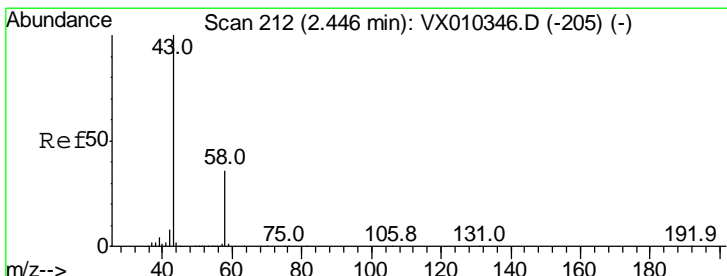
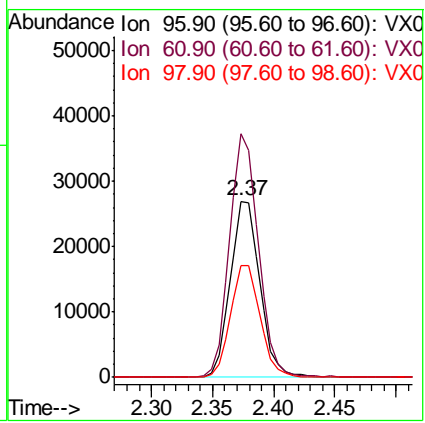
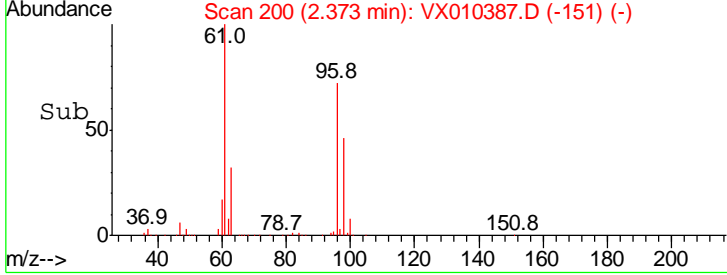
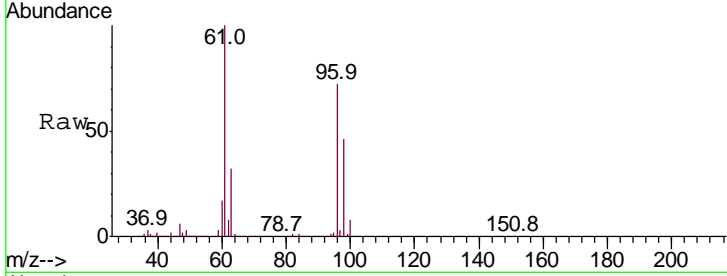


#12
 1,1-Dichloroethene
 Concen: 18.113 ug/l
 RT: 2.37 min Scan# 200
 Delta R.T. 0.00 min
 Lab File: VX010387.D
 Acq: 21 Jun 2019 16:11

Instrument :
 MSVOA_X
 ClientSampled :
 DUP-1

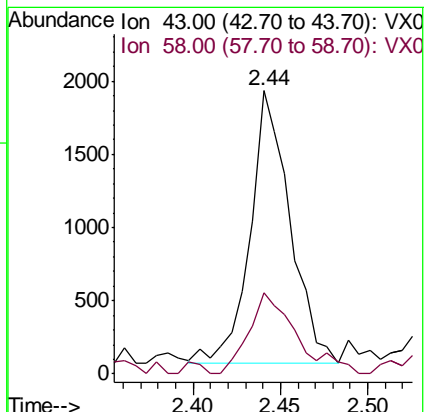
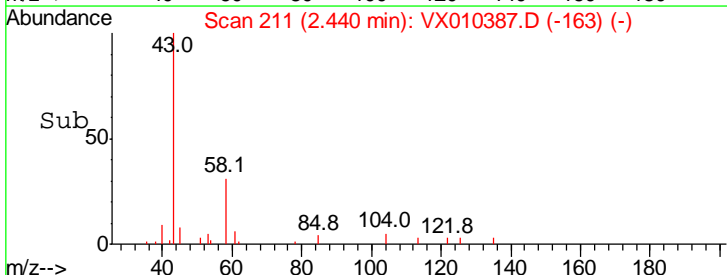
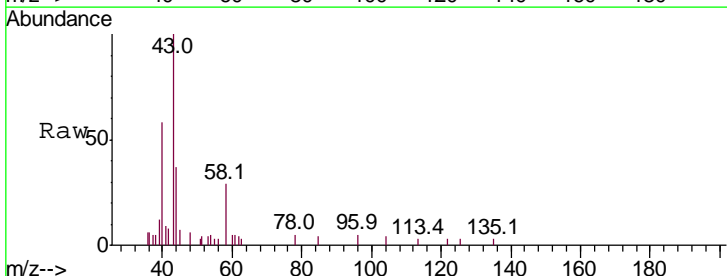
Tgt Ion	Resp	Lower	Upper
96	44868		
96	100		
61	138.3	109.2	163.8
98	63.8	51.1	76.7

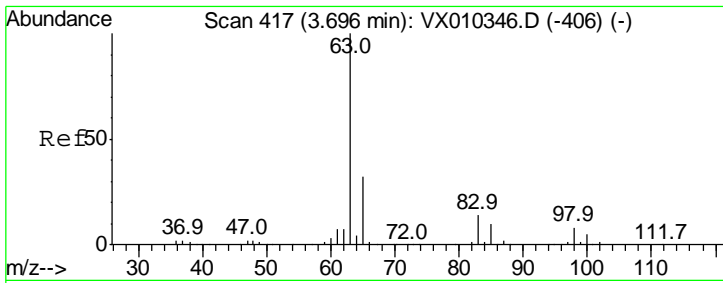
Manual Integrations
APPROVED
 MMDadoda
 6/24/2019 11:23:13 AM



#16
 Acetone
 Concen: 2.193 ug/l
 RT: 2.44 min Scan# 211
 Delta R.T. -0.01 min
 Lab File: VX010387.D
 Acq: 21 Jun 2019 16:11

Tgt Ion	Resp	Lower	Upper
43	2945		
43	100		
58	25.9	28.9	43.3#





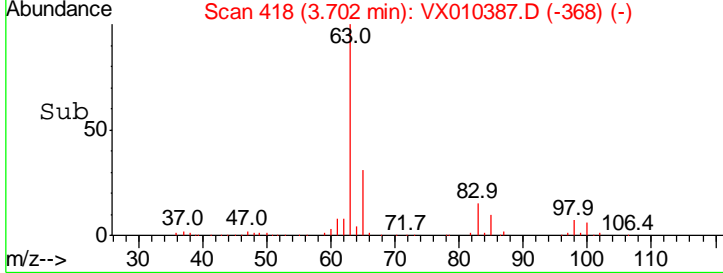
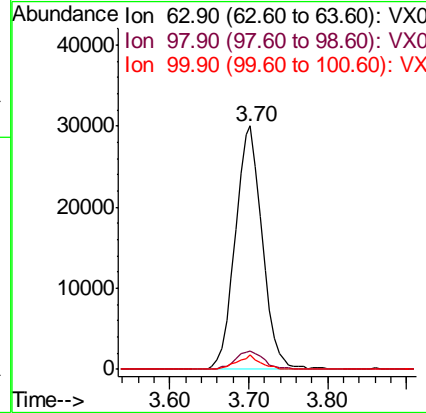
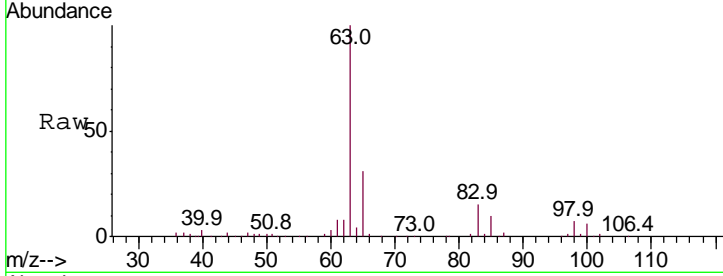
#24
 1,1-Dichloroethane
 Concen: 16.778 ug/l
 RT: 3.70 min Scan# 418
 Delta R.T. 0.01 min
 Lab File: VX010387.D
 Acq: 21 Jun 2019 16:11

Instrument :
 MSVOA_X
 ClientSampled :
 DUP-1

Tgt Ion	Resp	Lower	Upper
63	100		
98	7.4	3.9	11.7
100	5.7	2.4	7.1

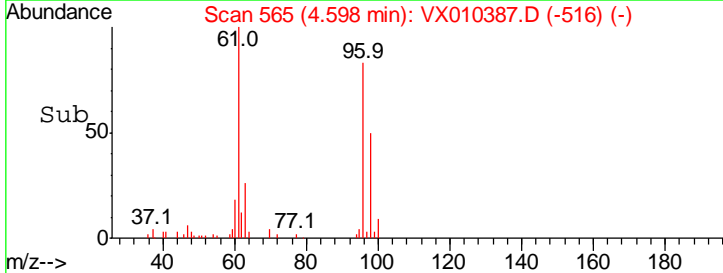
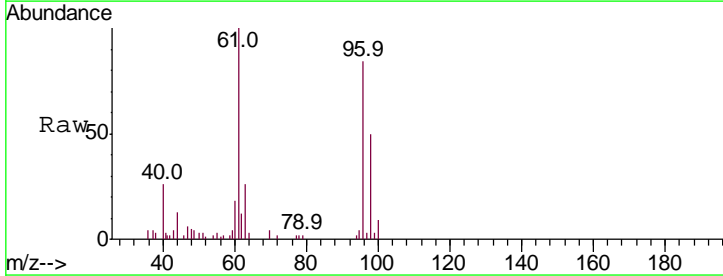
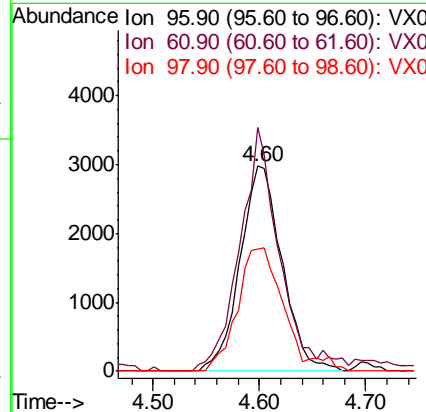
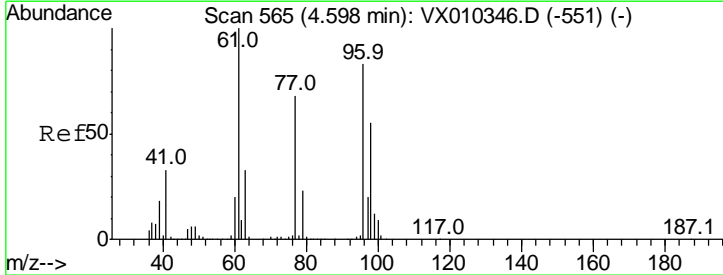
Manual Integrations
 APPROVED

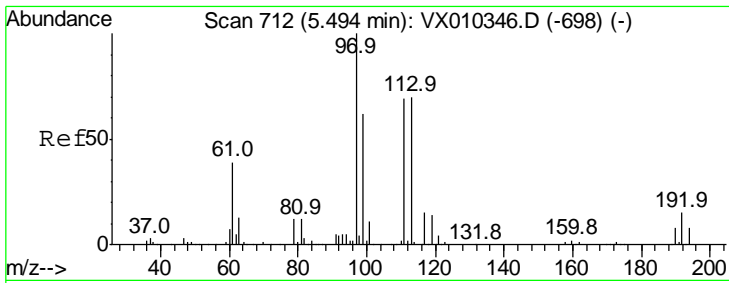
MMDadoda
 6/24/2019 11:23:13 AM



#27
 cis-1,2-Dichloroethene
 Concen: 2.679 ug/l
 RT: 4.60 min Scan# 565
 Delta R.T. 0.00 min
 Lab File: VX010387.D
 Acq: 21 Jun 2019 16:11

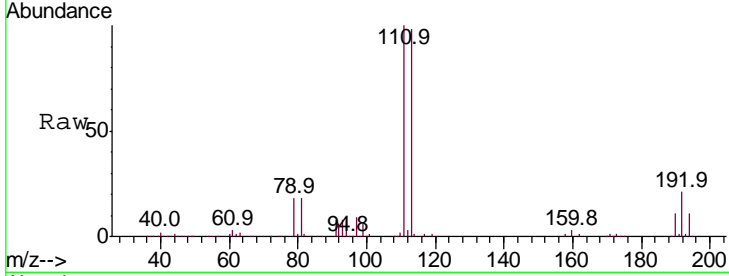
Tgt Ion	Resp	Lower	Upper
96	100		
61	112.4	0.0	251.8
98	63.4	0.0	129.4





#32
 1,1,1-Trichloroethane
 Concen: 2.850 ug/l
 RT: 5.49 min Scan# 712
 Delta R.T. 0.00 min
 Lab File: VX010387.D
 Acq: 21 Jun 2019 16:11

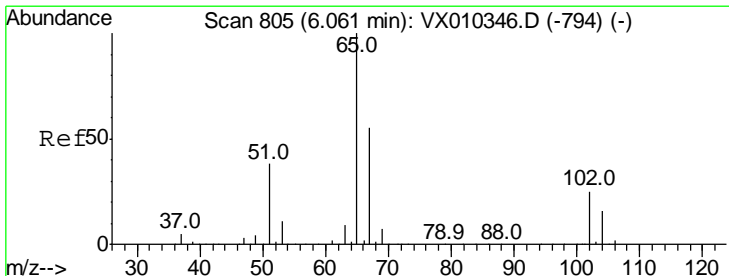
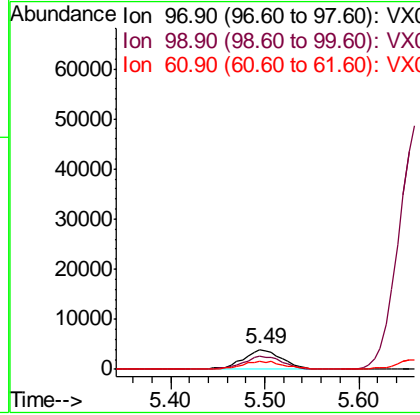
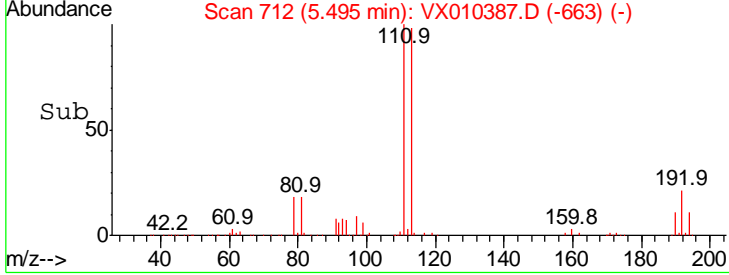
Instrument :
 MSVOA_X
 ClientSampled :
 DUP-1



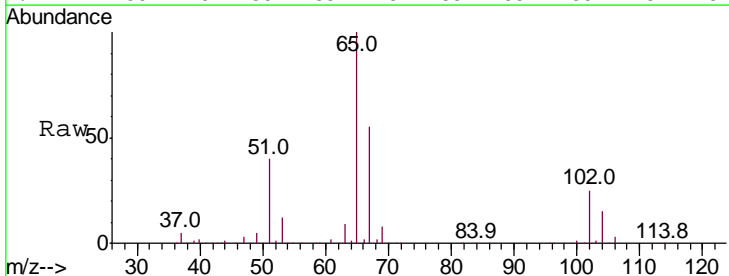
Tgt Ion: 97 Resp: 11506

Ion	Ratio	Lower	Upper
97	100		
99	66.9	51.8	77.8
61	43.1	32.1	48.1

Manual Integrations
APPROVED
 MMDadoda
 6/24/2019 11:23:13 AM

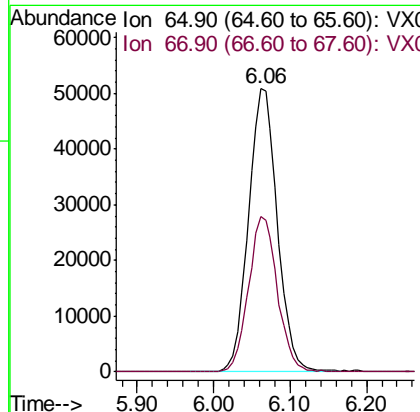
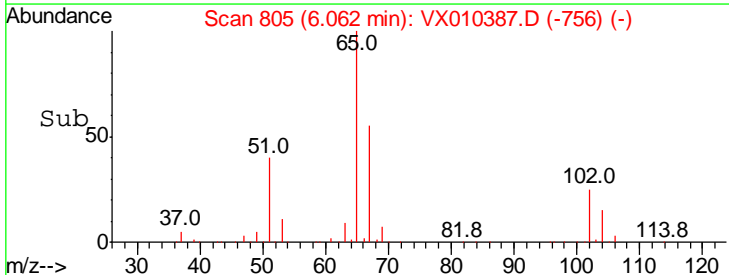


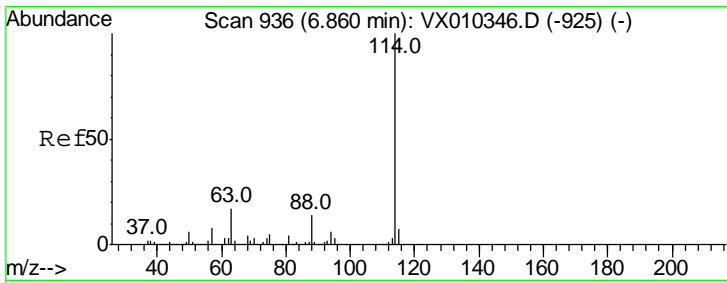
#33
 1,2-Dichloroethane-d4
 Concen: 49.747 ug/l
 RT: 6.06 min Scan# 805
 Delta R.T. 0.00 min
 Lab File: VX010387.D
 Acq: 21 Jun 2019 16:11



Tgt Ion: 65 Resp: 133295

Ion	Ratio	Lower	Upper
65	100		
67	55.0	0.0	110.2





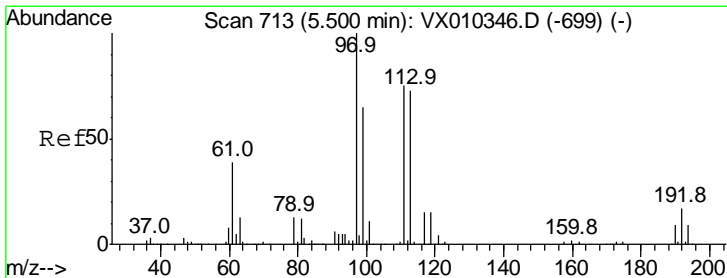
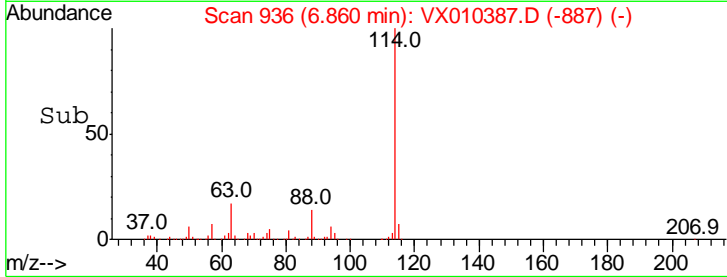
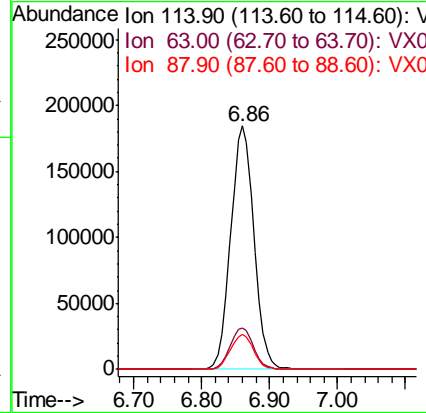
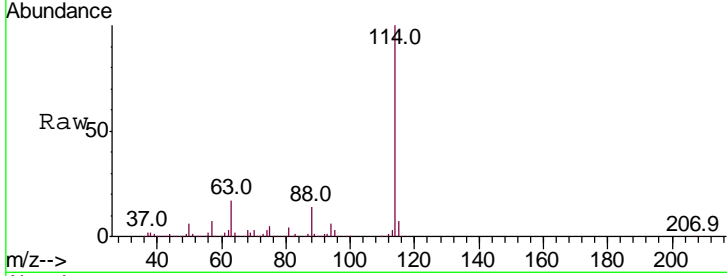
#34
 1,4-Difluorobenzene
 Concen: 50.000 ug/l
 RT: 6.86 min Scan# 936
 Delta R.T. 0.00 min
 Lab File: VX010387.D
 Acq: 21 Jun 2019 16:11

Instrument :
 MSVOA_X
 ClientSampled :
 DUP-1

Tgt Ion	Resp	Lower	Upper
114	100		
63	17.1	0.0	33.8
88	14.2	0.0	27.6

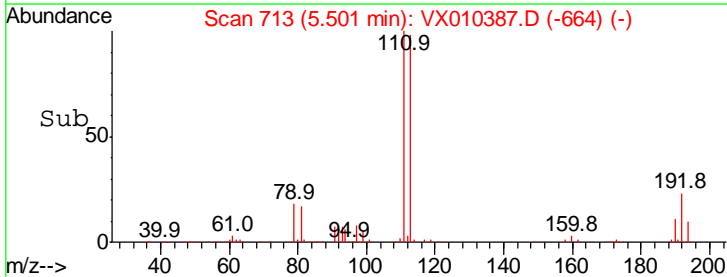
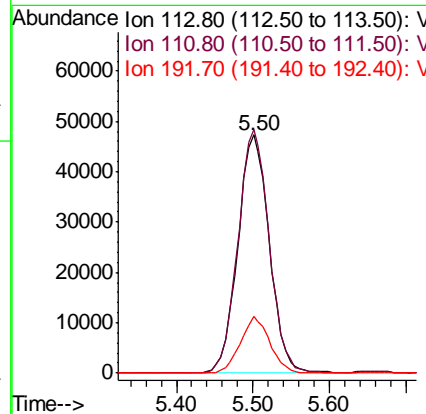
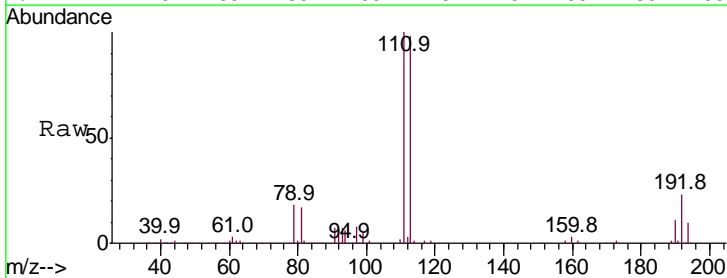
Manual Integrations
 APPROVED

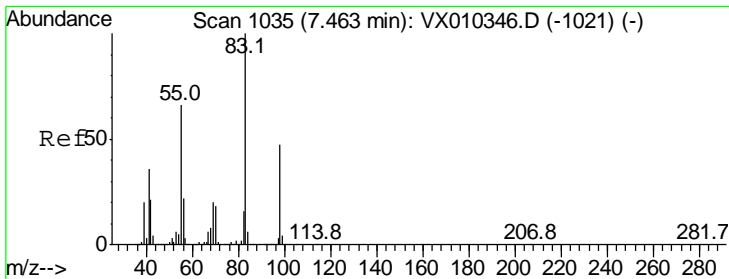
MMDadoda
 6/24/2019 11:23:13 AM



#35
 Dibromofluoromethane
 Concen: 50.310 ug/l
 RT: 5.50 min Scan# 713
 Delta R.T. 0.00 min
 Lab File: VX010387.D
 Acq: 21 Jun 2019 16:11

Tgt Ion	Resp	Lower	Upper
113	100		
111	101.7	81.2	121.8
192	22.4	18.6	27.8





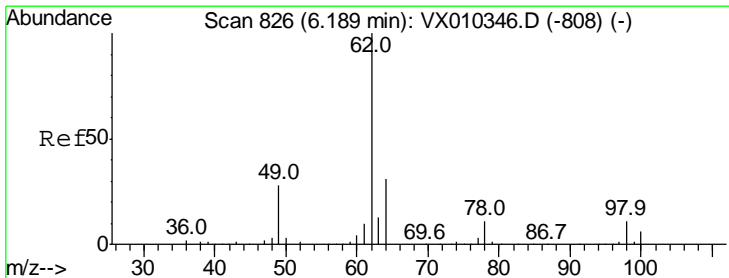
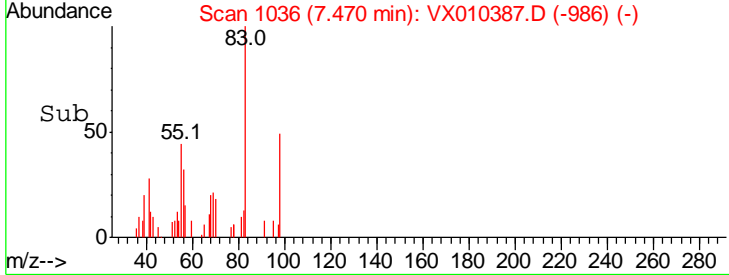
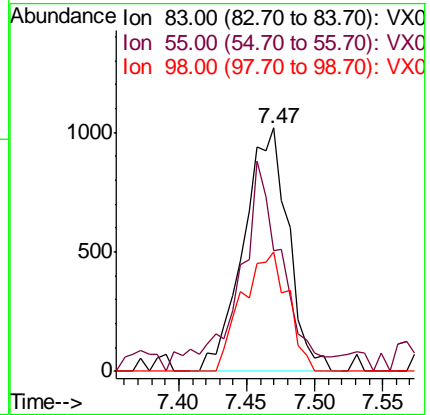
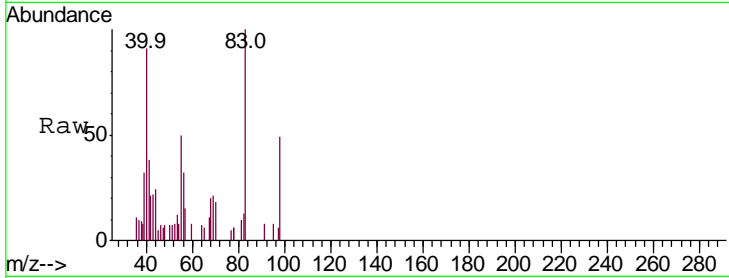
#39
 Methylcyclohexane
 Concen: 0.515 ug/l
 RT: 7.47 min Scan# 1036
 Delta R.T. 0.01 min
 Lab File: VX010387.D
 Acq: 21 Jun 2019 16:11

Instrument :
 MSVOA_X
 ClientSampled :
 DUP-1

Tgt Ion	Ratio	Lower	Upper
83	100		
55	43.1	53.0	79.6#
98	49.2	37.8	56.8

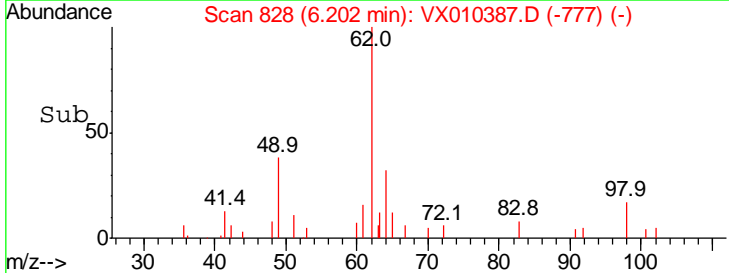
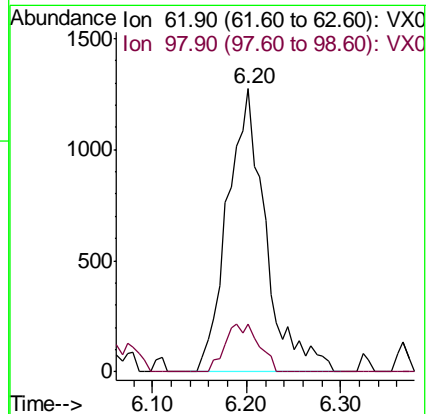
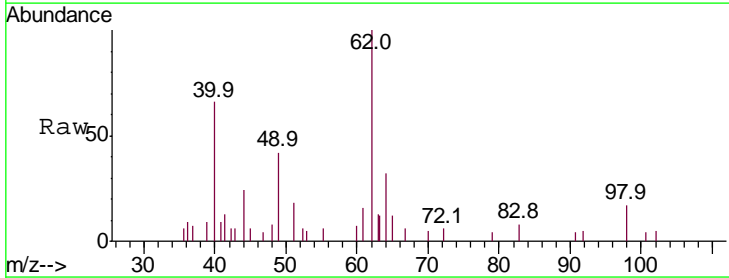
Manual Integrations
 APPROVED

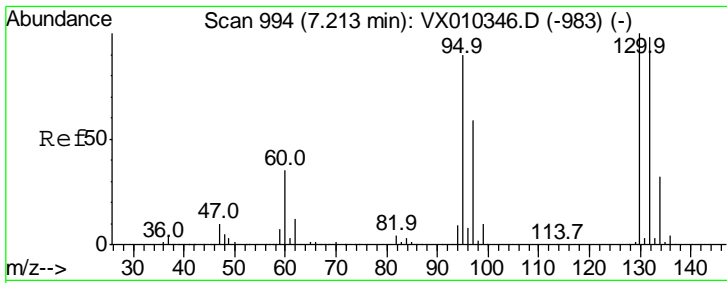
MMDadoda
 6/24/2019 11:23:13 AM



#42
 1,2-Dichloroethane
 Concen: 1.093 ug/l
 RT: 6.20 min Scan# 828
 Delta R.T. 0.01 min
 Lab File: VX010387.D
 Acq: 21 Jun 2019 16:11

Tgt Ion	Ratio	Lower	Upper
62	100		
98	14.9	0.0	22.2





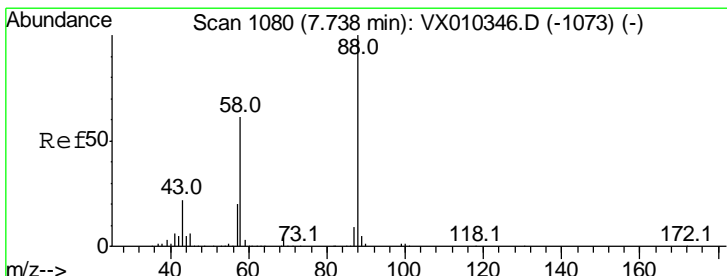
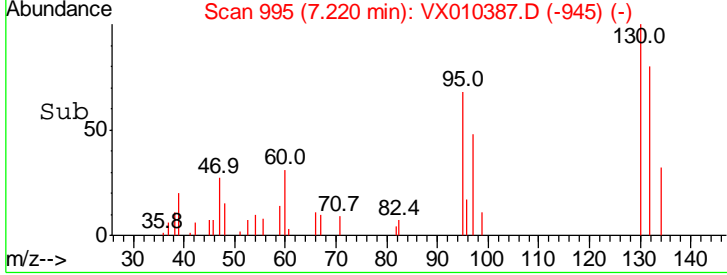
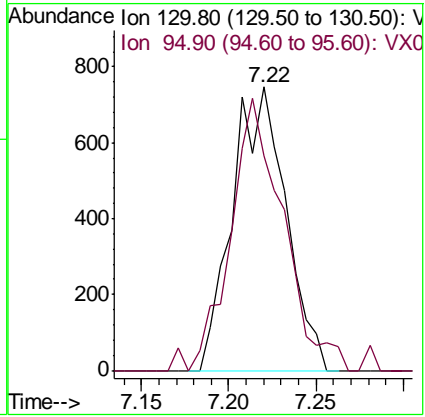
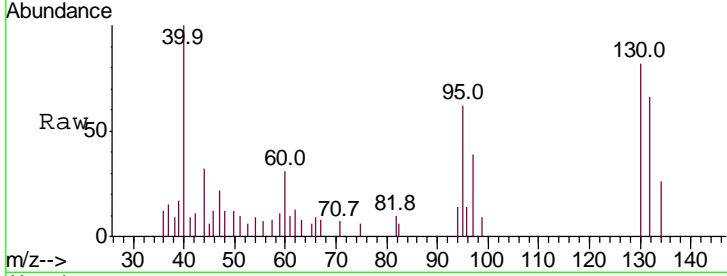
#44
 Trichloroethene
 Concen: 0.492 ug/l
 RT: 7.22 min Scan# 995
 Delta R.T. 0.01 min
 Lab File: VX010387.D
 Acq: 21 Jun 2019 16:11

Instrument :
 MSVOA_X
 ClientSampled :
 DUP-1

Tgt Ion: 130 Resp: 1590

Ion	Ratio	Lower	Upper
130	100		
95	75.8	0.0	180.8

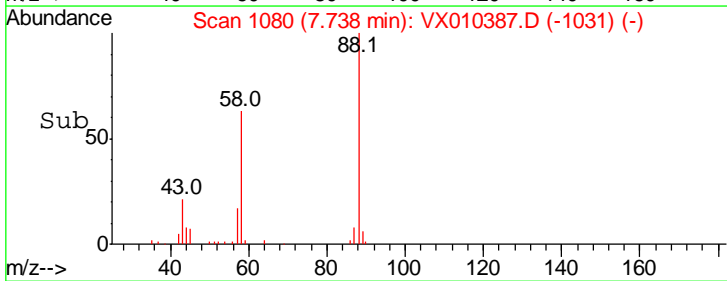
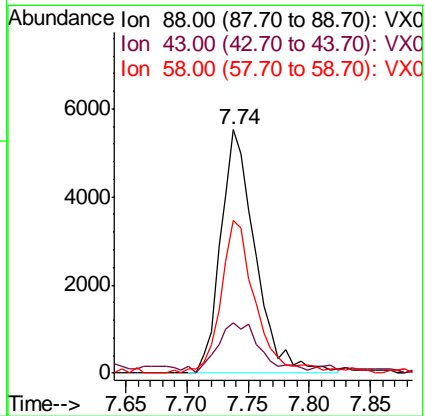
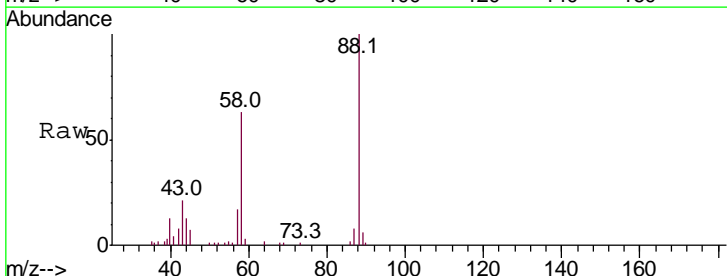
Manual Integrations
APPROVED
 MMDadoda
 6/24/2019 11:23:13 AM

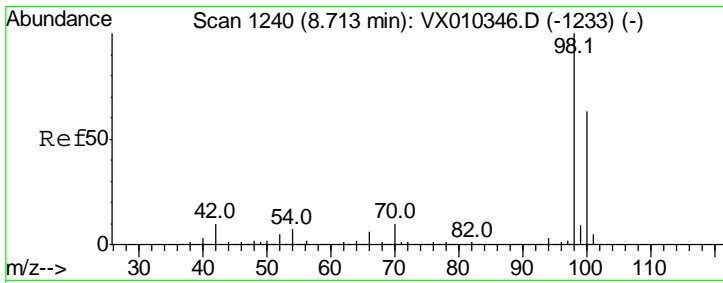


#49
 1,4-Dioxane
 Concen: 137.066 ug/l
 RT: 7.74 min Scan# 1080
 Delta R.T. 0.00 min
 Lab File: VX010387.D
 Acq: 21 Jun 2019 16:11

Tgt Ion: 88 Resp: 10838

Ion	Ratio	Lower	Upper
88	100		
43	25.8	20.2	30.2
58	59.9	49.5	74.3





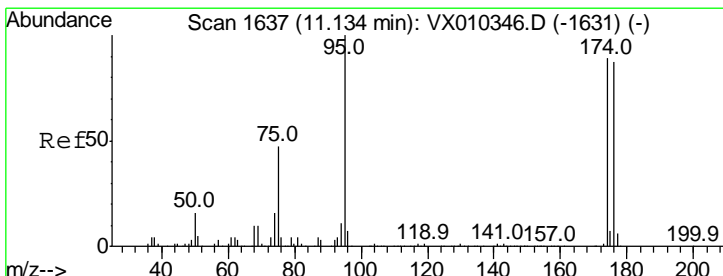
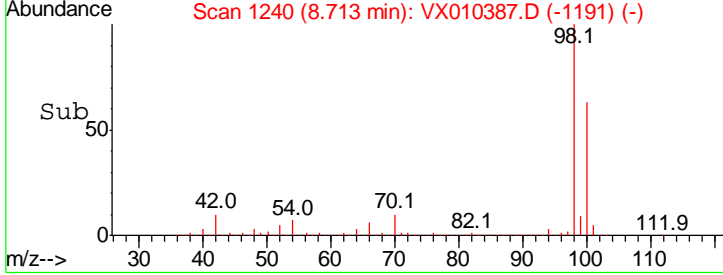
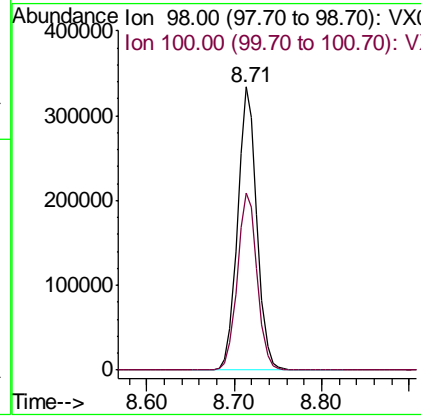
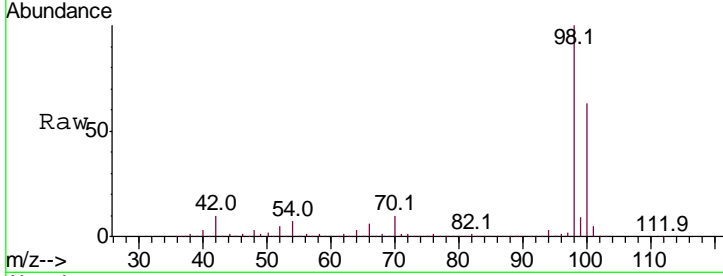
#50
 Toluene-d8
 Concen: 50.283 ug/l
 RT: 8.71 min Scan# 1240
 Delta R.T. 0.00 min
 Lab File: VX010387.D
 Acq: 21 Jun 2019 16:11

Instrument :
 MSVOA_X
 ClientSampled :
 DUP-1

Tgt Ion: 98 Resp: 513876

Ion	Ratio	Lower	Upper
98	100		
100	64.4	51.6	77.4

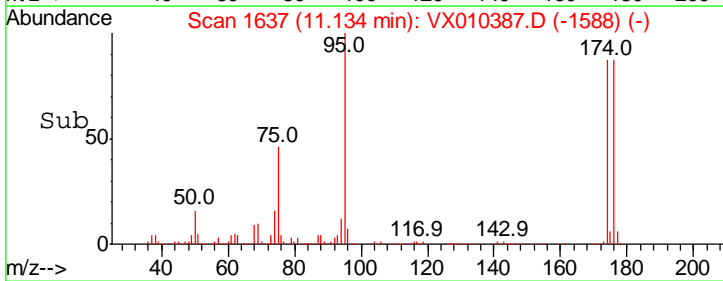
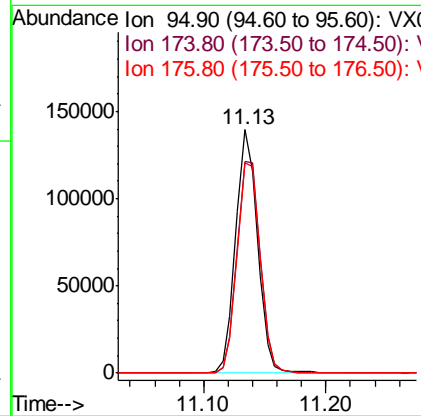
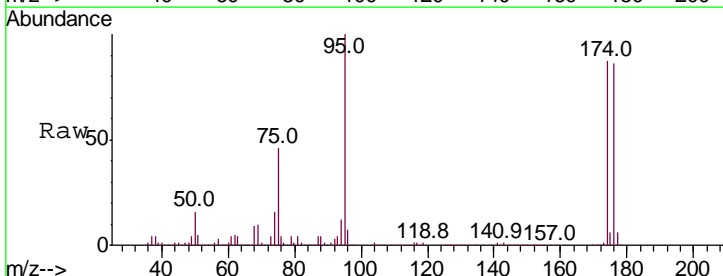
Manual Integrations
APPROVED
 MMDadoda
 6/24/2019 11:23:13 AM

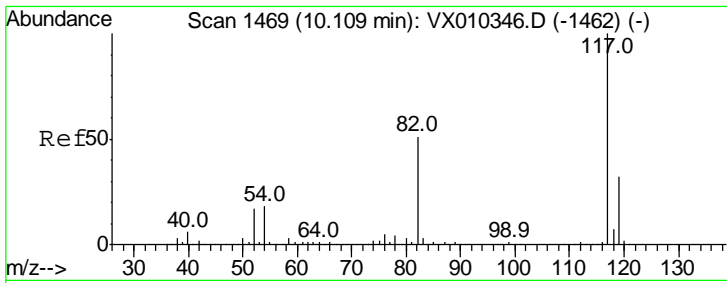


#62
 4-Bromofluorobenzene
 Concen: 46.414 ug/l
 RT: 11.13 min Scan# 1637
 Delta R.T. 0.00 min
 Lab File: VX010387.D
 Acq: 21 Jun 2019 16:11

Tgt Ion: 95 Resp: 171249

Ion	Ratio	Lower	Upper
95	100		
174	93.2	0.0	187.6
176	91.3	0.0	184.0





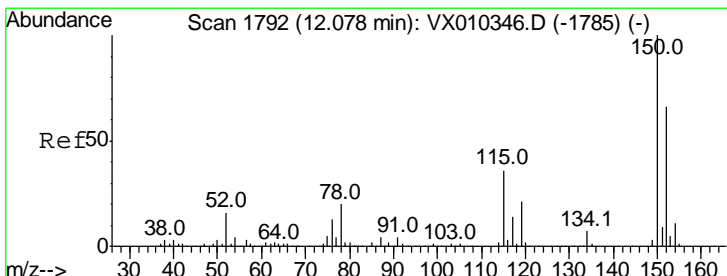
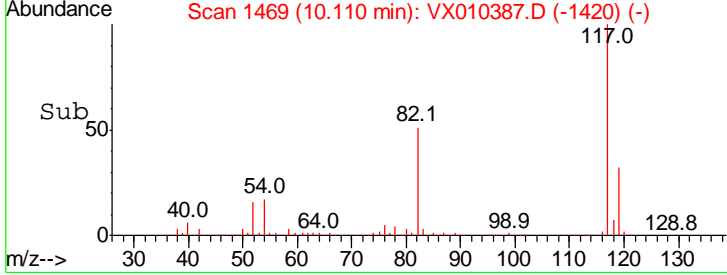
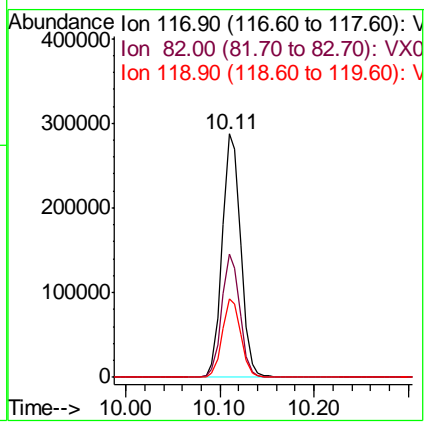
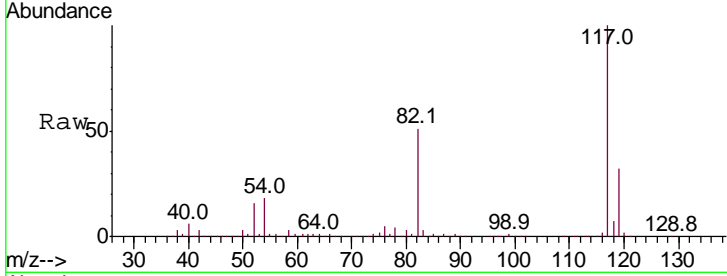
#63
 Chlorobenzene-d5
 Concen: 50.000 ug/l
 RT: 10.11 min Scan# 1469
 Delta R.T. 0.00 min
 Lab File: VX010387.D
 Acq: 21 Jun 2019 16:11

Instrument : MSVOA_X
 ClientSampled : DUP-1

Tgt Ion: 117 Resp: 391713

Ion	Ratio	Lower	Upper
117	100		
82	50.5	41.2	61.8
119	32.1	25.5	38.3

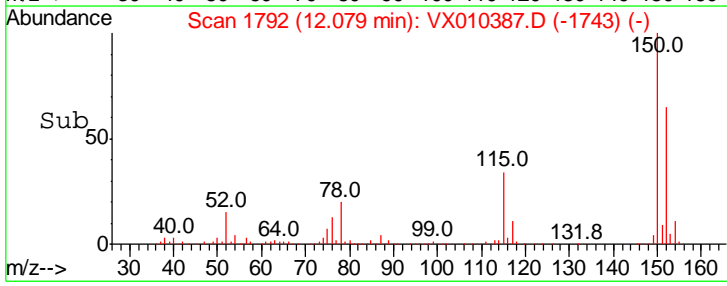
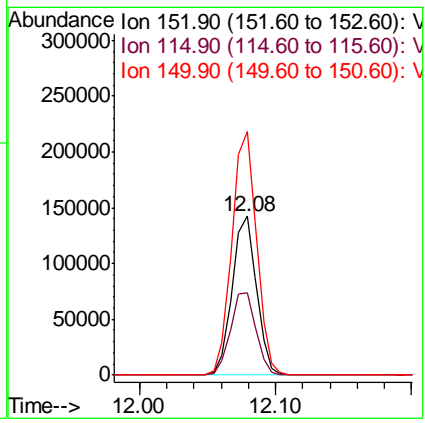
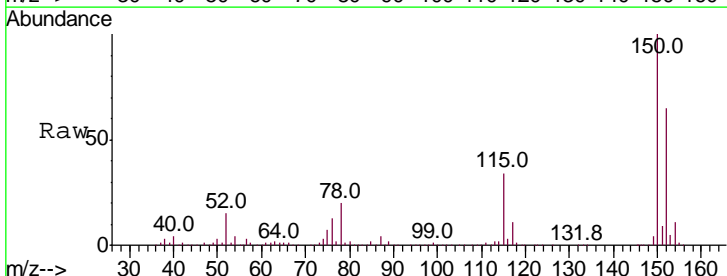
Manual Integrations
APPROVED
 MMDadoda
 6/24/2019 11:23:13 AM

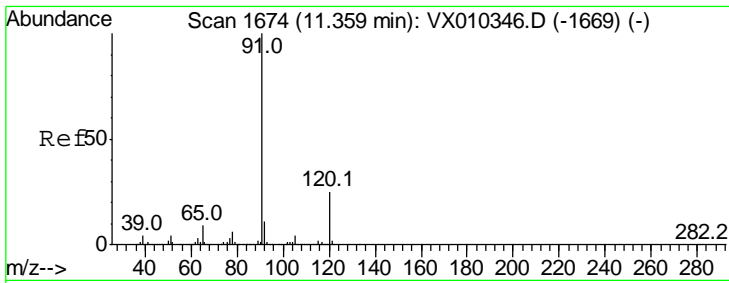


#72
 1,4-Dichlorobenzene-d4
 Concen: 50.000 ug/l
 RT: 12.08 min Scan# 1792
 Delta R.T. 0.00 min
 Lab File: VX010387.D
 Acq: 21 Jun 2019 16:11

Tgt Ion: 152 Resp: 177507

Ion	Ratio	Lower	Upper
152	100		
115	54.5	38.6	115.7
150	155.8	0.0	347.4





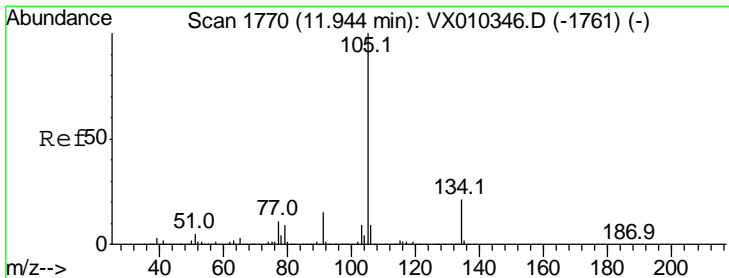
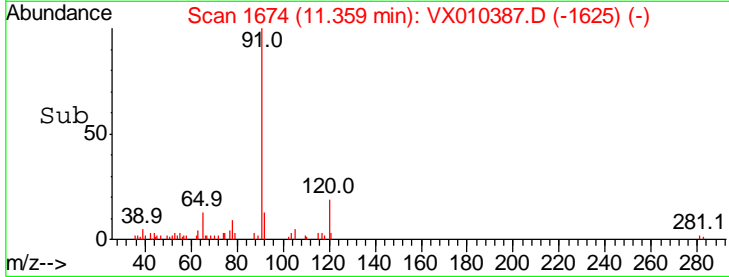
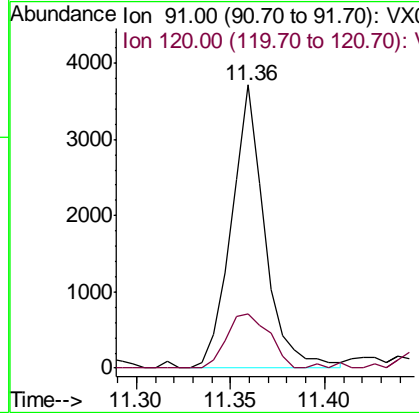
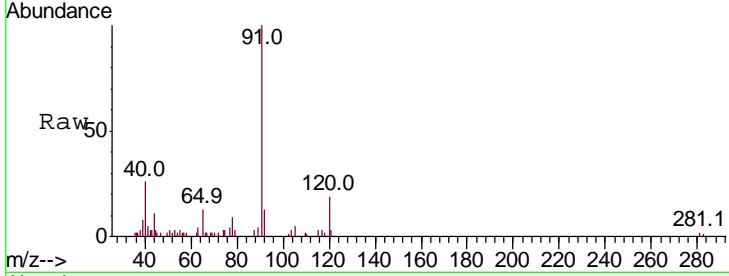
#78
 n-propylbenzene
 Concen: 0.345 ug/l
 RT: 11.36 min Scan# 1674
 Delta R.T. 0.00 min
 Lab File: VX010387.D
 Acq: 21 Jun 2019 16:11

Instrument : MSVOA_X
 ClientSampled : DUP-1

Tgt Ion	Resp	Lower	Upper
91	100		
120	24.3	12.4	37.4

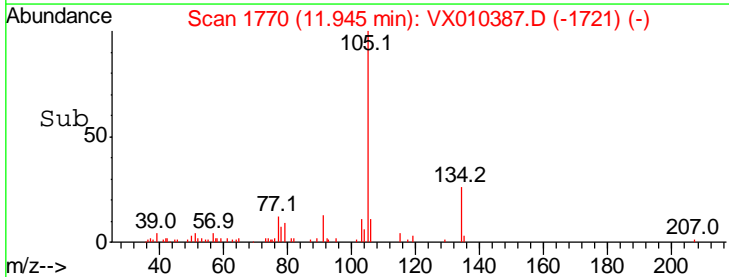
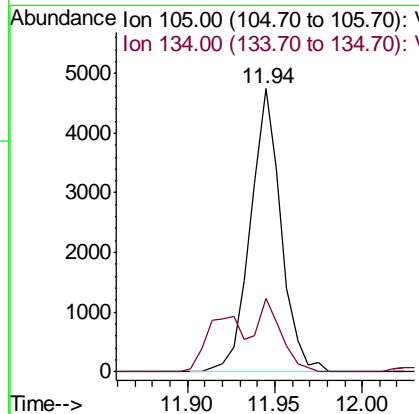
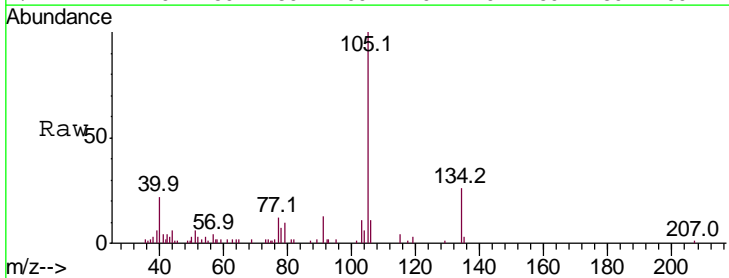
Manual Integrations
 APPROVED

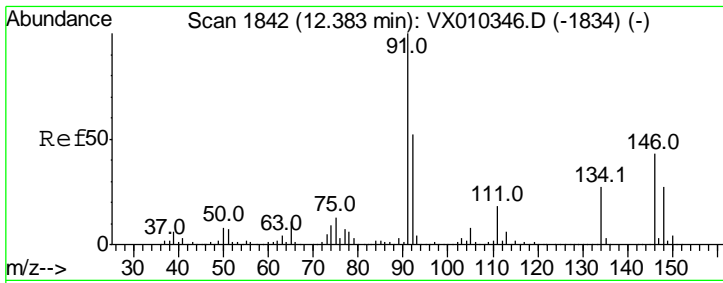
MMDadoda
 6/24/2019 11:23:13 AM



#85
 sec-Butylbenzene
 Concen: 0.490 ug/l
 RT: 11.94 min Scan# 1770
 Delta R.T. 0.00 min
 Lab File: VX010387.D
 Acq: 21 Jun 2019 16:11

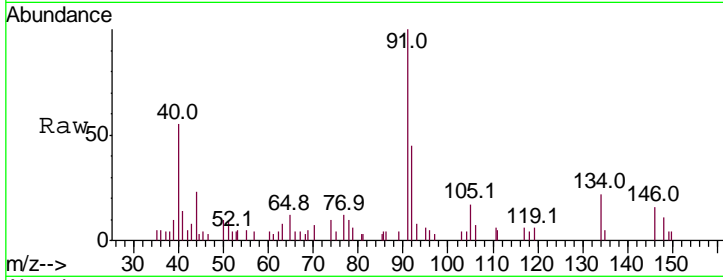
Tgt Ion	Resp	Lower	Upper
105	100		
134	21.2	10.7	31.9





#89
 n-Butylbenzene
 Concen: 0.272 ug/l m
 RT: 12.39 min Scan# 1843
 Delta R.T. 0.01 min
 Lab File: VX010387.D
 Acq: 21 Jun 2019 16:11

Instrument :
 MSVOA_X
ClientSampled :
 DUP-1



Tot Ion: 91 Resp: 2496

Ion	Ratio	Lower	Upper
91	100		
92	50.2	26.2	78.5
134	0.0	14.1	42.4#

Manual Integrations
APPROVED
 MMDadoda
 6/24/2019 11:23:13 AM

