

Data Path : Z:\voasrv\HPCHEM1\MSVOA_X\Data\VX062122\
 Data File : VX029673.D
 Acq On : 21 Jun 2022 19:39
 Operator : JC/MD
 Sample : N3398-09
 Misc : 5.0mL/MSVOA_X/WATER
 ALS Vial : 18 Sample Multiplier: 1

Instrument :
 MSVOA_X
 ClientSampleId :
 ORA-521

Integration Parameters: RTEINT.P

Integrator: RTE
 Smoothing : ON
 Sampling : 1
 Start Thrs : 0.2
 Stop Thrs : 0

Filtering: 5
 Min Area: 3 % of largest Peak
 Max Peaks: 100
 Peak Location: TOP

If leading or trailing edge < 100 prefer < Baseline drop else tangent >
 Peak separation: 5

Method : Z:\voasrv\HPCHEM1\MSVOA_X\Method\82X061822W.M
 Title : SW846 8260

Signal : TIC: VX029673.D\data.ms

peak #	R.T. min	first scan	max scan	last scan	PK TY	peak height	corr. area	corr. % max.	% of total
1	1.246	22	26	43	rBV	704397	1895584	40.15%	3.761%
2	1.368	43	46	51	rVB	113386	132640	2.81%	0.263%
3	1.453	56	60	74	rVB	187298	304284	6.45%	0.604%
4	1.746	104	108	115	rVB	82524	113854	2.41%	0.226%
5	1.953	138	142	151	rVB2	37477	58624	1.24%	0.116%
6	2.069	155	161	168	rVB	35912	65545	1.39%	0.130%
7	2.959	299	307	322	rBV	165952	383887	8.13%	0.762%
8	5.391	695	706	715	rBV2	168291	509276	10.79%	1.010%
9	5.556	724	733	752	rVB	257204	746566	15.81%	1.481%
10	5.964	788	800	810	rBV	144432	389890	8.26%	0.774%
11	6.763	921	931	947	rBV	385966	932444	19.75%	1.850%
12	7.385	1024	1033	1045	rBV5	60796	179202	3.80%	0.356%
13	8.653	1235	1241	1247	rVB	782812	1215298	25.74%	2.411%
14	8.720	1247	1252	1259	rVB	141701	211312	4.48%	0.419%
15	9.122	1311	1318	1323	rBV	133429	214549	4.54%	0.426%
16	9.244	1332	1338	1347	rVB	126522	186660	3.95%	0.370%
17	10.055	1461	1471	1476	rBV	788874	1079779	22.87%	2.142%
18	10.195	1490	1494	1499	rBV	142528	191888	4.06%	0.381%
19	10.299	1506	1511	1517	rVB	493416	699293	14.81%	1.387%
20	10.372	1517	1523	1532	rVB7	38960	84947	1.80%	0.169%
21	10.646	1563	1568	1573	rBV	298141	396345	8.40%	0.786%
22	10.774	1582	1589	1593	rBV6	33152	76455	1.62%	0.152%
23	10.963	1615	1620	1628	rVB2	78768	115838	2.45%	0.230%
24	11.085	1634	1640	1646	rBV	610172	829498	17.57%	1.646%
25	11.177	1649	1655	1661	rVB6	36271	89601	1.90%	0.178%
26	11.305	1673	1676	1680	rVB	131258	145666	3.09%	0.289%
27	11.384	1684	1689	1696	rVV	535842	1018496	21.58%	2.021%
28	11.451	1696	1700	1712	rVB	251783	400194	8.48%	0.794%
29	11.616	1722	1727	1734	rBV	385635	524811	11.12%	1.041%
30	11.756	1745	1750	1754	rVV	800158	984396	20.85%	1.953%
31	11.890	1767	1772	1779	rBV2	166030	278706	5.90%	0.553%
32	11.969	1782	1785	1789	rVB	140437	176249	3.73%	0.350%
33	12.024	1789	1794	1800	rVB	828752	1053081	22.31%	2.089%
34	12.091	1800	1805	1809	rBV	374120	522733	11.07%	1.037%
35	12.134	1809	1812	1817	rVB3	67352	106011	2.25%	0.210%
36	12.244	1825	1830	1833	rBV2	363501	544653	11.54%	1.081%

Data Path : Z:\voasrv\HPCHEM1\MSVOA_X\Data\VX062122\
 Data File : VX029673.D
 Acq On : 21 Jun 2022 19:39
 Operator : JC/MD
 Sample : N3398-09
 Misc : 5.0mL/MSVOA_X/WATER
 ALS Vial : 18 Sample Multiplier: 1

Instrument :
 MSVOA_X
 ClientSampleId :
 ORA-521

Integration Parameters: RTEINT.P

Integrator: RTE
 Smoothing : ON
 Sampling : 1
 Start Thrs : 0.2
 Stop Thrs : 0

Filtering: 5
 Min Area: 3 % of largest Peak
 Max Peaks: 100
 Peak Location: TOP

If leading or trailing edge < 100 prefer < Baseline drop else tangent >
 Peak separation: 5

Method : Z:\voasrv\HPCHEM1\MSVOA_X\Method\82X061822W.M
 Title : SW846 8260

37	12.268	1833	1834	1838	rVB	213808	196045	4.15%	0.389%
38	12.317	1838	1842	1849	rBV4	286894	443661	9.40%	0.880%
39	12.384	1849	1853	1855	rBV4	41708	64750	1.37%	0.128%
40	12.463	1862	1866	1872	rVB2	267434	333204	7.06%	0.661%
41	12.530	1872	1877	1879	rBV2	184071	308254	6.53%	0.612%
42	12.555	1879	1881	1887	rVB2	199712	255964	5.42%	0.508%
43	12.616	1887	1891	1894	rBV	268743	320387	6.79%	0.636%
44	12.646	1894	1896	1901	rVB2	57591	67781	1.44%	0.134%
45	12.805	1919	1922	1924	rBV3	46804	62332	1.32%	0.124%
46	12.853	1926	1930	1936	rVB3	146121	278107	5.89%	0.552%
47	12.920	1937	1941	1945	rBV	190067	264778	5.61%	0.525%
48	12.963	1945	1948	1952	rVB	226411	271548	5.75%	0.539%
49	13.091	1964	1969	1974	rVB4	106270	203044	4.30%	0.403%
50	13.170	1975	1982	1985	rBV4	235933	358312	7.59%	0.711%
51	13.213	1986	1989	1992	rVB3	80600	96445	2.04%	0.191%
52	13.262	1992	1997	1998	rBV2	173749	231312	4.90%	0.459%
53	13.292	1998	2002	2006	rVV2	632654	905878	19.19%	1.797%
54	13.347	2006	2011	2018	rVB	3756501	4720722	100.00%	9.366%
55	13.426	2019	2024	2030	rBV2	711282	1157318	24.52%	2.296%
56	13.548	2038	2044	2048	rBV	972162	1222299	25.89%	2.425%
57	13.585	2048	2050	2057	rVB3	127771	177749	3.77%	0.353%
58	13.664	2061	2063	2067	rVB3	107139	121638	2.58%	0.241%
59	13.713	2067	2071	2074	rBV	150578	187983	3.98%	0.373%
60	13.756	2075	2078	2079	rBV3	66012	70442	1.49%	0.140%
61	13.835	2087	2091	2092	rBV2	83525	121380	2.57%	0.241%
62	13.853	2092	2094	2101	rVV2	180410	296730	6.29%	0.589%
63	13.926	2103	2106	2111	rVB3	118565	172501	3.65%	0.342%
64	14.024	2119	2122	2126	rBV3	50492	86518	1.83%	0.172%
65	14.073	2126	2130	2132	rBV2	65025	94552	2.00%	0.188%
66	14.103	2132	2135	2139	rVB3	82214	92841	1.97%	0.184%
67	14.152	2139	2143	2144	rBV	303048	347932	7.37%	0.690%
68	14.176	2144	2147	2151	rVB	1348992	1581756	33.51%	3.138%
69	14.225	2151	2155	2158	rBV2	208864	363986	7.71%	0.722%
70	14.262	2158	2161	2167	rVB	2127970	2578913	54.63%	5.117%
71	14.323	2167	2171	2173	rBV	295386	394541	8.36%	0.783%
72	14.377	2176	2180	2184	rVB	2709709	3340448	70.76%	6.628%
73	14.481	2191	2197	2200	rBV3	644491	974605	20.65%	1.934%
74	14.512	2200	2202	2204	rVV	148955	159436	3.38%	0.316%
75	14.591	2210	2215	2220	rBV	494390	735773	15.59%	1.460%
76	14.640	2220	2223	2225	rVV	179532	223759	4.74%	0.444%

Data Path : Z:\voasrv\HPCHEM1\MSVOA_X\Data\VX062122\
 Data File : VX029673.D
 Acq On : 21 Jun 2022 19:39
 Operator : JC/MD
 Sample : N3398-09
 Misc : 5.0mL/MSVOA_X/WATER
 ALS Vial : 18 Sample Multiplier: 1

Instrument :
 MSVOA_X
 ClientSampleId :
 ORA-521

Integration Parameters: RTEINT.P

Integrator: RTE
 Smoothing : ON Filtering: 5
 Sampling : 1 Min Area: 3 % of largest Peak
 Start Thrs: 0.2 Max Peaks: 100
 Stop Thrs : 0 Peak Location: TOP

If leading or trailing edge < 100 prefer < Baseline drop else tangent >
 Peak separation: 5

Method : Z:\voasrv\HPCHEM1\MSVOA_X\Method\82X061822W.M
 Title : SW846 8260

77	14.676	2225	2229	2233	rVB3	203400	309120	6.55%	0.613%
78	14.780	2241	2246	2251	rBV	557390	795927	16.86%	1.579%
79	14.835	2252	2255	2258	rVV	130763	165376	3.50%	0.328%
80	14.902	2258	2266	2270	rVB2	379882	778189	16.48%	1.544%
81	14.987	2271	2280	2285	rBV2	355904	675939	14.32%	1.341%
82	15.060	2289	2292	2294	rVB2	59067	65802	1.39%	0.131%
83	15.109	2295	2300	2303	rBV	934692	1300375	27.55%	2.580%
84	15.146	2303	2306	2314	rVV3	847428	1481792	31.39%	2.940%
85	15.207	2314	2316	2320	rVB	240709	264667	5.61%	0.525%
86	15.243	2320	2322	2326	rVB2	49498	60473	1.28%	0.120%
87	15.310	2327	2333	2337	rBV4	167355	308500	6.54%	0.612%
88	15.365	2338	2342	2346	rBV	419747	539612	11.43%	1.071%
89	15.481	2358	2361	2363	rBV3	69015	93975	1.99%	0.186%
90	15.615	2378	2383	2386	rBV	428275	616107	13.05%	1.222%
91	15.652	2386	2389	2395	rVB	468841	677462	14.35%	1.344%
92	15.719	2396	2400	2405	rBV5	40149	100882	2.14%	0.200%
93	15.780	2405	2410	2414	rBV4	125028	235600	4.99%	0.467%
94	15.847	2417	2421	2428	rVB2	195275	383804	8.13%	0.762%
95	15.987	2439	2444	2449	rVB3	138758	242664	5.14%	0.481%
96	16.176	2470	2475	2483	rBV3	89915	158594	3.36%	0.315%
97	16.261	2486	2489	2497	rVB5	41234	92802	1.97%	0.184%
98	16.462	2518	2522	2532	rVB8	55028	140241	2.97%	0.278%
99	16.597	2541	2544	2550	rVB2	57664	104385	2.21%	0.207%
100	16.658	2550	2554	2559	rBV	42953	64652	1.37%	0.128%

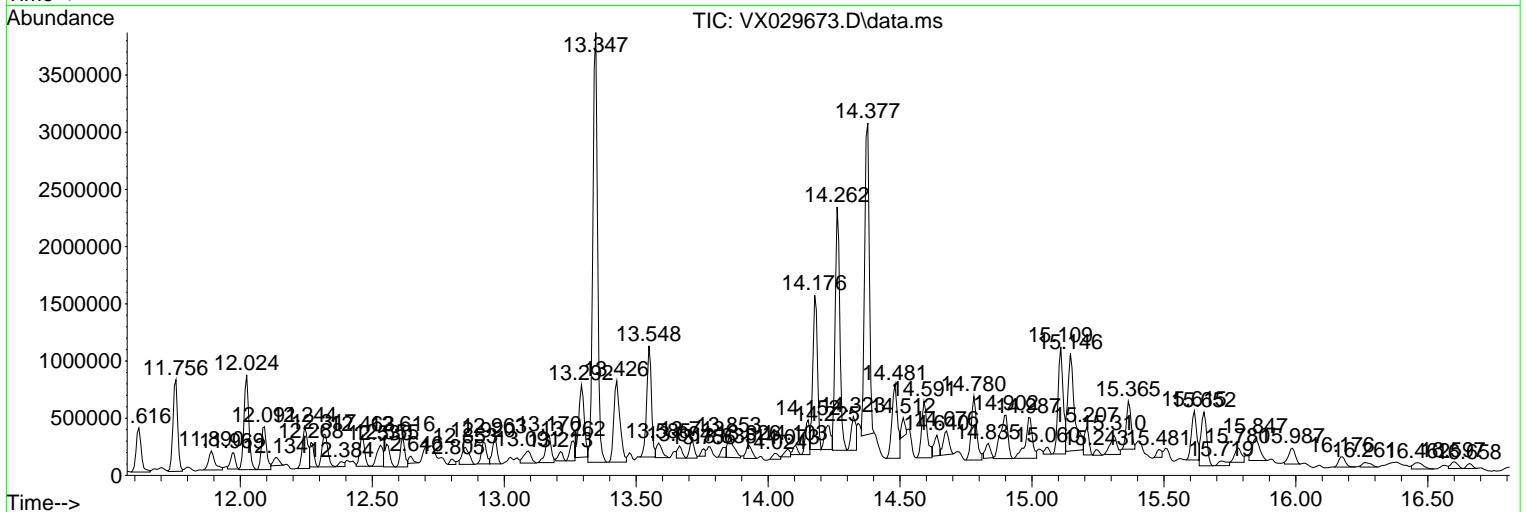
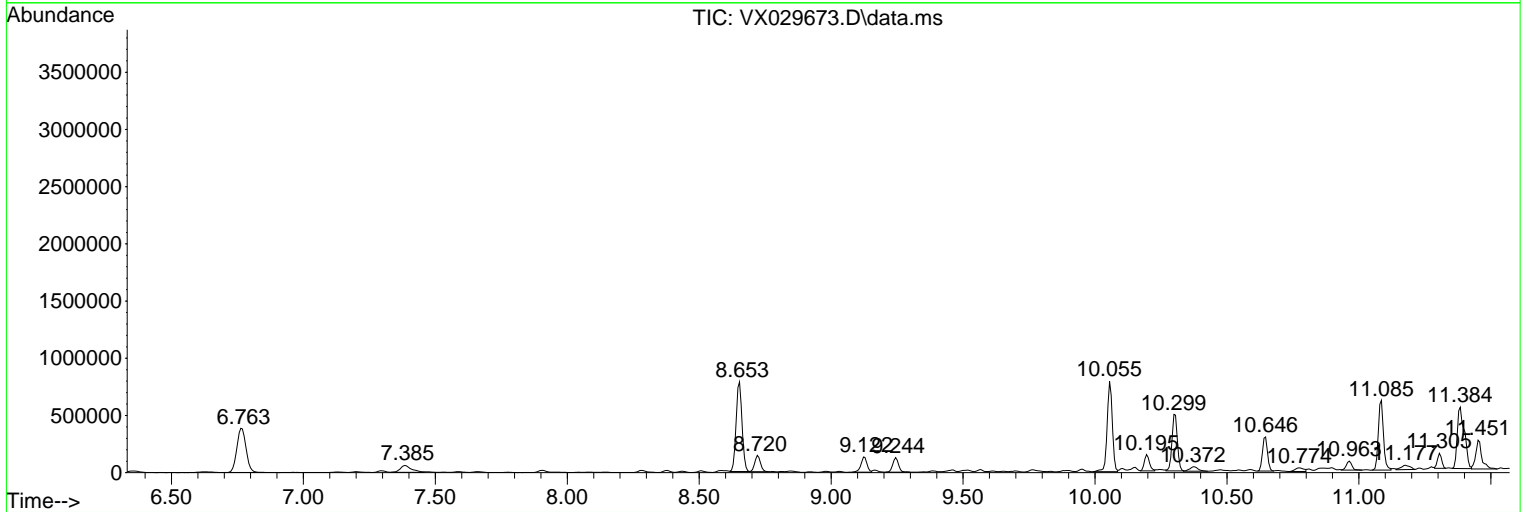
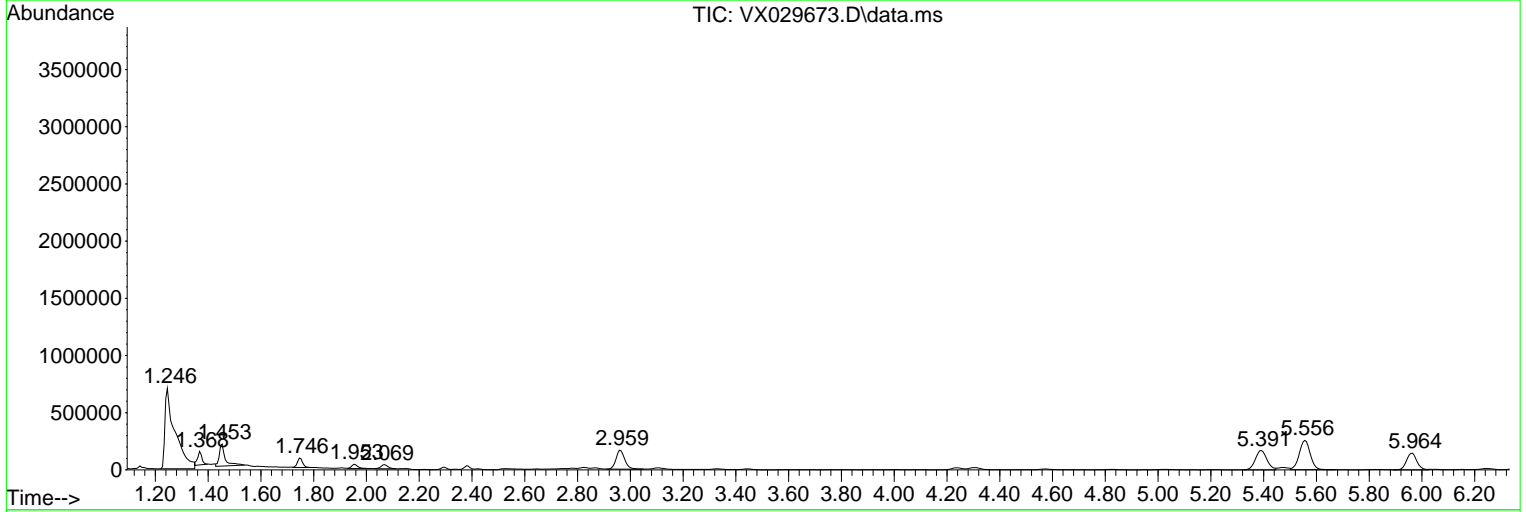
Sum of corrected areas: 50400819

Data Path : Z:\voasrv\HPCHEM1\MSVOA_X\Data\VX062122\
 Data File : VX029673.D
 Acq On : 21 Jun 2022 19:39
 Operator : JC/MD
 Sample : N3398-09
 Misc : 5.0mL/MSVOA_X/WATER
 ALS Vial : 18 Sample Multiplier: 1

Instrument :
 MSVOA_X
 ClientSampleId :
 ORA-521

Quant Method : Z:\voasrv\HPCHEM1\MSVOA_X\Method\82X061822W.M
 Quant Title : SW846 8260

TIC Library : C:\Database\NIST20.L
 TIC Integration Parameters: LSCINT.P



Data Path : Z:\voasrv\HPCHEM1\MSVOA_X\Data\VX062122\
 Data File : VX029673.D
 Acq On : 21 Jun 2022 19:39
 Operator : JC/MD
 Sample : N3398-09
 Misc : 5.0mL/MSVOA_X/WATER
 ALS Vial : 18 Sample Multiplier: 1

Instrument :
 MSVOA_X
 ClientSampleId :
 ORA-521

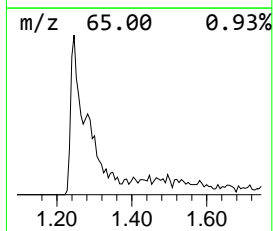
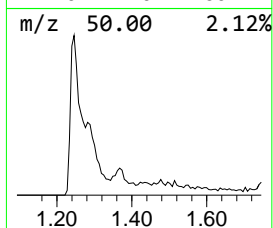
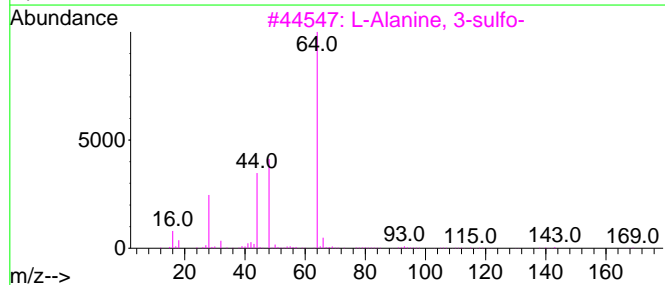
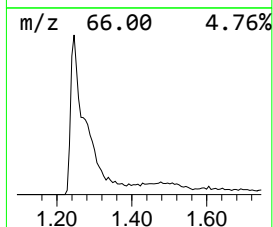
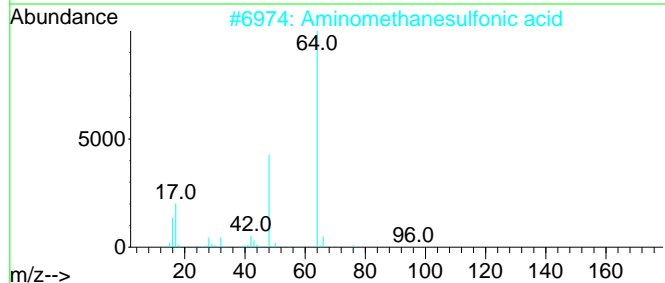
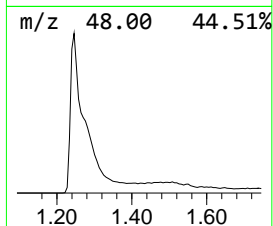
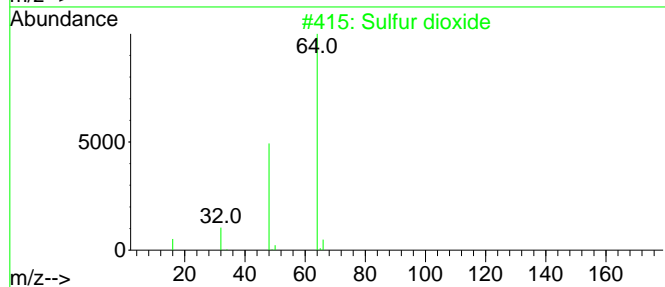
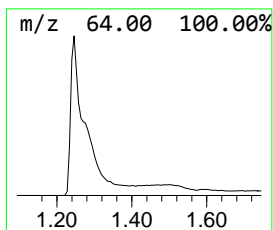
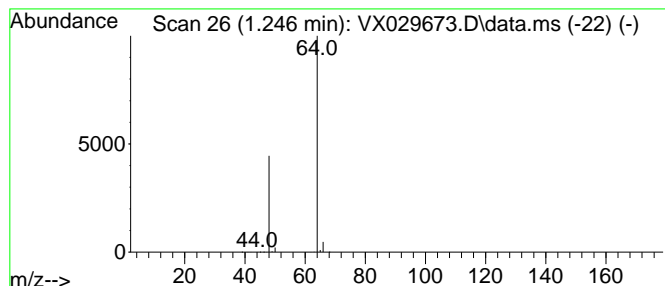
Quant Method : Z:\voasrv\HPCHEM1\MSVOA_X\Method\82X061822W.M
 Quant Title : SW846 8260

TIC Library : C:\Database\NIST20.L
 TIC Integration Parameters: LSCINT.P

 Peak Number 1 Sulfur dioxide Concentration Rank 3

R.T.	EstConc	Area	Relative to ISTD	R.T.
1.246	126.95 ug/l	1895580	Pentafluorobenzene	5.562

Hit#	of	5	Tentative ID	MW	MolForm	CAS#	Qual
1			Sulfur dioxide	64	O2S	007446-09-5	83
2			Aminomethanesulfonic acid	111	CH5NO3S	013881-91-9	74
3			L-Alanine, 3-sulfo-	169	C3H7NO5S	000498-40-8	9
4			Ethene, 1,1-difluoro-	64	C2H2F2	000075-38-7	4
5			Ethyl Chloride	64	C2H5Cl	000075-00-3	3



Data Path : Z:\voasrv\HPCHEM1\MSVOA_X\Data\VX062122\
 Data File : VX029673.D
 Acq On : 21 Jun 2022 19:39
 Operator : JC/MD
 Sample : N3398-09
 Misc : 5.0mL/MSVOA_X/WATER
 ALS Vial : 18 Sample Multiplier: 1

Instrument :
 MSVOA_X
 ClientSampleId :
 ORA-521

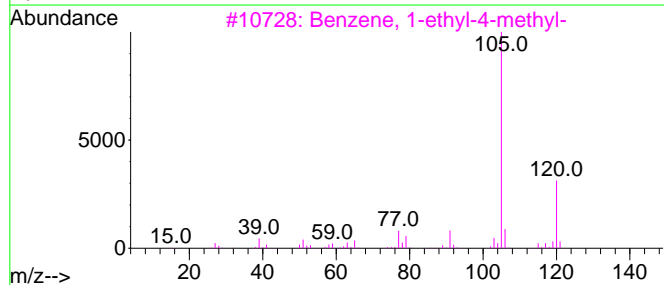
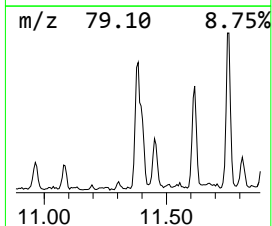
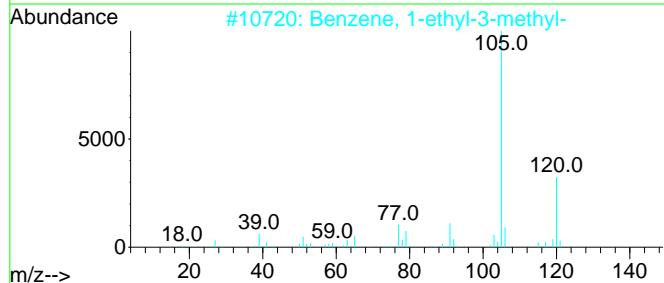
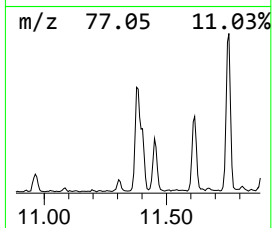
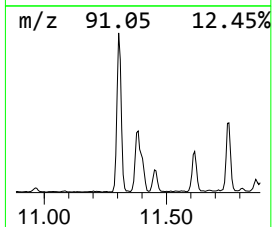
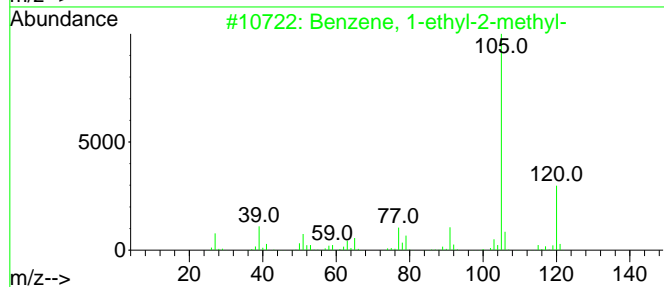
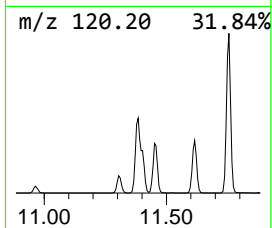
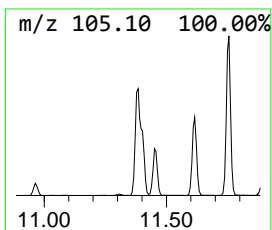
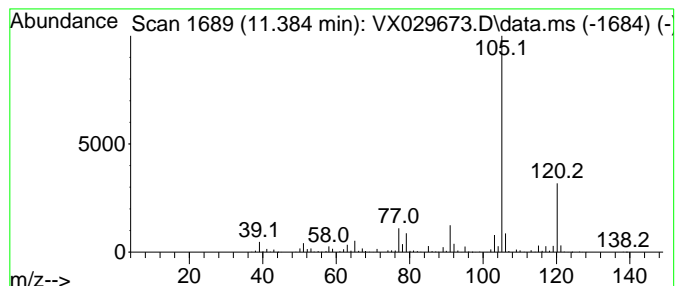
Quant Method : Z:\voasrv\HPCHEM1\MSVOA_X\Method\82X061822W.M
 Quant Title : SW846 8260

TIC Library : C:\Database\NIST20.L
 TIC Integration Parameters: LSCINT.P

 Peak Number 2 Benzene, 1-ethyl-2-methyl- Concentration Rank 10

R.T.	EstConc	Area	Relative to ISTD	R.T.
11.384	48.36 ug/l	1018500	1,4-Dichlorobenzene-d4	12.024

Hit#	of	5	Tentative ID	MW	MolForm	CAS#	Qual
1			Benzene, 1-ethyl-2-methyl-	120	C9H12	000611-14-3	95
2			Benzene, 1-ethyl-3-methyl-	120	C9H12	000620-14-4	95
3			Benzene, 1-ethyl-4-methyl-	120	C9H12	000622-96-8	91
4			Benzene, 1,2,4-trimethyl-	120	C9H12	000095-63-6	91
5			Mesitylene	120	C9H12	000108-67-8	91



Data Path : Z:\voasrv\HPCHEM1\MSVOA_X\Data\VX062122\
 Data File : VX029673.D
 Acq On : 21 Jun 2022 19:39
 Operator : JC/MD
 Sample : N3398-09
 Misc : 5.0mL/MSVOA_X/WATER
 ALS Vial : 18 Sample Multiplier: 1

Instrument :
 MSVOA_X
 ClientSampleId :
 ORA-521

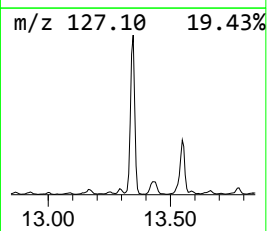
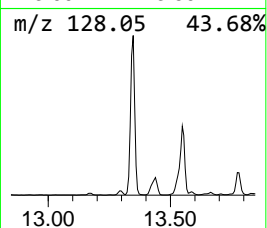
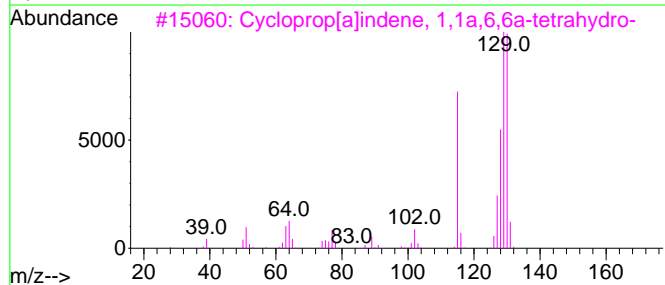
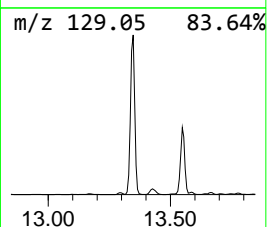
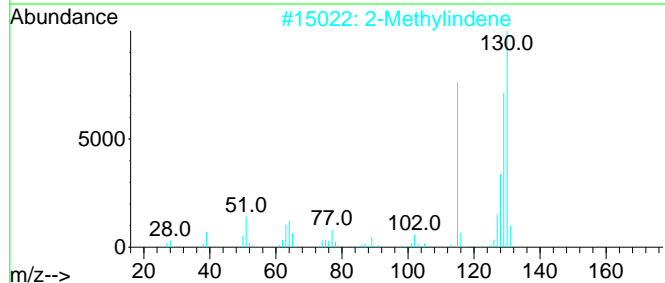
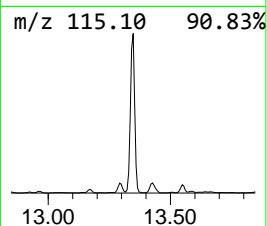
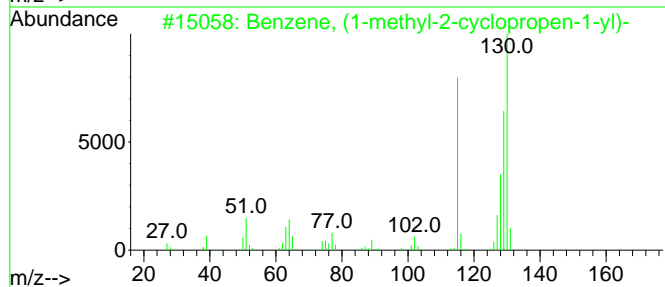
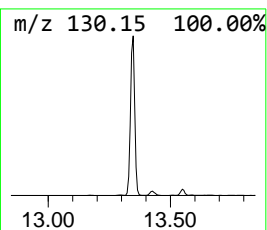
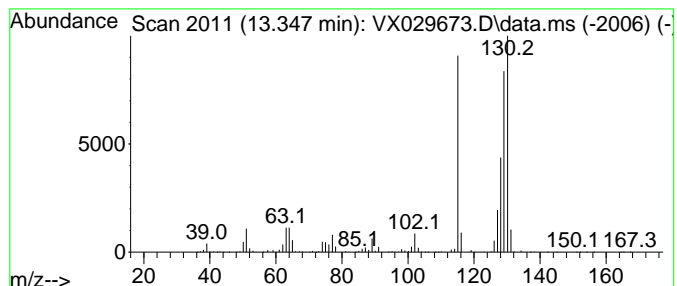
Quant Method : Z:\voasrv\HPCHEM1\MSVOA_X\Method\82X061822W.M
 Quant Title : SW846 8260

TIC Library : C:\Database\NIST20.L
 TIC Integration Parameters: LSCINT.P

 Peak Number 3 Benzene, (1-methyl-2-cyclop... Concentration Rank 1

R.T.	EstConc	Area	Relative to ISTD	R.T.
13.347	224.14 ug/l	4720720	1,4-Dichlorobenzene-d4	12.024

Hit#	of	5	Tentative ID	MW	MolForm	CAS#	Qual
1			Benzene, (1-methyl-2-cyclopropen...	130	C10H10	065051-83-4	95
2			2-Methylindene	130	C10H10	002177-47-1	95
3			Cycloprop[a]indene, 1,1a,6,6a-te...	130	C10H10	015677-15-3	95
4			1H-Indene, 1-methyl-	130	C10H10	000767-59-9	94
5			1H-Indene, 3-methyl-	130	C10H10	000767-60-2	93



Data Path : Z:\voasrv\HPCHEM1\MSVOA_X\Data\VX062122\
 Data File : VX029673.D
 Acq On : 21 Jun 2022 19:39
 Operator : JC/MD
 Sample : N3398-09
 Misc : 5.0mL/MSVOA_X/WATER
 ALS Vial : 18 Sample Multiplier: 1

Instrument :
 MSVOA_X
 ClientSampleId :
 ORA-521

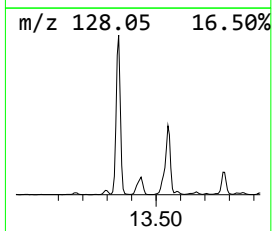
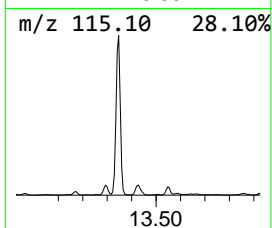
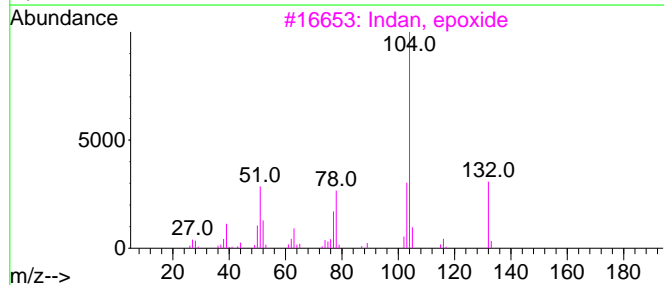
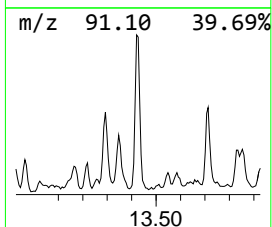
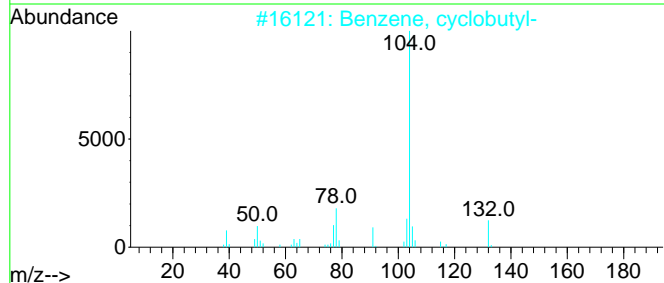
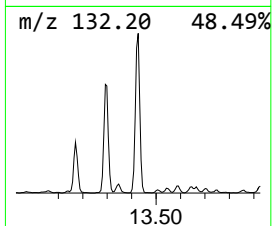
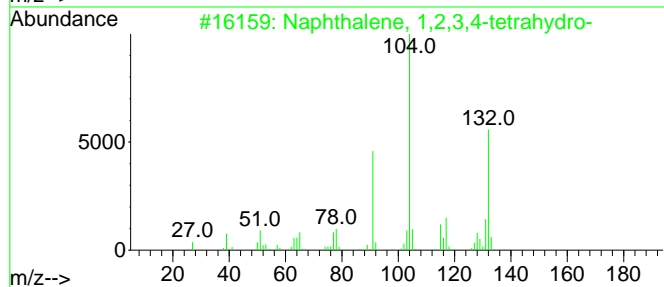
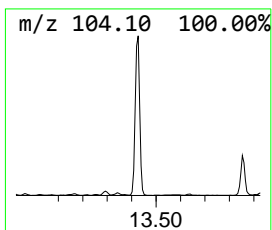
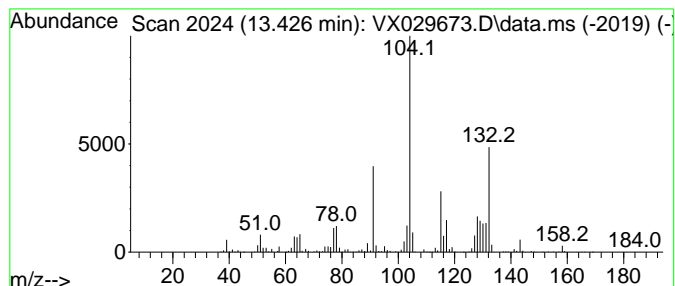
Quant Method : Z:\voasrv\HPCHEM1\MSVOA_X\Method\82X061822W.M
 Quant Title : SW846 8260

TIC Library : C:\Database\NIST20.L
 TIC Integration Parameters: LSCINT.P

 Peak Number 4 Naphthalene, 1,2,3,4-tetrahydro... Concentration Rank 9

R.T.	EstConc	Area	Relative to ISTD	R.T.
13.426	54.95 ug/l	1157320	1,4-Dichlorobenzene-d4	12.024

Hit#	of	5	Tentative ID	MW	MolForm	CAS#	Qual
1			Naphthalene, 1,2,3,4-tetrahydro-	132	C10H12	000119-64-2	90
2			Benzene, cyclobutyl-	132	C10H12	004392-30-7	50
3			Indan, epoxide	132	C9H8O	000768-22-9	46
4			2-Methylbenzyl cyanide	131	C9H9N	022364-68-7	43
5			2H-Inden-2-one, 1,3-dihydro-	132	C9H8O	000615-13-4	43



Data Path : Z:\voasrv\HPCHEM1\MSVOA_X\Data\VX062122\
 Data File : VX029673.D
 Acq On : 21 Jun 2022 19:39
 Operator : JC/MD
 Sample : N3398-09
 Misc : 5.0mL/MSVOA_X/WATER
 ALS Vial : 18 Sample Multiplier: 1

Instrument :
 MSVOA_X
 ClientSampleId :
 ORA-521

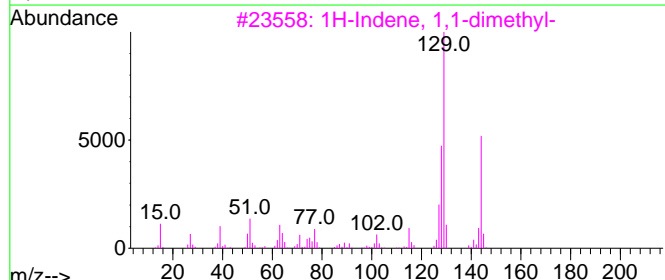
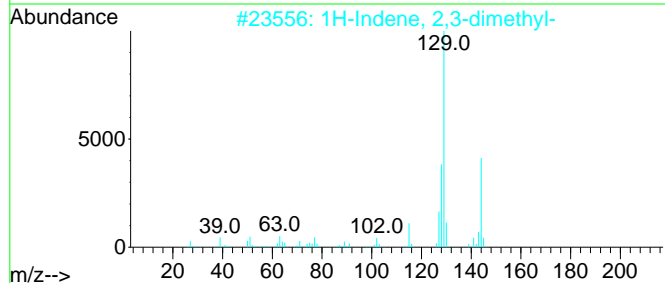
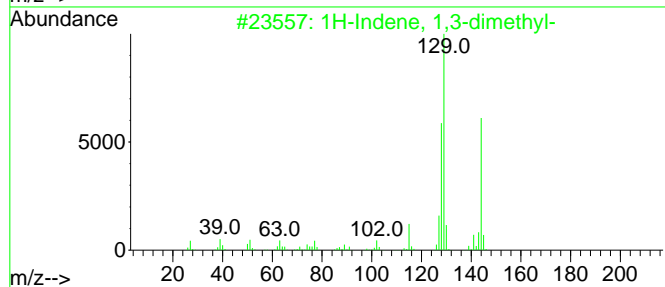
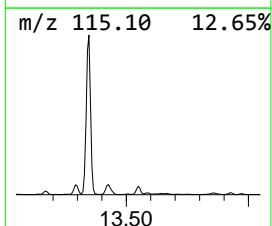
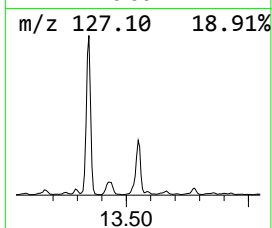
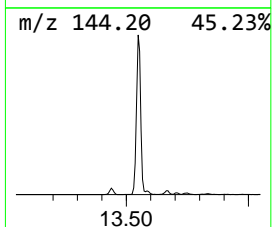
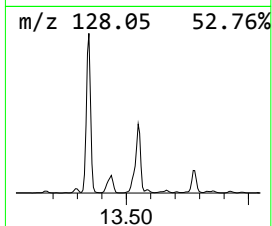
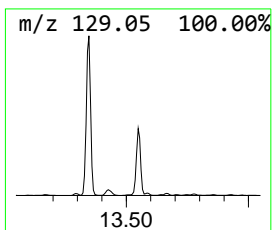
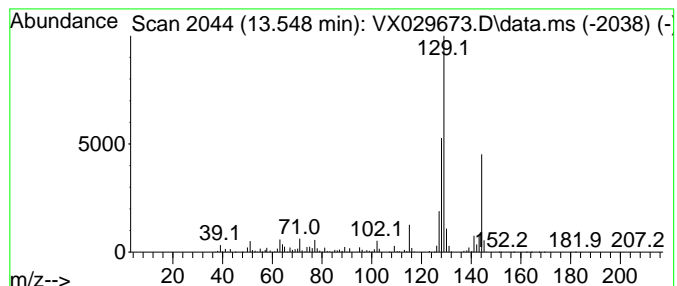
Quant Method : Z:\voasrv\HPCHEM1\MSVOA_X\Method\82X061822W.M
 Quant Title : SW846 8260

TIC Library : C:\Database\NIST20.L
 TIC Integration Parameters: LSCINT.P

 Peak Number 5 1H-Indene, 1,3-dimethyl- Concentration Rank 8

R.T.	EstConc	Area	Relative to ISTD	R.T.
13.548	58.03 ug/l	1222300	1,4-Dichlorobenzene-d4	12.024

Hit#	of 5	Tentative ID	MW	MolForm	CAS#	Qual
1		1H-Indene, 1,3-dimethyl-	144	C11H12	002177-48-2	96
2		1H-Indene, 2,3-dimethyl-	144	C11H12	004773-82-4	96
3		1H-Indene, 1,1-dimethyl-	144	C11H12	018636-55-0	95
4		Benzene, (1-methyl-2-butynyl)-	144	C11H12	087712-69-4	91
5		(1-Methylbuta-1,3-dienyl)benzene	144	C11H12	054758-36-0	91



Data Path : Z:\voasrv\HPCHEM1\MSVOA_X\Data\VX062122\
 Data File : VX029673.D
 Acq On : 21 Jun 2022 19:39
 Operator : JC/MD
 Sample : N3398-09
 Misc : 5.0mL/MSVOA_X/WATER
 ALS Vial : 18 Sample Multiplier: 1

Instrument :
 MSVOA_X
 ClientSampleId :
 ORA-521

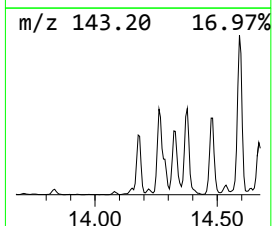
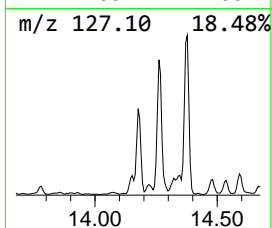
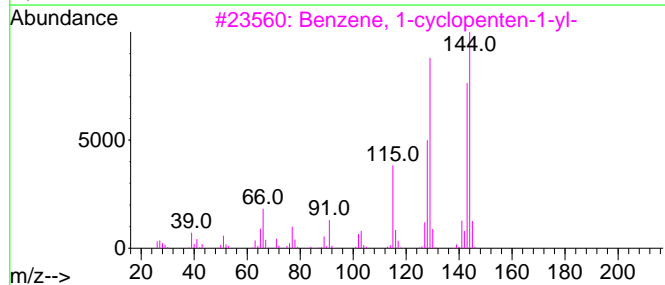
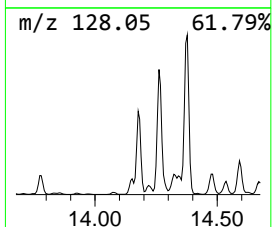
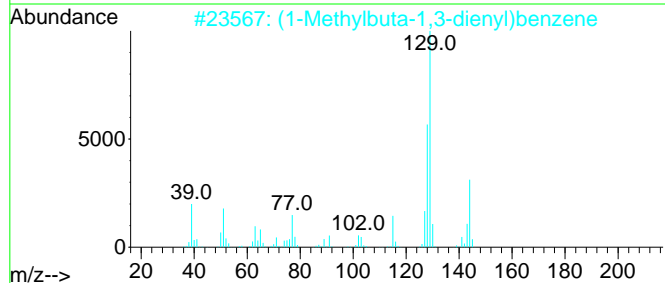
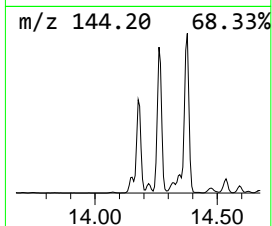
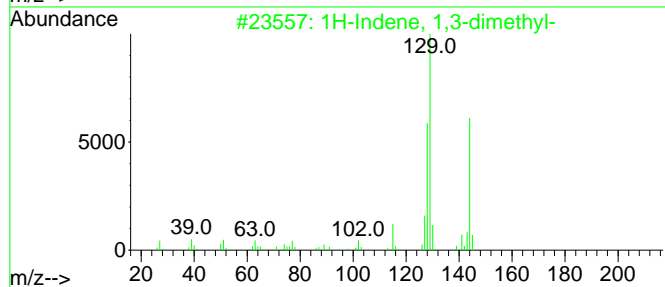
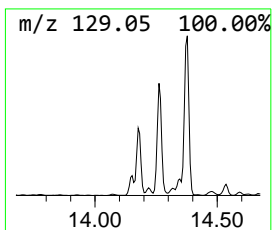
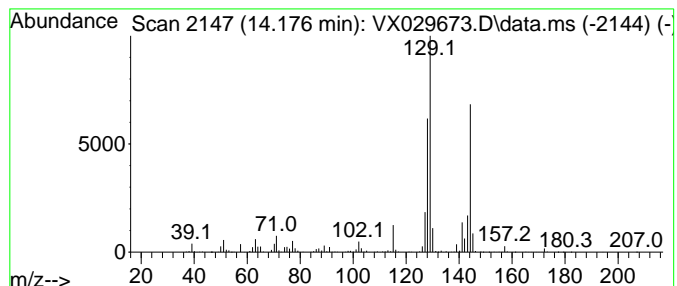
Quant Method : Z:\voasrv\HPCHEM1\MSVOA_X\Method\82X061822W.M
 Quant Title : SW846 8260

TIC Library : C:\Database\NIST20.L
 TIC Integration Parameters: LSCINT.P

 Peak Number 6 (1-Methylbuta-1,3-dienyl)be... Concentration Rank 5

R.T.	EstConc	Area	Relative to ISTD	R.T.
14.176	75.10 ug/l	1581760	1,4-Dichlorobenzene-d4	12.024

Hit#	of 5	Tentative ID	MW	MolForm	CAS#	Qual
1		1H-Indene, 1,3-dimethyl-	144	C11H12	002177-48-2	95
2		(1-Methylbuta-1,3-dienyl)benzene	144	C11H12	054758-36-0	94
3		Benzene, 1-cyclopenten-1-yl-	144	C11H12	000825-54-7	91
4		Naphthalene, 1,2-dihydro-2-methyl-	144	C11H12	021564-79-4	90
5		1H-Indene, 4,7-dimethyl-	144	C11H12	006974-97-6	87



Data Path : Z:\voasrv\HPCHEM1\MSVOA_X\Data\VX062122\
 Data File : VX029673.D
 Acq On : 21 Jun 2022 19:39
 Operator : JC/MD
 Sample : N3398-09
 Misc : 5.0mL/MSVOA_X/WATER
 ALS Vial : 18 Sample Multiplier: 1

Instrument :
 MSVOA_X
 ClientSampleId :
 ORA-521

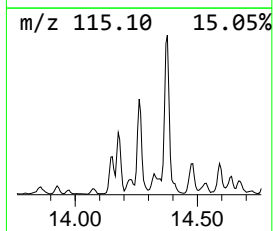
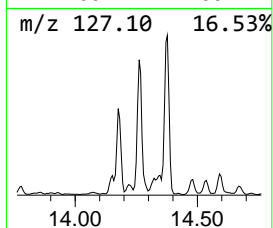
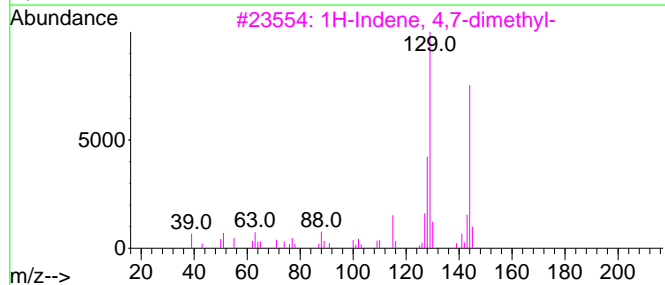
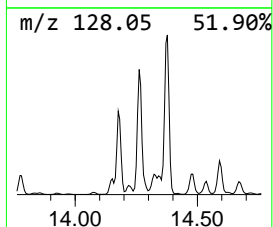
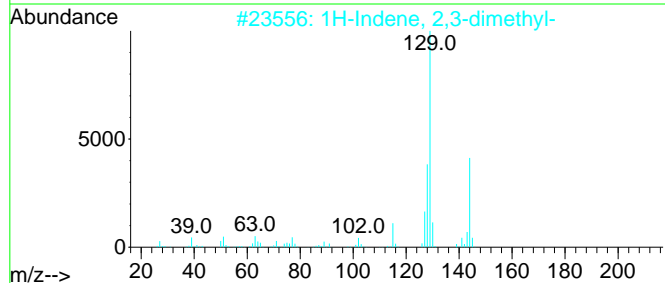
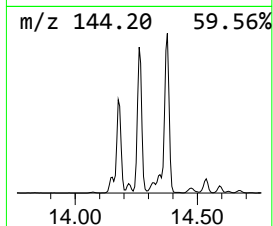
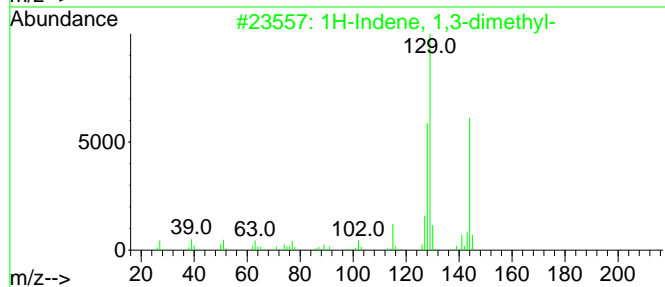
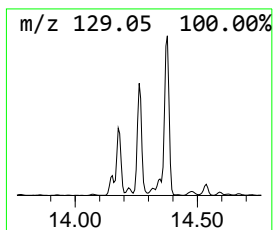
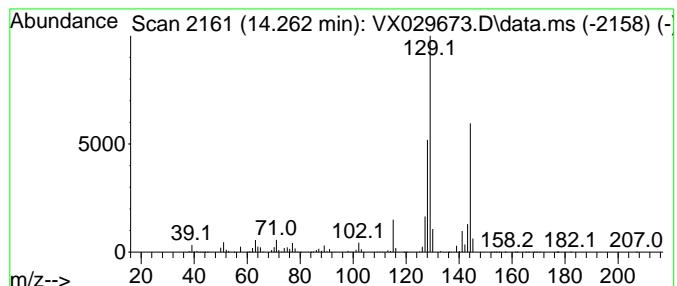
Quant Method : Z:\voasrv\HPCHEM1\MSVOA_X\Method\82X061822W.M
 Quant Title : SW846 8260

TIC Library : C:\Database\NIST20.L
 TIC Integration Parameters: LSCINT.P

 Peak Number 7 1H-Indene, 2,3-dimethyl- Concentration Rank 4

R.T.	EstConc	Area	Relative to ISTD	R.T.
14.262	122.45 ug/l	2578910	1,4-Dichlorobenzene-d4	12.024

Hit#	of 5	Tentative ID	MW	MolForm	CAS#	Qual
1		1H-Indene, 1,3-dimethyl-	144	C11H12	002177-48-2	96
2		1H-Indene, 2,3-dimethyl-	144	C11H12	004773-82-4	94
3		1H-Indene, 4,7-dimethyl-	144	C11H12	006974-97-6	94
4		1H-Indene, 1,1-dimethyl-	144	C11H12	018636-55-0	90
5		(1-Methylbuta-1,3-dienyl)benzene	144	C11H12	054758-36-0	90



Data Path : Z:\voasrv\HPCHEM1\MSVOA_X\Data\VX062122\
 Data File : VX029673.D
 Acq On : 21 Jun 2022 19:39
 Operator : JC/MD
 Sample : N3398-09
 Misc : 5.0mL/MSVOA_X/WATER
 ALS Vial : 18 Sample Multiplier: 1

Instrument :
 MSVOA_X
 ClientSampleId :
 ORA-521

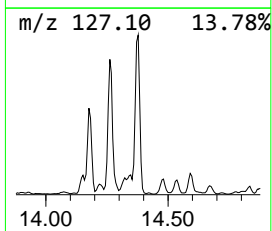
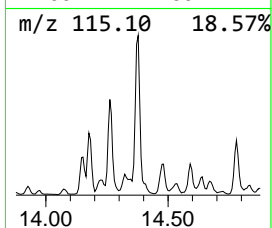
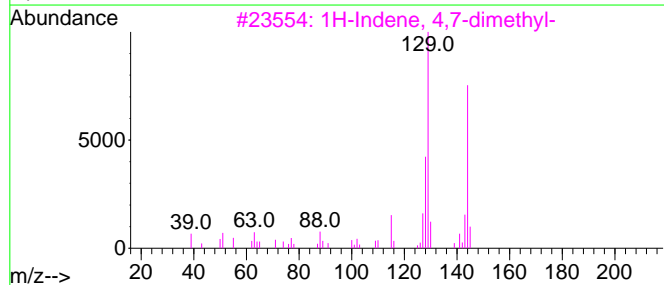
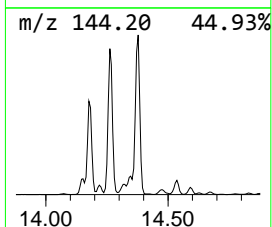
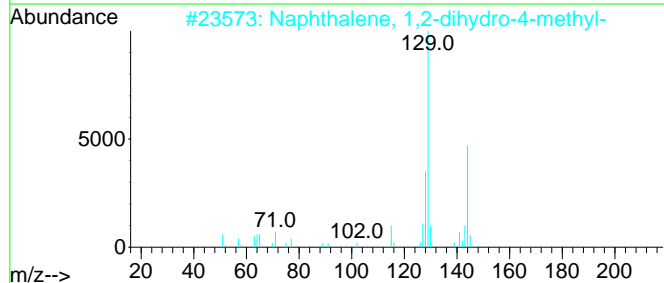
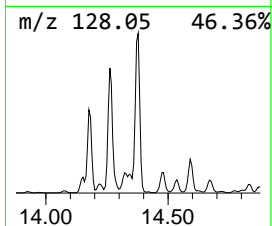
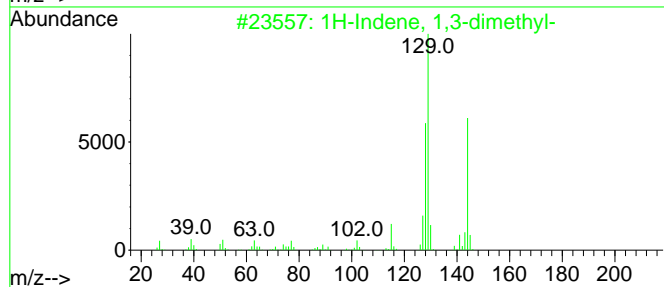
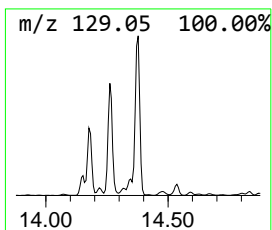
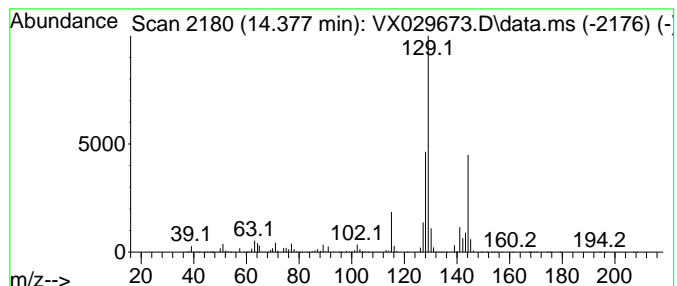
Quant Method : Z:\voasrv\HPCHEM1\MSVOA_X\Method\82X061822W.M
 Quant Title : SW846 8260

TIC Library : C:\Database\NIST20.L
 TIC Integration Parameters: LSCINT.P

 Peak Number 8 Naphthalene, 1,2-dihydro-4-... Concentration Rank 2

R.T.	EstConc	Area	Relative to ISTD	R.T.
14.378	158.60 ug/l	3340450	1,4-Dichlorobenzene-d4	12.024

Hit#	of 5	Tentative ID	MW	MolForm	CAS#	Qual
1		1H-Indene, 1,3-dimethyl-	144	C11H12	002177-48-2	97
2		Naphthalene, 1,2-dihydro-4-methyl-	144	C11H12	004373-13-1	93
3		1H-Indene, 4,7-dimethyl-	144	C11H12	006974-97-6	91
4		1H-Indene, 2,3-dimethyl-	144	C11H12	004773-82-4	87
5		1H-Indene, 1-ethenyl-2,3-dihydro-	144	C11H12	051783-46-1	86



Data Path : Z:\voasrv\HPCHEM1\MSVOA_X\Data\VX062122\
 Data File : VX029673.D
 Acq On : 21 Jun 2022 19:39
 Operator : JC/MD
 Sample : N3398-09
 Misc : 5.0mL/MSVOA_X/WATER
 ALS Vial : 18 Sample Multiplier: 1

Instrument :
 MSVOA_X
 ClientSampleId :
 ORA-521

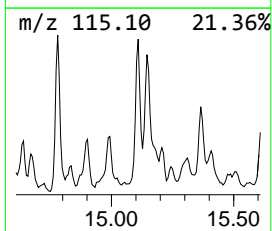
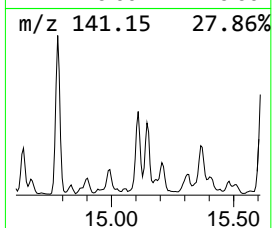
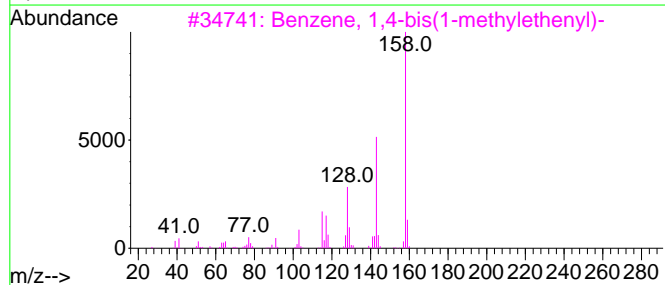
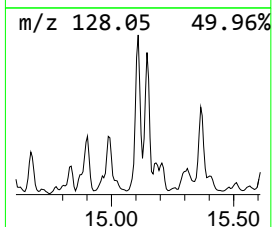
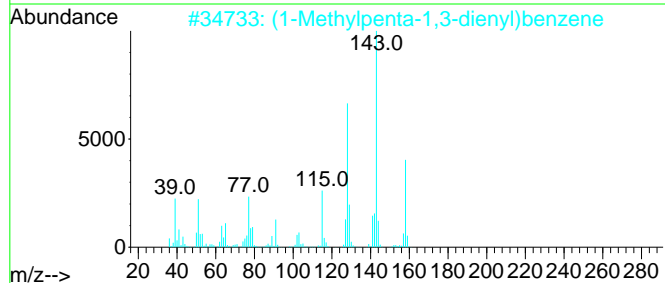
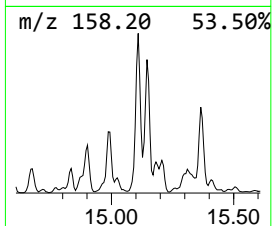
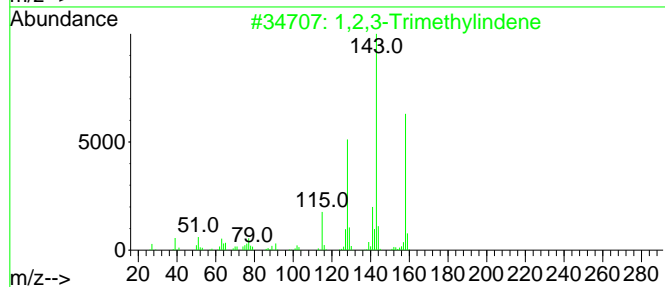
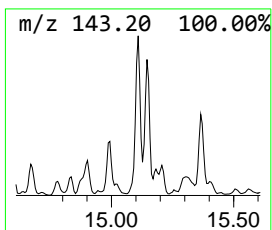
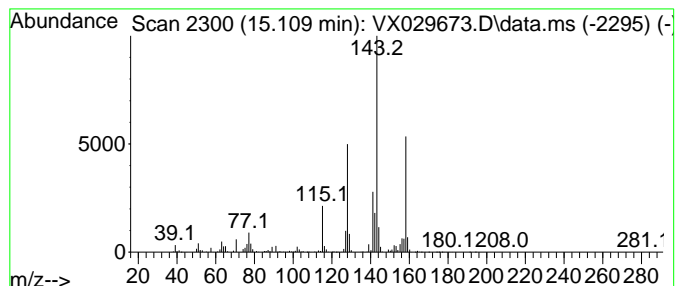
Quant Method : Z:\voasrv\HPCHEM1\MSVOA_X\Method\82X061822W.M
 Quant Title : SW846 8260

TIC Library : C:\Database\NIST20.L
 TIC Integration Parameters: LSCINT.P

 Peak Number 9 1,2,3-Trimethylindene Concentration Rank 7

R.T.	EstConc	Area	Relative to ISTD	R.T.
15.109	61.74 ug/l	1300380	1,4-Dichlorobenzene-d4	12.024

Hit#	of	5	Tentative ID	MW	MolForm	CAS#	Qual
1	1,2,3-Trimethylindene	158	C12H14	004773-83-5	91		
2	(1-Methylpenta-1,3-dienyl)benzene	158	C12H14	116669-49-9	90		
3	Benzene, 1,4-bis(1-methylethenyl)-	158	C12H14	001605-18-1	87		
4	Benzene, 1,3,5-trimethyl-2-(1,2-...	158	C12H14	029555-07-5	86		
5	1H-Indene, 1,1,3-trimethyl-	158	C12H14	002177-45-9	70		



Data Path : Z:\voasrv\HPCHEM1\MSVOA_X\Data\VX062122\
 Data File : VX029673.D
 Acq On : 21 Jun 2022 19:39
 Operator : JC/MD
 Sample : N3398-09
 Misc : 5.0mL/MSVOA_X/WATER
 ALS Vial : 18 Sample Multiplier: 1

Instrument :
 MSVOA_X
 ClientSampleId :
 ORA-521

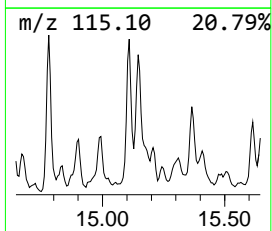
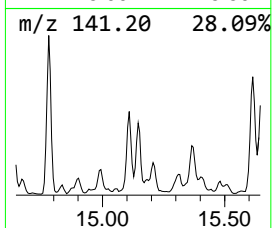
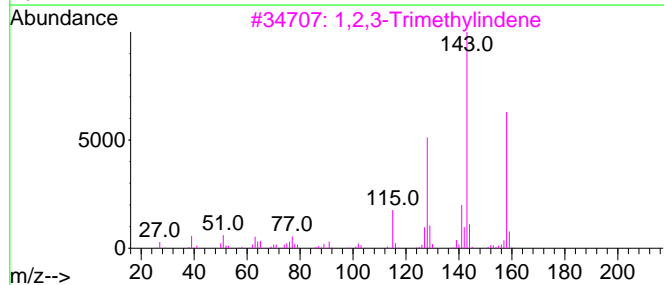
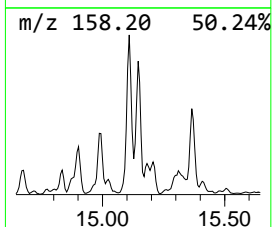
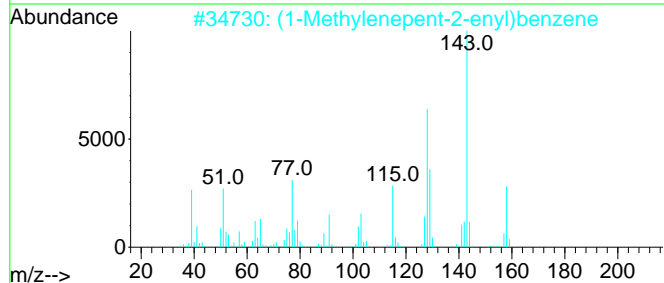
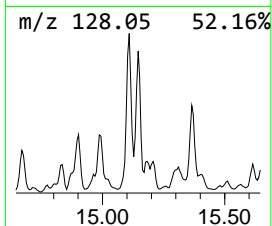
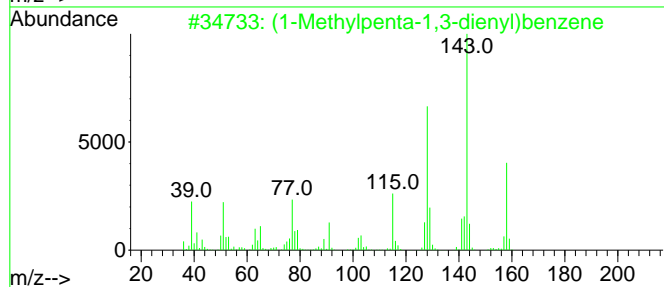
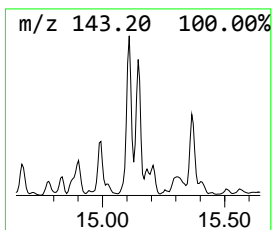
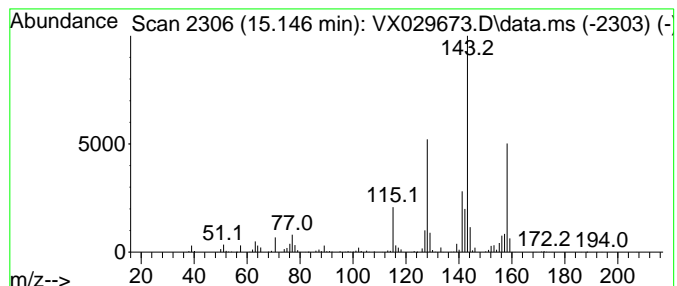
Quant Method : Z:\voasrv\HPCHEM1\MSVOA_X\Method\82X061822W.M
 Quant Title : SW846 8260

TIC Library : C:\Database\NIST20.L
 TIC Integration Parameters: LSCINT.P

 Peak Number 10 (1-Methylpenta-1,3-dienyl)b... Concentration Rank 6

R.T.	EstConc	Area	Relative to ISTD	R.T.
15.146	70.36 ug/l	1481790	1,4-Dichlorobenzene-d4	12.024

Hit#	of 5	Tentative ID	MW	MolForm	CAS#	Qual
1		(1-Methylpenta-1,3-dienyl)benzene	158	C12H14	116669-49-9	90
2		(1-Methylenepent-2-enyl)benzene	158	C12H14	084313-24-6	87
3		1,2,3-Trimethylindene	158	C12H14	004773-83-5	87
4		1H-Indene, 1,1,3-trimethyl-	158	C12H14	002177-45-9	64
5		Benzene, 1,3,5-trimethyl-2-(1,2-...	158	C12H14	029555-07-5	64



Data Path : Z:\voasrv\HPCHEM1\MSVOA_X\Data\VX062122\
 Data File : VX029673.D
 Acq On : 21 Jun 2022 19:39
 Operator : JC/MD
 Sample : N3398-09
 Misc : 5.0mL/MSVOA_X/WATER
 ALS Vial : 18 Sample Multiplier: 1

Instrument :
 MSVOA_X
 ClientSampleId :
 ORA-521

Quant Method : Z:\voasrv\HPCHEM1\MSVOA_X\Method\82X061822W.M
 Quant Title : SW846 8260

TIC Library : C:\Database\NIST20.L
 TIC Integration Parameters: LSCINT.P

TIC Top Hit name	RT	EstConc	Units	Response	--Internal Standard--			
					#	RT	Resp	Conc
Sulfur dioxide	1.246	127.0	ug/l	1895580	1	5.562	746566	50.0
Benzene, 1-ethy...	11.384	48.4	ug/l	1018500	4	12.024	1053080	50.0
Benzene, (1-met...	13.347	224.1	ug/l	4720720	4	12.024	1053080	50.0
Naphthalene, 1,...	13.426	55.0	ug/l	1157320	4	12.024	1053080	50.0
1H-Indene, 1,3-...	13.548	58.0	ug/l	1222300	4	12.024	1053080	50.0
(1-Methylbuta-1...	14.176	75.1	ug/l	1581760	4	12.024	1053080	50.0
1H-Indene, 2,3-...	14.262	122.5	ug/l	2578910	4	12.024	1053080	50.0
Naphthalene, 1,...	14.378	158.6	ug/l	3340450	4	12.024	1053080	50.0
1,2,3-Trimethyl...	15.109	61.7	ug/l	1300380	4	12.024	1053080	50.0
(1-Methylpenta-...	15.146	70.4	ug/l	1481790	4	12.024	1053080	50.0