

Data Path : Z:\voasrv\HPCHEM1\MSVOA_X\Data\VX062124\
 Data File : VX041985.D
 Acq On : 21 Jun 2024 17:10
 Operator : JC/MD
 Sample : P3002-06
 Misc : 5.0mL/MSVOA_X/WATER
 ALS Vial : 21 Sample Multiplier: 1

Instrument :
 MSVOA_X
 ClientSampleId :
 BP-VPB-196-GW-640-642

Integration Parameters: RTEINT.P

Integrator: RTE
 Smoothing : ON Filtering: 5
 Sampling : 1 Min Area: 3 % of largest Peak
 Start Thrs: 0.2 Max Peaks: 100
 Stop Thrs : 0 Peak Location: TOP

If leading or trailing edge < 100 prefer < Baseline drop else tangent >
 Peak separation: 5

Method : Z:\voasrv\HPCHEM1\MSVOA_X\Method\82X061824W.M
 Title : SW846 8260

Signal : TIC: VX041985.D\data.ms

peak #	R.T. min	first scan	max scan	last scan	PK TY	peak height	corr. area	corr. % max.	% of total
1	1.453	55	60	69	rBV	7457	11356	1.82%	0.337%
2	1.562	71	78	79	rBV5	3238	6571	1.06%	0.195%
3	2.391	207	214	220	rBV	4741	7860	1.26%	0.233%
4	4.611	569	578	593	rBV2	3312	11671	1.88%	0.346%
5	5.391	694	706	722	rBV	72168	212921	34.21%	6.315%
6	5.549	722	732	748	rVV	118643	339013	54.47%	10.054%
7	5.958	790	799	821	rBV2	70954	192535	30.93%	5.710%
8	6.763	920	931	948	rBV	186410	443186	71.21%	13.143%
9	8.653	1234	1241	1257	rBV	382088	622396	100.00%	18.458%
10	10.055	1465	1471	1485	rBV	413915	567027	91.10%	16.816%
11	11.085	1634	1640	1653	rBV	325720	436176	70.08%	12.936%
12	12.024	1789	1794	1810	rBV	418915	521199	83.74%	15.457%

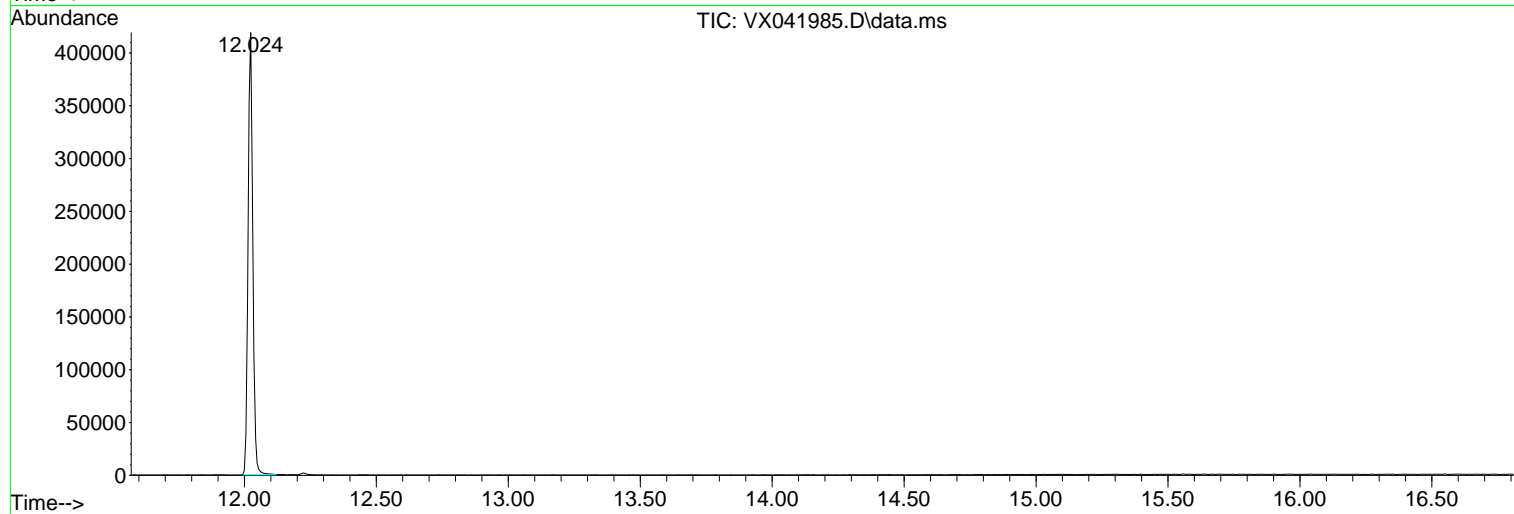
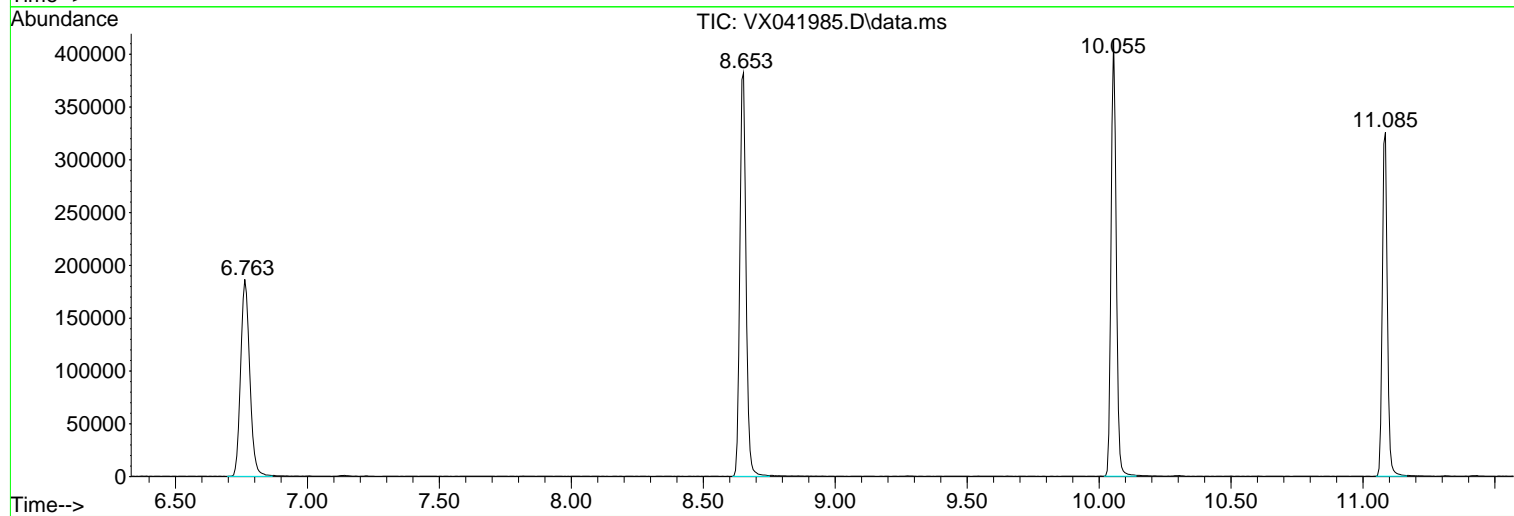
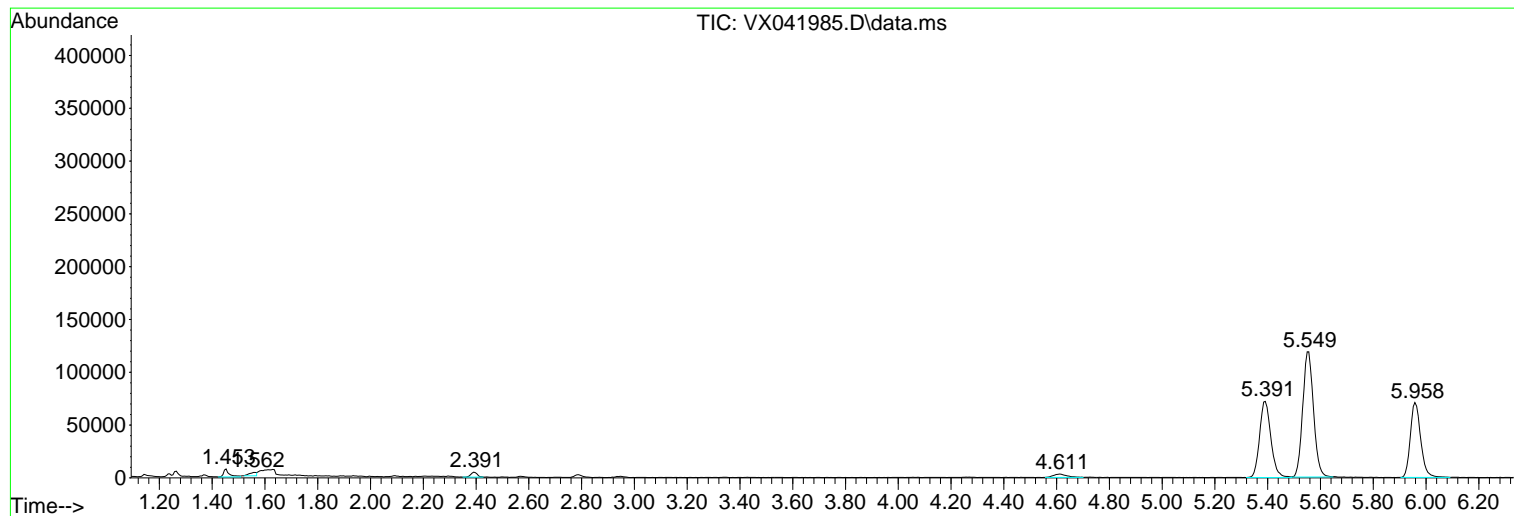
Sum of corrected areas: 3371911

Data Path : Z:\voasrv\HPCHEM1\MSVOA_X\Data\VX062124\
Data File : VX041985.D
Acq On : 21 Jun 2024 17:10
Operator : JC/MD
Sample : P3002-06
Misc : 5.0mL/MSVOA_X/WATER
ALS Vial : 21 Sample Multiplier: 1

Instrument :
MSVOA_X
ClientSampleId :
BP-VPB-196-GW-640-642

Quant Method : Z:\voasrv\HPCHEM1\MSVOA_X\Method\82X061824W.M
Quant Title : SW846 8260

TIC Library : C:\Database\NIST20.L
TIC Integration Parameters: LSCINT.P



Library Search Compound Report

Data Path : Z:\voasrv\HPCHEM1\MSVOA_X\Data\VX062124\
Data File : VX041985.D
Acq On : 21 Jun 2024 17:10
Operator : JC/MD
Sample : P3002-06
Misc : 5.0mL/MSVOA_X/WATER
ALS Vial : 21 Sample Multiplier: 1

Instrument :
MSVOA_X
ClientSampleId :
BP-VPB-196-GW-640-642

Quant Method : Z:\voasrv\HPCHEM1\MSVOA_X\Method\82X061824W.M
Quant Title : SW846 8260

TIC Library : C:\Database\NIST20.L
TIC Integration Parameters: LSCINT.P

No Library Search Compounds Detected

Data Path : Z:\voasrv\HPCHEM1\MSVOA_X\Data\VX062124\
Data File : VX041985.D
Acq On : 21 Jun 2024 17:10
Operator : JC/MD
Sample : P3002-06
Misc : 5.0mL/MSVOA_X/WATER
ALS Vial : 21 Sample Multiplier: 1

Instrument :
MSVOA_X
ClientSampleId :
BP-VPB-196-GW-640-642

Quant Method : Z:\voasrv\HPCHEM1\MSVOA_X\Method\82X061824W.M
Quant Title : SW846 8260

TIC Library : C:\Database\NIST20.L
TIC Integration Parameters: LSCINT.P

TIC Top Hit name	RT	EstConc	Units	Response	--Internal Standard--			
					#	RT	Resp	Conc
