

Data Path : Z:\VOASRV\HPCHEM1\MSVOA X\DATA\VX062218\
 Data File : VX002847.D
 Acq On : 22 Jun 2018 22:38
 Operator : JC/MD
 Sample : J3631-04
 Misc : 5.0mL/MSVOA X/WATER
 ALS Vial : 20 Sample Multiplier: 1

Instrument :
 MSVOA_X
 Client Sampled :
 S83-0019

Quant Time: Jun 23 00:28:11 2018
 Quant Method : Z:\VOASRV\HPCHEM1\MSVOA_X\METHOD\82X061518W.M
 Quant Title : SW846 8260
 QLast Update : Sat Jun 16 01:37:33 2018
 Response via : Initial Calibration

Internal Standards	R.T.	QIon	Response	Conc	Units	Dev(Min)
1) Pentafluorobenzene	5.67	168	235871	50.00	ug/l	0.00
34) 1,4-Difluorobenzene	6.87	114	323006	50.00	ug/l	0.00
63) Chlorobenzene-d5	10.12	117	305392	50.00	ug/l	0.00
72) 1,4-Dichlorobenzene-d4	12.09	152	195304	50.00	ug/l	0.00

System Monitoring Compounds

33) 1,2-Dichloroethane-d4	6.07	65	154985	43.24	ug/l	0.00
Spiked Amount	50.000		Recovery	=	86.48%	
35) Dibromofluoromethane	5.51	113	122308	47.44	ug/l	0.00
Spiked Amount	50.000		Recovery	=	94.88%	
50) Toluene-d8	8.72	98	469861	48.00	ug/l	0.00
Spiked Amount	50.000		Recovery	=	96.00%	
62) 4-Bromofluorobenzene	11.14	95	174861	47.14	ug/l	0.00
Spiked Amount	50.000		Recovery	=	94.28%	

Target Compounds

						Qvalue
3) Chloromethane	1.32	50	626	0.21	ug/l	# 70
5) Bromomethane	1.67	94	1325	0.71	ug/l	87
6) Chloroethane	1.84	64	674	0.33	ug/l	# 79
10) Methyl Iodide	2.53	142	1977	5.65	ug/l	# 91
11) Tert butyl alcohol	3.07	59	540	0.73	ug/l	# 73
13) Acrolein	2.27	56	868	9.29	ug/l	96
14) Allyl chloride	2.62	41	2460	0.47	ug/l	# 81
15) Acrylonitrile	3.17	53	4257	2.63	ug/l	# 37
16) Acetone	2.45	43	10689	6.76	ug/l	95
17) Carbon Disulfide	2.58	76	3411	0.55	ug/l	# 91
18) Methyl Acetate	2.84	43	135554	32.18	ug/l	# 55
20) Methylene Chloride	2.84	84	1447	0.45	ug/l	# 1
21) trans-1,2-Dichloroethene	3.17	96	1870	0.65	ug/l	# 80
25) 2-Butanone	4.71	43	2107	1.01	ug/l	# 55
27) cis-1,2-Dichloroethene	4.61	96	1541	0.53	ug/l	# 1
31) Cyclohexane	5.58	56	258538	61.11	ug/l	96
36) 1,1-Dichloropropene	5.67	75	16326	4.76	ug/l	# 51
38) Carbon Tetrachloride	5.67	117	22135	6.48	ug/l	# 14
39) Methylcyclohexane	7.46	83	278355	69.41	ug/l	100
40) Benzene	6.15	78	3032847	294.84	ug/l	100
42) 1,2-Dichloroethane	6.15	62	29000	7.28	ug/l	# 77
43) Isopropyl Acetate	6.45	43	5439	0.85	ug/l	# 63
44) Trichloroethene	7.22	130	7040	2.37	ug/l	98
45) 1,2-Dichloropropane	7.46	63	3405	1.26	ug/l	# 1
47) Bromodichloromethane	7.86	83	1328	0.42	ug/l	# 83
48) Methyl methacrylate	7.73	41	21014	6.39	ug/l	# 54
49) 1,4-Dioxane	7.63	88	29	0.47	ug/l	# 1
51) 4-Methyl-2-Pentanone	8.68	43	20953	5.07	ug/l	# 67
52) Toluene	8.79	92	89062	13.57	ug/l	100
53) t-1,3-Dichloropropene	8.42	75	229	2.45	ug/l	# 57
54) cis-1,3-Dichloropropene	9.05	75	141	3.25	ug/l	# 1
55) 1,1,2-Trichloroethane	9.17	97	41825	15.77	ug/l	# 18
56) Ethyl methacrylate	9.16	69	9479	2.32	ug/l	# 1
59) 2-Hexanone	9.31	43	846	0.27	ug/l	98

Data Path : Z:\VOASRV\HPCHEM1\MSVOA X\DATA\VX062218\
 Data File : VX002847.D
 Acq On : 22 Jun 2018 22:38
 Operator : JC/MD
 Sample : J3631-04
 Misc : 5.0mL/MSVOA X/WATER
 ALS Vial : 20 Sample Multiplier: 1

Instrument :
 MSVOA_X
 ClientSampleId :
 S83-0019

Quant Time: Jun 23 00:28:11 2018
 Quant Method : Z:\VOASRV\HPCHEM1\MSVOA_X\METHOD\82X061518W.M
 Quant Title : SW846 8260
 QLast Update : Sat Jun 16 01:37:33 2018
 Response via : Initial Calibration

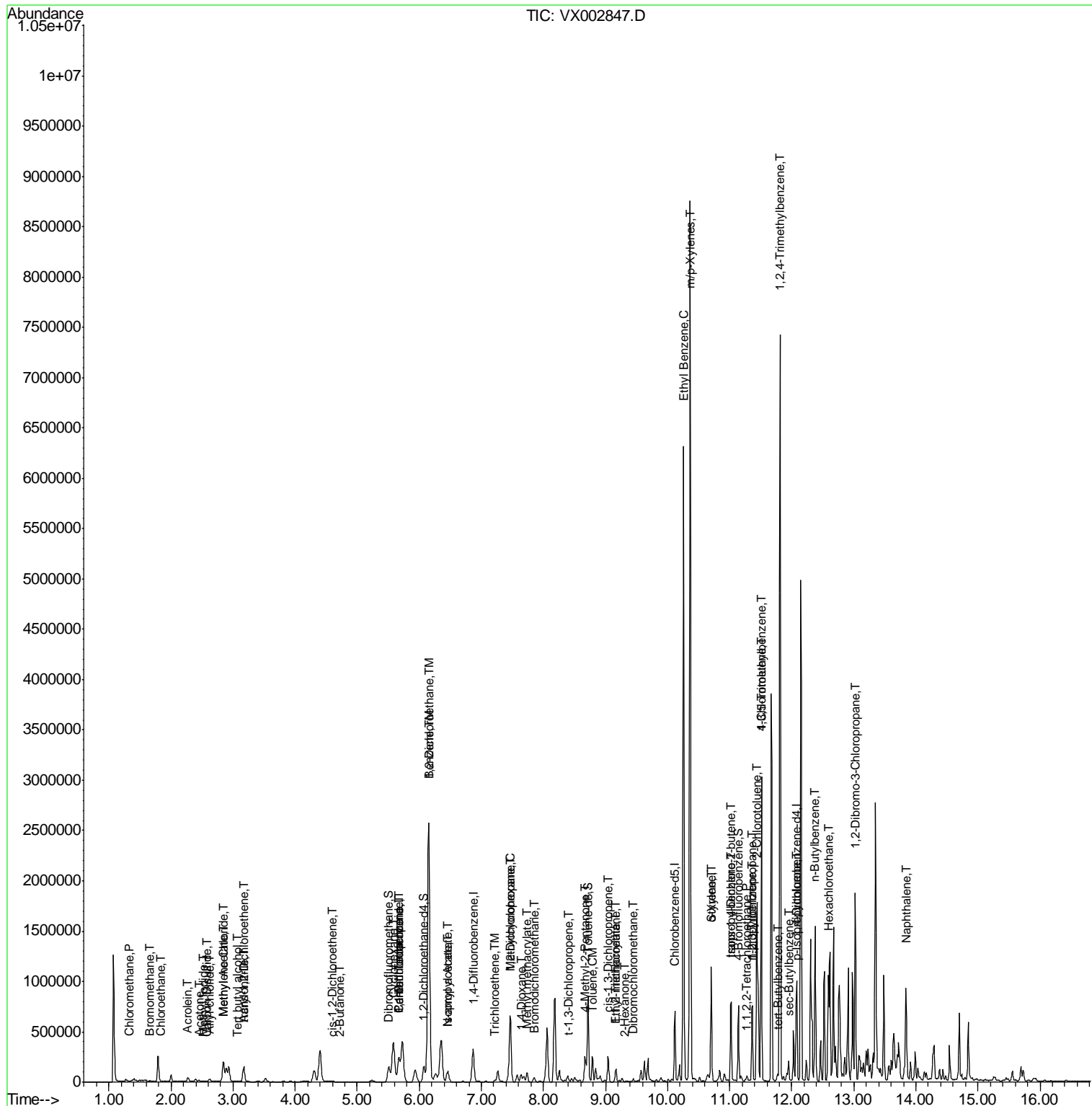
Internal Standards	R.T.	QIon	Response	Conc	Units	Dev(Min)
60) Dibromochloromethane	9.45	129	64	3.78	ug/l #	11
67) Ethyl Benzene	10.26	91	3446743	272.47	ug/l	100
68) m/p-Xylenes	10.37	106	2064890	423.16	ug/l	98
69) o-Xylene	10.70	106	231492	48.28	ug/l	99
70) Styrene	10.70	104	12150	1.54	ug/l #	1
73) Isopropylbenzene	11.02	105	412105	31.55	ug/l	100
74) N-amyl acetate	6.45	43	5439	0.84	ug/l #	59
75) 1,1,2,2-Tetrachloroethane	11.28	83	2565	0.66	ug/l #	38
76) 1,2,3-Trichloropropane	11.37	75	3438	0.93	ug/l #	1
78) n-propylbenzene	11.37	91	456574	30.48	ug/l	100
79) 2-Chlorotoluene	11.44	91	168550	18.85	ug/l #	40
80) 1,3,5-Trimethylbenzene	11.51	105	1246403	112.91	ug/l	100
81) trans-1,4-Dichloro-2-buten	11.02	75	5103	8.24	ug/l #	67
82) 4-Chlorotoluene	11.51	91	137521	13.03	ug/l #	44
83) tert-Butylbenzene	11.77	119	23281	2.19	ug/l	95
84) 1,2,4-Trimethylbenzene	11.81	105	3052569	271.00	ug/l	97
85) sec-Butylbenzene	11.95	105	99228	7.50	ug/l	81
86) p-Isopropyltoluene	12.07	119	129001	10.78	ug/l	99
89) n-Butylbenzene	12.38	91	156077	14.79	ug/l #	1
90) Hexachloroethane	12.59	117	47512	26.76	ug/l #	1
92) 1,2-Dibromo-3-Chloropropan	13.02	75	5593	6.92	ug/l #	1
95) Naphthalene	13.84	128	562104	42.85	ug/l	98

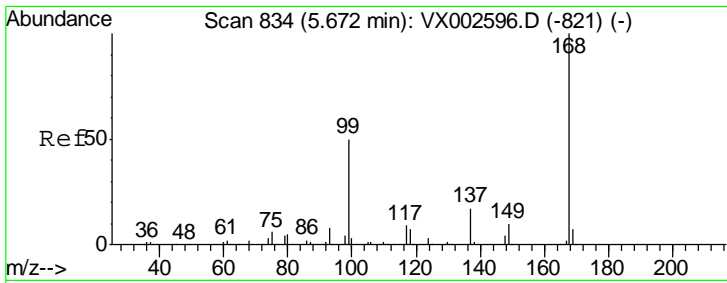
(#) = qualifier out of range (m) = manual integration (+) = signals summed

Data Path : Z:\VOASRV\HPCHEM1\MSVOA X\DATA\VX062218\
 Data File : VX002847.D
 Acq On : 22 Jun 2018 22:38
 Operator : JC/MD
 Sample : J3631-04
 Misc : 5.0mL/MSVOA X/WATER
 ALS Vial : 20 Sample Multiplier: 1

Instrument :
 MSVOA_X
 Client Sampled :
 S83-0019

Quant Time: Jun 23 00:28:11 2018
 Quant Method : Z:\VOASRV\HPCHEM1\MSVOA_X\METHOD\82X061518W.M
 Quant Title : SW846 8260
 QLast Update : Sat Jun 16 01:37:33 2018
 Response via : Initial Calibration

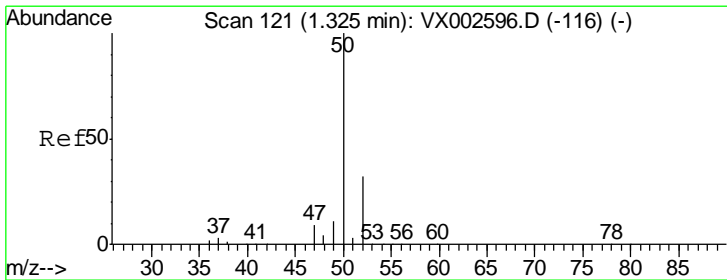
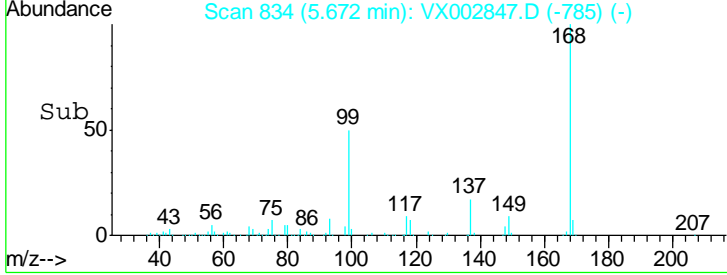
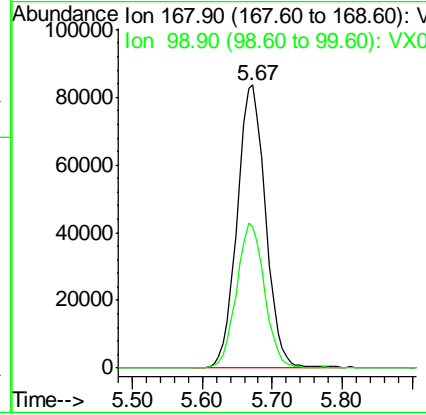
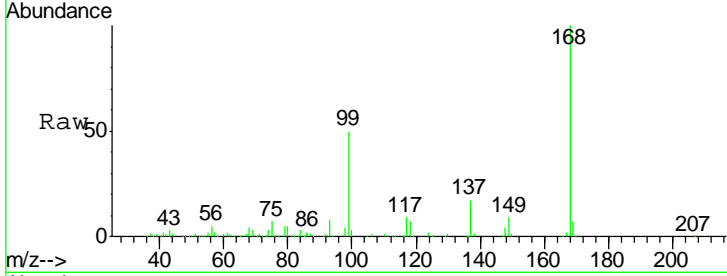




#1
 Pentafluorobenzene
 Concen: 50.00 ug/l
 RT: 5.67 min Scan# 834
 Delta R.T. 0.00 min
 Lab File: VX002847.D
 Acq: 22 Jun 2018 22:38

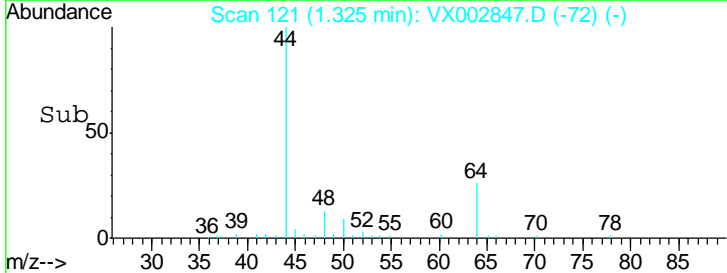
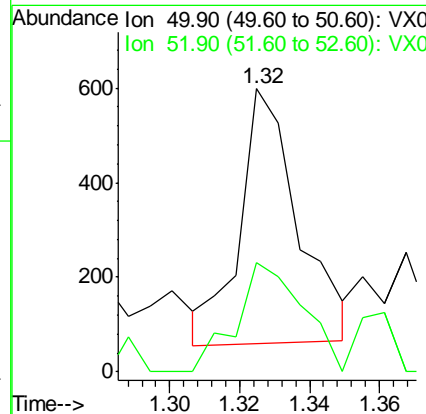
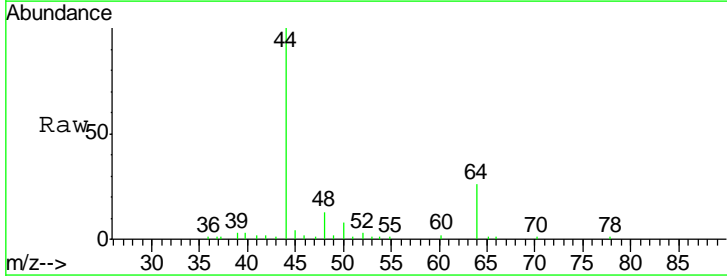
Instrument :
 MSVOA_X
 ClientSampled :
 S83-0019

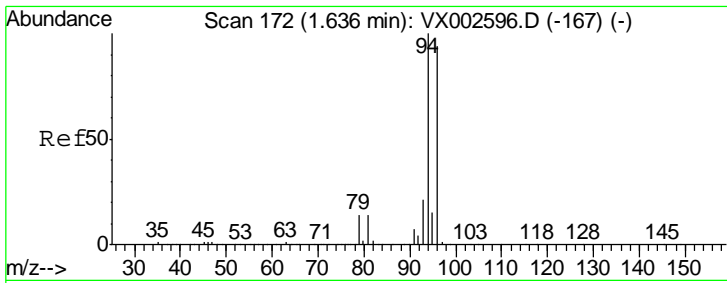
Tgt Ion: 168 Resp: 235871
 Ion Ratio Lower Upper
 168 100
 99 50.0 39.3 58.9



#3
 Chloromethane
 Concen: 0.21 ug/l
 RT: 1.32 min Scan# 121
 Delta R.T. 0.00 min
 Lab File: VX002847.D
 Acq: 22 Jun 2018 22:38

Tgt Ion: 50 Resp: 626
 Ion Ratio Lower Upper
 50 100
 52 48.9 25.7 38.5#

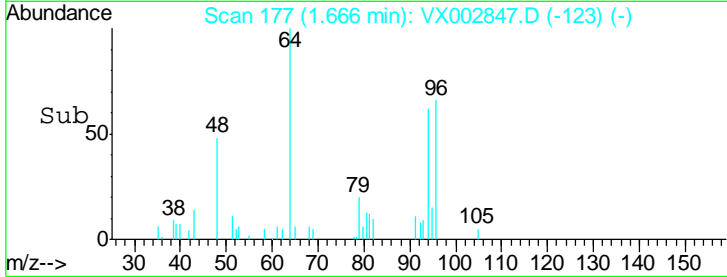
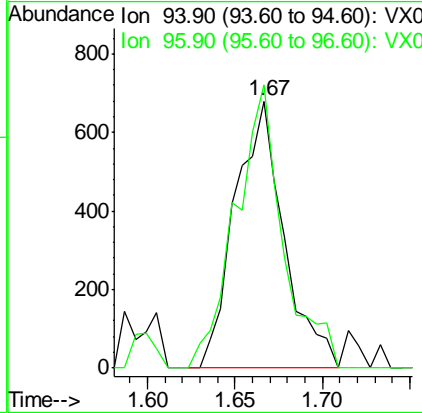
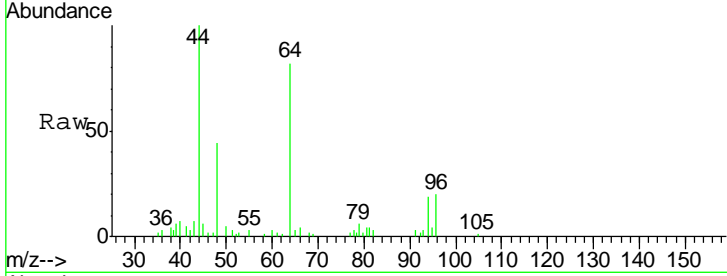




#5
 Bromomethane
 Concen: 0.71 ug/l
 RT: 1.67 min Scan# 177
 Delta R.T. 0.03 min
 Lab File: VX002847.D
 Acq: 22 Jun 2018 22:38

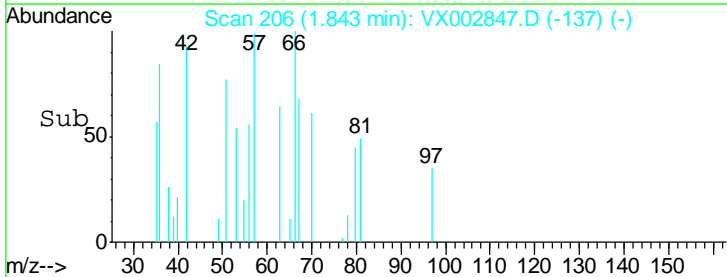
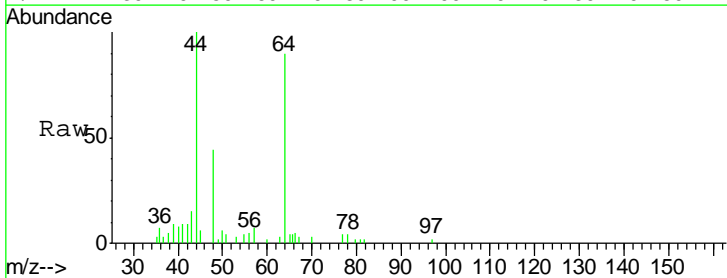
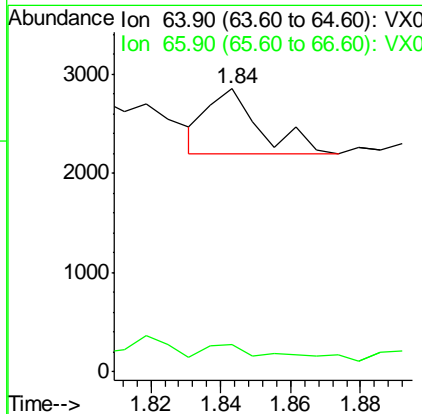
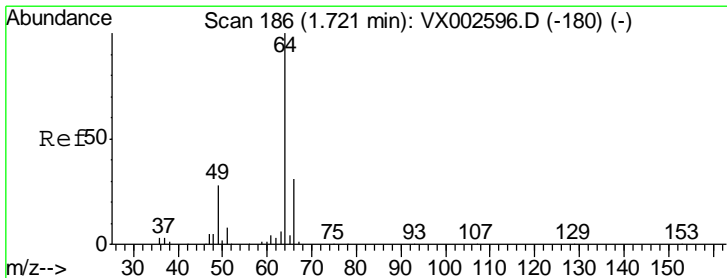
Instrument :
 MSVOA_X
ClientSampled :
 S83-0019

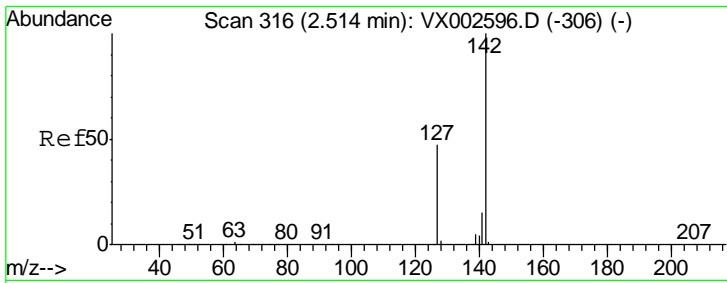
Tgt Ion: 94 Resp: 1325
 Ion Ratio Lower Upper
 94 100
 96 106.0 74.9 112.3



#6
 Chloroethane
 Concen: 0.33 ug/l
 RT: 1.84 min Scan# 206
 Delta R.T. 0.12 min
 Lab File: VX002847.D
 Acq: 22 Jun 2018 22:38

Tgt Ion: 64 Resp: 674
 Ion Ratio Lower Upper
 64 100
 66 20.0 25.5 38.3#

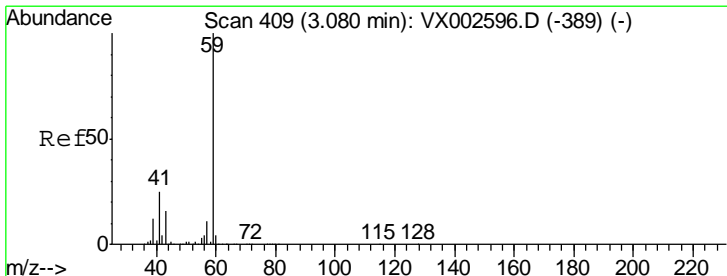
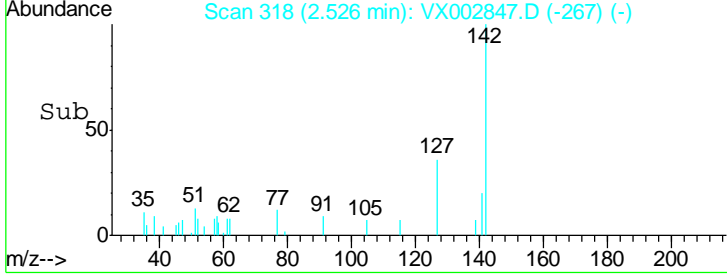
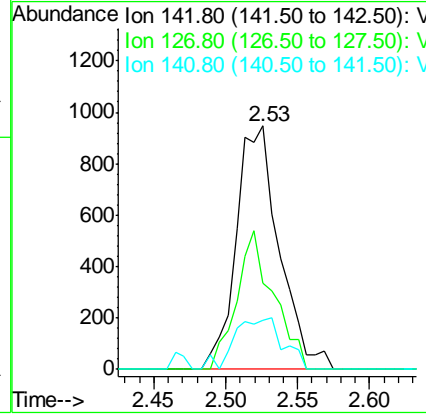
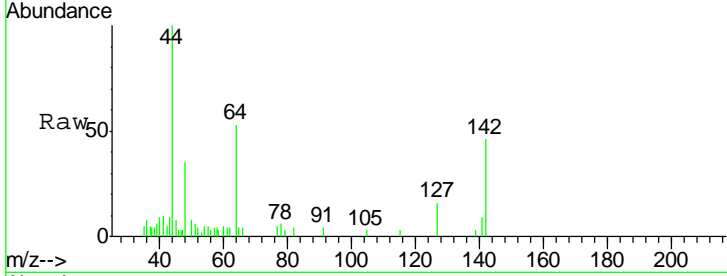




#10
 Methyl Iodide
 Concen: 5.65 ug/l
 RT: 2.53 min Scan# 318
 Delta R.T. 0.01 min
 Lab File: VX002847.D
 Acq: 22 Jun 2018 22:38

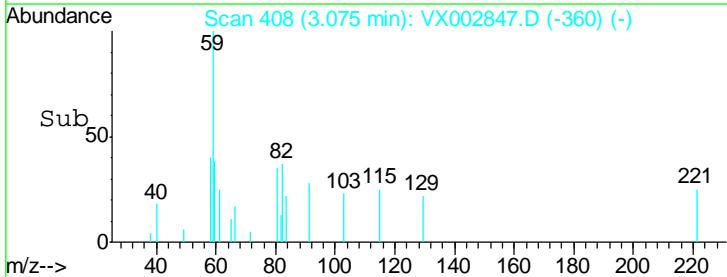
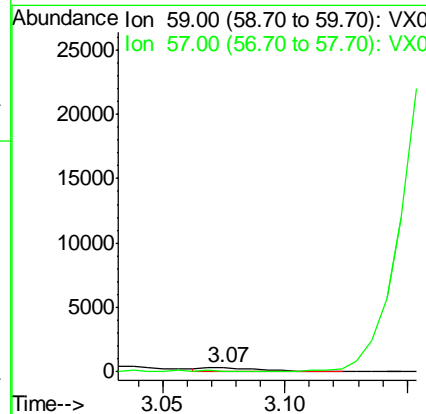
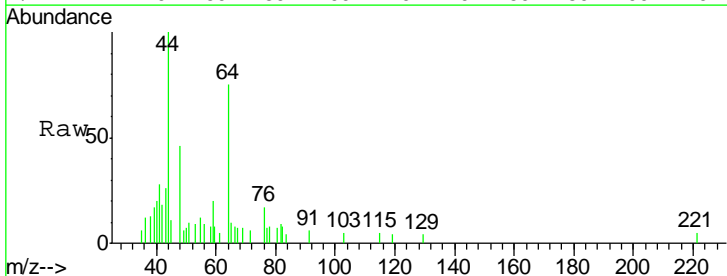
Instrument :
 MSVOA_X
 ClientSampled :
 S83-0019

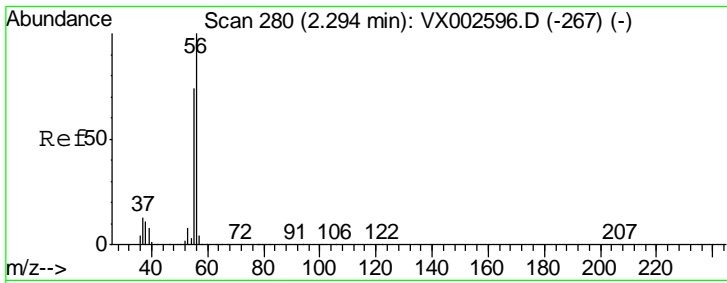
Tgt Ion	Resp	Lower	Upper
142	1977		
127	48.7	36.6	55.0
141	23.8	11.3	16.9#



#11
 Tert butyl alcohol
 Concen: 0.73 ug/l
 RT: 3.07 min Scan# 408
 Delta R.T. -0.01 min
 Lab File: VX002847.D
 Acq: 22 Jun 2018 22:38

Tgt Ion	Resp	Lower	Upper
59	540		
57	0.0	8.2	12.2#

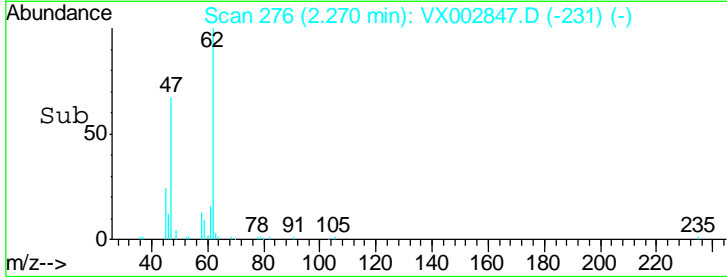
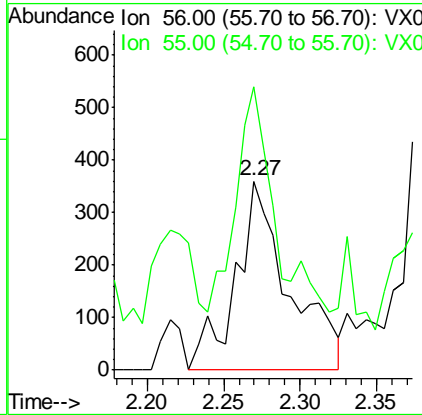
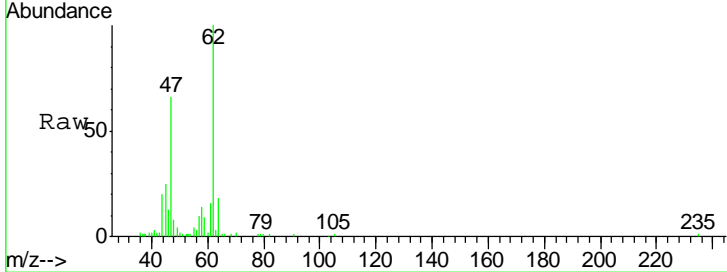




#13
 Acrolein
 Concen: 9.29 ug/l
 RT: 2.27 min Scan# 276
 Delta R.T. -0.02 min
 Lab File: VX002847.D
 Acq: 22 Jun 2018 22:38

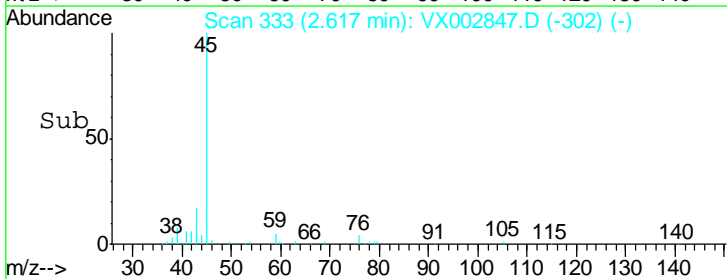
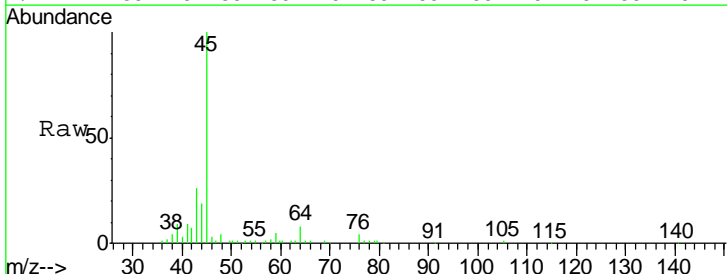
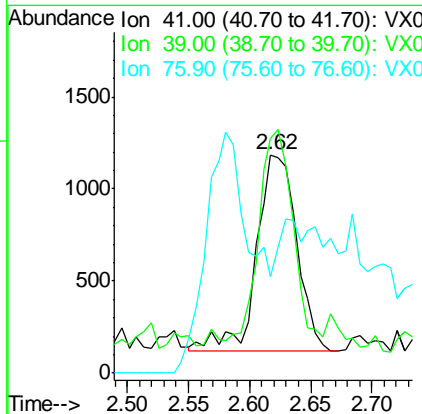
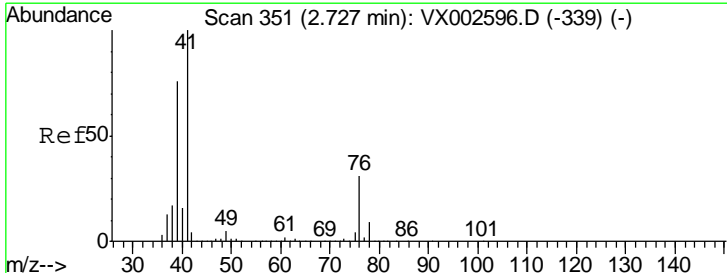
Instrument :
 MSVOA_X
ClientSampled :
 S83-0019

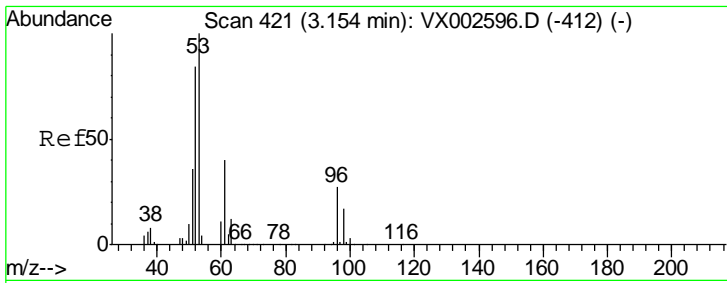
Tgt Ion	Resp	Lower	Upper
56	100		
55	74.5	57.0	85.4



#14
 Allyl chloride
 Concen: 0.47 ug/l
 RT: 2.62 min Scan# 333
 Delta R.T. -0.11 min
 Lab File: VX002847.D
 Acq: 22 Jun 2018 22:38

Tgt Ion	Resp	Lower	Upper
41	100		
39	88.3	56.8	85.2#
76	37.9	23.8	35.8#

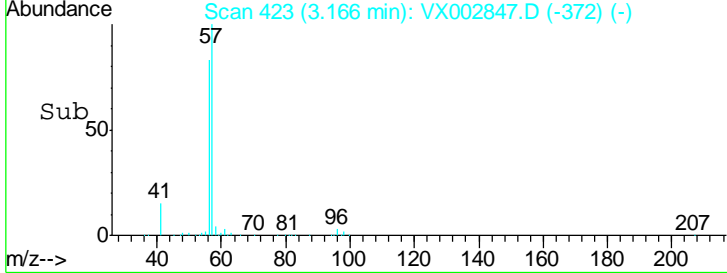
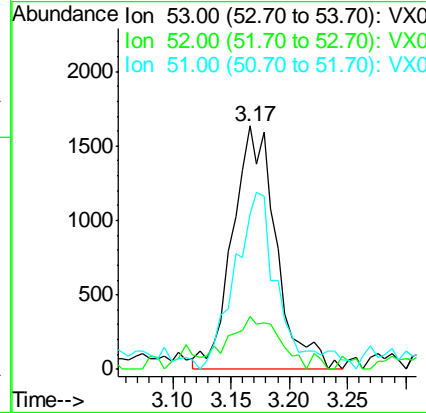
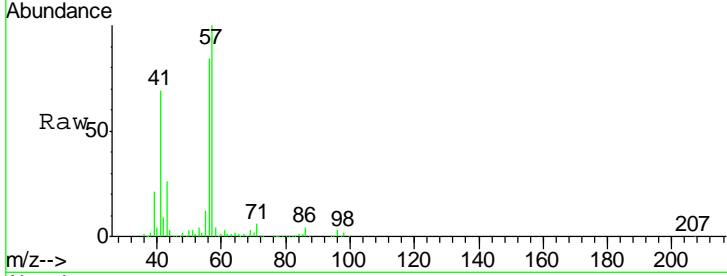




#15
 Acrylonitrile
 Concen: 2.63 ug/l
 RT: 3.17 min Scan# 423
 Delta R.T. 0.01 min
 Lab File: VX002847.D
 Acq: 22 Jun 2018 22:38

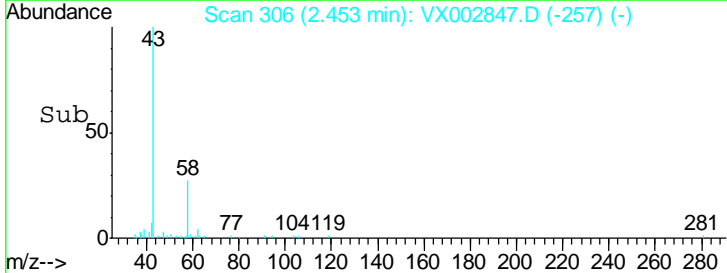
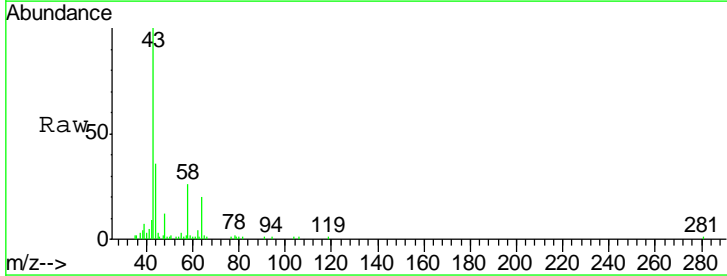
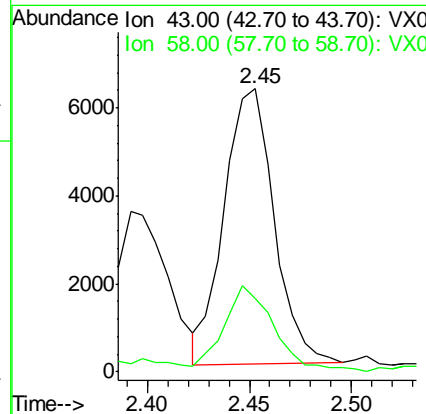
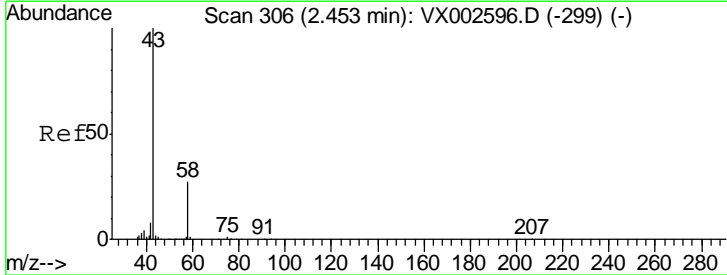
Instrument :
 MSVOA_X
ClientSampled :
 S83-0019

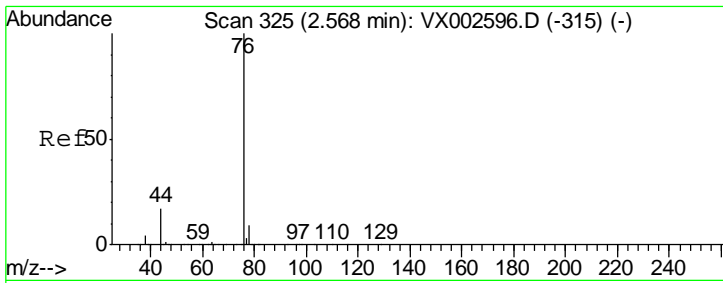
Tgt Ion	Resp	Lower	Upper
53	100		
52	25.0	66.7	100.1#
51	72.8	29.9	44.9#



#16
 Acetone
 Concen: 6.76 ug/l
 RT: 2.45 min Scan# 306
 Delta R.T. 0.00 min
 Lab File: VX002847.D
 Acq: 22 Jun 2018 22:38

Tgt Ion	Resp	Lower	Upper
43	100		
58	24.8	22.1	33.1

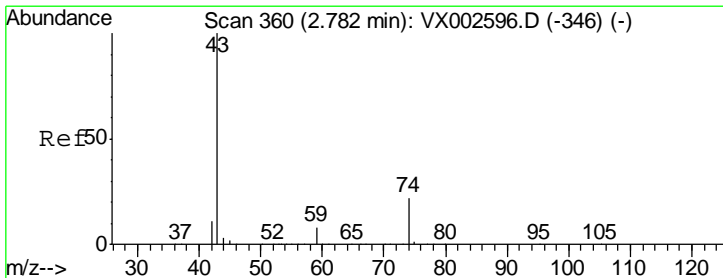
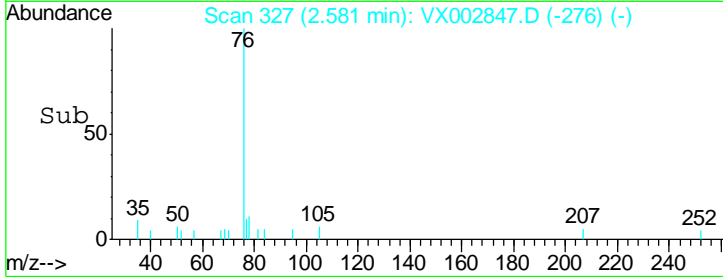
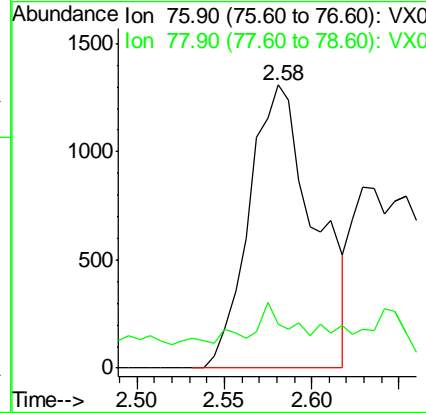
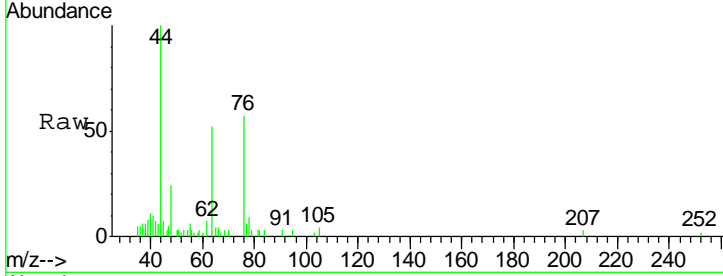




#17
 Carbon Disulfide
 Concen: 0.55 ug/l
 RT: 2.58 min Scan# 327
 Delta R.T. 0.01 min
 Lab File: VX002847.D
 Acq: 22 Jun 2018 22:38

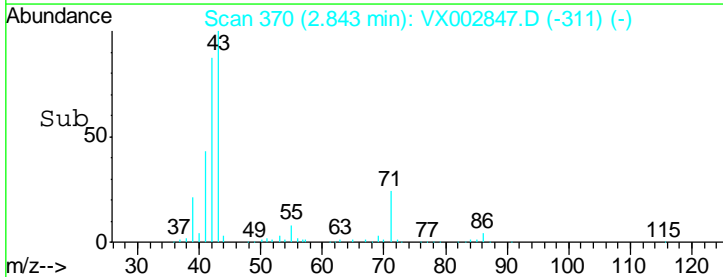
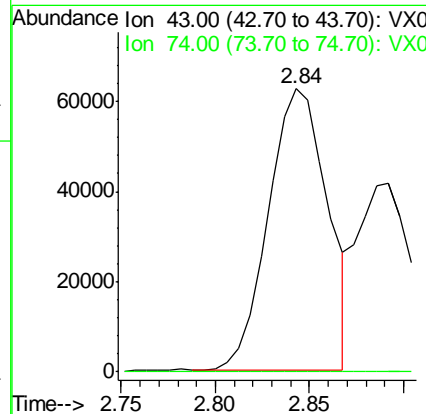
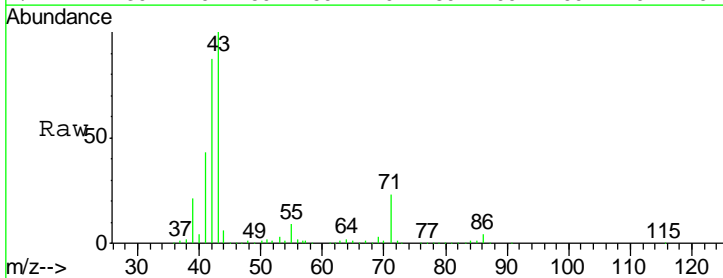
Instrument :
 MSVOA_X
 ClientSampled :
 S83-0019

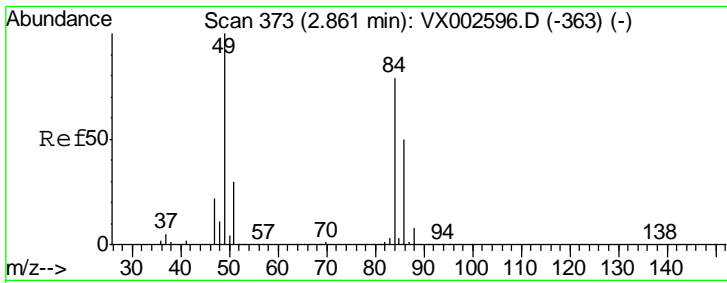
Tgt Ion	Resp	Lower	Upper
76	100		
78	5.2	6.9	10.3#



#18
 Methyl Acetate
 Concen: 32.18 ug/l
 RT: 2.84 min Scan# 370
 Delta R.T. 0.06 min
 Lab File: VX002847.D
 Acq: 22 Jun 2018 22:38

Tgt Ion	Resp	Lower	Upper
43	100		
74	0.0	16.7	25.1#

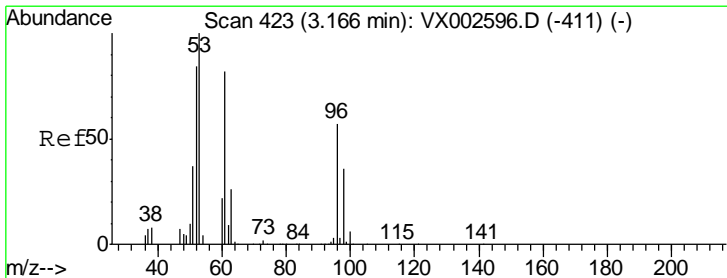
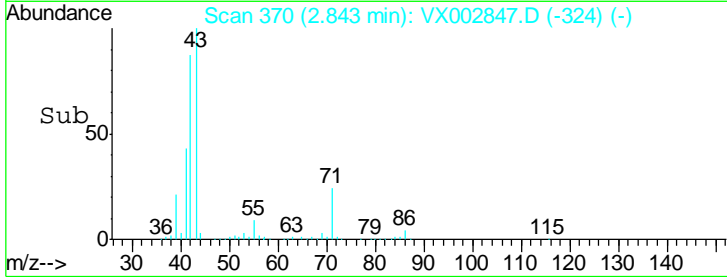
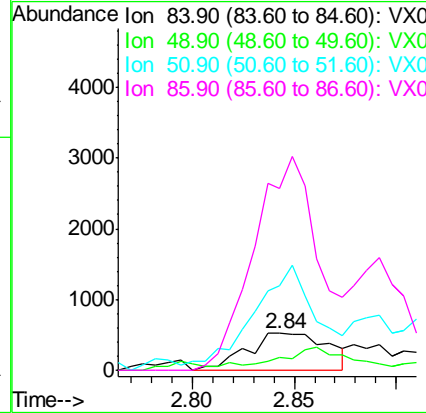
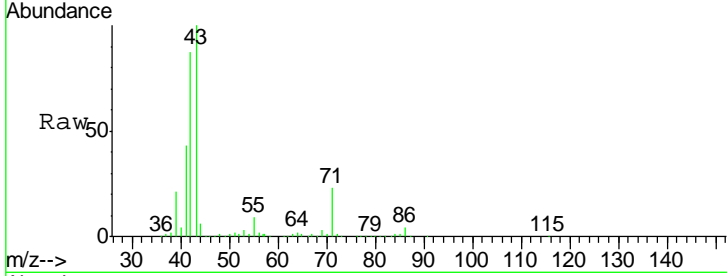




#20
 Methylene Chloride
 Concen: 0.45 ug/l
 RT: 2.84 min Scan# 370
 Delta R.T. -0.02 min
 Lab File: VX002847.D
 Acq: 22 Jun 2018 22:38

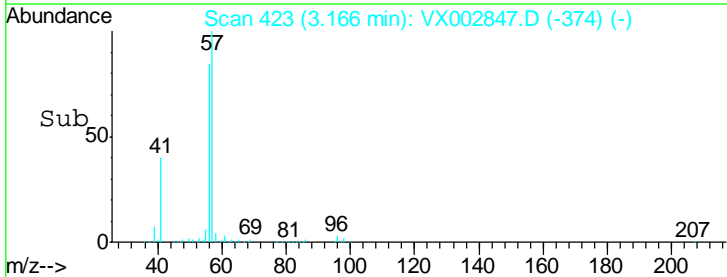
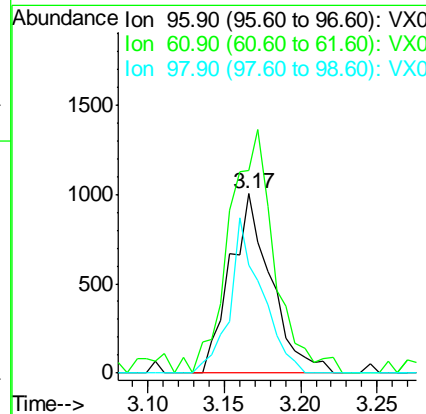
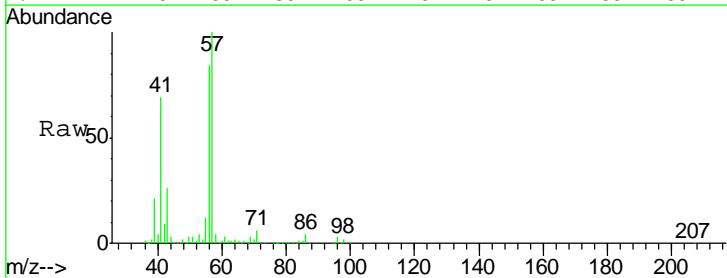
Instrument :
 MSVOA_X
 ClientSampled :
 S83-0019

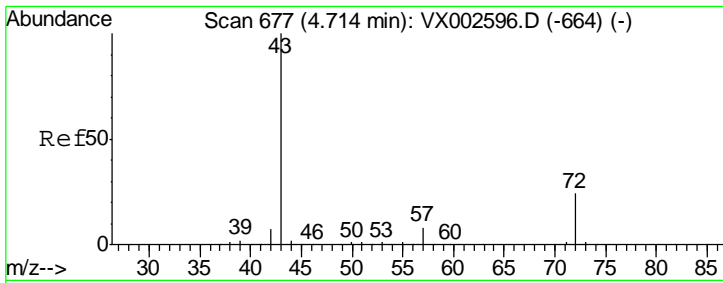
Tgt Ion	Resp	Lower	Upper
84	1447		
49	17.5	107.8	161.6#
51	205.2	32.8	49.2#
86	492.9	52.5	78.7#



#21
 trans-1,2-Dichloroethene
 Concen: 0.65 ug/l
 RT: 3.17 min Scan# 423
 Delta R.T. 0.00 min
 Lab File: VX002847.D
 Acq: 22 Jun 2018 22:38

Tgt Ion	Resp	Lower	Upper
96	1870		
61	113.2	117.0	175.4#
98	60.2	52.4	78.6

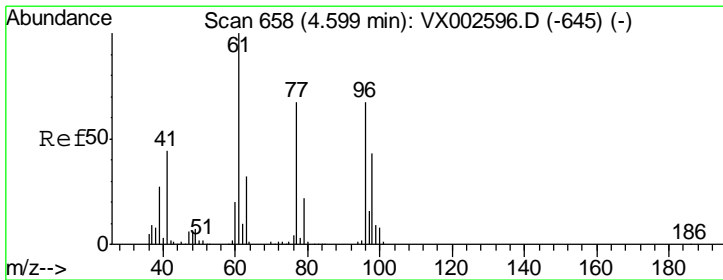
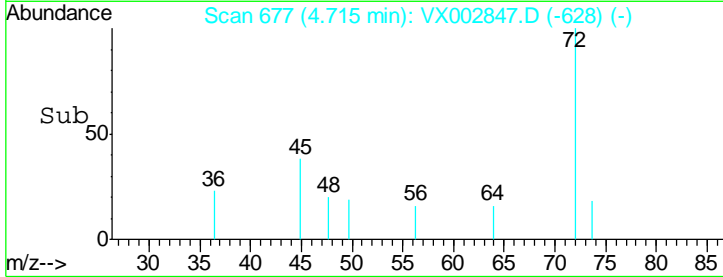
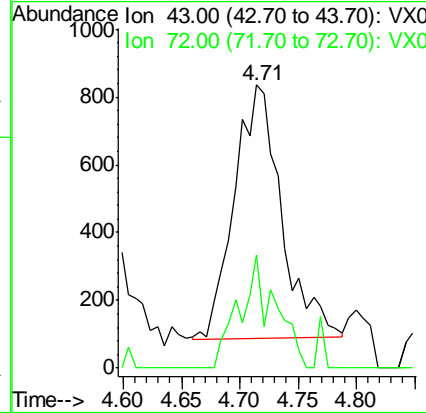
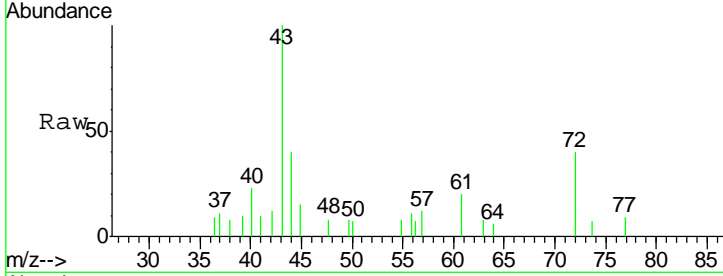




#25
 2-Butanone
 Concen: 1.01 ug/l
 RT: 4.71 min Scan# 677
 Delta R.T. 0.00 min
 Lab File: VX002847.D
 Acq: 22 Jun 2018 22:38

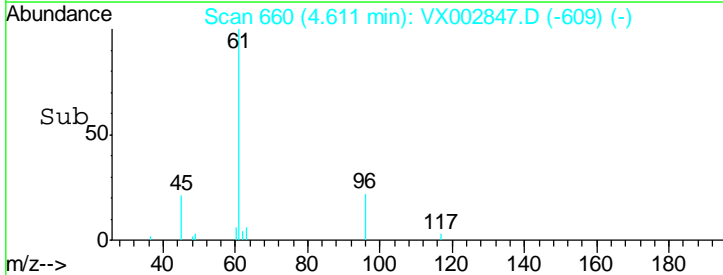
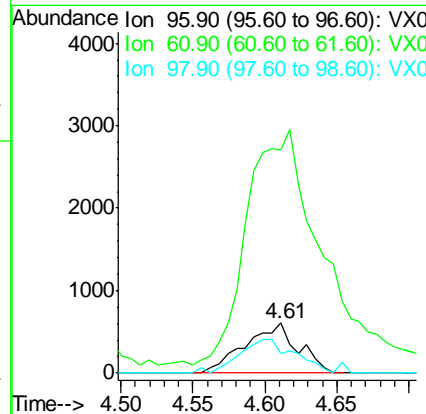
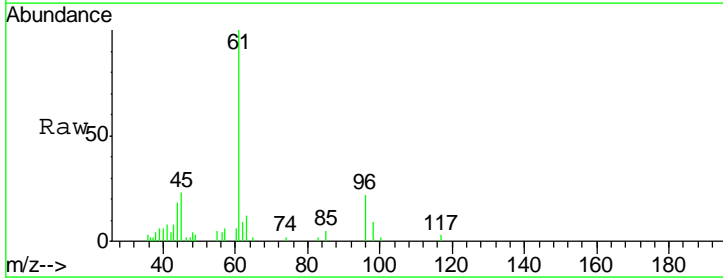
Instrument :
 MSVOA_X
 ClientSampled :
 S83-0019

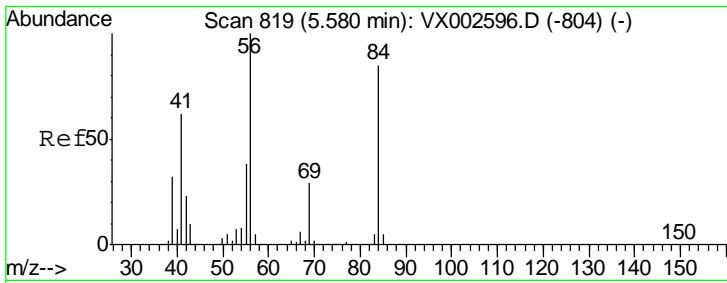
Tgt Ion	Resp	Lower	Upper
43	100		
72	45.1	18.5	27.7#



#27
 cis-1,2-Dichloroethene
 Concen: 0.53 ug/l
 RT: 4.61 min Scan# 660
 Delta R.T. 0.01 min
 Lab File: VX002847.D
 Acq: 22 Jun 2018 22:38

Tgt Ion	Resp	Lower	Upper
96	100		
61	695.1	0.0	330.2#
98	71.6	0.0	130.2

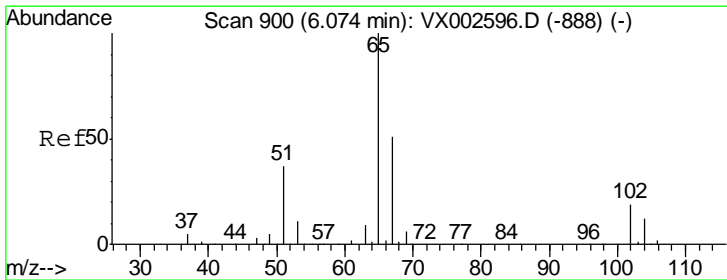
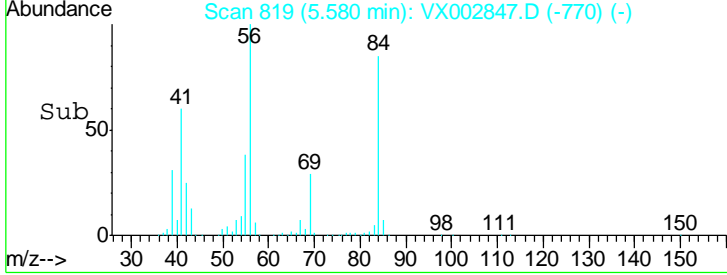
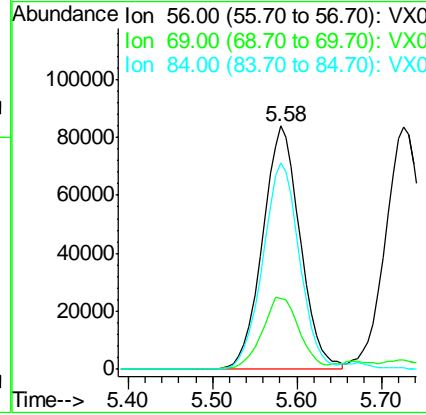
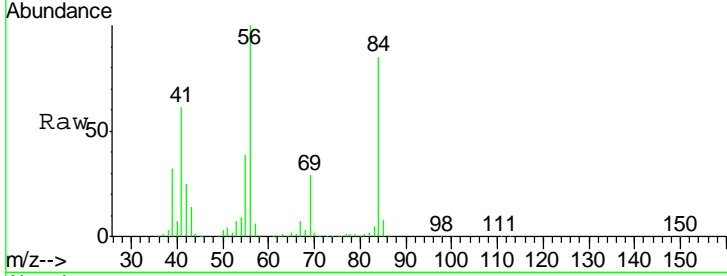




#31
 Cyclohexane
 Concen: 61.11 ug/l
 RT: 5.58 min Scan# 819
 Delta R.T. 0.00 min
 Lab File: VX002847.D
 Acq: 22 Jun 2018 22:38

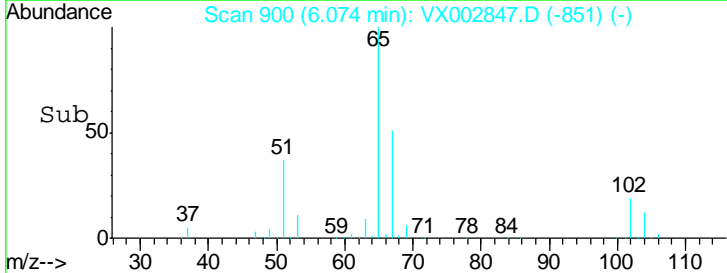
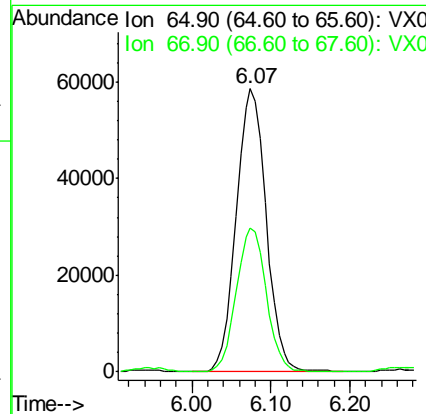
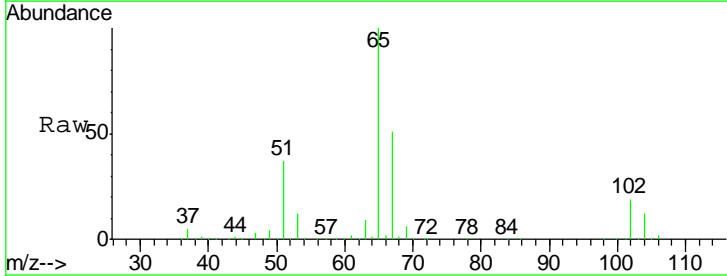
Instrument :
 MSVOA_X
 ClientSampled :
 S83-0019

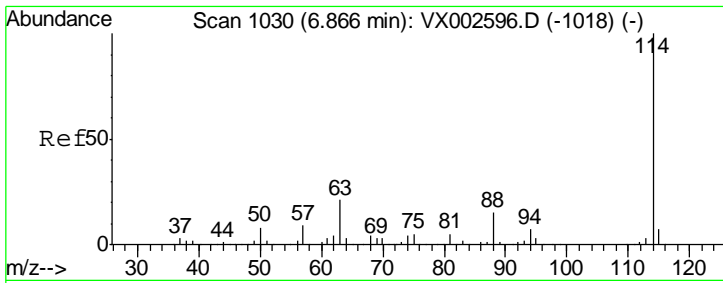
Tgt Ion	Resp	Lower	Upper
56	100		
69	28.9	23.7	35.5
84	85.0	64.1	96.1



#33
 1,2-Dichloroethane-d4
 Concen: 43.24 ug/l
 RT: 6.07 min Scan# 900
 Delta R.T. 0.00 min
 Lab File: VX002847.D
 Acq: 22 Jun 2018 22:38

Tgt Ion	Resp	Lower	Upper
65	100		
67	50.6	0.0	102.6

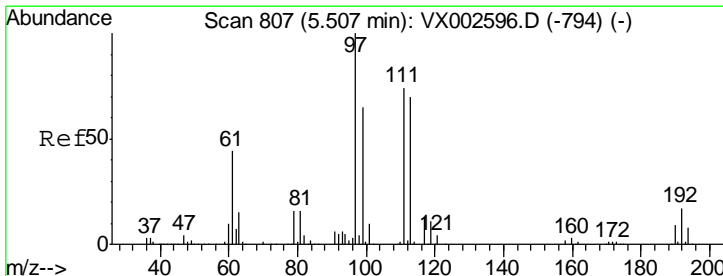
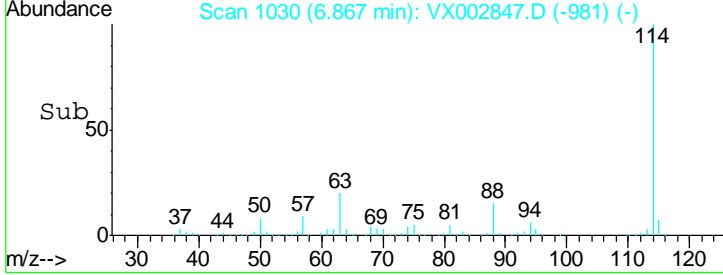
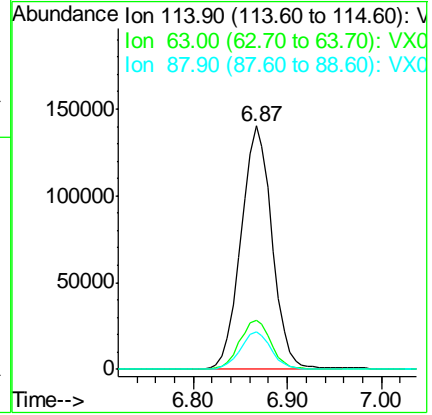
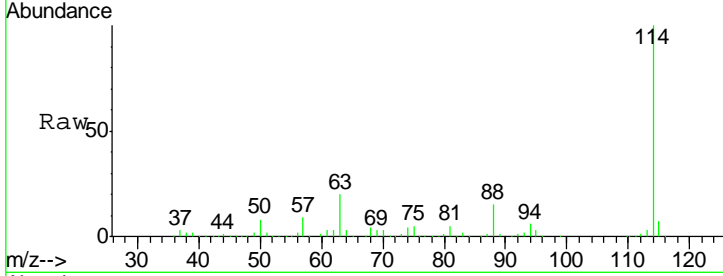




#34
 1,4-Difluorobenzene
 Concen: 50.00 ug/l
 RT: 6.87 min Scan# 1030
 Delta R.T. 0.00 min
 Lab File: VX002847.D
 Acq: 22 Jun 2018 22:38

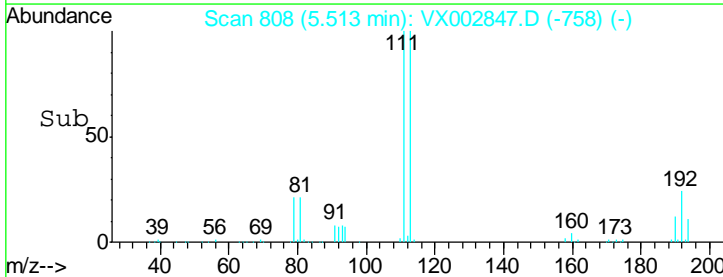
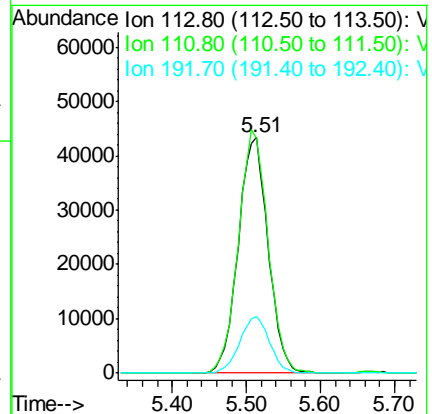
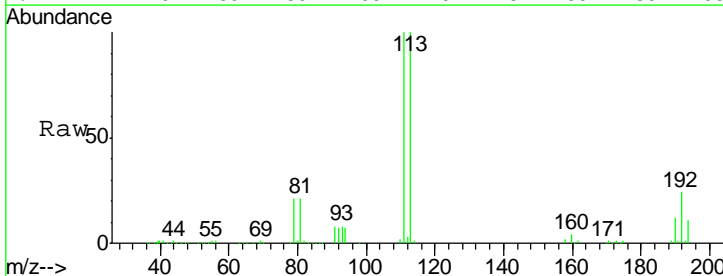
Instrument : MSVOA_X
 ClientSampled : S83-0019

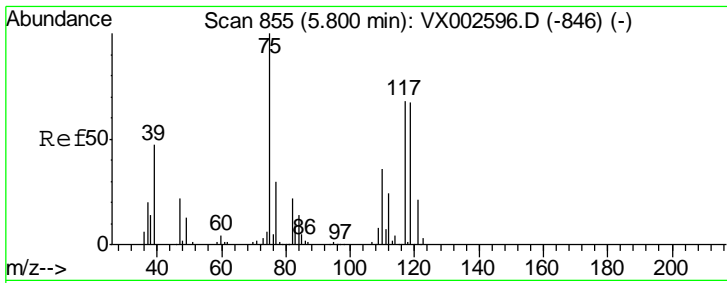
Tgt Ion	Resp	Lower	Upper
114	323006		
63	20.4	0.0	41.4
88	15.2	0.0	30.0



#35
 Dibromofluoromethane
 Concen: 47.44 ug/l
 RT: 5.51 min Scan# 808
 Delta R.T. 0.01 min
 Lab File: VX002847.D
 Acq: 22 Jun 2018 22:38

Tgt Ion	Resp	Lower	Upper
113	122308		
111	102.3	81.4	122.0
192	23.9	19.1	28.7

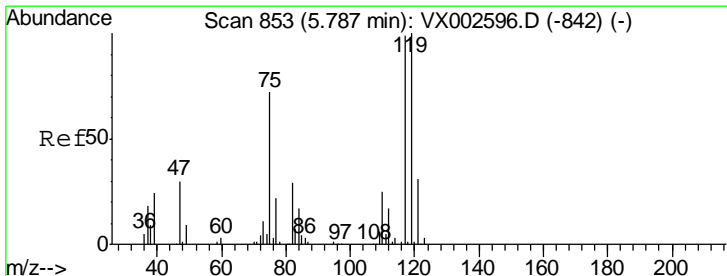
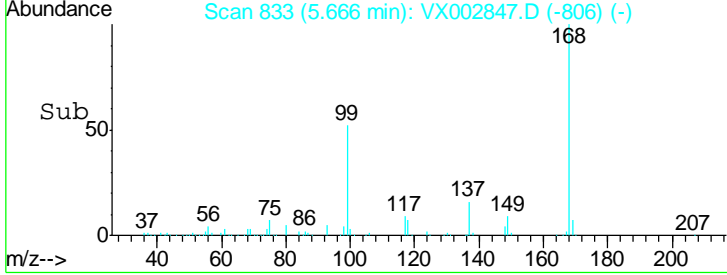
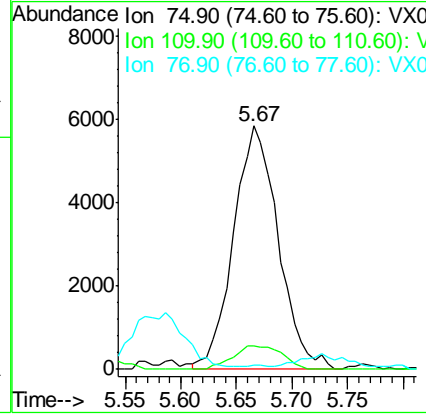
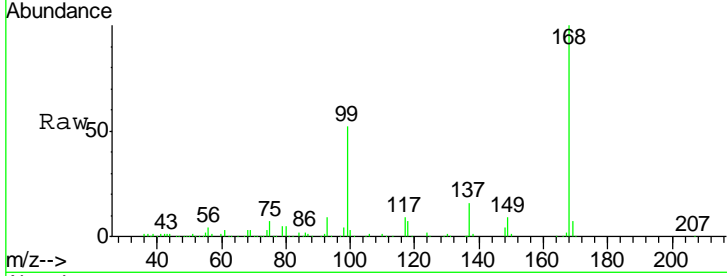




#36
 1,1-Dichloropropene
 Concen: 4.76 ug/l
 RT: 5.67 min Scan# 833
 Delta R.T. -0.13 min
 Lab File: VX002847.D
 Acq: 22 Jun 2018 22:38

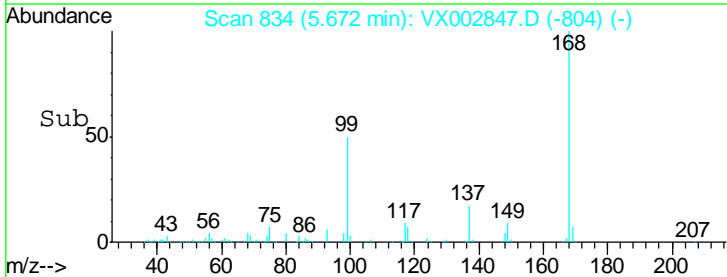
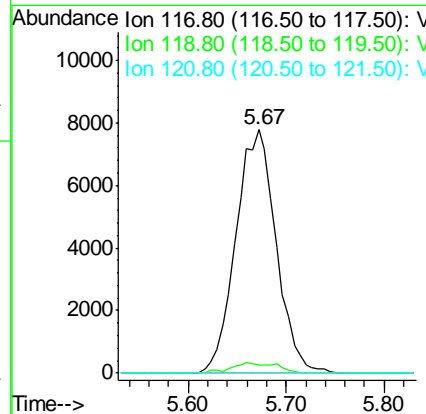
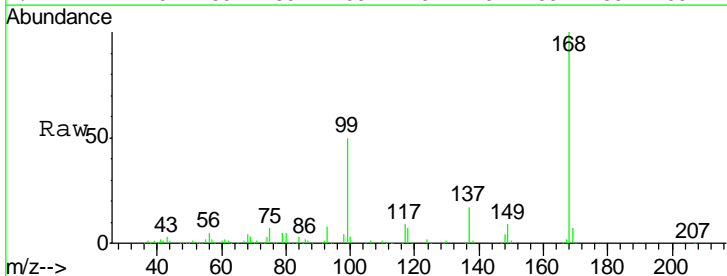
Instrument : MSVOA_X
 ClientSampled : S83-0019

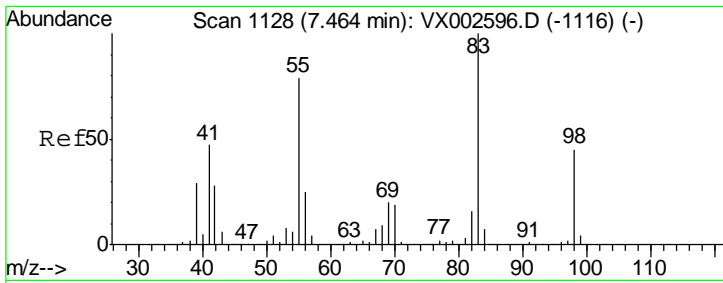
Tgt Ion	Resp	Lower	Upper
75	16326		
110	10.6	18.1	54.4#
77	0.0	24.3	36.5#



#38
 Carbon Tetrachloride
 Concen: 6.48 ug/l
 RT: 5.67 min Scan# 834
 Delta R.T. -0.12 min
 Lab File: VX002847.D
 Acq: 22 Jun 2018 22:38

Tgt Ion	Resp	Lower	Upper
117	22135		
119	3.4	77.4	116.0#
121	0.0	24.4	36.6#

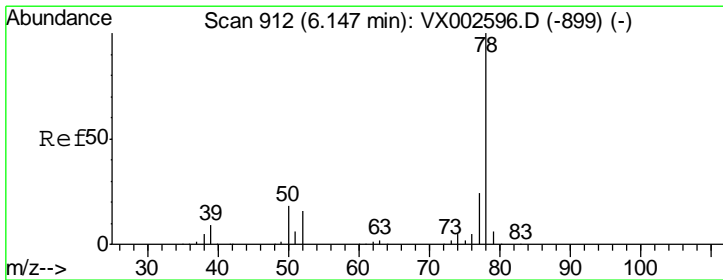
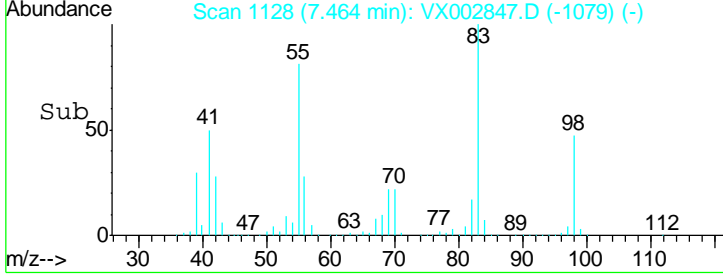
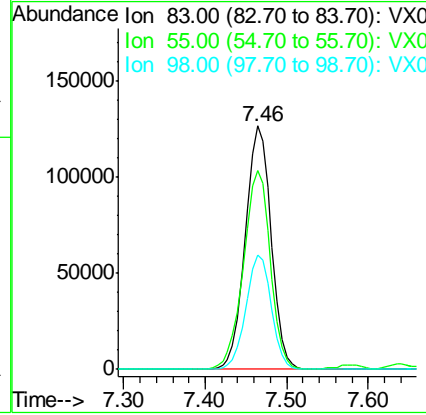
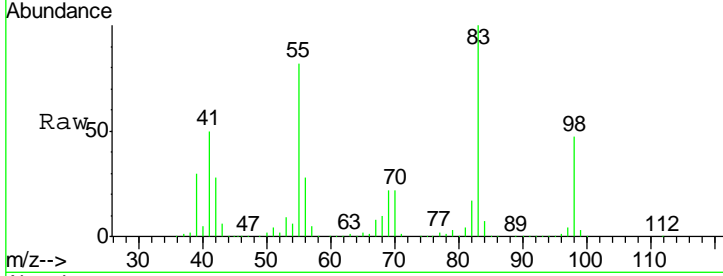




#39
 Methylcyclohexane
 Concen: 69.41 ug/l
 RT: 7.46 min Scan# 1128
 Delta R.T. 0.00 min
 Lab File: VX002847.D
 Acq: 22 Jun 2018 22:38

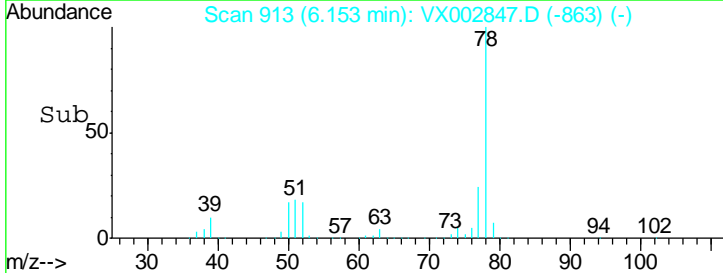
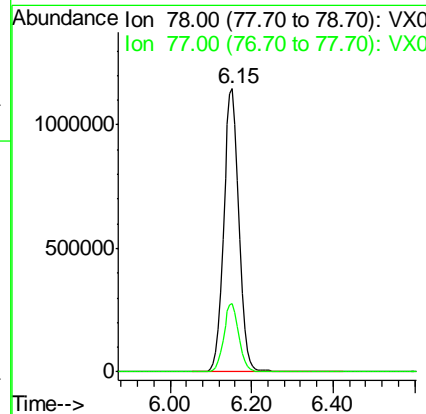
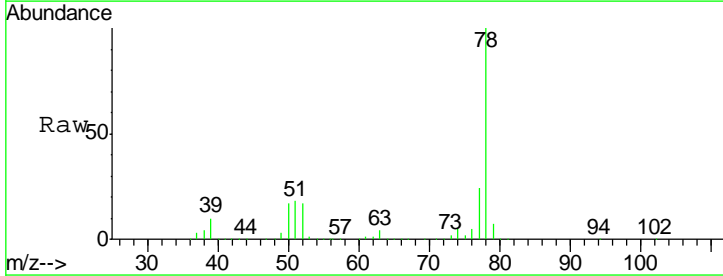
Instrument :
 MSVOA_X
ClientSampled :
 S83-0019

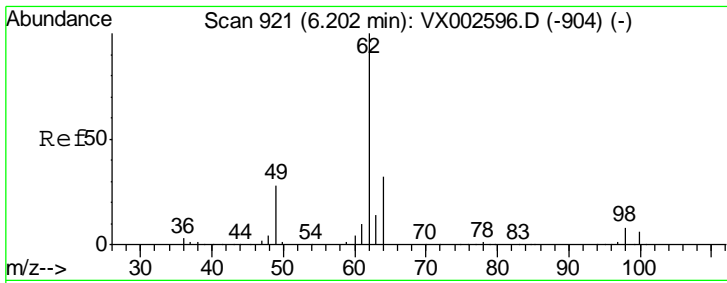
Tgt Ion	Resp	Lower	Upper
83	100		
55	81.5	65.4	98.0
98	47.0	37.4	56.0



#40
 Benzene
 Concen: 294.84 ug/l
 RT: 6.15 min Scan# 913
 Delta R.T. 0.01 min
 Lab File: VX002847.D
 Acq: 22 Jun 2018 22:38

Tgt Ion	Resp	Lower	Upper
78	100		
77	24.1	19.1	28.7

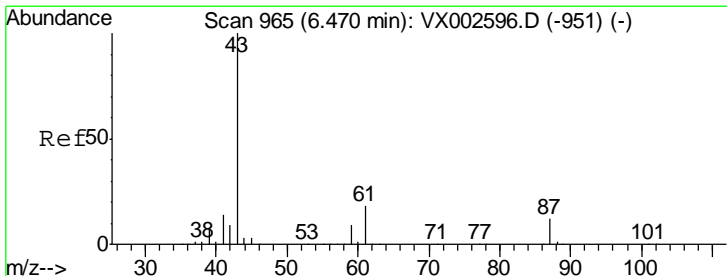
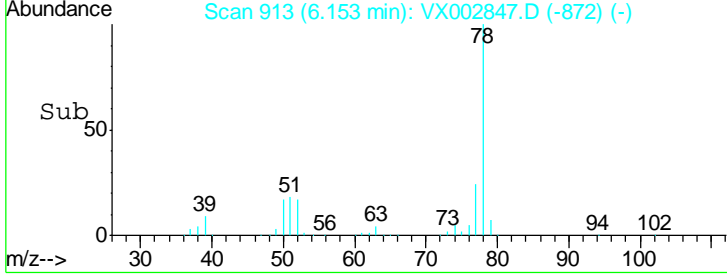
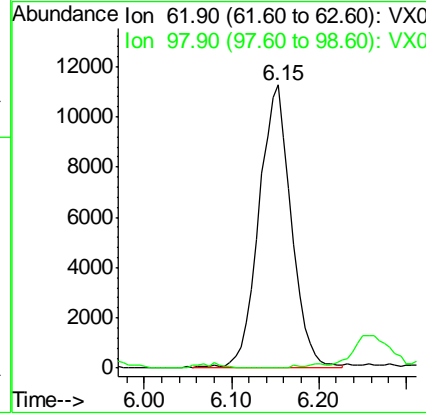
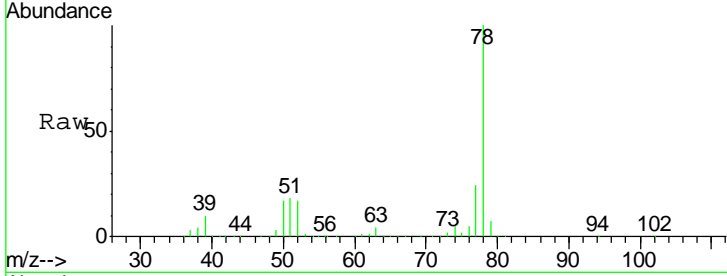




#42
 1,2-Dichloroethane
 Concen: 7.28 ug/l
 RT: 6.15 min Scan# 913
 Delta R.T. -0.05 min
 Lab File: VX002847.D
 Acq: 22 Jun 2018 22:38

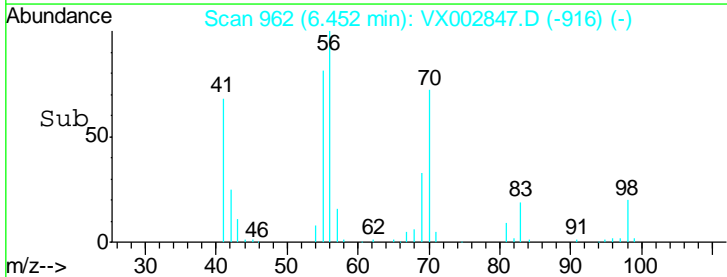
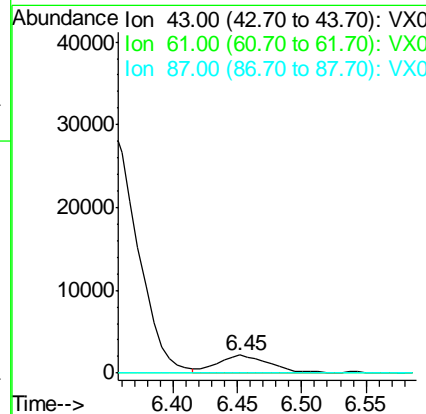
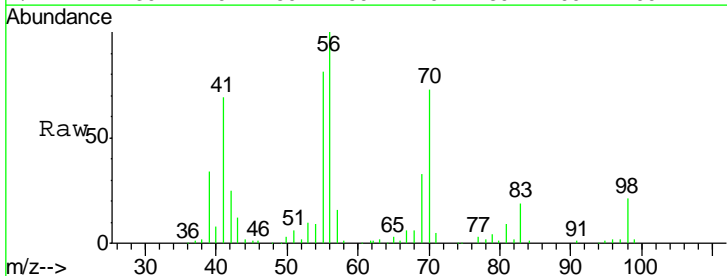
Instrument : MSVOA_X
 ClientSampled : S83-0019

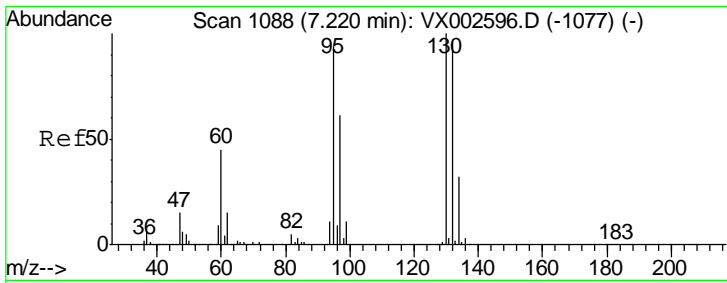
Tgt Ion	Resp	Lower	Upper
62	100		
98	0.0	0.0	16.6



#43
 Isopropyl Acetate
 Concen: 0.85 ug/l
 RT: 6.45 min Scan# 962
 Delta R.T. -0.02 min
 Lab File: VX002847.D
 Acq: 22 Jun 2018 22:38

Tgt Ion	Resp	Lower	Upper
43	100		
61	0.0	14.4	21.6#
87	0.0	9.5	14.3#

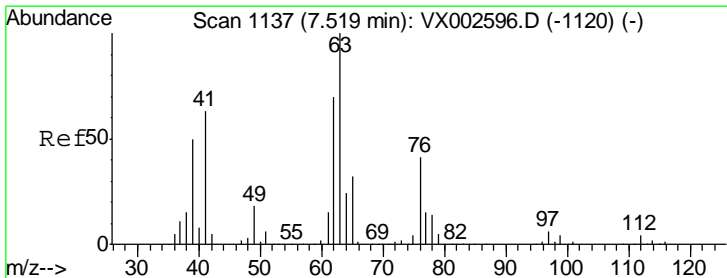
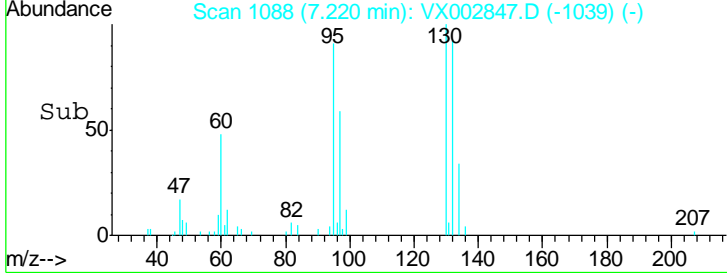
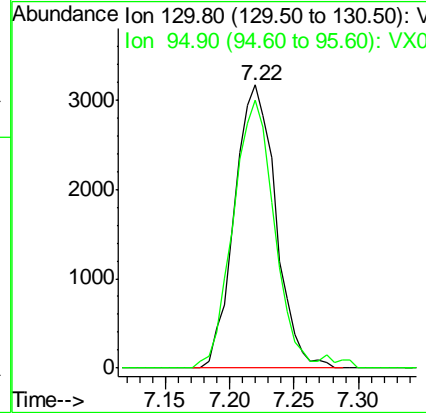
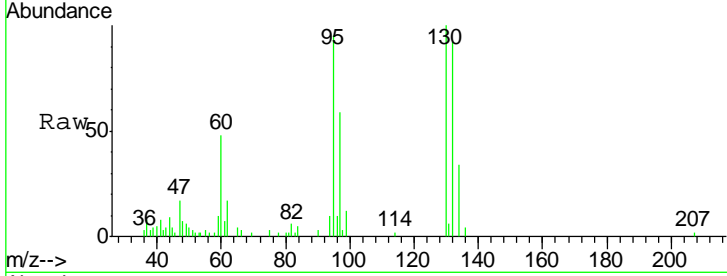




#44
 Trichloroethene
 Concen: 2.37 ug/l
 RT: 7.22 min Scan# 1088
 Delta R.T. 0.00 min
 Lab File: VX002847.D
 Acq: 22 Jun 2018 22:38

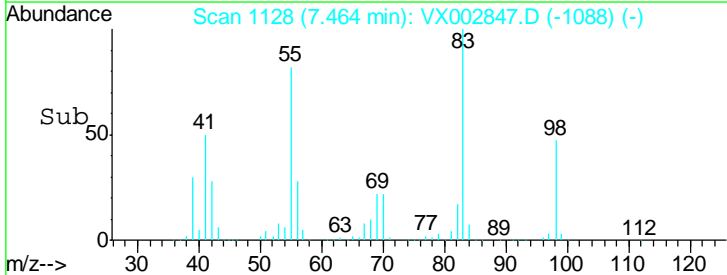
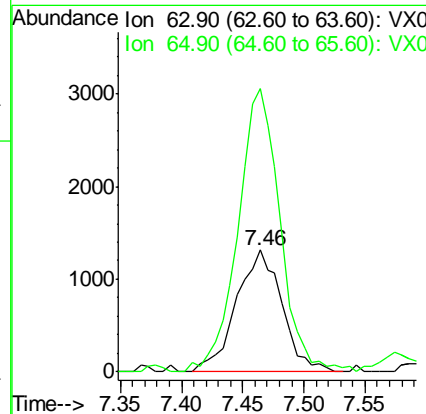
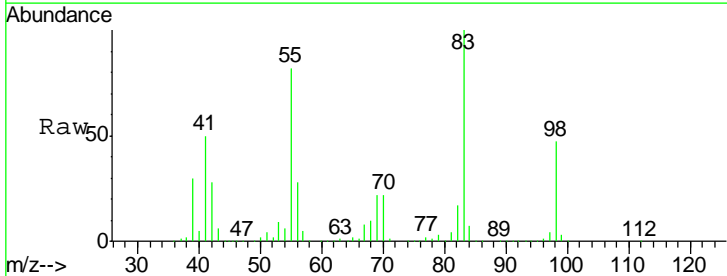
Instrument : MSVOA_X
 ClientSampled : S83-0019

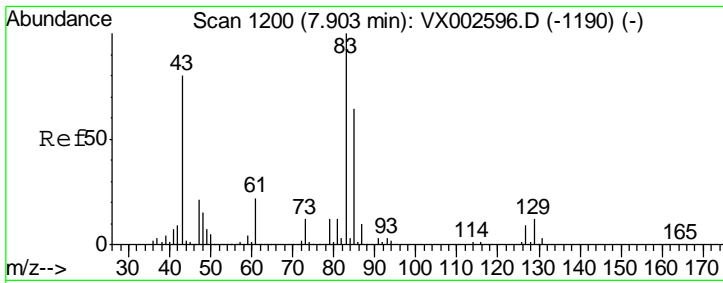
Tgt Ion	Resp	Lower	Upper
130	100		
95	94.6	0.0	185.4



#45
 1,2-Dichloropropane
 Concen: 1.26 ug/l
 RT: 7.46 min Scan# 1128
 Delta R.T. -0.05 min
 Lab File: VX002847.D
 Acq: 22 Jun 2018 22:38

Tgt Ion	Resp	Lower	Upper
63	100		
65	228.4	24.7	37.1#

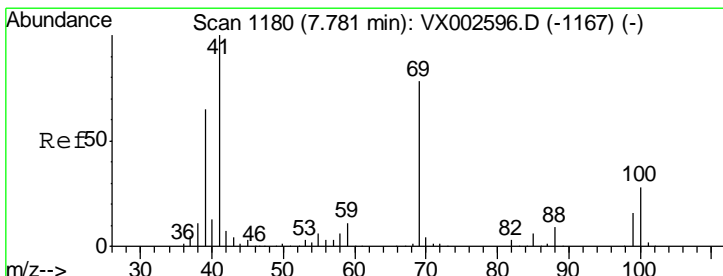
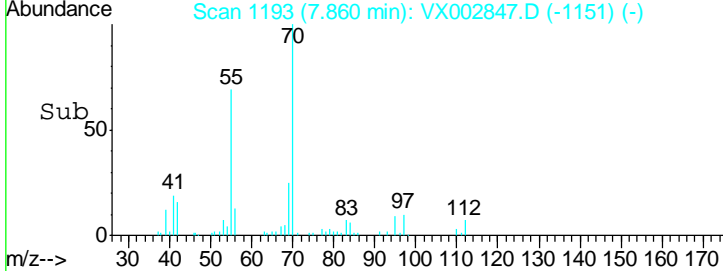
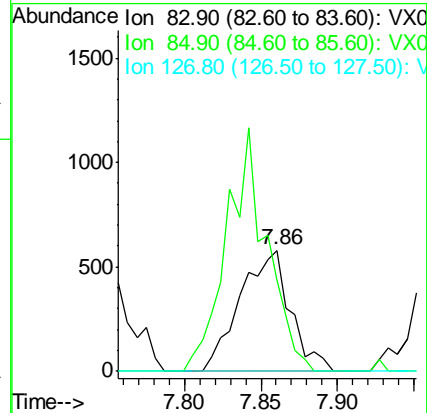
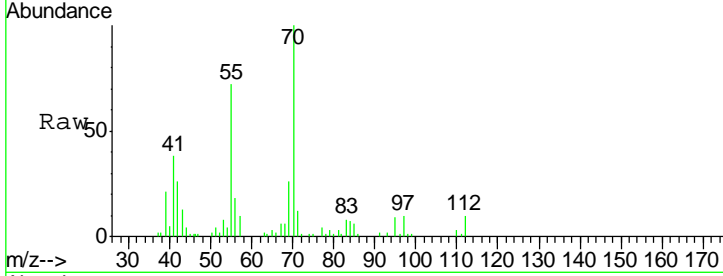




#47
 Bromodichloromethane
 Concen: 0.42 ug/l
 RT: 7.86 min Scan# 1193
 Delta R.T. -0.04 min
 Lab File: VX002847.D
 Acq: 22 Jun 2018 22:38

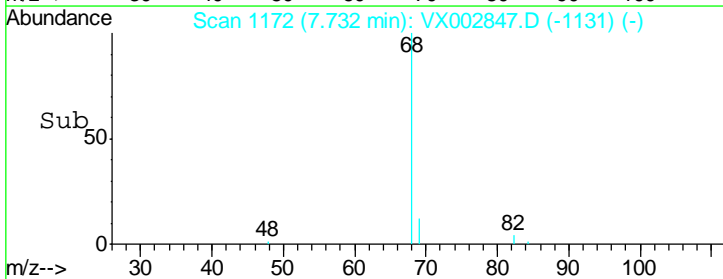
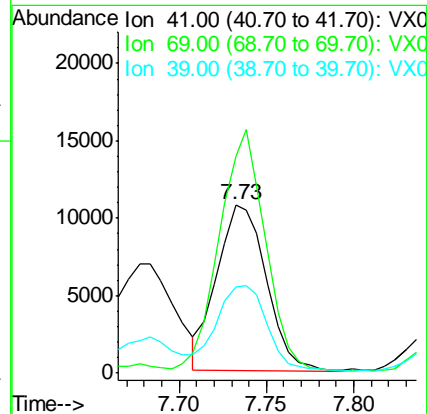
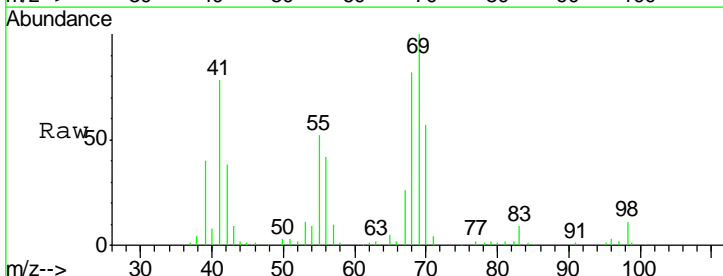
Instrument :
 MSVOA_X
 ClientSampled :
 S83-0019

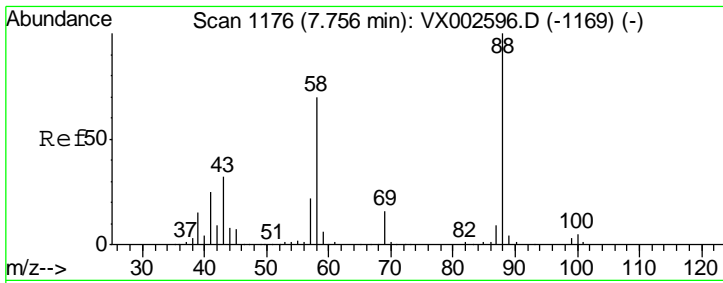
Tgt Ion	Resp	Lower	Upper
83	1328		
83	100		
85	75.6	50.3	75.5#
127	0.0	7.0	10.4#



#48
 Methyl methacrylate
 Concen: 6.39 ug/l
 RT: 7.73 min Scan# 1172
 Delta R.T. -0.05 min
 Lab File: VX002847.D
 Acq: 22 Jun 2018 22:38

Tgt Ion	Resp	Lower	Upper
41	21014		
41	100		
69	137.8	59.1	88.7#
39	54.0	48.9	73.3

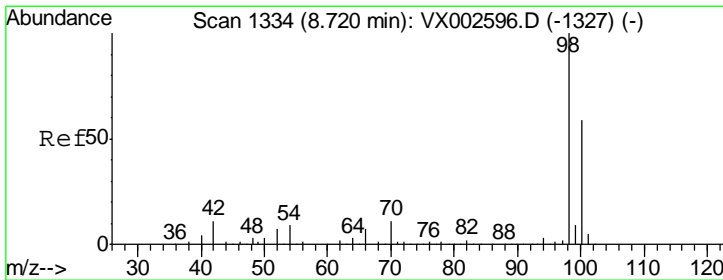
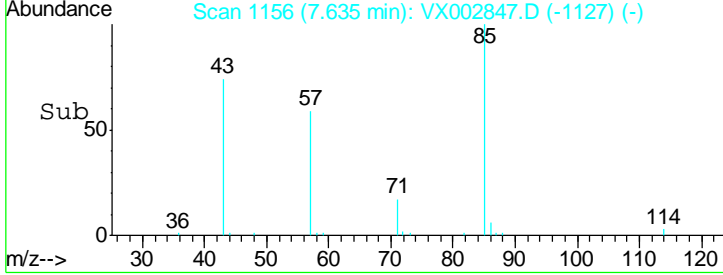
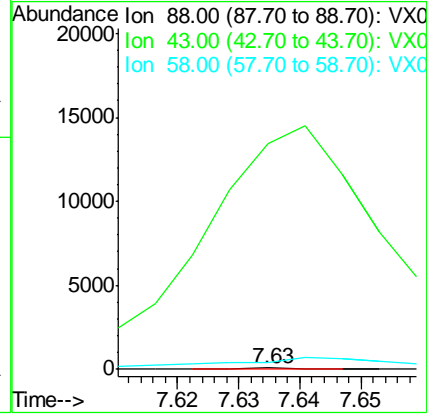
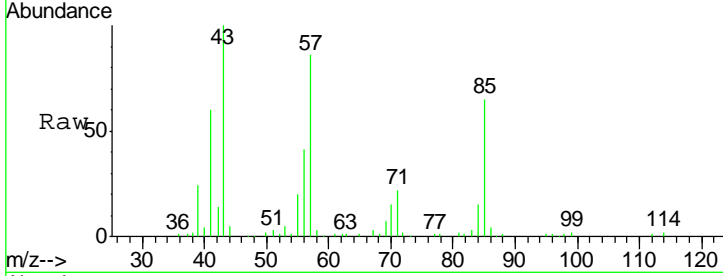




#49
 1,4-Dioxane
 Concen: 0.47 ug/l
 RT: 7.63 min Scan# 1156
 Delta R.T. -0.12 min
 Lab File: VX002847.D
 Acq: 22 Jun 2018 22:38

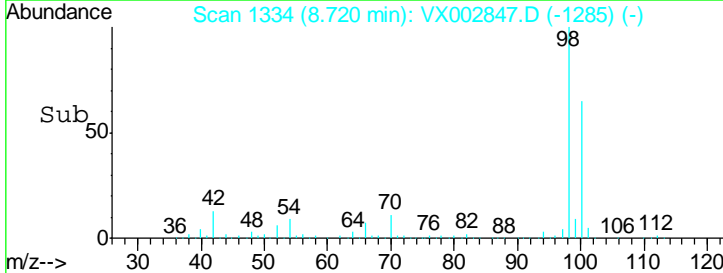
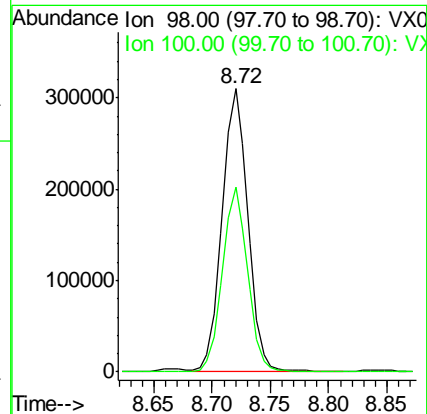
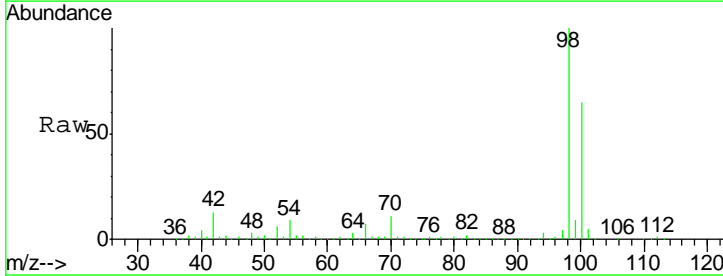
Instrument :
 MSVOA_X
 ClientSampled :
 S83-0019

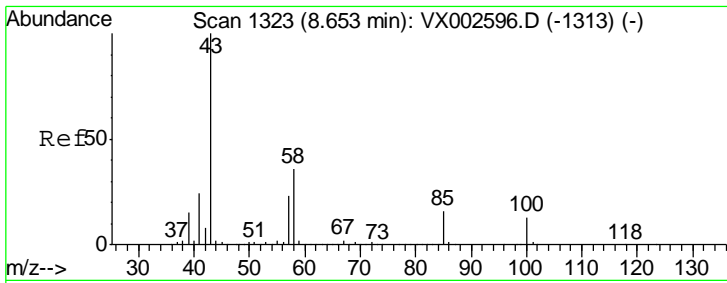
Tgt Ion	Resp	Lower	Upper
88	100		
43	74934.5	29.8	44.6#
58	4724.1	57.1	85.7#



#50
 Toluene-d8
 Concen: 48.00 ug/l
 RT: 8.72 min Scan# 1334
 Delta R.T. 0.00 min
 Lab File: VX002847.D
 Acq: 22 Jun 2018 22:38

Tgt Ion	Resp	Lower	Upper
98	100		
100	64.4	50.9	76.3

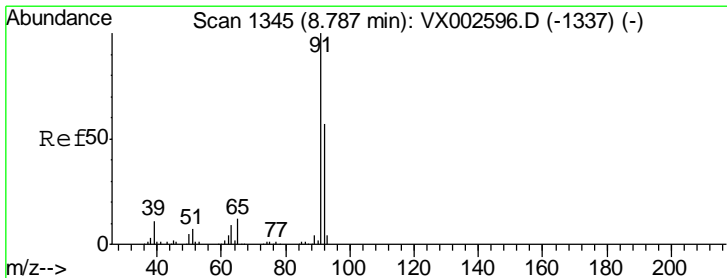
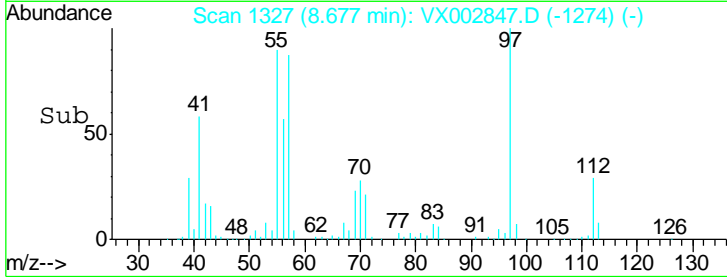
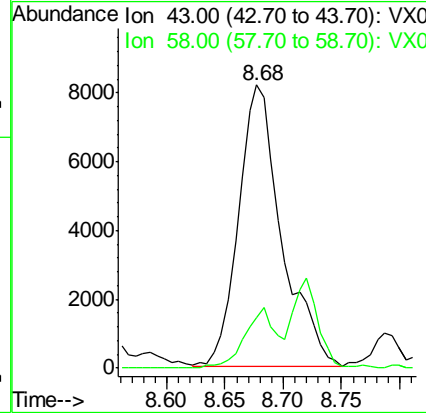
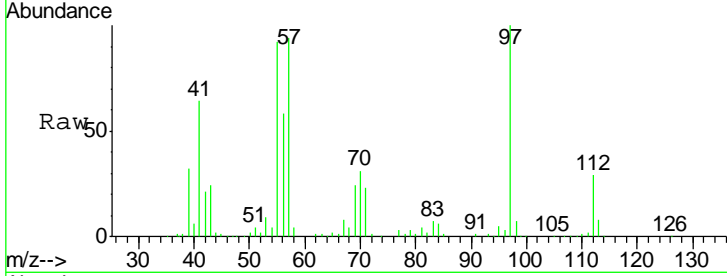




#51
 4-Methyl-2-Pentanone
 Concen: 5.07 ug/l
 RT: 8.68 min Scan# 1327
 Delta R.T. 0.02 min
 Lab File: VX002847.D
 Acq: 22 Jun 2018 22:38

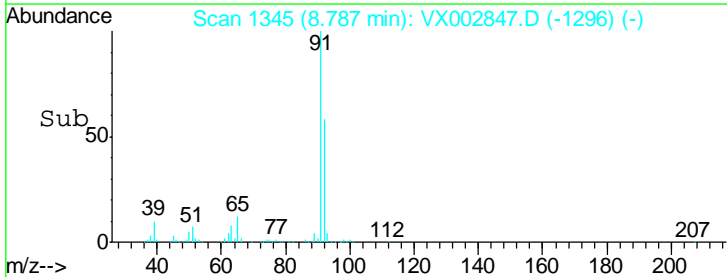
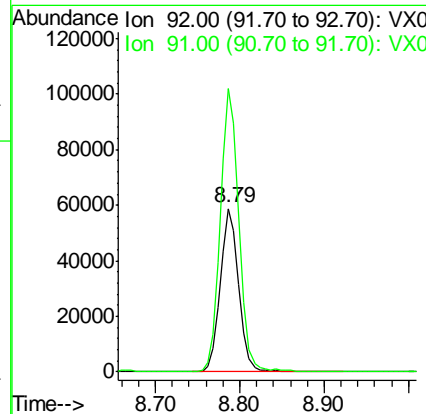
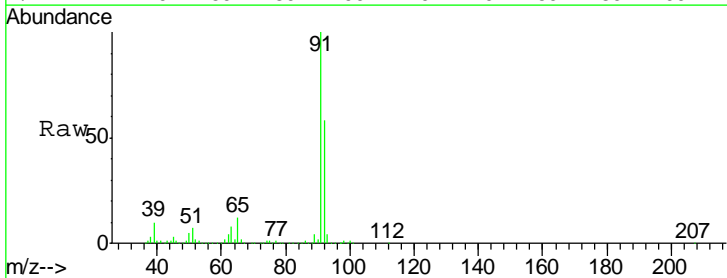
Instrument :
 MSVOA_X
 ClientSampled :
 S83-0019

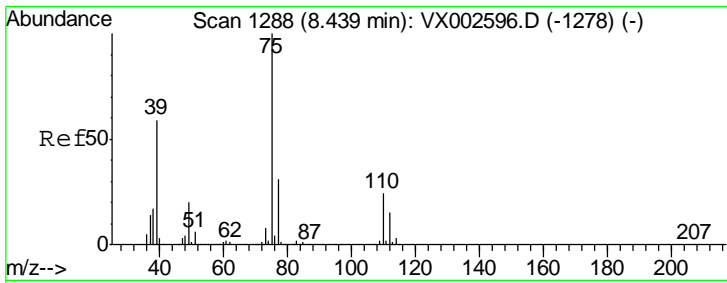
Tgt Ion: 43 Resp: 20953
 Ion Ratio Lower Upper
 43 100
 58 16.2 28.6 42.8#



#52
 Toluene
 Concen: 13.57 ug/l
 RT: 8.79 min Scan# 1345
 Delta R.T. 0.00 min
 Lab File: VX002847.D
 Acq: 22 Jun 2018 22:38

Tgt Ion: 92 Resp: 89062
 Ion Ratio Lower Upper
 92 100
 91 174.9 140.4 210.6

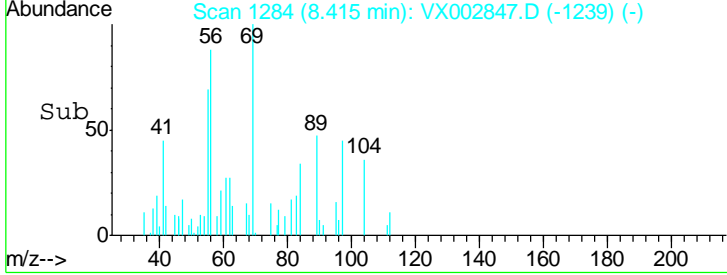
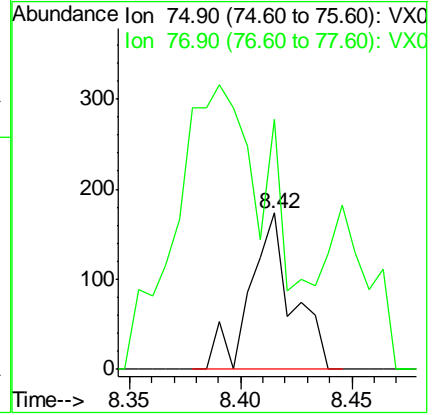
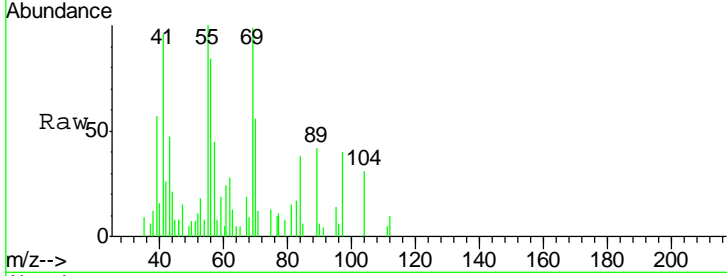




#53
 t-1,3-Dichloropropene
 Concen: 2.45 ug/l
 RT: 8.42 min Scan# 1284
 Delta R.T. -0.02 min
 Lab File: VX002847.D
 Acq: 22 Jun 2018 22:38

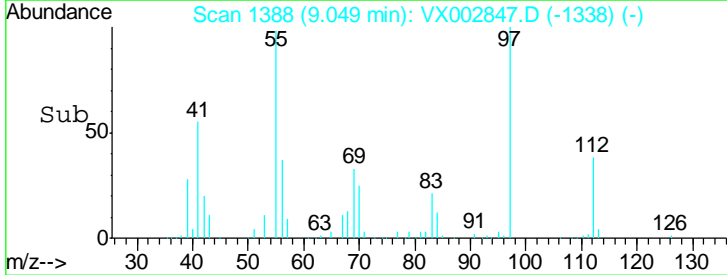
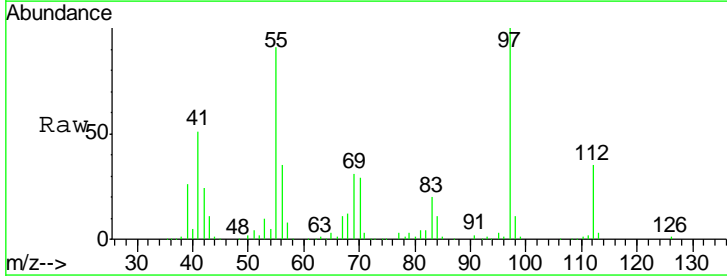
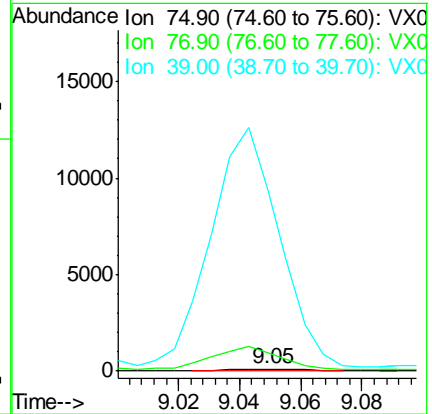
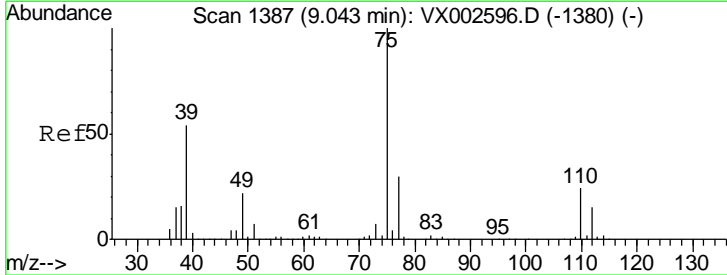
Instrument :
 MSVOA_X
ClientSampled :
 S83-0019

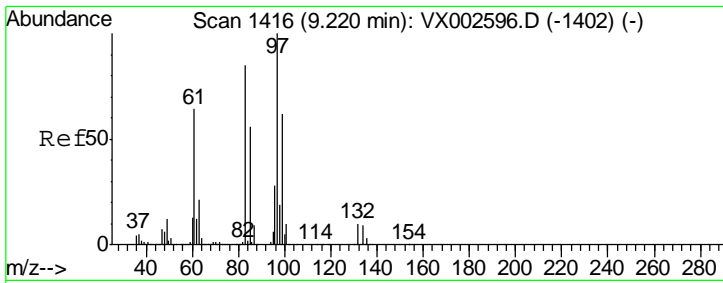
Tgt Ion: 75 Resp: 229
 Ion Ratio Lower Upper
 75 100
 77 55.5 25.4 38.2#



#54
 cis-1,3-Dichloropropene
 Concen: 3.25 ug/l
 RT: 9.05 min Scan# 1388
 Delta R.T. 0.01 min
 Lab File: VX002847.D
 Acq: 22 Jun 2018 22:38

Tgt Ion: 75 Resp: 141
 Ion Ratio Lower Upper
 75 100
 77 768.4 24.8 37.2#
 39 7969.3 42.4 63.6#

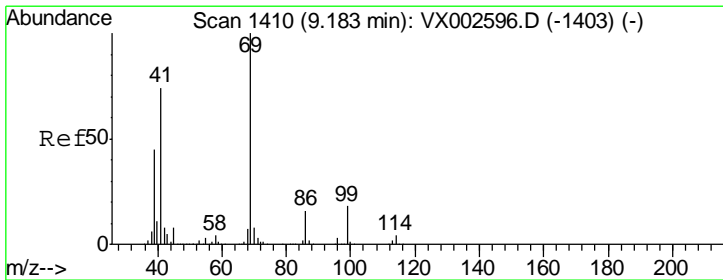
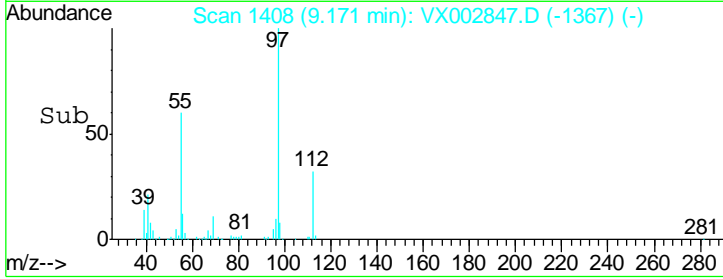
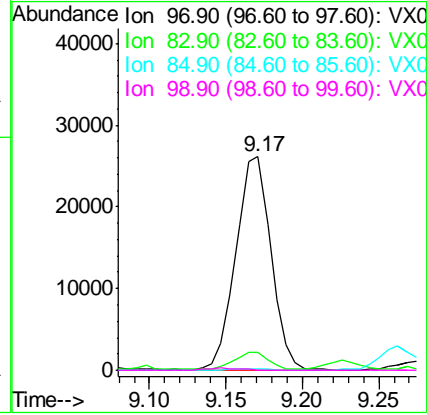
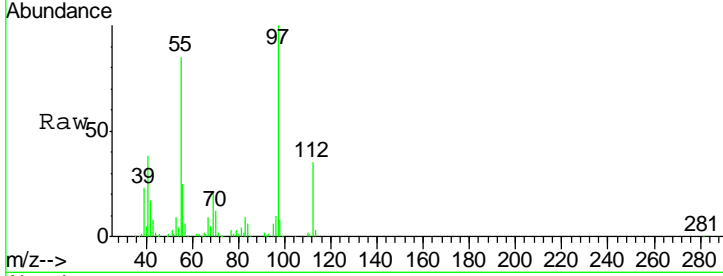




#55
 1,1,2-Trichloroethane
 Concen: 15.77 ug/l
 RT: 9.17 min Scan# 1408
 Delta R.T. -0.05 min
 Lab File: VX002847.D
 Acq: 22 Jun 2018 22:38

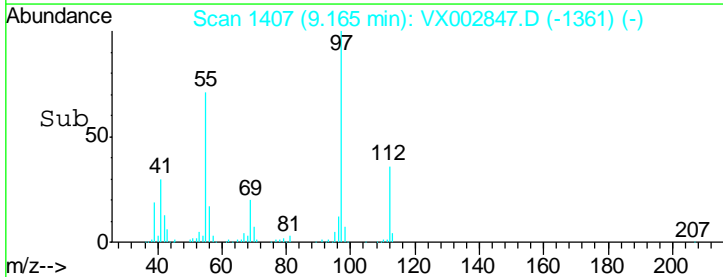
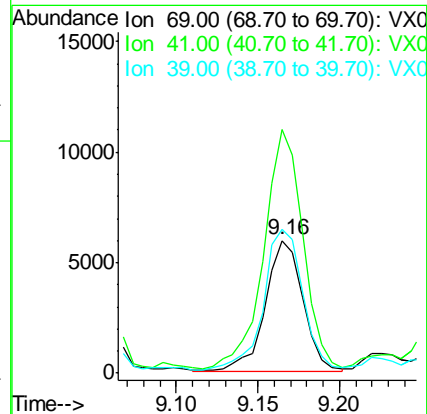
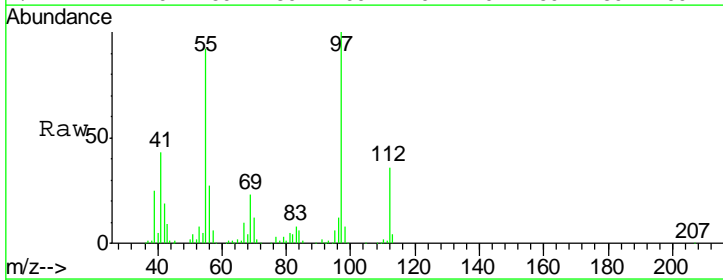
Instrument :
 MSVOA_X
 ClientSampled :
 S83-0019

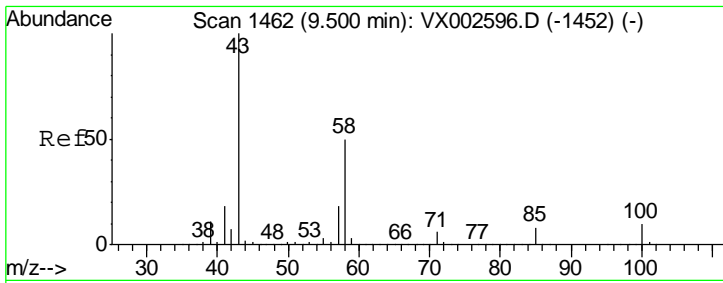
Tgt Ion	Resp	Lower	Upper
97	41825		
83	8.0	70.2	105.2#
85	0.3	44.9	67.3#
99	0.3	49.8	74.8#



#56
 Ethyl methacrylate
 Concen: 2.32 ug/l
 RT: 9.16 min Scan# 1407
 Delta R.T. -0.02 min
 Lab File: VX002847.D
 Acq: 22 Jun 2018 22:38

Tgt Ion	Resp	Lower	Upper
69	9479		
41	189.1	60.3	90.5#
39	112.5	35.8	53.8#

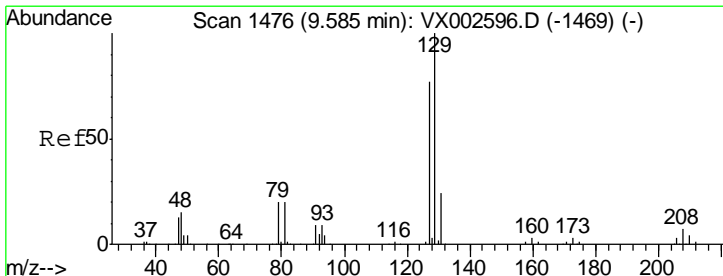
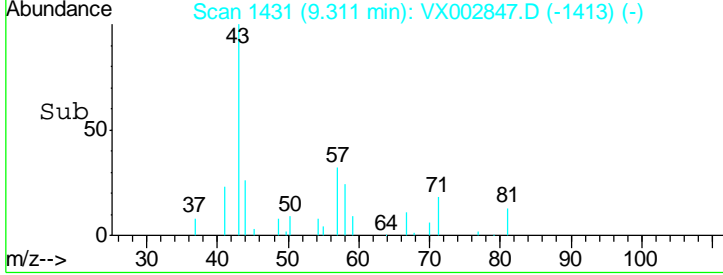
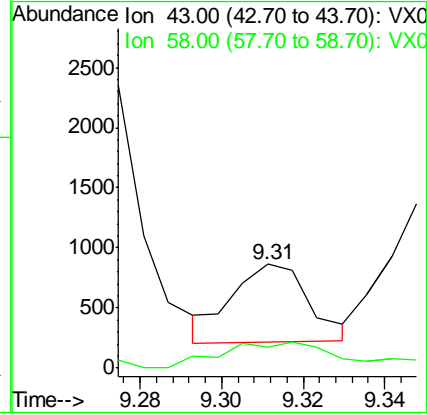
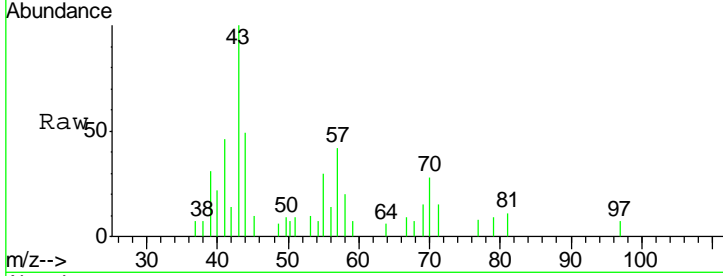




#59
 2-Hexanone
 Concen: 0.27 ug/l
 RT: 9.31 min Scan# 1431
 Delta R.T. -0.19 min
 Lab File: VX002847.D
 Acq: 22 Jun 2018 22:38

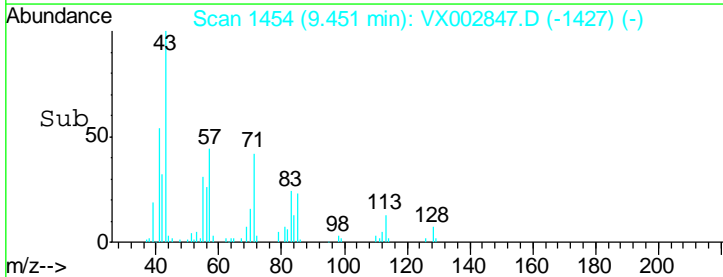
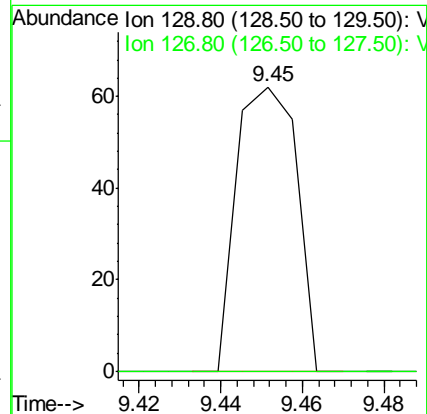
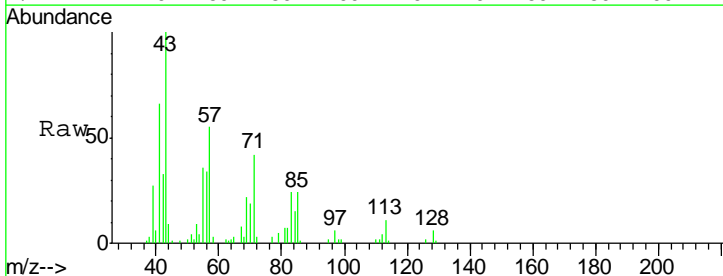
Instrument :
 MSVOA_X
 ClientSampled :
 S83-0019

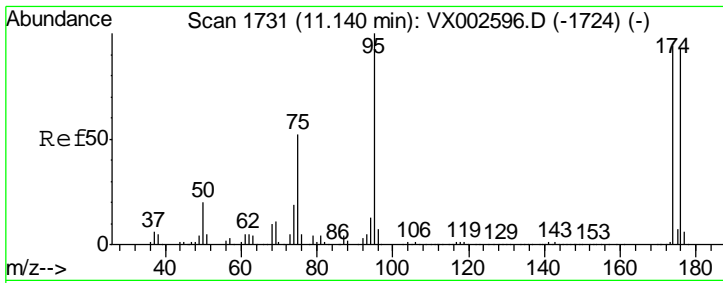
Tot Ion: 43 Resp: 846
 Ion Ratio Lower Upper
 43 100
 58 47.6 24.6 73.6



#60
 Dibromochloromethane
 Concen: 3.78 ug/l
 RT: 9.45 min Scan# 1454
 Delta R.T. -0.13 min
 Lab File: VX002847.D
 Acq: 22 Jun 2018 22:38

Tgt Ion: 129 Resp: 64
 Ion Ratio Lower Upper
 129 100
 127 0.0 38.5 115.3#



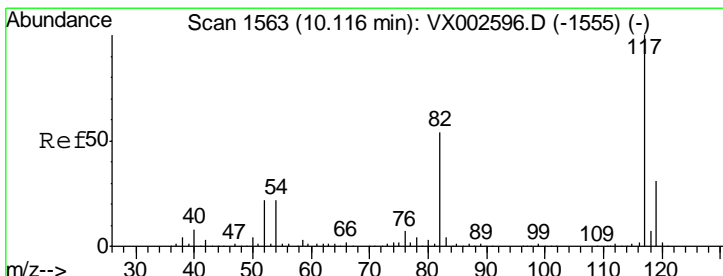
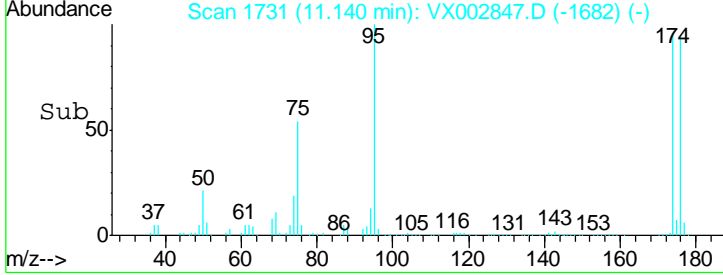
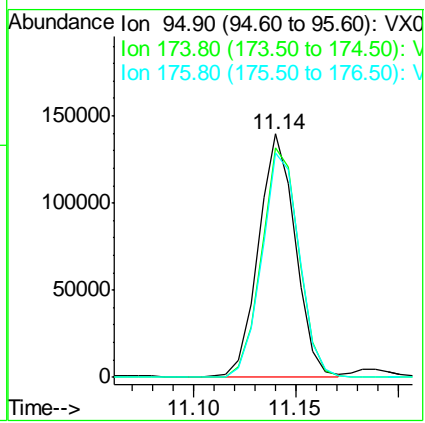
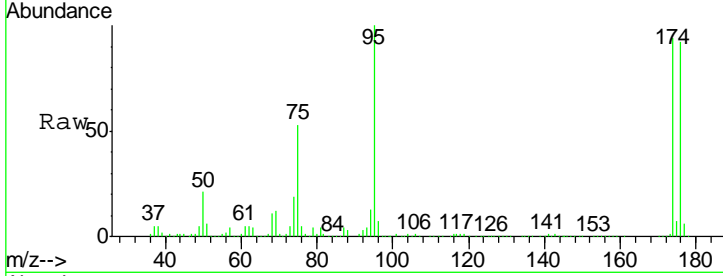


#62
 4-Bromofluorobenzene
 Concen: 47.14 ug/l
 RT: 11.14 min Scan# 1731
 Delta R.T. 0.00 min
 Lab File: VX002847.D
 Acq: 22 Jun 2018 22:38

Instrument : MSVOA_X
 ClientSampled : S83-0019

Tot Ion: 95 Resp: 174861

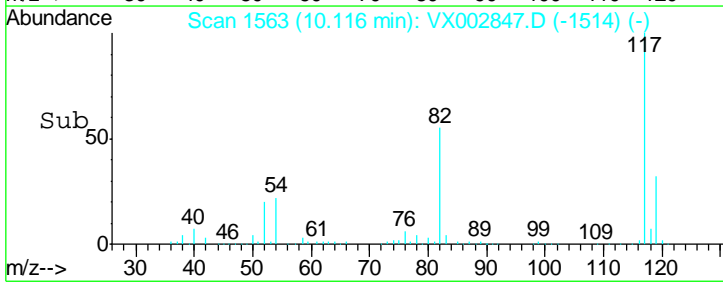
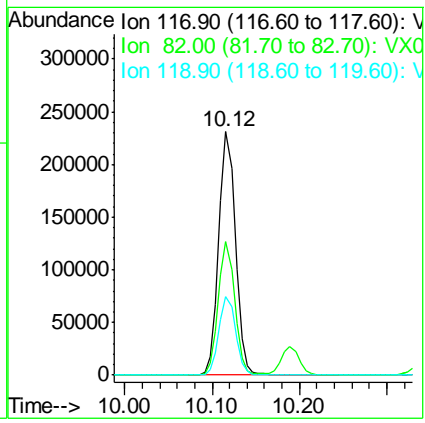
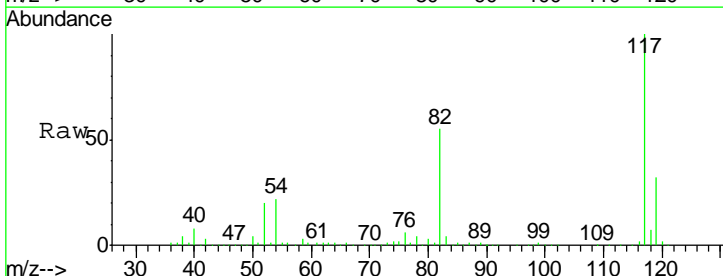
Ion	Ratio	Lower	Upper
95	100		
174	96.1	0.0	187.4
176	94.2	0.0	181.0

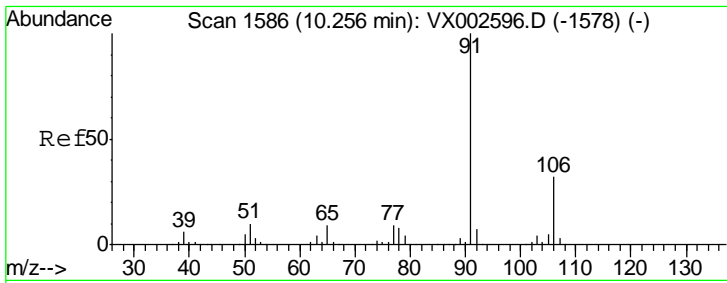


#63
 Chlorobenzene-d5
 Concen: 50.00 ug/l
 RT: 10.12 min Scan# 1563
 Delta R.T. 0.00 min
 Lab File: VX002847.D
 Acq: 22 Jun 2018 22:38

Tgt Ion: 117 Resp: 305392

Ion	Ratio	Lower	Upper
117	100		
82	54.7	45.0	67.4
119	32.4	25.8	38.6

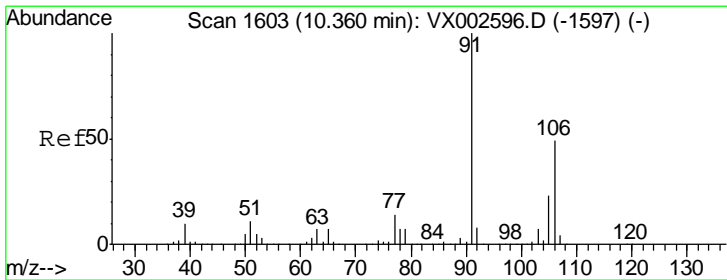
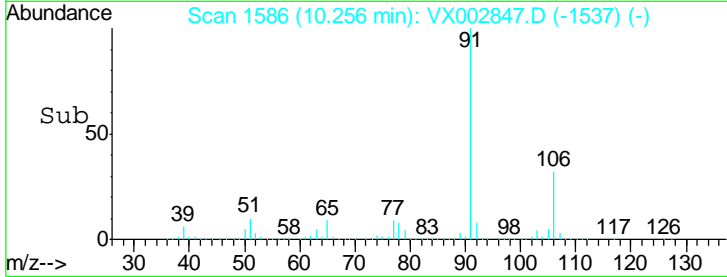
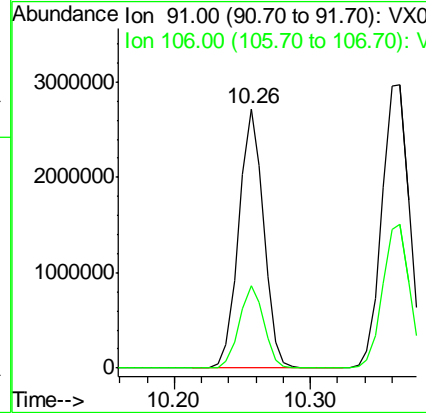
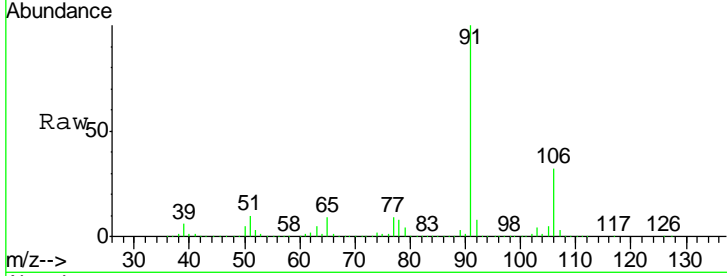




#67
 Ethyl Benzene
 Concen: 272.47 ug/l
 RT: 10.26 min Scan# 1586
 Delta R.T. 0.00 min
 Lab File: VX002847.D
 Acq: 22 Jun 2018 22:38

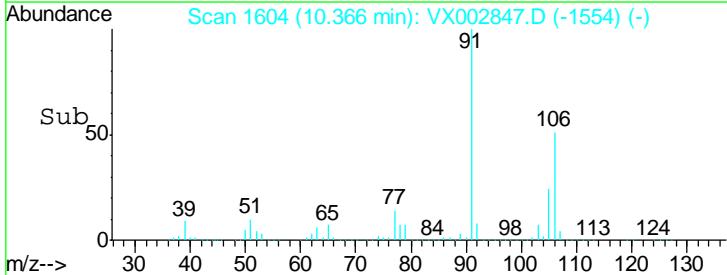
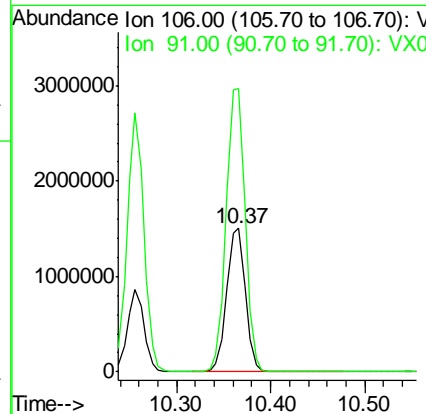
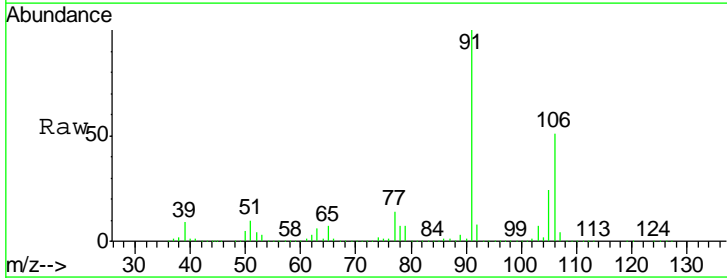
Instrument : MSVOA_X
 ClientSampled : S83-0019

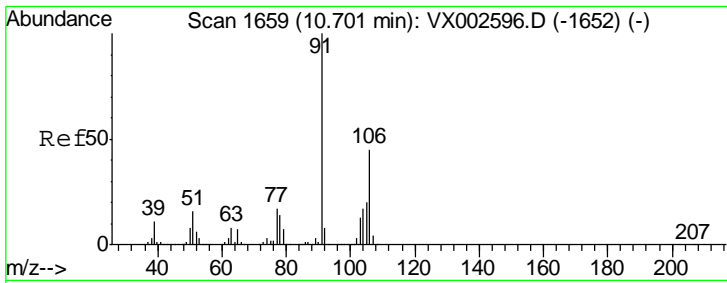
Tgt Ion: 91 Resp: 3446743
 Ion Ratio Lower Upper
 91 100
 106 31.7 25.5 38.3



#68
 m/p-Xylenes
 Concen: 423.16 ug/l
 RT: 10.37 min Scan# 1604
 Delta R.T. 0.01 min
 Lab File: VX002847.D
 Acq: 22 Jun 2018 22:38

Tgt Ion: 106 Resp: 2064890
 Ion Ratio Lower Upper
 106 100
 91 201.4 163.4 245.2

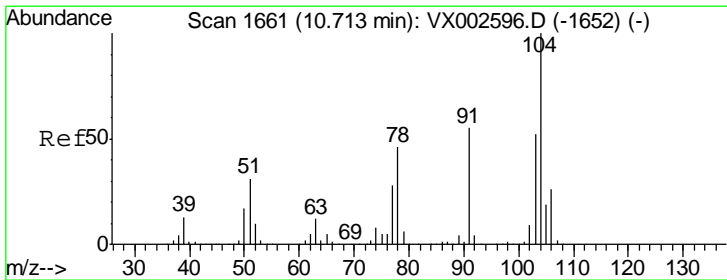
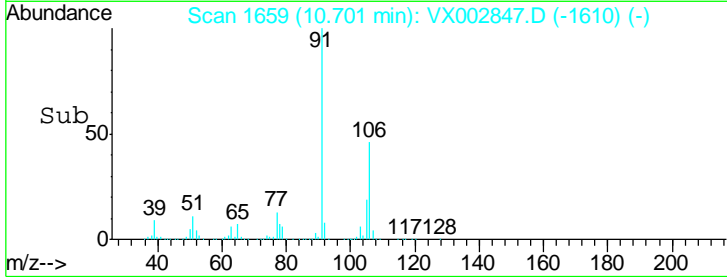
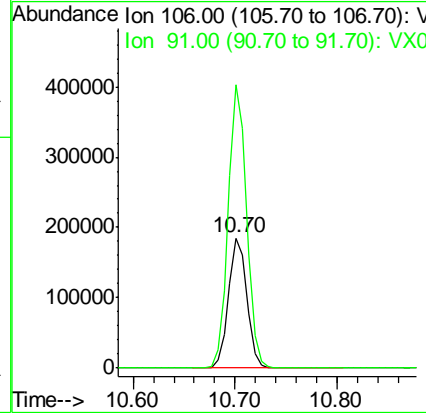
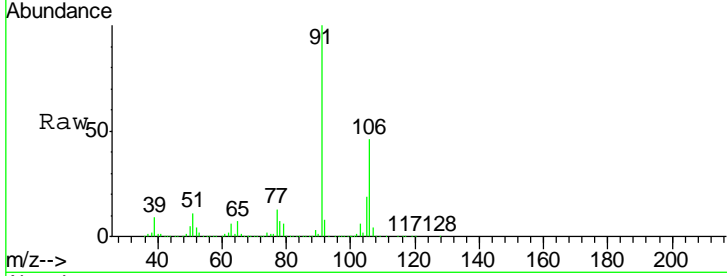




#69
 o-Xylene
 Concen: 48.28 ug/l
 RT: 10.70 min Scan# 1659
 Delta R.T. 0.00 min
 Lab File: VX002847.D
 Acq: 22 Jun 2018 22:38

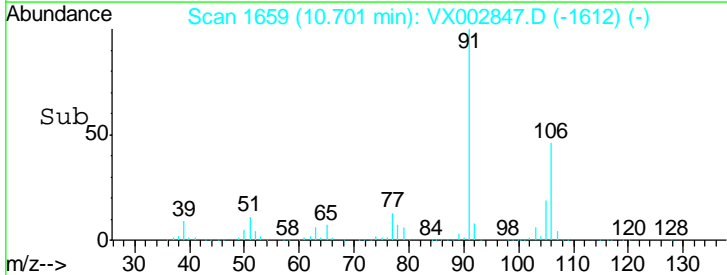
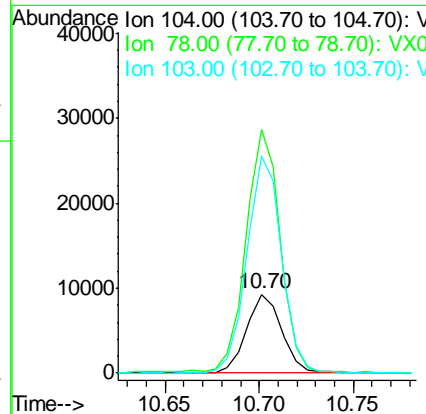
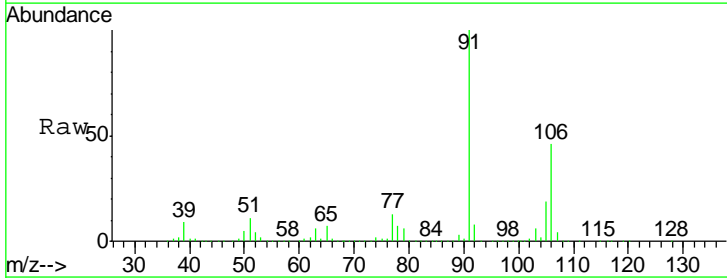
Instrument :
 MSVOA_X
 ClientSampled :
 S83-0019

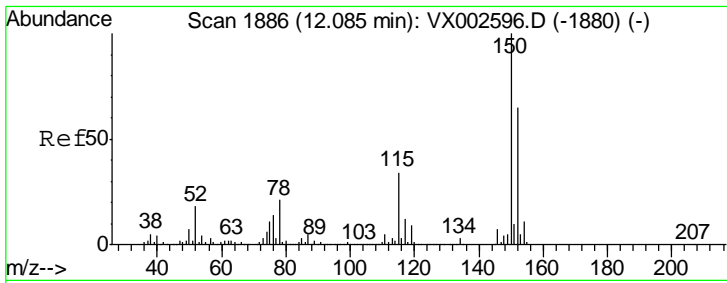
Tgt Ion:106 Resp: 231492
 Ion Ratio Lower Upper
 106 100
 91 217.9 108.2 324.6



#70
 Styrene
 Concen: 1.54 ug/l
 RT: 10.70 min Scan# 1659
 Delta R.T. -0.01 min
 Lab File: VX002847.D
 Acq: 22 Jun 2018 22:38

Tgt Ion:104 Resp: 12150
 Ion Ratio Lower Upper
 104 100
 78 304.5 41.0 61.6#
 103 267.7 44.2 66.4#

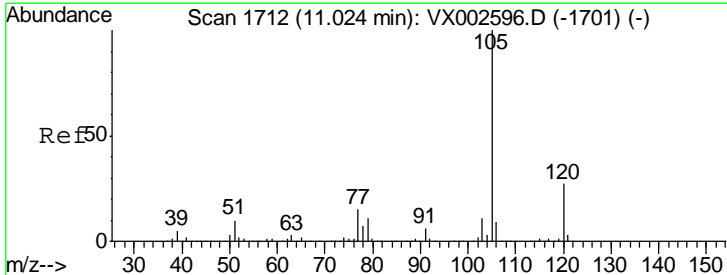
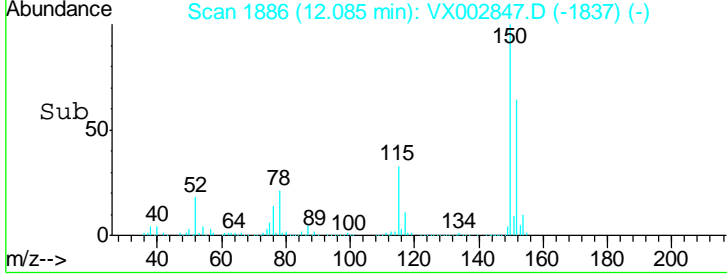
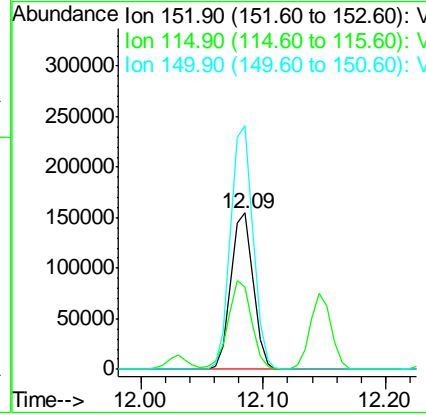
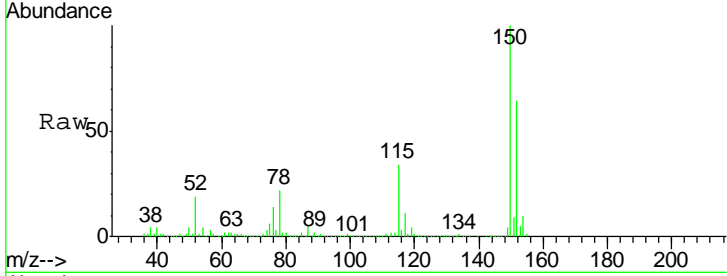




#72
 1,4-Dichlorobenzene-d4
 Concen: 50.00 ug/l
 RT: 12.09 min Scan# 1886
 Delta R.T. 0.00 min
 Lab File: VX002847.D
 Acq: 22 Jun 2018 22:38

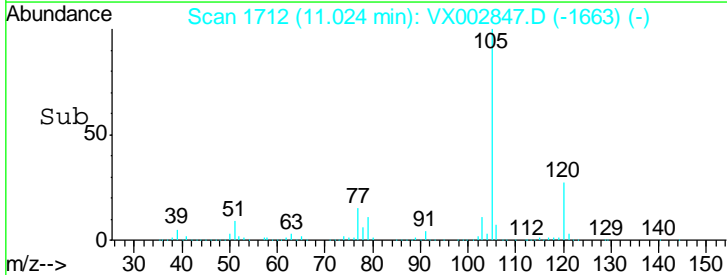
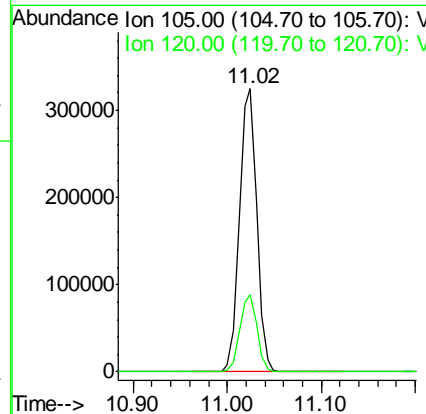
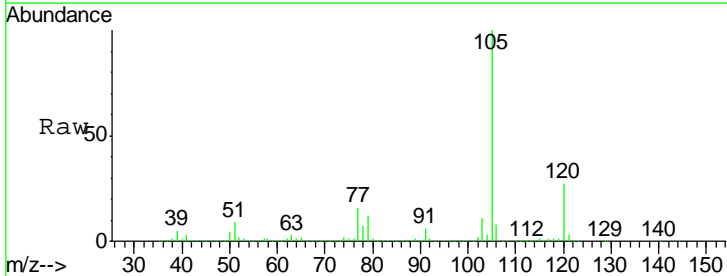
Instrument :
 MSVOA_X
 ClientSampled :
 S83-0019

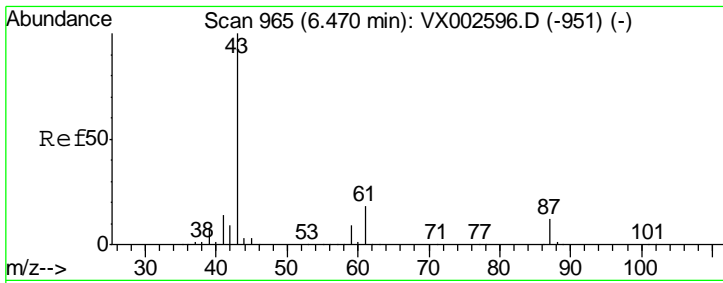
Tgt Ion	Resp	Lower	Upper
152	100		
115	59.2	40.1	120.2
150	156.6	0.0	347.2



#73
 Isopropylbenzene
 Concen: 31.55 ug/l
 RT: 11.02 min Scan# 1712
 Delta R.T. 0.00 min
 Lab File: VX002847.D
 Acq: 22 Jun 2018 22:38

Tgt Ion	Resp	Lower	Upper
105	100		
120	26.9	13.5	40.4

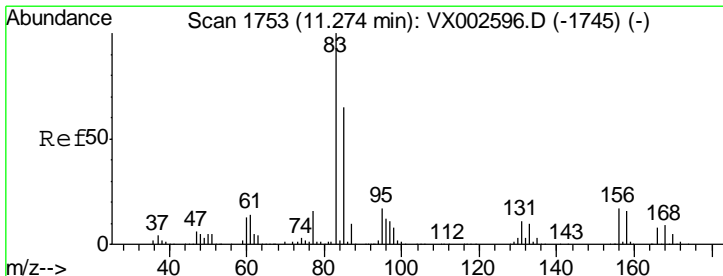
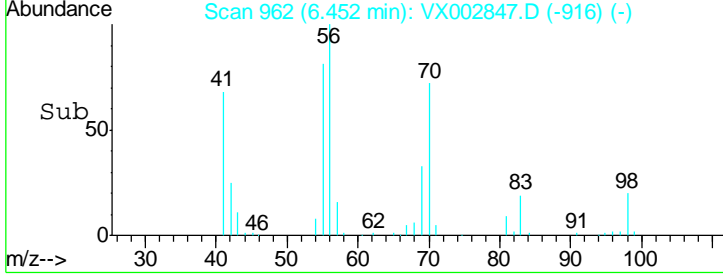
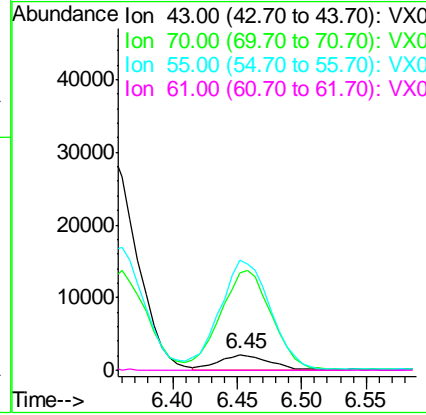
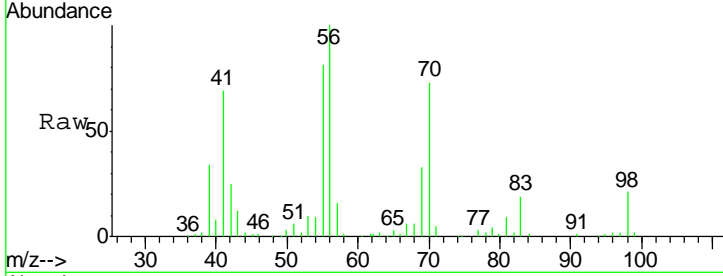




#74
 N-amyl acetate
 Concen: 0.84 ug/l
 RT: 6.45 min Scan# 962
 Delta R.T. -0.02 min
 Lab File: VX002847.D
 Acq: 22 Jun 2018 22:38

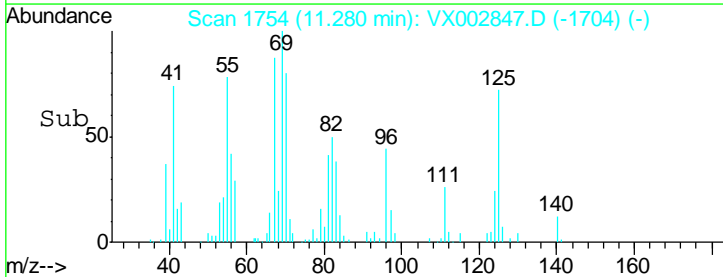
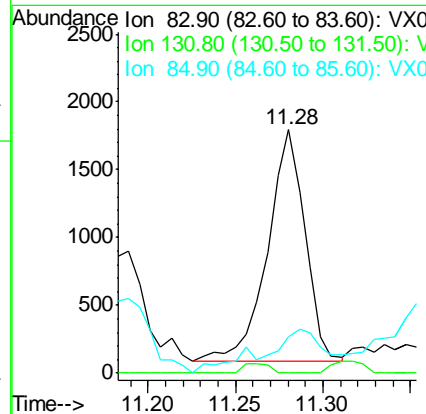
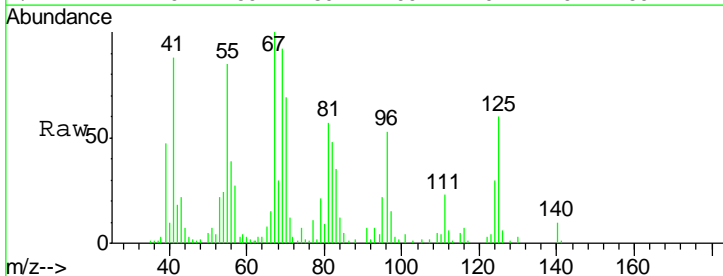
Instrument :
 MSVOA_X
ClientSampled :
 S83-0019

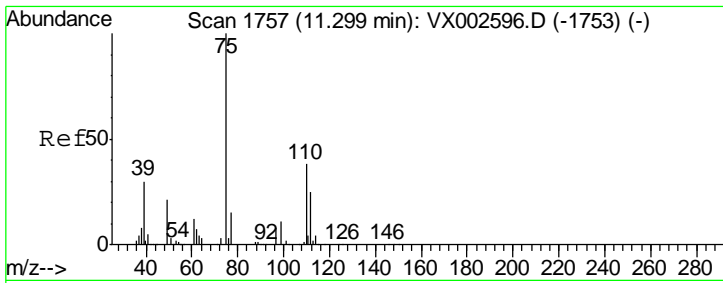
Tgt Ion	Resp	Lower	Upper
43	5439		
70	697.6	0.0	0.0#
55	754.0	0.0	0.0#
61	0.0	14.4	21.6#



#75
 1,1,2,2-Tetrachloroethane
 Concen: 0.66 ug/l
 RT: 11.28 min Scan# 1754
 Delta R.T. 0.01 min
 Lab File: VX002847.D
 Acq: 22 Jun 2018 22:38

Tgt Ion	Resp	Lower	Upper
83	2565		
83	100		
131	0.0	5.6	16.8#
85	11.8	32.4	97.2#

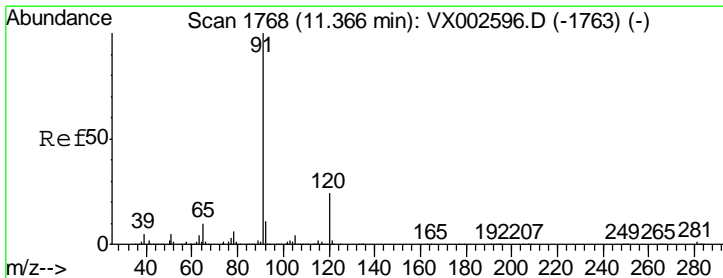
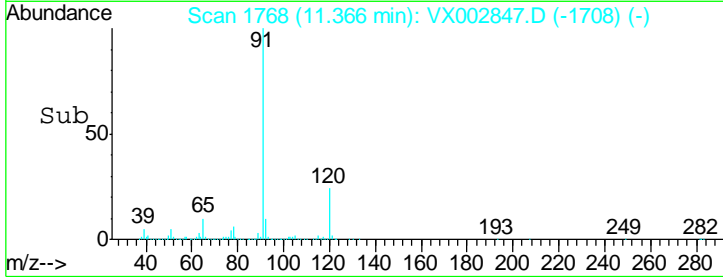
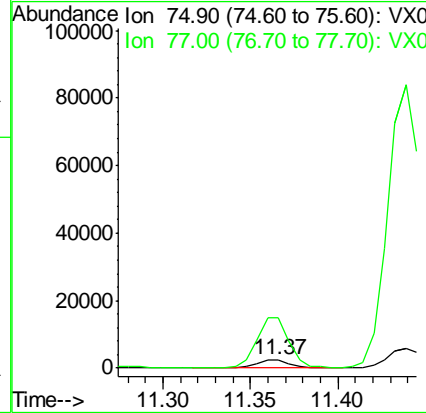
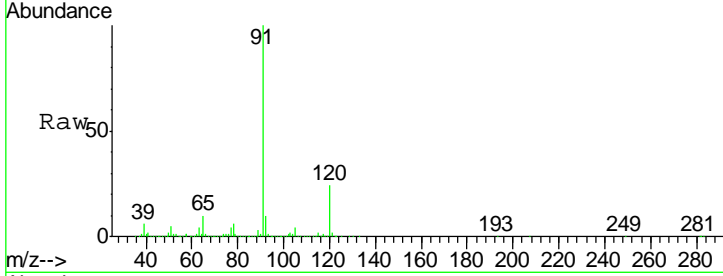




#76
 1,2,3-Trichloropropane
 Concen: 0.93 ug/l
 RT: 11.37 min Scan# 1768
 Delta R.T. 0.07 min
 Lab File: VX002847.D
 Acq: 22 Jun 2018 22:38

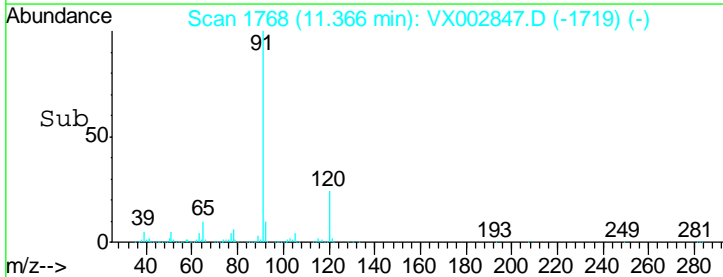
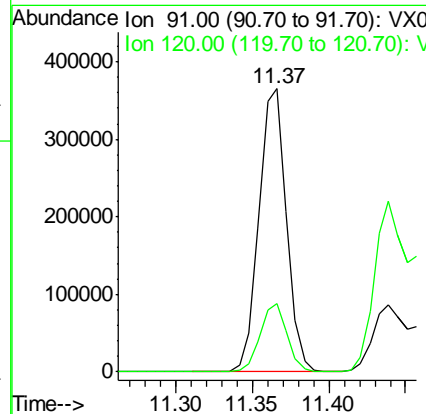
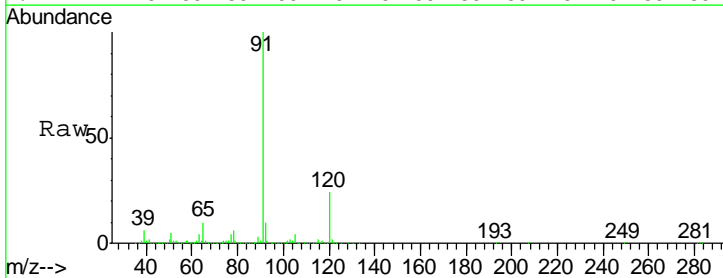
Instrument :
 MSVOA_X
 ClientSampled :
 S83-0019

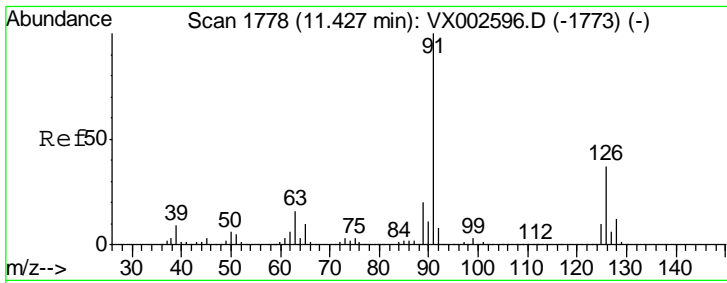
Tgt Ion: 75 Resp: 3438
 Ion Ratio Lower Upper
 75 100
 77 555.3 22.8 68.3#



#78
 n-propylbenzene
 Concen: 30.48 ug/l
 RT: 11.37 min Scan# 1768
 Delta R.T. 0.00 min
 Lab File: VX002847.D
 Acq: 22 Jun 2018 22:38

Tgt Ion: 91 Resp: 456574
 Ion Ratio Lower Upper
 91 100
 120 23.5 11.8 35.4

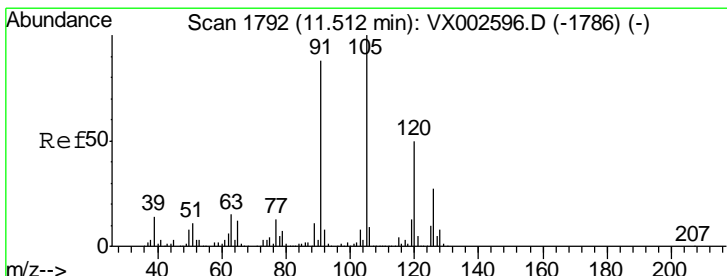
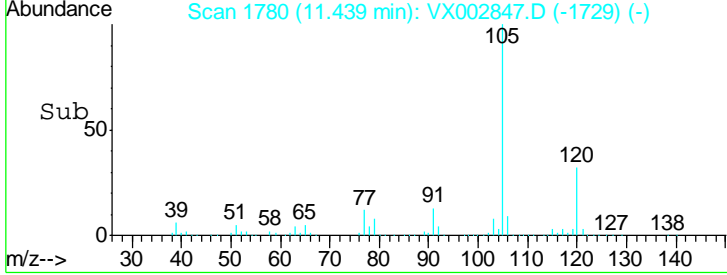
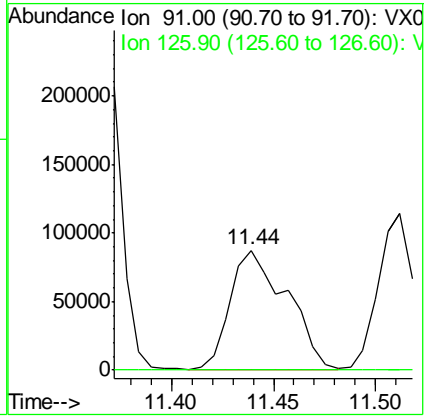
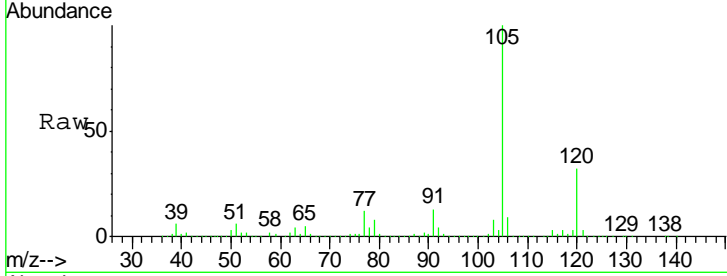




#79
 2-Chlorotoluene
 Concen: 18.85 ug/l
 RT: 11.44 min Scan# 1780
 Delta R.T. 0.01 min
 Lab File: VX002847.D
 Acq: 22 Jun 2018 22:38

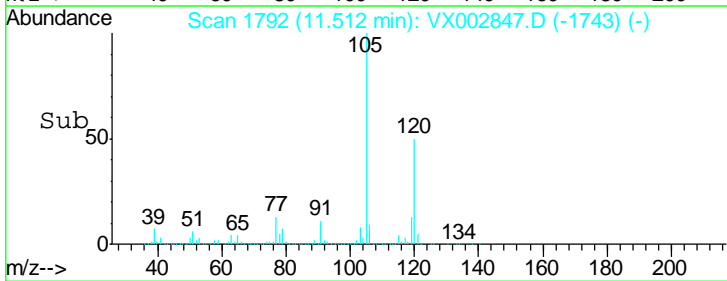
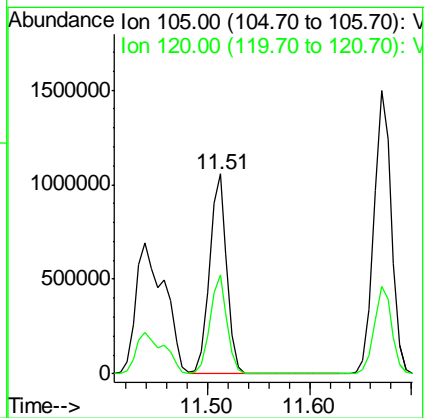
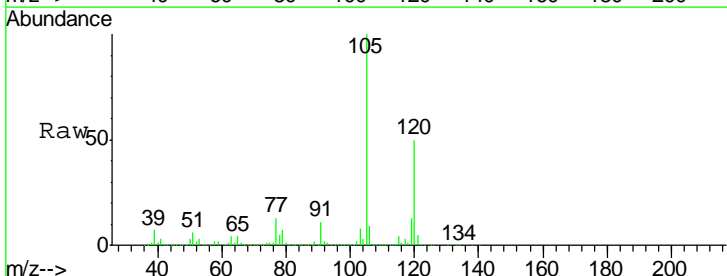
Instrument : MSVOA_X
 Client Sampled : S83-0019

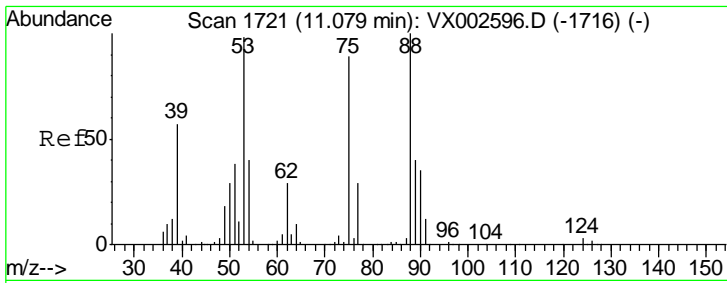
Tgt Ion: 91 Resp: 168550
 Ion Ratio Lower Upper
 91 100
 126 0.1 17.7 53.1#



#80
 1,3,5-Trimethylbenzene
 Concen: 112.91 ug/l
 RT: 11.51 min Scan# 1792
 Delta R.T. 0.00 min
 Lab File: VX002847.D
 Acq: 22 Jun 2018 22:38

Tgt Ion: 105 Resp: 1246403
 Ion Ratio Lower Upper
 105 100
 120 48.9 24.4 73.4

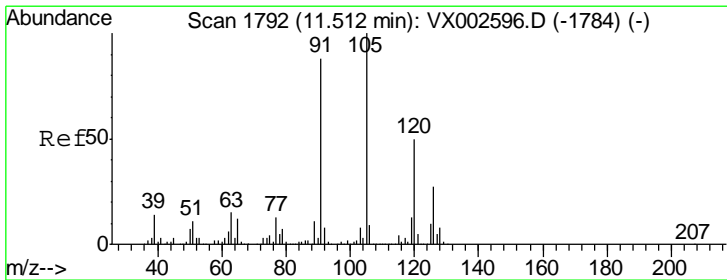
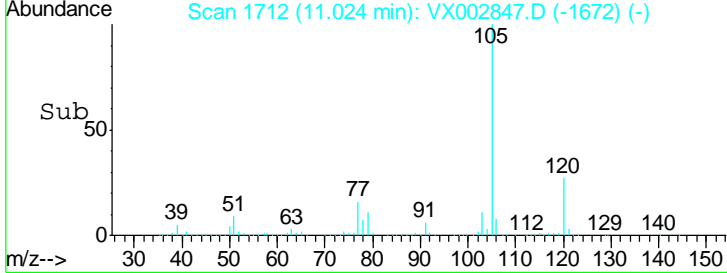
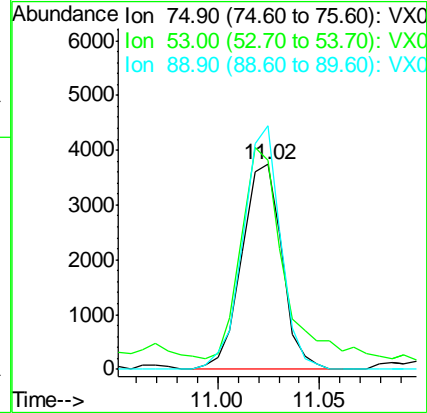
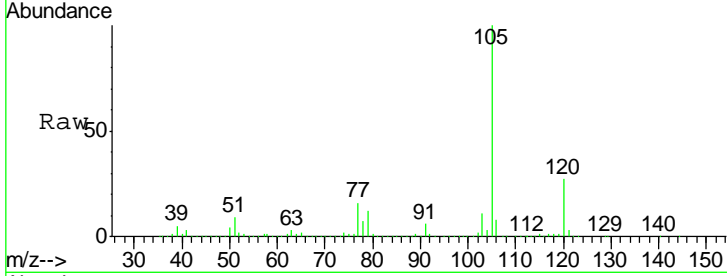




#81
 trans-1,4-Dichloro-2-butene
 Concen: 8.24 ug/l
 RT: 11.02 min Scan# 1712
 Delta R.T. -0.05 min
 Lab File: VX002847.D
 Acq: 22 Jun 2018 22:38

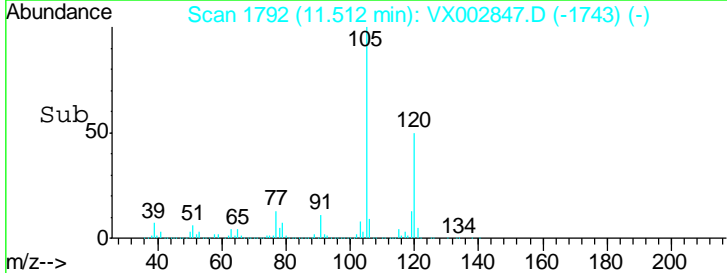
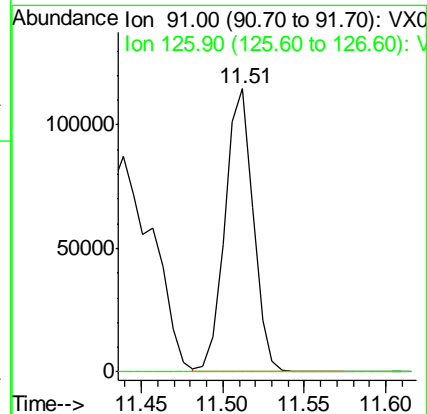
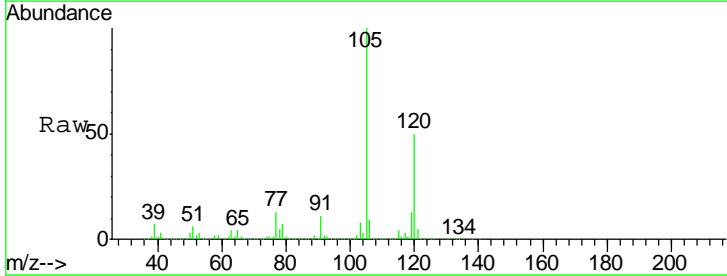
Instrument :
 MSVOA_X
 ClientSampled :
 S83-0019

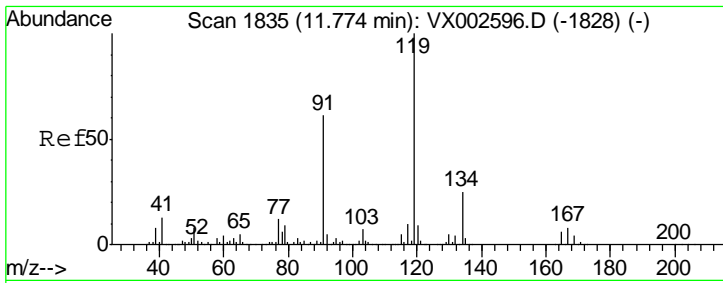
Tgt Ion	Resp	Lower	Upper
75	5103		
75	100		
53	114.6	86.8	130.2
89	111.8	38.2	57.2#



#82
 4-Chlorotoluene
 Concen: 13.03 ug/l
 RT: 11.51 min Scan# 1792
 Delta R.T. 0.00 min
 Lab File: VX002847.D
 Acq: 22 Jun 2018 22:38

Tgt Ion	Resp	Lower	Upper
91	137521		
91	100		
126	0.1	15.4	46.4#

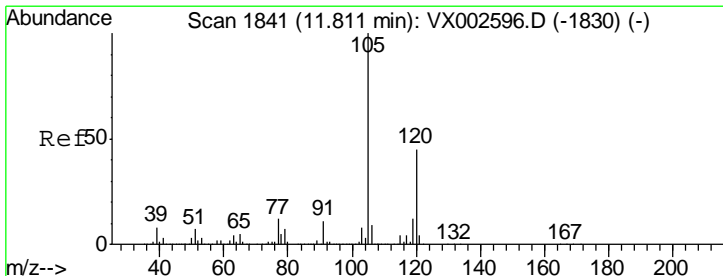
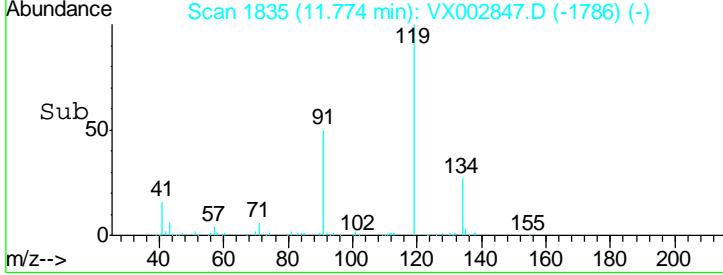
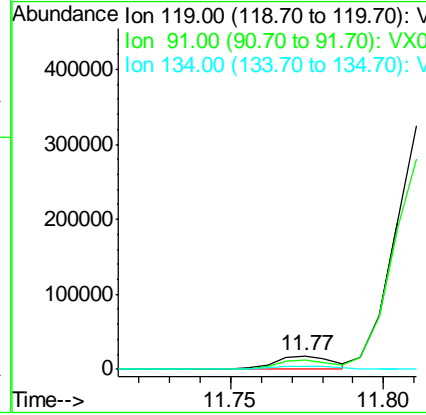
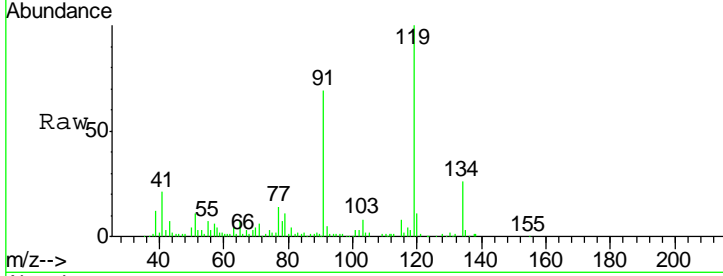




#83
 tert-Butylbenzene
 Concen: 2.19 ug/l
 RT: 11.77 min Scan# 1835
 Delta R.T. 0.00 min
 Lab File: VX002847.D
 Acq: 22 Jun 2018 22:38

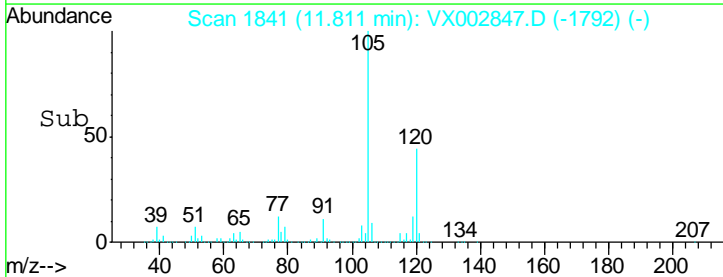
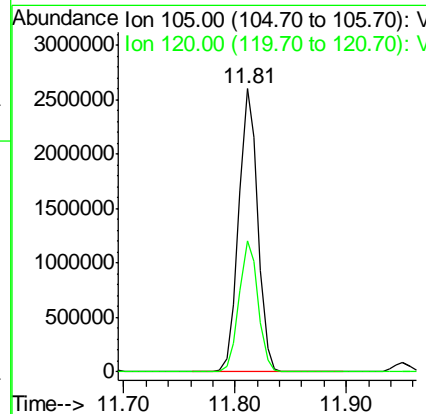
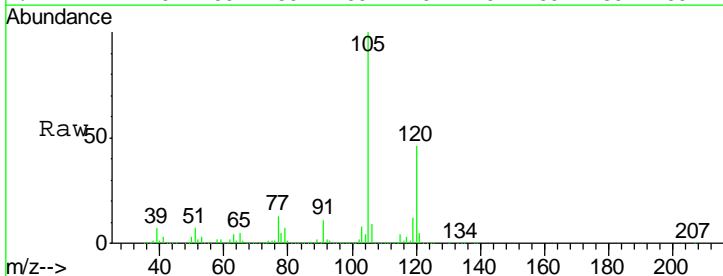
Instrument : MSVOA_X
 ClientSampled : S83-0019

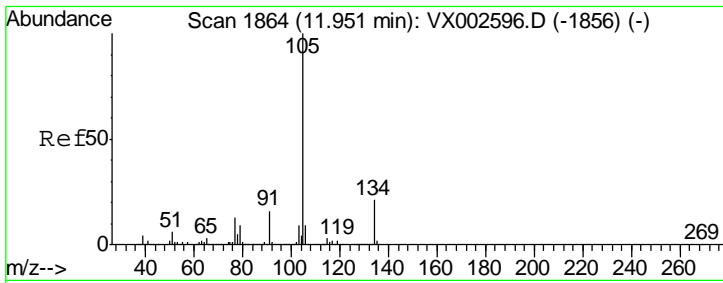
Tgt Ion	Resp	Lower	Upper
119	23281		
91	100	30.3	90.9
134	25.6	11.7	35.1



#84
 1,2,4-Trimethylbenzene
 Concen: 271.00 ug/l
 RT: 11.81 min Scan# 1841
 Delta R.T. 0.00 min
 Lab File: VX002847.D
 Acq: 22 Jun 2018 22:38

Tgt Ion	Resp	Lower	Upper
105	3052569		
120	100	22.3	66.8

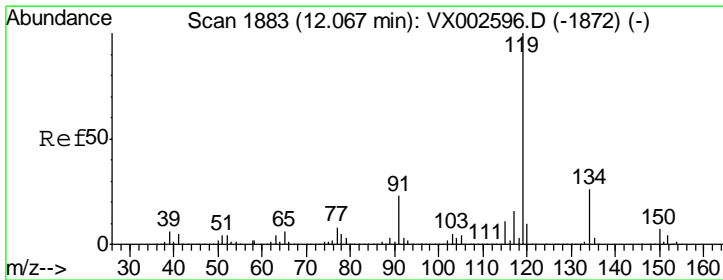
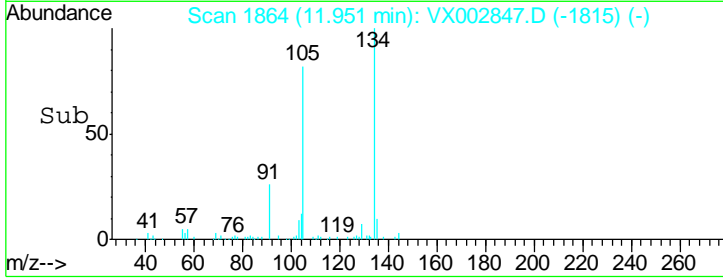
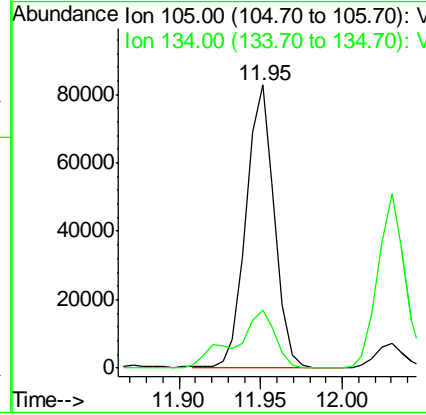
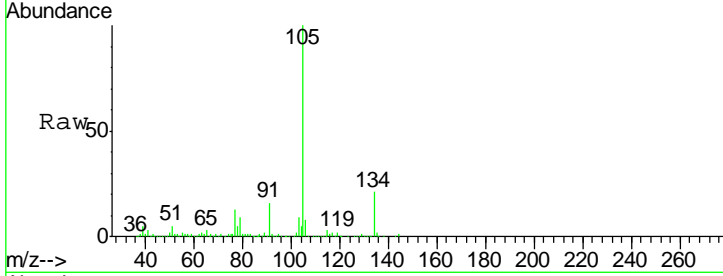




#85
 sec-Butylbenzene
 Concen: 7.50 ug/l
 RT: 11.95 min Scan# 1864
 Delta R.T. 0.00 min
 Lab File: VX002847.D
 Acq: 22 Jun 2018 22:38

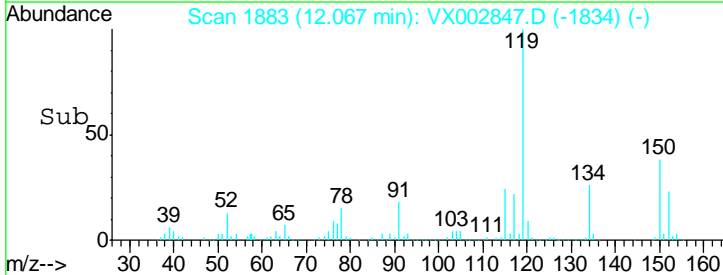
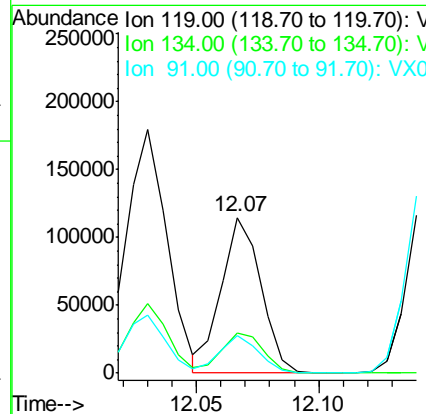
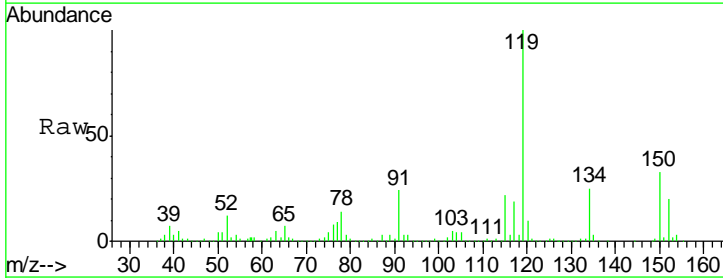
Instrument : MSVOA_X
 ClientSampled : S83-0019

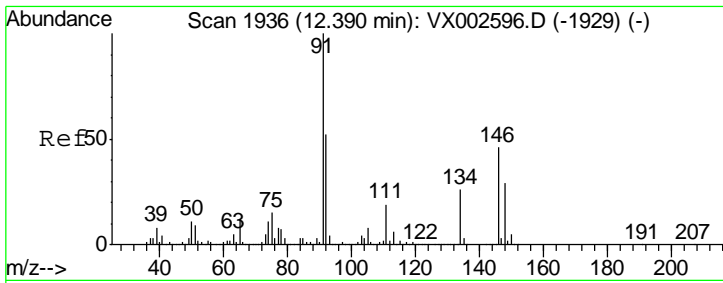
Tgt Ion	Resp	Lower	Upper
105	99228		
134	29.5	10.4	31.1



#86
 p-Isopropyltoluene
 Concen: 10.78 ug/l
 RT: 12.07 min Scan# 1883
 Delta R.T. 0.00 min
 Lab File: VX002847.D
 Acq: 22 Jun 2018 22:38

Tgt Ion	Resp	Lower	Upper
119	129001		
134	27.3	13.4	40.1
91	23.8	11.9	35.7

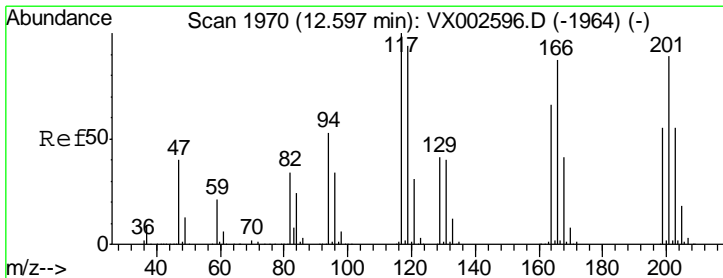
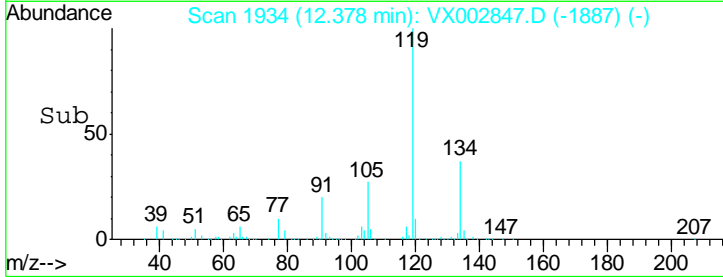
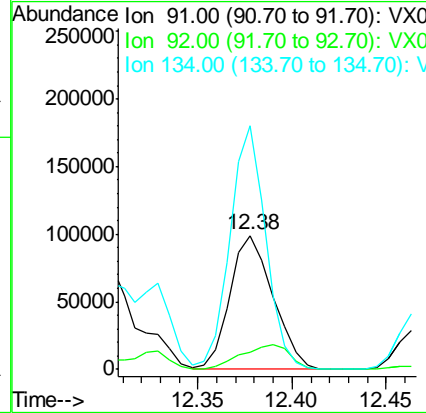
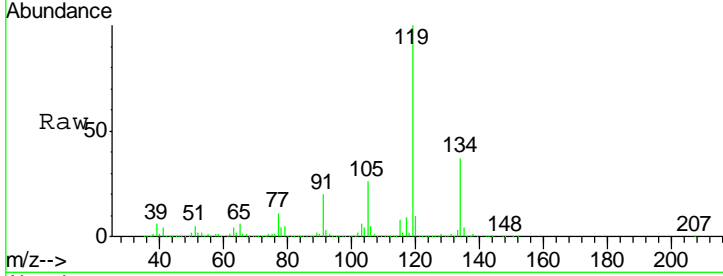




#89
 n-Butylbenzene
 Concen: 14.79 ug/l
 RT: 12.38 min Scan# 1934
 Delta R.T. -0.01 min
 Lab File: VX002847.D
 Acq: 22 Jun 2018 22:38

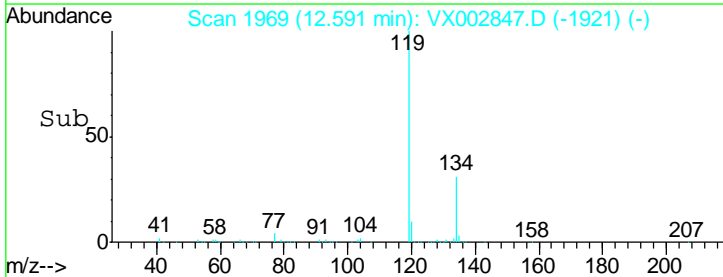
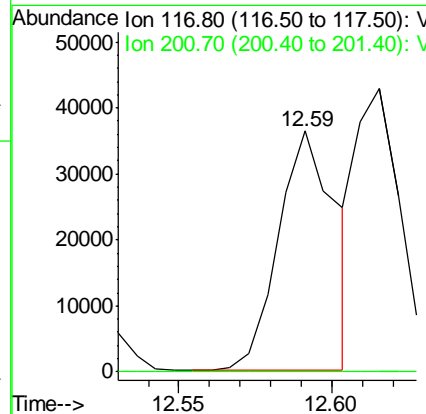
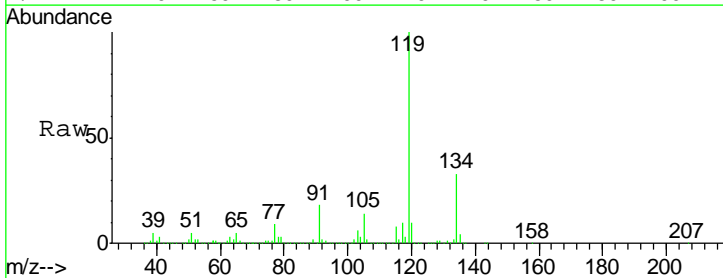
Instrument : MSVOA_X
 Client Sampled : S83-0019

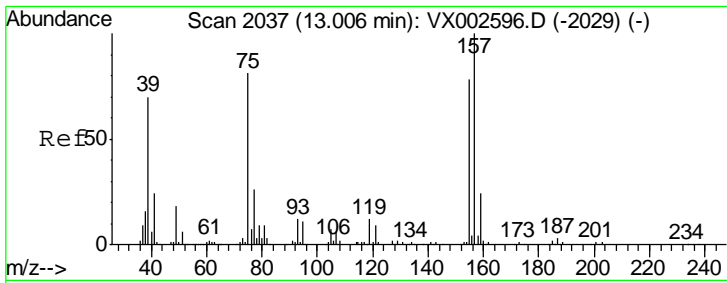
Tgt Ion	Resp	Lower	Upper
91	156077		
92	20.9	26.0	78.0#
134	150.9	13.5	40.5#



#90
 Hexachloroethane
 Concen: 26.76 ug/l
 RT: 12.59 min Scan# 1969
 Delta R.T. -0.01 min
 Lab File: VX002847.D
 Acq: 22 Jun 2018 22:38

Tgt Ion	Resp	Lower	Upper
117	47512		
117	100		
201	0.0	49.0	147.0#

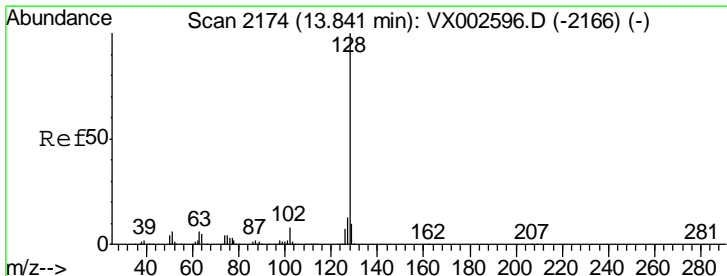
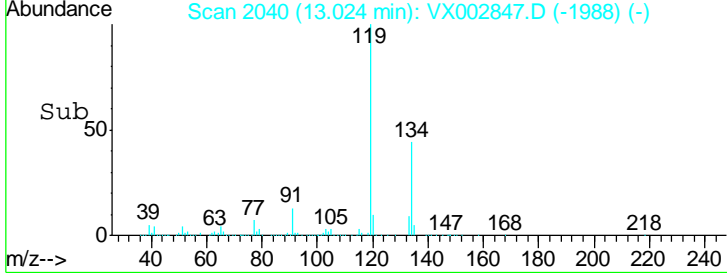
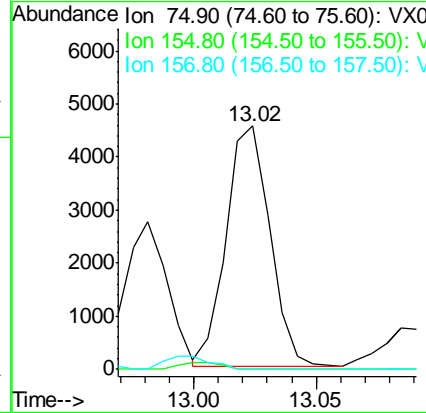
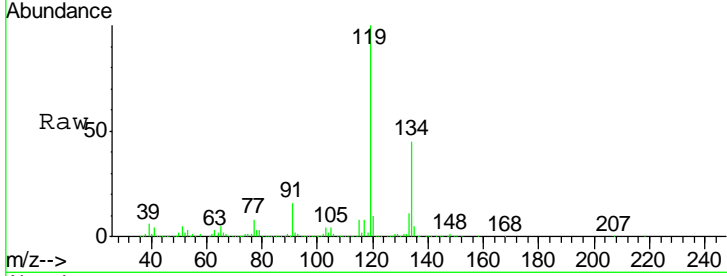




#92
 1,2-Dibromo-3-Chloropropane
 Concen: 6.92 ug/l
 RT: 13.02 min Scan# 2040
 Delta R.T. 0.02 min
 Lab File: VX002847.D
 Acq: 22 Jun 2018 22:38

Instrument : MSVOA_X
 ClientSampled : S83-0019

Tgt Ion	Resp	Lower	Upper
75	100		
155	0.0	45.8	137.4#
157	0.0	60.1	180.3#



#95
 Naphthalene
 Concen: 42.85 ug/l
 RT: 13.84 min Scan# 2174
 Delta R.T. 0.00 min
 Lab File: VX002847.D
 Acq: 22 Jun 2018 22:38

Tgt Ion	Resp	Lower	Upper
128	100		
127	13.5	10.4	15.6
129	12.1	8.6	13.0

