

Data Path : Z:\voasrv\HPCHEM1\MSVOA_X\Data\VX062322\
 Data File : VX029738.D
 Acq On : 23 Jun 2022 12:58
 Operator : JC/MD
 Sample : N3202-06 10X
 Misc : 5.0mL/MSVOA_X/WATER
 ALS Vial : 9 Sample Multiplier: 1

Instrument :
 MSVOA_X
 ClientSampleId :
 MW-28

Quant Time: Jun 24 05:38:20 2022
 Quant Method : Z:\voasrv\HPCHEM1\MSVOA_X\Method\82X061822W.M
 Quant Title : SW846 8260
 QLast Update : Mon Jun 20 01:31:01 2022
 Response via : Initial Calibration

Compound	R.T.	QIon	Response	Conc	Units	Dev(Min)
Internal Standards						
1) Pentafluorobenzene	5.556	168	267572	50.000	ug/l	0.00
34) 1,4-Difluorobenzene	6.763	114	456474	50.000	ug/l	0.00
63) Chlorobenzene-d5	10.055	117	392331	50.000	ug/l	0.00
72) 1,4-Dichlorobenzene-d4	12.024	152	180733	50.000	ug/l	0.00
System Monitoring Compounds						
33) 1,2-Dichloroethane-d4	5.958	65	145096	40.965	ug/l	0.00
Spiked Amount	50.000	Range	74 - 125	Recovery	=	81.940%
35) Dibromofluoromethane	5.391	113	132082	44.401	ug/l	0.00
Spiked Amount	50.000	Range	75 - 124	Recovery	=	88.800%
50) Toluene-d8	8.653	98	512522	47.161	ug/l	0.00
Spiked Amount	50.000	Range	86 - 113	Recovery	=	94.320%
62) 4-Bromofluorobenzene	11.079	95	186788	45.578	ug/l	0.00
Spiked Amount	50.000	Range	83 - 123	Recovery	=	91.160%
Target Compounds						
						Qvalue
3) Chloromethane	1.294	50	1303	0.373	ug/l #	77
5) Bromomethane	1.618	94	579	0.353	ug/l	96
6) Chloroethane	1.691	64	450	1.467	ug/l #	85
10) Methyl Iodide	2.459	142	686	3.219	ug/l #	80
11) Tert butyl alcohol	2.959	59	97941	122.158	ug/l	96
13) Acrolein	2.215	56	495	2.537	ug/l #	1
15) Acrylonitrile	3.117	53	1732	1.045	ug/l #	29
16) Acetone	2.380	43	15735	11.146	ug/l	98
19) Methyl tert-butyl Ether	3.117	73	194765	20.696	ug/l	100
22) Diisopropyl ether	3.757	45	9854	1.138	ug/l #	85
23) Vinyl Acetate	3.764	43	5178	0.716	ug/l #	66
25) 2-Butanone	4.568	43	7414	3.322	ug/l	92
31) Cyclohexane	5.464	56	7192	1.512	ug/l	95
36) 1,1-Dichloropropene	5.556	75	19517	4.847	ug/l #	50
38) Carbon Tetrachloride	5.556	117	27263	6.886	ug/l #	16
39) Methylcyclohexane	7.379	83	6853	1.365	ug/l	94
40) Benzene	6.044	78	232980	19.521	ug/l	98
42) 1,2-Dichloroethane	6.037	62	1912	0.466	ug/l #	73
43) Isopropyl Acetate	6.239	43	26312	4.100	ug/l #	57
44) Trichloroethene	7.129	130	1230	Below Cal		97
51) 4-Methyl-2-Pentanone	8.574	43	3520	0.851	ug/l	92
52) Toluene	8.720	92	571223	74.746	ug/l	97
53) t-1,3-Dichloropropene	8.720	75	6139	1.499	ug/l #	1
55) 1,1,2-Trichloroethane	9.110	97	716	0.232	ug/l #	16
59) 2-Hexanone	9.445	43	15347	4.900	ug/l	89
67) Ethyl Benzene	10.195	91	166813	12.046	ug/l	98
68) m/p-Xylenes	10.305	106	1049658	194.359	ug/l	98
69) o-Xylene	10.646	106	922016	172.801	ug/l	99
70) Styrene	10.646	104	45229	5.177	ug/l #	1
73) Isopropylbenzene	10.963	105	11925	0.880	ug/l	99
76) 1,2,3-Trichloropropane	11.378	75	7658	1.945	ug/l #	1
78) n-propylbenzene	11.305	91	19969	1.308	ug/l #	52
79) 2-Chlorotoluene	11.378	91	117801	12.465	ug/l #	40
80) 1,3,5-Trimethylbenzene	11.451	105	847093	74.226	ug/l	100
81) trans-1,4-Dichloro-2-b...	11.079	75	86754	73.302	ug/l #	15
82) 4-Chlorotoluene	11.451	91	86970	8.070	ug/l #	45

Data Path : Z:\voasrv\HPCHEM1\MSVOA_X\Data\VX062322\
 Data File : VX029738.D
 Acq On : 23 Jun 2022 12:58
 Operator : JC/MD
 Sample : N3202-06 10X
 Misc : 5.0mL/MSVOA_X/WATER
 ALS Vial : 9 Sample Multiplier: 1

Instrument :
 MSVOA_X
 ClientSampleId :
 MW-28

Quant Time: Jun 24 05:38:20 2022
 Quant Method : Z:\voasrv\HPCHEM1\MSVOA_X\Method\82X061822W.M
 Quant Title : SW846 8260
 QLast Update : Mon Jun 20 01:31:01 2022
 Response via : Initial Calibration

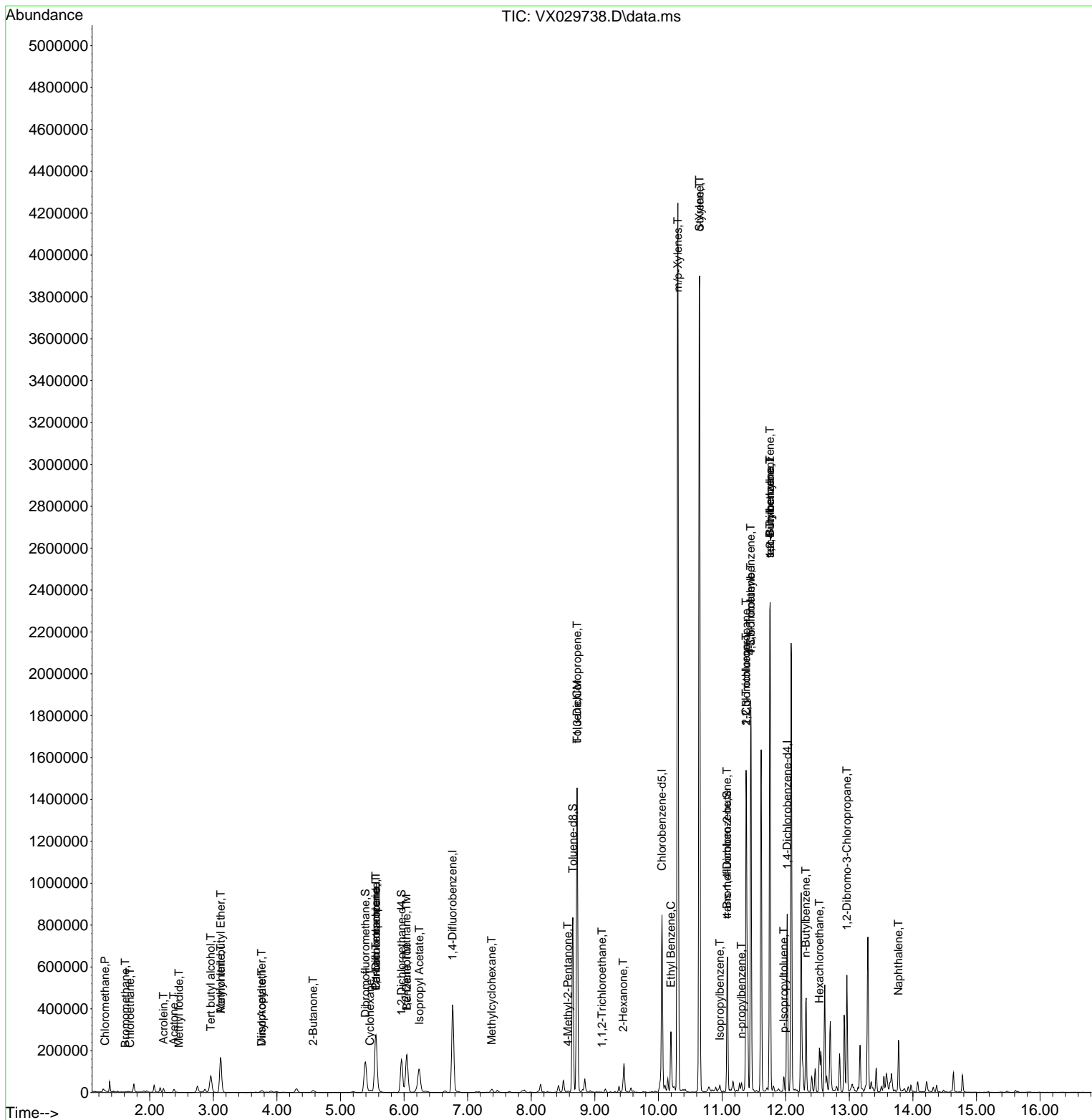
Compound	R.T.	QIon	Response	Conc	Units	Dev(Min)
83) tert-Butylbenzene	11.756	119	131694	11.835	ug/l #	55
84) 1,2,4-Trimethylbenzene	11.756	105	1079532	94.845	ug/l	100
85) sec-Butylbenzene	11.756	105	1079532	78.281	ug/l #	56
86) p-Isopropyltoluene	11.969	119	30751	2.663	ug/l	97
89) n-Butylbenzene	12.317	91	36719	3.768	ug/l #	1
90) Hexachloroethane	12.530	117	8634	5.222	ug/l #	10
92) 1,2-Dibromo-3-Chloropr...	12.963	75	1573	1.620	ug/l #	1
95) Naphthalene	13.774	128	157819	12.449	ug/l	99

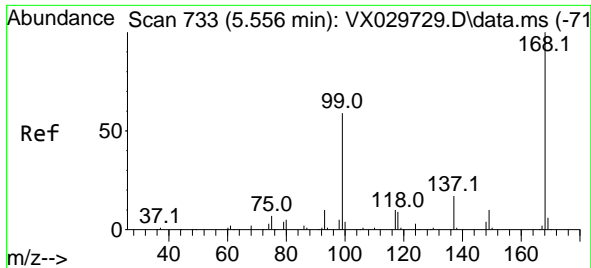
(#) = qualifier out of range (m) = manual integration (+) = signals summed

Data Path : Z:\voasrv\HPCHEM1\MSVOA_X\Data\VX062322\
Data File : VX029738.D
Acq On : 23 Jun 2022 12:58
Operator : JC/MD
Sample : N3202-06 10X
Misc : 5.0mL/MSVOA_X/WATER
ALS Vial : 9 Sample Multiplier: 1

Instrument :
MSVOA_X
ClientSampleId :
MW-28

Quant Time: Jun 24 05:38:20 2022
Quant Method : Z:\voasrv\HPCHEM1\MSVOA_X\Method\82X061822W.M
Quant Title : SW846 8260
QLast Update : Mon Jun 20 01:31:01 2022
Response via : Initial Calibration

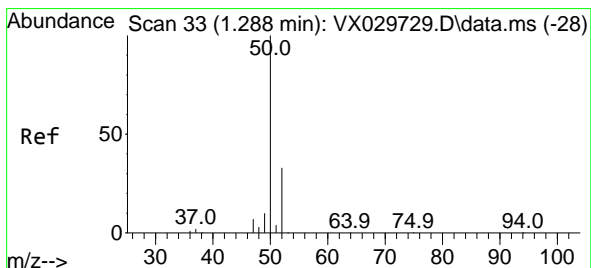
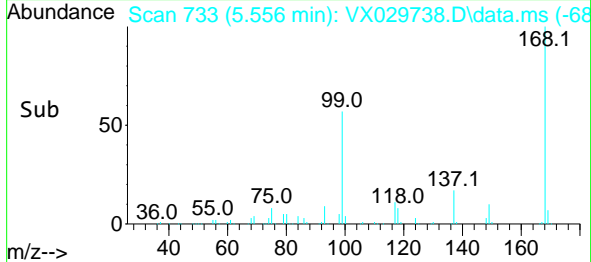
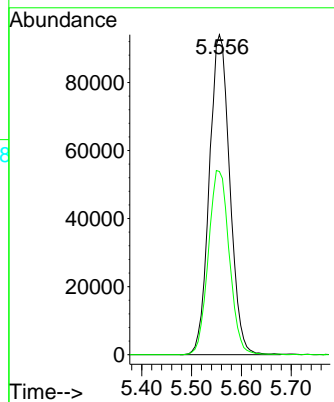
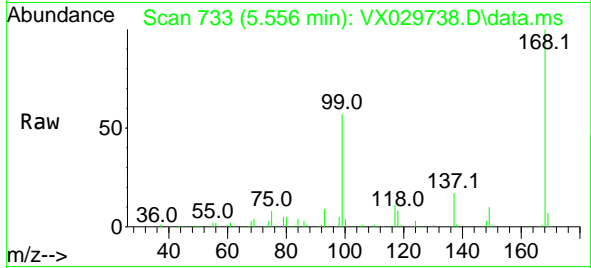




#1
 Pentafluorobenzene
 Concen: 50.000 ug/l
 RT: 5.556 min Scan# 71
 Delta R.T. -0.000 min
 Lab File: VX029738.D
 Acq: 23 Jun 2022 12:58

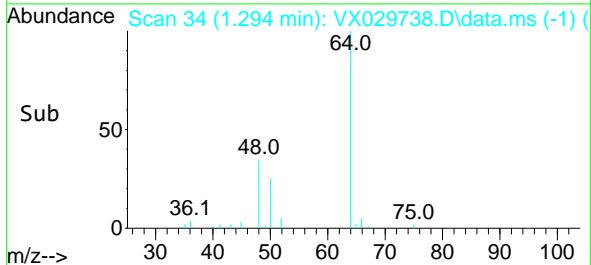
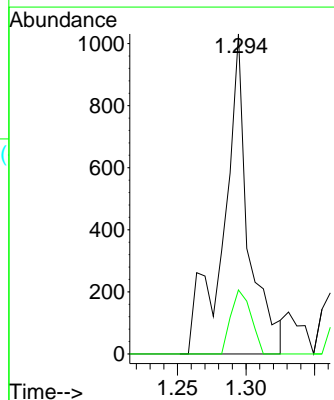
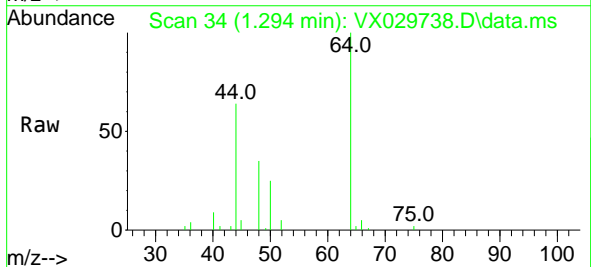
Instrument : MSVOA_X
 ClientSampleId : MW-28

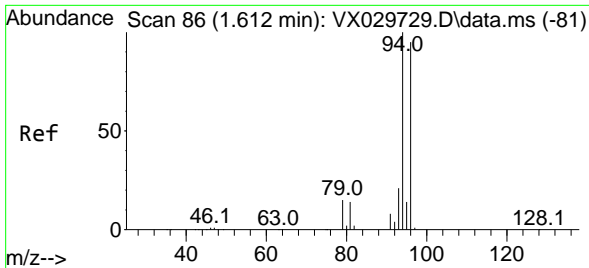
Tgt Ion:168 Resp: 267572
 Ion Ratio Lower Upper
 168 100
 99 57.3 41.7 62.5



#3
 Chloromethane
 Concen: 0.373 ug/l
 RT: 1.294 min Scan# 34
 Delta R.T. 0.006 min
 Lab File: VX029738.D
 Acq: 23 Jun 2022 12:58

Tgt Ion: 50 Resp: 1303
 Ion Ratio Lower Upper
 50 100
 52 20.0 26.4 39.6#

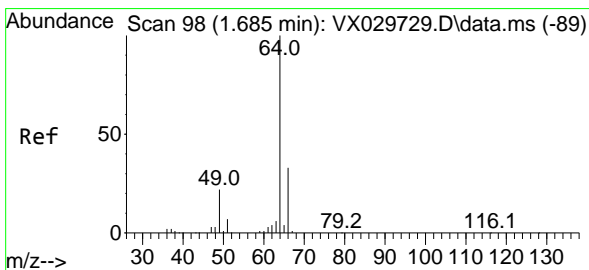
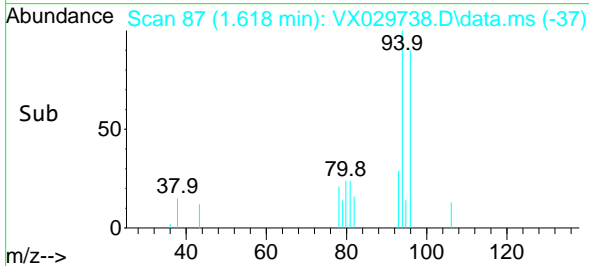
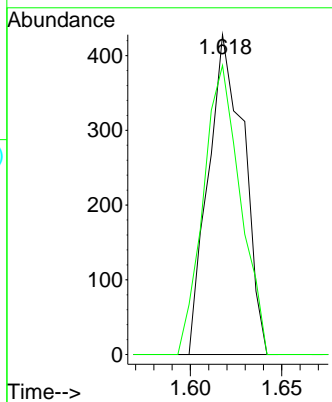
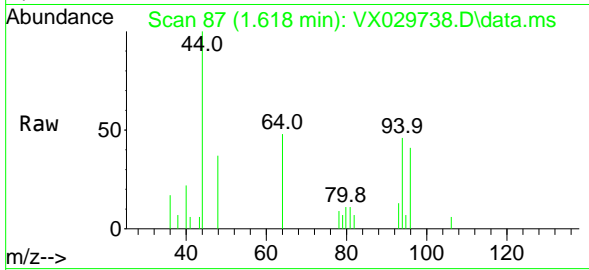




#5
 Bromomethane
 Concen: 0.353 ug/l
 RT: 1.618 min Scan# 81
 Delta R.T. 0.007 min
 Lab File: VX029738.D
 Acq: 23 Jun 2022 12:58

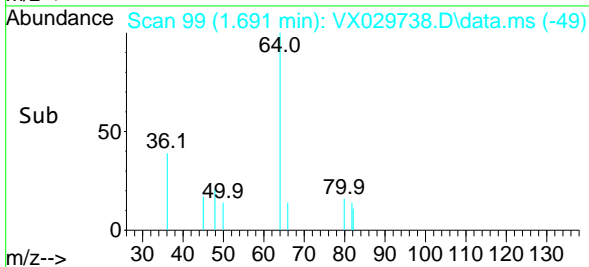
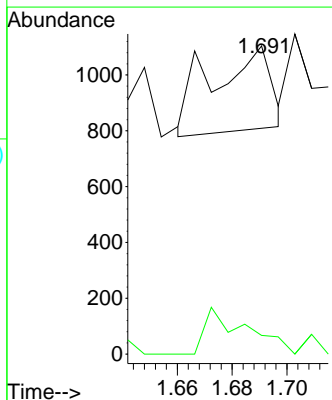
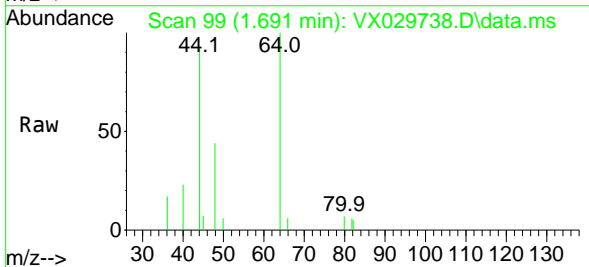
Instrument :
 MSVOA_X
 ClientSampleId :
 MW-28

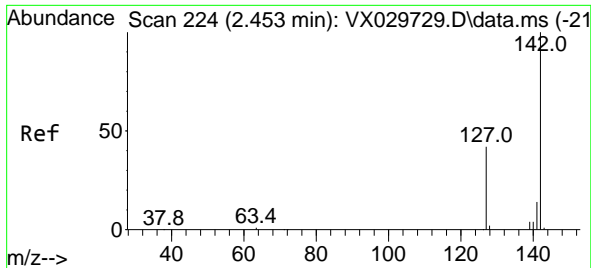
Tgt Ion: 94 Resp: 579
 Ion Ratio Lower Upper
 94 100
 96 90.4 75.3 112.9



#6
 Chloroethane
 Concen: 1.467 ug/l
 RT: 1.691 min Scan# 99
 Delta R.T. 0.006 min
 Lab File: VX029738.D
 Acq: 23 Jun 2022 12:58

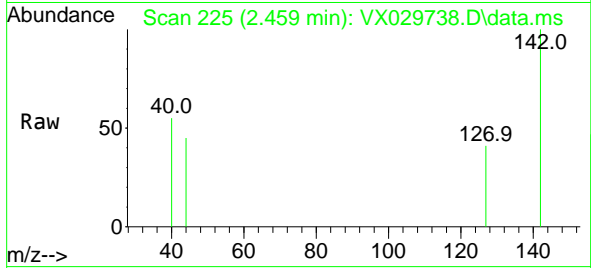
Tgt Ion: 64 Resp: 450
 Ion Ratio Lower Upper
 64 100
 66 23.2 25.3 37.9#



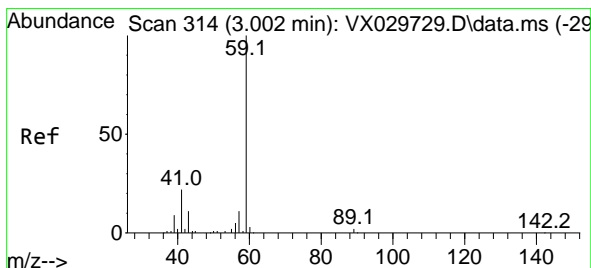
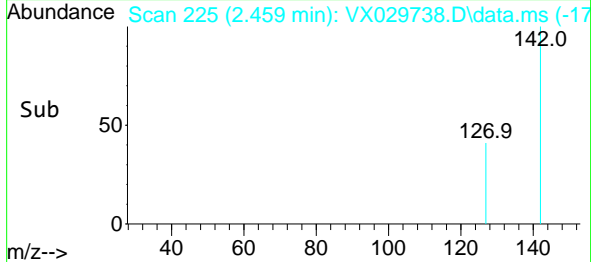
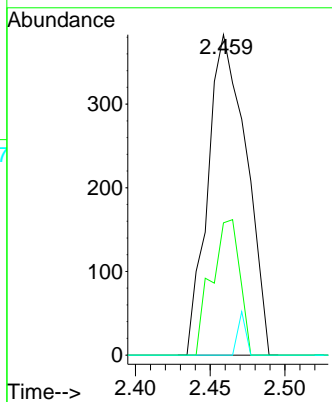


#10
 Methyl Iodide
 Concen: 3.219 ug/l
 RT: 2.459 min Scan# 21
 Delta R.T. 0.006 min
 Lab File: VX029738.D
 Acq: 23 Jun 2022 12:58

Instrument : MSVOA_X
 Client SampleId : MW-28

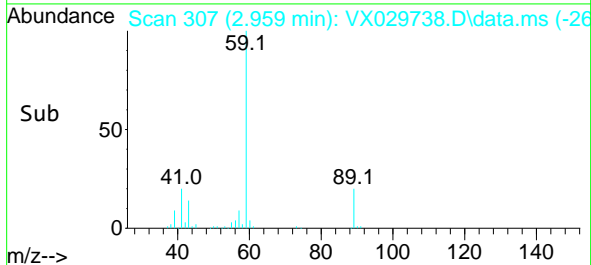
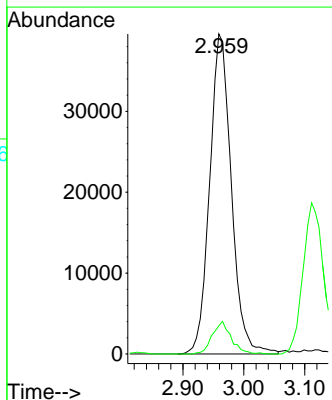
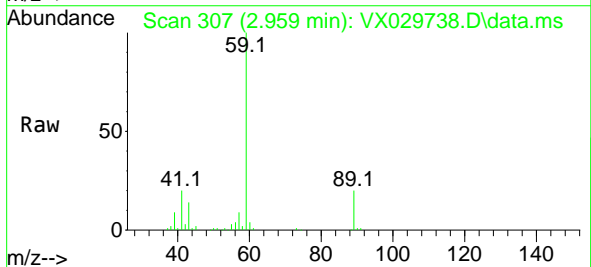


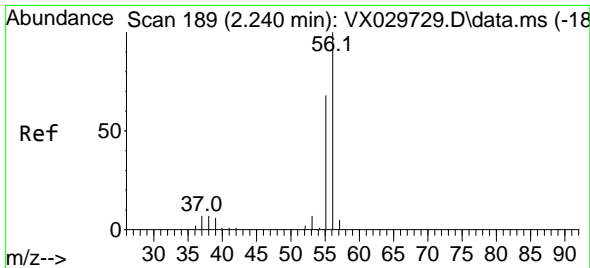
Tgt Ion:142 Resp: 686
 Ion Ratio Lower Upper
 142 100
 127 31.0 33.9 50.9#
 141 2.8 11.4 17.2#



#11
 Tert butyl alcohol
 Concen: 122.158 ug/l
 RT: 2.959 min Scan# 307
 Delta R.T. -0.024 min
 Lab File: VX029738.D
 Acq: 23 Jun 2022 12:58

Tgt Ion: 59 Resp: 97941
 Ion Ratio Lower Upper
 59 100
 57 8.9 8.3 12.5

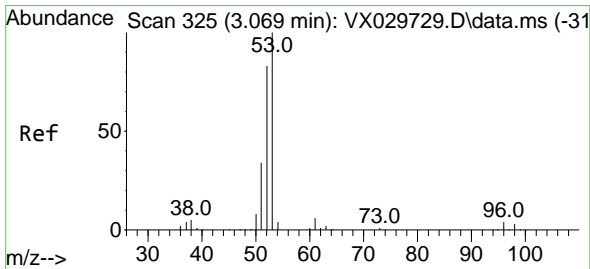
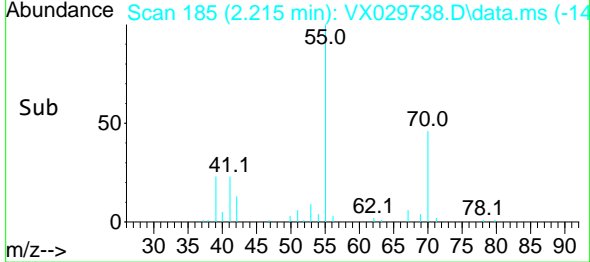
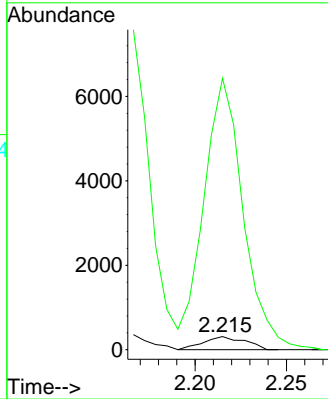
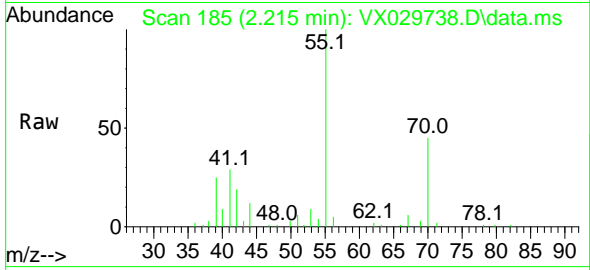




#13
 Acrolein
 Concen: 2.537 ug/l
 RT: 2.215 min Scan# 11
 Delta R.T. -0.024 min
 Lab File: VX029738.D
 Acq: 23 Jun 2022 12:58

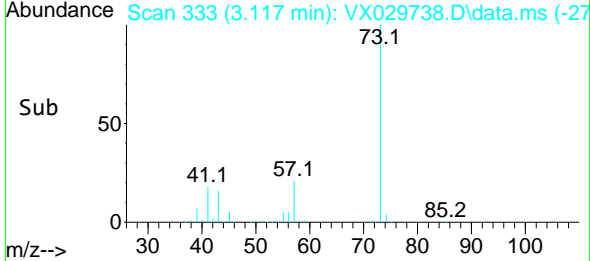
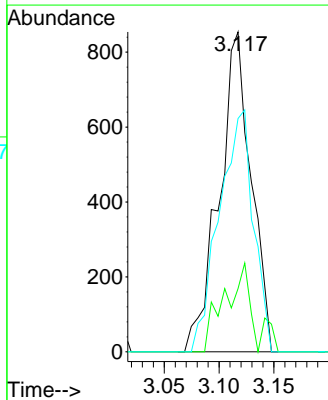
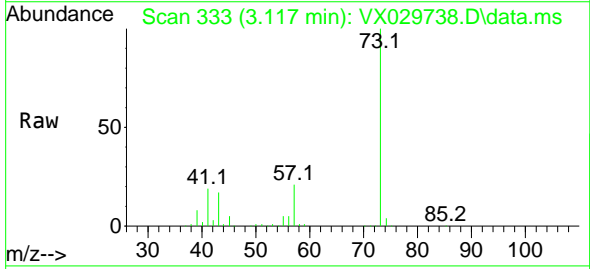
Instrument : MSVOA_X
 ClientSampleId : MW-28

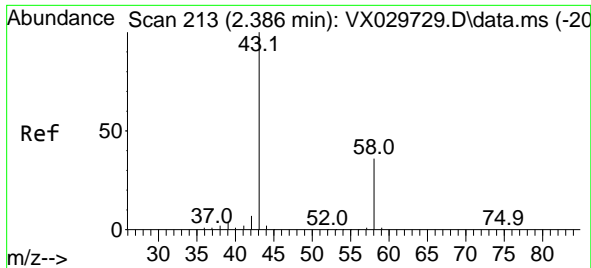
Tgt Ion: 56 Resp: 495
 Ion Ratio Lower Upper
 56 100
 55 1946.5 55.0 82.6#



#15
 Acrylonitrile
 Concen: 1.045 ug/l
 RT: 3.117 min Scan# 333
 Delta R.T. 0.049 min
 Lab File: VX029738.D
 Acq: 23 Jun 2022 12:58

Tgt Ion: 53 Resp: 1732
 Ion Ratio Lower Upper
 53 100
 52 21.5 65.7 98.5#
 51 80.7 28.4 42.6#

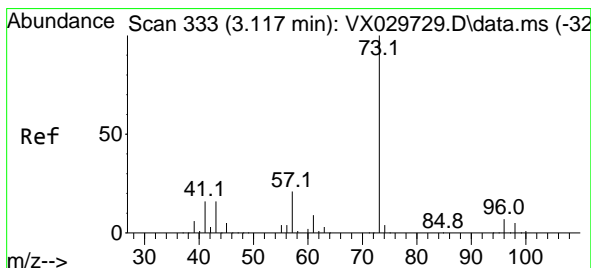
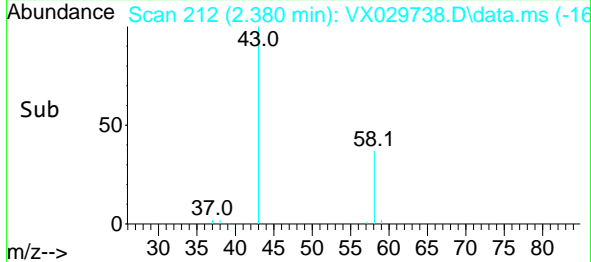
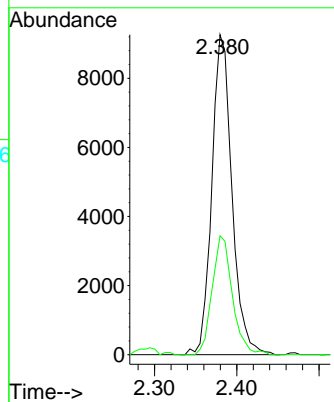
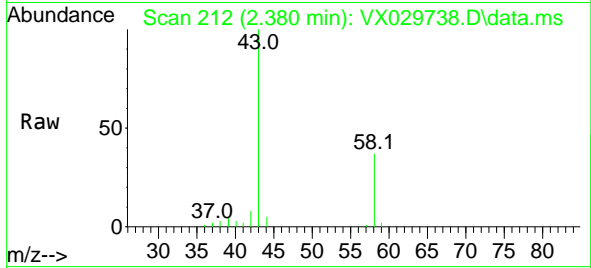




#16
 Acetone
 Concen: 11.146 ug/l
 RT: 2.380 min Scan# 213
 Delta R.T. -0.006 min
 Lab File: VX029738.D
 Acq: 23 Jun 2022 12:58

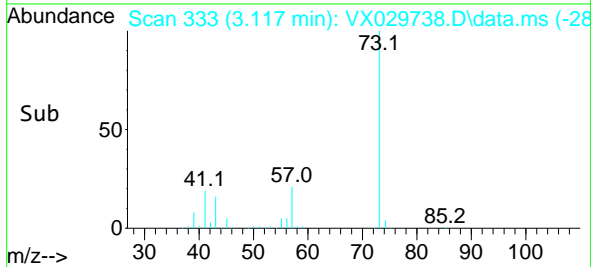
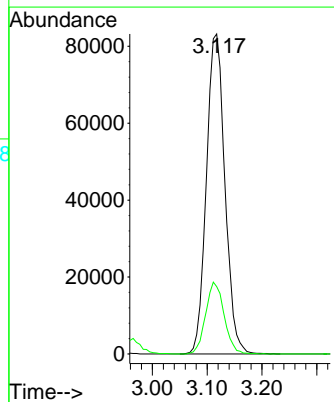
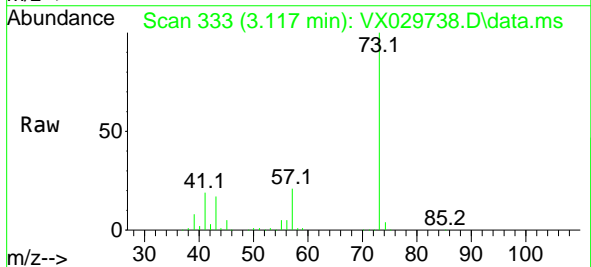
Instrument : MSVOA_X
 ClientSampleId : MW-28

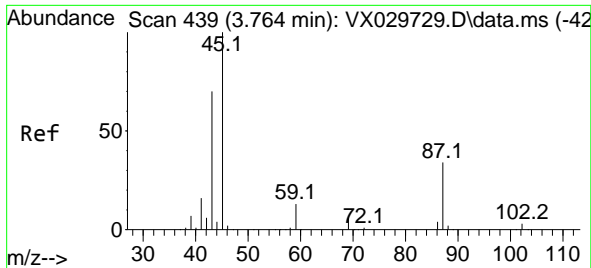
Tgt Ion: 43 Resp: 15735
 Ion Ratio Lower Upper
 43 100
 58 37.1 28.8 43.2



#19
 Methyl tert-butyl Ether
 Concen: 20.696 ug/l
 RT: 3.117 min Scan# 333
 Delta R.T. 0.000 min
 Lab File: VX029738.D
 Acq: 23 Jun 2022 12:58

Tgt Ion: 73 Resp: 194765
 Ion Ratio Lower Upper
 73 100
 57 21.1 16.8 25.2



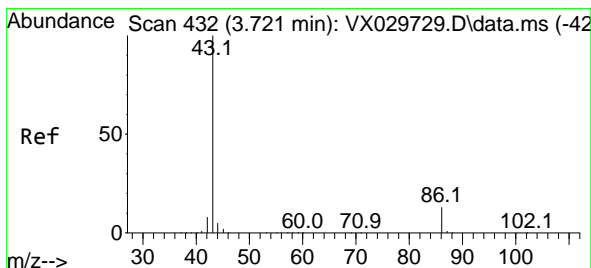
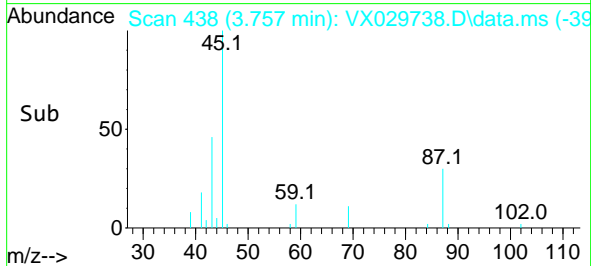
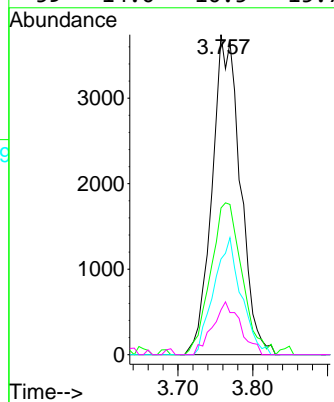
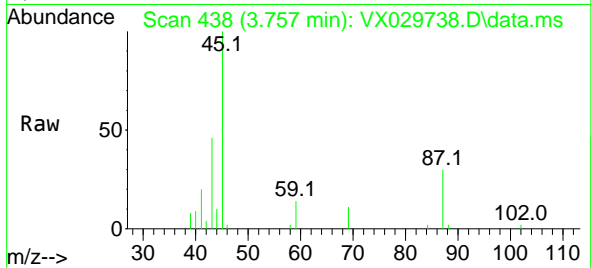


#22
 Diisopropyl ether
 Concen: 1.138 ug/l
 RT: 3.757 min Scan# 41
 Delta R.T. -0.006 min
 Lab File: VX029738.D
 Acq: 23 Jun 2022 12:58

Instrument : MSVOA_X
 ClientSampleId : MW-28

Tgt Ion: 45 Resp: 9854

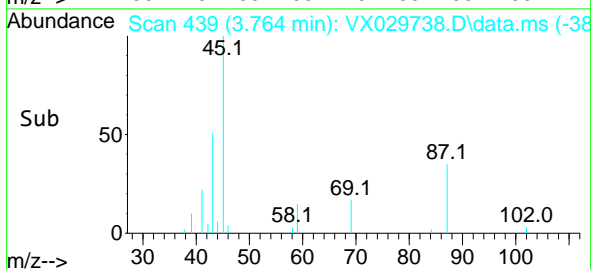
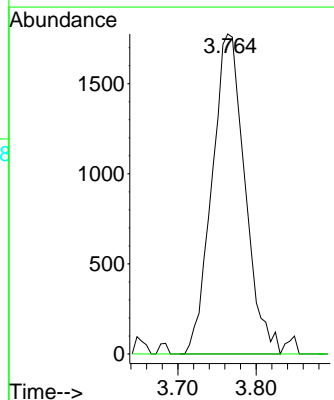
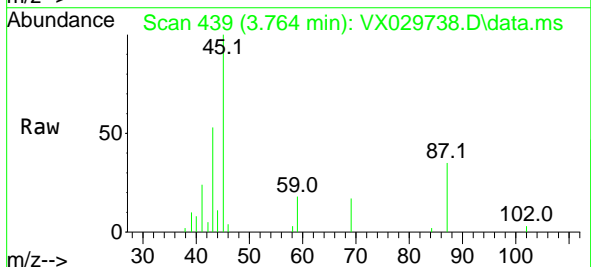
Ion	Ratio	Lower	Upper
45	100		
43	45.9	50.8	76.2#
87	29.9	26.6	39.8
59	14.0	10.5	15.7

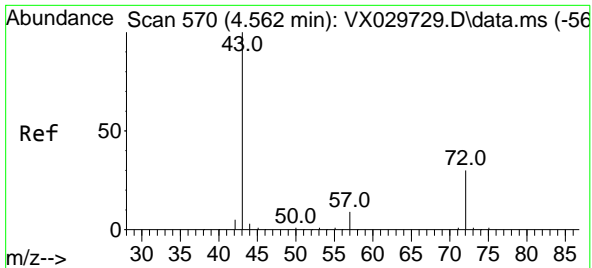


#23
 Vinyl Acetate
 Concen: 0.716 ug/l
 RT: 3.764 min Scan# 439
 Delta R.T. 0.037 min
 Lab File: VX029738.D
 Acq: 23 Jun 2022 12:58

Tgt Ion: 43 Resp: 5178

Ion	Ratio	Lower	Upper
43	100		
86	0.0	10.8	16.2#

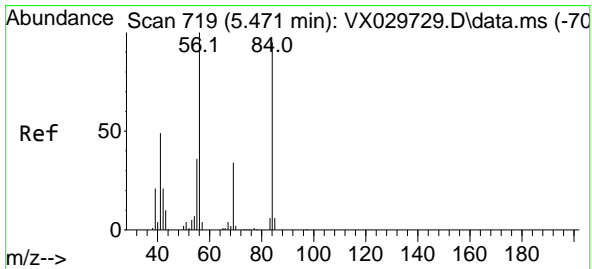
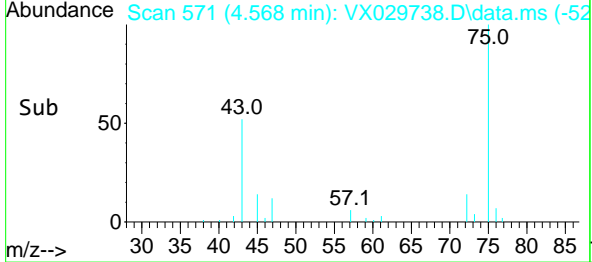
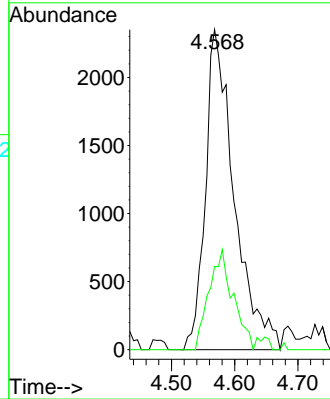
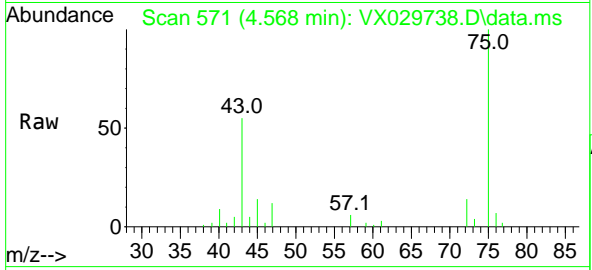




#25
 2-Butanone
 Concen: 3.322 ug/l
 RT: 4.568 min Scan# 51
 Delta R.T. 0.006 min
 Lab File: VX029738.D
 Acq: 23 Jun 2022 12:58

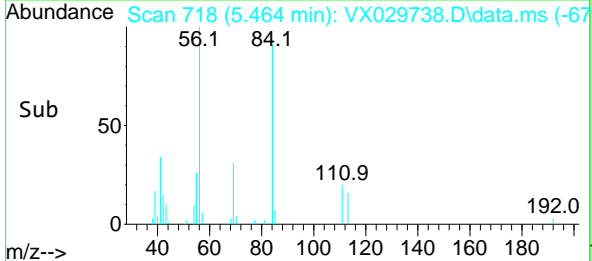
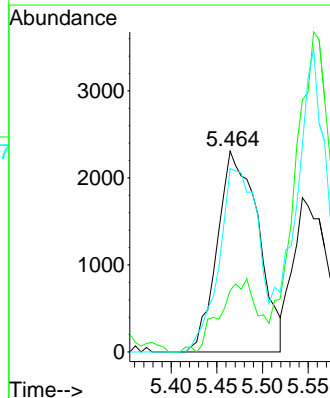
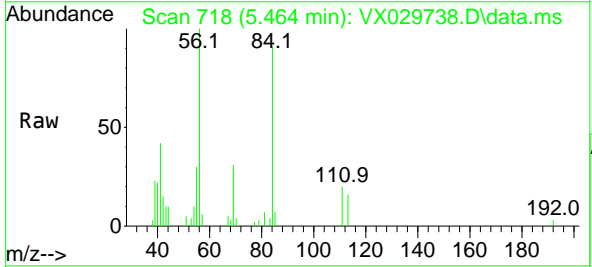
Instrument : MSVOA_X
 ClientSampleId : MW-28

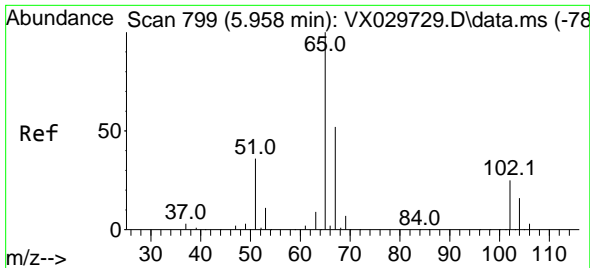
Tgt Ion: 43 Resp: 7414
 Ion Ratio Lower Upper
 43 100
 72 26.0 24.4 36.6



#31
 Cyclohexane
 Concen: 1.512 ug/l
 RT: 5.464 min Scan# 718
 Delta R.T. -0.013 min
 Lab File: VX029738.D
 Acq: 23 Jun 2022 12:58

Tgt Ion: 56 Resp: 7192
 Ion Ratio Lower Upper
 56 100
 69 30.6 26.7 40.1
 84 91.4 77.2 115.8

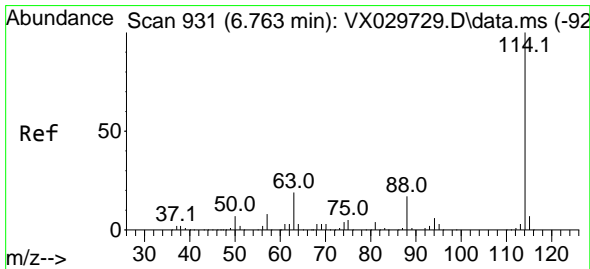
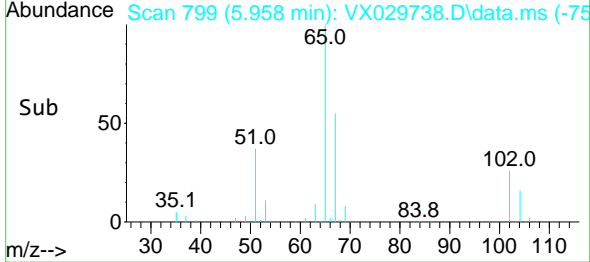
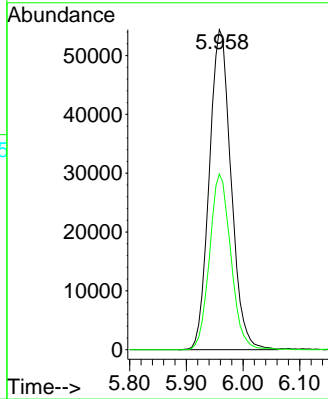
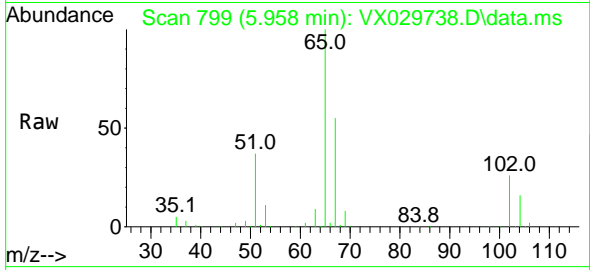




#33
 1,2-Dichloroethane-d4
 Concen: 40.965 ug/l
 RT: 5.958 min Scan# 799
 Delta R.T. 0.000 min
 Lab File: VX029738.D
 Acq: 23 Jun 2022 12:58

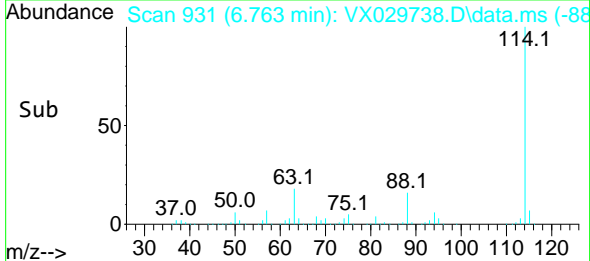
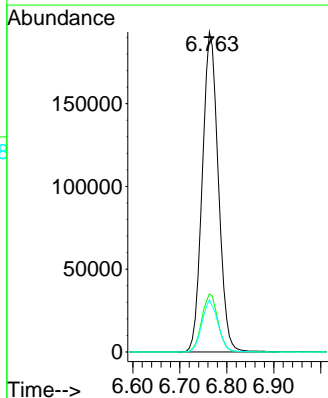
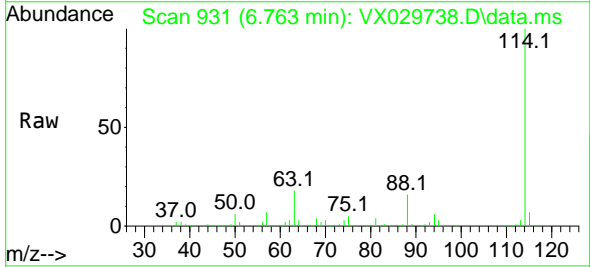
Instrument : MSVOA_X
 ClientSampleId : MW-28

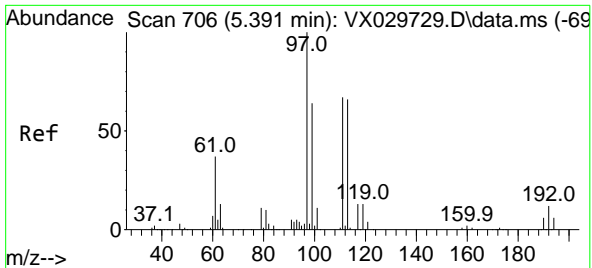
Tgt Ion: 65 Resp: 145096
 Ion Ratio Lower Upper
 65 100
 67 53.6 0.0 107.4



#34
 1,4-Difluorobenzene
 Concen: 50.000 ug/l
 RT: 6.763 min Scan# 931
 Delta R.T. -0.000 min
 Lab File: VX029738.D
 Acq: 23 Jun 2022 12:58

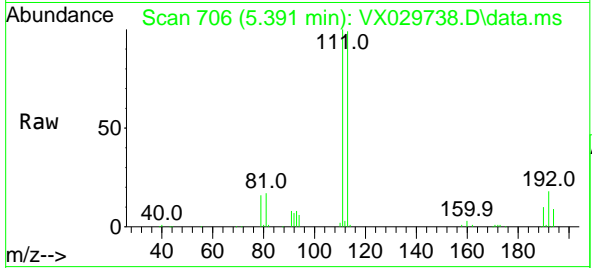
Tgt Ion: 114 Resp: 456474
 Ion Ratio Lower Upper
 114 100
 63 18.1 0.0 36.8
 88 16.3 0.0 32.4



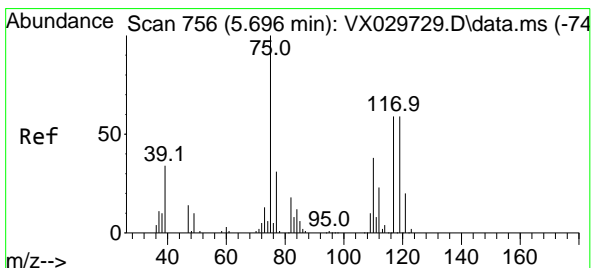
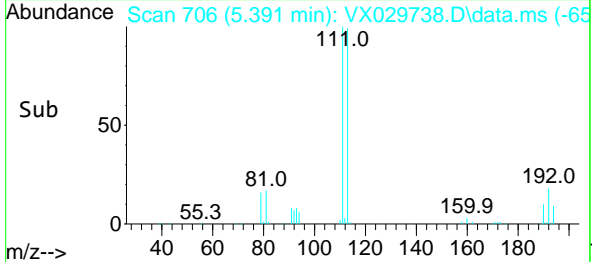
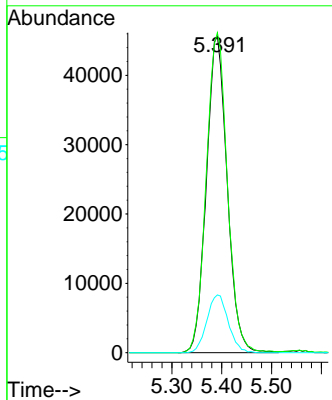


#35
 Dibromofluoromethane
 Concen: 44.401 ug/l
 RT: 5.391 min Scan# 706
 Delta R.T. 0.000 min
 Lab File: VX029738.D
 Acq: 23 Jun 2022 12:58

Instrument : MSVOA_X
 ClientSampleId : MW-28

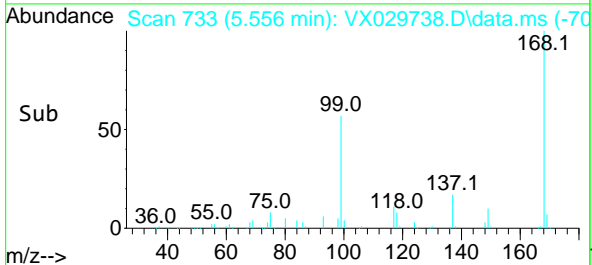
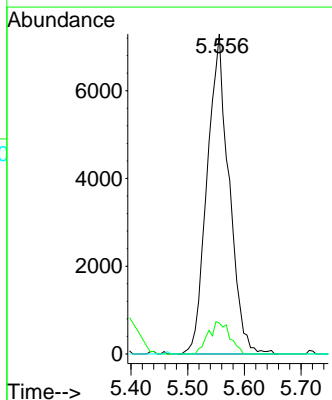
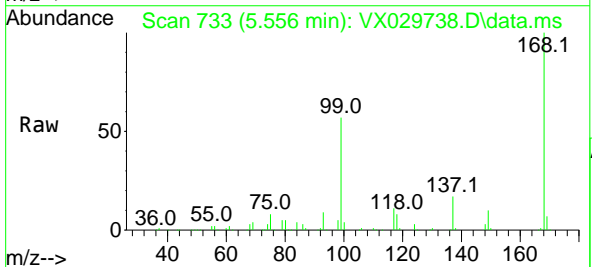


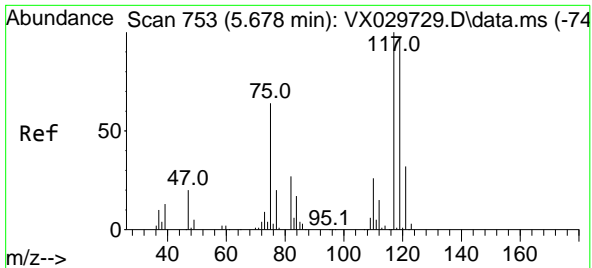
Tgt Ion:113 Resp: 132082
 Ion Ratio Lower Upper
 113 100
 111 102.8 82.8 124.2
 192 18.7 16.9 25.3



#36
 1,1-Dichloropropene
 Concen: 4.847 ug/l
 RT: 5.556 min Scan# 733
 Delta R.T. -0.140 min
 Lab File: VX029738.D
 Acq: 23 Jun 2022 12:58

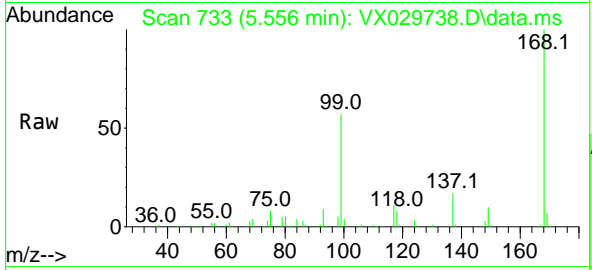
Tgt Ion: 75 Resp: 19517
 Ion Ratio Lower Upper
 75 100
 110 9.9 18.3 54.8#
 77 0.0 24.8 37.2#



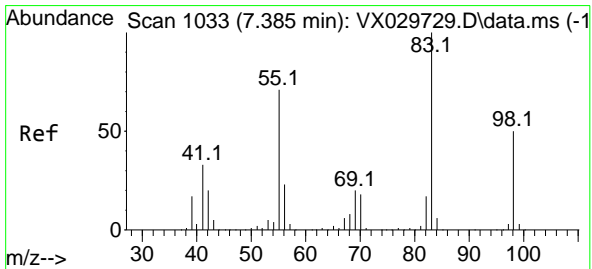
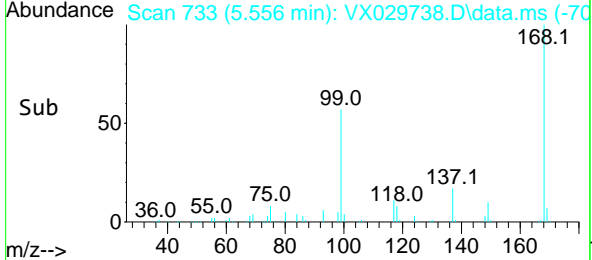
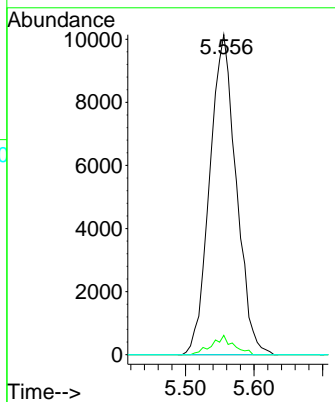


#38
 Carbon Tetrachloride
 Concen: 6.886 ug/l
 RT: 5.556 min Scan# 71
 Delta R.T. -0.128 min
 Lab File: VX029738.D
 Acq: 23 Jun 2022 12:58

Instrument : MSVOA_X
 Client Sample Id : MW-28

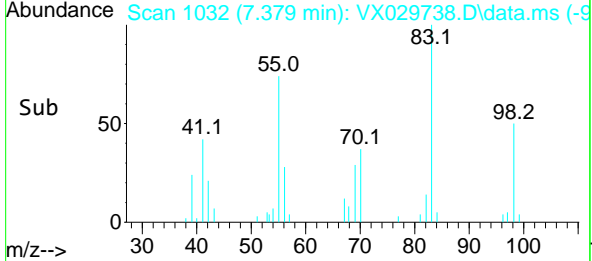
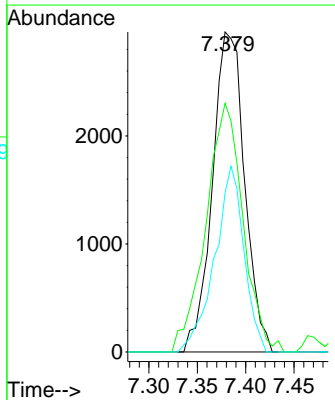
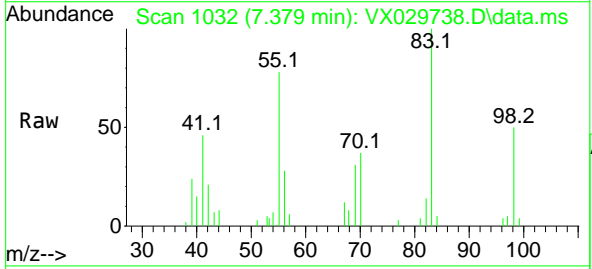


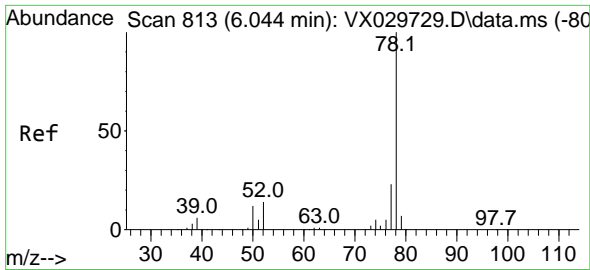
Tgt Ion: 117 Resp: 27263
 Ion Ratio Lower Upper
 117 100
 119 6.0 77.3 115.9#
 121 0.0 24.2 36.2#



#39
 Methylcyclohexane
 Concen: 1.365 ug/l
 RT: 7.379 min Scan# 1032
 Delta R.T. -0.006 min
 Lab File: VX029738.D
 Acq: 23 Jun 2022 12:58

Tgt Ion: 83 Resp: 6853
 Ion Ratio Lower Upper
 83 100
 55 74.2 54.6 81.8
 98 49.8 37.4 56.2

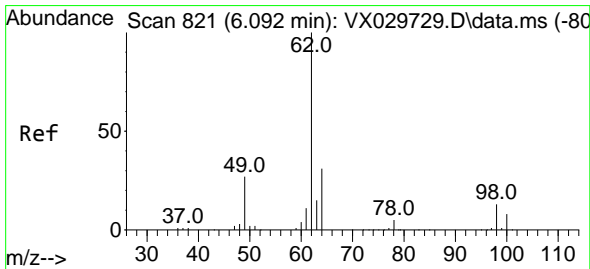
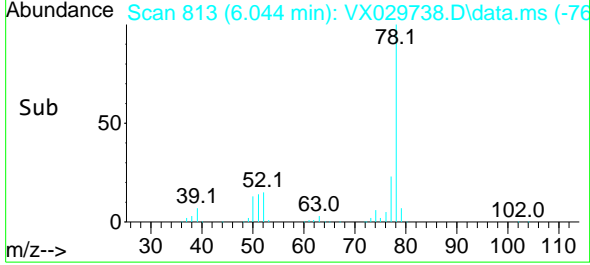
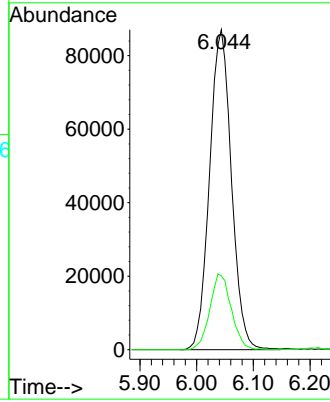
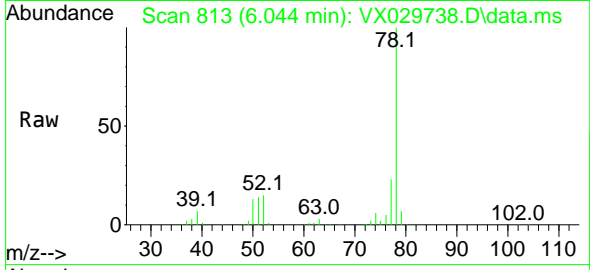




#40
Benzene
Concen: 19.521 ug/l
RT: 6.044 min Scan# 813
Delta R.T. -0.000 min
Lab File: VX029738.D
Acq: 23 Jun 2022 12:58

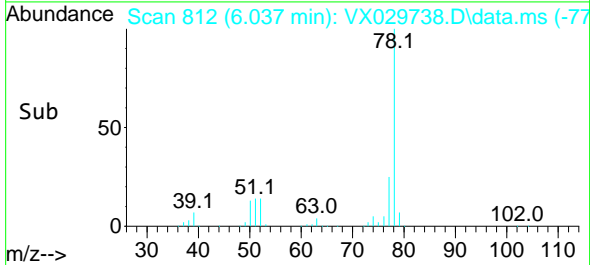
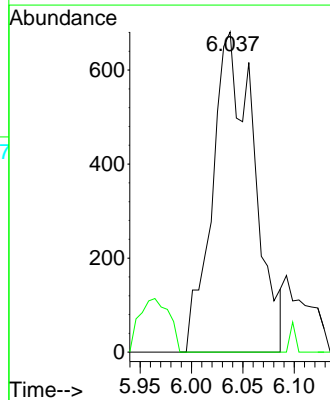
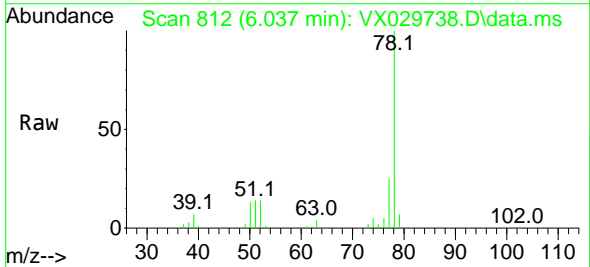
Instrument : MSVOA_X
ClientSampleId : MW-28

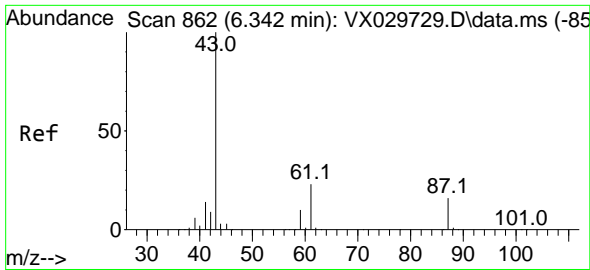
Tgt Ion: 78 Resp: 232980
Ion Ratio Lower Upper
78 100
77 23.1 19.3 28.9



#42
1,2-Dichloroethane
Concen: 0.466 ug/l
RT: 6.037 min Scan# 812
Delta R.T. -0.055 min
Lab File: VX029738.D
Acq: 23 Jun 2022 12:58

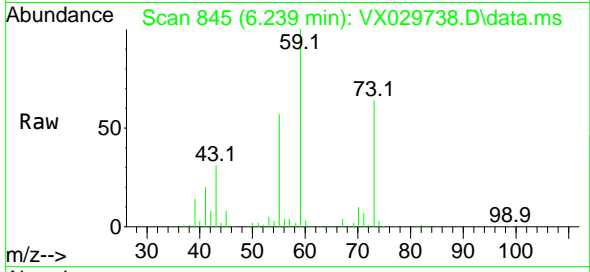
Tgt Ion: 62 Resp: 1912
Ion Ratio Lower Upper
62 100
98 0.0 0.0 20.4



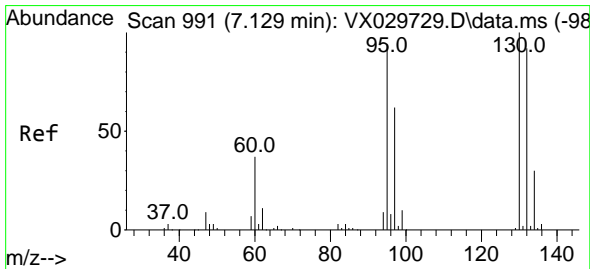
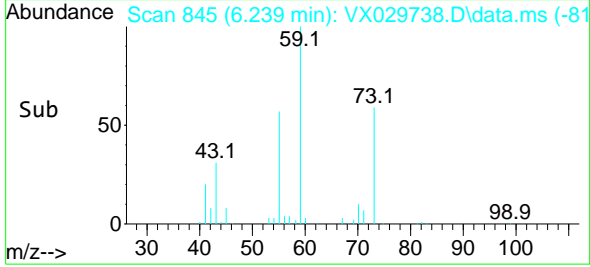
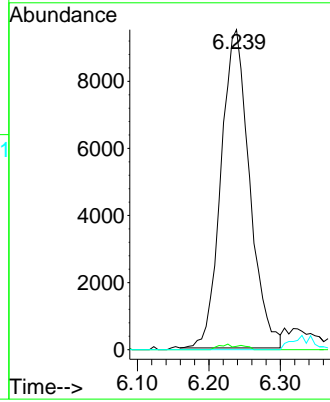


#43
 Isopropyl Acetate
 Concen: 4.100 ug/l
 RT: 6.239 min Scan# 845
 Delta R.T. -0.103 min
 Lab File: VX029738.D
 Acq: 23 Jun 2022 12:58

Instrument : MSVOA_X
 ClientSampleId : MW-28

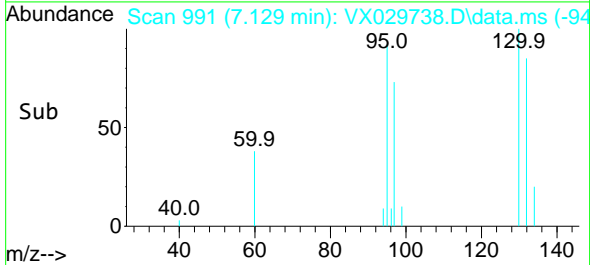
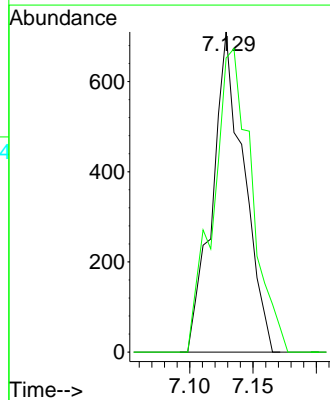
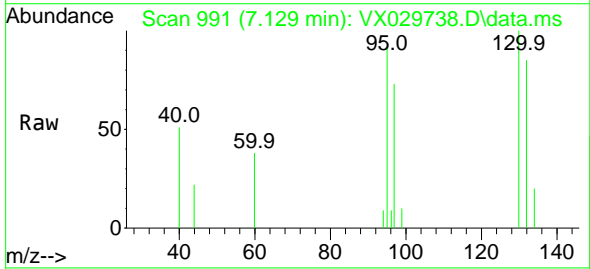


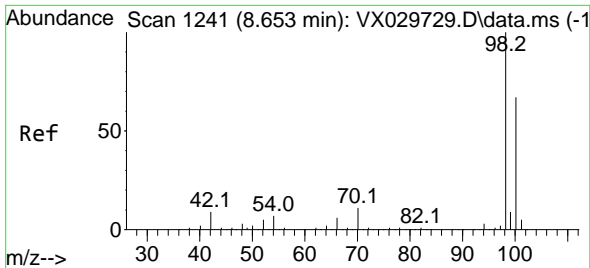
Tgt Ion: 43 Resp: 26312
 Ion Ratio Lower Upper
 43 100
 61 0.9 18.5 27.7#
 87 0.0 13.0 19.6#



#44
 Trichloroethene
 Concen: Below Cal
 RT: 7.129 min Scan# 991
 Delta R.T. -0.000 min
 Lab File: VX029738.D
 Acq: 23 Jun 2022 12:58

Tgt Ion:130 Resp: 1230
 Ion Ratio Lower Upper
 130 100
 95 91.8 0.0 188.8

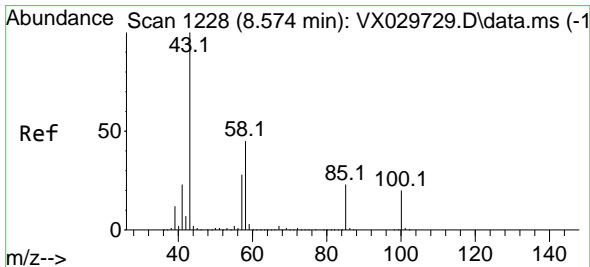
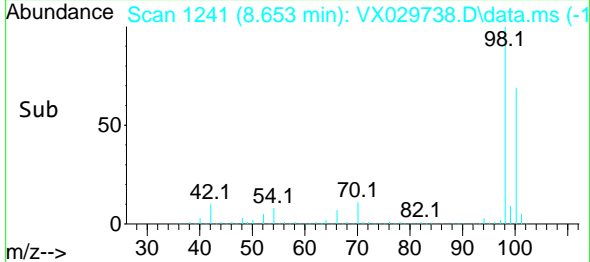
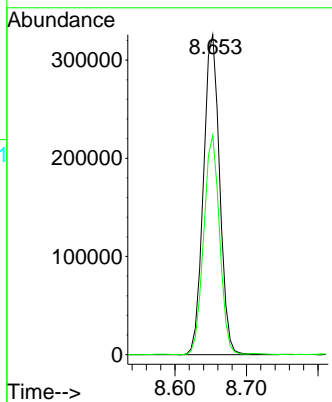
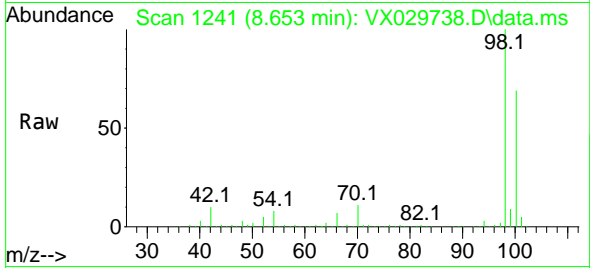




#50
 Toluene-d8
 Concen: 47.161 ug/l
 RT: 8.653 min Scan# 11
 Delta R.T. -0.000 min
 Lab File: VX029738.D
 Acq: 23 Jun 2022 12:58

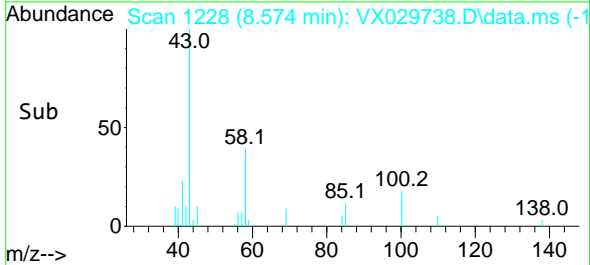
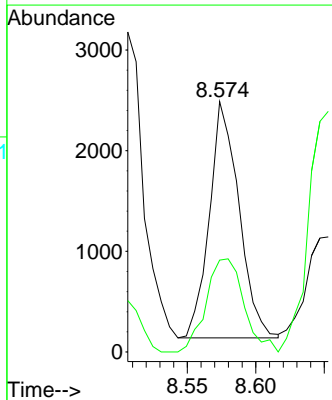
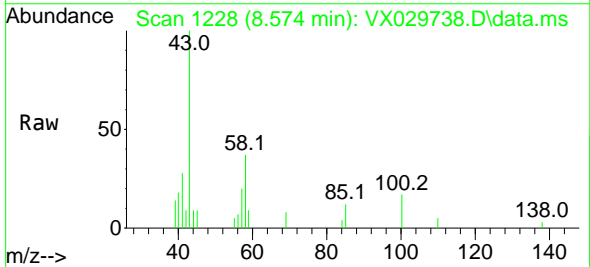
Instrument :
 MSVOA_X
 ClientSampleId :
 MW-28

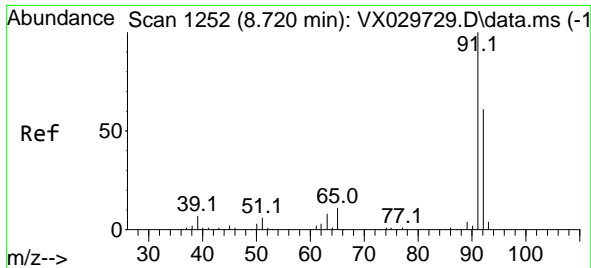
Tgt Ion: 98 Resp: 512522
 Ion Ratio Lower Upper
 98 100
 100 67.2 52.6 78.8



#51
 4-Methyl-2-Pentanone
 Concen: 0.851 ug/l
 RT: 8.574 min Scan# 1228
 Delta R.T. -0.000 min
 Lab File: VX029738.D
 Acq: 23 Jun 2022 12:58

Tgt Ion: 43 Resp: 3520
 Ion Ratio Lower Upper
 43 100
 58 50.2 36.1 54.1

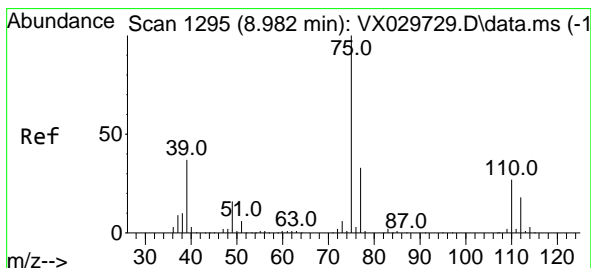
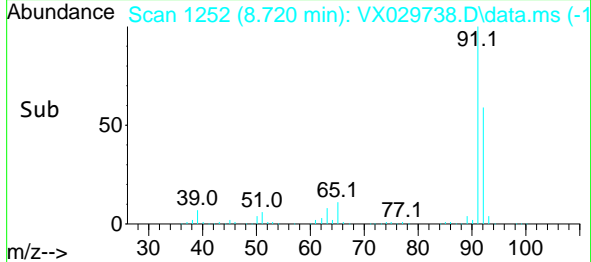
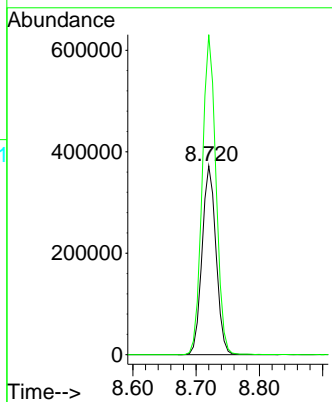
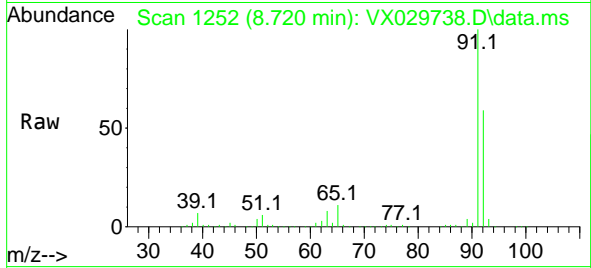




#52
 Toluene
 Concen: 74.746 ug/l
 RT: 8.720 min Scan# 11
 Delta R.T. -0.000 min
 Lab File: VX029738.D
 Acq: 23 Jun 2022 12:58

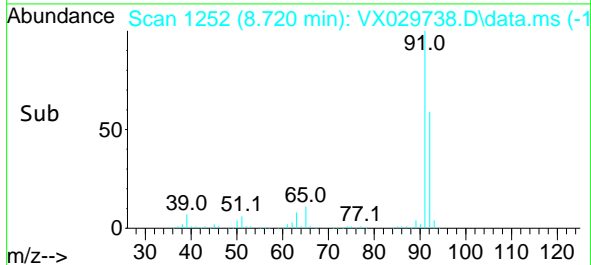
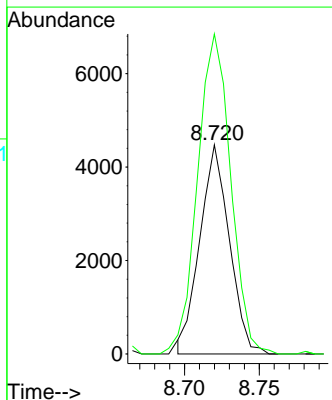
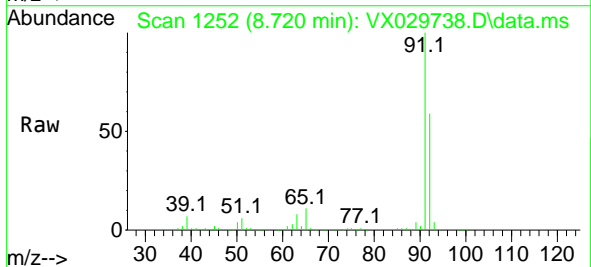
Instrument : MSVOA_X
 ClientSampleId : MW-28

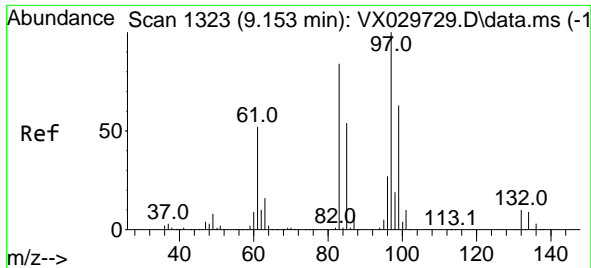
Tgt Ion: 92 Resp: 571223
 Ion Ratio Lower Upper
 92 100
 91 167.8 137.5 206.3



#53
 t-1,3-Dichloropropene
 Concen: 1.499 ug/l
 RT: 8.720 min Scan# 1252
 Delta R.T. -0.262 min
 Lab File: VX029738.D
 Acq: 23 Jun 2022 12:58

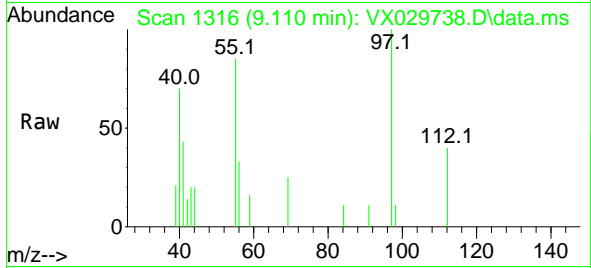
Tgt Ion: 75 Resp: 6139
 Ion Ratio Lower Upper
 75 100
 77 153.1 25.4 38.0#





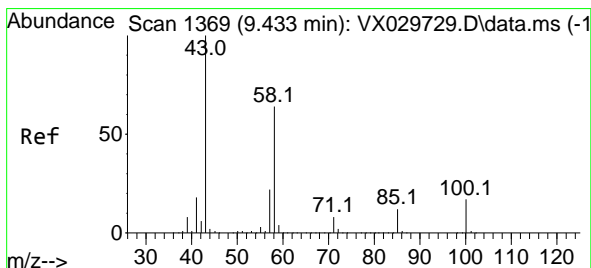
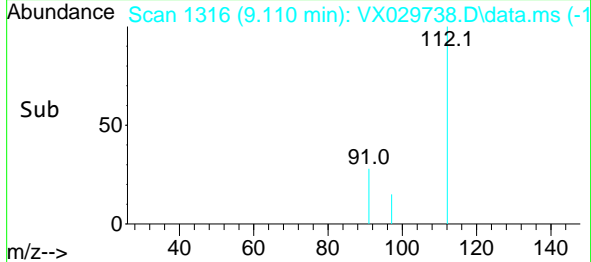
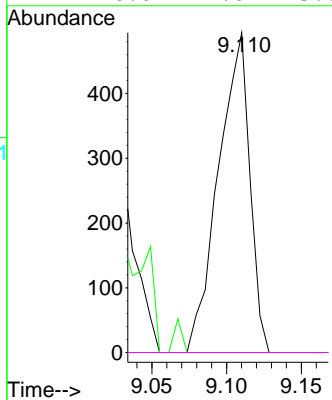
#55
 1,1,2-Trichloroethane
 Concen: 0.232 ug/l
 RT: 9.110 min Scan# 1316
 Delta R.T. -0.043 min
 Lab File: VX029738.D
 Acq: 23 Jun 2022 12:58

Instrument : MSVOA_X
 ClientSampleId : MW-28



Tgt Ion: 97 Resp: 716

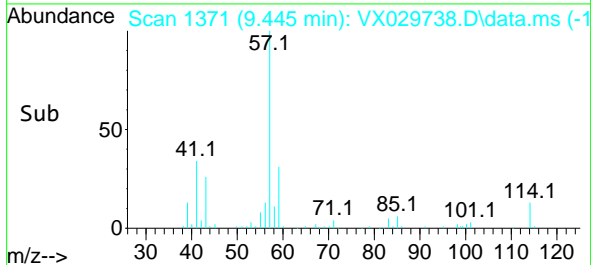
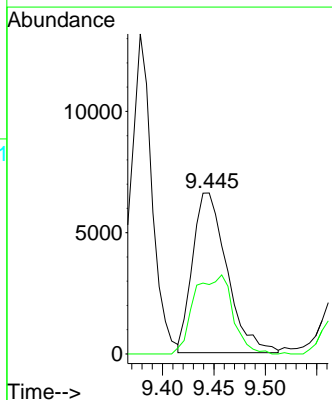
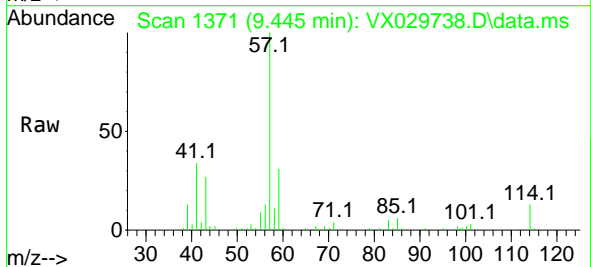
Ion	Ratio	Lower	Upper
97	100		
83	0.0	66.2	99.4#
85	0.0	42.9	64.3#
99	0.0	49.0	73.6#

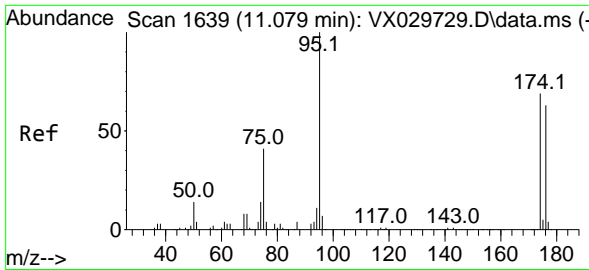


#59
 2-Hexanone
 Concen: 4.900 ug/l
 RT: 9.445 min Scan# 1371
 Delta R.T. 0.012 min
 Lab File: VX029738.D
 Acq: 23 Jun 2022 12:58

Tgt Ion: 43 Resp: 15347

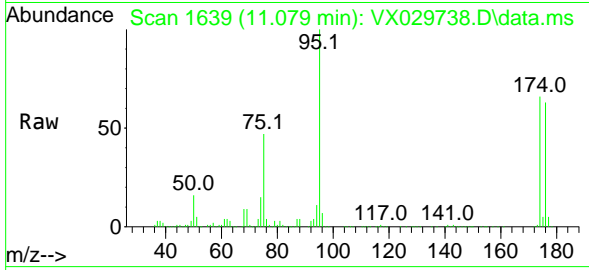
Ion	Ratio	Lower	Upper
43	100		
58	55.3	31.9	95.7



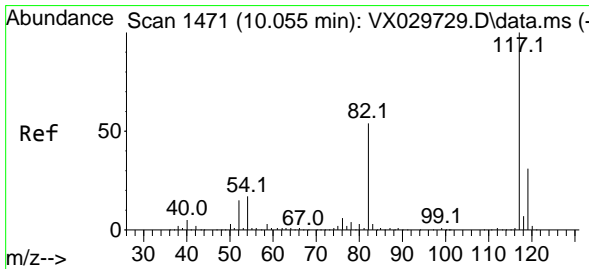
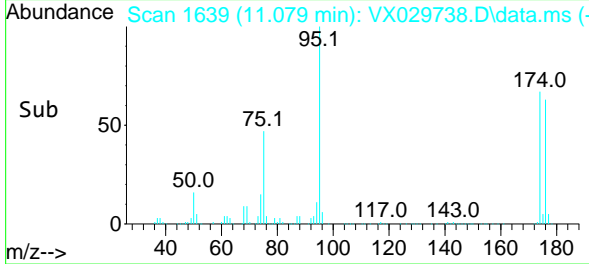
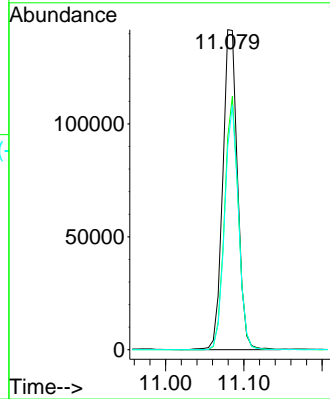


#62
 4-Bromofluorobenzene
 Concen: 45.578 ug/l
 RT: 11.079 min Scan# 1639
 Delta R.T. -0.006 min
 Lab File: VX029738.D
 Acq: 23 Jun 2022 12:58

Instrument : MSVOA_X
 ClientSampleId : MW-28

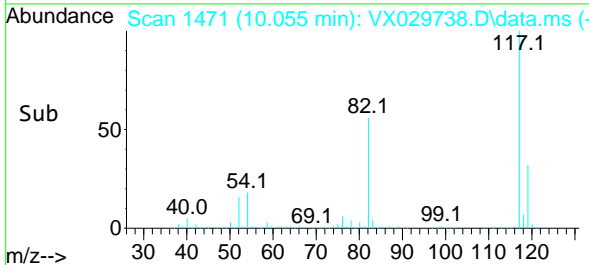
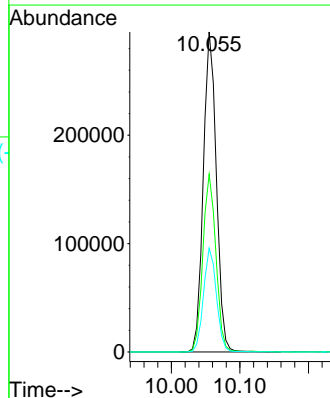
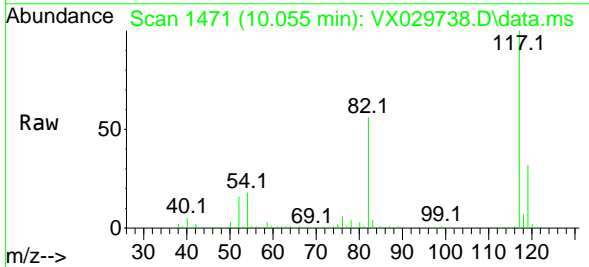


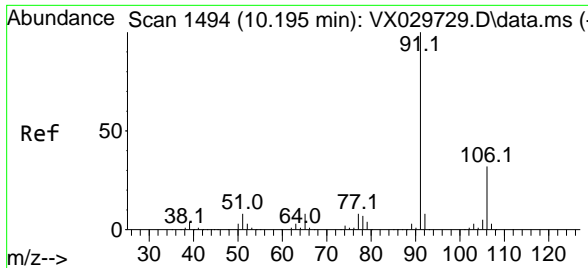
Tgt Ion: 95 Resp: 186788
 Ion Ratio Lower Upper
 95 100
 174 73.7 0.0 163.0
 176 71.7 0.0 155.0



#63
 Chlorobenzene-d5
 Concen: 50.000 ug/l
 RT: 10.055 min Scan# 1471
 Delta R.T. 0.000 min
 Lab File: VX029738.D
 Acq: 23 Jun 2022 12:58

Tgt Ion: 117 Resp: 392331
 Ion Ratio Lower Upper
 117 100
 82 55.5 41.8 62.8
 119 32.5 24.8 37.2

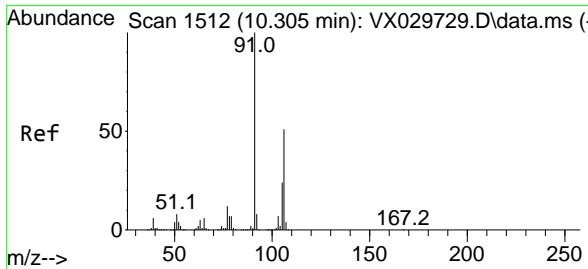
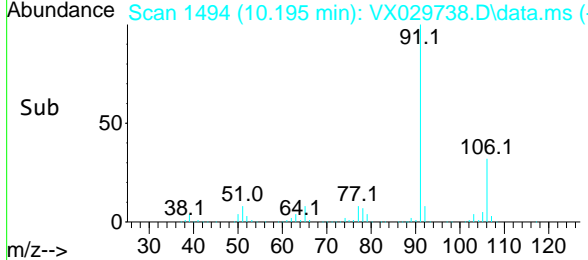
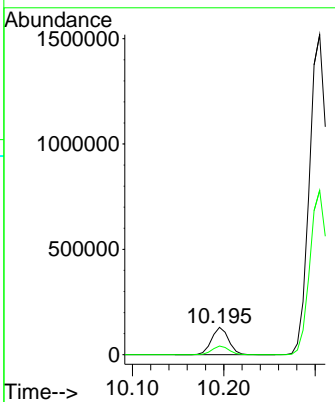
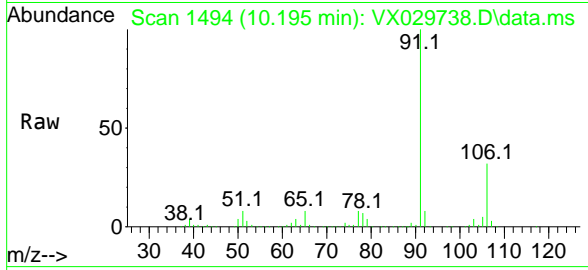




#67
 Ethyl Benzene
 Concen: 12.046 ug/l
 RT: 10.195 min Scan# 1494
 Delta R.T. 0.000 min
 Lab File: VX029738.D
 Acq: 23 Jun 2022 12:58

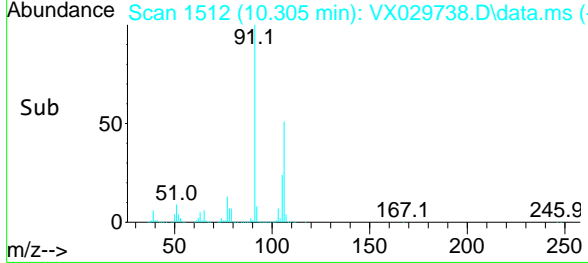
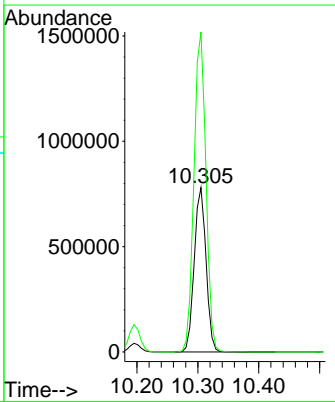
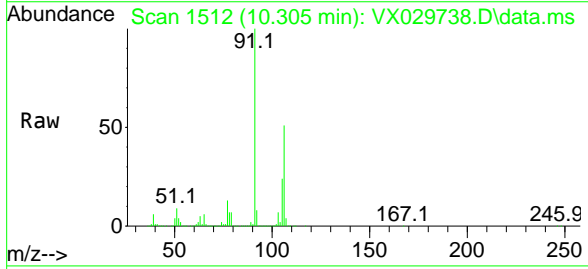
Instrument : MSVOA_X
 ClientSampleId : MW-28

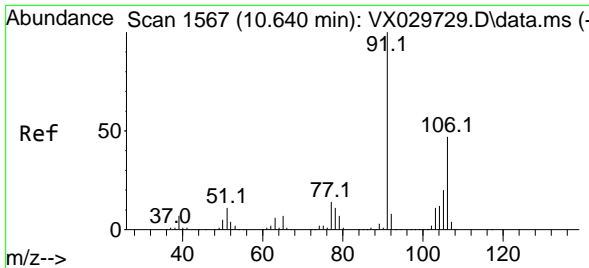
Tgt Ion: 91 Resp: 166813
 Ion Ratio Lower Upper
 91 100
 106 31.6 24.6 36.8



#68
 m/p-Xylenes
 Concen: 194.359 ug/l
 RT: 10.305 min Scan# 1512
 Delta R.T. 0.000 min
 Lab File: VX029738.D
 Acq: 23 Jun 2022 12:58

Tgt Ion: 106 Resp: 1049658
 Ion Ratio Lower Upper
 106 100
 91 197.6 160.4 240.6

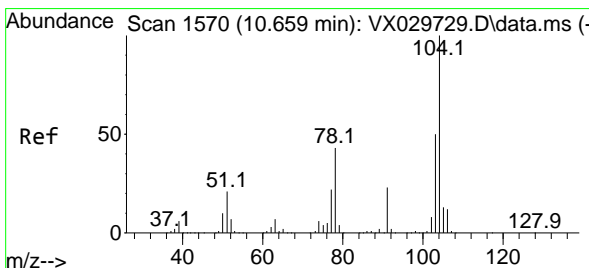
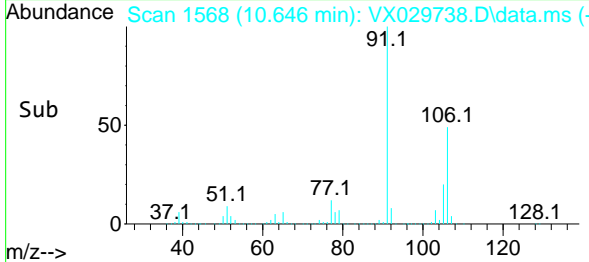
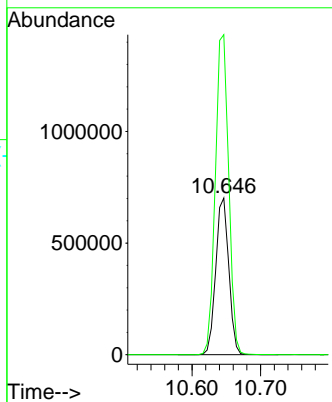
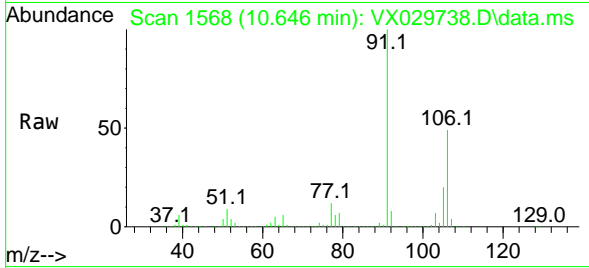




#69
 o-Xylene
 Concen: 172.801 ug/l
 RT: 10.646 min Scan# 1568
 Delta R.T. 0.000 min
 Lab File: VX029738.D
 Acq: 23 Jun 2022 12:58

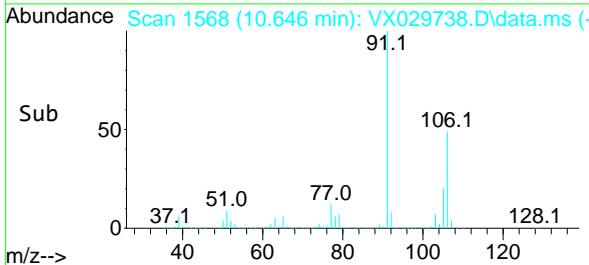
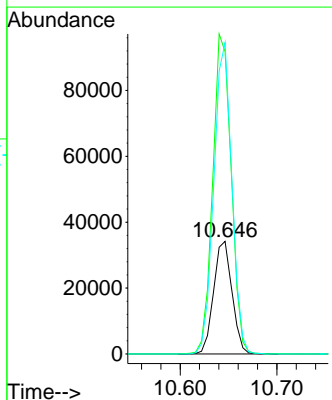
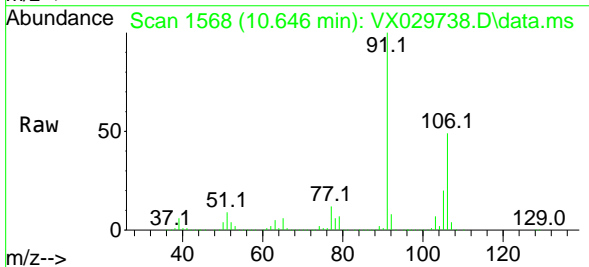
Instrument : MSVOA_X
 ClientSampleId : MW-28

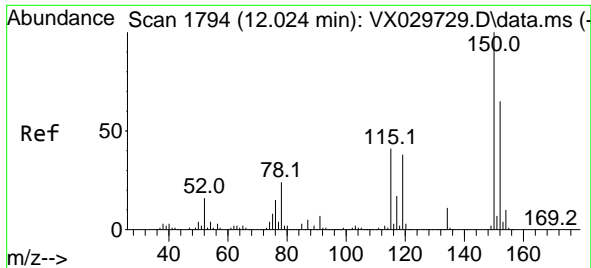
Tgt Ion:106 Resp: 922016
 Ion Ratio Lower Upper
 106 100
 91 209.8 106.1 318.1



#70
 Styrene
 Concen: 5.177 ug/l
 RT: 10.646 min Scan# 1568
 Delta R.T. -0.013 min
 Lab File: VX029738.D
 Acq: 23 Jun 2022 12:58

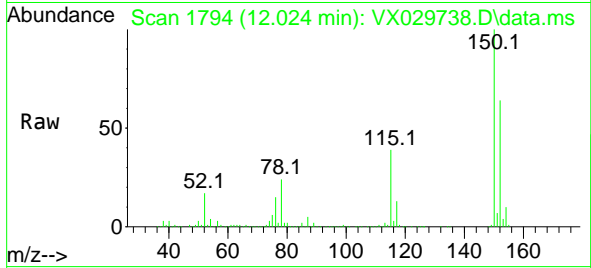
Tgt Ion:104 Resp: 45229
 Ion Ratio Lower Upper
 104 100
 78 284.2 38.6 57.8#
 103 270.7 43.8 65.8#



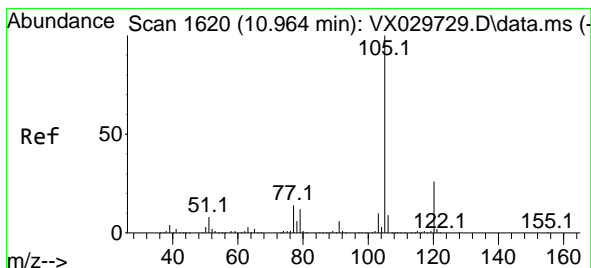
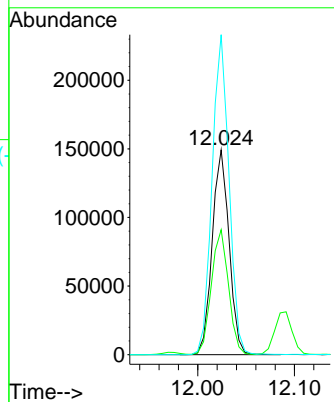
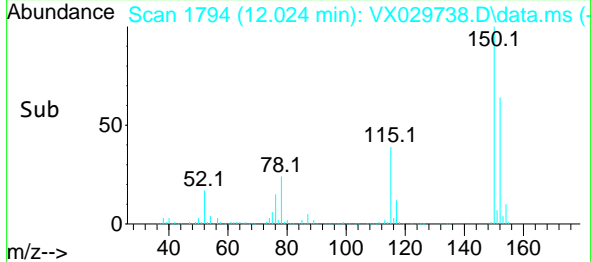


#72
 1,4-Dichlorobenzene-d4
 Concen: 50.000 ug/l
 RT: 12.024 min Scan# 11
 Delta R.T. 0.000 min
 Lab File: VX029738.D
 Acq: 23 Jun 2022 12:58

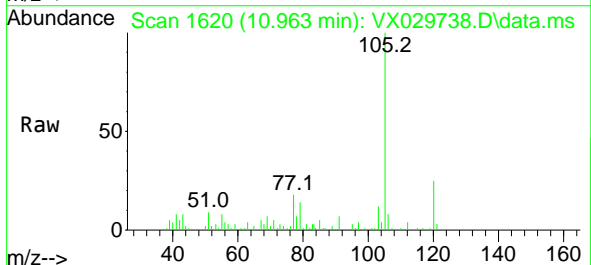
Instrument :
 MSVOA_X
 ClientSampleId :
 MW-28



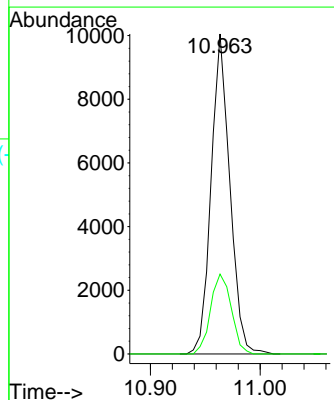
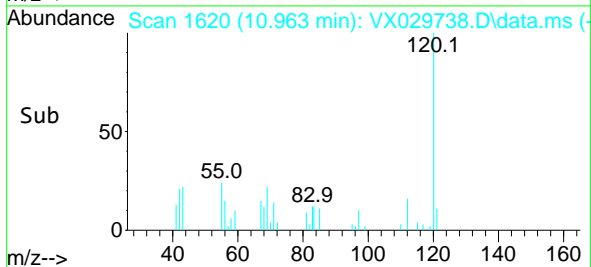
Tgt Ion:152 Resp: 180733
 Ion Ratio Lower Upper
 152 100
 115 61.7 37.5 112.7
 150 156.6 0.0 338.2

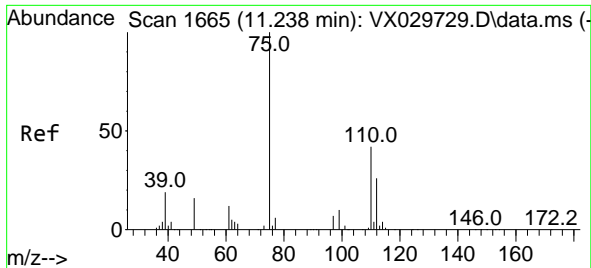


#73
 Isopropylbenzene
 Concen: 0.880 ug/l
 RT: 10.963 min Scan# 1620
 Delta R.T. 0.000 min
 Lab File: VX029738.D
 Acq: 23 Jun 2022 12:58



Tgt Ion:105 Resp: 11925
 Ion Ratio Lower Upper
 105 100
 120 27.6 13.5 40.5

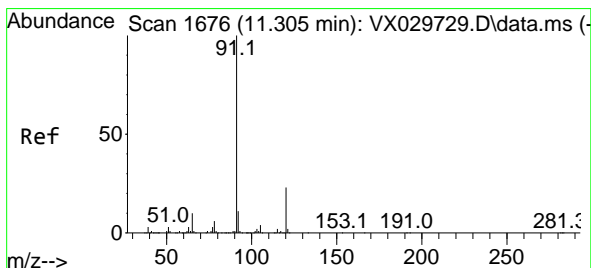
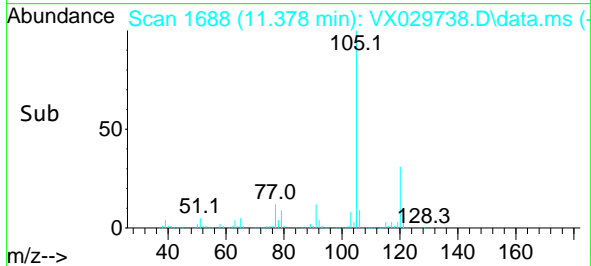
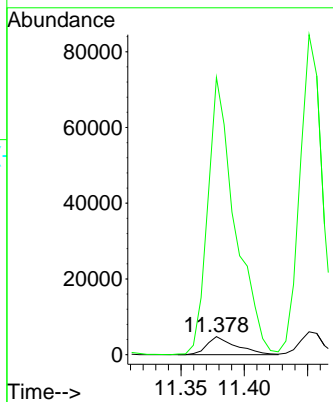
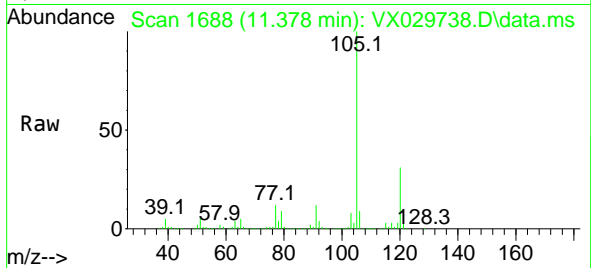




#76
 1,2,3-Trichloropropane
 Concen: 1.945 ug/l
 RT: 11.378 min Scan# 1688
 Delta R.T. 0.134 min
 Lab File: VX029738.D
 Acq: 23 Jun 2022 12:58

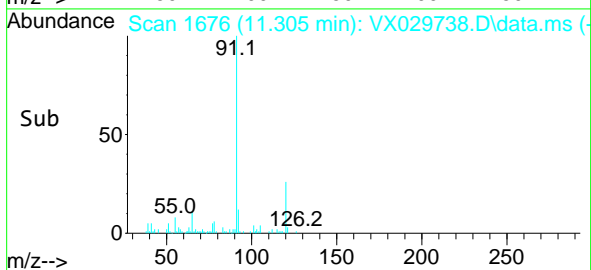
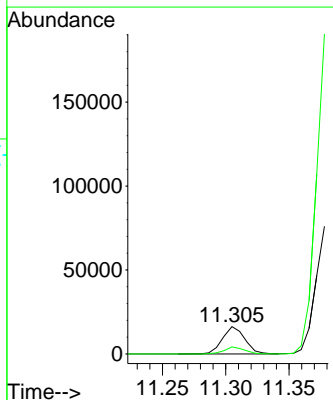
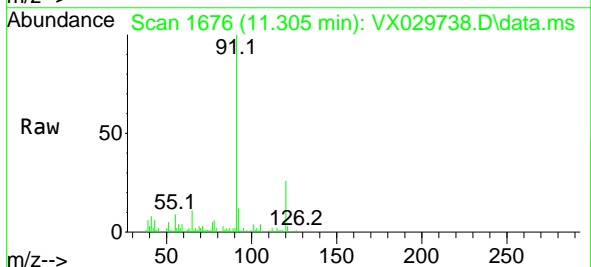
Instrument :
 MSVOA_X
 ClientSampleId :
 MW-28

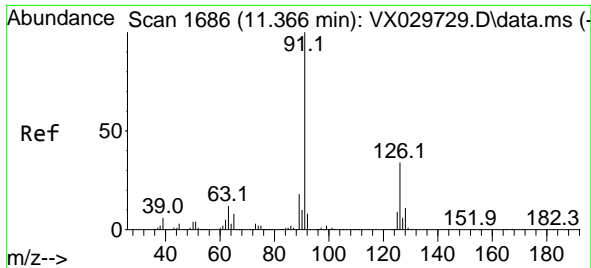
Tgt Ion: 75 Resp: 7658
 Ion Ratio Lower Upper
 75 100
 77 1441.1 19.4 58.2#



#78
 n-propylbenzene
 Concen: 1.308 ug/l
 RT: 11.305 min Scan# 1676
 Delta R.T. -0.000 min
 Lab File: VX029738.D
 Acq: 23 Jun 2022 12:58

Tgt Ion: 91 Resp: 19969
 Ion Ratio Lower Upper
 91 100
 120 0.0 11.6 34.8#

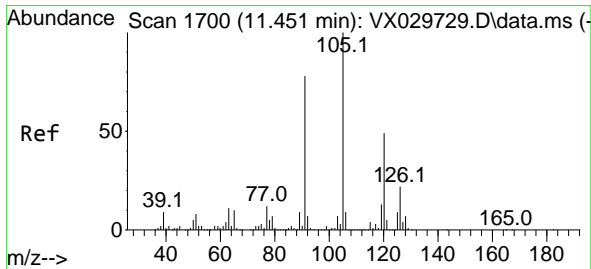
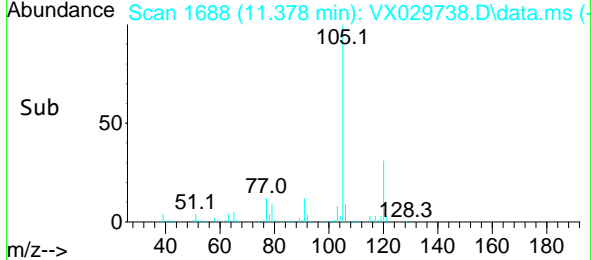
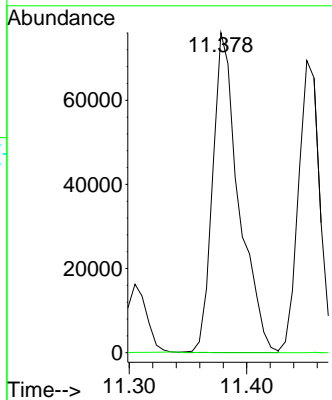
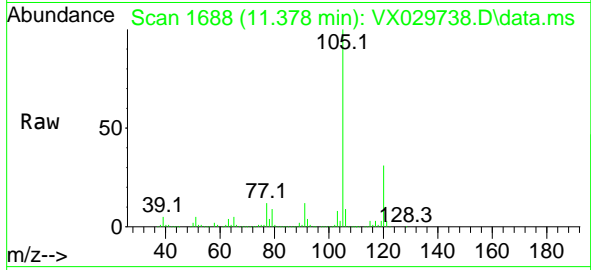




#79
 2-Chlorotoluene
 Concen: 12.465 ug/l
 RT: 11.378 min Scan# 11
 Delta R.T. 0.012 min
 Lab File: VX029738.D
 Acq: 23 Jun 2022 12:58

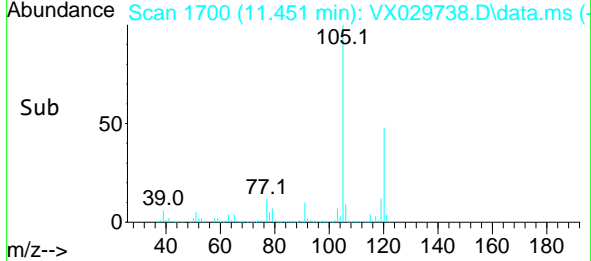
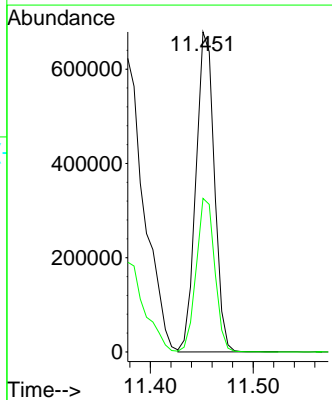
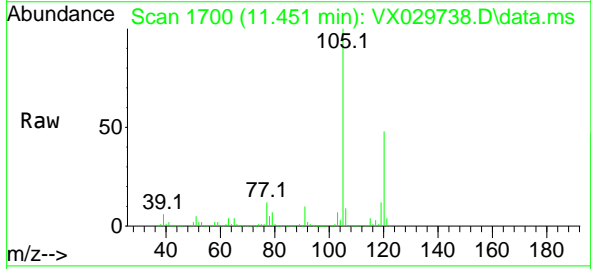
Instrument : MSVOA_X
 ClientSampleId : MW-28

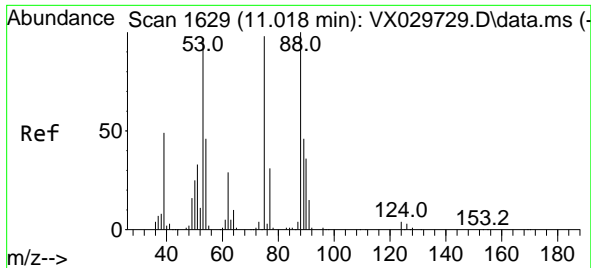
Tgt Ion: 91 Resp: 117801
 Ion Ratio Lower Upper
 91 100
 126 0.0 17.3 51.9#



#80
 1,3,5-Trimethylbenzene
 Concen: 74.226 ug/l
 RT: 11.451 min Scan# 1700
 Delta R.T. 0.000 min
 Lab File: VX029738.D
 Acq: 23 Jun 2022 12:58

Tgt Ion:105 Resp: 847093
 Ion Ratio Lower Upper
 105 100
 120 48.4 24.3 72.9

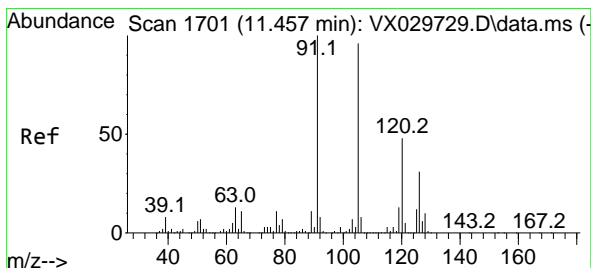
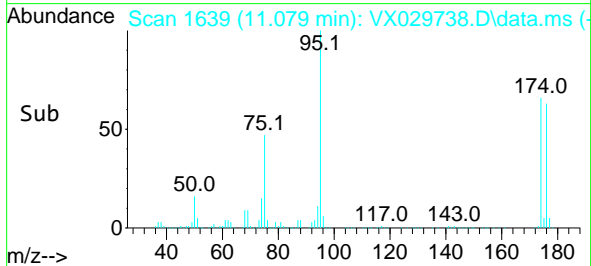
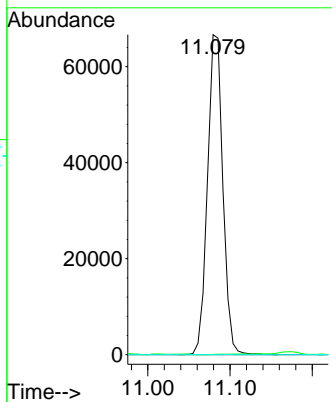
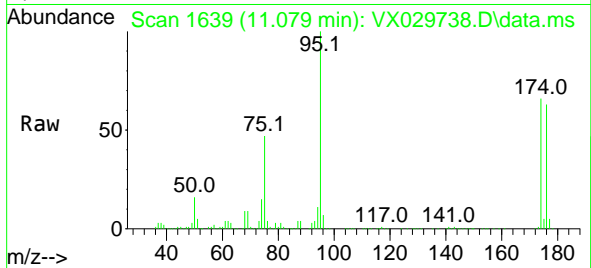




#81
 trans-1,4-Dichloro-2-butene
 Concen: 73.302 ug/l
 RT: 11.079 min Scan# 11
 Delta R.T. 0.061 min
 Lab File: VX029738.D
 Acq: 23 Jun 2022 12:58

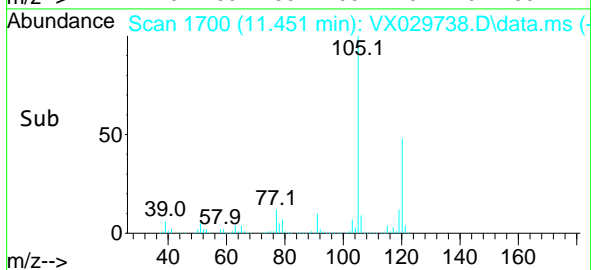
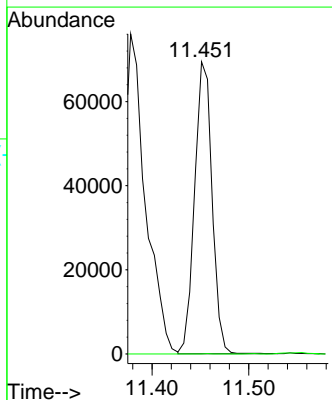
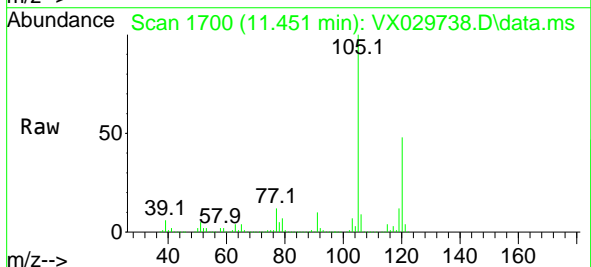
Instrument : MSVOA_X
 ClientSampleId : MW-28

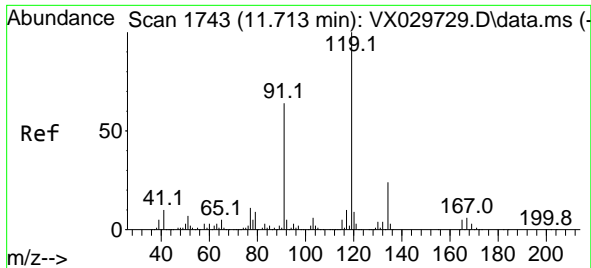
Tgt Ion: 75 Resp: 86754
 Ion Ratio Lower Upper
 75 100
 53 0.0 69.0 103.4#
 89 0.0 37.0 55.6#



#82
 4-Chlorotoluene
 Concen: 8.070 ug/l
 RT: 11.451 min Scan# 1700
 Delta R.T. -0.006 min
 Lab File: VX029738.D
 Acq: 23 Jun 2022 12:58

Tgt Ion: 91 Resp: 86970
 Ion Ratio Lower Upper
 91 100
 126 0.0 14.9 44.5#

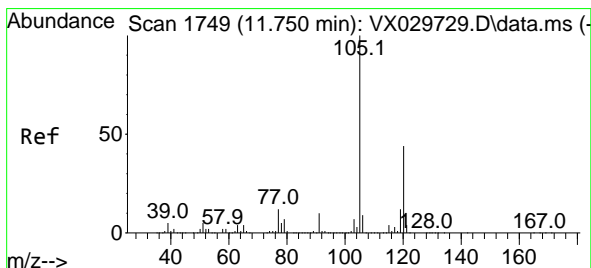
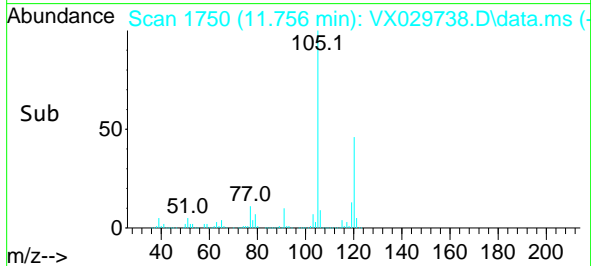
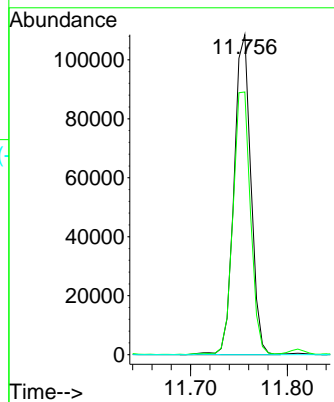
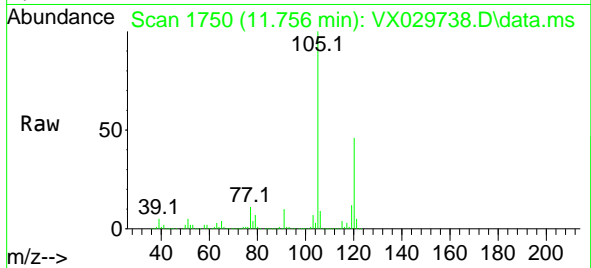




#83
 tert-Butylbenzene
 Concen: 11.835 ug/l
 RT: 11.756 min Scan# 1750
 Delta R.T. 0.037 min
 Lab File: VX029738.D
 Acq: 23 Jun 2022 12:58

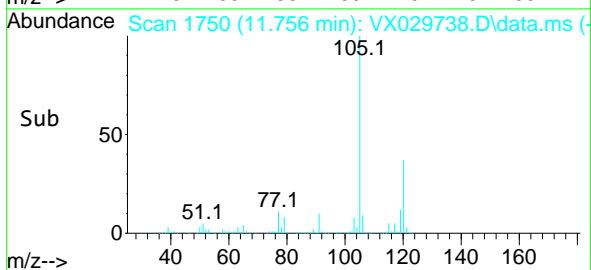
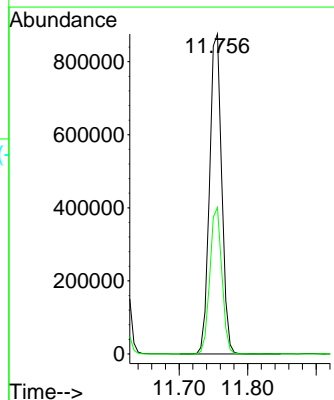
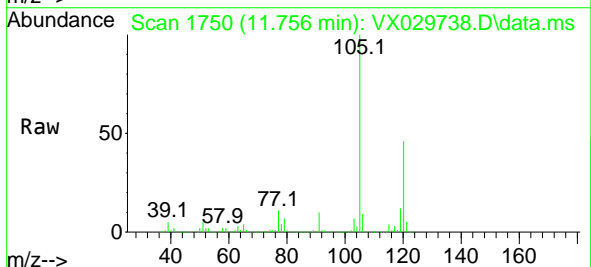
Instrument :
 MSVOA_X
 ClientSampleId :
 MW-28

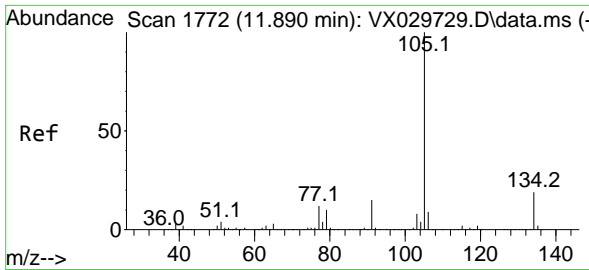
Tgt Ion:119 Resp: 131694
 Ion Ratio Lower Upper
 119 100
 91 85.1 26.9 80.6#
 134 0.0 11.4 34.2#



#84
 1,2,4-Trimethylbenzene
 Concen: 94.845 ug/l
 RT: 11.756 min Scan# 1750
 Delta R.T. -0.000 min
 Lab File: VX029738.D
 Acq: 23 Jun 2022 12:58

Tgt Ion:105 Resp: 1079532
 Ion Ratio Lower Upper
 105 100
 120 45.3 22.6 67.8

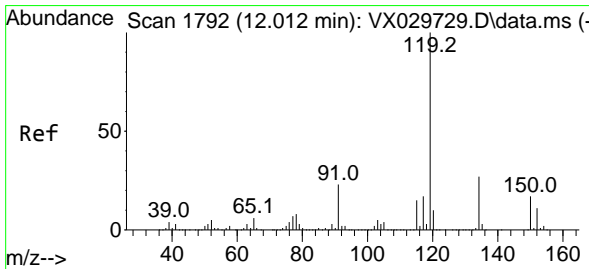
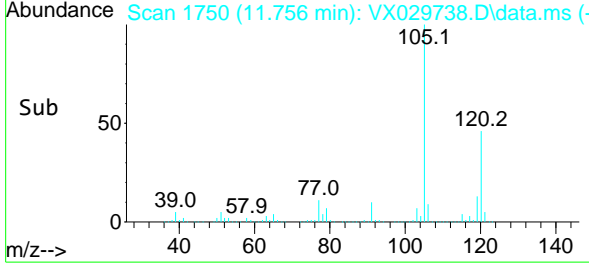
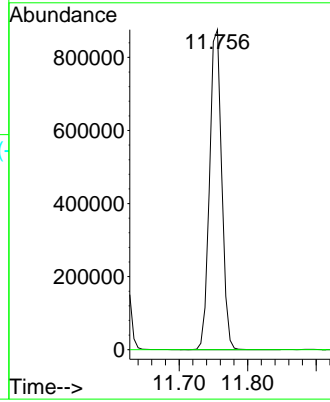
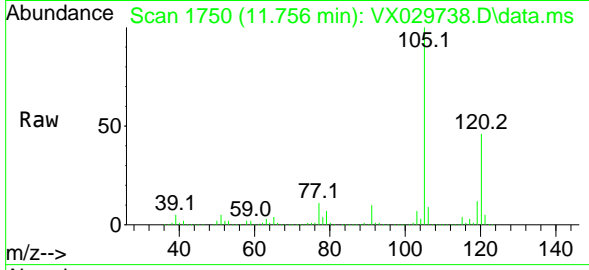




#85
 sec-Butylbenzene
 Concen: 78.281 ug/l
 RT: 11.756 min Scan# 1750
 Delta R.T. -0.134 min
 Lab File: VX029738.D
 Acq: 23 Jun 2022 12:58

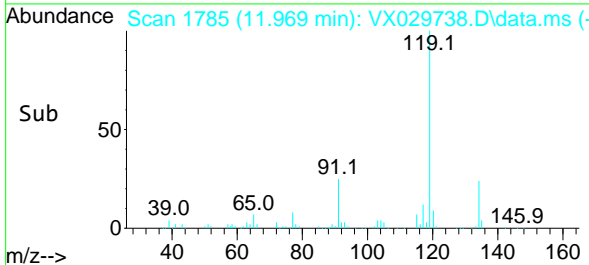
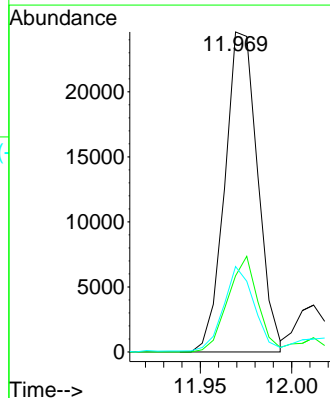
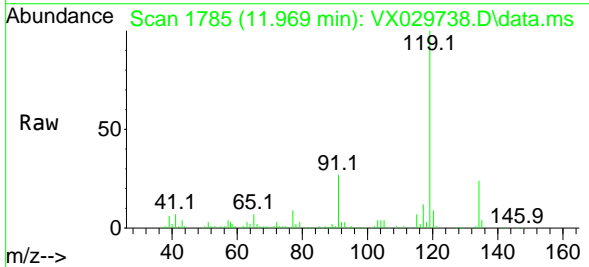
Instrument : MSVOA_X
 ClientSampleId : MW-28

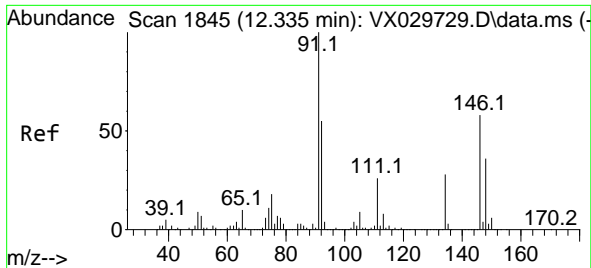
Tgt Ion:105 Resp: 1079532
 Ion Ratio Lower Upper
 105 100
 134 0.0 10.2 30.4#



#86
 p-Isopropyltoluene
 Concen: 2.663 ug/l
 RT: 11.969 min Scan# 1785
 Delta R.T. -0.043 min
 Lab File: VX029738.D
 Acq: 23 Jun 2022 12:58

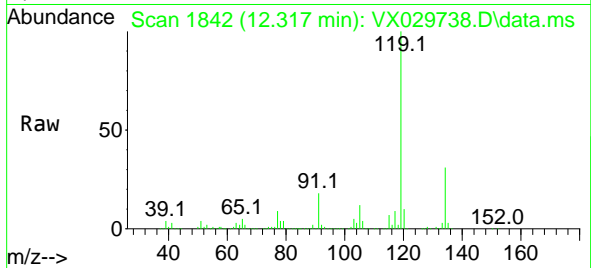
Tgt Ion:119 Resp: 30751
 Ion Ratio Lower Upper
 119 100
 134 27.3 13.0 39.0
 91 24.5 11.3 33.9



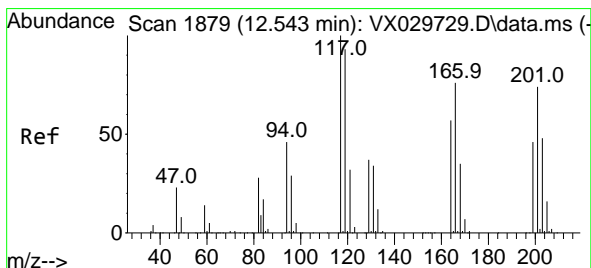
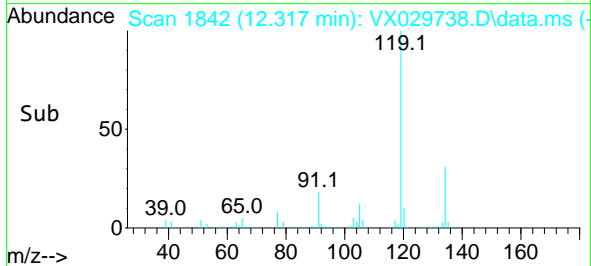
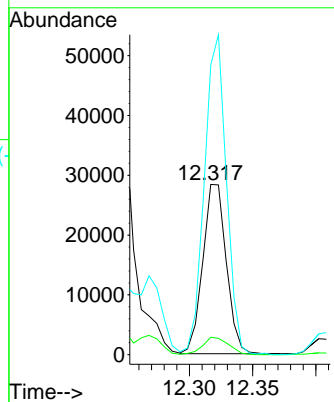


#89
 n-Butylbenzene
 Concen: 3.768 ug/l
 RT: 12.317 min Scan# 1842
 Delta R.T. -0.018 min
 Lab File: VX029738.D
 Acq: 23 Jun 2022 12:58

Instrument :
 MSVOA_X
 ClientSampleId :
 MW-28

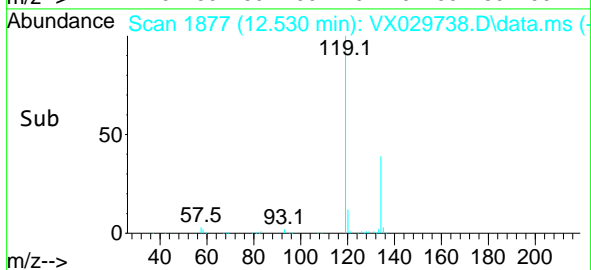
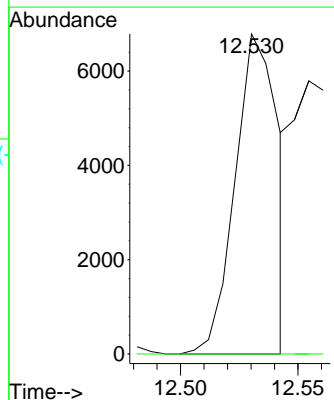
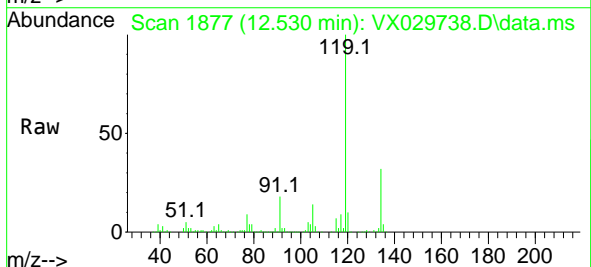


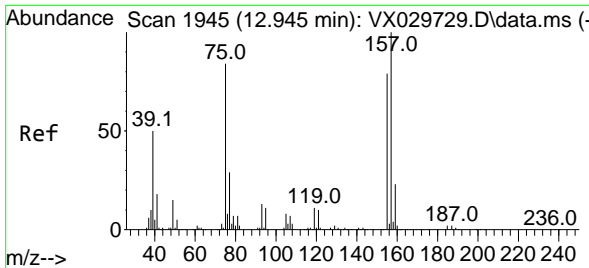
Tgt Ion: 91 Resp: 36719
 Ion Ratio Lower Upper
 91 100
 92 11.4 27.8 83.3#
 134 176.5 13.3 39.8#



#90
 Hexachloroethane
 Concen: 5.222 ug/l
 RT: 12.530 min Scan# 1877
 Delta R.T. -0.012 min
 Lab File: VX029738.D
 Acq: 23 Jun 2022 12:58

Tgt Ion: 117 Resp: 8634
 Ion Ratio Lower Upper
 117 100
 201 0.0 39.5 118.5#



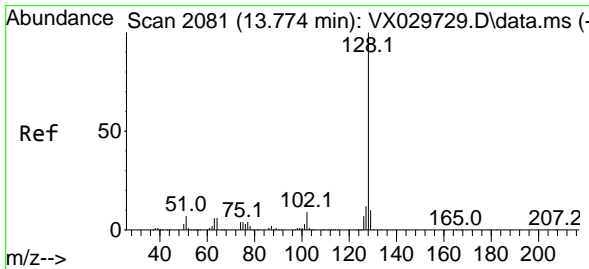
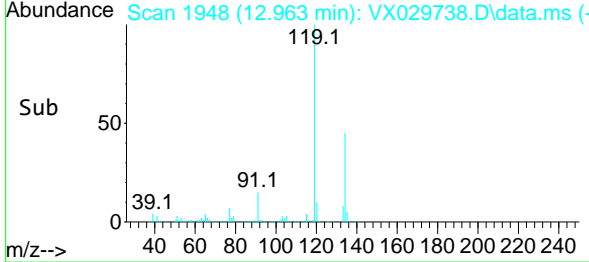
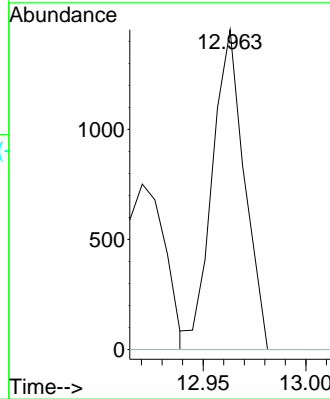
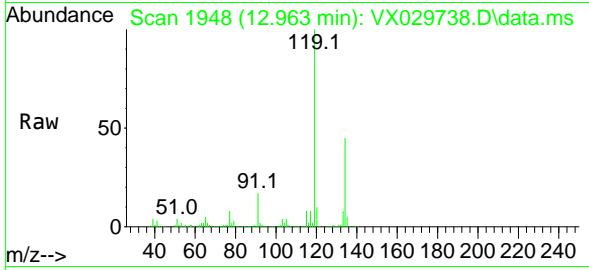


#92
 1,2-Dibromo-3-Chloropropane
 Concen: 1.620 ug/l
 RT: 12.963 min Scan# 1948
 Delta R.T. 0.018 min
 Lab File: VX029738.D
 Acq: 23 Jun 2022 12:58

Instrument : MSVOA_X
 ClientSampleId : MW-28

Tgt Ion: 75 Resp: 1573

Ion	Ratio	Lower	Upper
75	100		
155	0.0	47.0	141.2#
157	0.0	57.9	173.6#



#95
 Naphthalene
 Concen: 12.449 ug/l
 RT: 13.774 min Scan# 2081
 Delta R.T. -0.000 min
 Lab File: VX029738.D
 Acq: 23 Jun 2022 12:58

Tgt Ion: 128 Resp: 157819

Ion	Ratio	Lower	Upper
128	100		
127	12.7	10.2	15.4
129	11.8	8.7	13.1

