

Data Path : Z:\voasrv\HPCHEM1\MSVOA_X\Data\VX062322\
 Data File : VX029738.D
 Acq On : 23 Jun 2022 12:58
 Operator : JC/MD
 Sample : N3202-06 10X
 Misc : 5.0mL/MSVOA_X/WATER
 ALS Vial : 9 Sample Multiplier: 1

Instrument :
 MSVOA_X
 ClientSampleId :
 MW-28

Integration Parameters: RTEINT.P

Integrator: RTE
 Smoothing : ON
 Sampling : 1
 Start Thrs : 0.2
 Stop Thrs : 0

Filtering: 5
 Min Area: 3 % of largest Peak
 Max Peaks: 100
 Peak Location: TOP

If leading or trailing edge < 100 prefer < Baseline drop else tangent >
 Peak separation: 5

Method : Z:\voasrv\HPCHEM1\MSVOA_X\Method\82X061822W.M
 Title : SW846 8260

Signal : TIC: VX029738.D\data.ms

peak #	R.T. min	first scan	max scan	last scan	PK TY	peak height	corr. area	corr. % max.	% of total
1	2.745	262	272	282	rBV	29876	67492	1.17%	0.158%
2	2.959	297	307	317	rVB2	78432	197546	3.44%	0.463%
3	3.111	323	332	345	rVB	165582	386736	6.73%	0.906%
4	5.391	693	706	716	rBV	145857	428459	7.46%	1.004%
5	5.556	724	733	755	rVB2	273675	792802	13.80%	1.857%
6	5.958	788	799	806	rBV	156779	408705	7.11%	0.957%
7	6.044	806	813	825	rVB	179697	473464	8.24%	1.109%
8	6.233	827	844	857	rBV3	110740	363039	6.32%	0.850%
9	6.763	922	931	942	rBV	418933	993666	17.30%	2.327%
10	8.147	1144	1158	1163	rBV	38333	78767	1.37%	0.184%
11	8.507	1211	1217	1225	rBV	56050	93593	1.63%	0.219%
12	8.653	1234	1241	1246	rBV	833173	1300603	22.64%	3.046%
13	8.720	1246	1252	1262	rVB	1452065	2210883	38.48%	5.178%
14	8.842	1268	1272	1281	rVB	60811	95068	1.65%	0.223%
15	9.458	1365	1373	1385	rVV	136816	236887	4.12%	0.555%
16	10.055	1460	1471	1476	rBV	846067	1215778	21.16%	2.848%
17	10.147	1482	1486	1490	rVB	57225	66848	1.16%	0.157%
18	10.195	1490	1494	1500	rBV	280907	384634	6.69%	0.901%
19	10.305	1506	1512	1518	rVB	4237582	5745251	100.00%	13.457%
20	10.646	1562	1568	1578	rVB	3896920	5238102	91.17%	12.269%
21	10.963	1613	1620	1626	rVB2	31423	59513	1.04%	0.139%
22	11.085	1634	1640	1645	rBV	643112	832155	14.48%	1.949%
23	11.171	1649	1654	1660	rVB3	48807	81878	1.43%	0.192%
24	11.378	1681	1688	1696	rVV	1530575	2413459	42.01%	5.653%
25	11.451	1696	1700	1706	rVB	1860707	2310635	40.22%	5.412%
26	11.616	1721	1727	1734	rBV	1633973	2035082	35.42%	4.767%
27	11.756	1745	1750	1755	rVB	2328194	2886723	50.25%	6.761%
28	11.969	1781	1785	1789	rBV	68591	85272	1.48%	0.200%
29	12.024	1789	1794	1799	rVV	844660	1049923	18.27%	2.459%
30	12.085	1799	1804	1812	rBV	2138190	2691103	46.84%	6.303%
31	12.244	1823	1830	1838	rBV2	951552	1315915	22.90%	3.082%
32	12.323	1838	1843	1851	rVV	446810	562946	9.80%	1.319%
33	12.408	1853	1857	1862	rVV2	70468	94655	1.65%	0.222%
34	12.463	1862	1866	1872	rVB	111644	135427	2.36%	0.317%
35	12.530	1872	1877	1879	rBV	210939	263521	4.59%	0.617%
36	12.555	1879	1881	1886	rVB	191709	212143	3.69%	0.497%

Data Path : Z:\voasrv\HPCHEM1\MSVOA_X\Data\VX062322\
 Data File : VX029738.D
 Acq On : 23 Jun 2022 12:58
 Operator : JC/MD
 Sample : N3202-06 10X
 Misc : 5.0mL/MSVOA_X/WATER
 ALS Vial : 9 Sample Multiplier: 1

Instrument :
 MSVOA_X
 ClientSampleId :
 MW-28

Integration Parameters: RTEINT.P

Integrator: RTE
 Smoothing : ON Filtering: 5
 Sampling : 1 Min Area: 3 % of largest Peak
 Start Thrs: 0.2 Max Peaks: 100
 Stop Thrs : 0 Peak Location: TOP

If leading or trailing edge < 100 prefer < Baseline drop else tangent >
 Peak separation: 5

Method : Z:\voasrv\HPCHEM1\MSVOA_X\Method\82X061822W.M
 Title : SW846 8260

37	12.616	1886	1891	1894	rBV	510149	601375	10.47%	1.409%
38	12.646	1894	1896	1900	rVV	70683	77738	1.35%	0.182%
39	12.701	1900	1905	1912	rVB2	331388	460245	8.01%	1.078%
40	12.847	1925	1929	1936	rVB	182038	223404	3.89%	0.523%
41	12.920	1936	1941	1945	rBV	366938	450143	7.84%	1.054%
42	12.963	1945	1948	1954	rVB	553917	637967	11.10%	1.494%
43	13.048	1954	1962	1964	rBV4	32937	63392	1.10%	0.148%
44	13.170	1978	1982	1987	rVB	208743	230387	4.01%	0.540%
45	13.292	1997	2002	2008	rVB2	725321	944273	16.44%	2.212%
46	13.426	2019	2024	2031	rVB	111848	148773	2.59%	0.348%
47	13.542	2040	2043	2046	rBV	65467	86073	1.50%	0.202%
48	13.585	2046	2050	2056	rVV3	79762	146875	2.56%	0.344%
49	13.664	2060	2063	2069	rVB2	84121	125543	2.19%	0.294%
50	13.774	2075	2081	2088	rBV	245866	326334	5.68%	0.764%
51	14.079	2126	2131	2136	rBV	48426	64343	1.12%	0.151%
52	14.213	2148	2153	2159	rBV	49189	81794	1.42%	0.192%
53	14.640	2218	2223	2228	rVB	91047	111330	1.94%	0.261%
54	14.780	2241	2246	2255	rVB	80587	105509	1.84%	0.247%

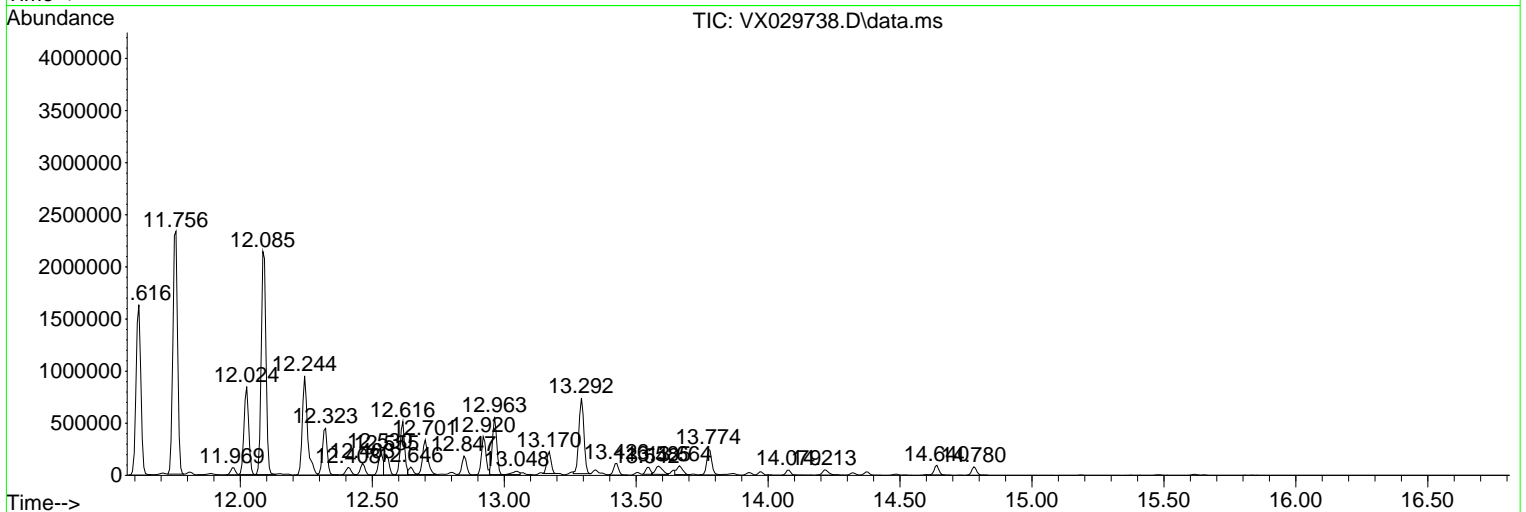
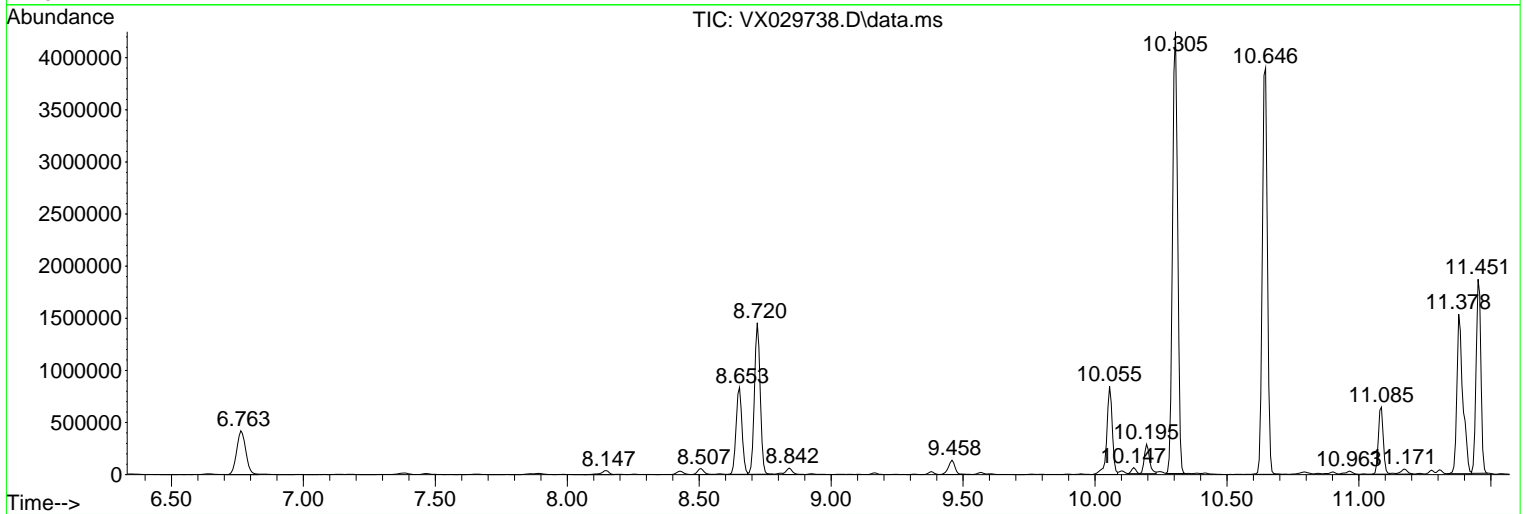
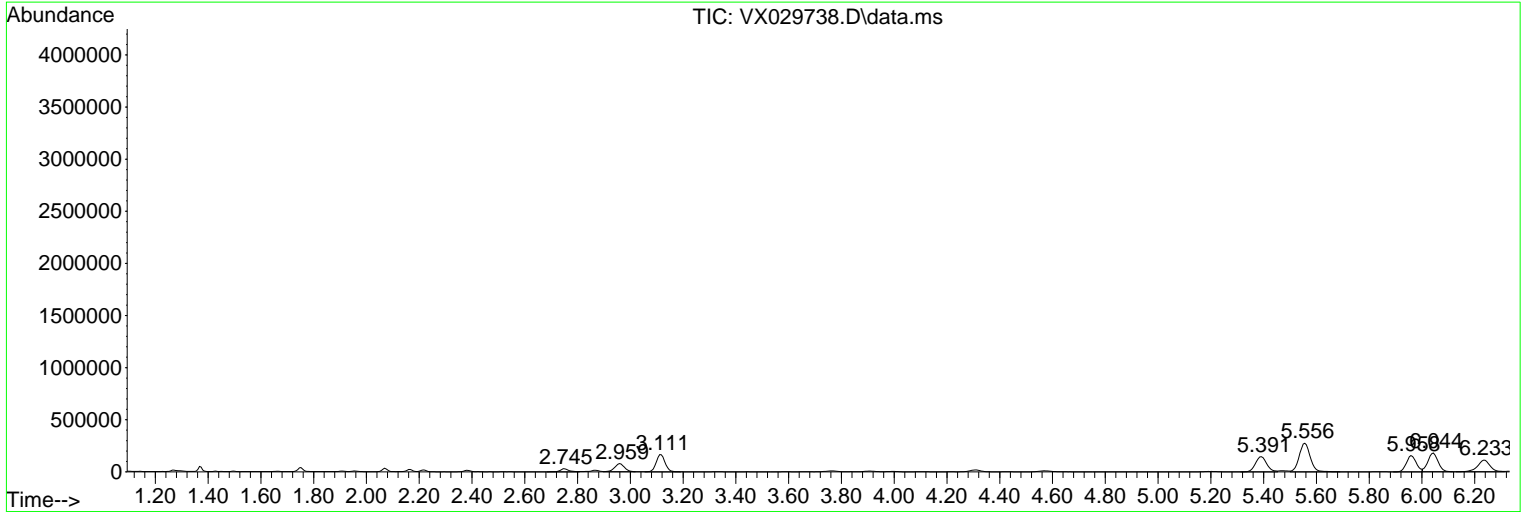
Sum of corrected areas: 42694171

Data Path : Z:\voasrv\HPCHEM1\MSVOA_X\Data\VX062322\
 Data File : VX029738.D
 Acq On : 23 Jun 2022 12:58
 Operator : JC/MD
 Sample : N3202-06 10X
 Misc : 5.0mL/MSVOA_X/WATER
 ALS Vial : 9 Sample Multiplier: 1

Instrument :
 MSVOA_X
 ClientSampleId :
 MW-28

Quant Method : Z:\voasrv\HPCHEM1\MSVOA_X\Method\82X061822W.M
 Quant Title : SW846 8260

TIC Library : C:\Database\NIST20.L
 TIC Integration Parameters: LSCINT.P



Data Path : Z:\voasrv\HPCHEM1\MSVOA_X\Data\VX062322\
 Data File : VX029738.D
 Acq On : 23 Jun 2022 12:58
 Operator : JC/MD
 Sample : N3202-06 10X
 Misc : 5.0mL/MSVOA_X/WATER
 ALS Vial : 9 Sample Multiplier: 1

Instrument :
 MSVOA_X
 ClientSampleId :
 MW-28

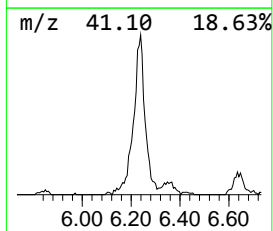
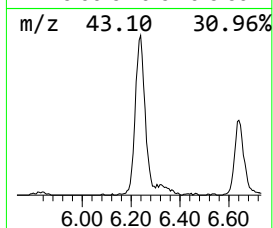
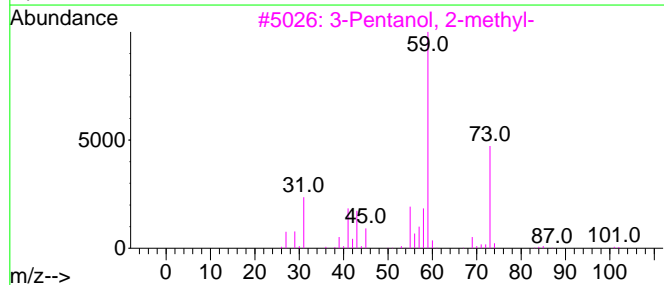
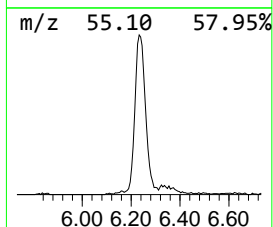
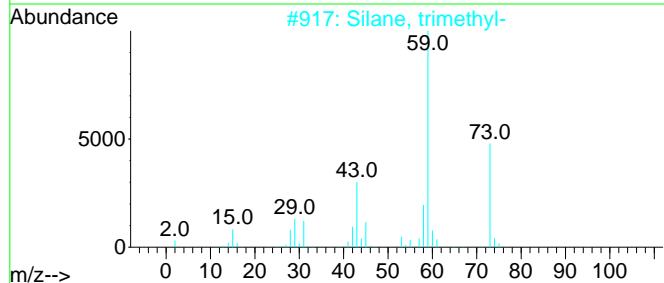
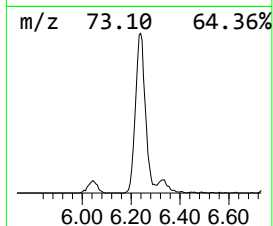
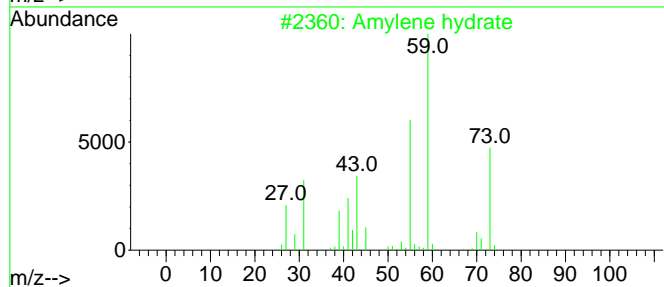
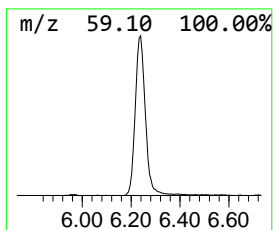
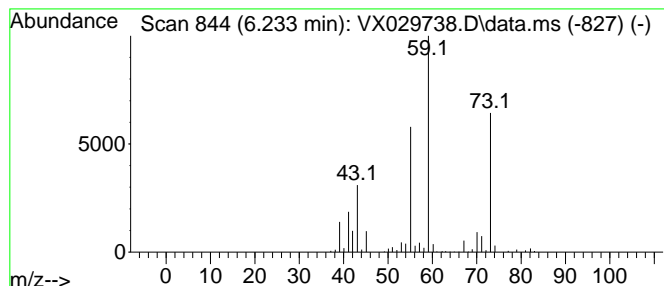
Quant Method : Z:\voasrv\HPCHEM1\MSVOA_X\Method\82X061822W.M
 Quant Title : SW846 8260

TIC Library : C:\Database\NIST0.L
 TIC Integration Parameters: LSCINT.P

 Peak Number 1 Amylene hydrate Concentration Rank 10

R.T.	EstConc	Area	Relative to ISTD	R.T.
6.233	18.27 ug/l	363039	1,4-Difluorobenzene	6.763

Hit#	of 5	Tentative ID	MW	MolForm	CAS#	Qual
1		Amylene hydrate	88	C5H12O	000075-85-4	83
2		Silane, trimethyl-	74	C3H10Si	000993-07-7	39
3		3-Pentanol, 2-methyl-	102	C6H14O	000565-67-3	38
4		Methane, isothiocyanato-	73	C2H3NS	000556-61-6	10
5		1-Hepten-4-ol	114	C7H14O	003521-91-3	10



Data Path : Z:\voasrv\HPCHEM1\MSVOA_X\Data\VX062322\
 Data File : VX029738.D
 Acq On : 23 Jun 2022 12:58
 Operator : JC/MD
 Sample : N3202-06 10X
 Misc : 5.0mL/MSVOA_X/WATER
 ALS Vial : 9 Sample Multiplier: 1

Instrument :
 MSVOA_X
 ClientSampleId :
 MW-28

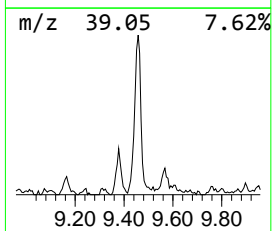
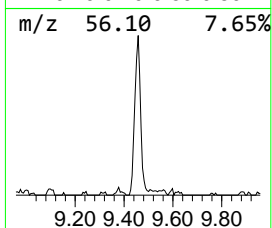
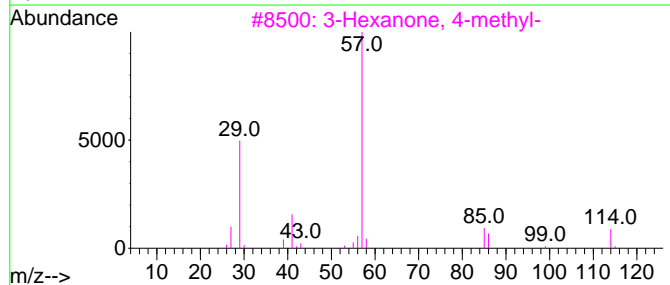
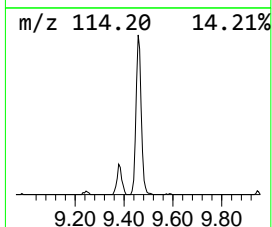
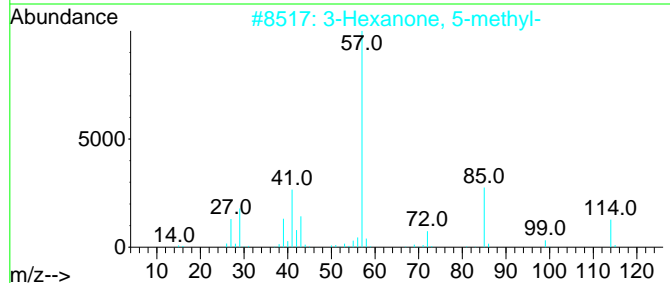
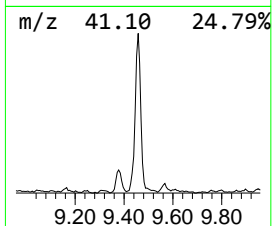
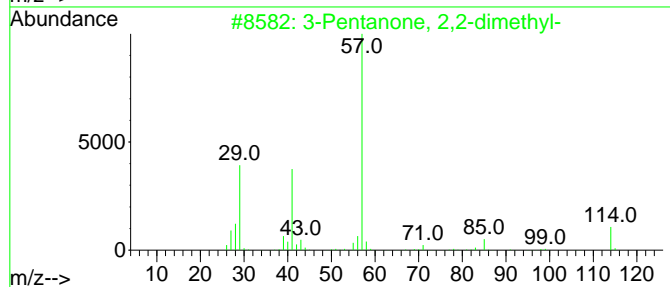
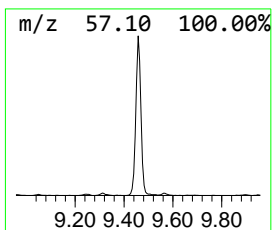
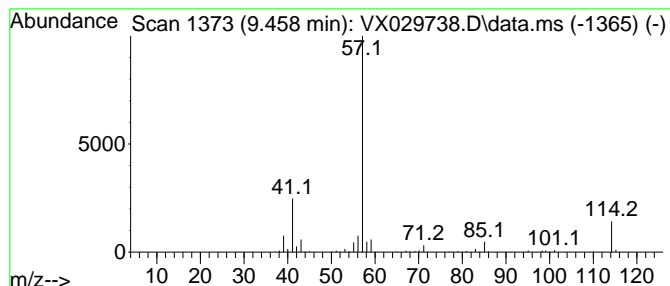
Quant Method : Z:\voasrv\HPCHEM1\MSVOA_X\Method\82X061822W.M
 Quant Title : SW846 8260

TIC Library : C:\Database\NIST20.L
 TIC Integration Parameters: LSCINT.P

 Peak Number 2 3-Pentanone, 2,2-dimethyl- Concentration Rank 15

R.T.	EstConc	Area	Relative to ISTD	R.T.
9.458	9.74 ug/l	236887	Chlorobenzene-d5	10.055

Hit#	of 5	Tentative ID	MW	MolForm	CAS#	Qual
1		3-Pentanone, 2,2-dimethyl-	114	C7H14O	000564-04-5	72
2		3-Hexanone, 5-methyl-	114	C7H14O	000623-56-3	53
3		3-Hexanone, 4-methyl-	114	C7H14O	017042-16-9	53
4		3,4-Hexanedione	114	C6H10O2	004437-51-8	52
5		3-Heptanone	114	C7H14O	000106-35-4	47



Data Path : Z:\voasrv\HPCHEM1\MSVOA_X\Data\VX062322\
 Data File : VX029738.D
 Acq On : 23 Jun 2022 12:58
 Operator : JC/MD
 Sample : N3202-06 10X
 Misc : 5.0mL/MSVOA_X/WATER
 ALS Vial : 9 Sample Multiplier: 1

Instrument :
 MSVOA_X
 ClientSampleId :
 MW-28

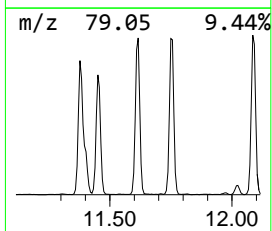
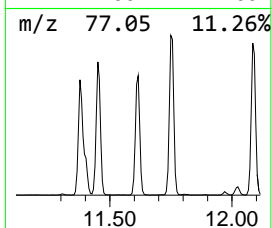
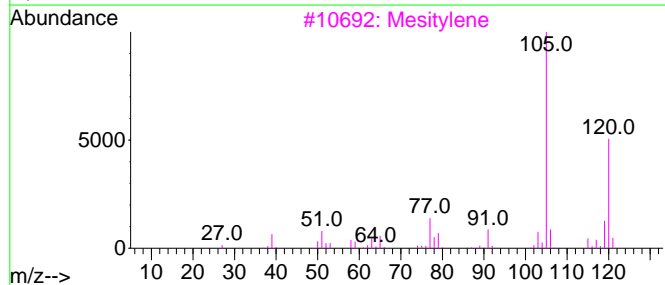
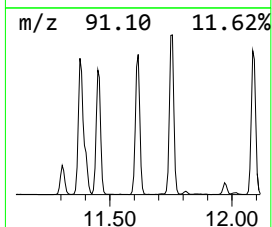
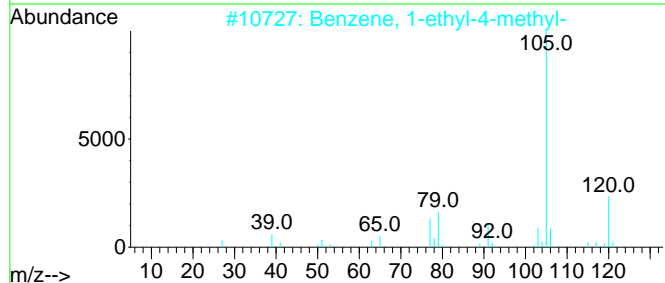
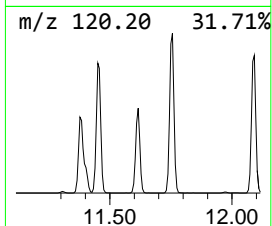
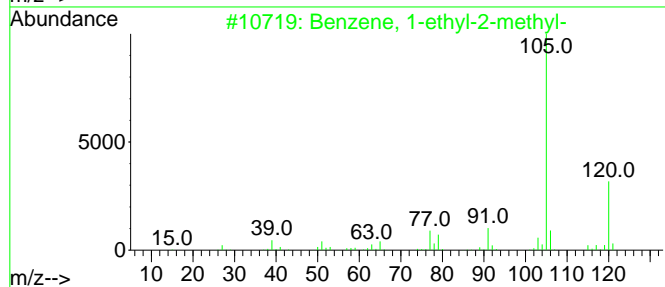
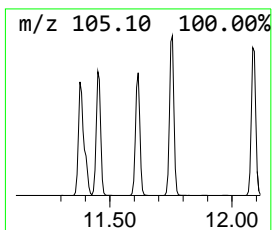
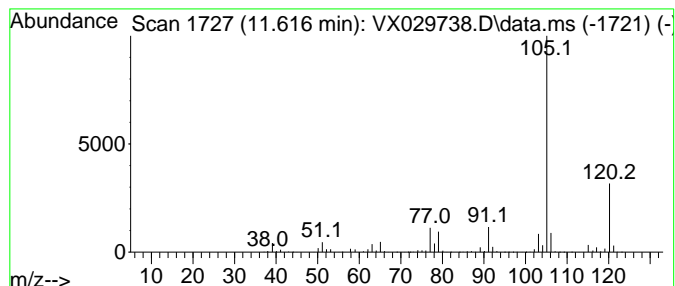
Quant Method : Z:\voasrv\HPCHEM1\MSVOA_X\Method\82X061822W.M
 Quant Title : SW846 8260

TIC Library : C:\Database\NIST20.L
 TIC Integration Parameters: LSCINT.P

 Peak Number 3 Benzene, 1-ethyl-2-methyl- Concentration Rank 2

R.T.	EstConc	Area	Relative to ISTD	R.T.
11.616	96.92 ug/l	2035080	1,4-Dichlorobenzene-d4	12.024

Hit#	of	5	Tentative ID	MW	MolForm	CAS#	Qual
1			Benzene, 1-ethyl-2-methyl-	120	C9H12	000611-14-3	94
2			Benzene, 1-ethyl-4-methyl-	120	C9H12	000622-96-8	94
3			Mesitylene	120	C9H12	000108-67-8	91
4			Benzene, 1,2,3-trimethyl-	120	C9H12	000526-73-8	91
5			Benzene, 1-ethyl-3-methyl-	120	C9H12	000620-14-4	91



Data Path : Z:\voasrv\HPCHEM1\MSVOA_X\Data\VX062322\
 Data File : VX029738.D
 Acq On : 23 Jun 2022 12:58
 Operator : JC/MD
 Sample : N3202-06 10X
 Misc : 5.0mL/MSVOA_X/WATER
 ALS Vial : 9 Sample Multiplier: 1

Instrument :
 MSVOA_X
 ClientSampleId :
 MW-28

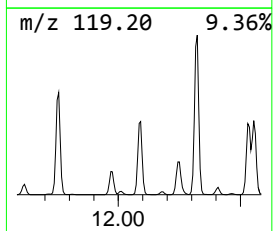
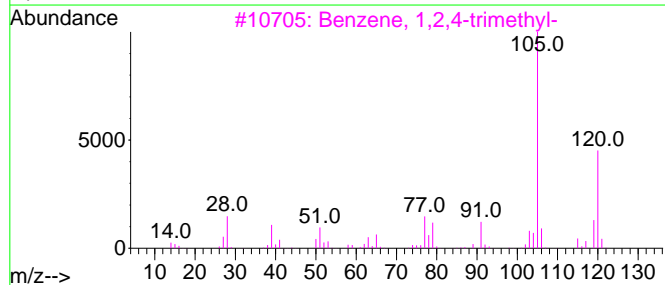
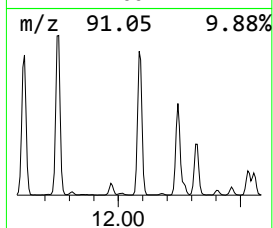
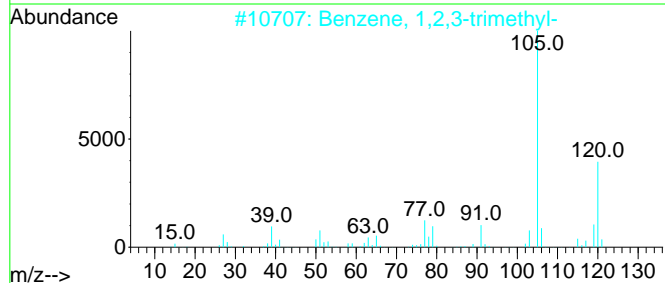
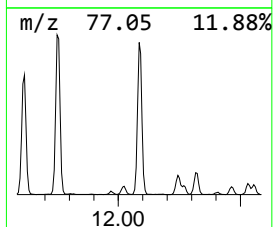
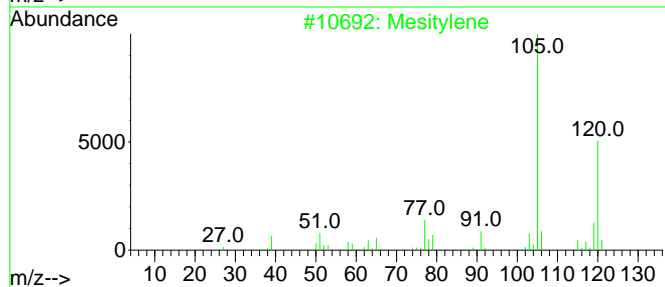
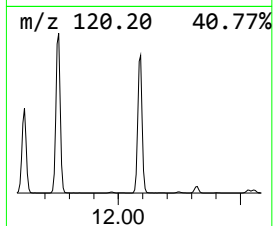
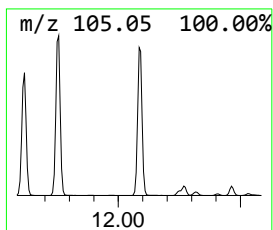
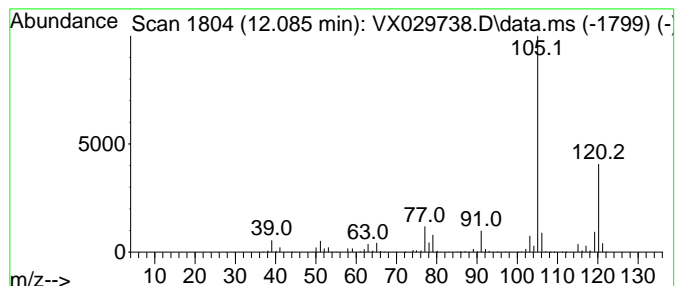
Quant Method : Z:\voasrv\HPCHEM1\MSVOA_X\Method\82X061822W.M
 Quant Title : SW846 8260

TIC Library : C:\Database\NIST20.L
 TIC Integration Parameters: LSCINT.P

 Peak Number 4 Benzene, 1,2,3-trimethyl- Concentration Rank 1

R.T.	EstConc	Area	Relative to ISTD	R.T.
12.085	128.16 ug/l	2691100	1,4-Dichlorobenzene-d4	12.024

Hit#	of	5	Tentative ID	MW	MolForm	CAS#	Qual
1			Mesitylene	120	C9H12	000108-67-8	97
2			Benzene, 1,2,3-trimethyl-	120	C9H12	000526-73-8	95
3			Benzene, 1,2,4-trimethyl-	120	C9H12	000095-63-6	94
4			Benzene, 1-ethyl-3-methyl-	120	C9H12	000620-14-4	91
5			Benzene, 1-ethyl-4-methyl-	120	C9H12	000622-96-8	90



Data Path : Z:\voasrv\HPCHEM1\MSVOA_X\Data\VX062322\
 Data File : VX029738.D
 Acq On : 23 Jun 2022 12:58
 Operator : JC/MD
 Sample : N3202-06 10X
 Misc : 5.0mL/MSVOA_X/WATER
 ALS Vial : 9 Sample Multiplier: 1

Instrument :
 MSVOA_X
 ClientSampleId :
 MW-28

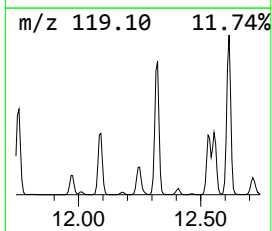
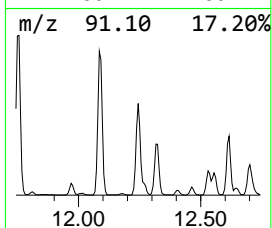
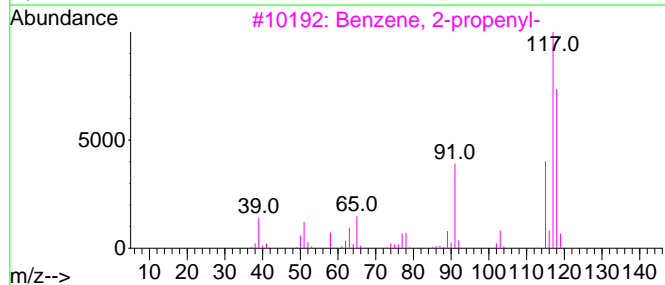
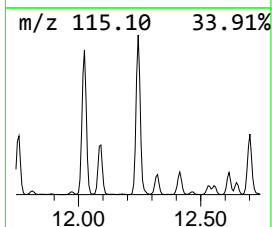
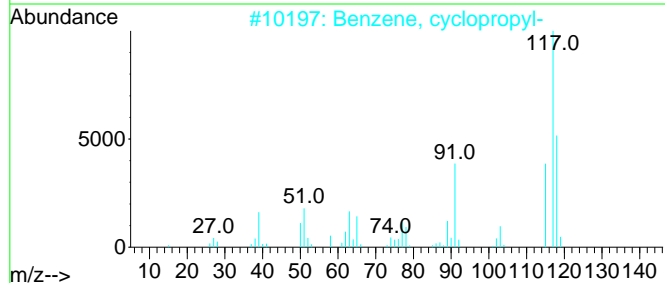
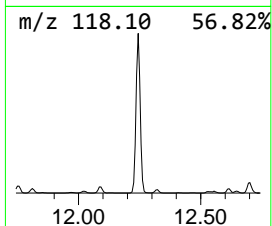
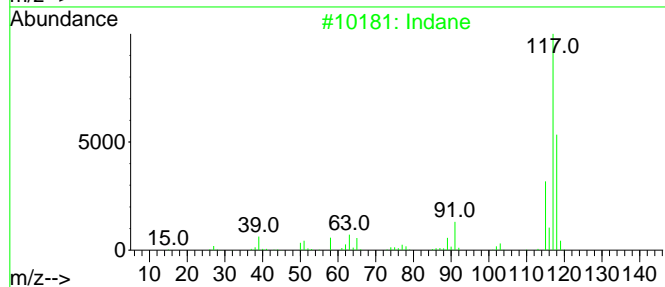
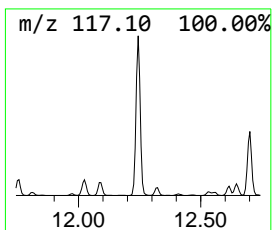
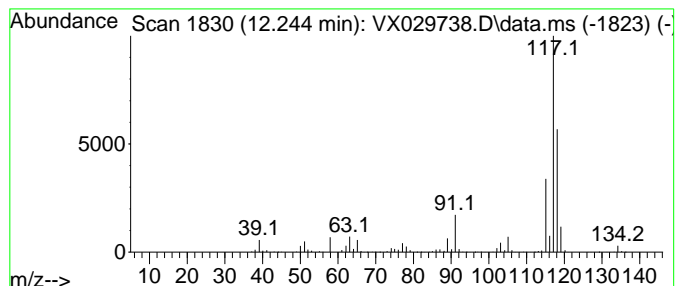
Quant Method : Z:\voasrv\HPCHEM1\MSVOA_X\Method\82X061822W.M
 Quant Title : SW846 8260

TIC Library : C:\Database\NIST20.L
 TIC Integration Parameters: LSCINT.P

 Peak Number 5 Indane Concentration Rank 3

R.T.	EstConc	Area	Relative to ISTD	R.T.
12.244	62.67 ug/l	1315920	1,4-Dichlorobenzene-d4	12.024

Hit#	of	Tentative ID	MW	MolForm	CAS#	Qual
1	5	Indane	118	C9H10	000496-11-7	81
2		Benzene, cyclopropyl-	118	C9H10	000873-49-4	81
3		Benzene, 2-propenyl-	118	C9H10	000300-57-2	74
4		Benzene, 1-ethenyl-2-methyl-	118	C9H10	000611-15-4	74
5		Deltacyclene	118	C9H10	007785-10-6	64



Data Path : Z:\voasrv\HPCHEM1\MSVOA_X\Data\VX062322\
 Data File : VX029738.D
 Acq On : 23 Jun 2022 12:58
 Operator : JC/MD
 Sample : N3202-06 10X
 Misc : 5.0mL/MSVOA_X/WATER
 ALS Vial : 9 Sample Multiplier: 1

Instrument :
 MSVOA_X
 ClientSampleId :
 MW-28

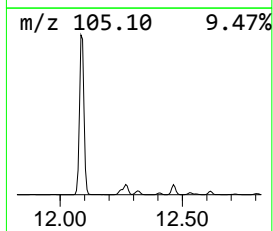
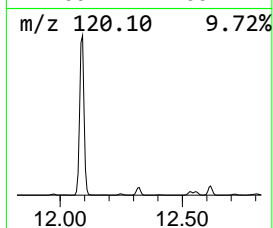
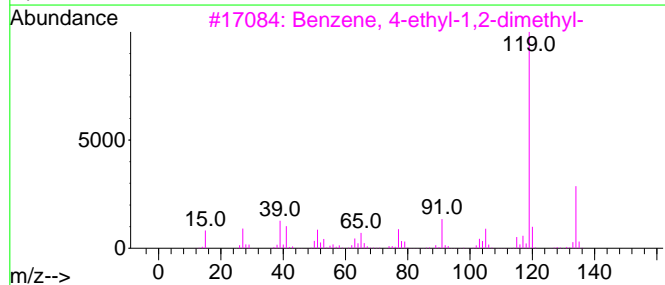
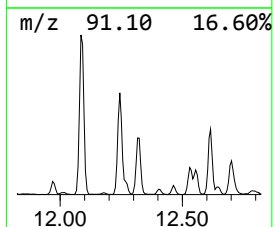
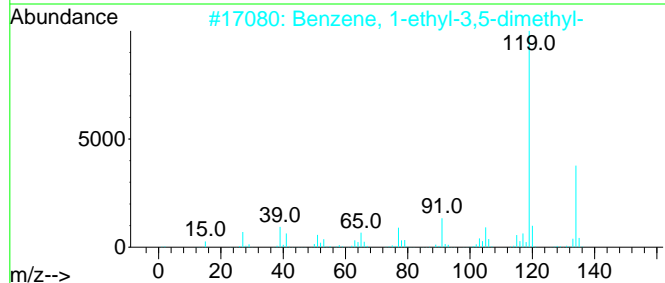
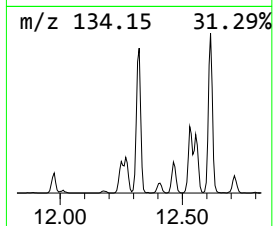
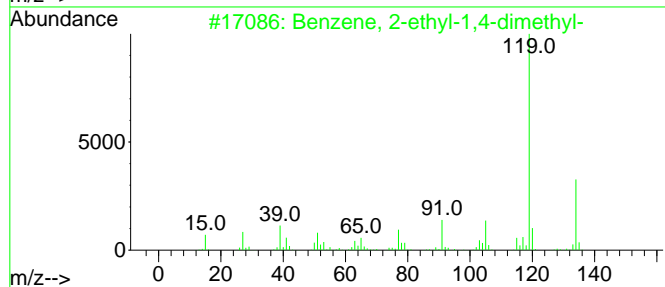
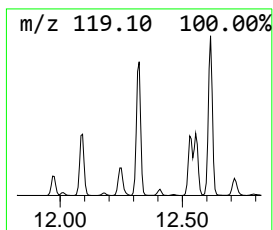
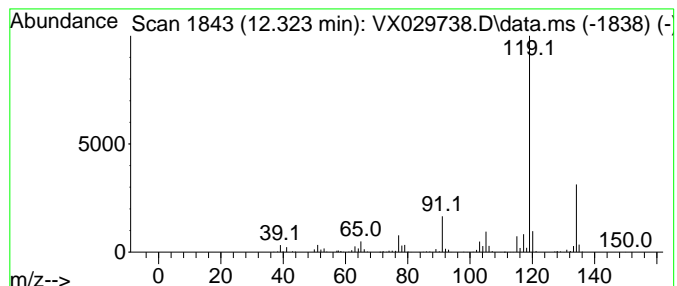
Quant Method : Z:\voasrv\HPCHEM1\MSVOA_X\Method\82X061822W.M
 Quant Title : SW846 8260

TIC Library : C:\Database\NIST20.L
 TIC Integration Parameters: LSCINT.P

 Peak Number 6 Benzene, 2-ethyl-1,4-dimethyl- Concentration Rank 7

R.T.	EstConc	Area	Relative to ISTD	R.T.
12.323	26.81 ug/l	562946	1,4-Dichlorobenzene-d4	12.024

Hit#	of	5	Tentative ID	MW	MolForm	CAS#	Qual
1			Benzene, 2-ethyl-1,4-dimethyl-	134	C10H14	001758-88-9	95
2			Benzene, 1-ethyl-3,5-dimethyl-	134	C10H14	000934-74-7	95
3			Benzene, 4-ethyl-1,2-dimethyl-	134	C10H14	000934-80-5	95
4			o-Cymene	134	C10H14	000527-84-4	95
5			Benzene, 2-ethyl-1,3-dimethyl-	134	C10H14	002870-04-4	94



Data Path : Z:\voasrv\HPCHEM1\MSVOA_X\Data\VX062322\
 Data File : VX029738.D
 Acq On : 23 Jun 2022 12:58
 Operator : JC/MD
 Sample : N3202-06 10X
 Misc : 5.0mL/MSVOA_X/WATER
 ALS Vial : 9 Sample Multiplier: 1

Instrument :
 MSVOA_X
 ClientSampleId :
 MW-28

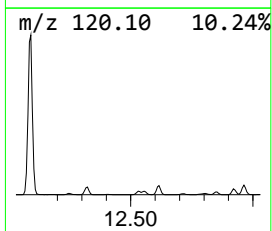
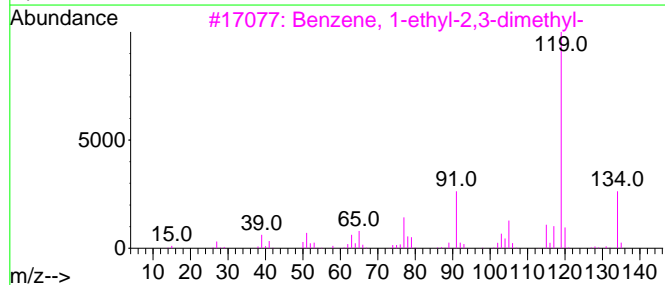
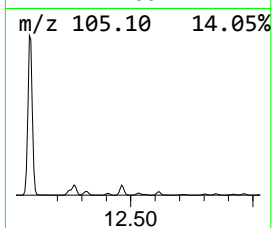
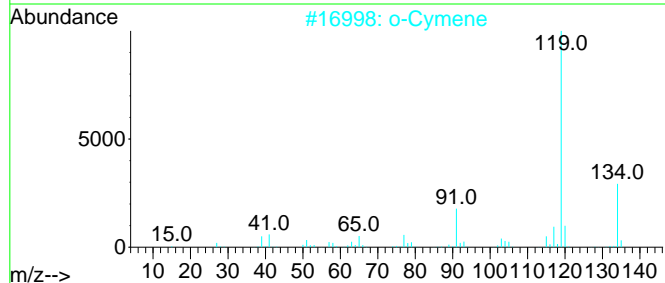
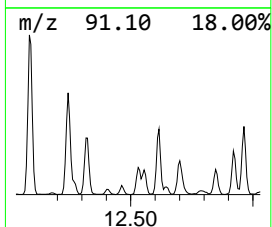
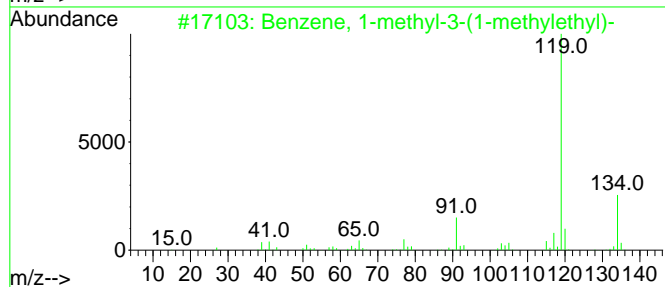
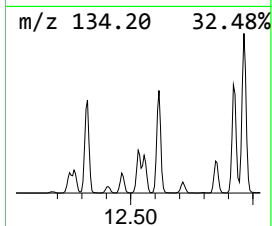
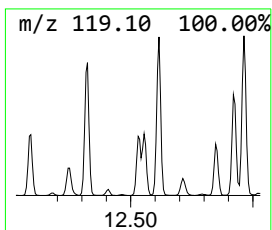
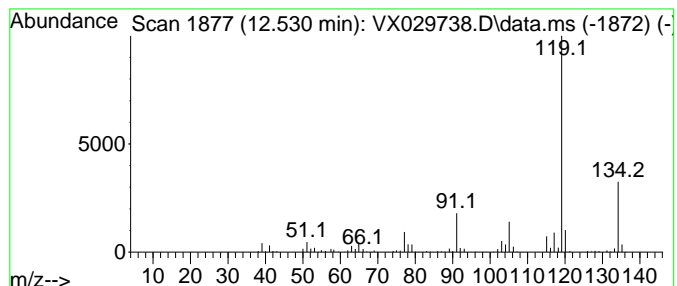
Quant Method : Z:\voasrv\HPCHEM1\MSVOA_X\Method\82X061822W.M
 Quant Title : SW846 8260

TIC Library : C:\Database\NIST20.L
 TIC Integration Parameters: LSCINT.P

 Peak Number 7 Benzene, 1-methyl-3-(1-meth... Concentration Rank 11

R.T.	EstConc	Area	Relative to ISTD	R.T.
12.530	12.55 ug/l	263521	1,4-Dichlorobenzene-d4	12.024

Hit#	of	5	Tentative ID	MW	MolForm	CAS#	Qual
1			Benzene, 1-methyl-3-(1-methyleth...	134	C10H14	000535-77-3	95
2			o-Cymene	134	C10H14	000527-84-4	95
3			Benzene, 1-ethyl-2,3-dimethyl-	134	C10H14	000933-98-2	95
4			Benzene, 4-ethyl-1,2-dimethyl-	134	C10H14	000934-80-5	95
5			Benzene, 2-ethyl-1,4-dimethyl-	134	C10H14	001758-88-9	95



Data Path : Z:\voasrv\HPCHEM1\MSVOA_X\Data\VX062322\
 Data File : VX029738.D
 Acq On : 23 Jun 2022 12:58
 Operator : JC/MD
 Sample : N3202-06 10X
 Misc : 5.0mL/MSVOA_X/WATER
 ALS Vial : 9 Sample Multiplier: 1

Instrument :
 MSVOA_X
 ClientSampleId :
 MW-28

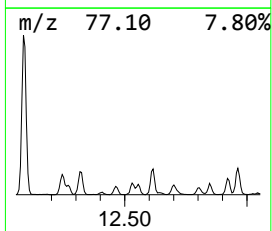
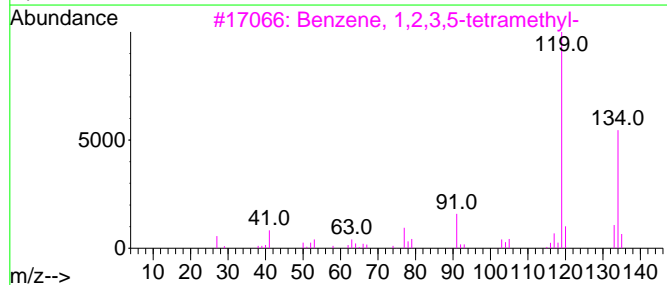
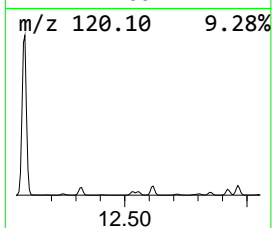
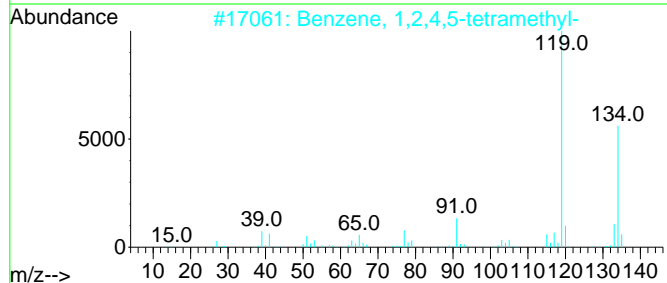
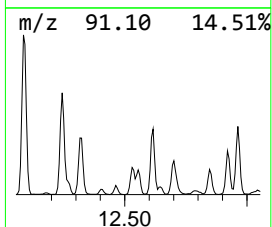
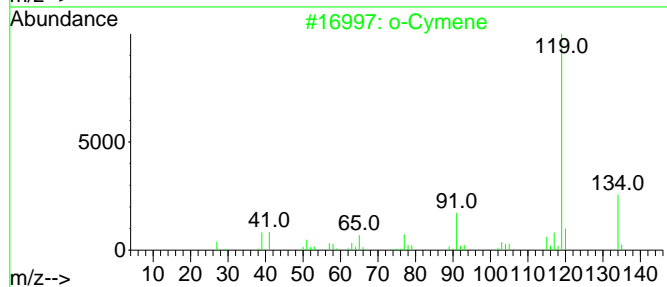
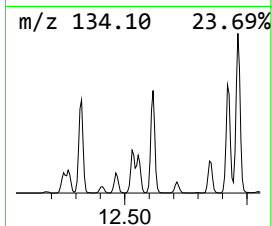
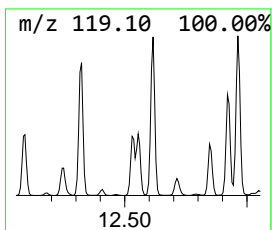
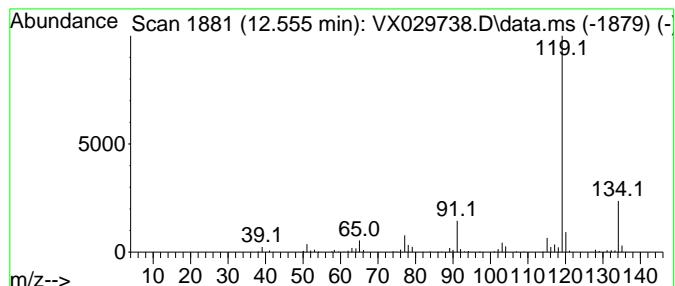
Quant Method : Z:\voasrv\HPCHEM1\MSVOA_X\Method\82X061822W.M
 Quant Title : SW846 8260

TIC Library : C:\Database\NIST20.L
 TIC Integration Parameters: LSCINT.P

 Peak Number 8 o-Cymene Concentration Rank 14

R.T.	EstConc	Area	Relative to ISTD	R.T.
12.555	10.10 ug/l	212143	1,4-Dichlorobenzene-d4	12.024

Hit#	of 5	Tentative ID	MW	MolForm	CAS#	Qual
1		o-Cymene	134	C10H14	000527-84-4	94
2		Benzene, 1,2,4,5-tetramethyl-	134	C10H14	000095-93-2	91
3		Benzene, 1,2,3,5-tetramethyl-	134	C10H14	000527-53-7	91
4		p-Cymene	134	C10H14	000099-87-6	91
5		Benzene, 1,2,3,4-tetramethyl-	134	C10H14	000488-23-3	91



Data Path : Z:\voasrv\HPCHEM1\MSVOA_X\Data\VX062322\
 Data File : VX029738.D
 Acq On : 23 Jun 2022 12:58
 Operator : JC/MD
 Sample : N3202-06 10X
 Misc : 5.0mL/MSVOA_X/WATER
 ALS Vial : 9 Sample Multiplier: 1

Instrument :
 MSVOA_X
 ClientSampleId :
 MW-28

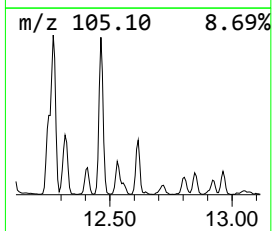
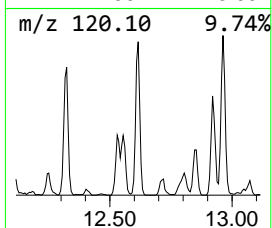
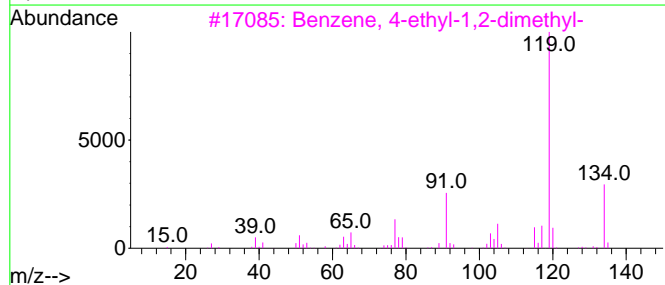
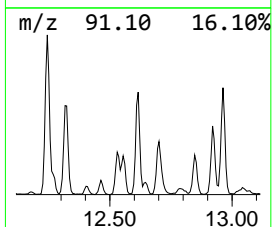
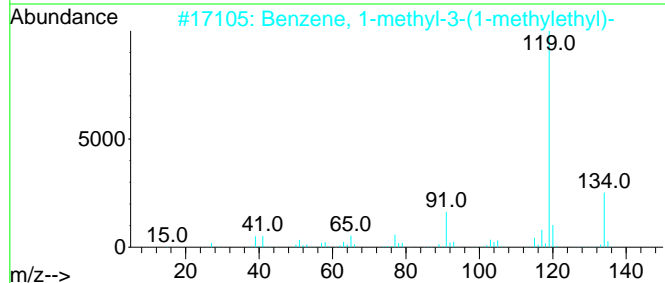
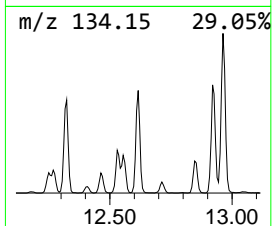
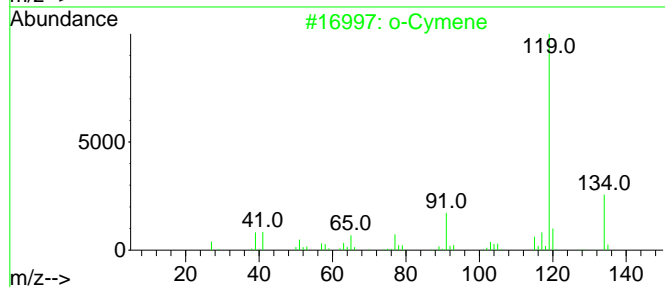
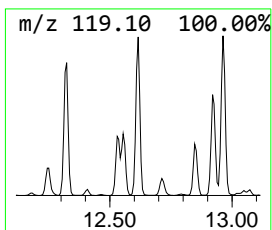
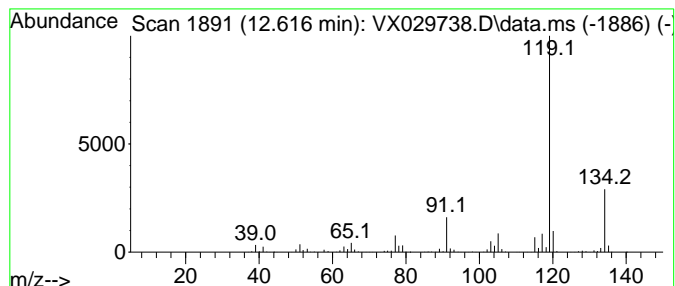
Quant Method : Z:\voasrv\HPCHEM1\MSVOA_X\Method\82X061822W.M
 Quant Title : SW846 8260

TIC Library : C:\Database\NIST20.L
 TIC Integration Parameters: LSCINT.P

 Peak Number 9 Benzene, 4-ethyl-1,2-dimethyl- Concentration Rank 6

R.T.	EstConc	Area	Relative to ISTD	R.T.
12.616	28.64 ug/l	601375	1,4-Dichlorobenzene-d4	12.024

Hit#	of	5	Tentative ID	MW	MolForm	CAS#	Qual
1			o-Cymene	134	C10H14	000527-84-4	97
2			Benzene, 1-methyl-3-(1-methyleth...	134	C10H14	000535-77-3	97
3			Benzene, 4-ethyl-1,2-dimethyl-	134	C10H14	000934-80-5	96
4			Benzene, 2-ethyl-1,3-dimethyl-	134	C10H14	002870-04-4	95
5			Benzene, 1-ethyl-2,4-dimethyl-	134	C10H14	000874-41-9	94



Data Path : Z:\voasrv\HPCHEM1\MSVOA_X\Data\VX062322\
 Data File : VX029738.D
 Acq On : 23 Jun 2022 12:58
 Operator : JC/MD
 Sample : N3202-06 10X
 Misc : 5.0mL/MSVOA_X/WATER
 ALS Vial : 9 Sample Multiplier: 1

Instrument :
 MSVOA_X
 ClientSampleId :
 MW-28

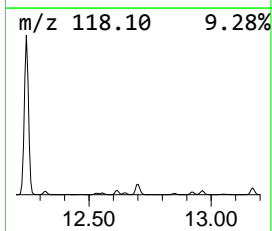
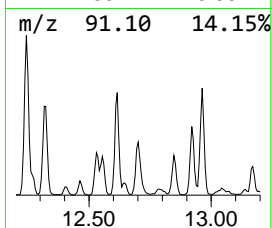
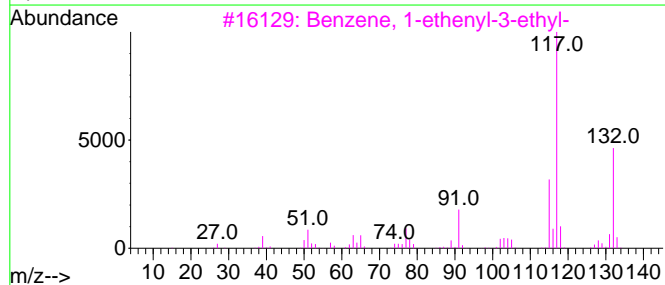
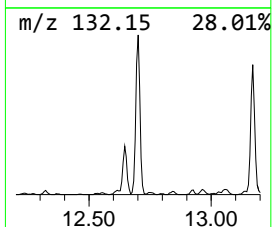
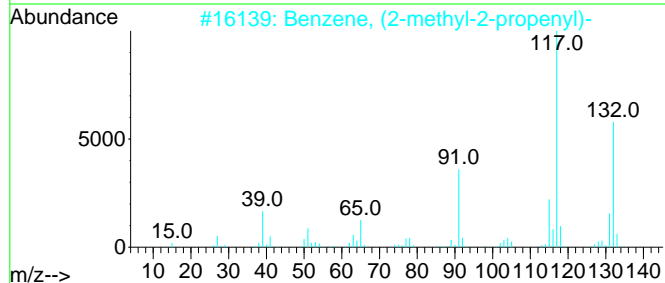
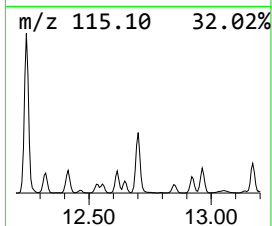
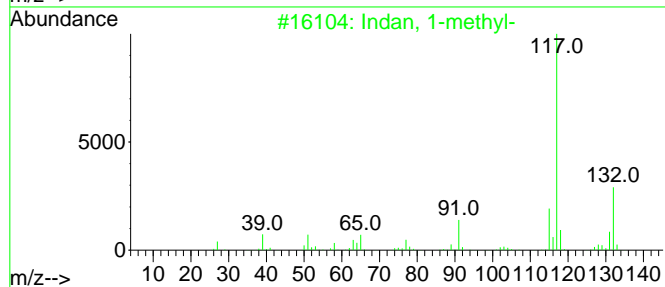
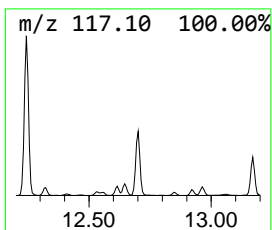
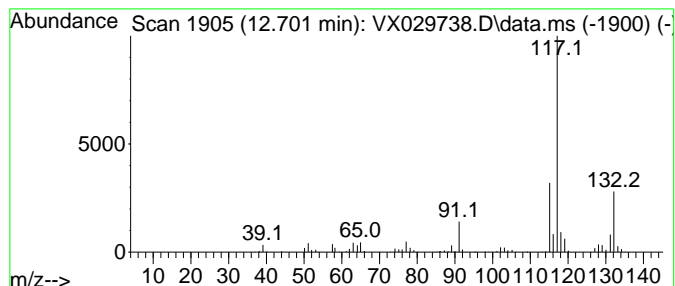
Quant Method : Z:\voasrv\HPCHEM1\MSVOA_X\Method\82X061822W.M
 Quant Title : SW846 8260

TIC Library : C:\Database\NIST20.L
 TIC Integration Parameters: LSCINT.P

 Peak Number 10 Indan, 1-methyl- Concentration Rank 8

R.T.	EstConc	Area	Relative to ISTD	R.T.
12.701	21.92 ug/l	460245	1,4-Dichlorobenzene-d4	12.024

Hit#	of 5	Tentative ID	MW	MolForm	CAS#	Qual
1		Indan, 1-methyl-	132	C10H12	000767-58-8	93
2		Benzene, (2-methyl-2-propenyl)-	132	C10H12	003290-53-7	90
3		Benzene, 1-ethenyl-3-ethyl-	132	C10H12	007525-62-4	87
4		Benzene, (2-methyl-1-propenyl)-	132	C10H12	000768-49-0	87
5		Benzene, 1-ethenyl-4-ethyl-	132	C10H12	003454-07-7	86



Data Path : Z:\voasrv\HPCHEM1\MSVOA_X\Data\VX062322\
 Data File : VX029738.D
 Acq On : 23 Jun 2022 12:58
 Operator : JC/MD
 Sample : N3202-06 10X
 Misc : 5.0mL/MSVOA_X/WATER
 ALS Vial : 9 Sample Multiplier: 1

Instrument :
 MSVOA_X
 ClientSampleId :
 MW-28

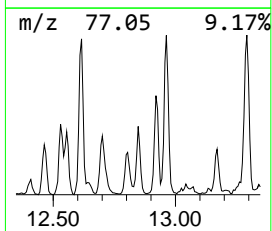
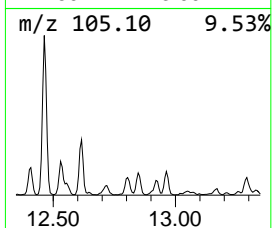
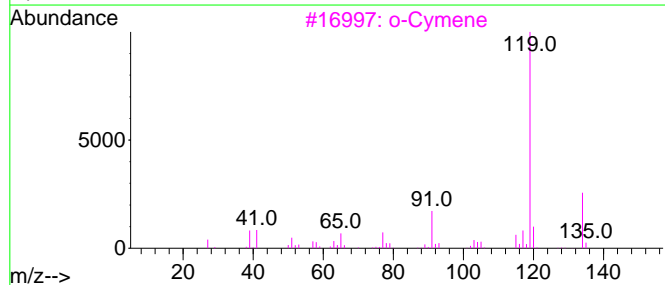
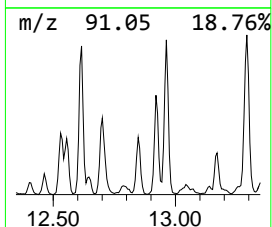
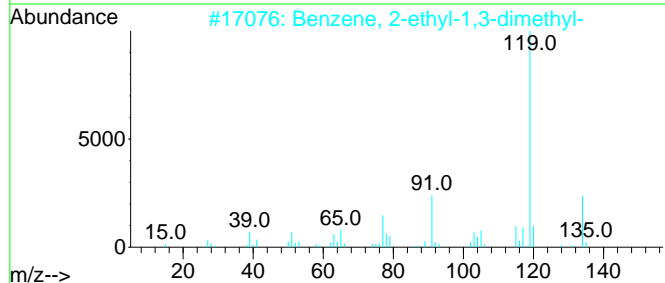
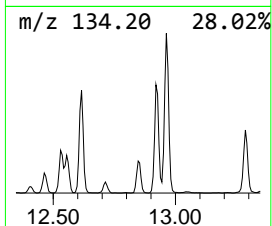
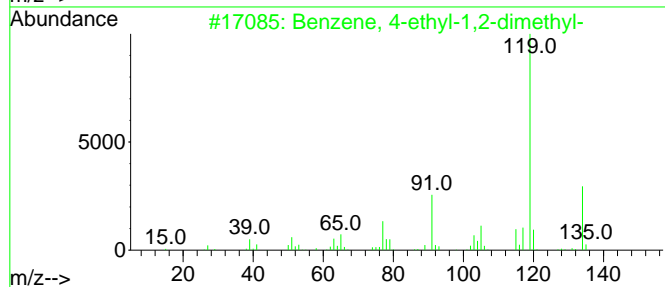
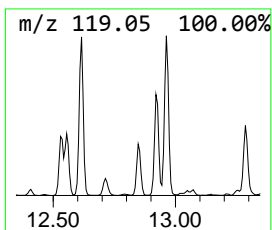
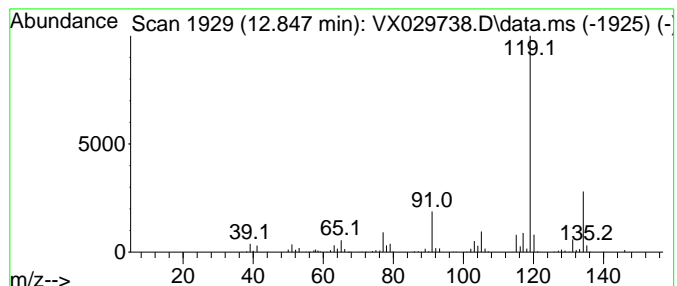
Quant Method : Z:\voasrv\HPCHEM1\MSVOA_X\Method\82X061822W.M
 Quant Title : SW846 8260

TIC Library : C:\Database\NIST20.L
 TIC Integration Parameters: LSCINT.P

 Peak Number 11 Benzene, 2-ethyl-1,3-dimethyl- Concentration Rank 13

R.T.	EstConc	Area	Relative to ISTD	R.T.
12.847	10.64 ug/l	223404	1,4-Dichlorobenzene-d4	12.024

Hit#	of	5	Tentative ID	MW	MolForm	CAS#	Qual
1			Benzene, 4-ethyl-1,2-dimethyl-	134	C10H14	000934-80-5	96
2			Benzene, 2-ethyl-1,3-dimethyl-	134	C10H14	002870-04-4	95
3			o-Cymene	134	C10H14	000527-84-4	95
4			Benzene, 1-ethyl-2,3-dimethyl-	134	C10H14	000933-98-2	95
5			Benzene, 1-methyl-3-(1-methyleth...	134	C10H14	000535-77-3	93



Data Path : Z:\voasrv\HPCHEM1\MSVOA_X\Data\VX062322\
 Data File : VX029738.D
 Acq On : 23 Jun 2022 12:58
 Operator : JC/MD
 Sample : N3202-06 10X
 Misc : 5.0mL/MSVOA_X/WATER
 ALS Vial : 9 Sample Multiplier: 1

Instrument :
 MSVOA_X
 ClientSampleId :
 MW-28

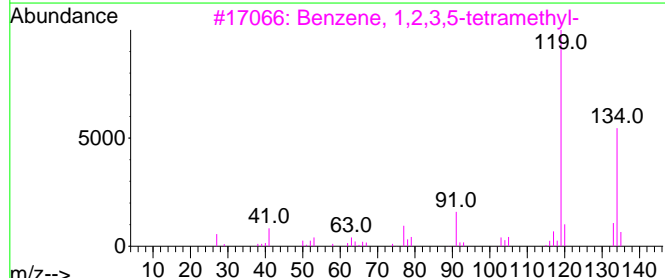
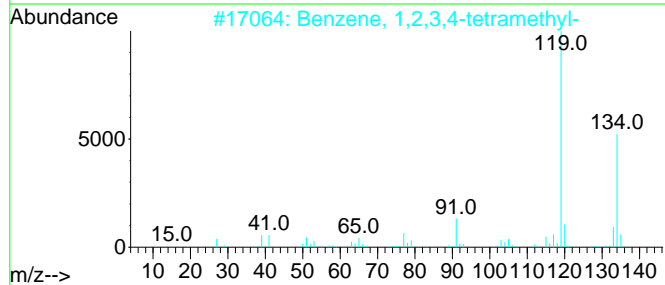
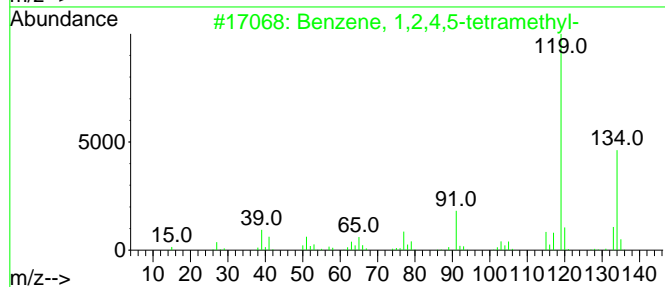
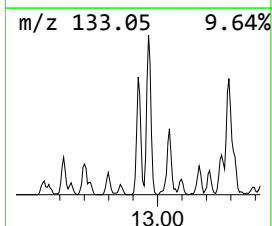
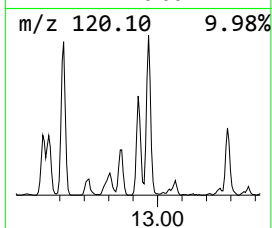
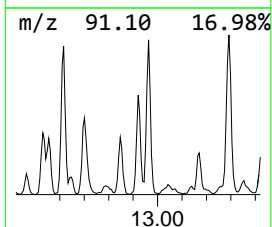
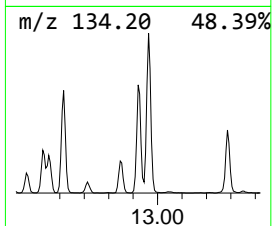
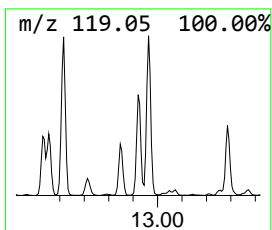
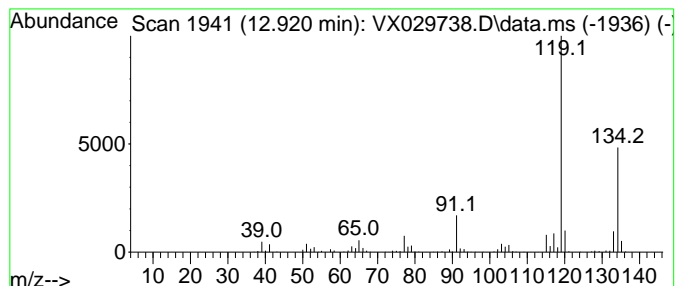
Quant Method : Z:\voasrv\HPCHEM1\MSVOA_X\Method\82X061822W.M
 Quant Title : SW846 8260

TIC Library : C:\Database\NIST20.L
 TIC Integration Parameters: LSCINT.P

 Peak Number 12 Benzene, 1,2,4,5-tetramethyl- Concentration Rank 9

R.T.	EstConc	Area	Relative to ISTD	R.T.
12.920	21.44 ug/l	450143	1,4-Dichlorobenzene-d4	12.024

Hit#	of 5	Tentative ID	MW	MolForm	CAS#	Qual
1		Benzene, 1,2,4,5-tetramethyl-	134	C10H14	000095-93-2	97
2		Benzene, 1,2,3,4-tetramethyl-	134	C10H14	000488-23-3	97
3		Benzene, 1,2,3,5-tetramethyl-	134	C10H14	000527-53-7	96
4		o-Cymene	134	C10H14	000527-84-4	94
5		Benzene, 2-ethyl-1,4-dimethyl-	134	C10H14	001758-88-9	93



Data Path : Z:\voasrv\HPCHEM1\MSVOA_X\Data\VX062322\
 Data File : VX029738.D
 Acq On : 23 Jun 2022 12:58
 Operator : JC/MD
 Sample : N3202-06 10X
 Misc : 5.0mL/MSVOA_X/WATER
 ALS Vial : 9 Sample Multiplier: 1

Instrument :
 MSVOA_X
 ClientSampleId :
 MW-28

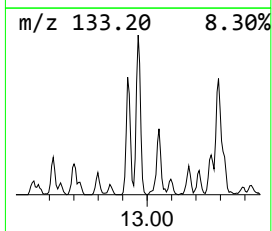
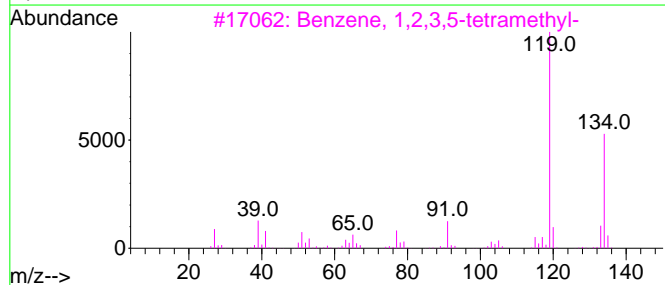
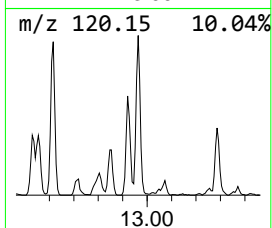
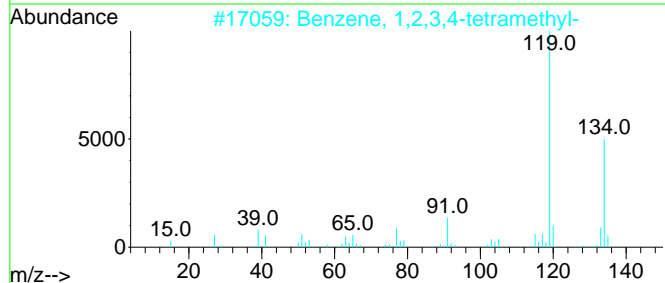
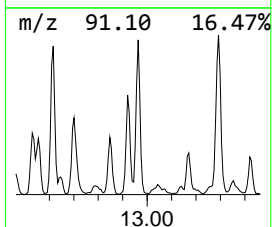
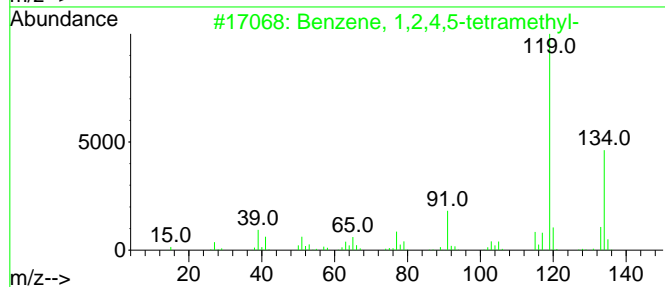
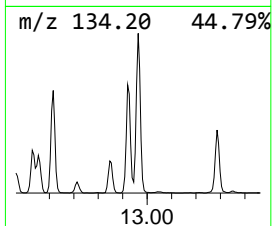
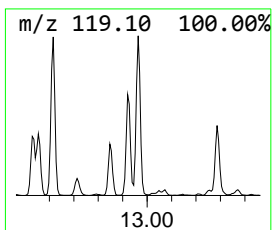
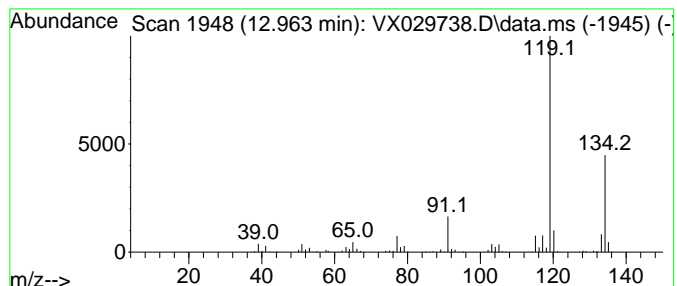
Quant Method : Z:\voasrv\HPCHEM1\MSVOA_X\Method\82X061822W.M
 Quant Title : SW846 8260

TIC Library : C:\Database\NIST20.L
 TIC Integration Parameters: LSCINT.P

 Peak Number 13 Benzene, 1,2,3,4-tetramethyl- Concentration Rank 5

R.T.	EstConc	Area	Relative to ISTD	R.T.
12.963	30.38 ug/l	637967	1,4-Dichlorobenzene-d4	12.024

Hit#	of 5	Tentative ID	MW	MolForm	CAS#	Qual
1		Benzene, 1,2,4,5-tetramethyl-	134	C10H14	000095-93-2	97
2		Benzene, 1,2,3,4-tetramethyl-	134	C10H14	000488-23-3	97
3		Benzene, 1,2,3,5-tetramethyl-	134	C10H14	000527-53-7	95
4		o-Cymene	134	C10H14	000527-84-4	95
5		Benzene, 1-ethyl-2,4-dimethyl-	134	C10H14	000874-41-9	94



Data Path : Z:\voasrv\HPCHEM1\MSVOA_X\Data\VX062322\
 Data File : VX029738.D
 Acq On : 23 Jun 2022 12:58
 Operator : JC/MD
 Sample : N3202-06 10X
 Misc : 5.0mL/MSVOA_X/WATER
 ALS Vial : 9 Sample Multiplier: 1

Instrument :
 MSVOA_X
 ClientSampleId :
 MW-28

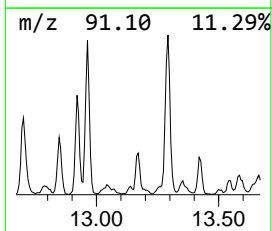
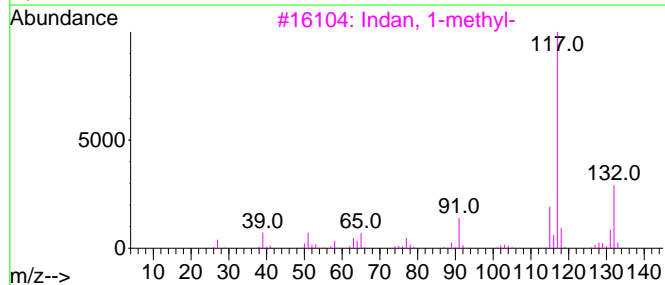
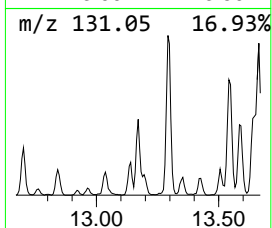
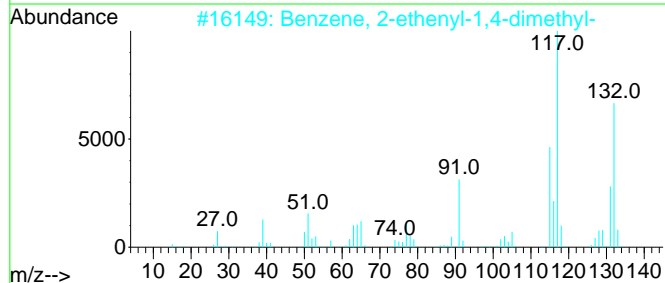
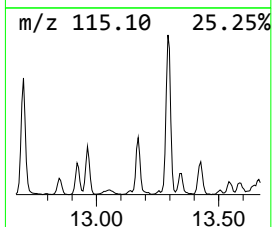
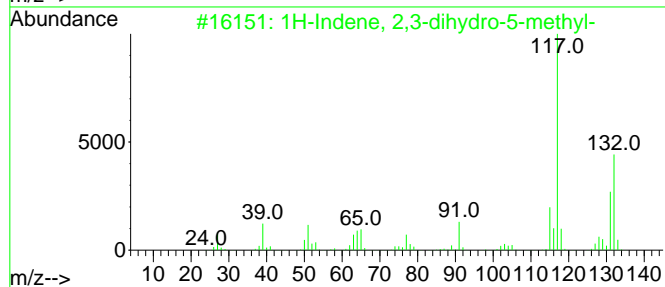
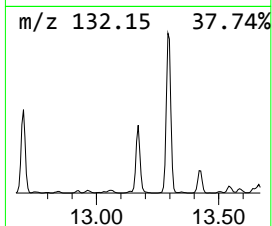
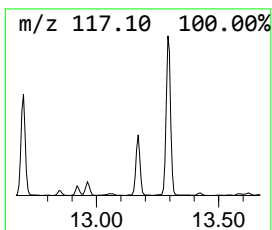
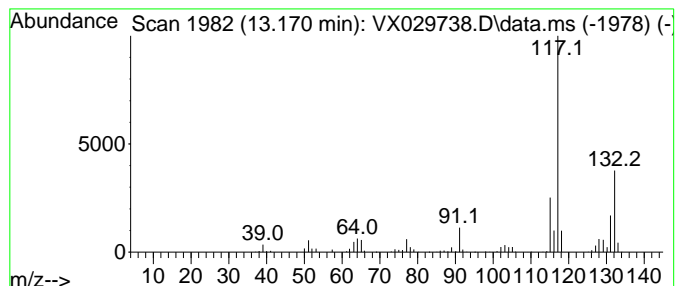
Quant Method : Z:\voasrv\HPCHEM1\MSVOA_X\Method\82X061822W.M
 Quant Title : SW846 8260

TIC Library : C:\Database\NIST20.L
 TIC Integration Parameters: LSCINT.P

 Peak Number 14 1H-Indene, 2,3-dihydro-5-me... Concentration Rank 12

R.T.	EstConc	Area	Relative to ISTD	R.T.
13.170	10.97 ug/l	230387	1,4-Dichlorobenzene-d4	12.024

Hit#	of 5	Tentative ID	MW	MolForm	CAS#	Qual
1		1H-Indene, 2,3-dihydro-5-methyl-	132	C10H12	000874-35-1	93
2		Benzene, 2-ethenyl-1,4-dimethyl-	132	C10H12	002039-89-6	91
3		Indan, 1-methyl-	132	C10H12	000767-58-8	90
4		1H-Indene, 2,3-dihydro-4-methyl-	132	C10H12	000824-22-6	90
5		Benzene, 1-ethenyl-4-ethyl-	132	C10H12	003454-07-7	90



Data Path : Z:\voasrv\HPCHEM1\MSVOA_X\Data\VX062322\
 Data File : VX029738.D
 Acq On : 23 Jun 2022 12:58
 Operator : JC/MD
 Sample : N3202-06 10X
 Misc : 5.0mL/MSVOA_X/WATER
 ALS Vial : 9 Sample Multiplier: 1

Instrument :
 MSVOA_X
 ClientSampleId :
 MW-28

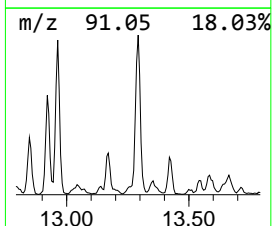
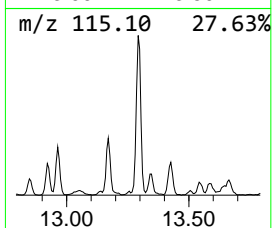
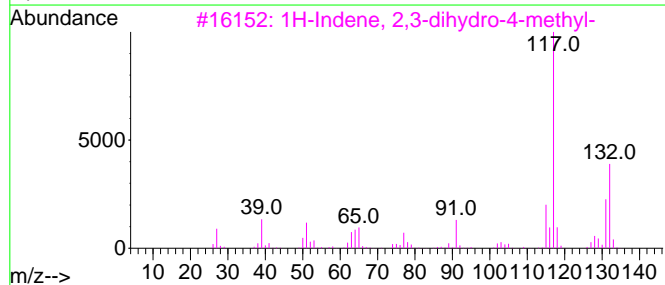
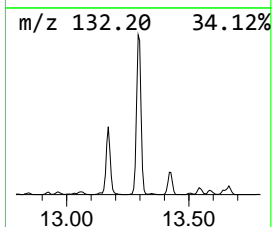
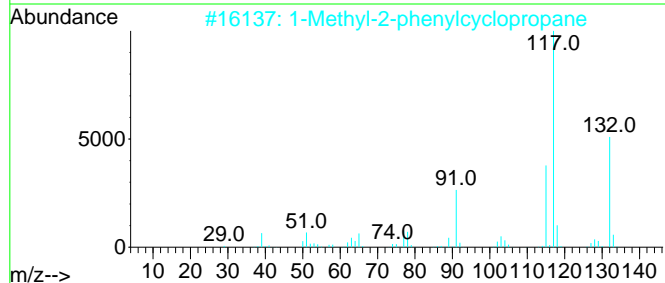
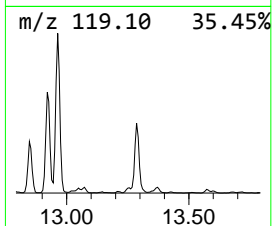
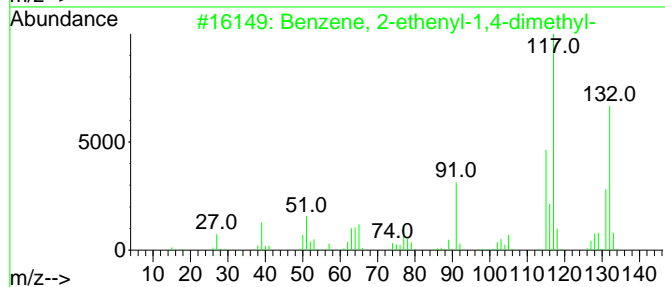
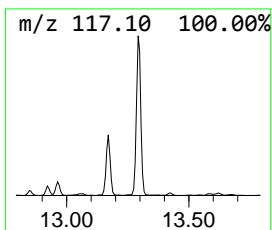
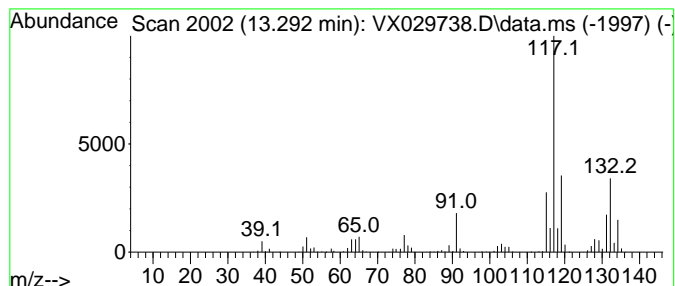
Quant Method : Z:\voasrv\HPCHEM1\MSVOA_X\Method\82X061822W.M
 Quant Title : SW846 8260

TIC Library : C:\Database\NIST20.L
 TIC Integration Parameters: LSCINT.P

 Peak Number 15 Benzene, 2-ethenyl-1,4-dime... Concentration Rank 4

R.T.	EstConc	Area	Relative to ISTD	R.T.
13.292	44.97 ug/l	944273	1,4-Dichlorobenzene-d4	12.024

Hit#	of 5	Tentative ID	MW	MolForm	CAS#	Qual
1		Benzene, 2-ethenyl-1,4-dimethyl-	132	C10H12	002039-89-6	95
2		1-Methyl-2-phenylcyclopropane	132	C10H12	003145-76-4	92
3		1H-Indene, 2,3-dihydro-4-methyl-	132	C10H12	000824-22-6	91
4		3-Phenylbut-1-ene	132	C10H12	000934-10-1	87
5		Benzene, (2-methyl-1-propenyl)-	132	C10H12	000768-49-0	83



Data Path : Z:\voasrv\HPCHEM1\MSVOA_X\Data\VX062322\
 Data File : VX029738.D
 Acq On : 23 Jun 2022 12:58
 Operator : JC/MD
 Sample : N3202-06 10X
 Misc : 5.0mL/MSVOA_X/WATER
 ALS Vial : 9 Sample Multiplier: 1

Instrument :
 MSVOA_X
 ClientSampleId :
 MW-28

Quant Method : Z:\voasrv\HPCHEM1\MSVOA_X\Method\82X061822W.M
 Quant Title : SW846 8260

TIC Library : C:\Database\NIST0.L
 TIC Integration Parameters: LSCINT.P

TIC Top Hit name	RT	EstConc	Units	Response	--Internal Standard--			
					#	RT	Resp	Conc
Amylene hydrate	6.233	18.3	ug/l	363039	2	6.763	993666	50.0
3-Pentanone, 2,...	9.458	9.7	ug/l	236887	3	10.055	1215780	50.0
Benzene, 1-ethy...	11.616	96.9	ug/l	2035080	4	12.024	1049920	50.0
Benzene, 1,2,3-...	12.085	128.2	ug/l	2691100	4	12.024	1049920	50.0
Indane	12.244	62.7	ug/l	1315920	4	12.024	1049920	50.0
Benzene, 2-ethy...	12.323	26.8	ug/l	562946	4	12.024	1049920	50.0
Benzene, 1-meth...	12.530	12.6	ug/l	263521	4	12.024	1049920	50.0
o-Cymene	12.555	10.1	ug/l	212143	4	12.024	1049920	50.0
Benzene, 4-ethy...	12.616	28.6	ug/l	601375	4	12.024	1049920	50.0
Indan, 1-methyl-	12.701	21.9	ug/l	460245	4	12.024	1049920	50.0
Benzene, 2-ethy...	12.847	10.6	ug/l	223404	4	12.024	1049920	50.0
Benzene, 1,2,4,...	12.920	21.4	ug/l	450143	4	12.024	1049920	50.0
Benzene, 1,2,3,...	12.963	30.4	ug/l	637967	4	12.024	1049920	50.0
1H-Indene, 2,3-...	13.170	11.0	ug/l	230387	4	12.024	1049920	50.0
Benzene, 2-ethe...	13.292	45.0	ug/l	944273	4	12.024	1049920	50.0