

Data Path : Z:\VOASRV\HPCHEM1\MSVOA X\DATA\VX062419\
 Data File : VX010405.D
 Acq On : 24 Jun 2019 12:07
 Operator : JC/SP
 Sample : K3499-08
 Misc : 5.0mL/MSVOA X/WATER
 ALS Vial : 6 Sample Multiplier: 1

Instrument :
 MSVOA_X
 ClientSampled :
 TWP-B-1

Quant Time: Jun 25 03:36:22 2019
 Quant Method : Z:\VOASRV\HPCHEM1\MSVOA_X\METHOD\82X061919W.M
 Quant Title : SW846 8260
 QLast Update : Thu Jun 20 03:31:56 2019
 Response via : Initial Calibration

Internal Standards	R.T.	QIon	Response	Conc	Units	Dev(Min)
1) Pentafluorobenzene	5.66	168	302637	50.00	ug/l	0.00
34) 1,4-Difluorobenzene	6.86	114	459422	50.00	ug/l	0.00
63) Chlorobenzene-d5	10.11	117	413474	50.00	ug/l	0.00
72) 1,4-Dichlorobenzene-d4	12.08	152	189742	50.00	ug/l	0.00

System Monitoring Compounds

33) 1,2-Dichloroethane-d4	6.06	65	140423	49.49	ug/l	0.00
Spiked Amount	50.000		Recovery	=	98.98%	
35) Dibromofluoromethane	5.50	113	143413	51.02	ug/l	0.00
Spiked Amount	50.000		Recovery	=	102.04%	
50) Toluene-d8	8.71	98	539898	50.20	ug/l	0.00
Spiked Amount	50.000		Recovery	=	100.40%	
62) 4-Bromofluorobenzene	11.13	95	180655	46.53	ug/l	0.00
Spiked Amount	50.000		Recovery	=	93.06%	

Target Compounds

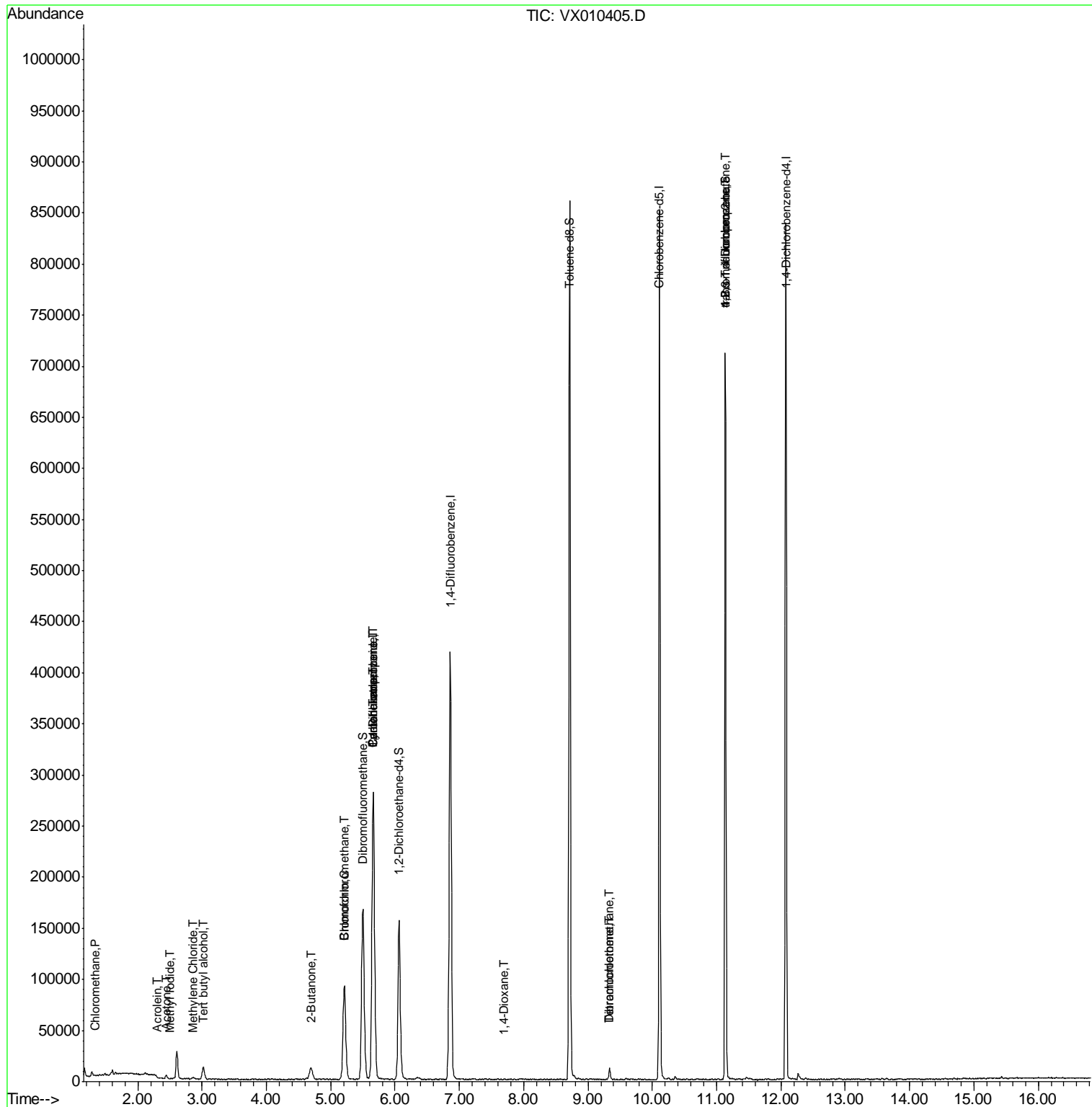
						Qvalue
3) Chloromethane	1.33	50	747	0.305	ug/l	95
10) Methyl Iodide	2.51	142	1009	0.274	ug/l #	88
11) Tert butyl alcohol	3.02	59	7118	9.587	ug/l #	91
13) Acrolein	2.31	56	151	0.307	ug/l #	14
16) Acetone	2.44	43	4519	3.178	ug/l	95
20) Methylene Chloride	2.86	84	828	0.283	ug/l #	85
25) 2-Butanone	4.68	43	429	0.206	ug/l	91
28) Bromochloromethane	5.22	49	8412	3.909	ug/l #	2
30) Chloroform	5.21	83	110856	22.892	ug/l	99
31) Cyclohexane	5.67	56	5571	1.359	ug/l #	13
36) 1,1-Dichloropropene	5.67	75	18304	5.014	ug/l #	48
38) Carbon Tetrachloride	5.67	117	26550	6.716	ug/l #	15
49) 1,4-Dioxane	7.69	88	19	0.228	ug/l #	1
60) Dibromochloromethane	9.34	129	1936	0.560	ug/l #	11
64) Tetrachloroethene	9.34	164	2316	0.693	ug/l #	86
76) 1,2,3-Trichloropropane	11.13	75	86353	24.975	ug/l #	33
81) trans-1,4-Dichloro-2-buten	11.13	75	86353	58.264	ug/l #	16

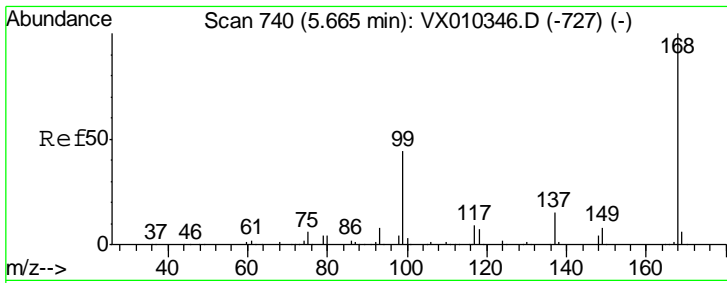
(#) = qualifier out of range (m) = manual integration (+) = signals summed

Data Path : Z:\VOASRV\HPCHEM1\MSVOA X\DATA\VX062419\
 Data File : VX010405.D
 Acq On : 24 Jun 2019 12:07
 Operator : JC/SP
 Sample : K3499-08
 Misc : 5.0mL/MSVOA X/WATER
 ALS Vial : 6 Sample Multiplier: 1

Instrument :
 MSVOA_X
 Client Sampled :
 TWP-B-1

Quant Time: Jun 25 03:36:22 2019
 Quant Method : Z:\VOASRV\HPCHEM1\MSVOA_X\METHOD\82X061919W.M
 Quant Title : SW846 8260
 QLast Update : Thu Jun 20 03:31:56 2019
 Response via : Initial Calibration



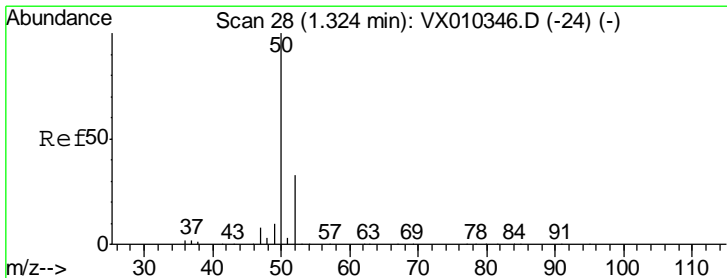
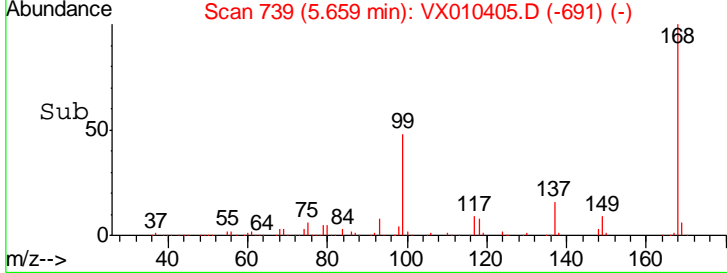
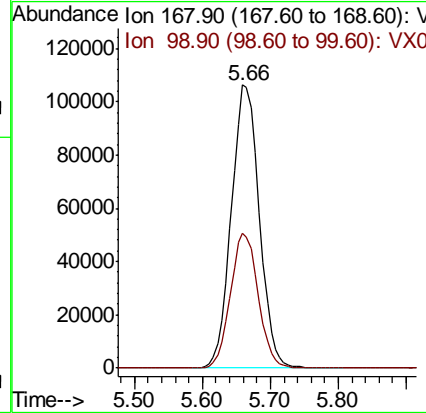
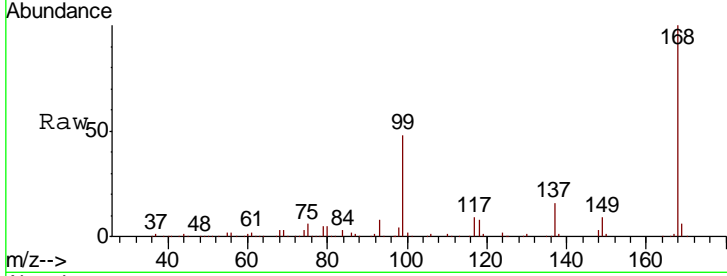


#1
 Pentafluorobenzene
 Concen: 50.000 ug/l
 RT: 5.66 min Scan# 739
 Delta R.T. -0.01 min
 Lab File: VX010405.D
 Acq: 24 Jun 2019 12:07

Instrument : MSVOA_X
 ClientSampled : TWP-B-1

Tgt Ion: 168 Resp: 302637

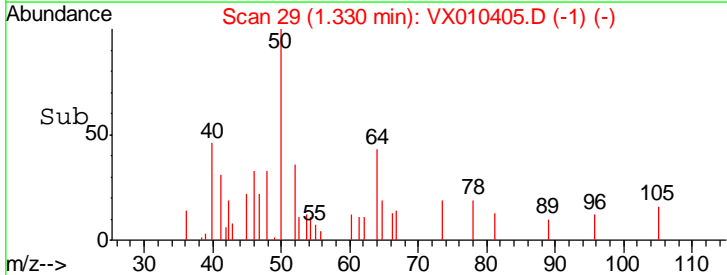
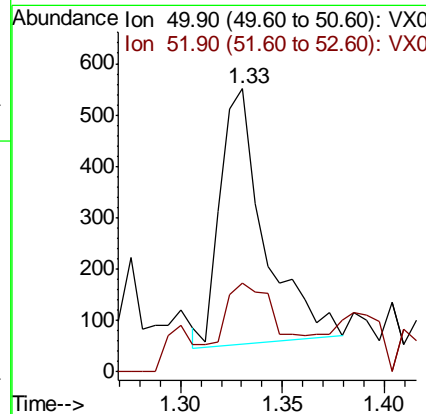
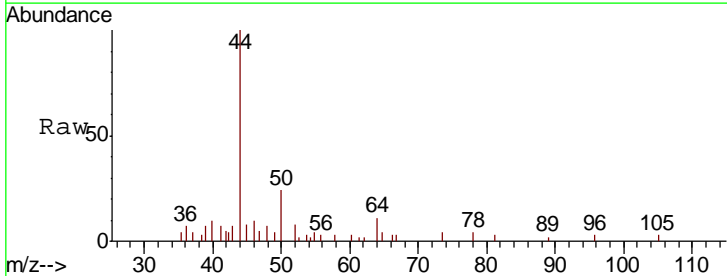
Ion	Ratio	Lower	Upper
168	100		
99	47.6	35.5	53.3

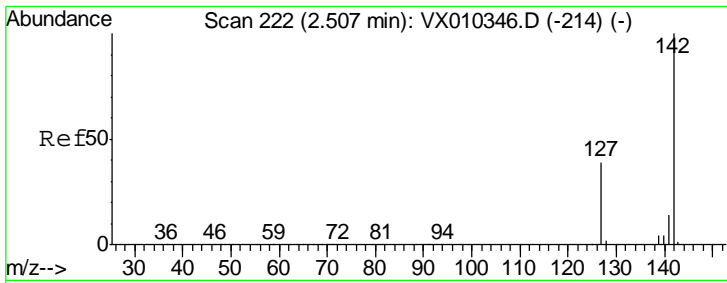


#3
 Chloromethane
 Concen: 0.305 ug/l
 RT: 1.33 min Scan# 29
 Delta R.T. 0.01 min
 Lab File: VX010405.D
 Acq: 24 Jun 2019 12:07

Tgt Ion: 50 Resp: 747

Ion	Ratio	Lower	Upper
50	100		
52	35.8	26.5	39.7

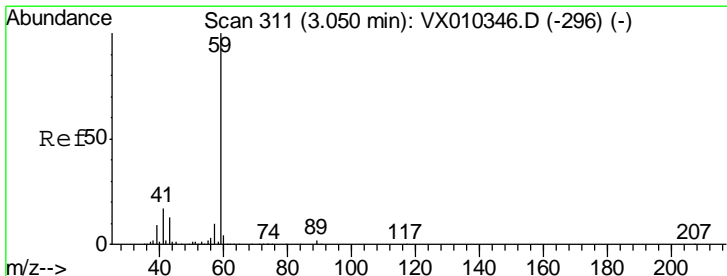
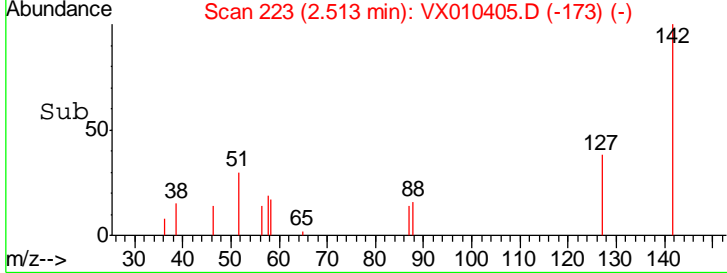
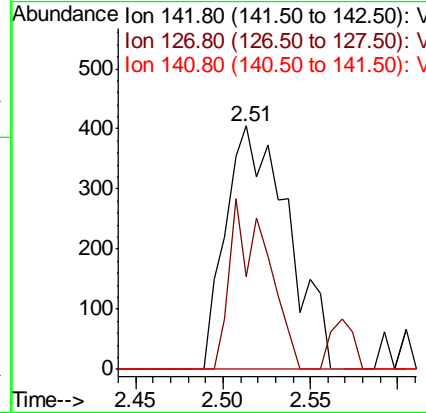
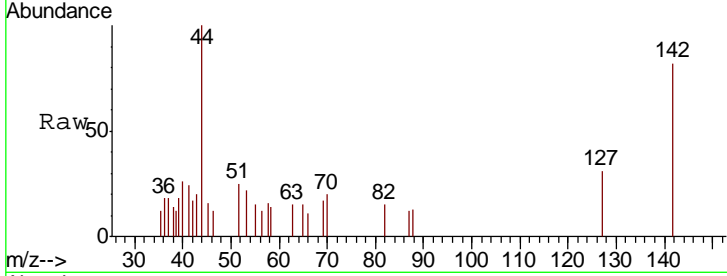




#10
 Methyl Iodide
 Concen: 0.274 ug/l
 RT: 2.51 min Scan# 223
 Delta R.T. 0.01 min
 Lab File: VX010405.D
 Acq: 24 Jun 2019 12:07

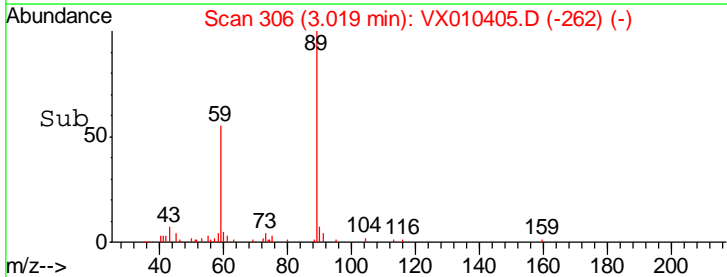
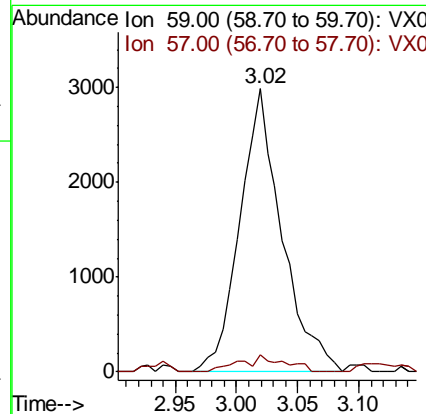
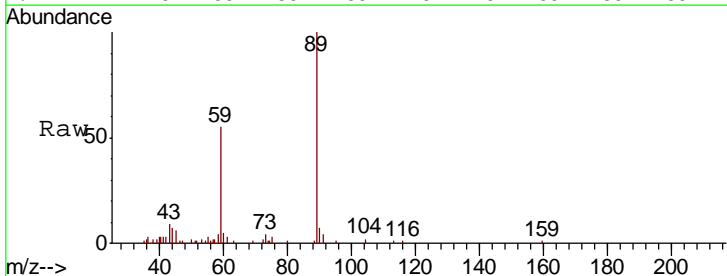
Instrument :
 MSVOA_X
 ClientSampled :
 TWP-B-1

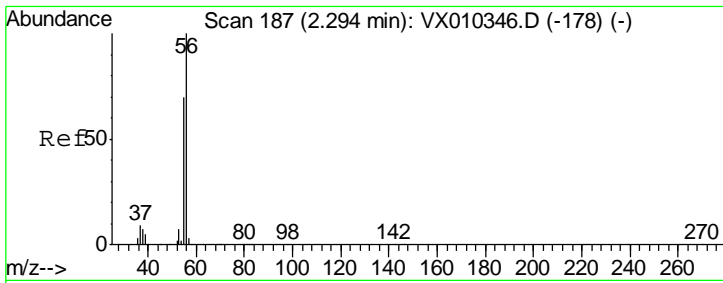
Tgt Ion	Resp	Lower	Upper
142	1009		
127	41.6	31.1	46.7
141	0.0	11.2	16.8#



#11
 Tert butyl alcohol
 Concen: 9.587 ug/l
 RT: 3.02 min Scan# 306
 Delta R.T. -0.03 min
 Lab File: VX010405.D
 Acq: 24 Jun 2019 12:07

Tgt Ion	Resp	Lower	Upper
59	7118		
57	6.3	7.7	11.5#

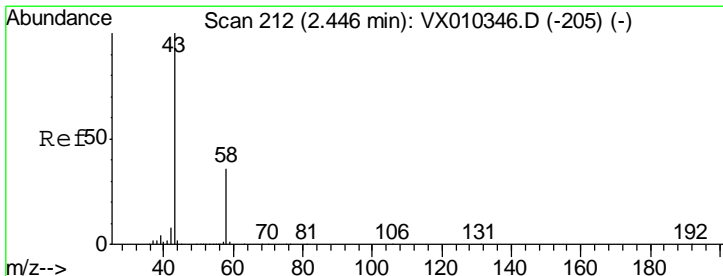
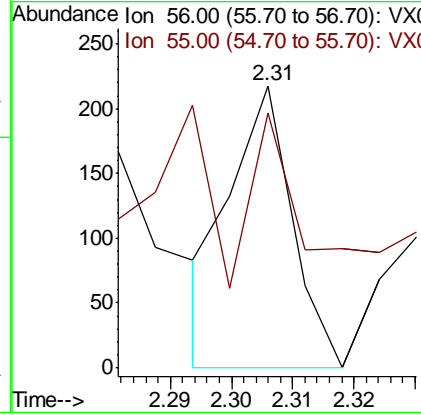
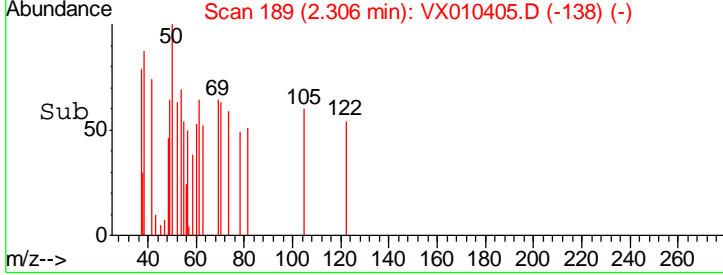
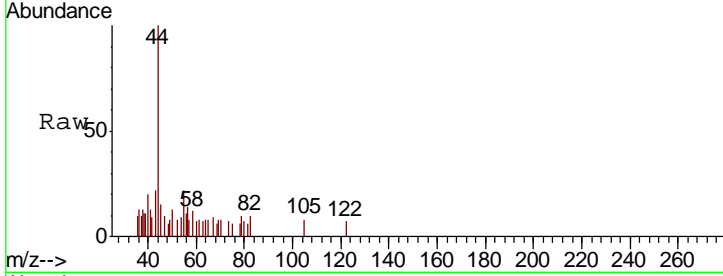




#13
 Acrolein
 Concen: 0.307 ug/l
 RT: 2.31 min Scan# 189
 Delta R.T. 0.01 min
 Lab File: VX010405.D
 Acq: 24 Jun 2019 12:07

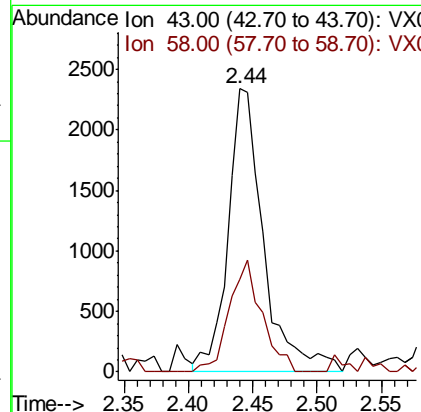
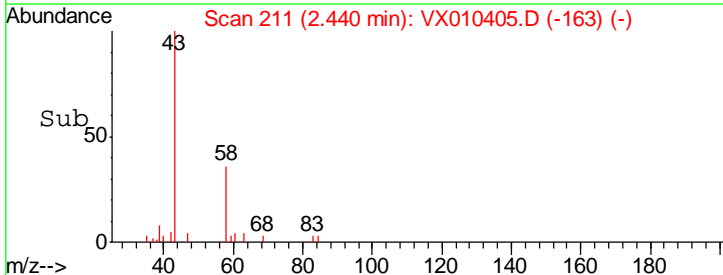
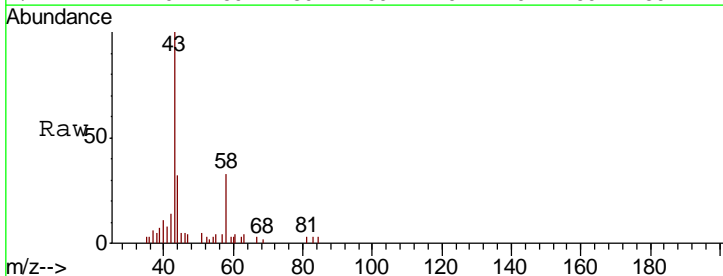
Instrument : MSVOA_X
 ClientSampled : TWP-B-1

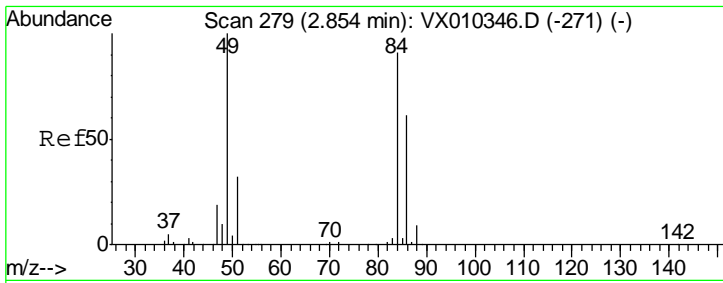
Tgt Ion	Resp	Lower	Upper
56	151		
55	0.0	56.9	85.3#



#16
 Acetone
 Concen: 3.178 ug/l
 RT: 2.44 min Scan# 211
 Delta R.T. -0.01 min
 Lab File: VX010405.D
 Acq: 24 Jun 2019 12:07

Tgt Ion	Resp	Lower	Upper
43	4519		
58	32.9	28.9	43.3

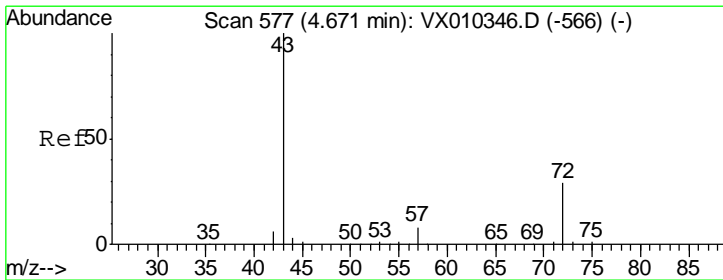
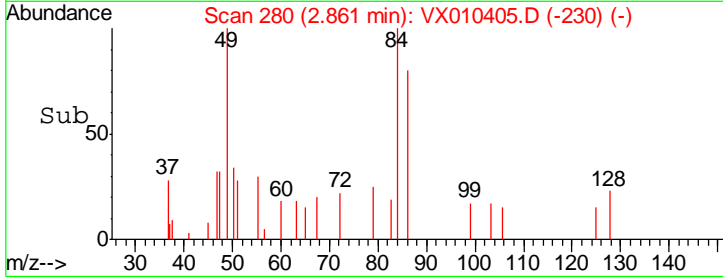
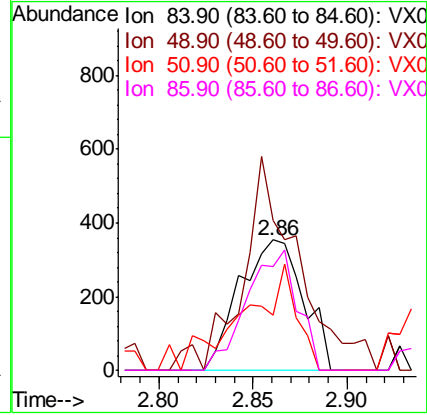
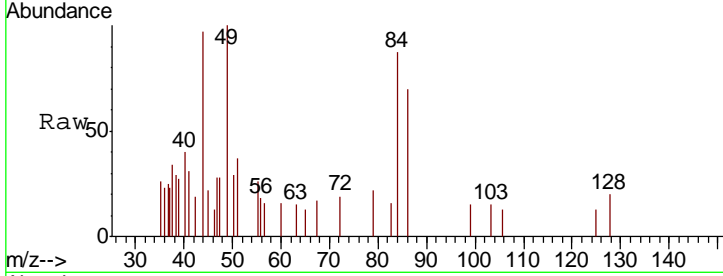




#20
 Methylene Chloride
 Concen: 0.283 ug/l
 RT: 2.86 min Scan# 280
 Delta R.T. 0.01 min
 Lab File: VX010405.D
 Acq: 24 Jun 2019 12:07

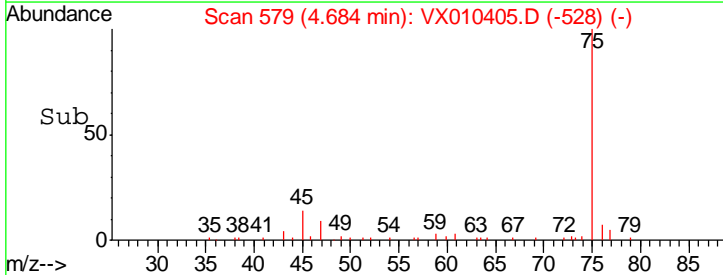
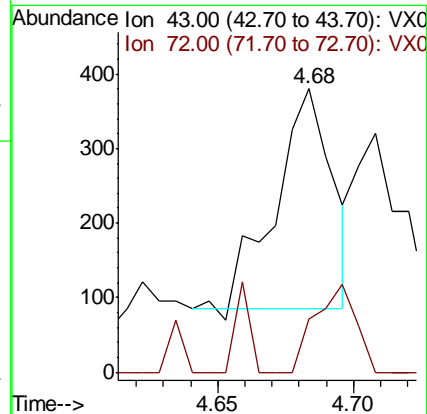
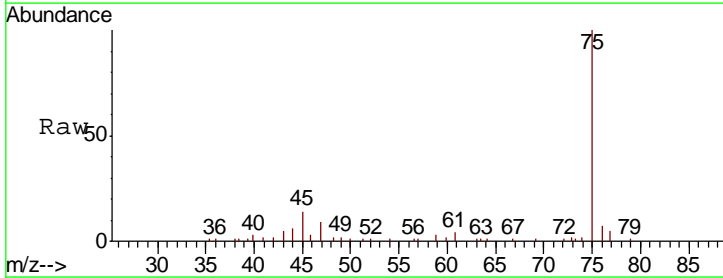
Instrument :
 MSVOA_X
 ClientSampled :
 TWP-B-1

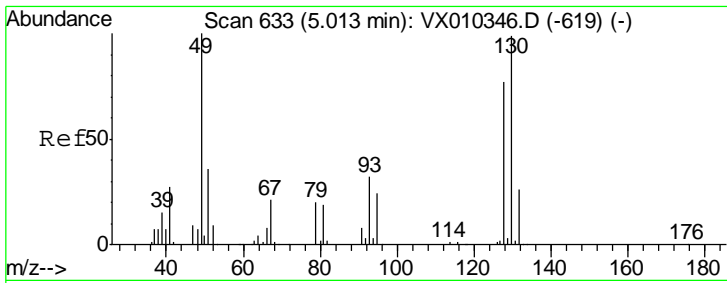
Tgt Ion	Resp	Lower	Upper
84	100		
49	94.9	87.5	131.3
51	42.7	27.7	41.5#
86	79.9	53.4	80.0



#25
 2-Butanone
 Concen: 0.206 ug/l
 RT: 4.68 min Scan# 579
 Delta R.T. 0.01 min
 Lab File: VX010405.D
 Acq: 24 Jun 2019 12:07

Tgt Ion	Resp	Lower	Upper
43	100		
72	24.1	23.3	34.9

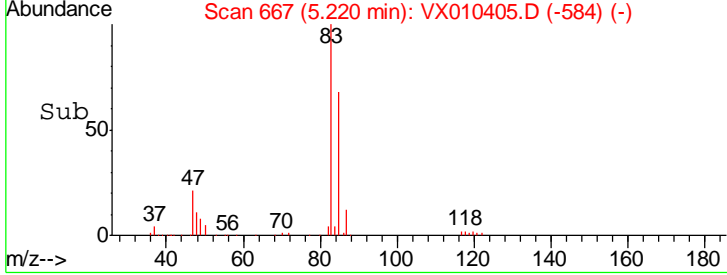
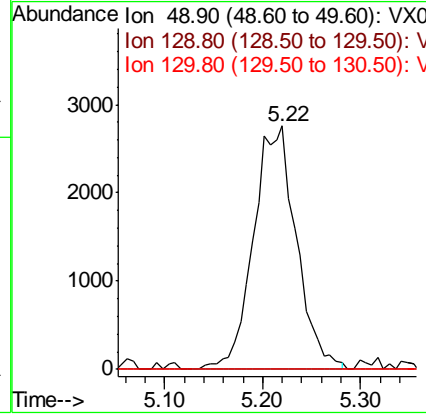
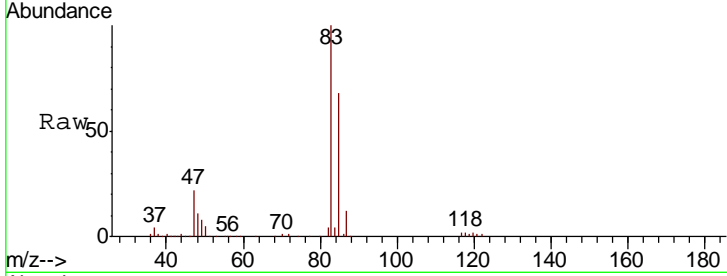




#28
 Bromochloromethane
 Concen: 3.909 ug/l
 RT: 5.22 min Scan# 667
 Delta R.T. 0.21 min
 Lab File: VX010405.D
 Acq: 24 Jun 2019 12:07

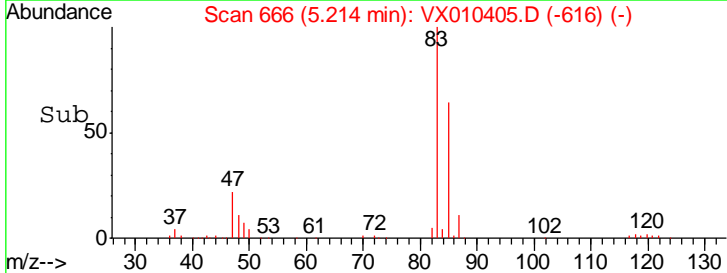
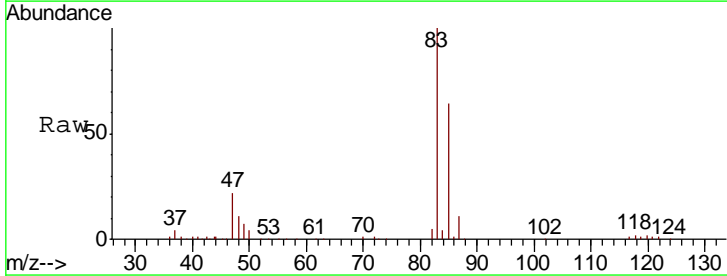
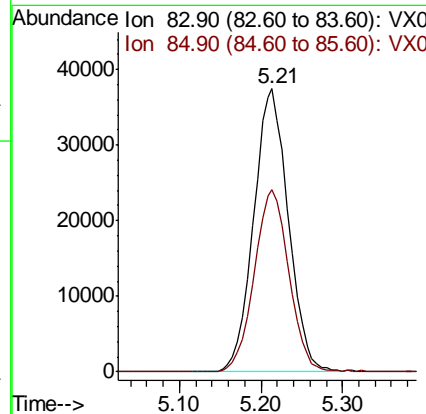
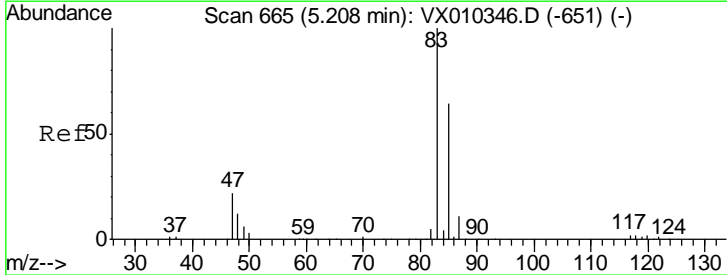
Instrument : MSVOA_X
 ClientSampled : TWP-B-1

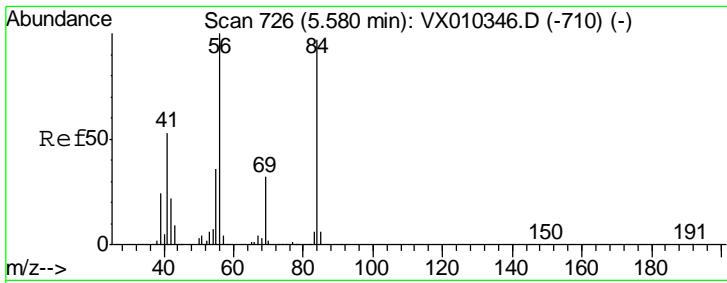
Tgt Ion	Resp	Lower	Upper
49	100		
129	0.0	0.0	5.6
130	0.0	81.4	122.0#



#30
 Chloroform
 Concen: 22.892 ug/l
 RT: 5.21 min Scan# 666
 Delta R.T. 0.01 min
 Lab File: VX010405.D
 Acq: 24 Jun 2019 12:07

Tgt Ion	Resp	Lower	Upper
83	100		
85	64.3	50.9	76.3

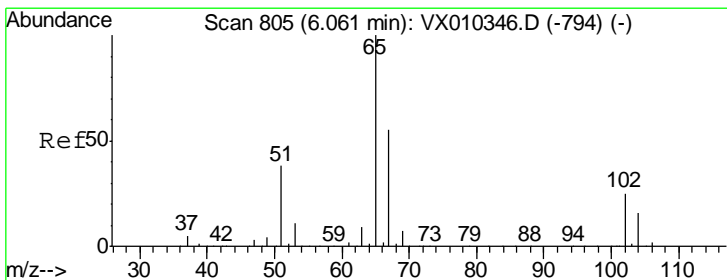
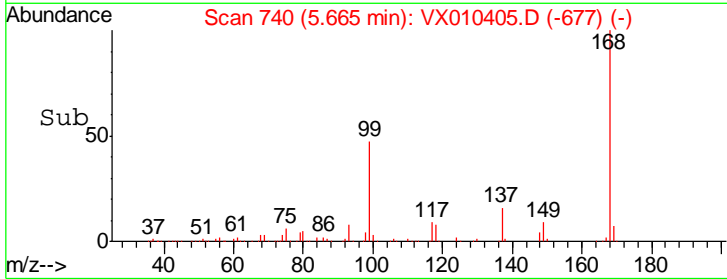
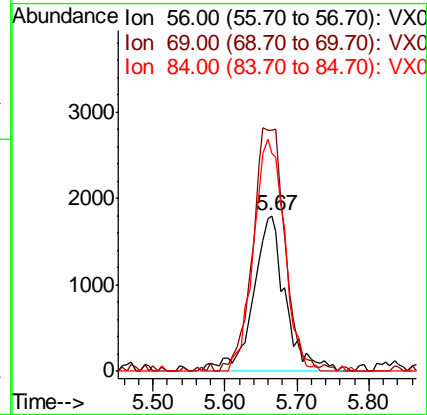
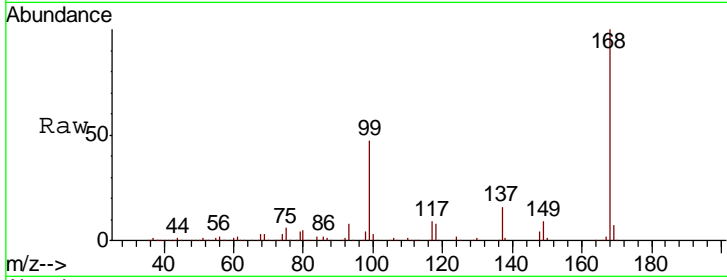




#31
 Cyclohexane
 Concen: 1.359 ug/l
 RT: 5.67 min Scan# 740
 Delta R.T. 0.09 min
 Lab File: VX010405.D
 Acq: 24 Jun 2019 12:07

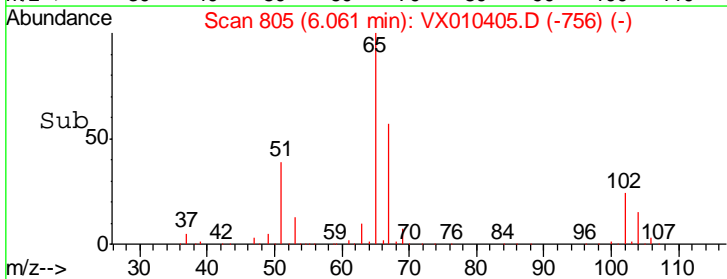
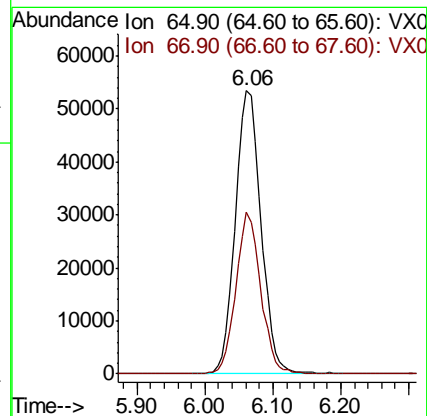
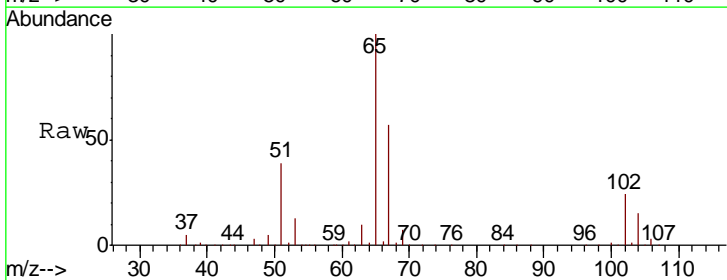
Instrument :
 MSVOA_X
 ClientSampled :
 TWP-B-1

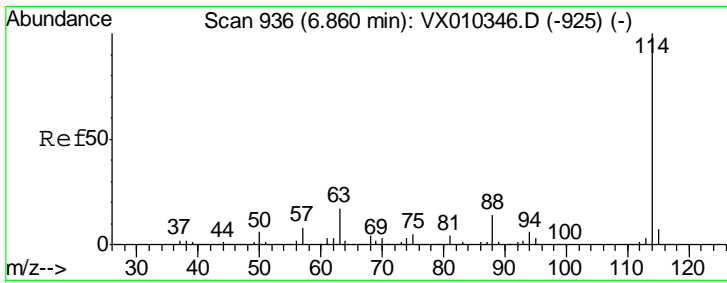
Tgt Ion	Resp	Lower	Upper
56	100		
69	154.8	25.9	38.9#
84	140.0	78.0	117.0#



#33
 1,2-Dichloroethane-d4
 Concen: 49.488 ug/l
 RT: 6.06 min Scan# 805
 Delta R.T. 0.00 min
 Lab File: VX010405.D
 Acq: 24 Jun 2019 12:07

Tgt Ion	Resp	Lower	Upper
65	100		
67	55.0	0.0	110.2

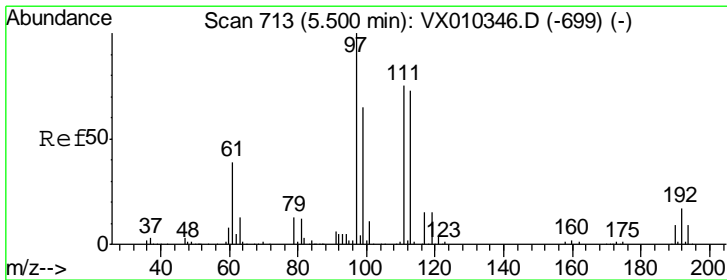
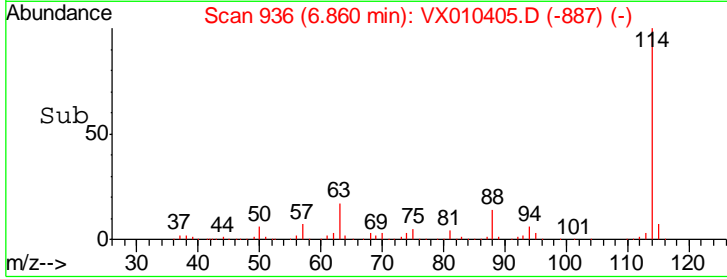
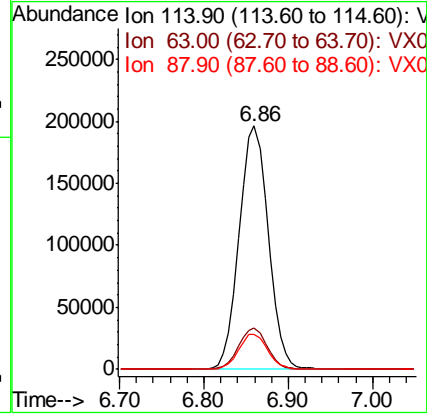
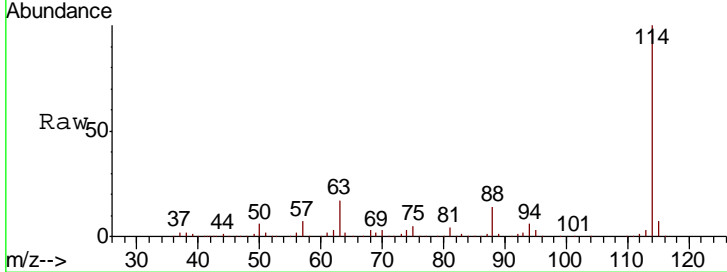




#34
 1,4-Difluorobenzene
 Concen: 50.000 ug/l
 RT: 6.86 min Scan# 936
 Delta R.T. 0.00 min
 Lab File: VX010405.D
 Acq: 24 Jun 2019 12:07

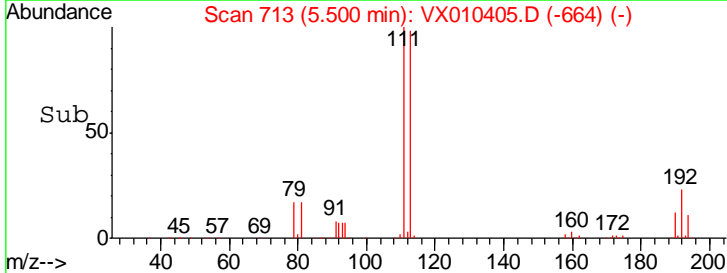
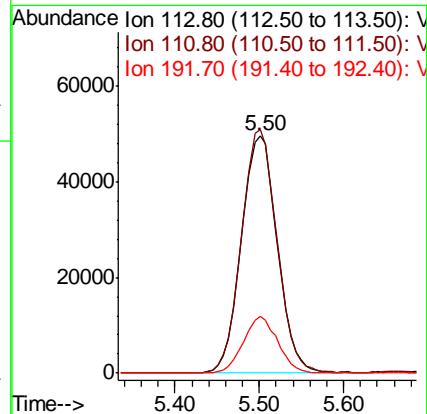
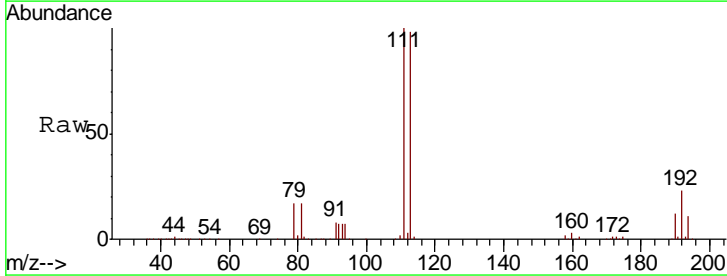
Instrument :
 MSVOA_X
 ClientSampled :
 TWP-B-1

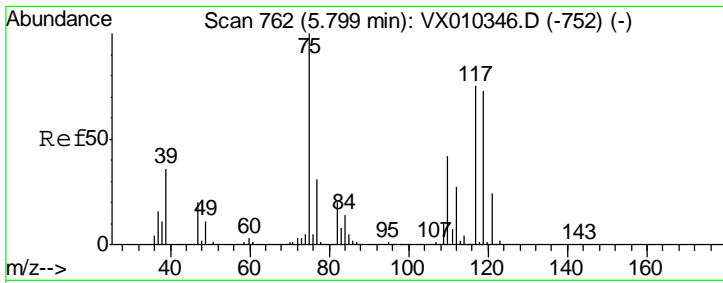
Tgt Ion	Resp	Lower	Upper
114	459422		
63	17.1	0.0	33.8
88	14.2	0.0	27.6



#35
 Dibromofluoromethane
 Concen: 51.020 ug/l
 RT: 5.50 min Scan# 713
 Delta R.T. 0.00 min
 Lab File: VX010405.D
 Acq: 24 Jun 2019 12:07

Tgt Ion	Resp	Lower	Upper
113	143413		
111	101.7	81.2	121.8
192	22.8	18.6	27.8

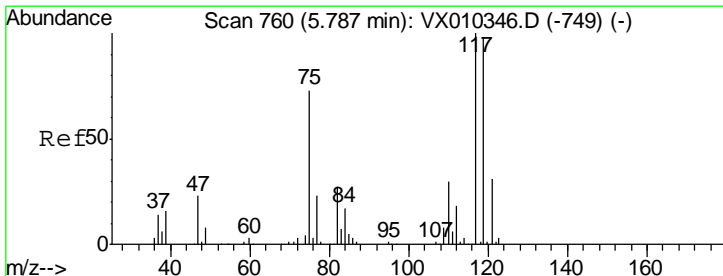
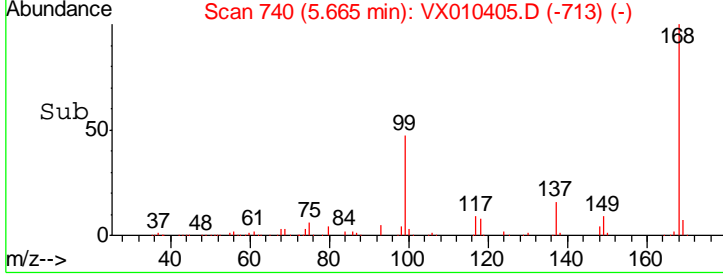
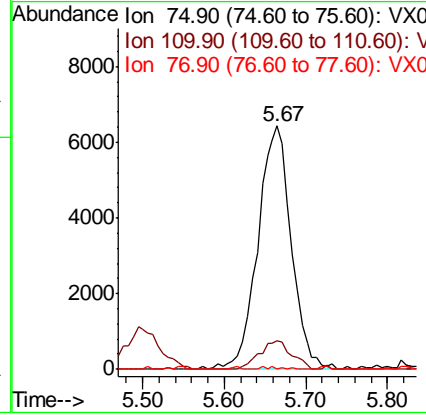
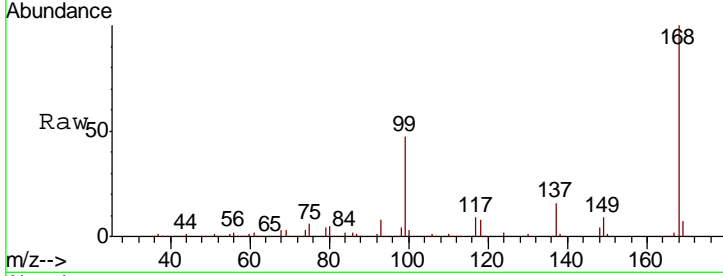




#36
 1,1-Dichloropropene
 Concen: 5.014 ug/l
 RT: 5.67 min Scan# 740
 Delta R.T. -0.13 min
 Lab File: VX010405.D
 Acq: 24 Jun 2019 12:07

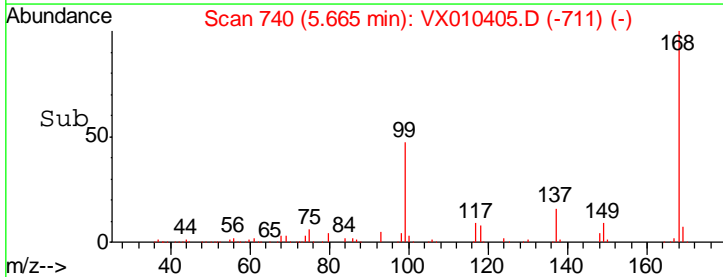
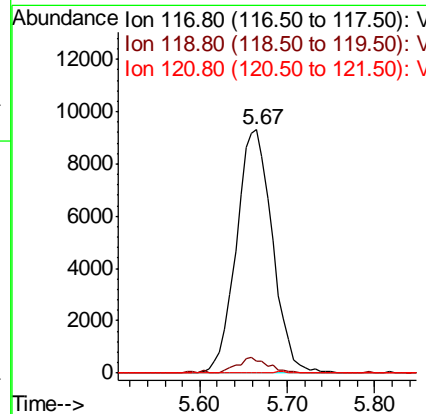
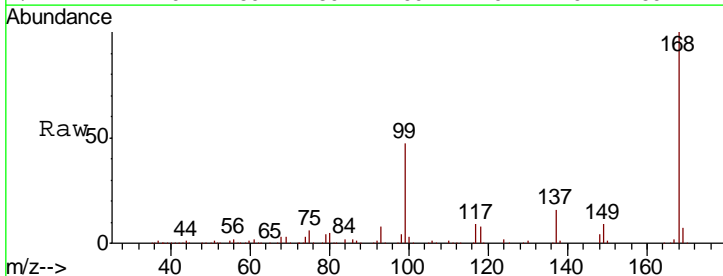
Instrument :
 MSVOA_X
 ClientSampled :
 TWP-B-1

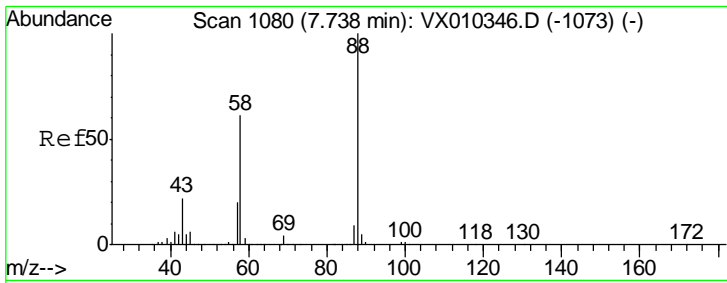
Tgt Ion	Resp	Lower	Upper
75	18304		
110	11.2	20.8	62.2#
77	0.1	25.4	38.0#



#38
 Carbon Tetrachloride
 Concen: 6.716 ug/l
 RT: 5.67 min Scan# 740
 Delta R.T. -0.12 min
 Lab File: VX010405.D
 Acq: 24 Jun 2019 12:07

Tgt Ion	Resp	Lower	Upper
117	26550		
119	4.9	78.2	117.4#
121	0.0	24.7	37.1#

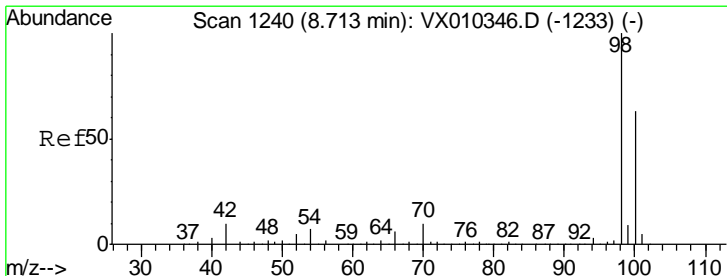
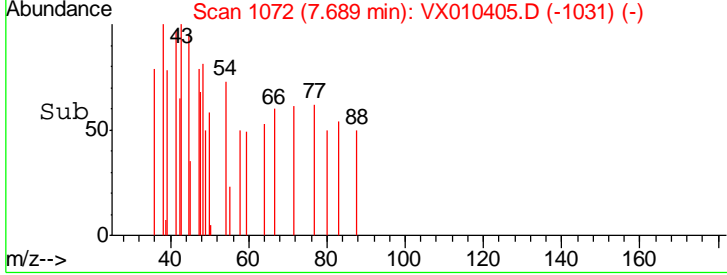
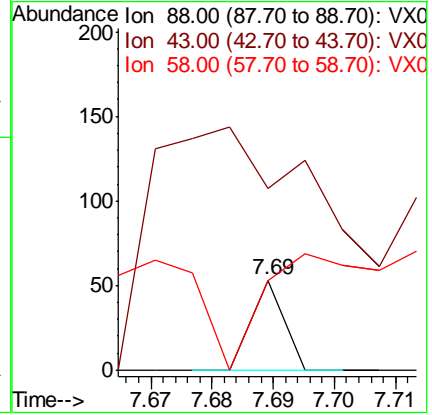
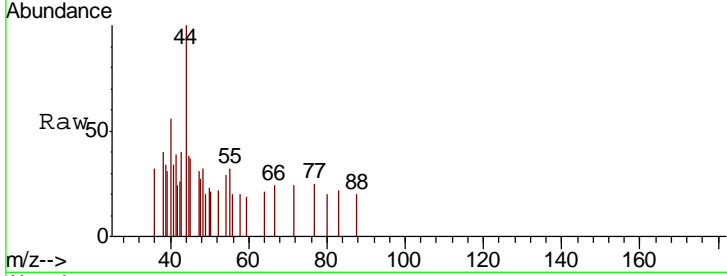




#49
 1,4-Dioxane
 Concen: 0.228 ug/l
 RT: 7.69 min Scan# 1072
 Delta R.T. -0.05 min
 Lab File: VX010405.D
 Acq: 24 Jun 2019 12:07

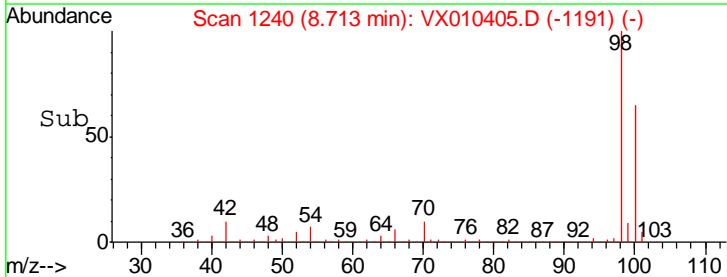
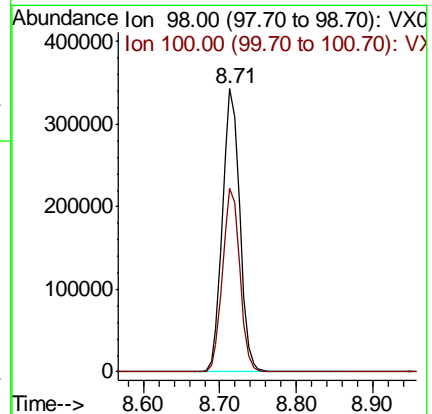
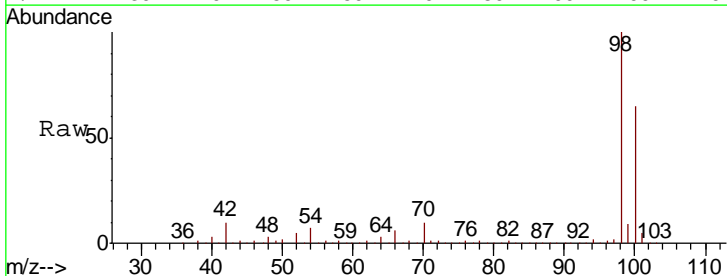
Instrument : MSVOA_X
 ClientSampled : TWP-B-1

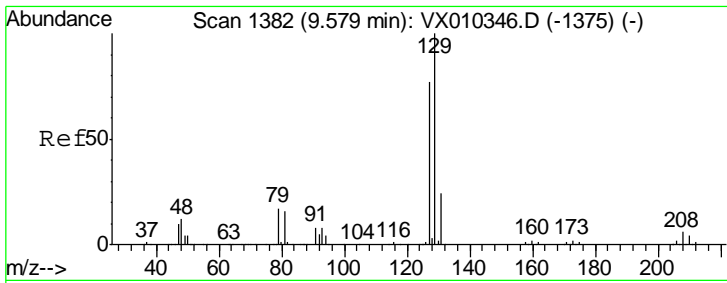
Tgt Ion	Resp	Lower	Upper
88	100		
43	1515.8	20.2	30.2#
58	0.0	49.5	74.3#



#50
 Toluene-d8
 Concen: 50.204 ug/l
 RT: 8.71 min Scan# 1240
 Delta R.T. 0.00 min
 Lab File: VX010405.D
 Acq: 24 Jun 2019 12:07

Tgt Ion	Resp	Lower	Upper
98	100		
100	64.7	51.6	77.4

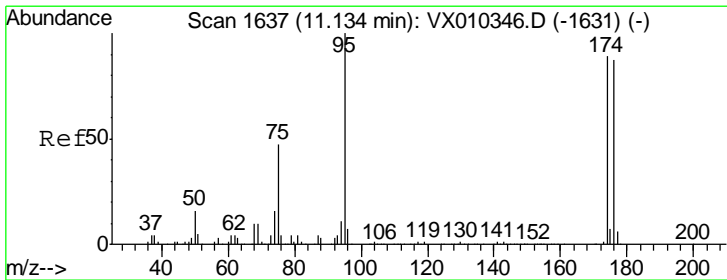
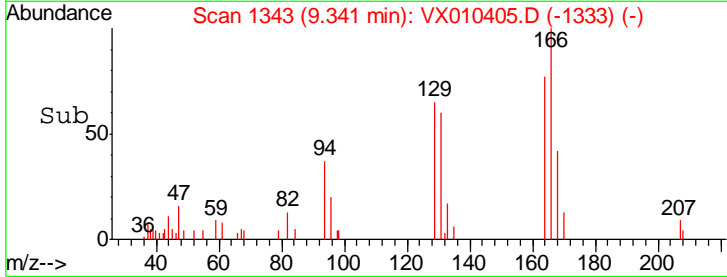
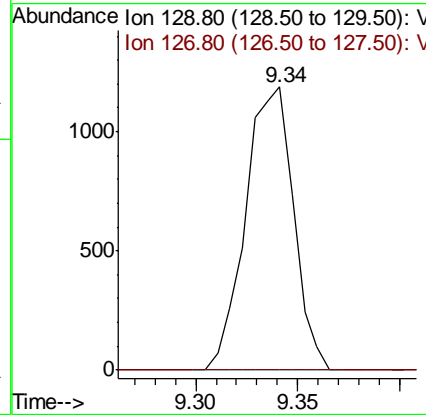
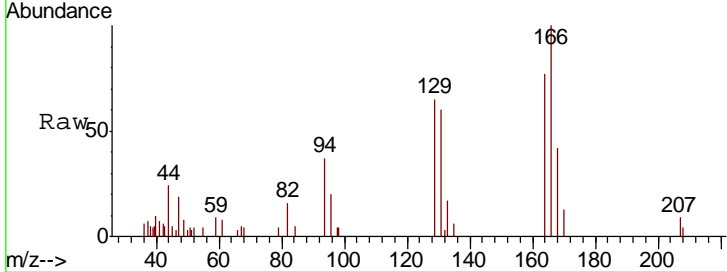




#60
 Dibromochloromethane
 Concen: 0.560 ug/l
 RT: 9.34 min Scan# 1343
 Delta R.T. -0.24 min
 Lab File: VX010405.D
 Acq: 24 Jun 2019 12:07

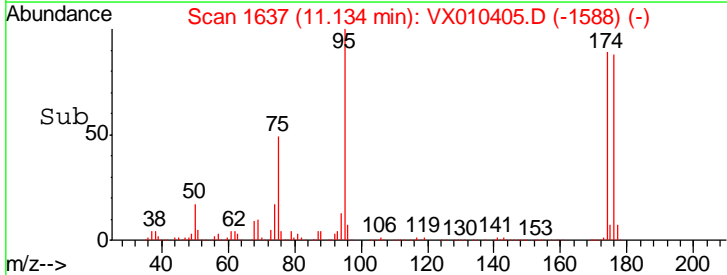
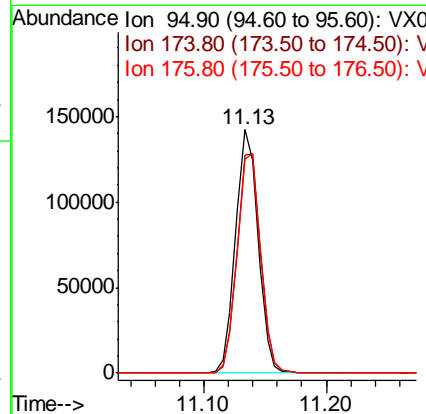
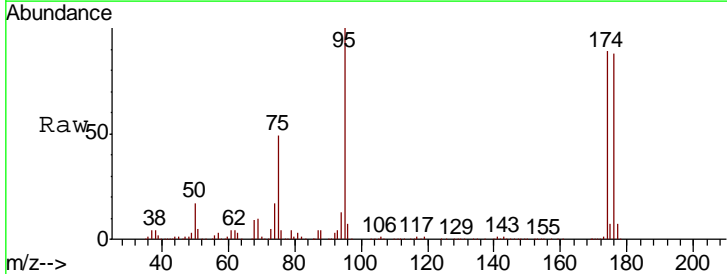
Instrument :
 MSVOA_X
 ClientSampled :
 TWP-B-1

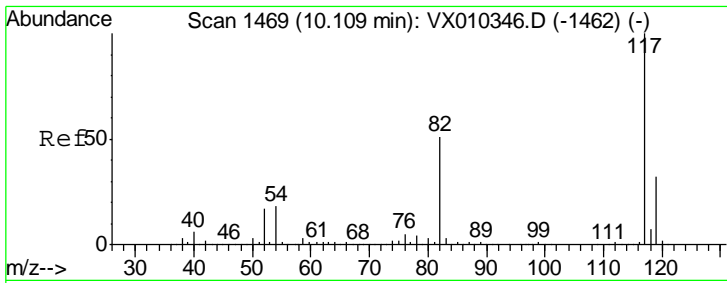
Tgt Ion: 129 Resp: 1936
 Ion Ratio Lower Upper
 129 100
 127 0.0 38.4 115.1#



#62
 4-Bromofluorobenzene
 Concen: 46.531 ug/l
 RT: 11.13 min Scan# 1637
 Delta R.T. 0.00 min
 Lab File: VX010405.D
 Acq: 24 Jun 2019 12:07

Tgt Ion: 95 Resp: 180655
 Ion Ratio Lower Upper
 95 100
 174 94.1 0.0 187.6
 176 92.8 0.0 184.0

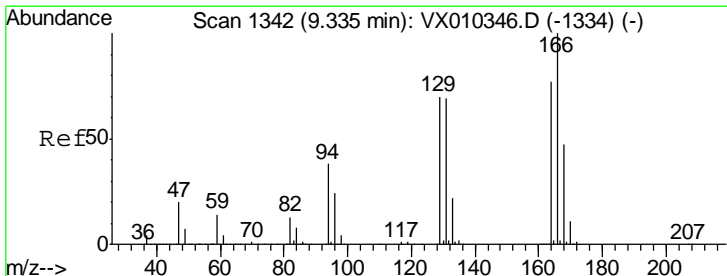
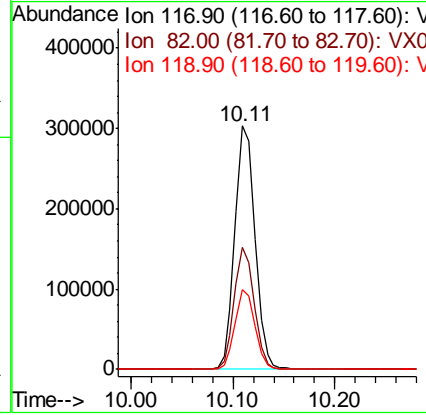
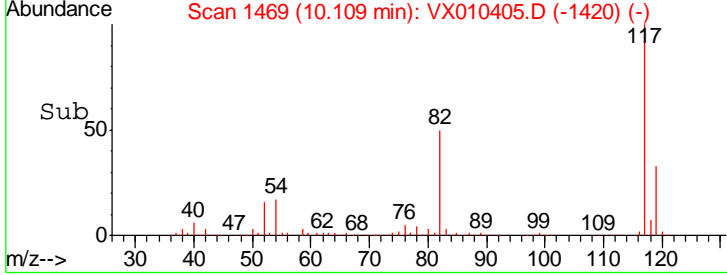
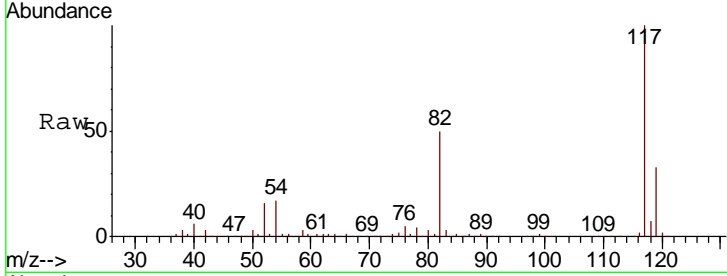




#63
 Chlorobenzene-d5
 Concen: 50.000 ug/l
 RT: 10.11 min Scan# 1469
 Delta R.T. 0.00 min
 Lab File: VX010405.D
 Acq: 24 Jun 2019 12:07

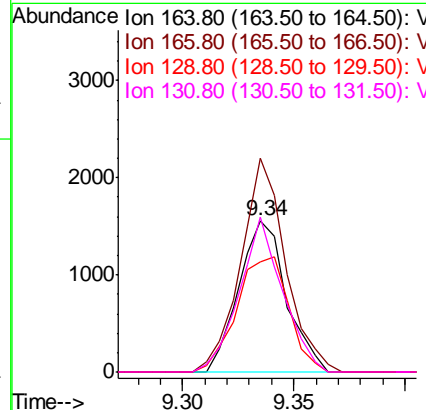
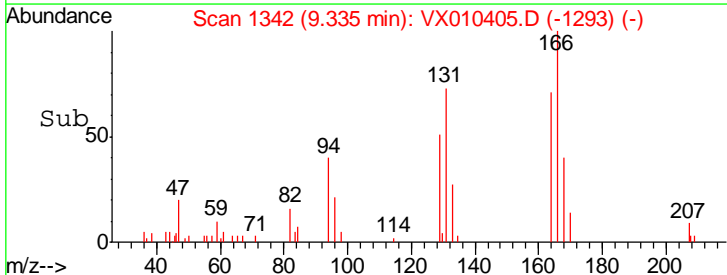
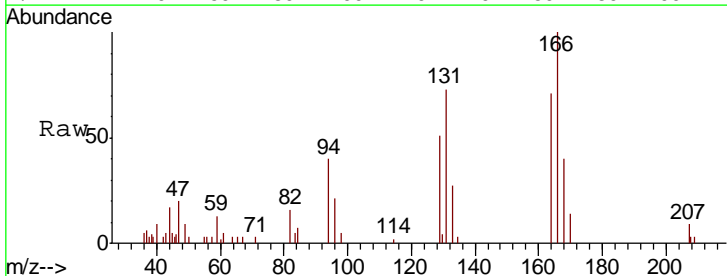
Instrument :
 MSVOA_X
 ClientSampled :
 TWP-B-1

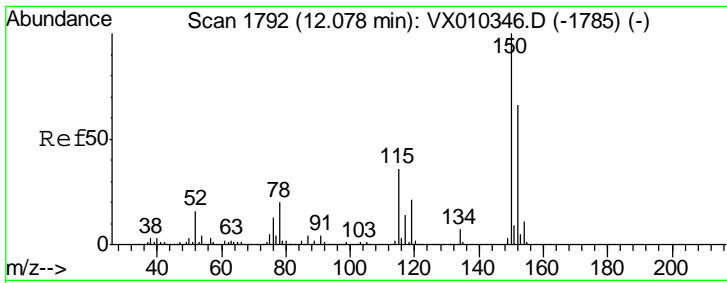
Tgt Ion	Resp	Lower	Upper
117	413474		
82	50.2	41.2	61.8
119	32.8	25.5	38.3



#64
 Tetrachloroethene
 Concen: 0.693 ug/l
 RT: 9.34 min Scan# 1342
 Delta R.T. 0.00 min
 Lab File: VX010405.D
 Acq: 24 Jun 2019 12:07

Tgt Ion	Resp	Lower	Upper
164	2316		
166	141.1	103.6	155.4
129	72.5	73.0	109.4#
131	102.6	71.0	106.4

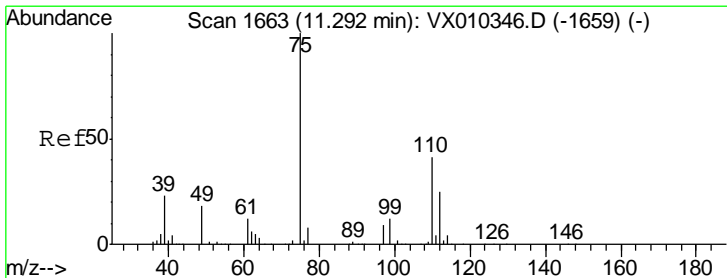
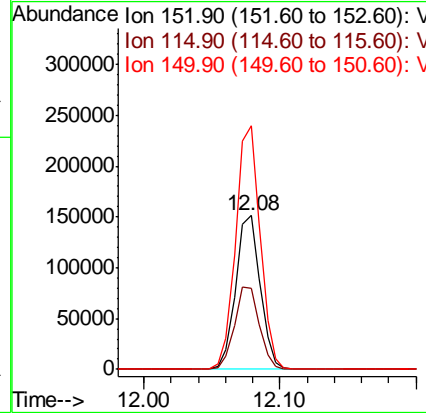
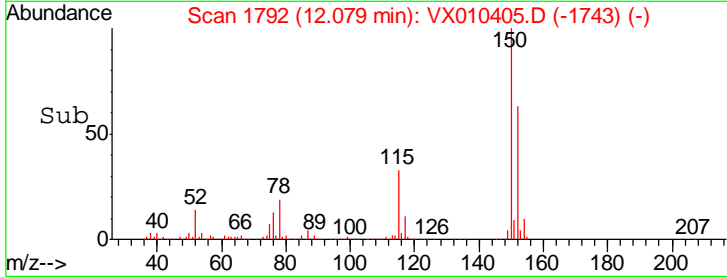
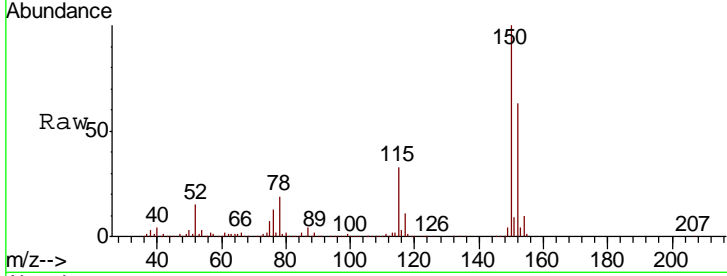




#72
 1,4-Dichlorobenzene-d4
 Concen: 50.000 ug/l
 RT: 12.08 min Scan# 1792
 Delta R.T. 0.00 min
 Lab File: VX010405.D
 Acq: 24 Jun 2019 12:07

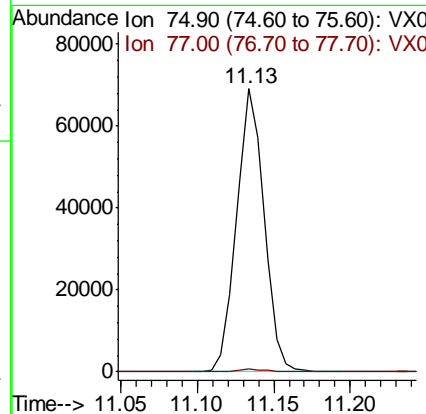
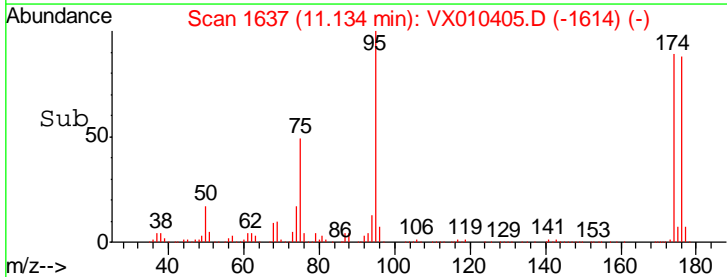
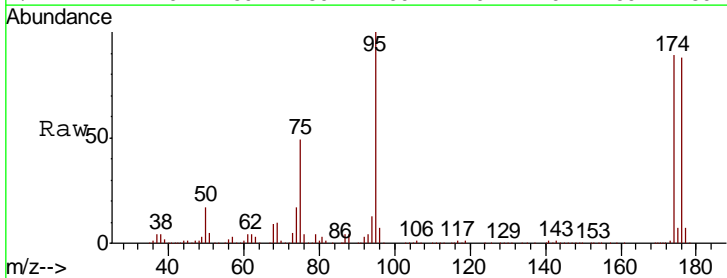
Instrument :
 MSVOA_X
 ClientSampled :
 TWP-B-1

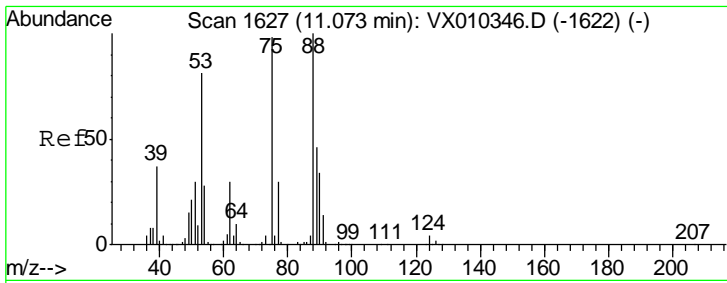
Tgt Ion	Resp	Lower	Upper
152	100		
115	54.2	38.6	115.7
150	157.9	0.0	347.4



#76
 1,2,3-Trichloropropane
 Concen: 24.975 ug/l
 RT: 11.13 min Scan# 1637
 Delta R.T. -0.16 min
 Lab File: VX010405.D
 Acq: 24 Jun 2019 12:07

Tgt Ion	Resp	Lower	Upper
75	100		
77	1.2	22.6	67.8#





#81
 trans-1,4-Dichloro-2-butene
 Concen: 58.264 ug/l
 RT: 11.13 min Scan# 1637
 Delta R.T. 0.06 min
 Lab File: VX010405.D
 Acq: 24 Jun 2019 12:07

Instrument :
 MSVOA_X
 ClientSampled :
 TWP-B-1

Tot Ion	Ion	Resp	Lower	Upper
75	100			
53	0.2	66.1	99.1#	
89	0.0	37.8	56.6#	

