

Data Path : Z:\voasrv\HPCHEM1\MSVOA\_X\Data\VX062521\  
 Data File : VX022914.D  
 Acq On : 25 Jun 2021 11:37  
 Operator : JC/MD  
 Sample : VX0625WBL01  
 Misc : 5.0mL/MSVOA\_X/WATER  
 ALS Vial : 4 Sample Multiplier: 1

Instrument :  
 MSVOA\_X  
 ClientSampled :

Quant Time: Jun 26 03:52:06 2021  
 Quant Method : Z:\voasrv\HPCHEM1\MSVOA\_X\Method\82X062321W.M  
 Quant Title : SW846 8260  
 QLast Update : Wed Jun 23 19:12:26 2021  
 Response via : Initial Calibration

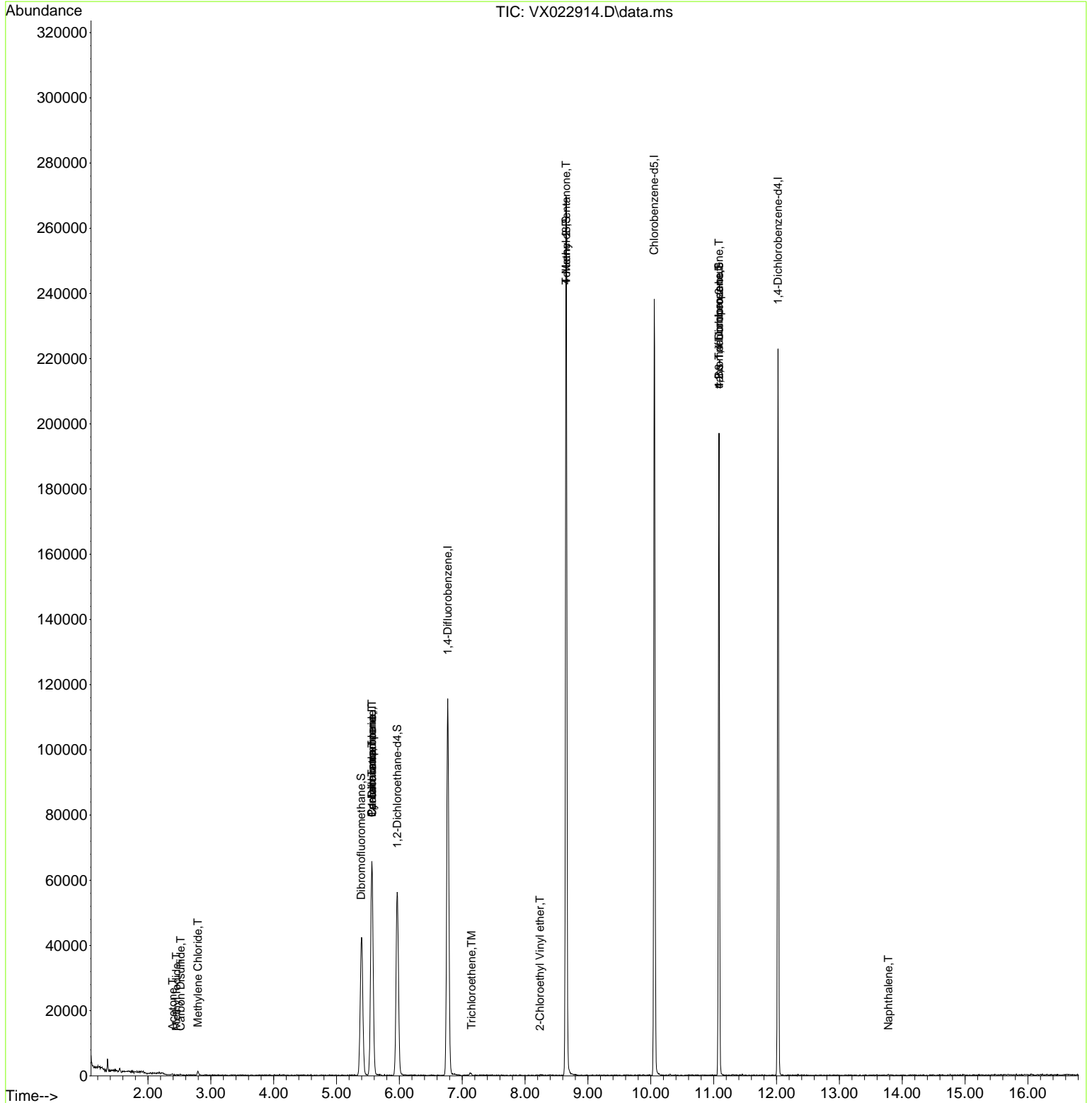
| Compound                      | R.T.   | QIon           | Response | Conc  | Units   | Dev(Min) |
|-------------------------------|--------|----------------|----------|-------|---------|----------|
| -----                         |        |                |          |       |         |          |
| Internal Standards            |        |                |          |       |         |          |
| 1) Pentafluorobenzene         | 5.562  | 168            | 54762    | 50.00 | ug/l    | # 0.00   |
| 34) 1,4-Difluorobenzene       | 6.769  | 114            | 112060   | 50.00 | ug/l    | 0.00     |
| 63) Chlorobenzene-d5          | 10.055 | 117            | 103206   | 50.00 | ug/l    | 0.00     |
| 72) 1,4-Dichlorobenzene-d4    | 12.024 | 152            | 39066    | 50.00 | ug/l    | 0.00     |
| System Monitoring Compounds   |        |                |          |       |         |          |
| 33) 1,2-Dichloroethane-d4     | 5.964  | 65             | 54302    | 54.64 | ug/l    | 0.00     |
| Spiked Amount                 | 50.000 | Range 78 - 117 | Recovery | =     | 109.28% |          |
| 35) Dibromofluoromethane      | 5.391  | 113            | 35841    | 50.37 | ug/l    | 0.00     |
| Spiked Amount                 | 50.000 | Range 75 - 124 | Recovery | =     | 100.74% |          |
| 50) Toluene-d8                | 8.653  | 98             | 149658   | 53.66 | ug/l    | 0.00     |
| Spiked Amount                 | 50.000 | Range 92 - 112 | Recovery | =     | 107.32% |          |
| 62) 4-Bromofluorobenzene      | 11.085 | 95             | 51628    | 49.60 | ug/l    | 0.00     |
| Spiked Amount                 | 50.000 | Range 83 - 123 | Recovery | =     | 99.20%  |          |
| Target Compounds              |        |                |          |       |         |          |
|                               |        |                |          |       |         | Qvalue   |
| 10) Methyl Iodide             | 2.453  | 142            | 121      | 4.01  | ug/l    | # 42     |
| 16) Acetone                   | 2.392  | 43             | 270      | 0.61  | ug/l    | # 40     |
| 17) Carbon Disulfide          | 2.520  | 76             | 168      | 3.60  | ug/l    | # 75     |
| 20) Methylene Chloride        | 2.794  | 84             | 519      | 0.96  | ug/l    | # 82     |
| 31) Cyclohexane               | 5.562  | 56             | 1799     | 1.28  | ug/l    | # 19     |
| 36) 1,1-Dichloropropene       | 5.562  | 75             | 5836     | 4.90  | ug/l    | # 49     |
| 38) Carbon Tetrachloride      | 5.562  | 117            | 6649     | 6.66  | ug/l    | # 12     |
| 44) Trichloroethene           | 7.147  | 130            | 348      | 0.43  | ug/l    | 44       |
| 51) 4-Methyl-2-Pentanone      | 8.653  | 43             | 934      | 0.68  | ug/l    | # 1      |
| 58) 2-Chloroethyl Vinyl ether | 8.238  | 63             | 128      | 5.37  | ug/l    | # 45     |
| 76) 1,2,3-Trichloropropane    | 11.085 | 75             | 28561    | 27.68 | ug/l    | # 38     |
| 81) trans-1,4-Dichloro-2-b... | 11.085 | 75             | 28561    | 71.54 | ug/l    | # 12     |
| 95) Naphthalene               | 13.780 | 128            | 168      | 1.97  | ug/l    | # 69     |
| -----                         |        |                |          |       |         |          |

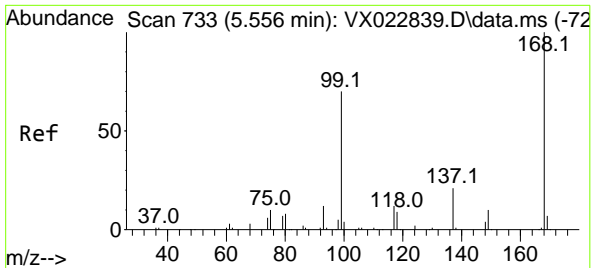
(#) = qualifier out of range (m) = manual integration (+) = signals summed

Data Path : Z:\voasrv\HPCHEM1\MSVOA\_X\Data\VX062521\  
 Data File : VX022914.D  
 Acq On : 25 Jun 2021 11:37  
 Operator : JC/MD  
 Sample : VX0625WBL01  
 Misc : 5.0mL/MSVOA\_X/WATER  
 ALS Vial : 4 Sample Multiplier: 1

Instrument :  
 MSVOA\_X  
 ClientSampled :

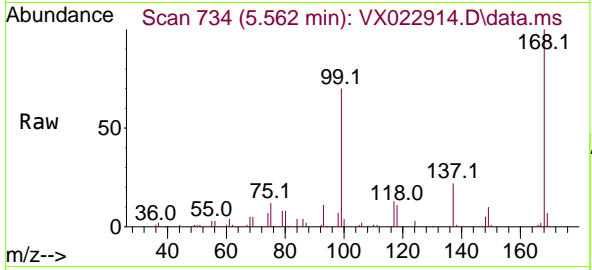
Quant Time: Jun 26 03:52:06 2021  
 Quant Method : Z:\voasrv\HPCHEM1\MSVOA\_X\Method\82X062321W.M  
 Quant Title : SW846 8260  
 QLast Update : Wed Jun 23 19:12:26 2021  
 Response via : Initial Calibration



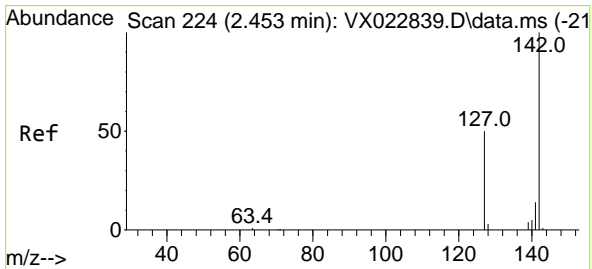
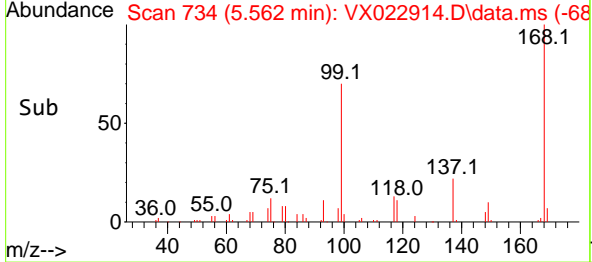
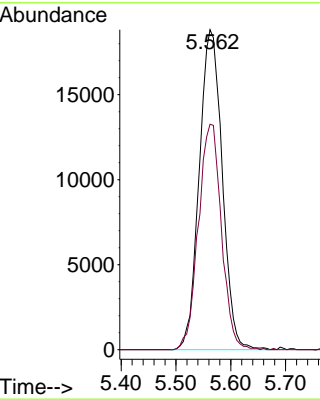


#1  
 Pentafluorobenzene  
 Concen: 50.00 ug/l  
 RT: 5.562 min Scan# 734  
 Delta R.T. 0.006 min  
 Lab File: VX022914.D  
 Acq: 25 Jun 2021 11:37

Instrument :  
 MSVOA\_X  
 ClientSampled :

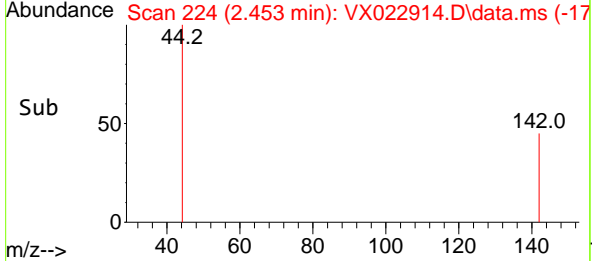
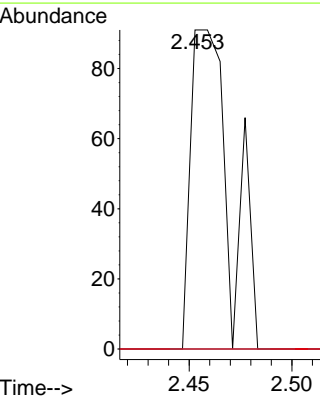
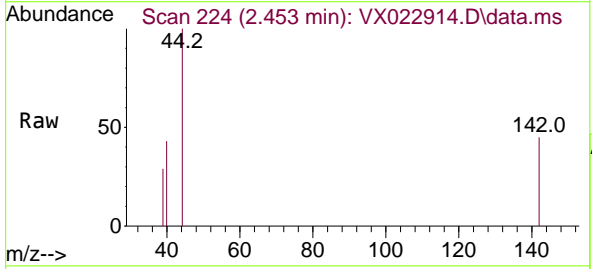


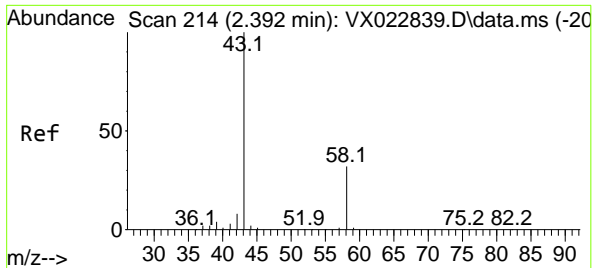
Tgt Ion:168 Resp: 54762  
 Ion Ratio Lower Upper  
 168 100  
 99 70.5 45.8 68.6#



#10  
 Methyl Iodide  
 Concen: 4.01 ug/l  
 RT: 2.453 min Scan# 224  
 Delta R.T. -0.000 min  
 Lab File: VX022914.D  
 Acq: 25 Jun 2021 11:37

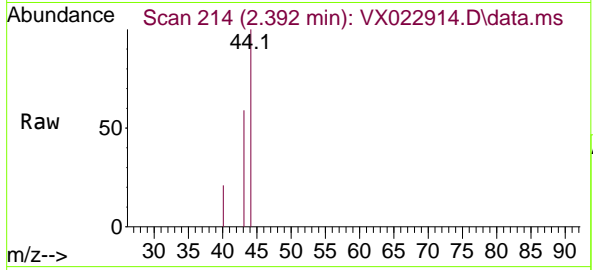
Tgt Ion:142 Resp: 121  
 Ion Ratio Lower Upper  
 142 100  
 127 0.0 33.3 49.9#  
 141 0.0 11.4 17.0#



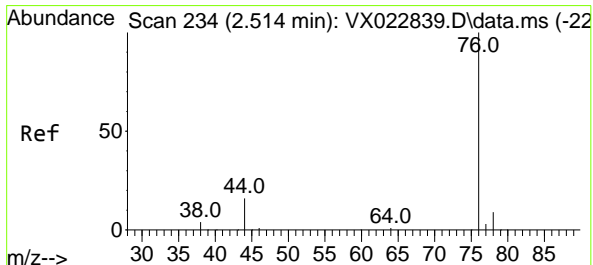
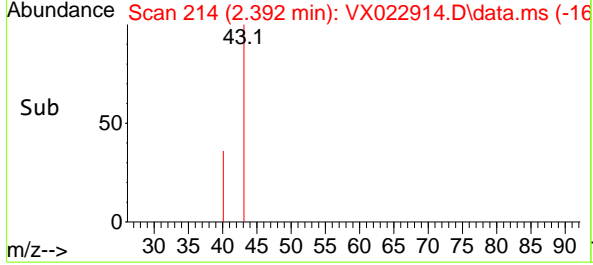
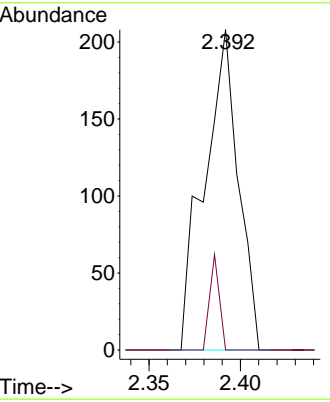


#16  
 Acetone  
 Concen: 0.61 ug/l  
 RT: 2.392 min Scan# 214  
 Delta R.T. -0.000 min  
 Lab File: VX022914.D  
 Acq: 25 Jun 2021 11:37

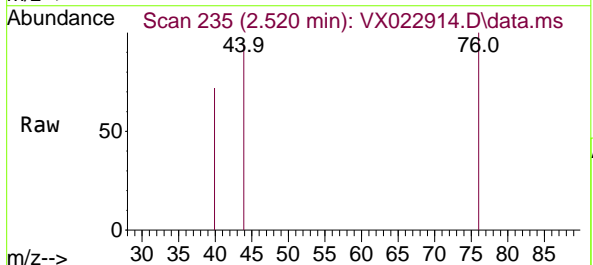
Instrument :  
 MSVOA\_X  
 ClientSampled :



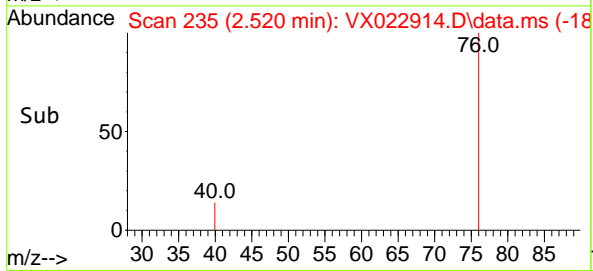
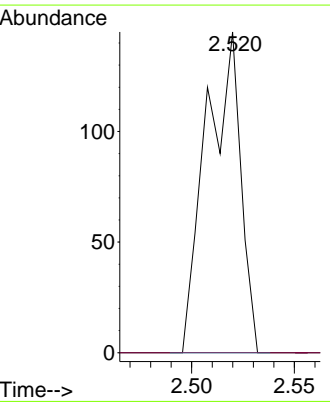
Tgt Ion: 43 Resp: 270  
 Ion Ratio Lower Upper  
 43 100  
 58 0.0 27.8 41.8#

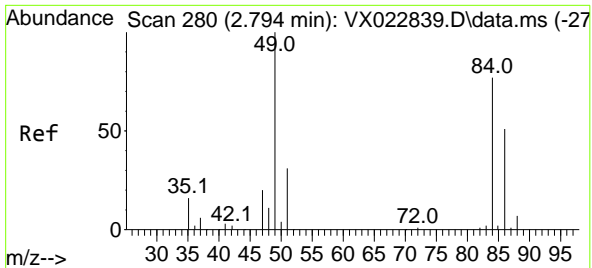


#17  
 Carbon Disulfide  
 Concen: 3.60 ug/l  
 RT: 2.520 min Scan# 235  
 Delta R.T. 0.006 min  
 Lab File: VX022914.D  
 Acq: 25 Jun 2021 11:37



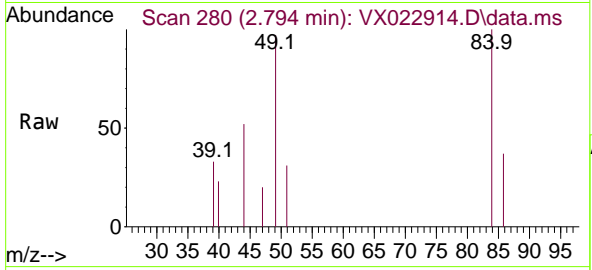
Tgt Ion: 76 Resp: 168  
 Ion Ratio Lower Upper  
 76 100  
 78 0.0 7.2 10.8#





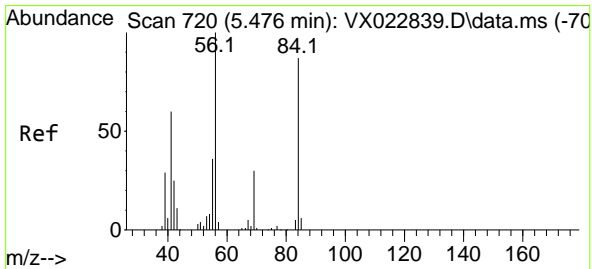
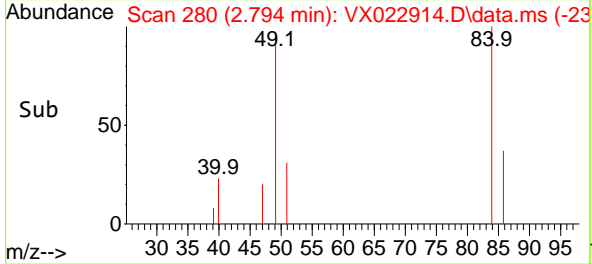
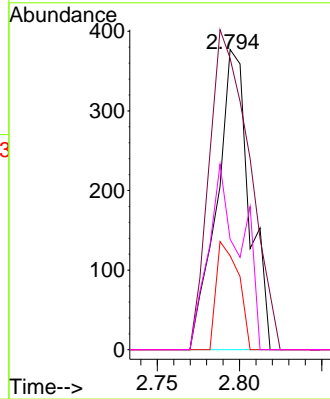
#20  
Methylene Chloride  
Concen: 0.96 ug/l  
RT: 2.794 min Scan# 280  
Delta R.T. 0.000 min  
Lab File: VX022914.D  
Acq: 25 Jun 2021 11:37

Instrument :  
MSVOA\_X  
ClientSampled :

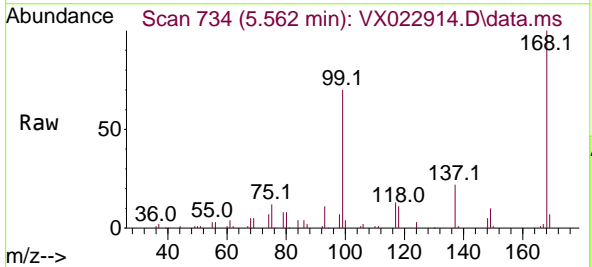


Tgt Ion: 84 Resp: 519

| Ion | Ratio | Lower | Upper |
|-----|-------|-------|-------|
| 84  | 100   |       |       |
| 49  | 97.1  | 88.6  | 132.8 |
| 51  | 31.3  | 27.0  | 40.6  |
| 86  | 36.9  | 50.3  | 75.5# |

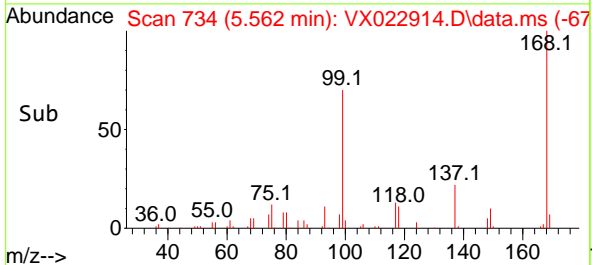
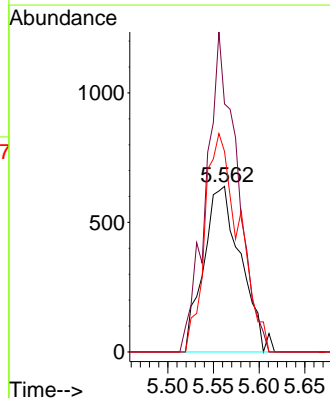


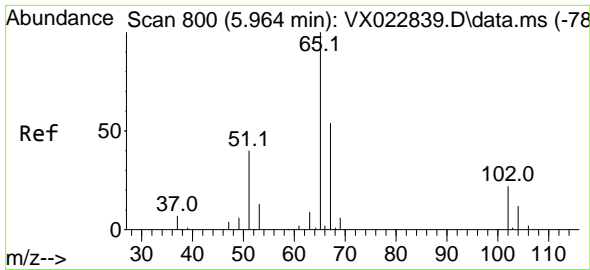
#31  
Cyclohexane  
Concen: 1.28 ug/l  
RT: 5.562 min Scan# 734  
Delta R.T. 0.086 min  
Lab File: VX022914.D  
Acq: 25 Jun 2021 11:37



Tgt Ion: 56 Resp: 1799

| Ion | Ratio | Lower | Upper  |
|-----|-------|-------|--------|
| 56  | 100   |       |        |
| 69  | 149.8 | 25.3  | 37.9#  |
| 84  | 121.1 | 71.4  | 107.0# |

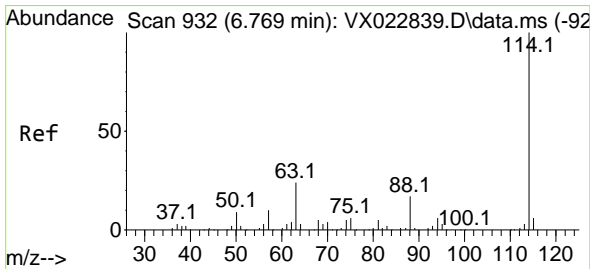
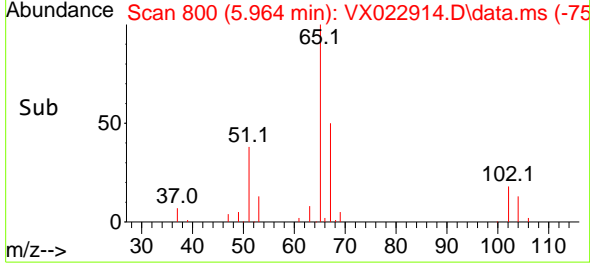
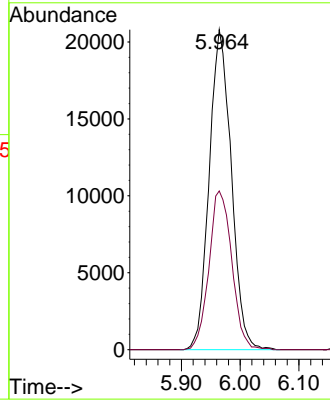
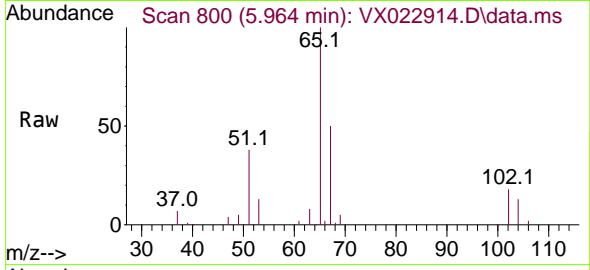




#33  
 1,2-Dichloroethane-d4  
 Concen: 54.64 ug/l  
 RT: 5.964 min Scan# 800  
 Delta R.T. 0.000 min  
 Lab File: VX022914.D  
 Acq: 25 Jun 2021 11:37

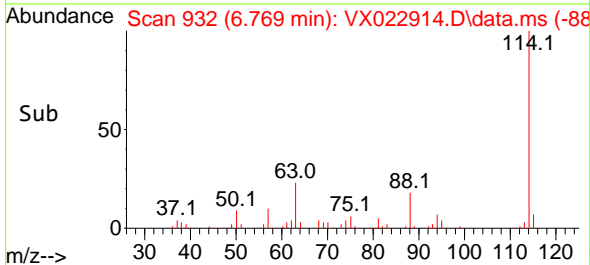
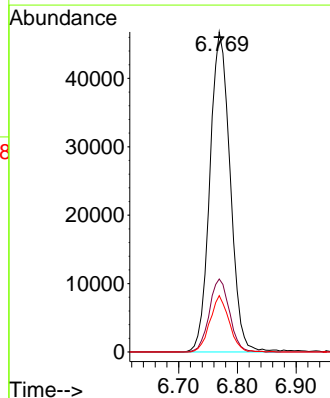
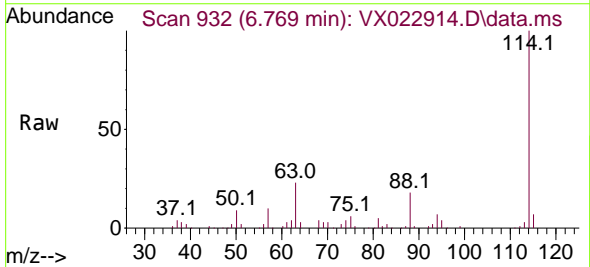
Instrument :  
 MSVOA\_X  
 ClientSampled :

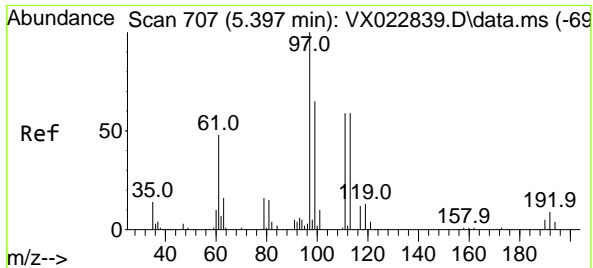
Tgt Ion: 65 Resp: 54302  
 Ion Ratio Lower Upper  
 65 100  
 67 51.4 0.0 105.4



#34  
 1,4-Difluorobenzene  
 Concen: 50.00 ug/l  
 RT: 6.769 min Scan# 932  
 Delta R.T. 0.000 min  
 Lab File: VX022914.D  
 Acq: 25 Jun 2021 11:37

Tgt Ion:114 Resp: 112060  
 Ion Ratio Lower Upper  
 114 100  
 63 22.8 0.0 40.8  
 88 17.6 0.0 32.8

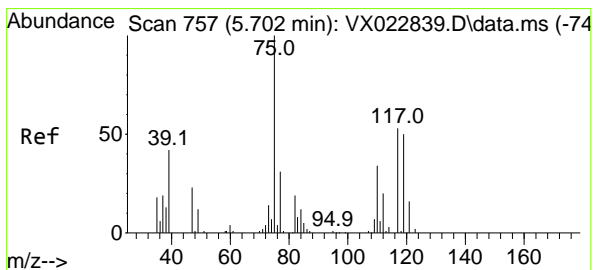
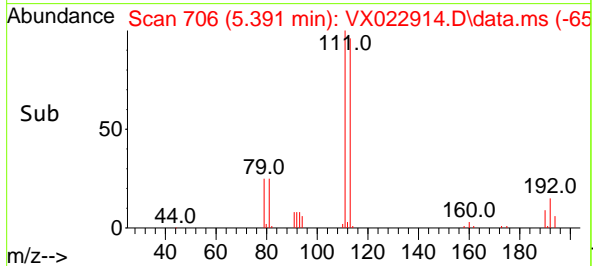
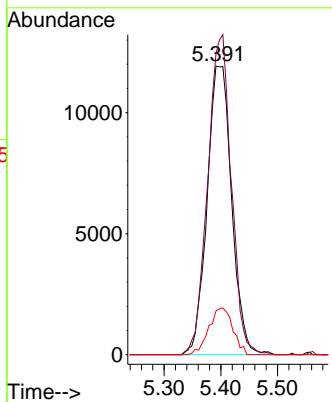
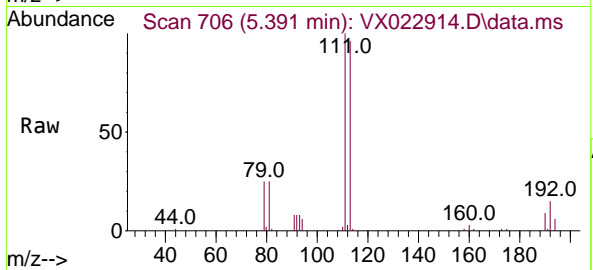




#35  
 Dibromofluoromethane  
 Concen: 50.37 ug/l  
 RT: 5.391 min Scan# 706  
 Delta R.T. -0.006 min  
 Lab File: VX022914.D  
 Acq: 25 Jun 2021 11:37

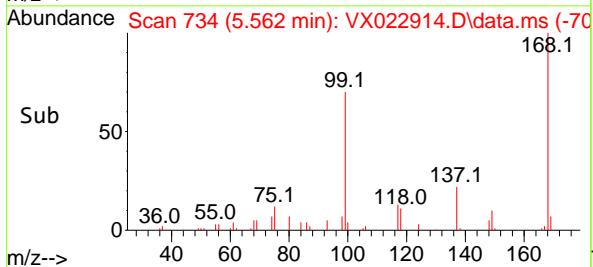
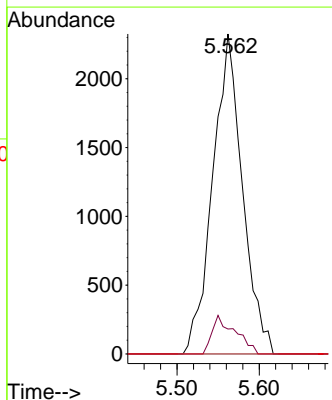
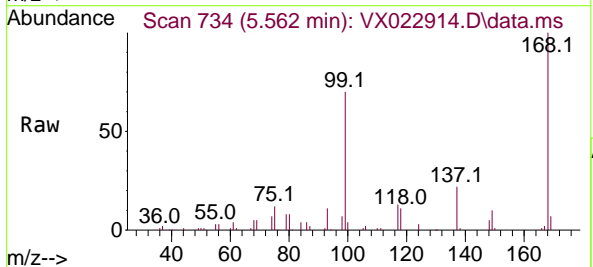
Instrument :  
 MSVOA\_X  
 ClientSampled :

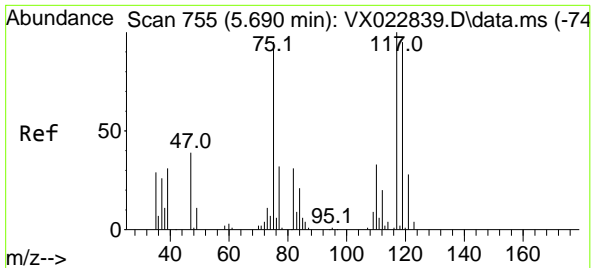
| Tgt Ion | Resp  | Lower | Upper |
|---------|-------|-------|-------|
| 113     | 35841 |       |       |
| 113     | 100   |       |       |
| 111     | 106.7 | 81.9  | 122.9 |
| 192     | 15.8  | 16.7  | 25.1# |



#36  
 1,1-Dichloropropene  
 Concen: 4.90 ug/l  
 RT: 5.562 min Scan# 734  
 Delta R.T. -0.140 min  
 Lab File: VX022914.D  
 Acq: 25 Jun 2021 11:37

| Tgt Ion | Resp | Lower | Upper |
|---------|------|-------|-------|
| 75      | 5836 |       |       |
| 75      | 100  |       |       |
| 110     | 9.4  | 18.1  | 54.4# |
| 77      | 0.0  | 25.3  | 37.9# |

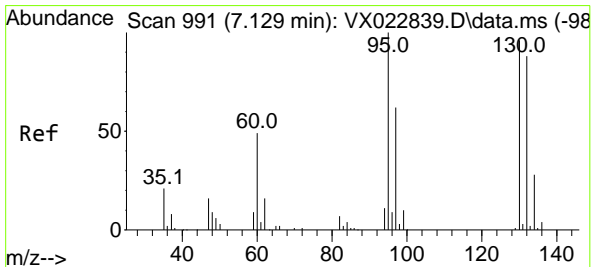
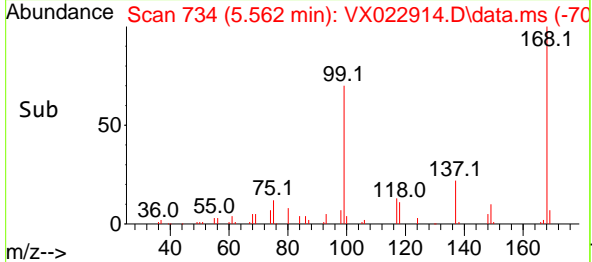
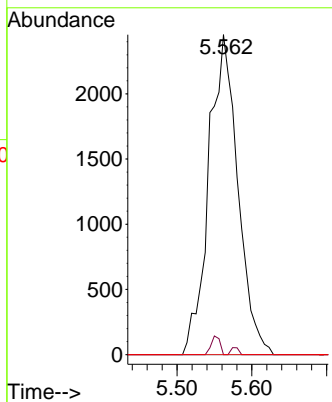
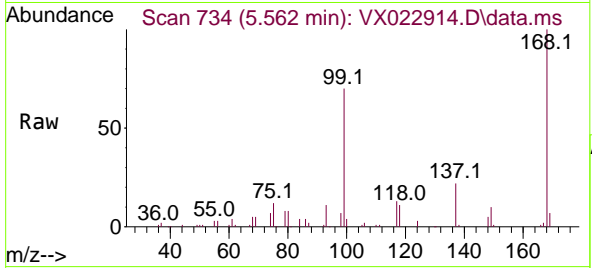




#38  
 Carbon Tetrachloride  
 Concen: 6.66 ug/l  
 RT: 5.562 min Scan# 734  
 Delta R.T. -0.128 min  
 Lab File: VX022914.D  
 Acq: 25 Jun 2021 11:37

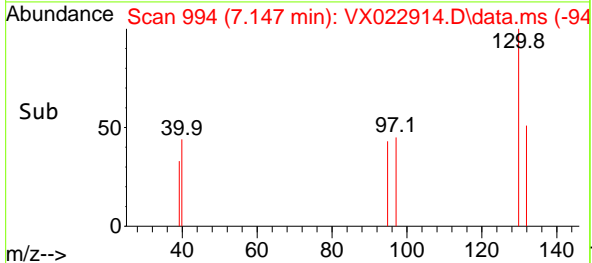
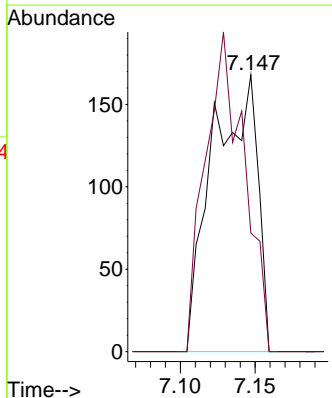
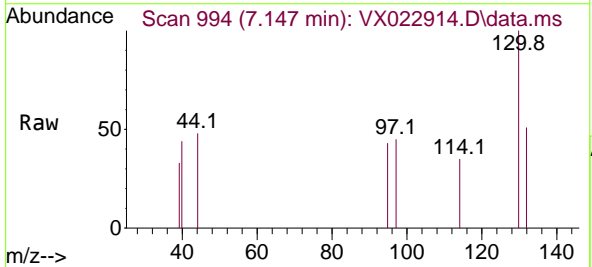
Instrument :  
 MSVOA\_X  
 ClientSampled :

| Tgt Ion | Resp | Lower | Upper  |
|---------|------|-------|--------|
| 117     | 100  |       |        |
| 119     | 0.0  | 76.2  | 114.2# |
| 121     | 0.0  | 24.8  | 37.2#  |

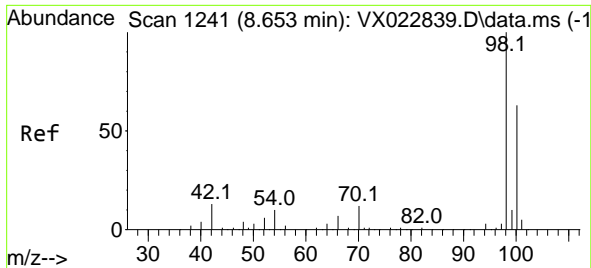


#44  
 Trichloroethene  
 Concen: 0.43 ug/l  
 RT: 7.147 min Scan# 994  
 Delta R.T. 0.018 min  
 Lab File: VX022914.D  
 Acq: 25 Jun 2021 11:37

| Tgt Ion | Resp | Lower | Upper |
|---------|------|-------|-------|
| 130     | 100  |       |       |
| 95      | 42.9 | 0.0   | 198.0 |



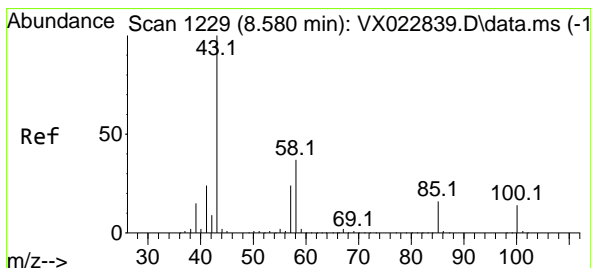
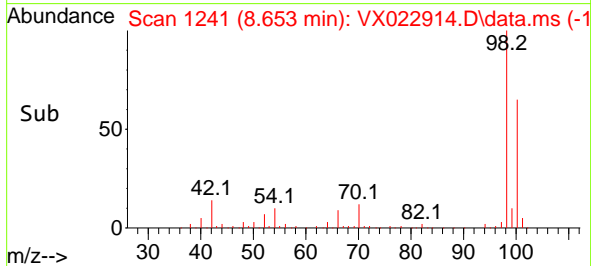
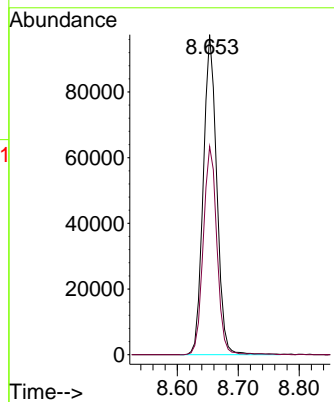
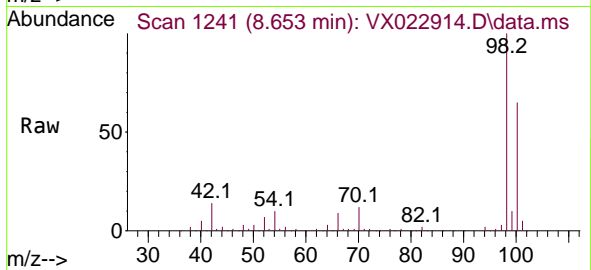




#50  
 Toluene-d8  
 Concen: 53.66 ug/l  
 RT: 8.653 min Scan# 1241  
 Delta R.T. -0.000 min  
 Lab File: VX022914.D  
 Acq: 25 Jun 2021 11:37

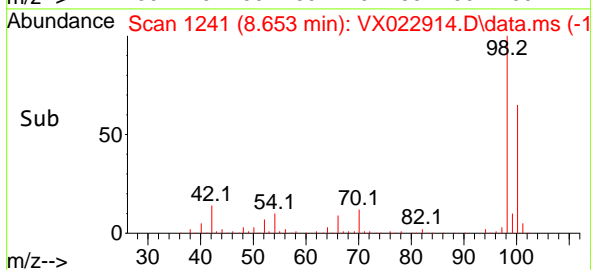
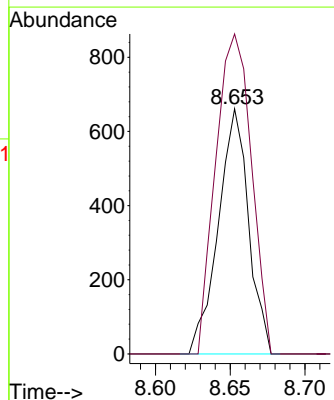
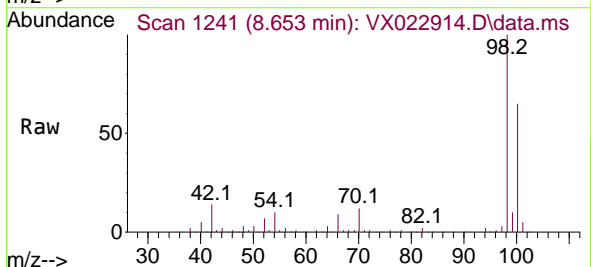
Instrument :  
 MSVOA\_X  
 ClientSampled :

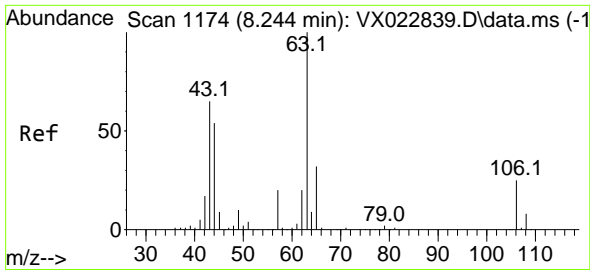
Tgt Ion: 98 Resp: 149658  
 Ion Ratio Lower Upper  
 98 100  
 100 65.4 51.9 77.9



#51  
 4-Methyl-2-Pentanone  
 Concen: 0.68 ug/l  
 RT: 8.653 min Scan# 1241  
 Delta R.T. 0.073 min  
 Lab File: VX022914.D  
 Acq: 25 Jun 2021 11:37

Tgt Ion: 43 Resp: 934  
 Ion Ratio Lower Upper  
 43 100  
 58 153.3 35.4 53.0#

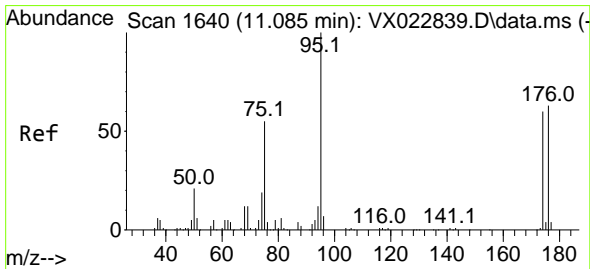
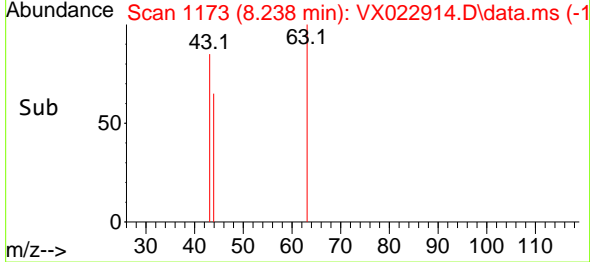
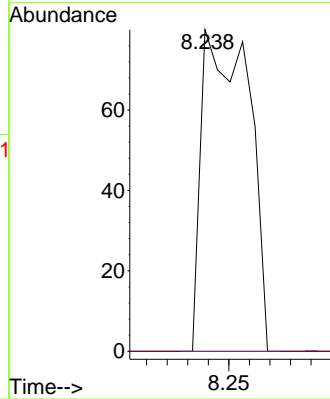
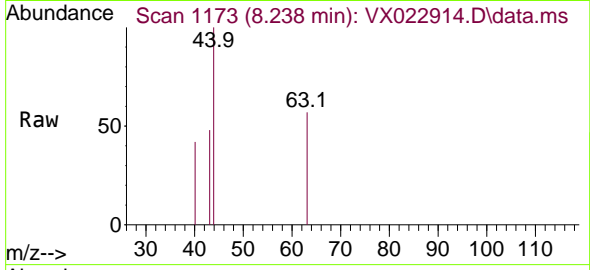




#58  
 2-Chloroethyl Vinyl ether  
 Concen: 5.37 ug/l  
 RT: 8.238 min Scan# 1173  
 Delta R.T. -0.006 min  
 Lab File: VX022914.D  
 Acq: 25 Jun 2021 11:37

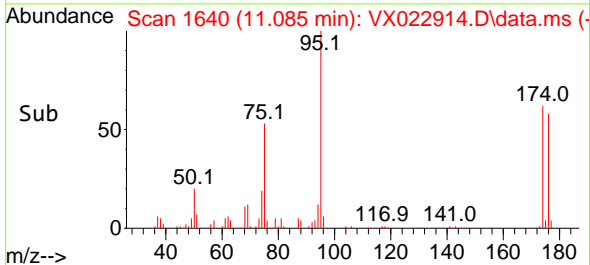
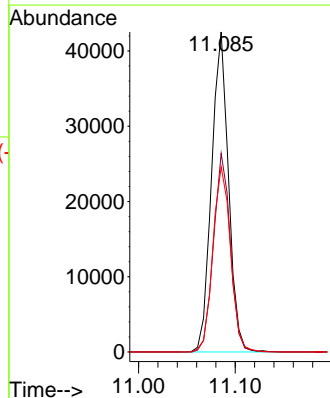
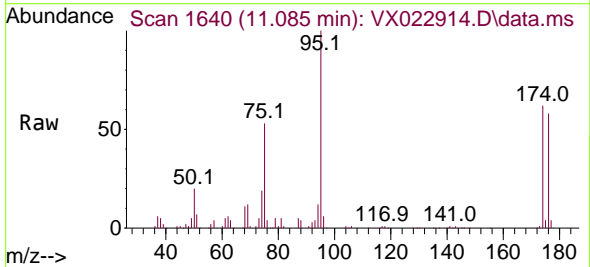
Instrument :  
 MSVOA\_X  
 ClientSampled :

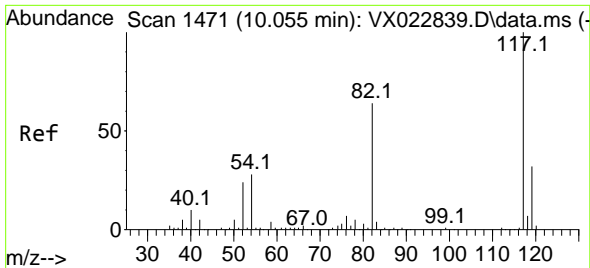
Tgt Ion: 63 Resp: 128  
 Ion Ratio Lower Upper  
 63 100  
 106 0.0 23.5 35.3#



#62  
 4-Bromofluorobenzene  
 Concen: 49.60 ug/l  
 RT: 11.085 min Scan# 1640  
 Delta R.T. 0.000 min  
 Lab File: VX022914.D  
 Acq: 25 Jun 2021 11:37

Tgt Ion: 95 Resp: 51628  
 Ion Ratio Lower Upper  
 95 100  
 174 61.9 0.0 154.6  
 176 60.6 0.0 155.8



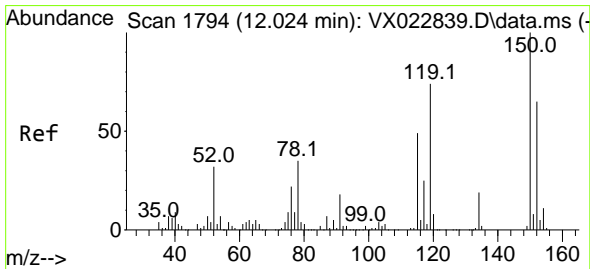
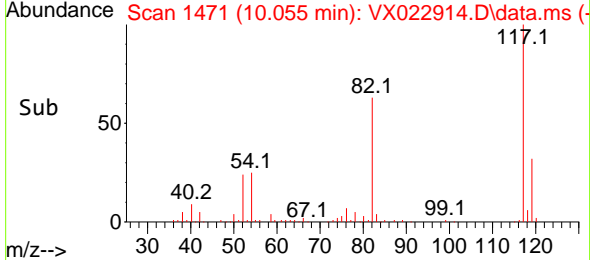
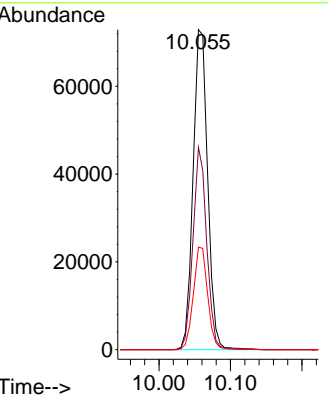
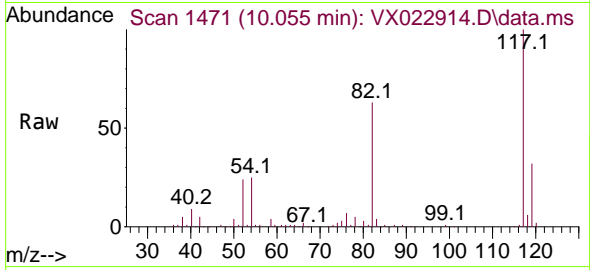


#63  
 Chlorobenzene-d5  
 Concen: 50.00 ug/l  
 RT: 10.055 min Scan# 1471  
 Delta R.T. 0.000 min  
 Lab File: VX022914.D  
 Acq: 25 Jun 2021 11:37

Instrument :  
 MSVOA\_X  
 ClientSampled :

Tgt Ion:117 Resp: 103206

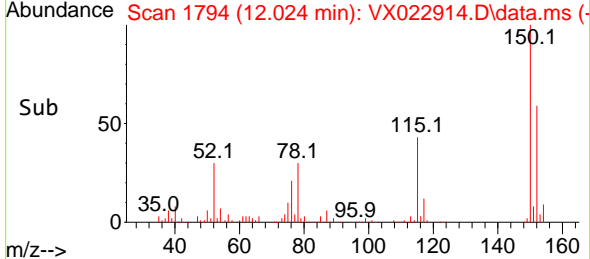
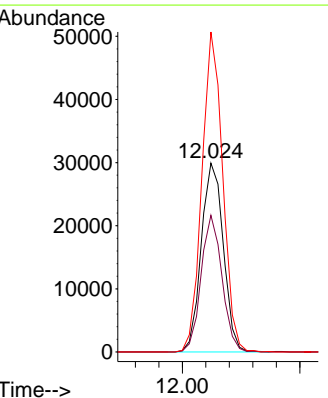
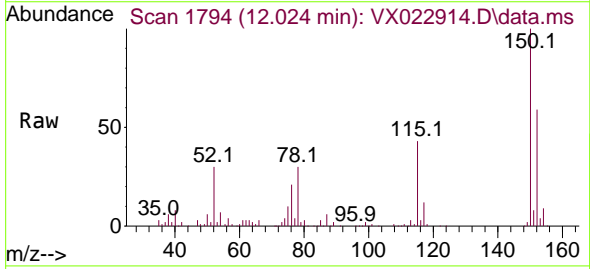
| Ion | Ratio | Lower | Upper |
|-----|-------|-------|-------|
| 117 | 100   |       |       |
| 82  | 63.2  | 47.4  | 71.2  |
| 119 | 32.0  | 26.6  | 39.8  |

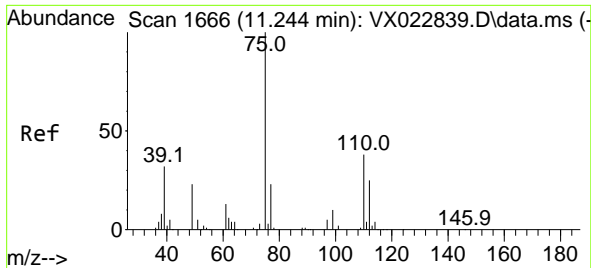


#72  
 1,4-Dichlorobenzene-d4  
 Concen: 50.00 ug/l  
 RT: 12.024 min Scan# 1794  
 Delta R.T. 0.000 min  
 Lab File: VX022914.D  
 Acq: 25 Jun 2021 11:37

Tgt Ion:152 Resp: 39066

| Ion | Ratio | Lower | Upper |
|-----|-------|-------|-------|
| 152 | 100   |       |       |
| 115 | 68.5  | 41.1  | 123.3 |
| 150 | 159.6 | 0.0   | 349.0 |

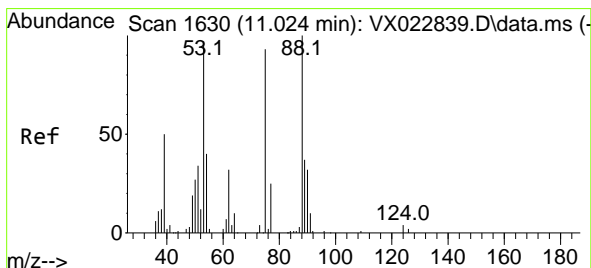
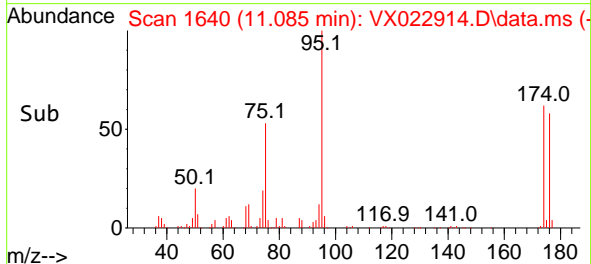
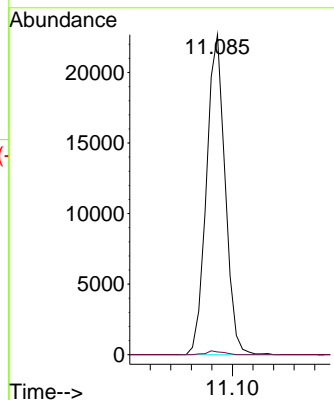
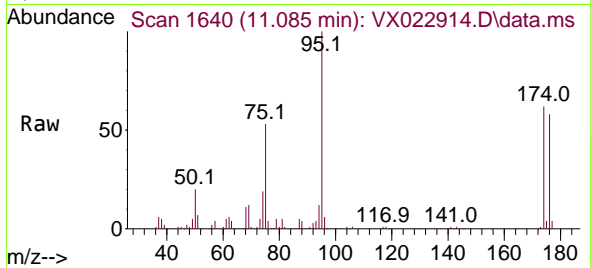




#76  
 1,2,3-Trichloropropane  
 Concen: 27.68 ug/l  
 RT: 11.085 min Scan# 1640  
 Delta R.T. -0.159 min  
 Lab File: VX022914.D  
 Acq: 25 Jun 2021 11:37

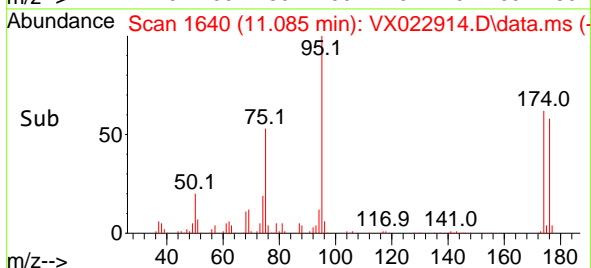
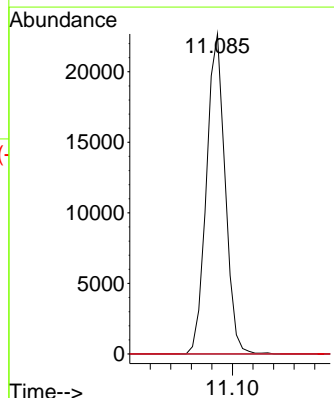
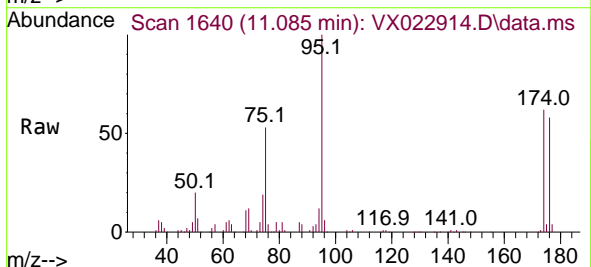
Instrument :  
 MSVOA\_X  
 ClientSampled :

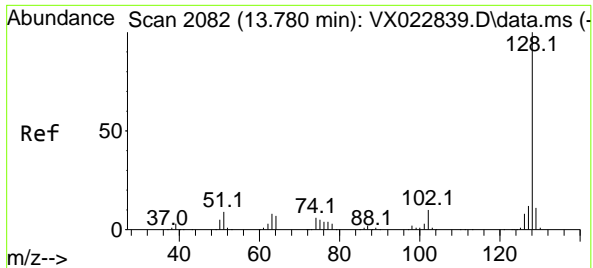
Tgt Ion: 75 Resp: 28561  
 Ion Ratio Lower Upper  
 75 100  
 77 1.1 19.1 57.5#



#81  
 trans-1,4-Dichloro-2-butene  
 Concen: 71.54 ug/l  
 RT: 11.085 min Scan# 1640  
 Delta R.T. 0.061 min  
 Lab File: VX022914.D  
 Acq: 25 Jun 2021 11:37

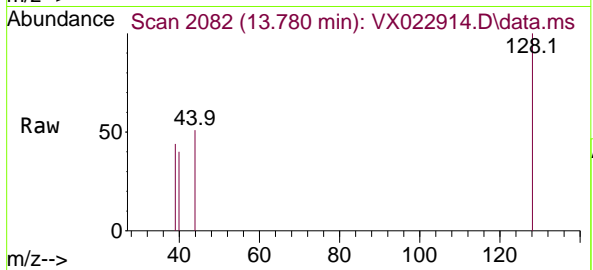
Tgt Ion: 75 Resp: 28561  
 Ion Ratio Lower Upper  
 75 100  
 53 0.0 74.5 111.7#  
 89 0.0 37.9 56.9#





#95  
 Naphthalene  
 Concen: 1.97 ug/l  
 RT: 13.780 min Scan# 2082  
 Delta R.T. 0.000 min  
 Lab File: VX022914.D  
 Acq: 25 Jun 2021 11:37

Instrument :  
 MSVOA\_X  
 ClientSampled :



Tgt Ion:128 Resp: 168

| Ion | Ratio | Lower | Upper |
|-----|-------|-------|-------|
| 128 | 100   |       |       |
| 127 | 0.0   | 10.3  | 15.5# |
| 129 | 0.0   | 8.8   | 13.2# |

