

Data Path : Z:\voasrv\HPCHEM1\MSVOA_X\Data\VX062521\
 Data File : VX022927.D
 Acq On : 25 Jun 2021 16:50
 Operator : JC/MD
 Sample : M2803-22DL 5X
 Misc : 5.0mL/MSVOA_X/WATER
 ALS Vial : 17 Sample Multiplier: 1

Instrument :
 MSVOA_X
 ClientSampleId :
 TT101D1-20210621DL

Quant Time: Jun 26 03:54:35 2021
 Quant Method : Z:\voasrv\HPCHEM1\MSVOA_X\Method\82X062321W.M
 Quant Title : SW846 8260
 QLast Update : Wed Jun 23 19:12:26 2021
 Response via : Initial Calibration

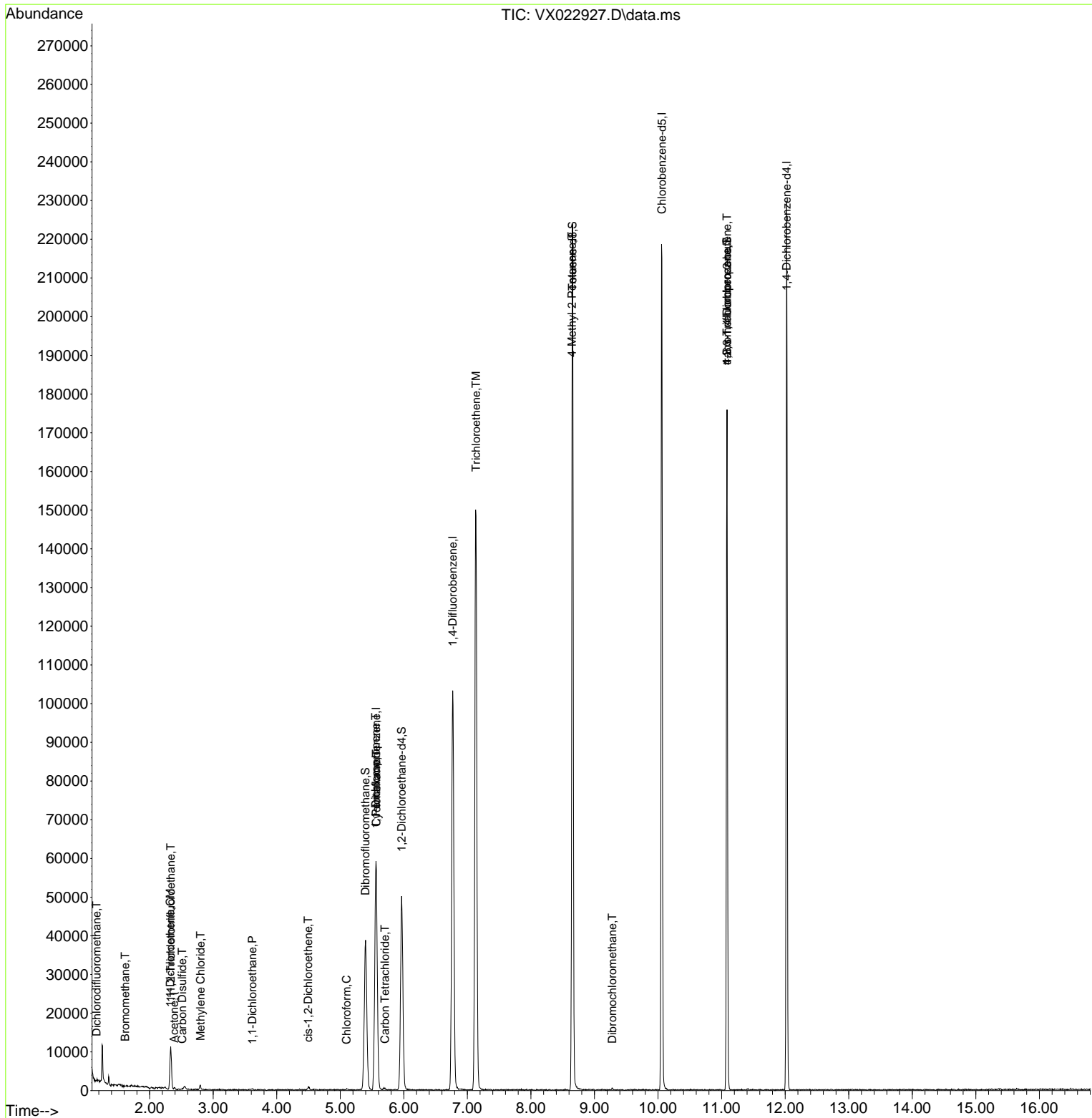
Compound	R.T.	QIon	Response	Conc	Units	Dev(Min)
Internal Standards						
1) Pentafluorobenzene	5.562	168	48702	50.00	ug/l	0.00
34) 1,4-Difluorobenzene	6.769	114	101307	50.00	ug/l	0.00
63) Chlorobenzene-d5	10.061	117	93763	50.00	ug/l	0.00
72) 1,4-Dichlorobenzene-d4	12.024	152	38863	50.00	ug/l	0.00
System Monitoring Compounds						
33) 1,2-Dichloroethane-d4	5.964	65	45523	51.51	ug/l	0.00
Spiked Amount	50.000	Range 78 - 117	Recovery	=	103.02%	
35) Dibromofluoromethane	5.397	113	32070	49.85	ug/l	0.00
Spiked Amount	50.000	Range 75 - 124	Recovery	=	99.70%	
50) Toluene-d8	8.653	98	127760	50.67	ug/l	0.00
Spiked Amount	50.000	Range 92 - 112	Recovery	=	101.34%	
62) 4-Bromofluorobenzene	11.085	95	45542	48.40	ug/l	0.00
Spiked Amount	50.000	Range 83 - 123	Recovery	=	96.80%	
Target Compounds						
						Qvalue
2) Dichlorodifluoromethane	1.166	85	149	0.22	ug/l #	42
5) Bromomethane	1.617	94	85	0.22	ug/l #	2
9) 1,1,2-Trichlorotrifluo...	2.331	101	3185	5.03	ug/l	90
12) 1,1-Dichloroethene	2.325	96	1197	1.89	ug/l #	87
16) Acetone	2.385	43	440	1.12	ug/l #	80
17) Carbon Disulfide	2.514	76	66	3.55	ug/l #	75
20) Methylene Chloride	2.800	84	461	0.96	ug/l #	82
24) 1,1-Dichloroethane	3.617	63	376	0.28	ug/l #	81
27) cis-1,2-Dichloroethene	4.495	96	433	0.56	ug/l	73
30) Chloroform	5.098	83	325	0.24	ug/l	98
31) Cyclohexane	5.568	56	1617	1.30	ug/l #	60
36) 1,1-Dichloropropene	5.556	75	4594	4.27	ug/l #	48
38) Carbon Tetrachloride	5.702	117	260	0.29	ug/l #	75
44) Trichloroethene	7.135	130	52179	70.91	ug/l	96
51) 4-Methyl-2-Pentanone	8.647	43	636	0.51	ug/l #	1
60) Dibromochloromethane	9.281	129	52	3.72	ug/l #	11
76) 1,2,3-Trichloropropane	11.085	75	25685	25.02	ug/l #	38
81) trans-1,4-Dichloro-2-b...	11.085	75	25685	65.29	ug/l #	12

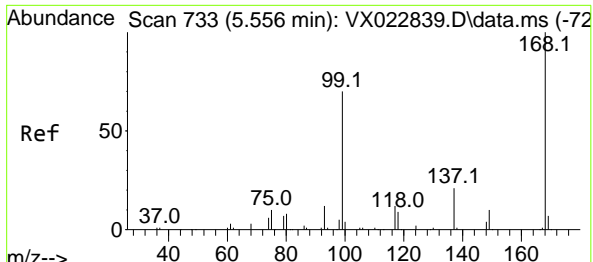
(#) = qualifier out of range (m) = manual integration (+) = signals summed

Data Path : Z:\voasrv\HPCHEM1\MSVOA_X\Data\VX062521\
 Data File : VX022927.D
 Acq On : 25 Jun 2021 16:50
 Operator : JC/MD
 Sample : M2803-22DL 5X
 Misc : 5.0mL/MSVOA_X/WATER
 ALS Vial : 17 Sample Multiplier: 1

Instrument :
 MSVOA_X
 ClientSampleId :
 TT101D1-20210621DL

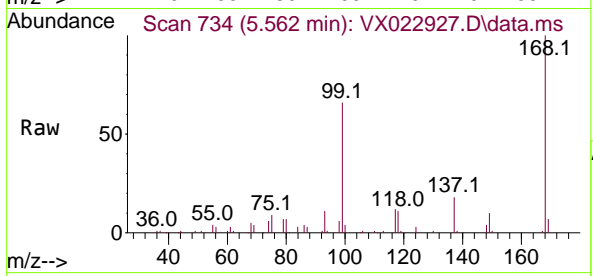
Quant Time: Jun 26 03:54:35 2021
 Quant Method : Z:\voasrv\HPCHEM1\MSVOA_X\Method\82X062321W.M
 Quant Title : SW846 8260
 QLast Update : Wed Jun 23 19:12:26 2021
 Response via : Initial Calibration



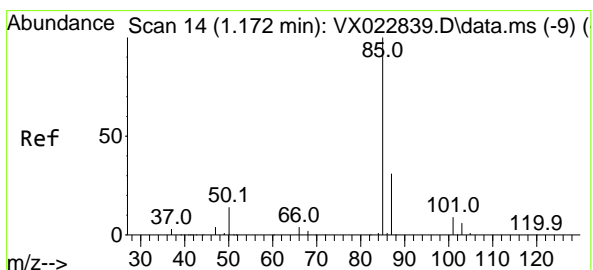
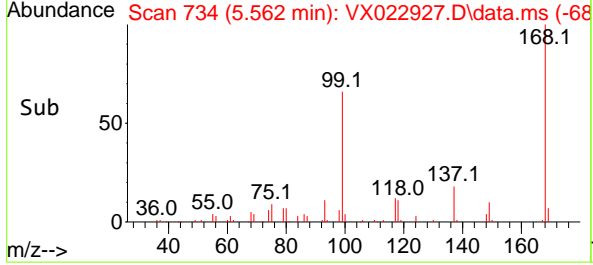
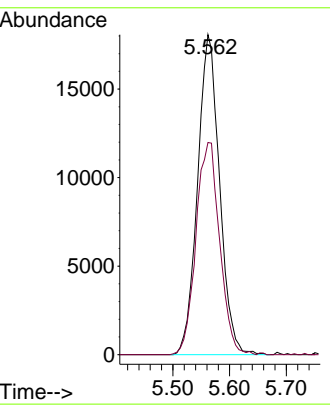


#1
 Pentafluorobenzene
 Concen: 50.00 ug/l
 RT: 5.562 min Scan# 734
 Delta R.T. 0.006 min
 Lab File: VX022927.D
 Acq: 25 Jun 2021 16:50

Instrument : MSVOA_X
 ClientSampled : TT101D1-20210621DL

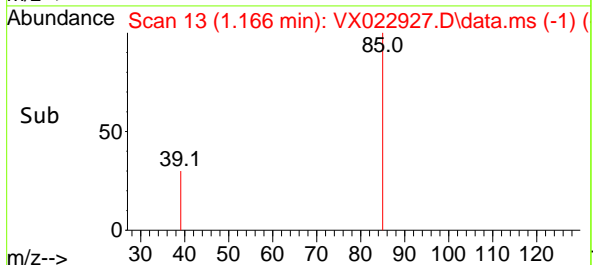
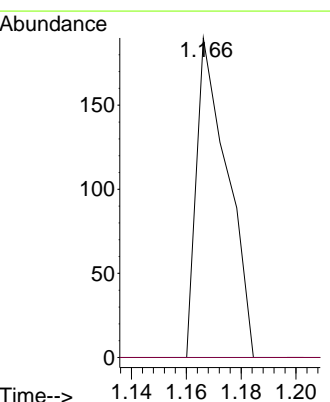
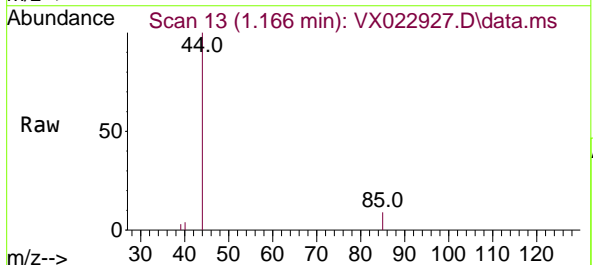


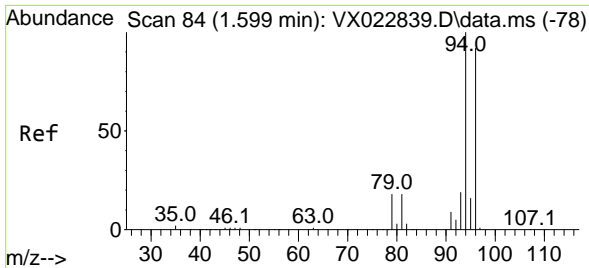
Tgt Ion: 168 Resp: 48702
 Ion Ratio Lower Upper
 168 100
 99 66.3 45.8 68.6



#2
 Dichlorodifluoromethane
 Concen: 0.22 ug/l
 RT: 1.166 min Scan# 13
 Delta R.T. -0.006 min
 Lab File: VX022927.D
 Acq: 25 Jun 2021 16:50

Tgt Ion: 85 Resp: 149
 Ion Ratio Lower Upper
 85 100
 87 0.0 16.4 49.2#

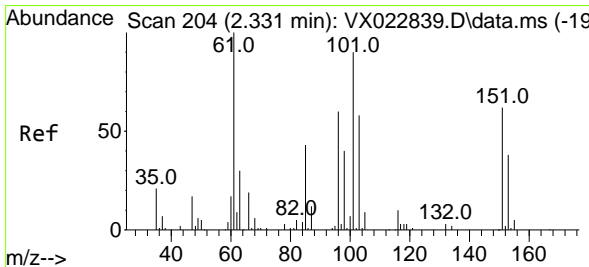
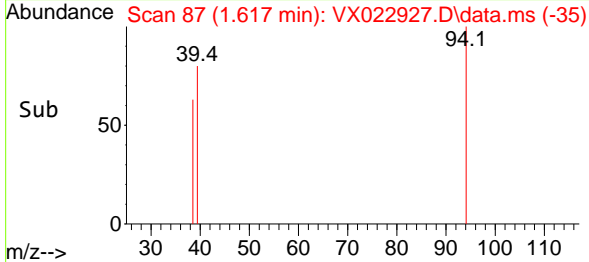
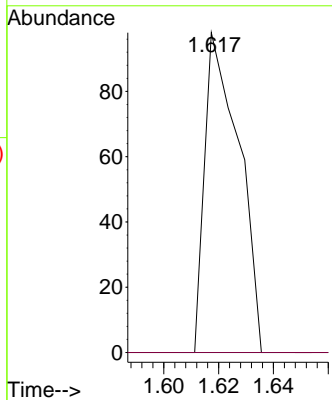
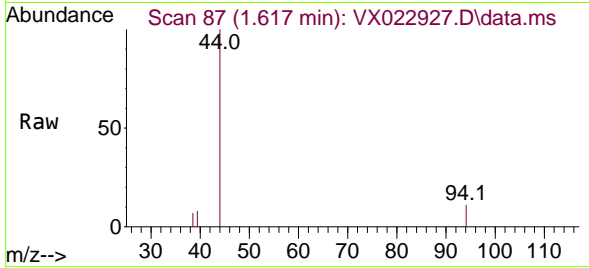




#5
 Bromomethane
 Concen: 0.22 ug/l
 RT: 1.617 min Scan# 87
 Delta R.T. 0.018 min
 Lab File: VX022927.D
 Acq: 25 Jun 2021 16:50

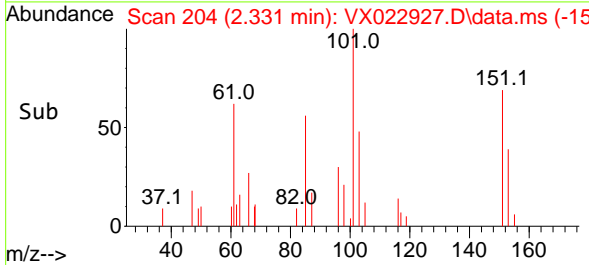
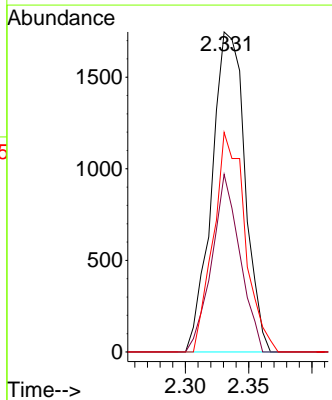
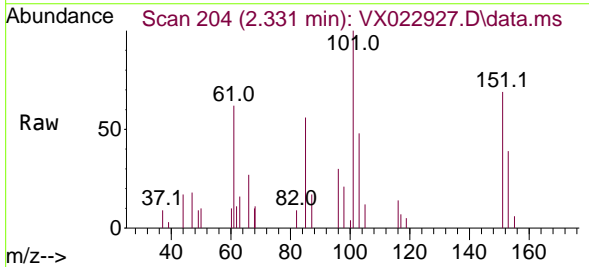
Instrument :
 MSVOA_X
ClientSampled :
 TT101D1-20210621DL

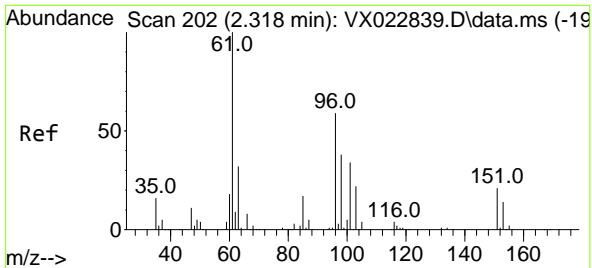
Tgt Ion: 94 Resp: 85
 Ion Ratio Lower Upper
 94 100
 96 0.0 76.4 114.6#



#9
 1,1,2-Trichlorotrifluoroethane
 Concen: 5.03 ug/l
 RT: 2.331 min Scan# 204
 Delta R.T. -0.000 min
 Lab File: VX022927.D
 Acq: 25 Jun 2021 16:50

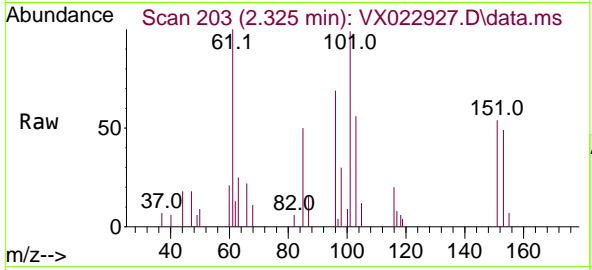
Tgt Ion:101 Resp: 3185
 Ion Ratio Lower Upper
 101 100
 85 47.2 34.9 52.3
 151 65.3 61.4 92.2





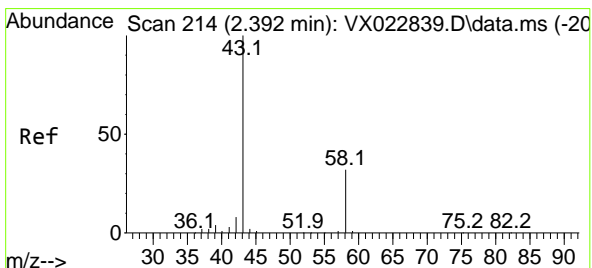
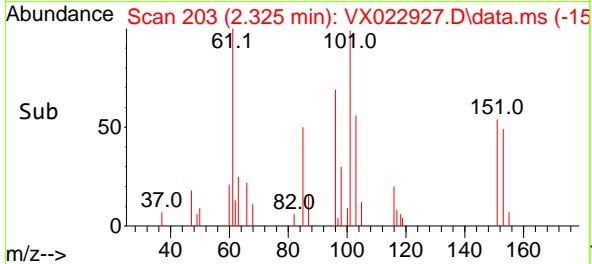
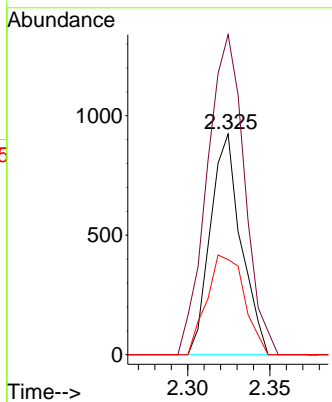
#12
 1,1-Dichloroethene
 Concen: 1.89 ug/l
 RT: 2.325 min Scan# 203
 Delta R.T. 0.007 min
 Lab File: VX022927.D
 Acq: 25 Jun 2021 16:50

Instrument :
 MSVOA_X
ClientSampled :
 TT101D1-20210621DL

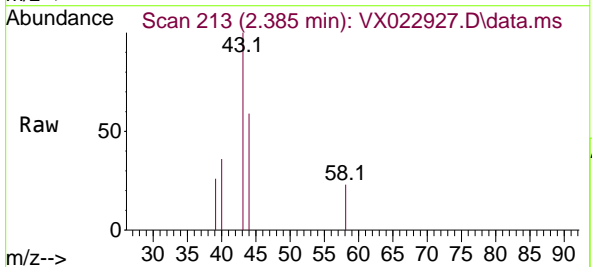


Tgt Ion: 96 Resp: 1197

Ion	Ratio	Lower	Upper
96	100		
61	145.1	124.6	187.0
98	43.1	50.6	76.0#

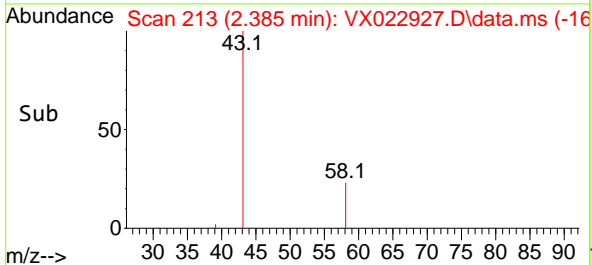
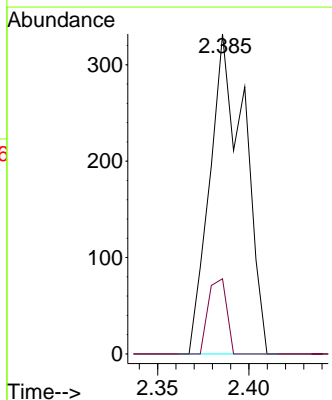


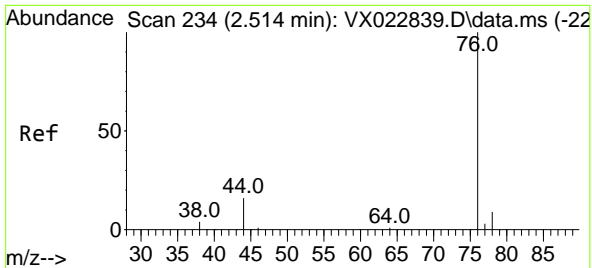
#16
 Acetone
 Concen: 1.12 ug/l
 RT: 2.385 min Scan# 213
 Delta R.T. -0.007 min
 Lab File: VX022927.D
 Acq: 25 Jun 2021 16:50



Tgt Ion: 43 Resp: 440

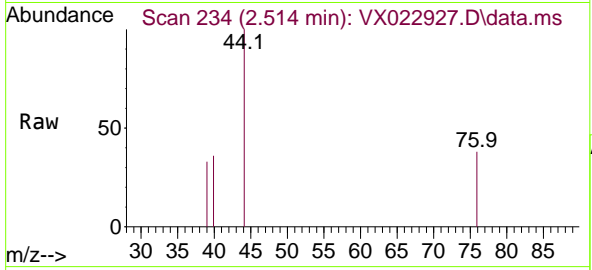
Ion	Ratio	Lower	Upper
43	100		
58	23.5	27.8	41.8#



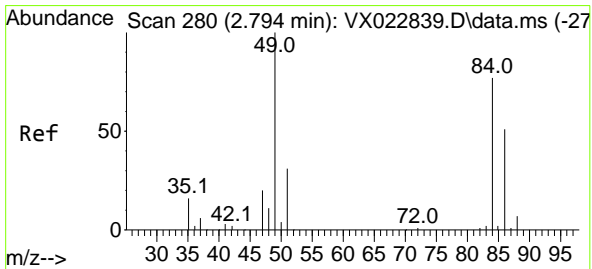
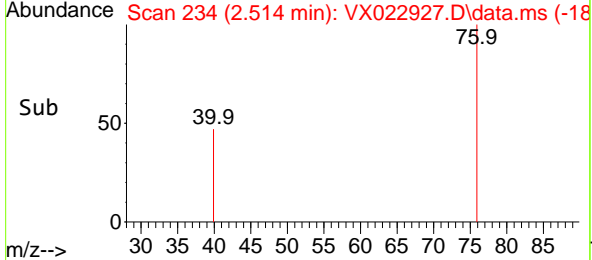
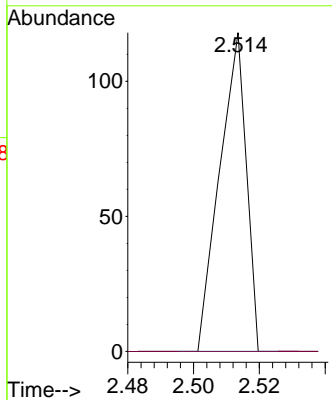


#17
 Carbon Disulfide
 Concen: 3.55 ug/l
 RT: 2.514 min Scan# 234
 Delta R.T. -0.000 min
 Lab File: VX022927.D
 Acq: 25 Jun 2021 16:50

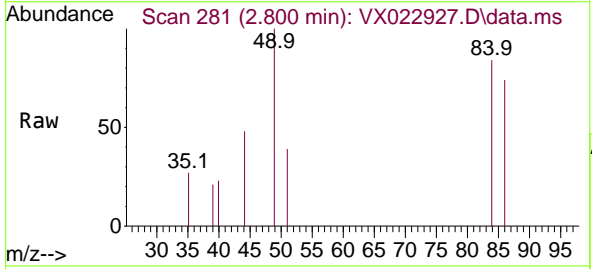
Instrument : MSVOA_X
 ClientSampled : TT101D1-20210621DL



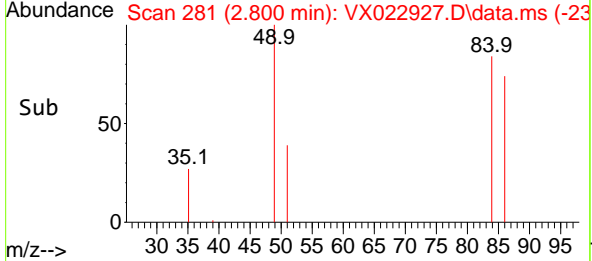
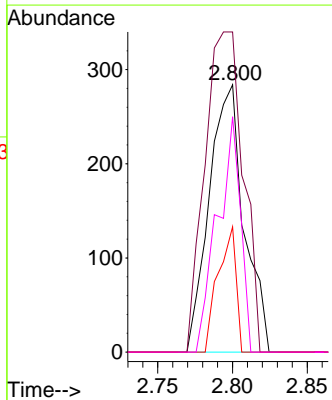
Tgt Ion: 76 Resp: 66
 Ion Ratio Lower Upper
 76 100
 78 0.0 7.2 10.8#

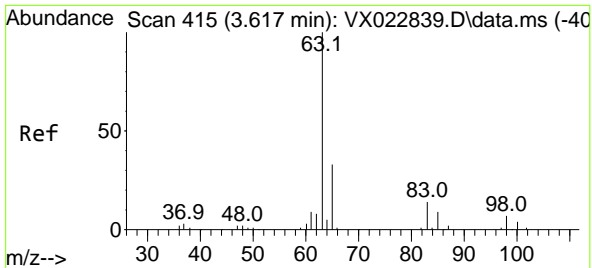


#20
 Methylene Chloride
 Concen: 0.96 ug/l
 RT: 2.800 min Scan# 281
 Delta R.T. 0.006 min
 Lab File: VX022927.D
 Acq: 25 Jun 2021 16:50



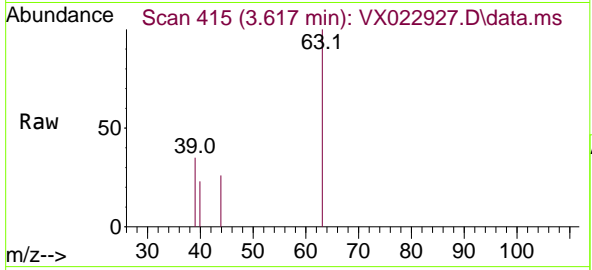
Tgt Ion: 84 Resp: 461
 Ion Ratio Lower Upper
 84 100
 49 119.7 88.6 132.8
 51 46.8 27.0 40.6#
 86 88.0 50.3 75.5#



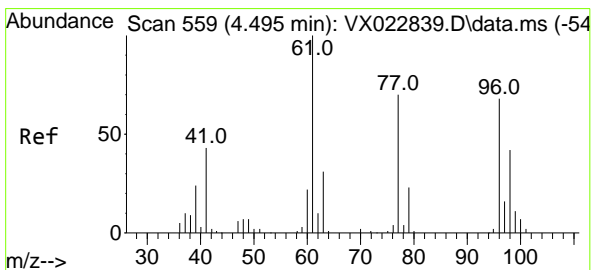
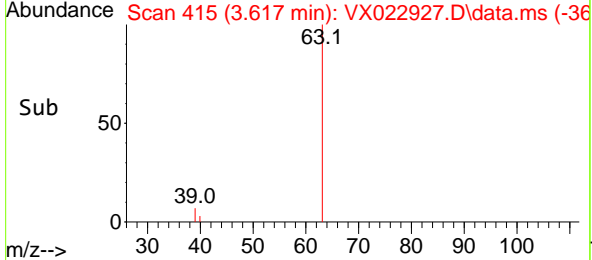
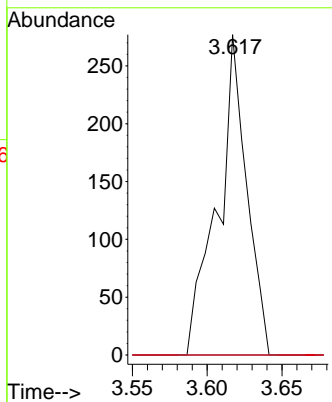


#24
 1,1-Dichloroethane
 Concen: 0.28 ug/l
 RT: 3.617 min Scan# 415
 Delta R.T. -0.000 min
 Lab File: VX022927.D
 Acq: 25 Jun 2021 16:50

Instrument : MSVOA_X
 ClientSampleID : TT101D1-20210621DL

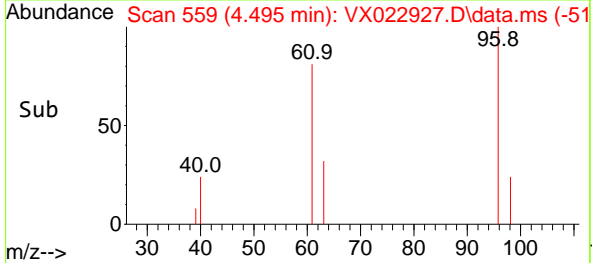
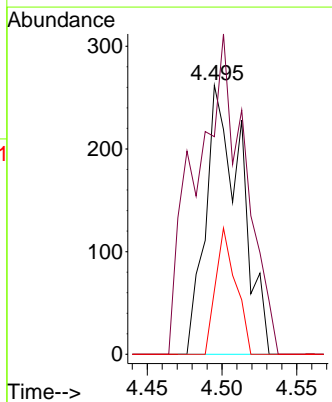
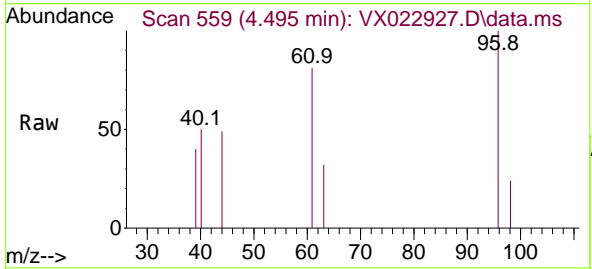


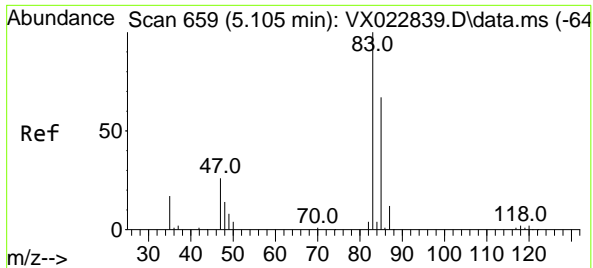
Tgt Ion	Resp	Lower	Upper
63	100		
98	0.0	3.8	11.2#
100	0.0	2.5	7.5#



#27
 cis-1,2-Dichloroethene
 Concen: 0.56 ug/l
 RT: 4.495 min Scan# 559
 Delta R.T. -0.000 min
 Lab File: VX022927.D
 Acq: 25 Jun 2021 16:50

Tgt Ion	Resp	Lower	Upper
96	100		
61	163.5	0.0	285.6
98	26.6	0.0	129.6

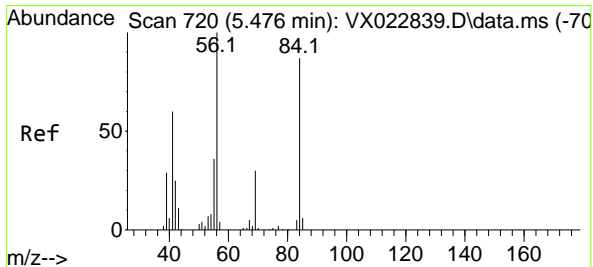
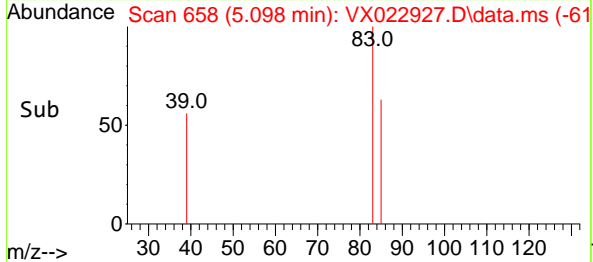
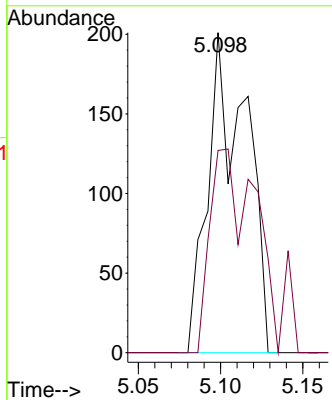
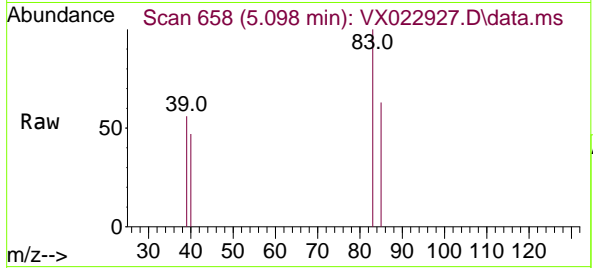




#30
 Chloroform
 Concen: 0.24 ug/l
 RT: 5.098 min Scan# 658
 Delta R.T. -0.007 min
 Lab File: VX022927.D
 Acq: 25 Jun 2021 16:50

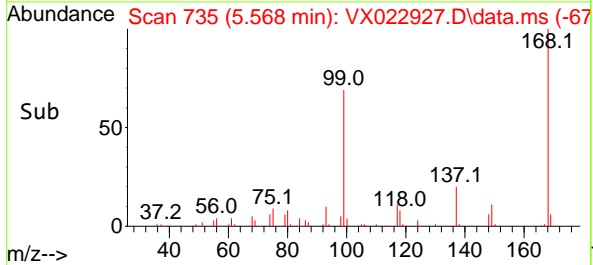
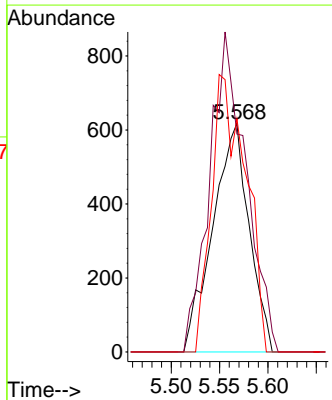
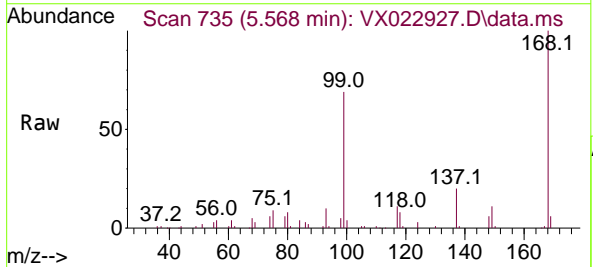
Instrument :
 MSVOA_X
ClientSampled :
 TT101D1-20210621DL

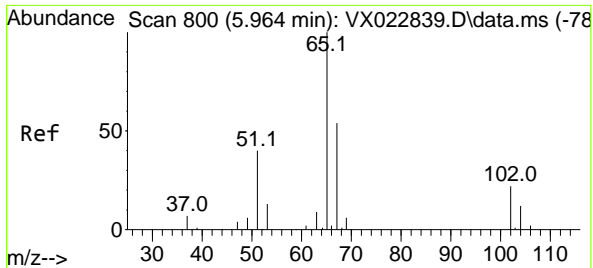
Tgt Ion: 83 Resp: 325
 Ion Ratio Lower Upper
 83 100
 85 63.2 52.0 78.0



#31
 Cyclohexane
 Concen: 1.30 ug/l
 RT: 5.568 min Scan# 735
 Delta R.T. 0.092 min
 Lab File: VX022927.D
 Acq: 25 Jun 2021 16:50

Tgt Ion: 56 Resp: 1617
 Ion Ratio Lower Upper
 56 100
 69 95.3 25.3 37.9#
 84 101.9 71.4 107.0

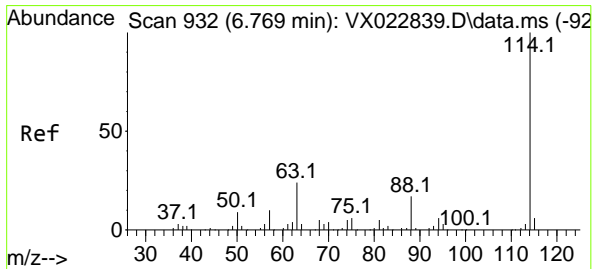
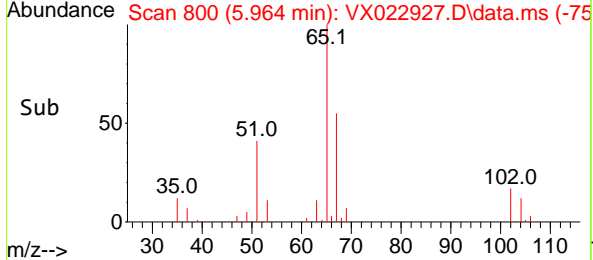
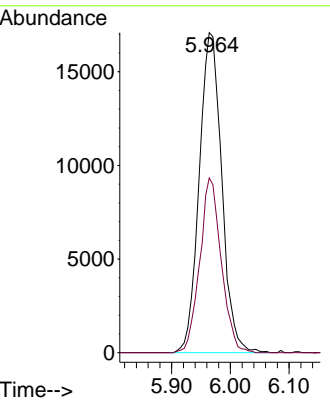
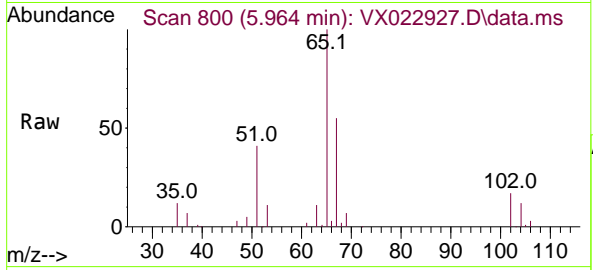




#33
 1,2-Dichloroethane-d4
 Concen: 51.51 ug/l
 RT: 5.964 min Scan# 800
 Delta R.T. 0.000 min
 Lab File: VX022927.D
 Acq: 25 Jun 2021 16:50

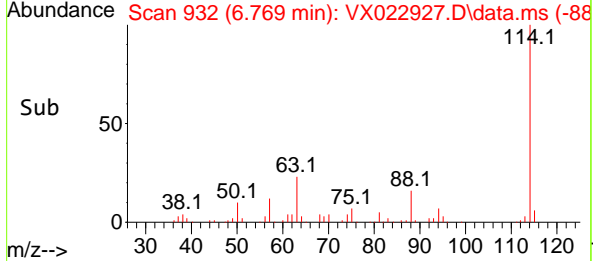
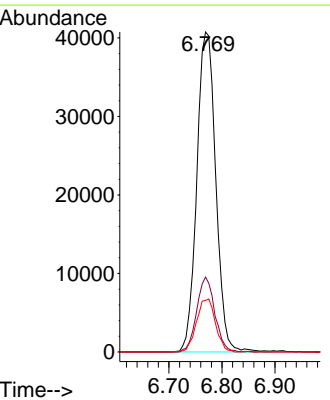
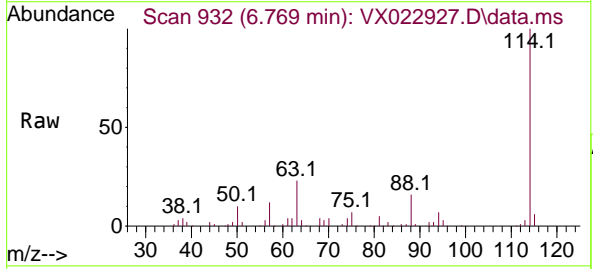
Instrument : MSVOA_X
 ClientSampled : TT101D1-20210621DL

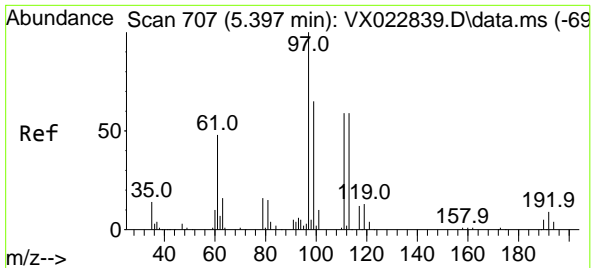
Tgt Ion: 65 Resp: 45523
 Ion Ratio Lower Upper
 65 100
 67 52.1 0.0 105.4



#34
 1,4-Difluorobenzene
 Concen: 50.00 ug/l
 RT: 6.769 min Scan# 932
 Delta R.T. -0.000 min
 Lab File: VX022927.D
 Acq: 25 Jun 2021 16:50

Tgt Ion:114 Resp: 101307
 Ion Ratio Lower Upper
 114 100
 63 23.4 0.0 40.8
 88 16.1 0.0 32.8

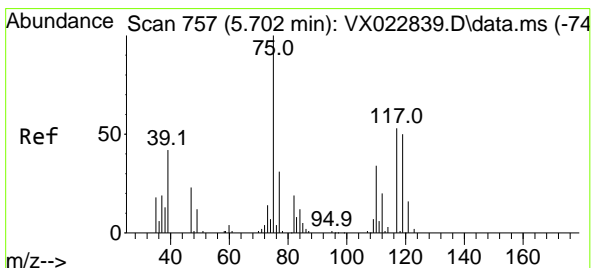
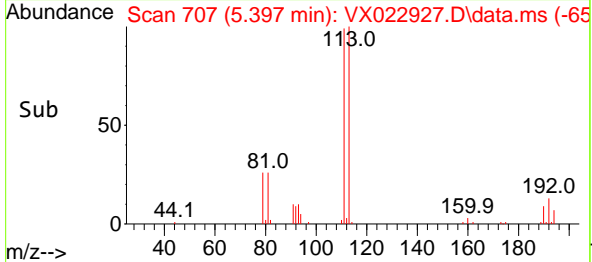
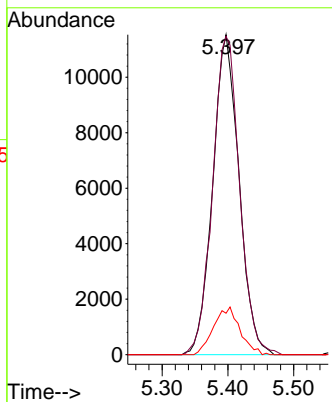
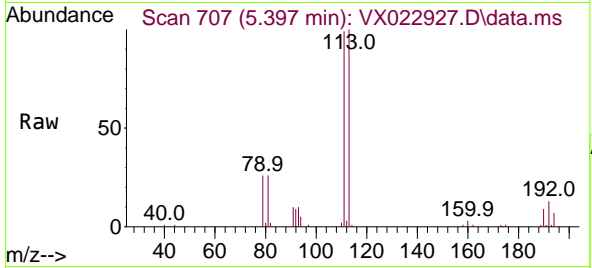




#35
 Dibromofluoromethane
 Concen: 49.85 ug/l
 RT: 5.397 min Scan# 707
 Delta R.T. 0.000 min
 Lab File: VX022927.D
 Acq: 25 Jun 2021 16:50

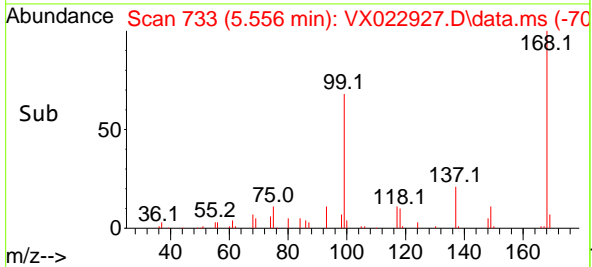
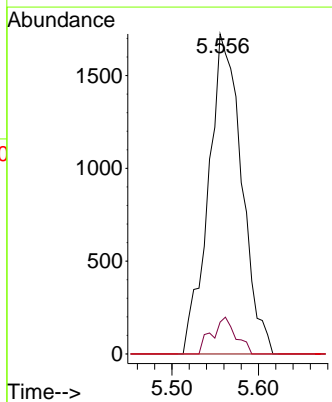
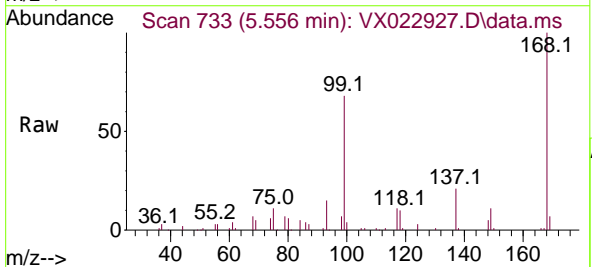
Instrument : MSVOA_X
 ClientSampled : TT101D1-20210621DL

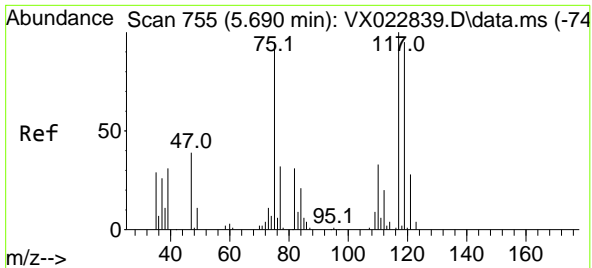
Tgt Ion	Resp	Lower	Upper
113	100		
111	101.9	81.9	122.9
192	14.9	16.7	25.1#



#36
 1,1-Dichloropropene
 Concen: 4.27 ug/l
 RT: 5.556 min Scan# 733
 Delta R.T. -0.146 min
 Lab File: VX022927.D
 Acq: 25 Jun 2021 16:50

Tgt Ion	Resp	Lower	Upper
75	100		
110	8.2	18.1	54.4#
77	0.0	25.3	37.9#

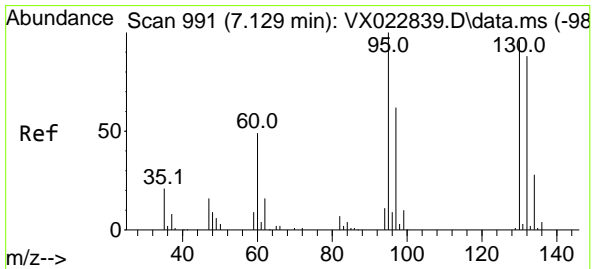
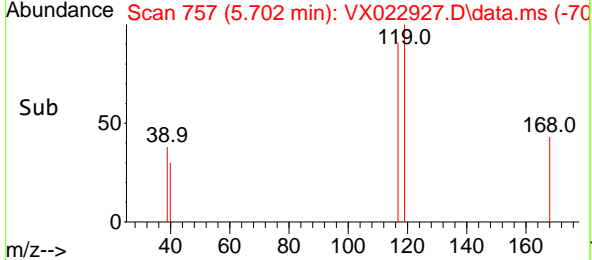
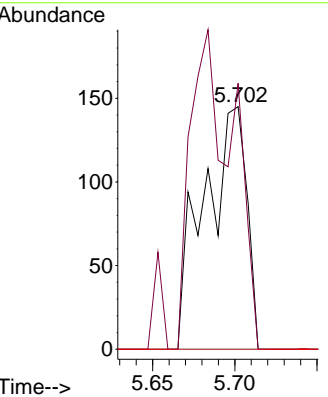
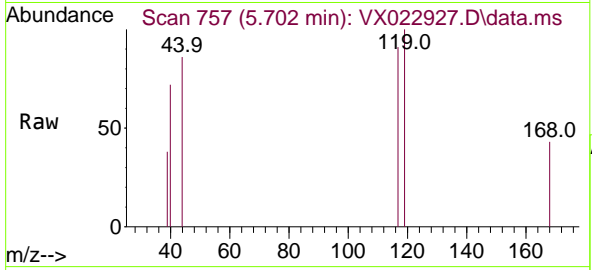




#38
 Carbon Tetrachloride
 Concen: 0.29 ug/l
 RT: 5.702 min Scan# 757
 Delta R.T. 0.012 min
 Lab File: VX022927.D
 Acq: 25 Jun 2021 16:50

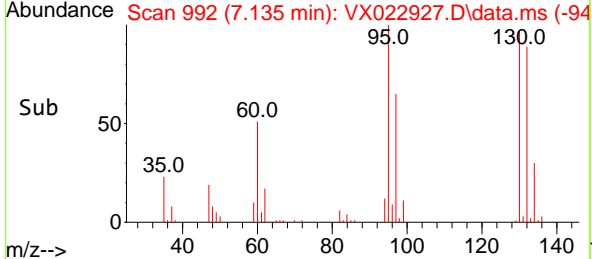
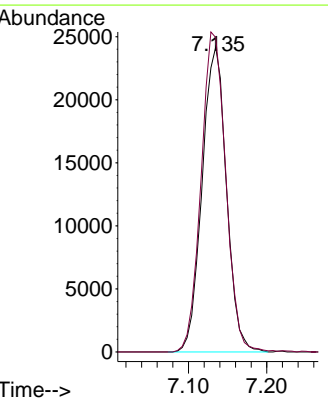
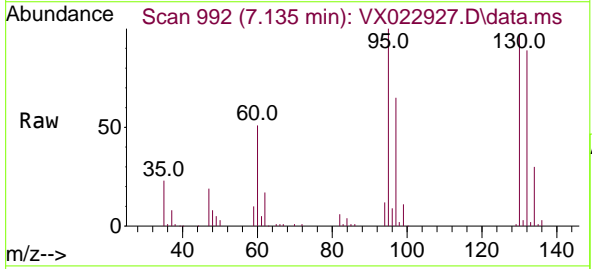
Instrument :
 MSVOA_X
 ClientSampled :
 TT101D1-20210621DL

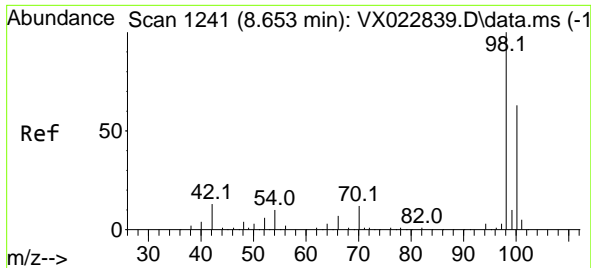
Tgt Ion	Resp	Lower	Upper
117	100		
119	109.7	76.2	114.2
121	0.0	24.8	37.2#



#44
 Trichloroethene
 Concen: 70.91 ug/l
 RT: 7.135 min Scan# 992
 Delta R.T. 0.006 min
 Lab File: VX022927.D
 Acq: 25 Jun 2021 16:50

Tgt Ion	Resp	Lower	Upper
130	100		
95	103.1	0.0	198.0

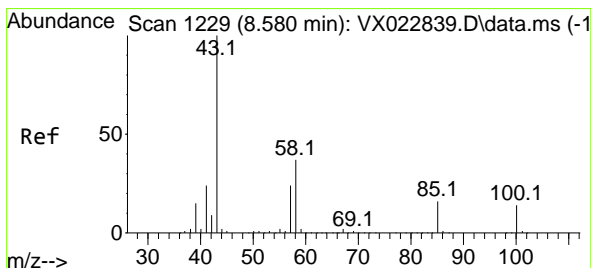
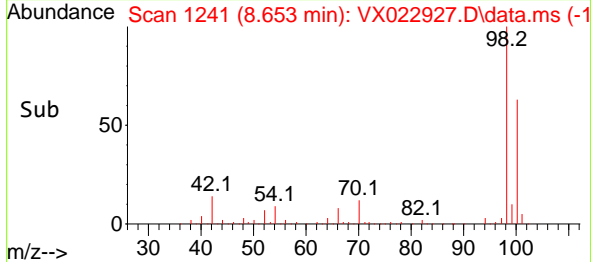
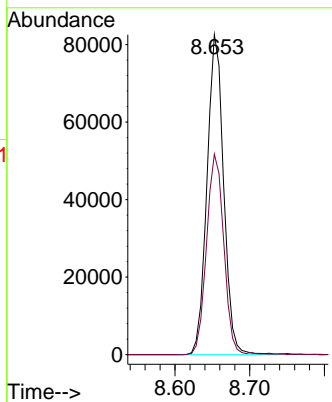
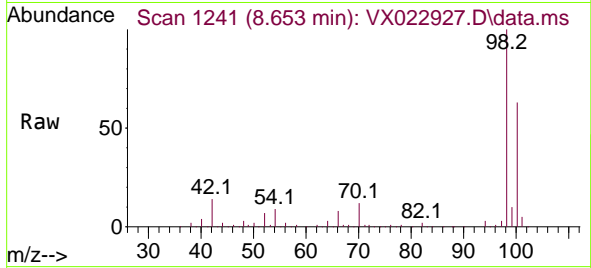




#50
 Toluene-d8
 Concen: 50.67 ug/l
 RT: 8.653 min Scan# 1241
 Delta R.T. -0.000 min
 Lab File: VX022927.D
 Acq: 25 Jun 2021 16:50

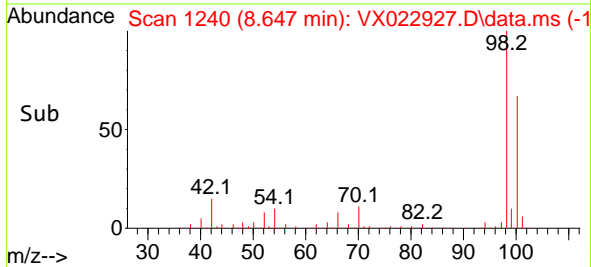
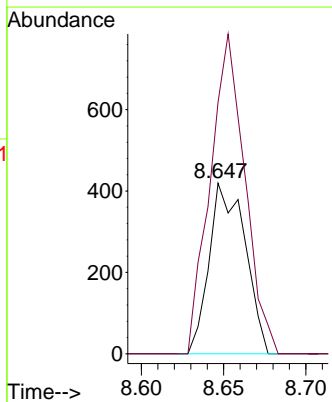
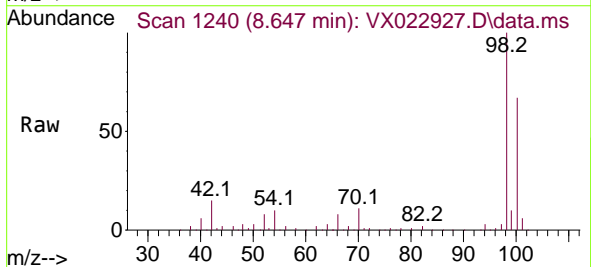
Instrument :
 MSVOA_X
ClientSampled :
 TT101D1-20210621DL

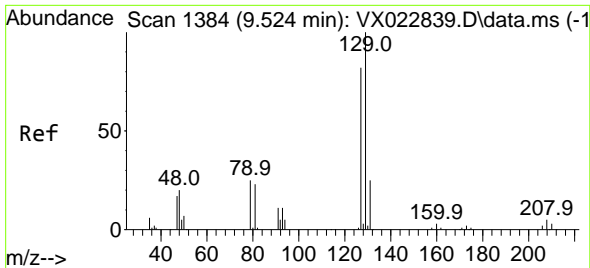
Tgt Ion: 98 Resp: 127760
 Ion Ratio Lower Upper
 98 100
 100 64.9 51.9 77.9



#51
 4-Methyl-2-Pentanone
 Concen: 0.51 ug/l
 RT: 8.647 min Scan# 1240
 Delta R.T. 0.067 min
 Lab File: VX022927.D
 Acq: 25 Jun 2021 16:50

Tgt Ion: 43 Resp: 636
 Ion Ratio Lower Upper
 43 100
 58 181.3 35.4 53.0#

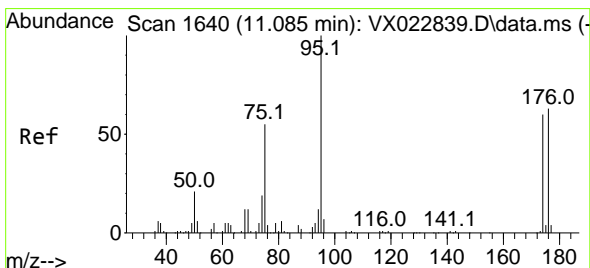
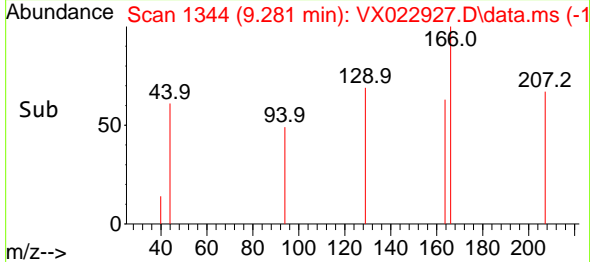
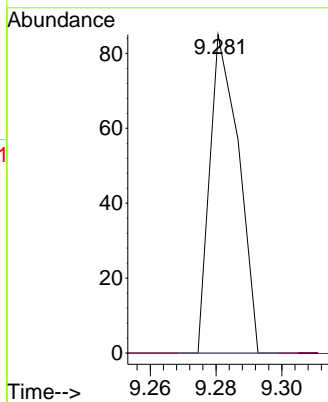
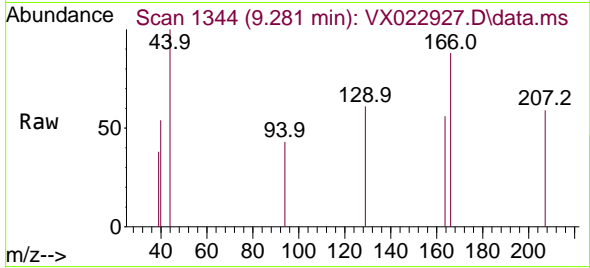




#60
 Dibromochloromethane
 Concen: 3.72 ug/l
 RT: 9.281 min Scan# 1344
 Delta R.T. -0.243 min
 Lab File: VX022927.D
 Acq: 25 Jun 2021 16:50

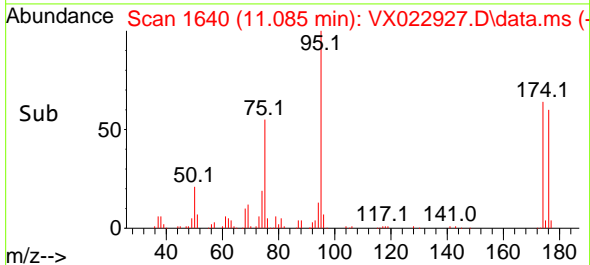
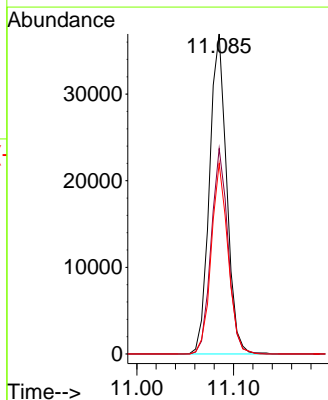
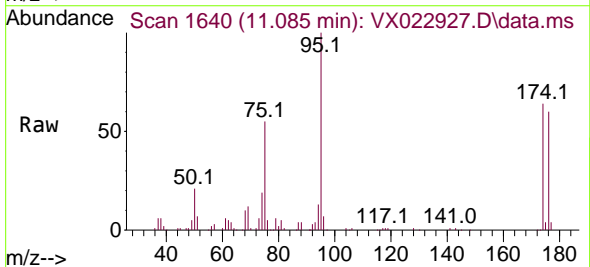
Instrument : MSVOA_X
 ClientSampleID : TT101D1-20210621DL

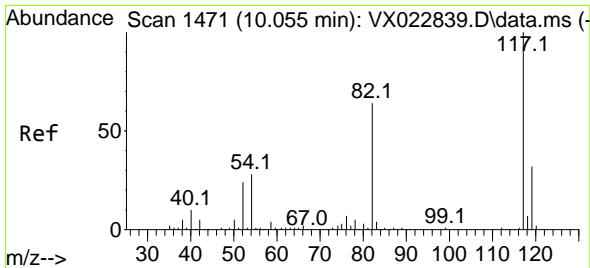
Tgt Ion: 129 Resp: 52
 Ion Ratio Lower Upper
 129 100
 127 0.0 38.4 115.2#



#62
 4-Bromofluorobenzene
 Concen: 48.40 ug/l
 RT: 11.085 min Scan# 1640
 Delta R.T. 0.000 min
 Lab File: VX022927.D
 Acq: 25 Jun 2021 16:50

Tgt Ion: 95 Resp: 45542
 Ion Ratio Lower Upper
 95 100
 174 63.0 0.0 154.6
 176 58.1 0.0 155.8

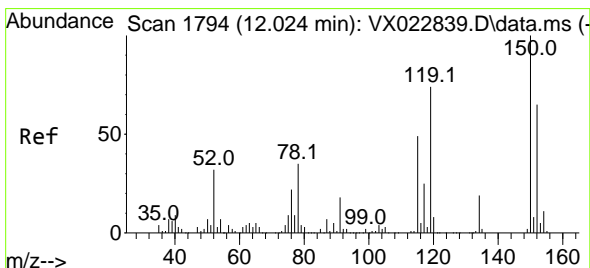
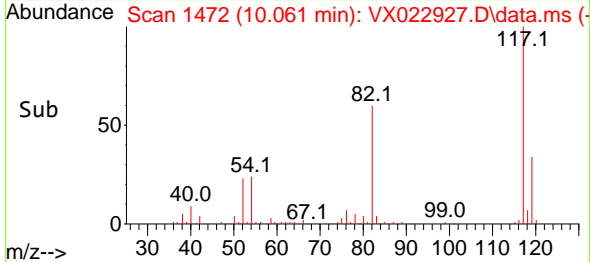
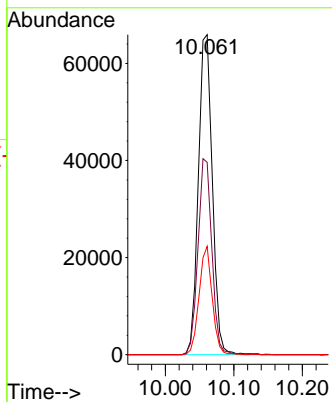
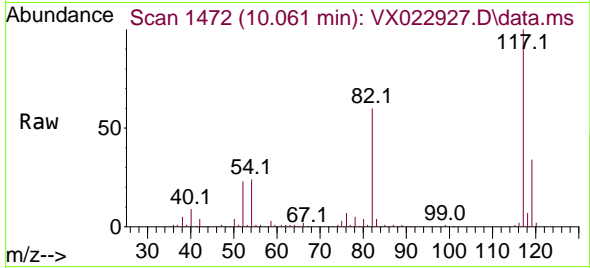




#63
 Chlorobenzene-d5
 Concen: 50.00 ug/l
 RT: 10.061 min Scan# 1472
 Delta R.T. 0.006 min
 Lab File: VX022927.D
 Acq: 25 Jun 2021 16:50

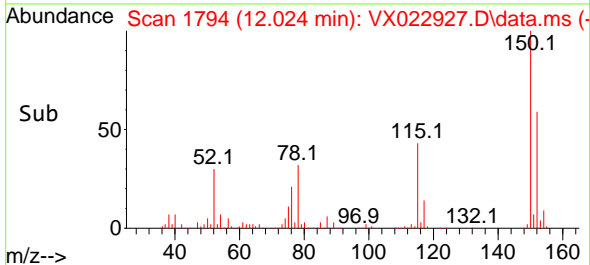
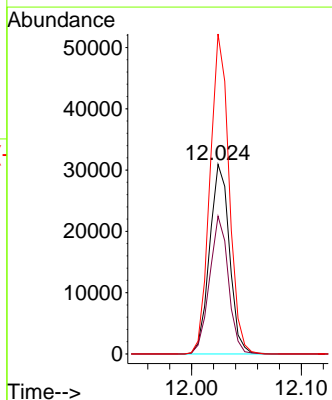
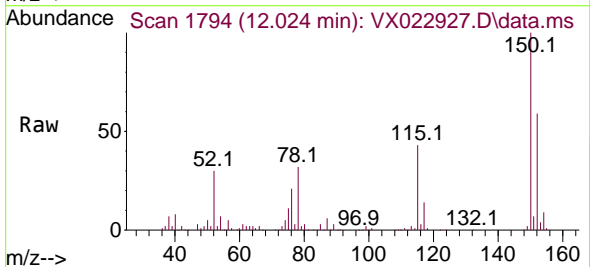
Instrument :
 MSVOA_X
ClientSampled :
 TT101D1-20210621DL

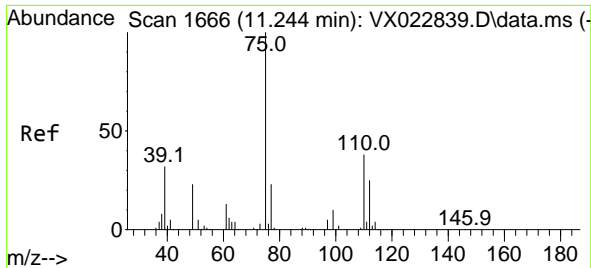
Tgt Ion	Resp	Lower	Upper
117	93763		
117	100		
82	60.1	47.4	71.2
119	33.9	26.6	39.8



#72
 1,4-Dichlorobenzene-d4
 Concen: 50.00 ug/l
 RT: 12.024 min Scan# 1794
 Delta R.T. 0.000 min
 Lab File: VX022927.D
 Acq: 25 Jun 2021 16:50

Tgt Ion	Resp	Lower	Upper
152	38863		
152	100		
115	68.9	41.1	123.3
150	162.2	0.0	349.0

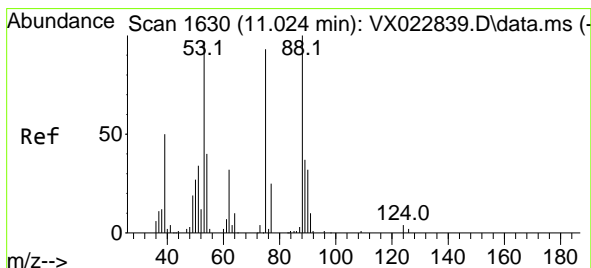
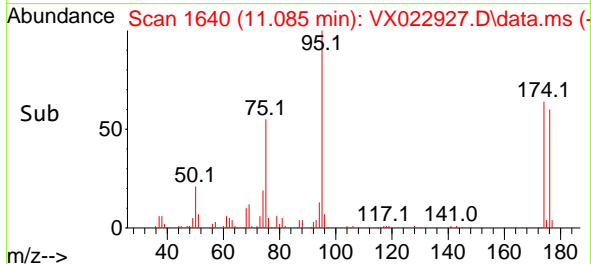
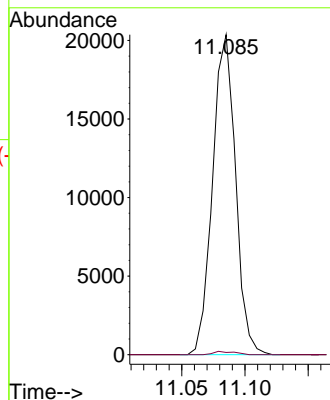
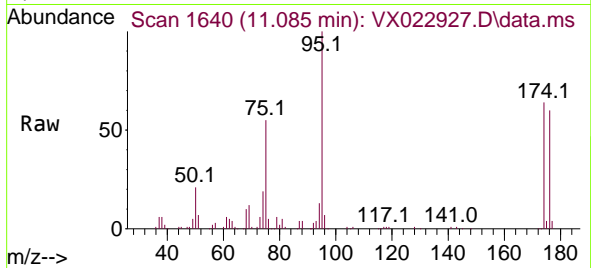




#76
 1,2,3-Trichloropropane
 Concen: 25.02 ug/l
 RT: 11.085 min Scan# 1640
 Delta R.T. -0.159 min
 Lab File: VX022927.D
 Acq: 25 Jun 2021 16:50

Instrument :
 MSVOA_X
 ClientSampled :
 TT101D1-20210621DL

Tgt Ion: 75 Resp: 25685
 Ion Ratio Lower Upper
 75 100
 77 1.0 19.1 57.5#



#81
 trans-1,4-Dichloro-2-butene
 Concen: 65.29 ug/l
 RT: 11.085 min Scan# 1640
 Delta R.T. 0.061 min
 Lab File: VX022927.D
 Acq: 25 Jun 2021 16:50

Tgt Ion: 75 Resp: 25685
 Ion Ratio Lower Upper
 75 100
 53 0.0 74.5 111.7#
 89 0.0 37.9 56.9#

