

Data Path : Z:\VOASRV\HPCHEM1\MSVOA X\DATA\VX062619\
 Data File : VX010455.D
 Acq On : 26 Jun 2019 12:16
 Operator : JC/SP
 Sample : K3527-22
 Misc : 5.0mL/MSVOA X/WATER
 ALS Vial : 9 Sample Multiplier: 1

Instrument :
 MSVOA_X
 ClientSampleId :
 CPA-RB1-M24W1-062219

Quant Time: Jun 27 01:11:25 2019
 Quant Method : Z:\VOASRV\HPCHEM1\MSVOA_X\METHOD\82X061919W.M
 Quant Title : SW846 8260
 QLast Update : Thu Jun 20 03:31:56 2019
 Response via : Initial Calibration

Internal Standards	R.T.	QIon	Response	Conc	Units	Dev(Min)
1) Pentafluorobenzene	5.67	168	262452	50.00	ug/l	0.00
34) 1,4-Difluorobenzene	6.86	114	402256	50.00	ug/l	0.00
63) Chlorobenzene-d5	10.11	117	360884	50.00	ug/l	0.00
72) 1,4-Dichlorobenzene-d4	12.08	152	167084	50.00	ug/l	0.00

System Monitoring Compounds

33) 1,2-Dichloroethane-d4	6.06	65	123778	50.30	ug/l	0.00
Spiked Amount	50.000		Recovery	=	100.60%	
35) Dibromofluoromethane	5.50	113	122151	49.63	ug/l	0.00
Spiked Amount	50.000		Recovery	=	99.26%	
50) Toluene-d8	8.71	98	474661	50.41	ug/l	0.00
Spiked Amount	50.000		Recovery	=	100.82%	
62) 4-Bromofluorobenzene	11.13	95	159304	46.86	ug/l	0.00
Spiked Amount	50.000		Recovery	=	93.72%	

Target Compounds

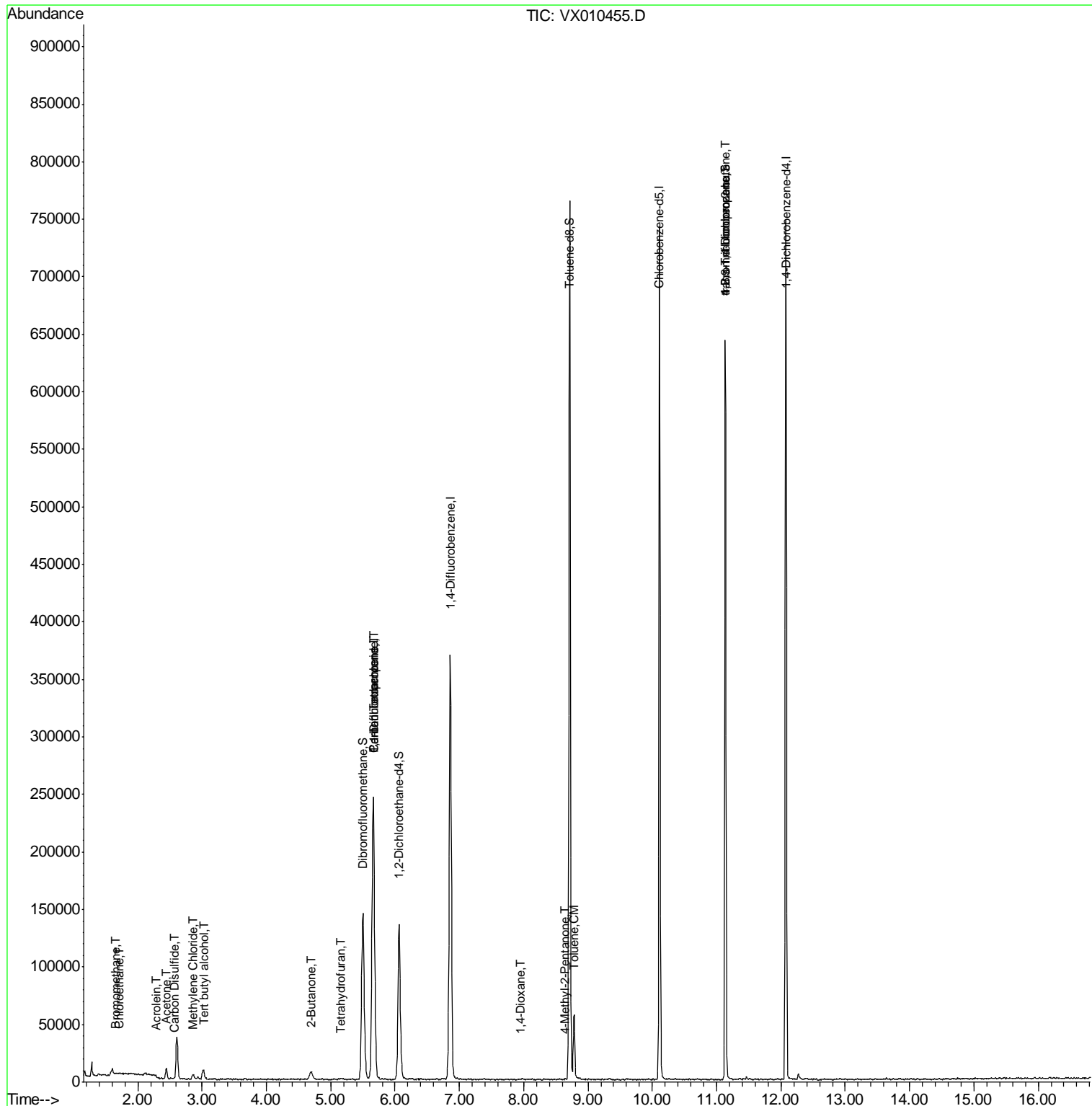
					Qvalue	
5) Bromomethane	1.65	94	274	0.242	ug/l	97
6) Chloroethane	1.71	64	646	0.471	ug/l #	41
11) Tert butyl alcohol	3.03	59	5265	8.177	ug/l #	82
13) Acrolein	2.28	56	218	0.510	ug/l #	76
16) Acetone	2.45	43	10331	8.377	ug/l	99
17) Carbon Disulfide	2.57	76	1731	0.284	ug/l	96
20) Methylene Chloride	2.85	84	2069	0.815	ug/l #	90
25) 2-Butanone	4.69	43	1665	0.920	ug/l	93
29) Tetrahydrofuran	5.15	42	1004	0.896	ug/l	94
36) 1,1-Dichloropropene	5.67	75	15615	4.885	ug/l #	48
38) Carbon Tetrachloride	5.66	117	23309	6.734	ug/l #	15
49) 1,4-Dioxane	7.96	88	23	0.316	ug/l #	1
51) 4-Methyl-2-Pentanone	8.64	43	901	0.259	ug/l	100
52) Toluene	8.79	92	21867	3.334	ug/l	99
76) 1,2,3-Trichloropropane	11.13	75	76292	25.057	ug/l #	33
81) trans-1,4-Dichloro-2-buten	11.13	75	76292	58.456	ug/l #	16

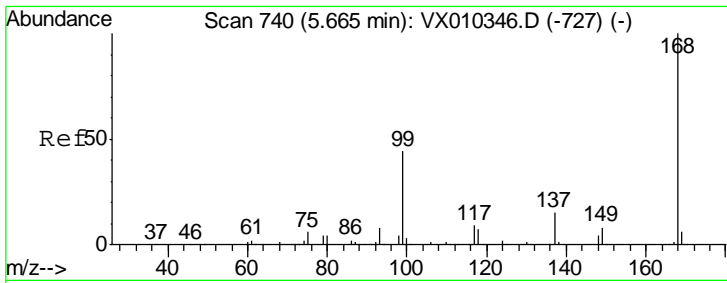
(#) = qualifier out of range (m) = manual integration (+) = signals summed

Data Path : Z:\VOASRV\HPCHEM1\MSVOA X\DATA\VX062619\
 Data File : VX010455.D
 Acq On : 26 Jun 2019 12:16
 Operator : JC/SP
 Sample : K3527-22
 Misc : 5.0mL/MSVOA X/WATER
 ALS Vial : 9 Sample Multiplier: 1

Instrument :
 MSVOA_X
 Client Sampled :
 CPA-RB1-M24W1-062219

Quant Time: Jun 27 01:11:25 2019
 Quant Method : Z:\VOASRV\HPCHEM1\MSVOA_X\METHOD\82X061919W.M
 Quant Title : SW846 8260
 QLast Update : Thu Jun 20 03:31:56 2019
 Response via : Initial Calibration

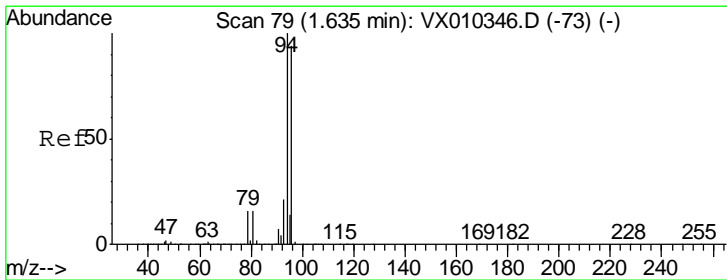
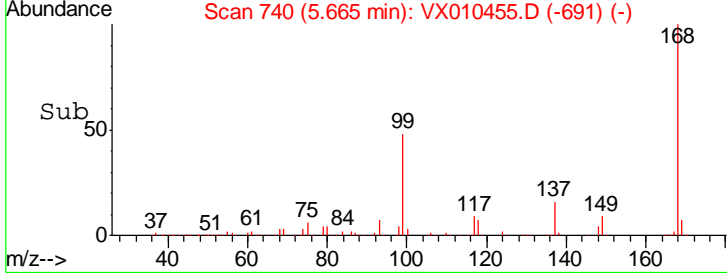
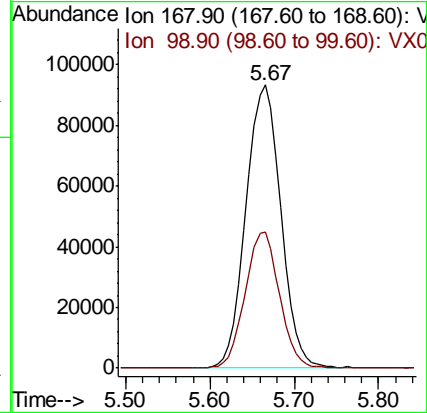
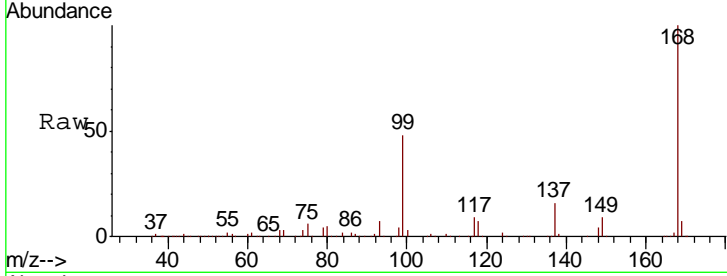




#1
 Pentafluorobenzene
 Concen: 50.000 ug/l
 RT: 5.67 min Scan# 740
 Delta R.T. 0.00 min
 Lab File: VX010455.D
 Acq: 26 Jun 2019 12:16

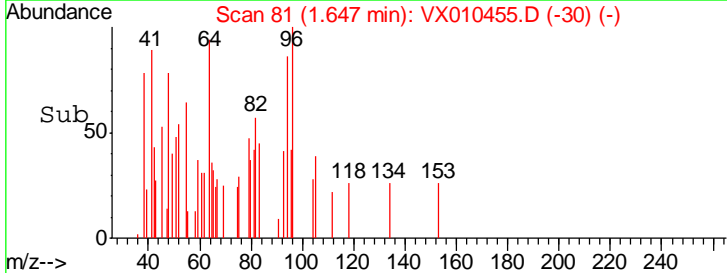
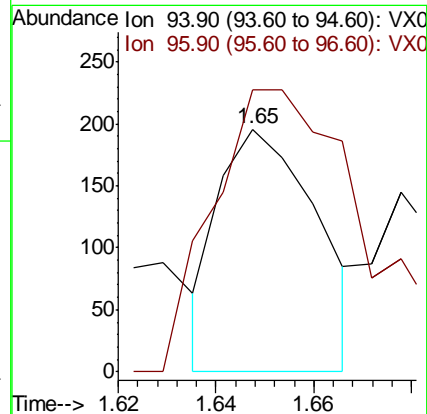
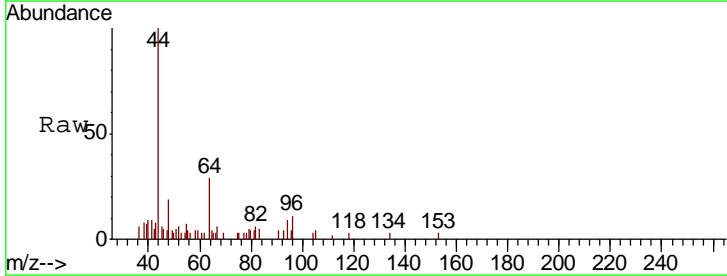
Instrument :
 MSVOA_X
 ClientSampled :
 CPA-RB1-M24W1-062219

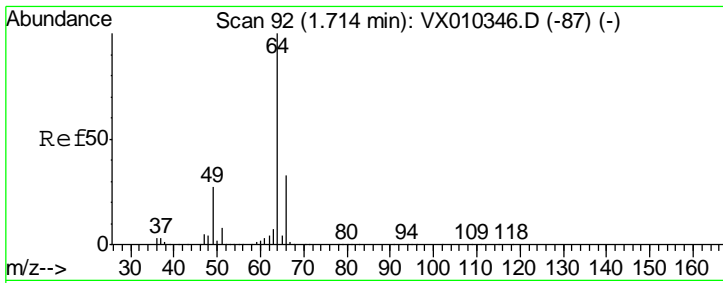
Tgt Ion	Resp	Lower	Upper
168	100		
99	48.1	35.5	53.3



#5
 Bromomethane
 Concen: 0.242 ug/l
 RT: 1.65 min Scan# 81
 Delta R.T. 0.01 min
 Lab File: VX010455.D
 Acq: 26 Jun 2019 12:16

Tgt Ion	Resp	Lower	Upper
94	100		
96	91.7	75.5	113.3

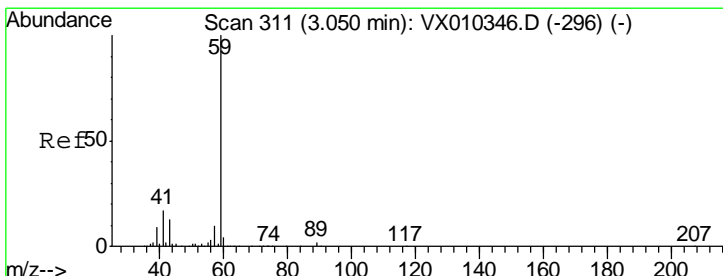
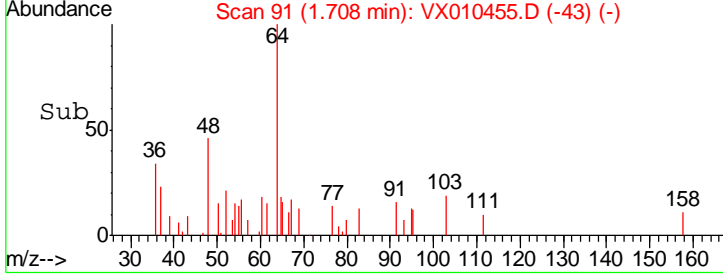
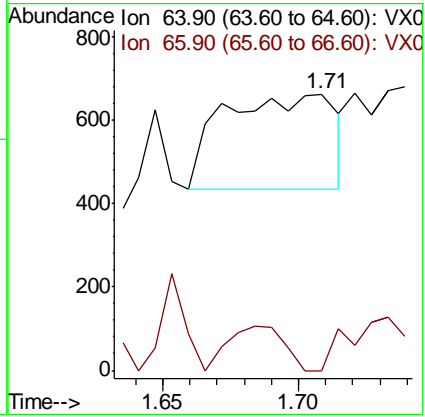
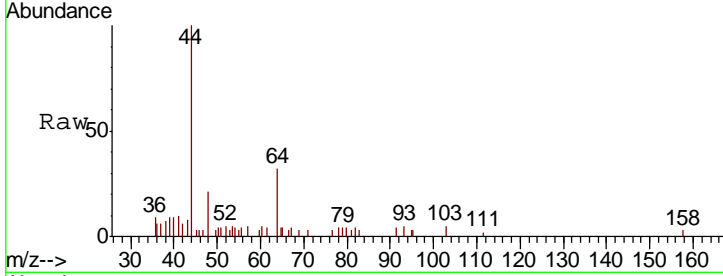




#6
 Chloroethane
 Concen: 0.471 ug/l
 RT: 1.71 min Scan# 91
 Delta R.T. -0.01 min
 Lab File: VX010455.D
 Acq: 26 Jun 2019 12:16

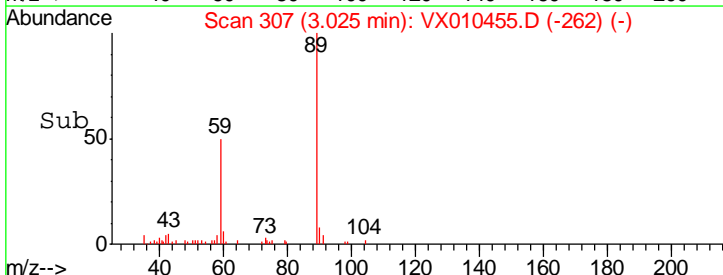
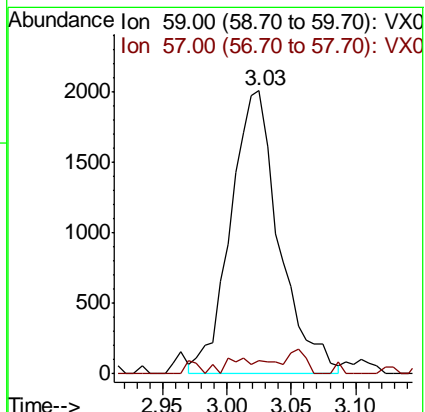
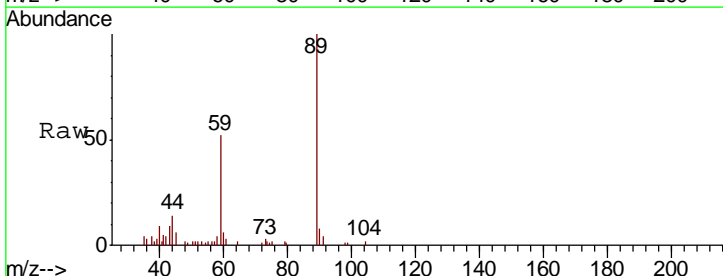
Instrument :
 MSVOA_X
ClientSampled :
 CPA-RB1-M24W1-062219

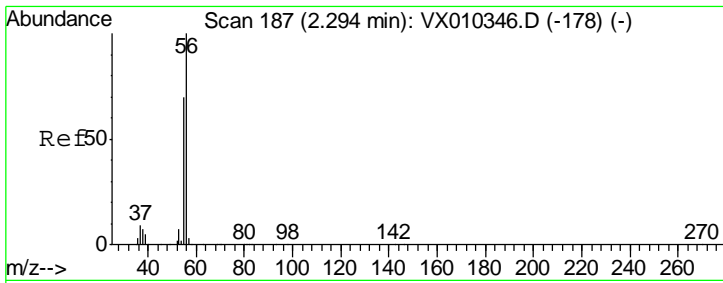
Tgt Ion	Resp	Lower	Upper
64	100		
66	0.0	26.6	40.0#



#11
 Tert butyl alcohol
 Concen: 8.177 ug/l
 RT: 3.03 min Scan# 307
 Delta R.T. -0.02 min
 Lab File: VX010455.D
 Acq: 26 Jun 2019 12:16

Tgt Ion	Resp	Lower	Upper
59	100		
57	3.1	7.7	11.5#

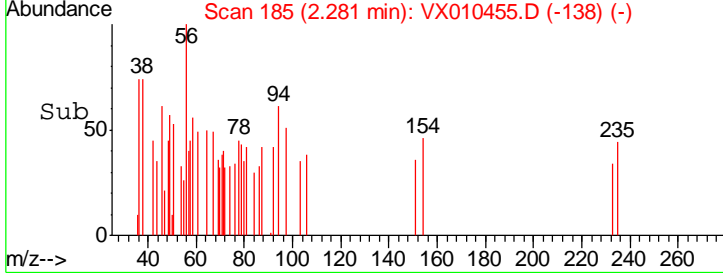
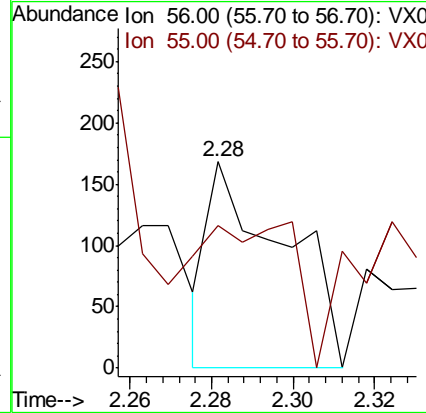
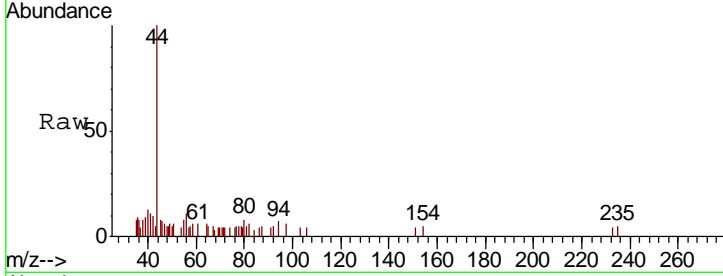




#13
 Acrolein
 Concen: 0.510 ug/l
 RT: 2.28 min Scan# 185
 Delta R.T. -0.01 min
 Lab File: VX010455.D
 Acq: 26 Jun 2019 12:16

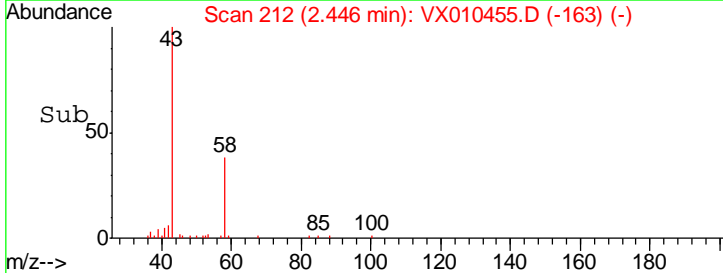
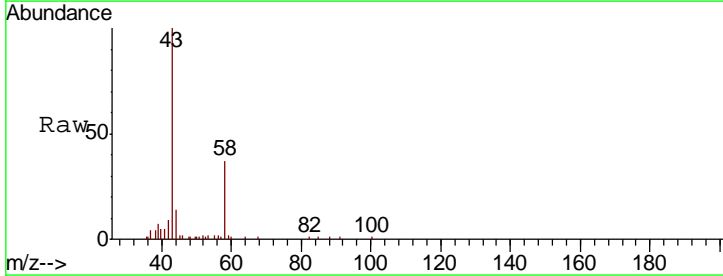
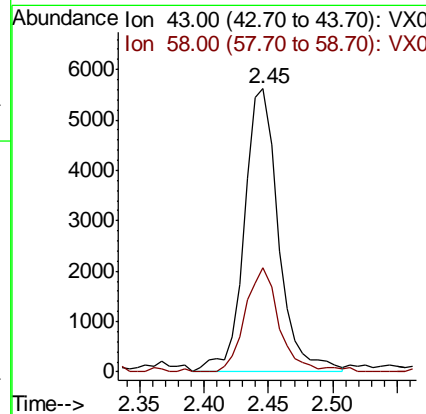
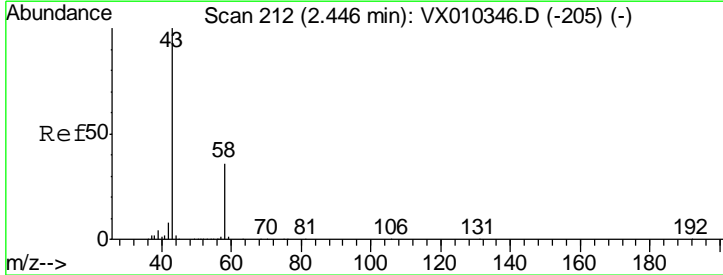
Instrument :
 MSVOA_X
ClientSampled :
 CPA-RB1-M24W1-062219

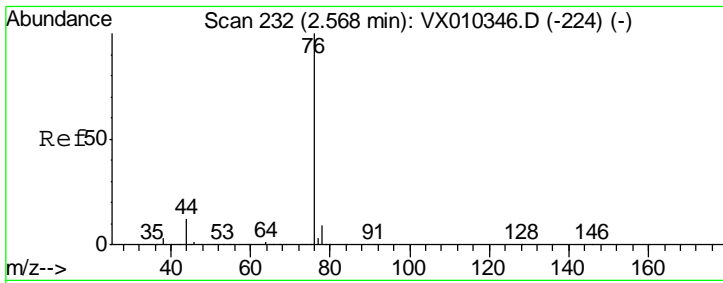
Tgt Ion	Resp	Lower	Upper
56	100		
55	90.8	56.9	85.3#



#16
 Acetone
 Concen: 8.377 ug/l
 RT: 2.45 min Scan# 212
 Delta R.T. 0.00 min
 Lab File: VX010455.D
 Acq: 26 Jun 2019 12:16

Tgt Ion	Resp	Lower	Upper
43	100		
58	36.7	28.9	43.3

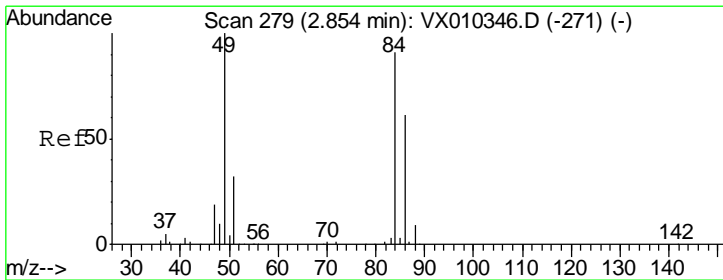
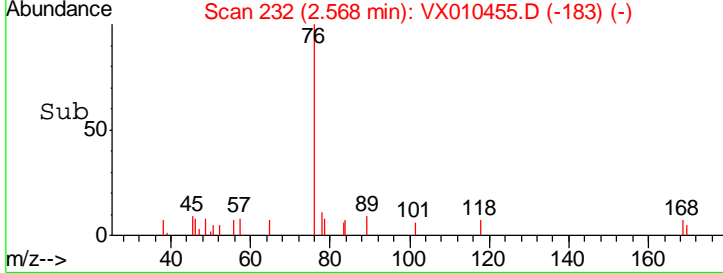
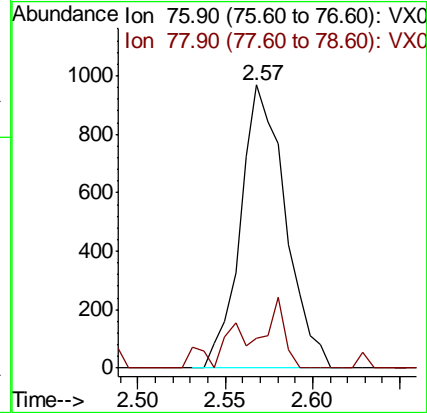
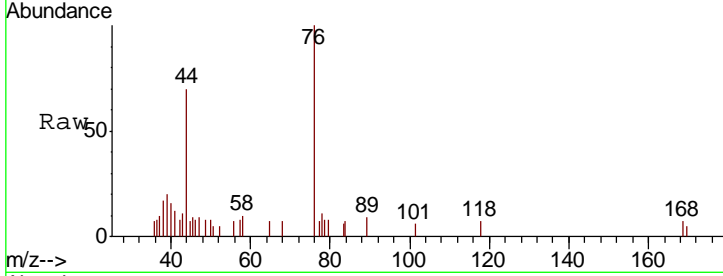




#17
 Carbon Disulfide
 Concen: 0.284 ug/l
 RT: 2.57 min Scan# 232
 Delta R.T. 0.00 min
 Lab File: VX010455.D
 Acq: 26 Jun 2019 12:16

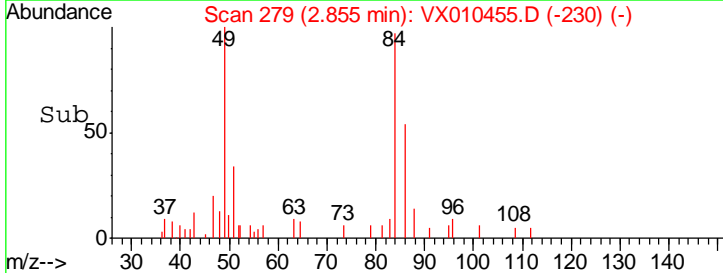
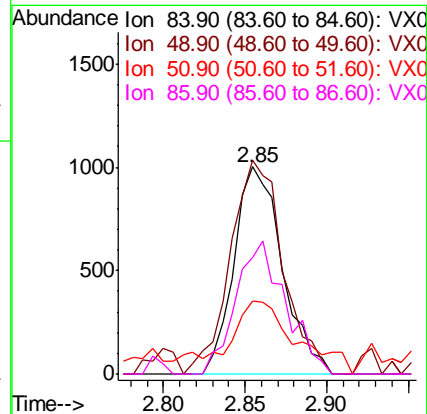
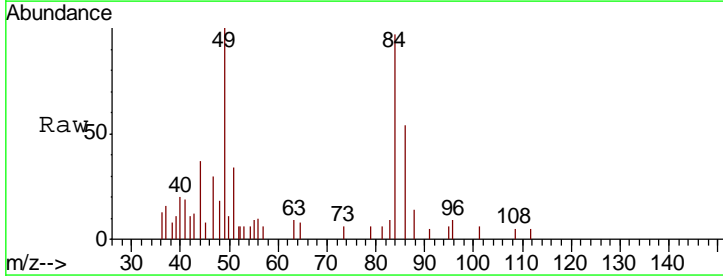
Instrument :
 MSVOA_X
 ClientSampled :
 CPA-RB1-M24W1-062219

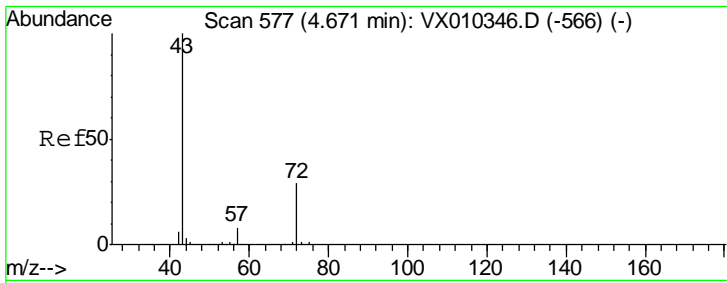
Tgt Ion	Resp	Lower	Upper
76	1731		
78	10.5	7.3	10.9



#20
 Methylene Chloride
 Concen: 0.815 ug/l
 RT: 2.85 min Scan# 279
 Delta R.T. 0.00 min
 Lab File: VX010455.D
 Acq: 26 Jun 2019 12:16

Tgt Ion	Resp	Lower	Upper
84	2069		
49	103.1	87.5	131.3
51	25.2	27.7	41.5#
86	56.0	53.4	80.0

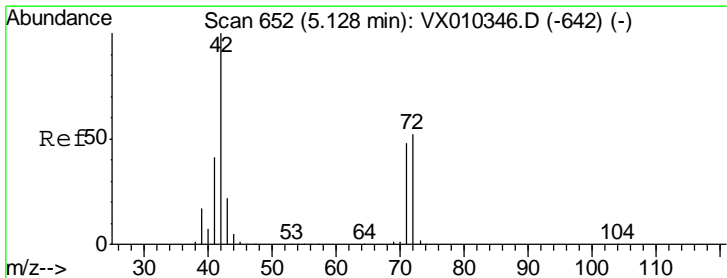
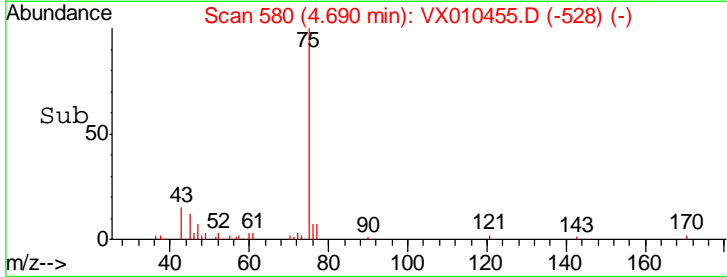
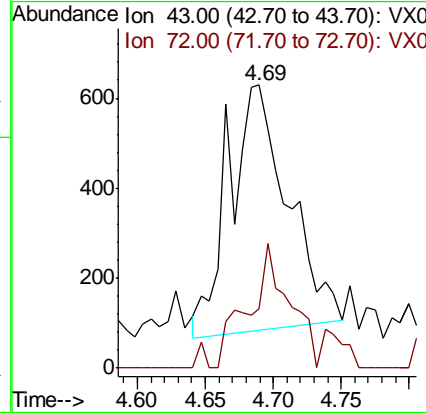
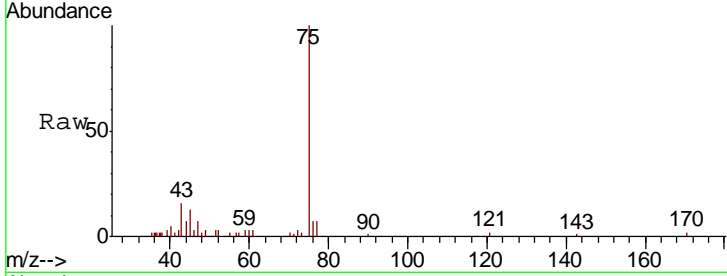




#25
 2-Butanone
 Concen: 0.920 ug/l
 RT: 4.69 min Scan# 580
 Delta R.T. 0.02 min
 Lab File: VX010455.D
 Acq: 26 Jun 2019 12:16

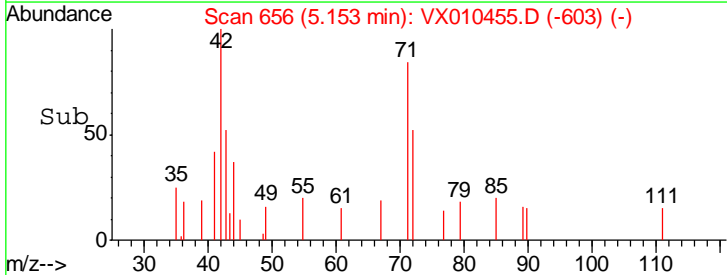
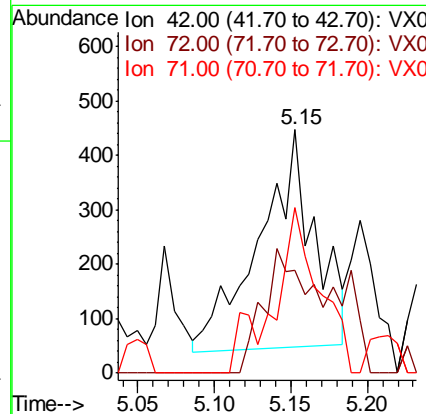
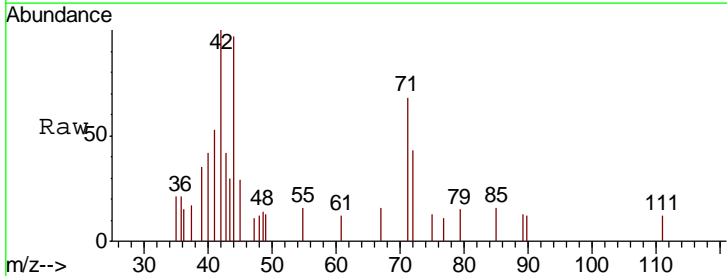
Instrument :
 MSVOA_X
 ClientSampled :
 CPA-RB1-M24W1-062219

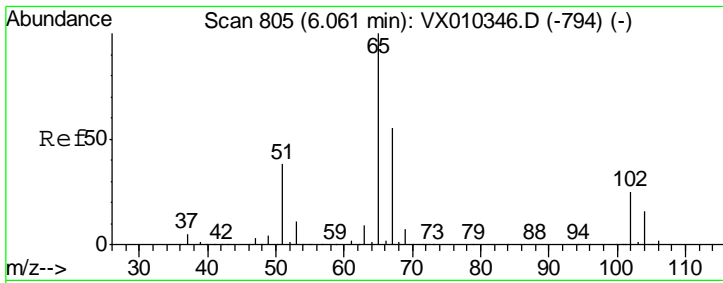
Tgt Ion	Resp	Lower	Upper
43	100		
72	25.5	23.3	34.9



#29
 Tetrahydrofuran
 Concen: 0.896 ug/l
 RT: 5.15 min Scan# 656
 Delta R.T. 0.02 min
 Lab File: VX010455.D
 Acq: 26 Jun 2019 12:16

Tgt Ion	Resp	Lower	Upper
42	100		
72	48.5	40.6	60.8
71	53.1	37.8	56.8

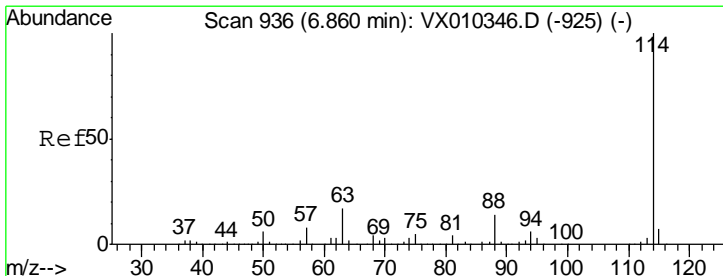
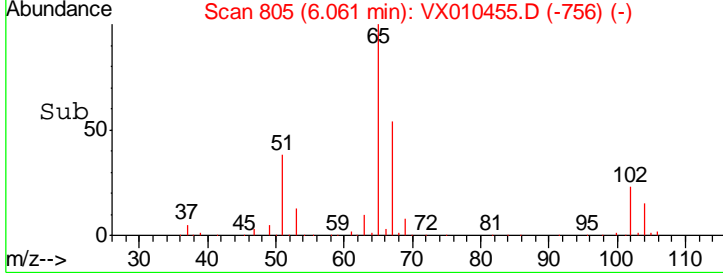
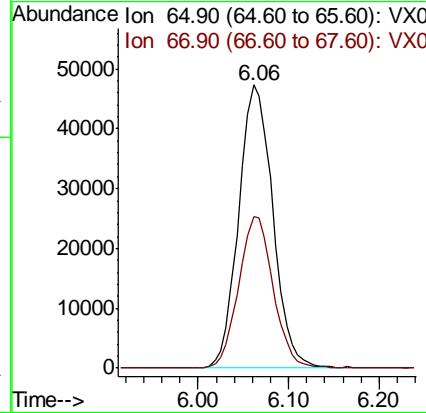
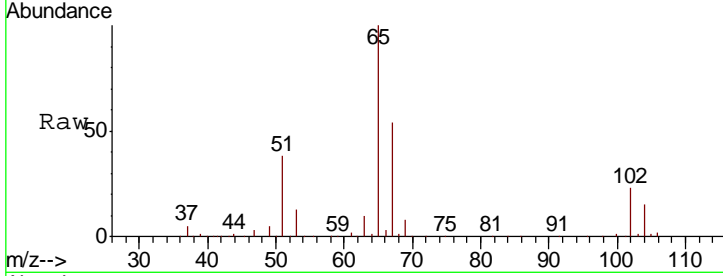




#33
 1,2-Dichloroethane-d4
 Concen: 50.301 ug/l
 RT: 6.06 min Scan# 805
 Delta R.T. 0.00 min
 Lab File: VX010455.D
 Acq: 26 Jun 2019 12:16

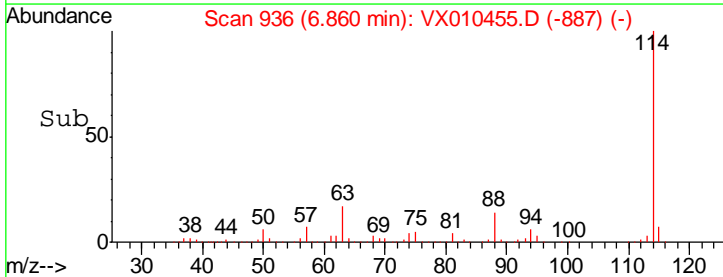
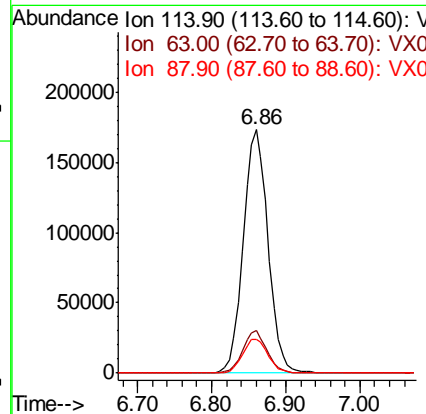
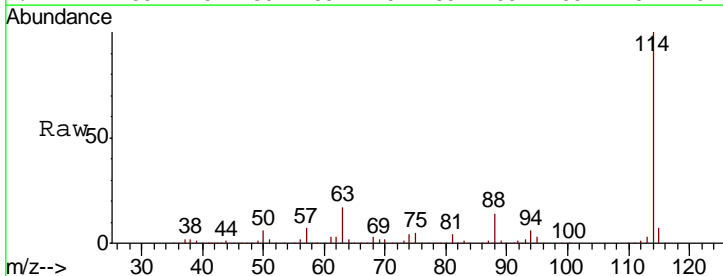
Instrument :
 MSVOA_X
 ClientSampled :
 CPA-RB1-M24W1-062219

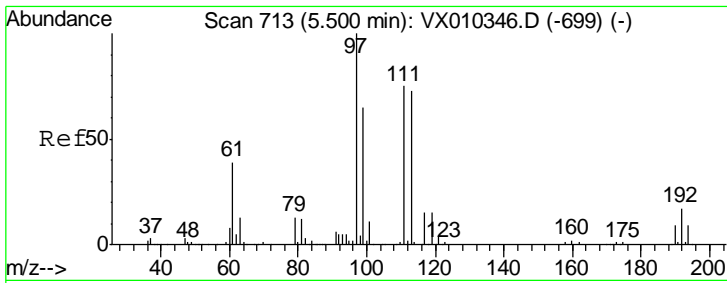
Tgt Ion	Resp	Lower	Upper
65	123778		
67	54.3	0.0	110.2



#34
 1,4-Difluorobenzene
 Concen: 50.000 ug/l
 RT: 6.86 min Scan# 936
 Delta R.T. 0.00 min
 Lab File: VX010455.D
 Acq: 26 Jun 2019 12:16

Tgt Ion	Resp	Lower	Upper
114	402256		
63	17.3	0.0	33.8
88	13.8	0.0	27.6

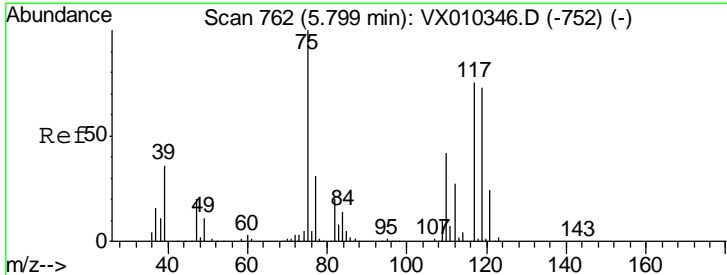
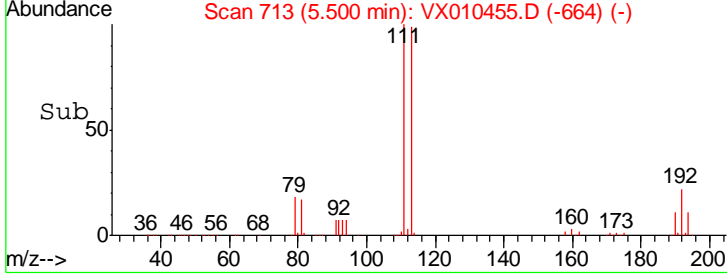
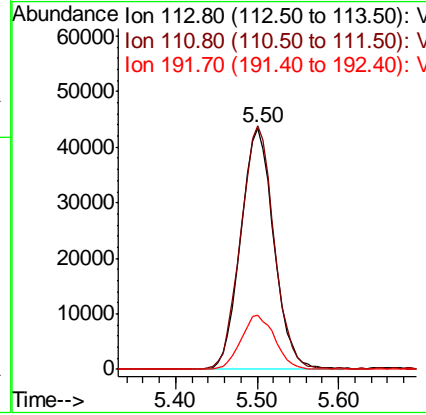
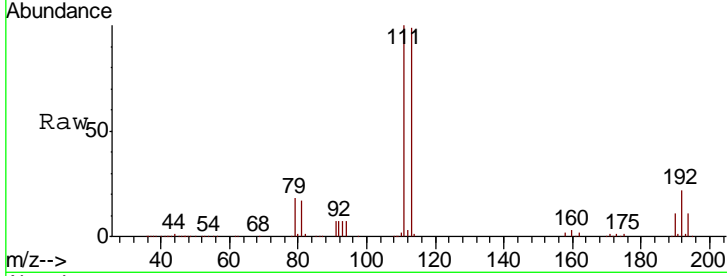




#35
 Dibromofluoromethane
 Concen: 49.632 ug/l
 RT: 5.50 min Scan# 713
 Delta R.T. 0.00 min
 Lab File: VX010455.D
 Acq: 26 Jun 2019 12:16

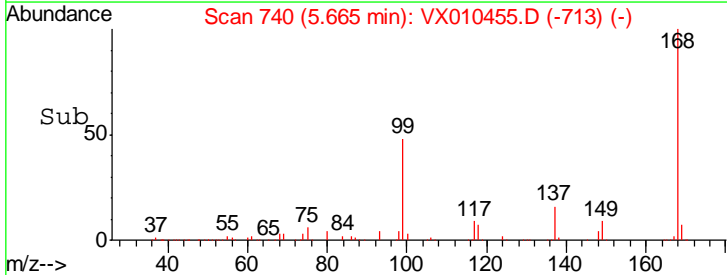
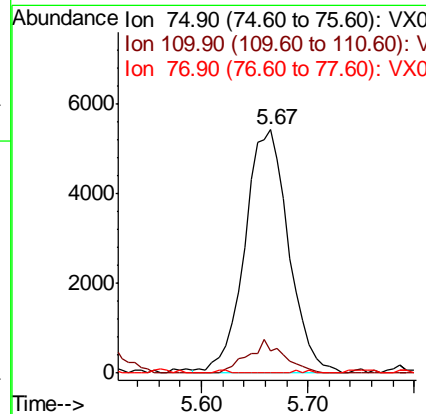
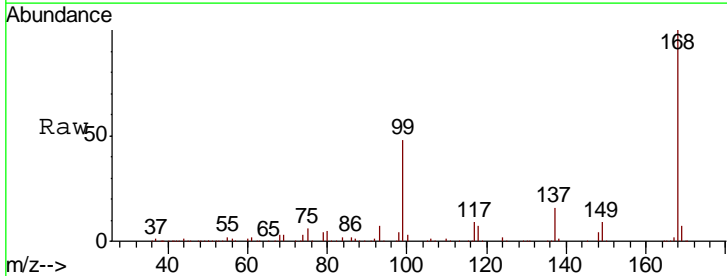
Instrument :
 MSVOA_X
 ClientSampled :
 CPA-RB1-M24W1-062219

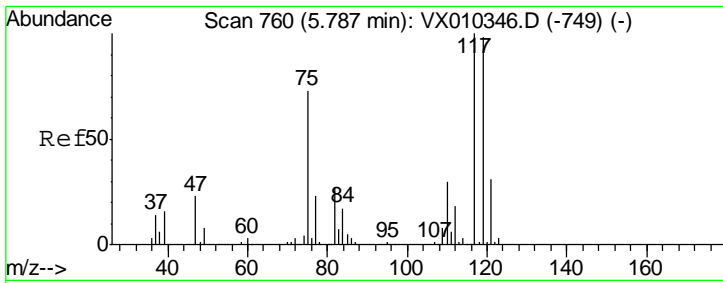
Tgt Ion	Resp	Lower	Upper
113	122151		
113	100		
111	101.9	81.2	121.8
192	22.9	18.6	27.8



#36
 1,1-Dichloropropene
 Concen: 4.885 ug/l
 RT: 5.67 min Scan# 740
 Delta R.T. -0.13 min
 Lab File: VX010455.D
 Acq: 26 Jun 2019 12:16

Tgt Ion	Resp	Lower	Upper
75	15615		
75	100		
110	11.3	20.8	62.2#
77	0.0	25.4	38.0#

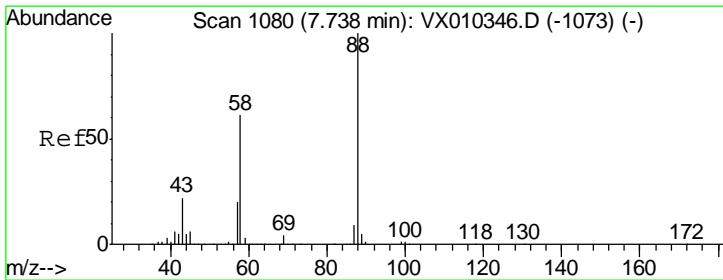
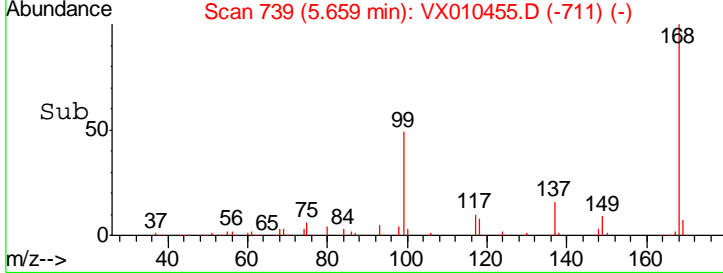
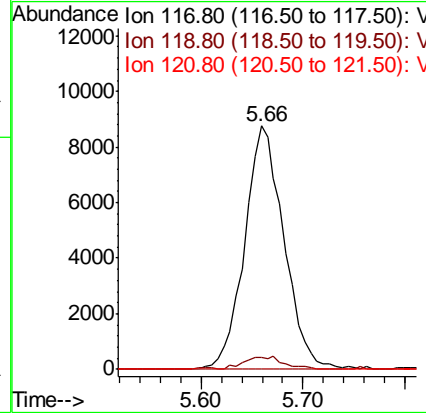
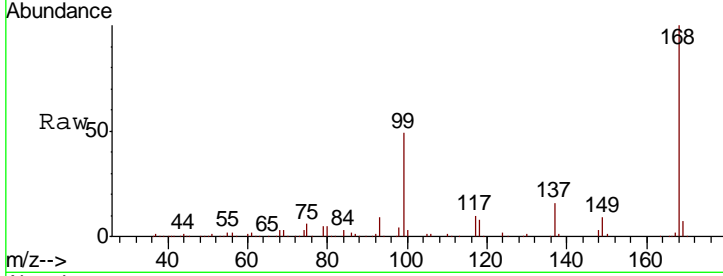




#38
 Carbon Tetrachloride
 Concen: 6.734 ug/l
 RT: 5.66 min Scan# 739
 Delta R.T. -0.13 min
 Lab File: VX010455.D
 Acq: 26 Jun 2019 12:16

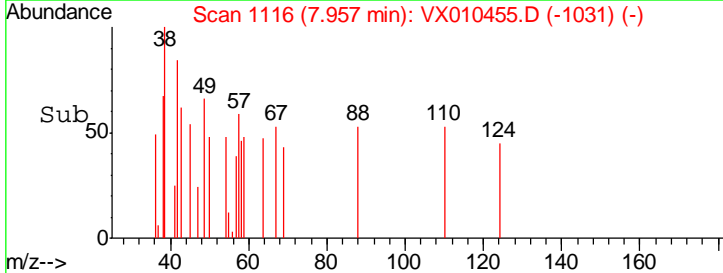
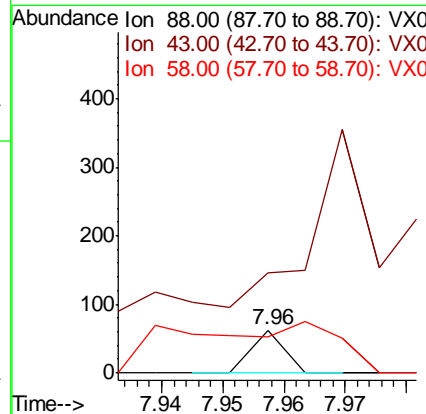
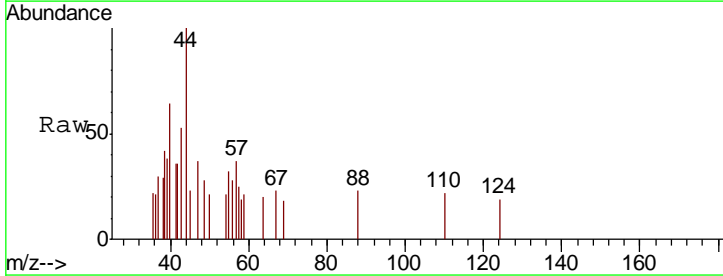
Instrument :
 MSVOA_X
 ClientSampled :
 CPA-RB1-M24W1-062219

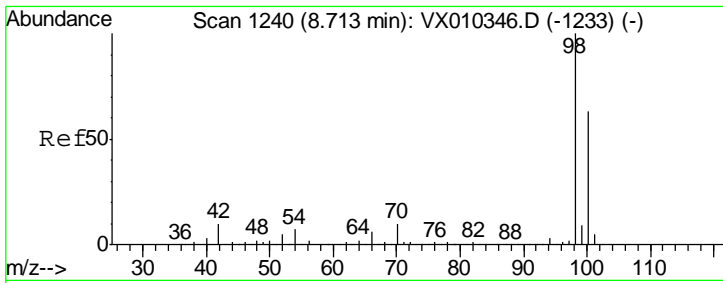
Tgt Ion	Resp	Lower	Upper
117	100		
119	5.1	78.2	117.4#
121	0.0	24.7	37.1#



#49
 1,4-Dioxane
 Concen: 0.316 ug/l
 RT: 7.96 min Scan# 1116
 Delta R.T. 0.22 min
 Lab File: VX010455.D
 Acq: 26 Jun 2019 12:16

Tgt Ion	Resp	Lower	Upper
88	100		
43	3273.9	20.2	30.2#
58	0.0	49.5	74.3#

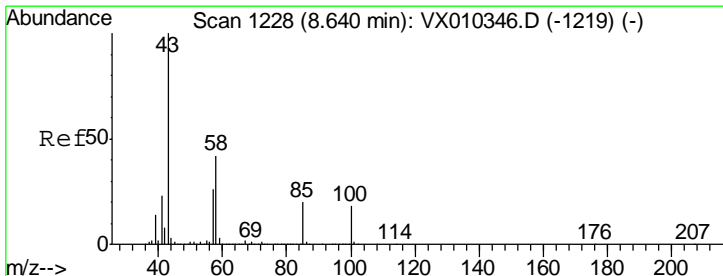
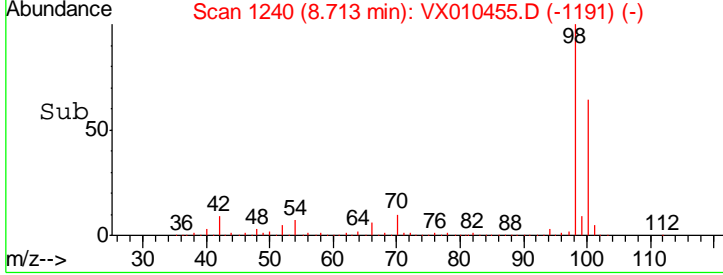
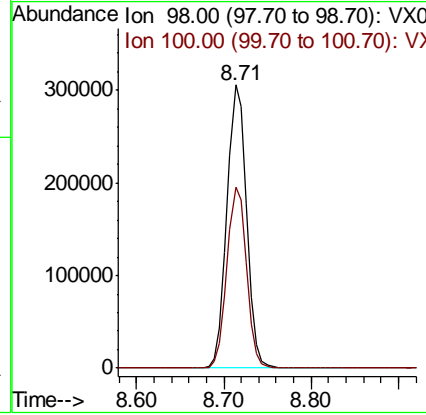
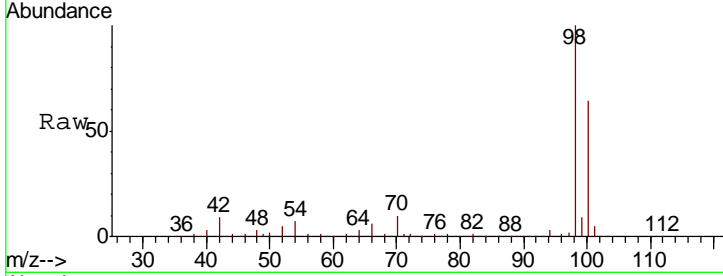




#50
 Toluene-d8
 Concen: 50.411 ug/l
 RT: 8.71 min Scan# 1240
 Delta R.T. 0.00 min
 Lab File: VX010455.D
 Acq: 26 Jun 2019 12:16

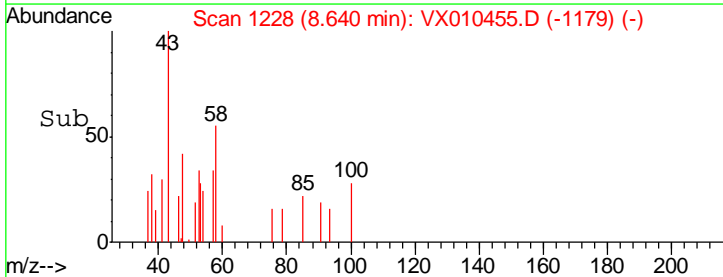
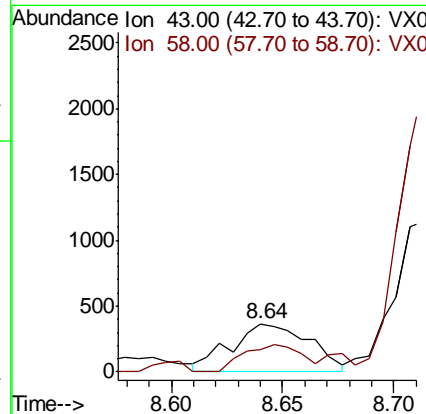
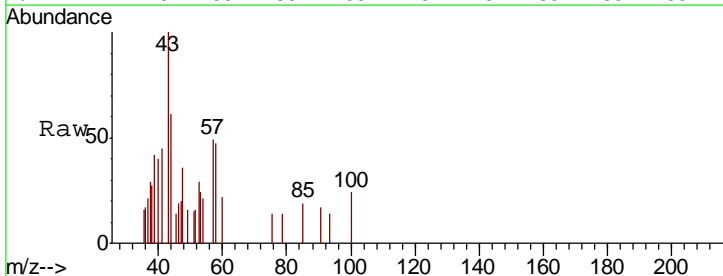
Instrument :
 MSVOA_X
ClientSampled :
 CPA-RB1-M24W1-062219

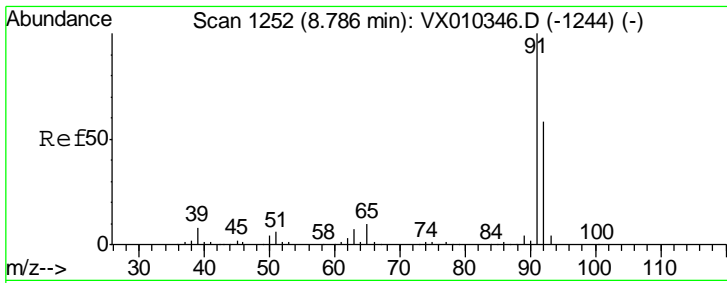
Tot Ion: 98 Resp: 474661
 Ion Ratio Lower Upper
 98 100
 100 63.6 51.6 77.4



#51
 4-Methyl-2-Pentanone
 Concen: 0.259 ug/l
 RT: 8.64 min Scan# 1228
 Delta R.T. 0.00 min
 Lab File: VX010455.D
 Acq: 26 Jun 2019 12:16

Tgt Ion: 43 Resp: 901
 Ion Ratio Lower Upper
 43 100
 58 42.0 33.5 50.3

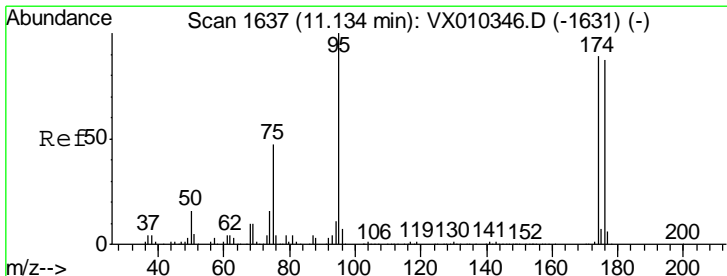
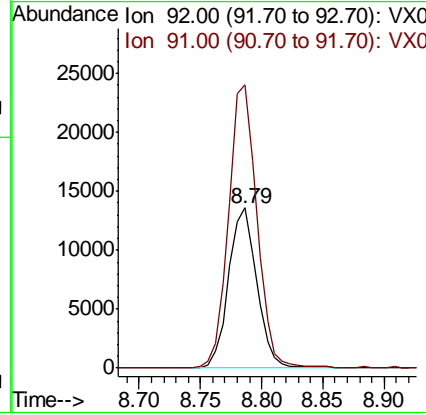
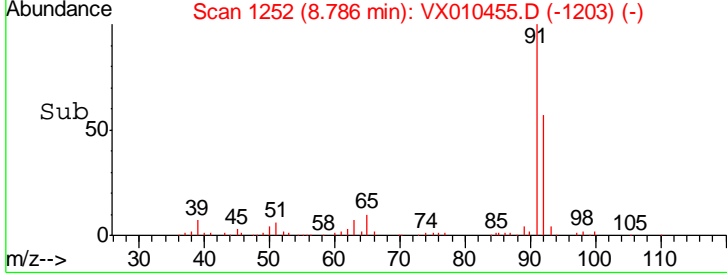
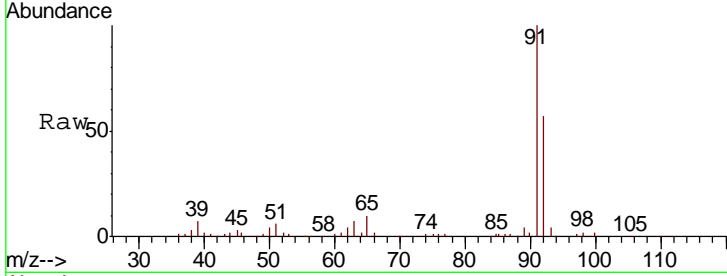




#52
 Toluene
 Concen: 3.334 ug/l
 RT: 8.79 min Scan# 1252
 Delta R.T. 0.00 min
 Lab File: VX010455.D
 Acq: 26 Jun 2019 12:16

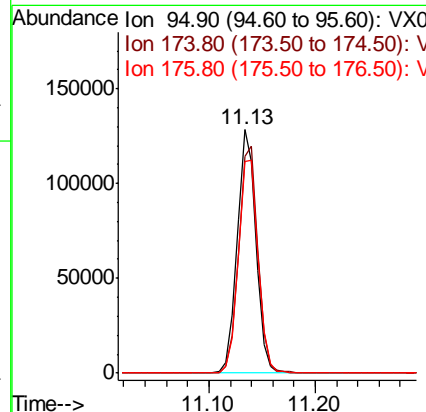
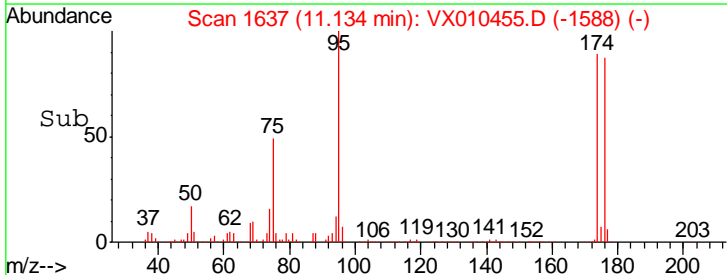
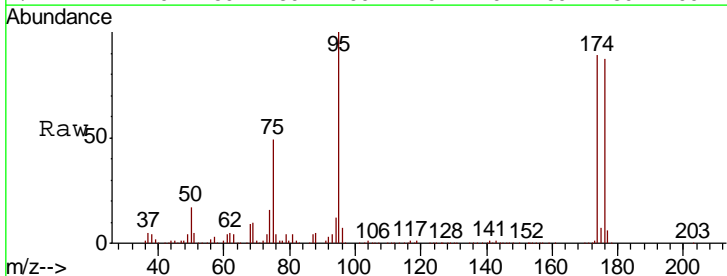
Instrument : MSVOA_X
 ClientSampled : CPA-RB1-M24W1-062219

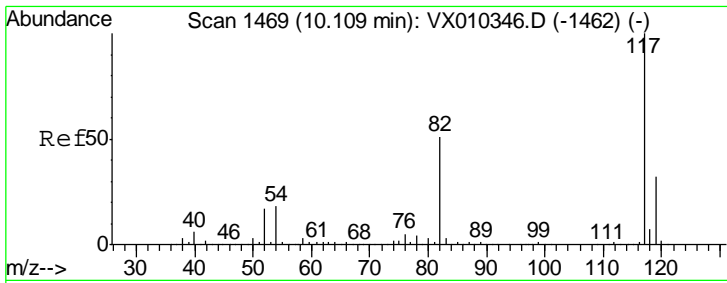
Tgt Ion	Resp	Lower	Upper
92	21867		
92	100		
91	176.4	139.8	209.6



#62
 4-Bromofluorobenzene
 Concen: 46.862 ug/l
 RT: 11.13 min Scan# 1637
 Delta R.T. 0.00 min
 Lab File: VX010455.D
 Acq: 26 Jun 2019 12:16

Tgt Ion	Resp	Lower	Upper
95	159304		
95	100		
174	95.4	0.0	187.6
176	92.3	0.0	184.0

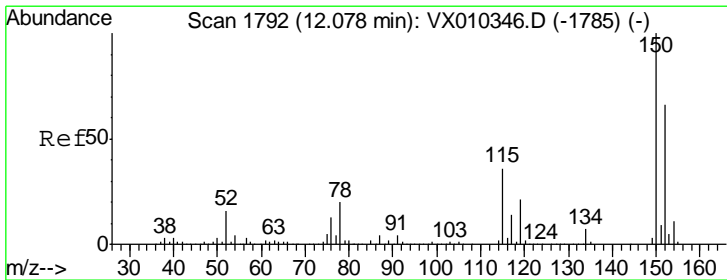
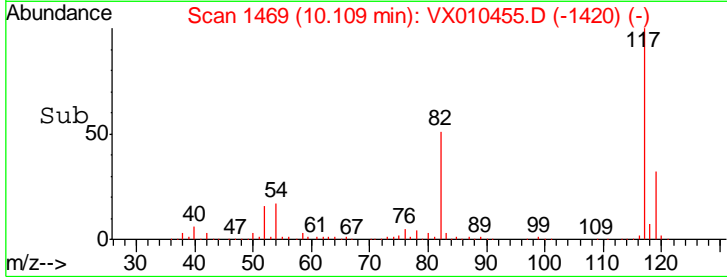
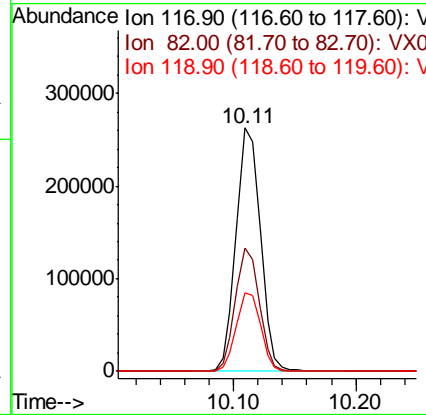
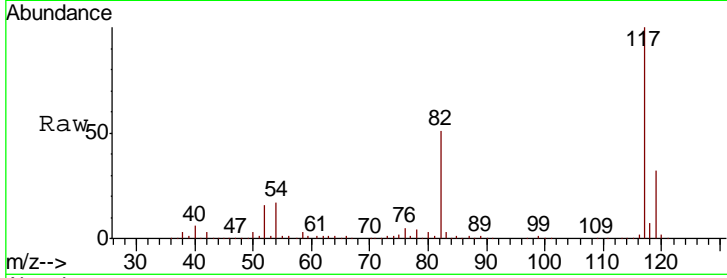




#63
 Chlorobenzene-d5
 Concen: 50.000 ug/l
 RT: 10.11 min Scan# 1469
 Delta R.T. 0.00 min
 Lab File: VX010455.D
 Acq: 26 Jun 2019 12:16

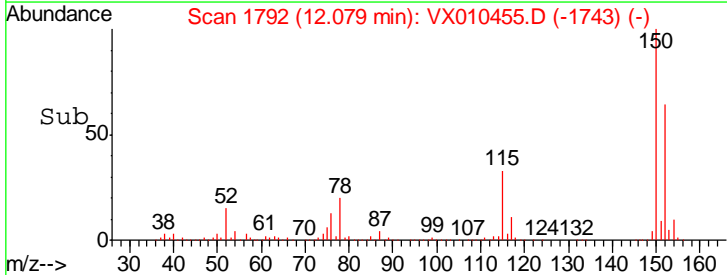
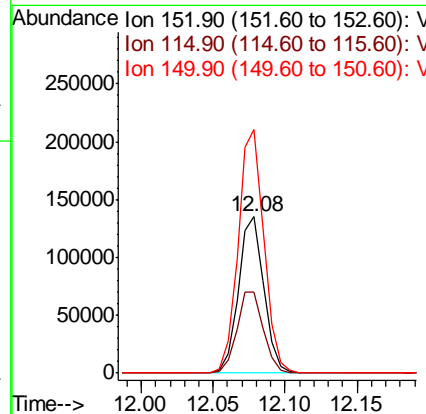
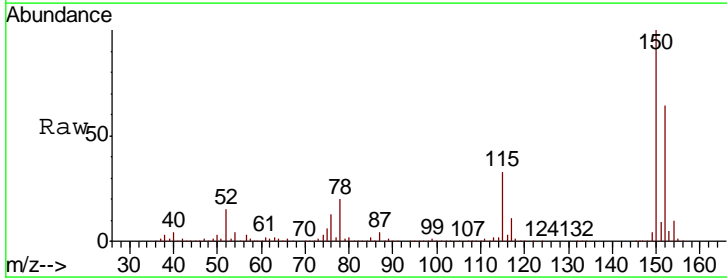
Instrument :
 MSVOA_X
 ClientSampled :
 CPA-RB1-M24W1-062219

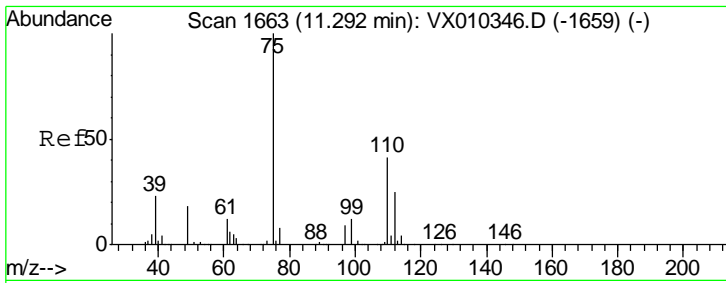
Tgt Ion	Resp	Lower	Upper
117	360884		
82	50.7	41.2	61.8
119	32.4	25.5	38.3



#72
 1,4-Dichlorobenzene-d4
 Concen: 50.000 ug/l
 RT: 12.08 min Scan# 1792
 Delta R.T. 0.00 min
 Lab File: VX010455.D
 Acq: 26 Jun 2019 12:16

Tgt Ion	Resp	Lower	Upper
152	167084		
115	54.2	38.6	115.7
150	157.8	0.0	347.4

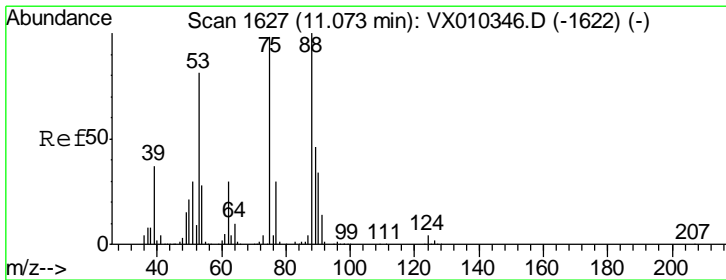
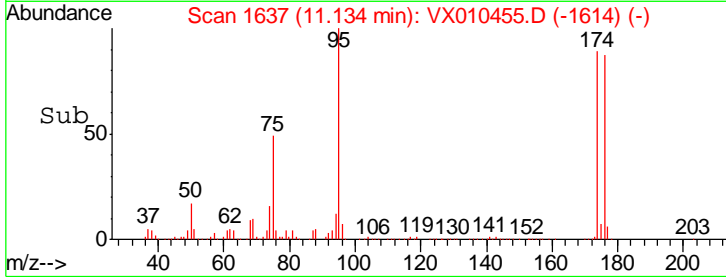
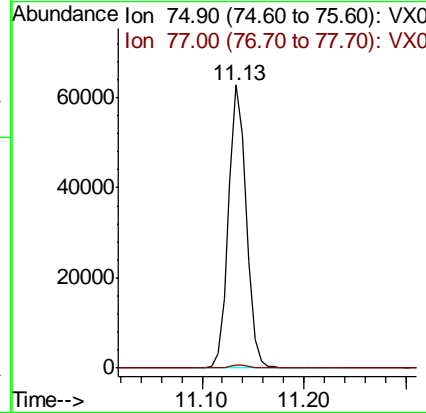
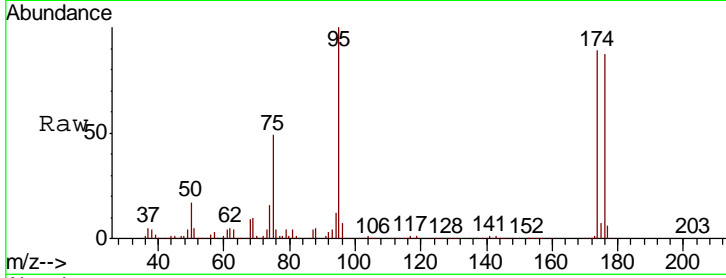




#76
 1,2,3-Trichloropropane
 Concen: 25.057 ug/l
 RT: 11.13 min Scan# 1637
 Delta R.T. -0.16 min
 Lab File: VX010455.D
 Acq: 26 Jun 2019 12:16

Instrument :
 MSVOA_X
 ClientSampled :
 CPA-RB1-M24W1-062219

Tgt Ion: 75 Resp: 76292
 Ion Ratio Lower Upper
 75 100
 77 1.3 22.6 67.8#



#81
 trans-1,4-Dichloro-2-butene
 Concen: 58.456 ug/l
 RT: 11.13 min Scan# 1637
 Delta R.T. 0.06 min
 Lab File: VX010455.D
 Acq: 26 Jun 2019 12:16

Tgt Ion: 75 Resp: 76292
 Ion Ratio Lower Upper
 75 100
 53 0.2 66.1 99.1#
 89 0.0 37.8 56.6#

