

Data Path : Z:\voasrv\HPCHEM1\MSVOA_X\Data\VX062623\
 Data File : VX036325.D
 Acq On : 26 Jun 2023 12:36
 Operator : JC/MD
 Sample : VX0626WBL01
 Misc : 5.0mL/MSVOA_X/WATER
 ALS Vial : 3 Sample Multiplier: 1

Instrument :
 MSVOA_X
 ClientSampleId :
 VX0626WBL01

Quant Time: Jun 27 04:21:02 2023
 Quant Method : Z:\voasrv\HPCHEM1\MSVOA_X\Method\82X062323W.M
 Quant Title : SW846 8260
 QLast Update : Fri Jun 23 15:03:28 2023
 Response via : Initial Calibration

Compound	R.T.	QIon	Response	Conc	Units	Dev(Min)

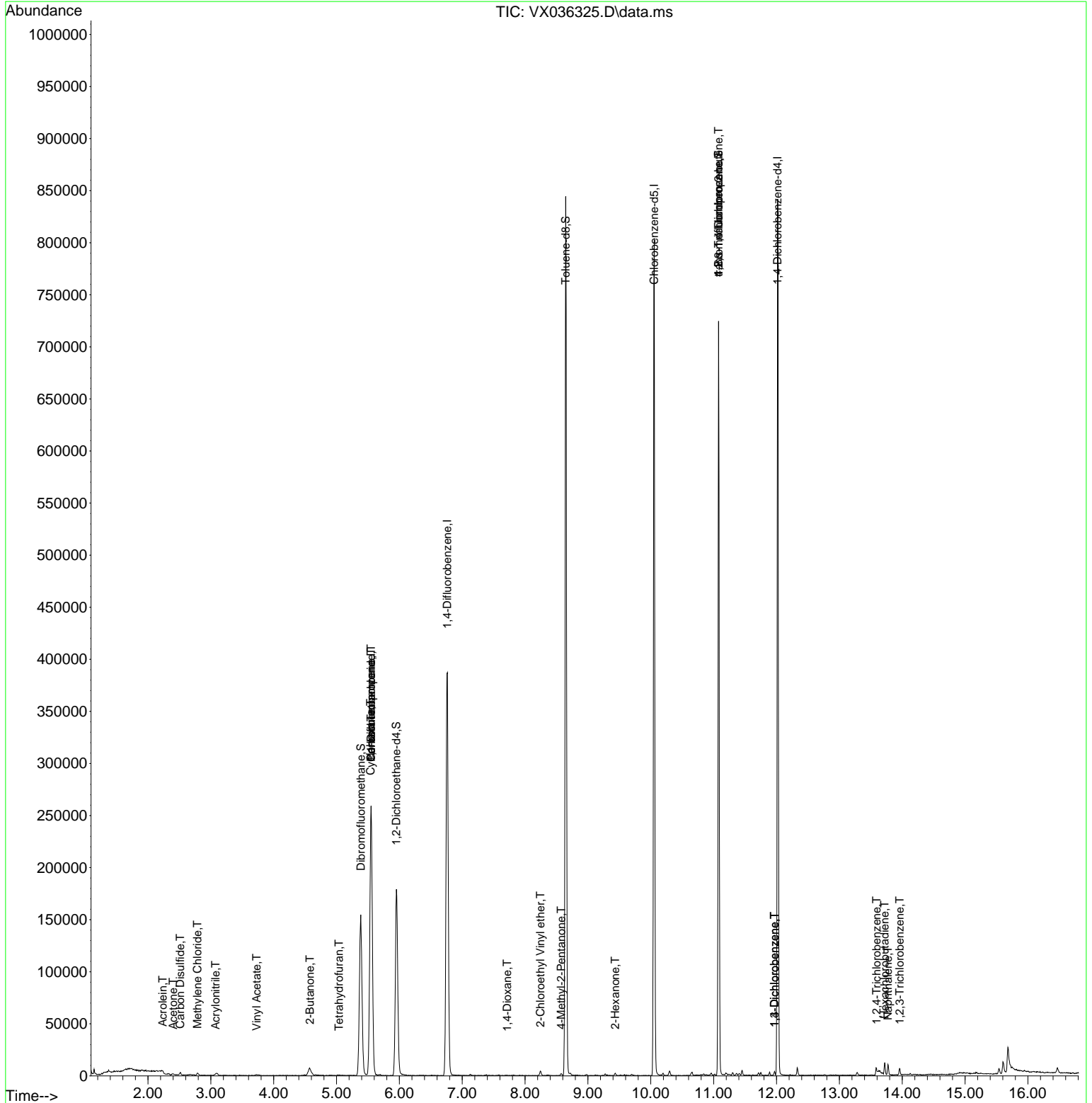
Internal Standards						
1) Pentafluorobenzene	5.550	168	241652	50.000	ug/l	0.00
34) 1,4-Difluorobenzene	6.763	114	400679	50.000	ug/l	0.00
63) Chlorobenzene-d5	10.055	117	361315	50.000	ug/l	0.00
72) 1,4-Dichlorobenzene-d4	12.018	152	173704	50.000	ug/l	0.00
System Monitoring Compounds						
33) 1,2-Dichloroethane-d4	5.952	65	171750	49.583	ug/l	0.00
Spiked Amount	50.000	Range	78 - 117	Recovery	=	99.160%
35) Dibromofluoromethane	5.385	113	133478	50.522	ug/l	0.00
Spiked Amount	50.000	Range	75 - 124	Recovery	=	101.040%
50) Toluene-d8	8.647	98	502288	50.902	ug/l	0.00
Spiked Amount	50.000	Range	92 - 112	Recovery	=	101.800%
62) 4-Bromofluorobenzene	11.079	95	179348	51.600	ug/l	0.00
Spiked Amount	50.000	Range	83 - 123	Recovery	=	103.200%
Target Compounds						
						Qvalue
13) Acrolein	2.233	56	841	0.971	ug/l #	70
15) Acrylonitrile	3.075	53	1010	0.632	ug/l #	84
16) Acetone	2.398	43	1684	1.137	ug/l	97
17) Carbon Disulfide	2.514	76	3293	0.488	ug/l #	91
20) Methylene Chloride	2.788	84	949	0.298	ug/l #	76
23) Vinyl Acetate	3.727	43	1953	0.301	ug/l	98
25) 2-Butanone	4.574	43	819	0.385	ug/l #	83
29) Tetrahydrofuran	5.038	42	686	0.507	ug/l #	46
31) Cyclohexane	5.544	56	5580	1.257	ug/l #	30
36) 1,1-Dichloropropene	5.550	75	19416	4.930	ug/l #	50
38) Carbon Tetrachloride	5.550	117	24989	6.947	ug/l #	15
49) 1,4-Dioxane	7.714	88	25	0.353	ug/l #	94
51) 4-Methyl-2-Pentanone	8.574	43	1321	0.320	ug/l #	74
58) 2-Chloroethyl Vinyl ether	8.244	63	1947	0.799	ug/l	94
59) 2-Hexanone	9.433	43	1236	0.410	ug/l	92
76) 1,2,3-Trichloropropane	11.079	75	94022	25.376	ug/l #	38
81) trans-1,4-Dichloro-2-b...	11.079	75	94022	82.719	ug/l #	5
87) 1,3-Dichlorobenzene	11.969	146	1240	0.210	ug/l	97
88) 1,4-Dichlorobenzene	11.969	146	1240	0.206	ug/l	96
93) 1,2,4-Trichlorobenzene	13.591	180	1539	0.429	ug/l	85
94) Hexachlorobutadiene	13.719	225	1793	1.220	ug/l	89
95) Naphthalene	13.774	128	6941	0.585	ug/l	99
96) 1,2,3-Trichlorobenzene	13.963	180	1635	0.467	ug/l	96

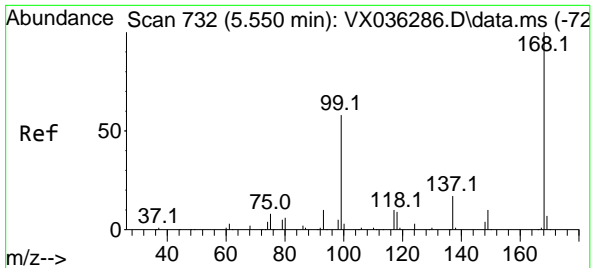
(#) = qualifier out of range (m) = manual integration (+) = signals summed

Data Path : Z:\voasrv\HPCHEM1\MSVOA_X\Data\VX062623\
 Data File : VX036325.D
 Acq On : 26 Jun 2023 12:36
 Operator : JC/MD
 Sample : VX0626WBL01
 Misc : 5.0mL/MSVOA_X/WATER
 ALS Vial : 3 Sample Multiplier: 1

Instrument :
 MSVOA_X
ClientSampleId :
 VX0626WBL01

Quant Time: Jun 27 04:21:02 2023
 Quant Method : Z:\voasrv\HPCHEM1\MSVOA_X\Method\82X062323W.M
 Quant Title : SW846 8260
 QLast Update : Fri Jun 23 15:03:28 2023
 Response via : Initial Calibration

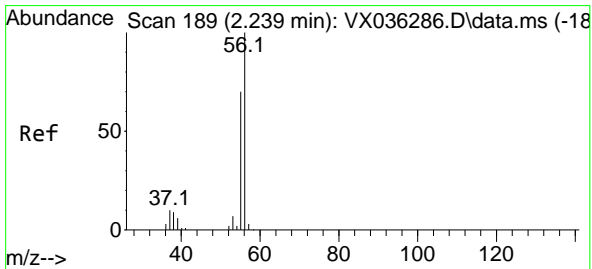
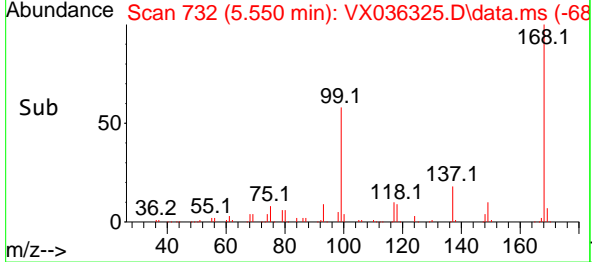
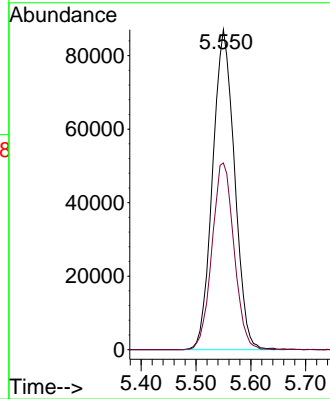
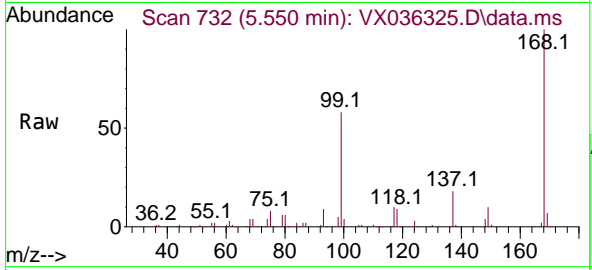




#1
 Pentafluorobenzene
 Concen: 50.000 ug/l
 RT: 5.550 min Scan# 71
 Delta R.T. 0.001 min
 Lab File: VX036325.D
 Acq: 26 Jun 2023 12:36

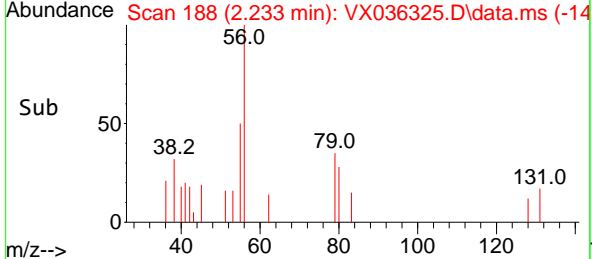
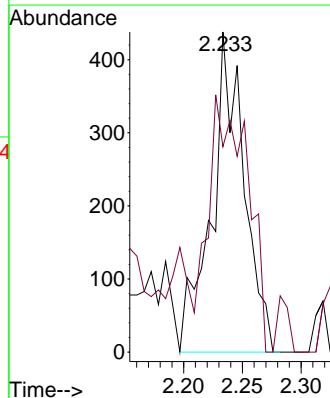
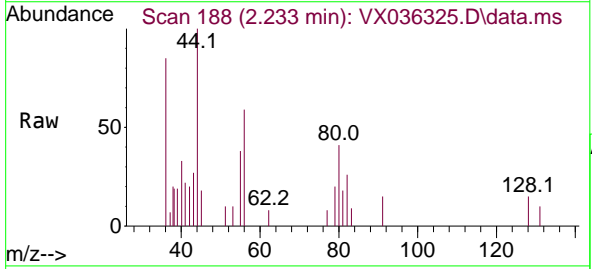
Instrument : MSVOA_X
 Client Sample Id : VX0626WBL01

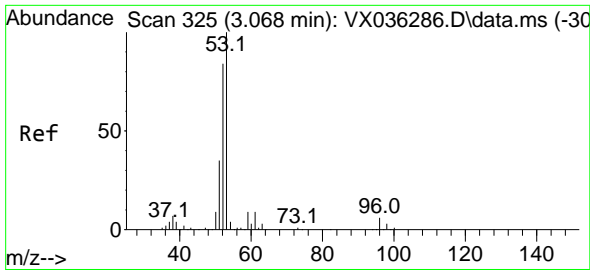
Tgt Ion:168 Resp: 241652
 Ion Ratio Lower Upper
 168 100
 99 58.3 56.6 85.0



#13
 Acrolein
 Concen: 0.971 ug/l
 RT: 2.233 min Scan# 188
 Delta R.T. -0.006 min
 Lab File: VX036325.D
 Acq: 26 Jun 2023 12:36

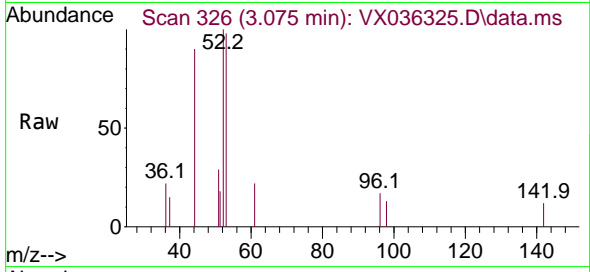
Tgt Ion: 56 Resp: 841
 Ion Ratio Lower Upper
 56 100
 55 96.1 57.1 85.7#





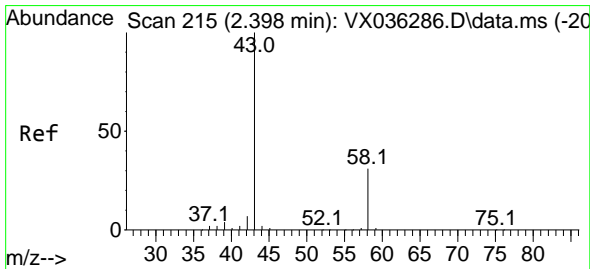
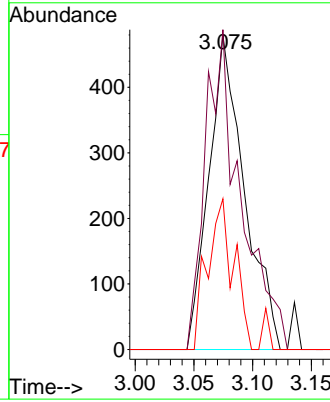
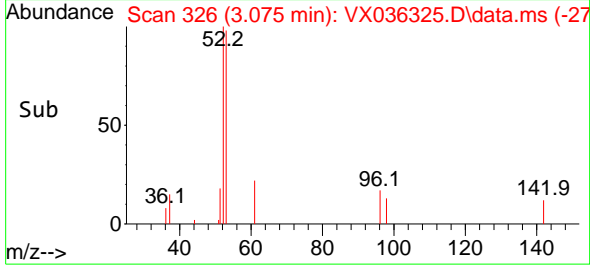
#15
 Acrylonitrile
 Concen: 0.632 ug/l
 RT: 3.075 min Scan# 31
 Delta R.T. 0.001 min
 Lab File: VX036325.D
 Acq: 26 Jun 2023 12:36

Instrument :
 MSVOA_X
 ClientSampleId :
 VX0626WBL01

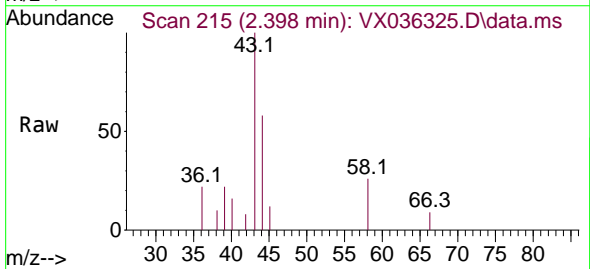


Tgt Ion: 53 Resp: 1010

Ion	Ratio	Lower	Upper
53	100		
52	101.7	66.0	99.0#
51	35.6	29.8	44.6

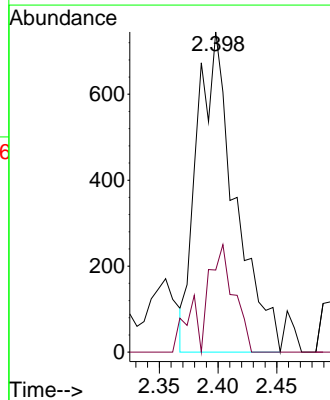
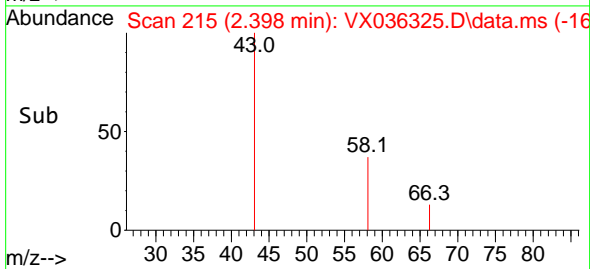


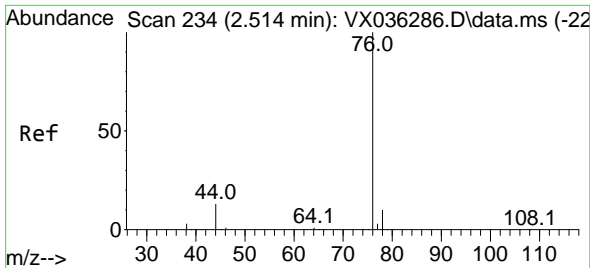
#16
 Acetone
 Concen: 1.137 ug/l
 RT: 2.398 min Scan# 215
 Delta R.T. -0.006 min
 Lab File: VX036325.D
 Acq: 26 Jun 2023 12:36



Tgt Ion: 43 Resp: 1684

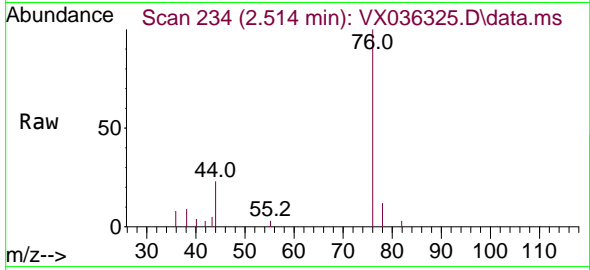
Ion	Ratio	Lower	Upper
43	100		
58	25.6	21.9	32.9



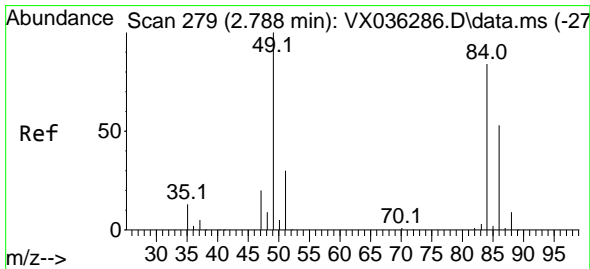
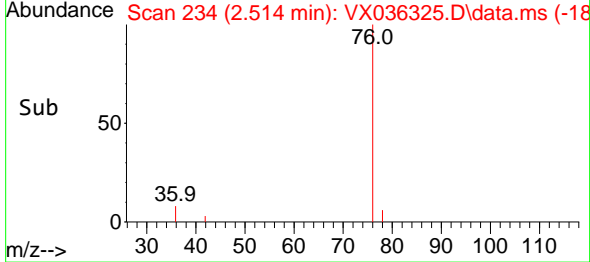
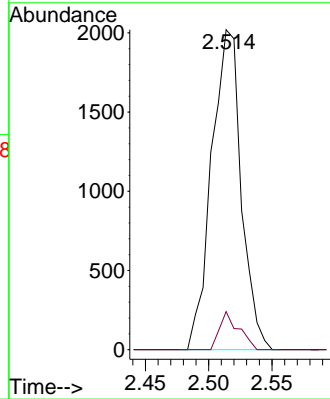


#17
 Carbon Disulfide
 Concen: 0.488 ug/l
 RT: 2.514 min Scan# 21
 Delta R.T. 0.001 min
 Lab File: VX036325.D
 Acq: 26 Jun 2023 12:36

Instrument :
 MSVOA_X
 ClientSampleId :
 VX0626WBL01

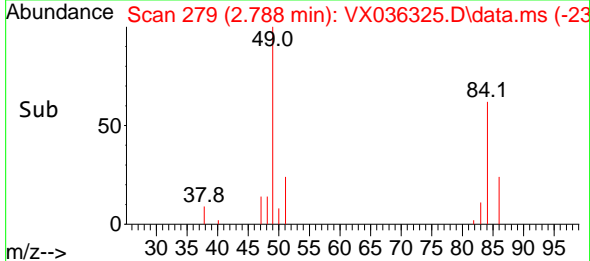
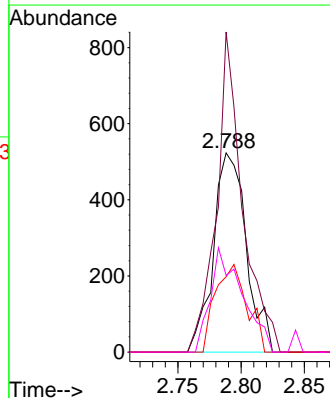
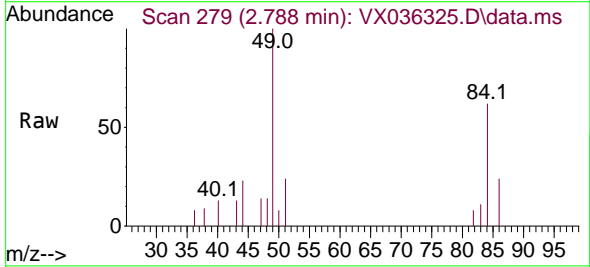


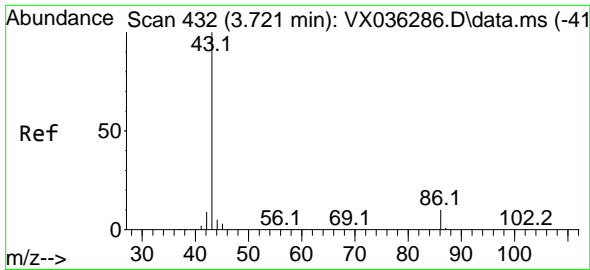
Tgt Ion: 76 Resp: 3293
 Ion Ratio Lower Upper
 76 100
 78 11.9 7.0 10.6#



#20
 Methylene Chloride
 Concen: 0.298 ug/l
 RT: 2.788 min Scan# 279
 Delta R.T. 0.000 min
 Lab File: VX036325.D
 Acq: 26 Jun 2023 12:36

Tgt Ion: 84 Resp: 949
 Ion Ratio Lower Upper
 84 100
 49 160.8 103.6 155.4#
 51 37.9 33.8 50.6
 86 38.4 49.4 74.0#

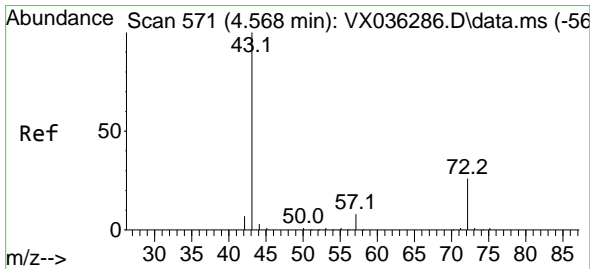
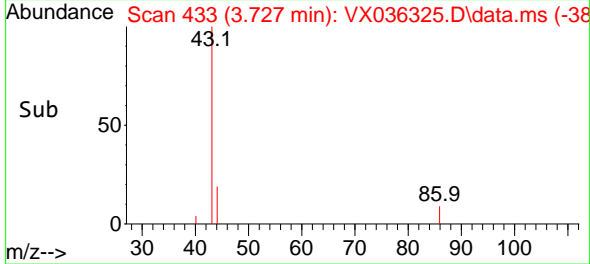
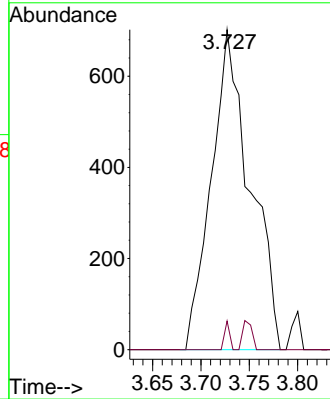
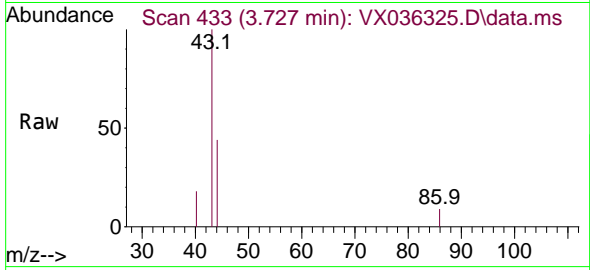




#23
 Vinyl Acetate
 Concen: 0.301 ug/l
 RT: 3.727 min Scan# 41
 Delta R.T. 0.006 min
 Lab File: VX036325.D
 Acq: 26 Jun 2023 12:36

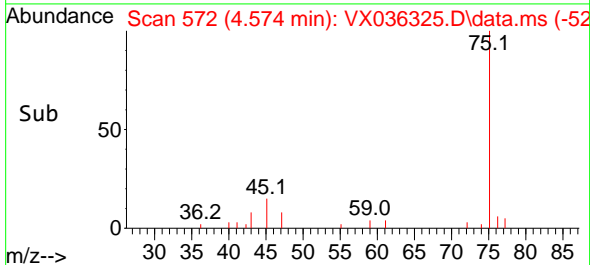
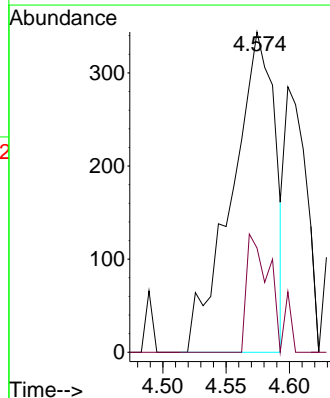
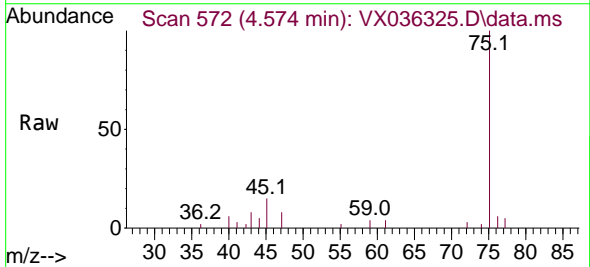
Instrument :
 MSVOA_X
 ClientSampleId :
 VX0626WBL01

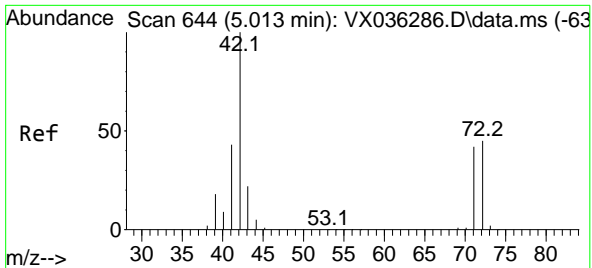
Tgt Ion: 43 Resp: 1953
 Ion Ratio Lower Upper
 43 100
 86 9.0 7.8 11.8



#25
 2-Butanone
 Concen: 0.385 ug/l
 RT: 4.574 min Scan# 572
 Delta R.T. 0.006 min
 Lab File: VX036325.D
 Acq: 26 Jun 2023 12:36

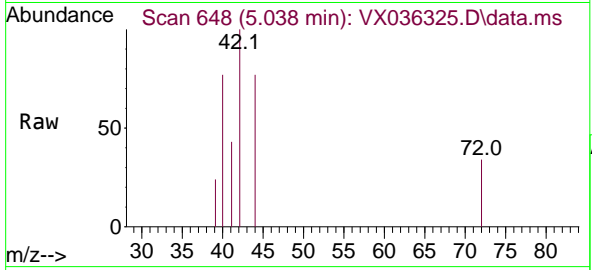
Tgt Ion: 43 Resp: 819
 Ion Ratio Lower Upper
 43 100
 72 32.6 19.4 29.2#





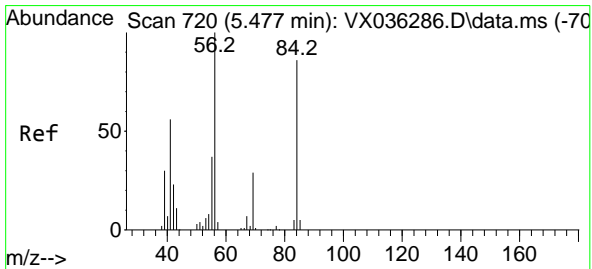
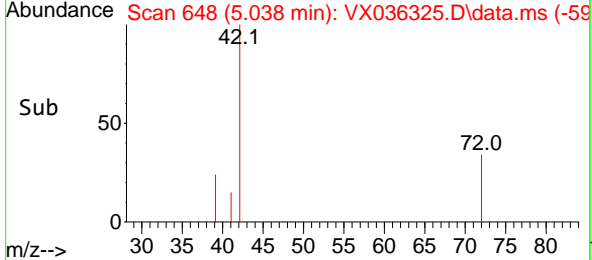
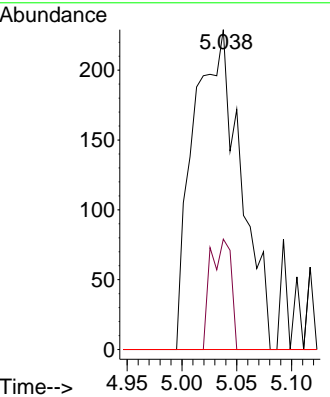
#29
 Tetrahydrofuran
 Concen: 0.507 ug/l
 RT: 5.038 min Scan# 644
 Delta R.T. 0.019 min
 Lab File: VX036325.D
 Acq: 26 Jun 2023 12:36

Instrument : MSVOA_X
 ClientSampleId : VX0626WBL01

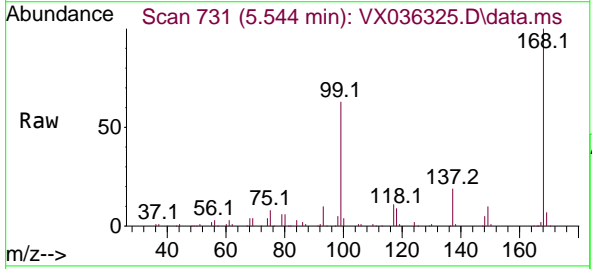


Tgt Ion: 42 Resp: 686

Ion	Ratio	Lower	Upper
42	100		
72	14.9	34.2	51.4#
71	0.0	32.2	48.2#

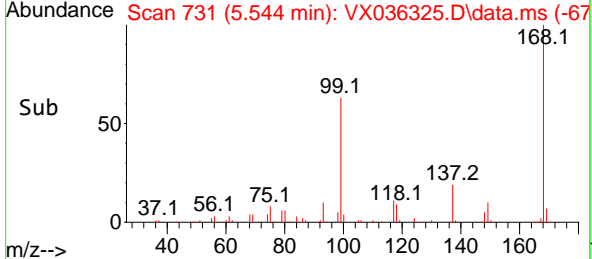
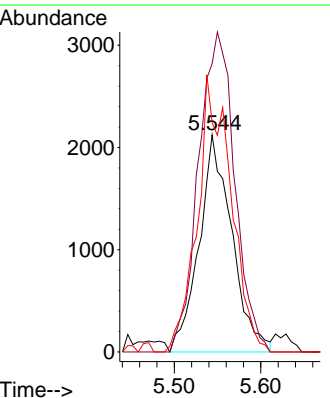


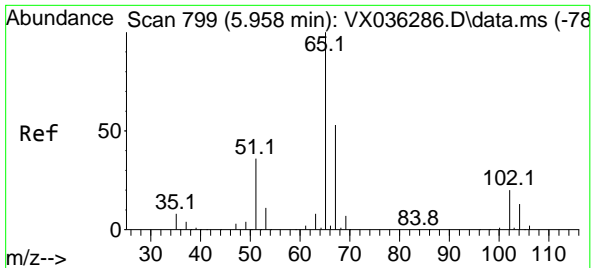
#31
 Cyclohexane
 Concen: 1.257 ug/l
 RT: 5.544 min Scan# 731
 Delta R.T. 0.074 min
 Lab File: VX036325.D
 Acq: 26 Jun 2023 12:36



Tgt Ion: 56 Resp: 5580

Ion	Ratio	Lower	Upper
56	100		
69	132.9	23.4	35.2#
84	105.8	65.9	98.9#

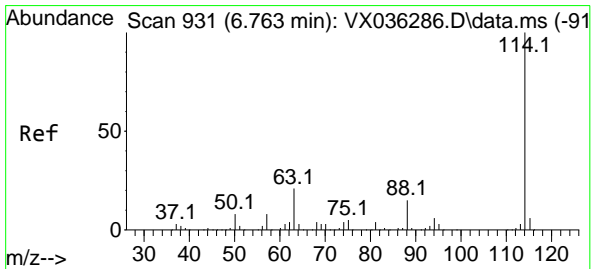
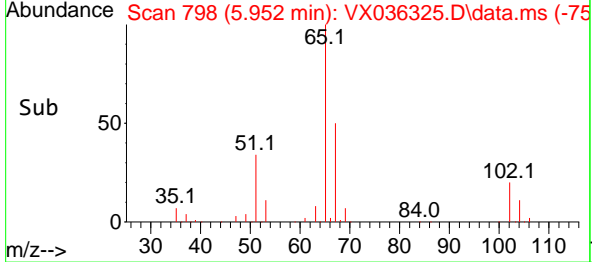
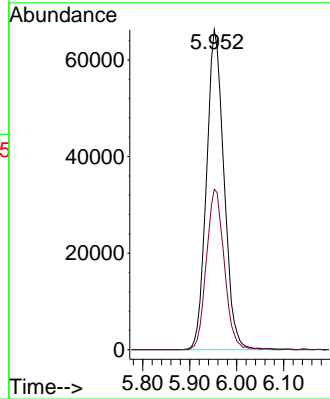
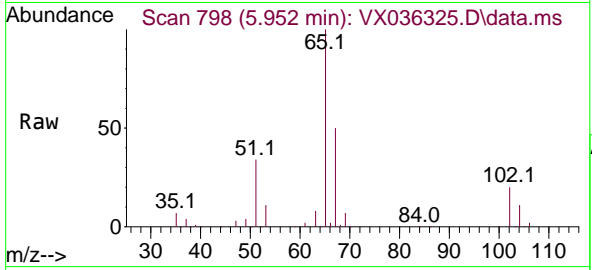




#33
 1,2-Dichloroethane-d4
 Concen: 49.583 ug/l
 RT: 5.952 min Scan# 798
 Delta R.T. -0.006 min
 Lab File: VX036325.D
 Acq: 26 Jun 2023 12:36

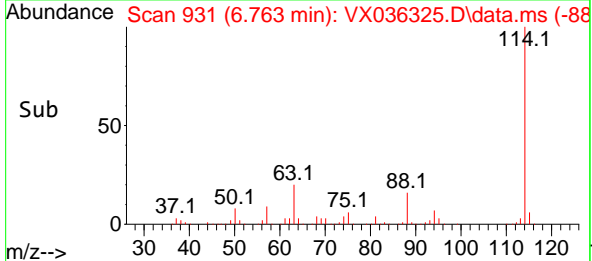
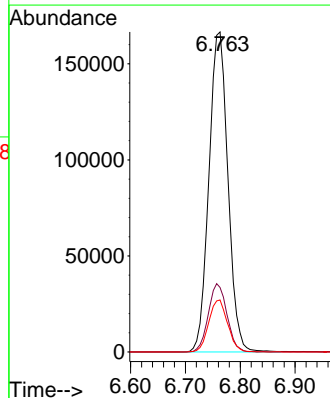
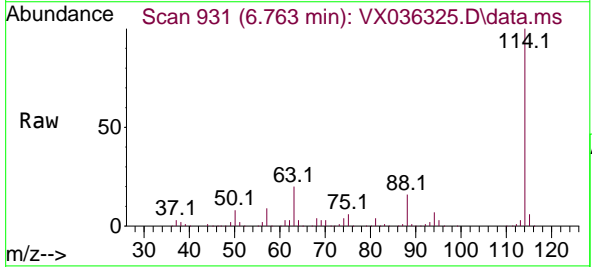
Instrument : MSVOA_X
 ClientSampleId : VX0626WBL01

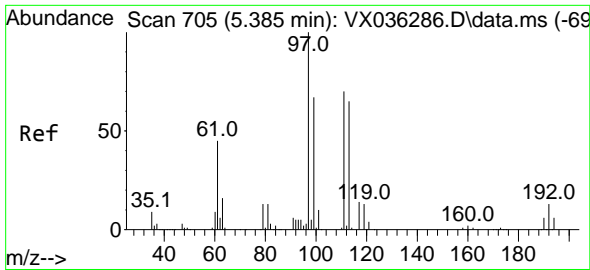
Tgt Ion: 65 Resp: 171750
 Ion Ratio Lower Upper
 65 100
 67 50.9 0.0 100.2



#34
 1,4-Difluorobenzene
 Concen: 50.000 ug/l
 RT: 6.763 min Scan# 931
 Delta R.T. 0.000 min
 Lab File: VX036325.D
 Acq: 26 Jun 2023 12:36

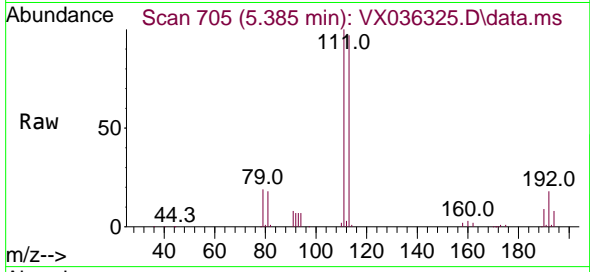
Tgt Ion:114 Resp: 400679
 Ion Ratio Lower Upper
 114 100
 63 20.1 0.0 45.0
 88 16.3 0.0 36.6





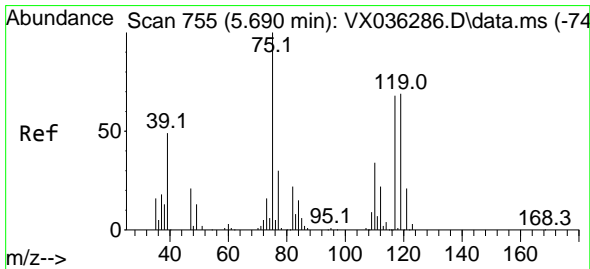
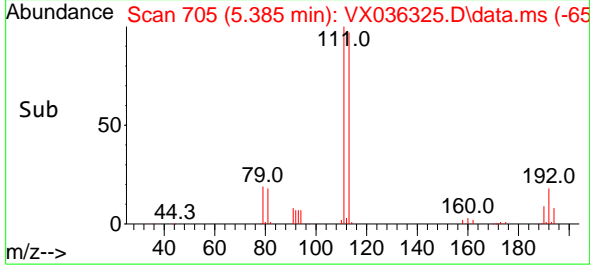
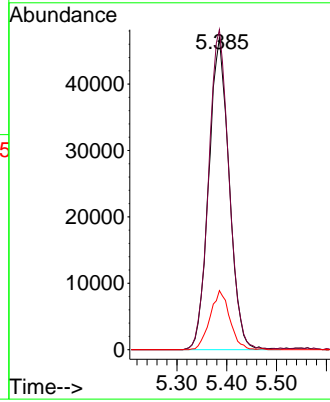
#35
 Dibromofluoromethane
 Concen: 50.522 ug/l
 RT: 5.385 min Scan# 705
 Delta R.T. 0.000 min
 Lab File: VX036325.D
 Acq: 26 Jun 2023 12:36

Instrument : MSVOA_X
 ClientSampleId : VX0626WBL01



Tgt Ion: 113 Resp: 133478

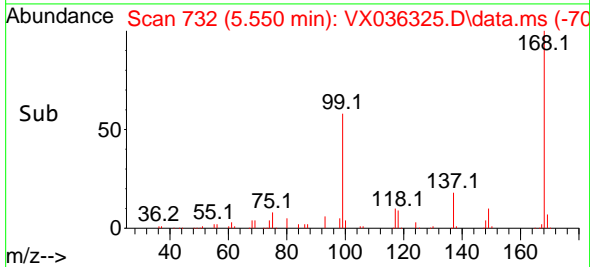
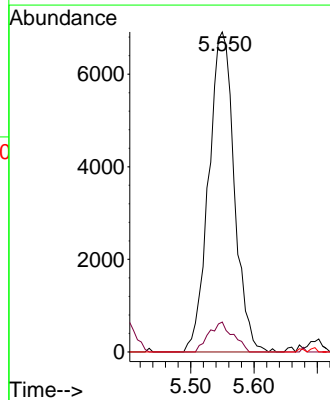
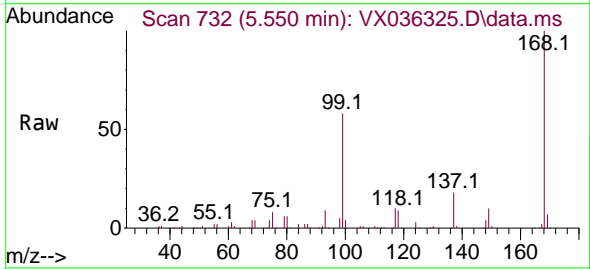
Ion	Ratio	Lower	Upper
113	100		
111	102.6	82.9	124.3
192	18.2	13.3	19.9

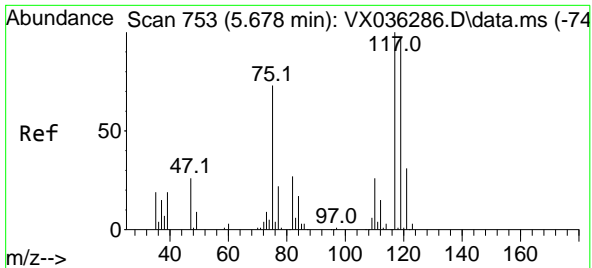


#36
 1,1-Dichloropropene
 Concen: 4.930 ug/l
 RT: 5.550 min Scan# 732
 Delta R.T. -0.146 min
 Lab File: VX036325.D
 Acq: 26 Jun 2023 12:36

Tgt Ion: 75 Resp: 19416

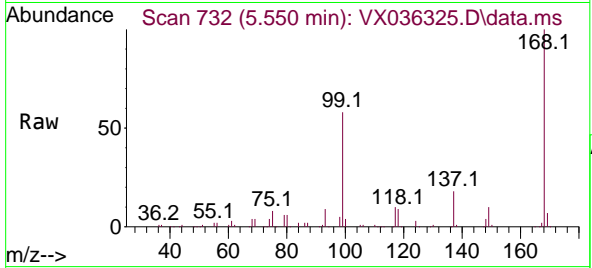
Ion	Ratio	Lower	Upper
75	100		
110	8.8	17.0	50.9#
77	0.0	24.7	37.1#



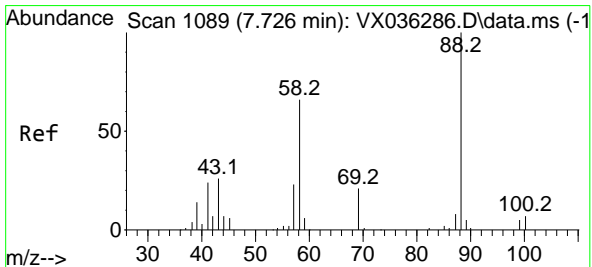
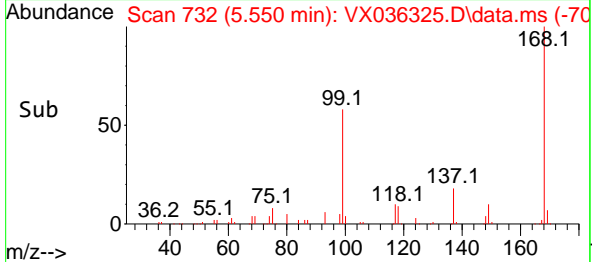
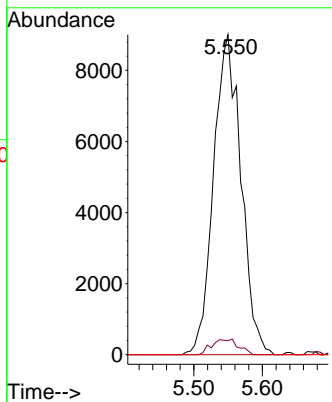


#38
 Carbon Tetrachloride
 Concen: 6.947 ug/l
 RT: 5.550 min Scan# 71
 Delta R.T. -0.128 min
 Lab File: VX036325.D
 Acq: 26 Jun 2023 12:36

Instrument :
 MSVOA_X
 ClientSampleId :
 VX0626WBL01

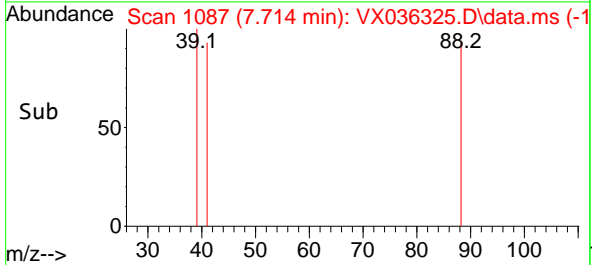
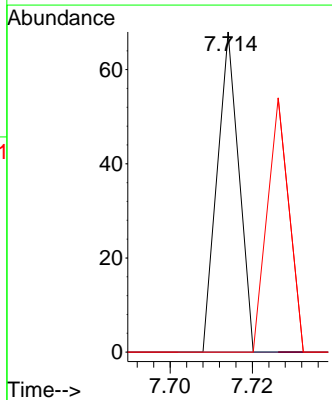
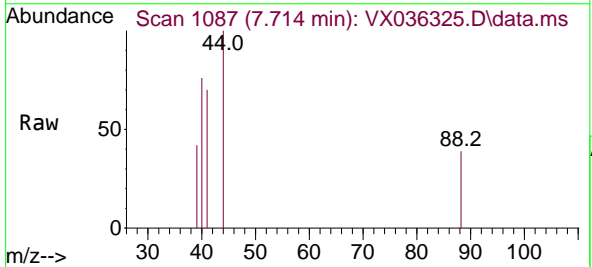


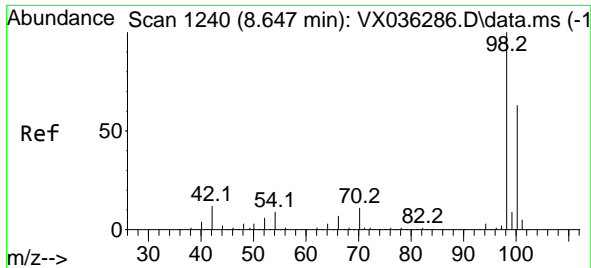
Tgt Ion:117 Resp: 24989
 Ion Ratio Lower Upper
 117 100
 119 4.3 78.2 117.2#
 121 0.0 24.4 36.6#



#49
 1,4-Dioxane
 Concen: 0.353 ug/l
 RT: 7.714 min Scan# 1087
 Delta R.T. -0.018 min
 Lab File: VX036325.D
 Acq: 26 Jun 2023 12:36

Tgt Ion: 88 Resp: 25
 Ion Ratio Lower Upper
 88 100
 43 0.0 0.0 0.0
 58 80.0 60.1 90.1





#50
 Toluene-d8
 Concen: 50.902 ug/l
 RT: 8.647 min Scan# 11
 Delta R.T. 0.001 min
 Lab File: VX036325.D
 Acq: 26 Jun 2023 12:36

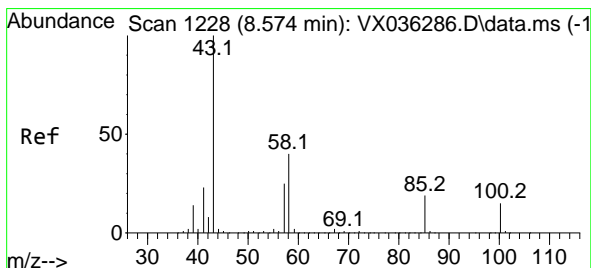
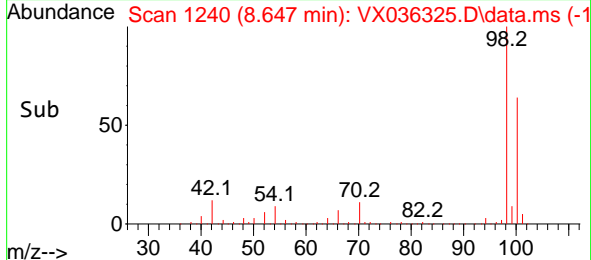
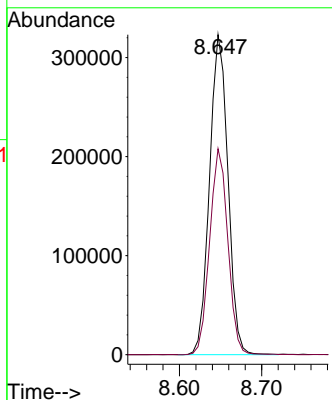
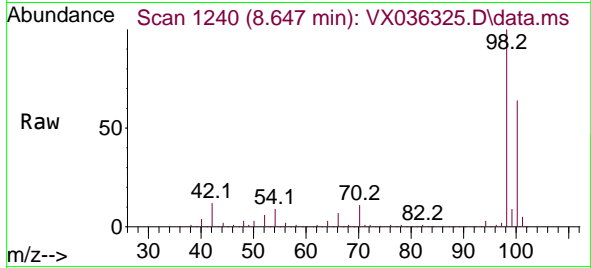
Instrument :

MSVOA_X

ClientSampleId :

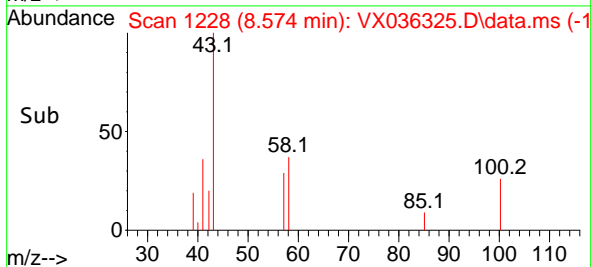
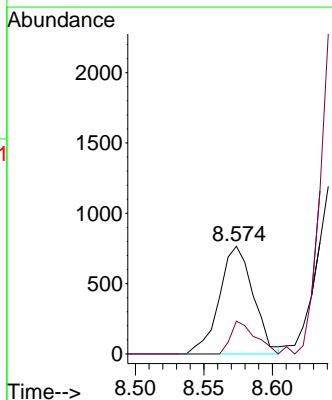
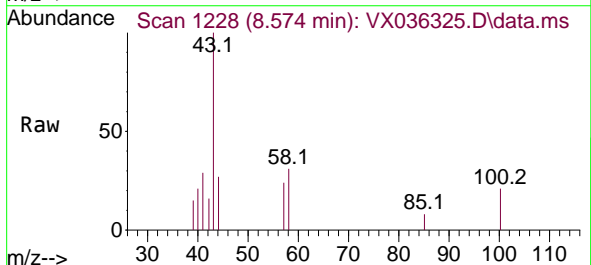
VX0626WBL01

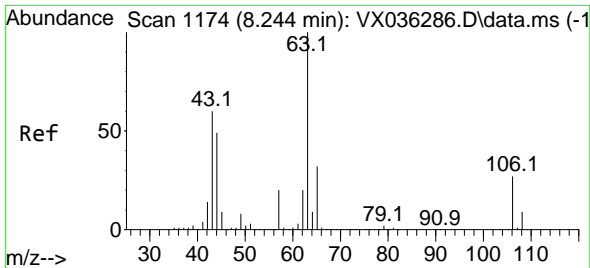
Tgt Ion: 98 Resp: 502288
 Ion Ratio Lower Upper
 98 100
 100 63.7 53.1 79.7



#51
 4-Methyl-2-Pentanone
 Concen: 0.320 ug/l
 RT: 8.574 min Scan# 1228
 Delta R.T. 0.001 min
 Lab File: VX036325.D
 Acq: 26 Jun 2023 12:36

Tgt Ion: 43 Resp: 1321
 Ion Ratio Lower Upper
 43 100
 58 22.2 30.4 45.6#

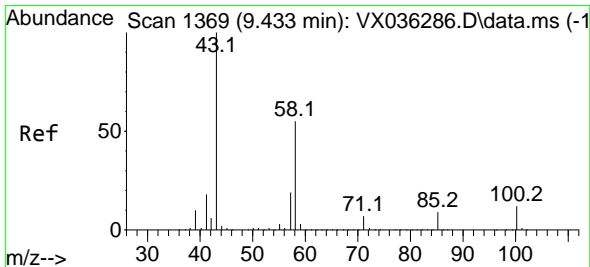
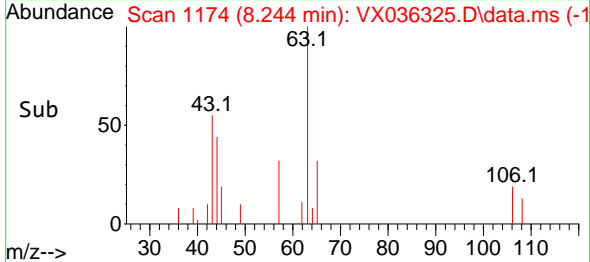
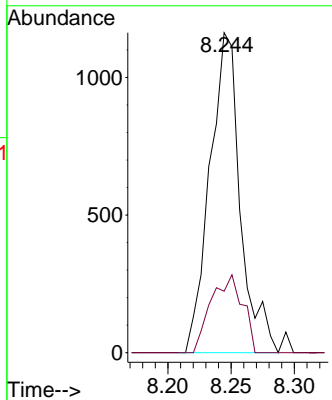
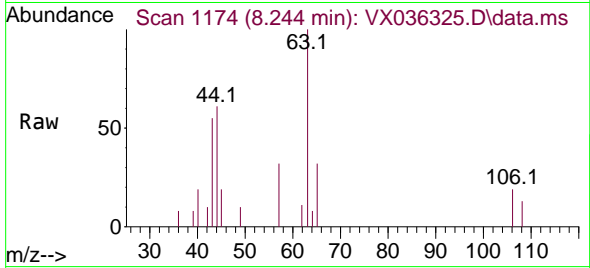




#58
 2-Chloroethyl Vinyl ether
 Concen: 0.799 ug/l
 RT: 8.244 min Scan# 1174
 Delta R.T. 0.000 min
 Lab File: VX036325.D
 Acq: 26 Jun 2023 12:36

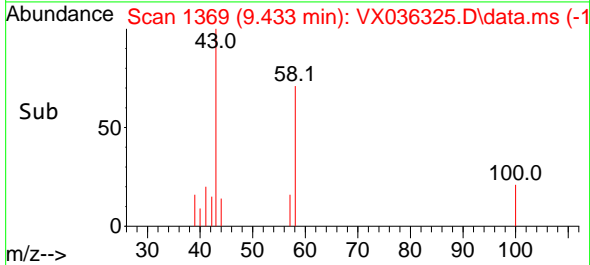
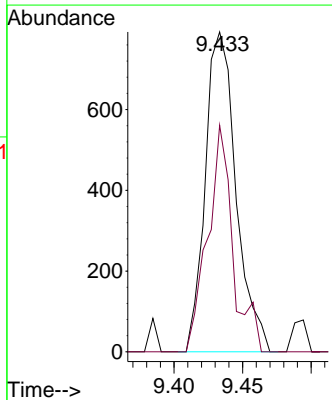
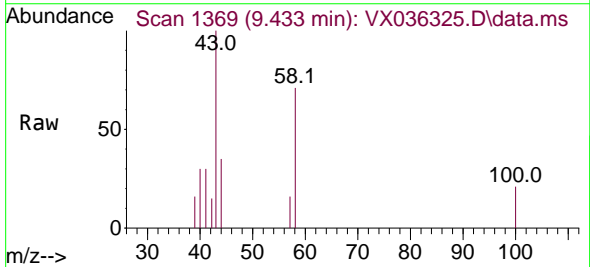
Instrument : MSVOA_X
 ClientSampleId : VX0626WBL01

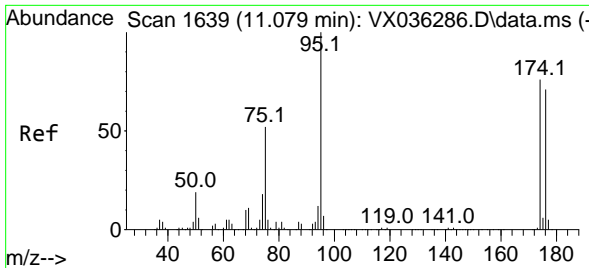
Tgt Ion: 63 Resp: 1947
 Ion Ratio Lower Upper
 63 100
 106 25.2 22.5 33.7



#59
 2-Hexanone
 Concen: 0.410 ug/l
 RT: 9.433 min Scan# 1369
 Delta R.T. 0.000 min
 Lab File: VX036325.D
 Acq: 26 Jun 2023 12:36

Tgt Ion: 43 Resp: 1236
 Ion Ratio Lower Upper
 43 100
 58 57.8 26.2 78.5

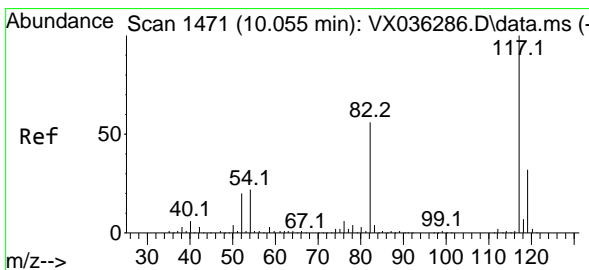
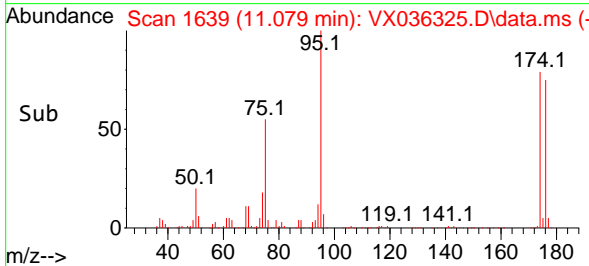
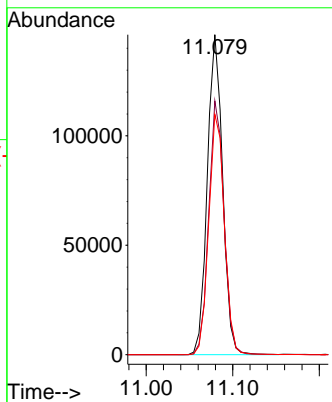
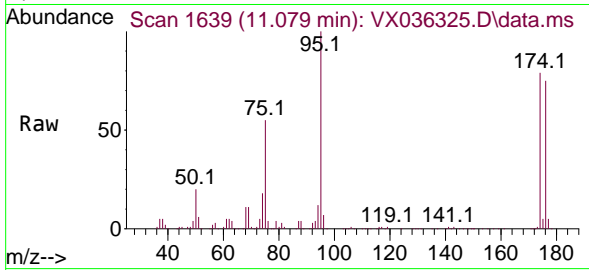




#62
 4-Bromofluorobenzene
 Concen: 51.600 ug/l
 RT: 11.079 min Scan# 1
 Delta R.T. 0.000 min
 Lab File: VX036325.D
 Acq: 26 Jun 2023 12:36

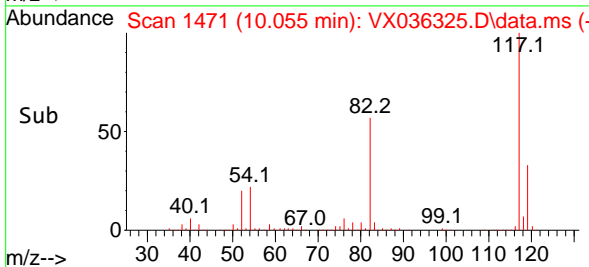
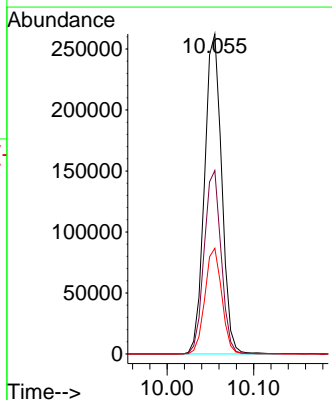
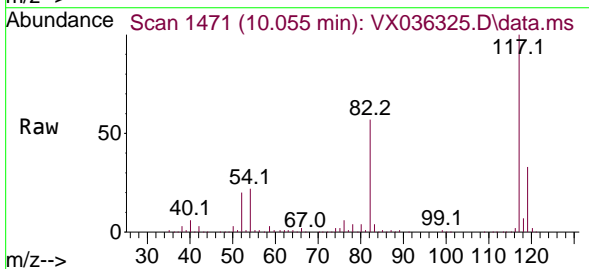
Instrument :
 MSVOA_X
 ClientSampleId :
 VX0626WBL01

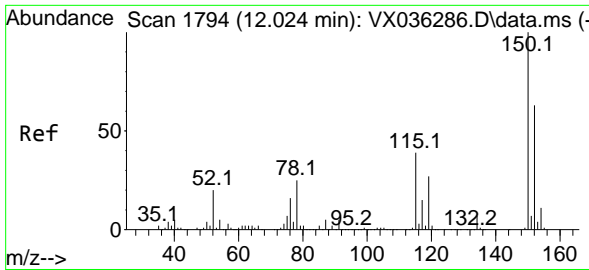
Tgt Ion: 95 Resp: 179348
 Ion Ratio Lower Upper
 95 100
 174 79.3 0.0 135.6
 176 76.7 0.0 131.0



#63
 Chlorobenzene-d5
 Concen: 50.000 ug/l
 RT: 10.055 min Scan# 1471
 Delta R.T. 0.000 min
 Lab File: VX036325.D
 Acq: 26 Jun 2023 12:36

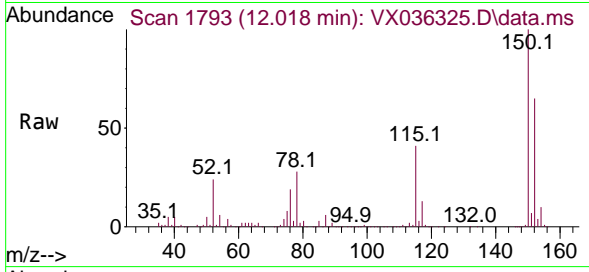
Tgt Ion: 117 Resp: 361315
 Ion Ratio Lower Upper
 117 100
 82 57.3 46.2 69.4
 119 33.1 25.5 38.3



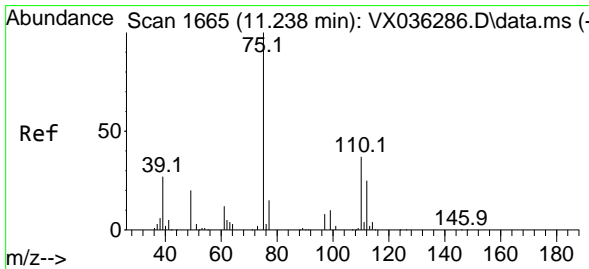
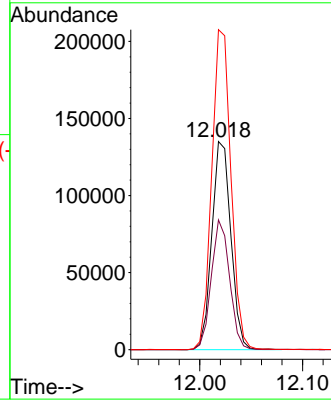
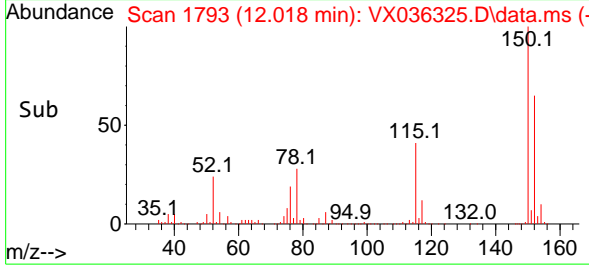


#72
 1,4-Dichlorobenzene-d4
 Concen: 50.000 ug/l
 RT: 12.018 min Scan# 11
 Delta R.T. -0.006 min
 Lab File: VX036325.D
 Acq: 26 Jun 2023 12:36

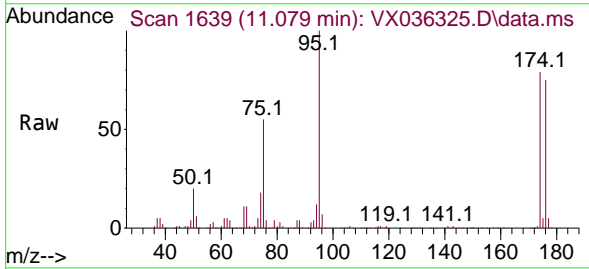
Instrument : MSVOA_X
 ClientSampleId : VX0626WBL01



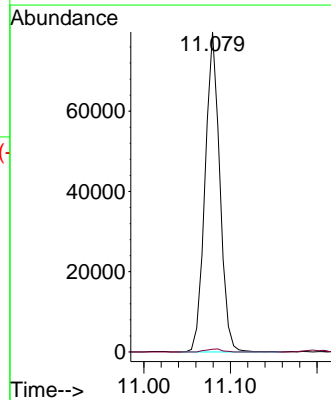
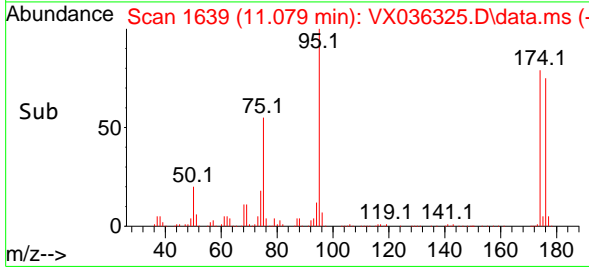
Tgt Ion:152 Resp: 173704
 Ion Ratio Lower Upper
 152 100
 115 59.8 43.3 129.9
 150 155.2 0.0 345.0

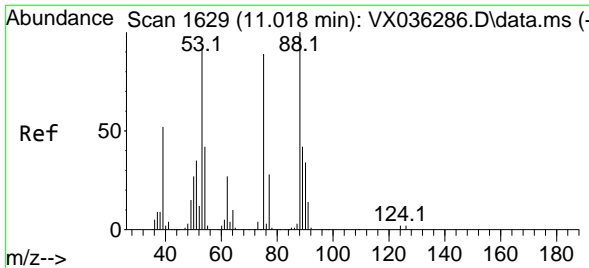


#76
 1,2,3-Trichloropropane
 Concen: 25.376 ug/l
 RT: 11.079 min Scan# 1639
 Delta R.T. -0.159 min
 Lab File: VX036325.D
 Acq: 26 Jun 2023 12:36



Tgt Ion: 75 Resp: 94022
 Ion Ratio Lower Upper
 75 100
 77 1.0 19.1 57.5#

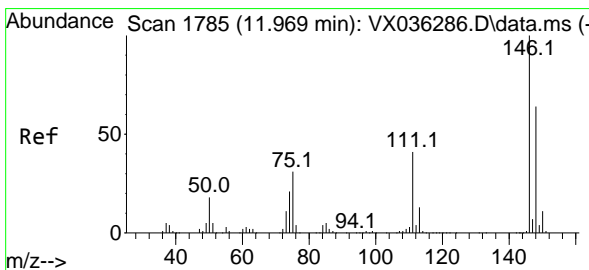
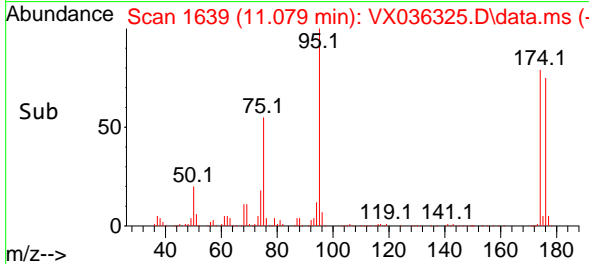
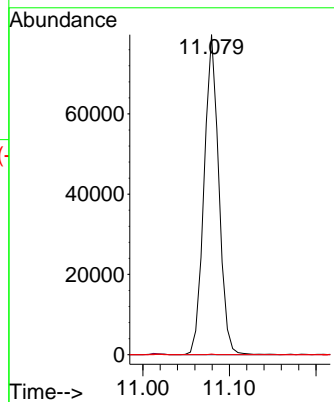
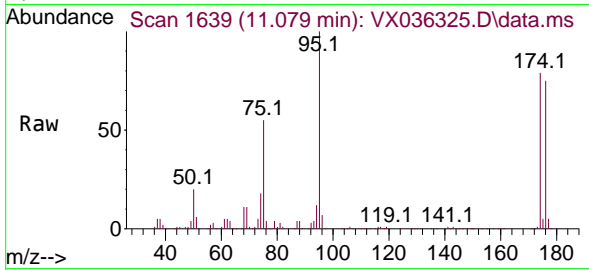




#81
 trans-1,4-Dichloro-2-butene
 Concen: 82.719 ug/l
 RT: 11.079 min Scan# 1
 Delta R.T. 0.061 min
 Lab File: VX036325.D
 Acq: 26 Jun 2023 12:36

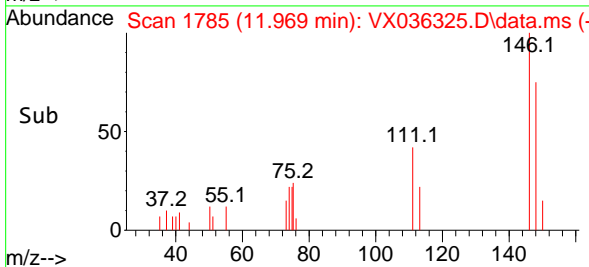
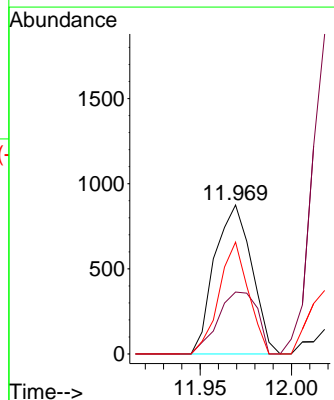
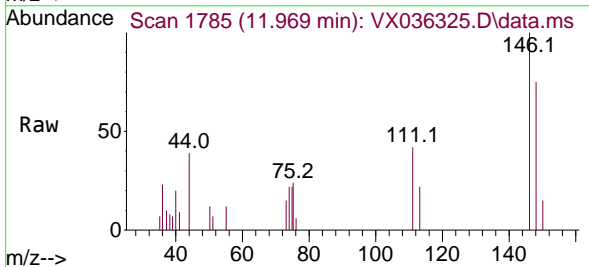
Instrument :
 MSVOA_X
 ClientSampleId :
 VX0626WBL01

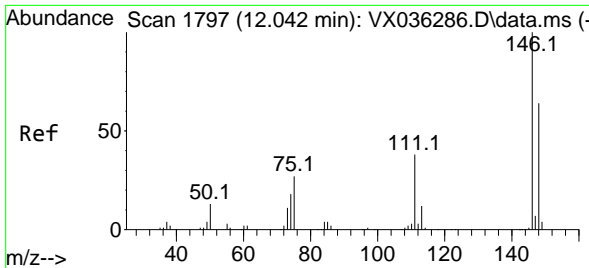
Tgt Ion: 75 Resp: 94022
 Ion Ratio Lower Upper
 75 100
 53 0.0 90.5 135.7#
 89 0.1 36.9 55.3#



#87
 1,3-Dichlorobenzene
 Concen: 0.210 ug/l
 RT: 11.969 min Scan# 1785
 Delta R.T. 0.000 min
 Lab File: VX036325.D
 Acq: 26 Jun 2023 12:36

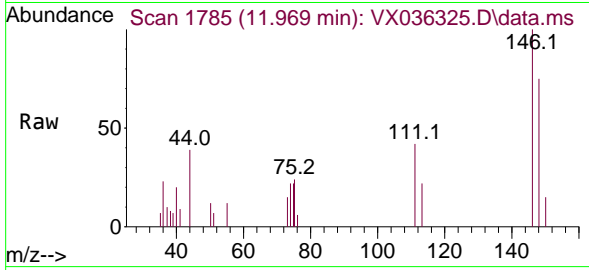
Tgt Ion:146 Resp: 1240
 Ion Ratio Lower Upper
 146 100
 111 44.0 22.1 66.1
 148 59.4 31.8 95.3



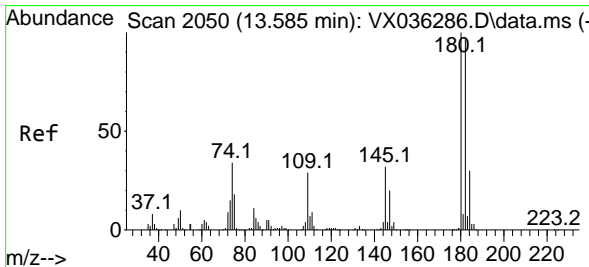
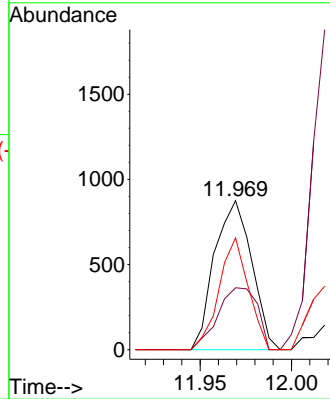
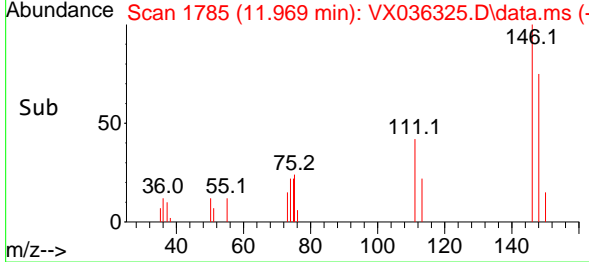


#88
 1,4-Dichlorobenzene
 Concen: 0.206 ug/l
 RT: 11.969 min Scan# 11
 Delta R.T. -0.073 min
 Lab File: VX036325.D
 Acq: 26 Jun 2023 12:36

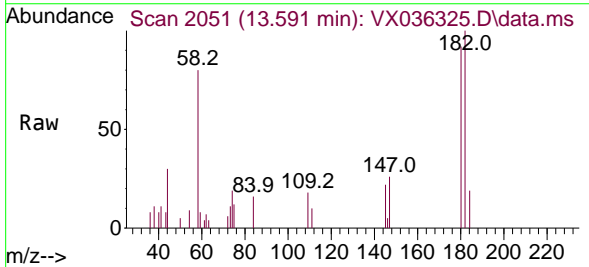
Instrument : MSVOA_X
 ClientSampleId : VX0626WBL01



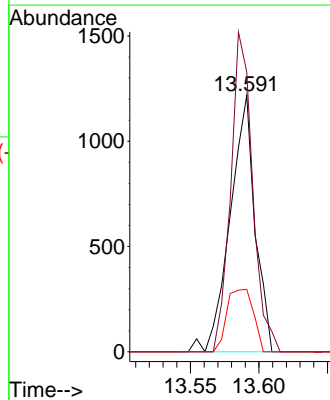
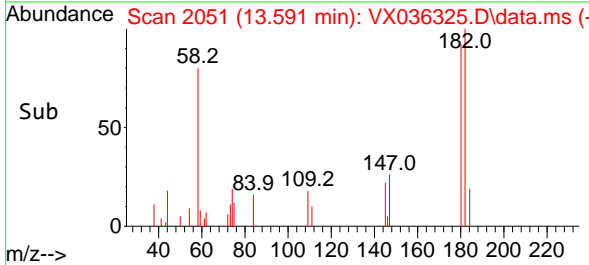
Tgt Ion:146 Resp: 1240
 Ion Ratio Lower Upper
 146 100
 111 44.0 21.3 63.7
 148 59.4 31.8 95.4

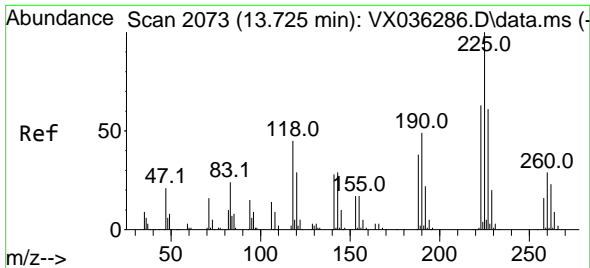


#93
 1,2,4-Trichlorobenzene
 Concen: 0.429 ug/l
 RT: 13.591 min Scan# 2051
 Delta R.T. 0.006 min
 Lab File: VX036325.D
 Acq: 26 Jun 2023 12:36



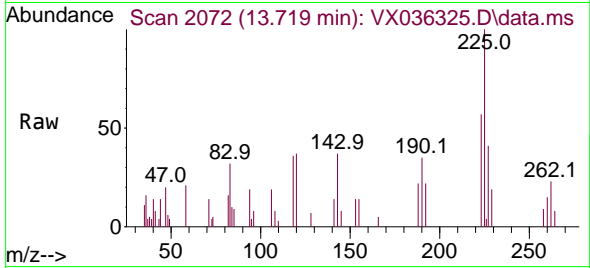
Tgt Ion:180 Resp: 1539
 Ion Ratio Lower Upper
 180 100
 182 110.0 48.3 144.8
 145 25.9 18.0 54.0





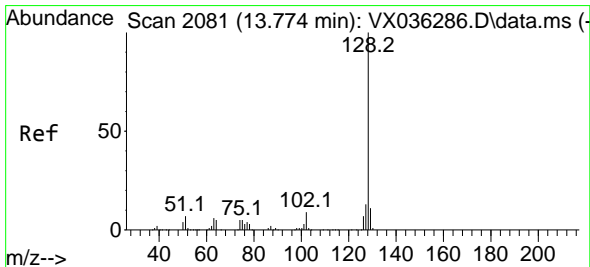
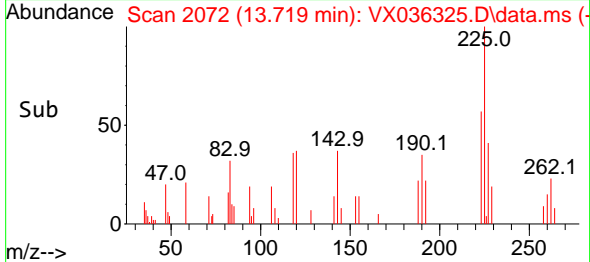
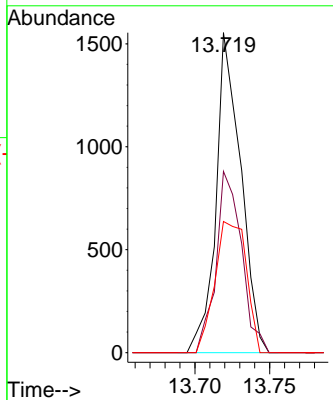
#94
 Hexachlorobutadiene
 Concen: 1.220 ug/l
 RT: 13.719 min Scan# 2072
 Delta R.T. -0.006 min
 Lab File: VX036325.D
 Acq: 26 Jun 2023 12:36

Instrument : MSVOA_X
 ClientSampleId : VX0626WBL01



Tgt Ion: 225 Resp: 1793

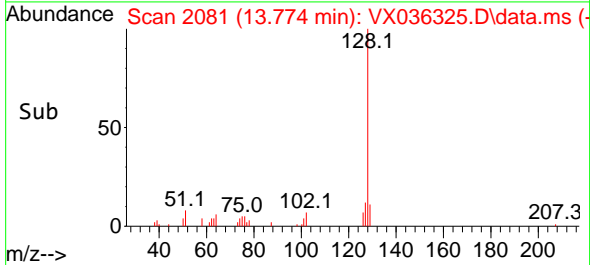
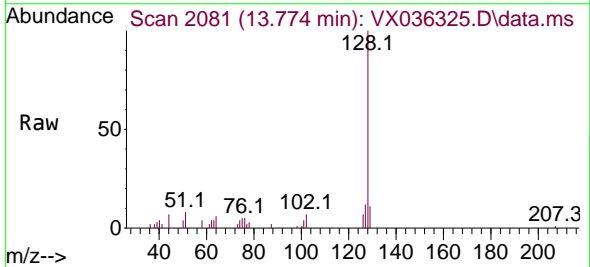
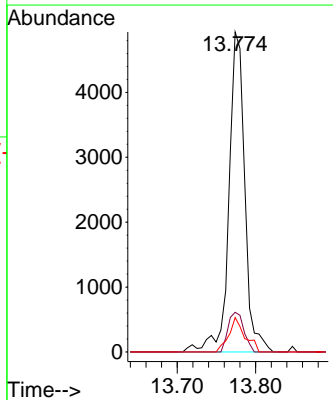
Ion	Ratio	Lower	Upper
225	100		
223	58.1	31.1	93.2
227	51.9	32.5	97.5

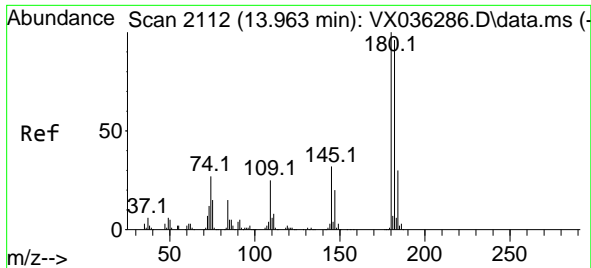


#95
 Naphthalene
 Concen: 0.585 ug/l
 RT: 13.774 min Scan# 2081
 Delta R.T. -0.000 min
 Lab File: VX036325.D
 Acq: 26 Jun 2023 12:36

Tgt Ion: 128 Resp: 6941

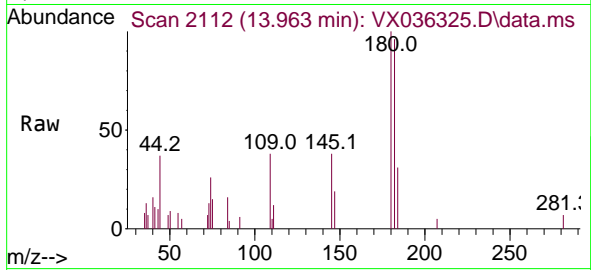
Ion	Ratio	Lower	Upper
128	100		
127	12.3	10.3	15.5
129	10.8	8.8	13.2





#96
 1,2,3-Trichlorobenzene
 Concen: 0.467 ug/l
 RT: 13.963 min Scan# 21
 Delta R.T. -0.000 min
 Lab File: VX036325.D
 Acq: 26 Jun 2023 12:36

Instrument :
 MSVOA_X
 ClientSampleId :
 VX0626W/BL01



Tgt Ion:180 Resp: 1635

Ion	Ratio	Lower	Upper
180	100		
182	98.3	46.9	140.6
145	37.2	17.8	53.5

