

Data Path : Z:\voasrv\HPCHEM1\MSVOA\_X\Data\VX062623\  
 Data File : VX036340.D  
 Acq On : 26 Jun 2023 19:37  
 Operator : JC/MD  
 Sample : VSTDCCC050  
 Misc : 5.0mL/MSVOA\_X/WATER  
 ALS Vial : 18 Sample Multiplier: 1

Instrument :  
 MSVOA\_X  
 ClientSampleId :

Quant Time: Jun 27 04:28:43 2023  
 Quant Method : Z:\voasrv\HPCHEM1\MSVOA\_X\Method\82X062323W.M  
 Quant Title : SW846 8260  
 QLast Update : Fri Jun 23 15:03:28 2023  
 Response via : Initial Calibration

Compound	R.T.	QIon	Response	Conc	Units	Dev(Min)
Internal Standards						
1) Pentafluorobenzene	5.562	168	372	50.000	ug/l	# 0.01
34) 1,4-Difluorobenzene	6.775	114	497	50.000	ug/l	0.01
63) Chlorobenzene-d5	10.061	117	428	50.000	ug/l	# 0.00
72) 1,4-Dichlorobenzene-d4	12.024	152	401	50.000	ug/l	# 0.00
System Monitoring Compounds						
33) 1,2-Dichloroethane-d4	5.946	65	243	45.571	ug/l	-0.01
Spiked Amount	50.000	Range 78 - 117	Recovery	=	91.140%	
35) Dibromofluoromethane	5.391	113	91	27.769	ug/l	0.00
Spiked Amount	50.000	Range 75 - 124	Recovery	=	55.540%#	
50) Toluene-d8	8.653	98	447	36.520	ug/l	0.00
Spiked Amount	50.000	Range 92 - 112	Recovery	=	73.040%#	
62) 4-Bromofluorobenzene	11.079	95	182	42.215	ug/l	0.00
Spiked Amount	50.000	Range 83 - 123	Recovery	=	84.420%	
Target Compounds						
						Qvalue
3) Chloromethane	1.294	50	285	46.649	ug/l	# 43
5) Bromomethane	1.623	94	294	60.156	ug/l	# 73
6) Chloroethane	1.690	64	97	19.782	ug/l	# 43
8) Diethyl Ether	1.965	74	99	25.255	ug/l	# 1
10) Methyl Iodide	2.446	142	188	36.406	ug/l	# 41
12) 1,1-Dichloroethene	2.038	96	54	12.773	ug/l	# 1
13) Acrolein	2.257	56	19	14.253	ug/l	# 1
14) Allyl chloride	2.648	41	73	10.625	ug/l	# 24
16) Acetone	2.404	43	213	93.454	ug/l	# 47
17) Carbon Disulfide	2.379	76	24	2.311	ug/l	# 76
18) Methyl Acetate	2.715	43	311	33.182	ug/l	# 53
23) Vinyl Acetate	3.800	43	46	4.604	ug/l	# 73
25) 2-Butanone	4.659	43	53	16.184	ug/l	# 51
29) Tetrahydrofuran	4.946	42	19	9.113	ug/l	# 34
31) Cyclohexane	5.220	56	42	6.146	ug/l	# 18
37) Ethyl Acetate	4.659	43	53	10.645	ug/l	# 69
40) Benzene	6.043	78	49	3.591	ug/l	# 51
41) Methacrylonitrile	4.909	41	23	8.327	ug/l	# 25
43) Isopropyl Acetate	6.452	43	24	3.022	ug/l	# 62
48) Methyl methacrylate	7.763	41	43	10.858	ug/l	# 16
51) 4-Methyl-2-Pentanone	8.500	43	26	5.081	ug/l	# 37
59) 2-Hexanone	9.439	43	70	18.733	ug/l	# 26
67) Ethyl Benzene	10.201	91	21	1.313	ug/l	# 44
68) m/p-Xylenes	10.299	106	53	8.529	ug/l	# 1
70) Styrene	10.658	104	61	6.208	ug/l	# 50
74) N-amyl acetate	10.817	43	30	2.510	ug/l	# 44
76) 1,2,3-Trichloropropane	11.317	75	20	2.338	ug/l	# 37
78) n-propylbenzene	11.311	91	148	4.194	ug/l	# 53
79) 2-Chlorotoluene	11.311	91	148	7.049	ug/l	# 42
82) 4-Chlorotoluene	11.457	91	170	6.955	ug/l	# 46
84) 1,2,4-Trimethylbenzene	11.756	105	60	2.370	ug/l	# 91
85) sec-Butylbenzene	11.756	105	60	1.931	ug/l	# 57
87) 1,3-Dichlorobenzene	11.951	146	22	1.610	ug/l	# 24
88) 1,4-Dichlorobenzene	11.951	146	22	1.581	ug/l	# 24
89) n-Butylbenzene	12.335	91	94	4.050	ug/l	# 32
91) 1,2-Dichlorobenzene	12.329	146	45	3.345	ug/l	# 24

Data Path : Z:\voasrv\HPCHEM1\MSVOA\_X\Data\VX062623\  
Data File : VX036340.D  
Acq On : 26 Jun 2023 19:37  
Operator : JC/MD  
Sample : VSTDCCC050  
Misc : 5.0mL/MSVOA\_X/WATER  
ALS Vial : 18 Sample Multiplier: 1

Instrument :  
MSVOA\_X  
ClientSampleId :

Quant Time: Jun 27 04:28:43 2023  
Quant Method : Z:\voasrv\HPCHEM1\MSVOA\_X\Method\82X062323W.M  
Quant Title : SW846 8260  
QLast Update : Fri Jun 23 15:03:28 2023  
Response via : Initial Calibration

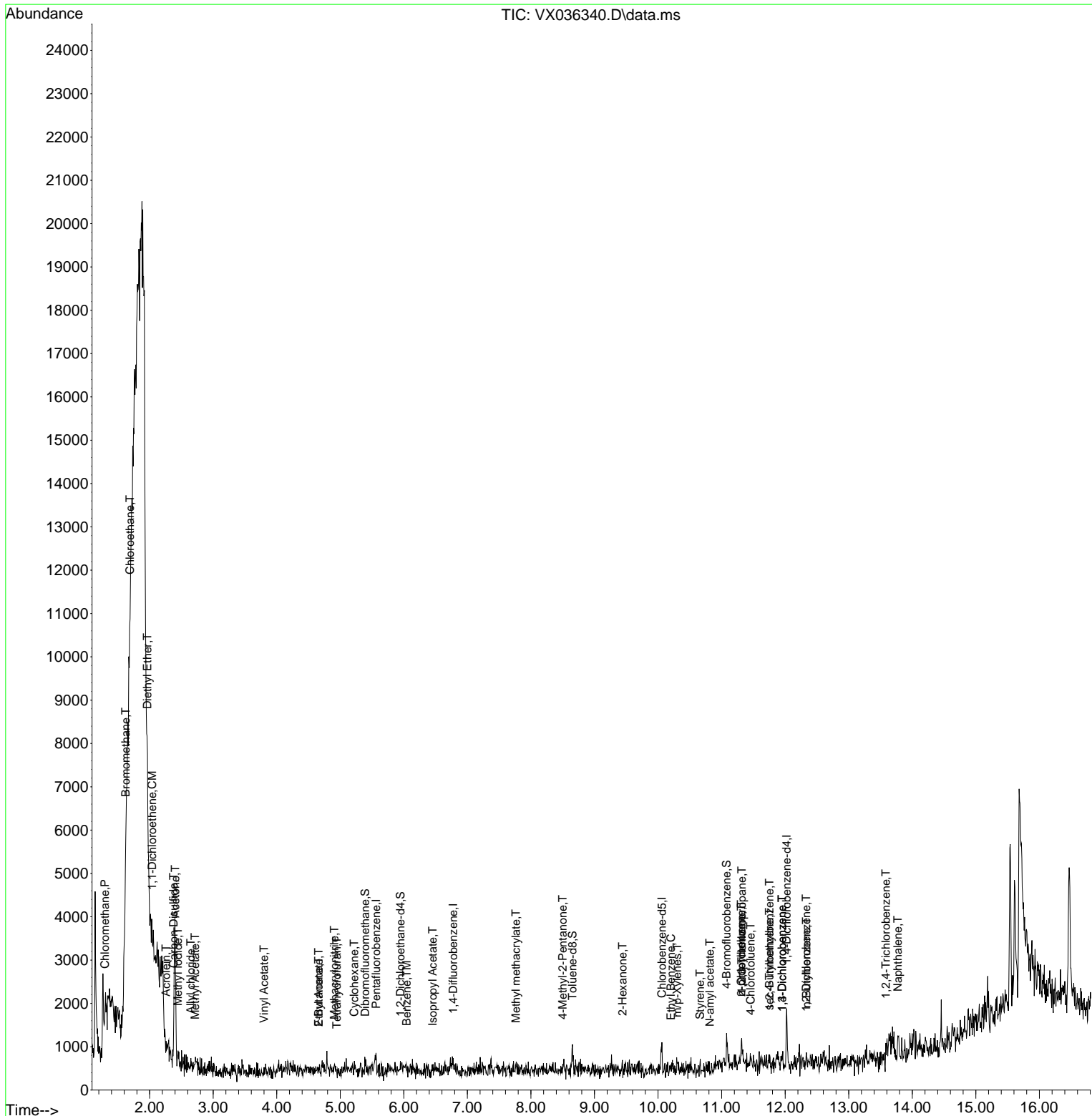
Compound	R.T.	QIon	Response	Conc	Units	Dev(Min)
93) 1,2,4-Trichlorobenzene	13.585	180	27	3.259	ug/l #	1
95) Naphthalene	13.774	128	799	29.188	ug/l #	69

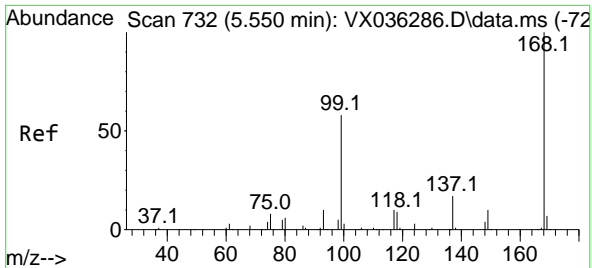
(#) = qualifier out of range (m) = manual integration (+) = signals summed

Data Path : Z:\voasrv\HPCHEM1\MSVOA\_X\Data\VX062623\  
 Data File : VX036340.D  
 Acq On : 26 Jun 2023 19:37  
 Operator : JC/MD  
 Sample : VSTDCCC050  
 Misc : 5.0mL/MSVOA\_X/WATER  
 ALS Vial : 18 Sample Multiplier: 1

Instrument :  
 MSVOA\_X  
 ClientSampleId :

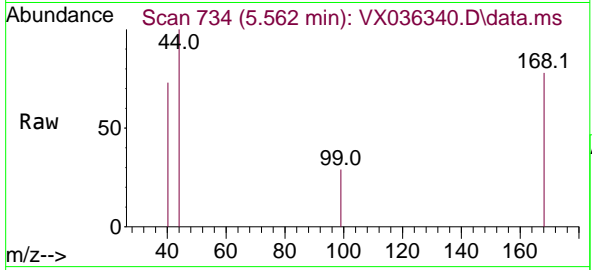
Quant Time: Jun 27 04:28:43 2023  
 Quant Method : Z:\voasrv\HPCHEM1\MSVOA\_X\Method\82X062323W.M  
 Quant Title : SW846 8260  
 QLast Update : Fri Jun 23 15:03:28 2023  
 Response via : Initial Calibration



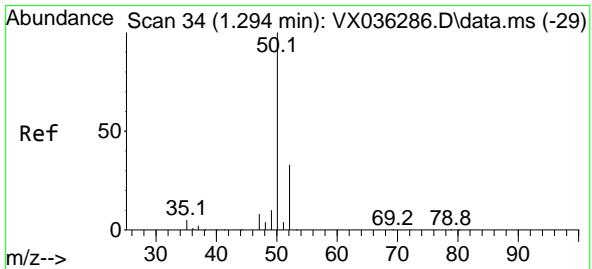
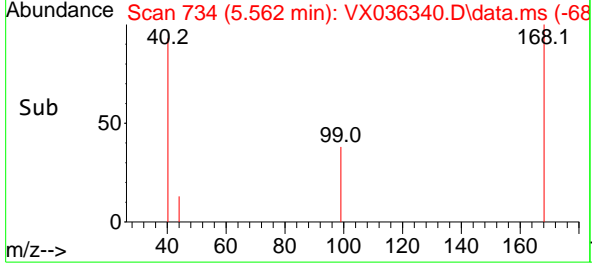
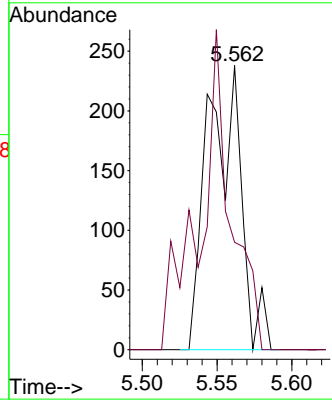


#1  
 Pentafluorobenzene  
 Concen: 50.000 ug/l  
 RT: 5.562 min Scan# 71  
 Delta R.T. 0.013 min  
 Lab File: VX036340.D  
 Acq: 26 Jun 2023 19:37

Instrument : MSVOA\_X  
 ClientSampleId :

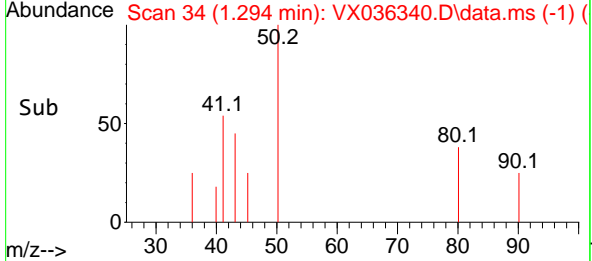
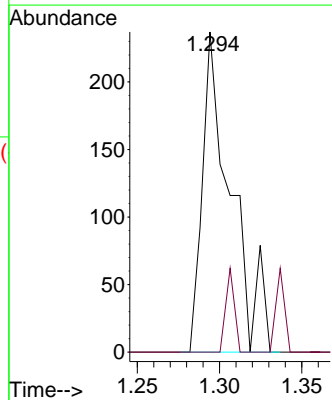
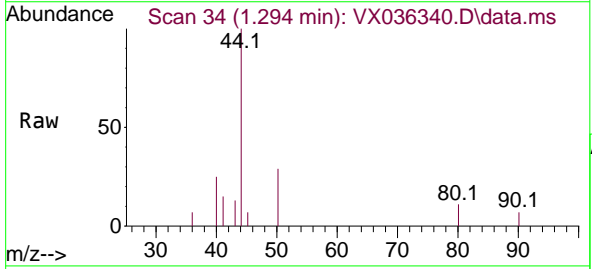


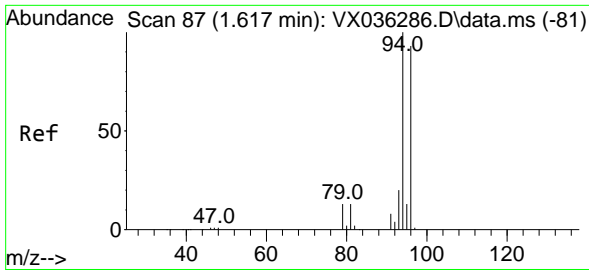
Tgt Ion:168 Resp: 372  
 Ion Ratio Lower Upper  
 168 100  
 99 37.8 56.6 85.0#



#3  
 Chloromethane  
 Concen: 46.649 ug/l  
 RT: 1.294 min Scan# 34  
 Delta R.T. 0.000 min  
 Lab File: VX036340.D  
 Acq: 26 Jun 2023 19:37

Tgt Ion: 50 Resp: 285  
 Ion Ratio Lower Upper  
 50 100  
 52 0.0 25.5 38.3#

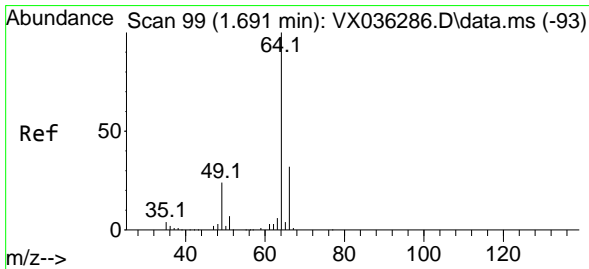
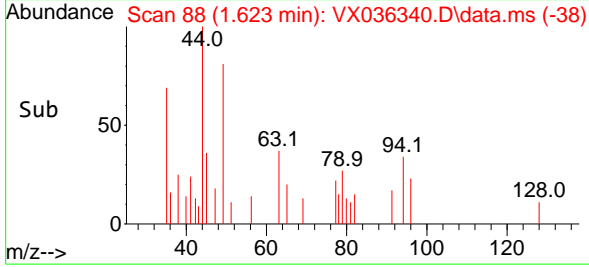
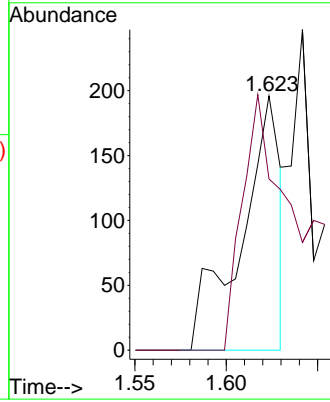
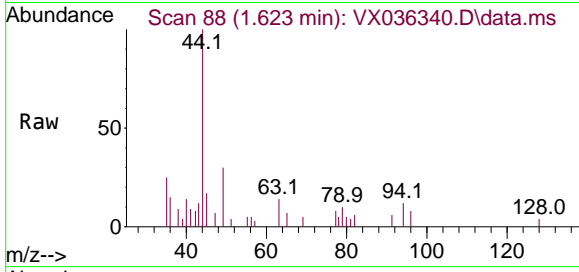




#5  
 Bromomethane  
 Concen: 60.156 ug/l  
 RT: 1.623 min Scan# 81  
 Delta R.T. 0.006 min  
 Lab File: VX036340.D  
 Acq: 26 Jun 2023 19:37

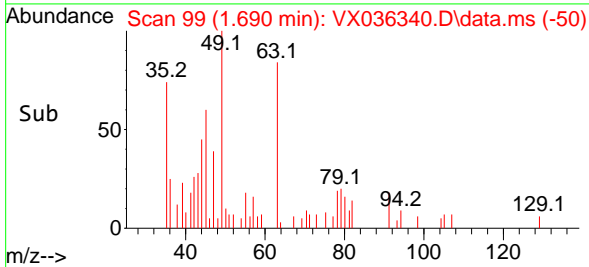
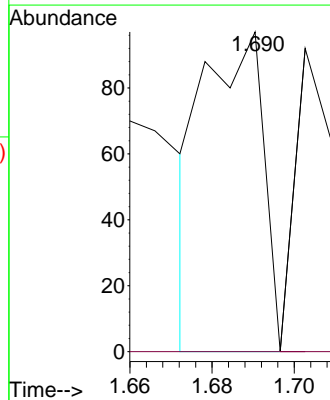
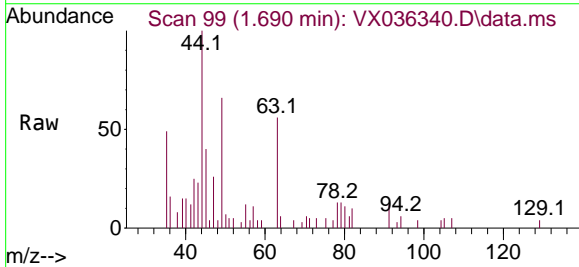
Instrument :  
 MSVOA\_X  
 ClientSampleId :

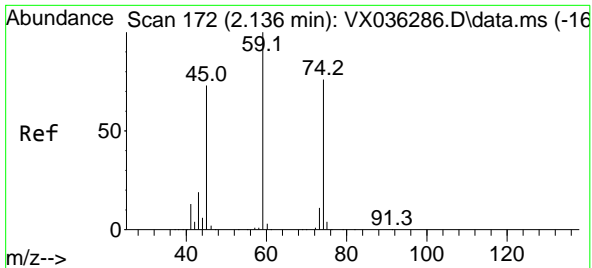
Tgt Ion: 94 Resp: 294  
 Ion Ratio Lower Upper  
 94 100  
 96 67.3 74.6 111.8#



#6  
 Chloroethane  
 Concen: 19.782 ug/l  
 RT: 1.690 min Scan# 99  
 Delta R.T. 0.000 min  
 Lab File: VX036340.D  
 Acq: 26 Jun 2023 19:37

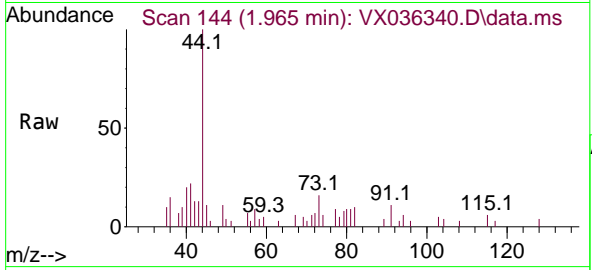
Tgt Ion: 64 Resp: 97  
 Ion Ratio Lower Upper  
 64 100  
 66 0.0 25.1 37.7#



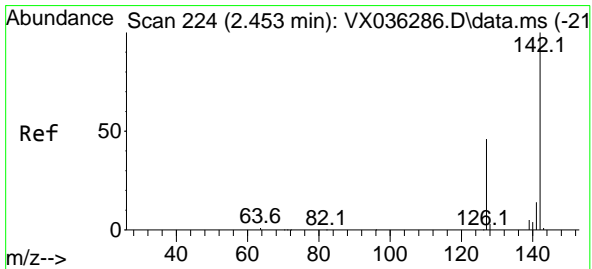
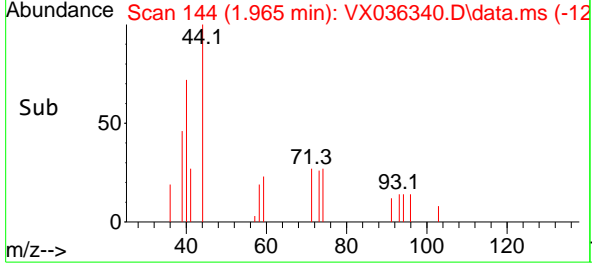
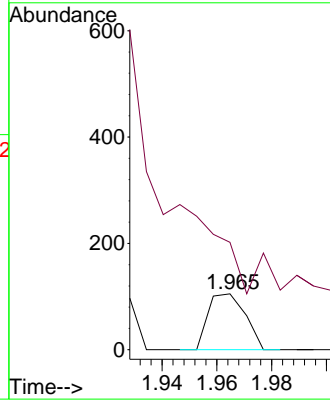


#8  
 Diethyl Ether  
 Concen: 25.255 ug/l  
 RT: 1.965 min Scan# 14  
 Delta R.T. -0.170 min  
 Lab File: VX036340.D  
 Acq: 26 Jun 2023 19:37

Instrument :  
 MSVOA\_X  
 ClientSampleId :

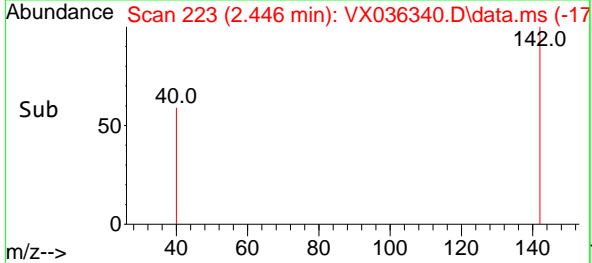
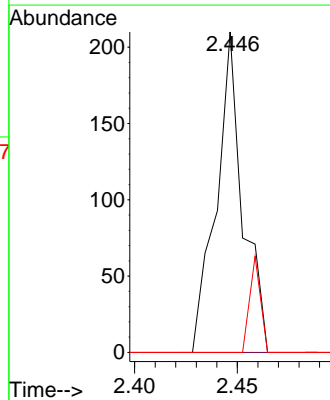
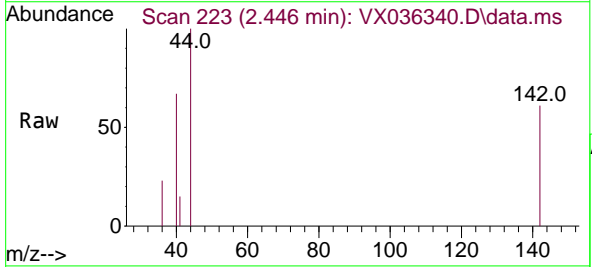


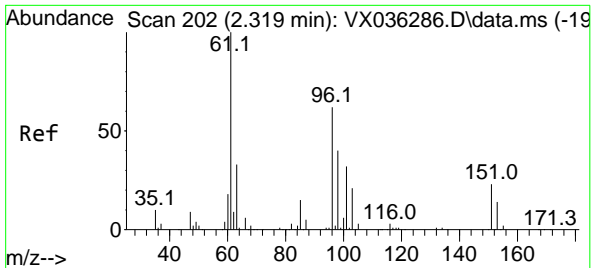
Tgt Ion: 74 Resp: 99  
 Ion Ratio Lower Upper  
 74 100  
 45 0.0 53.3 159.8#



#10  
 Methyl Iodide  
 Concen: 36.406 ug/l  
 RT: 2.446 min Scan# 223  
 Delta R.T. -0.006 min  
 Lab File: VX036340.D  
 Acq: 26 Jun 2023 19:37

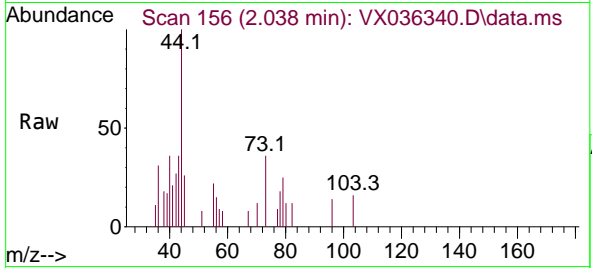
Tgt Ion: 142 Resp: 188  
 Ion Ratio Lower Upper  
 142 100  
 127 0.0 41.6 62.4#  
 141 12.2 11.6 17.4



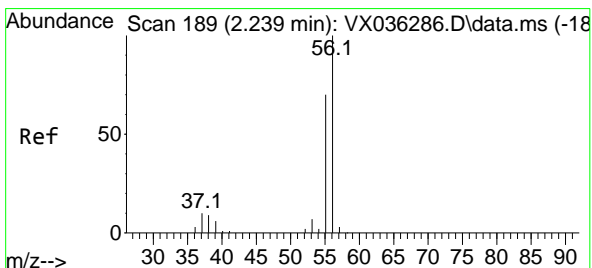
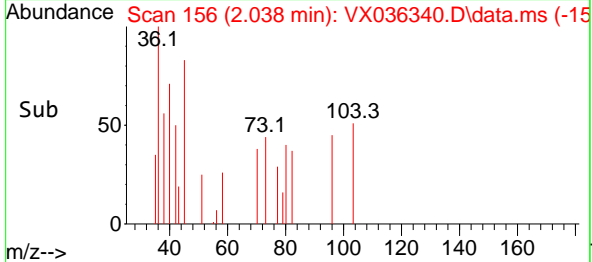
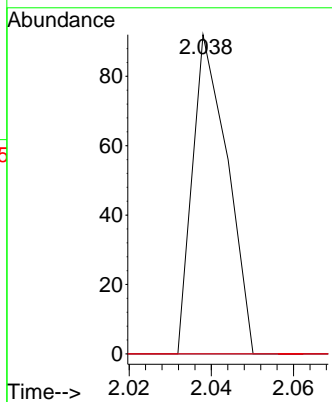


#12  
 1,1-Dichloroethene  
 Concen: 12.773 ug/l  
 RT: 2.038 min Scan# 11  
 Delta R.T. -0.280 min  
 Lab File: VX036340.D  
 Acq: 26 Jun 2023 19:37

Instrument :  
 MSVOA\_X  
 ClientSampleId :

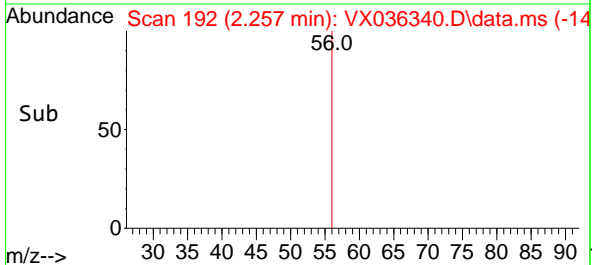
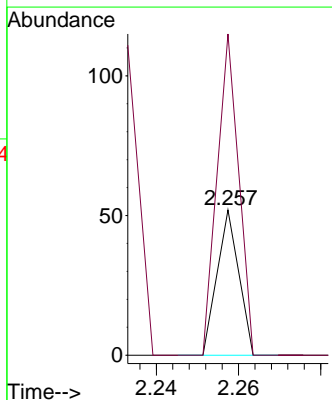
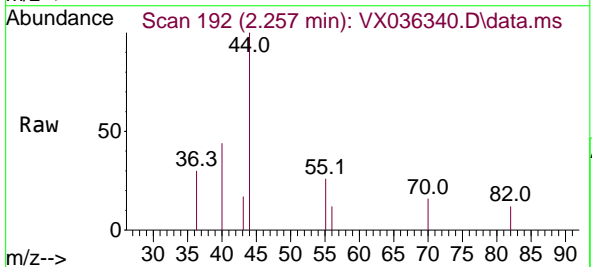


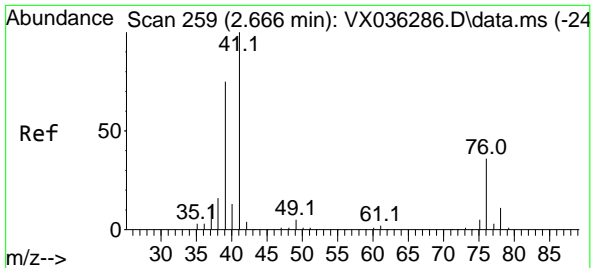
Tgt Ion	Resp	Lower	Upper
96	100		
61	0.0	144.6	216.8#
98	0.0	50.4	75.6#



#13  
 Acrolein  
 Concen: 14.253 ug/l  
 RT: 2.257 min Scan# 192  
 Delta R.T. 0.018 min  
 Lab File: VX036340.D  
 Acq: 26 Jun 2023 19:37

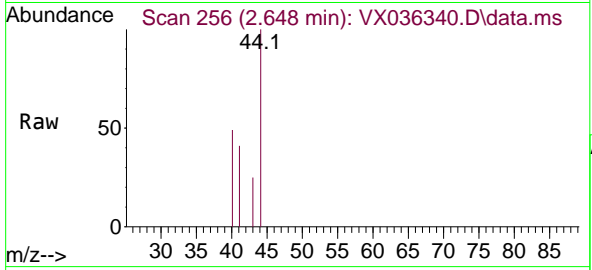
Tgt Ion	Resp	Lower	Upper
56	100		
55	221.1	57.1	85.7#



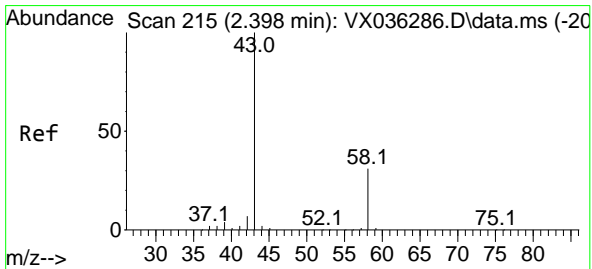
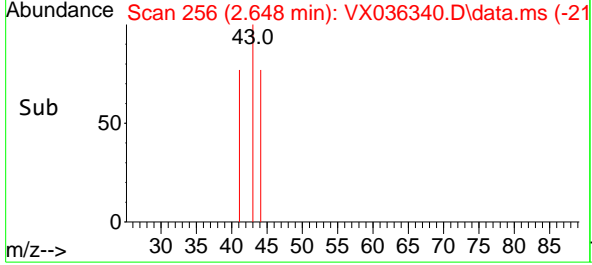
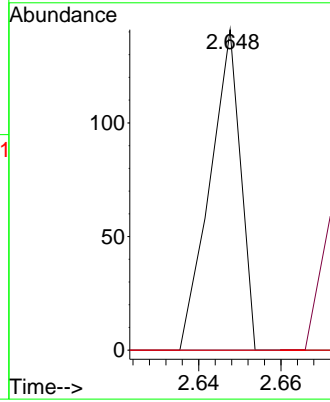


#14  
 Allyl chloride  
 Concen: 10.625 ug/l  
 RT: 2.648 min Scan# 216  
 Delta R.T. -0.018 min  
 Lab File: VX036340.D  
 Acq: 26 Jun 2023 19:37

Instrument : MSVOA\_X  
 ClientSampleId :

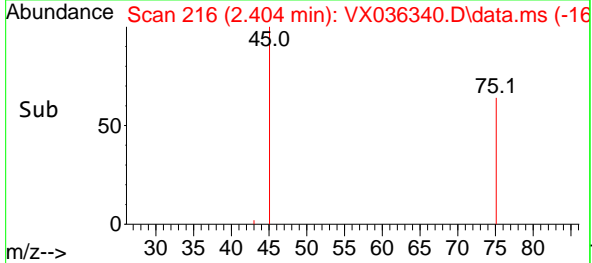
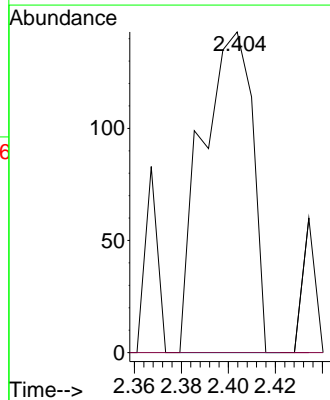
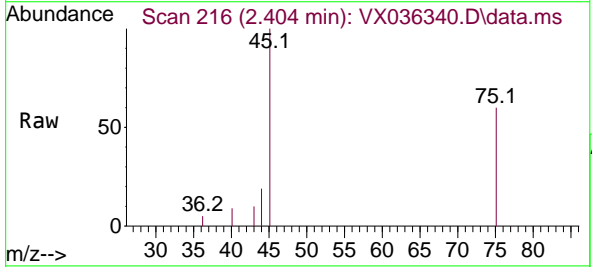


Tgt Ion	Resp	Lower	Upper
41	100		
39	0.0	55.8	83.6#
76	0.0	24.3	36.5#

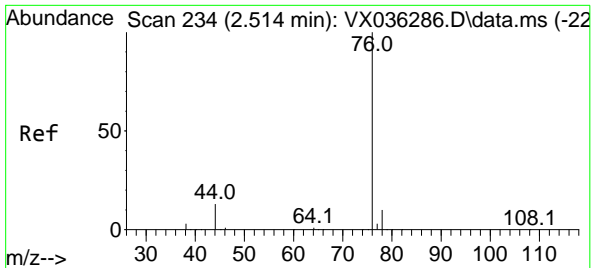


#16  
 Acetone  
 Concen: 93.454 ug/l  
 RT: 2.404 min Scan# 216  
 Delta R.T. -0.000 min  
 Lab File: VX036340.D  
 Acq: 26 Jun 2023 19:37

Tgt Ion	Resp	Lower	Upper
43	100		
58	0.0	21.9	32.9#

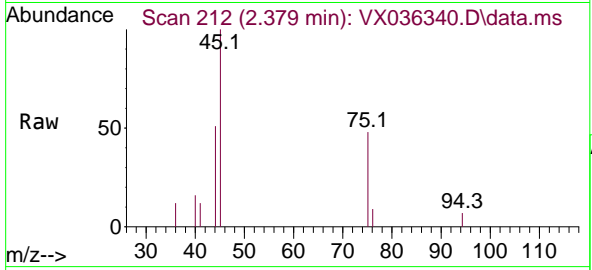




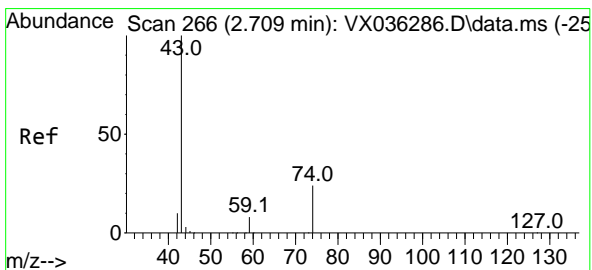
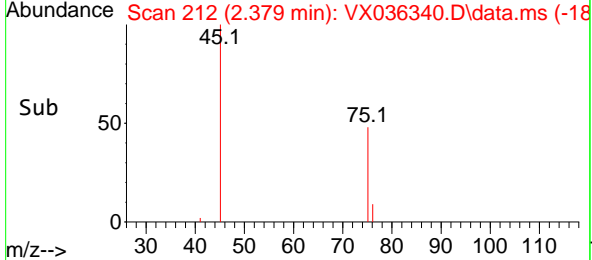
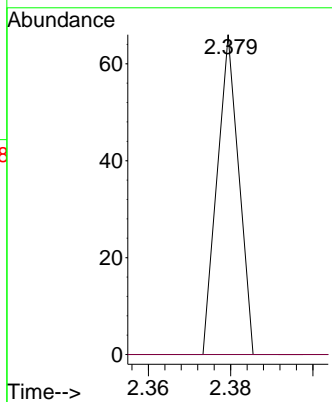


#17  
 Carbon Disulfide  
 Concen: 2.311 ug/l  
 RT: 2.379 min Scan# 211  
 Delta R.T. -0.134 min  
 Lab File: VX036340.D  
 Acq: 26 Jun 2023 19:37

Instrument : MSVOA\_X  
 ClientSampleId :

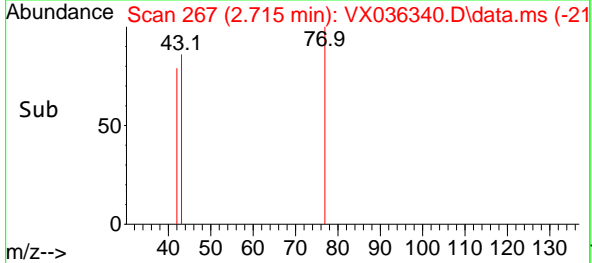
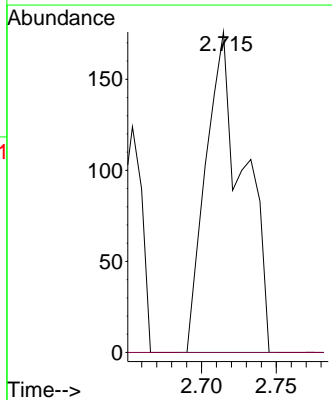
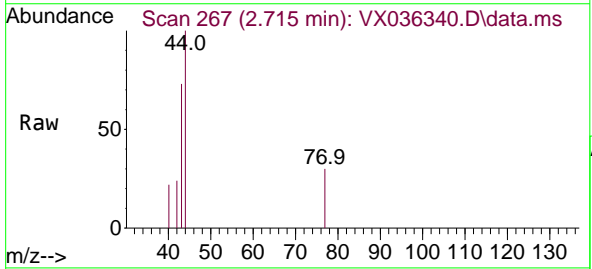


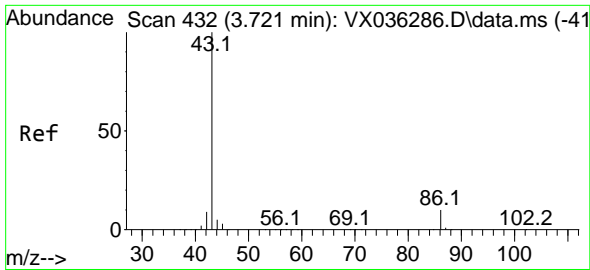
Tgt Ion: 76 Resp: 24  
 Ion Ratio Lower Upper  
 76 100  
 78 0.0 7.0 10.6#



#18  
 Methyl Acetate  
 Concen: 33.182 ug/l  
 RT: 2.715 min Scan# 267  
 Delta R.T. 0.006 min  
 Lab File: VX036340.D  
 Acq: 26 Jun 2023 19:37

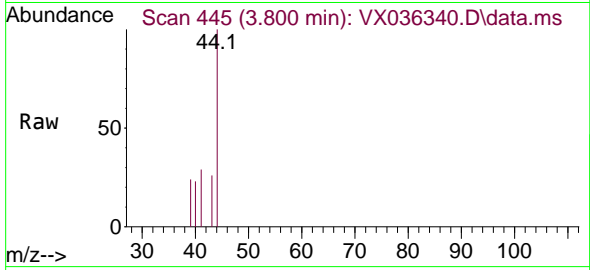
Tgt Ion: 43 Resp: 311  
 Ion Ratio Lower Upper  
 43 100  
 74 0.0 17.8 26.8#



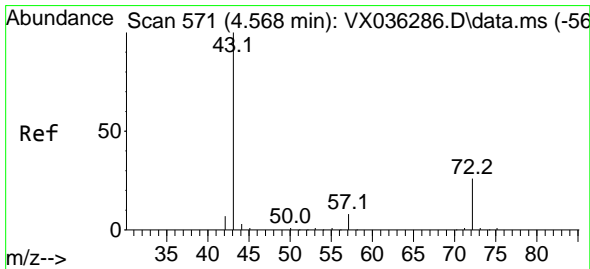
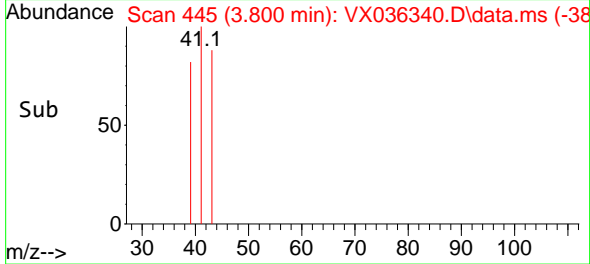
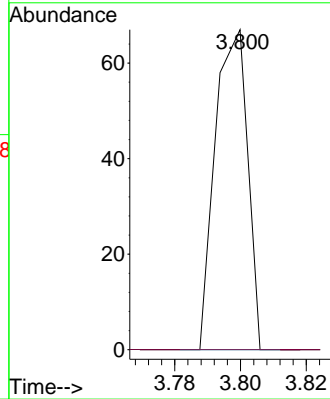


#23  
 Vinyl Acetate  
 Concen: 4.604 ug/l  
 RT: 3.800 min Scan# 44  
 Delta R.T. 0.079 min  
 Lab File: VX036340.D  
 Acq: 26 Jun 2023 19:37

Instrument :  
 MSVOA\_X  
 ClientSampleId :

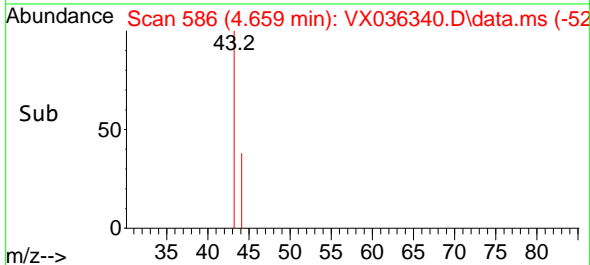
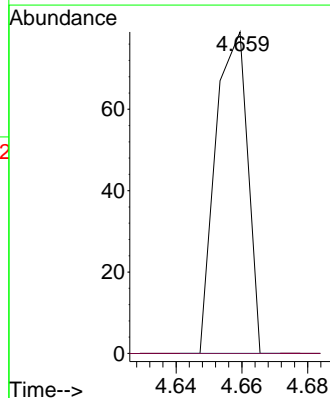
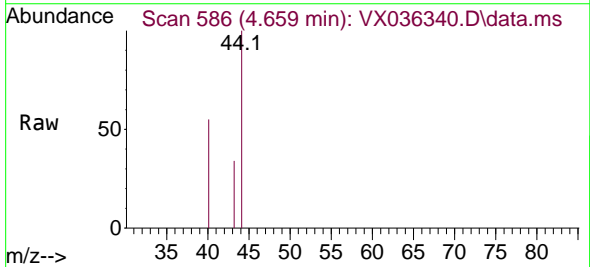


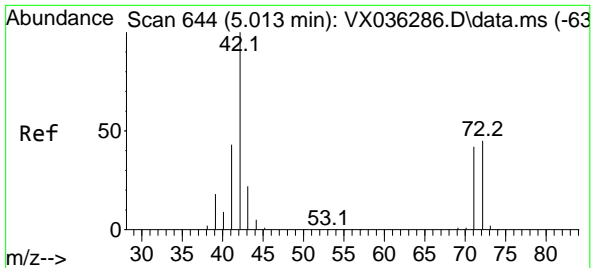
Tgt Ion: 43 Resp: 46  
 Ion Ratio Lower Upper  
 43 100  
 86 0.0 7.8 11.8#



#25  
 2-Butanone  
 Concen: 16.184 ug/l  
 RT: 4.659 min Scan# 586  
 Delta R.T. 0.091 min  
 Lab File: VX036340.D  
 Acq: 26 Jun 2023 19:37

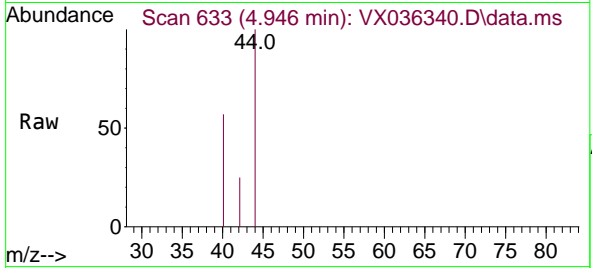
Tgt Ion: 43 Resp: 53  
 Ion Ratio Lower Upper  
 43 100  
 72 0.0 19.4 29.2#



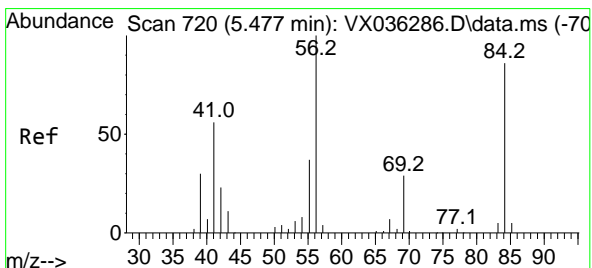
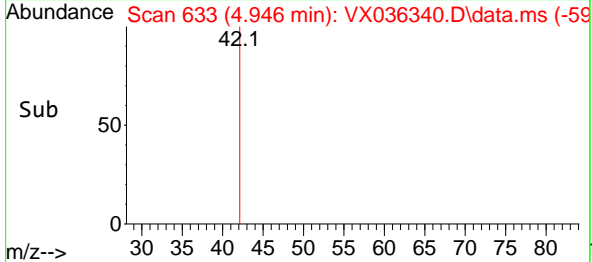
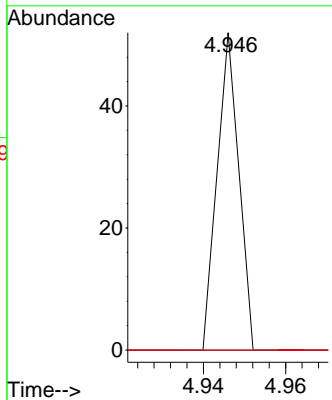


#29  
 Tetrahydrofuran  
 Concen: 9.113 ug/l  
 RT: 4.946 min Scan# 611  
 Delta R.T. -0.073 min  
 Lab File: VX036340.D  
 Acq: 26 Jun 2023 19:37

Instrument : MSVOA\_X  
 ClientSampleId :

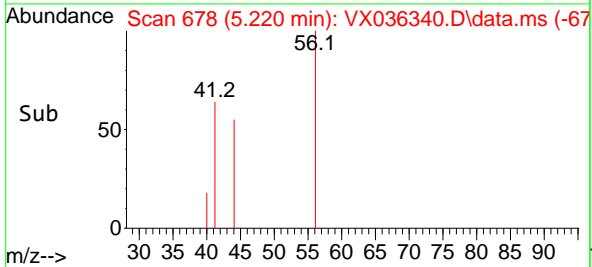
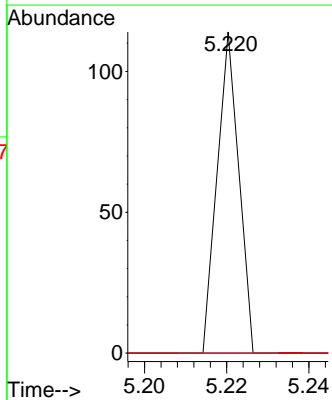
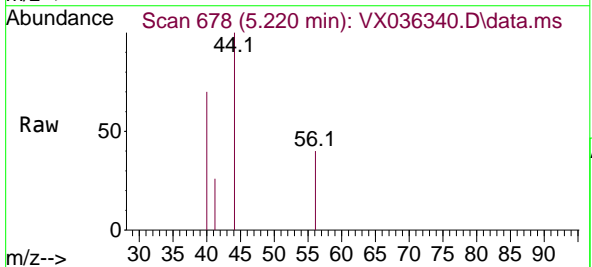


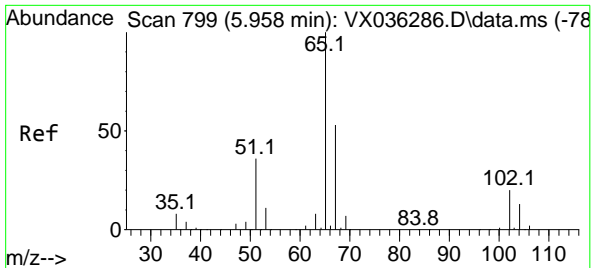
Tgt Ion	Ratio	Lower	Upper
42	100		
72	0.0	34.2	51.4#
71	0.0	32.2	48.2#



#31  
 Cyclohexane  
 Concen: 6.146 ug/l  
 RT: 5.220 min Scan# 678  
 Delta R.T. -0.250 min  
 Lab File: VX036340.D  
 Acq: 26 Jun 2023 19:37

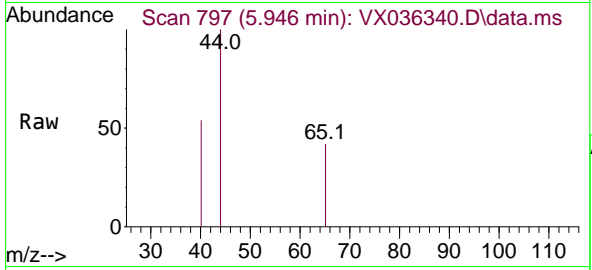
Tgt Ion	Ratio	Lower	Upper
56	100		
69	0.0	23.4	35.2#
84	0.0	65.9	98.9#



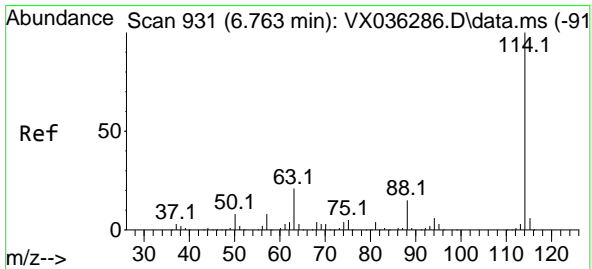
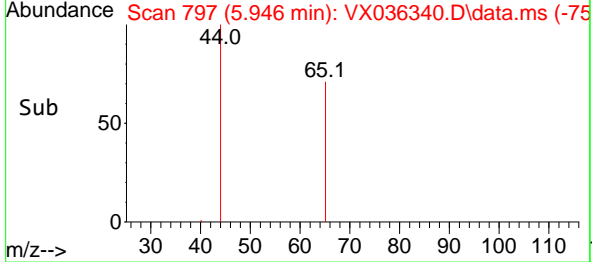
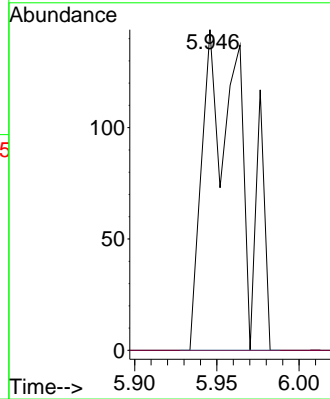


#33  
 1,2-Dichloroethane-d4  
 Concen: 45.571 ug/l  
 RT: 5.946 min Scan# 797  
 Delta R.T. -0.012 min  
 Lab File: VX036340.D  
 Acq: 26 Jun 2023 19:37

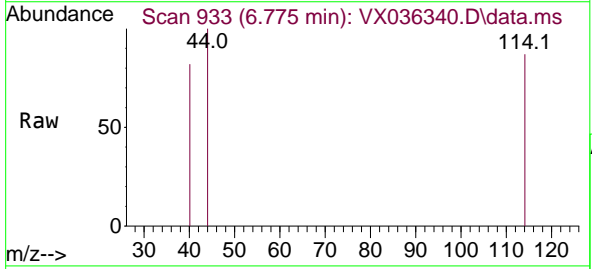
Instrument : MSVOA\_X  
 ClientSampleId :



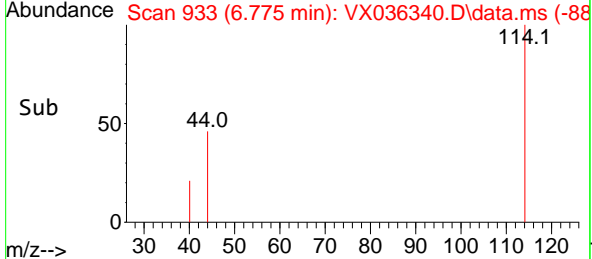
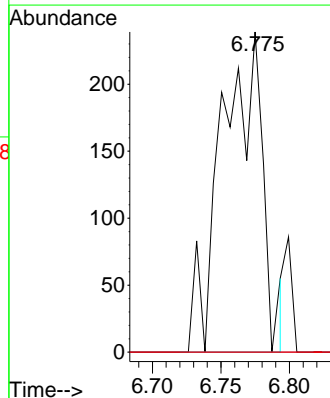
Tgt Ion: 65 Resp: 243  
 Ion Ratio Lower Upper  
 65 100  
 67 0.0 0.0 100.2

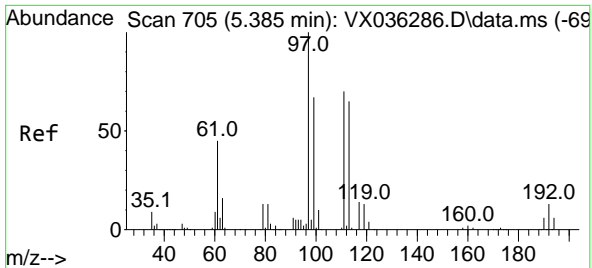


#34  
 1,4-Difluorobenzene  
 Concen: 50.000 ug/l  
 RT: 6.775 min Scan# 933  
 Delta R.T. 0.012 min  
 Lab File: VX036340.D  
 Acq: 26 Jun 2023 19:37



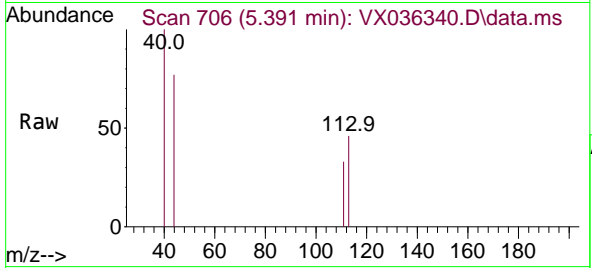
Tgt Ion: 114 Resp: 497  
 Ion Ratio Lower Upper  
 114 100  
 63 0.0 0.0 45.0  
 88 0.0 0.0 36.6



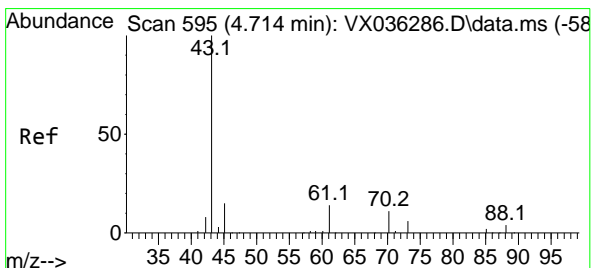
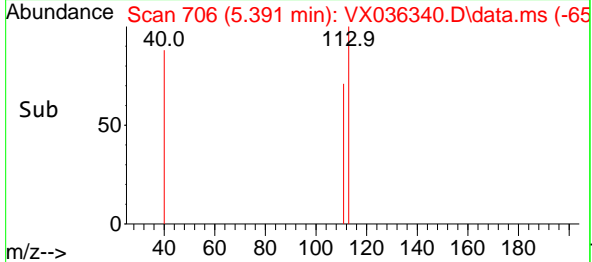
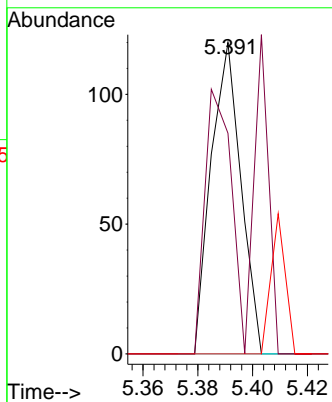


#35  
 Dibromofluoromethane  
 Concen: 27.769 ug/l  
 RT: 5.391 min Scan# 705  
 Delta R.T. 0.006 min  
 Lab File: VX036340.D  
 Acq: 26 Jun 2023 19:37

Instrument : MSVOA\_X  
 ClientSampleId :

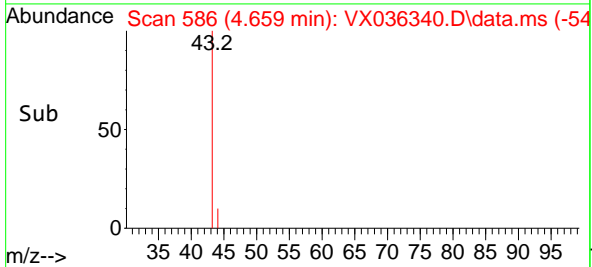
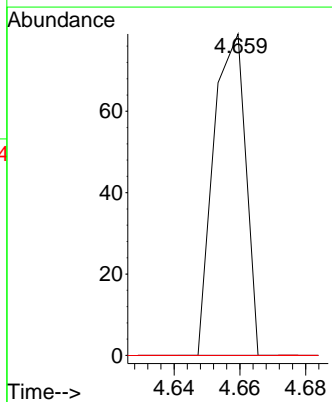
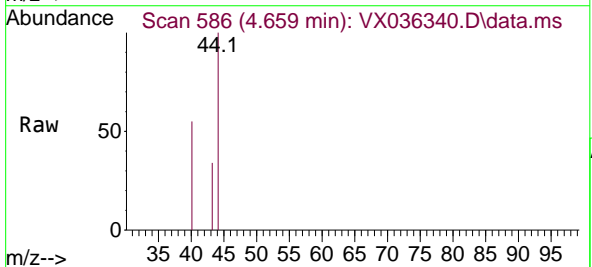


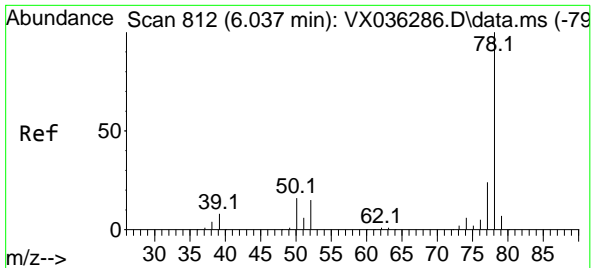
Tgt Ion	Resp	Lower	Upper
113	100		
111	74.7	82.9	124.3#
192	0.0	13.3	19.9#



#37  
 Ethyl Acetate  
 Concen: 10.645 ug/l  
 RT: 4.659 min Scan# 586  
 Delta R.T. -0.055 min  
 Lab File: VX036340.D  
 Acq: 26 Jun 2023 19:37

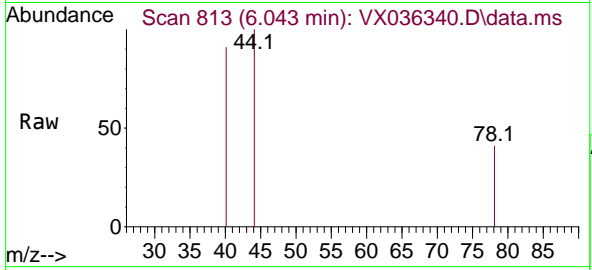
Tgt Ion	Resp	Lower	Upper
43	100		
61	0.0	10.6	16.0#
70	0.0	8.3	12.5#



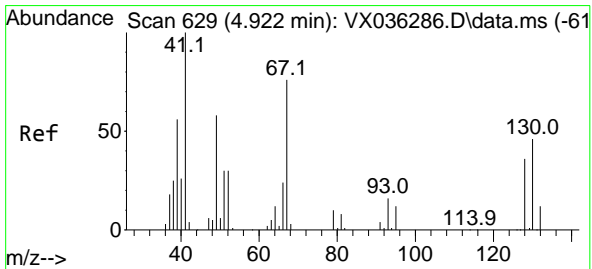
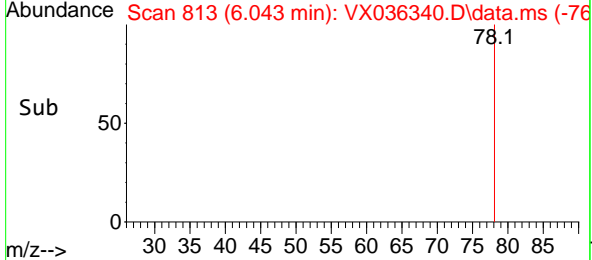
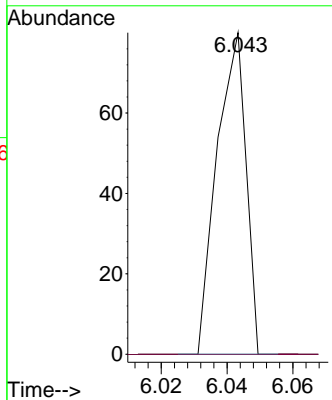


#40  
Benzene  
Concen: 3.591 ug/l  
RT: 6.043 min Scan# 812  
Delta R.T. 0.006 min  
Lab File: VX036340.D  
Acq: 26 Jun 2023 19:37

Instrument :  
MSVOA\_X  
ClientSampleId :

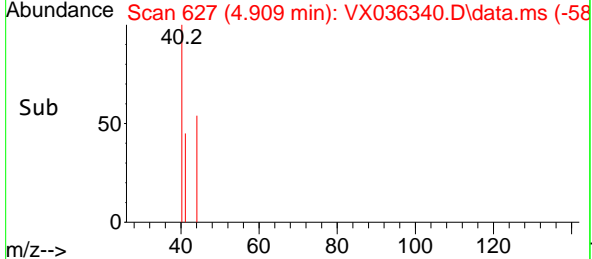
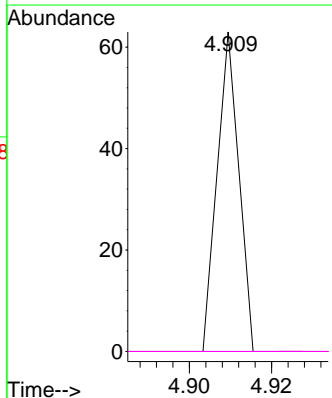
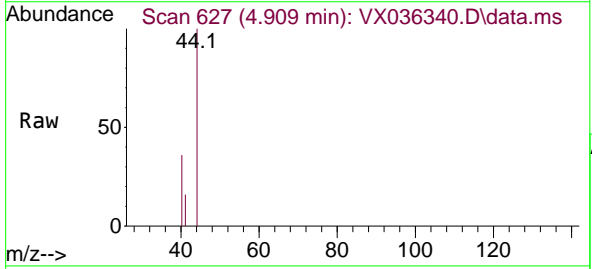


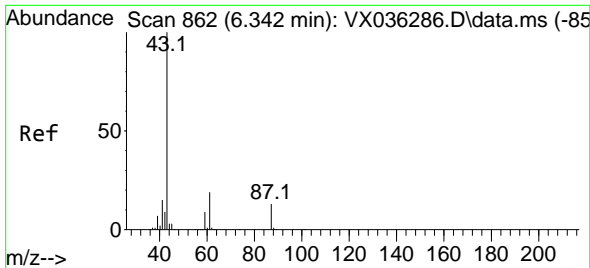
Tgt Ion: 78 Resp: 49  
Ion Ratio Lower Upper  
78 100  
77 0.0 19.3 28.9#



#41  
Methacrylonitrile  
Concen: 8.327 ug/l  
RT: 4.909 min Scan# 627  
Delta R.T. -0.013 min  
Lab File: VX036340.D  
Acq: 26 Jun 2023 19:37

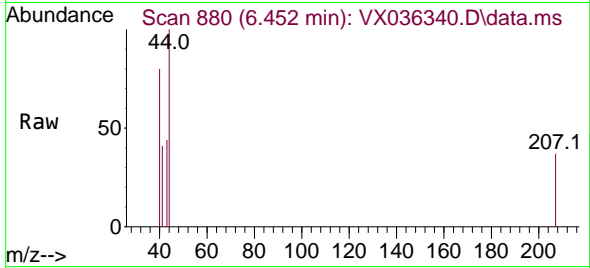
Tgt Ion: 41 Resp: 23  
Ion Ratio Lower Upper  
41 100  
39 0.0 45.2 67.8#  
67 0.0 52.6 78.8#  
52 0.0 22.7 34.1#



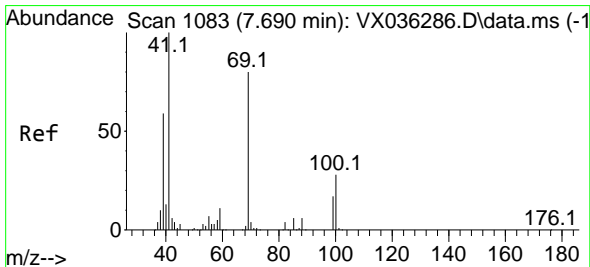
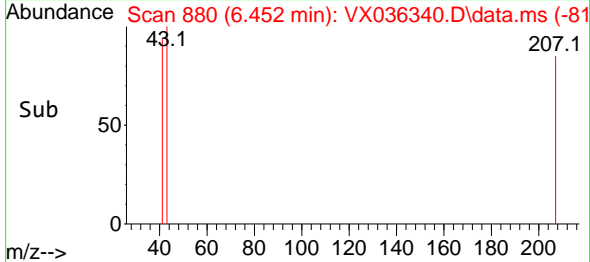
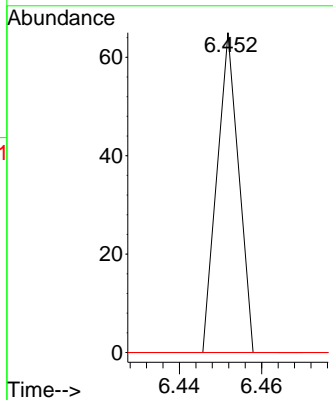


#43  
 Isopropyl Acetate  
 Concen: 3.022 ug/l  
 RT: 6.452 min Scan# 81  
 Delta R.T. 0.110 min  
 Lab File: VX036340.D  
 Acq: 26 Jun 2023 19:37

Instrument :  
 MSVOA\_X  
 ClientSampleId :

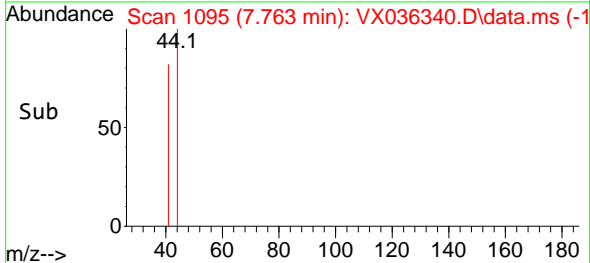
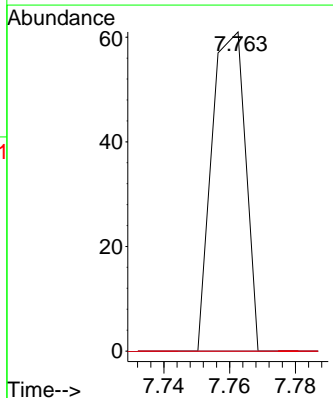
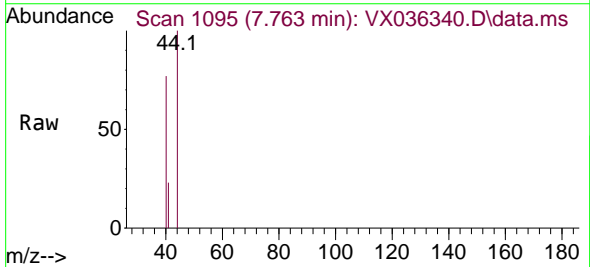


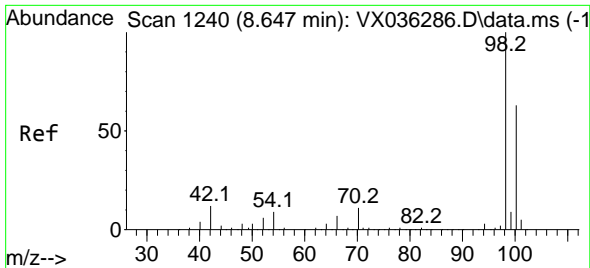
Tgt Ion	Resp	Lower	Upper
43	100		
61	0.0	15.2	22.8#
87	0.0	9.8	14.6#



#48  
 Methyl methacrylate  
 Concen: 10.858 ug/l  
 RT: 7.763 min Scan# 1095  
 Delta R.T. 0.074 min  
 Lab File: VX036340.D  
 Acq: 26 Jun 2023 19:37

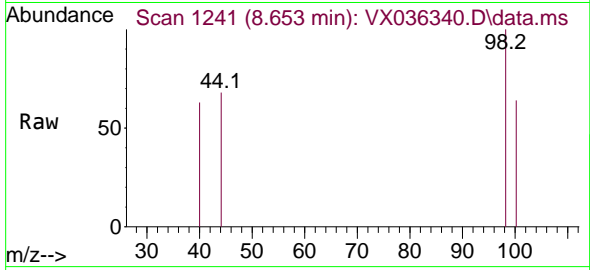
Tgt Ion	Resp	Lower	Upper
41	100		
69	0.0	59.2	88.8#
39	0.0	47.7	71.5#



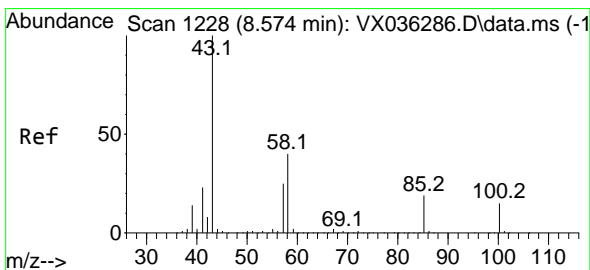
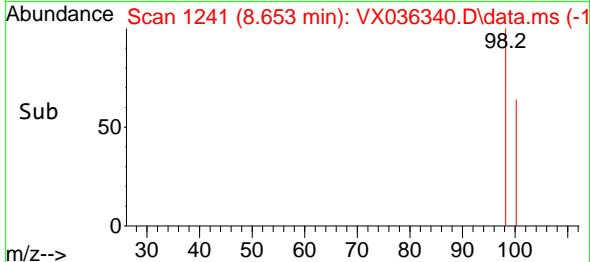
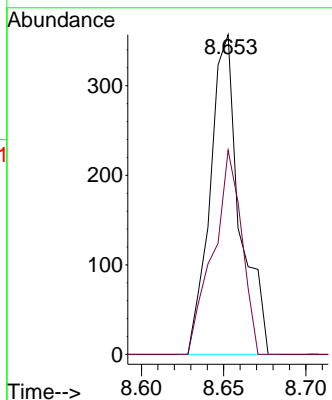


#50  
 Toluene-d8  
 Concen: 36.520 ug/l  
 RT: 8.653 min Scan# 11  
 Delta R.T. 0.007 min  
 Lab File: VX036340.D  
 Acq: 26 Jun 2023 19:37

Instrument :  
 MSVOA\_X  
 ClientSampleId :

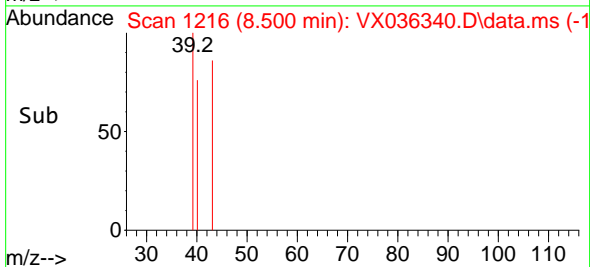
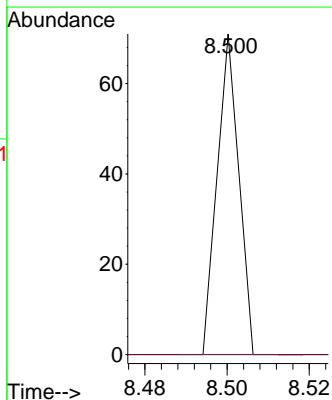
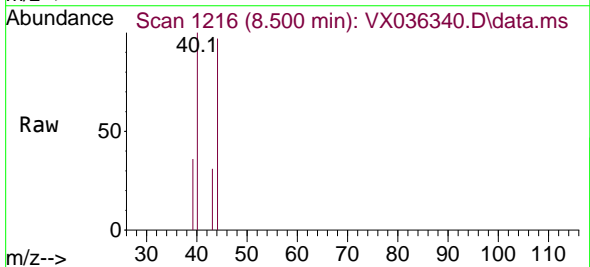


Tgt Ion: 98 Resp: 447  
 Ion Ratio Lower Upper  
 98 100  
 100 61.5 53.1 79.7

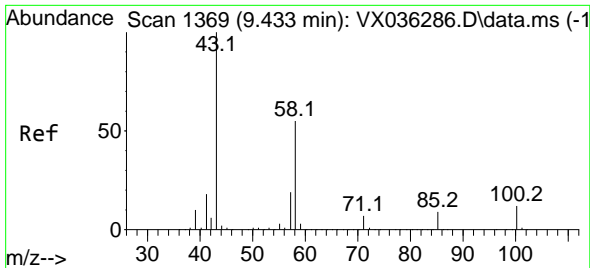


#51  
 4-Methyl-2-Pentanone  
 Concen: 5.081 ug/l  
 RT: 8.500 min Scan# 1216  
 Delta R.T. -0.073 min  
 Lab File: VX036340.D  
 Acq: 26 Jun 2023 19:37

Tgt Ion: 43 Resp: 26  
 Ion Ratio Lower Upper  
 43 100  
 58 0.0 30.4 45.6#



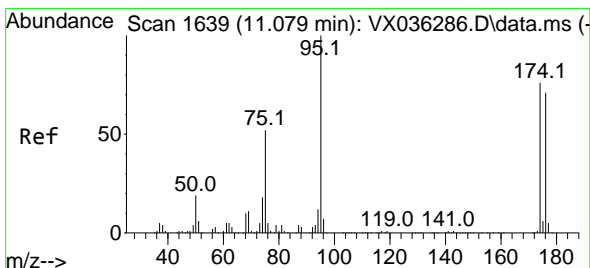
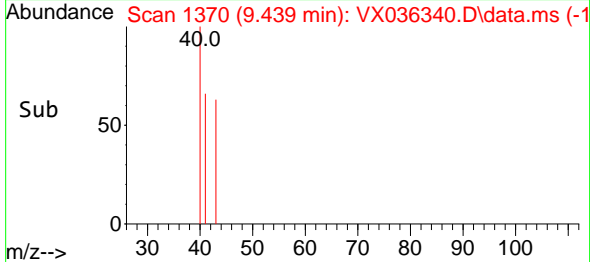
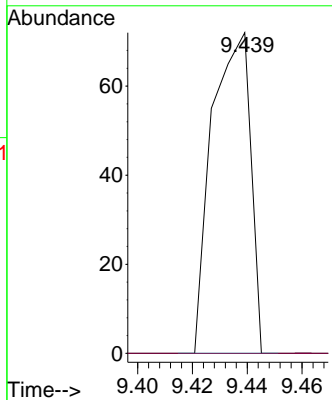
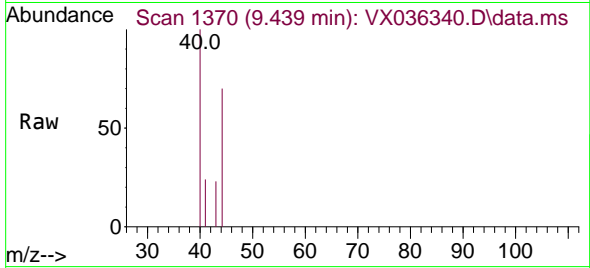




#59  
 2-Hexanone  
 Concen: 18.733 ug/l  
 RT: 9.439 min Scan# 11  
 Delta R.T. 0.006 min  
 Lab File: VX036340.D  
 Acq: 26 Jun 2023 19:37

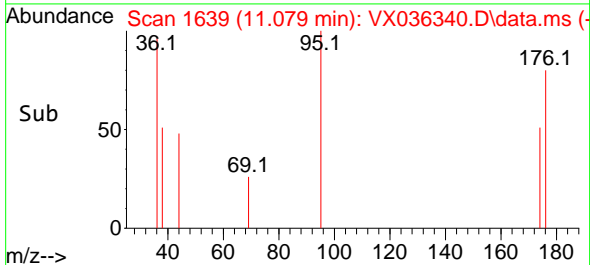
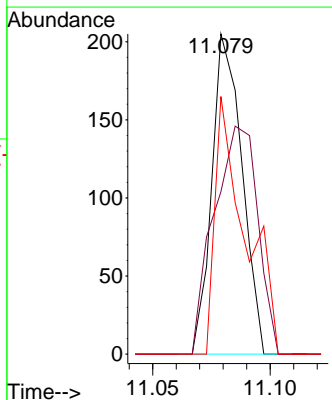
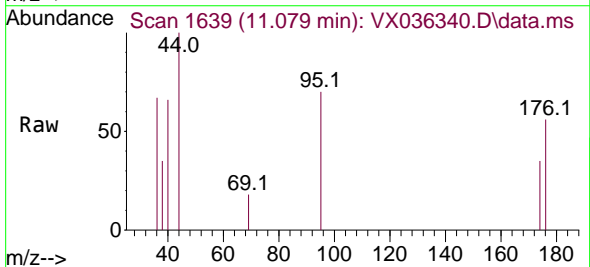
Instrument :  
 MSVOA\_X  
 ClientSampleId :

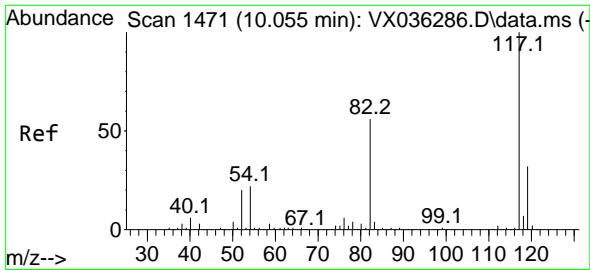
Tgt Ion: 43 Resp: 70  
 Ion Ratio Lower Upper  
 43 100  
 58 0.0 26.2 78.5#



#62  
 4-Bromofluorobenzene  
 Concen: 42.215 ug/l  
 RT: 11.079 min Scan# 1639  
 Delta R.T. 0.000 min  
 Lab File: VX036340.D  
 Acq: 26 Jun 2023 19:37

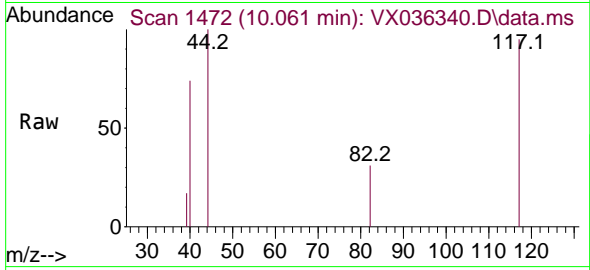
Tgt Ion: 95 Resp: 182  
 Ion Ratio Lower Upper  
 95 100  
 174 103.8 0.0 135.6  
 176 80.8 0.0 131.0





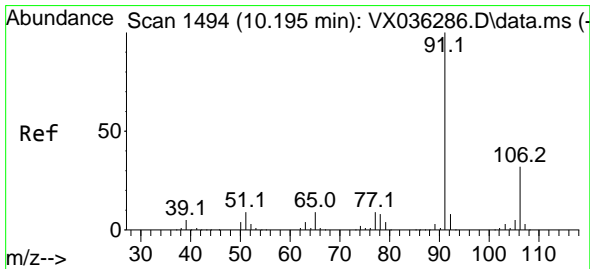
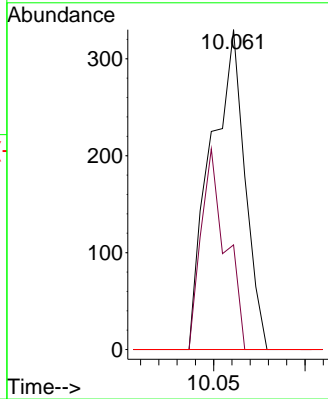
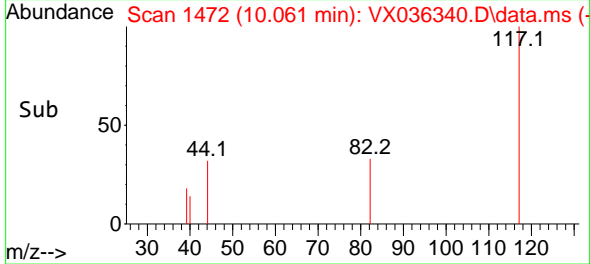
#63  
 Chlorobenzene-d5  
 Concen: 50.000 ug/l  
 RT: 10.061 min Scan# 1471  
 Delta R.T. 0.006 min  
 Lab File: VX036340.D  
 Acq: 26 Jun 2023 19:37

Instrument : MSVOA\_X  
 ClientSampleId :

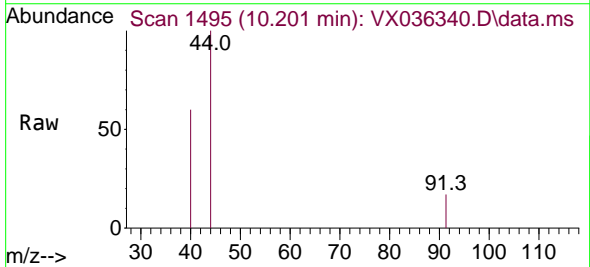


Tgt Ion: 117 Resp: 428

Ion	Ratio	Lower	Upper
117	100		
82	32.7	46.2	69.4#
119	0.0	25.5	38.3#

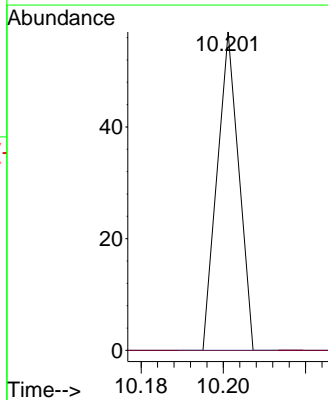
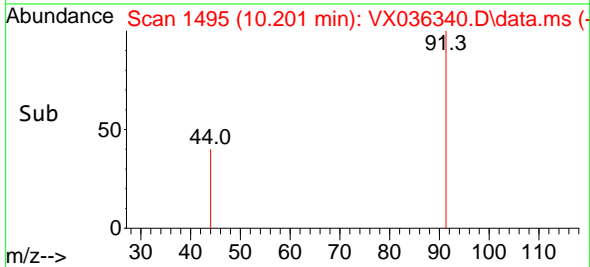


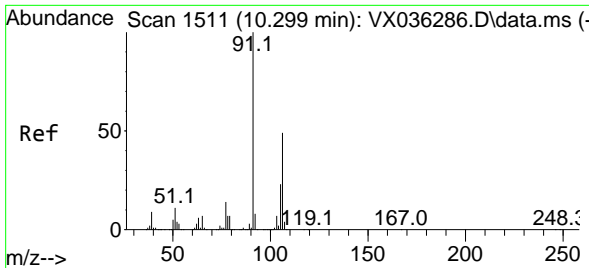
#67  
 Ethyl Benzene  
 Concen: 1.313 ug/l  
 RT: 10.201 min Scan# 1495  
 Delta R.T. 0.006 min  
 Lab File: VX036340.D  
 Acq: 26 Jun 2023 19:37



Tgt Ion: 91 Resp: 21

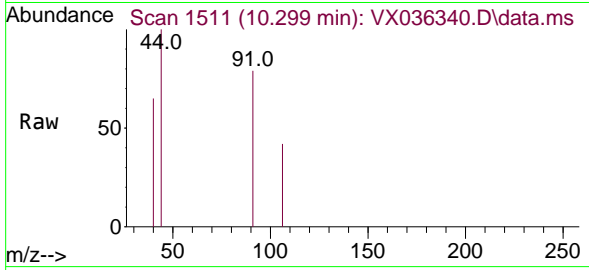
Ion	Ratio	Lower	Upper
91	100		
106	0.0	24.9	37.3#



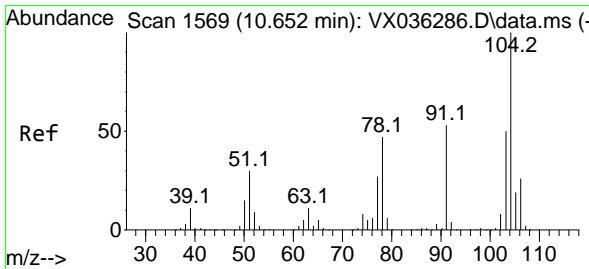
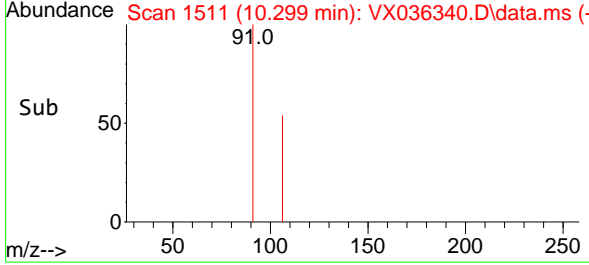
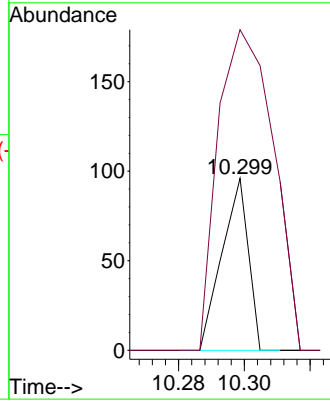


#68  
 m/p-Xylenes  
 Concen: 8.529 ug/l  
 RT: 10.299 min Scan# 1511  
 Delta R.T. -0.000 min  
 Lab File: VX036340.D  
 Acq: 26 Jun 2023 19:37

Instrument : MSVOA\_X  
 ClientSampleId :

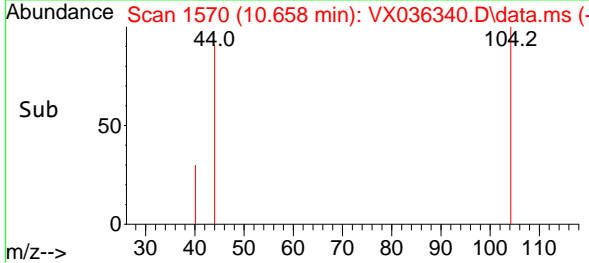
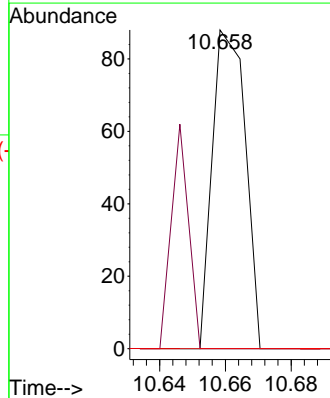
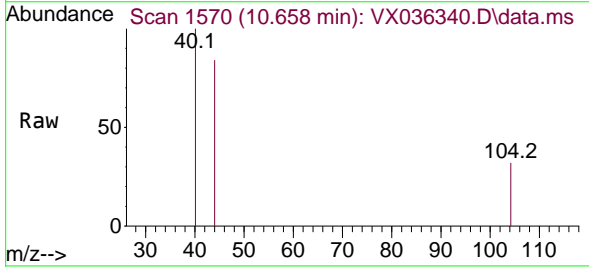


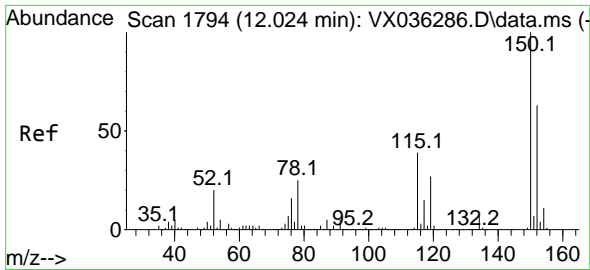
Tgt Ion:106 Resp: 53  
 Ion Ratio Lower Upper  
 106 100  
 91 394.3 165.5 248.3#



#70  
 Styrene  
 Concen: 6.208 ug/l  
 RT: 10.658 min Scan# 1570  
 Delta R.T. 0.006 min  
 Lab File: VX036340.D  
 Acq: 26 Jun 2023 19:37

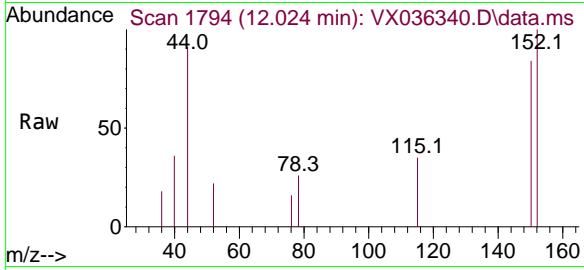
Tgt Ion:104 Resp: 61  
 Ion Ratio Lower Upper  
 104 100  
 78 37.7 43.6 65.4#  
 103 0.0 43.6 65.4#



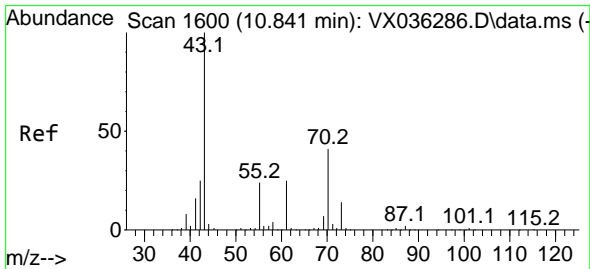
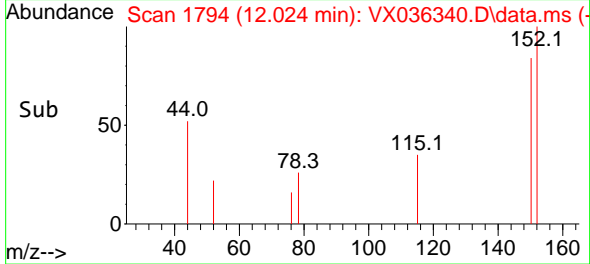
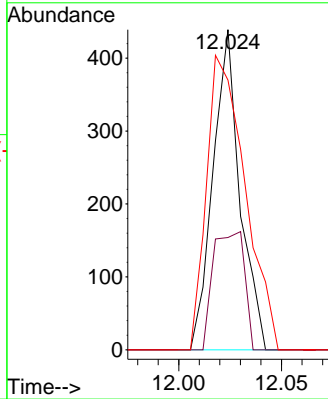


#72  
 1,4-Dichlorobenzene-d4  
 Concen: 50.000 ug/l  
 RT: 12.024 min Scan# 11  
 Delta R.T. -0.000 min  
 Lab File: VX036340.D  
 Acq: 26 Jun 2023 19:37

Instrument : MSVOA\_X  
 ClientSampleId :

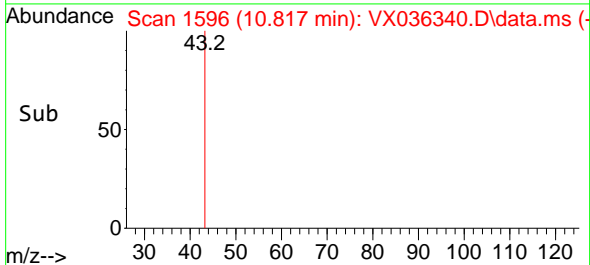
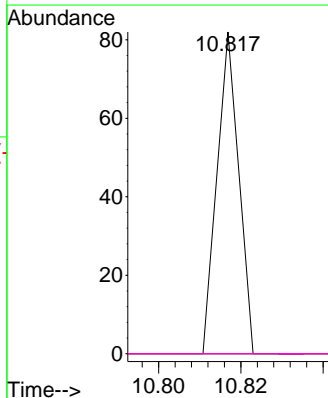
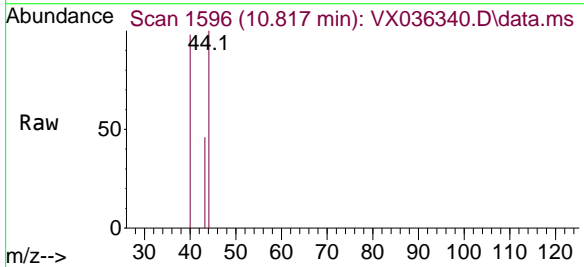


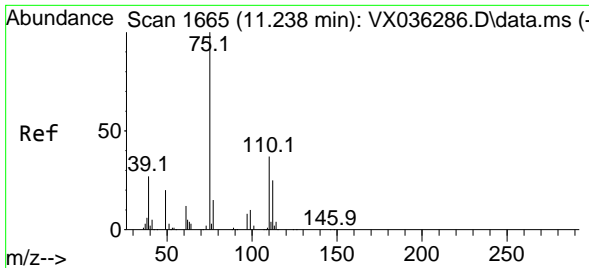
Tgt Ion:152 Resp: 401  
 Ion Ratio Lower Upper  
 152 100  
 115 42.6 43.3 129.9#  
 150 131.4 0.0 345.0



#74  
 N-amy1 acetate  
 Concen: 2.510 ug/l  
 RT: 10.817 min Scan# 1596  
 Delta R.T. -0.024 min  
 Lab File: VX036340.D  
 Acq: 26 Jun 2023 19:37

Tgt Ion: 43 Resp: 30  
 Ion Ratio Lower Upper  
 43 100  
 70 0.0 32.9 49.3#  
 55 0.0 19.3 28.9#  
 61 0.0 18.8 28.2#

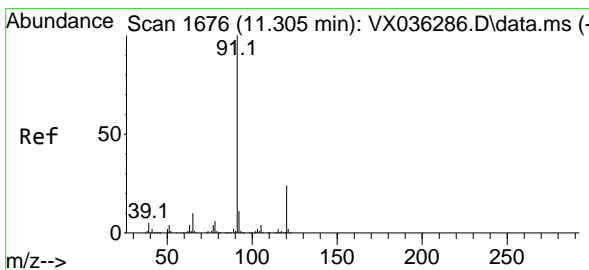
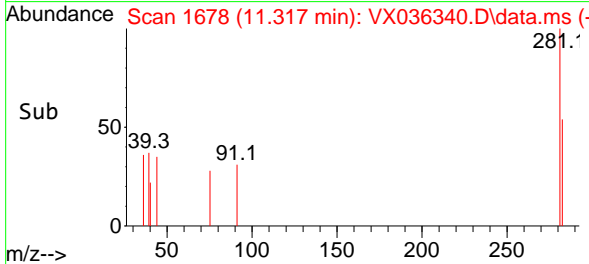
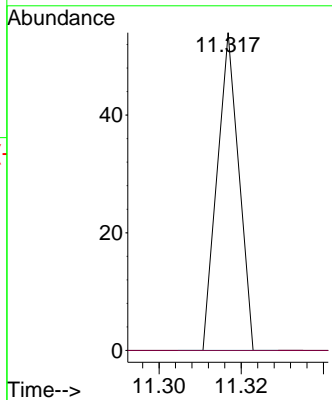
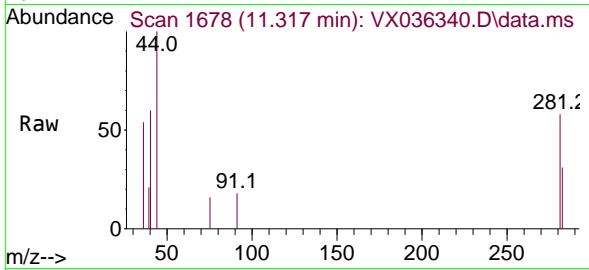




#76  
 1,2,3-Trichloropropane  
 Concen: 2.338 ug/l  
 RT: 11.317 min Scan# 1678  
 Delta R.T. 0.079 min  
 Lab File: VX036340.D  
 Acq: 26 Jun 2023 19:37

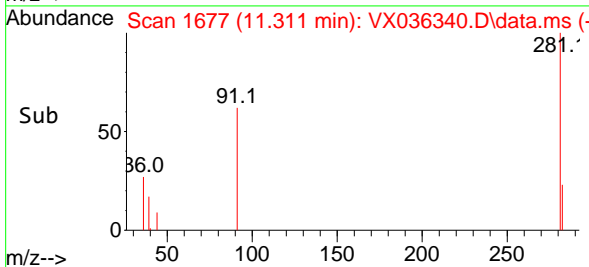
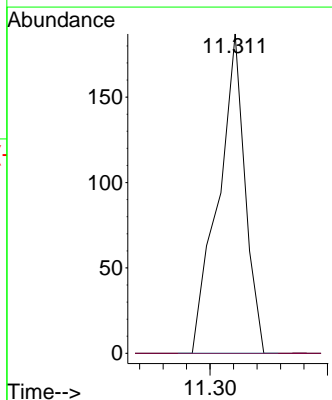
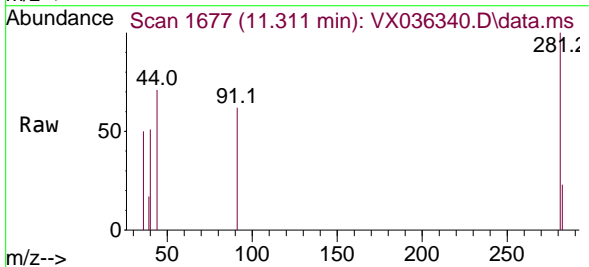
Instrument :  
 MSVOA\_X  
 ClientSampleId :

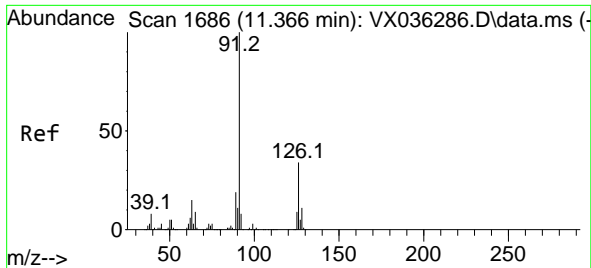
Tgt Ion: 75 Resp: 20  
 Ion Ratio Lower Upper  
 75 100  
 77 0.0 19.1 57.5#



#78  
 n-propylbenzene  
 Concen: 4.194 ug/l  
 RT: 11.311 min Scan# 1677  
 Delta R.T. 0.006 min  
 Lab File: VX036340.D  
 Acq: 26 Jun 2023 19:37

Tgt Ion: 91 Resp: 148  
 Ion Ratio Lower Upper  
 91 100  
 120 0.0 11.5 34.4#

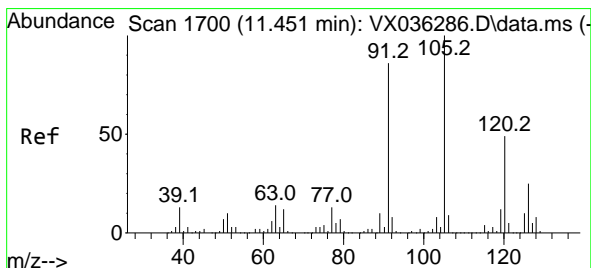
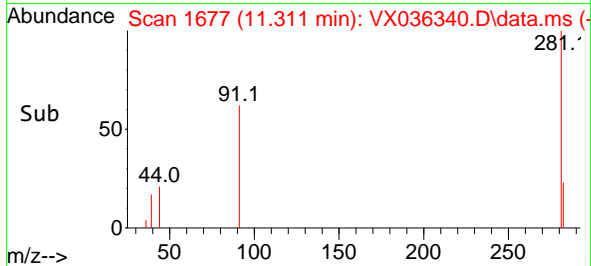
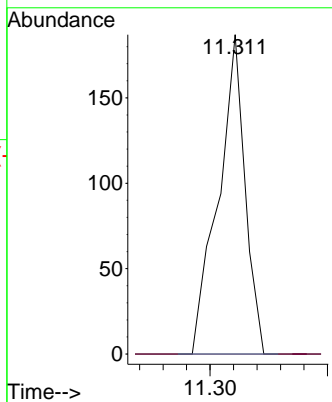
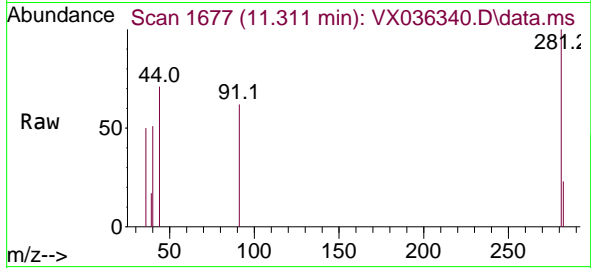




#79  
 2-Chlorotoluene  
 Concen: 7.049 ug/l  
 RT: 11.311 min Scan# 11  
 Delta R.T. -0.055 min  
 Lab File: VX036340.D  
 Acq: 26 Jun 2023 19:37

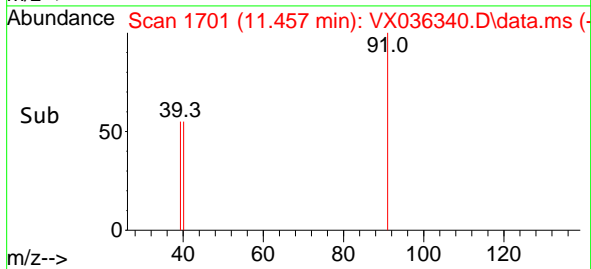
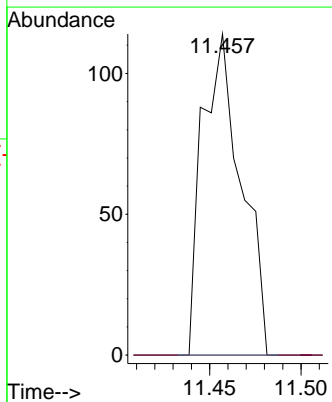
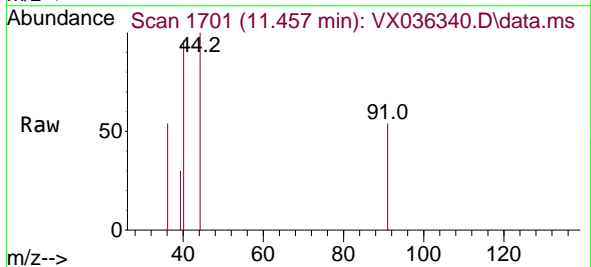
Instrument : MSVOA\_X  
 ClientSampleId :

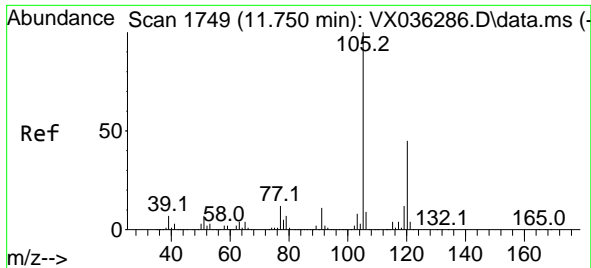
Tgt Ion: 91 Resp: 148  
 Ion Ratio Lower Upper  
 91 100  
 126 0.0 16.3 48.8#



#82  
 4-Chlorotoluene  
 Concen: 6.955 ug/l  
 RT: 11.457 min Scan# 1701  
 Delta R.T. 0.006 min  
 Lab File: VX036340.D  
 Acq: 26 Jun 2023 19:37

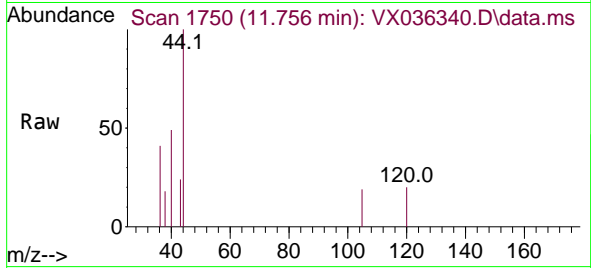
Tgt Ion: 91 Resp: 170  
 Ion Ratio Lower Upper  
 91 100  
 126 0.0 14.2 42.6#



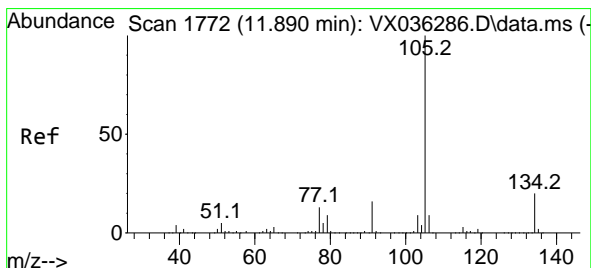
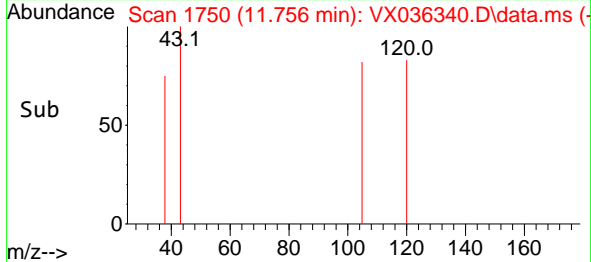
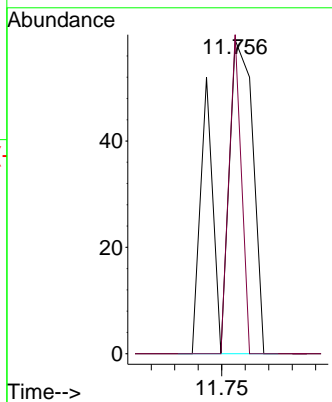


#84  
 1,2,4-Trimethylbenzene  
 Concen: 2.370 ug/l  
 RT: 11.756 min Scan# 1750  
 Delta R.T. 0.006 min  
 Lab File: VX036340.D  
 Acq: 26 Jun 2023 19:37

Instrument : MSVOA\_X  
 ClientSampleId :

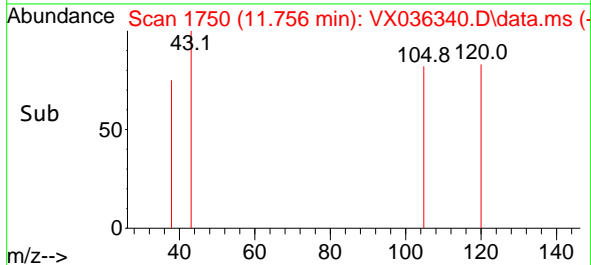
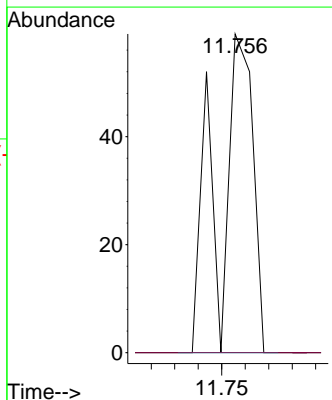
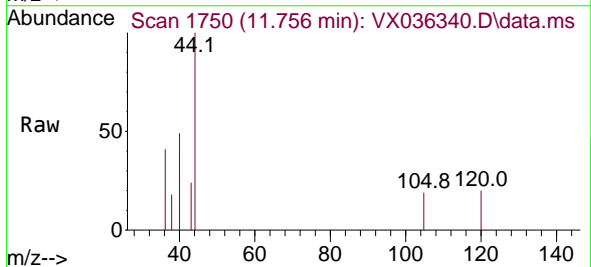


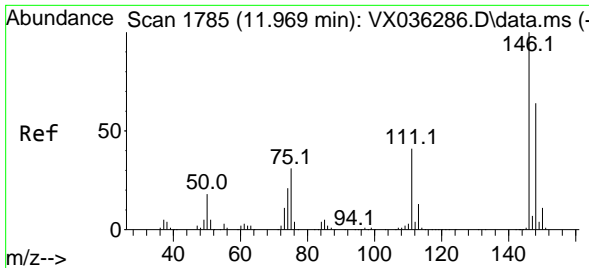
Tgt Ion:105 Resp: 60  
 Ion Ratio Lower Upper  
 105 100  
 120 36.7 21.2 63.6



#85  
 sec-Butylbenzene  
 Concen: 1.931 ug/l  
 RT: 11.756 min Scan# 1750  
 Delta R.T. -0.134 min  
 Lab File: VX036340.D  
 Acq: 26 Jun 2023 19:37

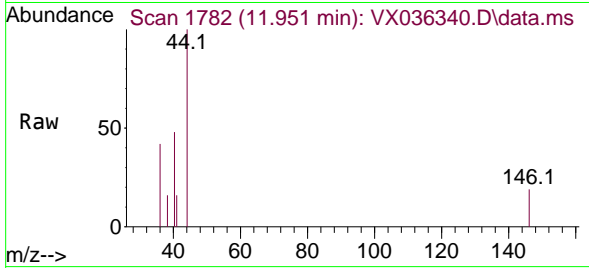
Tgt Ion:105 Resp: 60  
 Ion Ratio Lower Upper  
 105 100  
 134 0.0 9.8 29.4#



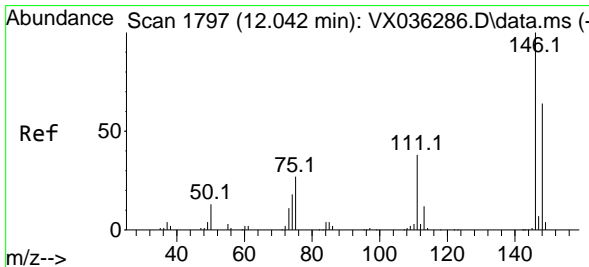
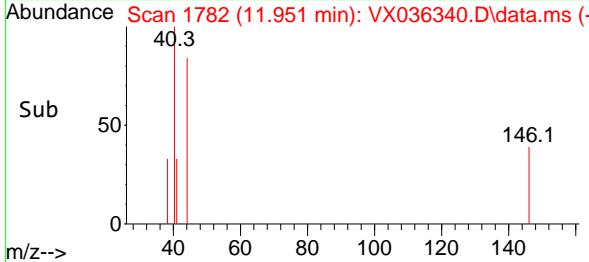
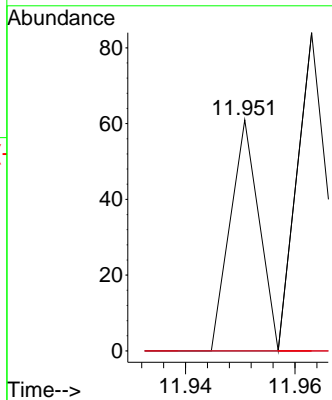


#87  
 1,3-Dichlorobenzene  
 Concen: 1.610 ug/l  
 RT: 11.951 min Scan# 1782  
 Delta R.T. -0.018 min  
 Lab File: VX036340.D  
 Acq: 26 Jun 2023 19:37

Instrument : MSVOA\_X  
 ClientSampleId :

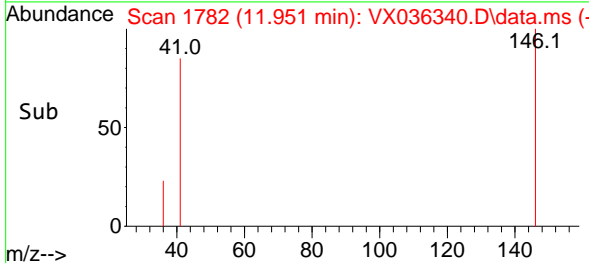
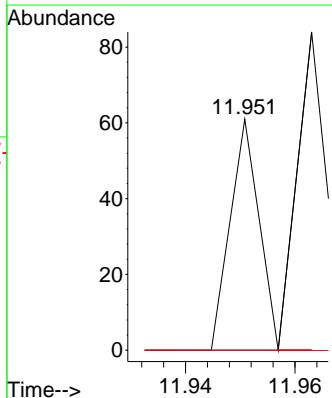
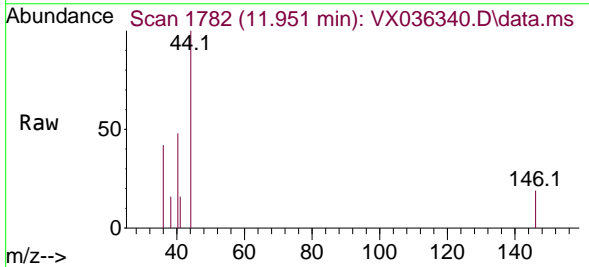


Tgt Ion:146 Resp: 22  
 Ion Ratio Lower Upper  
 146 100  
 111 0.0 22.1 66.1#  
 148 0.0 31.8 95.3#

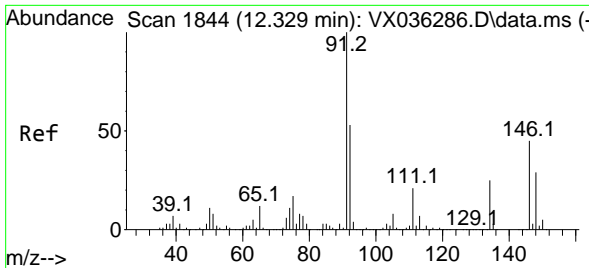


#88  
 1,4-Dichlorobenzene  
 Concen: 1.581 ug/l  
 RT: 11.951 min Scan# 1782  
 Delta R.T. -0.091 min  
 Lab File: VX036340.D  
 Acq: 26 Jun 2023 19:37

Tgt Ion:146 Resp: 22  
 Ion Ratio Lower Upper  
 146 100  
 111 0.0 21.3 63.7#  
 148 0.0 31.8 95.4#

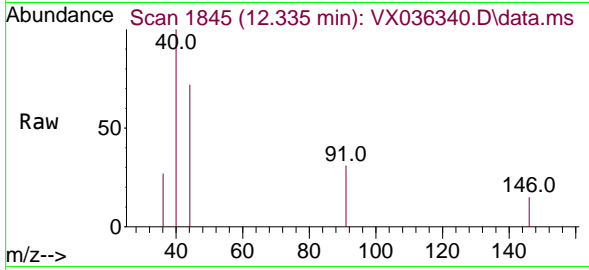






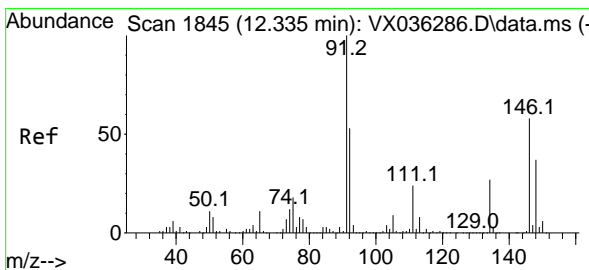
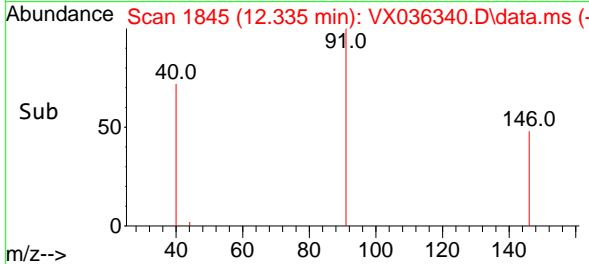
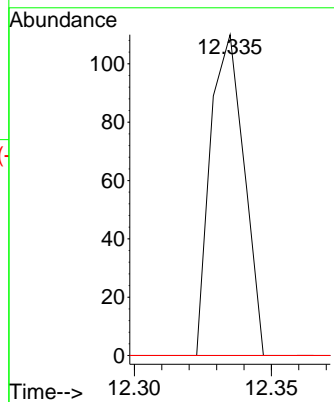
#89  
 n-Butylbenzene  
 Concen: 4.050 ug/l  
 RT: 12.335 min Scan# 1845  
 Delta R.T. 0.006 min  
 Lab File: VX036340.D  
 Acq: 26 Jun 2023 19:37

Instrument : MSVOA\_X  
 ClientSampleId :



Tgt Ion: 91 Resp: 94

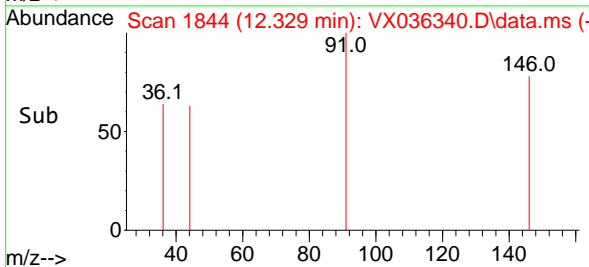
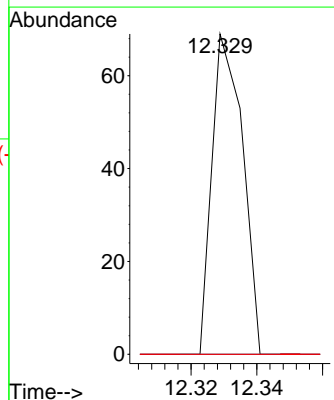
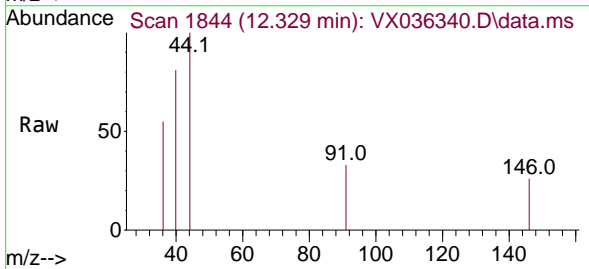
Ion	Ratio	Lower	Upper
91	100		
92	0.0	27.4	82.0#
134	0.0	12.6	37.8#

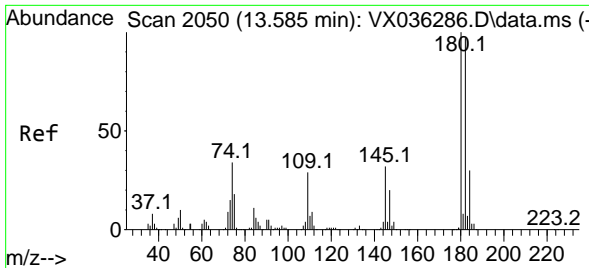


#91  
 1,2-Dichlorobenzene  
 Concen: 3.345 ug/l  
 RT: 12.329 min Scan# 1844  
 Delta R.T. -0.006 min  
 Lab File: VX036340.D  
 Acq: 26 Jun 2023 19:37

Tgt Ion: 146 Resp: 45

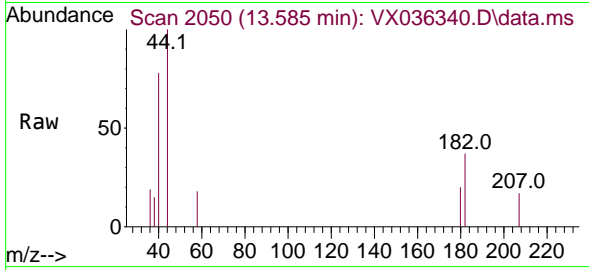
Ion	Ratio	Lower	Upper
146	100		
111	0.0	22.4	67.0#
148	0.0	31.6	95.0#





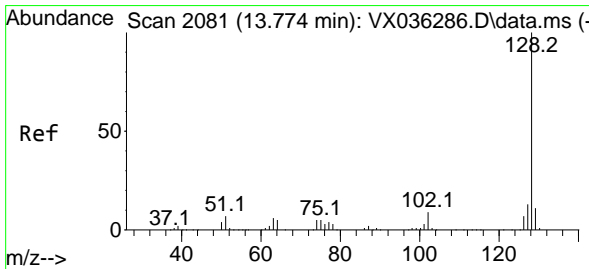
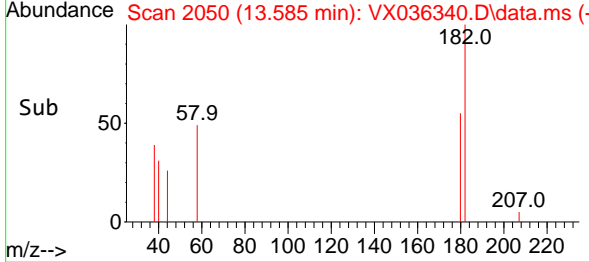
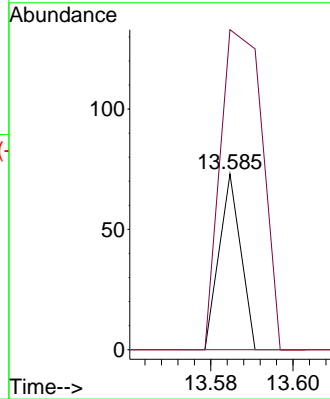
#93  
 1,2,4-Trichlorobenzene  
 Concen: 3.259 ug/l  
 RT: 13.585 min Scan# 2050  
 Delta R.T. -0.000 min  
 Lab File: VX036340.D  
 Acq: 26 Jun 2023 19:37

Instrument : MSVOA\_X  
 ClientSampleId :

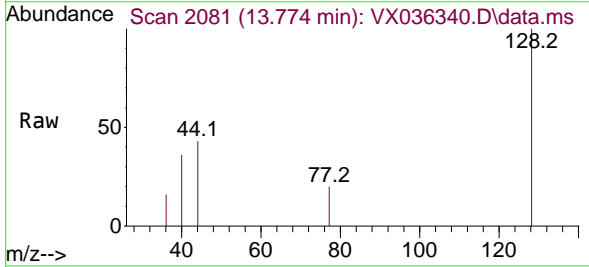


Tgt Ion:180 Resp: 27

Ion	Ratio	Lower	Upper
180	100		
182	348.1	48.3	144.8#
145	0.0	18.0	54.0#



#95  
 Naphthalene  
 Concen: 29.188 ug/l  
 RT: 13.774 min Scan# 2081  
 Delta R.T. -0.000 min  
 Lab File: VX036340.D  
 Acq: 26 Jun 2023 19:37



Tgt Ion:128 Resp: 799

Ion	Ratio	Lower	Upper
128	100		
127	0.0	10.3	15.5#
129	0.0	8.8	13.2#

