

Data Path : Z:\VOASRV\HPCHEM1\MSVOA X\DATA\VX062719\
 Data File : VX010497.D
 Acq On : 27 Jun 2019 18:27
 Operator : JC/SP
 Sample : K3565-15
 Misc : 5.0mL/MSVOA X/WATER
 ALS Vial : 23 Sample Multiplier: 1

Instrument :
 MSVOA_X
 ClientSampled :
 FL-ER-2019-1

Quant Time: Jun 28 06:50:21 2019
 Quant Method : Z:\VOASRV\HPCHEM1\MSVOA_X\METHOD\82X061919W.M
 Quant Title : SW846 8260
 QLast Update : Thu Jun 20 03:31:56 2019
 Response via : Initial Calibration

Internal Standards	R.T.	QIon	Response	Conc	Units	Dev(Min)
1) Pentafluorobenzene	5.67	168	265964	50.00	ug/l	0.00
34) 1,4-Difluorobenzene	6.86	114	410756	50.00	ug/l	0.00
63) Chlorobenzene-d5	10.11	117	367604	50.00	ug/l	0.00
72) 1,4-Dichlorobenzene-d4	12.08	152	171163	50.00	ug/l	0.00

System Monitoring Compounds

33) 1,2-Dichloroethane-d4	6.06	65	125545	50.35	ug/l	0.00
Spiked Amount	50.000		Recovery	=	100.70%	
35) Dibromofluoromethane	5.50	113	123851	49.28	ug/l	0.00
Spiked Amount	50.000		Recovery	=	98.56%	
50) Toluene-d8	8.71	98	477207	49.63	ug/l	0.00
Spiked Amount	50.000		Recovery	=	99.26%	
62) 4-Bromofluorobenzene	11.13	95	159016	45.81	ug/l	0.00
Spiked Amount	50.000		Recovery	=	91.62%	

Target Compounds

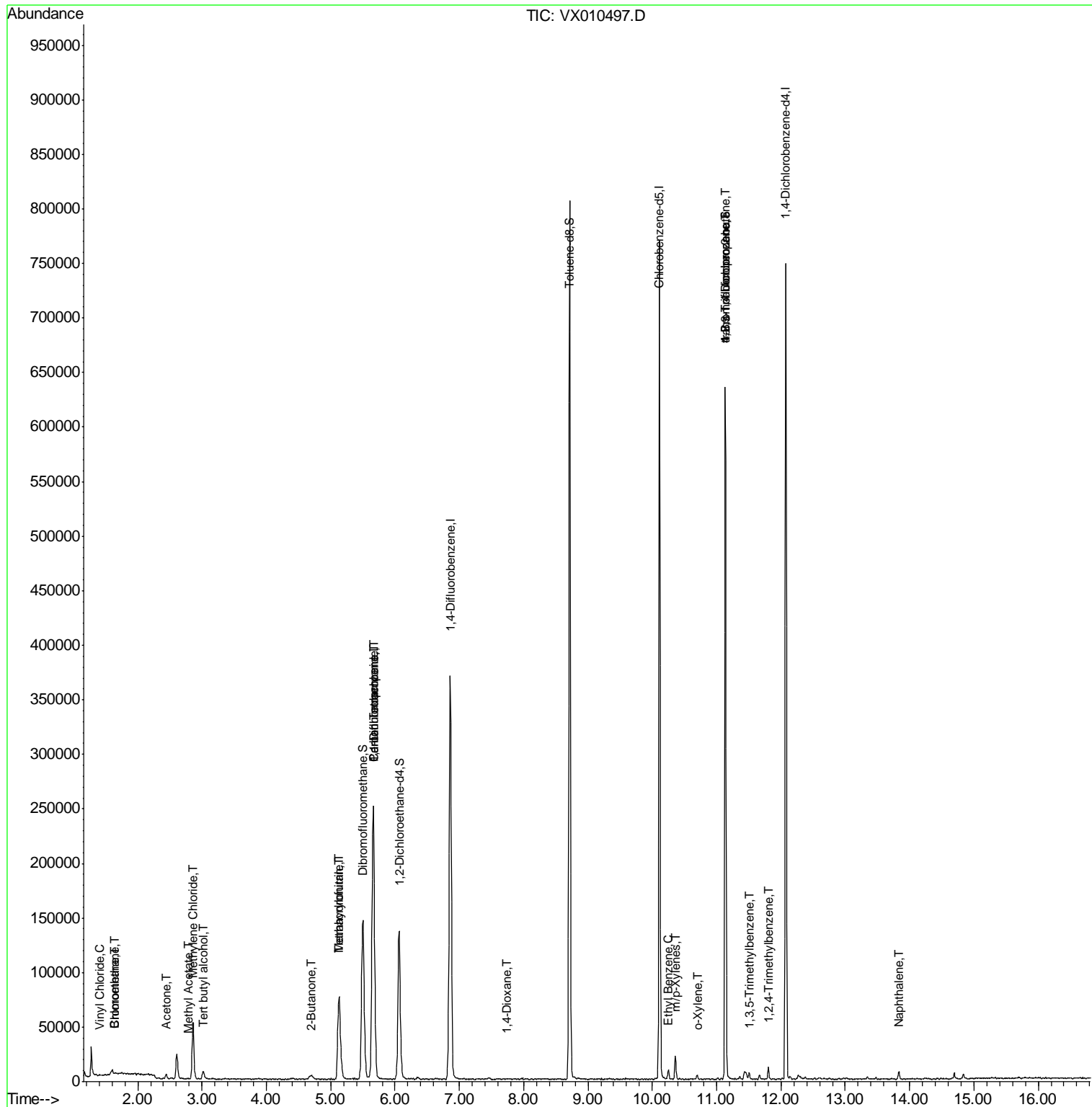
						Qvalue
4) Vinyl Chloride	1.40	62	563	0.239	ug/l #	73
5) Bromomethane	1.65	94	452	0.393	ug/l #	78
6) Chloroethane	1.65	64	479	0.344	ug/l #	41
11) Tert butyl alcohol	3.02	59	4045	6.199	ug/l #	81
16) Acetone	2.45	43	4108	3.287	ug/l	96
18) Methyl Acetate	2.79	43	651	0.261	ug/l #	69
20) Methylene Chloride	2.86	84	26191	10.183	ug/l	97
25) 2-Butanone	4.68	43	708	0.386	ug/l	94
29) Tetrahydrofuran	5.13	42	68930	60.704	ug/l	99
36) 1,1-Dichloropropene	5.66	75	16296	4.993	ug/l #	48
38) Carbon Tetrachloride	5.67	117	23653	6.692	ug/l #	16
41) Methacrylonitrile	5.13	41	37632	20.425	ug/l #	41
49) 1,4-Dioxane	7.74	88	24	0.323	ug/l #	1
67) Ethyl Benzene	10.25	91	4668	0.370	ug/l	94
68) m/p-Xylenes	10.36	106	5356	1.097	ug/l	99
69) o-Xylene	10.70	106	1112	0.232	ug/l	87
76) 1,2,3-Trichloropropane	11.13	75	75801	24.303	ug/l #	33
80) 1,3,5-Trimethylbenzene	11.51	105	2394	0.250	ug/l	96
81) trans-1,4-Dichloro-2-buten	11.13	75	75801	56.696	ug/l #	16
84) 1,2,4-Trimethylbenzene	11.80	105	5080	0.529	ug/l	98
95) Naphthalene	13.83	128	4426	0.370	ug/l #	93

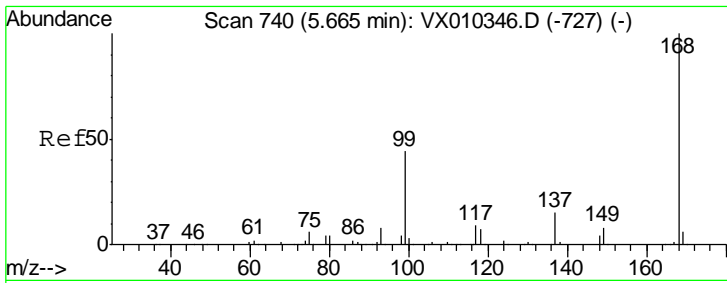
(#) = qualifier out of range (m) = manual integration (+) = signals summed

Data Path : Z:\VOASRV\HPCHEM1\MSVOA X\DATA\VX062719\
 Data File : VX010497.D
 Acq On : 27 Jun 2019 18:27
 Operator : JC/SP
 Sample : K3565-15
 Misc : 5.0mL/MSVOA X/WATER
 ALS Vial : 23 Sample Multiplier: 1

Instrument :
 MSVOA_X
 Client Sampled :
 FL-ER-2019-1

Quant Time: Jun 28 06:50:21 2019
 Quant Method : Z:\VOASRV\HPCHEM1\MSVOA_X\METHOD\82X061919W.M
 Quant Title : SW846 8260
 QLast Update : Thu Jun 20 03:31:56 2019
 Response via : Initial Calibration

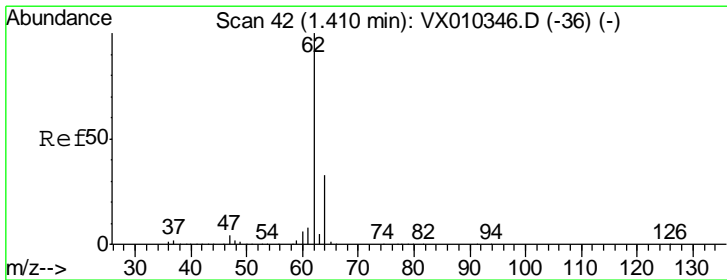
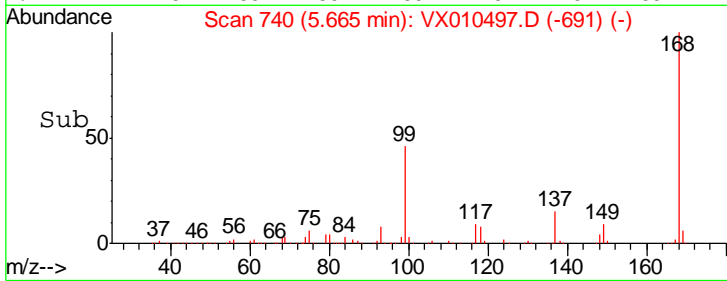
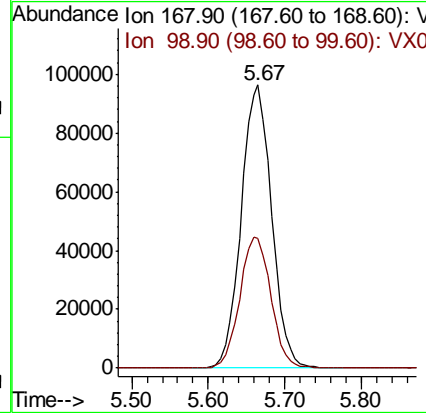
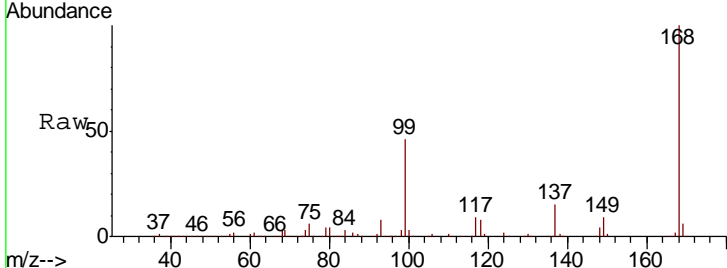




#1
 Pentafluorobenzene
 Concen: 50.000 ug/l
 RT: 5.67 min Scan# 740
 Delta R.T. 0.00 min
 Lab File: VX010497.D
 Acq: 27 Jun 2019 18:27

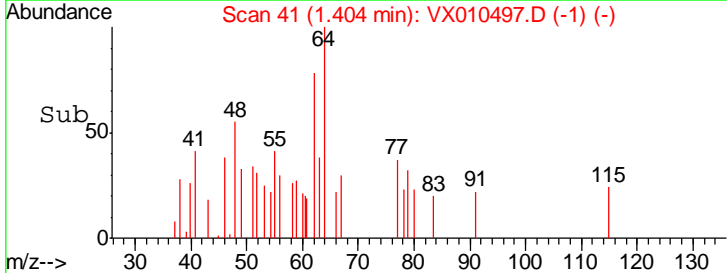
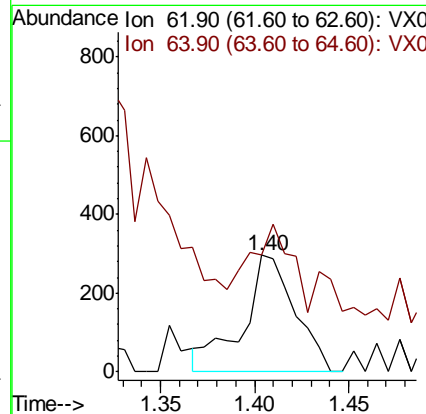
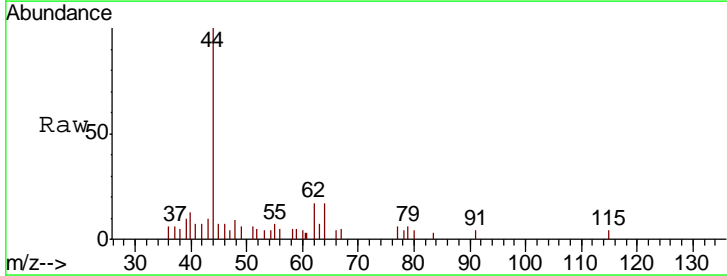
Instrument : MSVOA_X
 ClientSampled : FL-ER-2019-1

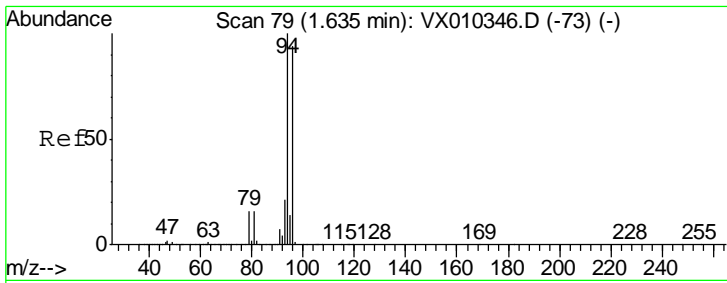
Tgt Ion	Resp	Lower	Upper
168	100		
99	45.8	35.5	53.3



#4
 Vinyl Chloride
 Concen: 0.239 ug/l
 RT: 1.40 min Scan# 41
 Delta R.T. -0.01 min
 Lab File: VX010497.D
 Acq: 27 Jun 2019 18:27

Tgt Ion	Resp	Lower	Upper
62	100		
64	48.0	26.2	39.4#

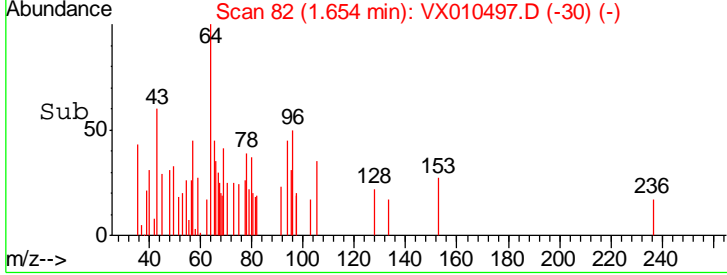
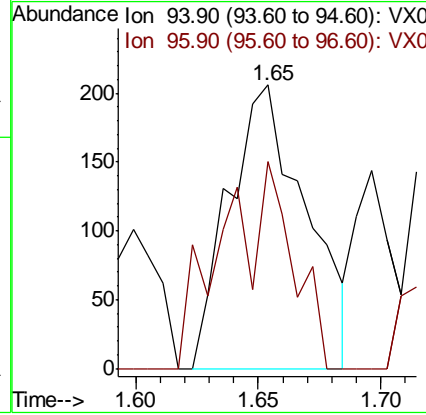
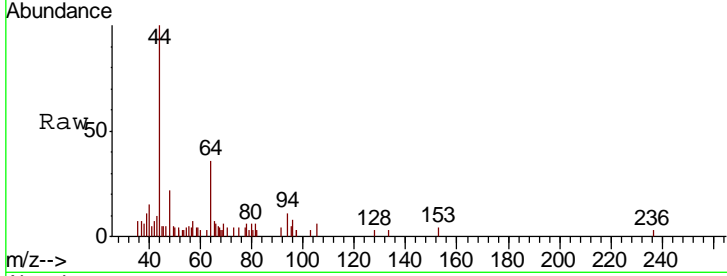




#5
 Bromomethane
 Concen: 0.393 ug/l
 RT: 1.65 min Scan# 82
 Delta R.T. 0.02 min
 Lab File: VX010497.D
 Acq: 27 Jun 2019 18:27

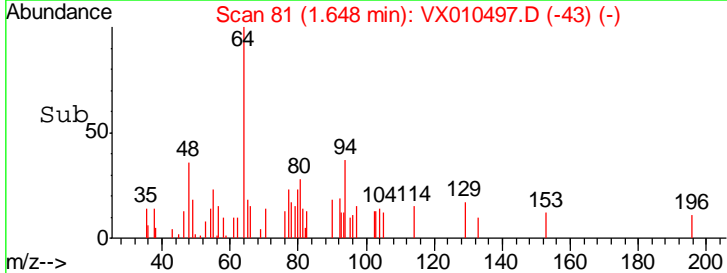
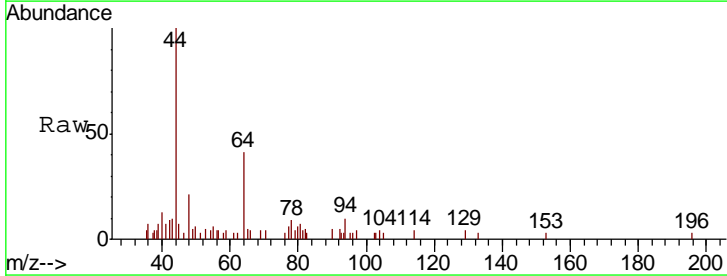
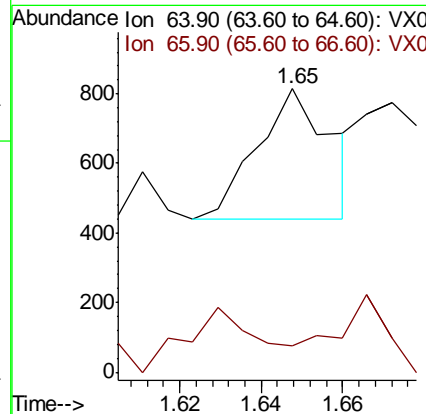
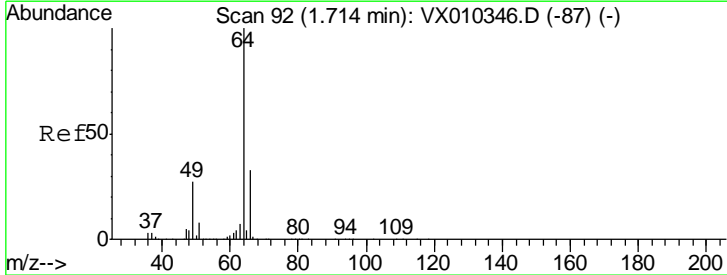
Instrument :
 MSVOA_X
ClientSampled :
 FL-ER-2019-1

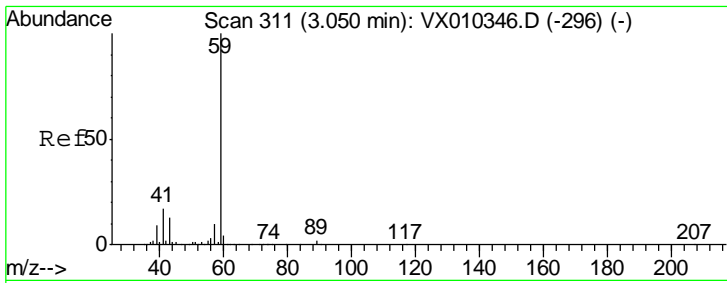
Tgt Ion: 94 Resp: 452
 Ion Ratio Lower Upper
 94 100
 96 72.8 75.5 113.3#



#6
 Chloroethane
 Concen: 0.344 ug/l
 RT: 1.65 min Scan# 81
 Delta R.T. -0.07 min
 Lab File: VX010497.D
 Acq: 27 Jun 2019 18:27

Tgt Ion: 64 Resp: 479
 Ion Ratio Lower Upper
 64 100
 66 0.0 26.6 40.0#

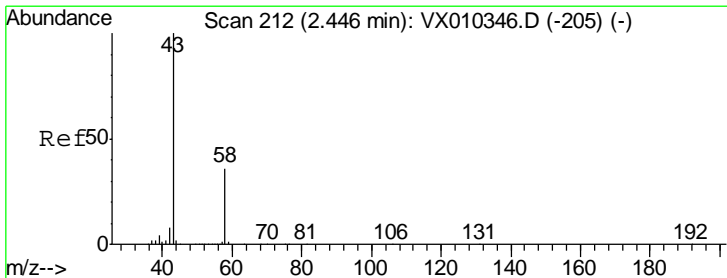
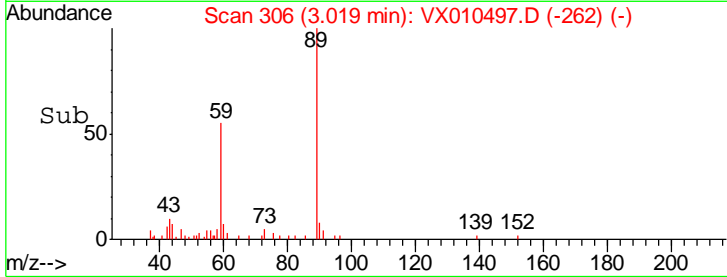
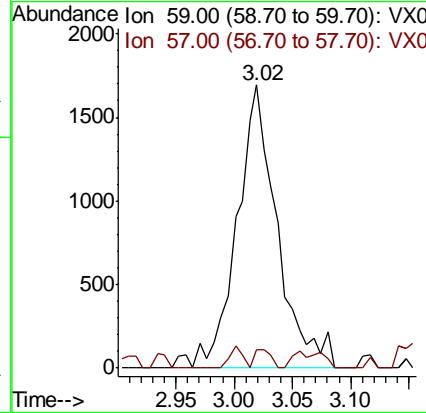
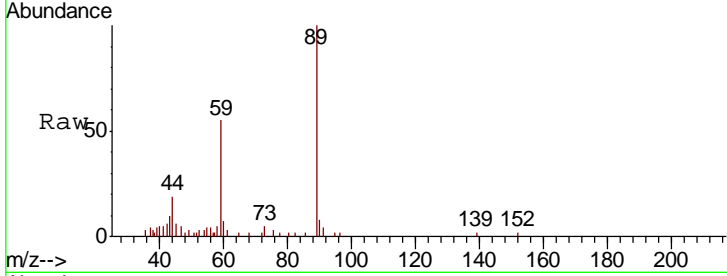




#11
 Tert butyl alcohol
 Concen: 6.199 ug/l
 RT: 3.02 min Scan# 306
 Delta R.T. -0.03 min
 Lab File: VX010497.D
 Acq: 27 Jun 2019 18:27

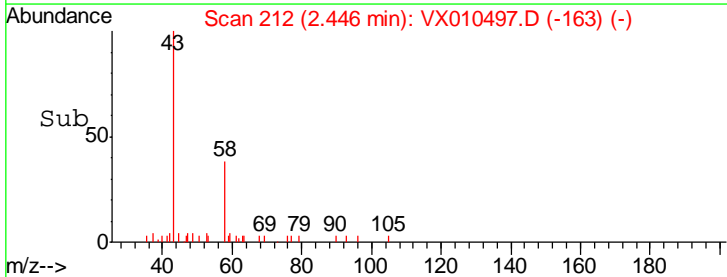
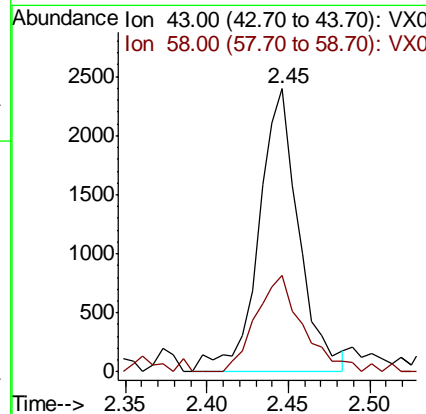
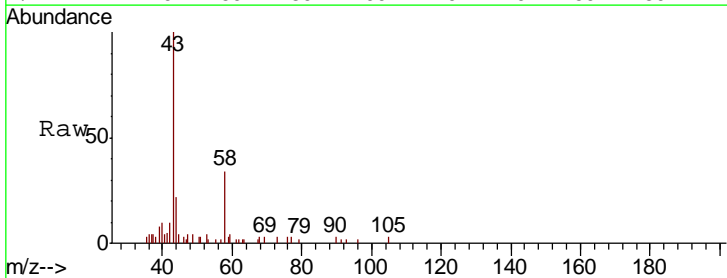
Instrument :
 MSVOA_X
 ClientSampled :
 FL-ER-2019-1

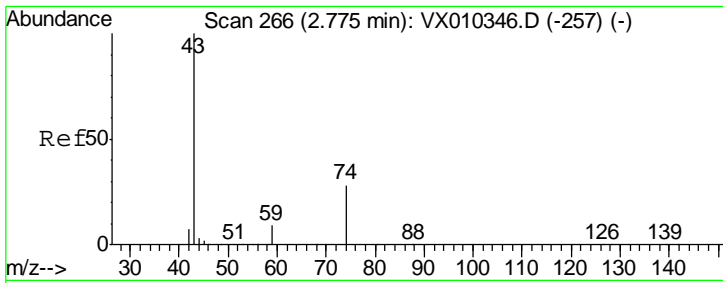
Tgt Ion: 59 Resp: 4045
 Ion Ratio Lower Upper
 59 100
 57 2.7 7.7 11.5#



#16
 Acetone
 Concen: 3.287 ug/l
 RT: 2.45 min Scan# 212
 Delta R.T. 0.00 min
 Lab File: VX010497.D
 Acq: 27 Jun 2019 18:27

Tgt Ion: 43 Resp: 4108
 Ion Ratio Lower Upper
 43 100
 58 33.9 28.9 43.3

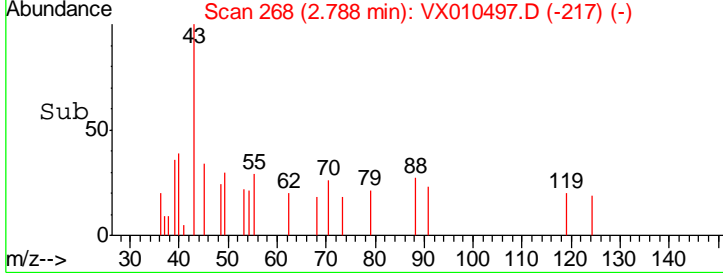
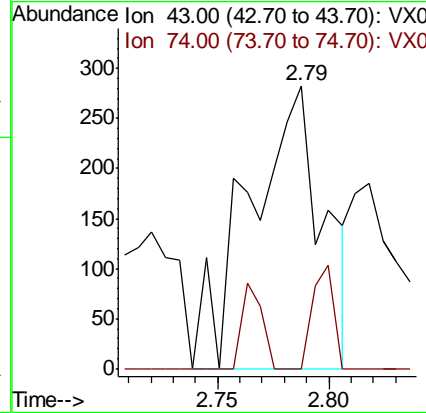
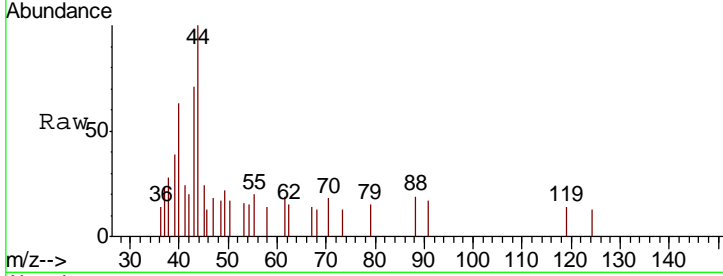




#18
 Methyl Acetate
 Concen: 0.261 ug/l
 RT: 2.79 min Scan# 268
 Delta R.T. 0.01 min
 Lab File: VX010497.D
 Acq: 27 Jun 2019 18:27

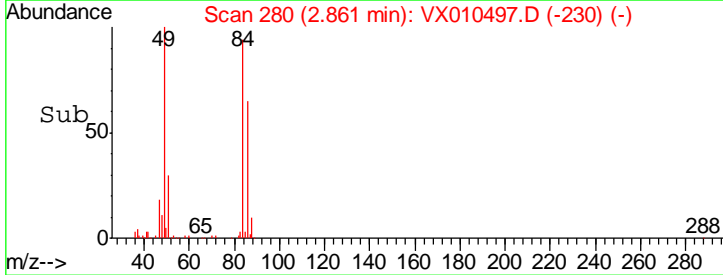
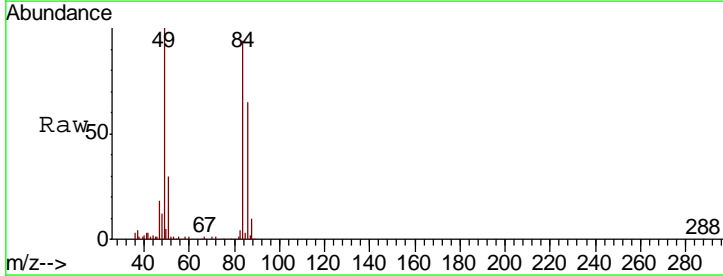
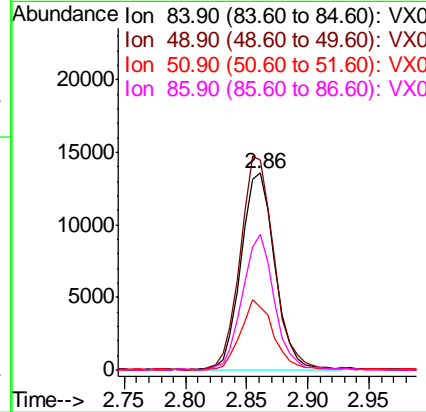
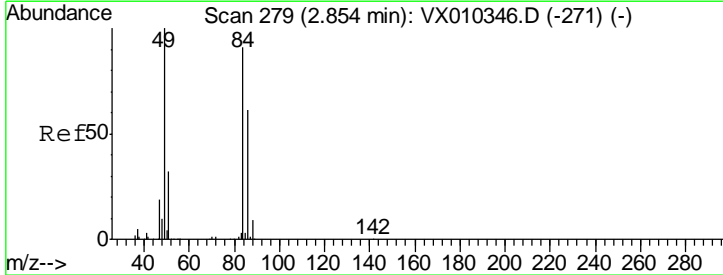
Instrument :
 MSVOA_X
 ClientSampled :
 FL-ER-2019-1

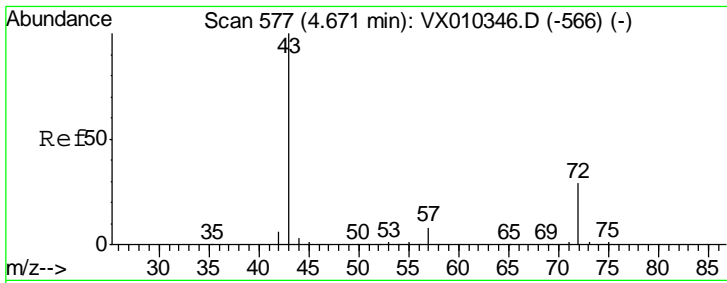
Tgt Ion	Resp	Lower	Upper
43	651		
74	10.4	21.3	31.9#



#20
 Methylene Chloride
 Concen: 10.183 ug/l
 RT: 2.86 min Scan# 280
 Delta R.T. 0.01 min
 Lab File: VX010497.D
 Acq: 27 Jun 2019 18:27

Tgt Ion	Resp	Lower	Upper
84	26191		
49	105.9	87.5	131.3
51	31.8	27.7	41.5
86	69.1	53.4	80.0



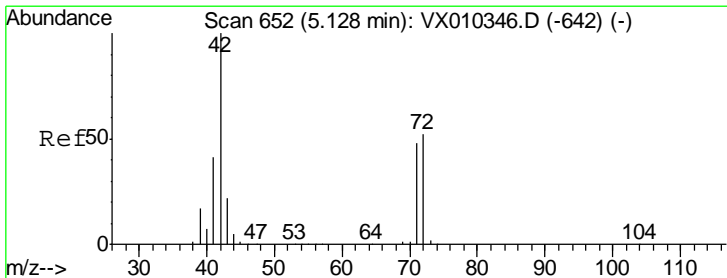
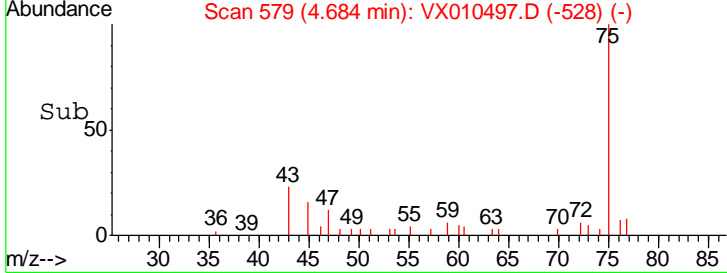
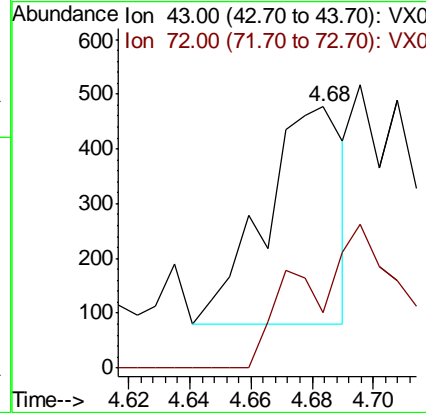
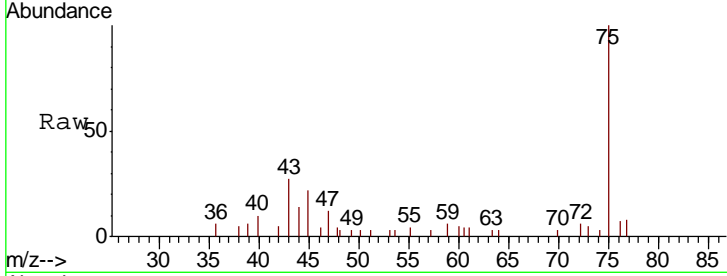


#25
 2-Butanone
 Concen: 0.386 ug/l
 RT: 4.68 min Scan# 579
 Delta R.T. 0.01 min
 Lab File: VX010497.D
 Acq: 27 Jun 2019 18:27

Instrument :
 MSVOA_X
ClientSampled :
 FL-ER-2019-1

Tgt Ion: 43 Resp: 708

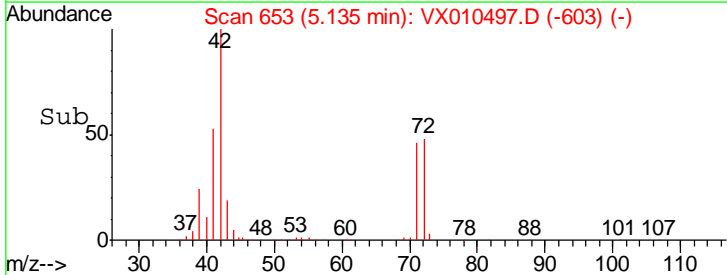
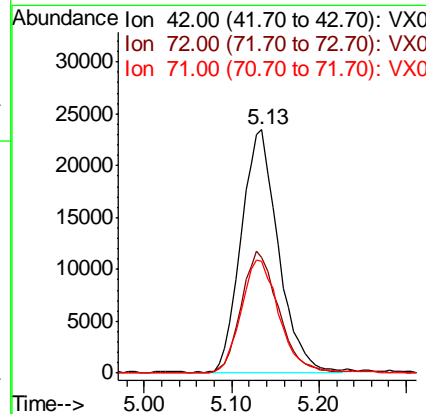
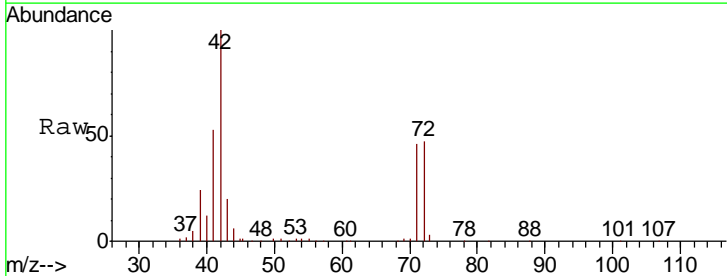
Ion	Ratio	Lower	Upper
43	100		
72	25.7	23.3	34.9

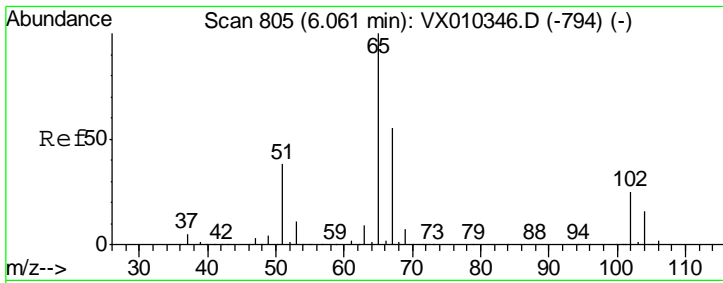


#29
 Tetrahydrofuran
 Concen: 60.704 ug/l
 RT: 5.13 min Scan# 653
 Delta R.T. 0.01 min
 Lab File: VX010497.D
 Acq: 27 Jun 2019 18:27

Tgt Ion: 42 Resp: 68930

Ion	Ratio	Lower	Upper
42	100		
72	50.5	40.6	60.8
71	47.9	37.8	56.8

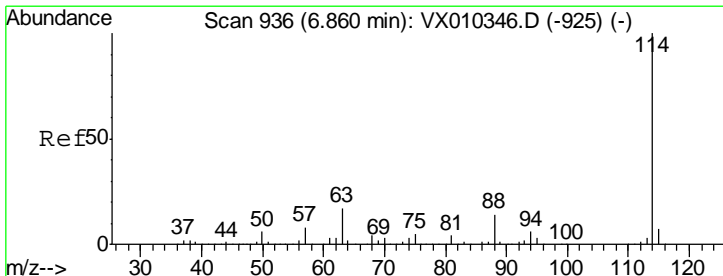
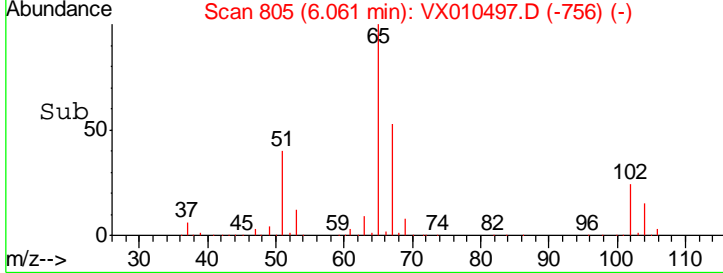
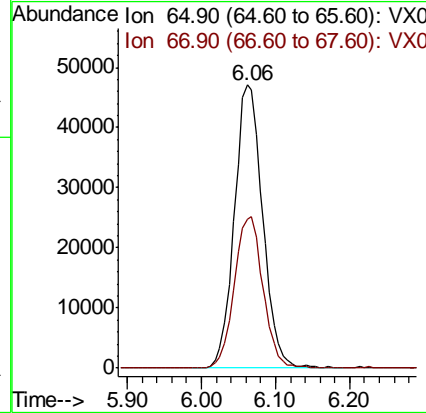
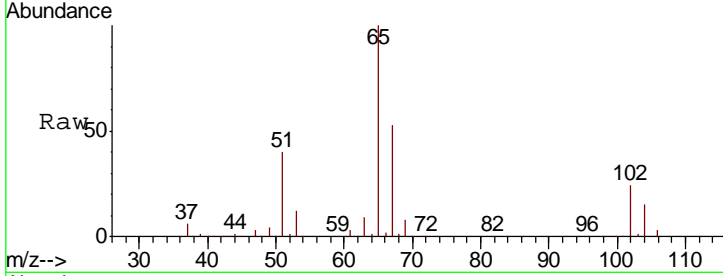




#33
 1,2-Dichloroethane-d4
 Concen: 50.345 ug/l
 RT: 6.06 min Scan# 805
 Delta R.T. 0.00 min
 Lab File: VX010497.D
 Acq: 27 Jun 2019 18:27

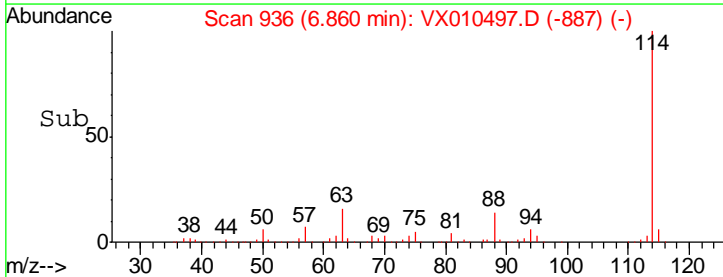
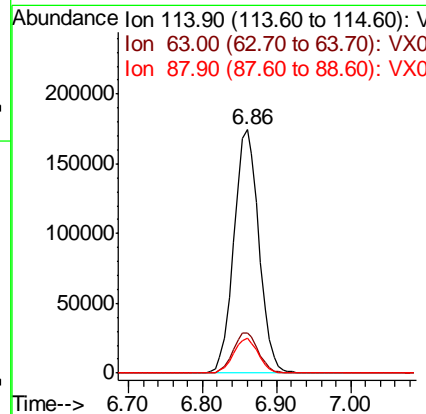
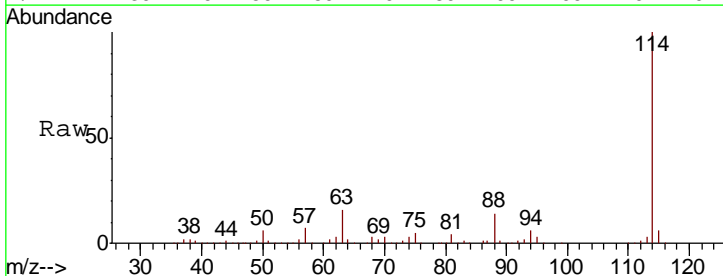
Instrument : MSVOA_X
 ClientSampled : FL-ER-2019-1

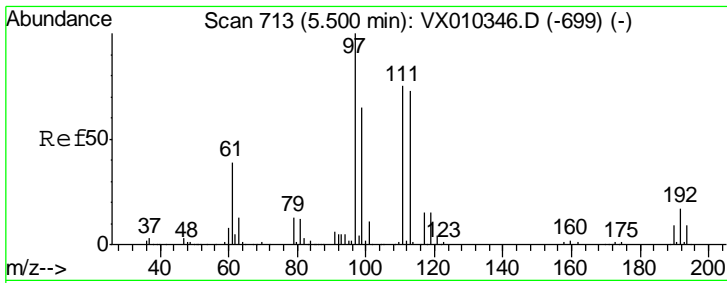
Tgt Ion	Resp	Lower	Upper
65	125545		
67	54.1	0.0	110.2



#34
 1,4-Difluorobenzene
 Concen: 50.000 ug/l
 RT: 6.86 min Scan# 936
 Delta R.T. 0.00 min
 Lab File: VX010497.D
 Acq: 27 Jun 2019 18:27

Tgt Ion	Resp	Lower	Upper
114	410756		
63	16.4	0.0	33.8
88	14.4	0.0	27.6

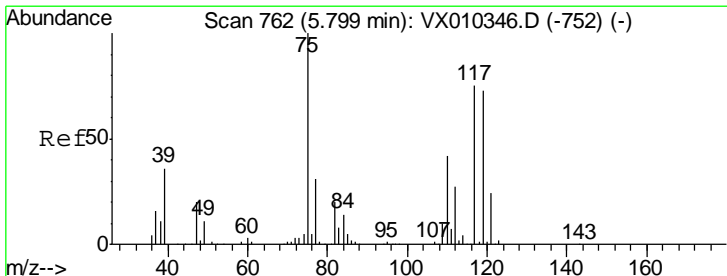
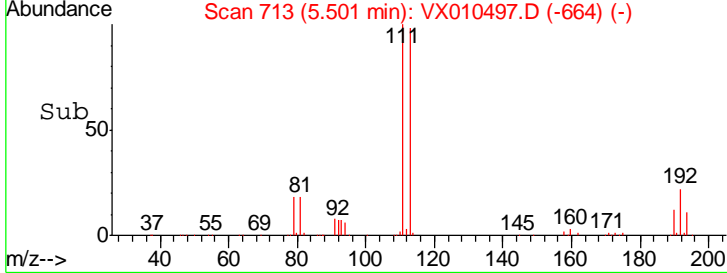
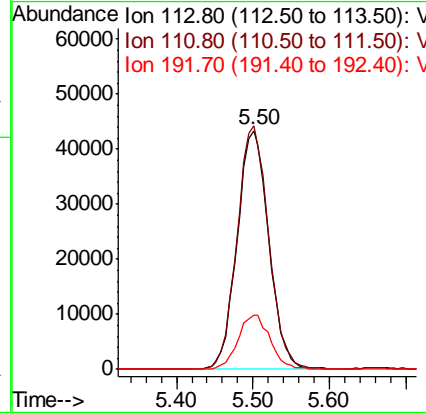
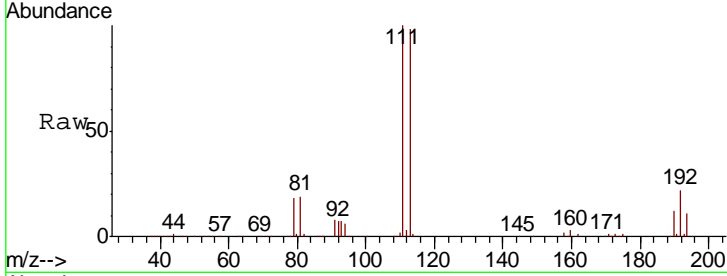




#35
 Dibromofluoromethane
 Concen: 49.281 ug/l
 RT: 5.50 min Scan# 713
 Delta R.T. 0.00 min
 Lab File: VX010497.D
 Acq: 27 Jun 2019 18:27

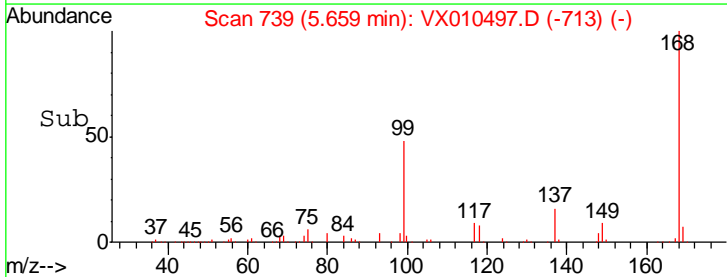
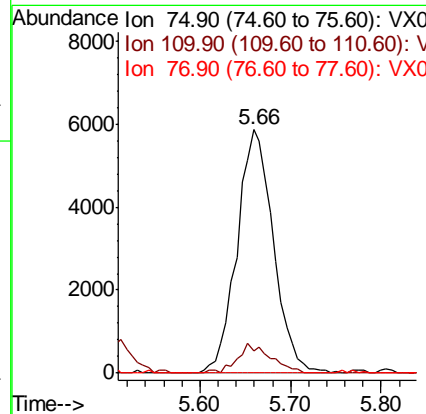
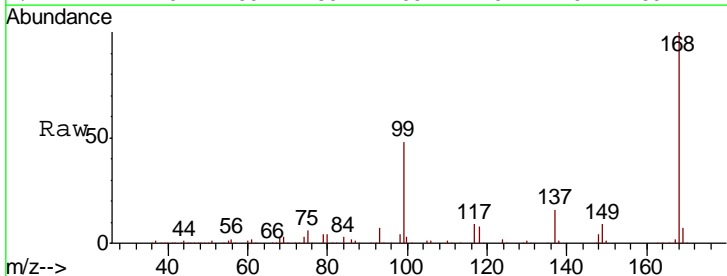
Instrument : MSVOA_X
 ClientSampled : FL-ER-2019-1

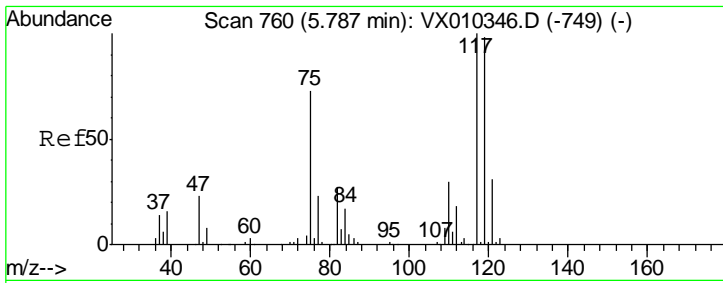
Tgt Ion	Resp	Lower	Upper
113	123851		
113	100		
111	102.2	81.2	121.8
192	23.1	18.6	27.8



#36
 1,1-Dichloropropene
 Concen: 4.993 ug/l
 RT: 5.66 min Scan# 739
 Delta R.T. -0.14 min
 Lab File: VX010497.D
 Acq: 27 Jun 2019 18:27

Tgt Ion	Resp	Lower	Upper
75	16296		
75	100		
110	11.0	20.8	62.2#
77	0.0	25.4	38.0#

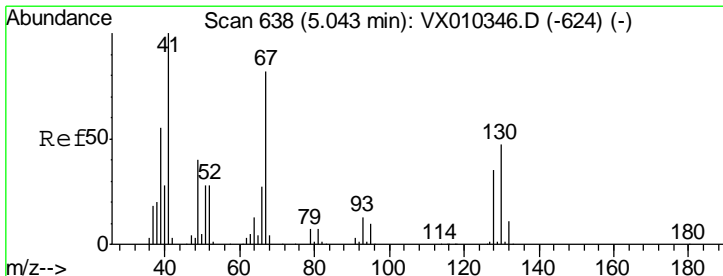
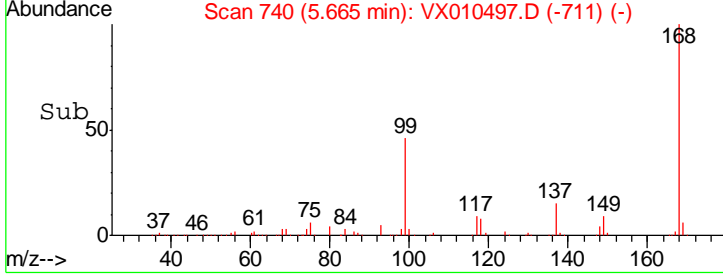
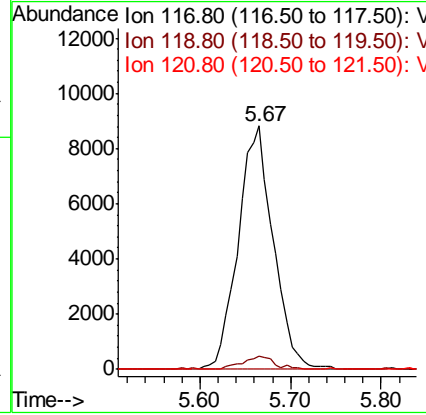
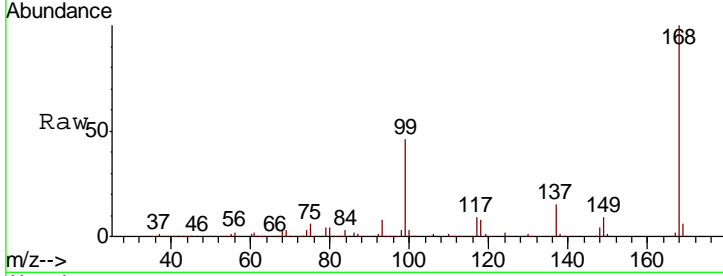




#38
 Carbon Tetrachloride
 Concen: 6.692 ug/l
 RT: 5.67 min Scan# 740
 Delta R.T. -0.12 min
 Lab File: VX010497.D
 Acq: 27 Jun 2019 18:27

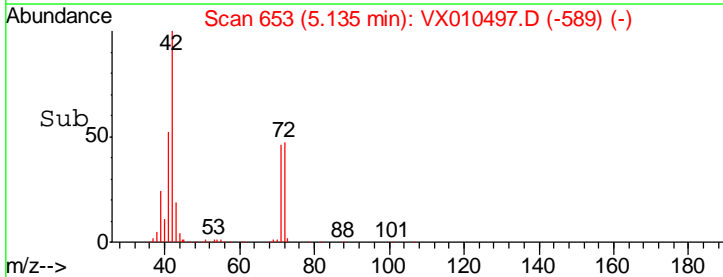
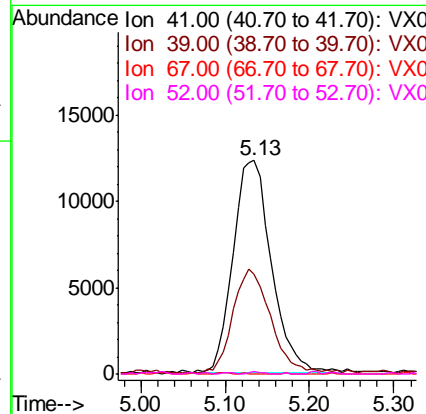
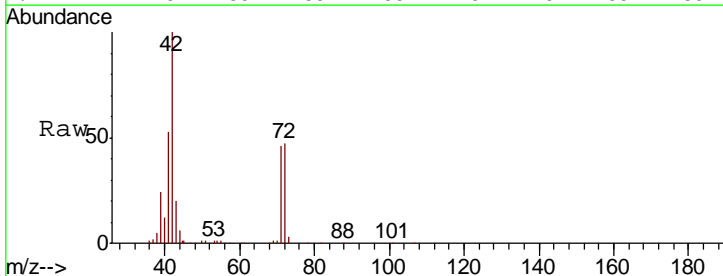
Instrument : MSVOA_X
 ClientSampleId : FL-ER-2019-1

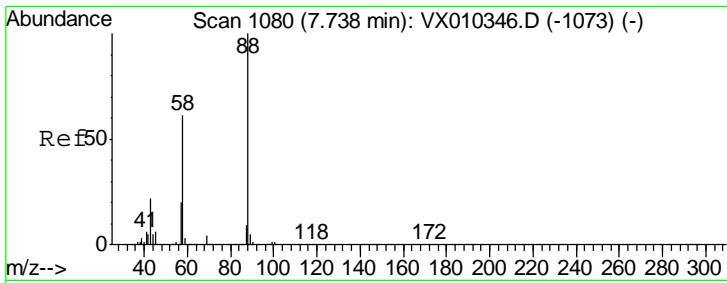
Tgt Ion	Resp	Lower	Upper
117	100		
119	5.6	78.2	117.4#
121	0.0	24.7	37.1#



#41
 Methacrylonitrile
 Concen: 20.425 ug/l
 RT: 5.13 min Scan# 653
 Delta R.T. 0.09 min
 Lab File: VX010497.D
 Acq: 27 Jun 2019 18:27

Tgt Ion	Resp	Lower	Upper
41	100		
39	47.7	43.8	65.8
67	0.1	66.6	100.0#
52	0.4	24.5	36.7#

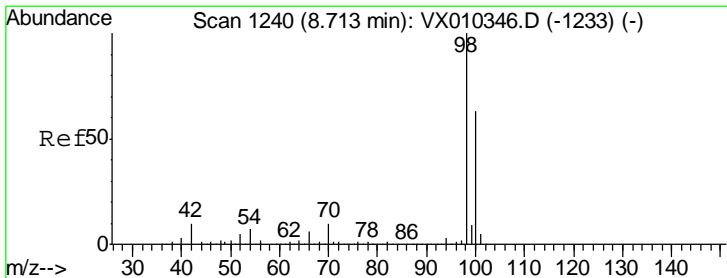
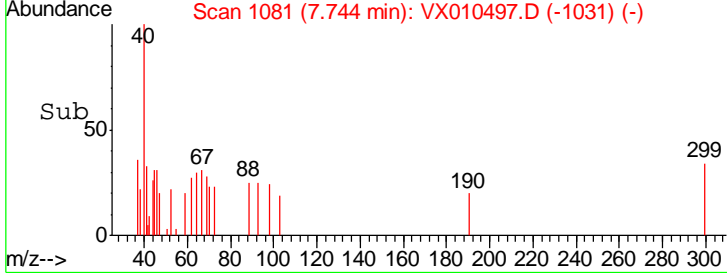
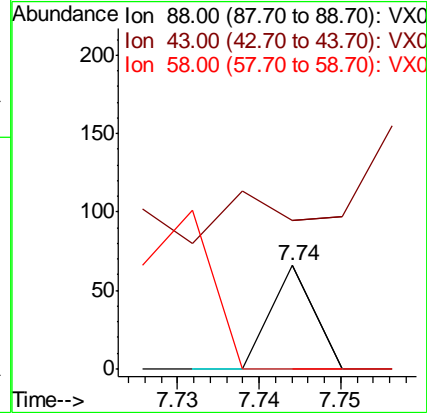
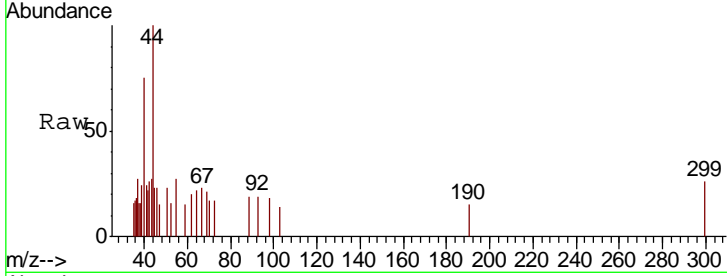




#49
 1,4-Dioxane
 Concen: 0.323 ug/l
 RT: 7.74 min Scan# 1081
 Delta R.T. 0.01 min
 Lab File: VX010497.D
 Acq: 27 Jun 2019 18:27

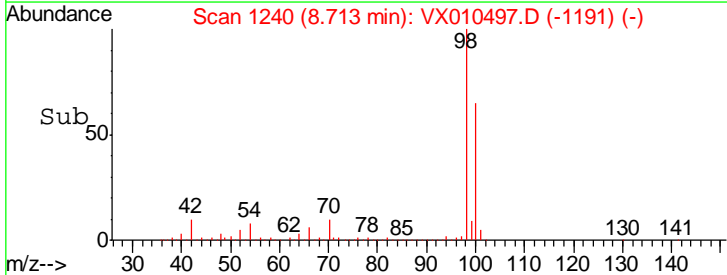
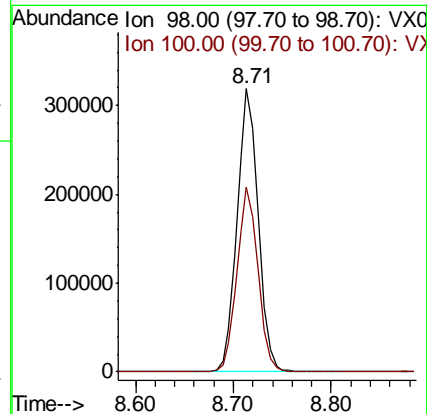
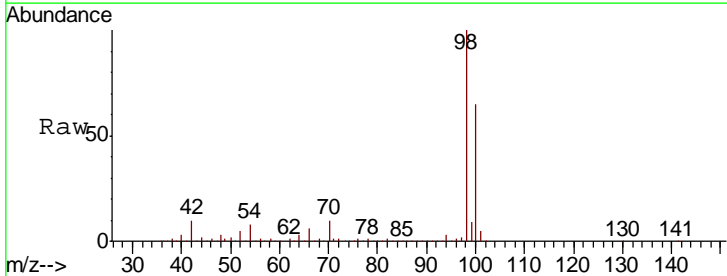
Instrument :
 MSVOA_X
 ClientSampled :
 FL-ER-2019-1

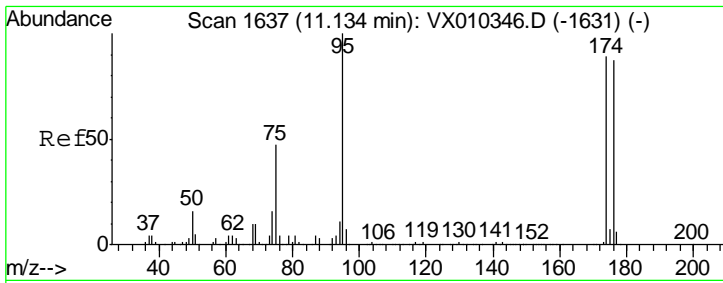
Tgt Ion	Resp	Lower	Upper
88	100		
43	0.0	20.2	30.2#
58	254.2	49.5	74.3#



#50
 Toluene-d8
 Concen: 49.632 ug/l
 RT: 8.71 min Scan# 1240
 Delta R.T. 0.00 min
 Lab File: VX010497.D
 Acq: 27 Jun 2019 18:27

Tgt Ion	Resp	Lower	Upper
98	100		
100	65.1	51.6	77.4

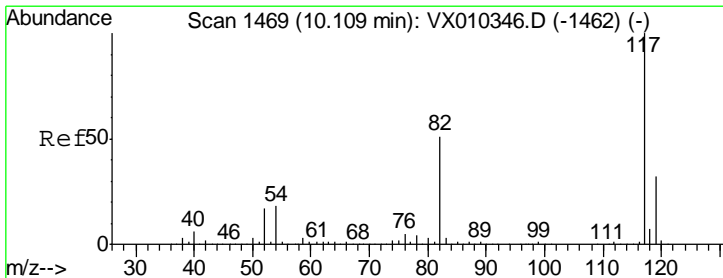
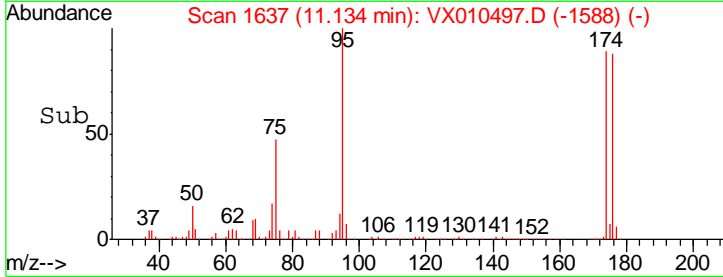
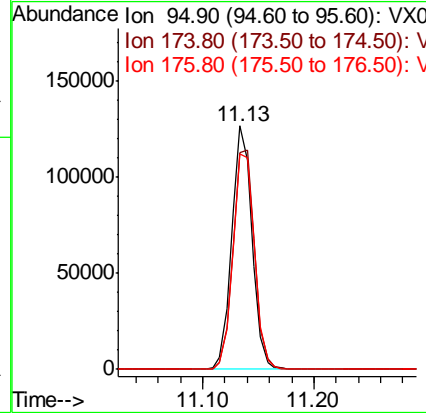
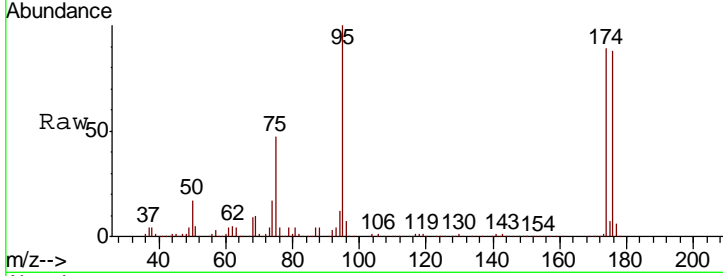




#62
 4-Bromofluorobenzene
 Concen: 45.810 ug/l
 RT: 11.13 min Scan# 1637
 Delta R.T. 0.00 min
 Lab File: VX010497.D
 Acq: 27 Jun 2019 18:27

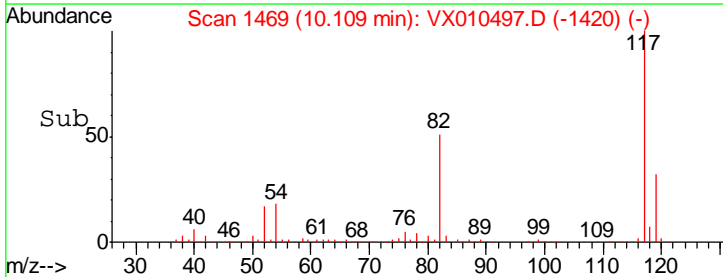
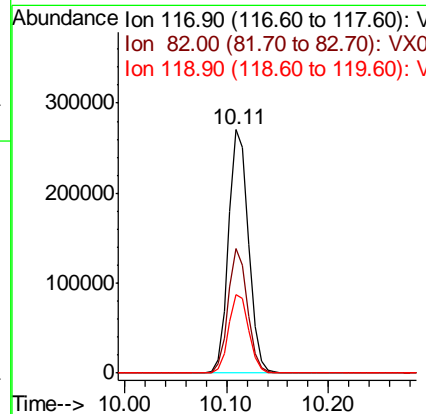
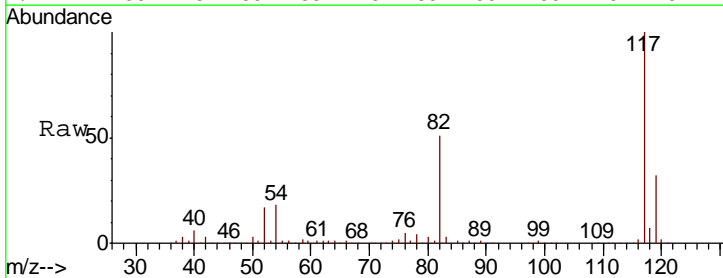
Instrument :
 MSVOA_X
 ClientSampled :
 FL-ER-2019-1

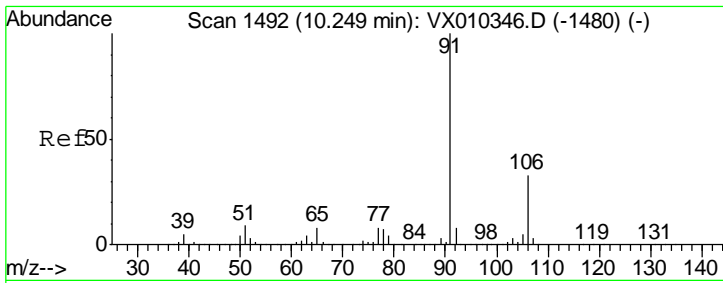
Tgt Ion	Resp	Lower	Upper
95	159016		
174	95.6	0.0	187.6
176	94.1	0.0	184.0



#63
 Chlorobenzene-d5
 Concen: 50.000 ug/l
 RT: 10.11 min Scan# 1469
 Delta R.T. 0.00 min
 Lab File: VX010497.D
 Acq: 27 Jun 2019 18:27

Tgt Ion	Resp	Lower	Upper
117	367604		
82	51.0	41.2	61.8
119	32.4	25.5	38.3

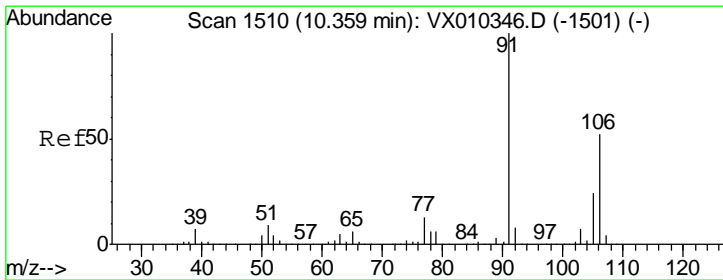
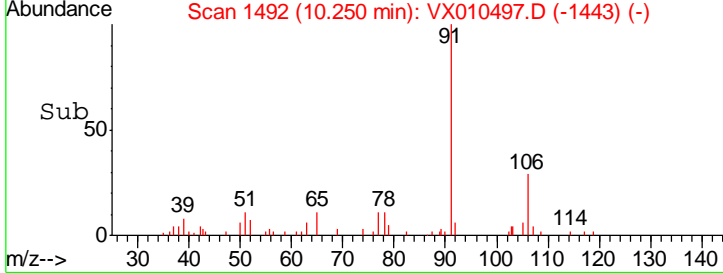
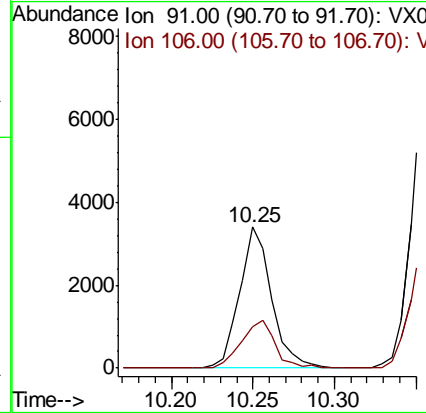
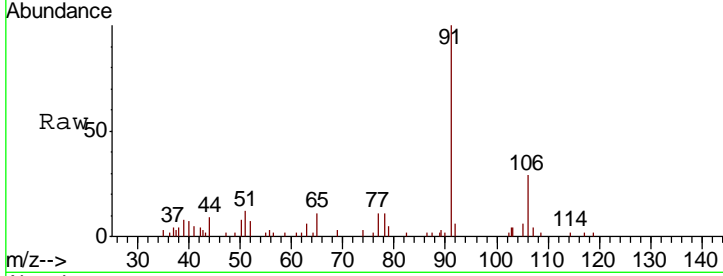




#67
 Ethyl Benzene
 Concen: 0.370 ug/l
 RT: 10.25 min Scan# 1492
 Delta R.T. 0.00 min
 Lab File: VX010497.D
 Acq: 27 Jun 2019 18:27

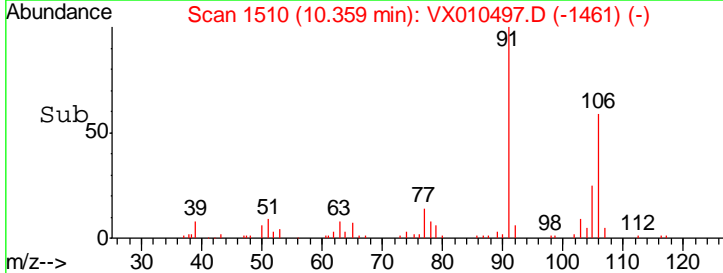
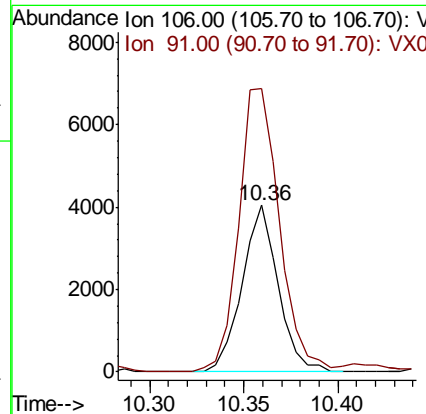
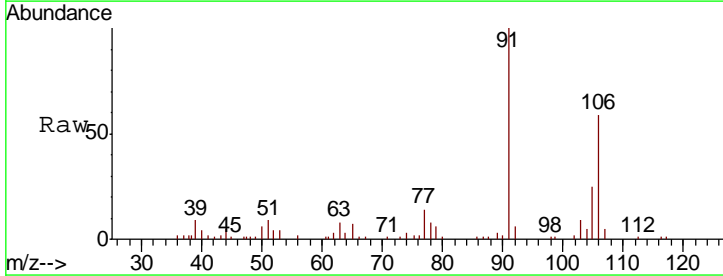
Instrument : MSVOA_X
 ClientSampled : FL-ER-2019-1

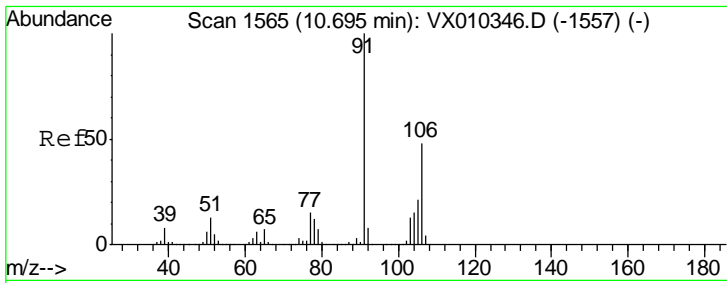
Tot Ion: 91	Resp: 4668
Ion Ratio	Lower Upper
91	100
106	29.3 26.2 39.2



#68
 m/p-Xylenes
 Concen: 1.097 ug/l
 RT: 10.36 min Scan# 1510
 Delta R.T. 0.00 min
 Lab File: VX010497.D
 Acq: 27 Jun 2019 18:27

Tgt Ion: 106	Resp: 5356
Ion Ratio	Lower Upper
106	100
91	192.8 155.3 232.9

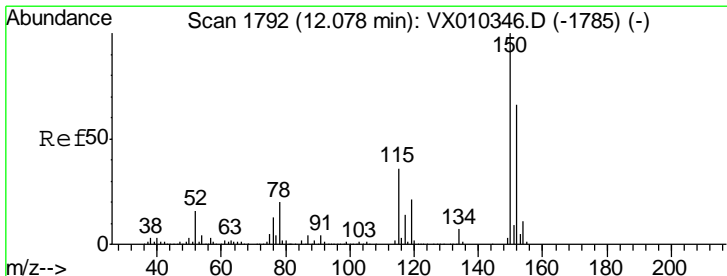
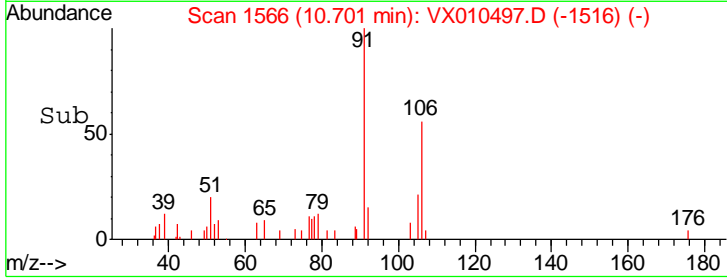
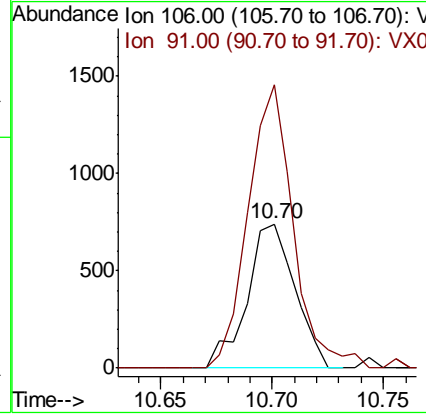
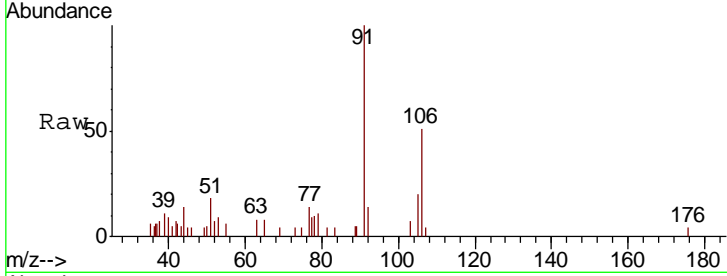




#69
 o-Xylene
 Concen: 0.232 ug/l
 RT: 10.70 min Scan# 1566
 Delta R.T. 0.01 min
 Lab File: VX010497.D
 Acq: 27 Jun 2019 18:27

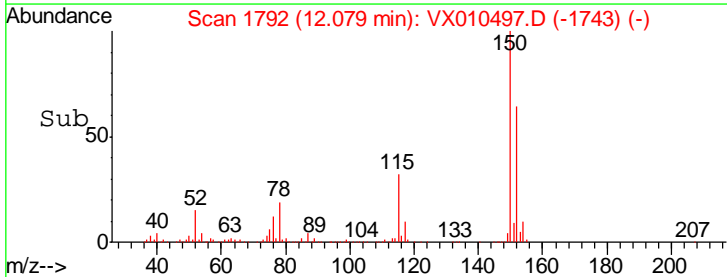
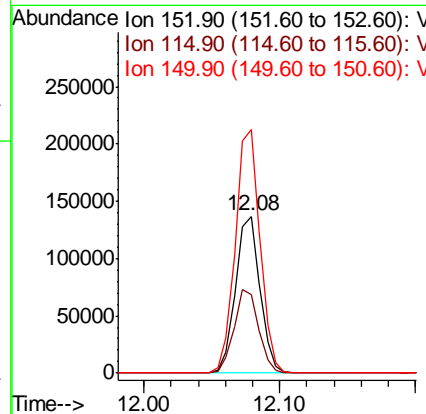
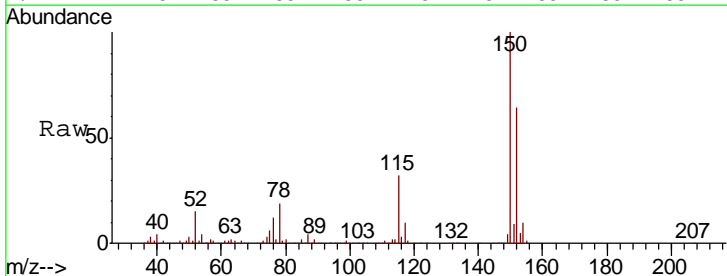
Instrument :
 MSVOA_X
 ClientSampled :
 FL-ER-2019-1

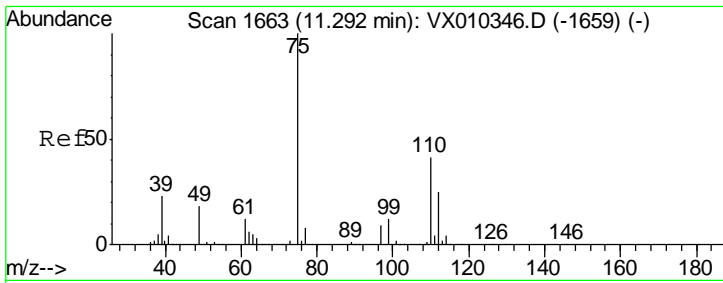
Tgt Ion:106 Resp: 1112
 Ion Ratio Lower Upper
 106 100
 91 185.0 102.7 308.1



#72
 1,4-Dichlorobenzene-d4
 Concen: 50.000 ug/l
 RT: 12.08 min Scan# 1792
 Delta R.T. 0.00 min
 Lab File: VX010497.D
 Acq: 27 Jun 2019 18:27

Tgt Ion:152 Resp: 171163
 Ion Ratio Lower Upper
 152 100
 115 53.5 38.6 115.7
 150 156.6 0.0 347.4

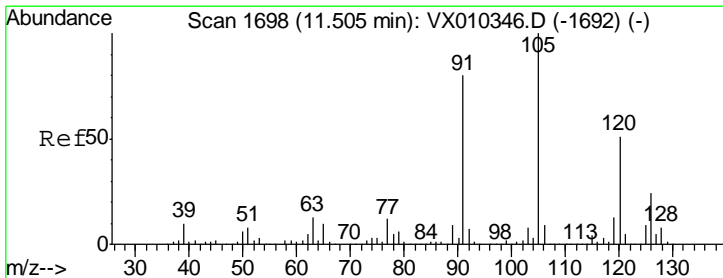
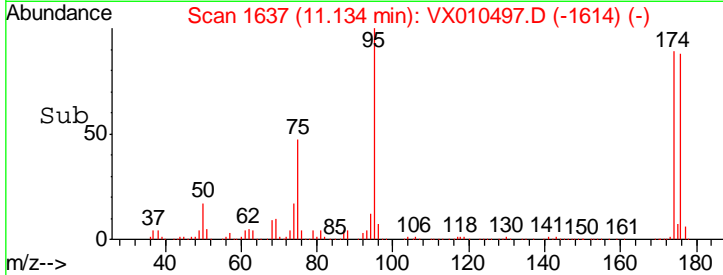
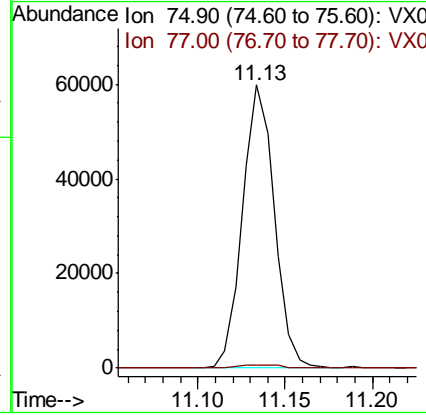
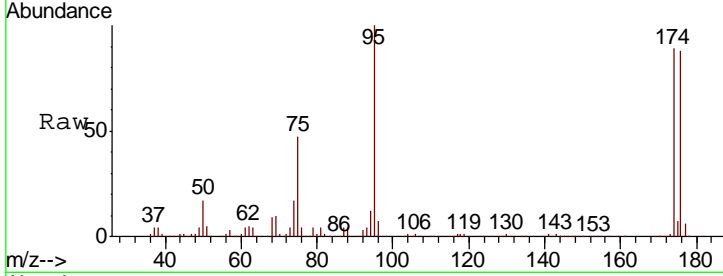




#76
 1,2,3-Trichloropropane
 Concen: 24.303 ug/l
 RT: 11.13 min Scan# 1637
 Delta R.T. -0.16 min
 Lab File: VX010497.D
 Acq: 27 Jun 2019 18:27

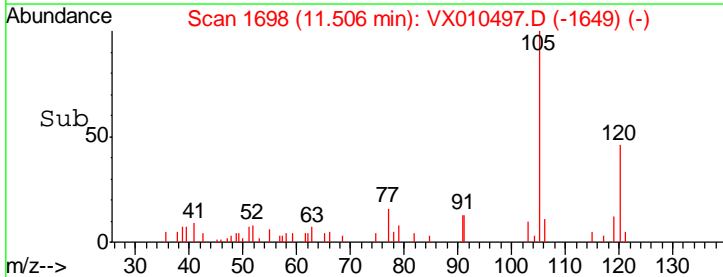
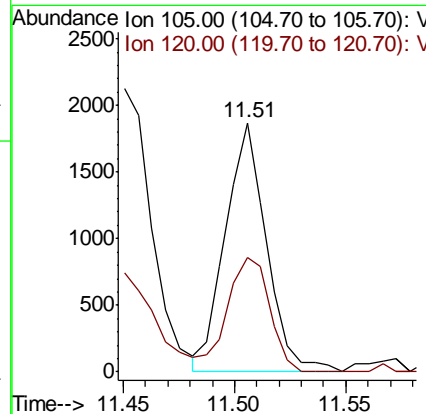
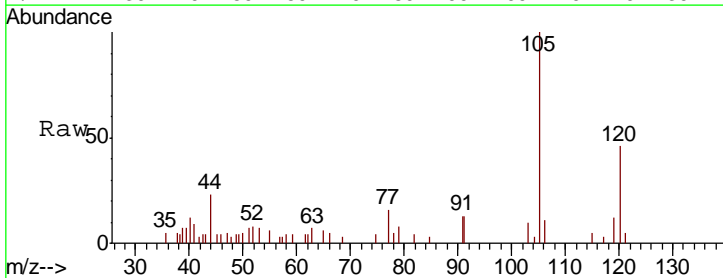
Instrument :
 MSVOA_X
 ClientSampled :
 FL-ER-2019-1

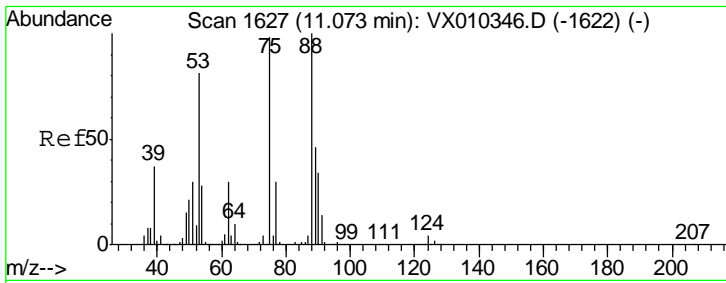
Tot Ion: 75 Resp: 75801
 Ion Ratio Lower Upper
 75 100
 77 1.6 22.6 67.8#



#80
 1,3,5-Trimethylbenzene
 Concen: 0.250 ug/l
 RT: 11.51 min Scan# 1698
 Delta R.T. 0.00 min
 Lab File: VX010497.D
 Acq: 27 Jun 2019 18:27

Tgt Ion: 105 Resp: 2394
 Ion Ratio Lower Upper
 105 100
 120 47.6 25.2 75.6

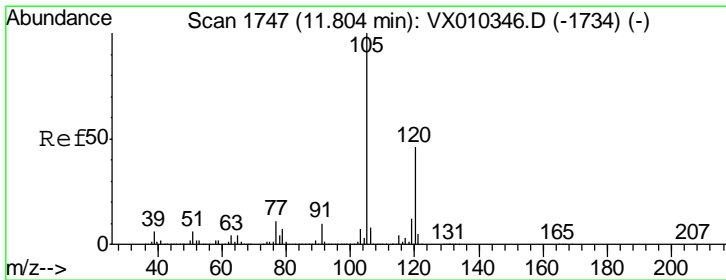
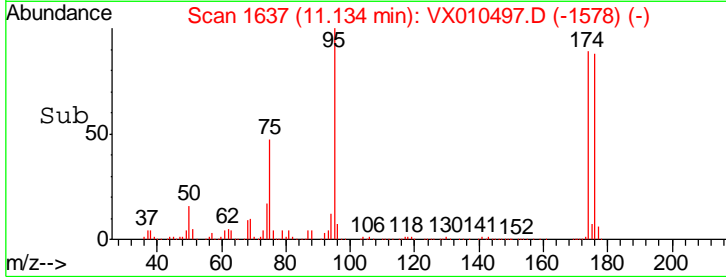
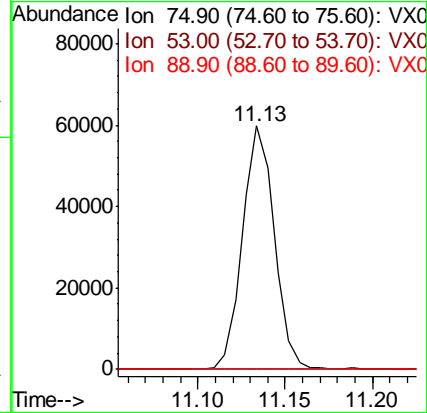
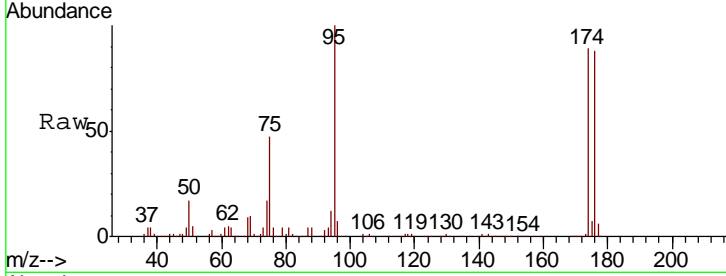




#81
 trans-1,4-Dichloro-2-butene
 Concen: 56.696 ug/l
 RT: 11.13 min Scan# 1637
 Delta R.T. 0.06 min
 Lab File: VX010497.D
 Acq: 27 Jun 2019 18:27

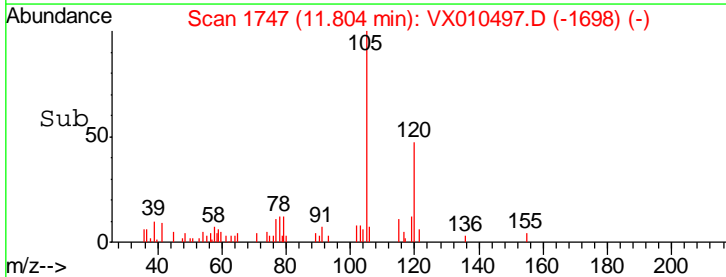
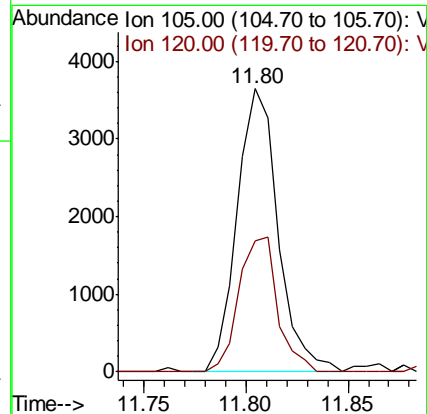
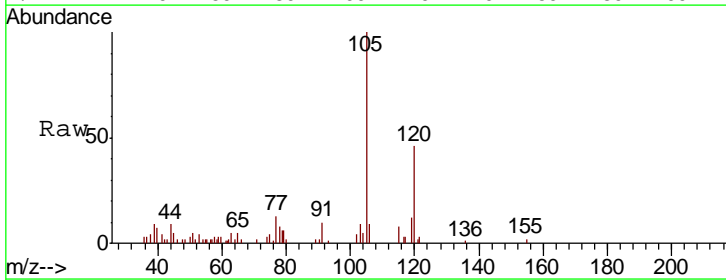
Instrument :
 MSVOA_X
 ClientSampled :
 FL-ER-2019-1

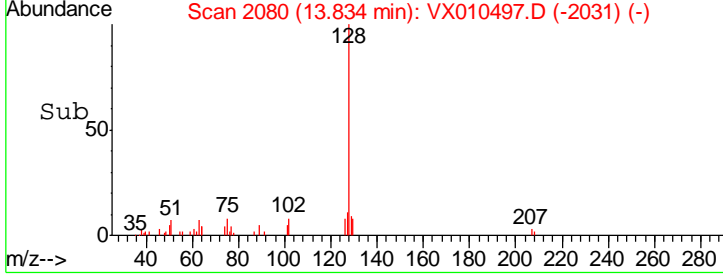
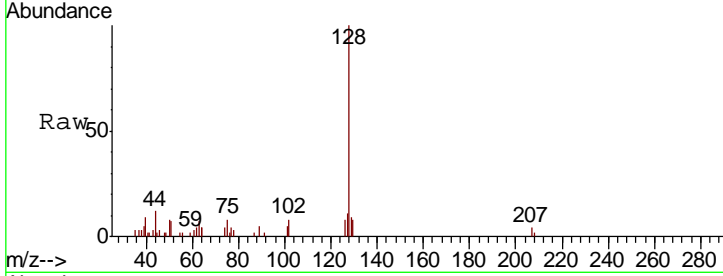
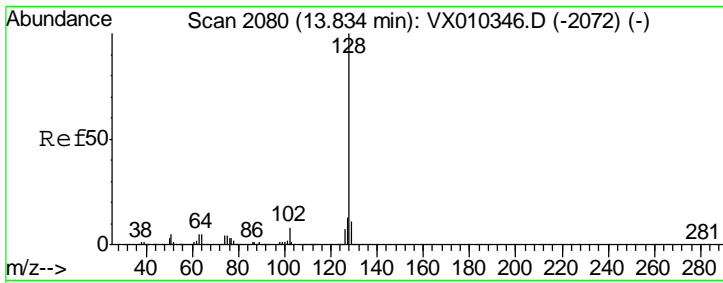
Tgt Ion	Resp	Lower	Upper
75	100		
53	0.1	66.1	99.1#
89	0.0	37.8	56.6#



#84
 1,2,4-Trimethylbenzene
 Concen: 0.529 ug/l
 RT: 11.80 min Scan# 1747
 Delta R.T. 0.00 min
 Lab File: VX010497.D
 Acq: 27 Jun 2019 18:27

Tgt Ion	Resp	Lower	Upper
105	100		
120	45.0	23.1	69.2





#95
 Naphthalene
 Concen: 0.370 ug/l
 RT: 13.83 min Scan# 2080
 Delta R.T. 0.00 min
 Lab File: VX010497.D
 Acq: 27 Jun 2019 18:27

Instrument : MSVOA_X
 ClientSampled : FL-ER-2019-1

Tot Ion	Ion	Ratio	Lower	Upper
4426	128	100		
	127	13.9	10.2	15.4
	129	15.8	8.9	13.3#

