

Data Path : Z:\VOASRV\HPCHEM1\MSVOA X\DATA\VX062719\
 Data File : VX010483.D
 Acq On : 27 Jun 2019 12:59
 Operator : JC/SP
 Sample : K3527-17
 Misc : 5.0mL/MSVOA X/WATER
 ALS Vial : 9 Sample Multiplier: 1

Instrument :
 MSVOA_X
 ClientSampleId :
 CPA-GMW-5D-R-M24W1-061919

Quant Time: Jun 28 07:14:55 2019
 Quant Method : Z:\VOASRV\HPCHEM1\MSVOA_X\METHOD\82X061919W.M
 Quant Title : SW846 8260
 QLast Update : Thu Jun 20 03:31:56 2019
 Response via : Initial Calibration

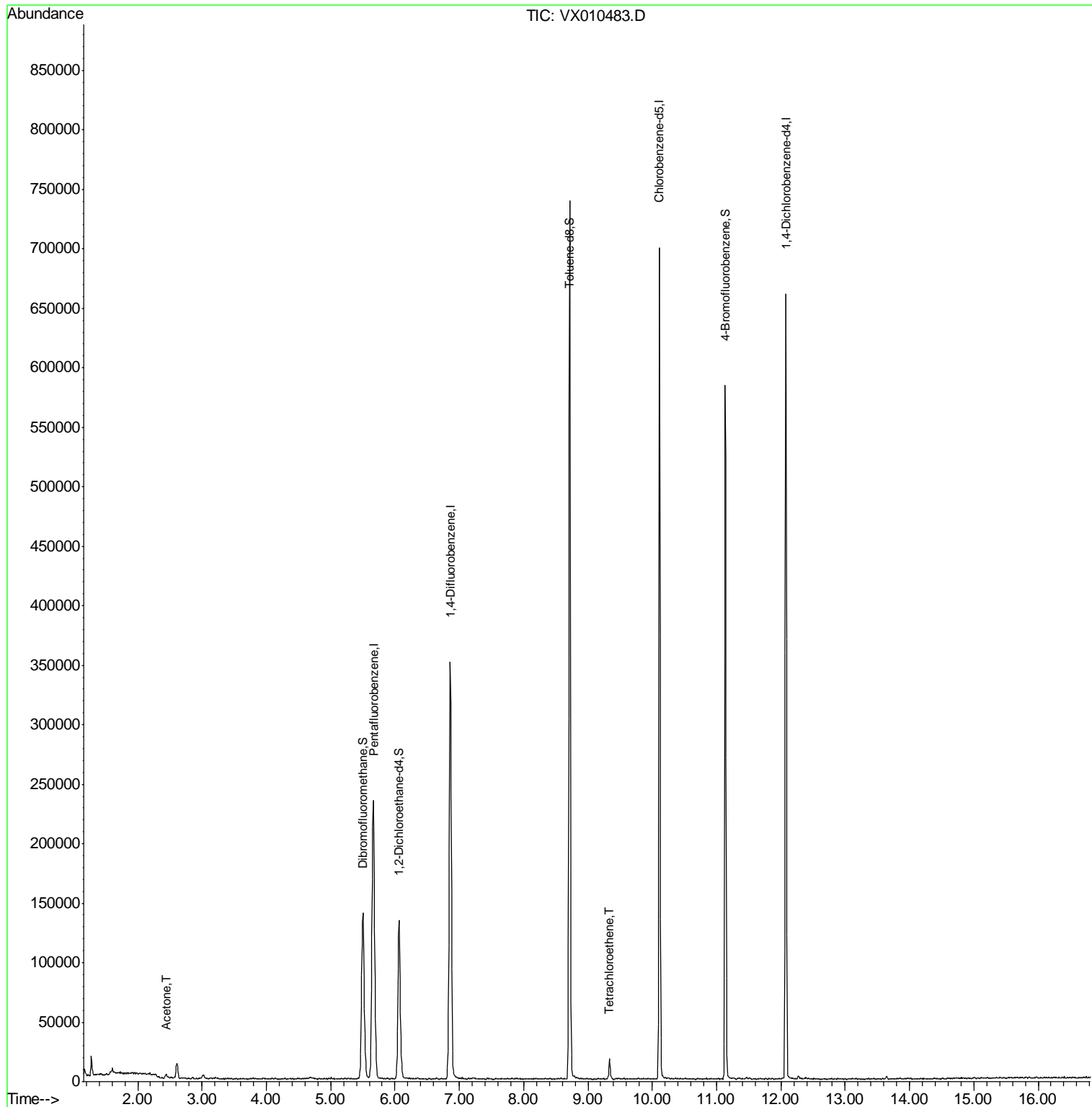
Internal Standards	R.T.	QIon	Response	Conc	Units	Dev(Min)
1) Pentafluorobenzene	5.67	168	249545	50.00	ug/l	0.00
34) 1,4-Difluorobenzene	6.86	114	384754	50.00	ug/l	0.00
63) Chlorobenzene-d5	10.11	117	343875	50.00	ug/l	0.00
72) 1,4-Dichlorobenzene-d4	12.08	152	148703	50.00	ug/l	0.00
System Monitoring Compounds						
33) 1,2-Dichloroethane-d4	6.06	65	119091	50.90	ug/l	0.00
Spiked Amount	50.000		Recovery	=	101.80%	
35) Dibromofluoromethane	5.50	113	117600	49.96	ug/l	0.00
Spiked Amount	50.000		Recovery	=	99.92%	
50) Toluene-d8	8.71	98	451087	50.09	ug/l	0.00
Spiked Amount	50.000		Recovery	=	100.18%	
62) 4-Bromofluorobenzene	11.13	95	143638	44.18	ug/l	0.00
Spiked Amount	50.000		Recovery	=	88.36%	
Target Compounds						
16) Acetone	2.44	43	3590	3.062	ug/l	99
64) Tetrachloroethene	9.34	164	3206	1.153	ug/l	92

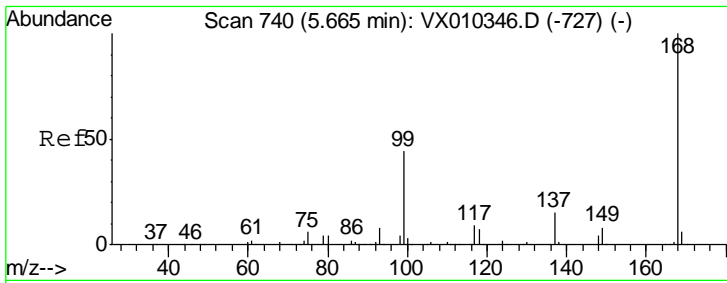
(#) = qualifier out of range (m) = manual integration (+) = signals summed

Data Path : Z:\VOASRV\HPCHEM1\MSVOA X\DATA\VX062719\
 Data File : VX010483.D
 Acq On : 27 Jun 2019 12:59
 Operator : JC/SP
 Sample : K3527-17
 Misc : 5.0mL/MSVOA X/WATER
 ALS Vial : 9 Sample Multiplier: 1

Instrument :
 MSVOA_X
 ClientSampled :
 CPA-GMW-5D-R-M24W1-061919

Quant Time: Jun 28 07:14:55 2019
 Quant Method : Z:\VOASRV\HPCHEM1\MSVOA_X\METHOD\82X061919W.M
 Quant Title : SW846 8260
 QLast Update : Thu Jun 20 03:31:56 2019
 Response via : Initial Calibration

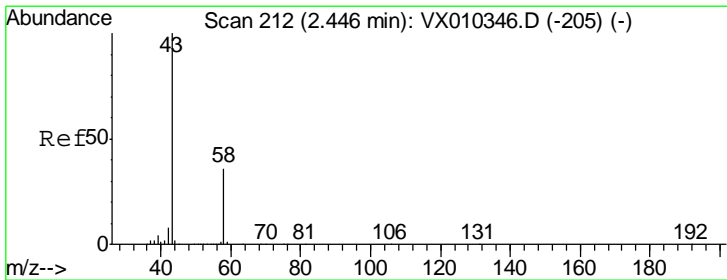
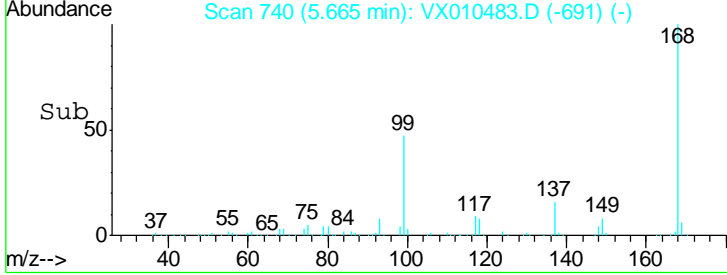
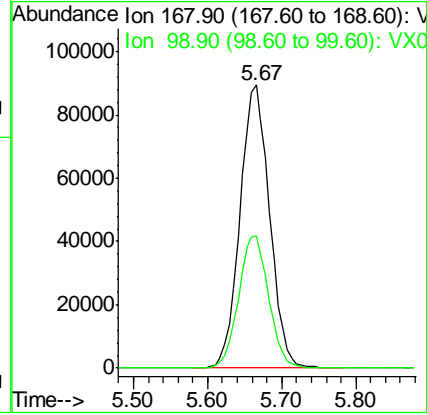
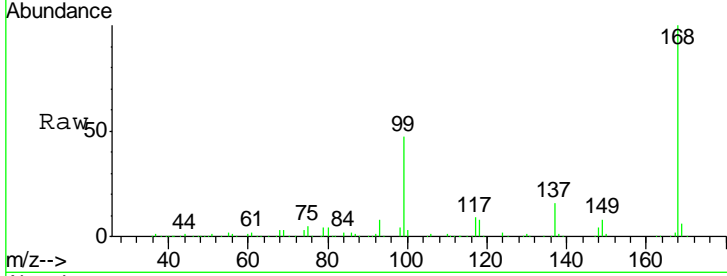




#1
 Pentafluorobenzene
 Concen: 50.000 ug/l
 RT: 5.67 min Scan# 740
 Delta R.T. 0.00 min
 Lab File: VX010483.D
 Acq: 27 Jun 2019 12:59

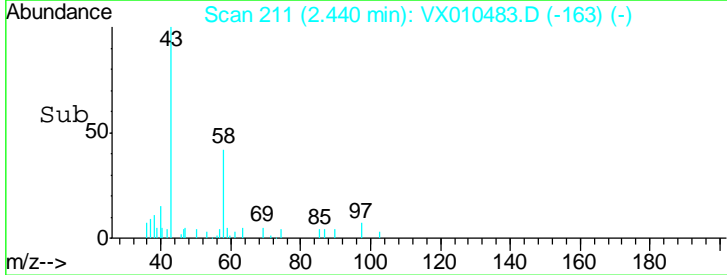
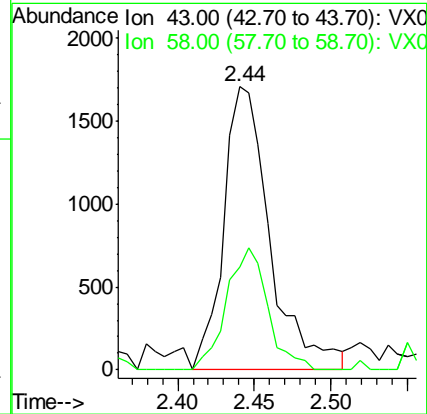
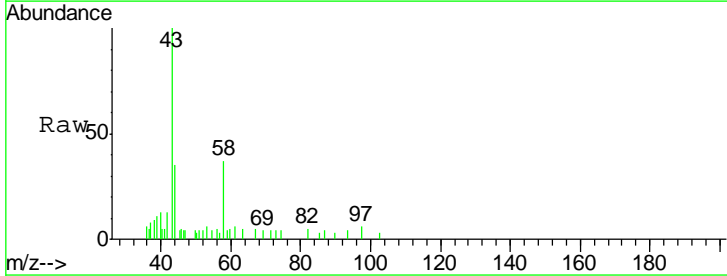
Instrument :
 MSVOA_X
ClientSampled :
 CPA-GMW-5D-R-M24W1-061919

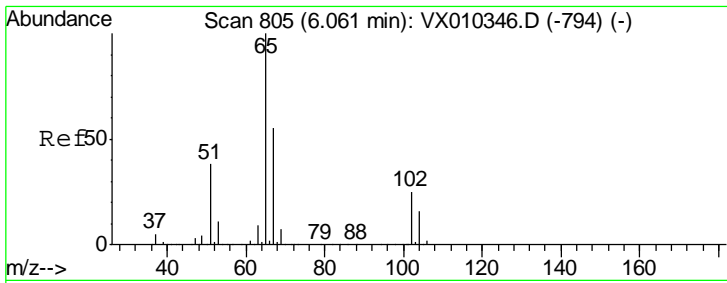
Tot Ion: 168 Resp: 249545
 Ion Ratio Lower Upper
 168 100
 99 46.8 35.5 53.3



#16
 Acetone
 Concen: 3.062 ug/l
 RT: 2.44 min Scan# 211
 Delta R.T. -0.01 min
 Lab File: VX010483.D
 Acq: 27 Jun 2019 12:59

Tgt Ion: 43 Resp: 3590
 Ion Ratio Lower Upper
 43 100
 58 36.6 28.9 43.3

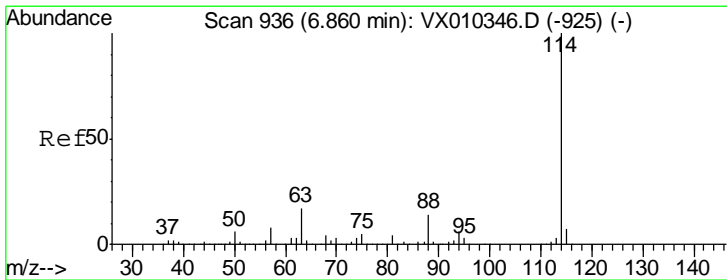
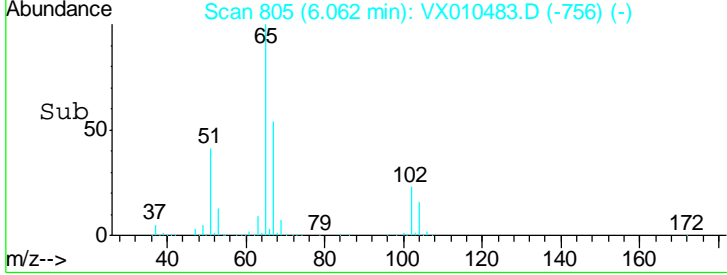
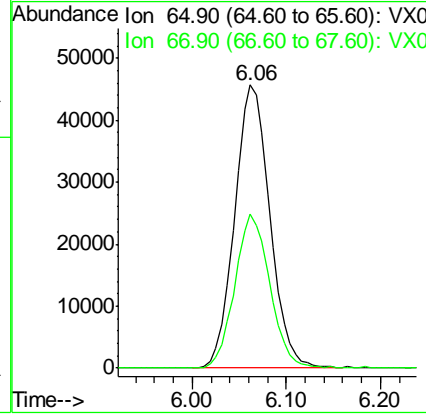
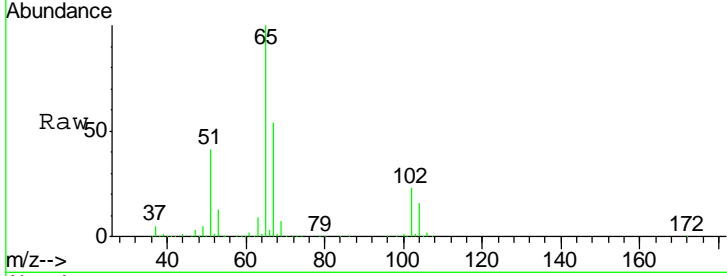




#33
 1,2-Dichloroethane-d4
 Concen: 50.899 ug/l
 RT: 6.06 min Scan# 805
 Delta R.T. 0.00 min
 Lab File: VX010483.D
 Acq: 27 Jun 2019 12:59

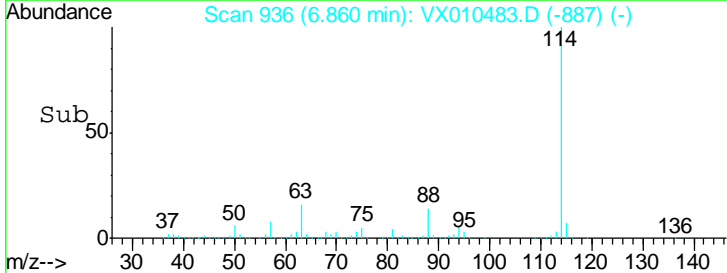
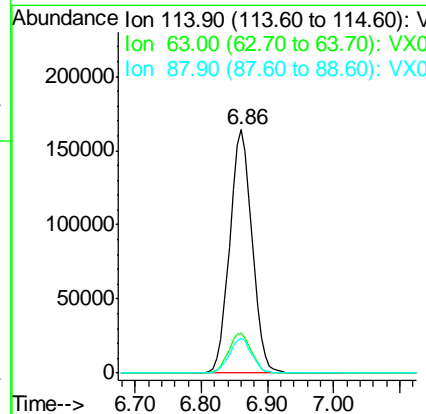
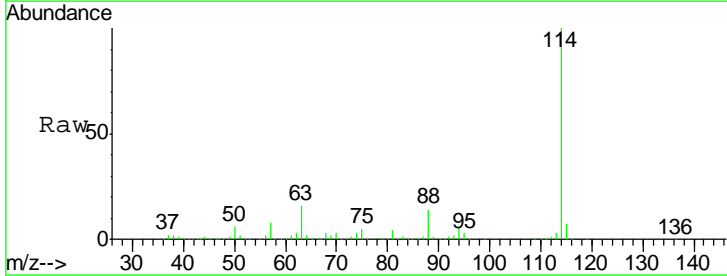
Instrument :
 MSVOA_X
ClientSampled :
 CPA-GMW-5D-R-M24W1-061919

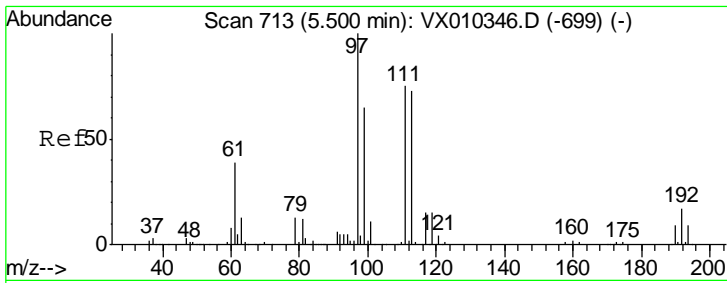
Tgt Ion	Resp	Lower	Upper
65	119091		
67	54.2	0.0	110.2



#34
 1,4-Difluorobenzene
 Concen: 50.000 ug/l
 RT: 6.86 min Scan# 936
 Delta R.T. 0.00 min
 Lab File: VX010483.D
 Acq: 27 Jun 2019 12:59

Tgt Ion	Resp	Lower	Upper
114	384754		
63	16.5	0.0	33.8
88	14.2	0.0	27.6

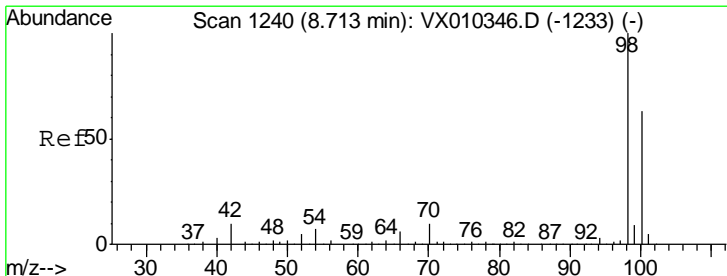
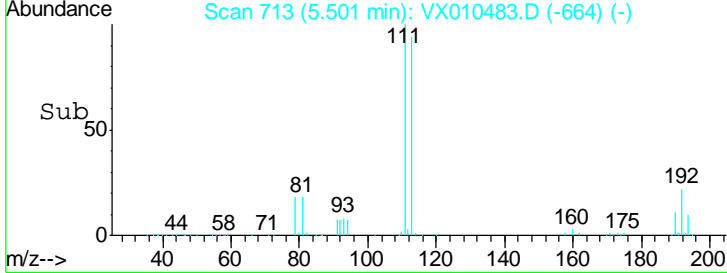
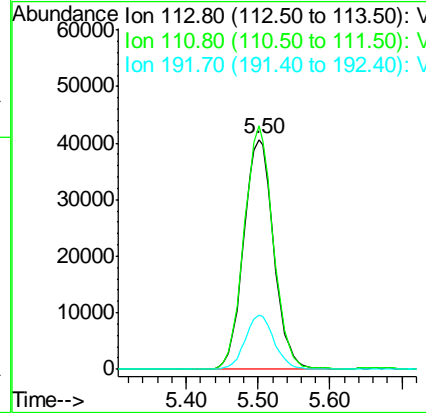
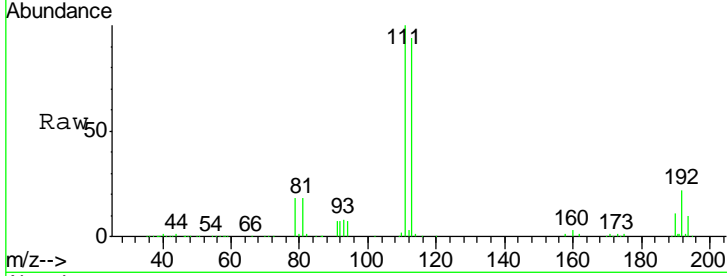




#35
 Dibromofluoromethane
 Concen: 49.956 ug/l
 RT: 5.50 min Scan# 713
 Delta R.T. 0.00 min
 Lab File: VX010483.D
 Acq: 27 Jun 2019 12:59

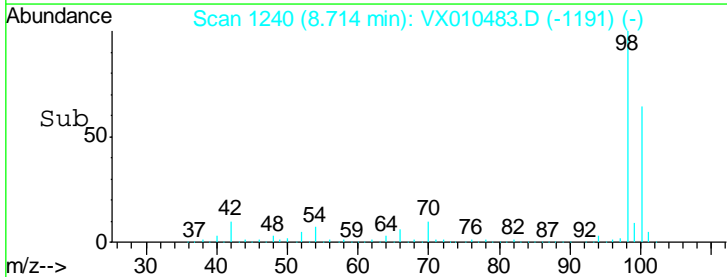
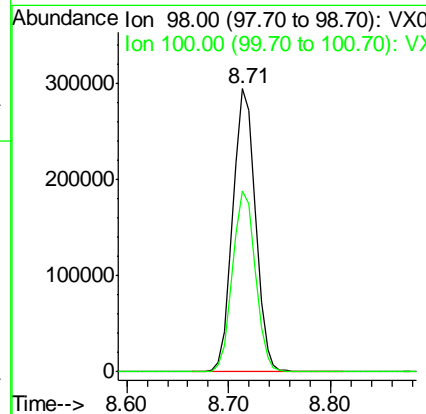
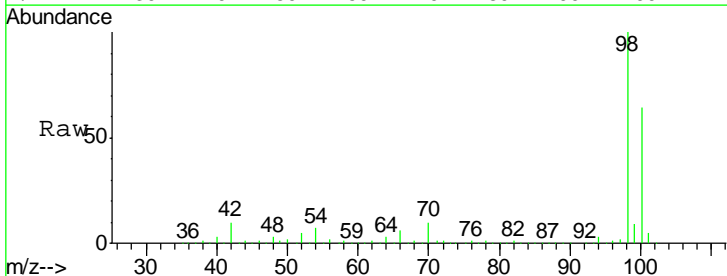
Instrument :
 MSVOA_X
ClientSampled :
 CPA-GMW-5D-R-M24W1-061919

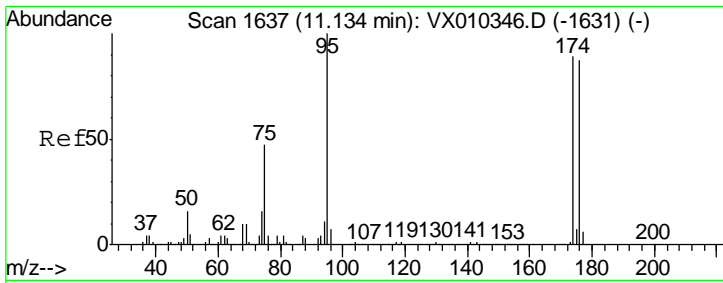
Tgt Ion	Resp	Lower	Upper
113	117600		
113	100		
111	102.8	81.2	121.8
192	23.0	18.6	27.8



#50
 Toluene-d8
 Concen: 50.086 ug/l
 RT: 8.71 min Scan# 1240
 Delta R.T. 0.00 min
 Lab File: VX010483.D
 Acq: 27 Jun 2019 12:59

Tgt Ion	Resp	Lower	Upper
98	451087		
98	100		
100	64.5	51.6	77.4

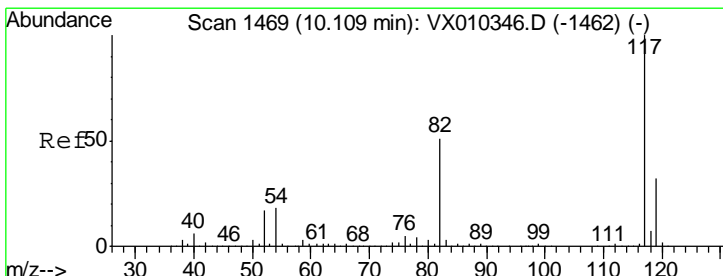
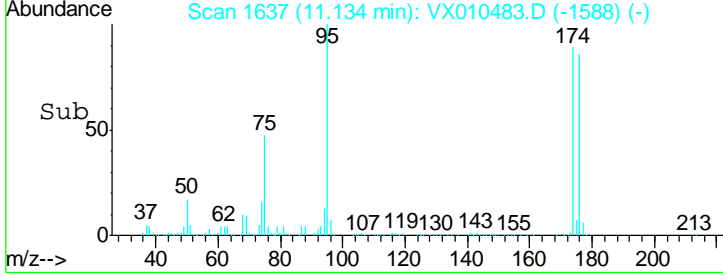
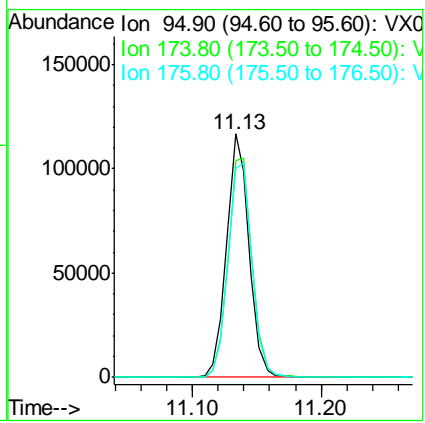
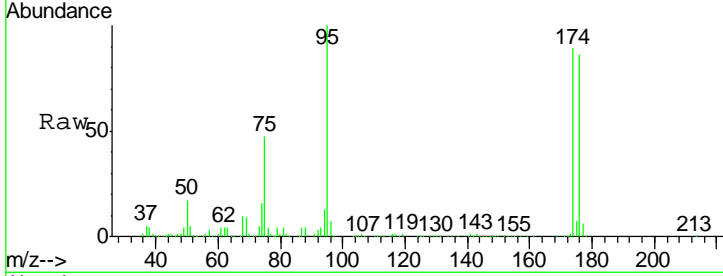




#62
 4-Bromofluorobenzene
 Concen: 44.176 ug/l
 RT: 11.13 min Scan# 1637
 Delta R.T. 0.00 min
 Lab File: VX010483.D
 Acq: 27 Jun 2019 12:59

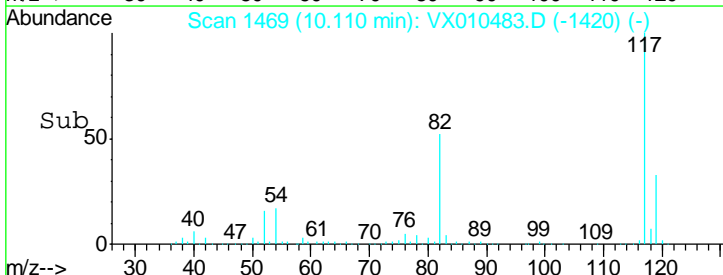
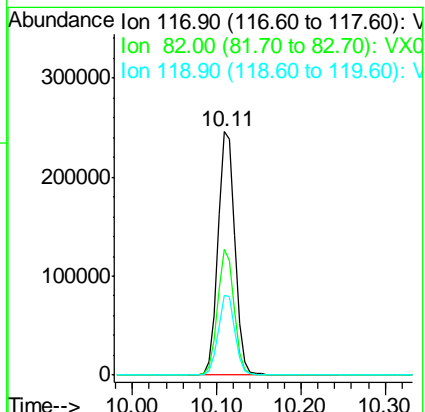
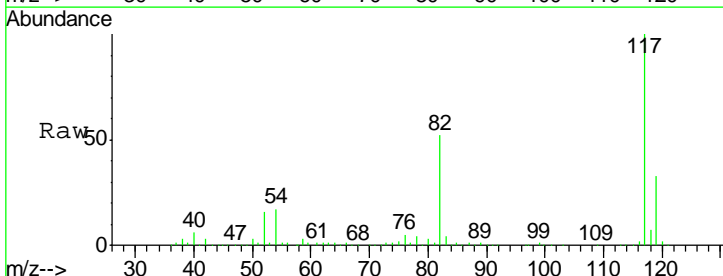
Instrument : MSVOA_X
 Client Sampled : CPA-GMW-5D-R-M24W1-061919

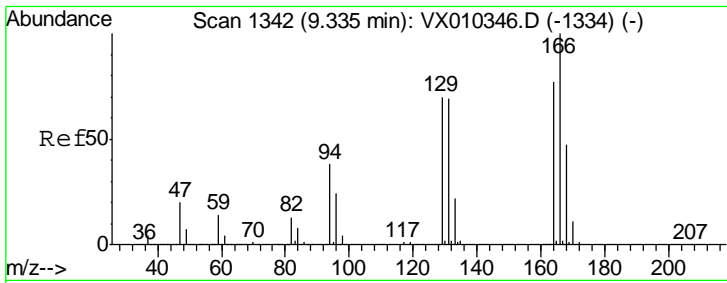
Tgt Ion	Resp	Lower	Upper
95	143638		
174	95.8	0.0	187.6
176	94.1	0.0	184.0



#63
 Chlorobenzene-d5
 Concen: 50.000 ug/l
 RT: 10.11 min Scan# 1469
 Delta R.T. 0.00 min
 Lab File: VX010483.D
 Acq: 27 Jun 2019 12:59

Tgt Ion	Resp	Lower	Upper
117	343875		
82	51.9	41.2	61.8
119	32.7	25.5	38.3

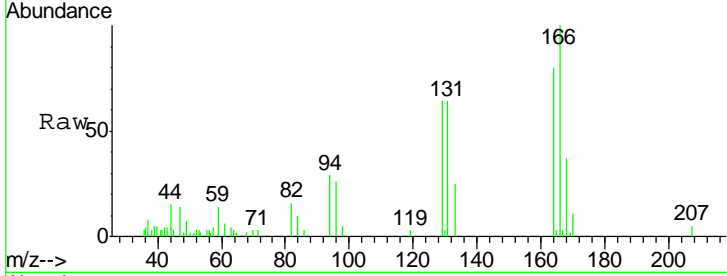




#64

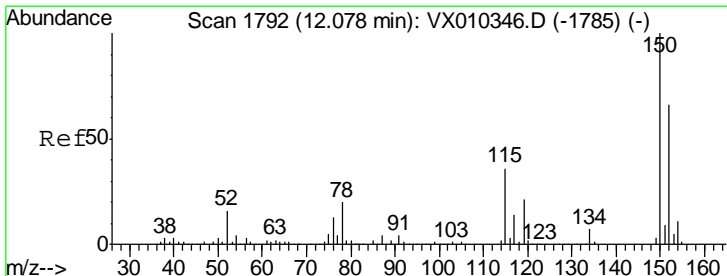
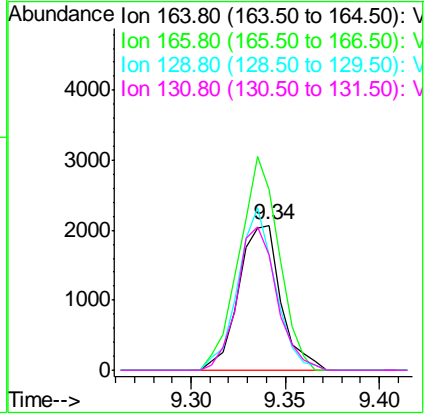
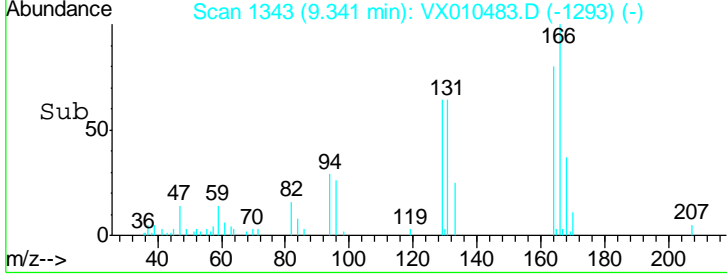
Tetrachloroethene
 Concen: 1.153 ug/l
 RT: 9.34 min Scan# 1343
 Delta R.T. 0.01 min
 Lab File: VX010483.D
 Acq: 27 Jun 2019 12:59

Instrument :
 MSVOA_X
ClientSampled :
 CPA-GMW-5D-R-M24W1-061919



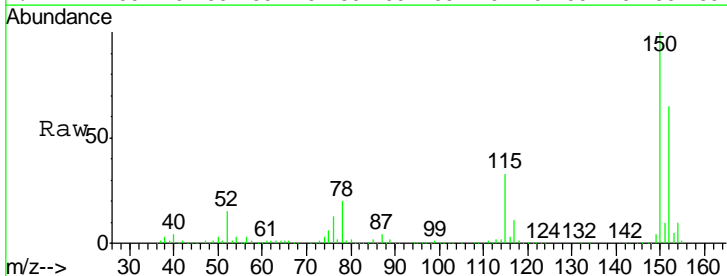
Tgt Ion:164 Resp: 3206

Ion	Ratio	Lower	Upper
164	100		
166	124.5	103.6	155.4
129	79.8	73.0	109.4
131	80.1	71.0	106.4



#72

1,4-Dichlorobenzene-d4
 Concen: 50.000 ug/l
 RT: 12.08 min Scan# 1792
 Delta R.T. 0.00 min
 Lab File: VX010483.D
 Acq: 27 Jun 2019 12:59



Tgt Ion:152 Resp: 148703

Ion	Ratio	Lower	Upper
152	100		
115	53.8	38.6	115.7
150	155.6	0.0	347.4

