

Data Path : Z:\VOASRV\HPCHEM1\MSVOA X\DATA\VX062719\  
 Data File : VX010479.D  
 Acq On : 27 Jun 2019 11:25  
 Operator : JC/SP  
 Sample : K3543-01  
 Misc : 5.0mL/MSVOA X/WATER  
 ALS Vial : 5 Sample Multiplier: 1

Instrument :  
 MSVOA\_X  
 ClientSampleId :  
 BP-TB1-20190625

Integration Parameters: RTEINT.P

Integrator: RTE  
 Smoothing : ON Filtering: 5  
 Sampling : 1 Min Area: 3 % of largest Peak  
 Start Thrs: 0.2 Max Peaks: 100  
 Stop Thrs : 0 Peak Location: TOP

If leading or trailing edge < 100 prefer < Baseline drop else tangent >  
 Peak separation: 5

Method : Z:\VOASRV\HPCHEM1\MSVOA\_X\METHOD\82X061919W.M  
 Title : SW846 8260

Signal : TIC

peak #	R.T. min	first scan	max scan	last scan	PK TY	peak height	corr. area	corr. % max.	% of total
1	1.282	17	21	26	rBV	7965	11925	1.08%	0.206%
2	3.019	300	306	315	rVB2	5066	11270	1.02%	0.194%
3	5.495	700	712	724	rBV	132650	384751	34.82%	6.634%
4	5.659	728	739	749	rBV	230253	640835	58.00%	11.050%
5	6.061	794	805	818	rBV2	127229	335405	30.36%	5.783%
6	6.854	924	935	951	rBV	331865	804369	72.80%	13.870%
7	8.713	1232	1240	1252	rBV	720062	1104836	100.00%	19.051%
8	10.110	1463	1469	1477	rBV	692044	931210	84.28%	16.057%
9	11.134	1631	1637	1649	rBV	576358	728593	65.95%	12.563%
10	12.073	1784	1791	1801	rBV	658312	846217	76.59%	14.591%

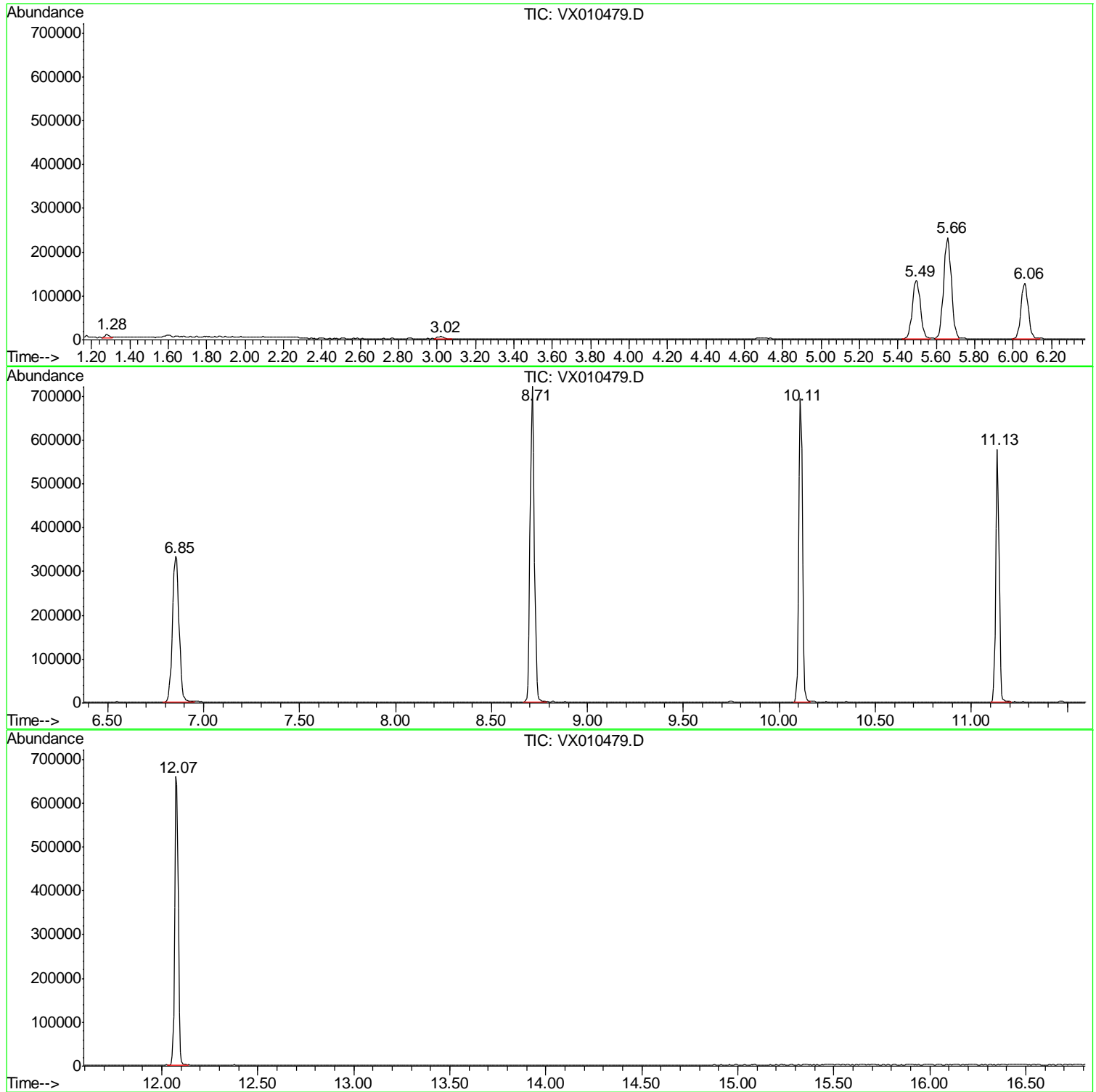
Sum of corrected areas: 5799411

Data Path : Z:\VOASRV\HPCHEM1\MSVOA X\DATA\VX062719\  
Data File : VX010479.D  
Acq On : 27 Jun 2019 11:25  
Operator : JC/SP  
Sample : K3543-01  
Misc : 5.0mL/MSVOA X/WATER  
ALS Vial : 5 Sample Multiplier: 1

Instrument :  
MSVOA\_X  
ClientSampled :  
BP-TB1-20190625

Quant Method : Z:\VOASRV\HPCHEM1\MSVOA\_X\METHOD\82X061919W.M  
Quant Title : SW846 8260

TIC Library : C:\DATABASE\NIST11.L  
TIC Integration Parameters: LSCINT.P



Data Path : Z:\VOASRV\HPCHEM1\MSVOA\_X\DATA\VX062719\  
Data File : VX010479.D  
Acq On : 27 Jun 2019 11:25  
Operator : JC/SP  
Sample : K3543-01  
Misc : 5.0mL/MSVOA\_X/WATER  
ALS Vial : 5 Sample Multiplier: 1

Instrument :  
MSVOA\_X  
ClientSampleId :  
BP-TB1-20190625

Quant Method : Z:\VOASRV\HPCHEM1\MSVOA\_X\METHOD\82X061919W.M  
Quant Title : SW846 8260

TIC Library : C:\DATABASE\NIST11.L  
TIC Integration Parameters: LSCINT.P

No Library Search Compounds Detected

\*\*\*\*\*

Data Path : Z:\VOASRV\HPCHEM1\MSVOA\_X\DATA\VX062719\  
Data File : VX010479.D  
Acq On : 27 Jun 2019 11:25  
Operator : JC/SP  
Sample : K3543-01  
Misc : 5.0mL/MSVOA\_X/WATER  
ALS Vial : 5 Sample Multiplier: 1

Instrument :  
MSVOA\_X  
ClientSampleId :  
BP-TB1-20190625

Quant Method : Z:\VOASRV\HPCHEM1\MSVOA\_X\METHOD\82X061919W.M  
Quant Title : SW846 8260

TIC Library : C:\DATABASE\NIST11.L  
TIC Integration Parameters: LSCINT.P

TIC Top Hit name	RT	EstConc	Units	Response	--Internal Standard--			
					#	RT	Resp	Conc

---