

Data Path : Z:\VOASRV\HPCHEM1\MSVOA X\DATA\VX062818\
 Data File : VX003014.D
 Acq On : 29 Jun 2018 05:22
 Operator : JC/MD
 Sample : J3720-03
 Misc : 5.0mL/MSVOA X/WATER
 ALS Vial : 41 Sample Multiplier: 1

Instrument :
 MSVOA_X
 ClientSampled :
 MW-13

Quant Time: Jun 29 07:59:51 2018
 Quant Method : Z:\VOASRV\HPCHEM1\MSVOA_X\METHOD\82X062518W.M
 Quant Title : SW846 8260
 QLast Update : Mon Jun 25 14:38:05 2018
 Response via : Initial Calibration

Internal Standards	R.T.	QIon	Response	Conc	Units	Dev(Min)
1) Pentafluorobenzene	5.67	168	289564	50.00	ug/l	0.00
34) 1,4-Difluorobenzene	6.87	114	407510	50.00	ug/l	0.00
63) Chlorobenzene-d5	10.12	117	376787	50.00	ug/l	0.00
72) 1,4-Dichlorobenzene-d4	12.08	152	210554	50.00	ug/l	0.00

System Monitoring Compounds

33) 1,2-Dichloroethane-d4	6.07	65	193855	48.44	ug/l	0.00
Spiked Amount	50.000		Recovery	=	96.88%	
35) Dibromofluoromethane	5.51	113	156720	48.56	ug/l	0.00
Spiked Amount	50.000		Recovery	=	97.12%	
50) Toluene-d8	8.72	98	568728	48.26	ug/l	0.00
Spiked Amount	50.000		Recovery	=	96.52%	
62) 4-Bromofluorobenzene	11.14	95	200289	44.07	ug/l	0.00
Spiked Amount	50.000		Recovery	=	88.14%	

Target Compounds

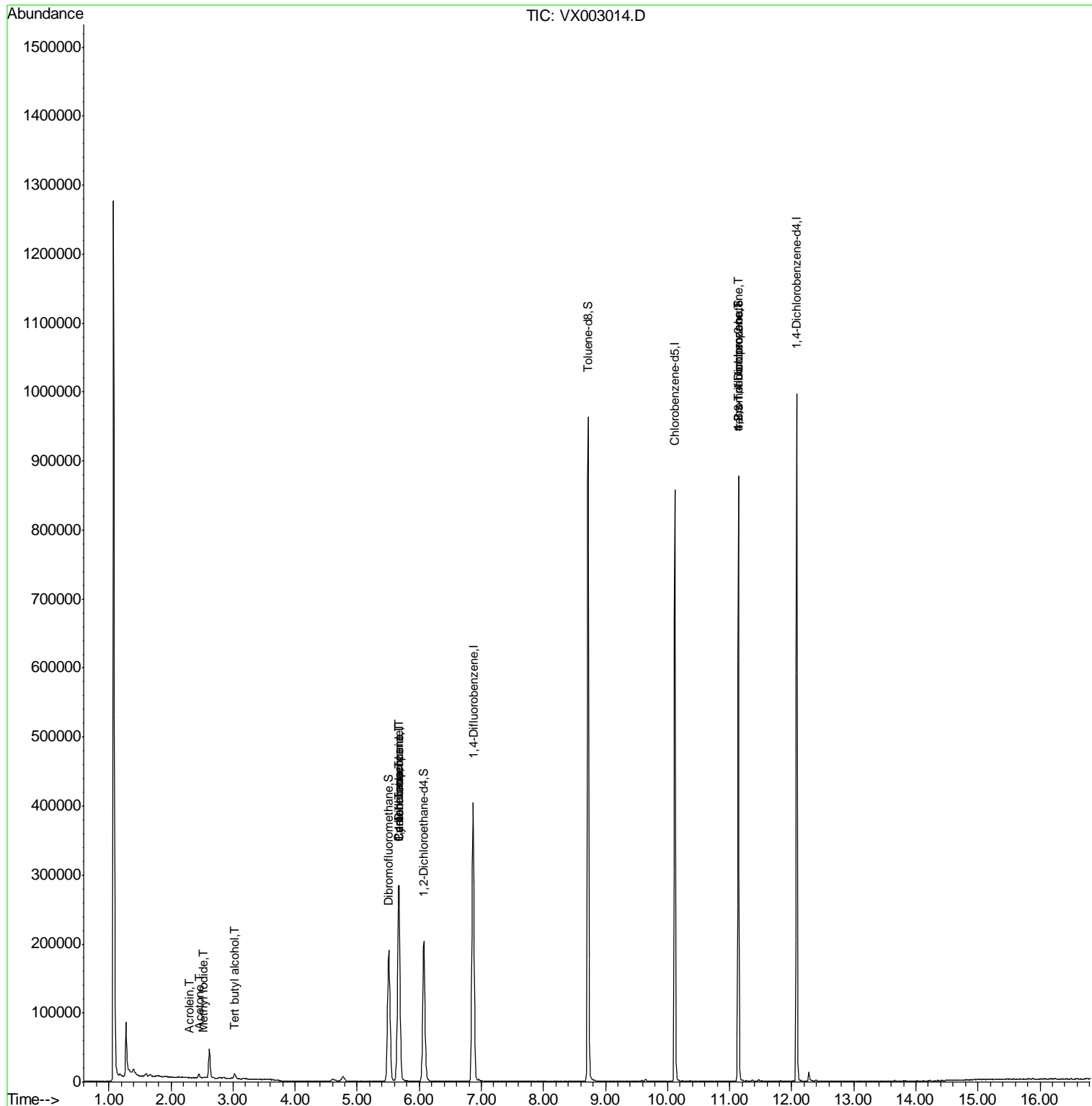
	R.T.	QIon	Response	Conc	Units	Qvalue
2) Dichlorodifluoromethane	1.20	85	51	Below Cal	#	43
3) Chloromethane	1.32	50	1062	Below Cal	#	46
5) Bromomethane	1.65	94	2093	Below Cal		94
6) Chloroethane	1.73	64	130	Below Cal	#	46
10) Methyl Iodide	2.52	142	1567	6.65	ug/l	99
11) Tert butyl alcohol	3.03	59	4159	5.22	ug/l	# 80
13) Acrolein	2.29	56	123	4.50	ug/l	# 1
16) Acetone	2.45	43	5860	3.54	ug/l	# 89
31) Cyclohexane	5.67	56	5813	1.16	ug/l	# 17
36) 1,1-Dichloropropene	5.67	75	19170	4.29	ug/l	# 51
38) Carbon Tetrachloride	5.67	117	26149	5.33	ug/l	# 17
76) 1,2,3-Trichloropropane	11.14	75	102767	26.95	ug/l	# 33
81) trans-1,4-Dichloro-2-buten	11.14	75	102767	76.28	ug/l	# 7

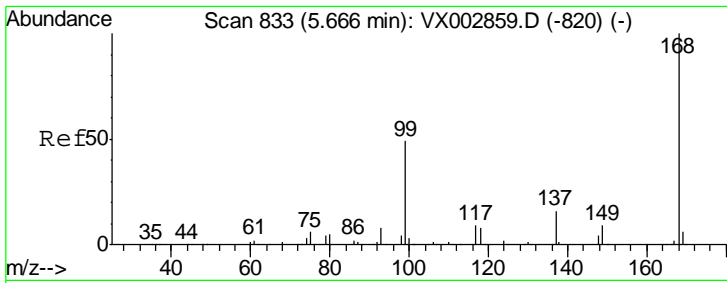
(#) = qualifier out of range (m) = manual integration (+) = signals summed

Data Path : Z:\VOASRV\HPCHEM1\MSVOA X\DATA\VX062818\
 Data File : VX003014.D
 Acq On : 29 Jun 2018 05:22
 Operator : JC/MD
 Sample : J3720-03
 Misc : 5.0mL/MSVOA X/WATER
 ALS Vial : 41 Sample Multiplier: 1

Instrument :
 MSVOA_X
 Client Sampled :
 MW-13

Quant Time: Jun 29 07:59:51 2018
 Quant Method : Z:\VOASRV\HPCHEM1\MSVOA_X\METHOD\82X062518W.M
 Quant Title : SW846 8260
 QLast Update : Mon Jun 25 14:38:05 2018
 Response via : Initial Calibration

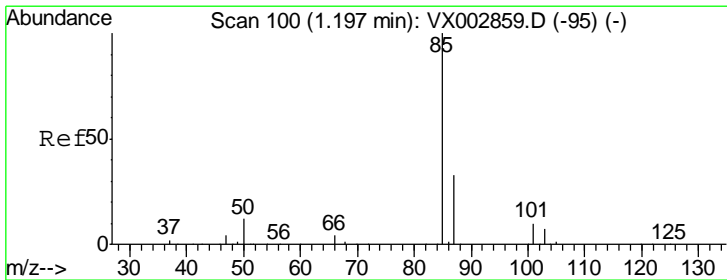
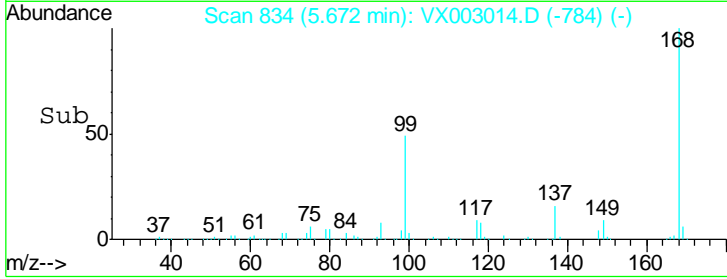
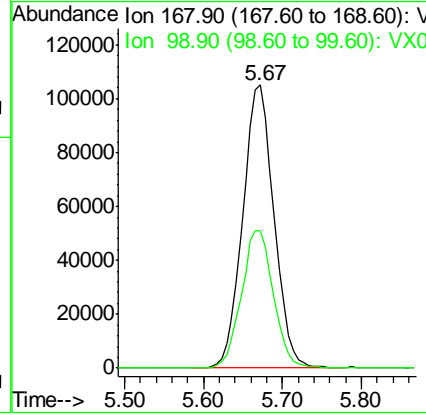
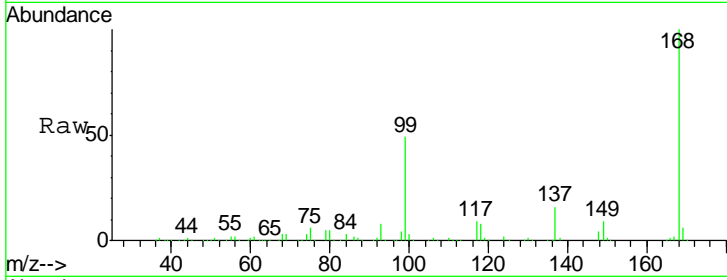




#1
 Pentafluorobenzene
 Concen: 50.00 ug/l
 RT: 5.67 min Scan# 834
 Delta R.T. 0.01 min
 Lab File: VX003014.D
 Acq: 29 Jun 2018 05:22

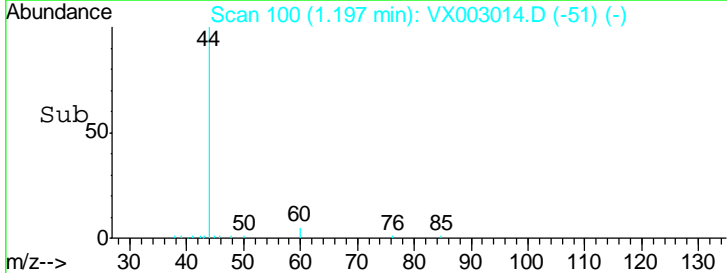
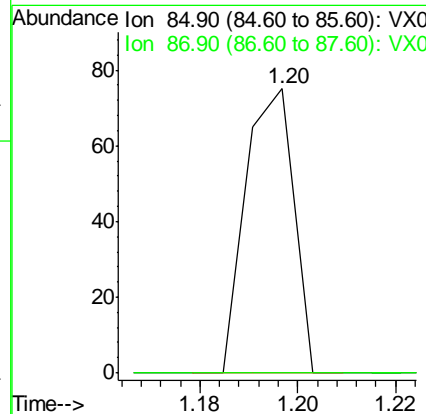
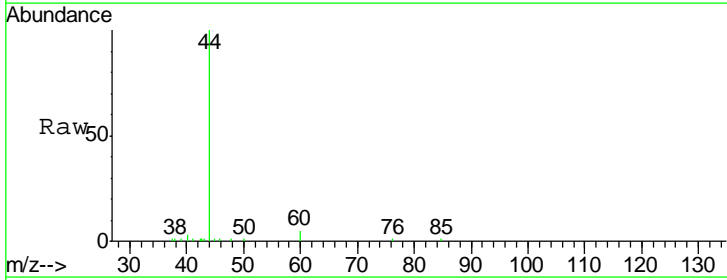
Instrument :
 MSVOA_X
 ClientSampled :
 MW-13

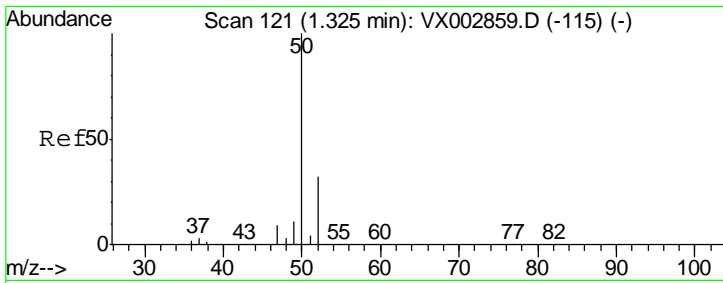
Tot Ion: 168 Resp: 289564
 Ion Ratio Lower Upper
 168 100
 99 48.7 39.3 58.9



#2
 Dichlorodifluoromethane
 Concen: Below Cal
 RT: 1.20 min Scan# 100
 Delta R.T. 0.00 min
 Lab File: VX003014.D
 Acq: 29 Jun 2018 05:22

Tgt Ion: 85 Resp: 51
 Ion Ratio Lower Upper
 85 100
 87 0.0 16.0 47.9#

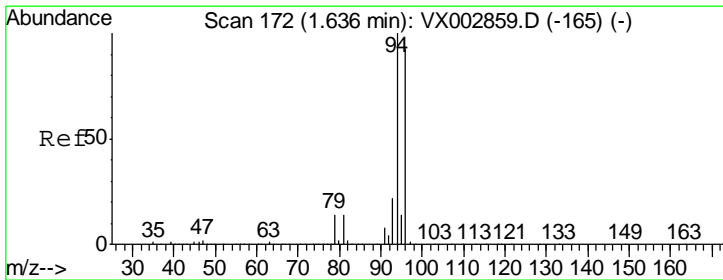
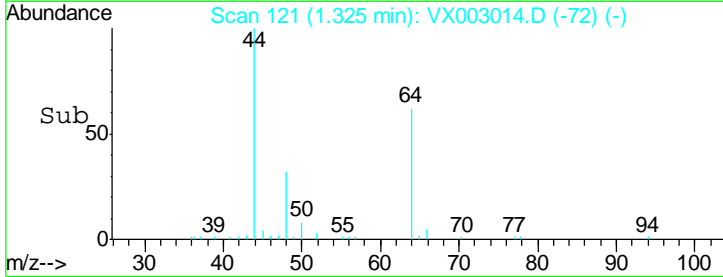
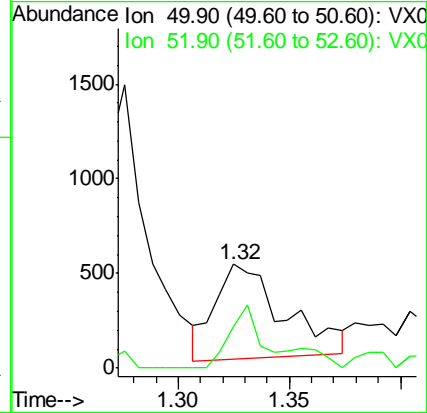
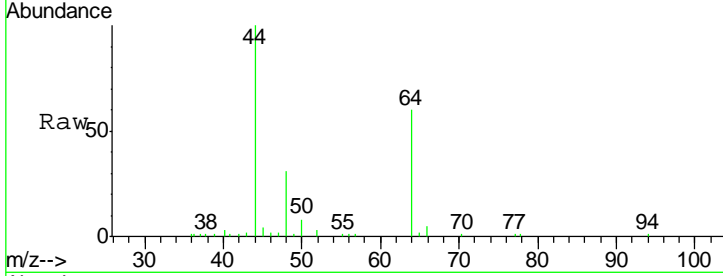




#3
 Chloromethane
 Concen: Below Cal
 RT: 1.32 min Scan# 121
 Delta R.T. 0.00 min
 Lab File: VX003014.D
 Acq: 29 Jun 2018 05:22

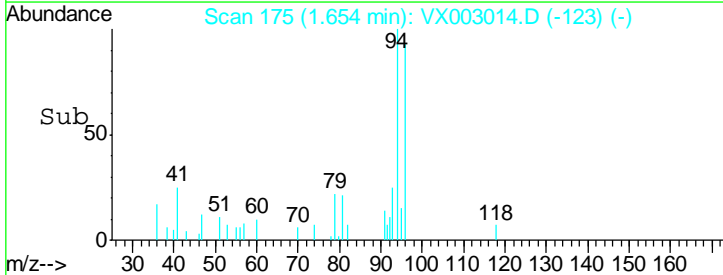
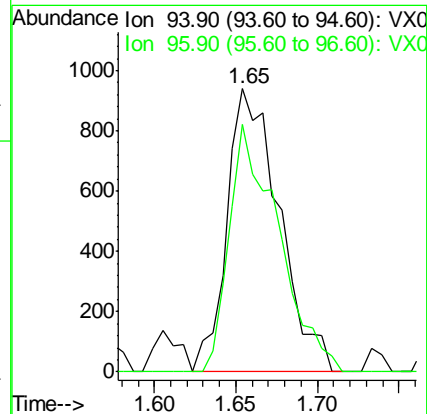
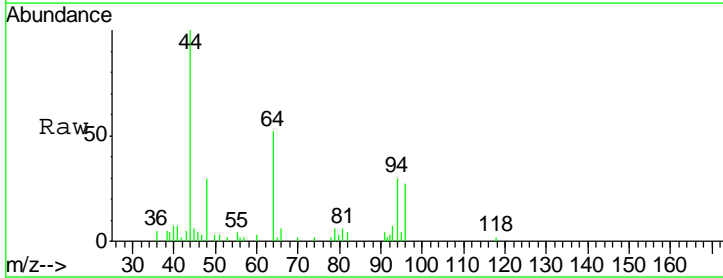
Instrument :
 MSVOA_X
 ClientSampled :
 MW-13

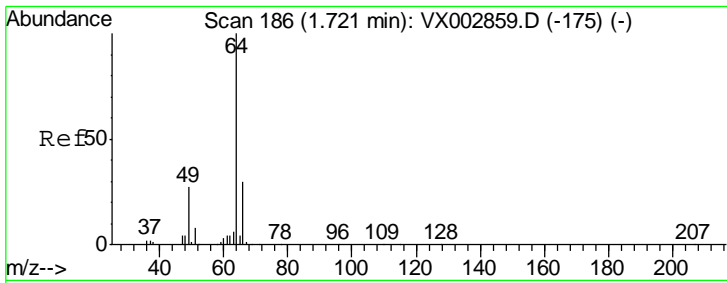
Tgt Ion: 50 Resp: 1062
 Ion Ratio Lower Upper
 50 100
 52 62.4 25.7 38.5#



#5
 Bromomethane
 Concen: Below Cal
 RT: 1.65 min Scan# 175
 Delta R.T. 0.02 min
 Lab File: VX003014.D
 Acq: 29 Jun 2018 05:22

Tgt Ion: 94 Resp: 2093
 Ion Ratio Lower Upper
 94 100
 96 87.4 74.9 112.3

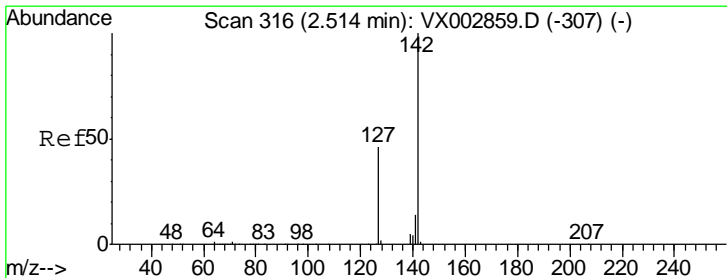
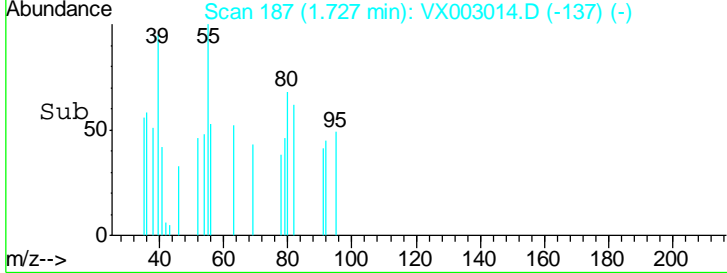
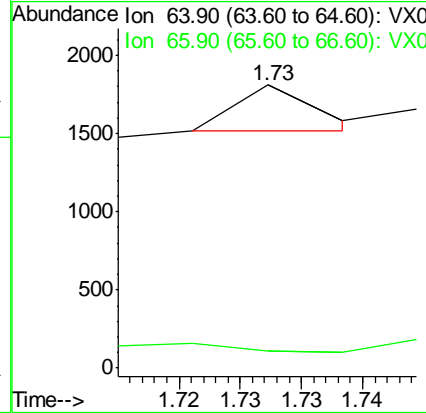
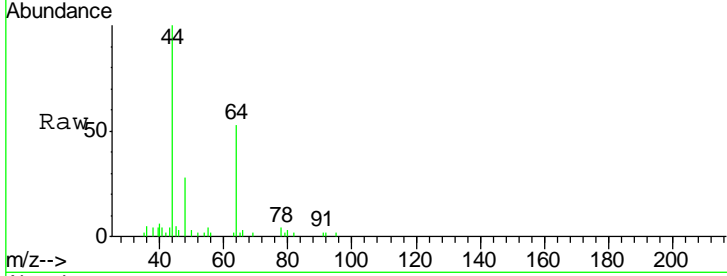




#6
 Chloroethane
 Concen: Below Cal
 RT: 1.73 min Scan# 187
 Delta R.T. 0.01 min
 Lab File: VX003014.D
 Acq: 29 Jun 2018 05:22

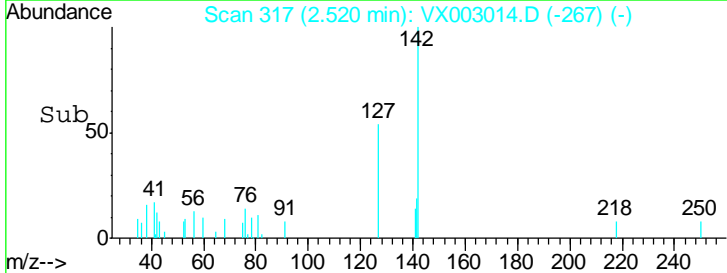
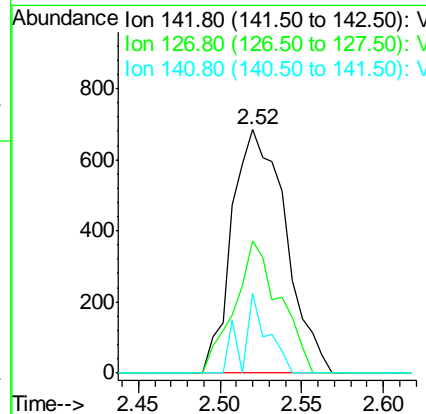
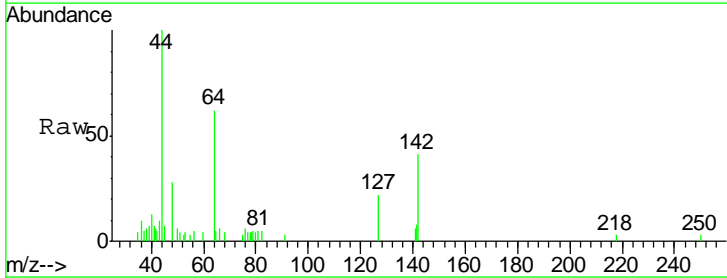
Instrument :
 MSVOA_X
 ClientSampled :
 MW-13

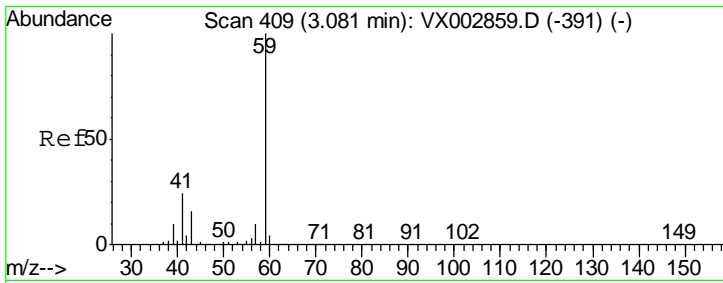
Tgt Ion	Resp	Lower	Upper
64	130		
66	2.1	25.5	38.3#



#10
 Methyl Iodide
 Concen: 6.65 ug/l
 RT: 2.52 min Scan# 317
 Delta R.T. 0.01 min
 Lab File: VX003014.D
 Acq: 29 Jun 2018 05:22

Tgt Ion	Resp	Lower	Upper
142	1567		
127	45.4	36.6	55.0
141	15.1	11.3	16.9

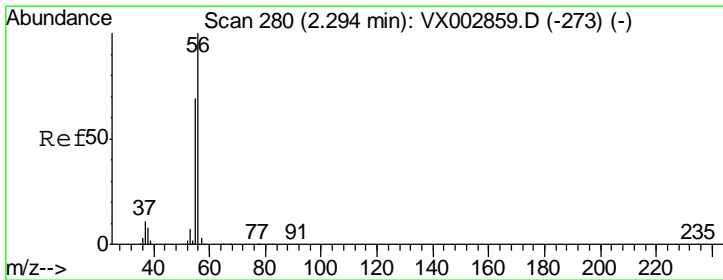
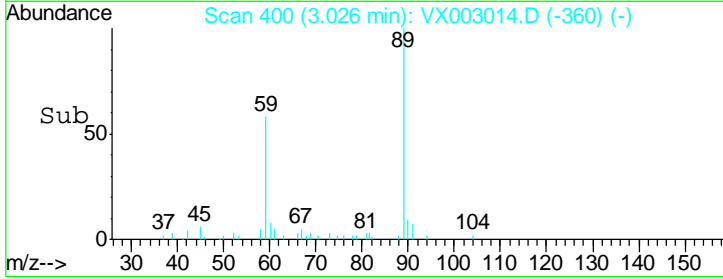
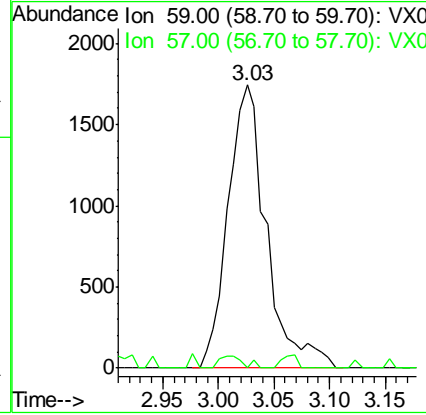
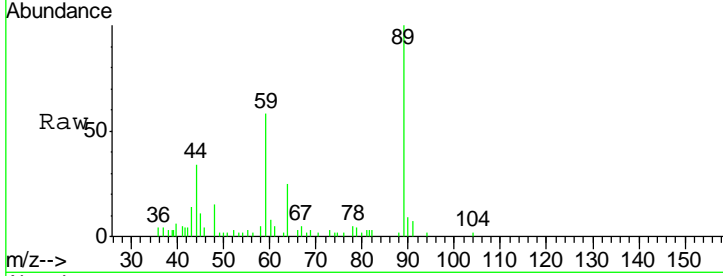




#11
 Tert butyl alcohol
 Concen: 5.22 ug/l
 RT: 3.03 min Scan# 400
 Delta R.T. -0.05 min
 Lab File: VX003014.D
 Acq: 29 Jun 2018 05:22

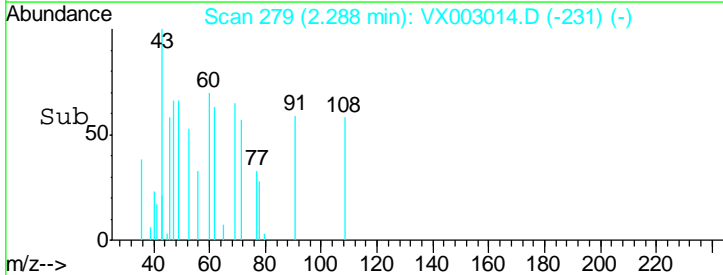
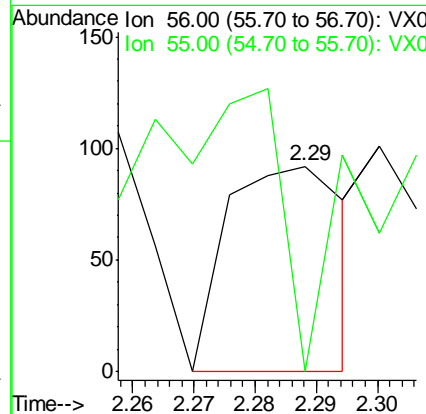
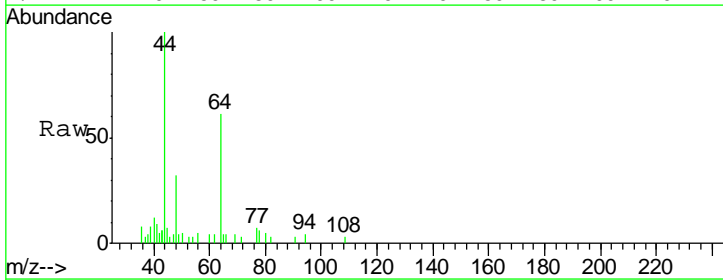
Instrument :
 MSVOA_X
 ClientSampled :
 MW-13

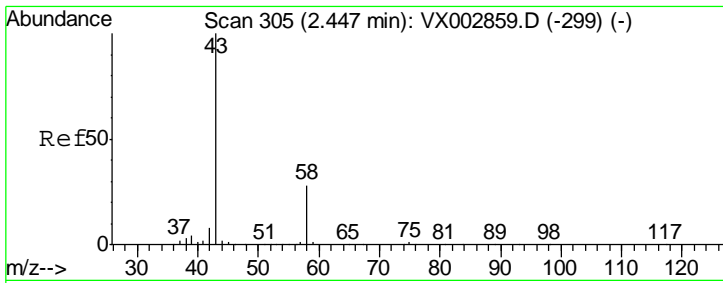
Tgt Ion: 59 Resp: 4159
 Ion Ratio Lower Upper
 59 100
 57 2.8 8.2 12.2#



#13
 Acrolein
 Concen: 4.50 ug/l
 RT: 2.29 min Scan# 279
 Delta R.T. -0.01 min
 Lab File: VX003014.D
 Acq: 29 Jun 2018 05:22

Tgt Ion: 56 Resp: 123
 Ion Ratio Lower Upper
 56 100
 55 157.7 57.0 85.4#

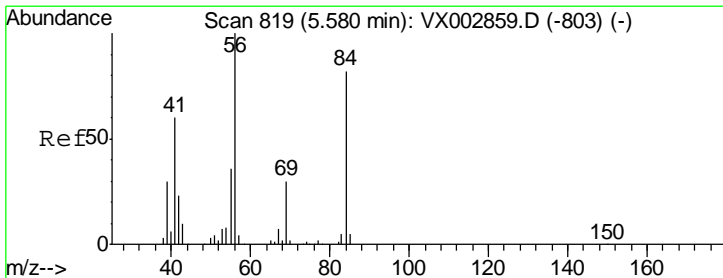
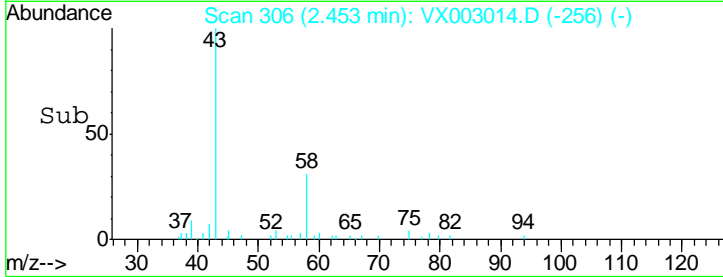
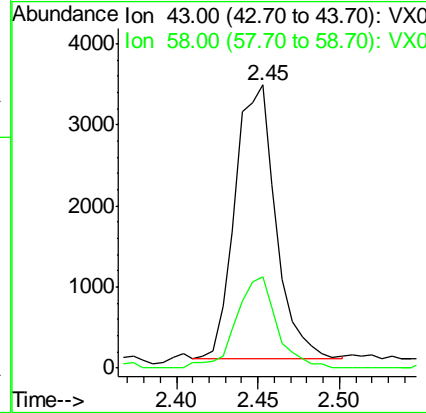
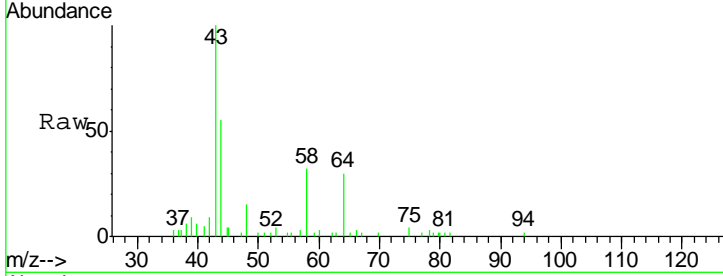




#16
 Acetone
 Concen: 3.54 ug/l
 RT: 2.45 min Scan# 306
 Delta R.T. 0.01 min
 Lab File: VX003014.D
 Acq: 29 Jun 2018 05:22

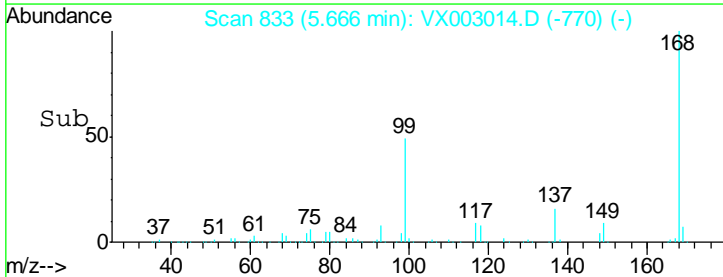
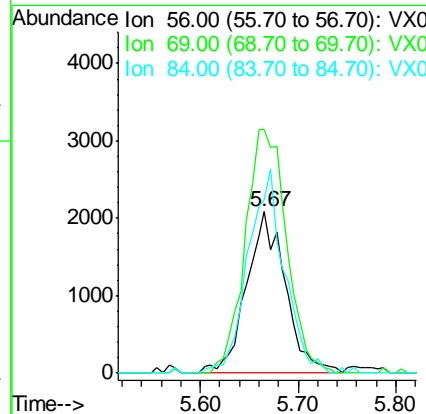
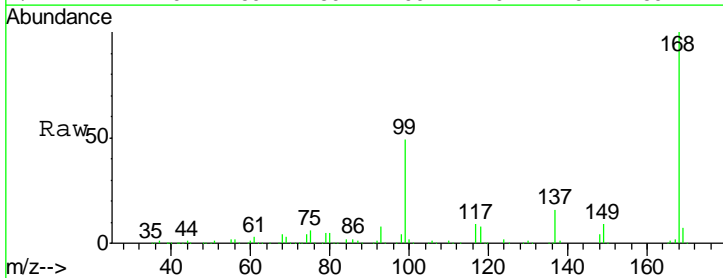
Instrument :
 MSVOA_X
 ClientSampled :
 MW-13

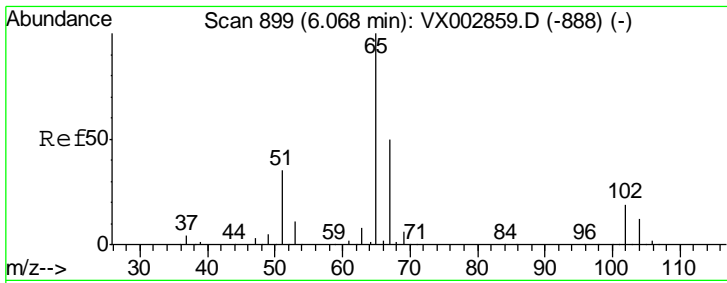
Tgt Ion	Resp	Lower	Upper
43	100		
58	33.5	22.1	33.1#



#31
 Cyclohexane
 Concen: 1.16 ug/l
 RT: 5.67 min Scan# 833
 Delta R.T. 0.09 min
 Lab File: VX003014.D
 Acq: 29 Jun 2018 05:22

Tgt Ion	Resp	Lower	Upper
56	100		
69	150.8	23.7	35.5#
84	107.2	64.1	96.1#

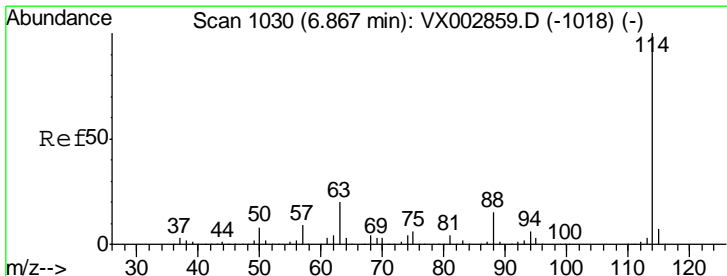
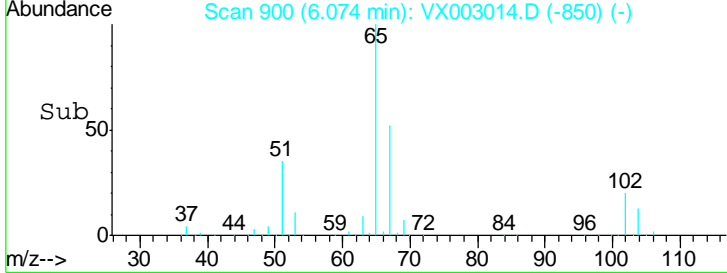
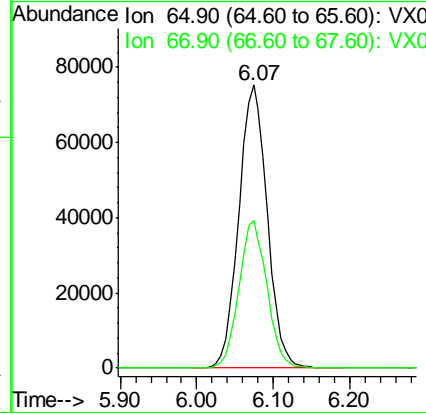
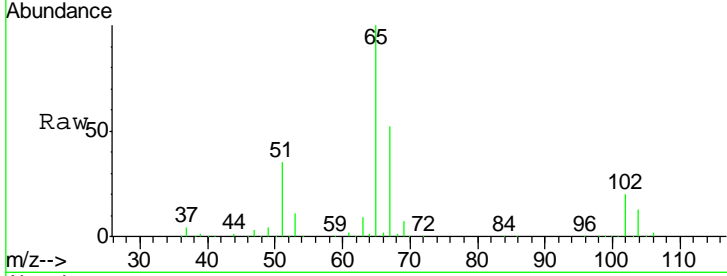




#33
 1,2-Dichloroethane-d4
 Concen: 48.44 ug/l
 RT: 6.07 min Scan# 900
 Delta R.T. 0.01 min
 Lab File: VX003014.D
 Acq: 29 Jun 2018 05:22

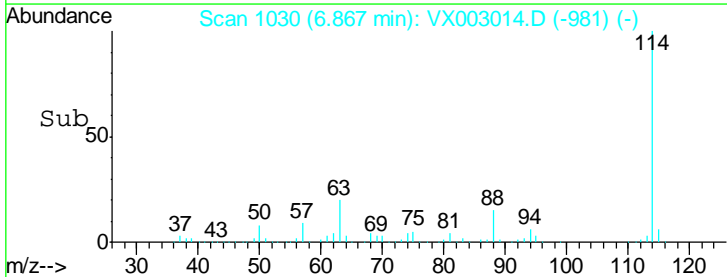
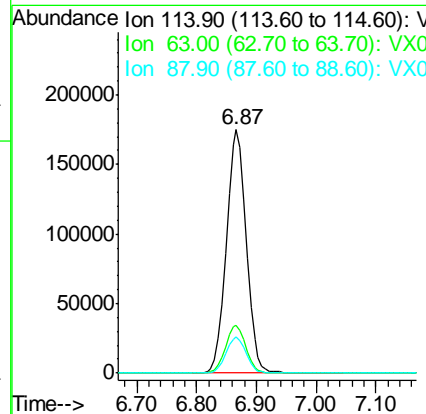
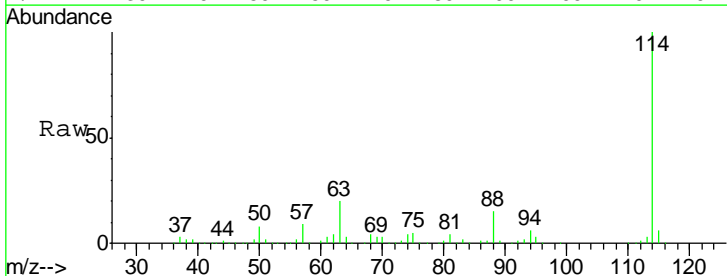
Instrument :
 MSVOA_X
 ClientSampled :
 MW-13

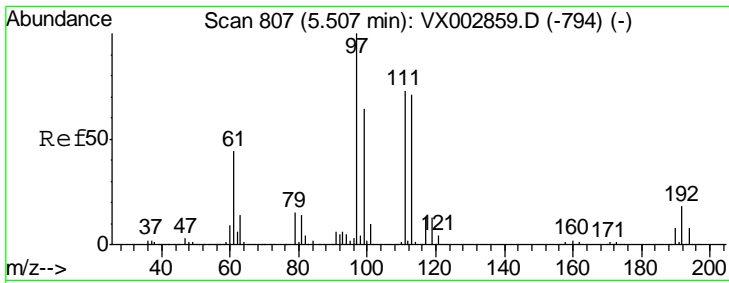
Tgt Ion	Resp	Lower	Upper
65	193855		
67	51.3	0.0	102.6



#34
 1,4-Difluorobenzene
 Concen: 50.00 ug/l
 RT: 6.87 min Scan# 1030
 Delta R.T. -0.00 min
 Lab File: VX003014.D
 Acq: 29 Jun 2018 05:22

Tgt Ion	Resp	Lower	Upper
114	407510		
63	19.8	0.0	41.4
88	14.9	0.0	30.0

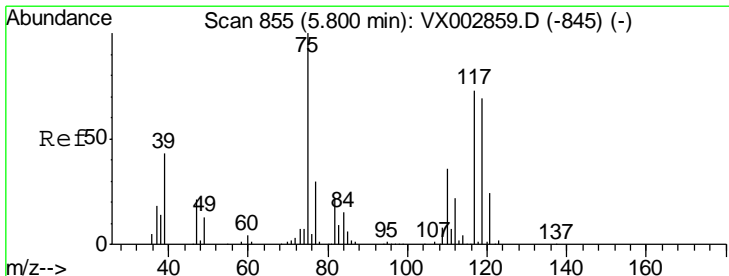
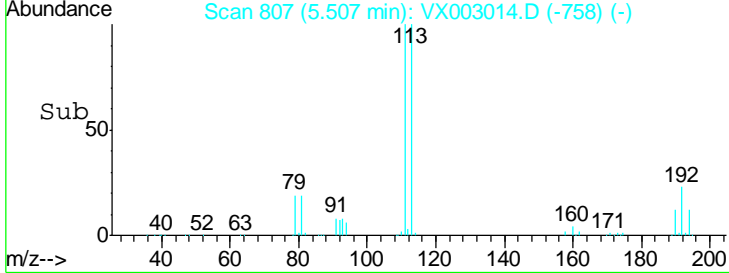
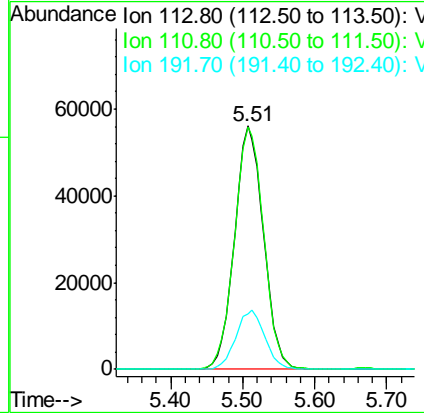
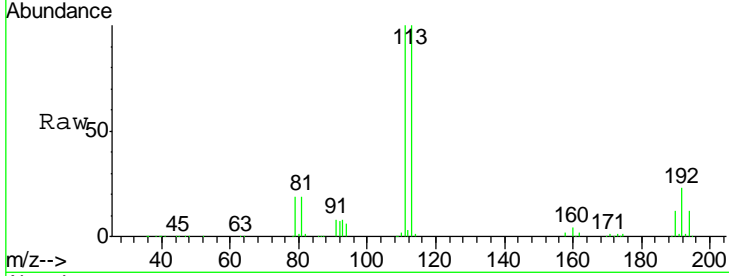




#35
 Dibromofluoromethane
 Concen: 48.56 ug/l
 RT: 5.51 min Scan# 807
 Delta R.T. -0.00 min
 Lab File: VX003014.D
 Acq: 29 Jun 2018 05:22

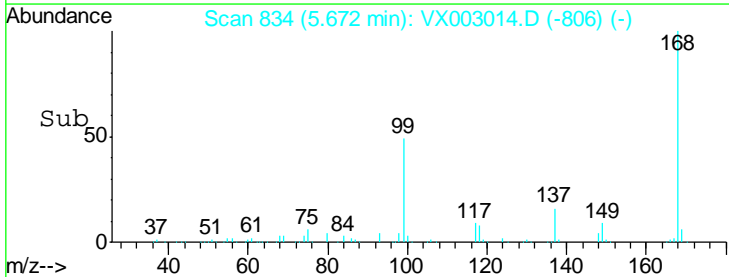
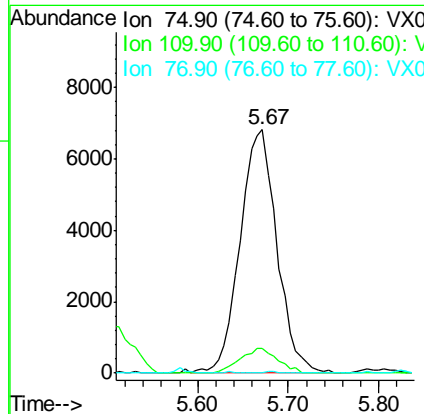
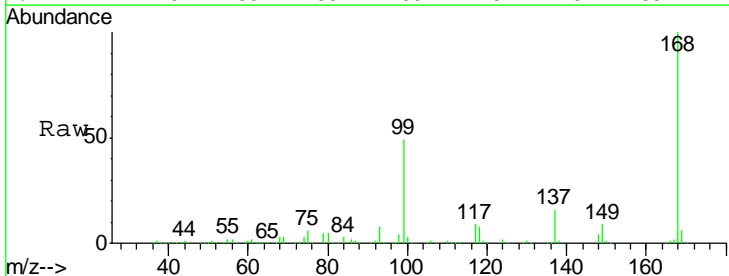
Instrument :
 MSVOA_X
 ClientSampled :
 MW-13

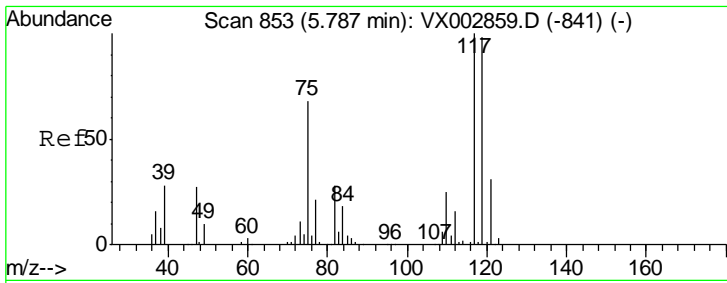
Tgt Ion	Resp	Lower	Upper
113	156720		
111	100.6	81.4	122.0
192	24.3	19.1	28.7



#36
 1,1-Dichloropropene
 Concen: 4.29 ug/l
 RT: 5.67 min Scan# 834
 Delta R.T. -0.13 min
 Lab File: VX003014.D
 Acq: 29 Jun 2018 05:22

Tgt Ion	Resp	Lower	Upper
75	19170		
110	10.3	18.1	54.4#
77	0.2	24.3	36.5#

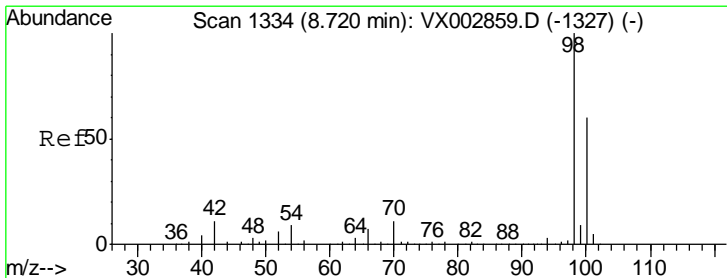
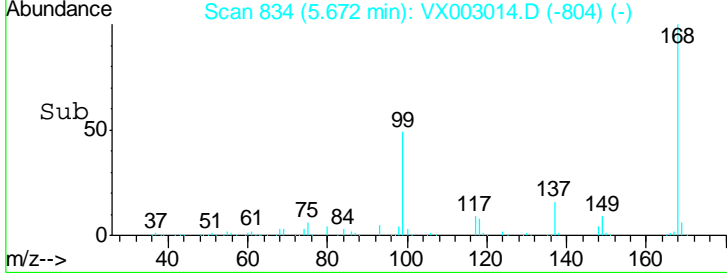
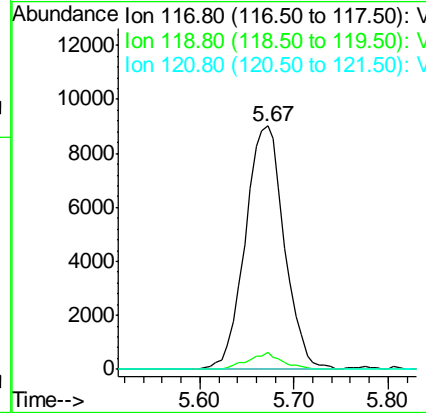
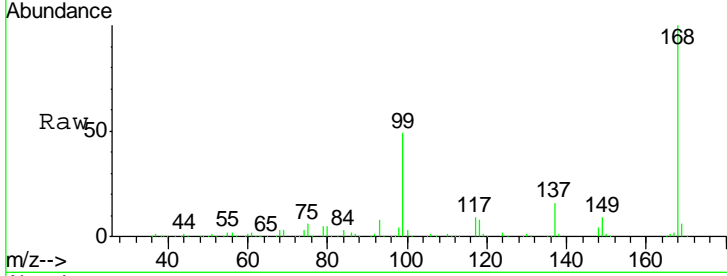




#38
 Carbon Tetrachloride
 Concen: 5.33 ug/l
 RT: 5.67 min Scan# 834
 Delta R.T. -0.12 min
 Lab File: VX003014.D
 Acq: 29 Jun 2018 05:22

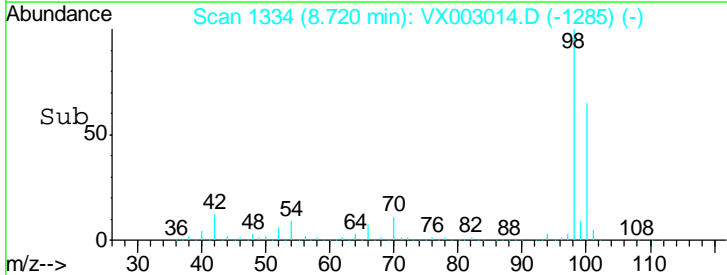
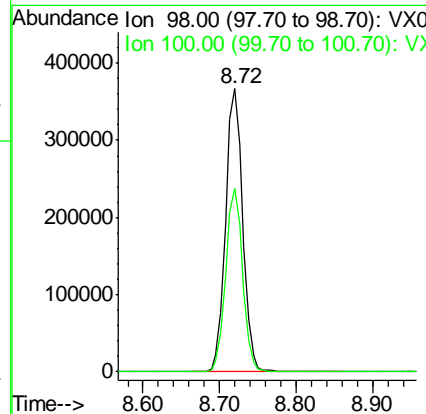
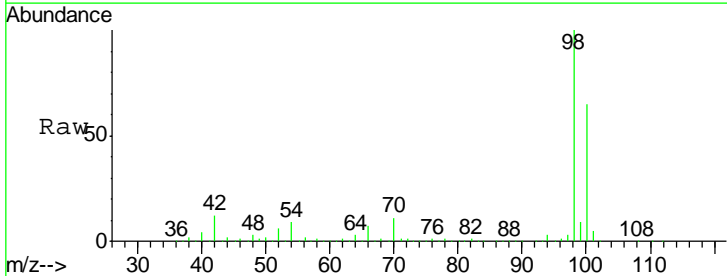
Instrument :
 MSVOA_X
 ClientSampled :
 MW-13

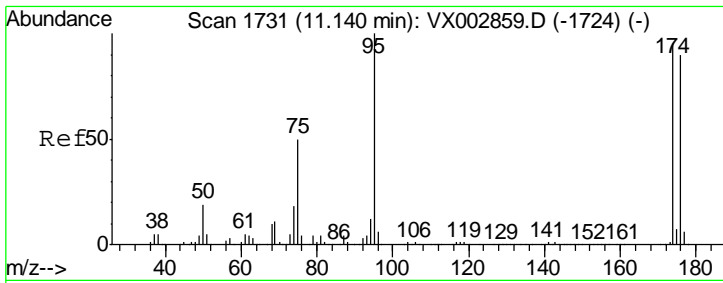
Tgt Ion	Resp	Lower	Upper
117	100		
119	6.8	77.4	116.0#
121	0.0	24.4	36.6#



#50
 Toluene-d8
 Concen: 48.26 ug/l
 RT: 8.72 min Scan# 1334
 Delta R.T. 0.00 min
 Lab File: VX003014.D
 Acq: 29 Jun 2018 05:22

Tgt Ion	Resp	Lower	Upper
98	100		
100	63.9	50.9	76.3

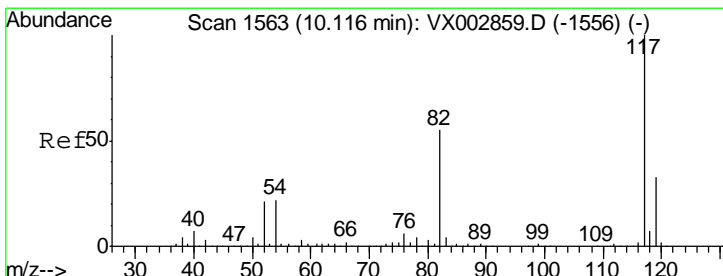
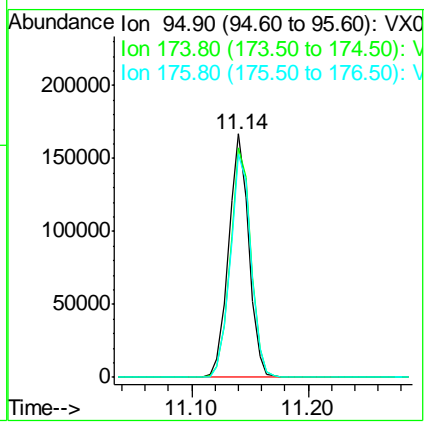
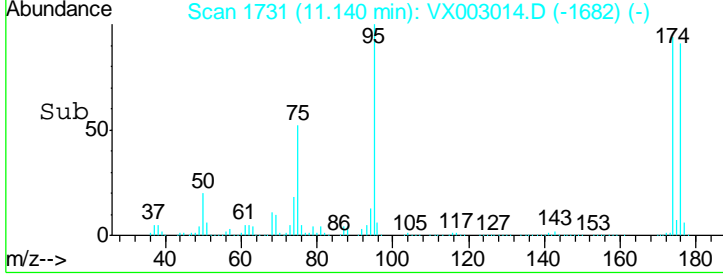
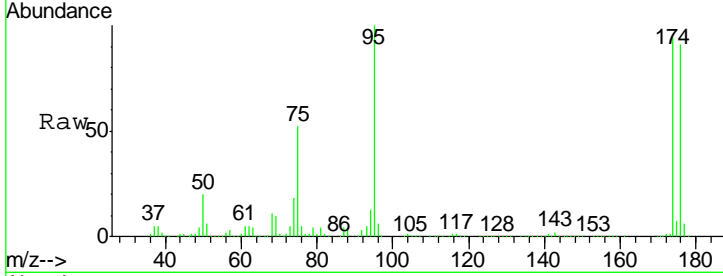




#62
 4-Bromofluorobenzene
 Concen: 44.07 ug/l
 RT: 11.14 min Scan# 1731
 Delta R.T. 0.00 min
 Lab File: VX003014.D
 Acq: 29 Jun 2018 05:22

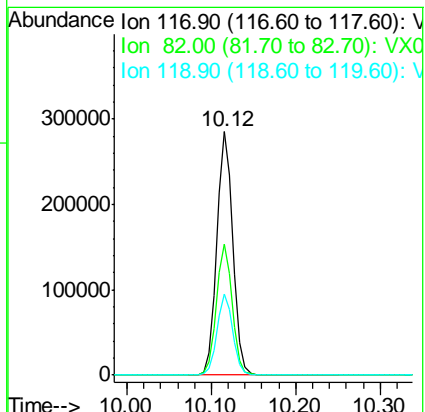
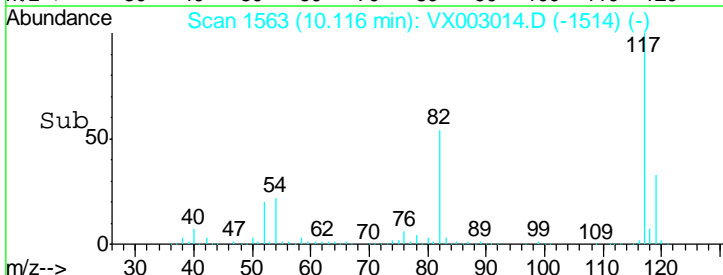
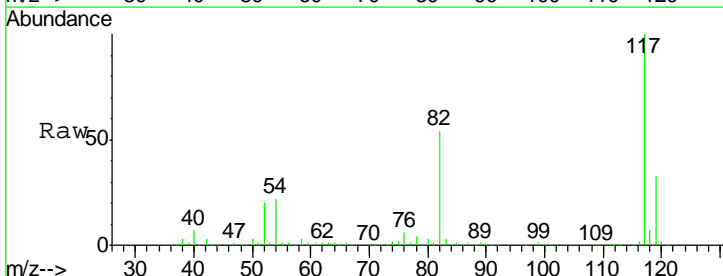
Instrument : MSVOA_X
 ClientSampled : MW-13

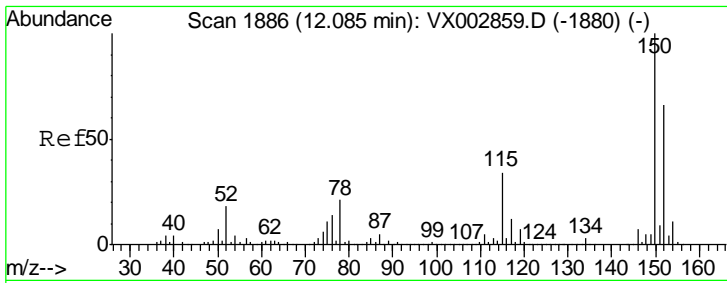
Tgt Ion	Resp	Lower	Upper
95	100		
174	97.0	0.0	187.4
176	94.5	0.0	181.0



#63
 Chlorobenzene-d5
 Concen: 50.00 ug/l
 RT: 10.12 min Scan# 1563
 Delta R.T. -0.00 min
 Lab File: VX003014.D
 Acq: 29 Jun 2018 05:22

Tgt Ion	Resp	Lower	Upper
117	100		
82	53.9	45.0	67.4
119	33.2	25.8	38.6

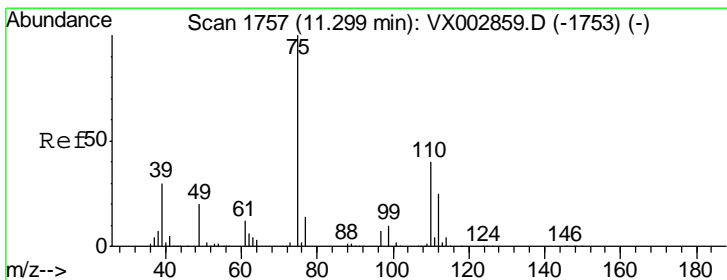
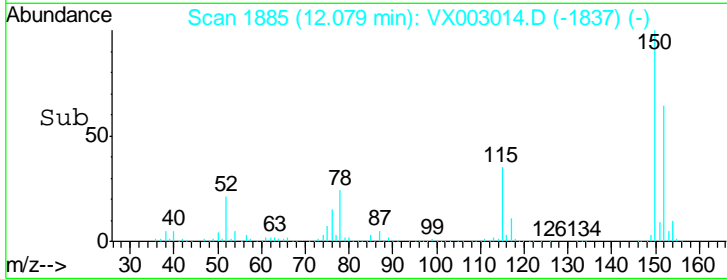
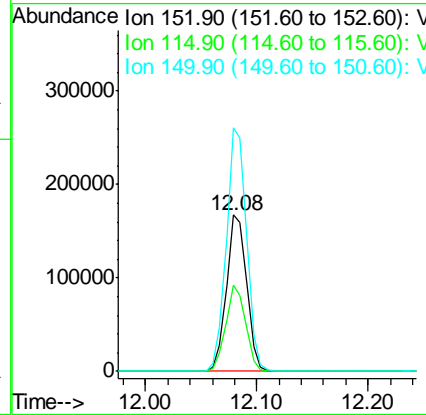
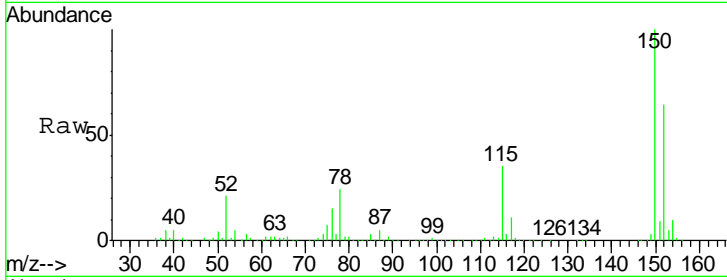




#72
 1,4-Dichlorobenzene-d4
 Concen: 50.00 ug/l
 RT: 12.08 min Scan# 1885
 Delta R.T. -0.01 min
 Lab File: VX003014.D
 Acq: 29 Jun 2018 05:22

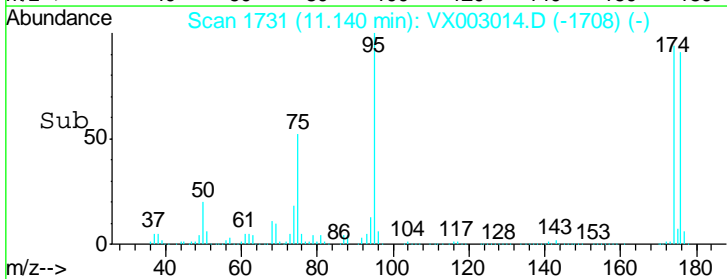
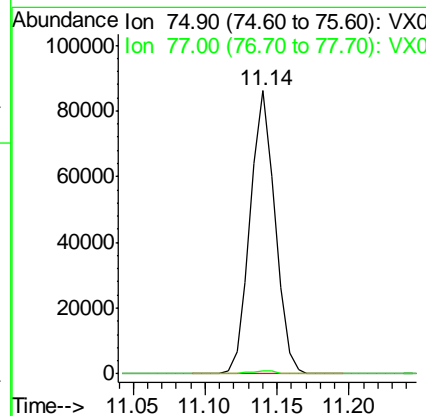
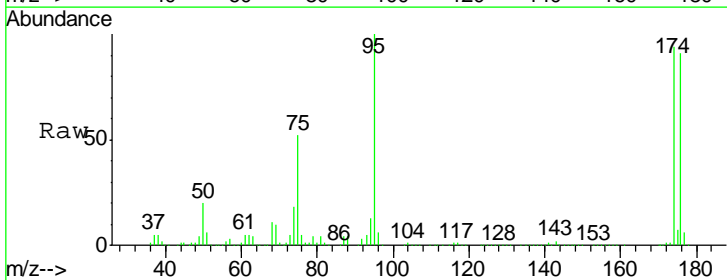
Instrument :
 MSVOA_X
 ClientSampled :
 MW-13

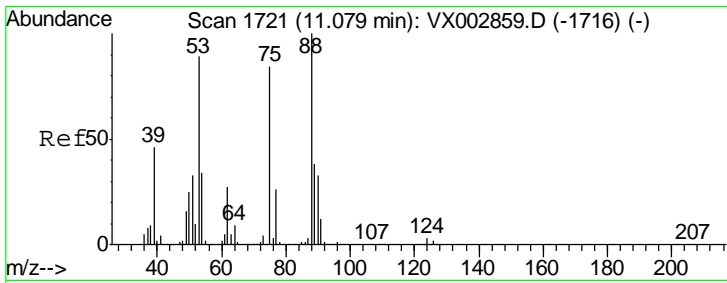
Tgt Ion	Resp	Lower	Upper
152	100		
115	53.7	40.1	120.2
150	155.5	0.0	347.2



#76
 1,2,3-Trichloropropane
 Concen: 26.95 ug/l
 RT: 11.14 min Scan# 1731
 Delta R.T. -0.16 min
 Lab File: VX003014.D
 Acq: 29 Jun 2018 05:22

Tgt Ion	Resp	Lower	Upper
75	100		
77	1.4	22.8	68.3





#81
 trans-1,4-Dichloro-2-butene
 Concen: 76.28 ug/l
 RT: 11.14 min Scan# 1731
 Delta R.T. 0.06 min
 Lab File: VX003014.D
 Acq: 29 Jun 2018 05:22

Instrument :
 MSVOA_X
 ClientSampled :
 MW-13

Tot Ion	Resp	Lower	Upper
75	100		
53	0.2	86.8	130.2#
89	0.0	38.2	57.2#

