

Data Path : Z:\VOASRV\HPCHEM1\MSVOA X\DATA\VX062818\
 Data File : VX003018.D
 Acq On : 29 Jun 2018 07:08
 Operator : JC/MD
 Sample : J3720-07
 Misc : 5.0mL/MSVOA X/WATER
 ALS Vial : 45 Sample Multiplier: 1

Instrument :
 MSVOA_X
 ClientSampled :
 MW-20

Integration Parameters: RTEINT.P
 Integrator: RTE
 Smoothing : ON
 Sampling : 1
 Start Thrs: 0.2
 Stop Thrs : 0

Filtering: 5
 Min Area: 3 % of largest Peak
 Max Peaks: 100
 Peak Location: TOP

If leading or trailing edge < 100 prefer < Baseline drop else tangent >
 Peak separation: 5

Method : Z:\VOASRV\HPCHEM1\MSVOA_X\METHOD\82X062518W.M
 Title : SW846 8260

Signal : TIC

peak #	R.T. min	first scan	max scan	last scan	PK TY	peak height	corr. area	corr. % max.	% of total
1	1.075	76	80	93	rBV	1252449	1541738	100.00%	14.940%
2	1.276	108	113	126	rBV	83210	141505	9.18%	1.371%
3	1.404	130	134	144	rVB	10955	28498	1.85%	0.276%
4	2.617	327	333	341	rVB	31714	58382	3.79%	0.566%
5	5.507	794	807	822	rBV	191351	552834	35.86%	5.357%
6	5.665	822	833	847	rVV	287583	807212	52.36%	7.822%
7	6.074	889	900	913	rBV	203579	532190	34.52%	5.157%
8	6.866	1017	1030	1042	rBV	411501	960086	62.27%	9.303%
9	8.720	1325	1334	1344	rBV	1002810	1541525	99.99%	14.938%
10	10.116	1556	1563	1573	rBV2	876873	1321727	85.73%	12.808%
11	11.140	1724	1731	1737	rBV	899770	1114752	72.30%	10.802%
12	11.774	1828	1835	1839	rBV	13091	19932	1.29%	0.193%
13	12.079	1880	1885	1896	rVB	1048756	1350486	87.60%	13.087%
14	12.237	1906	1911	1914	rBV	29531	38768	2.51%	0.376%
15	12.396	1932	1937	1942	rVB	19497	28964	1.88%	0.281%
16	12.719	1984	1990	1995	rBV3	21190	34790	2.26%	0.337%
17	12.871	2011	2015	2021	rVB	14156	21295	1.38%	0.206%
18	12.963	2025	2030	2032	rBV2	12832	20694	1.34%	0.201%
19	13.463	2107	2112	2121	rBV9	10642	31001	2.01%	0.300%
20	14.274	2241	2245	2248	rBV3	9898	17728	1.15%	0.172%
21	14.377	2257	2262	2266	rBV	24857	38246	2.48%	0.371%
22	14.432	2266	2271	2276	rVV7	11678	25073	1.63%	0.243%
23	14.731	2317	2320	2325	rBV5	8833	16564	1.07%	0.161%
24	14.847	2335	2339	2344	rVB2	22391	36318	2.36%	0.352%
25	15.395	2425	2429	2436	rBV10	8161	16124	1.05%	0.156%
26	15.810	2492	2497	2503	rBV3	9583	23218	1.51%	0.225%

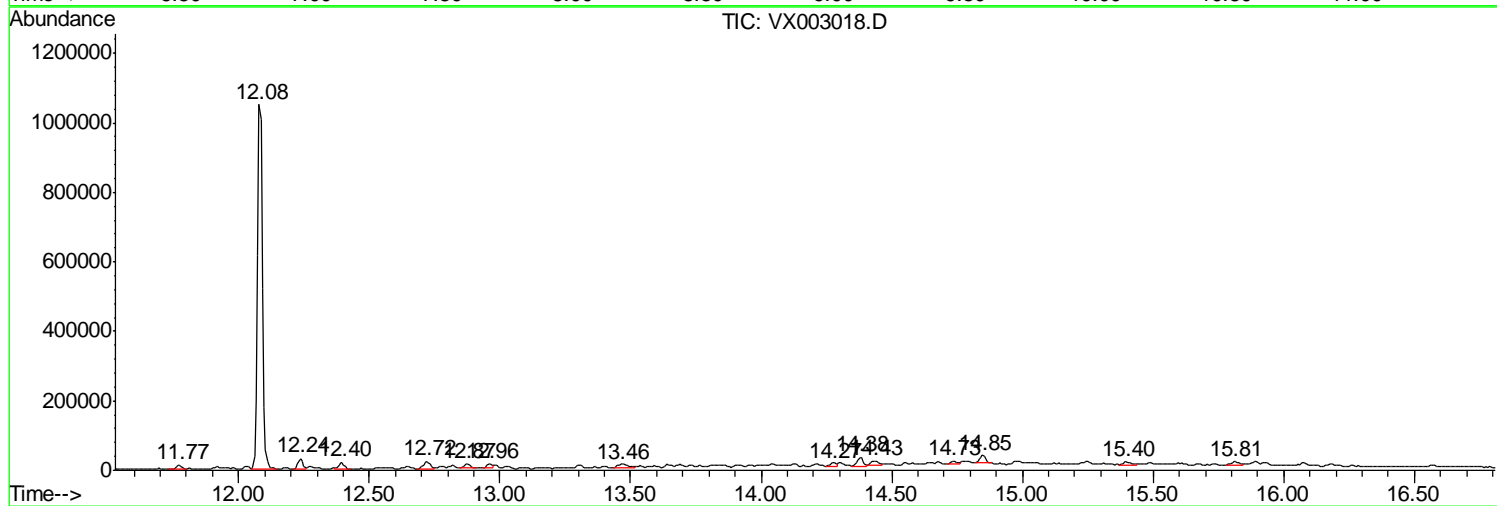
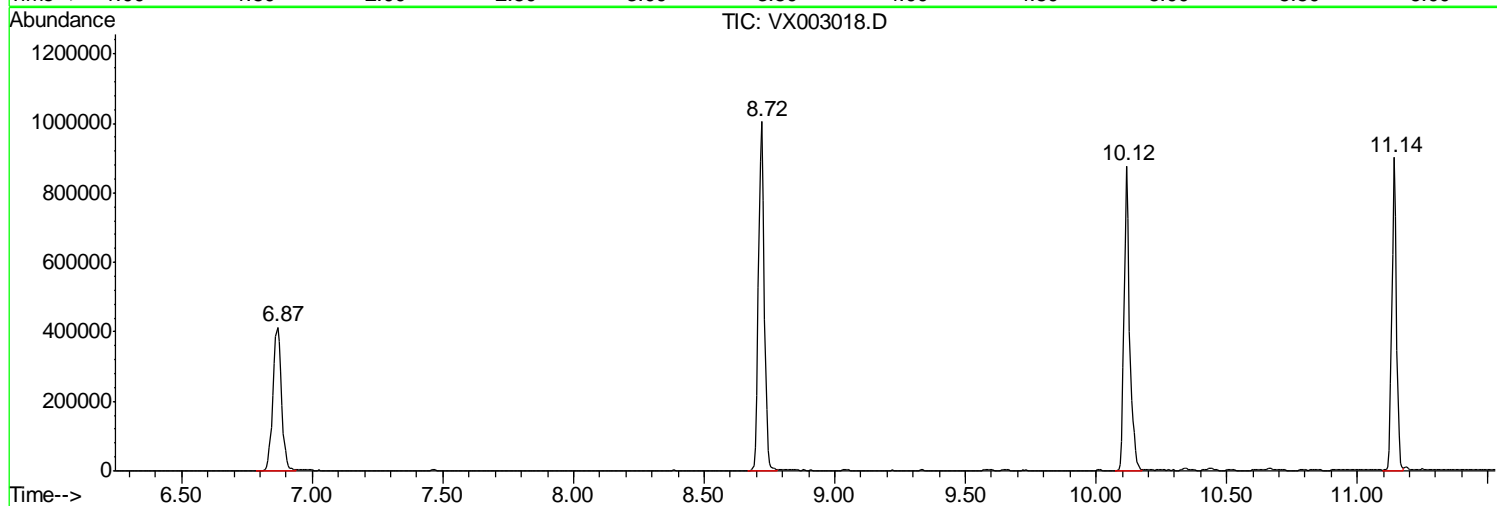
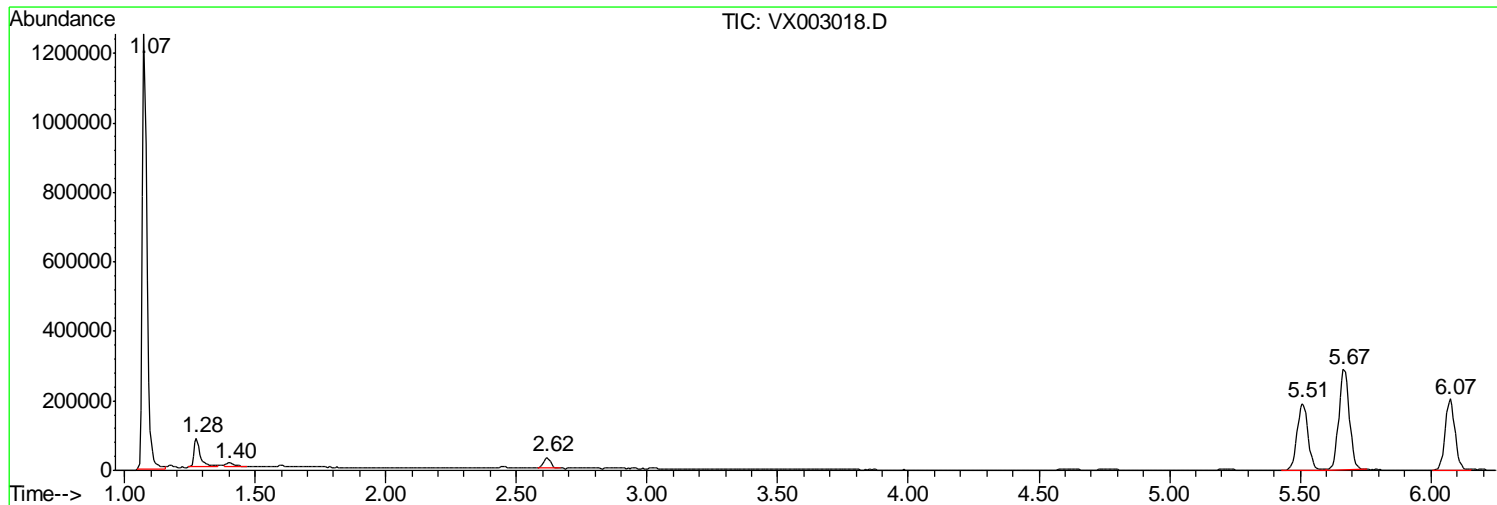
Sum of corrected areas: 10319650

Data Path : Z:\VOASRV\HPCHEM1\MSVOA X\DATA\VX062818\
 Data File : VX003018.D
 Acq On : 29 Jun 2018 07:08
 Operator : JC/MD
 Sample : J3720-07
 Misc : 5.0mL/MSVOA X/WATER
 ALS Vial : 45 Sample Multiplier: 1

Instrument :
 MSVOA_X
 ClientSampled :
 MW-20

Quant Method : Z:\VOASRV\HPCHEM1\MSVOA_X\METHOD\82X062518W.M
 Quant Title : SW846 8260

TIC Library : C:\DATABASE\NIST11.L
 TIC Integration Parameters: LSCINT.P



Data Path : Z:\VOASRV\HPCHEM1\MSVOA X\DATA\VX062818\
 Data File : VX003018.D
 Acq On : 29 Jun 2018 07:08
 Operator : JC/MD
 Sample : J3720-07
 Misc : 5.0mL/MSVOA X/WATER
 ALS Vial : 45 Sample Multiplier: 1

Instrument :
 MSVOA_X
 ClientSampled :
 MW-20

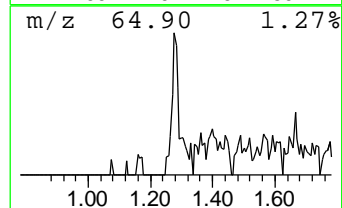
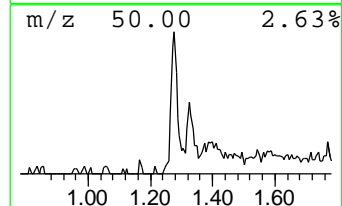
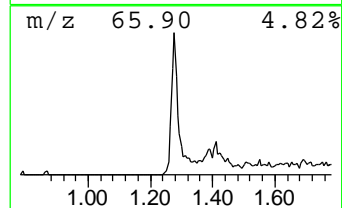
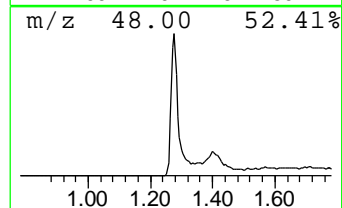
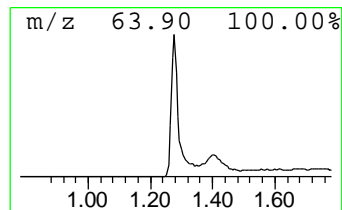
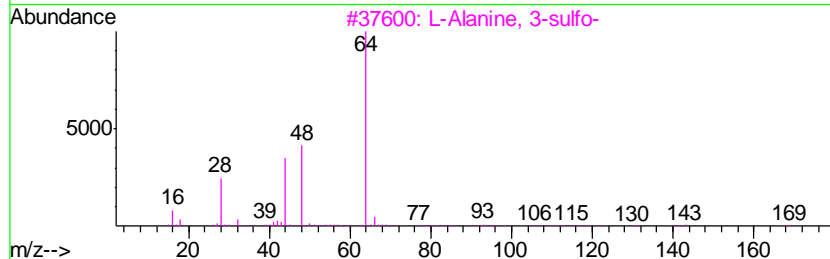
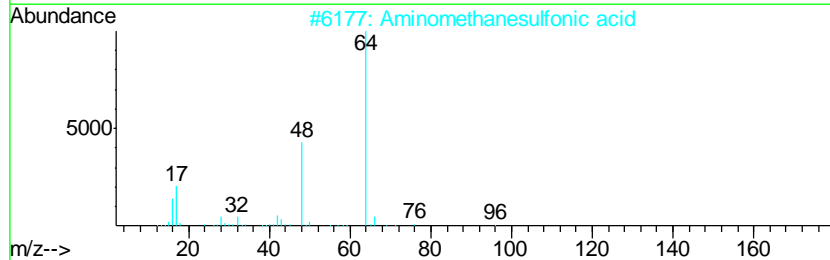
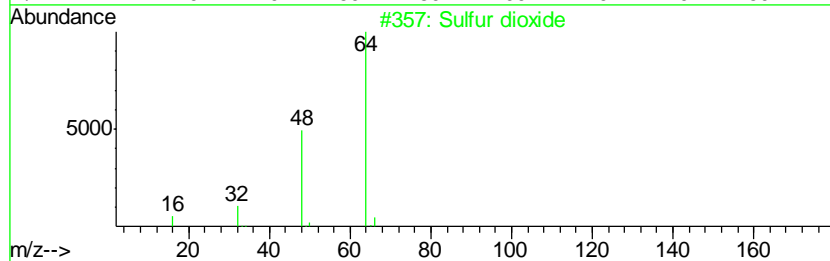
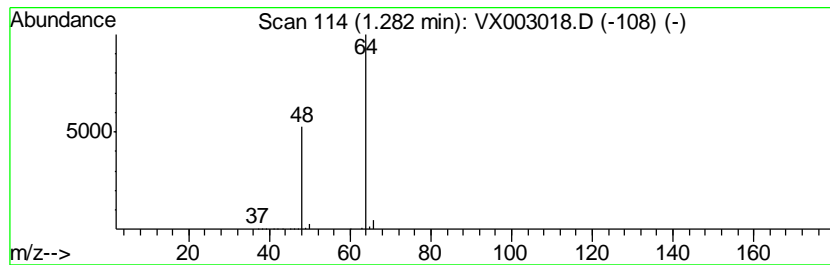
Quant Method : Z:\VOASRV\HPCHEM1\MSVOA_X\METHOD\82X062518W.M
 Quant Title : SW846 8260

TIC Library : C:\DATABASE\NIST11.L
 TIC Integration Parameters: LSCINT.P

 Peak Number 2 Sulfur dioxide Concentration Rank 2

R.T.	EstConc	Area	Relative to ISTD	R.T.
1.28	8.77 ug/l	141505	Pentafluorobenzene	5.67

Hit#	of	Tentative ID	MW	MolForm	CAS#	Qual
1	5	Sulfur dioxide	64	O2S	007446-09-5	83
2		Aminomethanesulfonic acid	111	CH5NO3S	013881-91-9	74
3		L-Alanine, 3-sulfo-	169	C3H7NO5S	000498-40-8	9
4		Ethene, 1,1-difluoro-	64	C2H2F2	000075-38-7	4
5		Ethyl Chloride	64	C2H5Cl	000075-00-3	3



Data Path : Z:\VOASRV\HPCHEM1\MSVOA_X\DATA\VX062818\
Data File : VX003018.D
Acq On : 29 Jun 2018 07:08
Operator : JC/MD
Sample : J3720-07
Misc : 5.0mL/MSVOA_X/WATER
ALS Vial : 45 Sample Multiplier: 1

Instrument :
MSVOA_X
ClientSampleId :
MW-20

Quant Method : Z:\VOASRV\HPCHEM1\MSVOA_X\METHOD\82X062518W.M
Quant Title : SW846 8260

TIC Library : C:\DATABASE\NIST11.L
TIC Integration Parameters: LSCINT.P

TIC Top Hit name	RT	EstConc	Units	Response	--Internal Standard--			
					#	RT	Resp	Conc
Sulfur dioxide	1.28	8.8	ug/l	141505	1	5.67	807212	50.0