

Data Path : Z:\voasrv\HPCHEM1\MSVOA_X\Data\VX062921\
 Data File : VX023001.D
 Acq On : 29 Jun 2021 14:21
 Operator : JC/MD
 Sample : M2875-03
 Misc : 5.0mL/MSVOA_X/WATER
 ALS Vial : 10 Sample Multiplier: 1

Instrument :
 MSVOA_X
 ClientSampled :
 MW-17

Quant Time: Jun 30 01:43:41 2021
 Quant Method : Z:\voasrv\HPCHEM1\MSVOA_X\Method\82X062321W.M
 Quant Title : SW846 8260
 QLast Update : Wed Jun 23 19:12:26 2021
 Response via : Initial Calibration

Compound	R.T.	QIon	Response	Conc	Units	Dev(Min)

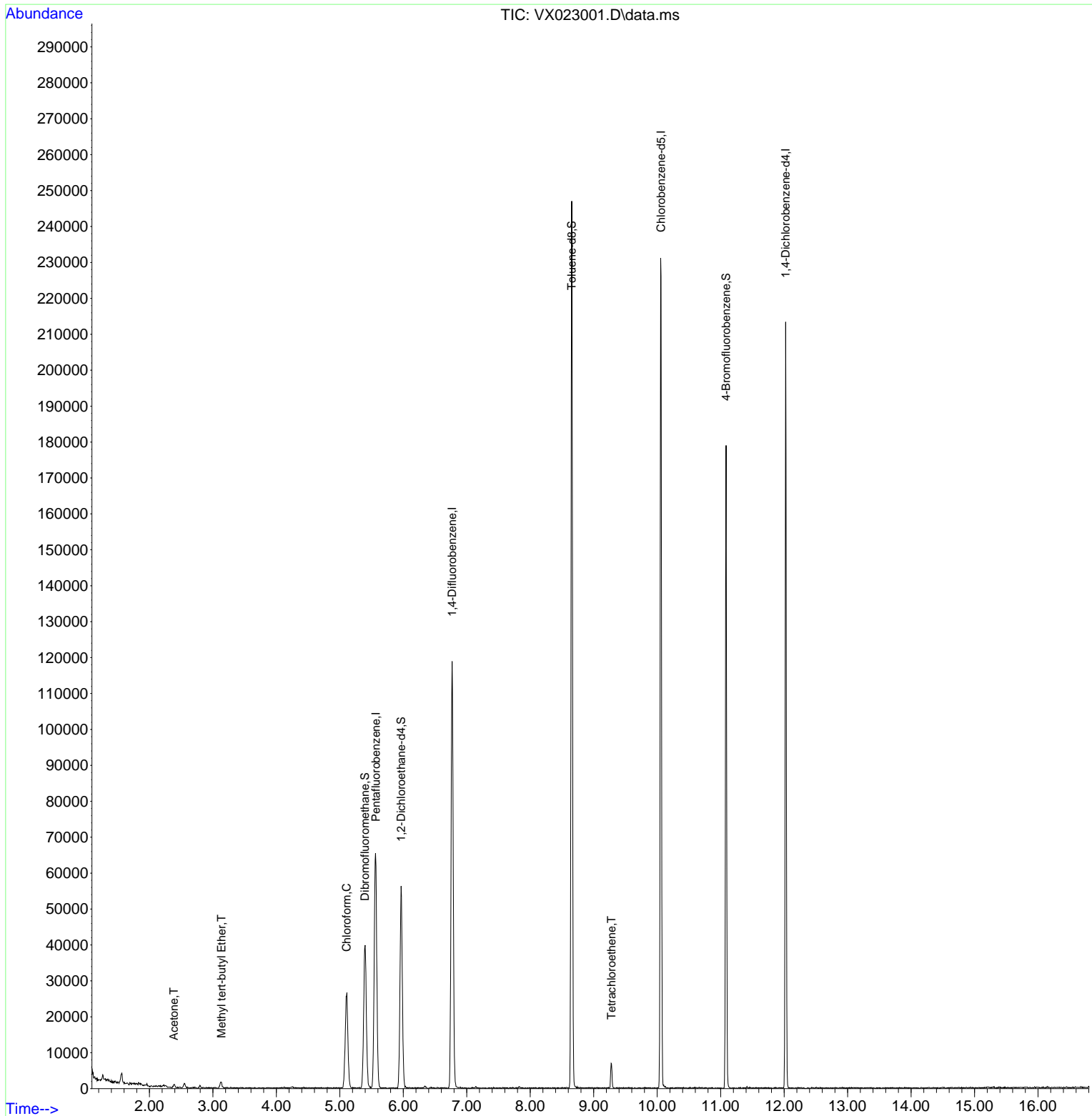
Internal Standards						
1) Pentafluorobenzene	5.568	168	53100	50.000	ug/l	0.01
34) 1,4-Difluorobenzene	6.769	114	111270	50.000	ug/l	0.00
63) Chlorobenzene-d5	10.061	117	98436	50.000	ug/l	0.00
72) 1,4-Dichlorobenzene-d4	12.024	152	36305	50.000	ug/l	0.00
System Monitoring Compounds						
33) 1,2-Dichloroethane-d4	5.964	65	50118	52.008	ug/l	0.00
Spiked Amount	50.000	Range	78 - 117	Recovery	=	104.020%
35) Dibromofluoromethane	5.397	113	34491	48.813	ug/l	0.00
Spiked Amount	50.000	Range	75 - 124	Recovery	=	97.620%
50) Toluene-d8	8.653	98	135136	48.799	ug/l	0.00
Spiked Amount	50.000	Range	92 - 112	Recovery	=	97.600%
62) 4-Bromofluorobenzene	11.085	95	46157	44.660	ug/l	0.00
Spiked Amount	50.000	Range	83 - 123	Recovery	=	89.320%
Target Compounds						
					Qvalue	
16) Acetone	2.385	43	1033	2.418	ug/l #	55
19) Methyl tert-butyl Ether	3.135	73	1864	0.755	ug/l #	82
30) Chloroform	5.104	83	29724	20.318	ug/l	96
64) Tetrachloroethene	9.281	164	1141	1.649	ug/l #	89

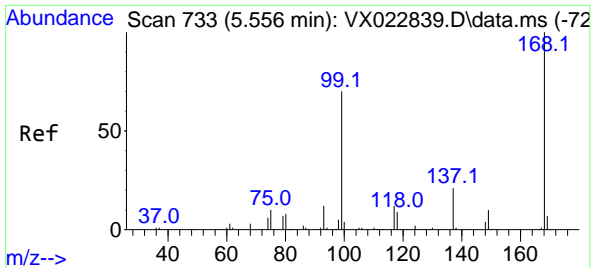
(#) = qualifier out of range (m) = manual integration (+) = signals summed

Data Path : Z:\voasrv\HPCHEM1\MSVOA_X\Data\VX062921\
 Data File : VX023001.D
 Acq On : 29 Jun 2021 14:21
 Operator : JC/MD
 Sample : M2875-03
 Misc : 5.0mL/MSVOA_X/WATER
 ALS Vial : 10 Sample Multiplier: 1

Instrument :
 MSVOA_X
 ClientSampled :
 MW-17

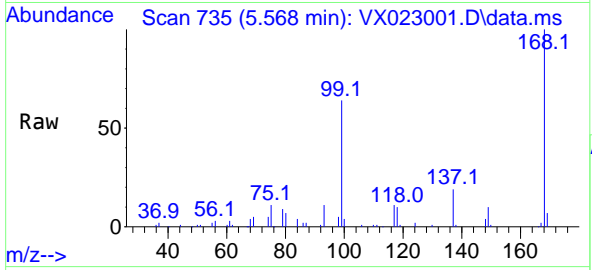
Quant Time: Jun 30 01:43:41 2021
 Quant Method : Z:\voasrv\HPCHEM1\MSVOA_X\Method\82X062321W.M
 Quant Title : SW846 8260
 QLast Update : Wed Jun 23 19:12:26 2021
 Response via : Initial Calibration



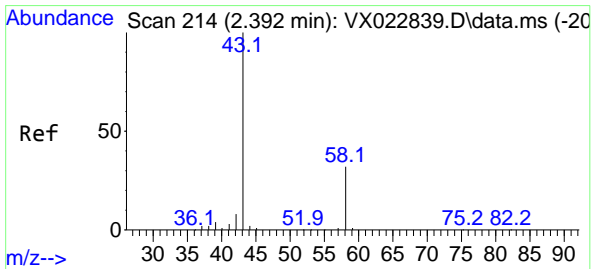
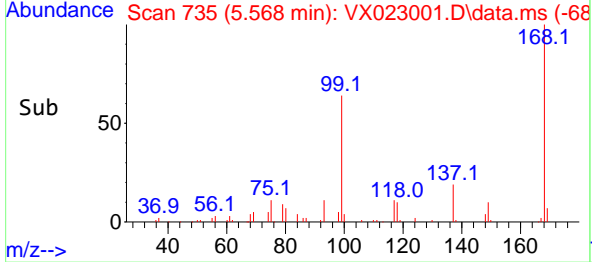
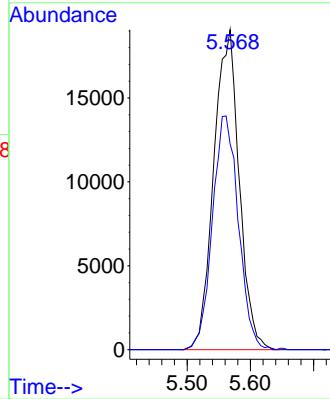


#1
 Pentafluorobenzene
 Concen: 50.000 ug/l
 RT: 5.568 min Scan# 735
 Delta R.T. 0.012 min
 Lab File: VX023001.D
 Acq: 29 Jun 2021 14:21

Instrument :
 MSVOA_X
 ClientSampled :
 MW-17

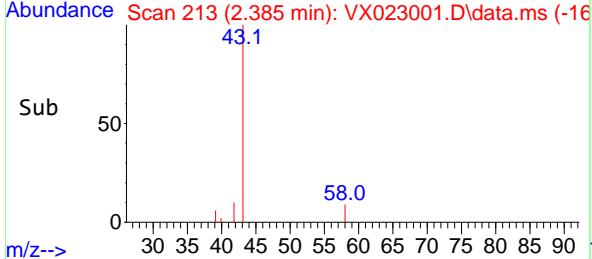
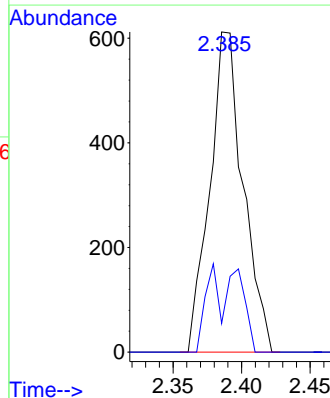
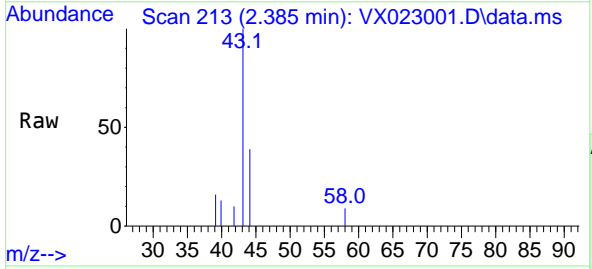


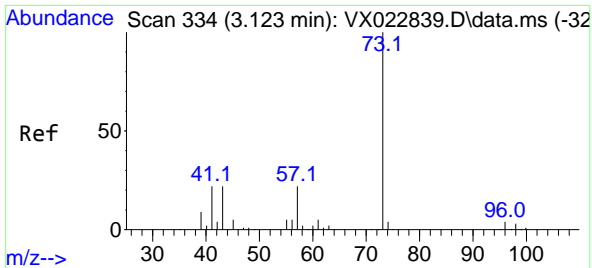
Tgt Ion:168 Resp: 53100
 Ion Ratio Lower Upper
 168 100
 99 64.2 45.8 68.6



#16
 Acetone
 Concen: 2.418 ug/l
 RT: 2.385 min Scan# 213
 Delta R.T. -0.007 min
 Lab File: VX023001.D
 Acq: 29 Jun 2021 14:21

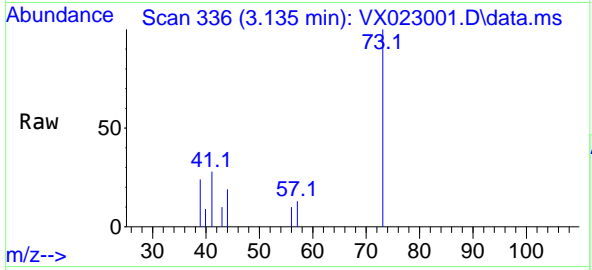
Tgt Ion: 43 Resp: 1033
 Ion Ratio Lower Upper
 43 100
 58 9.0 27.8 41.8#



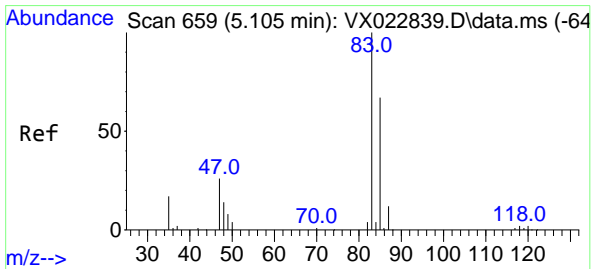
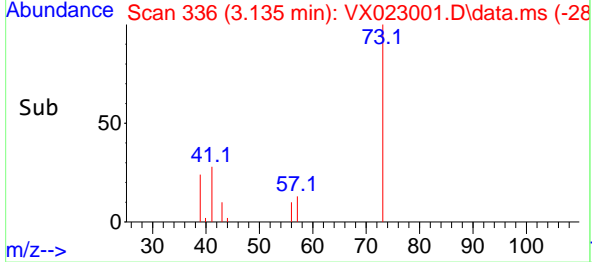
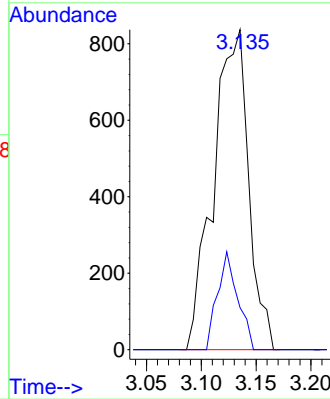


#19
 Methyl tert-butyl Ether
 Concen: 0.755 ug/l
 RT: 3.135 min Scan# 336
 Delta R.T. 0.012 min
 Lab File: VX023001.D
 Acq: 29 Jun 2021 14:21

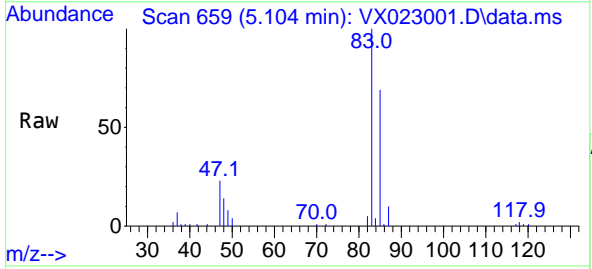
Instrument :
 MSVOA_X
 ClientSampled :
 MW-17



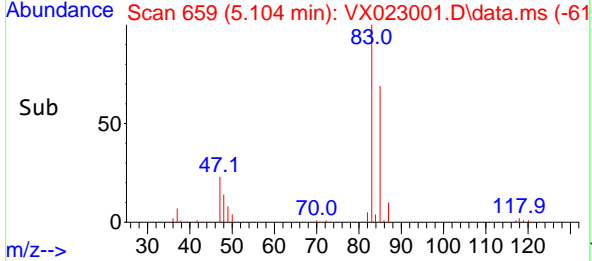
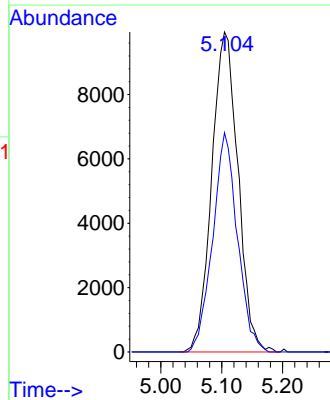
Tgt Ion: 73 Resp: 1864
 Ion Ratio Lower Upper
 73 100
 57 13.1 17.1 25.7#

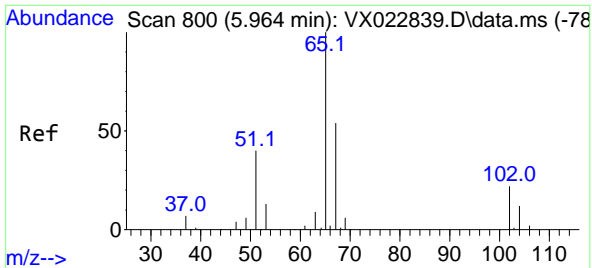


#30
 Chloroform
 Concen: 20.318 ug/l
 RT: 5.104 min Scan# 659
 Delta R.T. -0.001 min
 Lab File: VX023001.D
 Acq: 29 Jun 2021 14:21



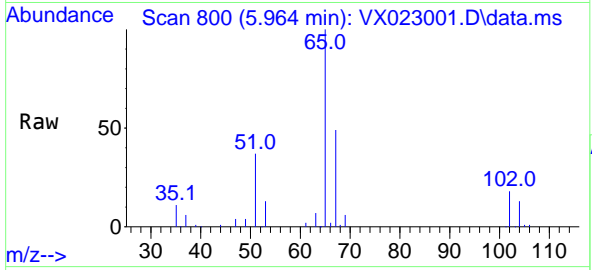
Tgt Ion: 83 Resp: 29724
 Ion Ratio Lower Upper
 83 100
 85 68.5 52.0 78.0



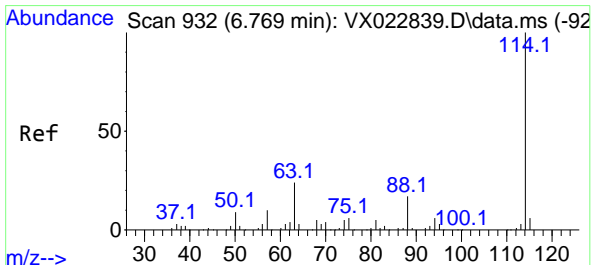
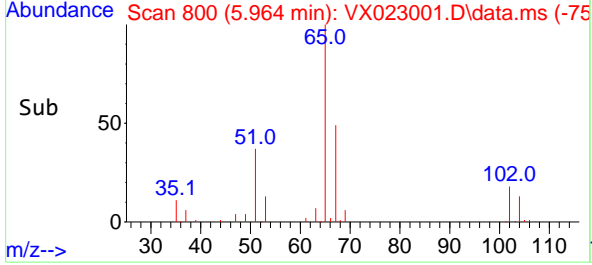
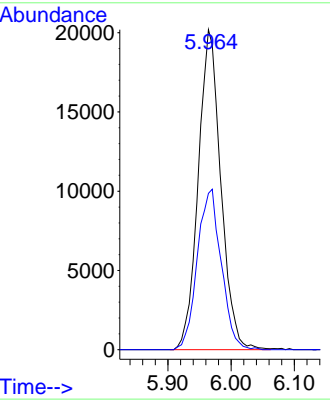


#33
 1,2-Dichloroethane-d4
 Concen: 52.008 ug/l
 RT: 5.964 min Scan# 800
 Delta R.T. 0.000 min
 Lab File: VX023001.D
 Acq: 29 Jun 2021 14:21

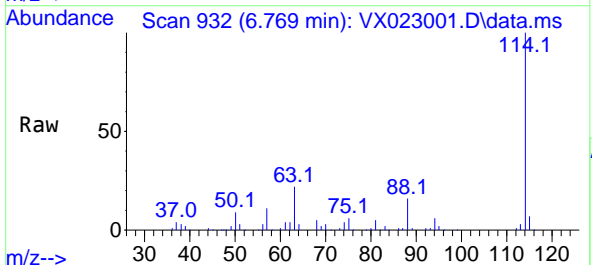
Instrument :
 MSVOA_X
 ClientSampled :
 MW-17



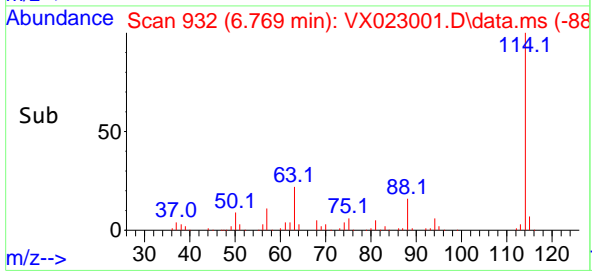
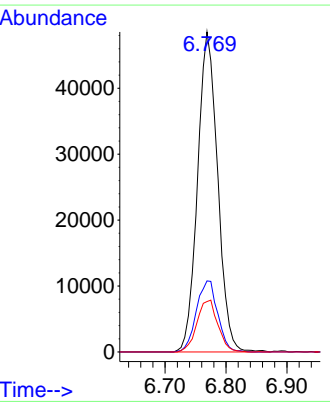
Tgt Ion: 65 Resp: 50118
 Ion Ratio Lower Upper
 65 100
 67 53.1 0.0 105.4

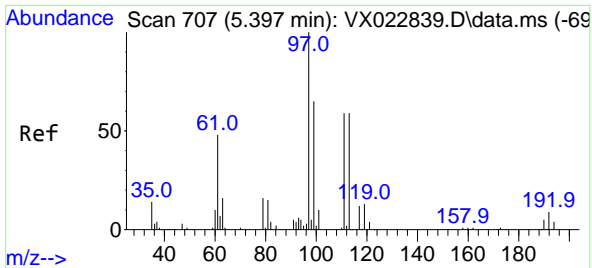


#34
 1,4-Difluorobenzene
 Concen: 50.000 ug/l
 RT: 6.769 min Scan# 932
 Delta R.T. -0.000 min
 Lab File: VX023001.D
 Acq: 29 Jun 2021 14:21



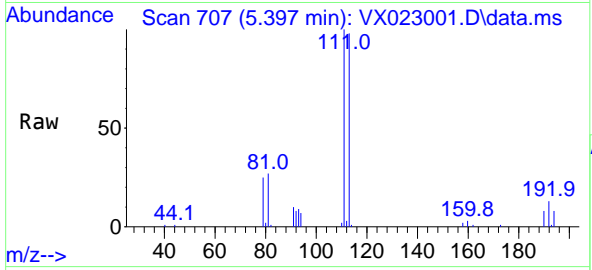
Tgt Ion: 114 Resp: 111270
 Ion Ratio Lower Upper
 114 100
 63 22.2 0.0 40.8
 88 15.8 0.0 32.8



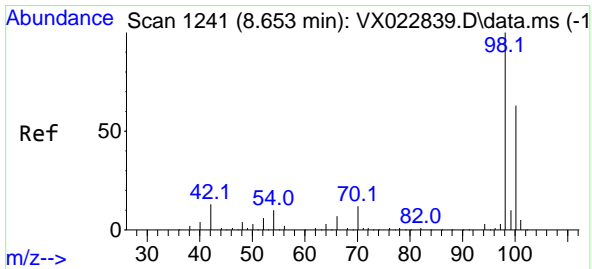
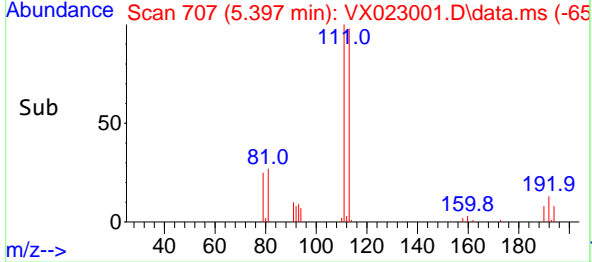
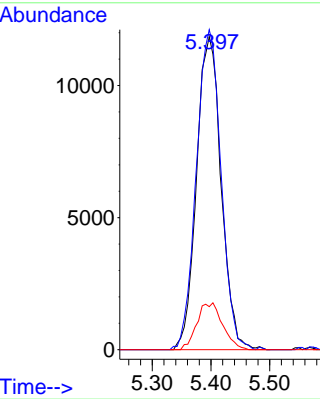


#35
 Dibromofluoromethane
 Concen: 48.813 ug/l
 RT: 5.397 min Scan# 707
 Delta R.T. 0.000 min
 Lab File: VX023001.D
 Acq: 29 Jun 2021 14:21

Instrument :
 MSVOA_X
 ClientSampled :
 MW-17

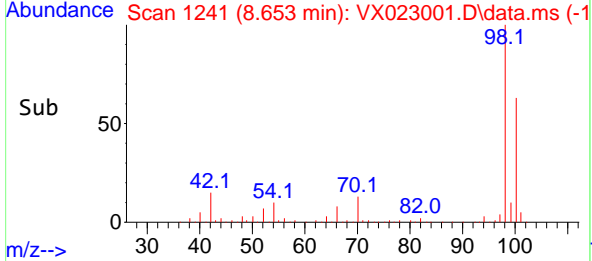
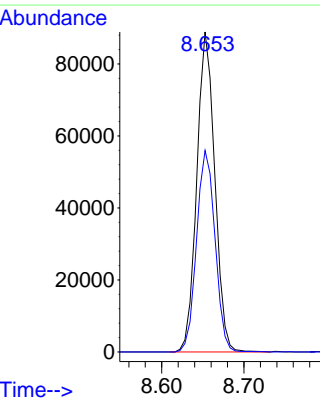
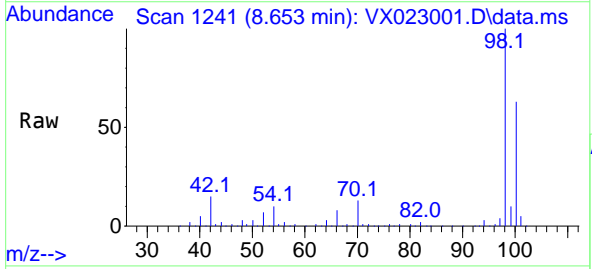


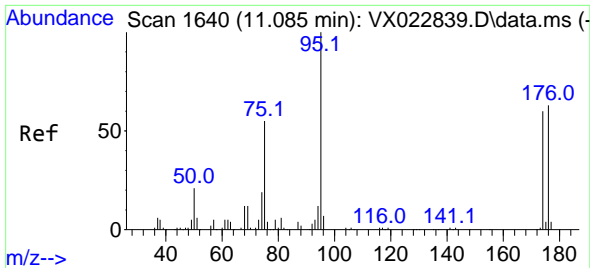
Tgt Ion:113 Resp: 34491
 Ion Ratio Lower Upper
 113 100
 111 103.0 81.9 122.9
 192 15.7 16.7 25.1#



#50
 Toluene-d8
 Concen: 48.799 ug/l
 RT: 8.653 min Scan# 1241
 Delta R.T. -0.000 min
 Lab File: VX023001.D
 Acq: 29 Jun 2021 14:21

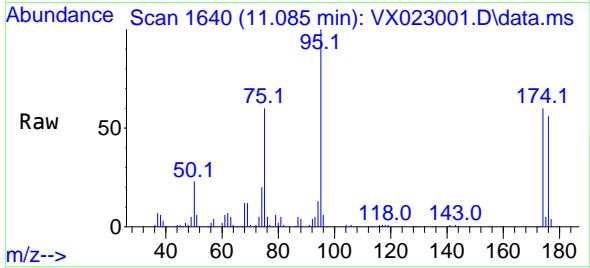
Tgt Ion: 98 Resp: 135136
 Ion Ratio Lower Upper
 98 100
 100 64.6 51.9 77.9



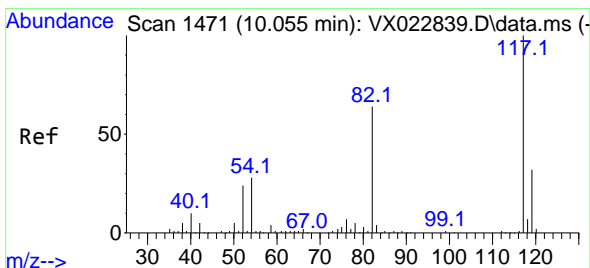
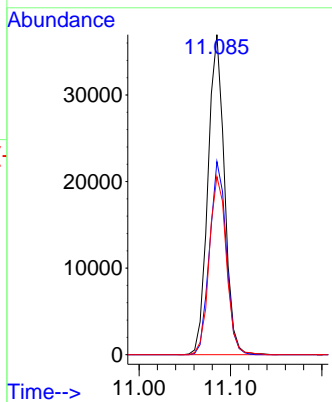
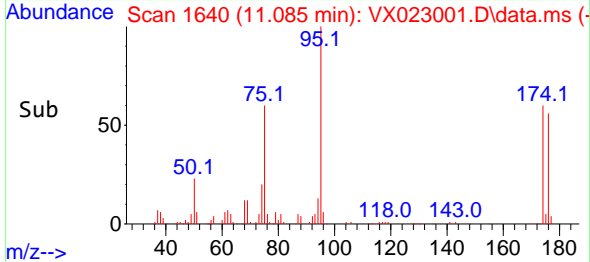


#62
 4-Bromofluorobenzene
 Concen: 44.660 ug/l
 RT: 11.085 min Scan# 1640
 Delta R.T. 0.000 min
 Lab File: VX023001.D
 Acq: 29 Jun 2021 14:21

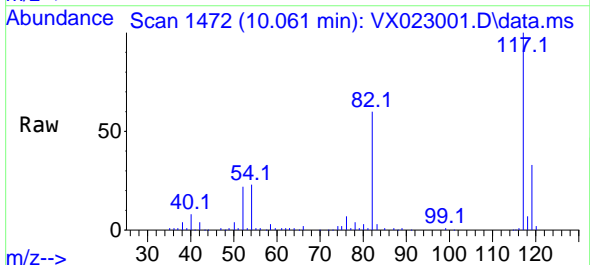
Instrument :
 MSVOA_X
 ClientSampled :
 MW-17



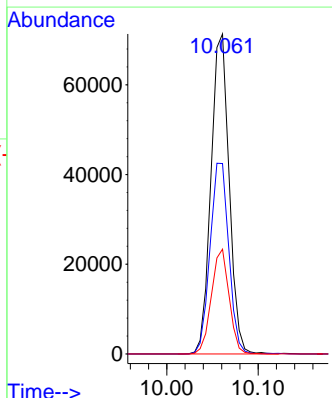
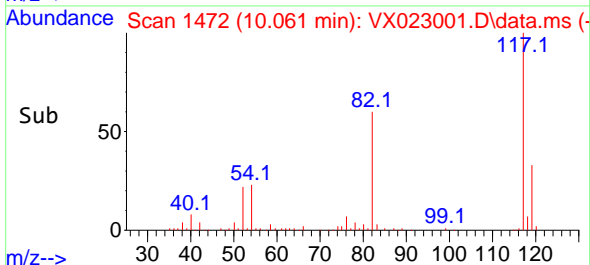
Tgt Ion: 95 Resp: 46157
 Ion Ratio Lower Upper
 95 100
 174 60.8 0.0 154.6
 176 57.8 0.0 155.8

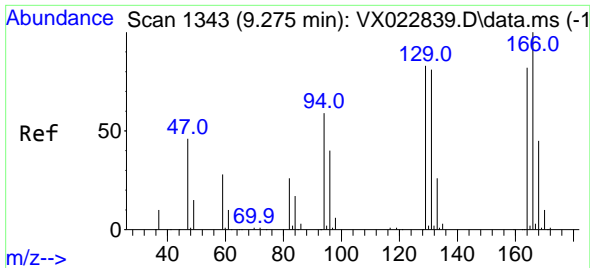


#63
 Chlorobenzene-d5
 Concen: 50.000 ug/l
 RT: 10.061 min Scan# 1472
 Delta R.T. 0.006 min
 Lab File: VX023001.D
 Acq: 29 Jun 2021 14:21



Tgt Ion: 117 Resp: 98436
 Ion Ratio Lower Upper
 117 100
 82 59.5 47.4 71.2
 119 32.8 26.6 39.8

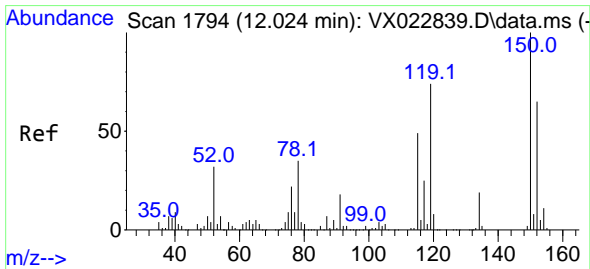
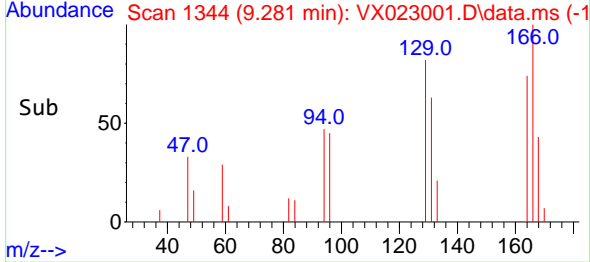
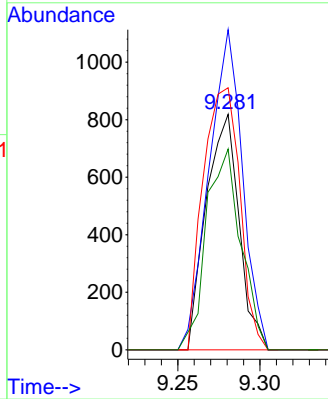
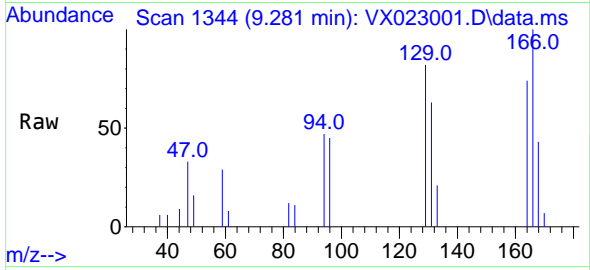




#64
 Tetrachloroethene
 Concen: 1.649 ug/l
 RT: 9.281 min Scan# 1344
 Delta R.T. 0.006 min
 Lab File: VX023001.D
 Acq: 29 Jun 2021 14:21

Instrument :
 MSVOA_X
 ClientSampled :
 MW-17

Tgt Ion:164 Resp: 1141
 Ion Ratio Lower Upper
 164 100
 166 135.9 103.4 155.2
 129 111.2 70.8 106.2#
 131 85.2 72.5 108.7



#72
 1,4-Dichlorobenzene-d4
 Concen: 50.000 ug/l
 RT: 12.024 min Scan# 1794
 Delta R.T. -0.000 min
 Lab File: VX023001.D
 Acq: 29 Jun 2021 14:21

Tgt Ion:152 Resp: 36305
 Ion Ratio Lower Upper
 152 100
 115 67.6 41.1 123.3
 150 153.0 0.0 349.0

