

Data Path : Z:\voasrv\HPCHEM1\MSVOA_X\Data\VX062922\
 Data File : VX029881.D
 Acq On : 30 Jun 2022 00:10
 Operator : JC/MD
 Sample : N3481-02
 Misc : 5.0mL/MSVOA_X/WATER
 ALS Vial : 39 Sample Multiplier: 1

Instrument :
 MSVOA_X
 ClientSampleId :
 MW-9

Quant Time: Jun 30 06:25:25 2022
 Quant Method : Z:\voasrv\HPCHEM1\MSVOA_X\Method\82X062822W.M
 Quant Title : SW846 8260
 QLast Update : Wed Jun 29 05:54:51 2022
 Response via : Initial Calibration

Compound	R.T.	QIon	Response	Conc	Units	Dev(Min)

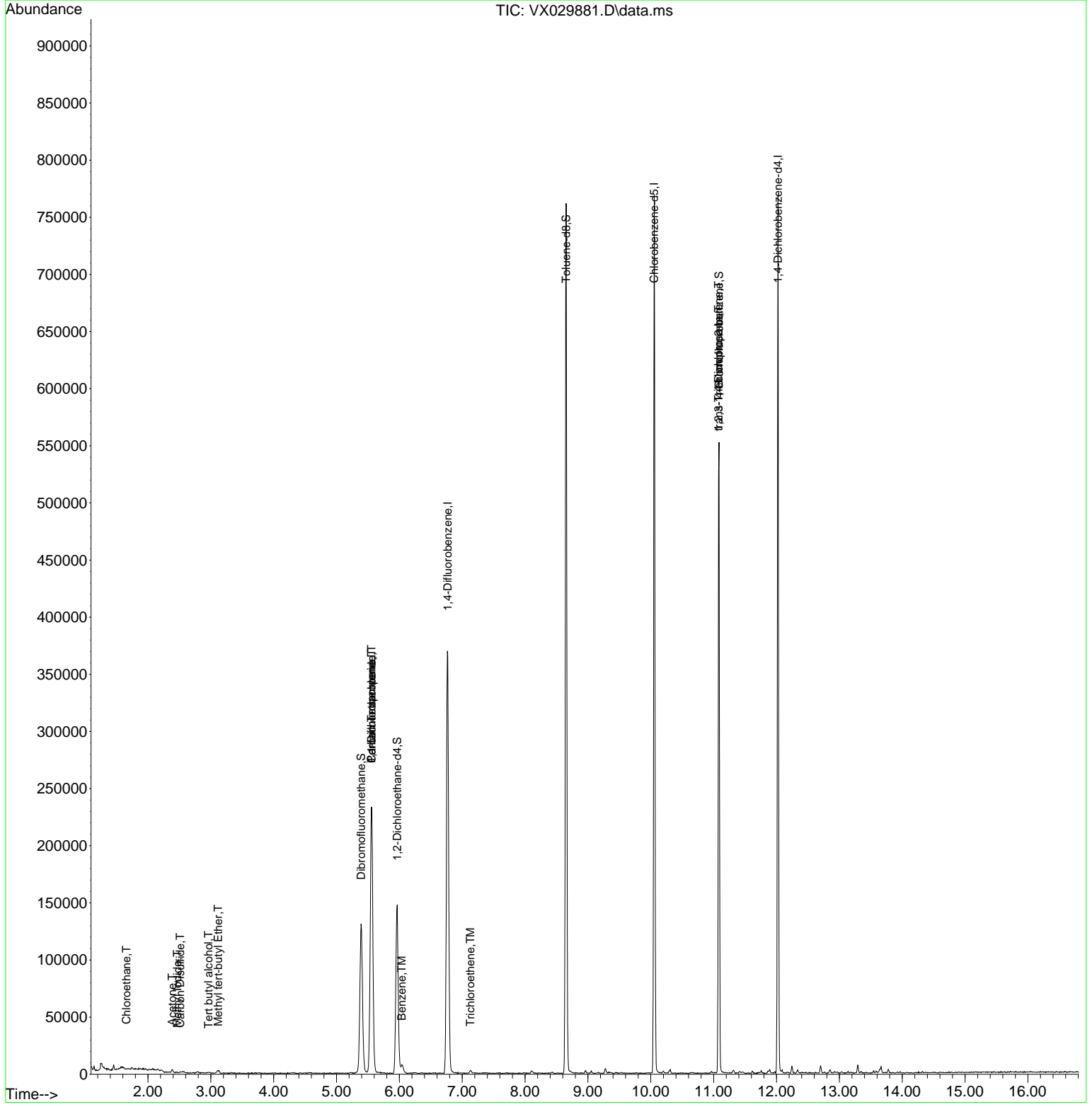
Internal Standards						
1) Pentafluorobenzene	5.556	168	232935	50.000	ug/l	0.00
34) 1,4-Difluorobenzene	6.769	114	403010	50.000	ug/l	0.00
63) Chlorobenzene-d5	10.055	117	349754	50.000	ug/l	0.00
72) 1,4-Dichlorobenzene-d4	12.024	152	153696	50.000	ug/l	0.00
System Monitoring Compounds						
33) 1,2-Dichloroethane-d4	5.964	65	128338	43.526	ug/l	0.00
Spiked Amount	50.000	Range	74 - 125	Recovery	=	87.060%
35) Dibromofluoromethane	5.391	113	116996	46.453	ug/l	0.00
Spiked Amount	50.000	Range	75 - 124	Recovery	=	92.900%
50) Toluene-d8	8.653	98	458362	48.512	ug/l	0.00
Spiked Amount	50.000	Range	86 - 113	Recovery	=	97.020%
62) 4-Bromofluorobenzene	11.085	95	154584	46.284	ug/l	0.00
Spiked Amount	50.000	Range	83 - 123	Recovery	=	92.560%
Target Compounds						
					Qvalue	
6) Chloroethane	1.654	64	169	1.123	ug/l #	60
10) Methyl Iodide	2.465	142	546	2.037	ug/l #	92
11) Tert butyl alcohol	2.965	59	603	0.782	ug/l #	83
13) Acrolein	2.239	56	72	Below Cal	#	1
16) Acetone	2.386	43	2689	1.864	ug/l #	81
17) Carbon Disulfide	2.514	76	1208	0.203	ug/l #	94
19) Methyl tert-butyl Ether	3.117	73	2355	0.291	ug/l #	90
36) 1,1-Dichloropropene	5.556	75	17539	5.236	ug/l #	48
38) Carbon Tetrachloride	5.556	117	21617	7.447	ug/l #	18
40) Benzene	6.038	78	8195	0.757	ug/l	99
44) Trichloroethene	7.129	130	932	0.320	ug/l	67
76) 1,2,3-Trichloropropane	11.079	75	73399	19.949	ug/l #	38
81) trans-1,4-Dichloro-2-b...	11.079	75	73399	63.354	ug/l #	13

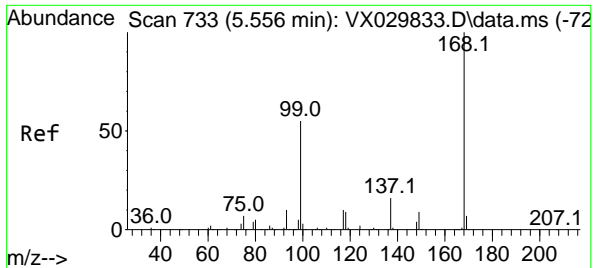
(#) = qualifier out of range (m) = manual integration (+) = signals summed

Data Path : Z:\voasrv\HPCHEM1\MSVOA_X\Data\VX062922\
 Data File : VX029881.D
 Acq On : 30 Jun 2022 00:10
 Operator : JC/MD
 Sample : N3481-02
 Misc : 5.0mL/MSVOA_X/WATER
 ALS Vial : 39 Sample Multiplier: 1

Instrument :
 MSVOA_X
 ClientSampleId :
 MW-9

Quant Time: Jun 30 06:25:25 2022
 Quant Method : Z:\voasrv\HPCHEM1\MSVOA_X\Method\82X062822W.M
 Quant Title : SW846 8260
 QLast Update : Wed Jun 29 05:54:51 2022
 Response via : Initial Calibration

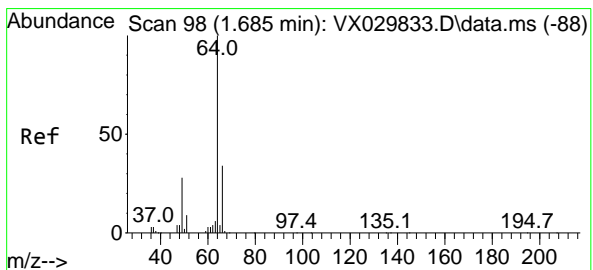
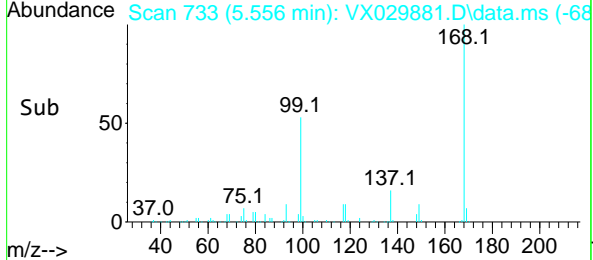
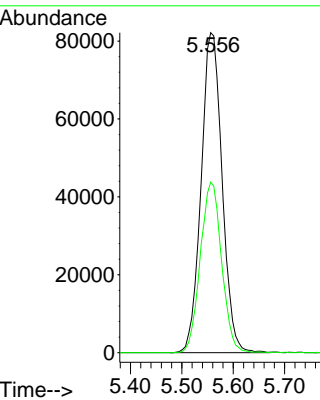
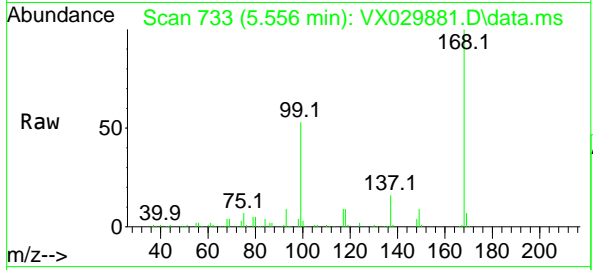




#1
 Pentafluorobenzene
 Concen: 50.000 ug/l
 RT: 5.556 min Scan# 71
 Delta R.T. -0.000 min
 Lab File: VX029881.D
 Acq: 30 Jun 2022 00:10

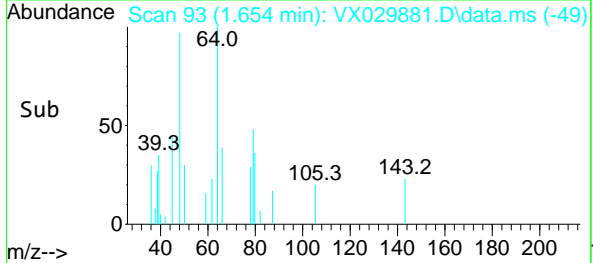
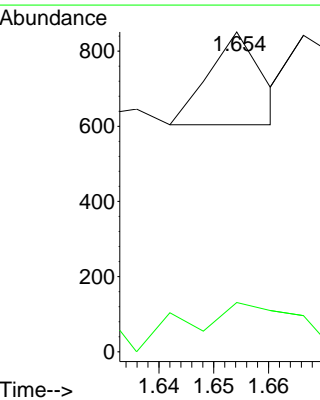
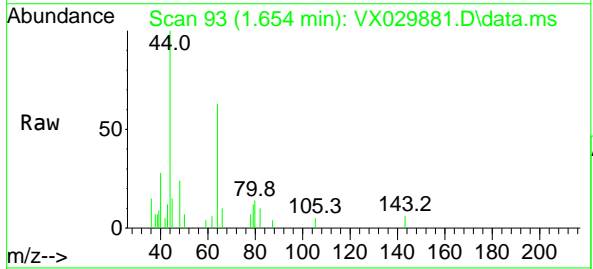
Instrument : MSVOA_X
 ClientSampleId : MW-9

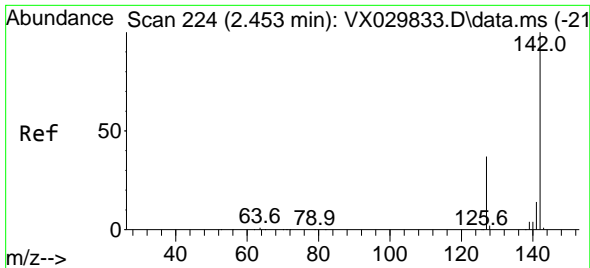
Tgt Ion:168 Resp: 232935
 Ion Ratio Lower Upper
 168 100
 99 53.3 44.0 66.0



#6
 Chloroethane
 Concen: 1.123 ug/l
 RT: 1.654 min Scan# 93
 Delta R.T. -0.031 min
 Lab File: VX029881.D
 Acq: 30 Jun 2022 00:10

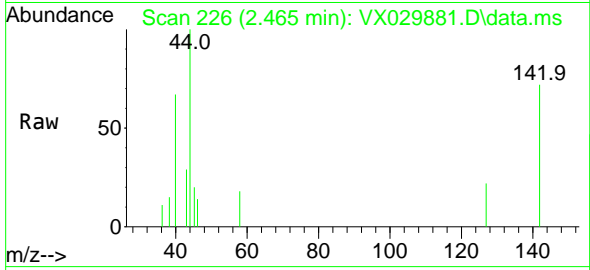
Tgt Ion: 64 Resp: 169
 Ion Ratio Lower Upper
 64 100
 66 10.9 27.2 40.8#





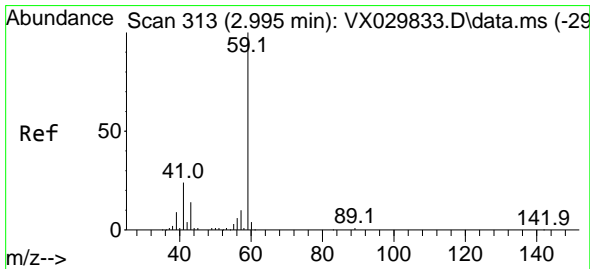
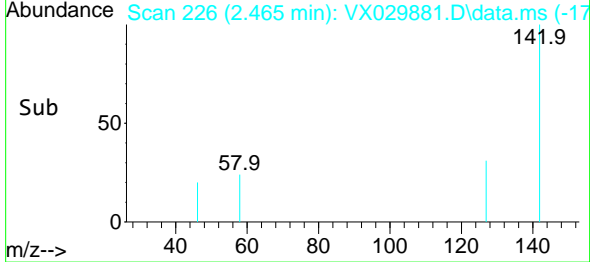
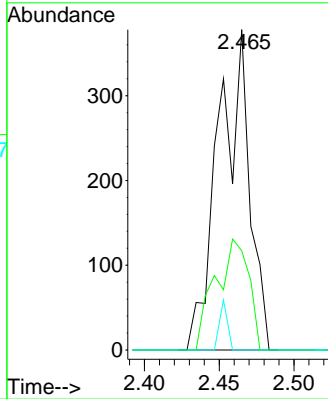
#10
Methyl Iodide
Concen: 2.037 ug/l
RT: 2.465 min Scan# 21
Delta R.T. 0.012 min
Lab File: VX029881.D
Acq: 30 Jun 2022 00:10

Instrument : MSVOA_X
ClientSampleId : MW-9



Tgt Ion:142 Resp: 546

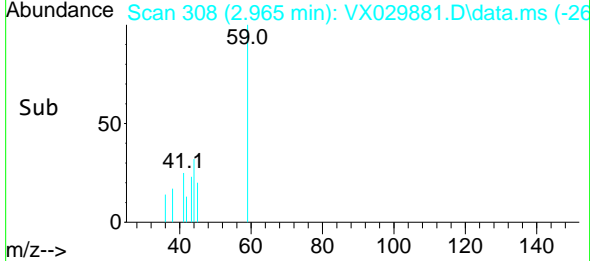
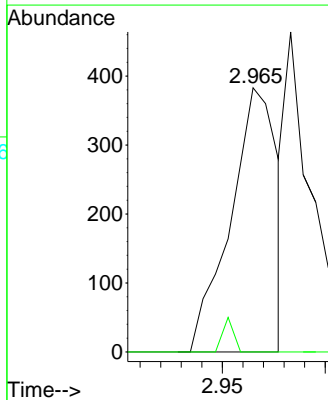
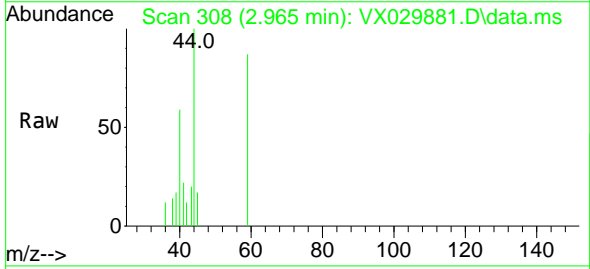
Ion	Ratio	Lower	Upper
142	100		
127	37.0	30.2	45.2
141	4.0	11.3	16.9#

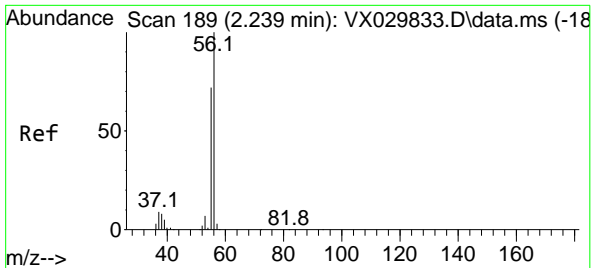


#11
Tert butyl alcohol
Concen: 0.782 ug/l
RT: 2.965 min Scan# 308
Delta R.T. -0.030 min
Lab File: VX029881.D
Acq: 30 Jun 2022 00:10

Tgt Ion: 59 Resp: 603

Ion	Ratio	Lower	Upper
59	100		
57	3.0	7.4	11.2#

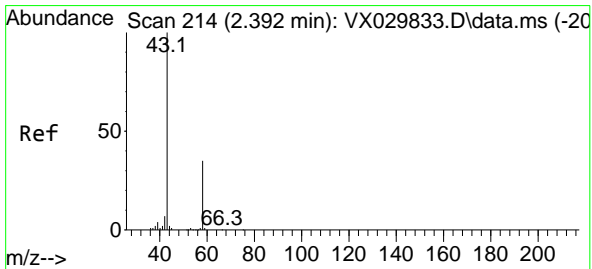
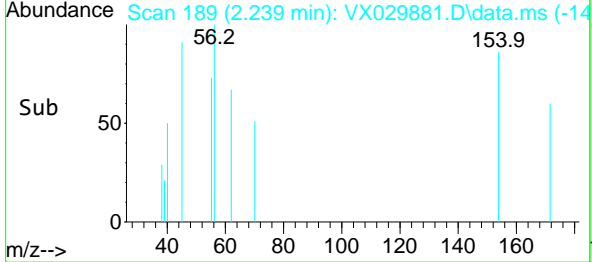
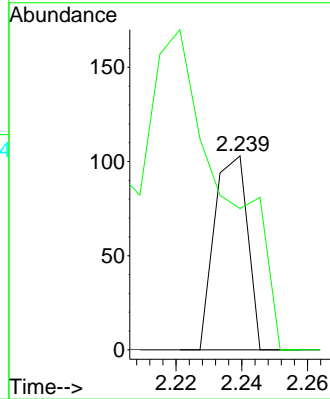
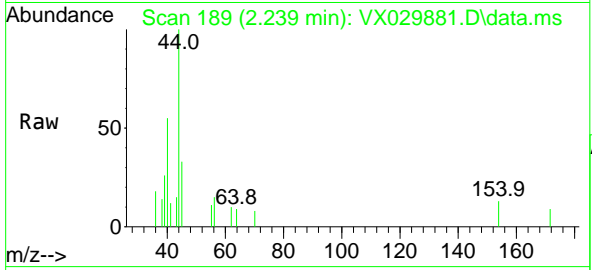




#13
 Acrolein
 Concen: Below Cal
 RT: 2.239 min Scan# 11
 Delta R.T. 0.000 min
 Lab File: VX029881.D
 Acq: 30 Jun 2022 00:10

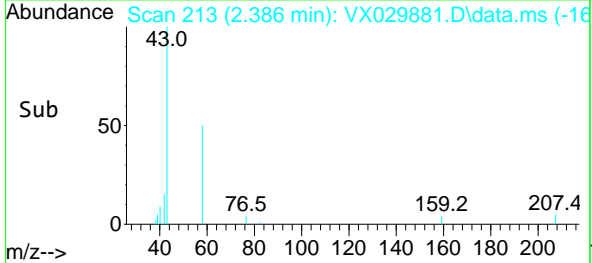
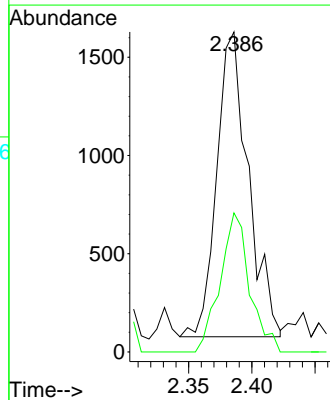
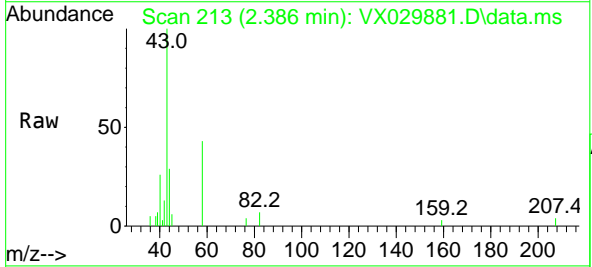
Instrument : MSVOA_X
 ClientSampleId : MW-9

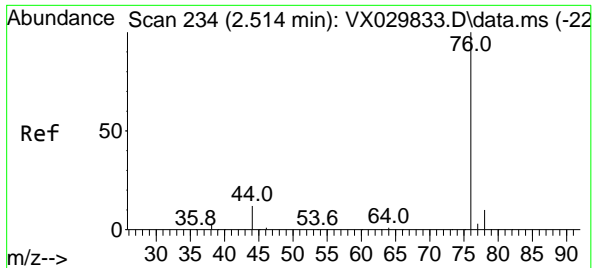
Tgt Ion: 56 Resp: 72
 Ion Ratio Lower Upper
 56 100
 55 480.6 56.6 84.8#



#16
 Acetone
 Concen: 1.864 ug/l
 RT: 2.386 min Scan# 213
 Delta R.T. -0.006 min
 Lab File: VX029881.D
 Acq: 30 Jun 2022 00:10

Tgt Ion: 43 Resp: 2689
 Ion Ratio Lower Upper
 43 100
 58 45.6 27.7 41.5#

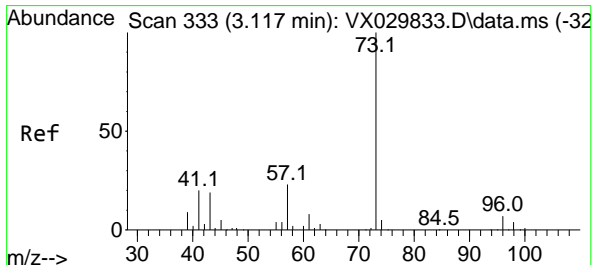
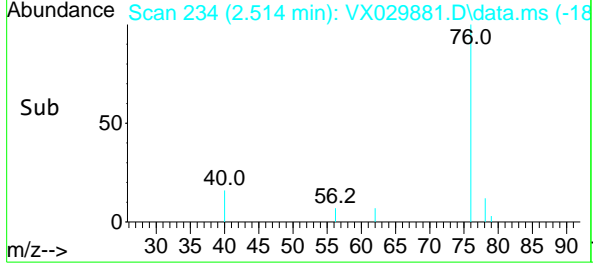
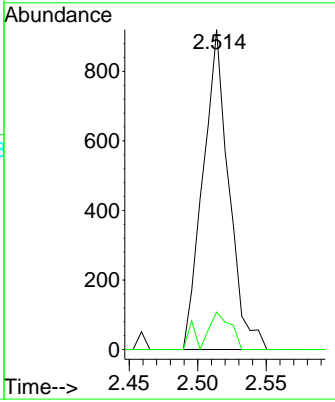
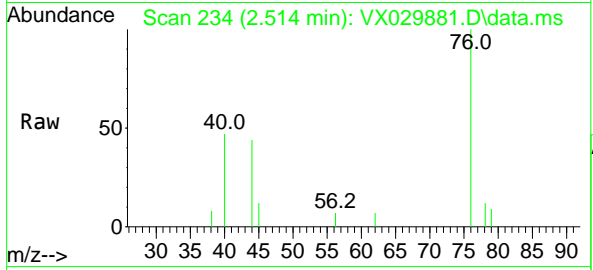




#17
 Carbon Disulfide
 Concen: 0.203 ug/l
 RT: 2.514 min Scan# 21
 Delta R.T. 0.000 min
 Lab File: VX029881.D
 Acq: 30 Jun 2022 00:10

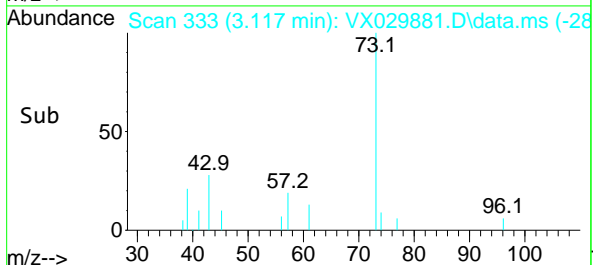
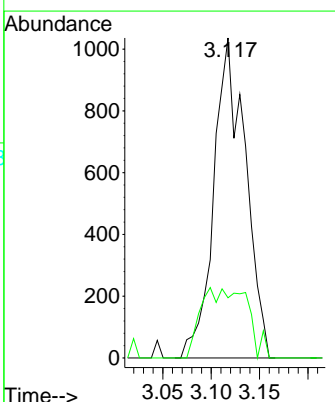
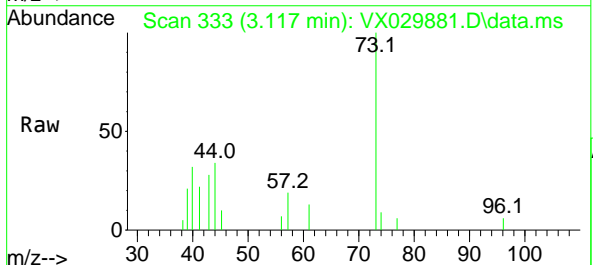
Instrument : MSVOA_X
 ClientSampleId : MW-9

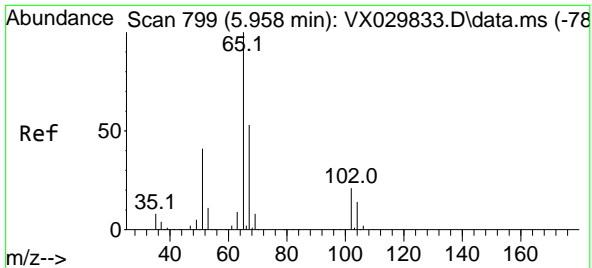
Tgt Ion: 76 Resp: 1208
 Ion Ratio Lower Upper
 76 100
 78 11.7 7.8 11.6#



#19
 Methyl tert-butyl Ether
 Concen: 0.291 ug/l
 RT: 3.117 min Scan# 333
 Delta R.T. 0.000 min
 Lab File: VX029881.D
 Acq: 30 Jun 2022 00:10

Tgt Ion: 73 Resp: 2355
 Ion Ratio Lower Upper
 73 100
 57 18.8 19.0 28.6#

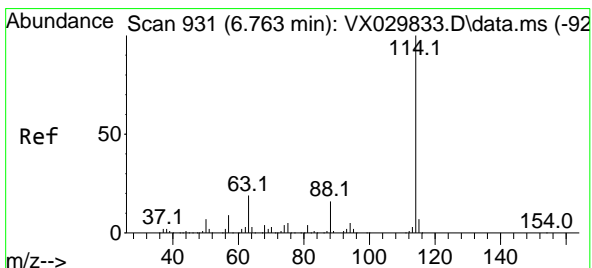
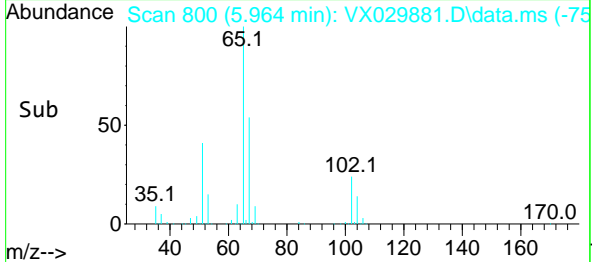
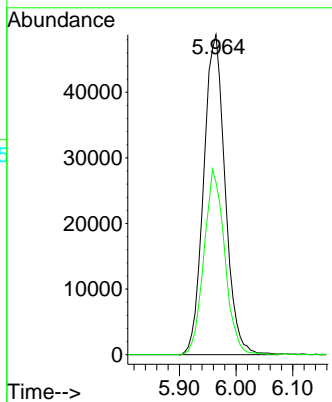
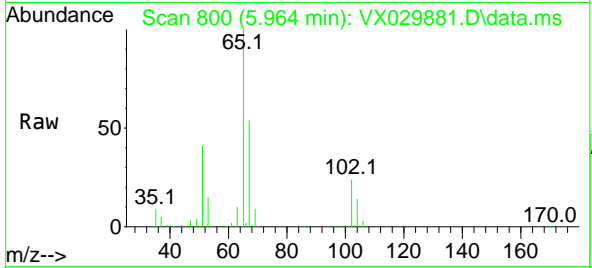




#33
 1,2-Dichloroethane-d4
 Concen: 43.526 ug/l
 RT: 5.964 min Scan# 800
 Delta R.T. 0.006 min
 Lab File: VX029881.D
 Acq: 30 Jun 2022 00:10

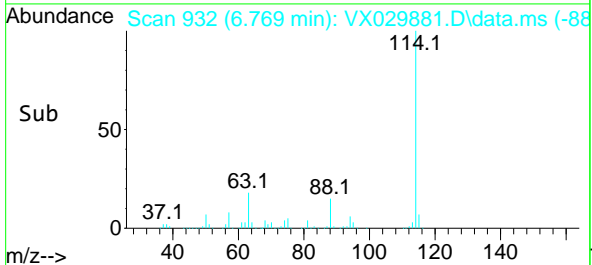
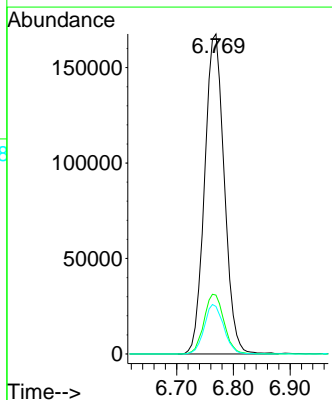
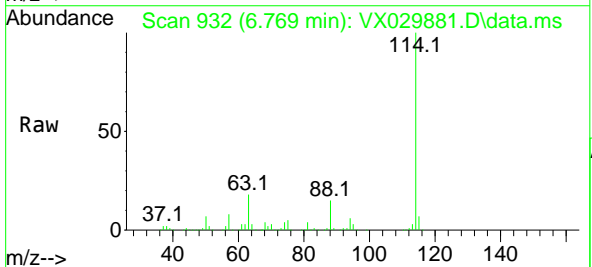
Instrument :
 MSVOA_X
 ClientSampleId :
 MW-9

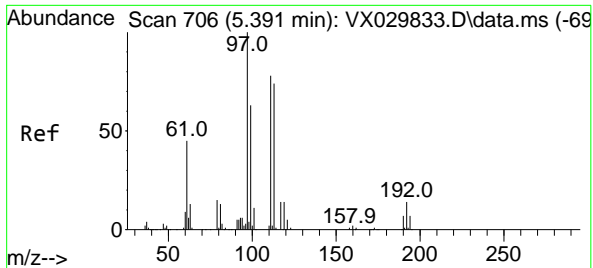
Tgt Ion: 65 Resp: 128338
 Ion Ratio Lower Upper
 65 100
 67 56.1 0.0 109.6



#34
 1,4-Difluorobenzene
 Concen: 50.000 ug/l
 RT: 6.769 min Scan# 932
 Delta R.T. 0.006 min
 Lab File: VX029881.D
 Acq: 30 Jun 2022 00:10

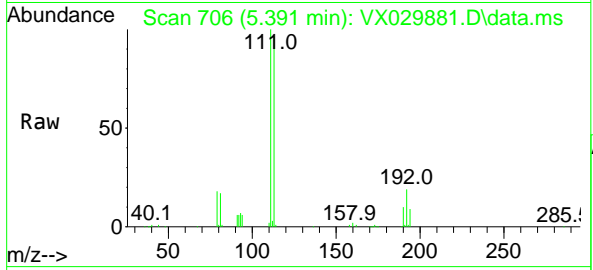
Tgt Ion:114 Resp: 403010
 Ion Ratio Lower Upper
 114 100
 63 18.4 0.0 38.4
 88 14.8 0.0 31.8



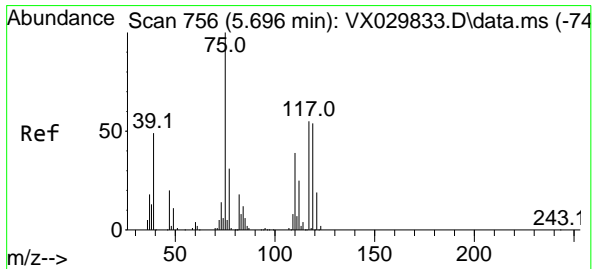
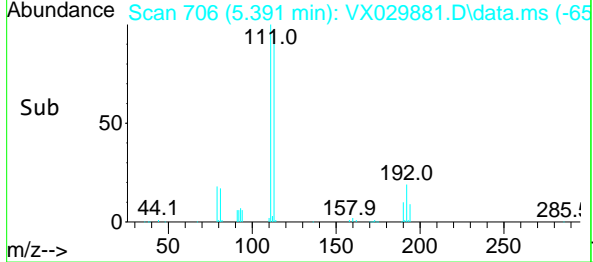
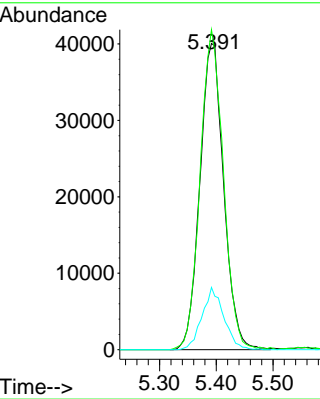


#35
 Dibromofluoromethane
 Concen: 46.453 ug/l
 RT: 5.391 min Scan# 706
 Delta R.T. 0.000 min
 Lab File: VX029881.D
 Acq: 30 Jun 2022 00:10

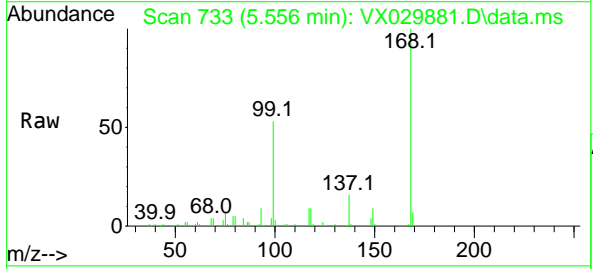
Instrument : MSVOA_X
 ClientSampleId : MW-9



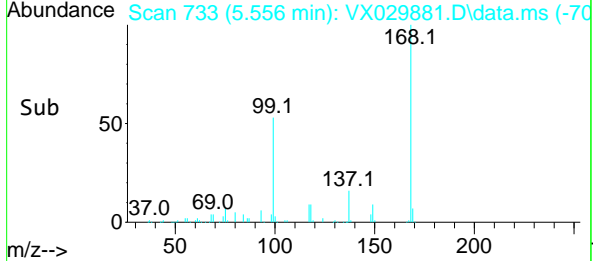
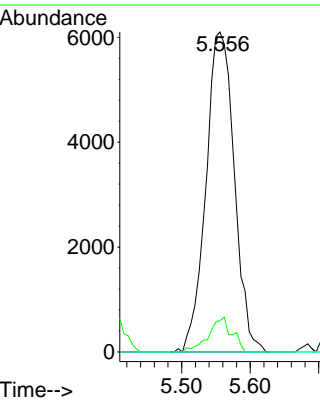
Tgt Ion:113 Resp: 116996
 Ion Ratio Lower Upper
 113 100
 111 101.6 83.2 124.8
 192 18.6 14.8 22.2

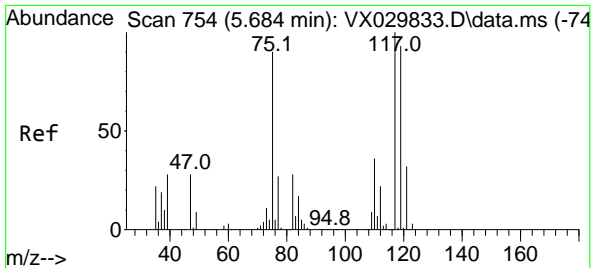


#36
 1,1-Dichloropropene
 Concen: 5.236 ug/l
 RT: 5.556 min Scan# 733
 Delta R.T. -0.140 min
 Lab File: VX029881.D
 Acq: 30 Jun 2022 00:10



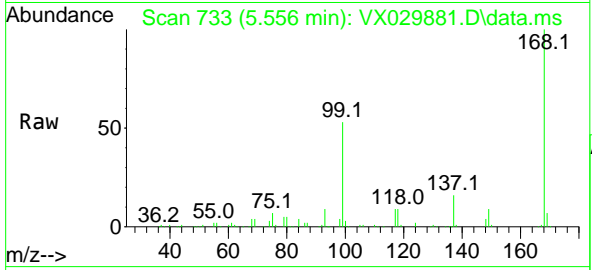
Tgt Ion: 75 Resp: 17539
 Ion Ratio Lower Upper
 75 100
 110 8.9 19.3 57.9#
 77 0.0 24.4 36.6#



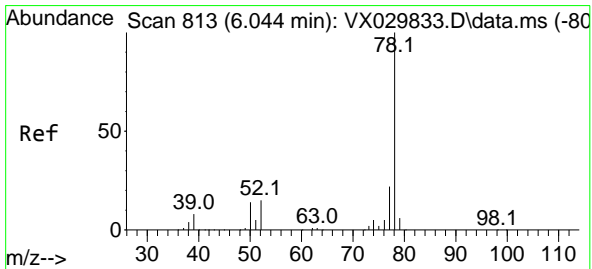
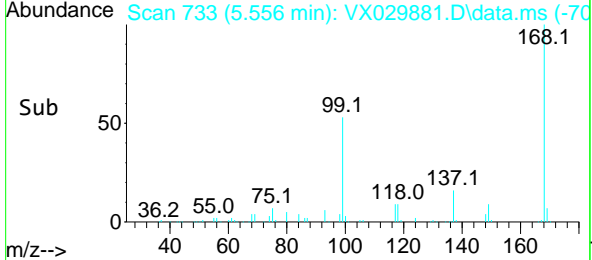
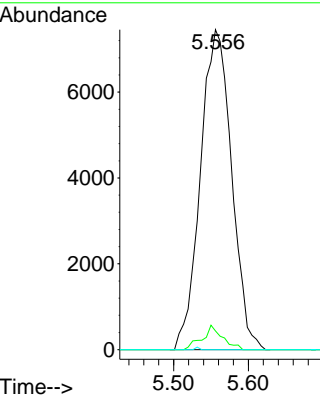


#38
 Carbon Tetrachloride
 Concen: 7.447 ug/l
 RT: 5.556 min Scan# 71
 Delta R.T. -0.128 min
 Lab File: VX029881.D
 Acq: 30 Jun 2022 00:10

Instrument : MSVOA_X
 ClientSampleId : MW-9

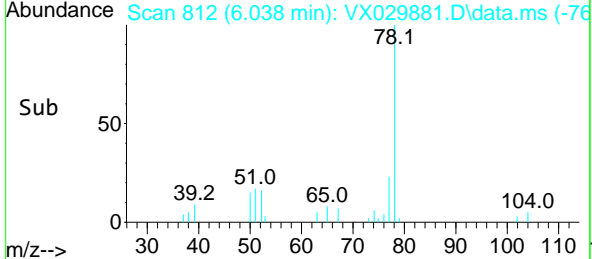
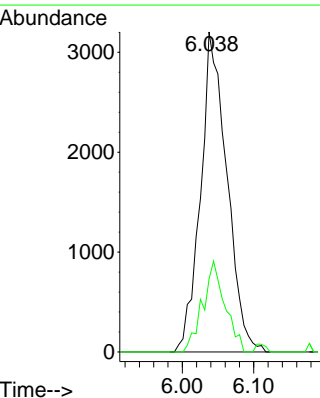
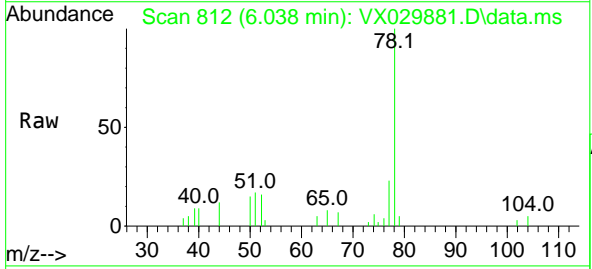


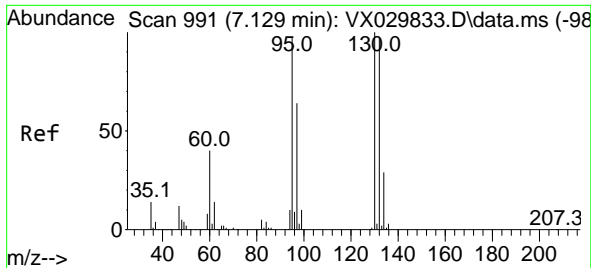
Tgt Ion:117 Resp: 21617
 Ion Ratio Lower Upper
 117 100
 119 5.9 74.1 111.1#
 121 0.0 25.8 38.8#



#40
 Benzene
 Concen: 0.757 ug/l
 RT: 6.038 min Scan# 812
 Delta R.T. -0.006 min
 Lab File: VX029881.D
 Acq: 30 Jun 2022 00:10

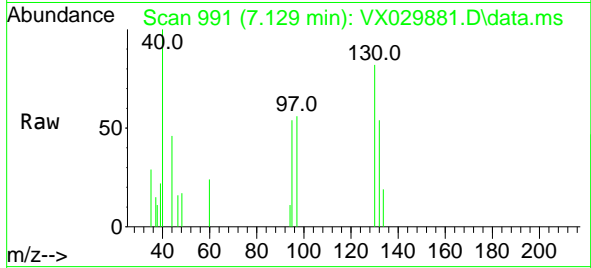
Tgt Ion: 78 Resp: 8195
 Ion Ratio Lower Upper
 78 100
 77 22.8 18.0 27.0



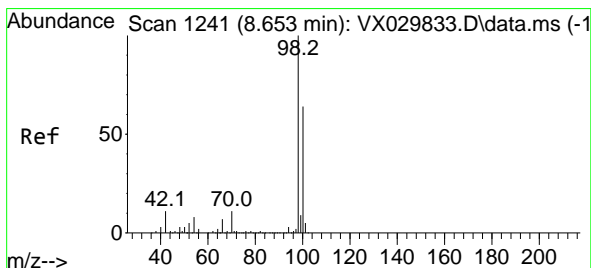
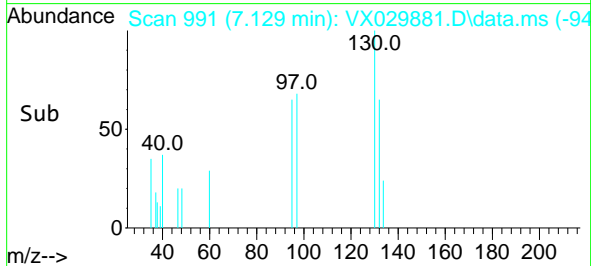
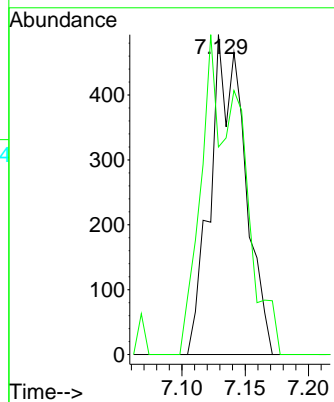


#44
 Trichloroethene
 Concen: 0.320 ug/l
 RT: 7.129 min Scan# 991
 Delta R.T. 0.000 min
 Lab File: VX029881.D
 Acq: 30 Jun 2022 00:10

Instrument : MSVOA_X
 ClientSampleId : MW-9

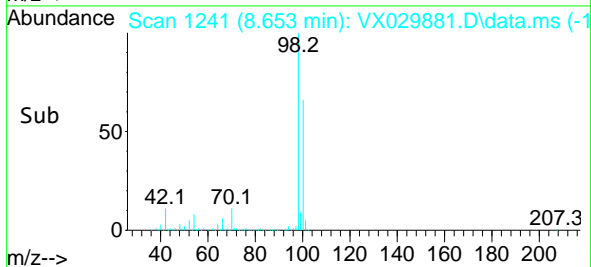
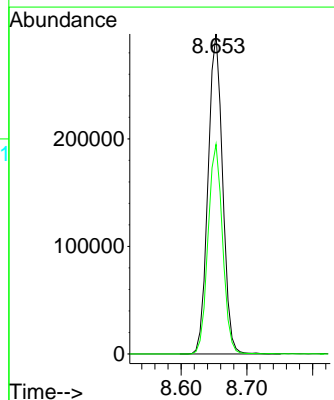
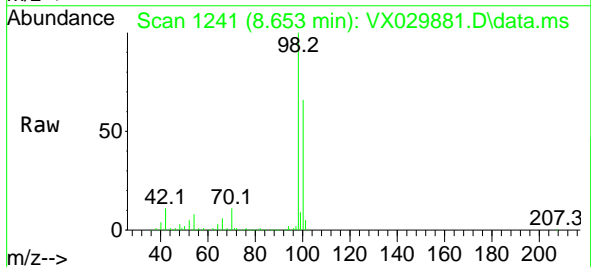


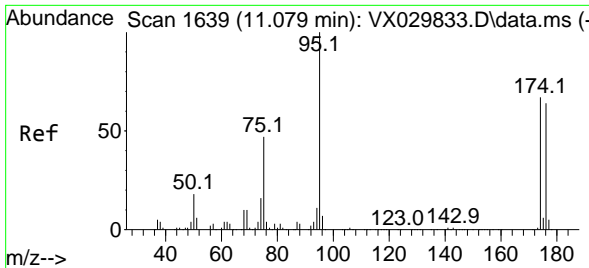
Tgt Ion:130 Resp: 932
 Ion Ratio Lower Upper
 130 100
 95 64.9 0.0 194.8



#50
 Toluene-d8
 Concen: 48.512 ug/l
 RT: 8.653 min Scan# 1241
 Delta R.T. 0.000 min
 Lab File: VX029881.D
 Acq: 30 Jun 2022 00:10

Tgt Ion: 98 Resp: 458362
 Ion Ratio Lower Upper
 98 100
 100 65.3 52.3 78.5



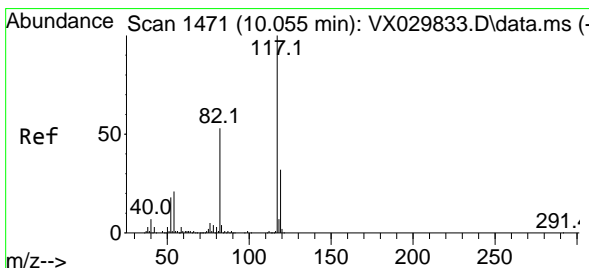
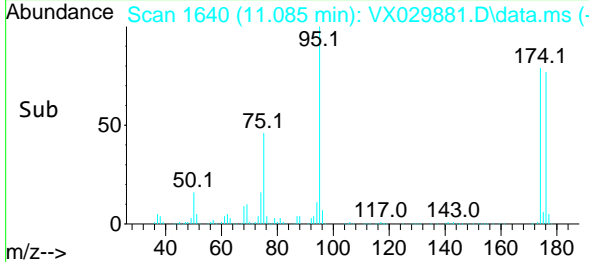
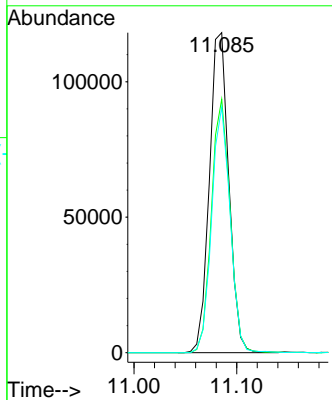
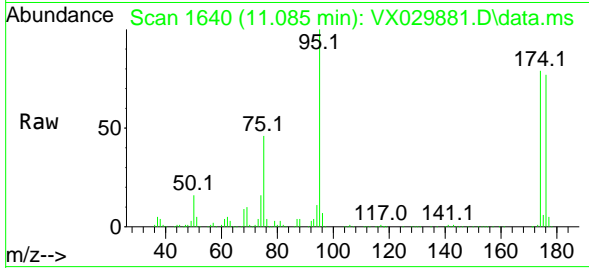


#62
 4-Bromofluorobenzene
 Concen: 46.284 ug/l
 RT: 11.085 min Scan# 11085
 Delta R.T. 0.006 min
 Lab File: VX029881.D
 Acq: 30 Jun 2022 00:10

Instrument : MSVOA_X
 ClientSampleId : MW-9

Tgt Ion: 95 Resp: 154584

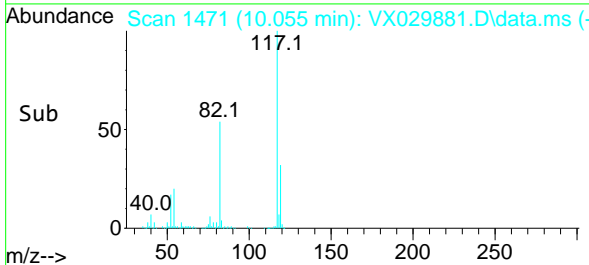
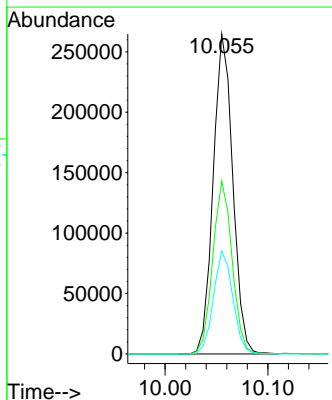
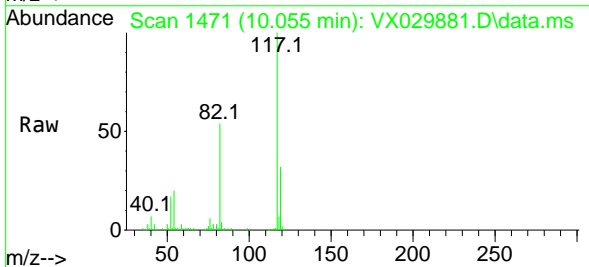
Ion	Ratio	Lower	Upper
95	100		
174	76.3	0.0	149.0
176	73.3	0.0	146.0

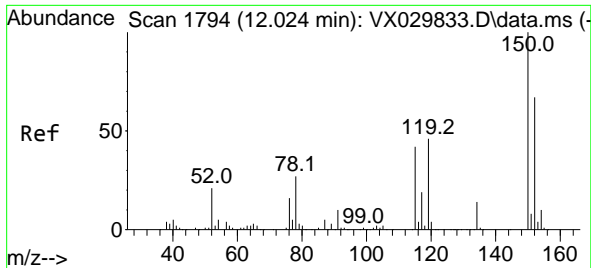


#63
 Chlorobenzene-d5
 Concen: 50.000 ug/l
 RT: 10.055 min Scan# 1471
 Delta R.T. 0.000 min
 Lab File: VX029881.D
 Acq: 30 Jun 2022 00:10

Tgt Ion: 117 Resp: 349754

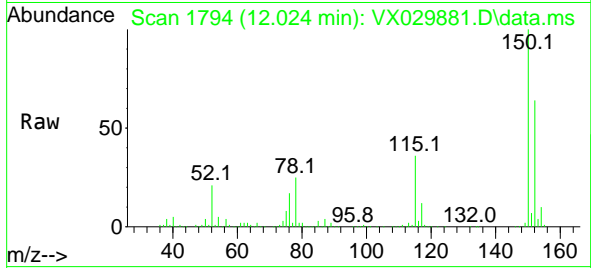
Ion	Ratio	Lower	Upper
117	100		
82	54.0	42.7	64.1
119	32.2	25.4	38.2



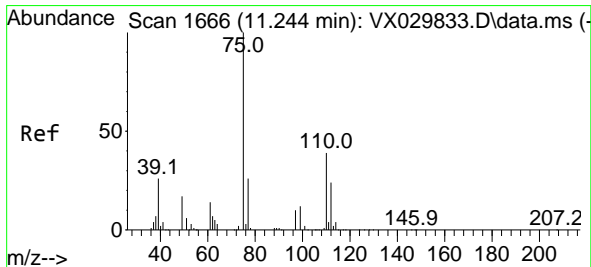
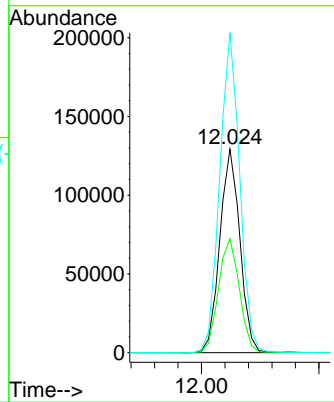
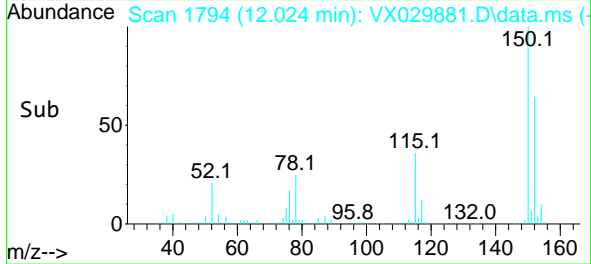


#72
 1,4-Dichlorobenzene-d4
 Concen: 50.000 ug/l
 RT: 12.024 min Scan# 11
 Delta R.T. 0.000 min
 Lab File: VX029881.D
 Acq: 30 Jun 2022 00:10

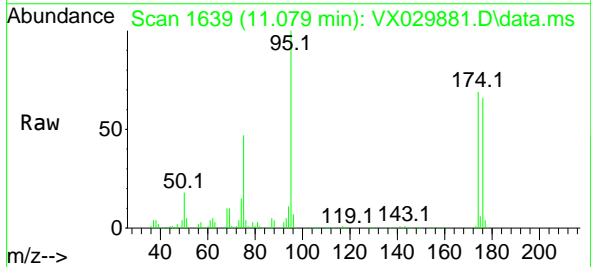
Instrument :
 MSVOA_X
 ClientSampleId :
 MW-9



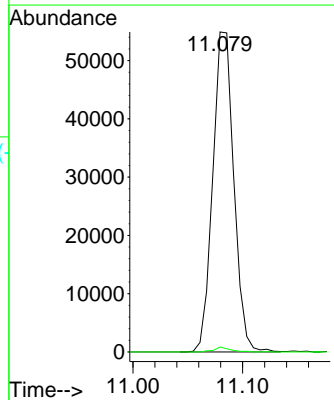
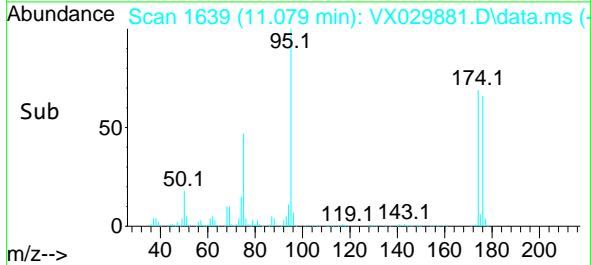
Tgt Ion:152 Resp: 153696
 Ion Ratio Lower Upper
 152 100
 115 58.2 40.5 121.5
 150 156.4 0.0 347.0

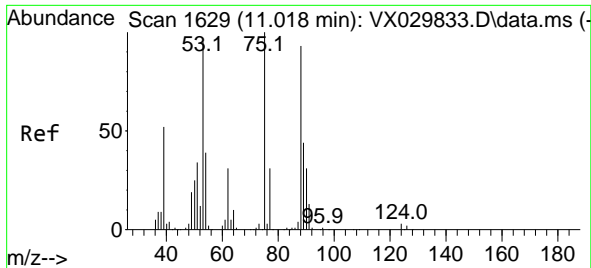


#76
 1,2,3-Trichloropropane
 Concen: 19.949 ug/l
 RT: 11.079 min Scan# 1639
 Delta R.T. -0.164 min
 Lab File: VX029881.D
 Acq: 30 Jun 2022 00:10



Tgt Ion: 75 Resp: 73399
 Ion Ratio Lower Upper
 75 100
 77 1.2 19.8 59.3#





#81
 trans-1,4-Dichloro-2-butene
 Concen: 63.354 ug/l
 RT: 11.079 min Scan# 10
 Delta R.T. 0.061 min
 Lab File: VX029881.D
 Acq: 30 Jun 2022 00:10

Instrument :
 MSVOA_X
 ClientSampleId :
 MW-9

Tgt Ion: 75 Resp: 73399
 Ion Ratio Lower Upper
 75 100
 53 0.0 74.2 111.4#
 89 0.1 34.8 52.2#

