

Data Path : Z:\voasrv\HPCHEM1\MSVOA_X\Data\VX062922\
 Data File : VX029862.D
 Acq On : 29 Jun 2022 15:20
 Operator : JC/MD
 Sample : N3505-02
 Misc : 5.0mL/MSVOA_X/WATER
 ALS Vial : 16 Sample Multiplier: 1

Instrument :
 MSVOA_X
 ClientSampleId :
 TB-20220624

Quant Time: Jun 29 22:59:50 2022
 Quant Method : Z:\voasrv\HPCHEM1\MSVOA_X\Method\82X062822W.M
 Quant Title : SW846 8260
 QLast Update : Wed Jun 29 05:54:51 2022
 Response via : Initial Calibration

Compound	R.T.	QIon	Response	Conc	Units	Dev(Min)

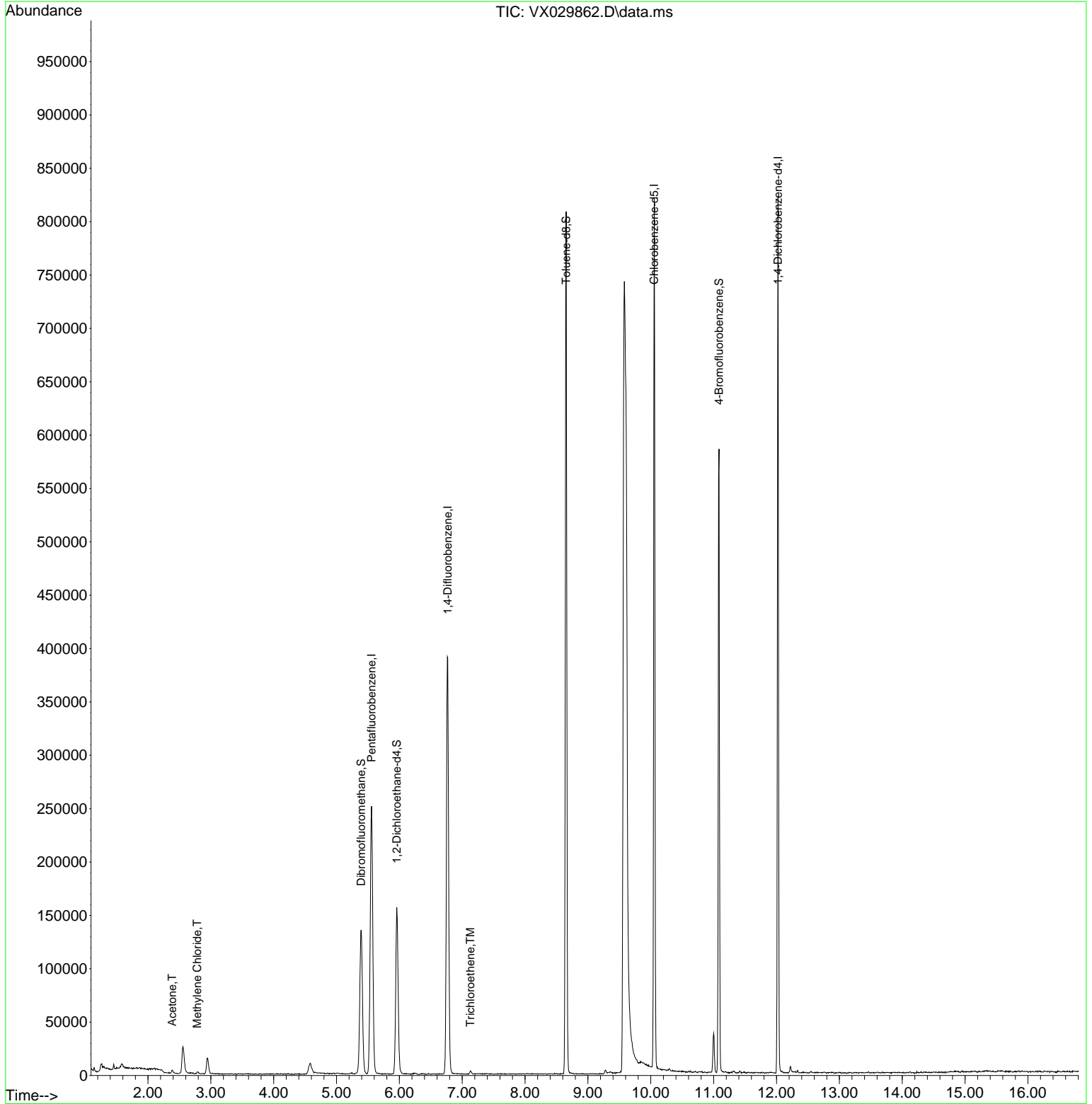
Internal Standards						
1) Pentafluorobenzene	5.556	168	248916	50.000	ug/l	0.00
34) 1,4-Difluorobenzene	6.769	114	432175	50.000	ug/l	0.00
63) Chlorobenzene-d5	10.055	117	372010	50.000	ug/l	0.00
72) 1,4-Dichlorobenzene-d4	12.024	152	163848	50.000	ug/l	0.00
System Monitoring Compounds						
33) 1,2-Dichloroethane-d4	5.958	65	136272	43.249	ug/l	0.00
Spiked Amount	50.000	Range	74 - 125	Recovery	=	86.500%
35) Dibromofluoromethane	5.391	113	122851	45.486	ug/l	0.00
Spiked Amount	50.000	Range	75 - 124	Recovery	=	90.980%
50) Toluene-d8	8.653	98	488928	48.255	ug/l	0.00
Spiked Amount	50.000	Range	86 - 113	Recovery	=	96.500%
62) 4-Bromofluorobenzene	11.085	95	167041	46.639	ug/l	0.00
Spiked Amount	50.000	Range	83 - 123	Recovery	=	93.280%
Target Compounds						
					Qvalue	
16) Acetone	2.386	43	3241	2.103	ug/l #	85
20) Methylene Chloride	2.782	84	755	0.232	ug/l #	73
44) Trichloroethene	7.129	130	1015	0.324	ug/l	99

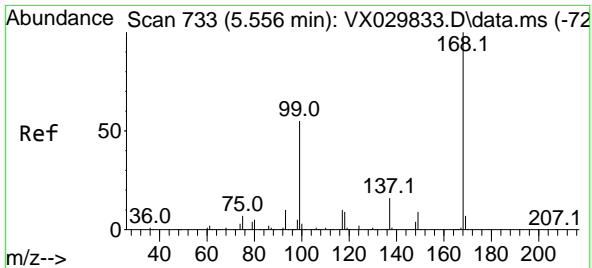
(#) = qualifier out of range (m) = manual integration (+) = signals summed

Data Path : Z:\voasrv\HPCHEM1\MSVOA_X\Data\VX062922\
 Data File : VX029862.D
 Acq On : 29 Jun 2022 15:20
 Operator : JC/MD
 Sample : N3505-02
 Misc : 5.0mL/MSVOA_X/WATER
 ALS Vial : 16 Sample Multiplier: 1

Instrument :
 MSVOA_X
 ClientSampleId :
 TB-20220624

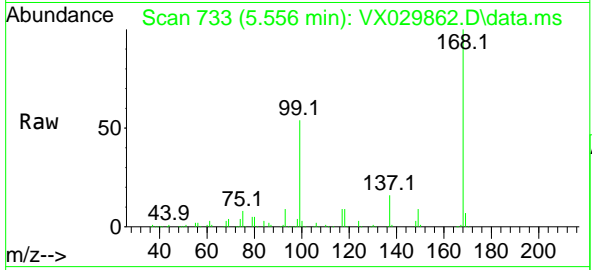
Quant Time: Jun 29 22:59:50 2022
 Quant Method : Z:\voasrv\HPCHEM1\MSVOA_X\Method\82X062822W.M
 Quant Title : SW846 8260
 QLast Update : Wed Jun 29 05:54:51 2022
 Response via : Initial Calibration



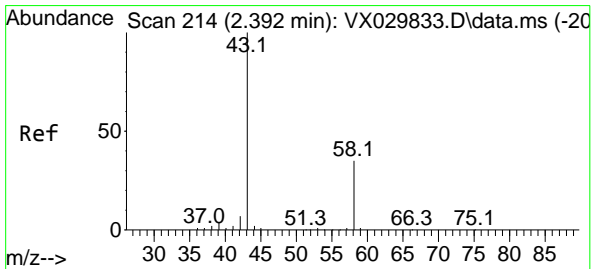
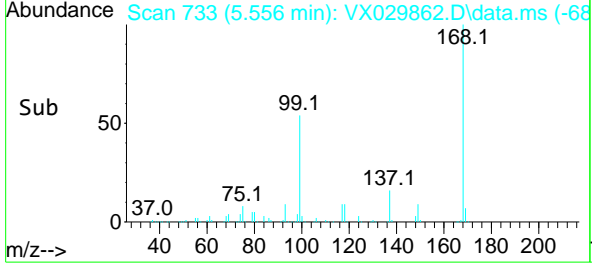
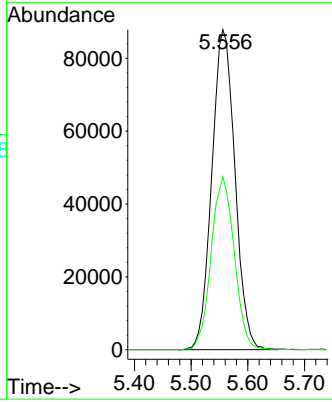


#1
 Pentafluorobenzene
 Concen: 50.000 ug/l
 RT: 5.556 min Scan# 71
 Delta R.T. -0.000 min
 Lab File: VX029862.D
 Acq: 29 Jun 2022 15:20

Instrument : MSVOA_X
 ClientSampleId : TB-20220624

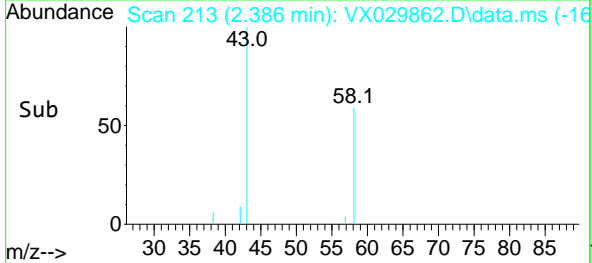
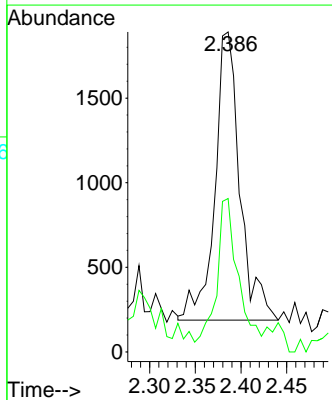
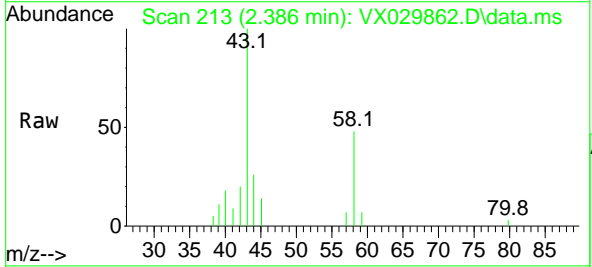


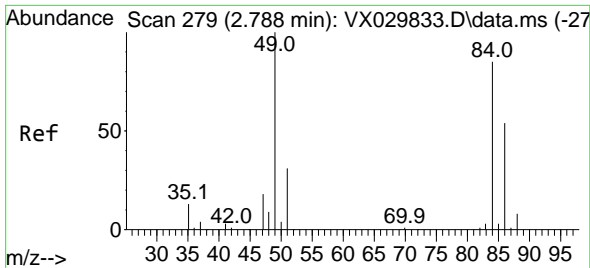
Tgt Ion:168 Resp: 248916
 Ion Ratio Lower Upper
 168 100
 99 54.1 44.0 66.0



#16
 Acetone
 Concen: 2.103 ug/l
 RT: 2.386 min Scan# 213
 Delta R.T. -0.006 min
 Lab File: VX029862.D
 Acq: 29 Jun 2022 15:20

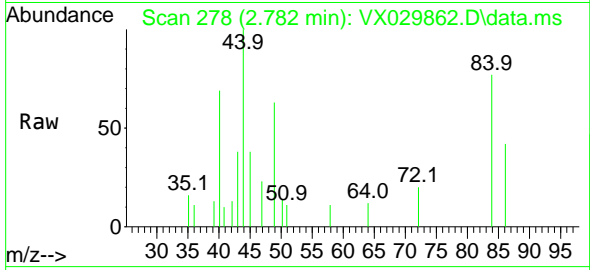
Tgt Ion: 43 Resp: 3241
 Ion Ratio Lower Upper
 43 100
 58 43.3 27.7 41.5#





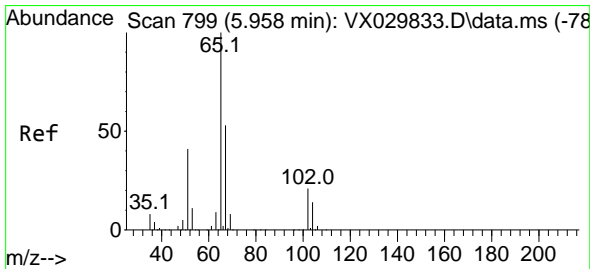
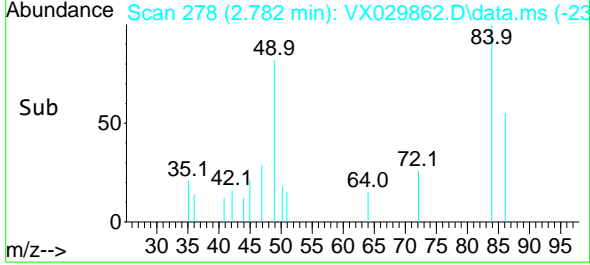
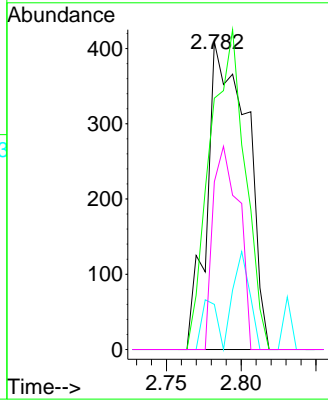
#20
 Methylene Chloride
 Concen: 0.232 ug/l
 RT: 2.782 min Scan# 21
 Delta R.T. -0.006 min
 Lab File: VX029862.D
 Acq: 29 Jun 2022 15:20

Instrument : MSVOA_X
 ClientSampleId : TB-20220624



Tgt Ion: 84 Resp: 755

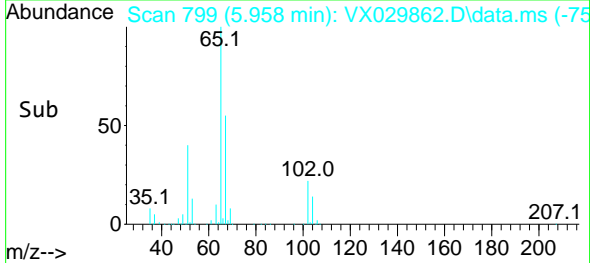
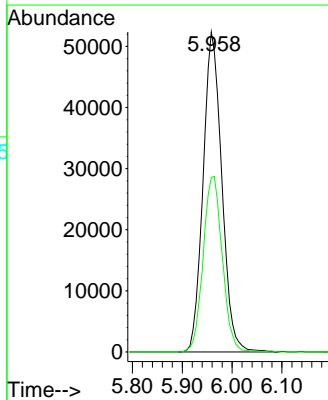
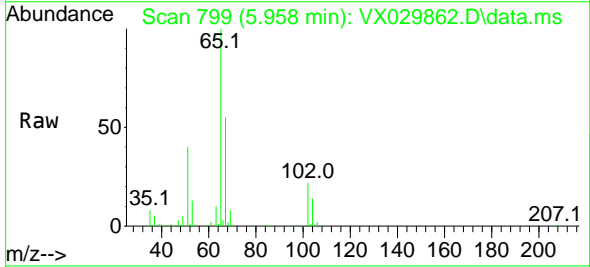
Ion	Ratio	Lower	Upper
84	100		
49	81.7	93.8	140.6#
51	14.7	29.4	44.0#
86	54.5	51.0	76.4

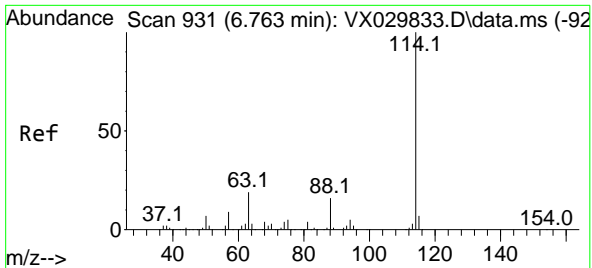


#33
 1,2-Dichloroethane-d4
 Concen: 43.249 ug/l
 RT: 5.958 min Scan# 799
 Delta R.T. 0.000 min
 Lab File: VX029862.D
 Acq: 29 Jun 2022 15:20

Tgt Ion: 65 Resp: 136272

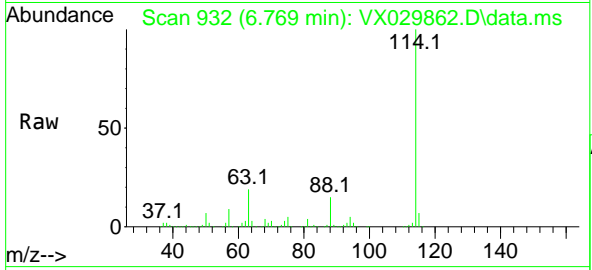
Ion	Ratio	Lower	Upper
65	100		
67	56.2	0.0	109.6



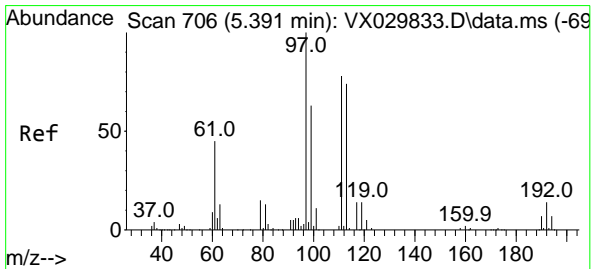
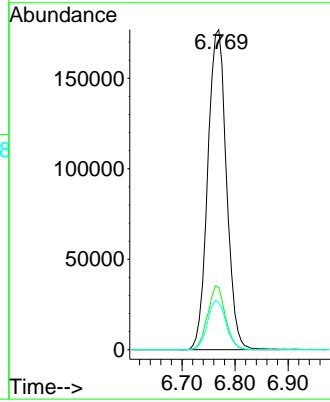
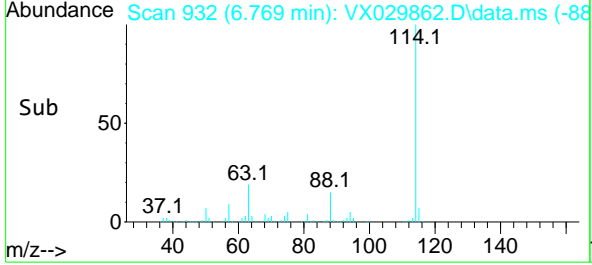


#34
 1,4-Difluorobenzene
 Concen: 50.000 ug/l
 RT: 6.769 min Scan# 911
 Delta R.T. 0.006 min
 Lab File: VX029862.D
 Acq: 29 Jun 2022 15:20

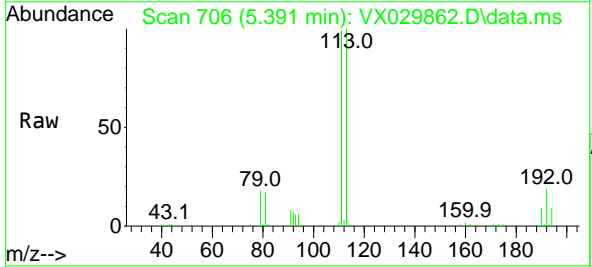
Instrument : MSVOA_X
 Client Sample Id : TB-20220624



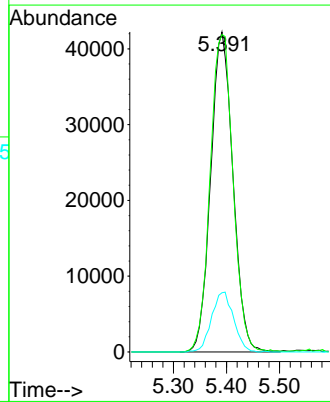
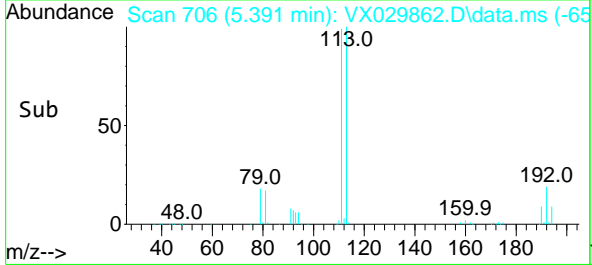
Tgt Ion:114 Resp: 432175
 Ion Ratio Lower Upper
 114 100
 63 19.4 0.0 38.4
 88 14.6 0.0 31.8

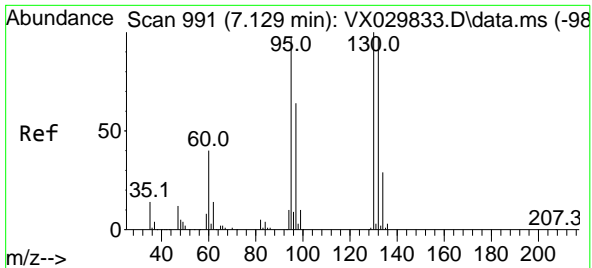


#35
 Dibromofluoromethane
 Concen: 45.486 ug/l
 RT: 5.391 min Scan# 706
 Delta R.T. 0.000 min
 Lab File: VX029862.D
 Acq: 29 Jun 2022 15:20



Tgt Ion:113 Resp: 122851
 Ion Ratio Lower Upper
 113 100
 111 102.2 83.2 124.8
 192 18.6 14.8 22.2

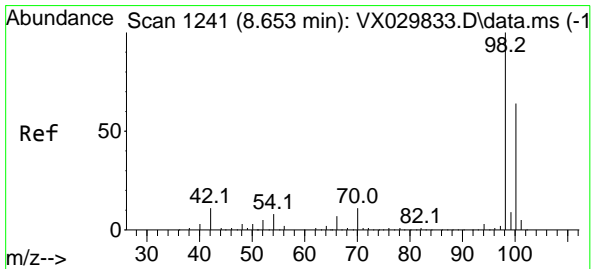
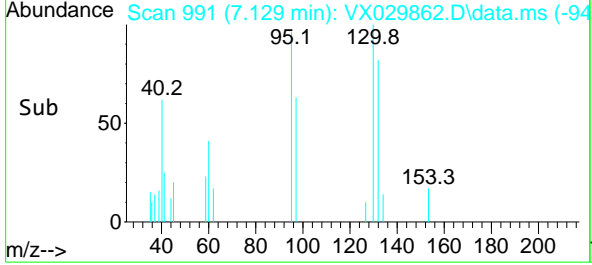
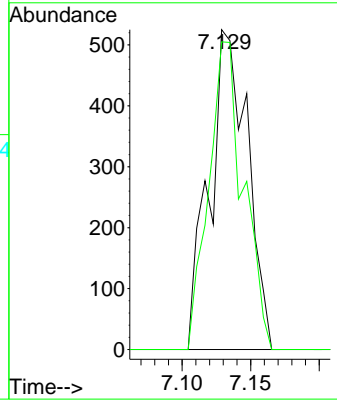
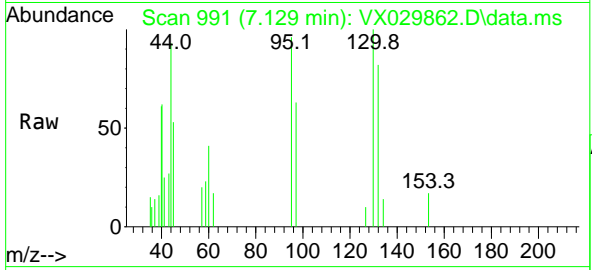




#44
 Trichloroethene
 Concen: 0.324 ug/l
 RT: 7.129 min Scan# 991
 Delta R.T. 0.000 min
 Lab File: VX029862.D
 Acq: 29 Jun 2022 15:20

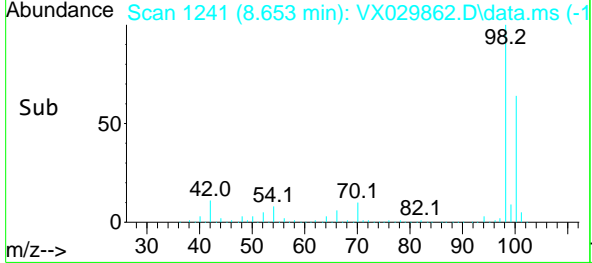
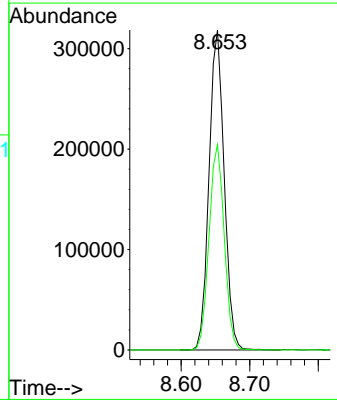
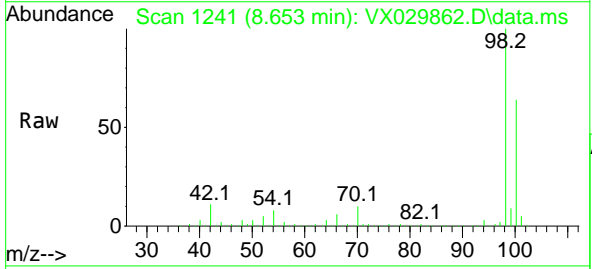
Instrument : MSVOA_X
 Client Sample Id : TB-20220624

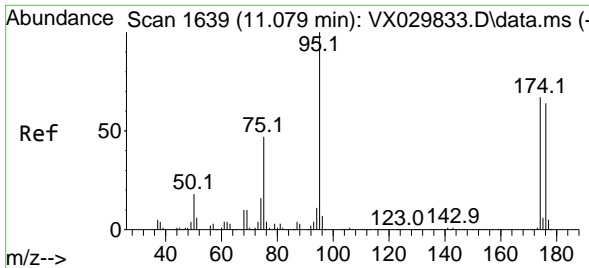
Tgt Ion: 130 Resp: 1015
 Ion Ratio Lower Upper
 130 100
 95 96.2 0.0 194.8



#50
 Toluene-d8
 Concen: 48.255 ug/l
 RT: 8.653 min Scan# 1241
 Delta R.T. 0.000 min
 Lab File: VX029862.D
 Acq: 29 Jun 2022 15:20

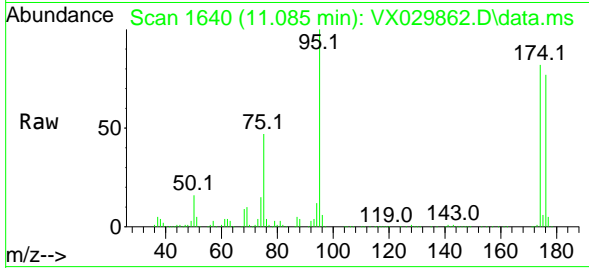
Tgt Ion: 98 Resp: 488928
 Ion Ratio Lower Upper
 98 100
 100 64.6 52.3 78.5



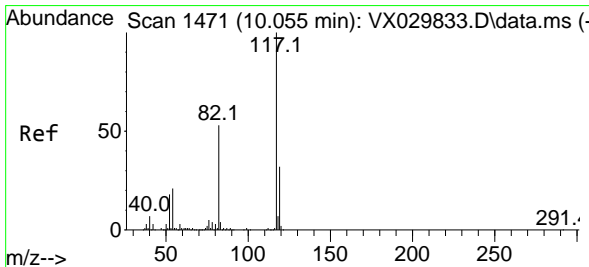
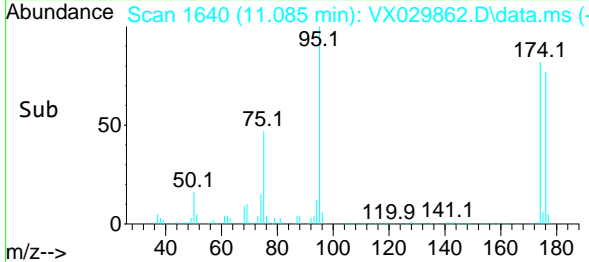
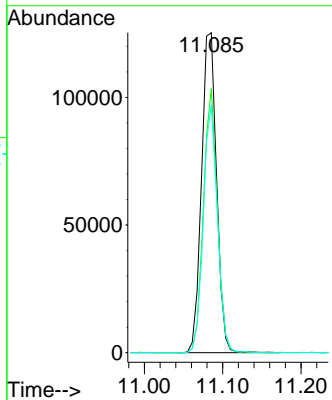


#62
 4-Bromofluorobenzene
 Concen: 46.639 ug/l
 RT: 11.085 min Scan# 1640
 Delta R.T. 0.006 min
 Lab File: VX029862.D
 Acq: 29 Jun 2022 15:20

Instrument : MSVOA_X
 ClientSampleId : TB-20220624

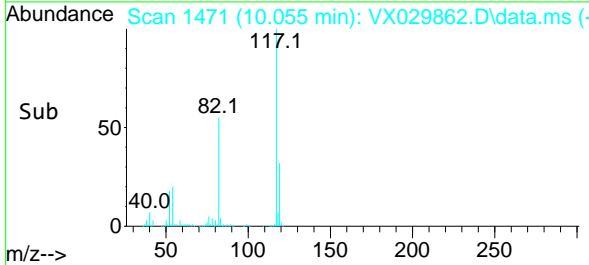
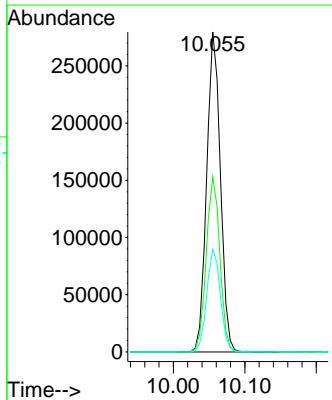
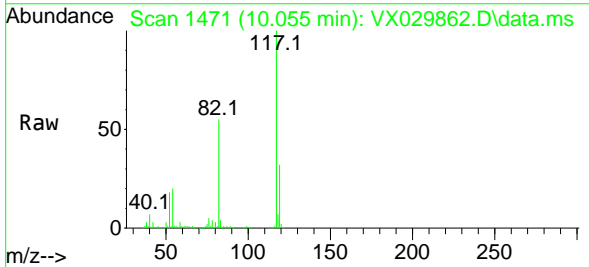


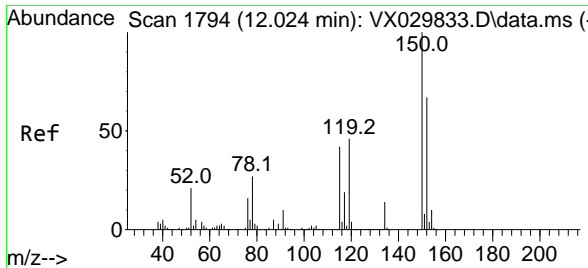
Tgt Ion: 95 Resp: 167041
 Ion Ratio Lower Upper
 95 100
 174 76.5 0.0 149.0
 176 72.4 0.0 146.0



#63
 Chlorobenzene-d5
 Concen: 50.000 ug/l
 RT: 10.055 min Scan# 1471
 Delta R.T. 0.000 min
 Lab File: VX029862.D
 Acq: 29 Jun 2022 15:20

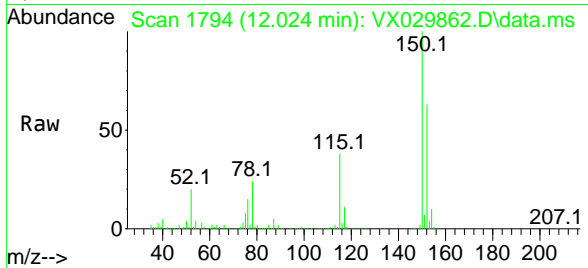
Tgt Ion: 117 Resp: 372010
 Ion Ratio Lower Upper
 117 100
 82 54.7 42.7 64.1
 119 32.1 25.4 38.2





#72
 1,4-Dichlorobenzene-d4
 Concen: 50.000 ug/l
 RT: 12.024 min Scan# 11
 Delta R.T. 0.000 min
 Lab File: VX029862.D
 Acq: 29 Jun 2022 15:20

Instrument :
 MSVOA_X
 ClientSampleId :
 TB-20220624



Tgt Ion:152 Resp: 163848

Ion	Ratio	Lower	Upper
152	100		
115	59.2	40.5	121.5
150	159.5	0.0	347.0

