

Data Path : Z:\VOASRV\HPCHEM1\MSVOA X\DATA\VX063018\
 Data File : VX003106.D
 Acq On : 01 Jul 2018 04:40
 Operator : JC/MD
 Sample : J3800-07
 Misc : 5.0mL/MSVOA X/WATER
 ALS Vial : 40 Sample Multiplier: 1

Instrument :
 MSVOA_X
 ClientSampleID :
 MW-11

Quant Time: Jul 03 11:27:00 2018
 Quant Method : Z:\VOASRV\HPCHEM1\MSVOA_X\METHOD\82X062518W.M
 Quant Title : SW846 8260
 QLast Update : Mon Jun 25 14:38:05 2018
 Response via : Initial Calibration

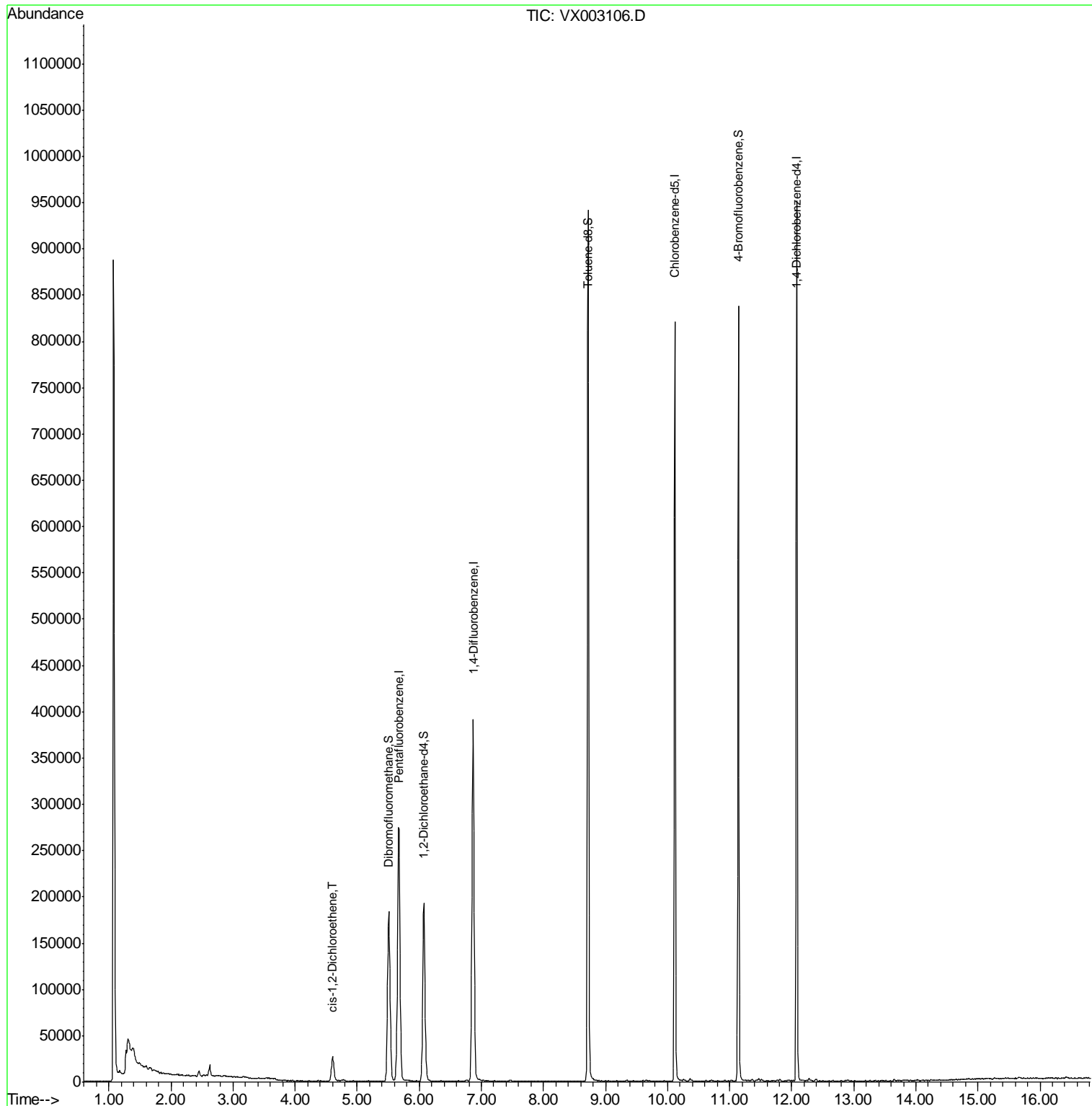
Internal Standards	R.T.	QIon	Response	Conc	Units	Dev(Min)
1) Pentafluorobenzene	5.67	168	279596	50.00	ug/l	0.00
34) 1,4-Difluorobenzene	6.87	114	392269	50.00	ug/l	0.00
63) Chlorobenzene-d5	10.12	117	365614	50.00	ug/l	0.00
72) 1,4-Dichlorobenzene-d4	12.08	152	207773	50.00	ug/l	0.00
System Monitoring Compounds						
33) 1,2-Dichloroethane-d4	6.07	65	181959	47.08	ug/l	0.00
Spiked Amount	50.000		Recovery	=	94.16%	
35) Dibromofluoromethane	5.51	113	151482	48.76	ug/l	0.00
Spiked Amount	50.000		Recovery	=	97.52%	
50) Toluene-d8	8.72	98	549390	48.43	ug/l	0.00
Spiked Amount	50.000		Recovery	=	96.86%	
62) 4-Bromofluorobenzene	11.14	95	192918	44.10	ug/l	0.00
Spiked Amount	50.000		Recovery	=	88.20%	
Target Compounds						Qvalue
27) cis-1,2-Dichloroethene	4.60	96	15212	4.52	ug/l	99

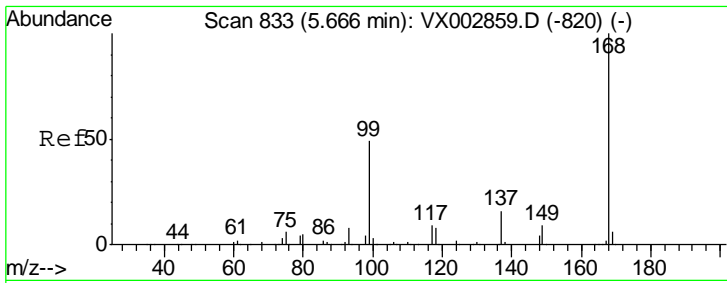
(#) = qualifier out of range (m) = manual integration (+) = signals summed

Data Path : Z:\VOASRV\HPCHEM1\MSVOA X\DATA\VX063018\
 Data File : VX003106.D
 Acq On : 01 Jul 2018 04:40
 Operator : JC/MD
 Sample : J3800-07
 Misc : 5.0mL/MSVOA X/WATER
 ALS Vial : 40 Sample Multiplier: 1

Instrument :
 MSVOA_X
 ClientSampled :
 MW-11

Quant Time: Jul 03 11:27:00 2018
 Quant Method : Z:\VOASRV\HPCHEM1\MSVOA_X\METHOD\82X062518W.M
 Quant Title : SW846 8260
 QLast Update : Mon Jun 25 14:38:05 2018
 Response via : Initial Calibration

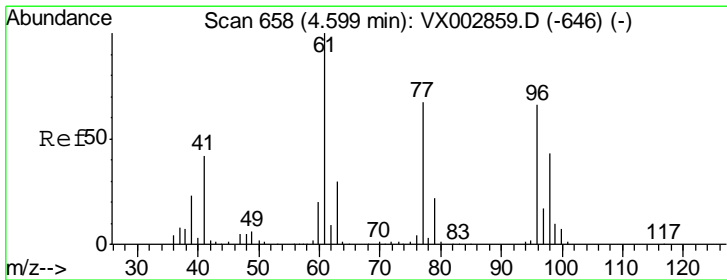
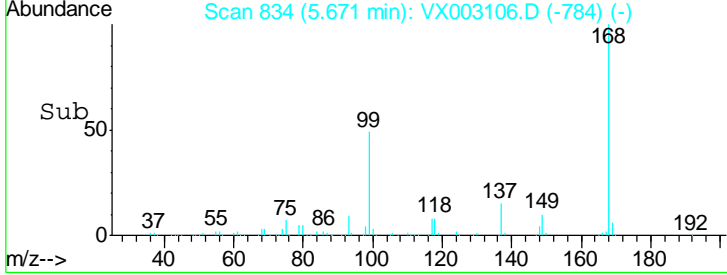
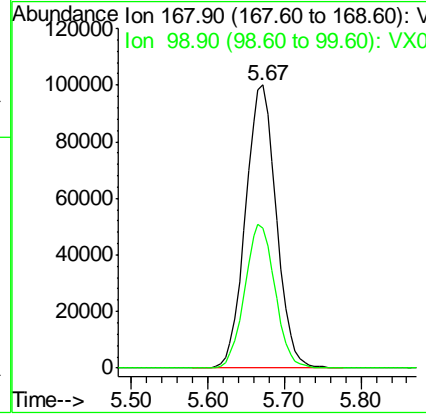
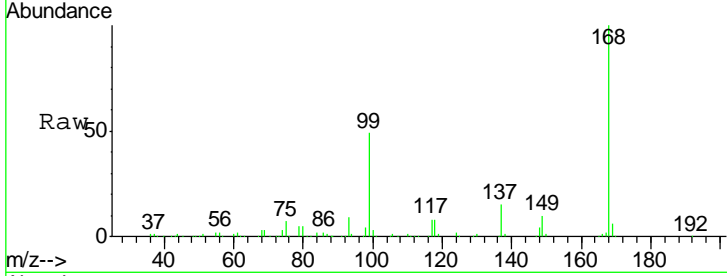




#1
 Pentafluorobenzene
 Concen: 50.00 ug/l
 RT: 5.67 min Scan# 834
 Delta R.T. 0.01 min
 Lab File: VX003106.D
 Acq: 01 Jul 2018 04:40

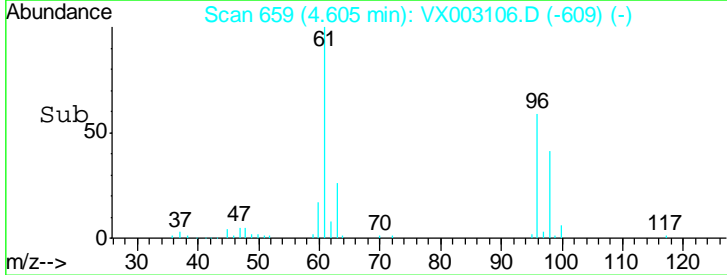
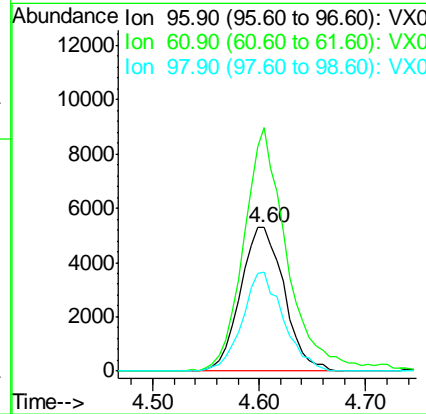
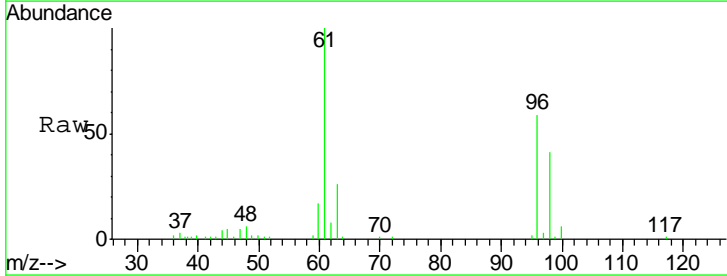
Instrument : MSVOA_X
 ClientSampled : MW-11

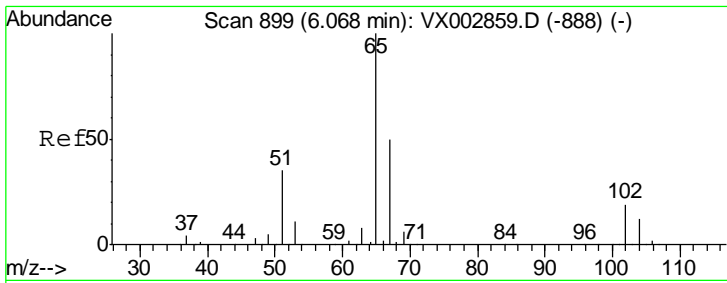
Tgt Ion	Resp	Lower	Upper
168	100		
99	49.5	39.3	58.9



#27
 cis-1,2-Dichloroethene
 Concen: 4.52 ug/l
 RT: 4.60 min Scan# 659
 Delta R.T. 0.01 min
 Lab File: VX003106.D
 Acq: 01 Jul 2018 04:40

Tgt Ion	Resp	Lower	Upper
96	100		
61	167.4	0.0	330.2
98	64.8	0.0	130.2

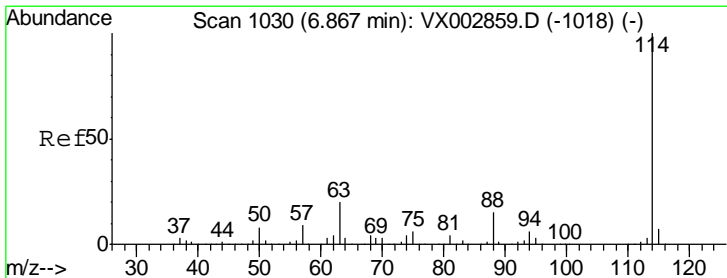
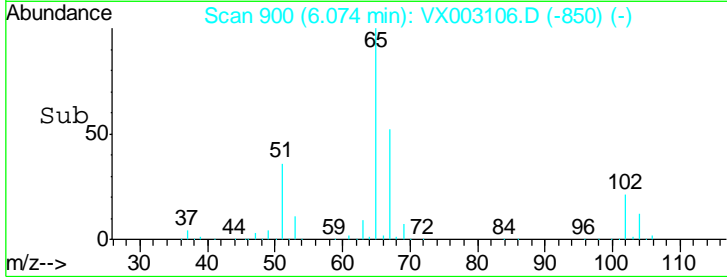
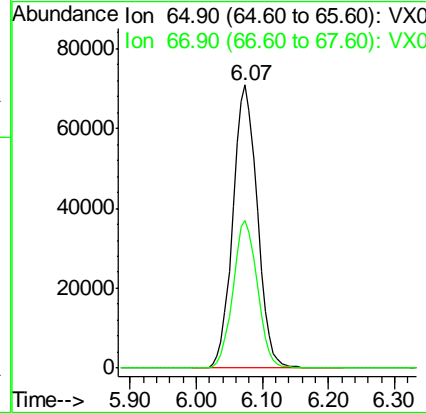
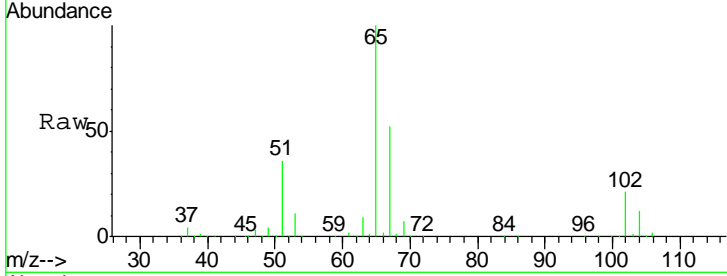




#33
 1,2-Dichloroethane-d4
 Concen: 47.08 ug/l
 RT: 6.07 min Scan# 900
 Delta R.T. 0.01 min
 Lab File: VX003106.D
 Acq: 01 Jul 2018 04:40

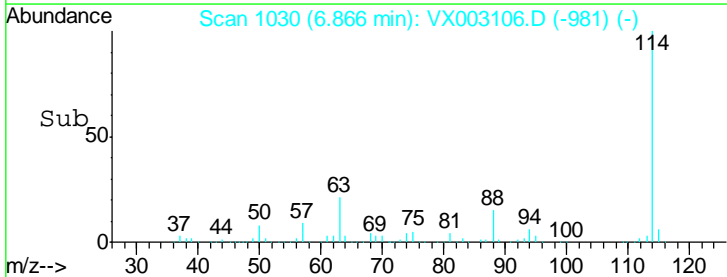
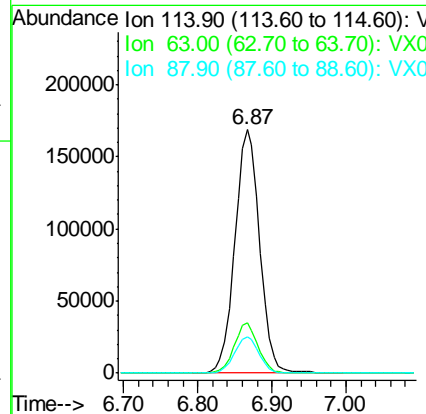
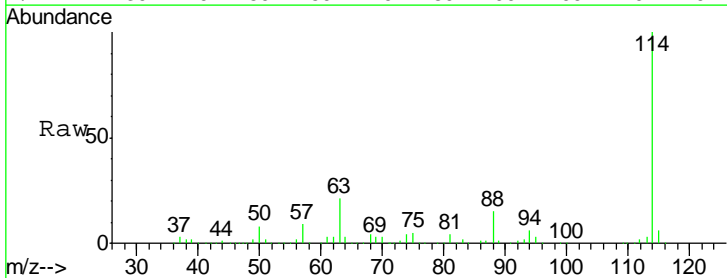
Instrument :
 MSVOA_X
 ClientSampled :
 MW-11

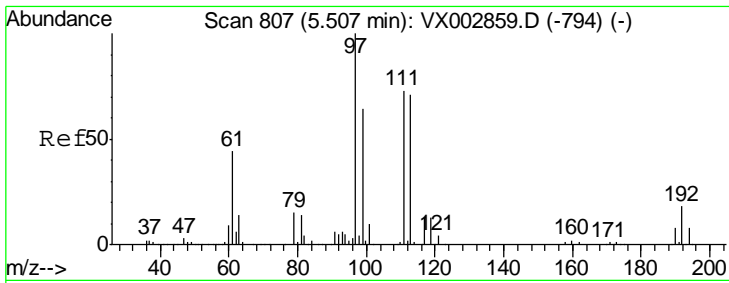
Tgt Ion: 65 Resp: 181959
 Ion Ratio Lower Upper
 65 100
 67 52.0 0.0 102.6



#34
 1,4-Difluorobenzene
 Concen: 50.00 ug/l
 RT: 6.87 min Scan# 1030
 Delta R.T. -0.00 min
 Lab File: VX003106.D
 Acq: 01 Jul 2018 04:40

Tgt Ion: 114 Resp: 392269
 Ion Ratio Lower Upper
 114 100
 63 20.5 0.0 41.4
 88 15.1 0.0 30.0

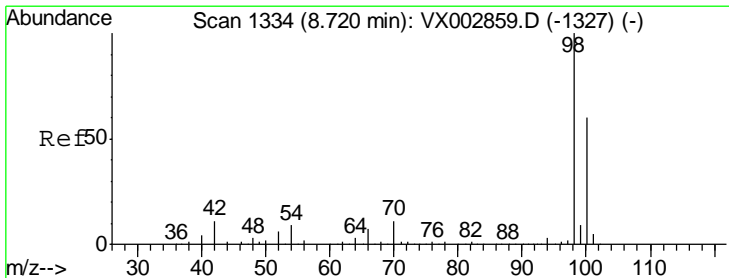
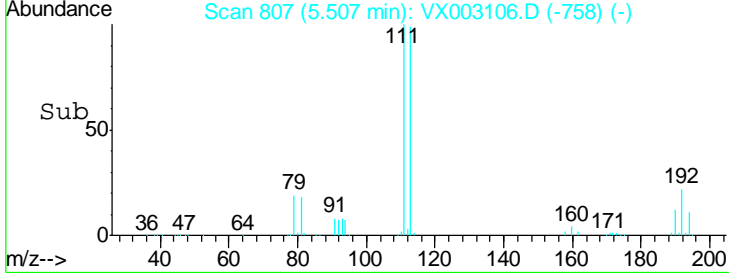
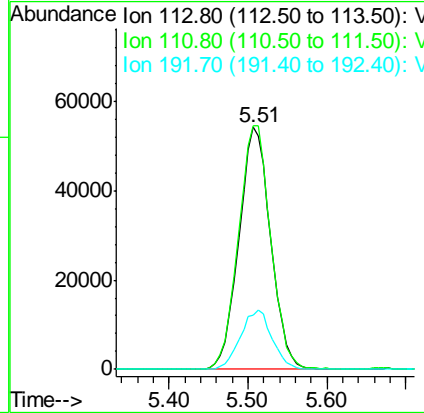
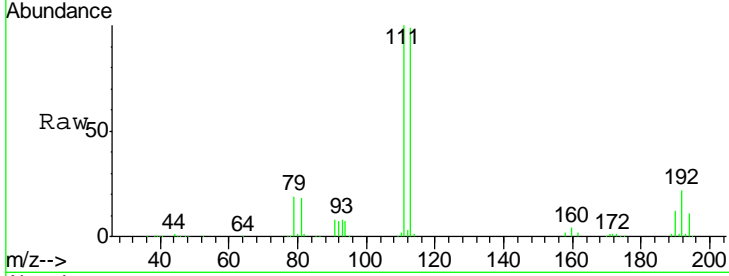




#35
 Dibromofluoromethane
 Concen: 48.76 ug/l
 RT: 5.51 min Scan# 807
 Delta R.T. -0.00 min
 Lab File: VX003106.D
 Acq: 01 Jul 2018 04:40

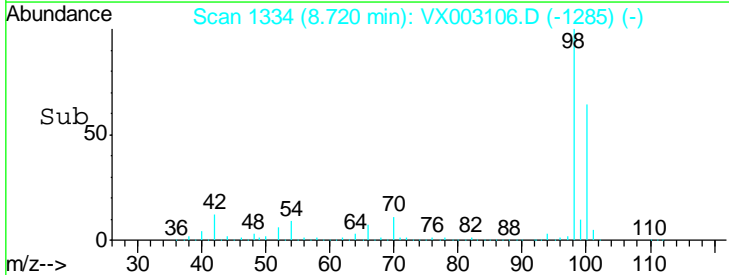
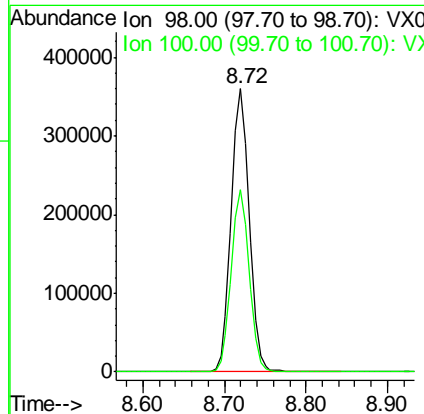
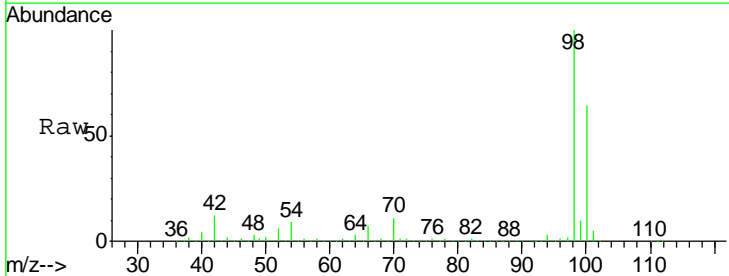
Instrument :
 MSVOA_X
 ClientSampled :
 MW-11

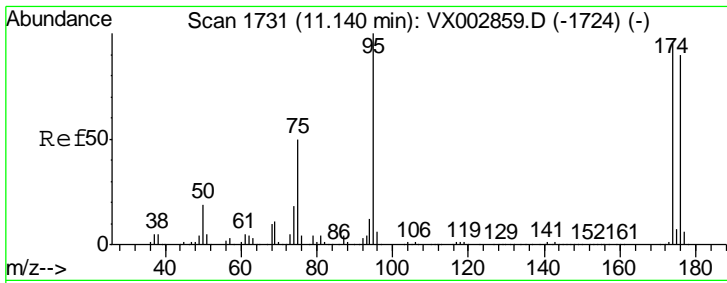
Tgt Ion	Resp	Lower	Upper
113	151482		
111	102.0	81.4	122.0
192	24.4	19.1	28.7



#50
 Toluene-d8
 Concen: 48.43 ug/l
 RT: 8.72 min Scan# 1334
 Delta R.T. 0.00 min
 Lab File: VX003106.D
 Acq: 01 Jul 2018 04:40

Tgt Ion	Resp	Lower	Upper
98	549390		
100	63.9	50.9	76.3

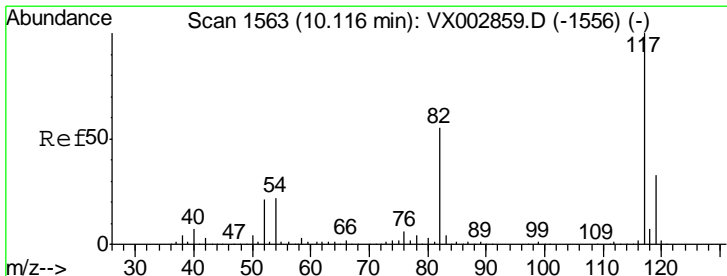
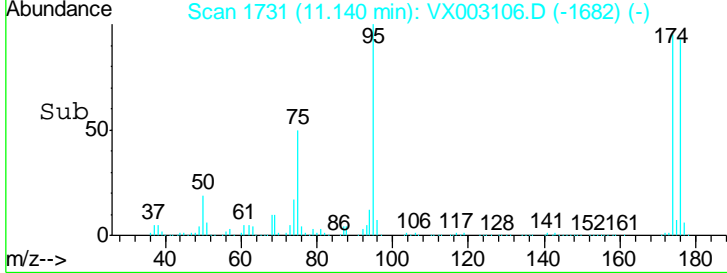
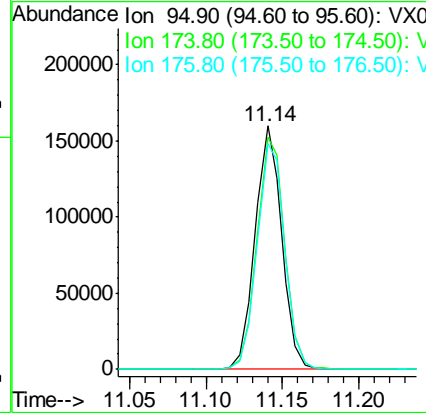
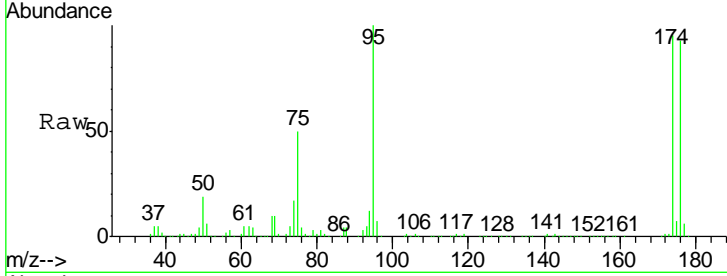




#62
 4-Bromofluorobenzene
 Concen: 44.10 ug/l
 RT: 11.14 min Scan# 1731
 Delta R.T. 0.00 min
 Lab File: VX003106.D
 Acq: 01 Jul 2018 04:40

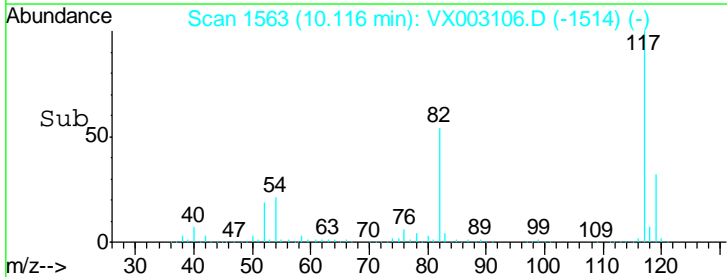
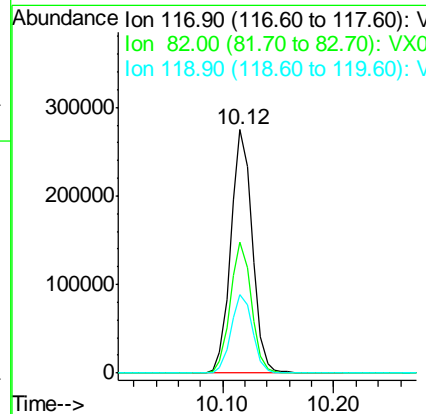
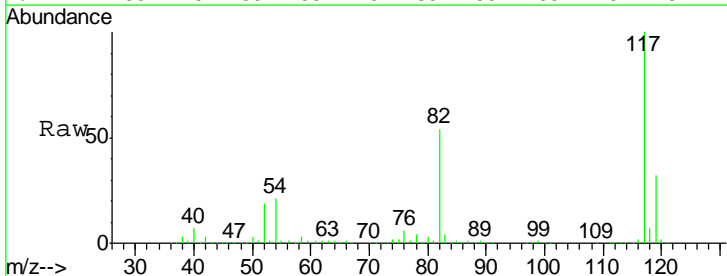
Instrument :
 MSVOA_X
 ClientSampled :
 MW-11

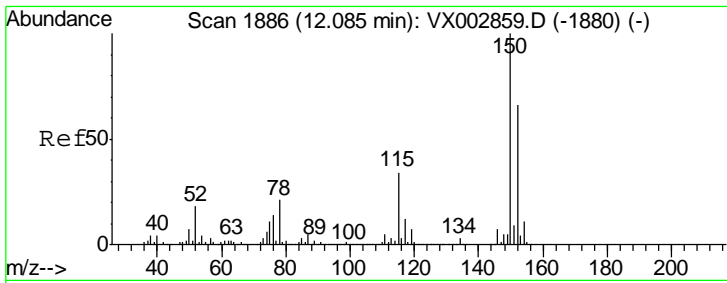
Tgt Ion	Resp	Lower	Upper
95	192918		
174	99.6	0.0	187.4
176	96.3	0.0	181.0



#63
 Chlorobenzene-d5
 Concen: 50.00 ug/l
 RT: 10.12 min Scan# 1563
 Delta R.T. -0.00 min
 Lab File: VX003106.D
 Acq: 01 Jul 2018 04:40

Tgt Ion	Resp	Lower	Upper
117	365614		
82	54.0	45.0	67.4
119	32.4	25.8	38.6





#72
 1,4-Dichlorobenzene-d4
 Concen: 50.00 ug/l
 RT: 12.08 min Scan# 1885
 Delta R.T. -0.01 min
 Lab File: VX003106.D
 Acq: 01 Jul 2018 04:40

Instrument :
 MSVOA_X
 ClientSampled :
 MW-11

Tot Ion	Resp	Lower	Upper
152	100		
115	54.0	40.1	120.2
150	156.2	0.0	347.2

