

Data Path : Z:\VOASRV\HPCHEM1\MSVOA X\DATA\VX063020\
 Data File : VX017047.D
 Acq On : 30 Jun 2020 16:02
 Operator : JC/SP
 Sample : L3147-03
 Misc : 5.0mL/MSVOA X/WATER
 ALS Vial : 17 Sample Multiplier: 1

Instrument :
 MSVOA_X
 ClientSampleId :
 12BR-20200626

Quant Time: Jul 01 08:07:17 2020
 Quant Method : Z:\VOASRV\HPCHEM1\MSVOA_X\METHOD\82X062920W.M
 Quant Title : SW846 8260
 QLast Update : Mon Jun 29 17:10:38 2020
 Response via : Initial Calibration

Internal Standards	R.T.	QIon	Response	Conc	Units	Dev(Min)
1) Pentafluorobenzene	5.63	168	234903	50.00	ug/l	0.00
34) 1,4-Difluorobenzene	6.83	114	404677	50.00	ug/l	0.00
63) Chlorobenzene-d5	10.10	117	416078	50.00	ug/l	0.00
72) 1,4-Dichlorobenzene-d4	12.06	152	212418	50.00	ug/l	0.00

System Monitoring Compounds

33) 1,2-Dichloroethane-d4	6.04	65	155020	53.53	ug/l	0.00
Spiked Amount	50.000		Recovery	=	107.06%	
35) Dibromofluoromethane	5.47	113	132332	51.69	ug/l	0.00
Spiked Amount	50.000		Recovery	=	103.38%	
50) Toluene-d8	8.70	98	488275	51.58	ug/l	0.00
Spiked Amount	50.000		Recovery	=	103.16%	
62) 4-Bromofluorobenzene	11.12	95	201221	54.38	ug/l	0.00
Spiked Amount	50.000		Recovery	=	108.76%	

Target Compounds

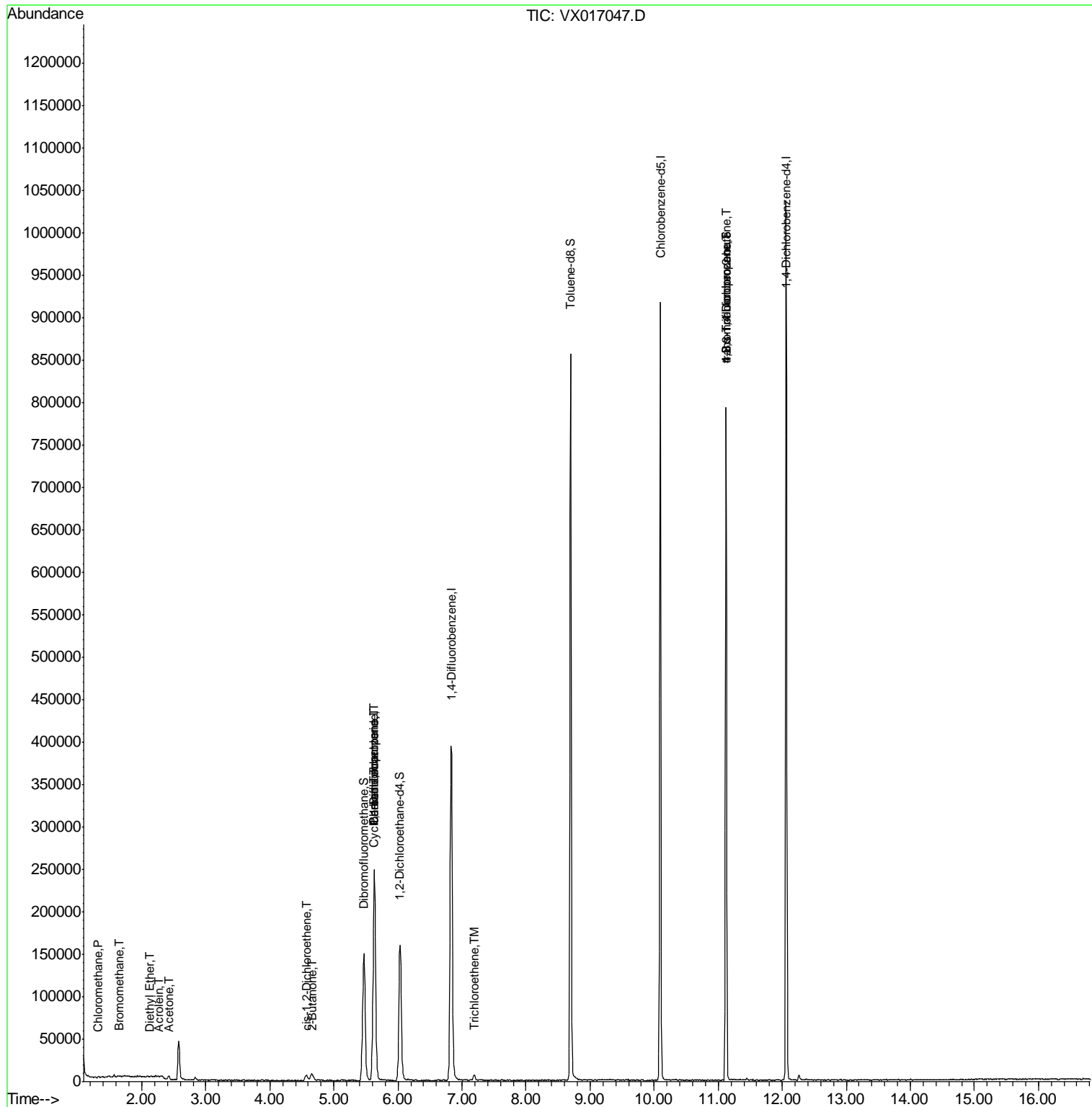
						Qvalue
3) Chloromethane	1.31	50	866	0.315	ug/l #	87
5) Bromomethane	1.65	94	372	0.276	ug/l #	36
8) Diethyl Ether	2.12	74	94	0.439	ug/l	53
13) Acrolein	2.26	56	257	0.778	ug/l #	57
16) Acetone	2.42	43	4385	4.048	ug/l	91
20) Methylene Chloride	2.83	84	1154	Below Cal	#	82
25) 2-Butanone	4.67	43	763	0.423	ug/l #	49
27) cis-1,2-Dichloroethene	4.57	96	4120	1.410	ug/l	90
31) Cyclohexane	5.62	56	4865	1.244	ug/l #	22
36) 1,1-Dichloropropene	5.63	75	16320	4.267	ug/l #	52
38) Carbon Tetrachloride	5.63	117	23149	5.495	ug/l #	16
44) Trichloroethene	7.20	130	2587	0.528	ug/l	86
76) 1,2,3-Trichloropropane	11.12	75	99746	23.879	ug/l #	37
81) trans-1,4-Dichloro-2-buten	11.12	75	99746	61.839	ug/l #	13
88) 1,4-Dichlorobenzene	12.08	146	552	Below Cal	#	1

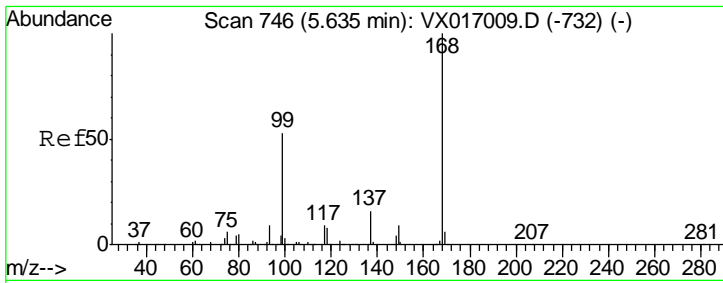
(#) = qualifier out of range (m) = manual integration (+) = signals summed

Data Path : Z:\VOASRV\HPCHEM1\MSVOA X\DATA\VX063020\
Data File : VX017047.D
Acq On : 30 Jun 2020 16:02
Operator : JC/SP
Sample : L3147-03
Misc : 5.0mL/MSVOA X/WATER
ALS Vial : 17 Sample Multiplier: 1

Instrument :
MSVOA_X
Client Sampled :
12BR-20200626

Quant Time: Jul 01 08:07:17 2020
Quant Method : Z:\VOASRV\HPCHEM1\MSVOA_X\METHOD\82X062920W.M
Quant Title : SW846 8260
QLast Update : Mon Jun 29 17:10:38 2020
Response via : Initial Calibration

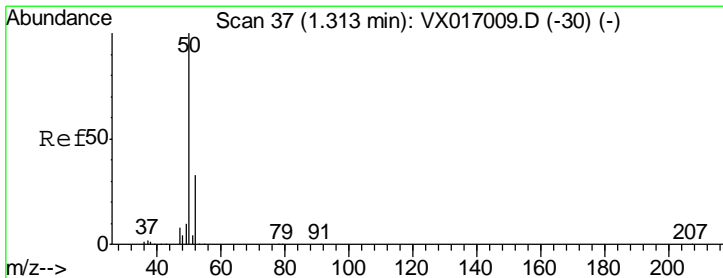
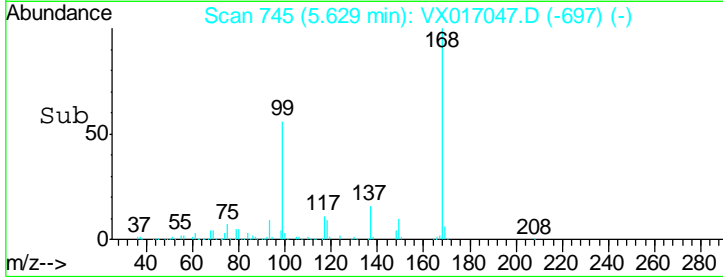
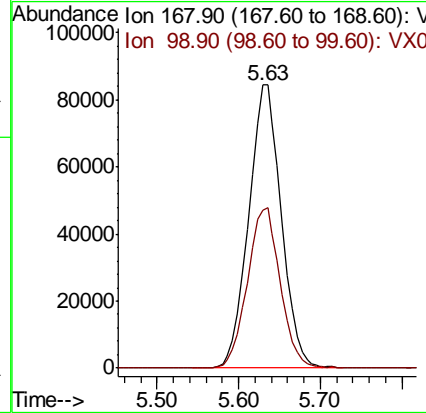
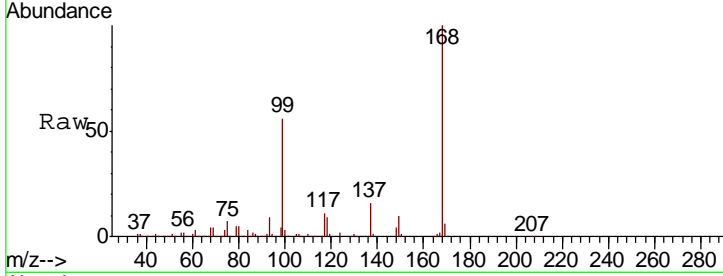




#1
 Pentafluorobenzene
 Concen: 50.000 ug/l
 RT: 5.63 min Scan# 745
 Delta R.T. -0.01 min
 Lab File: VX017047.D
 Acq: 30 Jun 2020 16:02

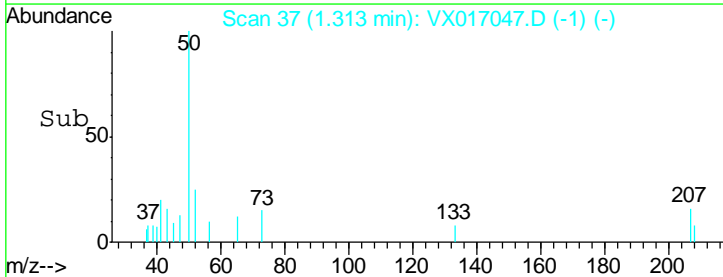
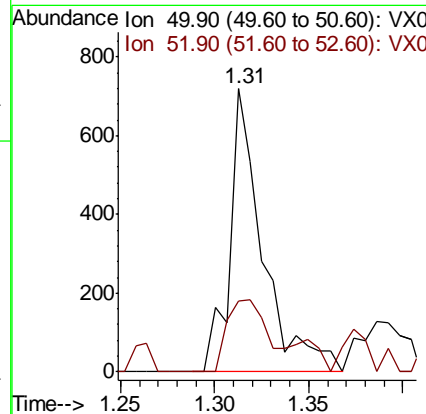
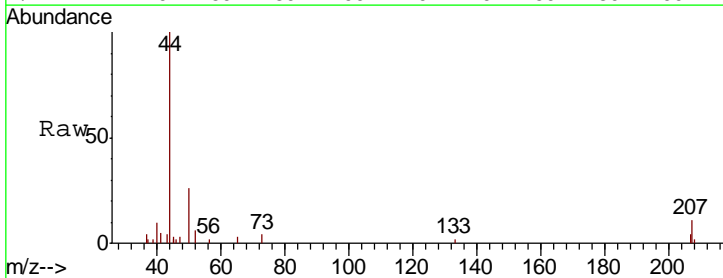
Instrument :
 MSVOA_X
 ClientSampled :
 12BR-20200626

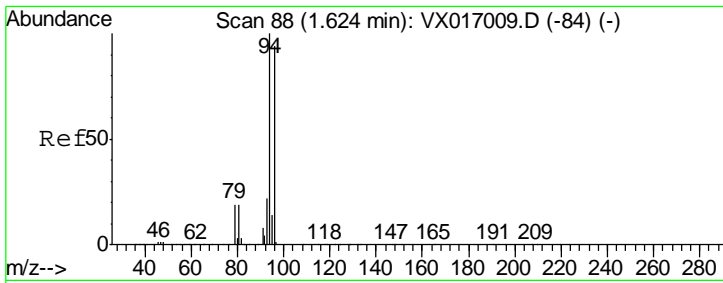
Tgt Ion: 168 Resp: 234903
 Ion Ratio Lower Upper
 168 100
 99 55.9 42.6 64.0



#3
 Chloromethane
 Concen: 0.315 ug/l
 RT: 1.31 min Scan# 37
 Delta R.T. -0.00 min
 Lab File: VX017047.D
 Acq: 30 Jun 2020 16:02

Tgt Ion: 50 Resp: 866
 Ion Ratio Lower Upper
 50 100
 52 25.0 26.1 39.1#

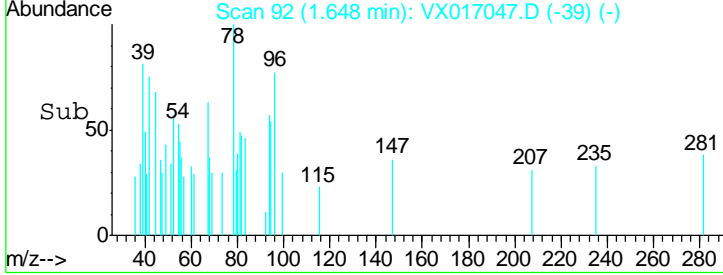
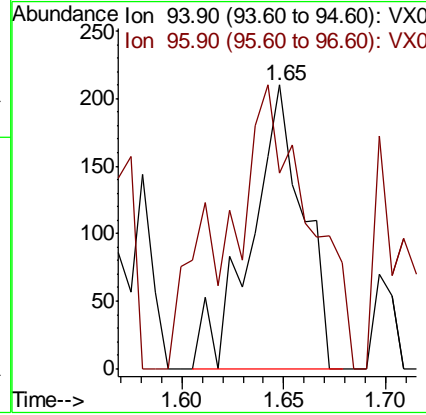
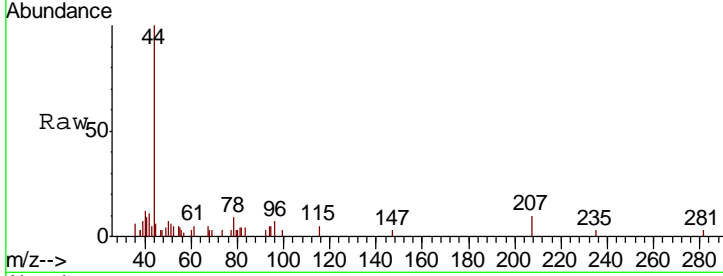




#5
 Bromomethane
 Concen: 0.276 ug/l
 RT: 1.65 min Scan# 92
 Delta R.T. 0.03 min
 Lab File: VX017047.D
 Acq: 30 Jun 2020 16:02

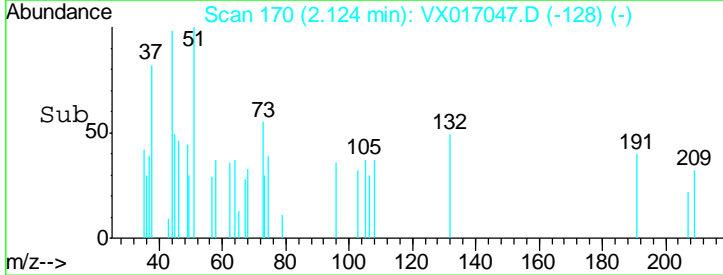
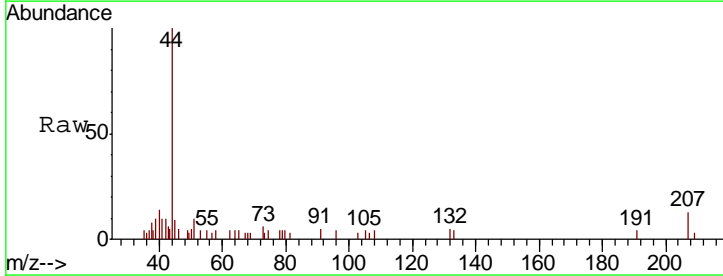
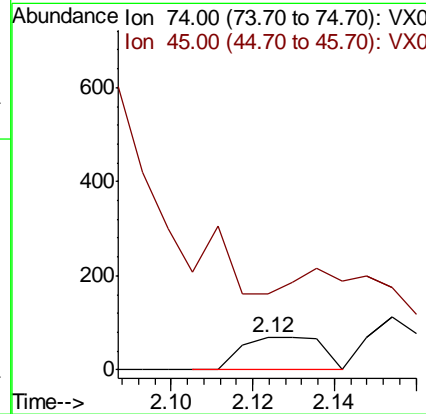
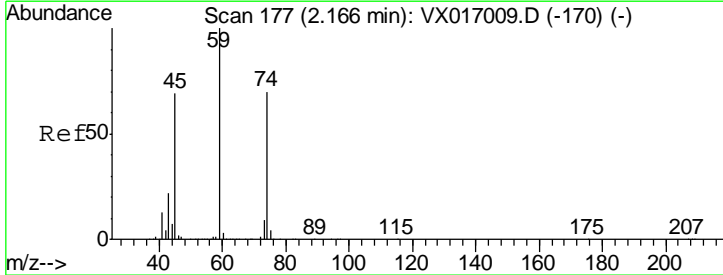
Instrument :
 MSVOA_X
ClientSampled :
 12BR-20200626

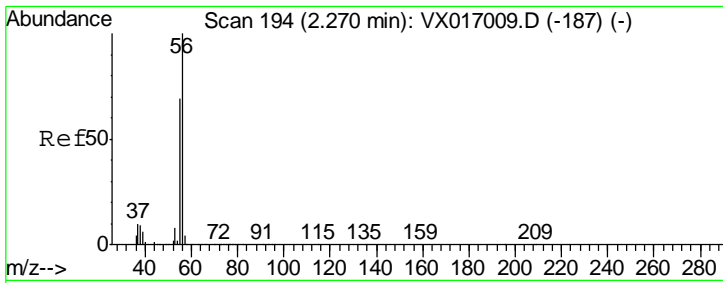
Tgt Ion: 94 Resp: 372
 Ion Ratio Lower Upper
 94 100
 96 31.9 75.0 112.4#



#8
 Diethyl Ether
 Concen: 0.439 ug/l
 RT: 2.12 min Scan# 170
 Delta R.T. -0.04 min
 Lab File: VX017047.D
 Acq: 30 Jun 2020 16:02

Tgt Ion: 74 Resp: 94
 Ion Ratio Lower Upper
 74 100
 45 146.8 49.8 149.3

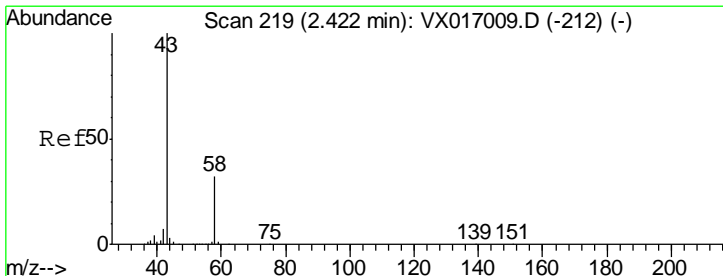
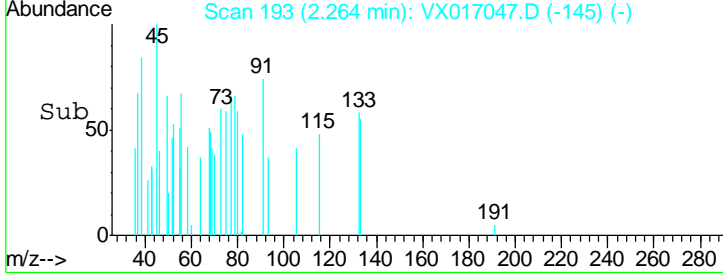
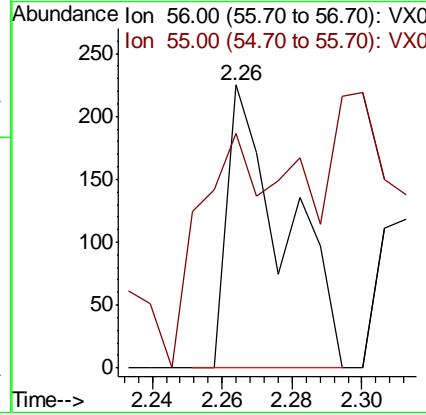
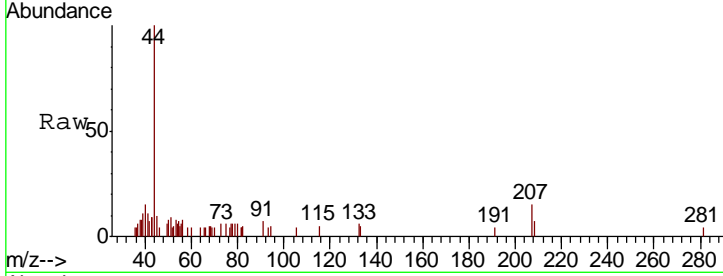




#13
 Acrolein
 Concen: 0.778 ug/l
 RT: 2.26 min Scan# 193
 Delta R.T. -0.01 min
 Lab File: VX017047.D
 Acq: 30 Jun 2020 16:02

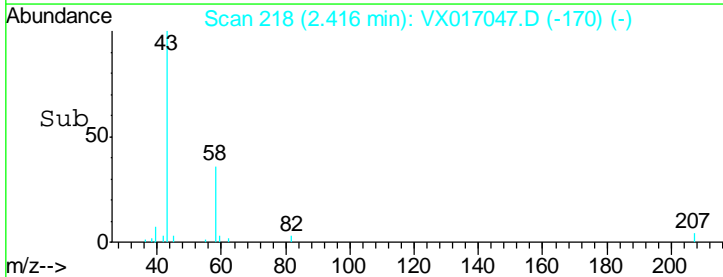
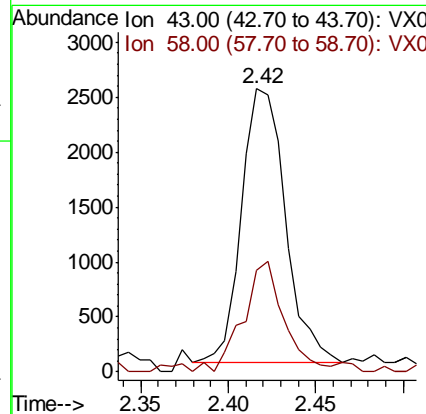
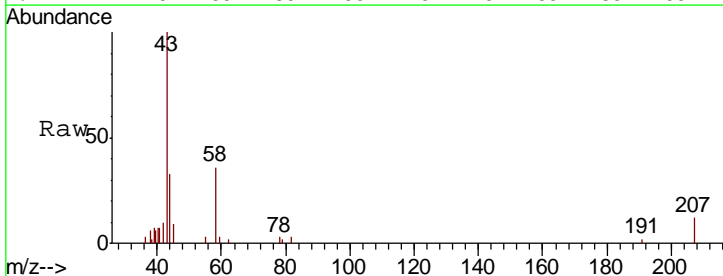
Instrument : MSVOA_X
 ClientSampled : 12BR-20200626

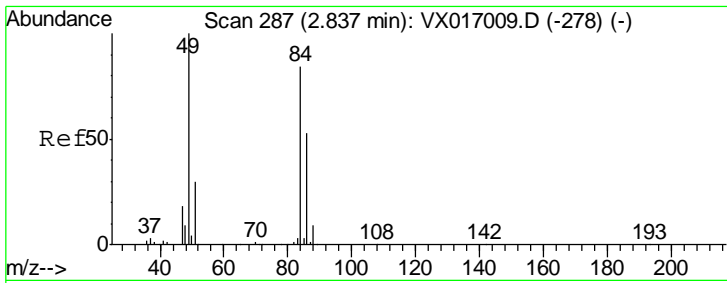
Tgt Ion	Resp	Lower	Upper
56	100		
55	105.1	55.7	83.5#



#16
 Acetone
 Concen: 4.048 ug/l
 RT: 2.42 min Scan# 218
 Delta R.T. -0.01 min
 Lab File: VX017047.D
 Acq: 30 Jun 2020 16:02

Tgt Ion	Resp	Lower	Upper
43	100		
58	37.0	25.7	38.5

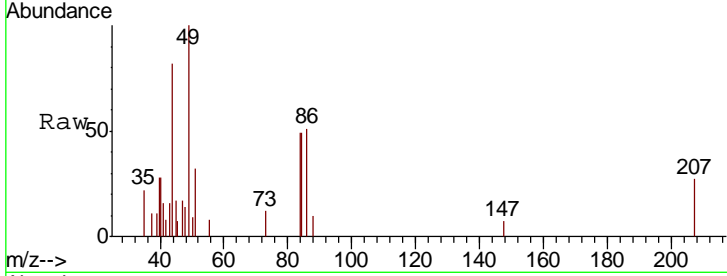




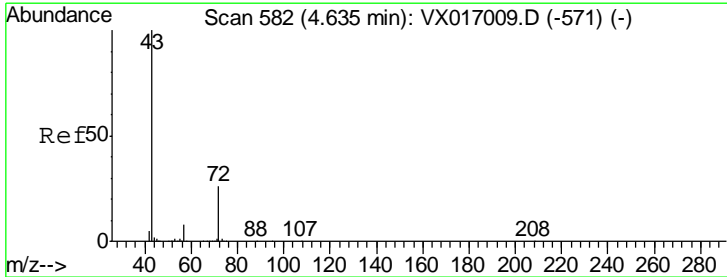
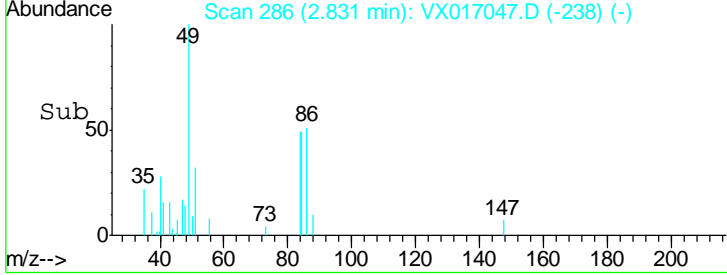
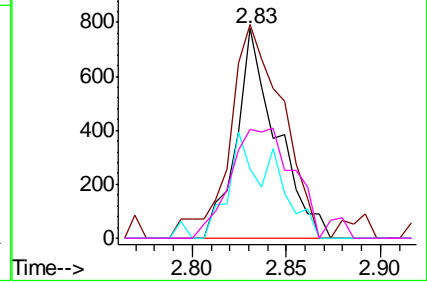
#20
 Methylene Chloride
 Concen: Below Cal
 RT: 2.83 min Scan# 286
 Delta R.T. -0.01 min
 Lab File: VX017047.D
 Acq: 30 Jun 2020 16:02

Instrument : MSVOA_X
 ClientSampleId : 12BR-20200626

Tgt Ion	Resp	Lower	Upper
84	1154		
49	93.1	94.7	142.1#
51	32.9	28.6	42.8
86	51.7	50.5	75.7

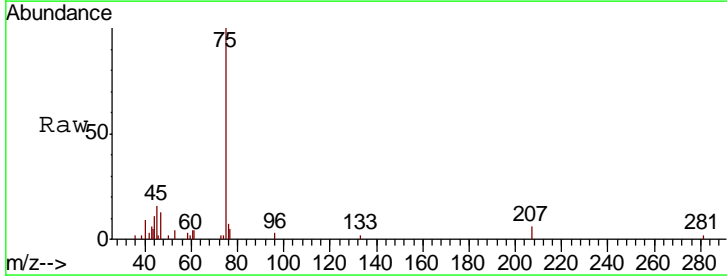


Abundance Ion 83.90 (83.60 to 84.60): VX0
 Ion 48.90 (48.60 to 49.60): VX0
 Ion 50.90 (50.60 to 51.60): VX0
 Ion 85.90 (85.60 to 86.60): VX0

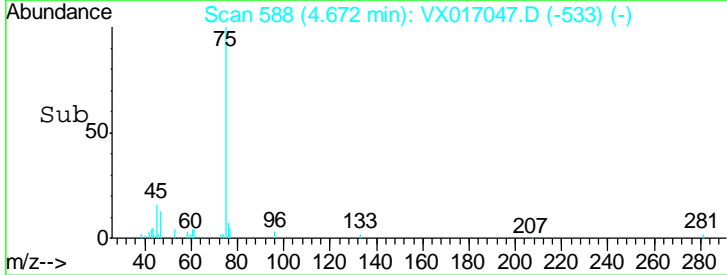
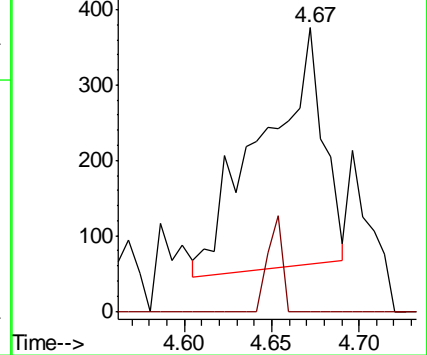


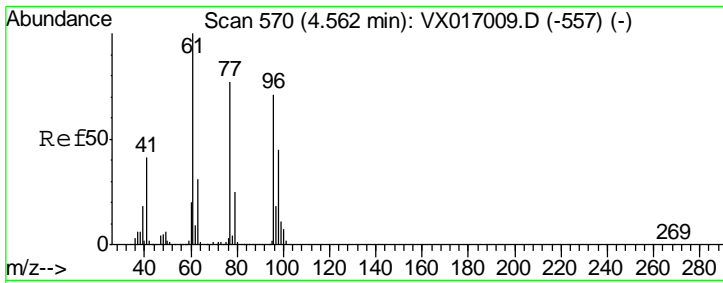
#25
 2-Butanone
 Concen: 0.423 ug/l
 RT: 4.67 min Scan# 588
 Delta R.T. 0.04 min
 Lab File: VX017047.D
 Acq: 30 Jun 2020 16:02

Tgt Ion	Resp	Lower	Upper
43	763		
72	0.0	20.8	31.2#



Abundance Ion 43.00 (42.70 to 43.70): VX0
 Ion 72.00 (71.70 to 72.70): VX0

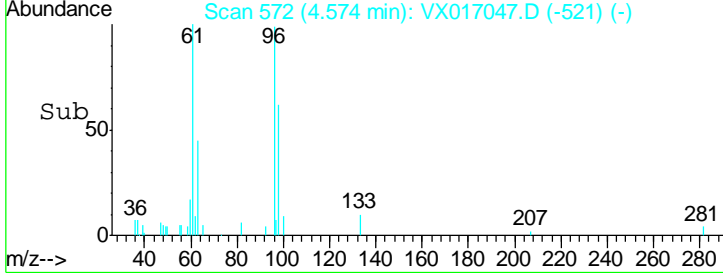
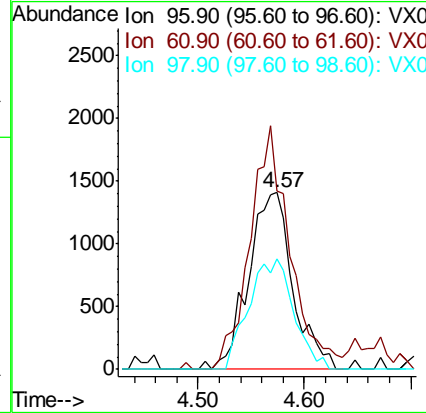
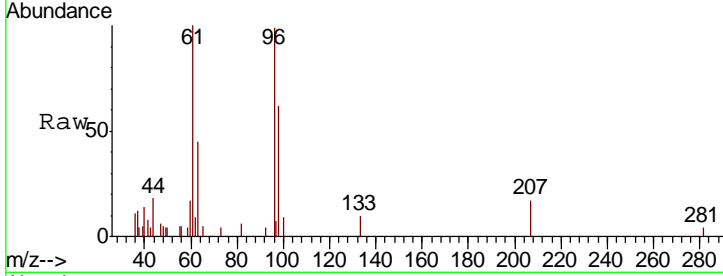




#27
 cis-1,2-Dichloroethene
 Concen: 1.410 ug/l
 RT: 4.57 min Scan# 572
 Delta R.T. 0.01 min
 Lab File: VX017047.D
 Acq: 30 Jun 2020 16:02

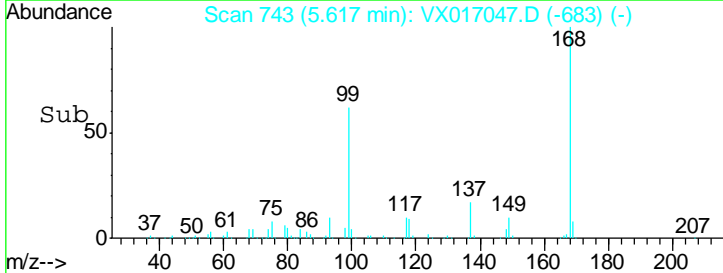
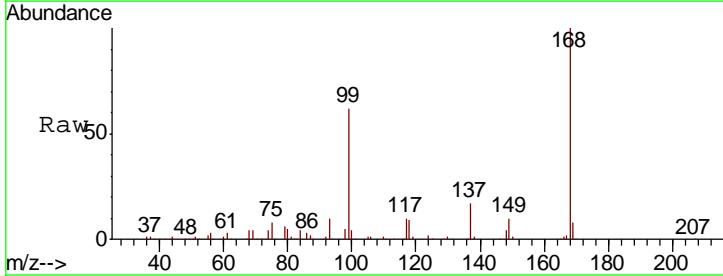
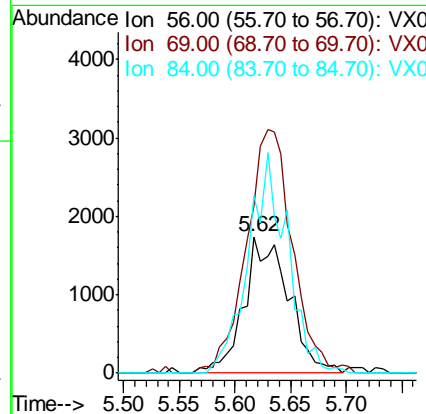
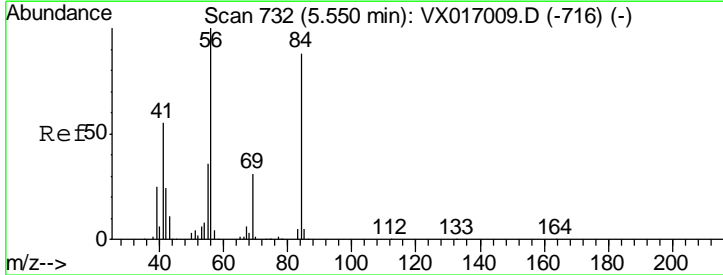
Instrument :
 MSVOA_X
ClientSampled :
 12BR-20200626

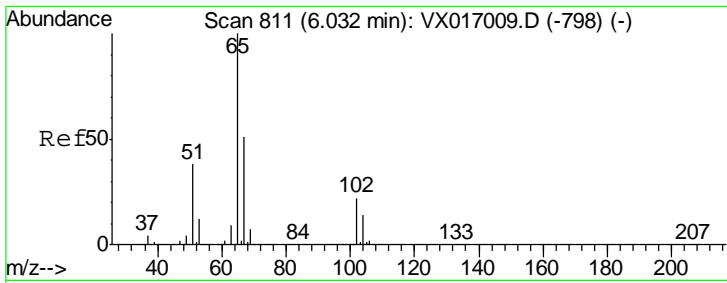
Tgt Ion	Resp	Lower	Upper
96	4120		
96	100		
61	124.2	0.0	282.8
98	63.3	0.0	127.6



#31
 Cyclohexane
 Concen: 1.244 ug/l
 RT: 5.62 min Scan# 743
 Delta R.T. 0.07 min
 Lab File: VX017047.D
 Acq: 30 Jun 2020 16:02

Tgt Ion	Resp	Lower	Upper
56	4865		
56	100		
69	122.4	25.0	37.4#
84	129.6	69.1	103.7#

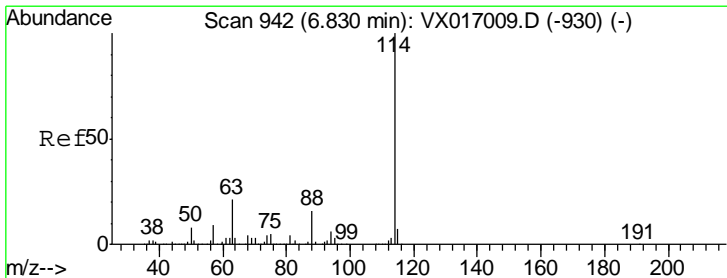
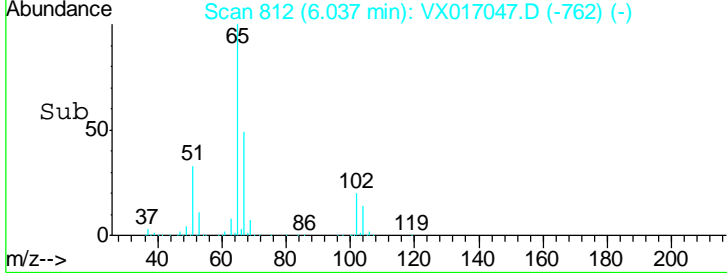
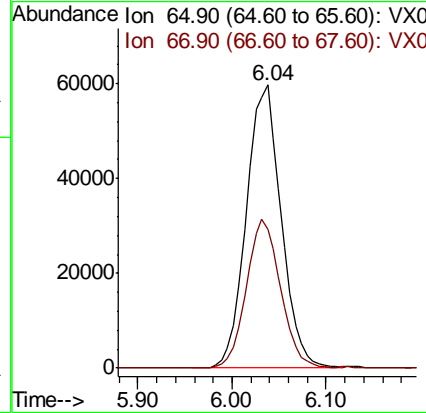
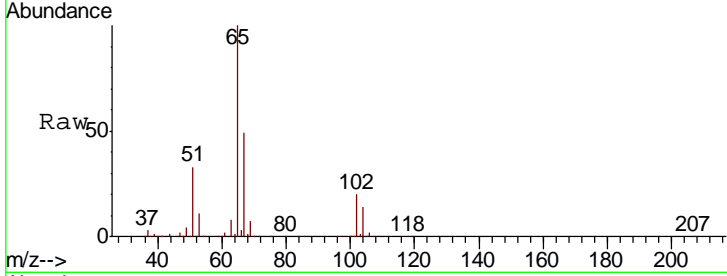




#33
 1,2-Dichloroethane-d4
 Concen: 53.531 ug/l
 RT: 6.04 min Scan# 812
 Delta R.T. 0.01 min
 Lab File: VX017047.D
 Acq: 30 Jun 2020 16:02

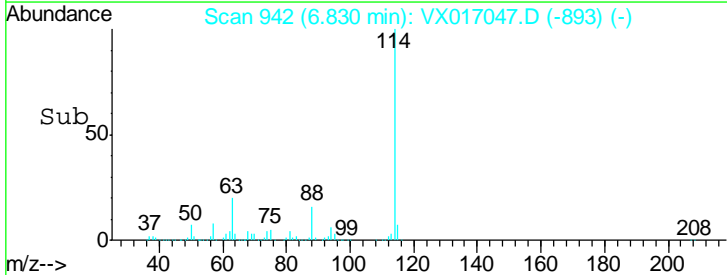
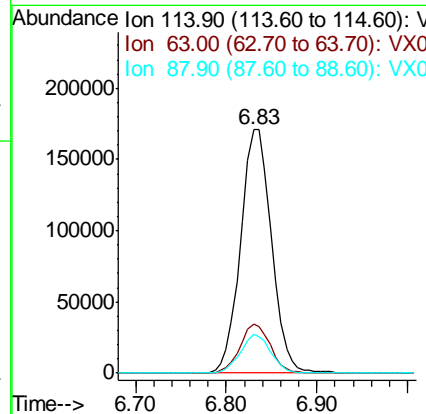
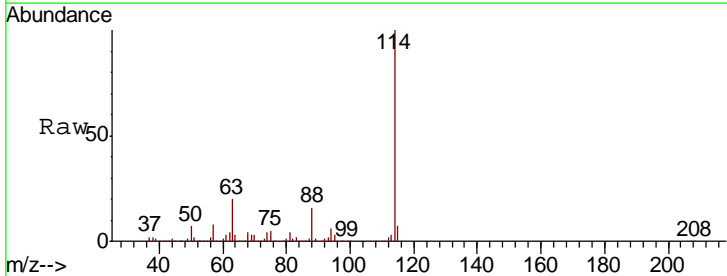
Instrument :
 MSVOA_X
ClientSampled :
 12BR-20200626

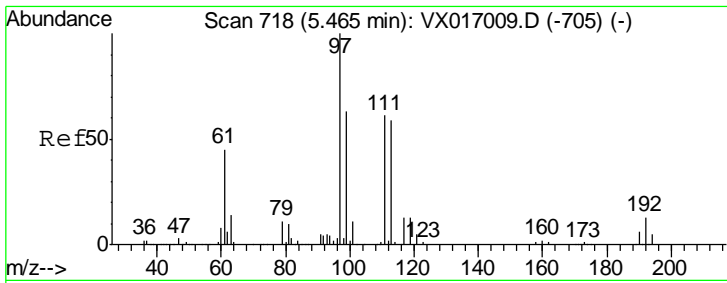
Tgt Ion	Resp	Lower	Upper
65	155020		
67	51.6	0.0	103.8



#34
 1,4-Difluorobenzene
 Concen: 50.000 ug/l
 RT: 6.83 min Scan# 942
 Delta R.T. -0.00 min
 Lab File: VX017047.D
 Acq: 30 Jun 2020 16:02

Tgt Ion	Resp	Lower	Upper
114	404677		
63	20.1	0.0	41.4
88	15.9	0.0	32.4

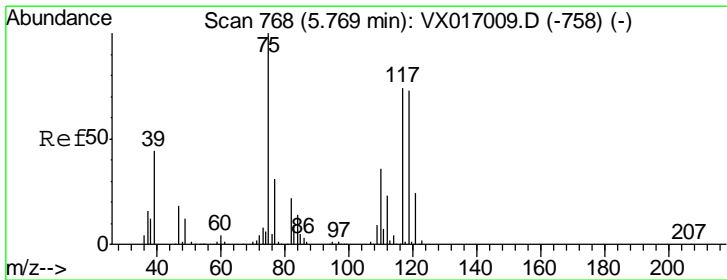
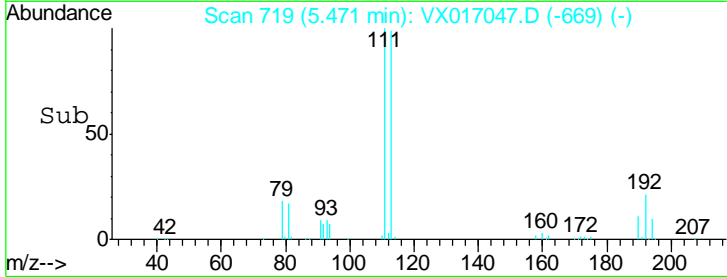
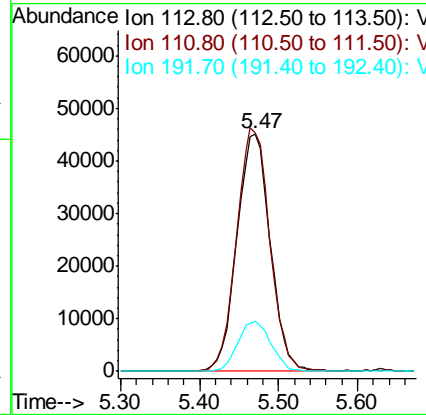
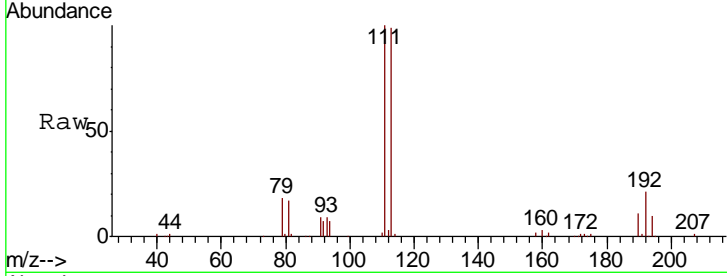




#35
 Dibromofluoromethane
 Concen: 51.695 ug/l
 RT: 5.47 min Scan# 719
 Delta R.T. 0.01 min
 Lab File: VX017047.D
 Acq: 30 Jun 2020 16:02

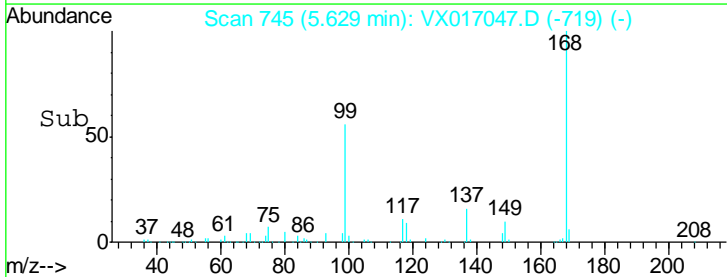
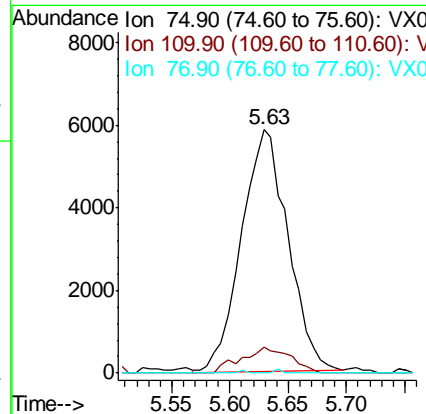
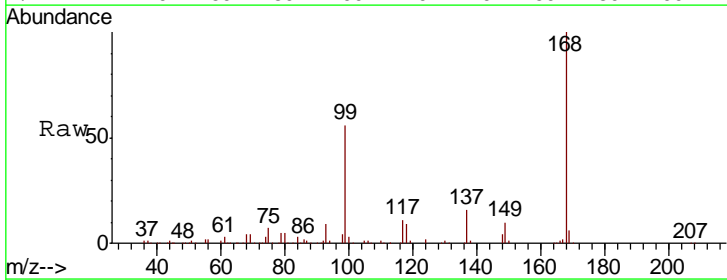
Instrument :
 MSVOA_X
 ClientSampled :
 12BR-20200626

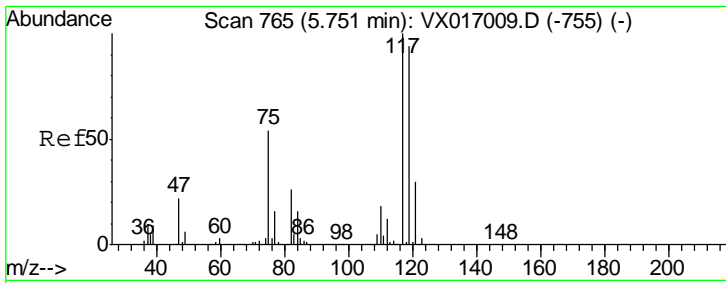
Tgt Ion	Resp	Lower	Upper
113	100		
111	102.6	81.9	122.9
192	21.1	16.7	25.1



#36
 1,1-Dichloropropene
 Concen: 4.267 ug/l
 RT: 5.63 min Scan# 745
 Delta R.T. -0.14 min
 Lab File: VX017047.D
 Acq: 30 Jun 2020 16:02

Tgt Ion	Resp	Lower	Upper
75	100		
110	11.3	18.1	54.1#
77	0.2	24.6	37.0#

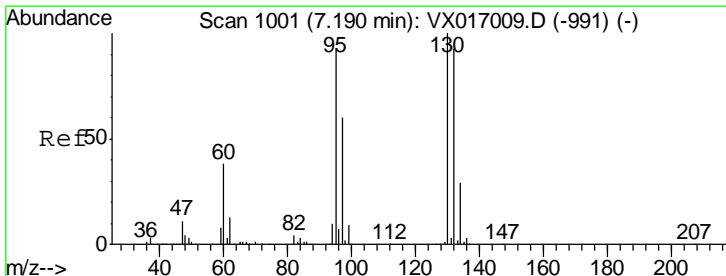
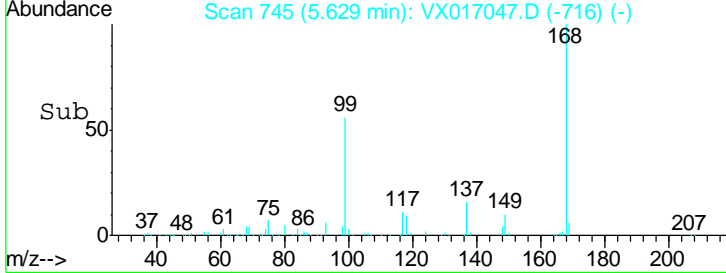
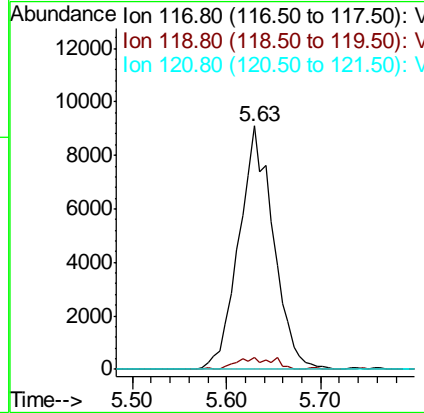
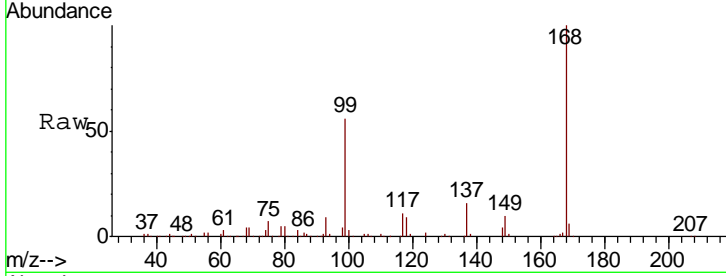




#38
 Carbon Tetrachloride
 Concen: 5.495 ug/l
 RT: 5.63 min Scan# 745
 Delta R.T. -0.12 min
 Lab File: VX017047.D
 Acq: 30 Jun 2020 16:02

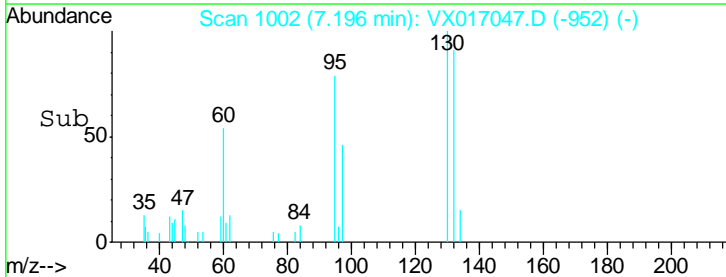
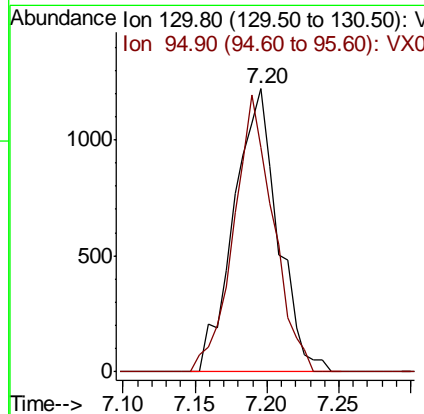
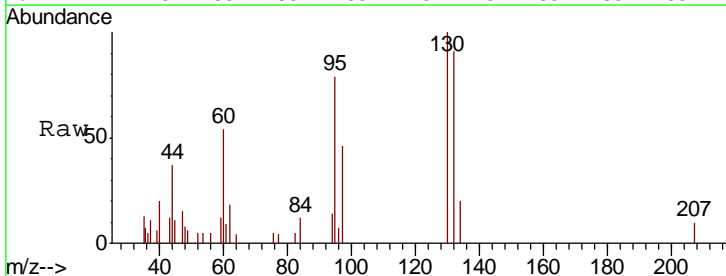
Instrument :
 MSVOA_X
 ClientSampled :
 12BR-20200626

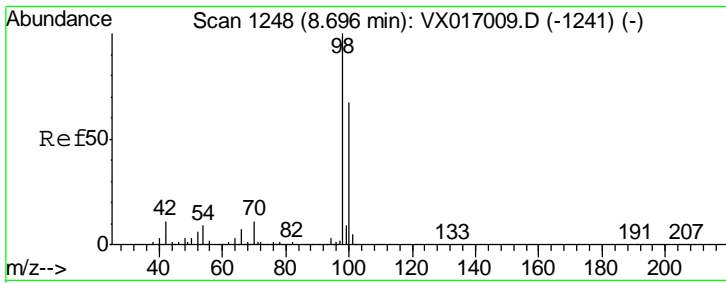
Tgt Ion	Resp	Lower	Upper
117	23149		
119	4.7	75.4	113.0#
121	0.0	23.8	35.6#



#44
 Trichloroethene
 Concen: 0.528 ug/l
 RT: 7.20 min Scan# 1002
 Delta R.T. 0.01 min
 Lab File: VX017047.D
 Acq: 30 Jun 2020 16:02

Tgt Ion	Resp	Lower	Upper
130	2587		
95	79.3	0.0	185.0

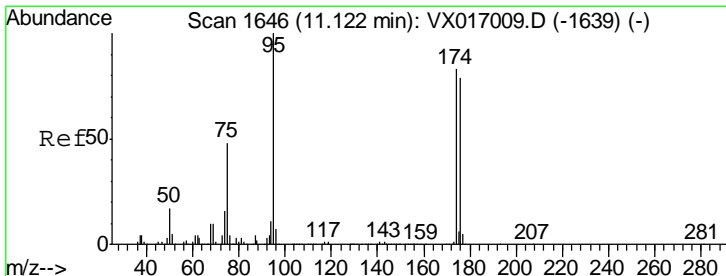
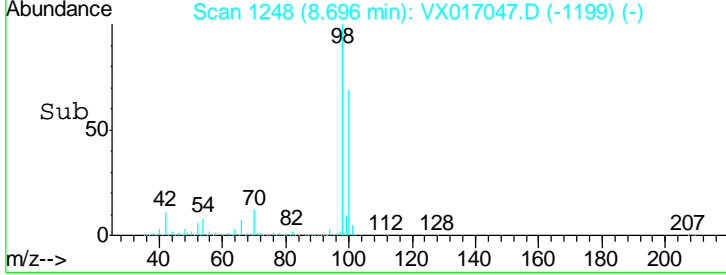
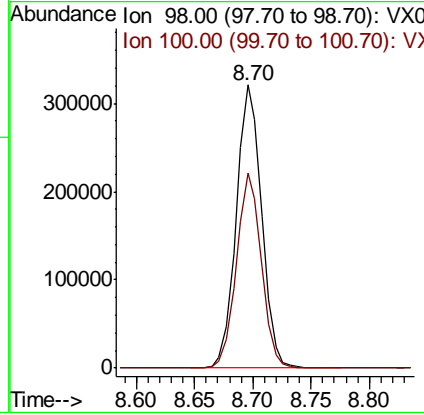
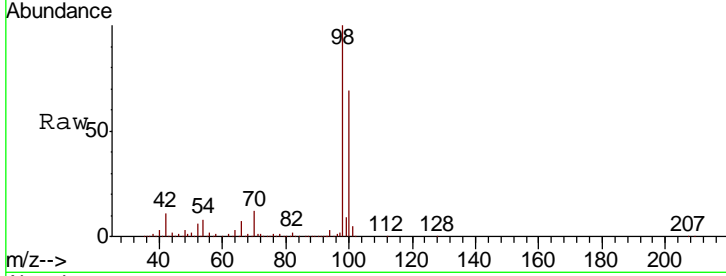




#50
 Toluene-d8
 Concen: 51.583 ug/l
 RT: 8.70 min Scan# 1248
 Delta R.T. -0.00 min
 Lab File: VX017047.D
 Acq: 30 Jun 2020 16:02

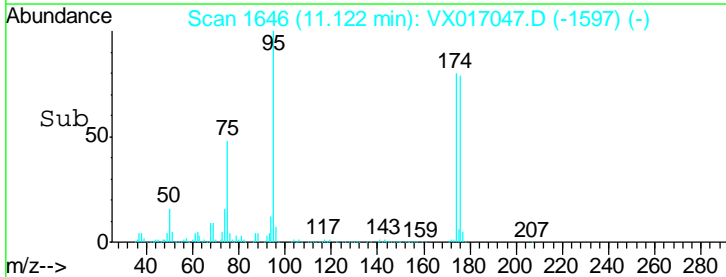
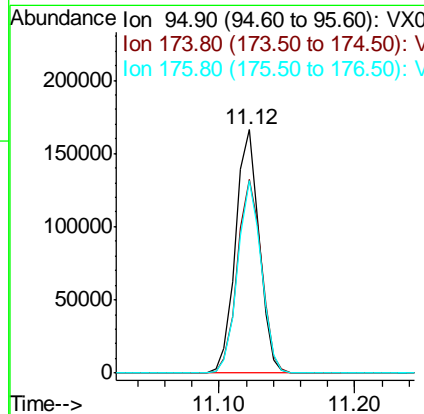
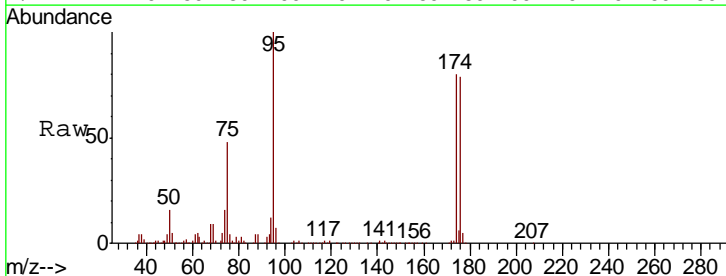
Instrument : MSVOA_X
 ClientSampled : 12BR-20200626

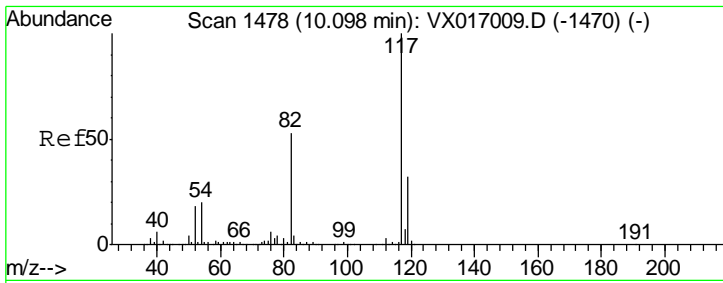
Tgt Ion	Resp	Lower	Upper
98	488275		
100	67.3	53.8	80.6



#62
 4-Bromofluorobenzene
 Concen: 54.379 ug/l
 RT: 11.12 min Scan# 1646
 Delta R.T. -0.00 min
 Lab File: VX017047.D
 Acq: 30 Jun 2020 16:02

Tgt Ion	Resp	Lower	Upper
95	201221		
174	81.5	0.0	164.0
176	79.0	0.0	157.6

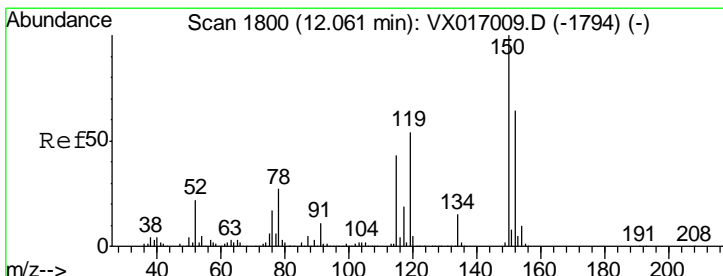
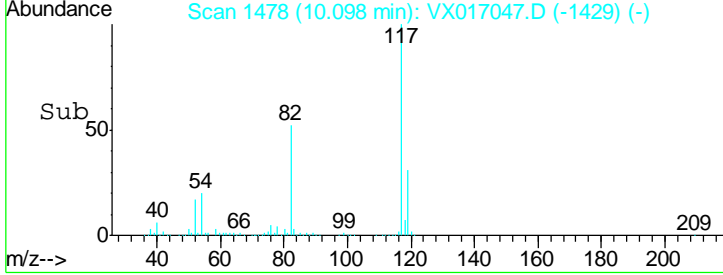
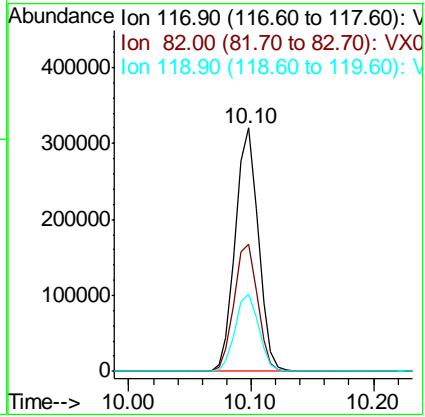
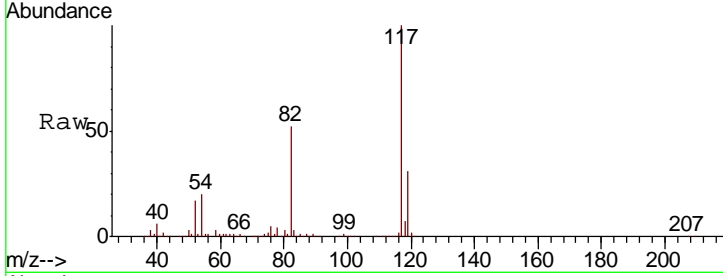




#63
 Chlorobenzene-d5
 Concen: 50.000 ug/l
 RT: 10.10 min Scan# 1478
 Delta R.T. -0.00 min
 Lab File: VX017047.D
 Acq: 30 Jun 2020 16:02

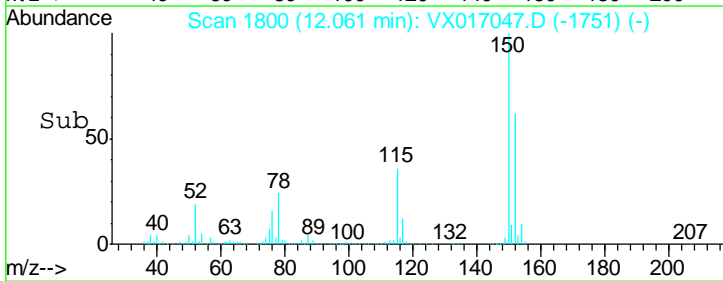
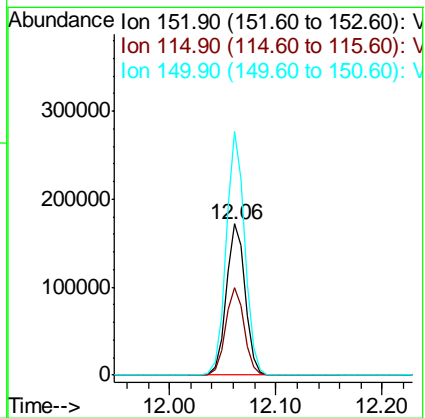
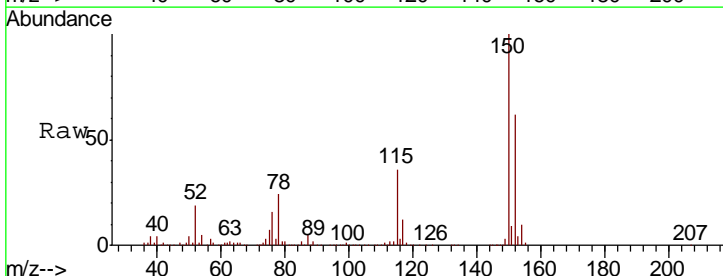
Instrument :
 MSVOA_X
 ClientSampled :
 12BR-20200626

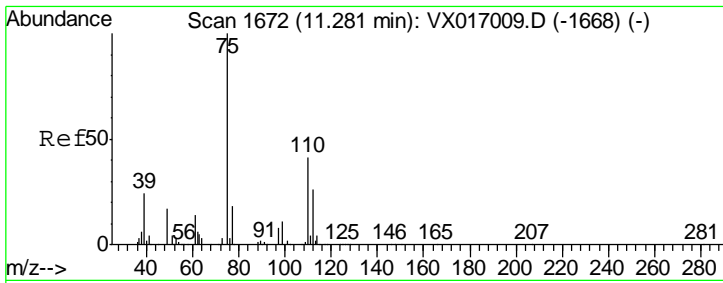
Tgt Ion	Resp	Lower	Upper
117	416078		
82	52.5	42.6	63.8
119	31.5	25.4	38.2



#72
 1,4-Dichlorobenzene-d4
 Concen: 50.000 ug/l
 RT: 12.06 min Scan# 1800
 Delta R.T. -0.00 min
 Lab File: VX017047.D
 Acq: 30 Jun 2020 16:02

Tgt Ion	Resp	Lower	Upper
152	212418		
115	57.1	40.9	122.7
150	157.9	0.0	351.6

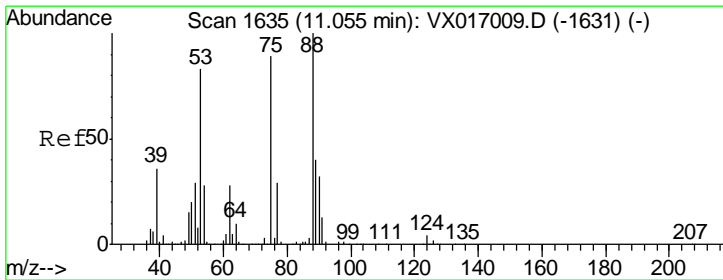
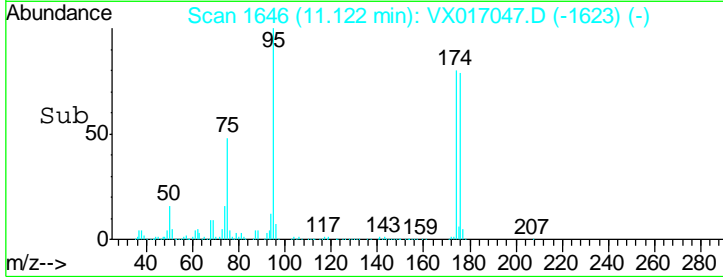
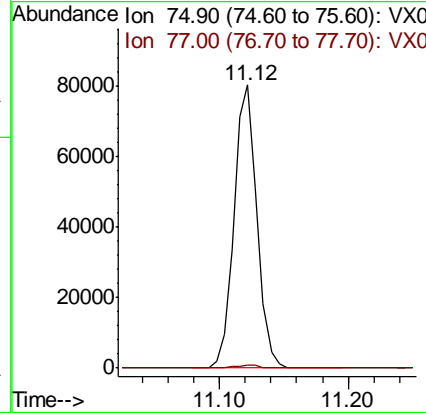
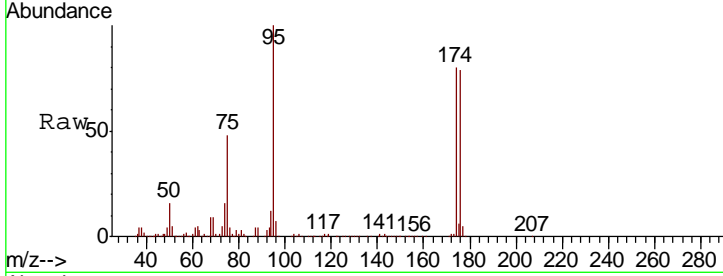




#76
 1,2,3-Trichloropropane
 Concen: 23.879 ug/l
 RT: 11.12 min Scan# 1646
 Delta R.T. -0.16 min
 Lab File: VX017047.D
 Acq: 30 Jun 2020 16:02

Instrument :
 MSVOA_X
 ClientSampled :
 12BR-20200626

Tgt Ion: 75 Resp: 99746
 Ion Ratio Lower Upper
 75 100
 77 1.3 20.2 60.6#



#81
 trans-1,4-Dichloro-2-butene
 Concen: 61.839 ug/l
 RT: 11.12 min Scan# 1646
 Delta R.T. 0.07 min
 Lab File: VX017047.D
 Acq: 30 Jun 2020 16:02

Tgt Ion: 75 Resp: 99746
 Ion Ratio Lower Upper
 75 100
 53 0.3 72.4 108.6#
 89 0.0 37.0 55.4#

