

Data Path : Z:\VOASRV\HPCHEM1\MSVOA X\DATA\VX063020\  
 Data File : VX017048.D  
 Acq On : 30 Jun 2020 16:25  
 Operator : JC/SP  
 Sample : L3123-07  
 Misc : 5.0mL/MSVOA X/WATER  
 ALS Vial : 18 Sample Multiplier: 1

Instrument :  
 MSVOA\_X  
 ClientSampled :  
 TRIP-BLANK

Quant Time: Jul 01 08:07:36 2020  
 Quant Method : Z:\VOASRV\HPCHEM1\MSVOA\_X\METHOD\82X062920W.M  
 Quant Title : SW846 8260  
 QLast Update : Mon Jun 29 17:10:38 2020  
 Response via : Initial Calibration

Internal Standards	R.T.	QIon	Response	Conc	Units	Dev(Min)
1) Pentafluorobenzene	5.63	168	229870	50.00	ug/l	0.00
34) 1,4-Difluorobenzene	6.83	114	398353	50.00	ug/l	0.00
63) Chlorobenzene-d5	10.10	117	405720	50.00	ug/l	0.00
72) 1,4-Dichlorobenzene-d4	12.06	152	218546	50.00	ug/l	0.00

System Monitoring Compounds

33) 1,2-Dichloroethane-d4	6.03	65	153273	54.09	ug/l	0.00
Spiked Amount				50.000		
			Recovery	=	108.18%	
35) Dibromofluoromethane	5.47	113	130509	51.79	ug/l	0.00
Spiked Amount				50.000		
			Recovery	=	103.58%	
50) Toluene-d8	8.70	98	482560	51.79	ug/l	0.00
Spiked Amount				50.000		
			Recovery	=	103.58%	
62) 4-Bromofluorobenzene	11.12	95	200016	54.91	ug/l	0.00
Spiked Amount				50.000		
			Recovery	=	109.82%	

Target Compounds

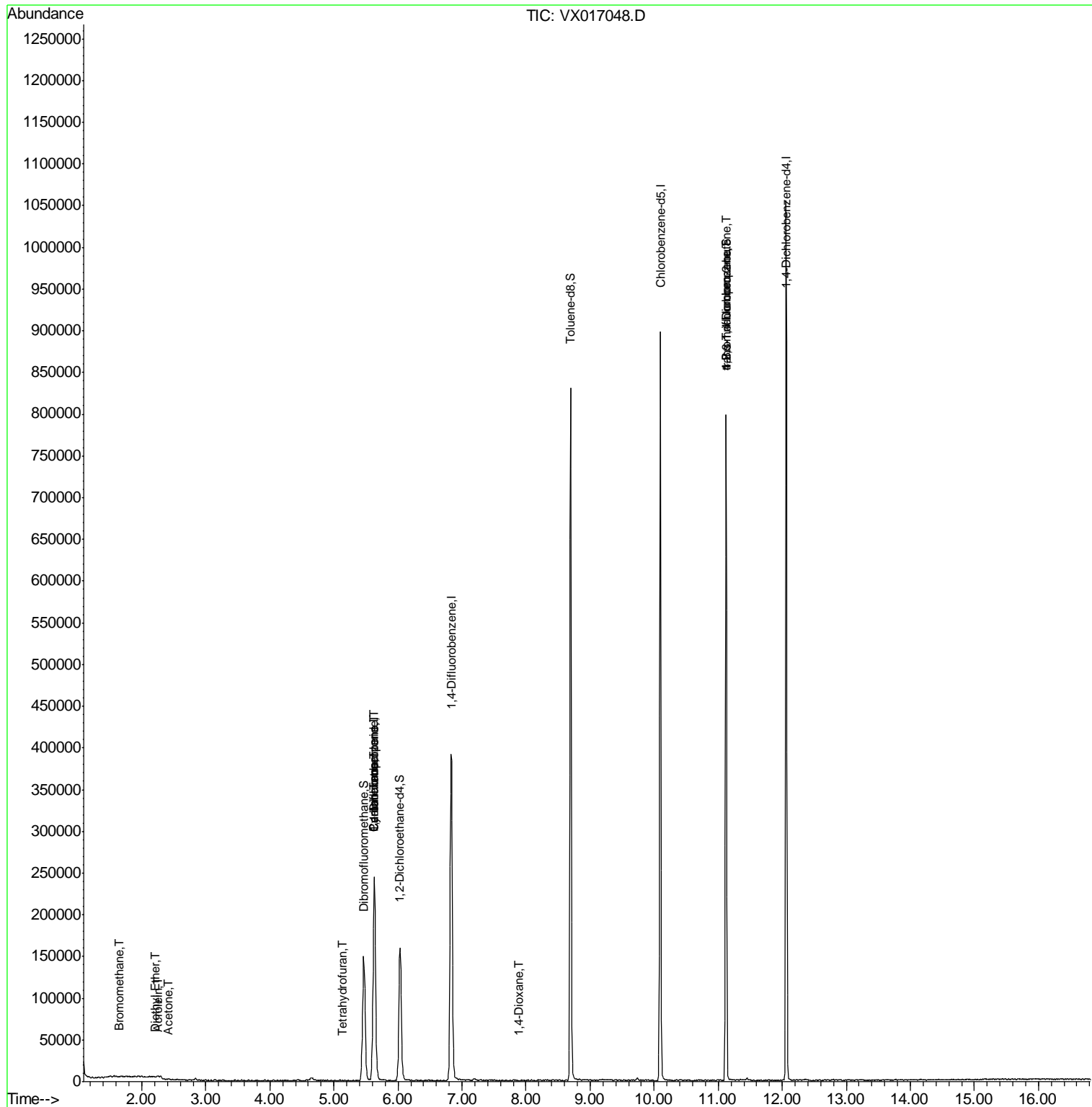
						Qvalue
5) Bromomethane	1.64	94	266	0.202	ug/l #	23
8) Diethyl Ether	2.20	74	70	0.421	ug/l	71
13) Acrolein	2.25	56	183	0.566	ug/l #	15
16) Acetone	2.42	43	533	0.503	ug/l #	82
20) Methylene Chloride	2.84	84	986	Below Cal	#	74
29) Tetrahydrofuran	5.13	42	264	0.226	ug/l #	41
31) Cyclohexane	5.62	56	4568	1.194	ug/l #	4
36) 1,1-Dichloropropene	5.64	75	17254	4.583	ug/l #	50
38) Carbon Tetrachloride	5.64	117	22201	5.354	ug/l #	16
44) Trichloroethene	7.19	130	632	Below Cal		81
49) 1,4-Dioxane	7.88	88	19	0.278	ug/l #	1
76) 1,2,3-Trichloropropane	11.12	75	97488	22.684	ug/l #	37
81) trans-1,4-Dichloro-2-buten	11.12	75	97488	58.744	ug/l #	13
88) 1,4-Dichlorobenzene	12.08	146	566	Below Cal	#	1

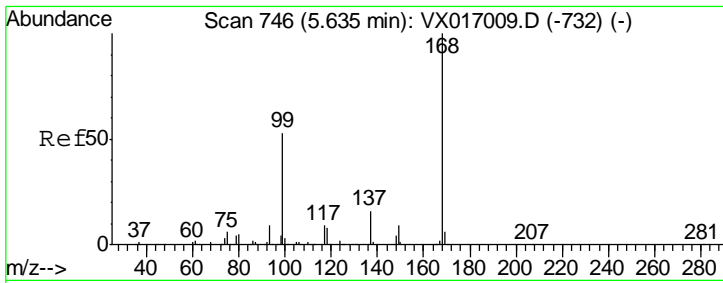
(#) = qualifier out of range (m) = manual integration (+) = signals summed

Data Path : Z:\VOASRV\HPCHEM1\MSVOA X\DATA\VX063020\  
 Data File : VX017048.D  
 Acq On : 30 Jun 2020 16:25  
 Operator : JC/SP  
 Sample : L3123-07  
 Misc : 5.0mL/MSVOA X/WATER  
 ALS Vial : 18 Sample Multiplier: 1

Instrument :  
 MSVOA\_X  
 Client Sampled :  
 TRIP-BLANK

Quant Time: Jul 01 08:07:36 2020  
 Quant Method : Z:\VOASRV\HPCHEM1\MSVOA\_X\METHOD\82X062920W.M  
 Quant Title : SW846 8260  
 QLast Update : Mon Jun 29 17:10:38 2020  
 Response via : Initial Calibration

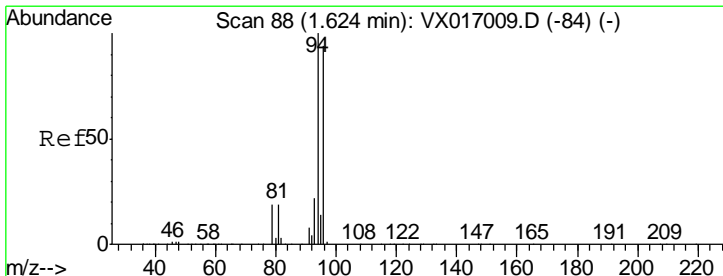
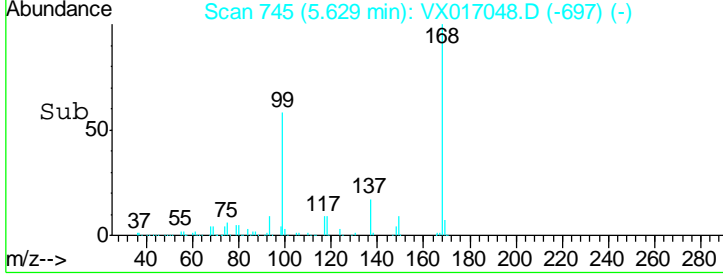
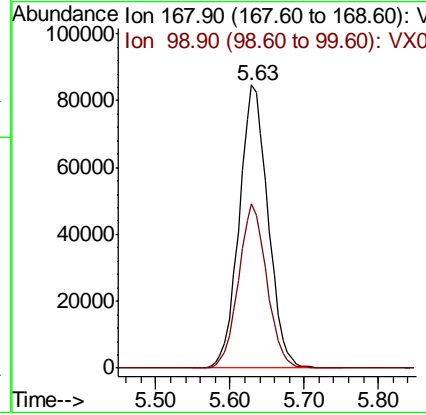
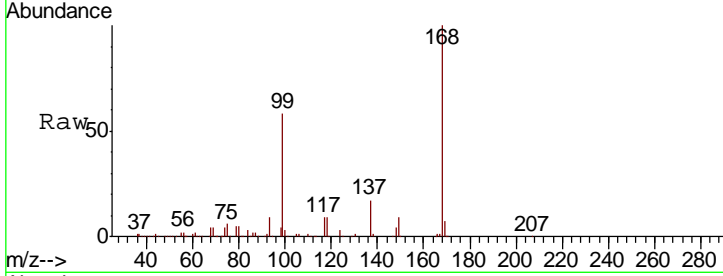




#1  
 Pentafluorobenzene  
 Concen: 50.000 ug/l  
 RT: 5.63 min Scan# 745  
 Delta R.T. -0.01 min  
 Lab File: VX017048.D  
 Acq: 30 Jun 2020 16:25

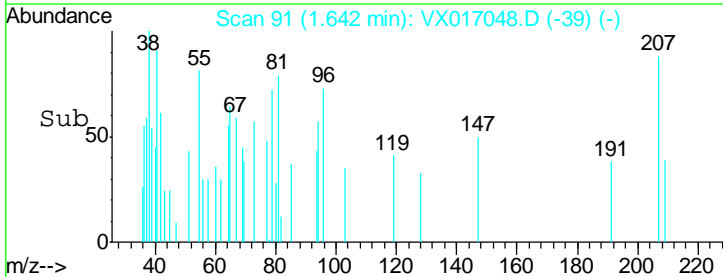
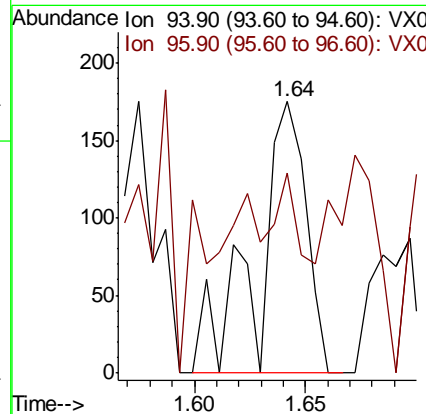
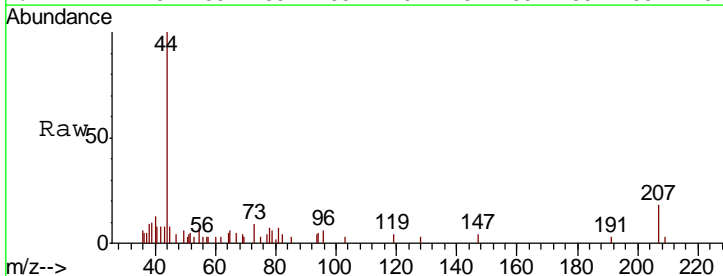
Instrument :  
 MSVOA\_X  
 ClientSampled :  
 TRIP-BLANK

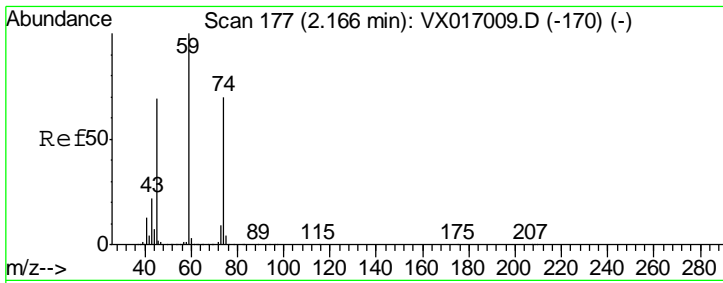
Tgt Ion: 168 Resp: 229870  
 Ion Ratio Lower Upper  
 168 100  
 99 58.0 42.6 64.0



#5  
 Bromomethane  
 Concen: 0.202 ug/l  
 RT: 1.64 min Scan# 91  
 Delta R.T. 0.02 min  
 Lab File: VX017048.D  
 Acq: 30 Jun 2020 16:25

Tgt Ion: 94 Resp: 266  
 Ion Ratio Lower Upper  
 94 100  
 96 19.4 75.0 112.4#

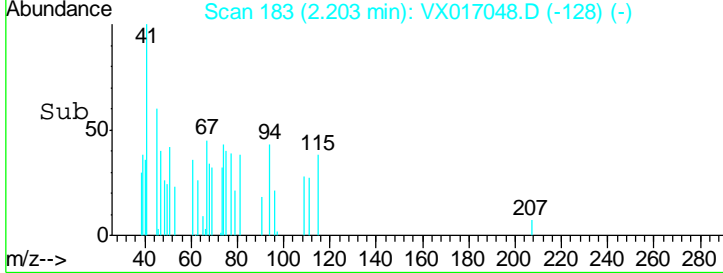
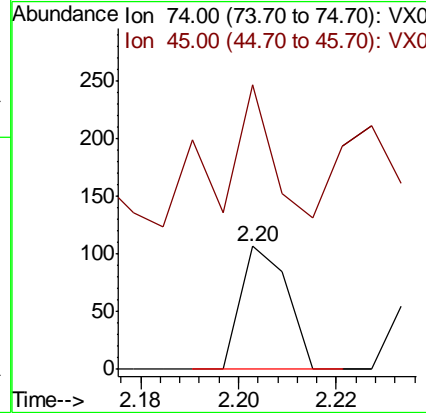
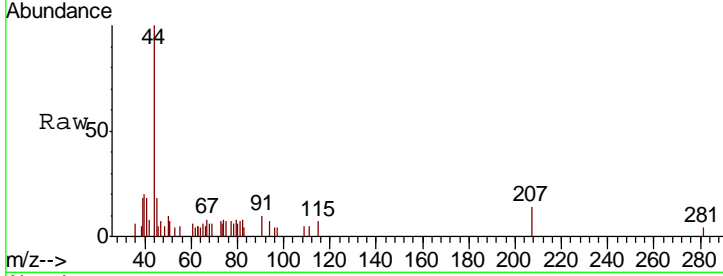




#8  
 Diethyl Ether  
 Concen: 0.421 ug/l  
 RT: 2.20 min Scan# 183  
 Delta R.T. 0.04 min  
 Lab File: VX017048.D  
 Acq: 30 Jun 2020 16:25

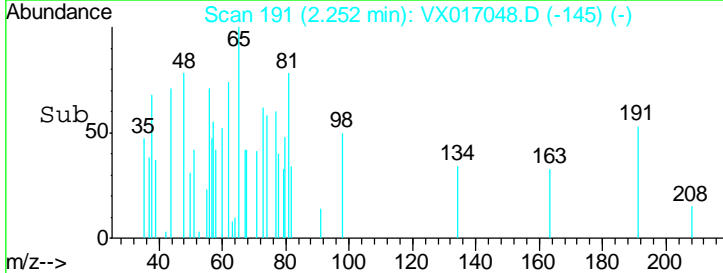
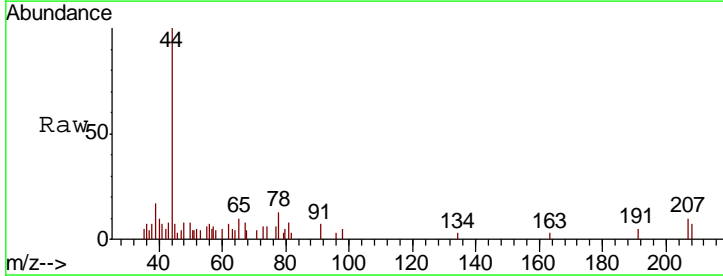
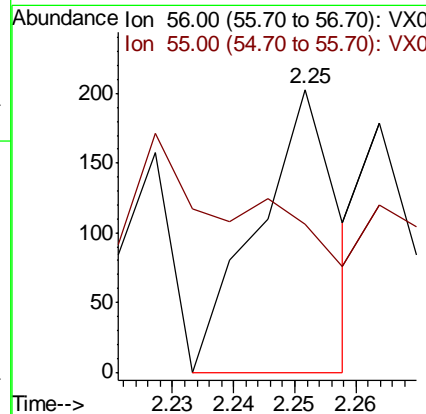
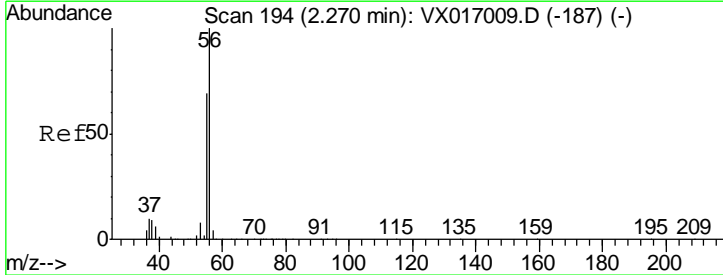
**Instrument :**  
 MSVOA\_X  
**ClientSampled :**  
 TRIP-BLANK

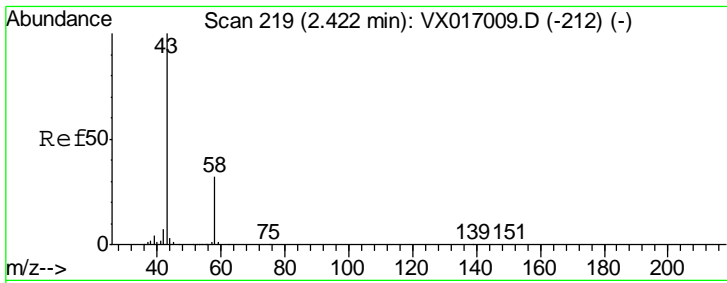
Tgt Ion: 74 Resp: 70  
 Ion Ratio Lower Upper  
 74 100  
 45 128.6 49.8 149.3



#13  
 Acrolein  
 Concen: 0.566 ug/l  
 RT: 2.25 min Scan# 191  
 Delta R.T. -0.02 min  
 Lab File: VX017048.D  
 Acq: 30 Jun 2020 16:25

Tgt Ion: 56 Resp: 183  
 Ion Ratio Lower Upper  
 56 100  
 55 0.0 55.7 83.5#

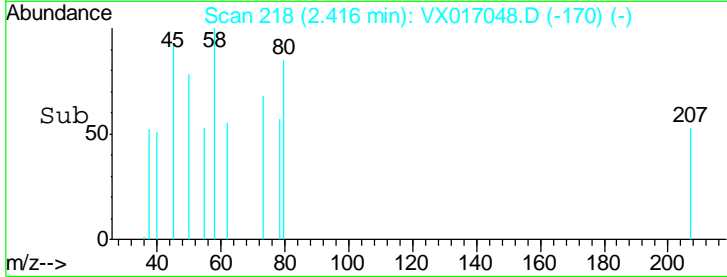
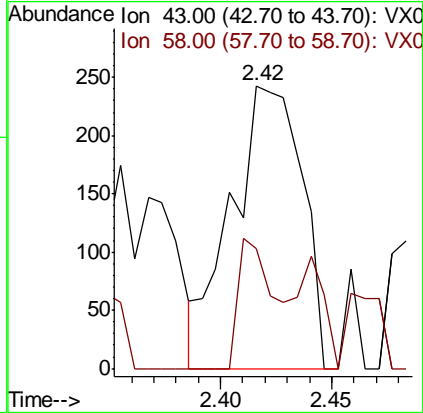
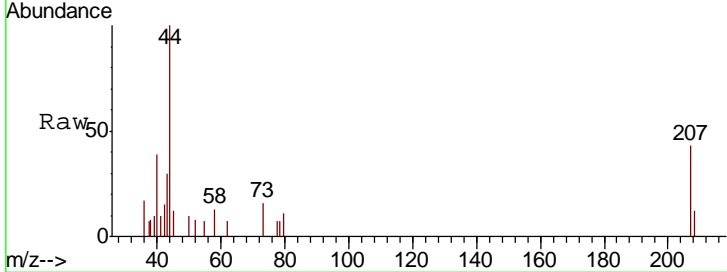




#16  
 Acetone  
 Concen: 0.503 ug/l  
 RT: 2.42 min Scan# 218  
 Delta R.T. -0.01 min  
 Lab File: VX017048.D  
 Acq: 30 Jun 2020 16:25

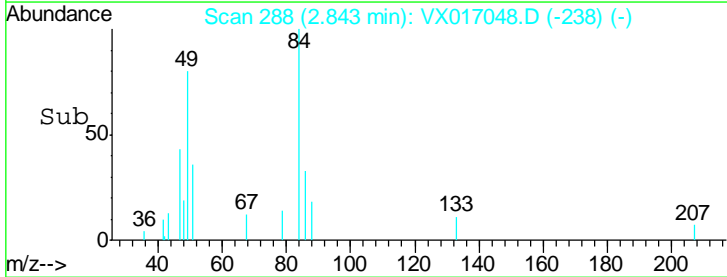
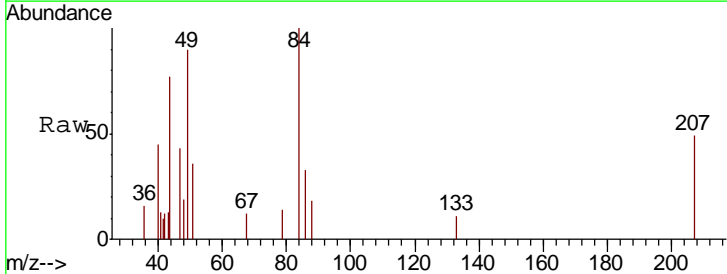
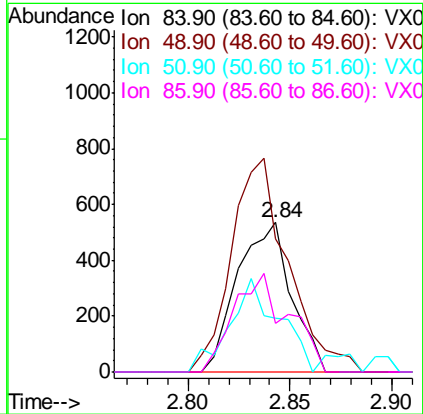
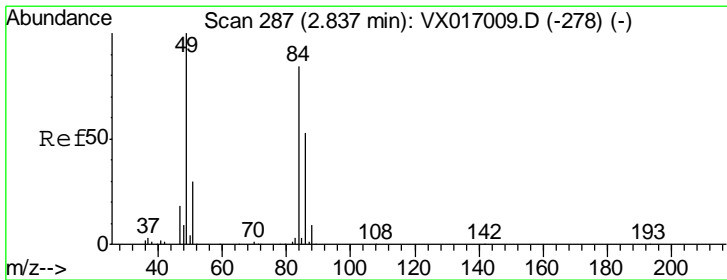
**Instrument :**  
 MSVOA\_X  
**ClientSampled :**  
 TRIP-BLANK

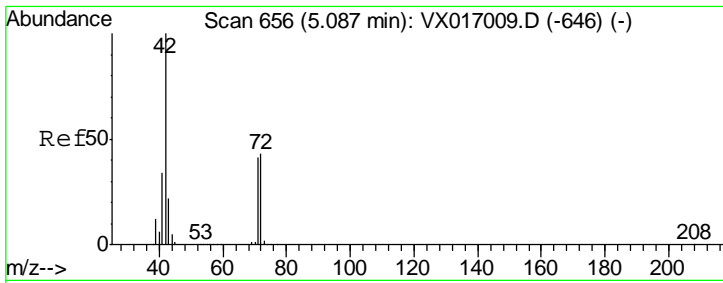
Tgt Ion	Resp	Lower	Upper
43	100		
58	42.4	25.7	38.5#



#20  
 Methylene Chloride  
 Concen: Below Cal  
 RT: 2.84 min Scan# 288  
 Delta R.T. 0.01 min  
 Lab File: VX017048.D  
 Acq: 30 Jun 2020 16:25

Tgt Ion	Resp	Lower	Upper
84	100		
49	89.5	94.7	142.1#
51	35.7	28.6	42.8
86	32.9	50.5	75.7#

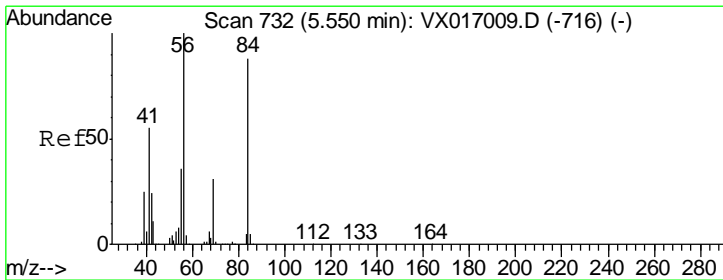
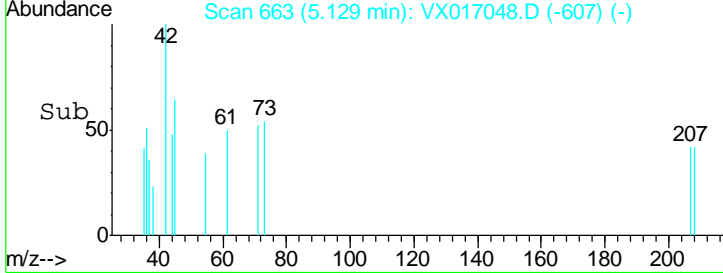
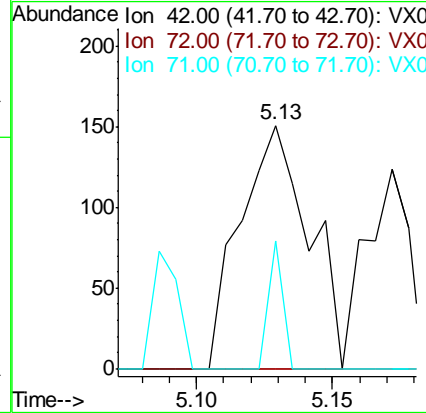
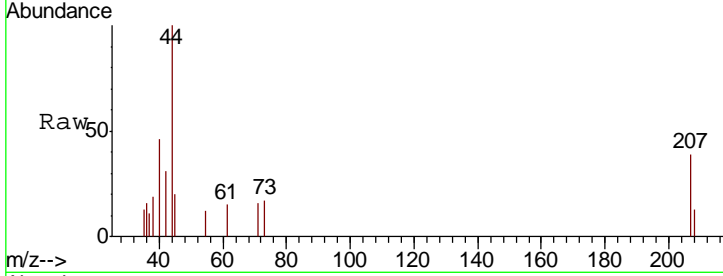




#29  
 Tetrahydrofuran  
 Concen: 0.226 ug/l  
 RT: 5.13 min Scan# 663  
 Delta R.T. 0.04 min  
 Lab File: VX017048.D  
 Acq: 30 Jun 2020 16:25

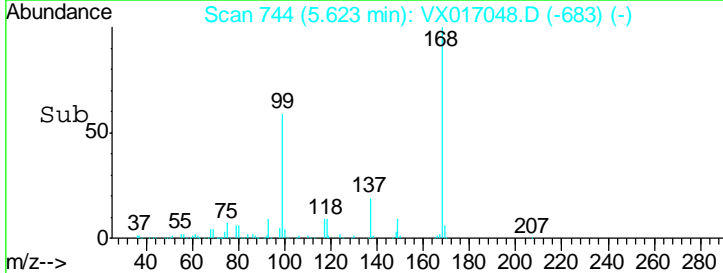
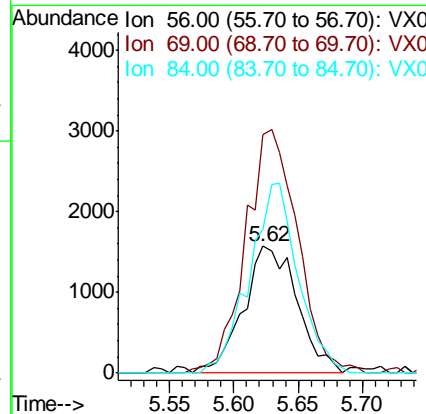
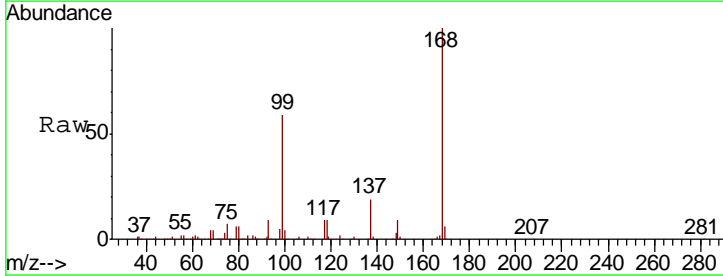
Instrument :  
 MSVOA\_X  
 ClientSampled :  
 TRIP-BLANK

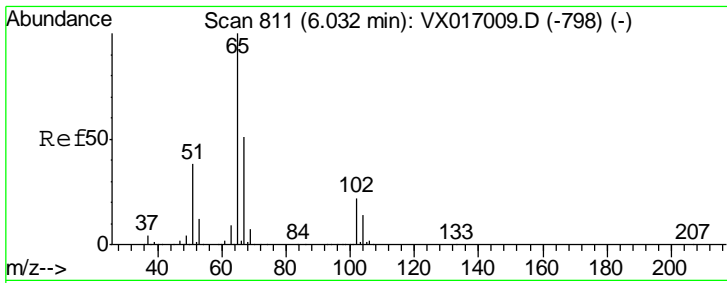
Tgt Ion	Resp	Lower	Upper
42	100		
72	0.0	35.3	52.9#
71	11.0	33.1	49.7#



#31  
 Cyclohexane  
 Concen: 1.194 ug/l  
 RT: 5.62 min Scan# 744  
 Delta R.T. 0.07 min  
 Lab File: VX017048.D  
 Acq: 30 Jun 2020 16:25

Tgt Ion	Resp	Lower	Upper
56	100		
69	185.1	25.0	37.4#
84	113.7	69.1	103.7#

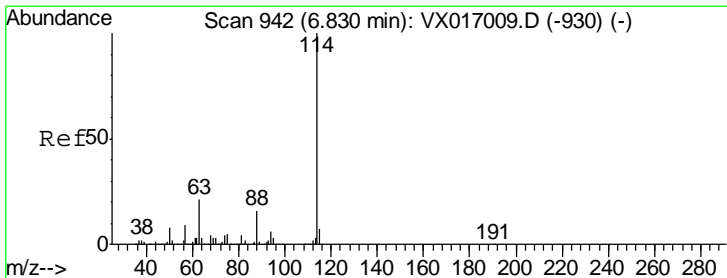
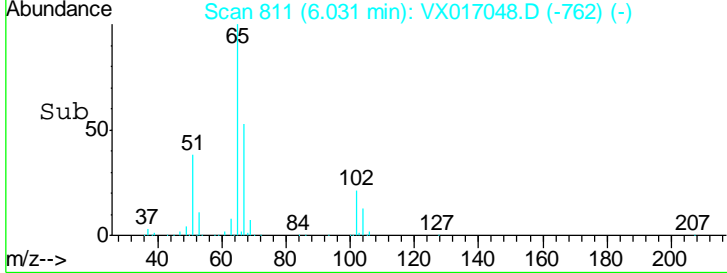
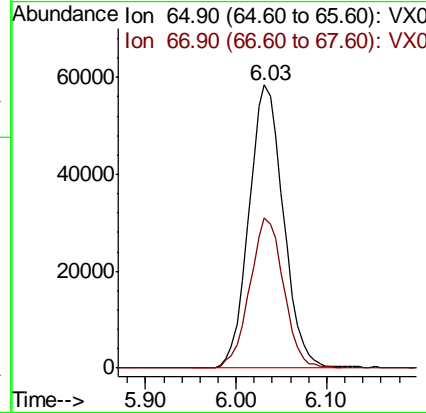
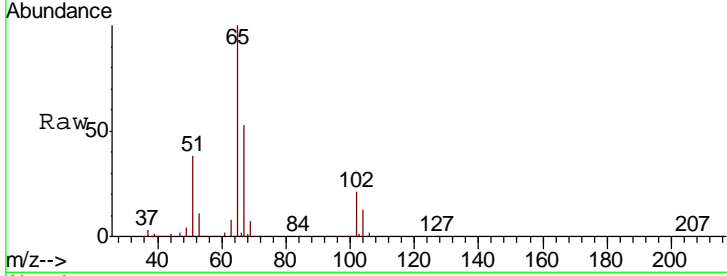




#33  
 1,2-Dichloroethane-d4  
 Concen: 54.087 ug/l  
 RT: 6.03 min Scan# 811  
 Delta R.T. -0.00 min  
 Lab File: VX017048.D  
 Acq: 30 Jun 2020 16:25

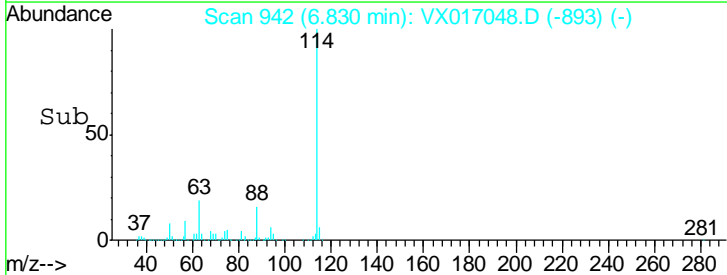
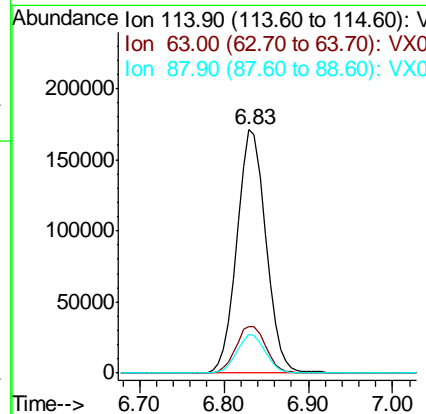
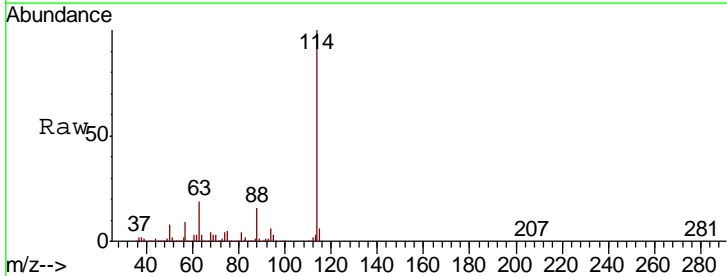
**Instrument :**  
 MSVOA\_X  
**ClientSampled :**  
 TRIP-BLANK

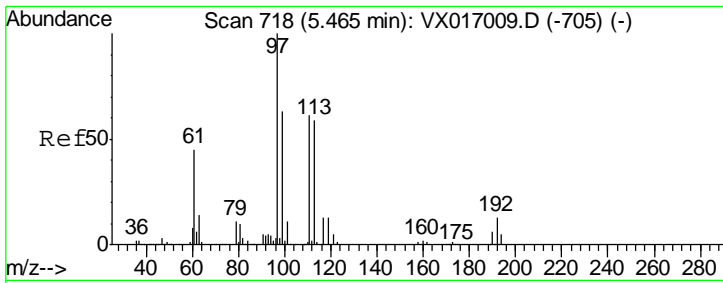
Tgt Ion	Resp	Lower	Upper
65	153273		
67	52.2	0.0	103.8



#34  
 1,4-Difluorobenzene  
 Concen: 50.000 ug/l  
 RT: 6.83 min Scan# 942  
 Delta R.T. -0.00 min  
 Lab File: VX017048.D  
 Acq: 30 Jun 2020 16:25

Tgt Ion	Resp	Lower	Upper
114	398353		
63	19.2	0.0	41.4
88	15.8	0.0	32.4

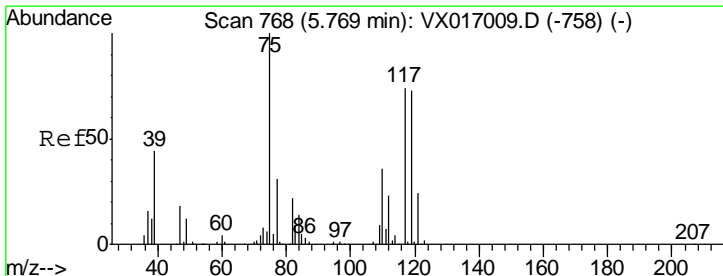
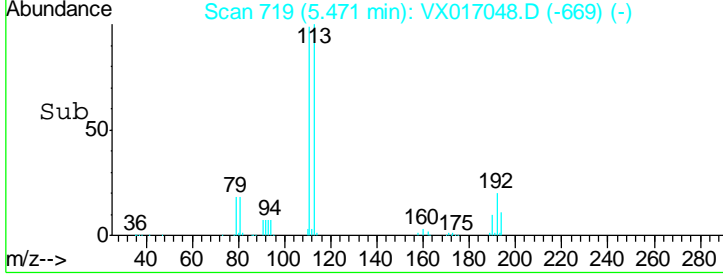
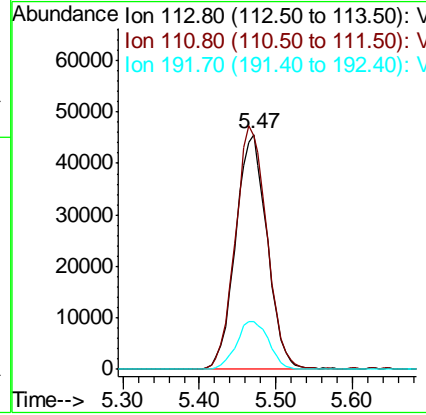
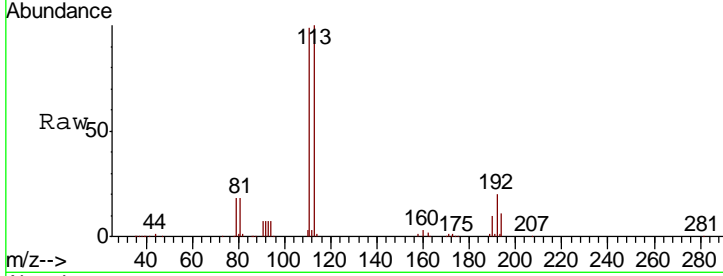




#35  
 Dibromofluoromethane  
 Concen: 51.792 ug/l  
 RT: 5.47 min Scan# 719  
 Delta R.T. 0.01 min  
 Lab File: VX017048.D  
 Acq: 30 Jun 2020 16:25

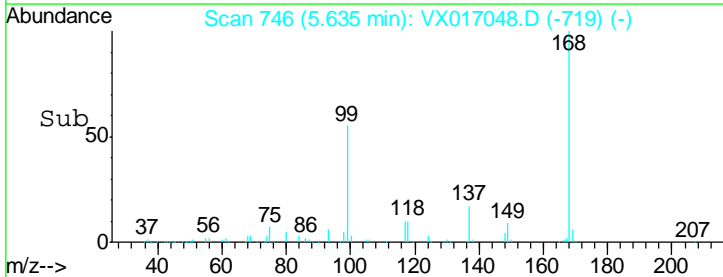
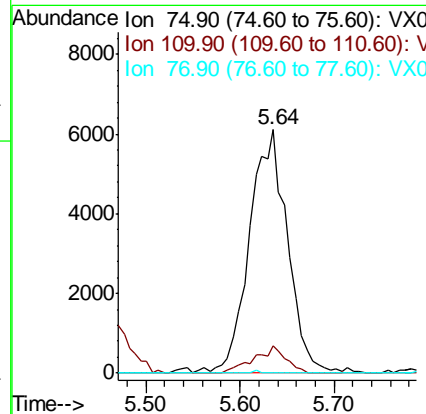
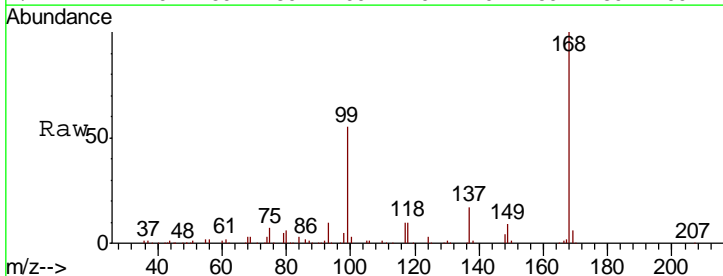
**Instrument :**  
 MSVOA\_X  
**ClientSampled :**  
 TRIP-BLANK

Tgt Ion	Resp	Lower	Upper
113	130509		
111	103.6	81.9	122.9
192	21.0	16.7	25.1

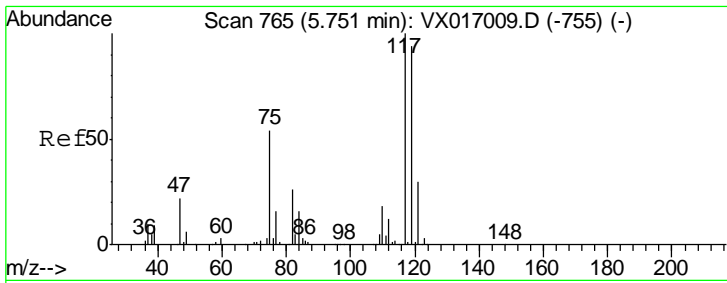


#36  
 1,1-Dichloropropene  
 Concen: 4.583 ug/l  
 RT: 5.64 min Scan# 746  
 Delta R.T. -0.13 min  
 Lab File: VX017048.D  
 Acq: 30 Jun 2020 16:25

Tgt Ion	Resp	Lower	Upper
75	17254		
110	9.4	18.1	54.1#
77	0.2	24.6	37.0#



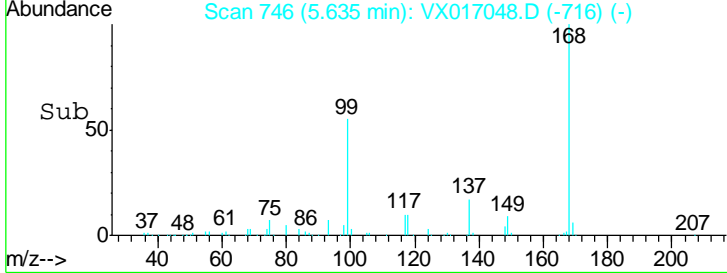
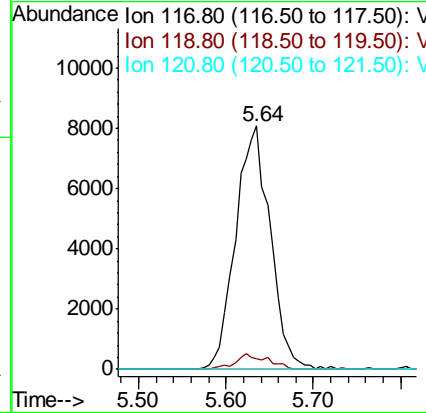
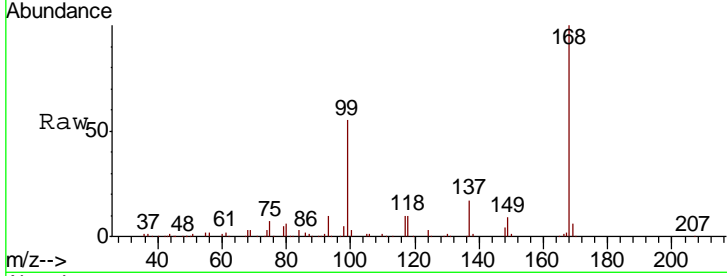




#38  
 Carbon Tetrachloride  
 Concen: 5.354 ug/l  
 RT: 5.64 min Scan# 746  
 Delta R.T. -0.12 min  
 Lab File: VX017048.D  
 Acq: 30 Jun 2020 16:25

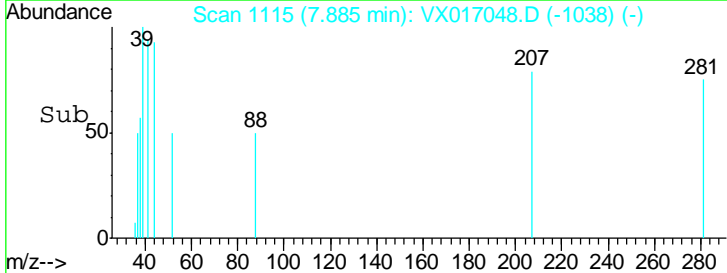
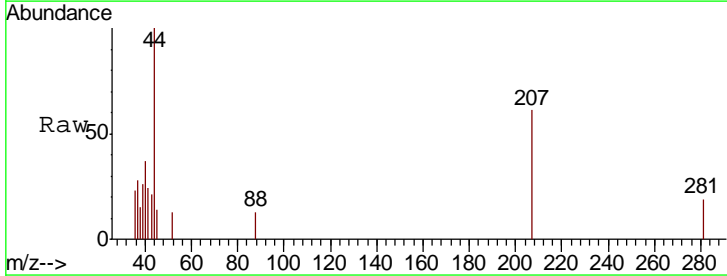
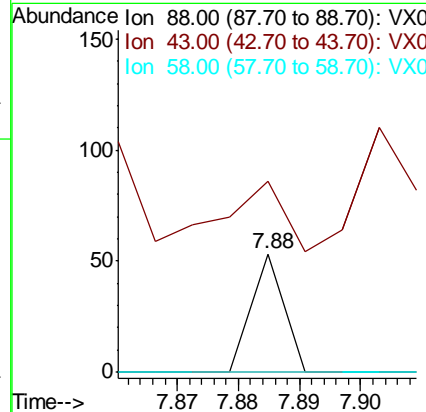
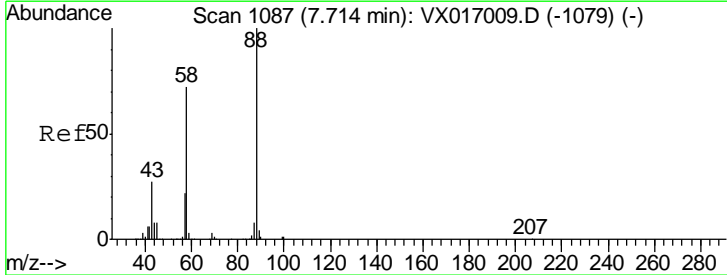
**Instrument :**  
 MSVOA\_X  
**ClientSampled :**  
 TRIP-BLANK

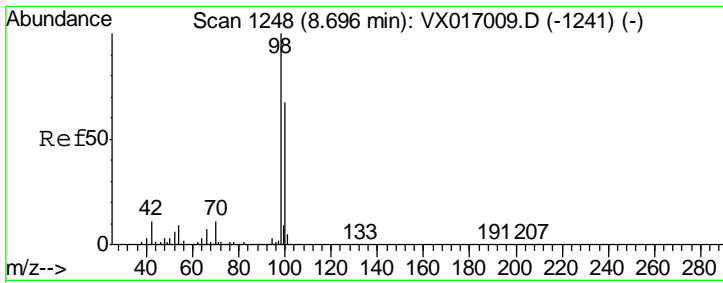
Tgt Ion	Resp	Lower	Upper
117	22201		
119	4.1	75.4	113.0#
121	0.0	23.8	35.6#



#49  
 1,4-Dioxane  
 Concen: 0.278 ug/l  
 RT: 7.88 min Scan# 1115  
 Delta R.T. 0.17 min  
 Lab File: VX017048.D  
 Acq: 30 Jun 2020 16:25

Tgt Ion	Resp	Lower	Upper
88	19		
43	178.9	25.8	38.8#
58	0.0	54.8	82.2#

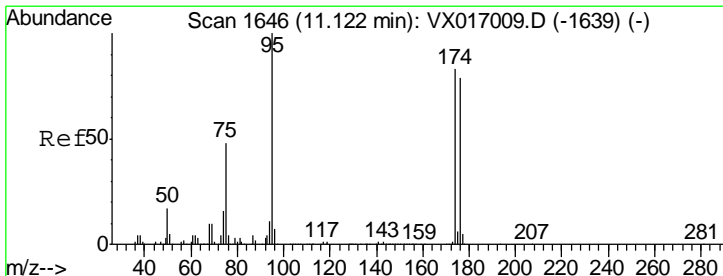
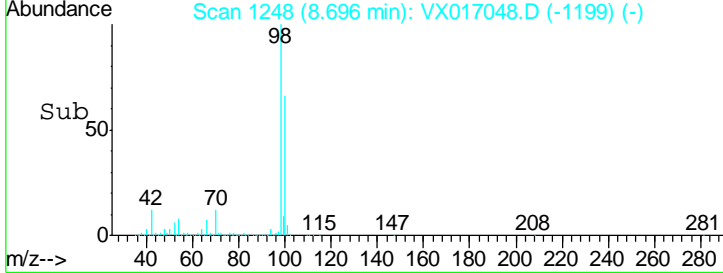
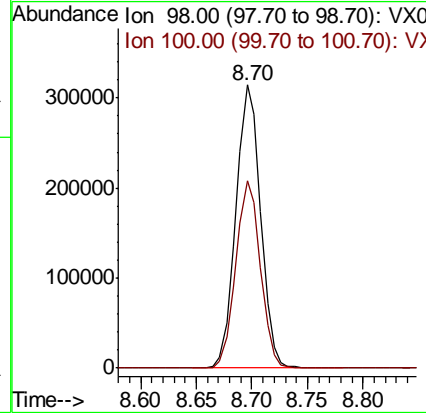
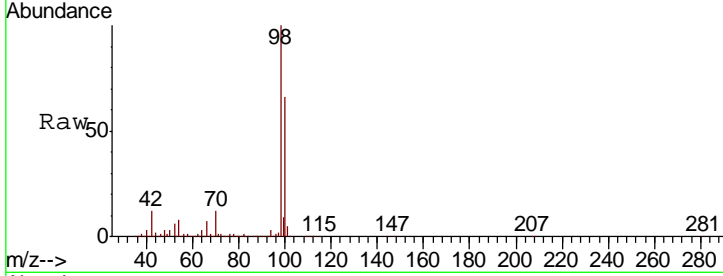




#50  
 Toluene-d8  
 Concen: 51.788 ug/l  
 RT: 8.70 min Scan# 1248  
 Delta R.T. -0.00 min  
 Lab File: VX017048.D  
 Acq: 30 Jun 2020 16:25

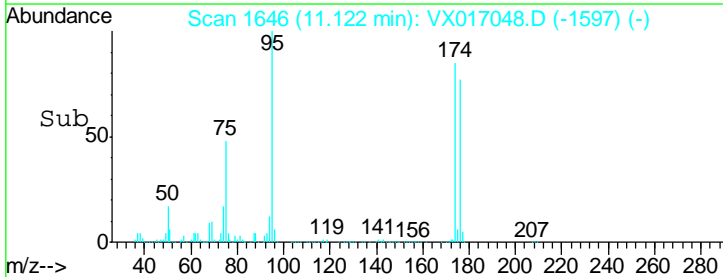
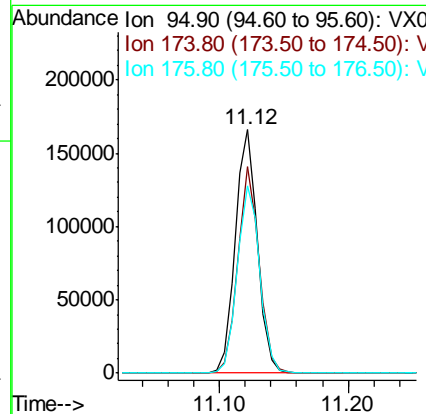
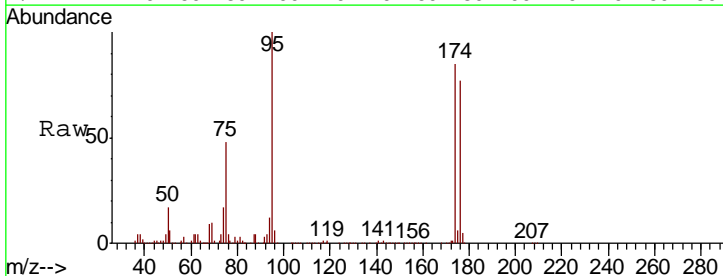
**Instrument :**  
 MSVOA\_X  
**ClientSampled :**  
 TRIP-BLANK

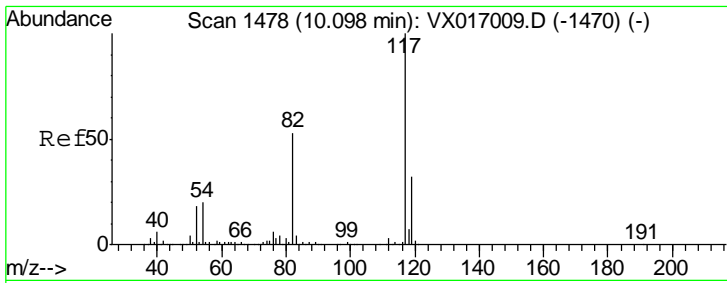
Tgt Ion	Resp	Lower	Upper
98	482560		
100	66.1	53.8	80.6



#62  
 4-Bromofluorobenzene  
 Concen: 54.912 ug/l  
 RT: 11.12 min Scan# 1646  
 Delta R.T. -0.00 min  
 Lab File: VX017048.D  
 Acq: 30 Jun 2020 16:25

Tgt Ion	Resp	Lower	Upper
95	200016		
174	81.6	0.0	164.0
176	78.3	0.0	157.6

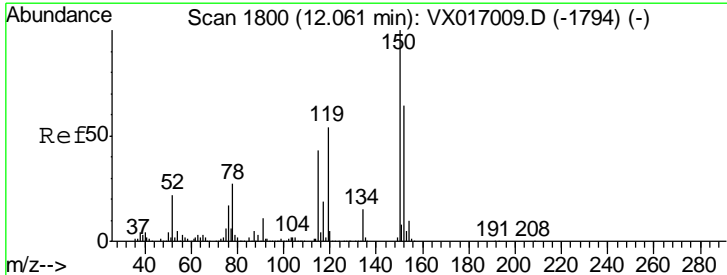
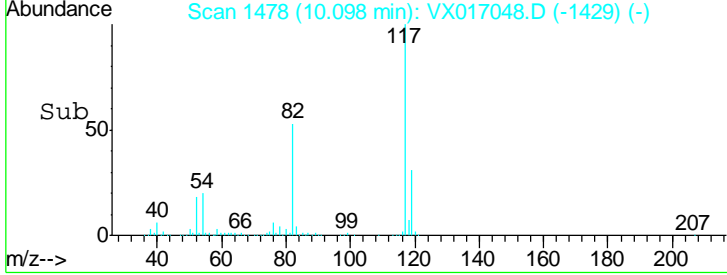
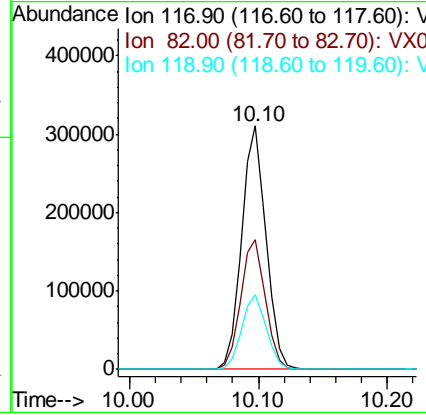
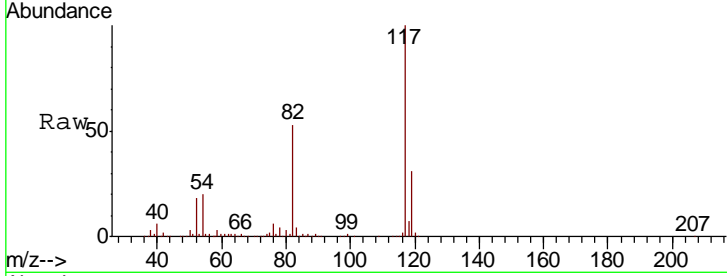




#63  
 Chlorobenzene-d5  
 Concen: 50.000 ug/l  
 RT: 10.10 min Scan# 1478  
 Delta R.T. -0.00 min  
 Lab File: VX017048.D  
 Acq: 30 Jun 2020 16:25

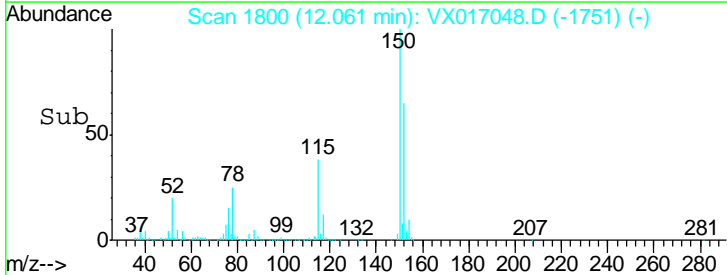
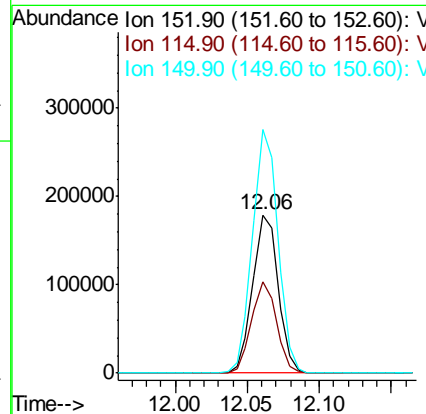
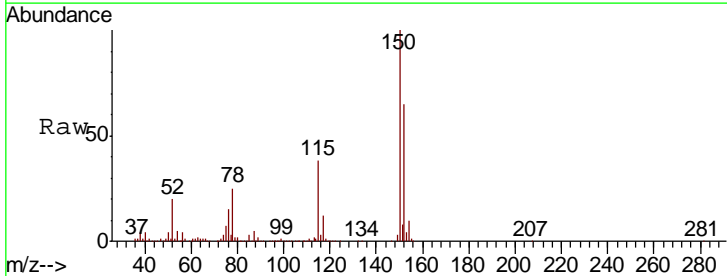
Instrument :  
 MSVOA\_X  
 ClientSampled :  
 TRIP-BLANK

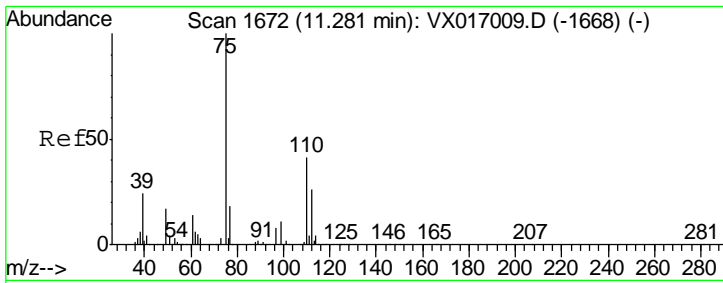
Tgt Ion	Resp	Lower	Upper
117	100		
82	53.3	42.6	63.8
119	30.9	25.4	38.2



#72  
 1,4-Dichlorobenzene-d4  
 Concen: 50.000 ug/l  
 RT: 12.06 min Scan# 1800  
 Delta R.T. -0.00 min  
 Lab File: VX017048.D  
 Acq: 30 Jun 2020 16:25

Tgt Ion	Resp	Lower	Upper
152	100		
115	56.7	40.9	122.7
150	153.9	0.0	351.6

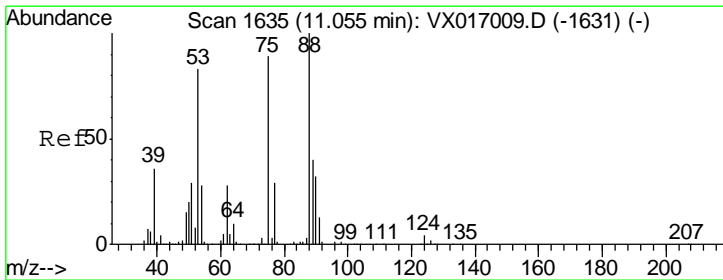
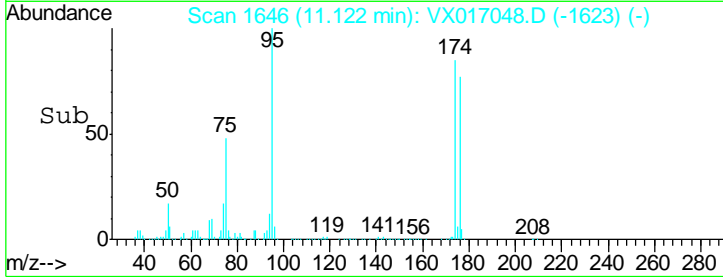
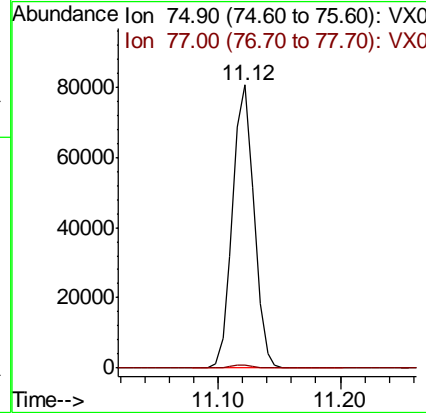
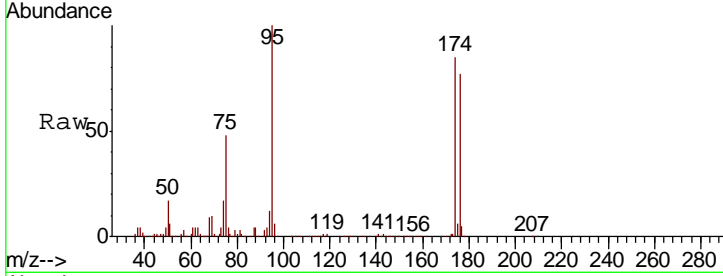




#76  
 1,2,3-Trichloropropane  
 Concen: 22.684 ug/l  
 RT: 11.12 min Scan# 1646  
 Delta R.T. -0.16 min  
 Lab File: VX017048.D  
 Acq: 30 Jun 2020 16:25

Instrument :  
 MSVOA\_X  
 ClientSampled :  
 TRIP-BLANK

Tgt Ion: 75 Resp: 97488  
 Ion Ratio Lower Upper  
 75 100  
 77 1.3 20.2 60.6#



#81  
 trans-1,4-Dichloro-2-butene  
 Concen: 58.744 ug/l  
 RT: 11.12 min Scan# 1646  
 Delta R.T. 0.07 min  
 Lab File: VX017048.D  
 Acq: 30 Jun 2020 16:25

Tgt Ion: 75 Resp: 97488  
 Ion Ratio Lower Upper  
 75 100  
 53 0.2 72.4 108.6#  
 89 0.1 37.0 55.4#

