

Data Path : Z:\VOASRV\HPCHEM1\MSVOA X\DATA\VX063020\  
 Data File : VX017068.D  
 Acq On : 01 Jul 2020 01:07  
 Operator : JC/SP  
 Sample : PB129852ZHE#04  
 Misc : 5.0mL/MSVOA X/WATER  
 ALS Vial : 41 Sample Multiplier: 1

Instrument :  
 MSVOA\_X  
 Client Sampled :  
 PB129852ZHE#04

Quant Time: Jul 01 08:20:28 2020  
 Quant Method : Z:\VOASRV\HPCHEM1\MSVOA\_X\METHOD\82X062920W.M  
 Quant Title : SW846 8260  
 QLast Update : Mon Jun 29 17:10:38 2020  
 Response via : Initial Calibration

Internal Standards	R.T.	QIon	Response	Conc	Units	Dev(Min)
1) Pentafluorobenzene	5.64	168	229936	50.00	ug/l	0.00
34) 1,4-Difluorobenzene	6.84	114	399064	50.00	ug/l	0.00
63) Chlorobenzene-d5	10.10	117	430636	50.00	ug/l	0.00
72) 1,4-Dichlorobenzene-d4	12.06	152	218154	50.00	ug/l	0.00

System Monitoring Compounds	R.T.	QIon	Response	Conc	Units	Dev(Min)
33) 1,2-Dichloroethane-d4	6.03	65	150532	53.10	ug/l	0.00
Spiked Amount						
						Recovery = 106.20%
35) Dibromofluoromethane	5.47	113	132772	52.60	ug/l	0.00
Spiked Amount						
						Recovery = 105.20%
50) Toluene-d8	8.70	98	502115	53.79	ug/l	0.00
Spiked Amount						
						Recovery = 107.58%
62) 4-Bromofluorobenzene	11.12	95	211282	57.90	ug/l	0.00
Spiked Amount						
						Recovery = 115.80%

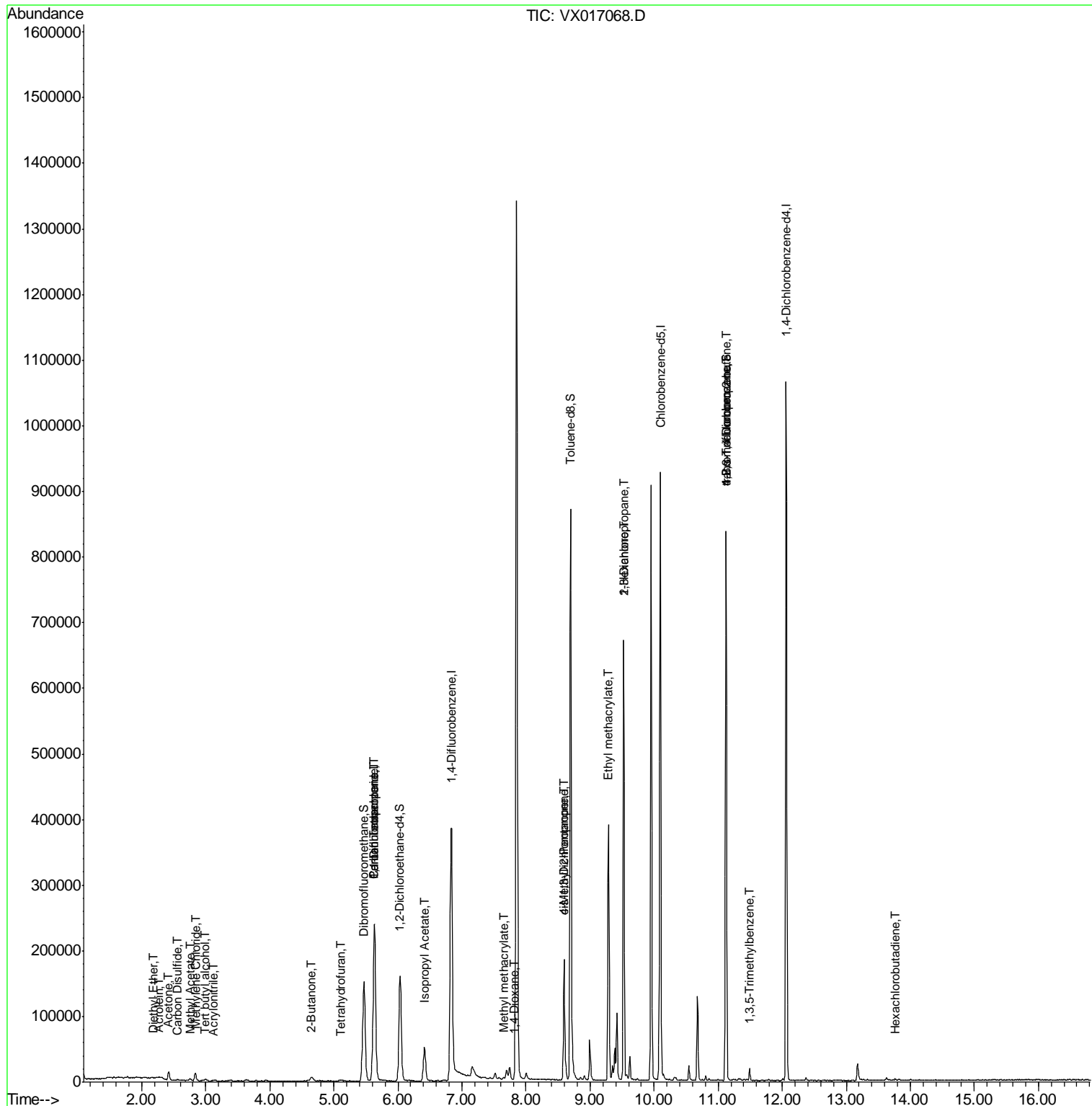
Target Compounds	R.T.	QIon	Response	Conc	Units	Qvalue
8) Diethyl Ether	2.18	74	199	0.524	ug/l	78
11) Tert butyl alcohol	3.00	59	1868	3.454	ug/l #	79
13) Acrolein	2.27	56	389	1.203	ug/l #	49
15) Acrylonitrile	3.11	53	320	0.246	ug/l	97
16) Acetone	2.42	43	13731	12.949	ug/l	94
17) Carbon Disulfide	2.56	76	1367	0.238	ug/l #	70
18) Methyl Acetate	2.75	43	3310	1.196	ug/l	98
20) Methylene Chloride	2.84	84	5460	1.486	ug/l #	91
25) 2-Butanone	4.64	43	3904	2.209	ug/l #	88
29) Tetrahydrofuran	5.11	42	1657	1.419	ug/l #	86
36) 1,1-Dichloropropene	5.63	75	17280	4.582	ug/l #	51
38) Carbon Tetrachloride	5.63	117	23396	5.632	ug/l #	18
43) Isopropyl Acetate	6.42	43	69357	10.907	ug/l	99
44) Trichloroethene	7.19	130	664	Below Cal		78
48) Methyl methacrylate	7.65	41	4073	1.348	ug/l #	15
49) 1,4-Dioxane	7.81	88	27	0.394	ug/l #	24
51) 4-Methyl-2-Pentanone	8.59	43	67568	17.825	ug/l #	46
54) cis-1,3-Dichloropropene	8.59	75	30185	6.373	ug/l #	62
56) Ethyl methacrylate	9.29	69	1468	0.365	ug/l #	1
57) 1,3-Dichloropropane	9.52	76	5252	1.098	ug/l #	46
59) 2-Hexanone	9.52	43	74598	26.947	ug/l #	49
76) 1,2,3-Trichloropropane	11.12	75	104873	24.447	ug/l #	37
80) 1,3,5-Trimethylbenzene	11.49	105	7062	0.596	ug/l	93
81) trans-1,4-Dichloro-2-buten	11.12	75	104873	63.308	ug/l #	13
88) 1,4-Dichlorobenzene	12.01	146	1065	Below Cal		82
94) Hexachlorobutadiene	13.76	225	324	1.029	ug/l #	72

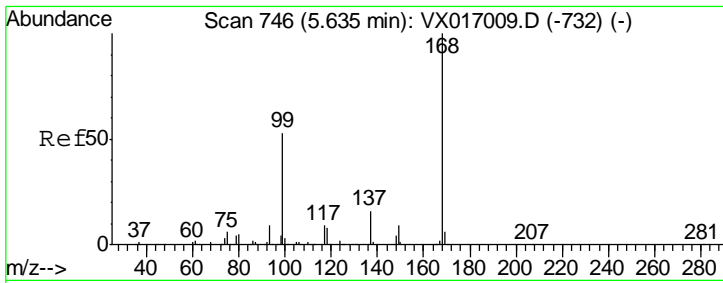
(#) = qualifier out of range (m) = manual integration (+) = signals summed

Data Path : Z:\VOASRV\HPCHEM1\MSVOA X\DATA\VX063020\  
 Data File : VX017068.D  
 Acq On : 01 Jul 2020 01:07  
 Operator : JC/SP  
 Sample : PB129852ZHE#04  
 Misc : 5.0mL/MSVOA X/WATER  
 ALS Vial : 41 Sample Multiplier: 1

Instrument :  
 MSVOA\_X  
 ClientSampleId :  
 PB129852ZHE#04

Quant Time: Jul 01 08:20:28 2020  
 Quant Method : Z:\VOASRV\HPCHEM1\MSVOA\_X\METHOD\82X062920W.M  
 Quant Title : SW846 8260  
 QLast Update : Mon Jun 29 17:10:38 2020  
 Response via : Initial Calibration

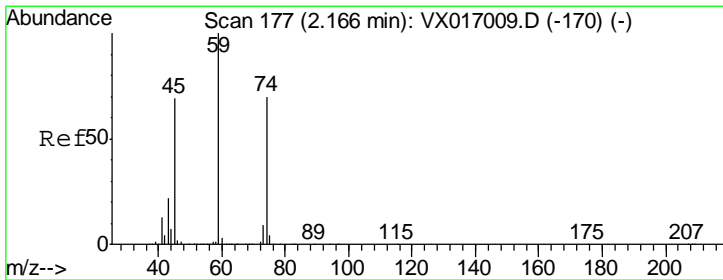
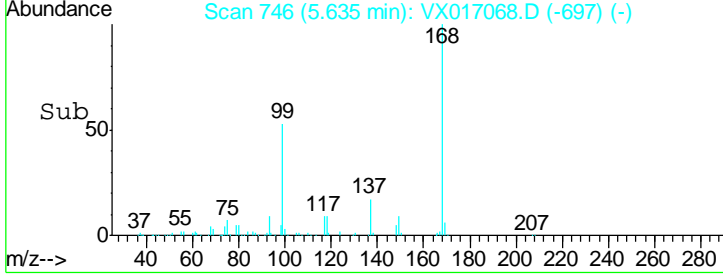
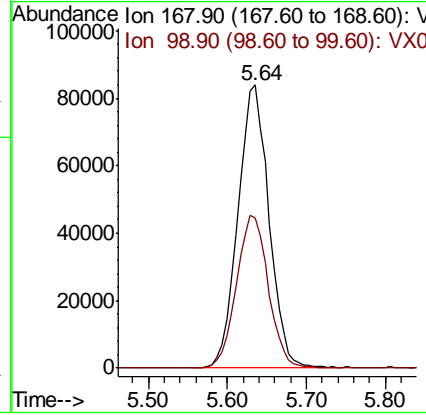
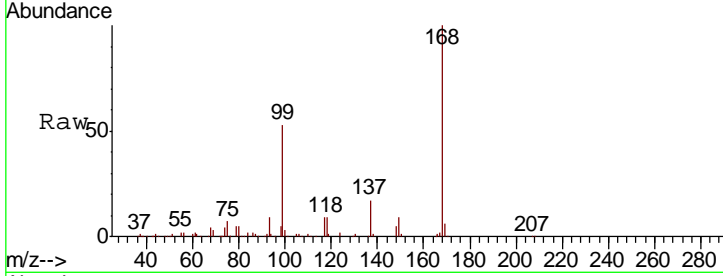




#1  
 Pentafluorobenzene  
 Concen: 50.000 ug/l  
 RT: 5.64 min Scan# 746  
 Delta R.T. -0.00 min  
 Lab File: VX017068.D  
 Acq: 01 Jul 2020 01:07

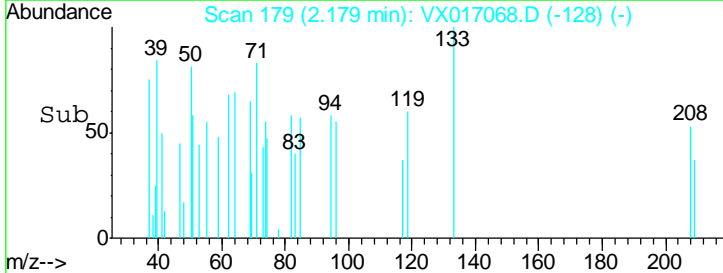
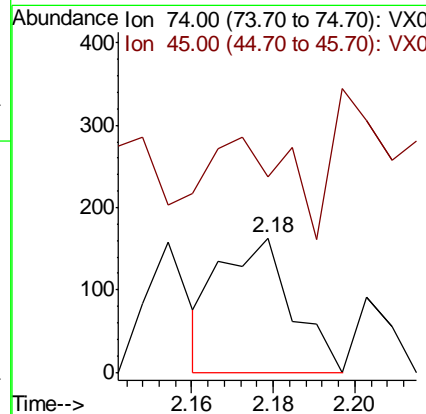
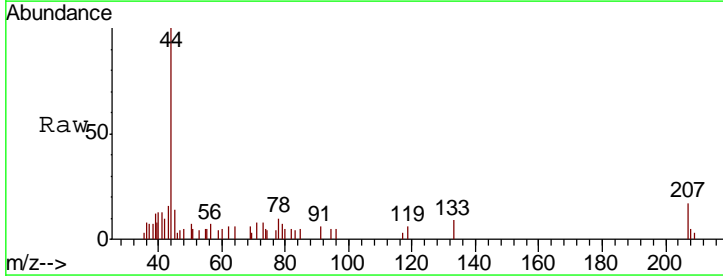
Instrument : MSVOA\_X  
 ClientSampleID : PB129852ZHE#04

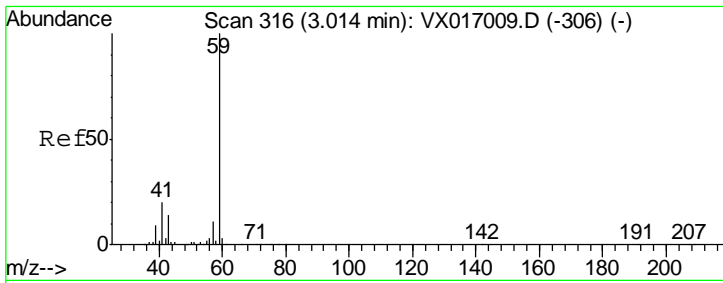
Tgt Ion	Resp	Lower	Upper
168	100		
99	53.0	42.6	64.0



#8  
 Diethyl Ether  
 Concen: 0.524 ug/l  
 RT: 2.18 min Scan# 179  
 Delta R.T. 0.01 min  
 Lab File: VX017068.D  
 Acq: 01 Jul 2020 01:07

Tgt Ion	Resp	Lower	Upper
74	100		
45	77.9	49.8	149.3

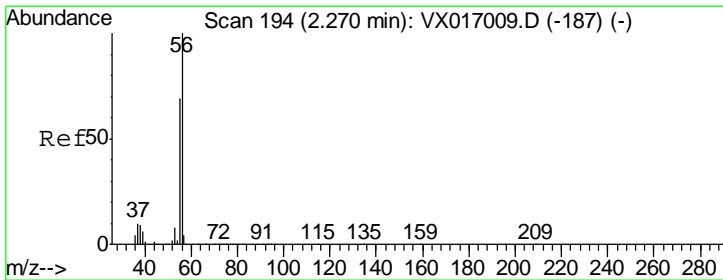
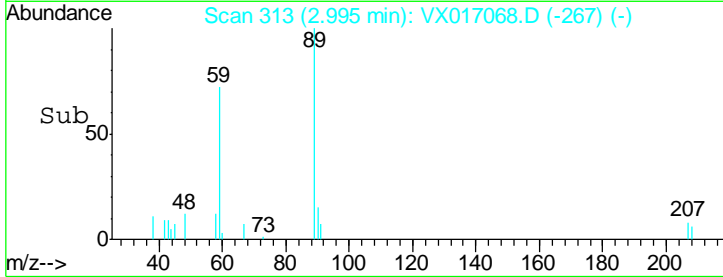
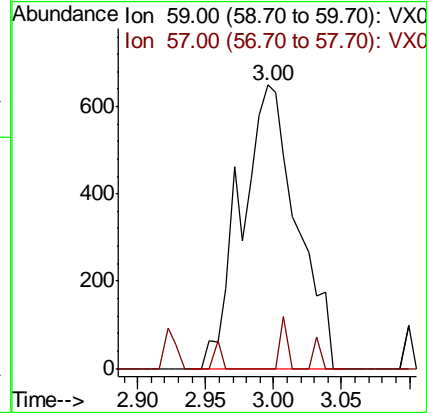
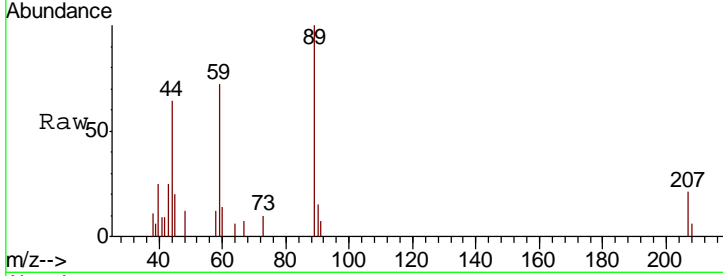




#11  
 Tert butyl alcohol  
 Concen: 3.454 ug/l  
 RT: 3.00 min Scan# 313  
 Delta R.T. -0.02 min  
 Lab File: VX017068.D  
 Acq: 01 Jul 2020 01:07

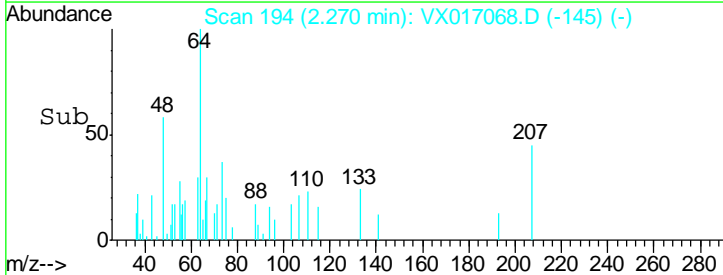
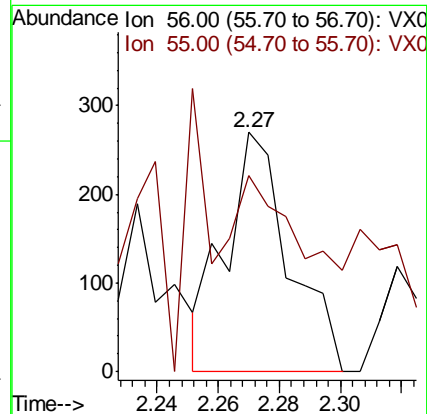
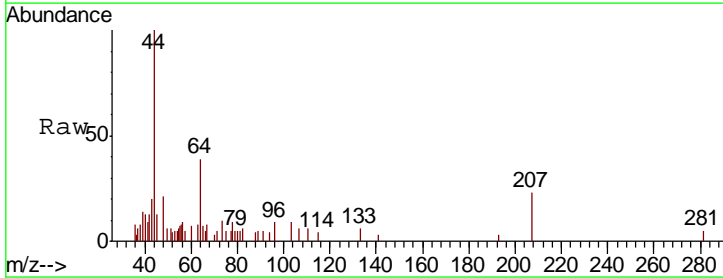
Instrument :  
 MSVOA\_X  
 ClientSampled :  
 PB129852ZHE#04

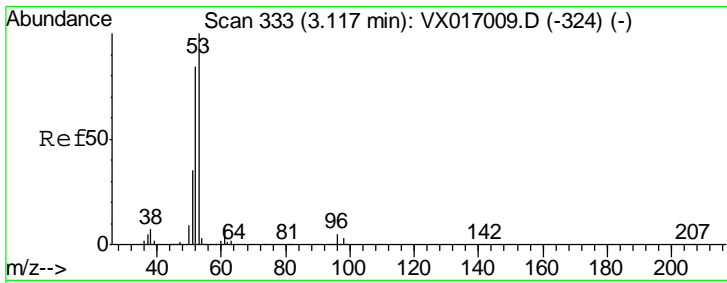
Tgt Ion: 59 Resp: 1868  
 Ion Ratio Lower Upper  
 59 100  
 57 2.4 8.2 12.2#



#13  
 Acrolein  
 Concen: 1.203 ug/l  
 RT: 2.27 min Scan# 194  
 Delta R.T. -0.00 min  
 Lab File: VX017068.D  
 Acq: 01 Jul 2020 01:07

Tgt Ion: 56 Resp: 389  
 Ion Ratio Lower Upper  
 56 100  
 55 27.5 55.7 83.5#

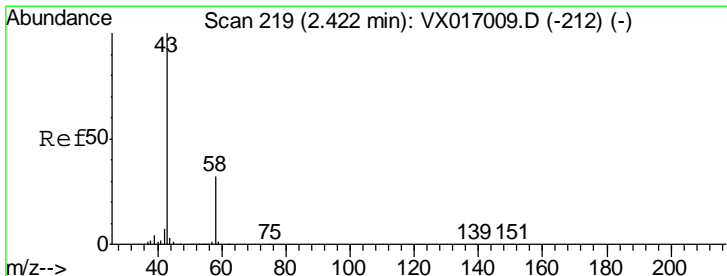
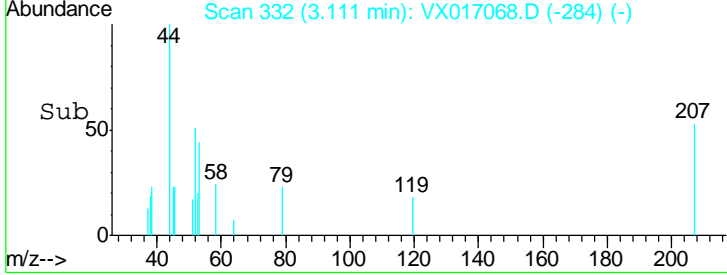
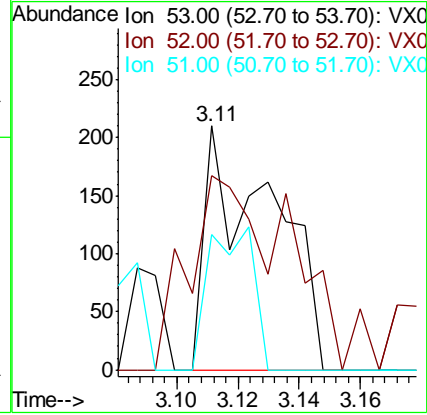
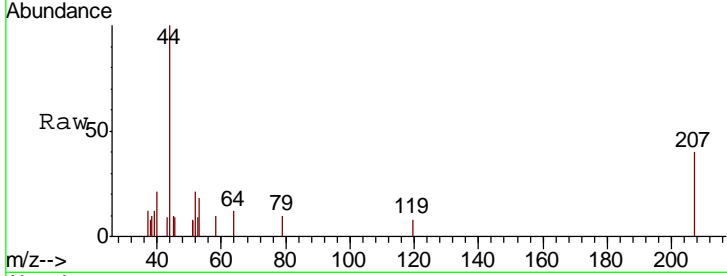




#15  
 Acrylonitrile  
 Concen: 0.246 ug/l  
 RT: 3.11 min Scan# 332  
 Delta R.T. -0.01 min  
 Lab File: VX017068.D  
 Acq: 01 Jul 2020 01:07

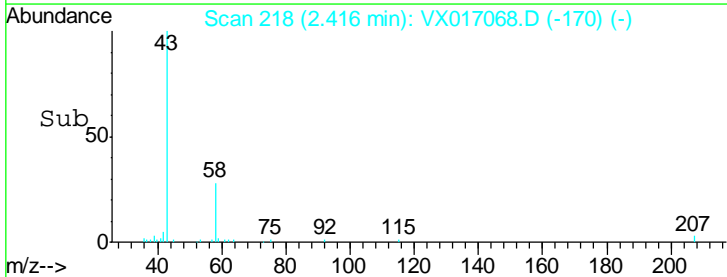
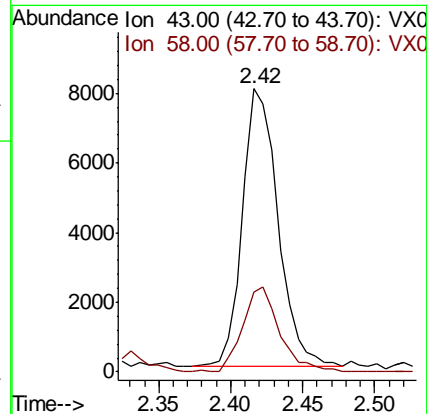
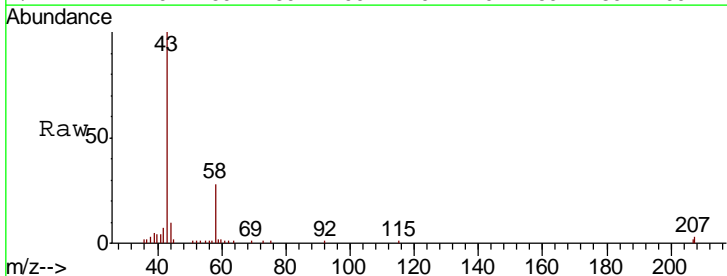
Instrument : MSVOA\_X  
 ClientSampleID : PB129852ZHE#04

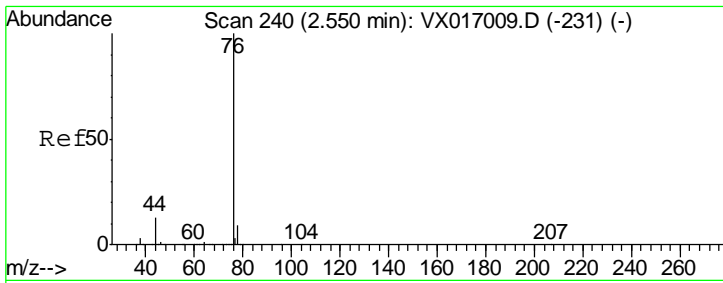
Tgt Ion	Resp	Lower	Upper
53	100		
52	80.6	65.6	98.4
51	38.8	28.3	42.5



#16  
 Acetone  
 Concen: 12.949 ug/l  
 RT: 2.42 min Scan# 218  
 Delta R.T. -0.01 min  
 Lab File: VX017068.D  
 Acq: 01 Jul 2020 01:07

Tgt Ion	Resp	Lower	Upper
43	100		
58	28.6	25.7	38.5

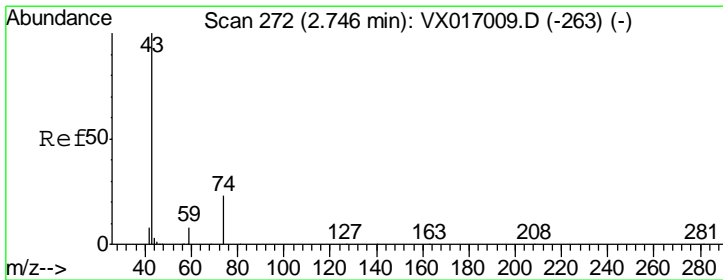
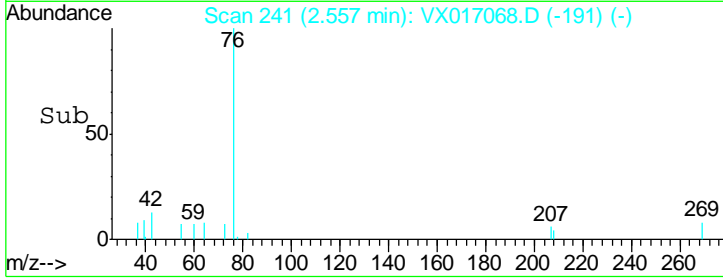
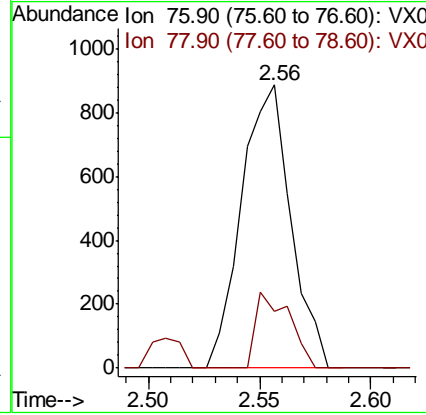
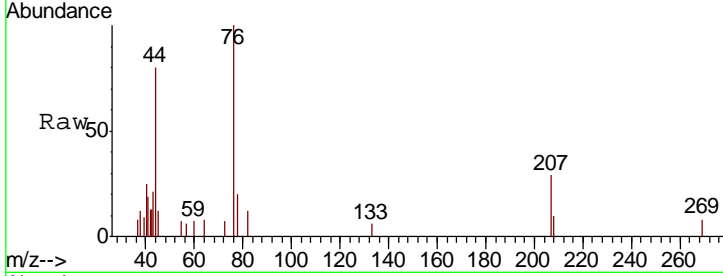




#17  
 Carbon Disulfide  
 Concen: 0.238 ug/l  
 RT: 2.56 min Scan# 241  
 Delta R.T. 0.01 min  
 Lab File: VX017068.D  
 Acq: 01 Jul 2020 01:07

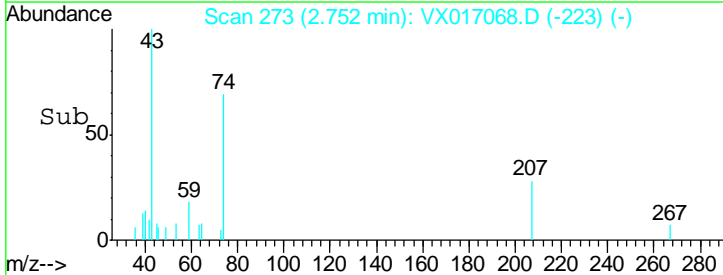
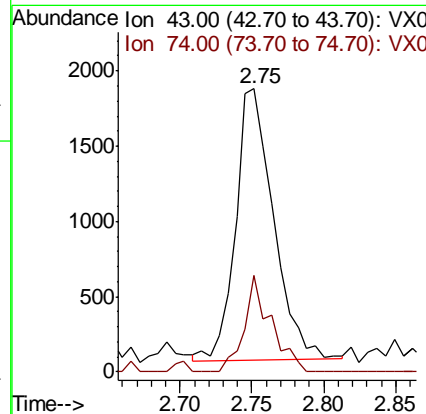
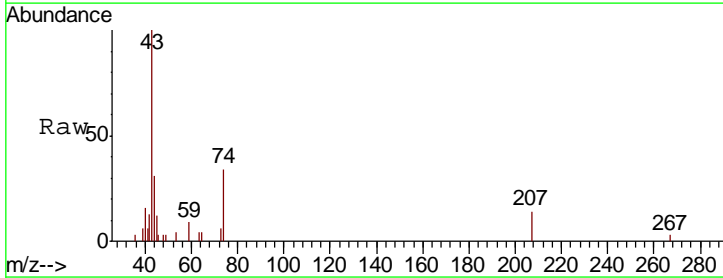
Instrument :  
 MSVOA\_X  
 ClientSampleID :  
 PB129852ZHE#04

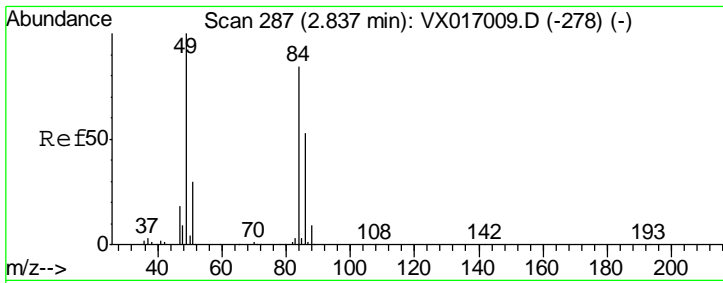
Tgt Ion: 76 Resp: 1367  
 Ion Ratio Lower Upper  
 76 100  
 78 19.8 7.2 10.8#



#18  
 Methyl Acetate  
 Concen: 1.196 ug/l  
 RT: 2.75 min Scan# 273  
 Delta R.T. 0.01 min  
 Lab File: VX017068.D  
 Acq: 01 Jul 2020 01:07

Tgt Ion: 43 Resp: 3310  
 Ion Ratio Lower Upper  
 43 100  
 74 24.9 19.3 28.9

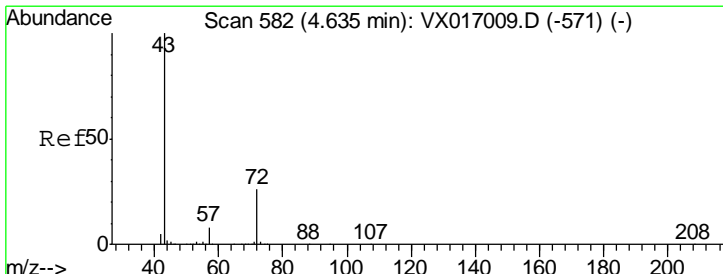
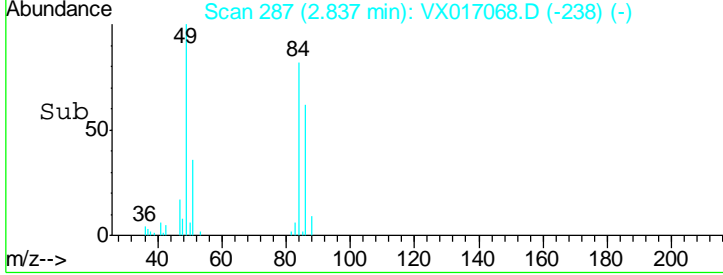
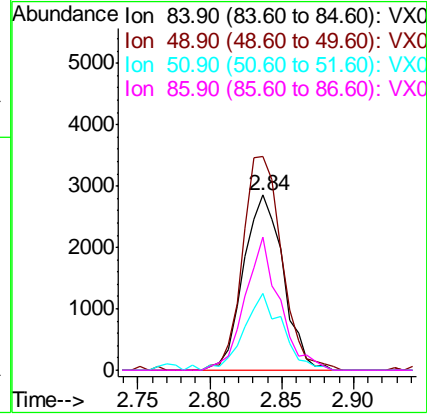
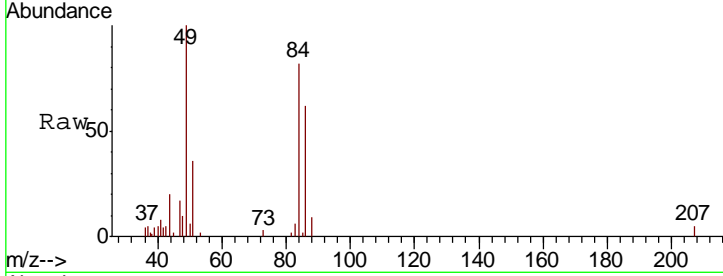




#20  
 Methylene Chloride  
 Concen: 1.486 ug/l  
 RT: 2.84 min Scan# 287  
 Delta R.T. 0.00 min  
 Lab File: VX017068.D  
 Acq: 01 Jul 2020 01:07

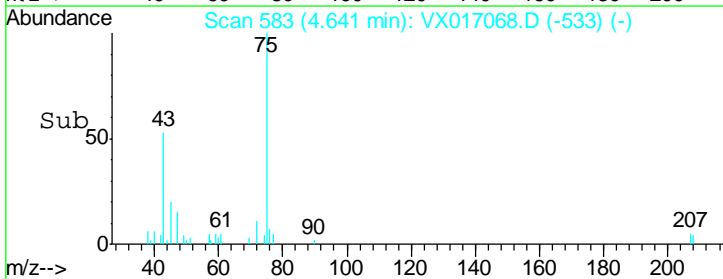
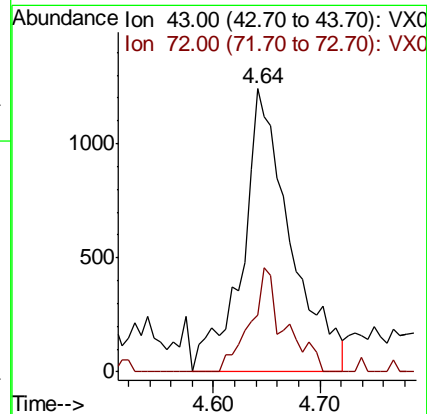
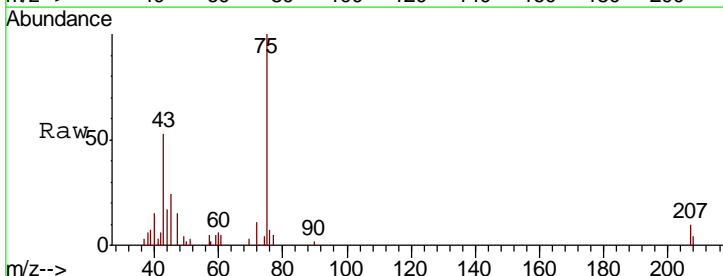
Instrument : MSVOA\_X  
 ClientSampled : PB129852ZHE#04

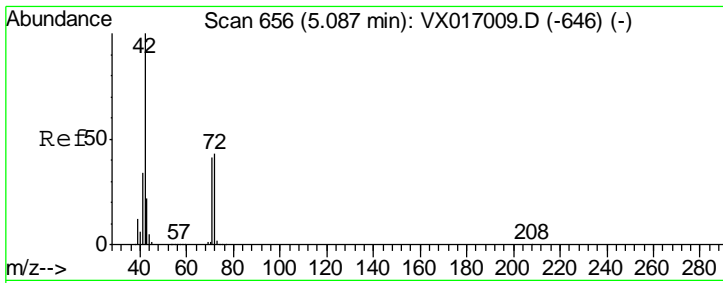
Tgt Ion	Resp	Lower	Upper
84	100		
49	122.2	94.7	142.1
51	43.7	28.6	42.8#
86	76.1	50.5	75.7#



#25  
 2-Butanone  
 Concen: 2.209 ug/l  
 RT: 4.64 min Scan# 583  
 Delta R.T. 0.01 min  
 Lab File: VX017068.D  
 Acq: 01 Jul 2020 01:07

Tgt Ion	Resp	Lower	Upper
43	100		
72	19.9	20.8	31.2#

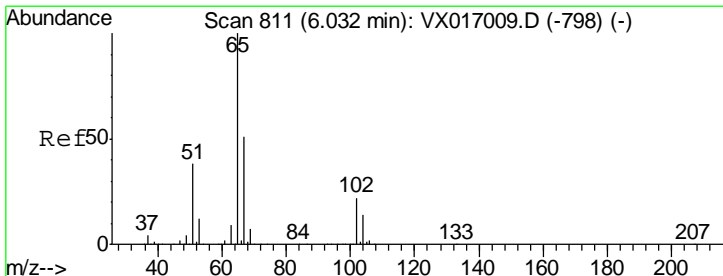
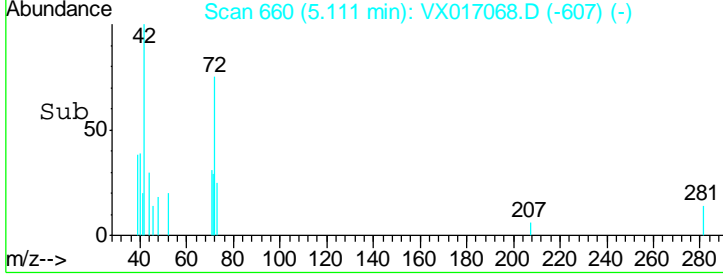
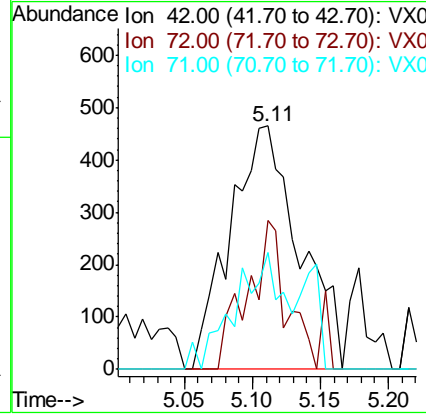
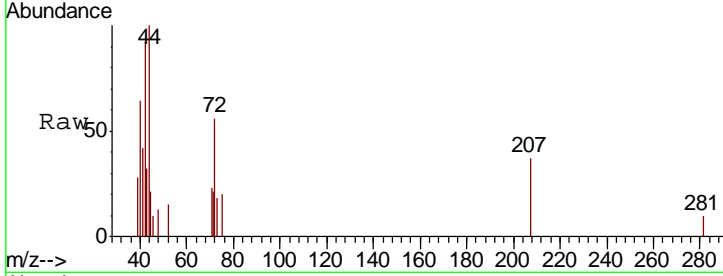




#29  
 Tetrahydrofuran  
 Concen: 1.419 ug/l  
 RT: 5.11 min Scan# 660  
 Delta R.T. 0.02 min  
 Lab File: VX017068.D  
 Acq: 01 Jul 2020 01:07

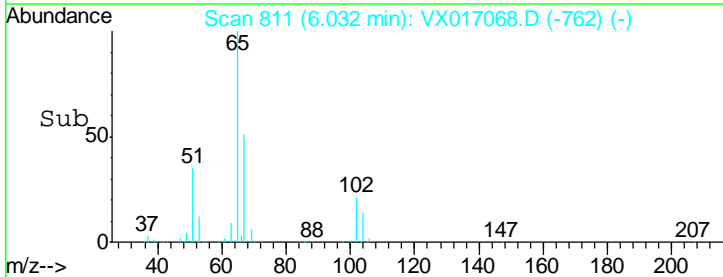
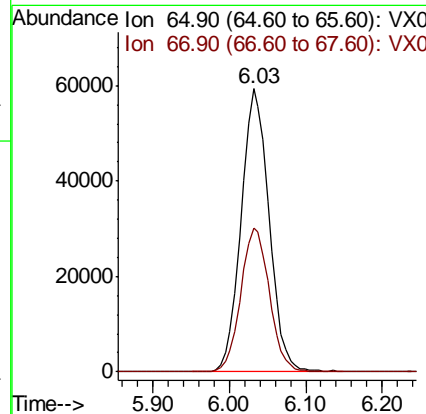
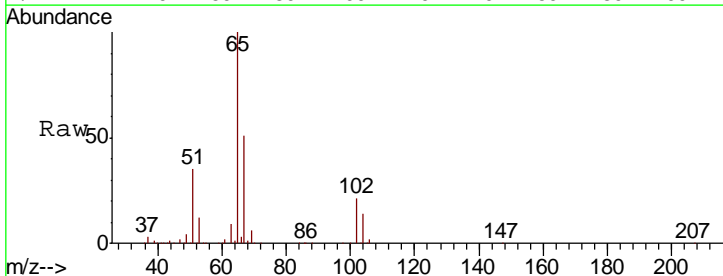
**Instrument :**  
 MSVOA\_X  
**ClientSampled :**  
 PB129852ZHE#04

Tgt Ion	Resp	Lower	Upper
42	1657		
72	34.3	35.3	52.9#
71	32.9	33.1	49.7#

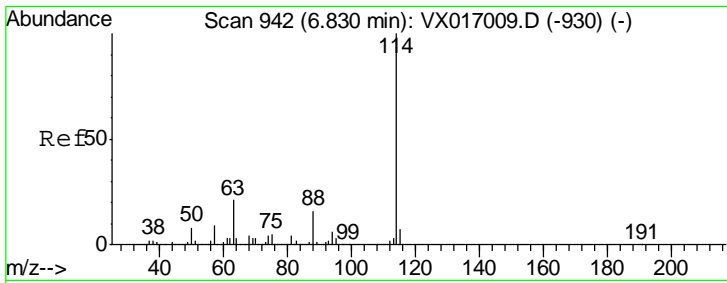


#33  
 1,2-Dichloroethane-d4  
 Concen: 53.104 ug/l  
 RT: 6.03 min Scan# 811  
 Delta R.T. -0.00 min  
 Lab File: VX017068.D  
 Acq: 01 Jul 2020 01:07

Tgt Ion	Resp	Lower	Upper
65	150532		
67	52.0	0.0	103.8



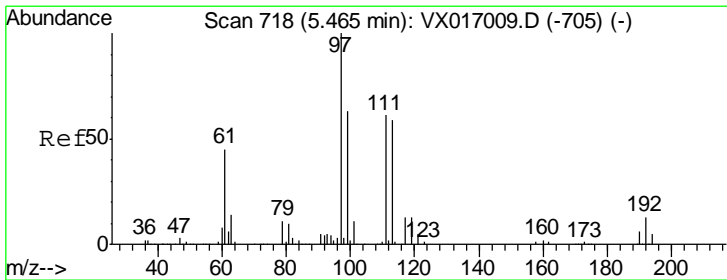
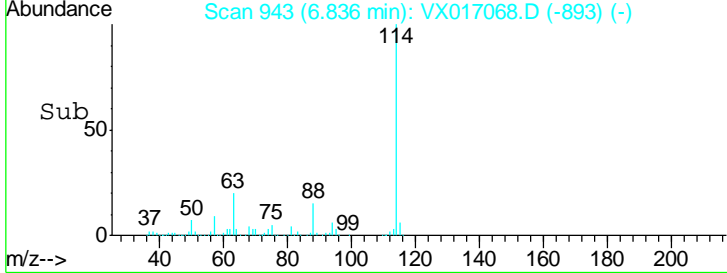
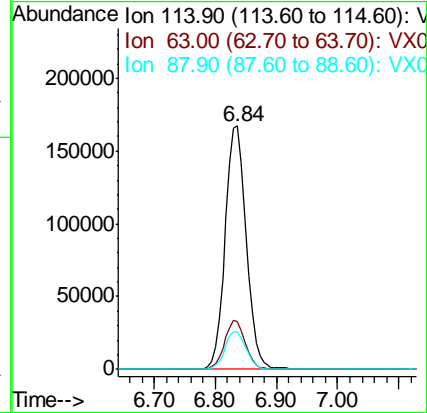
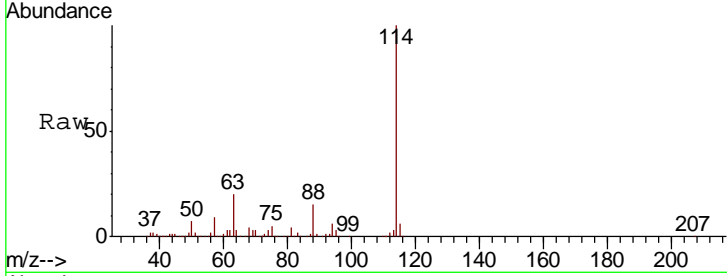




#34  
 1,4-Difluorobenzene  
 Concen: 50.000 ug/l  
 RT: 6.84 min Scan# 943  
 Delta R.T. 0.01 min  
 Lab File: VX017068.D  
 Acq: 01 Jul 2020 01:07

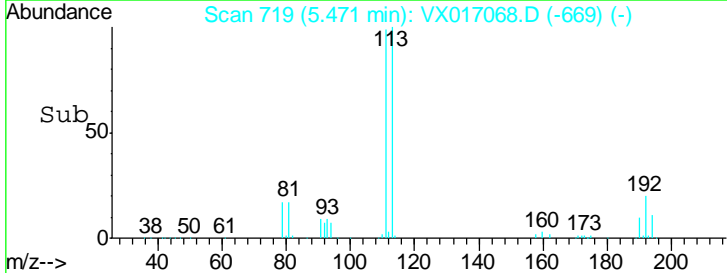
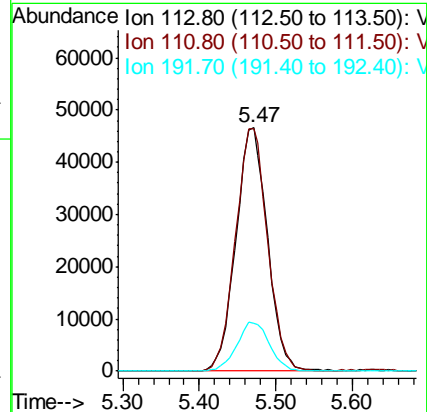
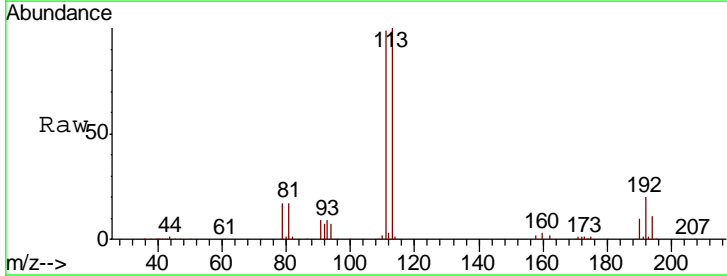
Instrument :  
 MSVOA\_X  
 ClientSampled :  
 PB129852ZHE#04

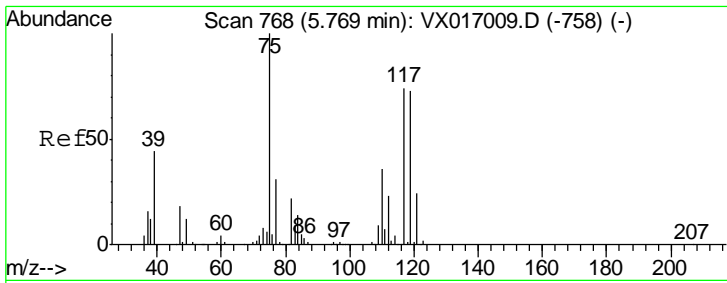
Tgt Ion	Resp	Lower	Upper
114	399064		
63	19.8	0.0	41.4
88	15.2	0.0	32.4



#35  
 Dibromofluoromethane  
 Concen: 52.596 ug/l  
 RT: 5.47 min Scan# 719  
 Delta R.T. 0.01 min  
 Lab File: VX017068.D  
 Acq: 01 Jul 2020 01:07

Tgt Ion	Resp	Lower	Upper
113	132772		
111	101.1	81.9	122.9
192	20.8	16.7	25.1

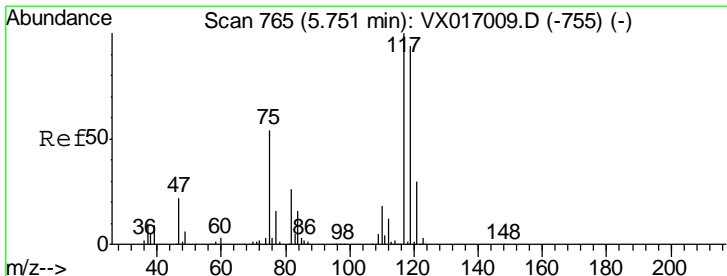
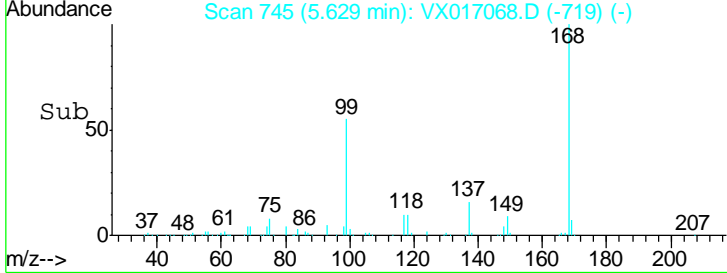
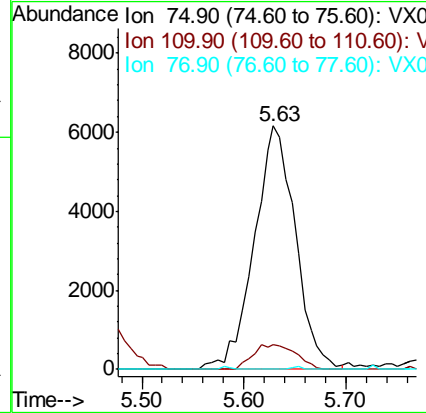
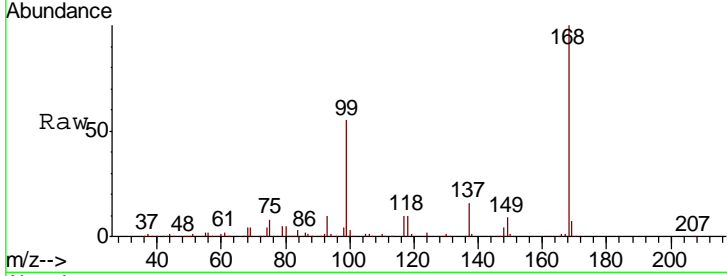




#36  
 1,1-Dichloropropene  
 Concen: 4.582 ug/l  
 RT: 5.63 min Scan# 745  
 Delta R.T. -0.14 min  
 Lab File: VX017068.D  
 Acq: 01 Jul 2020 01:07

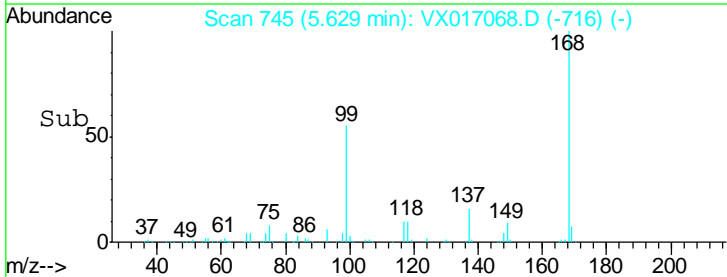
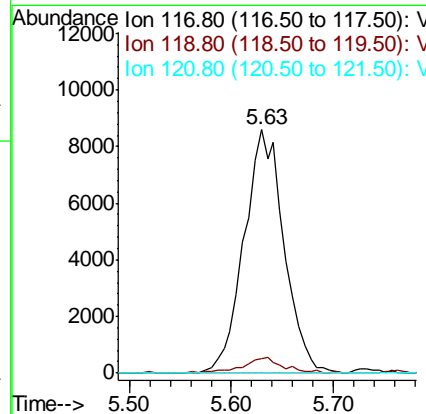
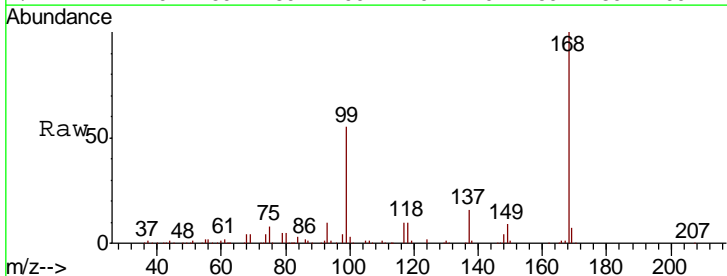
Instrument :  
 MSVOA\_X  
 ClientSampleId :  
 PB129852ZHE#04

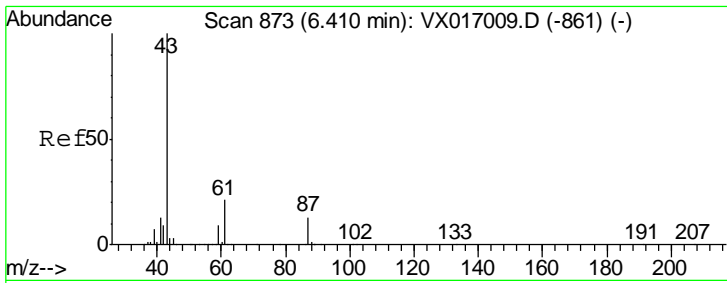
Tgt Ion	Resp	Lower	Upper
75	17280		
75	100		
110	10.6	18.1	54.1#
77	0.0	24.6	37.0#



#38  
 Carbon Tetrachloride  
 Concen: 5.632 ug/l  
 RT: 5.63 min Scan# 745  
 Delta R.T. -0.12 min  
 Lab File: VX017068.D  
 Acq: 01 Jul 2020 01:07

Tgt Ion	Resp	Lower	Upper
117	23396		
117	100		
119	6.1	75.4	113.0#
121	0.0	23.8	35.6#

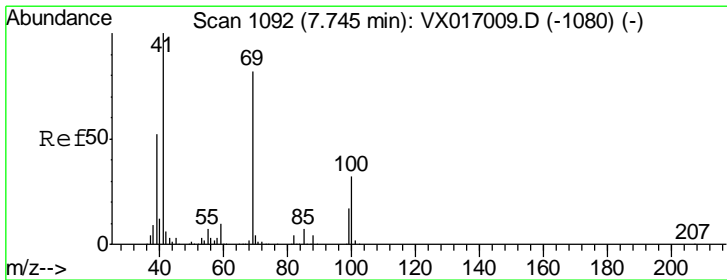
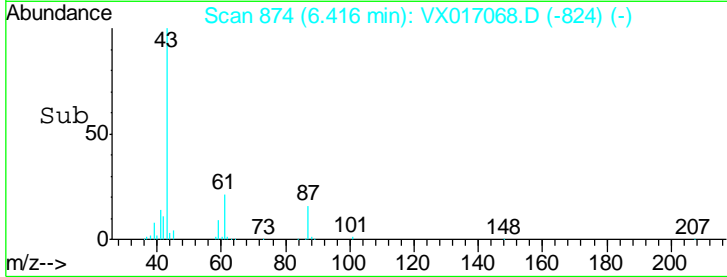
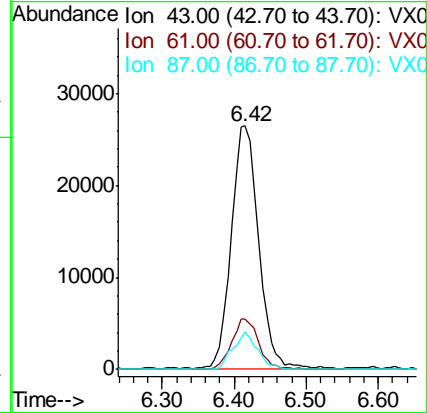
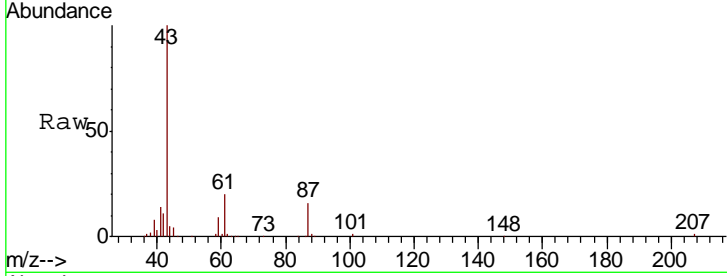




#43  
 Isopropyl Acetate  
 Concen: 10.907 ug/l  
 RT: 6.42 min Scan# 874  
 Delta R.T. 0.01 min  
 Lab File: VX017068.D  
 Acq: 01 Jul 2020 01:07

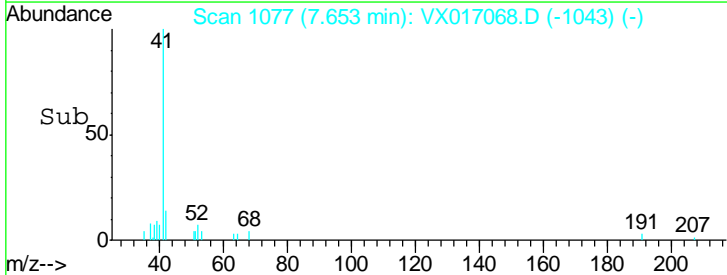
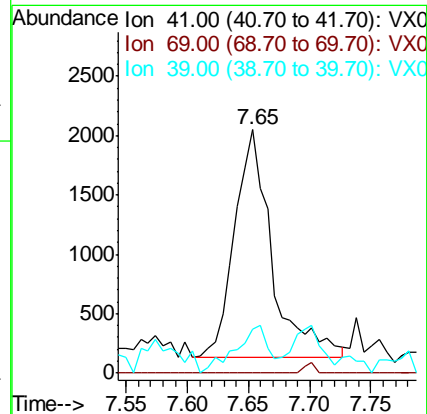
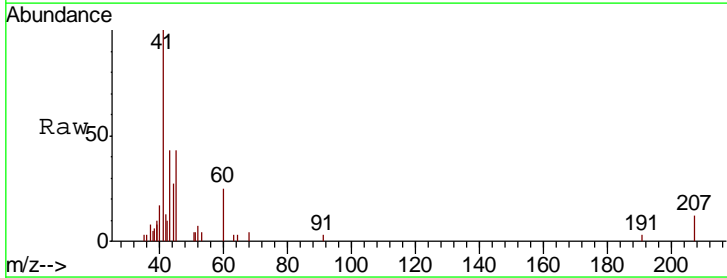
Instrument :  
 MSVOA\_X  
 ClientSampled :  
 PB129852ZHE#04

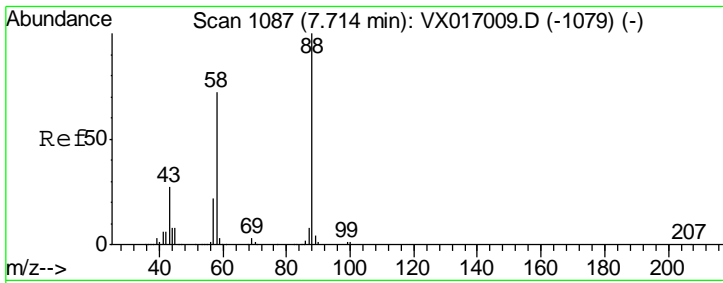
Tgt Ion	Resp	Lower	Upper
43	100		
61	20.5	16.2	24.2
87	14.0	10.7	16.1



#48  
 Methyl methacrylate  
 Concen: 1.348 ug/l  
 RT: 7.65 min Scan# 1077  
 Delta R.T. -0.09 min  
 Lab File: VX017068.D  
 Acq: 01 Jul 2020 01:07

Tgt Ion	Resp	Lower	Upper
41	100		
69	0.0	65.8	98.8#
39	0.0	42.5	63.7#

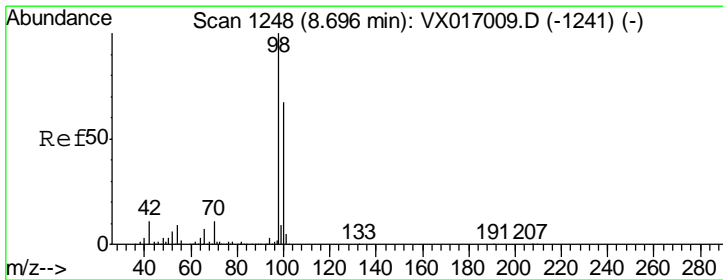
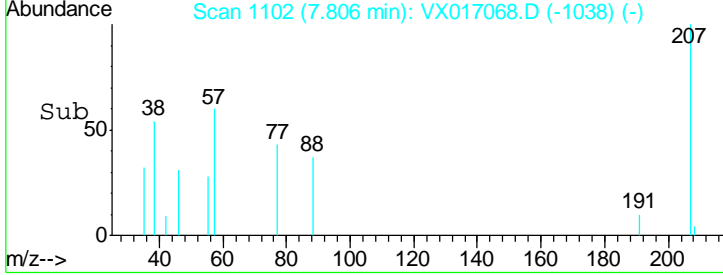
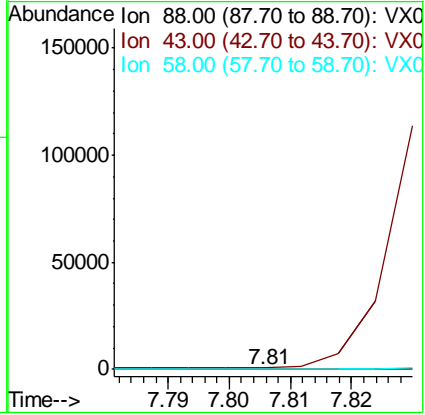
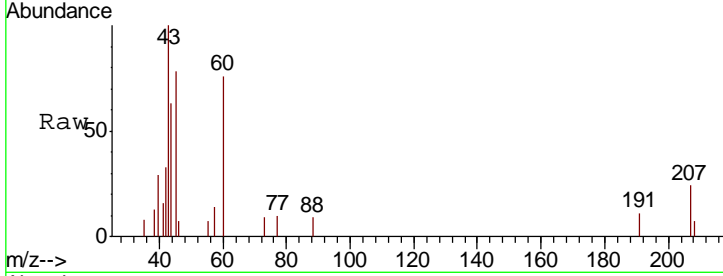




#49  
 1,4-Dioxane  
 Concen: 0.394 ug/l  
 RT: 7.81 min Scan# 1102  
 Delta R.T. 0.09 min  
 Lab File: VX017068.D  
 Acq: 01 Jul 2020 01:07

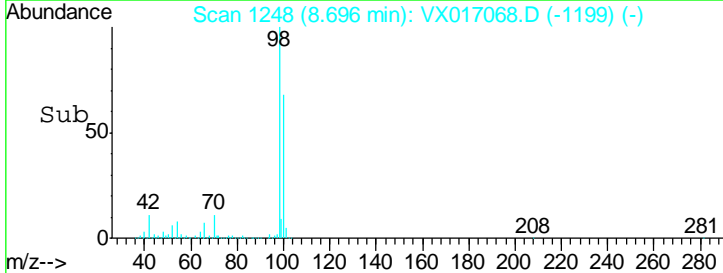
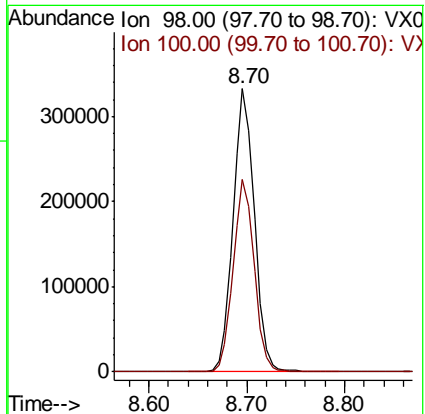
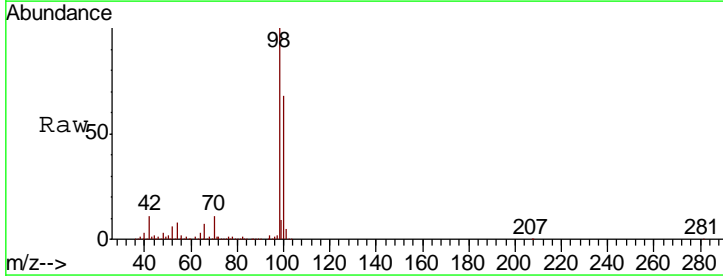
**Instrument :**  
 MSVOA\_X  
**ClientSampled :**  
 PB129852ZHE#04

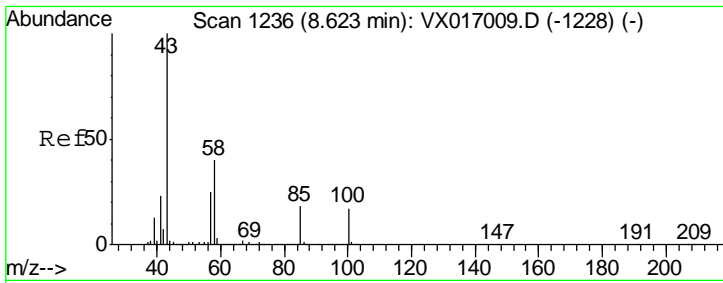
Tgt Ion	Resp	Lower	Upper
88	100		
43	0.0	25.8	38.8#
58	0.0	54.8	82.2#



#50  
 Toluene-d8  
 Concen: 53.791 ug/l  
 RT: 8.70 min Scan# 1248  
 Delta R.T. -0.00 min  
 Lab File: VX017068.D  
 Acq: 01 Jul 2020 01:07

Tgt Ion	Resp	Lower	Upper
98	100		
100	67.6	53.8	80.6

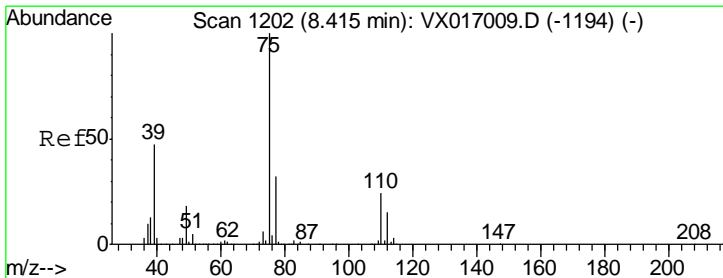
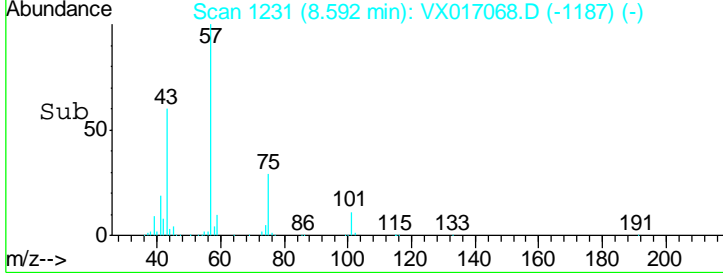
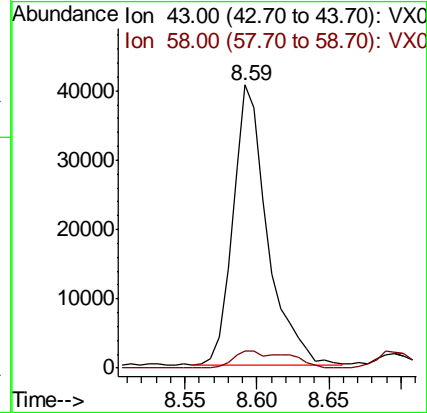
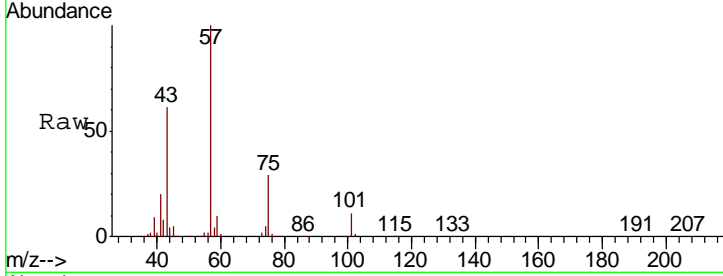




#51  
 4-Methyl-2-Pentanone  
 Concen: 17.825 ug/l  
 RT: 8.59 min Scan# 1231  
 Delta R.T. -0.03 min  
 Lab File: VX017068.D  
 Acq: 01 Jul 2020 01:07

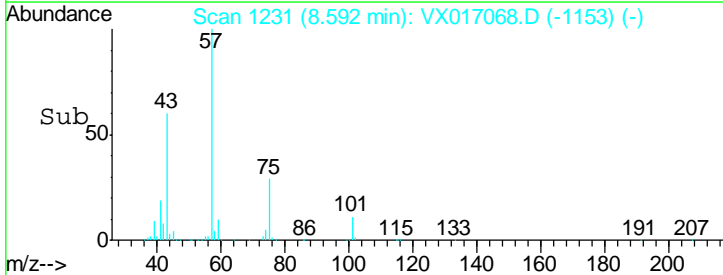
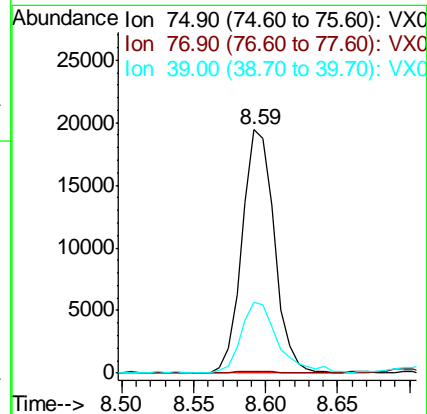
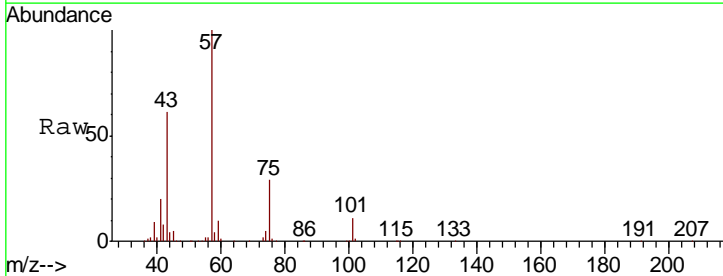
Instrument :  
 MSVOA\_X  
 ClientSampleId :  
 PB129852ZHE#04

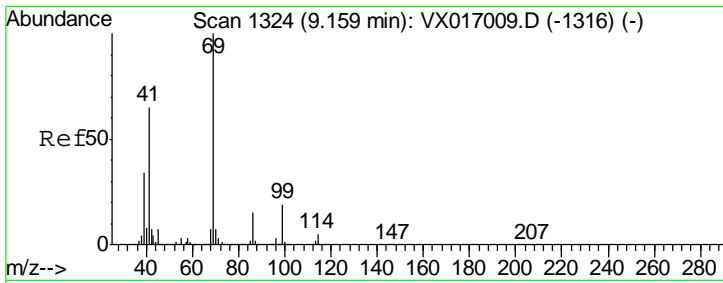
Tgt Ion: 43 Resp: 67568  
 Ion Ratio Lower Upper  
 43 100  
 58 6.4 31.9 47.9#



#54  
 cis-1,3-Dichloropropene  
 Concen: 6.373 ug/l  
 RT: 8.59 min Scan# 1231  
 Delta R.T. 0.18 min  
 Lab File: VX017068.D  
 Acq: 01 Jul 2020 01:07

Tgt Ion: 75 Resp: 30185  
 Ion Ratio Lower Upper  
 75 100  
 77 0.8 25.2 37.8#  
 39 29.3 37.4 56.2#

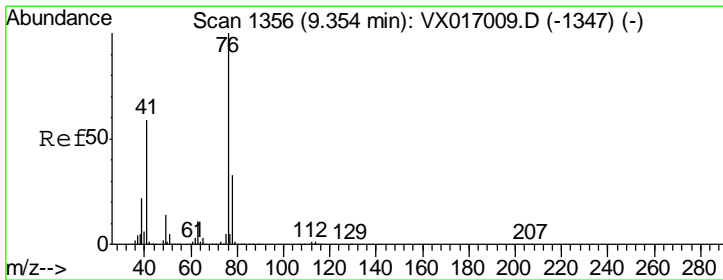
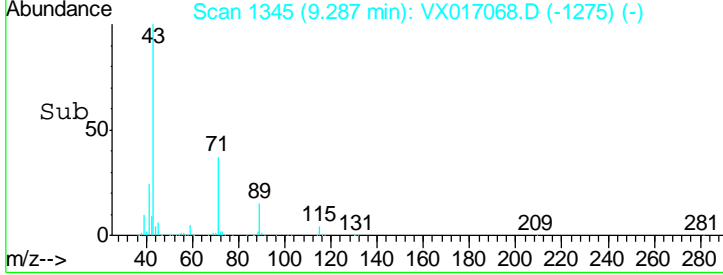
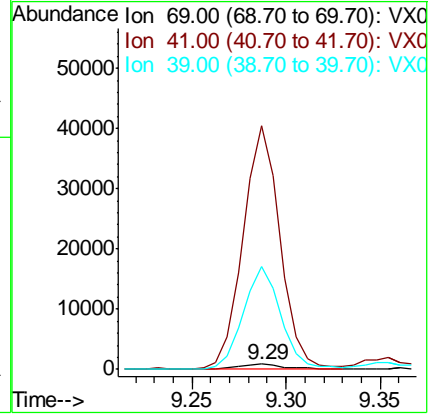
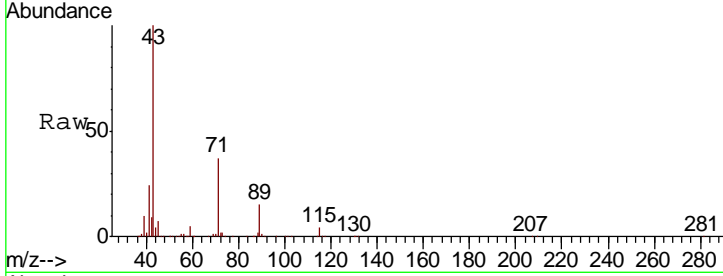




#56  
 Ethyl methacrylate  
 Concen: 0.365 ug/l  
 RT: 9.29 min Scan# 1345  
 Delta R.T. 0.13 min  
 Lab File: VX017068.D  
 Acq: 01 Jul 2020 01:07

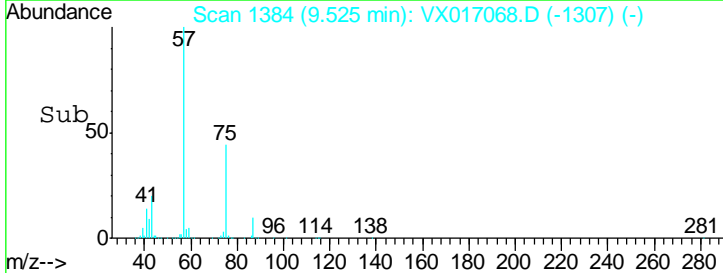
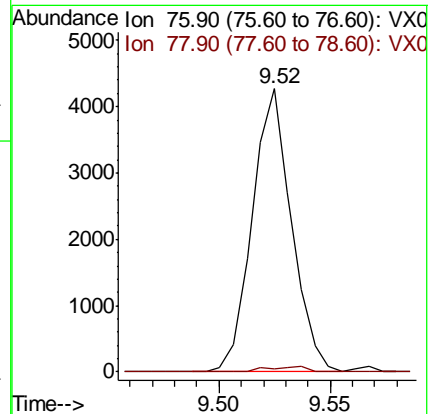
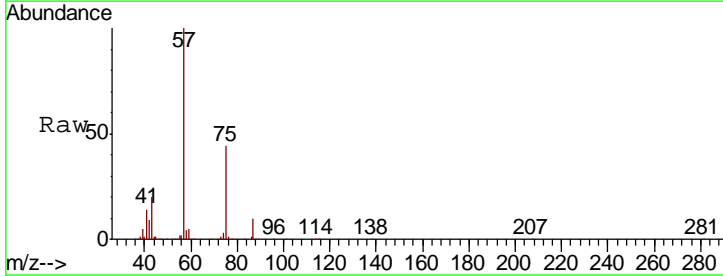
Instrument : MSVOA\_X  
 ClientSampled : PB129852ZHE#04

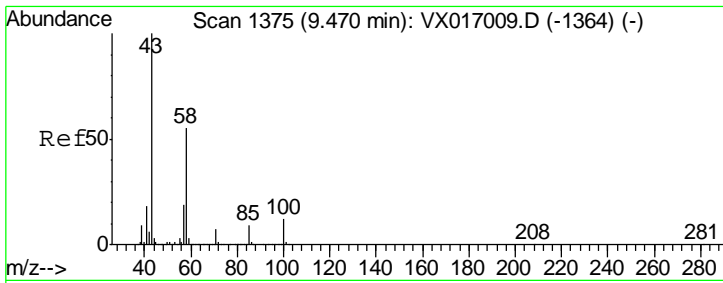
Tgt Ion	Resp	Lower	Upper
69	1468		
41	3732.6	53.6	80.4#
39	1612.3	28.2	42.2#



#57  
 1,3-Dichloropropane  
 Concen: 1.098 ug/l  
 RT: 9.52 min Scan# 1384  
 Delta R.T. 0.17 min  
 Lab File: VX017068.D  
 Acq: 01 Jul 2020 01:07

Tgt Ion	Resp	Lower	Upper
76	5252		
78	2.0	25.9	38.9#

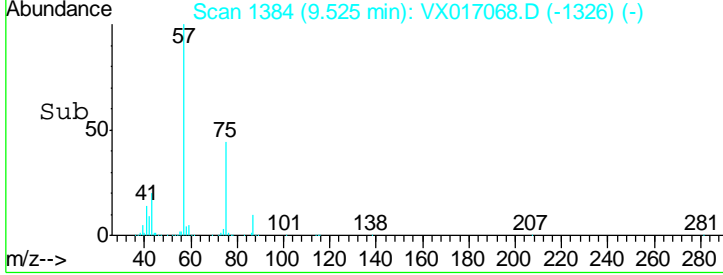
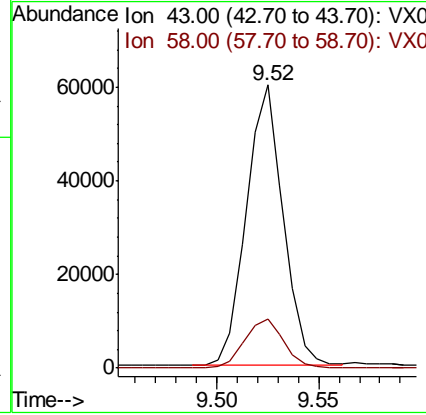
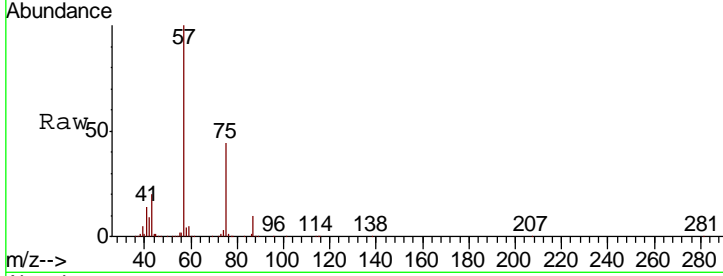




#59  
 2-Hexanone  
 Concen: 26.947 ug/l  
 RT: 9.52 min Scan# 1384  
 Delta R.T. 0.05 min  
 Lab File: VX017068.D  
 Acq: 01 Jul 2020 01:07

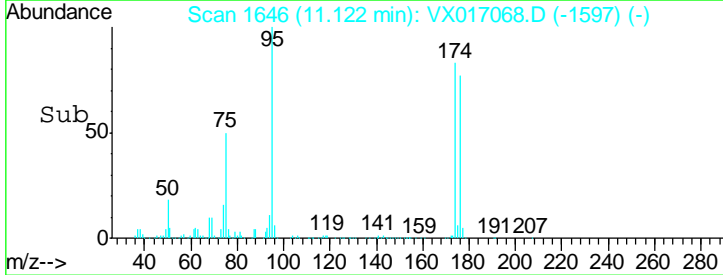
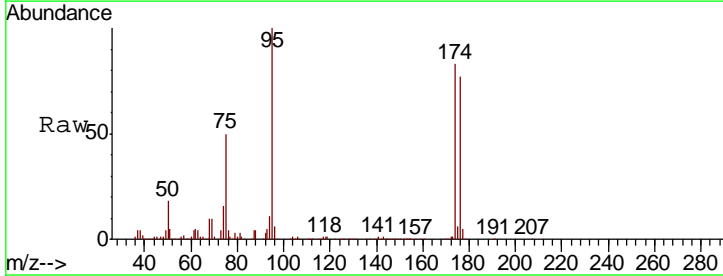
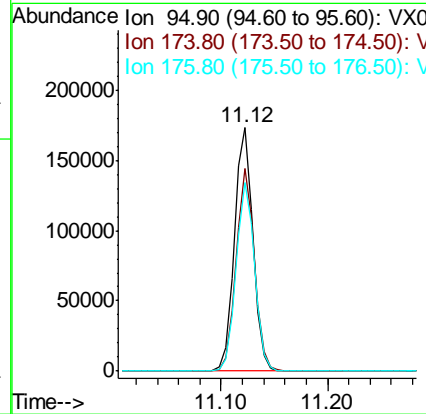
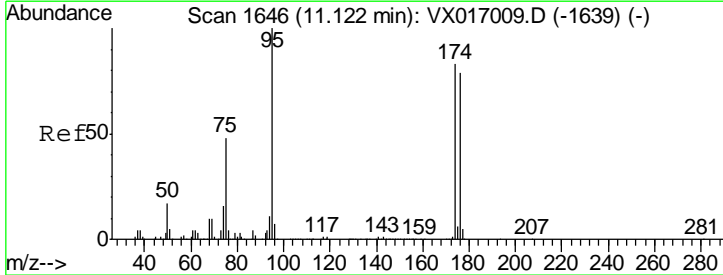
**Instrument :**  
 MSVOA\_X  
**ClientSampled :**  
 PB129852ZHE#04

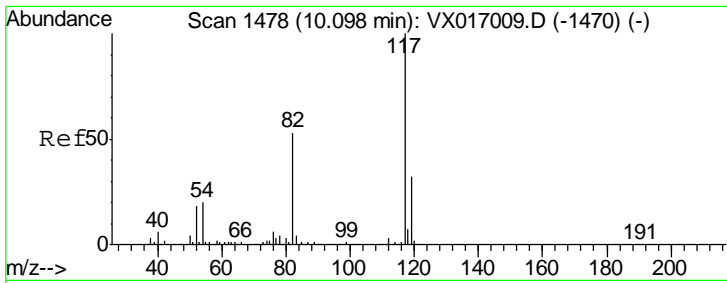
Tgt Ion	Resp	Lower	Upper
43	100		
58	18.8	27.9	83.6#



#62  
 4-Bromofluorobenzene  
 Concen: 57.901 ug/l  
 RT: 11.12 min Scan# 1646  
 Delta R.T. -0.00 min  
 Lab File: VX017068.D  
 Acq: 01 Jul 2020 01:07

Tgt Ion	Resp	Lower	Upper
95	100		
174	82.6	0.0	164.0
176	77.6	0.0	157.6

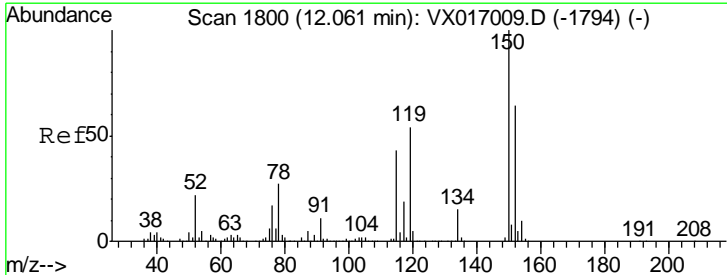
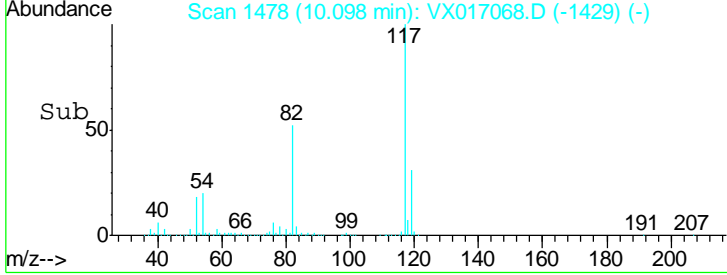
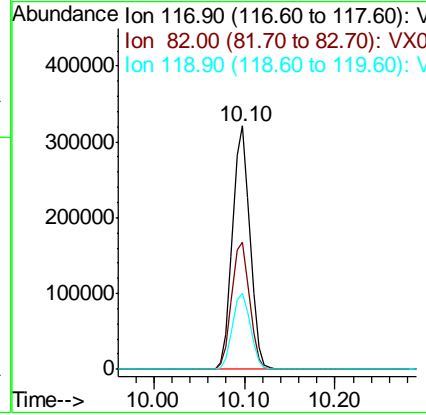
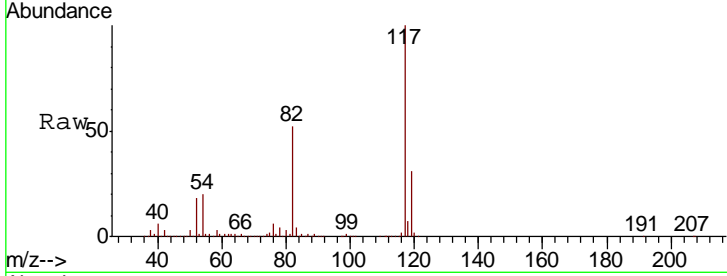




#63  
 Chlorobenzene-d5  
 Concen: 50.000 ug/l  
 RT: 10.10 min Scan# 1478  
 Delta R.T. -0.00 min  
 Lab File: VX017068.D  
 Acq: 01 Jul 2020 01:07

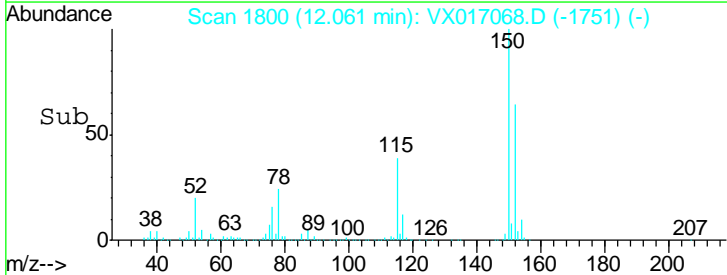
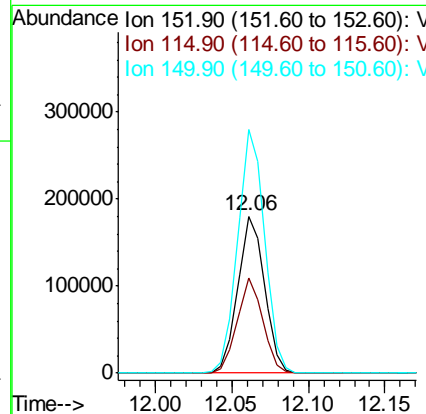
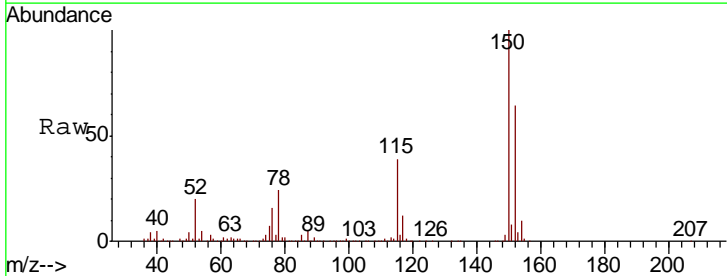
Instrument : MSVOA\_X  
 ClientSampled : PB129852ZHE#04

Tgt Ion	Resp	Lower	Upper
117	430636		
82	52.4	42.6	63.8
119	31.0	25.4	38.2

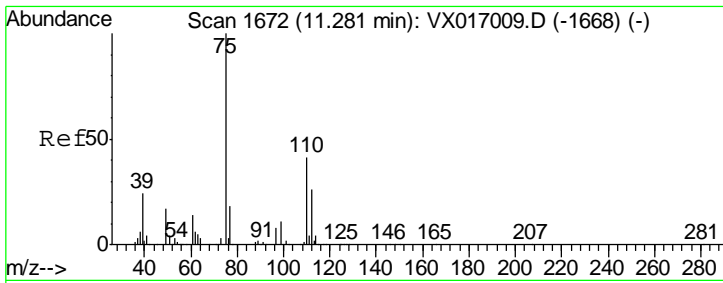


#72  
 1,4-Dichlorobenzene-d4  
 Concen: 50.000 ug/l  
 RT: 12.06 min Scan# 1800  
 Delta R.T. -0.00 min  
 Lab File: VX017068.D  
 Acq: 01 Jul 2020 01:07

Tgt Ion	Resp	Lower	Upper
152	218154		
115	58.0	40.9	122.7
150	156.4	0.0	351.6



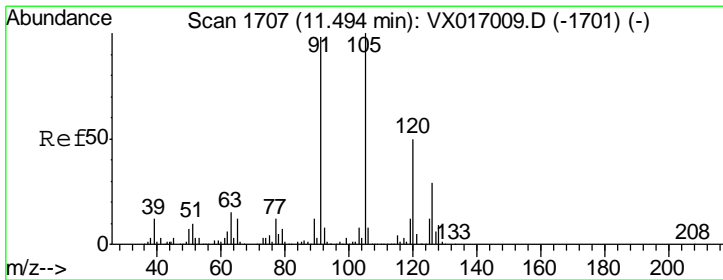
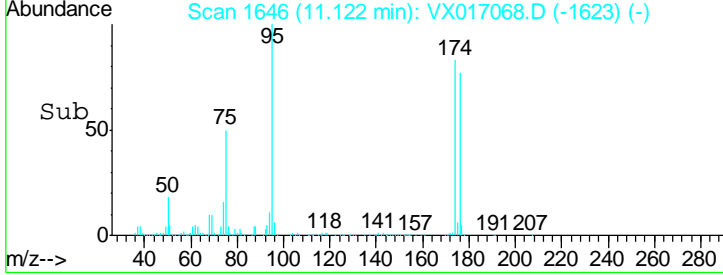
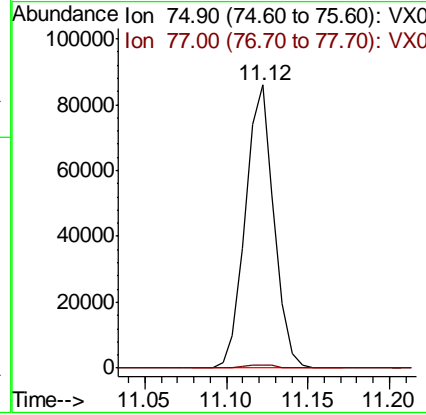
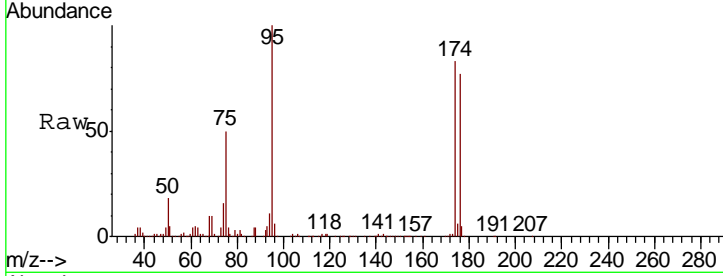




#76  
 1,2,3-Trichloropropane  
 Concen: 24.447 ug/l  
 RT: 11.12 min Scan# 1646  
 Delta R.T. -0.16 min  
 Lab File: VX017068.D  
 Acq: 01 Jul 2020 01:07

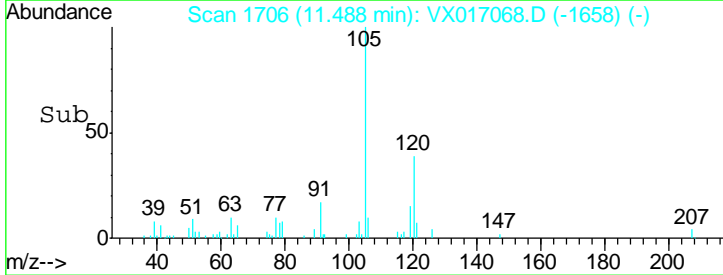
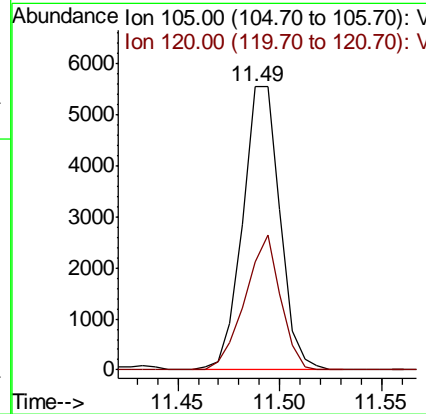
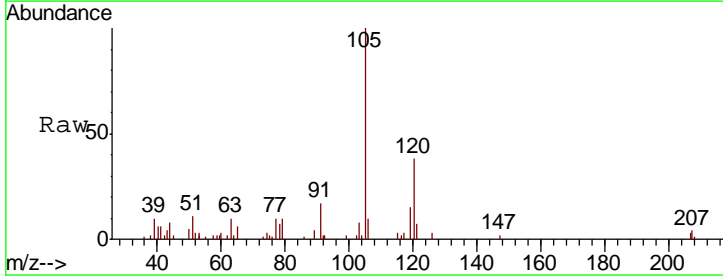
Instrument : MSVOA\_X  
 ClientSampled : PB129852ZHE#04

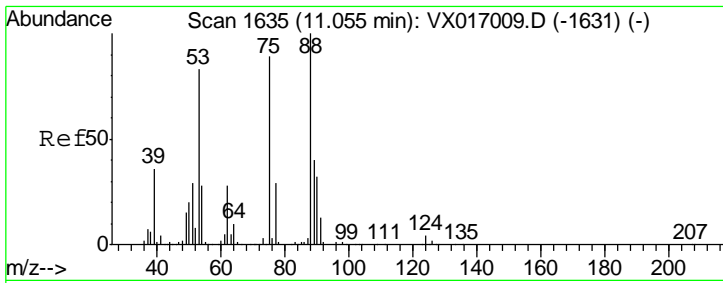
Tgt Ion: 75 Resp: 104873  
 Ion Ratio Lower Upper  
 75 100  
 77 1.2 20.2 60.6#



#80  
 1,3,5-Trimethylbenzene  
 Concen: 0.596 ug/l  
 RT: 11.49 min Scan# 1706  
 Delta R.T. -0.01 min  
 Lab File: VX017068.D  
 Acq: 01 Jul 2020 01:07

Tgt Ion: 105 Resp: 7062  
 Ion Ratio Lower Upper  
 105 100  
 120 45.2 24.9 74.6

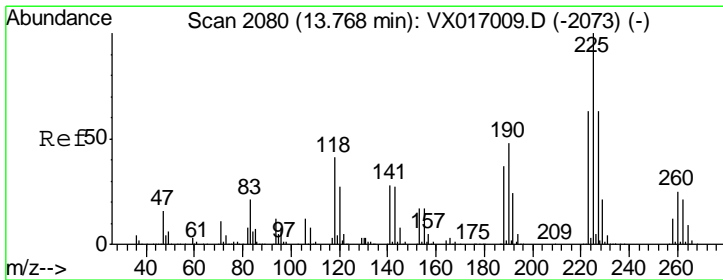
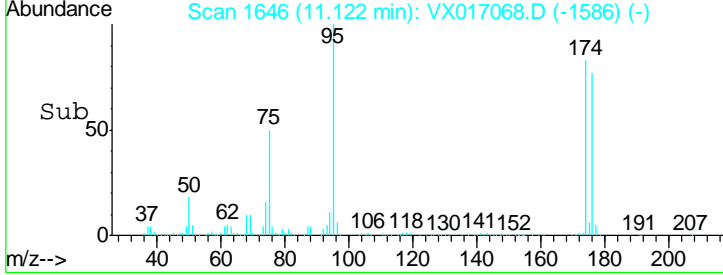
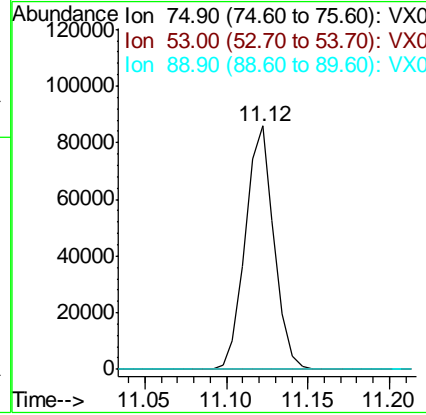
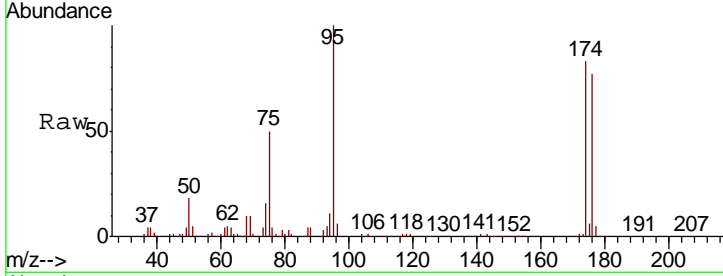




#81  
 trans-1,4-Dichloro-2-butene  
 Concen: 63.308 ug/l  
 RT: 11.12 min Scan# 1646  
 Delta R.T. 0.07 min  
 Lab File: VX017068.D  
 Acq: 01 Jul 2020 01:07

Instrument : MSVOA\_X  
 ClientSampleId : PB129852ZHE#04

Tgt Ion	Resp	Lower	Upper
75	104873		
53	0.3	72.4	108.6#
89	0.0	37.0	55.4#



#94  
 Hexachlorobutadiene  
 Concen: 1.029 ug/l  
 RT: 13.76 min Scan# 2079  
 Delta R.T. -0.01 min  
 Lab File: VX017068.D  
 Acq: 01 Jul 2020 01:07

Tgt Ion	Resp	Lower	Upper
225	324		
223	55.9	32.5	97.5
227	30.9	33.1	99.2#

