

Data Path : Z:\VOASRV\HPCHEM1\MSVOA X\DATA\VX070119\
 Data File : VX010596.D
 Acq On : 01 Jul 2019 17:18
 Operator : JC/SP
 Sample : K3557-02
 Misc : 5.0mL/MSVOA X/WATER
 ALS Vial : 21 Sample Multiplier: 1

Instrument :
 MSVOA_X
 ClientSampleId :
 IDW-EW03-CONCRETE

Quant Time: Jul 02 04:53:52 2019
 Quant Method : Z:\VOASRV\HPCHEM1\MSVOA_X\METHOD\82X061919W.M
 Quant Title : SW846 8260
 QLast Update : Thu Jun 20 03:31:56 2019
 Response via : Initial Calibration

Internal Standards	R.T.	QIon	Response	Conc	Units	Dev(Min)
1) Pentafluorobenzene	5.67	168	253329	50.00	ug/l	0.00
34) 1,4-Difluorobenzene	6.86	114	391603	50.00	ug/l	0.00
63) Chlorobenzene-d5	10.11	117	357553	50.00	ug/l	0.00
72) 1,4-Dichlorobenzene-d4	12.08	152	163159	50.00	ug/l	0.00

System Monitoring Compounds

33) 1,2-Dichloroethane-d4	6.06	65	122684	51.65	ug/l	0.00
Spiked Amount	50.000		Recovery	=	103.30%	
35) Dibromofluoromethane	5.50	113	114698	47.87	ug/l	0.00
Spiked Amount	50.000		Recovery	=	95.74%	
50) Toluene-d8	8.71	98	458925	50.07	ug/l	0.00
Spiked Amount	50.000		Recovery	=	100.14%	
62) 4-Bromofluorobenzene	11.13	95	154365	46.64	ug/l	0.00
Spiked Amount	50.000		Recovery	=	93.28%	

Target Compounds

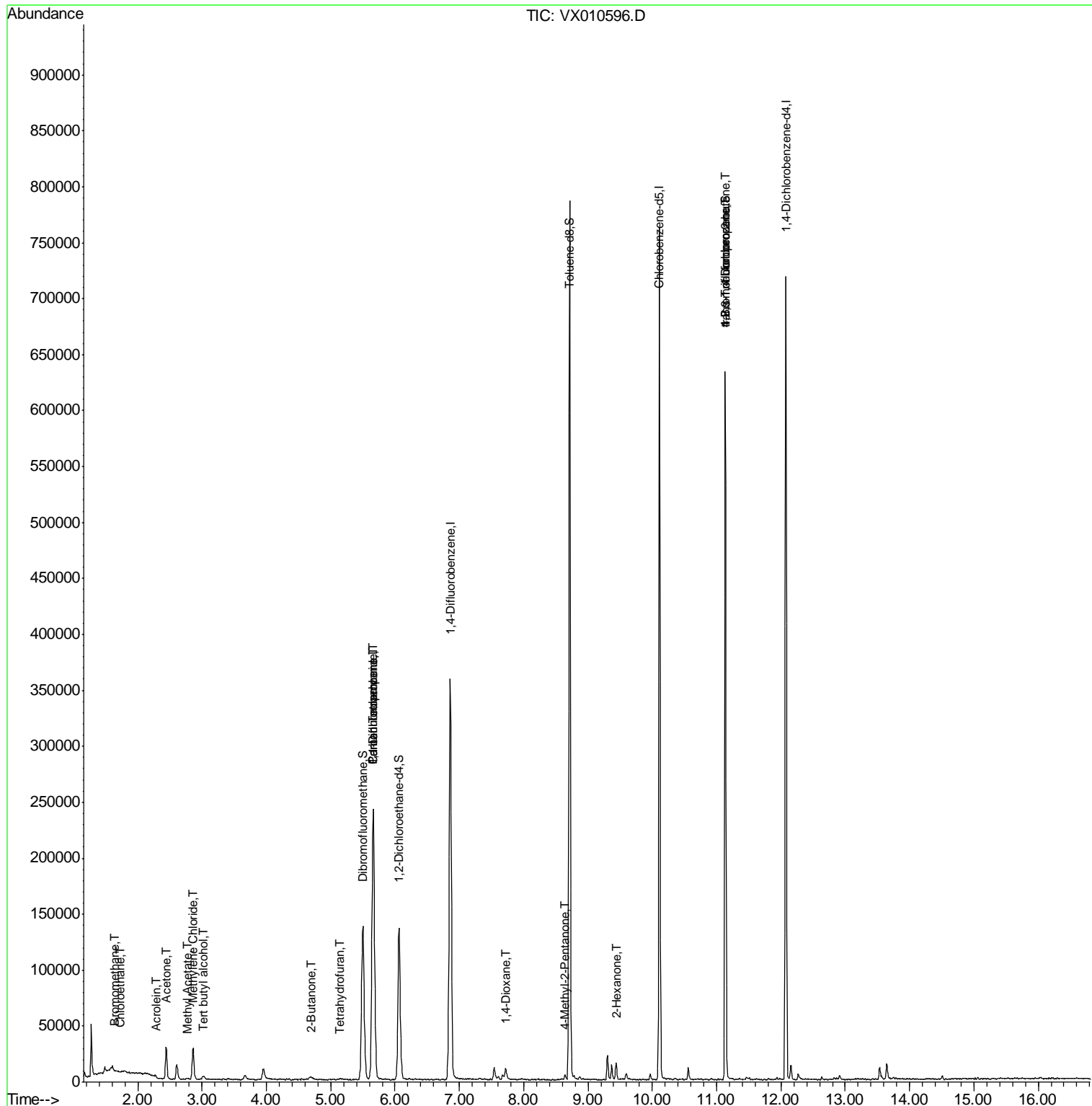
						Qvalue
5) Bromomethane	1.65	94	321	0.293	ug/l #	25
6) Chloroethane	1.73	64	1212	0.915	ug/l #	63
11) Tert butyl alcohol	3.02	59	2445	3.934	ug/l #	74
13) Acrolein	2.29	56	261	0.633	ug/l #	48
16) Acetone	2.44	43	29860	25.084	ug/l	92
18) Methyl Acetate	2.78	43	1118	0.471	ug/l	95
20) Methylene Chloride	2.86	84	14512	5.924	ug/l	95
25) 2-Butanone	4.69	43	1965	1.125	ug/l	95
29) Tetrahydrofuran	5.13	42	448	0.414	ug/l #	50
36) 1,1-Dichloropropene	5.66	75	15657	5.031	ug/l #	47
38) Carbon Tetrachloride	5.67	117	22465	6.667	ug/l #	16
49) 1,4-Dioxane	7.71	88	89	1.255	ug/l #	1
51) 4-Methyl-2-Pentanone	8.64	43	2792	0.824	ug/l	92
59) 2-Hexanone	9.44	43	9547	3.581	ug/l #	22
76) 1,2,3-Trichloropropane	11.13	75	74269	24.980	ug/l #	33
81) trans-1,4-Dichloro-2-buten	11.13	75	74269	58.275	ug/l #	16

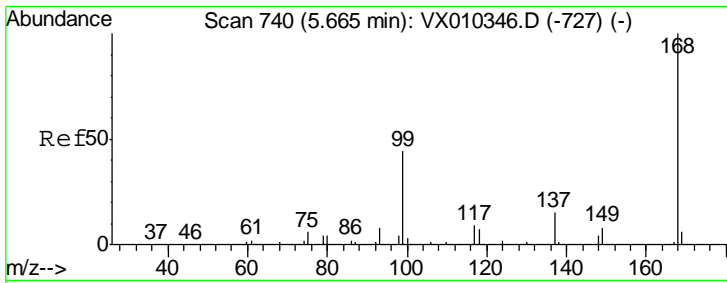
(#) = qualifier out of range (m) = manual integration (+) = signals summed

Data Path : Z:\VOASRV\HPCHEM1\MSVOA X\DATA\VX070119\
 Data File : VX010596.D
 Acq On : 01 Jul 2019 17:18
 Operator : JC/SP
 Sample : K3557-02
 Misc : 5.0mL/MSVOA X/WATER
 ALS Vial : 21 Sample Multiplier: 1

Instrument :
 MSVOA_X
Client Sampled :
 IDW-EW03-CONCRETE

Quant Time: Jul 02 04:53:52 2019
 Quant Method : Z:\VOASRV\HPCHEM1\MSVOA_X\METHOD\82X061919W.M
 Quant Title : SW846 8260
 QLast Update : Thu Jun 20 03:31:56 2019
 Response via : Initial Calibration

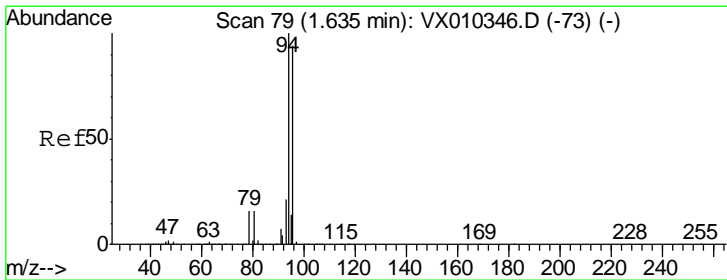
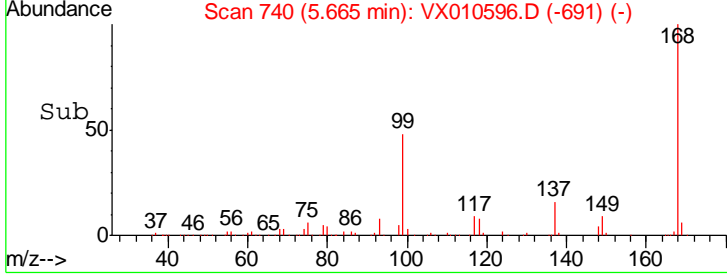
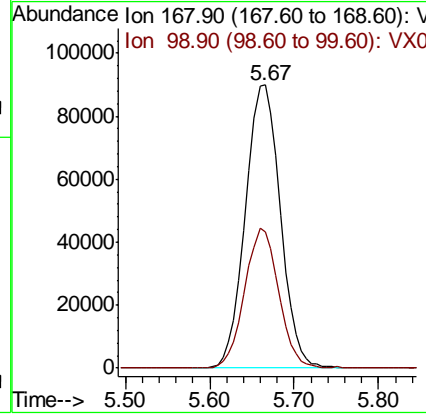
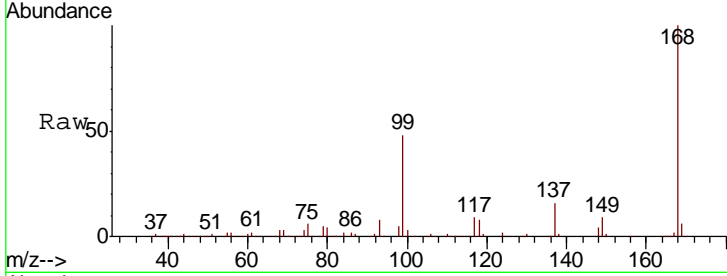




#1
 Pentafluorobenzene
 Concen: 50.000 ug/l
 RT: 5.67 min Scan# 740
 Delta R.T. 0.00 min
 Lab File: VX010596.D
 Acq: 01 Jul 2019 17:18

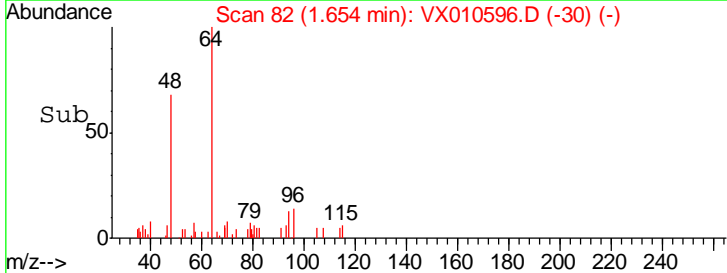
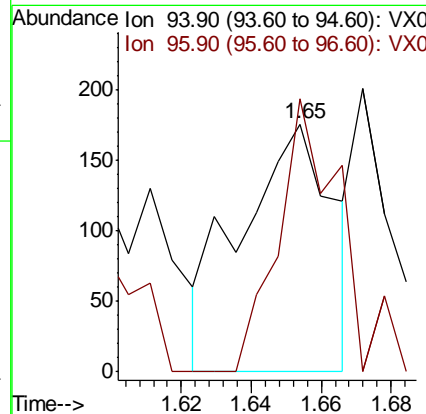
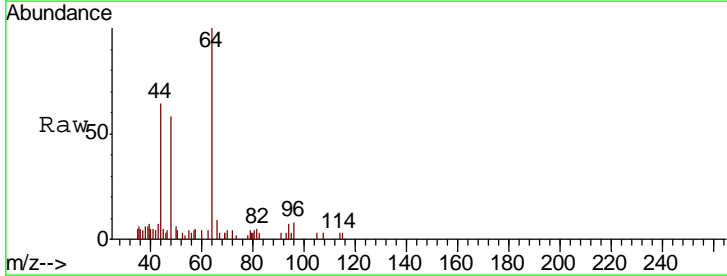
Instrument : MSVOA_X
 ClientSampleId : IDW-EW03-CONCRETE

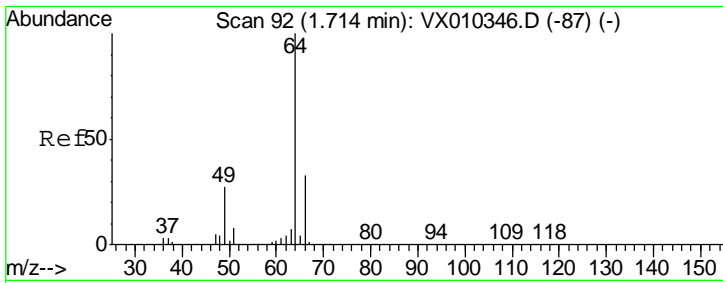
Tgt Ion	Resp	Lower	Upper
168	100		
99	48.1	35.5	53.3



#5
 Bromomethane
 Concen: 0.293 ug/l
 RT: 1.65 min Scan# 82
 Delta R.T. 0.02 min
 Lab File: VX010596.D
 Acq: 01 Jul 2019 17:18

Tgt Ion	Resp	Lower	Upper
94	100		
96	167.2	75.5	113.3#

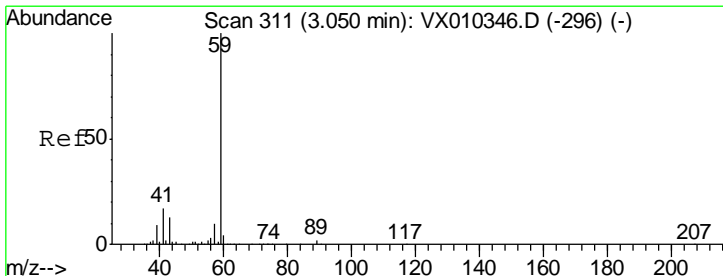
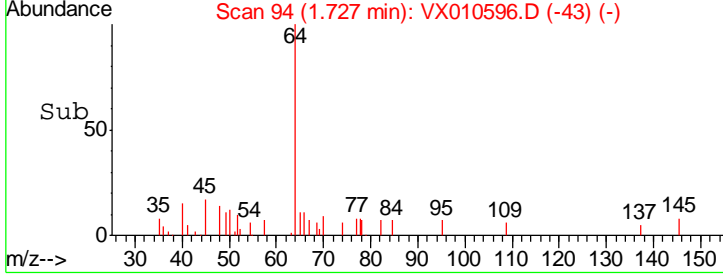
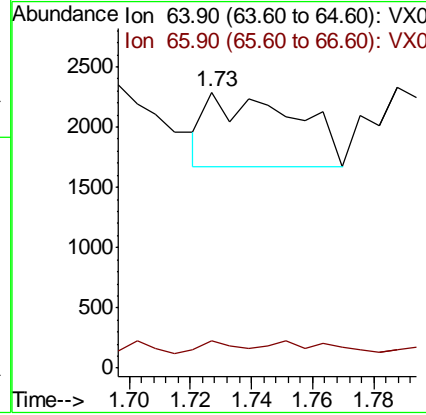
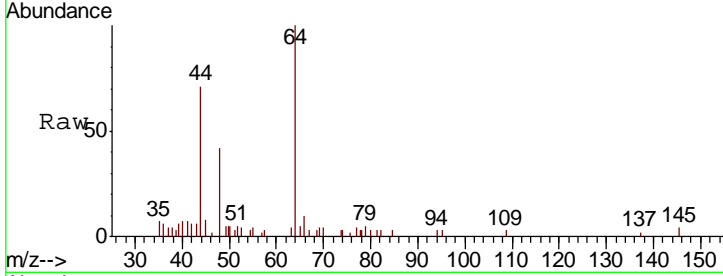




#6
 Chloroethane
 Concen: 0.915 ug/l
 RT: 1.73 min Scan# 94
 Delta R.T. 0.01 min
 Lab File: VX010596.D
 Acq: 01 Jul 2019 17:18

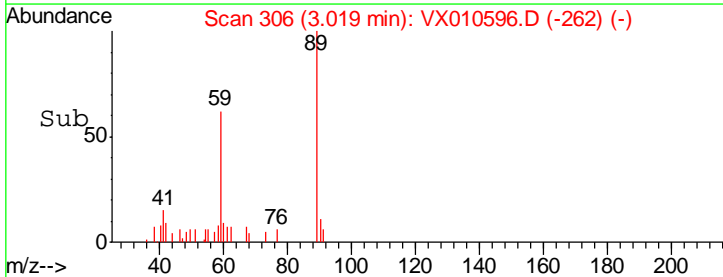
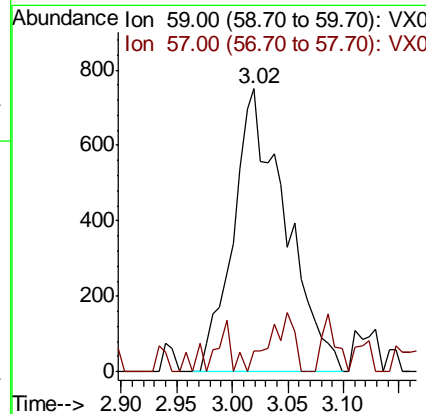
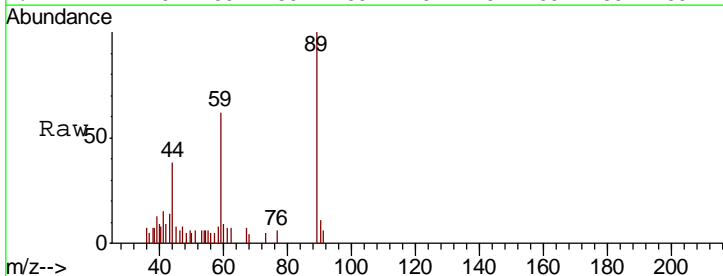
Instrument :
 MSVOA_X
ClientSampled :
 IDW-EW03-CONCRETE

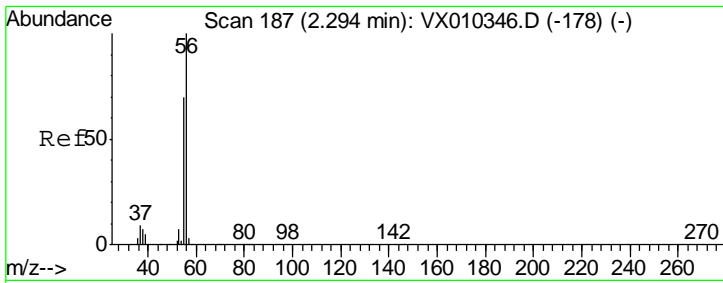
Tgt Ion	Resp	Lower	Upper
64	1212		
66	12.3	26.6	40.0#



#11
 Tert butyl alcohol
 Concen: 3.934 ug/l
 RT: 3.02 min Scan# 306
 Delta R.T. -0.03 min
 Lab File: VX010596.D
 Acq: 01 Jul 2019 17:18

Tgt Ion	Resp	Lower	Upper
59	2445		
57	0.0	7.7	11.5#

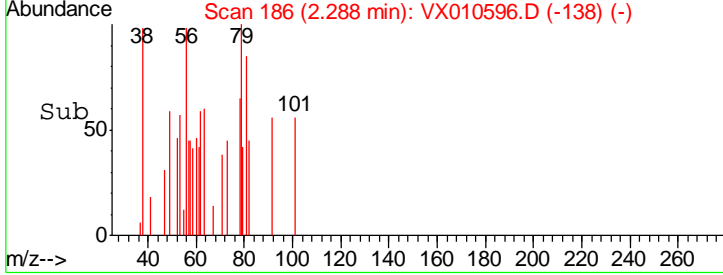
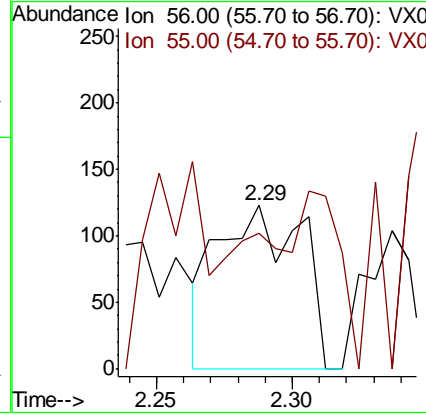
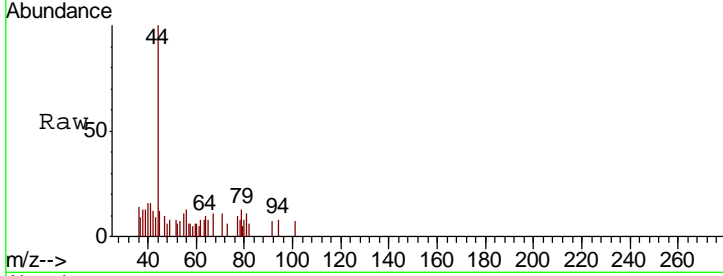




#13
 Acrolein
 Concen: 0.633 ug/l
 RT: 2.29 min Scan# 186
 Delta R.T. -0.01 min
 Lab File: VX010596.D
 Acq: 01 Jul 2019 17:18

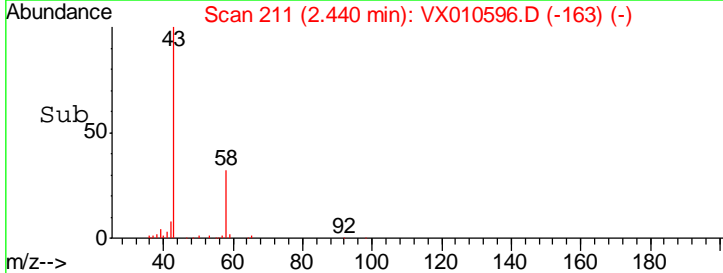
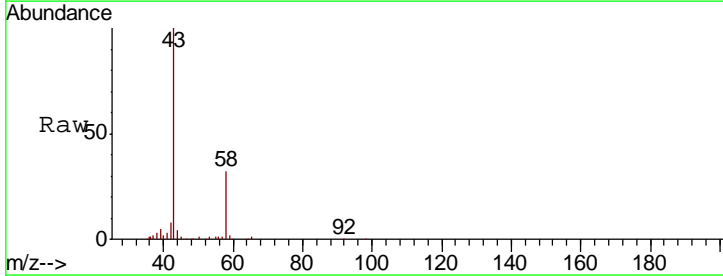
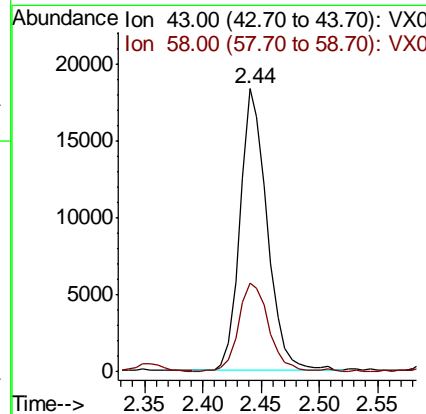
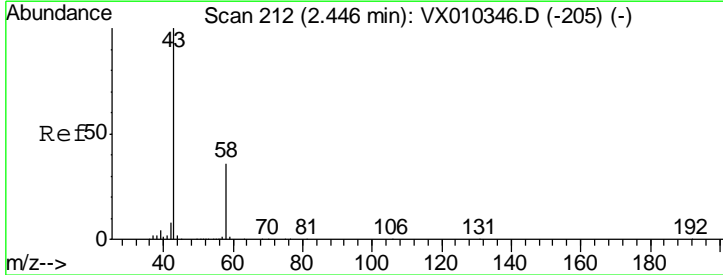
Instrument :
 MSVOA_X
ClientSampled :
 IDW-EW03-CONCRETE

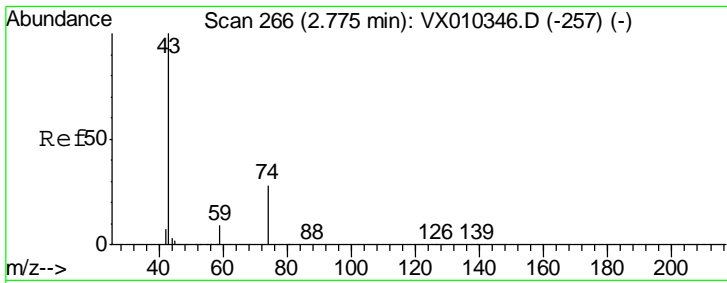
Tgt Ion	Resp	Lower	Upper
56	100		
55	28.4	56.9	85.3#



#16
 Acetone
 Concen: 25.084 ug/l
 RT: 2.44 min Scan# 211
 Delta R.T. -0.01 min
 Lab File: VX010596.D
 Acq: 01 Jul 2019 17:18

Tgt Ion	Resp	Lower	Upper
43	100		
58	31.7	28.9	43.3

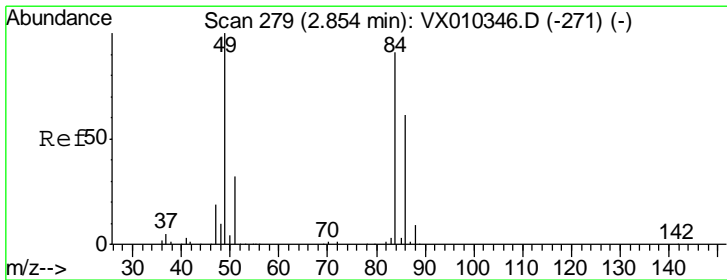
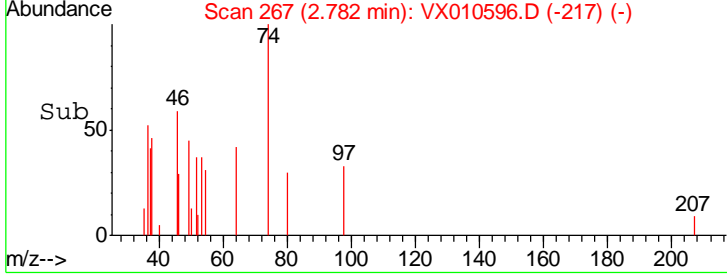
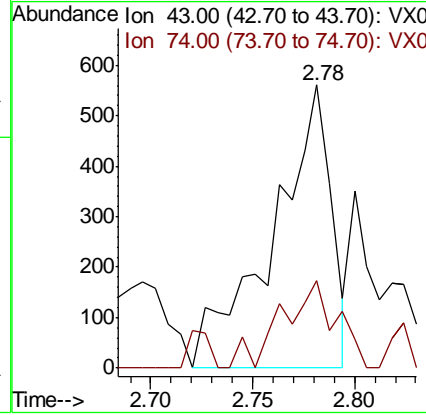
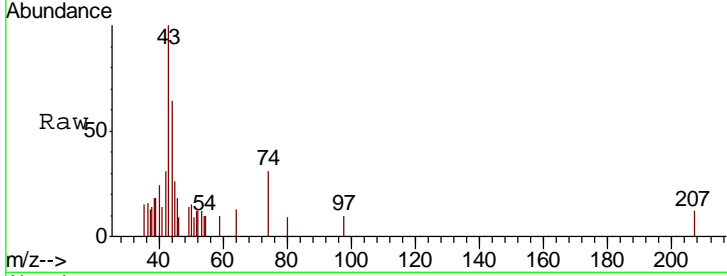




#18
Methyl Acetate
Concen: 0.471 ug/l
RT: 2.78 min Scan# 267
Delta R.T. 0.01 min
Lab File: VX010596.D
Acq: 01 Jul 2019 17:18

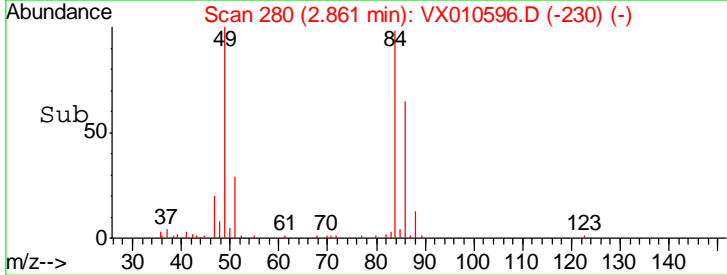
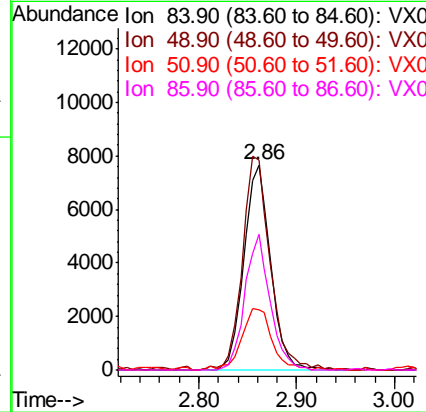
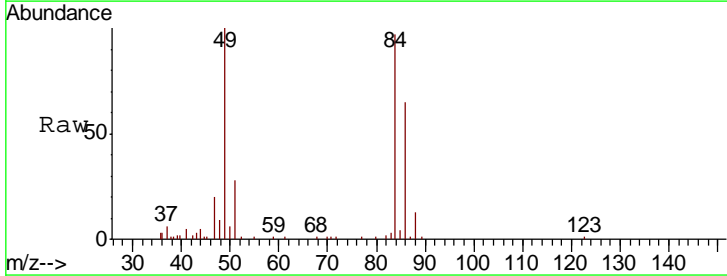
Instrument : MSVOA_X
ClientSampled : IDW-EW03-CONCRETE

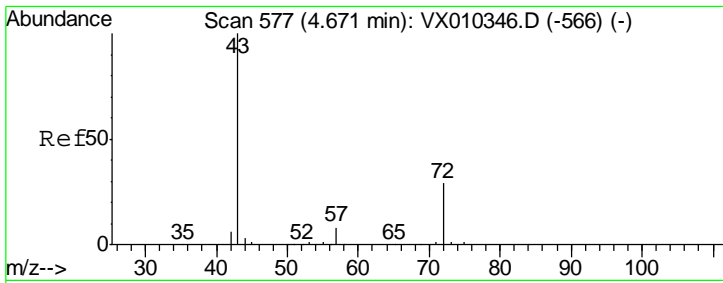
Tgt Ion	Resp	Lower	Upper
43	1118		
74	29.2	21.3	31.9



#20
Methylene Chloride
Concen: 5.924 ug/l
RT: 2.86 min Scan# 280
Delta R.T. 0.01 min
Lab File: VX010596.D
Acq: 01 Jul 2019 17:18

Tgt Ion	Resp	Lower	Upper
84	14512		
49	102.7	87.5	131.3
51	29.3	27.7	41.5
86	66.3	53.4	80.0

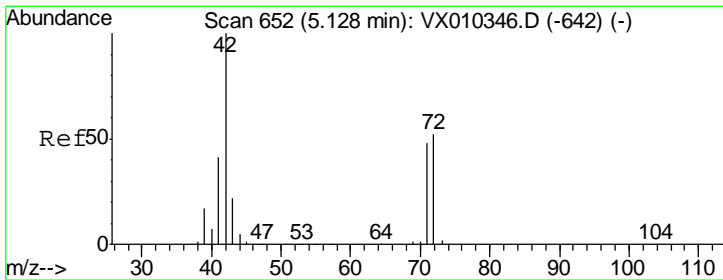
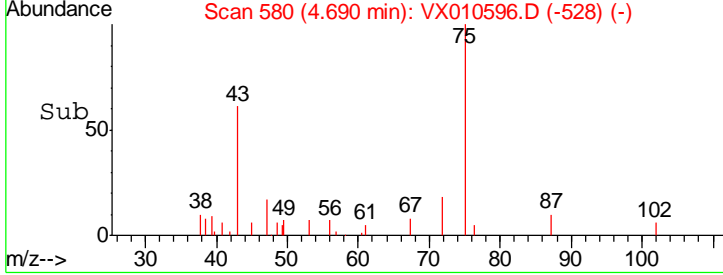
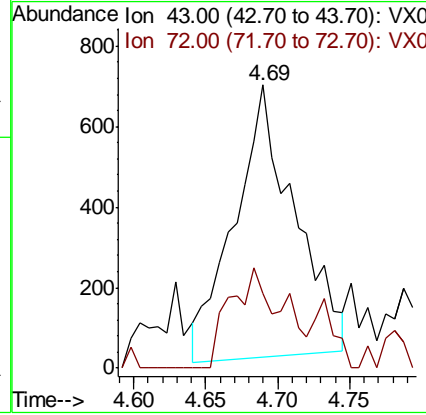
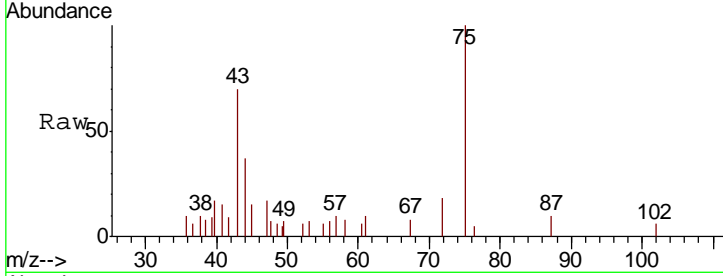




#25
 2-Butanone
 Concen: 1.125 ug/l
 RT: 4.69 min Scan# 580
 Delta R.T. 0.02 min
 Lab File: VX010596.D
 Acq: 01 Jul 2019 17:18

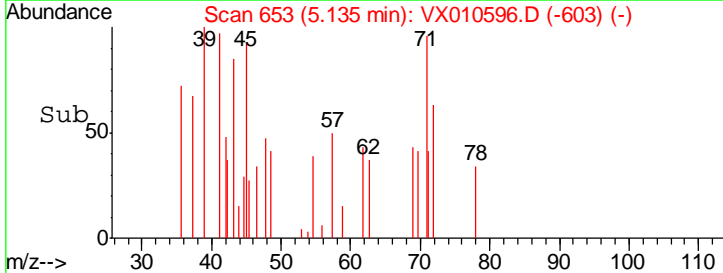
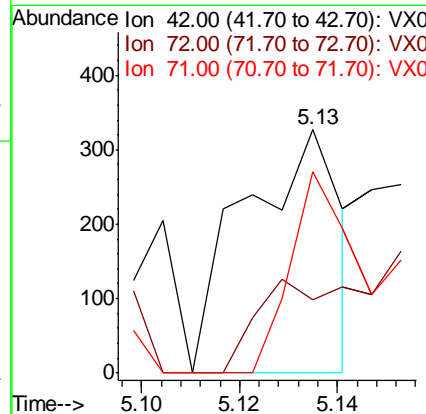
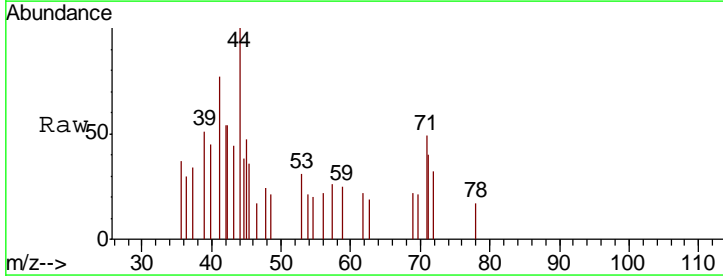
Instrument :
 MSVOA_X
ClientSampled :
 IDW-EW03-CONCRETE

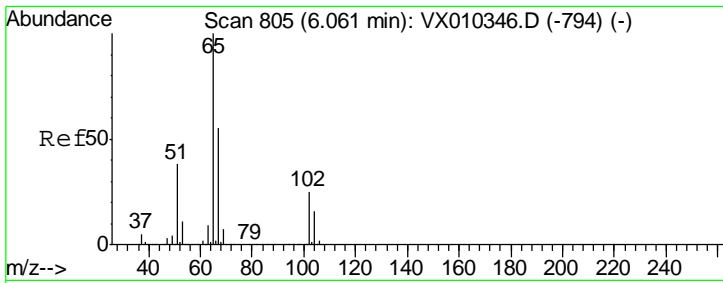
Tgt Ion	Resp	Lower	Upper
43	1965		
72	31.6	23.3	34.9



#29
 Tetrahydrofuran
 Concen: 0.414 ug/l
 RT: 5.13 min Scan# 653
 Delta R.T. 0.01 min
 Lab File: VX010596.D
 Acq: 01 Jul 2019 17:18

Tgt Ion	Resp	Lower	Upper
42	448		
72	76.1	40.6	60.8#
71	90.4	37.8	56.8#

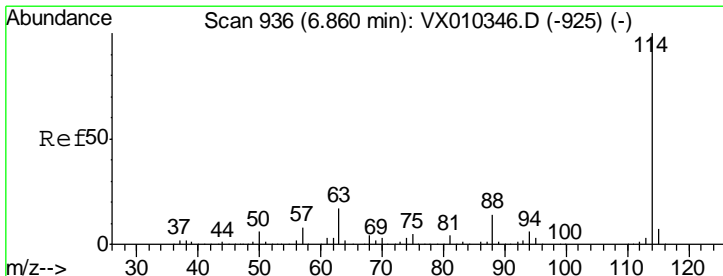
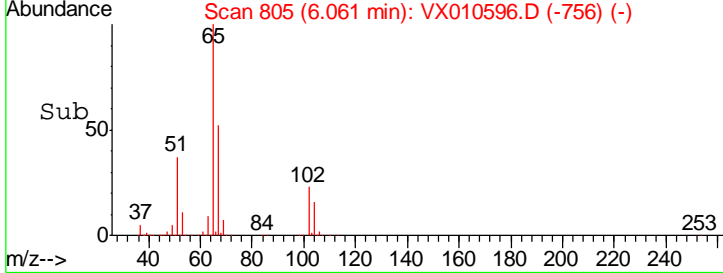
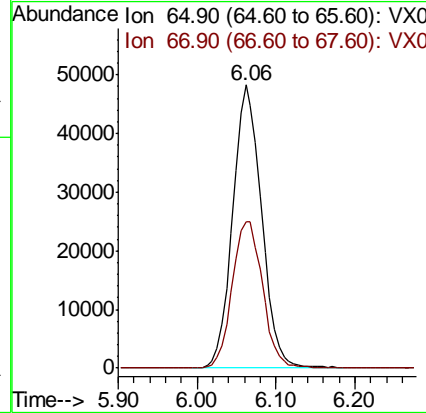
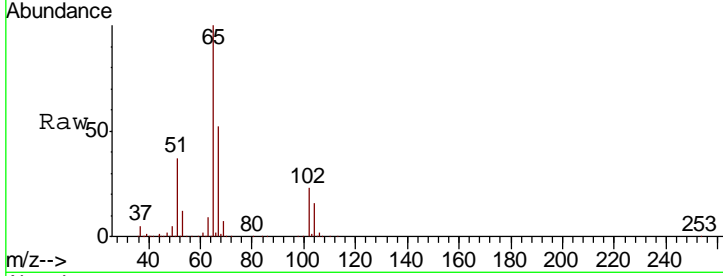




#33
 1,2-Dichloroethane-d4
 Concen: 51.652 ug/l
 RT: 6.06 min Scan# 805
 Delta R.T. 0.00 min
 Lab File: VX010596.D
 Acq: 01 Jul 2019 17:18

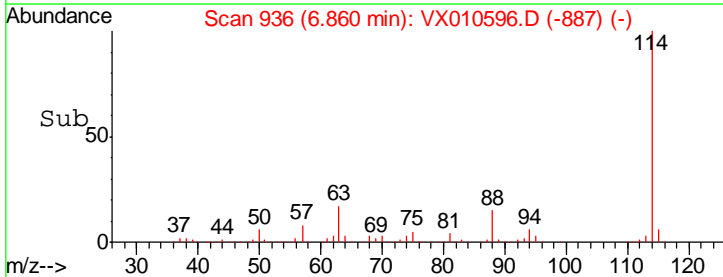
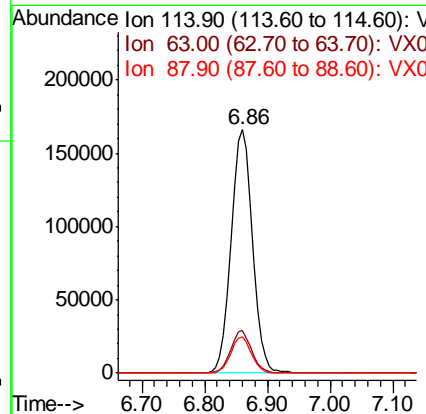
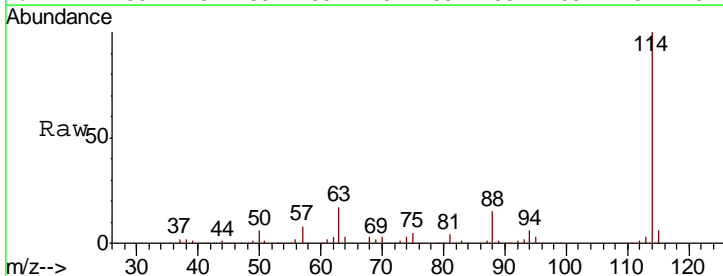
Instrument :
 MSVOA_X
ClientSampled :
 IDW-EW03-CONCRETE

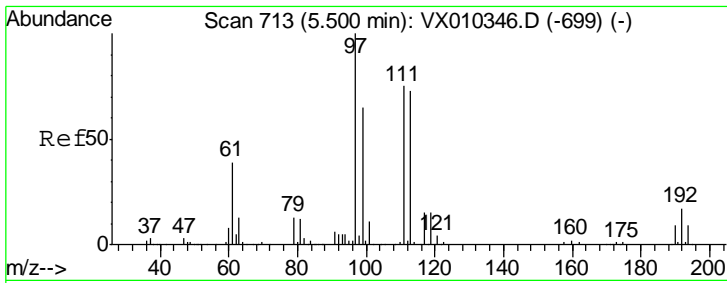
Tgt Ion	Resp	Lower	Upper
65	122684		
67	54.7	0.0	110.2



#34
 1,4-Difluorobenzene
 Concen: 50.000 ug/l
 RT: 6.86 min Scan# 936
 Delta R.T. 0.00 min
 Lab File: VX010596.D
 Acq: 01 Jul 2019 17:18

Tgt Ion	Resp	Lower	Upper
114	391603		
63	17.4	0.0	33.8
88	14.7	0.0	27.6

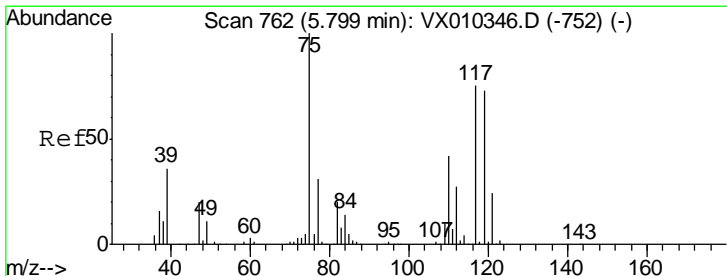
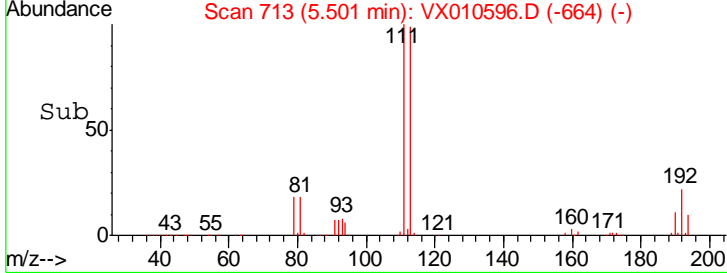
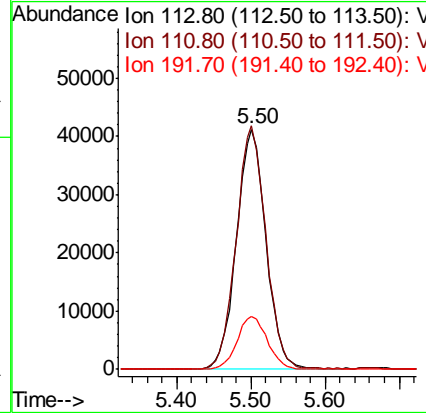
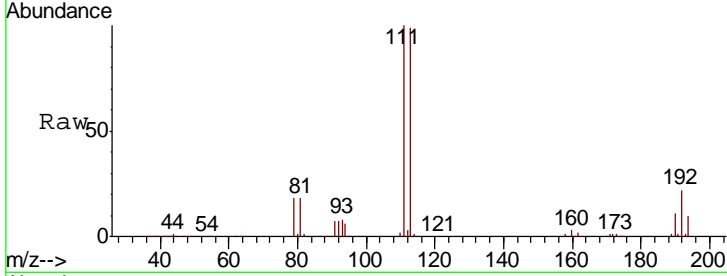




#35
 Dibromofluoromethane
 Concen: 47.871 ug/l
 RT: 5.50 min Scan# 713
 Delta R.T. 0.00 min
 Lab File: VX010596.D
 Acq: 01 Jul 2019 17:18

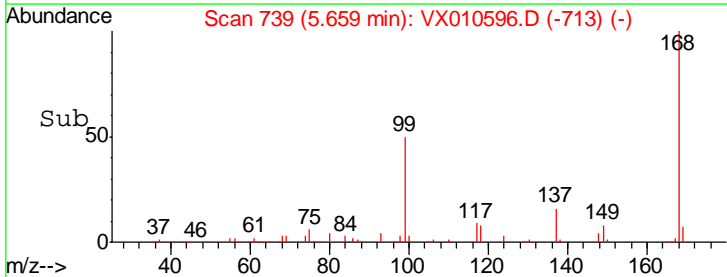
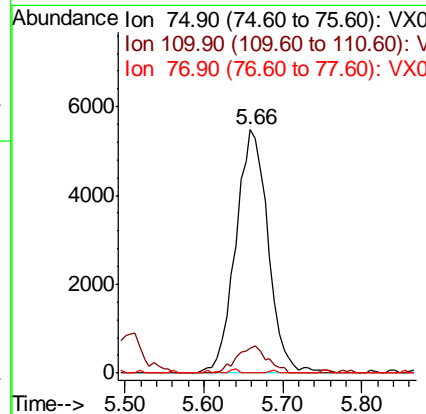
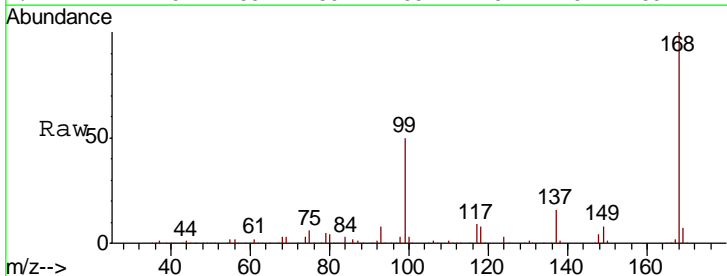
Instrument :
 MSVOA_X
ClientSampled :
 IDW-EW03-CONCRETE

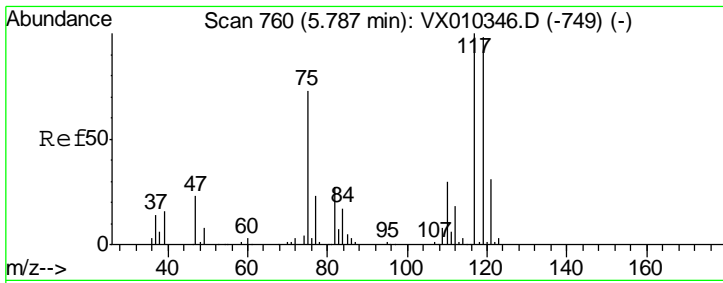
Tgt Ion	Resp	Lower	Upper
113	114698		
113	100		
111	101.7	81.2	121.8
192	22.6	18.6	27.8



#36
 1,1-Dichloropropene
 Concen: 5.031 ug/l
 RT: 5.66 min Scan# 739
 Delta R.T. -0.14 min
 Lab File: VX010596.D
 Acq: 01 Jul 2019 17:18

Tgt Ion	Resp	Lower	Upper
75	15657		
75	100		
110	10.5	20.8	62.2#
77	0.0	25.4	38.0#

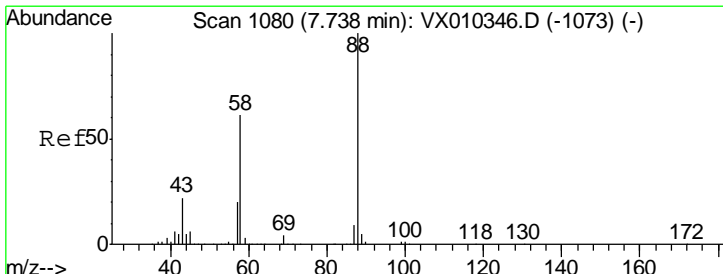
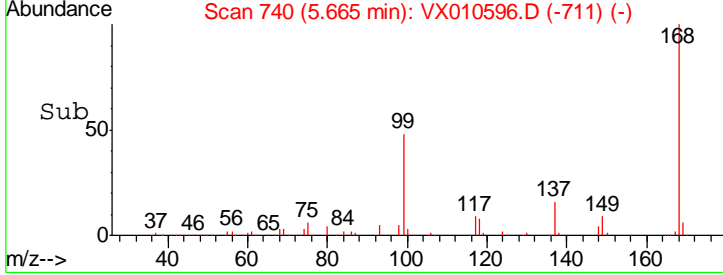
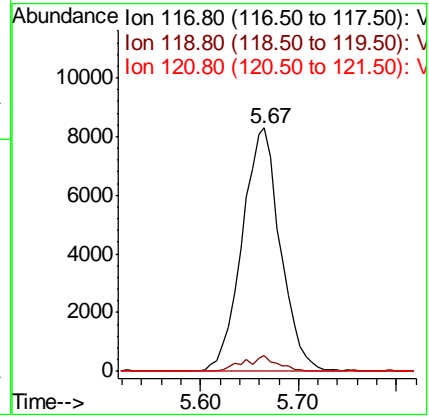
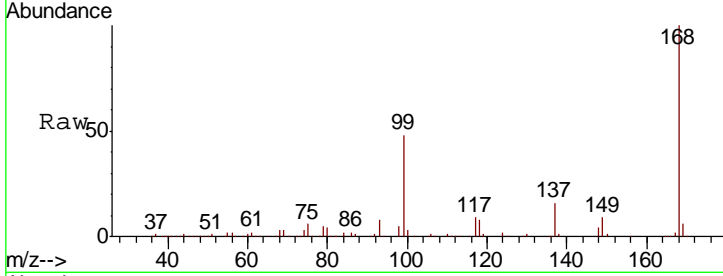




#38
 Carbon Tetrachloride
 Concen: 6.667 ug/l
 RT: 5.67 min Scan# 740
 Delta R.T. -0.12 min
 Lab File: VX010596.D
 Acq: 01 Jul 2019 17:18

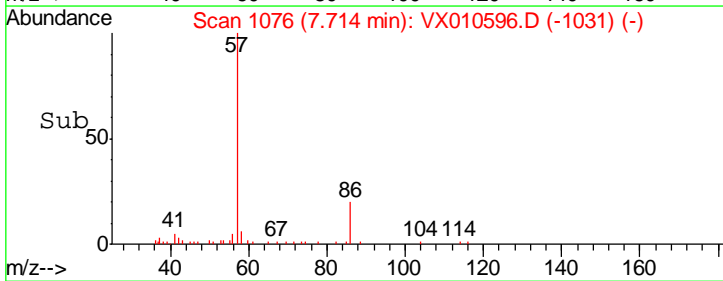
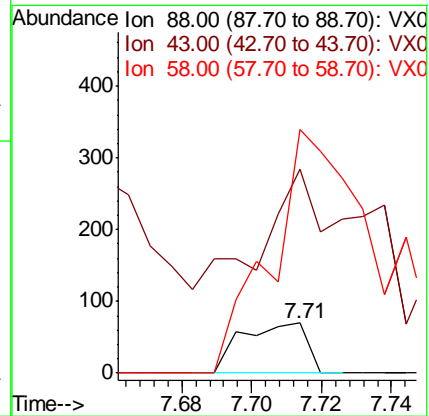
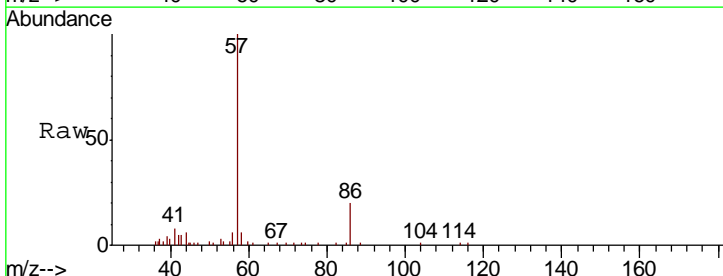
Instrument :
 MSVOA_X
ClientSampled :
 IDW-EW03-CONCRETE

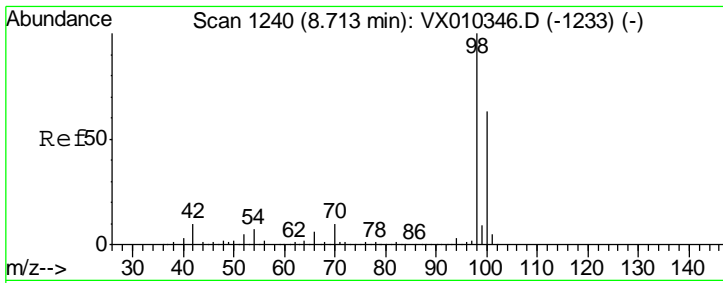
Tgt Ion	Resp	Lower	Upper
117	100		
119	6.3	78.2	117.4#
121	0.0	24.7	37.1#



#49
 1,4-Dioxane
 Concen: 1.255 ug/l
 RT: 7.71 min Scan# 1076
 Delta R.T. -0.02 min
 Lab File: VX010596.D
 Acq: 01 Jul 2019 17:18

Tgt Ion	Resp	Lower	Upper
88	100		
43	0.0	20.2	30.2#
58	786.5	49.5	74.3#

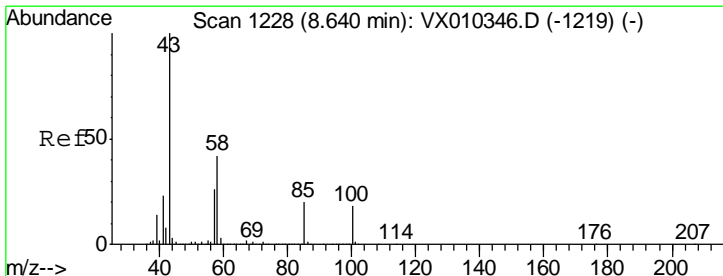
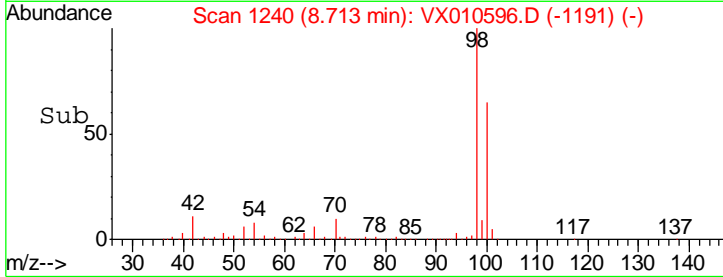
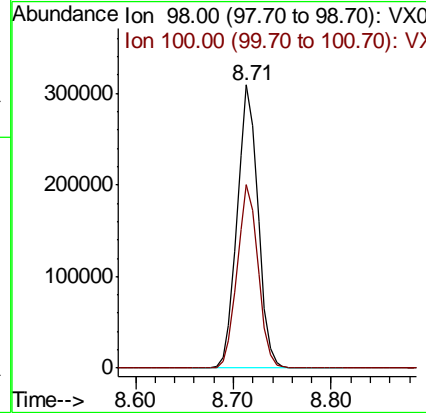
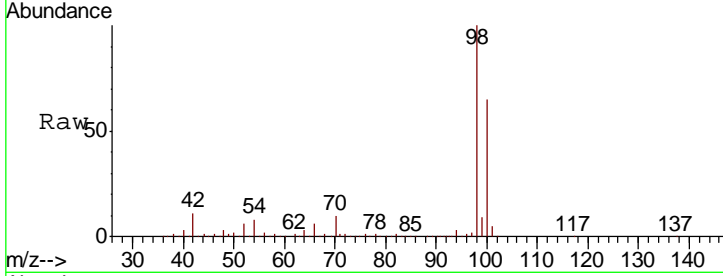




#50
 Toluene-d8
 Concen: 50.065 ug/l
 RT: 8.71 min Scan# 1240
 Delta R.T. 0.00 min
 Lab File: VX010596.D
 Acq: 01 Jul 2019 17:18

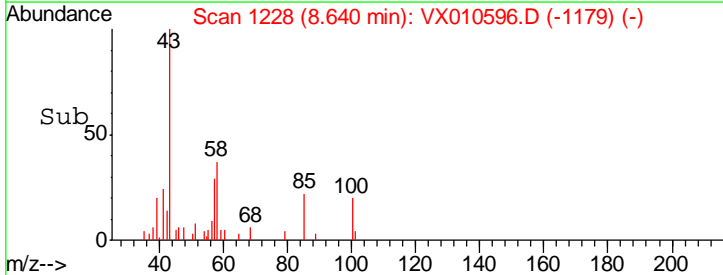
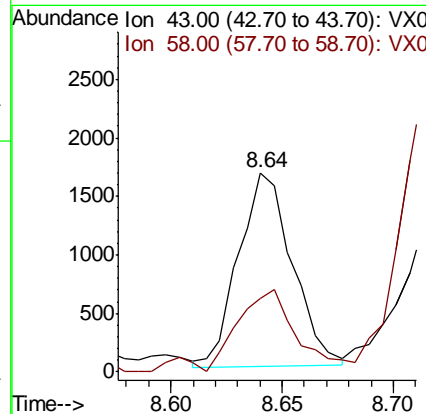
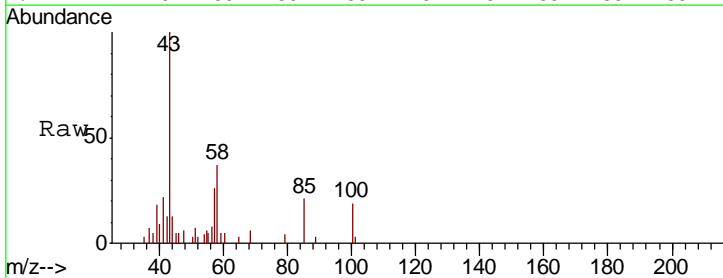
Instrument :
 MSVOA_X
ClientSampled :
 IDW-EW03-CONCRETE

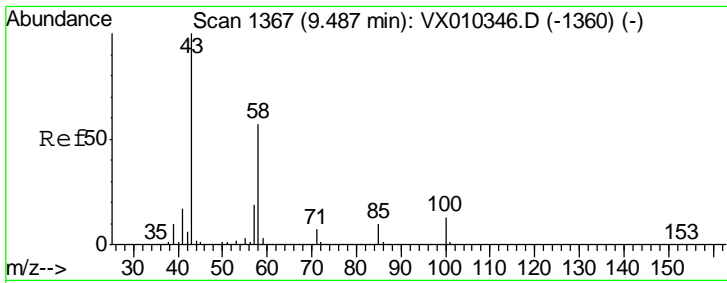
Tgt Ion	Resp	Lower	Upper
98	458925		
100	64.9	51.6	77.4



#51
 4-Methyl-2-Pentanone
 Concen: 0.824 ug/l
 RT: 8.64 min Scan# 1228
 Delta R.T. 0.00 min
 Lab File: VX010596.D
 Acq: 01 Jul 2019 17:18

Tgt Ion	Resp	Lower	Upper
43	2792		
58	46.8	33.5	50.3

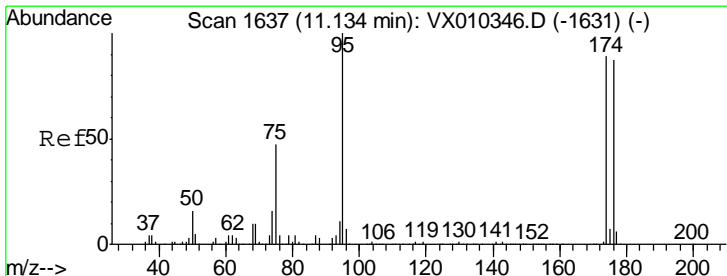
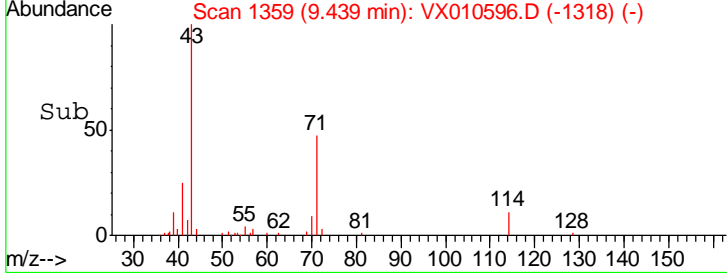
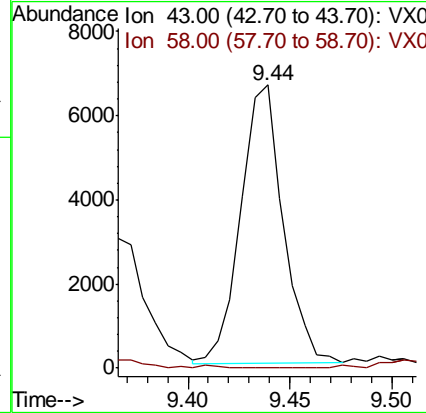
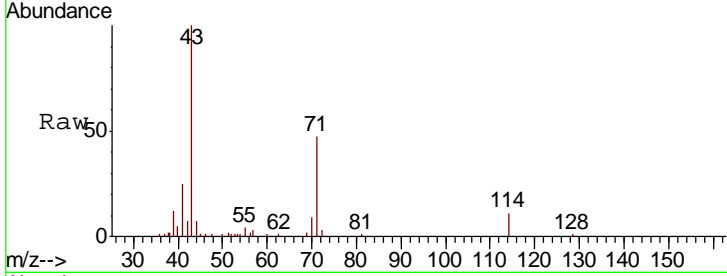




#59
 2-Hexanone
 Concen: 3.581 ug/l
 RT: 9.44 min Scan# 1359
 Delta R.T. -0.05 min
 Lab File: VX010596.D
 Acq: 01 Jul 2019 17:18

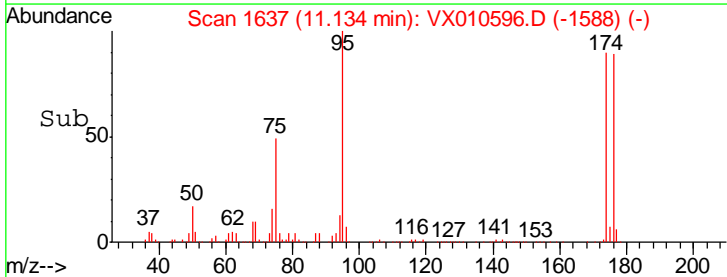
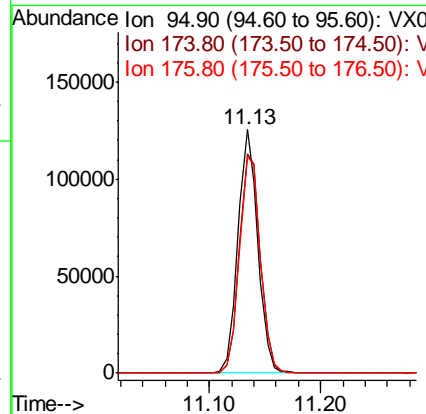
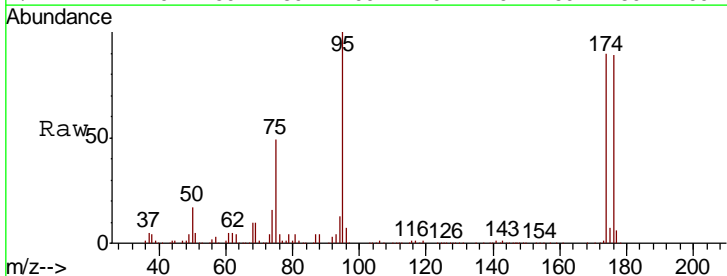
Instrument :
 MSVOA_X
ClientSampled :
 IDW-EW03-CONCRETE

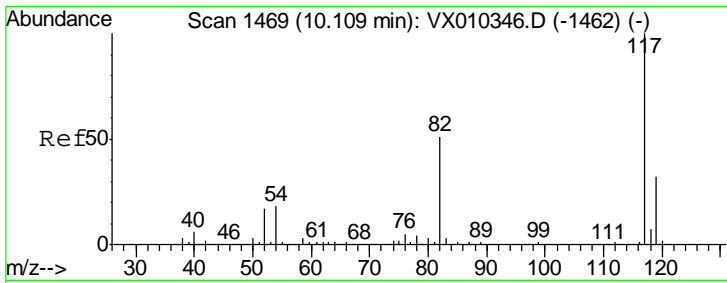
Tgt Ion	Resp	Lower	Upper
43	100		
58	0.0	29.0	87.1#



#62
 4-Bromofluorobenzene
 Concen: 46.645 ug/l
 RT: 11.13 min Scan# 1637
 Delta R.T. 0.00 min
 Lab File: VX010596.D
 Acq: 01 Jul 2019 17:18

Tgt Ion	Resp	Lower	Upper
95	100		
174	95.2	0.0	187.6
176	93.8	0.0	184.0

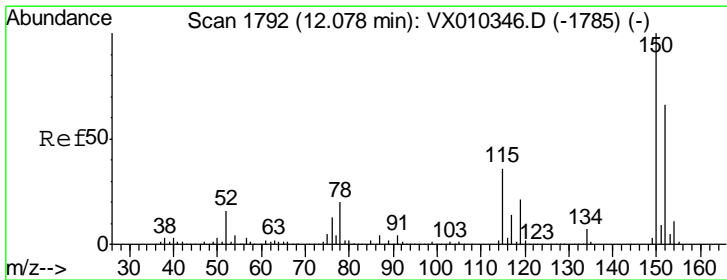
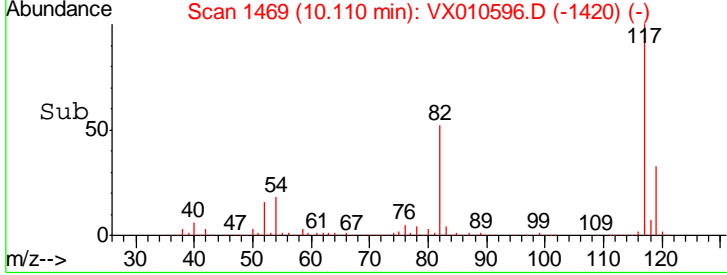
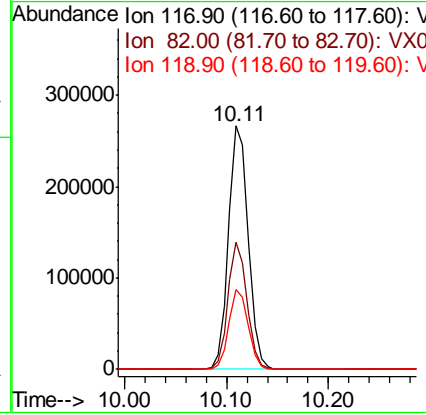
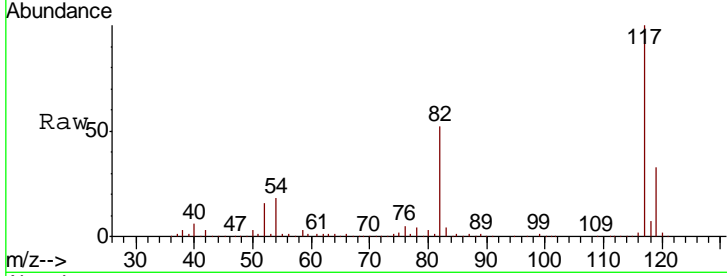




#63
 Chlorobenzene-d5
 Concen: 50.000 ug/l
 RT: 10.11 min Scan# 1469
 Delta R.T. 0.00 min
 Lab File: VX010596.D
 Acq: 01 Jul 2019 17:18

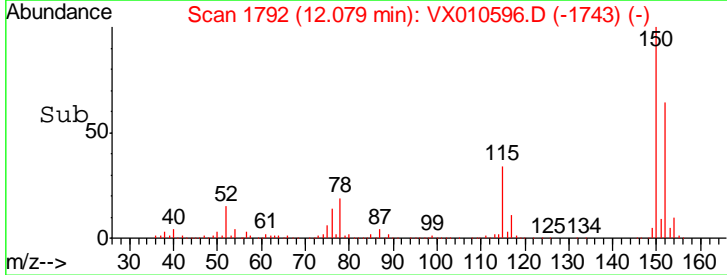
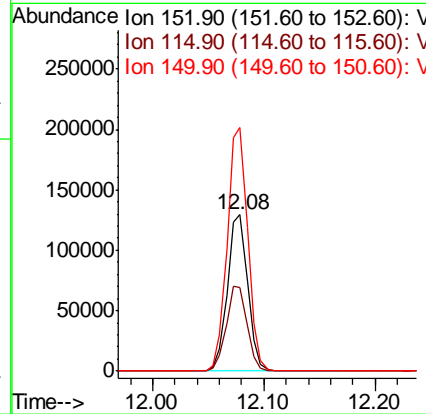
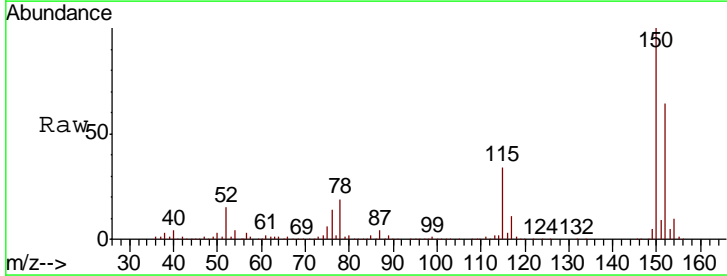
Instrument : MSVOA_X
 ClientSampled : IDW-EW03-CONCRETE

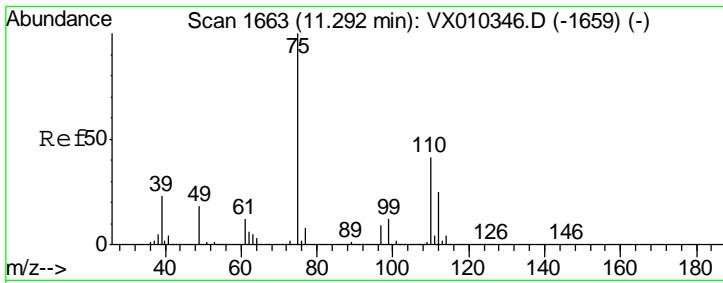
Tgt Ion	Resp	Lower	Upper
117	357553		
82	52.1	41.2	61.8
119	32.6	25.5	38.3



#72
 1,4-Dichlorobenzene-d4
 Concen: 50.000 ug/l
 RT: 12.08 min Scan# 1792
 Delta R.T. 0.00 min
 Lab File: VX010596.D
 Acq: 01 Jul 2019 17:18

Tgt Ion	Resp	Lower	Upper
152	163159		
115	55.5	38.6	115.7
150	157.3	0.0	347.4

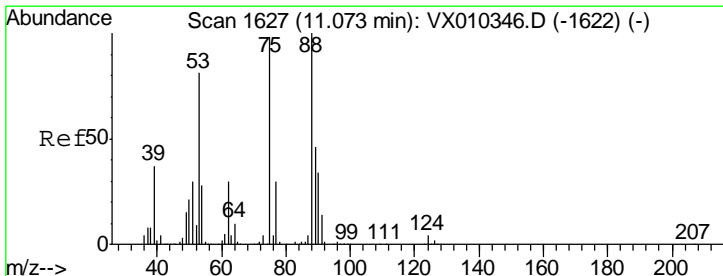
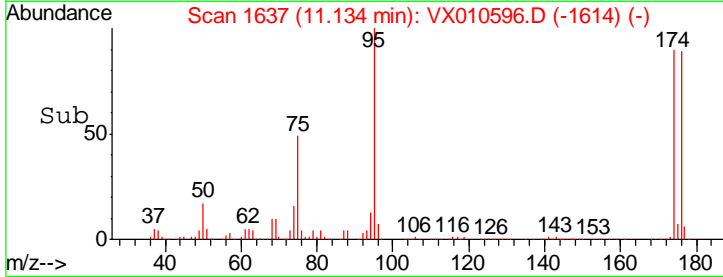
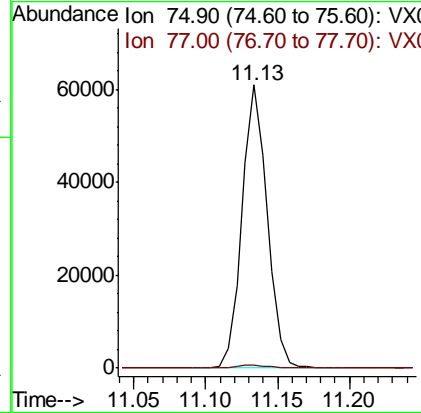
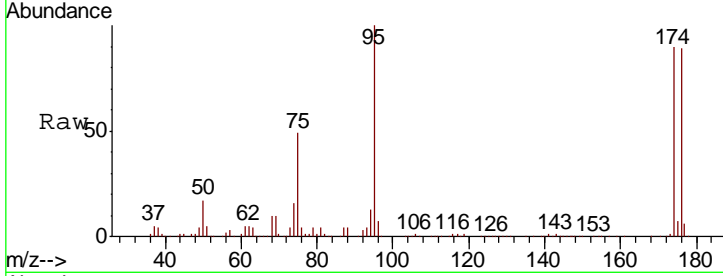




#76
 1,2,3-Trichloropropane
 Concen: 24.980 ug/l
 RT: 11.13 min Scan# 1637
 Delta R.T. -0.16 min
 Lab File: VX010596.D
 Acq: 01 Jul 2019 17:18

Instrument : MSVOA_X
 ClientSampled : IDW-EW03-CONCRETE

Tgt Ion: 75 Resp: 74269
 Ion Ratio Lower Upper
 75 100
 77 1.3 22.6 67.8#



#81
 trans-1,4-Dichloro-2-butene
 Concen: 58.275 ug/l
 RT: 11.13 min Scan# 1637
 Delta R.T. 0.06 min
 Lab File: VX010596.D
 Acq: 01 Jul 2019 17:18

Tgt Ion: 75 Resp: 74269
 Ion Ratio Lower Upper
 75 100
 53 0.0 66.1 99.1#
 89 0.2 37.8 56.6#

