

Data Path : Z:\VOASRV\HPCHEM1\MSVOA X\DATA\VX070120\
 Data File : VX017126.D
 Acq On : 02 Jul 2020 02:38
 Operator : JC/SP
 Sample : L3159-13 100X
 Misc : 5.0mL/MSVOA X/WATER
 ALS Vial : 44 Sample Multiplier: 1

Instrument :
 MSVOA_X
 ClientSampleId :
 47BR-20200629

Integration Parameters: RTEINT.P
 Integrator: RTE
 Smoothing : ON Filtering: 5
 Sampling : 1 Min Area: 3 % of largest Peak
 Start Thrs: 0.2 Max Peaks: 100
 Stop Thrs : 0 Peak Location: TOP

If leading or trailing edge < 100 prefer < Baseline drop else tangent >
 Peak separation: 5

Method : Z:\VOASRV\HPCHEM1\MSVOA_X\METHOD\82X062920W.M
 Title : SW846 8260

Signal : TIC

peak #	R.T. min	first scan	max scan	last scan	PK TY	peak height	corr. area	corr. % max.	% of total
1	4.654	573	585	595	rBV	10671	37168	3.27%	0.578%
2	5.470	706	719	732	rBV	137861	394154	34.70%	6.126%
3	5.629	734	745	758	rVV	219024	607206	53.46%	9.437%
4	6.031	800	811	824	rBV2	142474	379119	33.38%	5.892%
5	6.830	932	942	957	rBV	346553	822065	72.38%	12.777%
6	8.695	1241	1248	1259	rBV	736716	1128880	99.39%	17.545%
7	10.098	1471	1478	1485	rBV	782600	1060050	93.33%	16.475%
8	11.122	1640	1646	1655	rBV	697827	869748	76.58%	13.518%
9	12.061	1795	1800	1808	rBV	948892	1135782	100.00%	17.652%

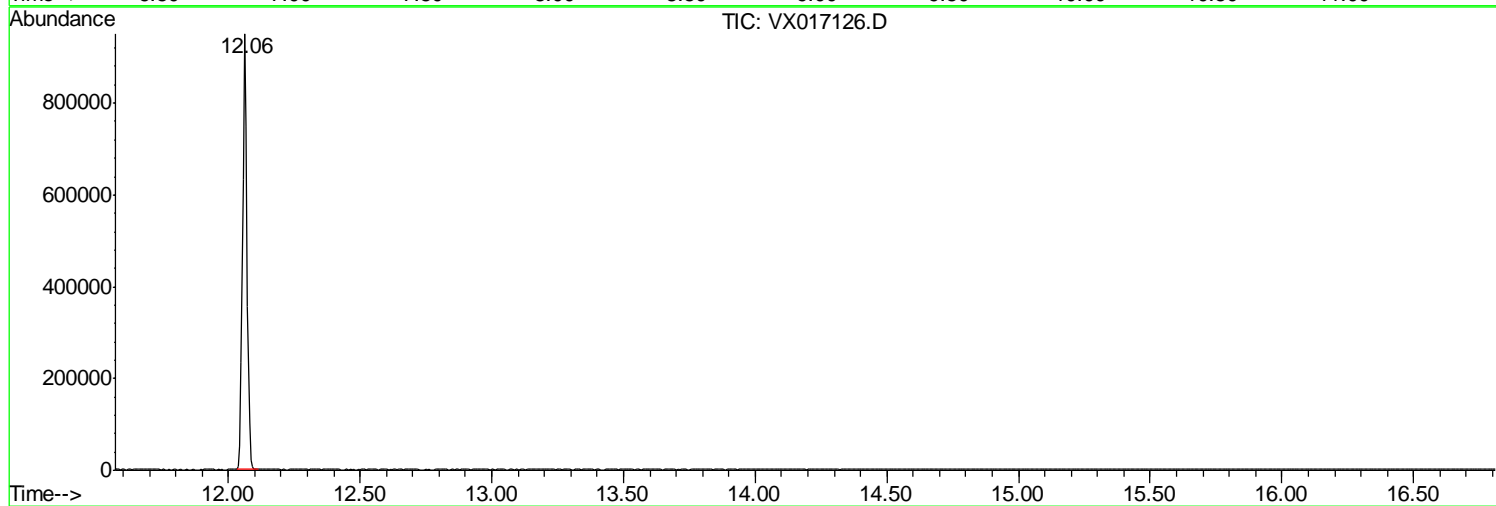
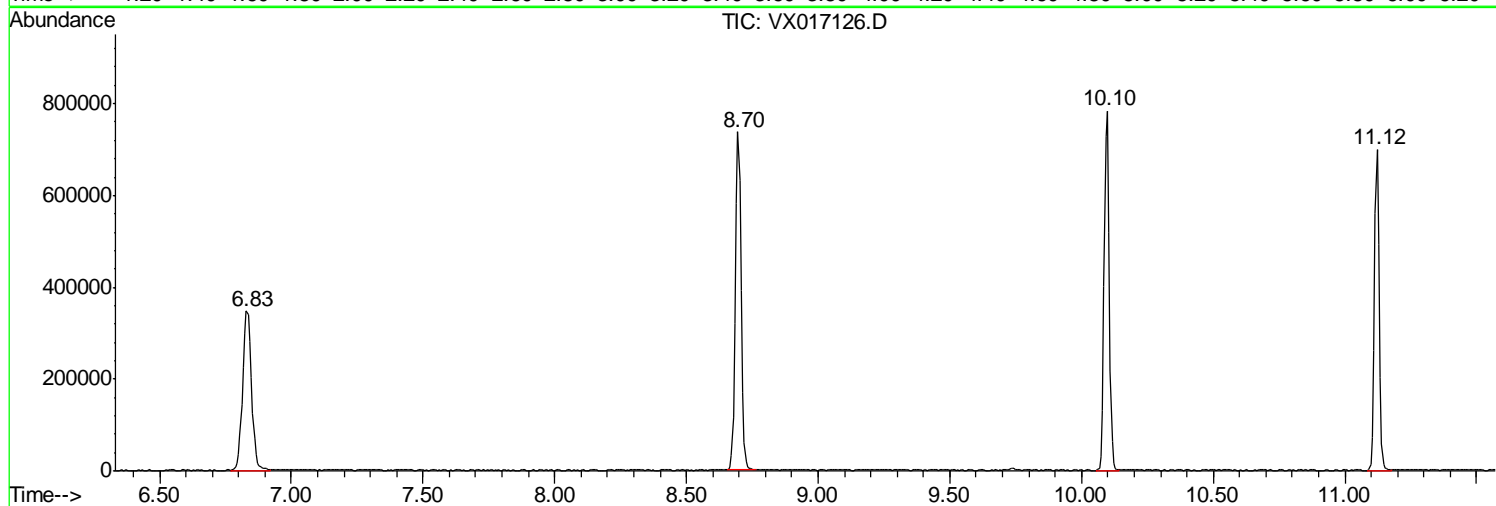
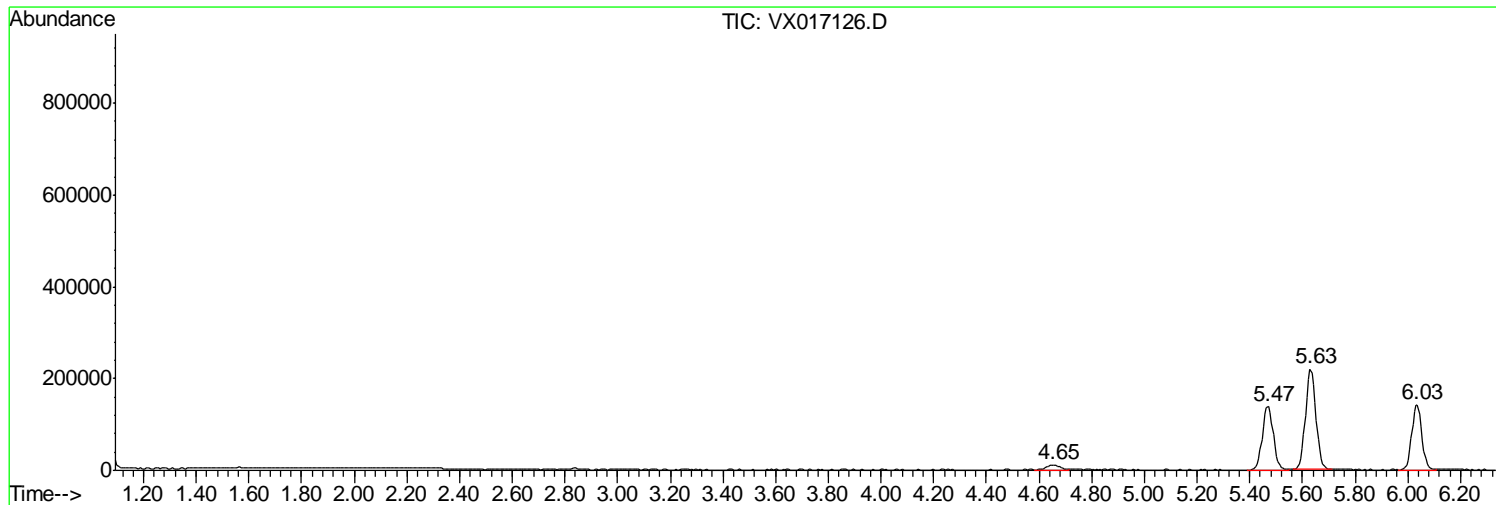
Sum of corrected areas: 6434172

Data Path : Z:\VOASRV\HPCHEM1\MSVOA X\DATA\VX070120\
Data File : VX017126.D
Acq On : 02 Jul 2020 02:38
Operator : JC/SP
Sample : L3159-13 100X
Misc : 5.0mL/MSVOA X/WATER
ALS Vial : 44 Sample Multiplier: 1

Instrument :
MSVOA_X
ClientSampled :
47BR-20200629

Quant Method : Z:\VOASRV\HPCHEM1\MSVOA_X\METHOD\82X062920W.M
Quant Title : SW846 8260

TIC Library : C:\DATABASE\NIST11.L
TIC Integration Parameters: LSCINT.P



Data Path : Z:\VOASRV\HPCHEM1\MSVOA_X\DATA\VX070120\
Data File : VX017126.D
Acq On : 02 Jul 2020 02:38
Operator : JC/SP
Sample : L3159-13 100X
Misc : 5.0mL/MSVOA_X/WATER
ALS Vial : 44 Sample Multiplier: 1

Instrument :
MSVOA_X
ClientSampleId :
47BR-20200629

Quant Method : Z:\VOASRV\HPCHEM1\MSVOA_X\METHOD\82X062920W.M
Quant Title : SW846 8260

TIC Library : C:\DATABASE\NIST11.L
TIC Integration Parameters: LSCINT.P

No Library Search Compounds Detected

Data Path : Z:\VOASRV\HPCHEM1\MSVOA_X\DATA\VX070120\
Data File : VX017126.D
Acq On : 02 Jul 2020 02:38
Operator : JC/SP
Sample : L3159-13 100X
Misc : 5.0mL/MSVOA_X/WATER
ALS Vial : 44 Sample Multiplier: 1

Instrument :
MSVOA_X
ClientSampleId :
47BR-20200629

Quant Method : Z:\VOASRV\HPCHEM1\MSVOA_X\METHOD\82X062920W.M
Quant Title : SW846 8260

TIC Library : C:\DATABASE\NIST11.L
TIC Integration Parameters: LSCINT.P

TIC Top Hit name	RT	EstConc	Units	Response	--Internal Standard--			
					#	RT	Resp	Conc
