

Data Path : Z:\VOASRV\HPCHEM1\MSVOA X\DATA\VX070120\
 Data File : VX017136.D
 Acq On : 02 Jul 2020 06:25
 Operator : JC/SP
 Sample : L3159-23 100X
 Misc : 5.0mL/MSVOA X/WATER
 ALS Vial : 54 Sample Multiplier: 1

Instrument :
 MSVOA_X
 ClientSampleId :
 64BR-20200629

Integration Parameters: RTEINT.P
 Integrator: RTE
 Smoothing : ON Filtering: 5
 Sampling : 1 Min Area: 3 % of largest Peak
 Start Thrs: 0.2 Max Peaks: 100
 Stop Thrs : 0 Peak Location: TOP

If leading or trailing edge < 100 prefer < Baseline drop else tangent >
 Peak separation: 5

Method : Z:\VOASRV\HPCHEM1\MSVOA_X\METHOD\82X062920W.M
 Title : SW846 8260

Signal : TIC

peak #	R.T. min	first scan	max scan	last scan	PK TY	peak height	corr. area	corr. % max.	% of total
1	4.648	571	584	594	rBV	13140	45974	3.95%	0.705%
2	5.471	704	719	731	rBV	138215	396855	34.09%	6.087%
3	5.629	731	745	762	rVB	218376	609603	52.37%	9.350%
4	6.032	798	811	825	rBV	145133	384017	32.99%	5.890%
5	6.830	932	942	957	rBV	340615	822904	70.69%	12.621%
6	8.696	1241	1248	1262	rBV	750849	1138246	97.78%	17.458%
7	10.098	1471	1478	1486	rBV	799948	1074391	92.29%	16.479%
8	11.122	1640	1646	1658	rBV	721390	883833	75.92%	13.556%
9	12.061	1794	1800	1811	rBV	953898	1164090	100.00%	17.854%

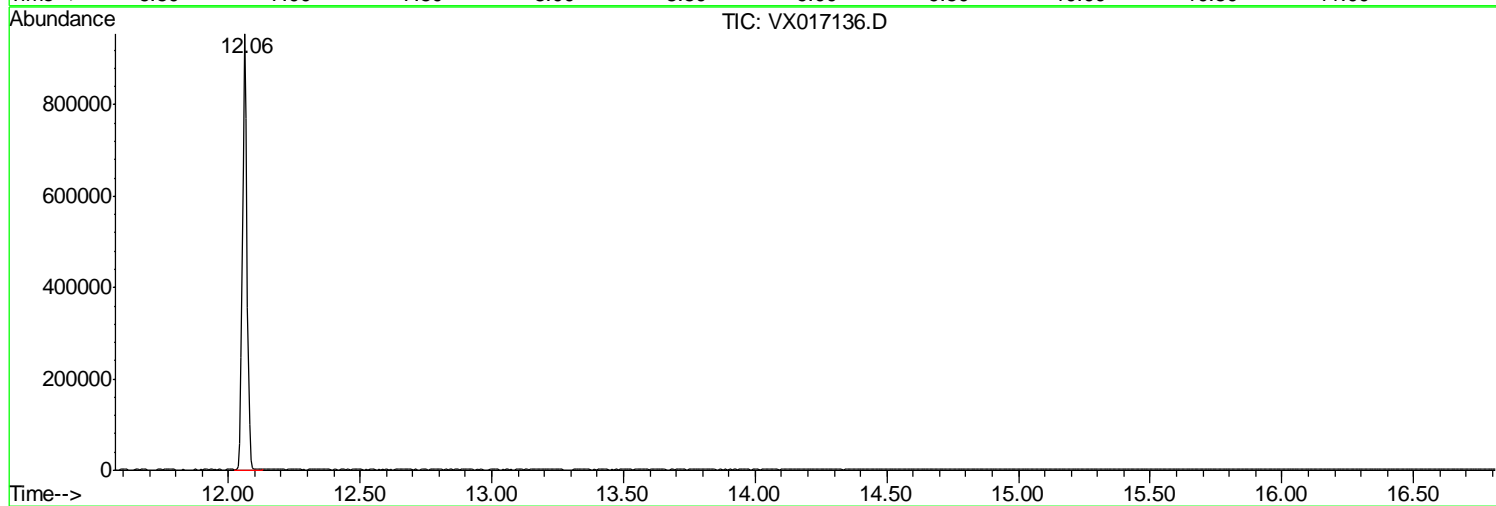
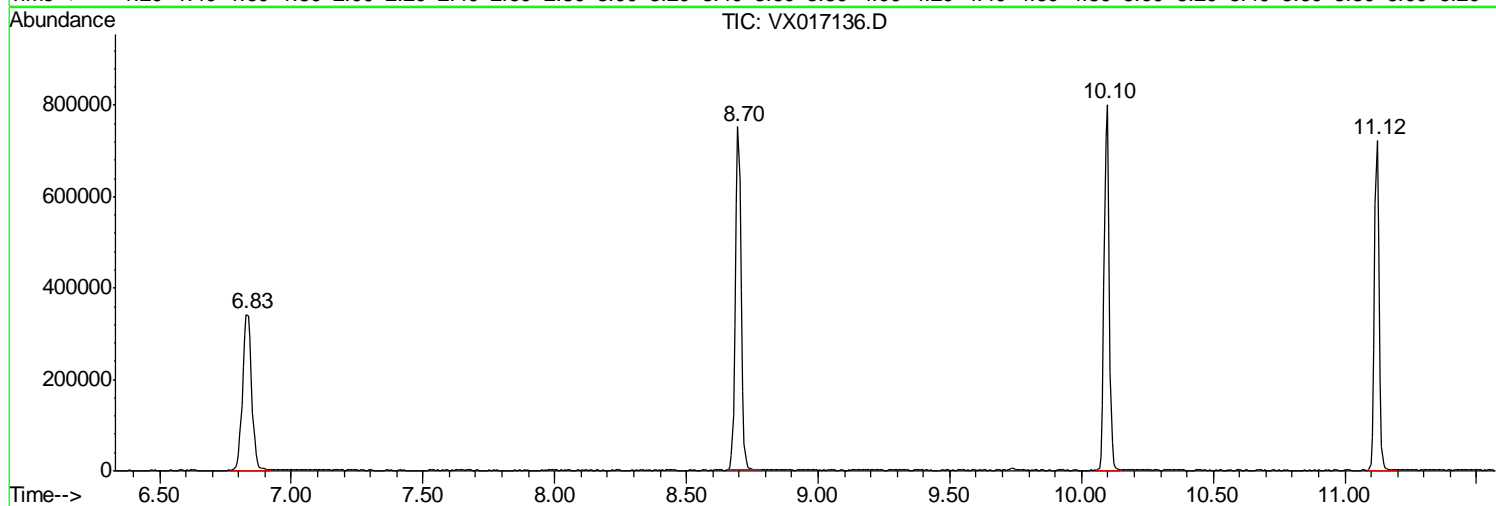
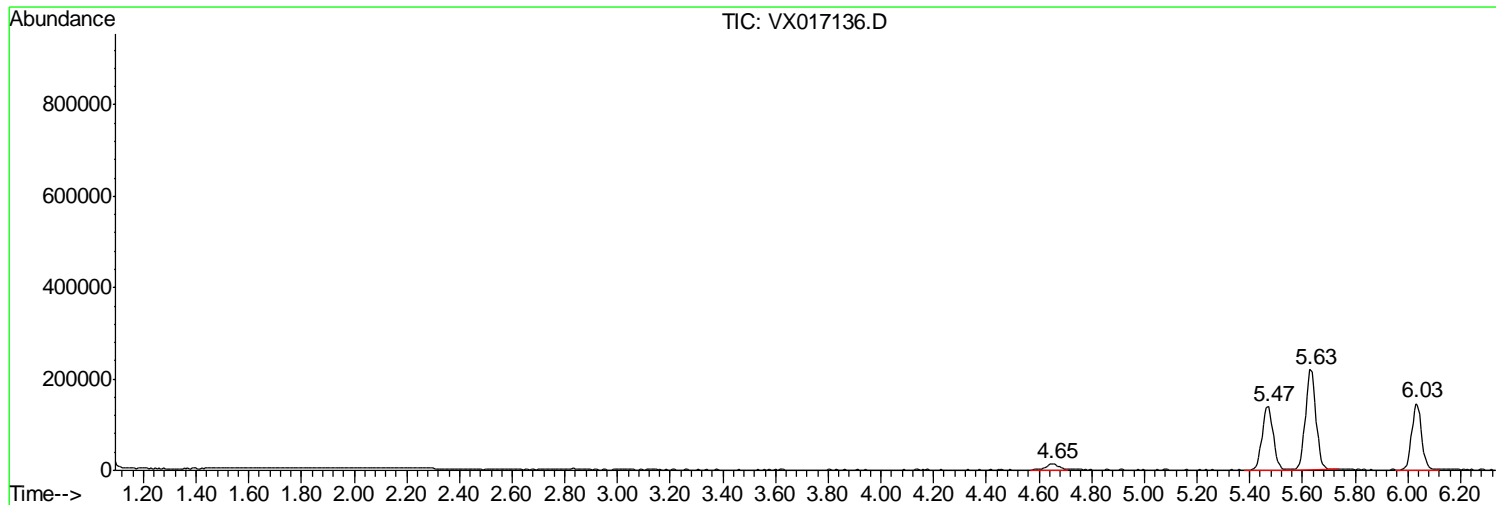
Sum of corrected areas: 6519913

Data Path : Z:\VOASRV\HPCHEM1\MSVOA X\DATA\VX070120\
Data File : VX017136.D
Acq On : 02 Jul 2020 06:25
Operator : JC/SP
Sample : L3159-23 100X
Misc : 5.0mL/MSVOA X/WATER
ALS Vial : 54 Sample Multiplier: 1

Instrument :
MSVOA_X
ClientSampled :
64BR-20200629

Quant Method : Z:\VOASRV\HPCHEM1\MSVOA_X\METHOD\82X062920W.M
Quant Title : SW846 8260

TIC Library : C:\DATABASE\NIST11.L
TIC Integration Parameters: LSCINT.P



Data Path : Z:\VOASRV\HPCHEM1\MSVOA_X\DATA\VX070120\
Data File : VX017136.D
Acq On : 02 Jul 2020 06:25
Operator : JC/SP
Sample : L3159-23 100X
Misc : 5.0mL/MSVOA_X/WATER
ALS Vial : 54 Sample Multiplier: 1

Instrument :
MSVOA_X
ClientSampleId :
64BR-20200629

Quant Method : Z:\VOASRV\HPCHEM1\MSVOA_X\METHOD\82X062920W.M
Quant Title : SW846 8260

TIC Library : C:\DATABASE\NIST11.L
TIC Integration Parameters: LSCINT.P

No Library Search Compounds Detected

Data Path : Z:\VOASRV\HPCHEM1\MSVOA_X\DATA\VX070120\
Data File : VX017136.D
Acq On : 02 Jul 2020 06:25
Operator : JC/SP
Sample : L3159-23 100X
Misc : 5.0mL/MSVOA_X/WATER
ALS Vial : 54 Sample Multiplier: 1

Instrument :
MSVOA_X
ClientSampleId :
64BR-20200629

Quant Method : Z:\VOASRV\HPCHEM1\MSVOA_X\METHOD\82X062920W.M
Quant Title : SW846 8260

TIC Library : C:\DATABASE\NIST11.L
TIC Integration Parameters: LSCINT.P

TIC Top Hit name	RT	EstConc	Units	Response	--Internal Standard--			
					#	RT	Resp	Conc
