

Data Path : Z:\VOASRV\HPCHEM1\MSVOA X\DATA\VX070318\
 Data File : VX003150.D
 Acq On : 03 Jul 2018 15:52
 Operator : JC/MD
 Sample : J3754-02
 Misc : 5.0mL/MSVOA X/WATER
 ALS Vial : 11 Sample Multiplier: 1

Instrument :
 MSVOA_X
 ClientSampled :
 S10-0139

Quant Time: Jul 04 03:15:38 2018
 Quant Method : Z:\VOASRV\HPCHEM1\MSVOA_X\METHOD\82X062518W.M
 Quant Title : SW846 8260
 QLast Update : Mon Jun 25 14:38:05 2018
 Response via : Initial Calibration

Internal Standards	R.T.	QIon	Response	Conc	Units	Dev(Min)
1) Pentafluorobenzene	5.67	168	264370	50.00	ug/l	0.00
34) 1,4-Difluorobenzene	6.87	114	366607	50.00	ug/l	0.00
63) Chlorobenzene-d5	10.12	117	344944	50.00	ug/l	0.00
72) 1,4-Dichlorobenzene-d4	12.08	152	199630	50.00	ug/l	0.00

System Monitoring Compounds

33) 1,2-Dichloroethane-d4	6.08	65	168779	46.19	ug/l	0.01
Spiked Amount	50.000		Recovery	=	92.38%	
35) Dibromofluoromethane	5.51	113	140730	48.47	ug/l	0.00
Spiked Amount	50.000		Recovery	=	96.94%	
50) Toluene-d8	8.72	98	516797	48.75	ug/l	0.00
Spiked Amount	50.000		Recovery	=	97.50%	
62) 4-Bromofluorobenzene	11.14	95	186384	45.59	ug/l	0.00
Spiked Amount	50.000		Recovery	=	91.18%	

Target Compounds

						Qvalue
2) Dichlorodifluoromethane	1.20	85	319	Below Cal		94
3) Chloromethane	1.33	50	7442	1.89	ug/l #	63
5) Bromomethane	1.66	94	2104	Below Cal		97
10) Methyl Iodide	2.52	142	2873	7.07	ug/l	96
11) Tert butyl alcohol	3.08	59	16520	22.69	ug/l	100
13) Acrolein	2.32	56	182	4.67	ug/l #	14
14) Allyl chloride	2.84	41	252001	49.03	ug/l #	61
15) Acrylonitrile	3.17	53	2461	1.58	ug/l #	43
16) Acetone	2.45	43	3944	2.61	ug/l	96
17) Carbon Disulfide	2.58	76	3084	0.44	ug/l #	79
18) Methyl Acetate	2.84	43	617978	146.06	ug/l #	55
20) Methylene Chloride	2.84	84	3876	1.32	ug/l #	1
25) 2-Butanone	4.71	43	1069	0.48	ug/l #	87
31) Cyclohexane	5.58	56	31008	6.77	ug/l	91
36) 1,1-Dichloropropene	5.67	75	17010	4.23	ug/l #	51
38) Carbon Tetrachloride	5.67	117	23477	5.32	ug/l #	15
39) Methylcyclohexane	7.46	83	20442	4.37	ug/l	93
40) Benzene	6.16	78	19359281	1657.30	ug/l	94
42) 1,2-Dichloroethane	6.16	62	188423	39.93	ug/l #	77
48) Methyl methacrylate	7.79	41	1114	0.30	ug/l #	78
49) 1,4-Dioxane	7.59	88	23	0.32	ug/l #	1
51) 4-Methyl-2-Pentanone	8.66	43	10205	2.25	ug/l	92
52) Toluene	8.79	92	4953	0.66	ug/l	94
56) Ethyl methacrylate	9.19	69	1126	0.25	ug/l #	77
59) 2-Hexanone	9.52	43	16889	4.89	ug/l	85
67) Ethyl Benzene	10.26	91	327371	22.62	ug/l	99
68) m/p-Xylenes	10.37	106	188222	33.74	ug/l	98
69) o-Xylene	10.70	106	1645	0.30	ug/l	99
73) Isopropylbenzene	11.02	105	142179	10.59	ug/l	98
75) 1,1,2,2-Tetrachloroethane	11.33	83	882	0.21	ug/l #	1
76) 1,2,3-Trichloropropane	11.14	75	94883	26.24	ug/l #	33
78) n-propylbenzene	11.37	91	61457	4.02	ug/l	99
79) 2-Chlorotoluene	11.46	91	6975	0.75	ug/l #	39
80) 1,3,5-Trimethylbenzene	11.51	105	39246	3.47	ug/l	99

Data Path : Z:\VOASRV\HPCHEM1\MSVOA X\DATA\VX070318\
 Data File : VX003150.D
 Acq On : 03 Jul 2018 15:52
 Operator : JC/MD
 Sample : J3754-02
 Misc : 5.0mL/MSVOA X/WATER
 ALS Vial : 11 Sample Multiplier: 1

Instrument :
 MSVOA_X
 ClientSampleId :
 S10-0139

Quant Time: Jul 04 03:15:38 2018
 Quant Method : Z:\VOASRV\HPCHEM1\MSVOA_X\METHOD\82X062518W.M
 Quant Title : SW846 8260
 QLast Update : Mon Jun 25 14:38:05 2018
 Response via : Initial Calibration

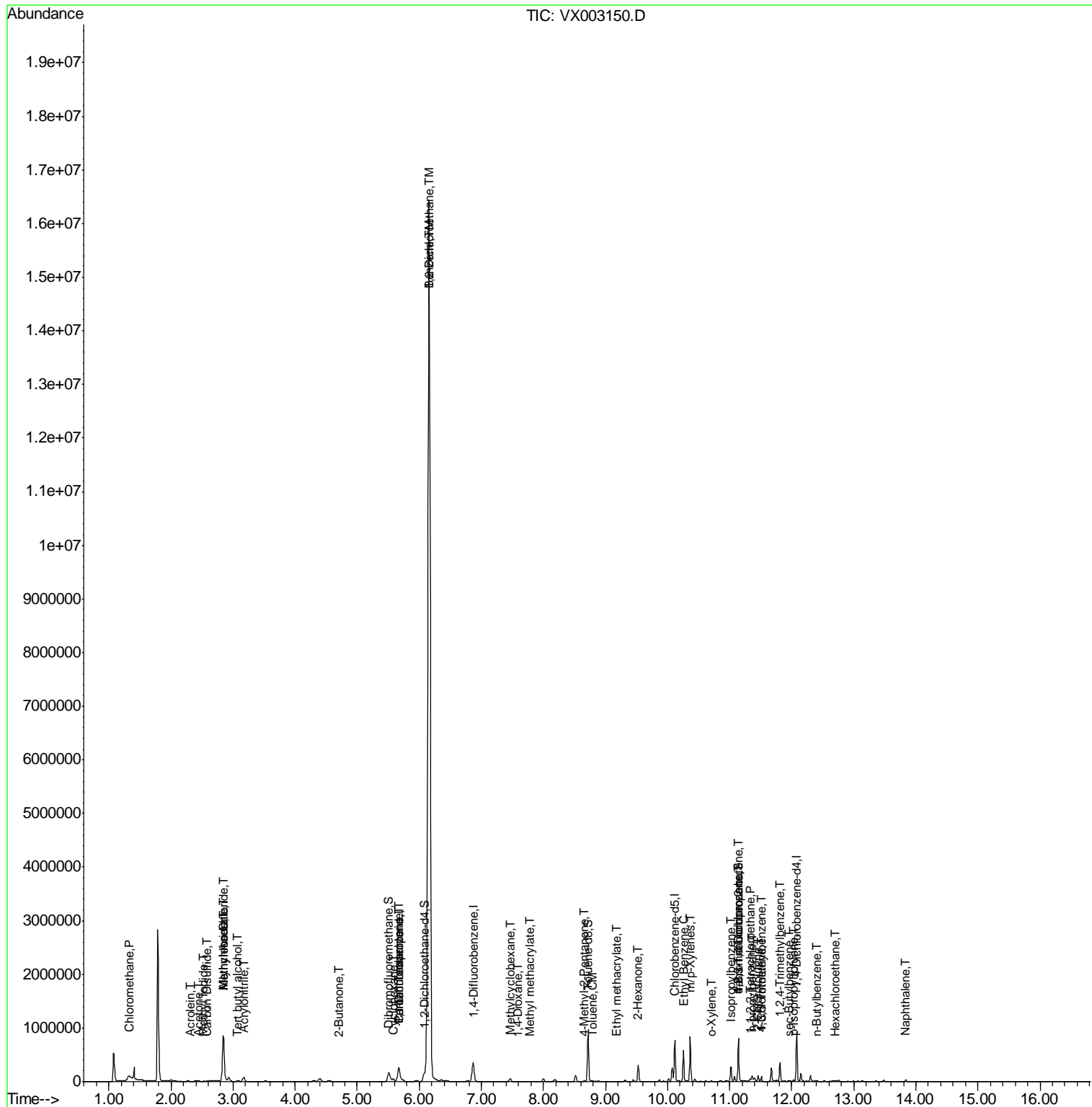
Internal Standards	R.T.	QIon	Response	Conc	Units	Dev(Min)
81) trans-1,4-Dichloro-2-buten	11.14	75	94883	74.37	ug/l #	7
82) 4-Chlorotoluene	11.51	91	4662	0.43	ug/l #	55
84) 1,2,4-Trimethylbenzene	11.81	105	150640	12.85	ug/l	96
85) sec-Butylbenzene	11.95	105	4738	0.35	ug/l	82
86) p-Isopropyltoluene	12.03	119	6047	0.50	ug/l	94
89) n-Butylbenzene	12.39	91	2210	0.21	ug/l #	69
90) Hexachloroethane	12.71	117	2836	1.57	ug/l #	1
95) Naphthalene	13.84	128	16328	1.19	ug/l	99

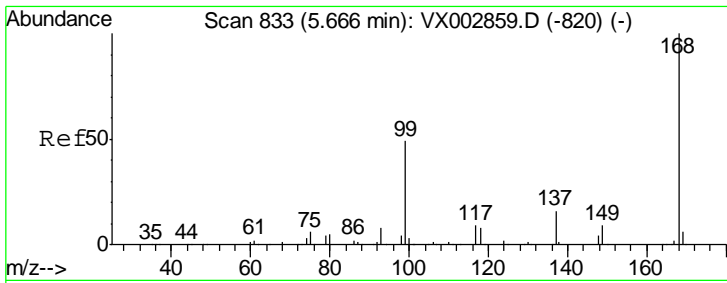
(#) = qualifier out of range (m) = manual integration (+) = signals summed

Data Path : Z:\VOASRV\HPCHEM1\MSVOA X\DATA\VX070318\
 Data File : VX003150.D
 Acq On : 03 Jul 2018 15:52
 Operator : JC/MD
 Sample : J3754-02
 Misc : 5.0mL/MSVOA X/WATER
 ALS Vial : 11 Sample Multiplier: 1

Instrument :
 MSVOA_X
 Client Sampled :
 S10-0139

Quant Time: Jul 04 03:15:38 2018
 Quant Method : Z:\VOASRV\HPCHEM1\MSVOA_X\METHOD\82X062518W.M
 Quant Title : SW846 8260
 QLast Update : Mon Jun 25 14:38:05 2018
 Response via : Initial Calibration

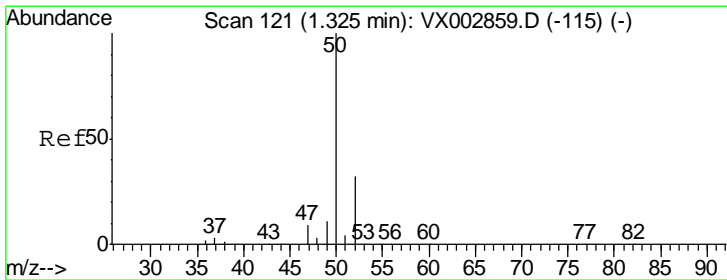
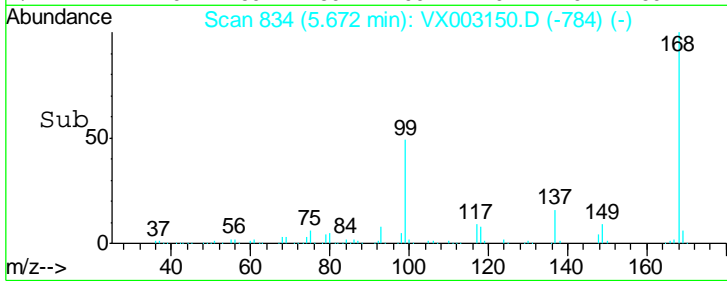
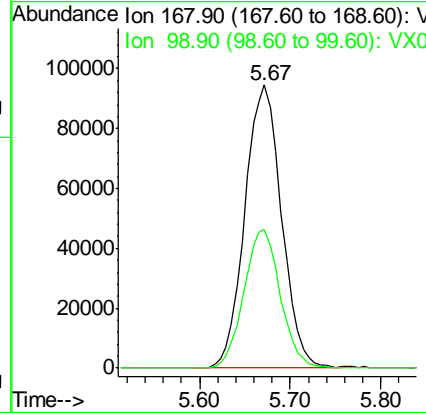
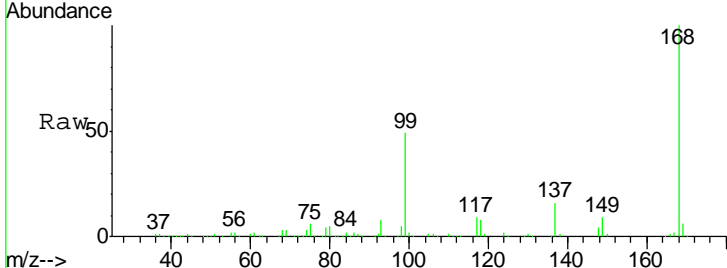




#1
 Pentafluorobenzene
 Concen: 50.00 ug/l
 RT: 5.67 min Scan# 834
 Delta R.T. 0.01 min
 Lab File: VX003150.D
 Acq: 03 Jul 2018 15:52

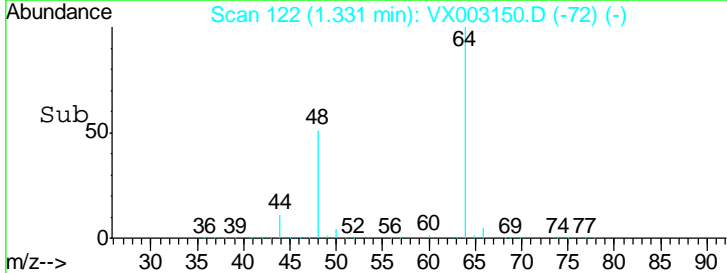
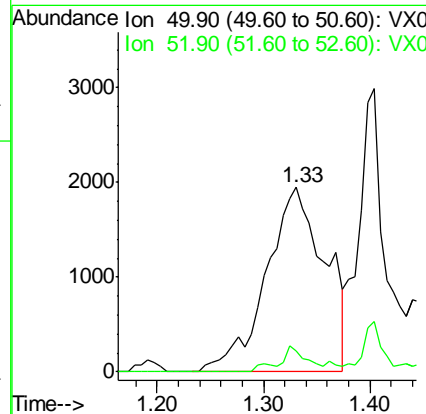
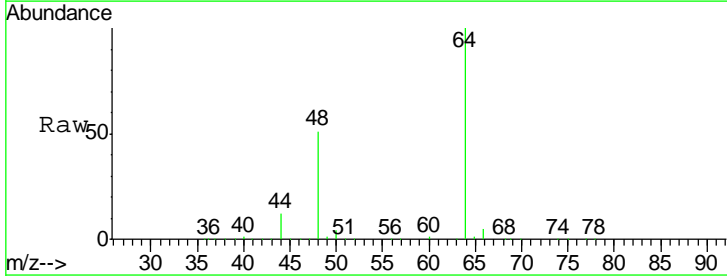
Instrument :
 MSVOA_X
ClientSampled :
 S10-0139

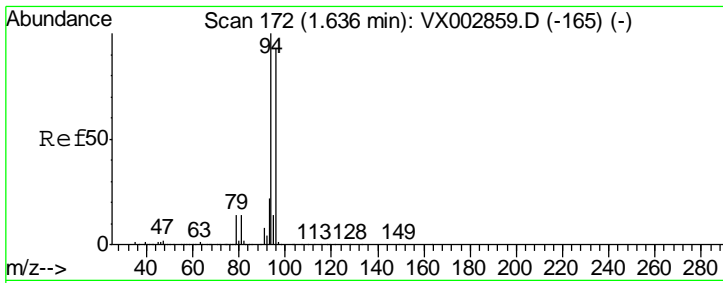
Tgt Ion	Resp	Lower	Upper
168	100		
99	48.8	39.3	58.9



#3
 Chloromethane
 Concen: 1.89 ug/l
 RT: 1.33 min Scan# 122
 Delta R.T. 0.01 min
 Lab File: VX003150.D
 Acq: 03 Jul 2018 15:52

Tgt Ion	Resp	Lower	Upper
50	100		
52	11.3	25.7	38.5#

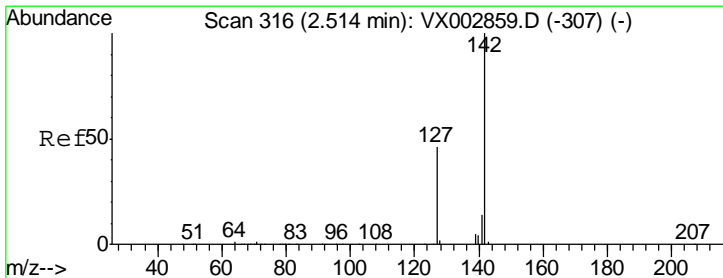
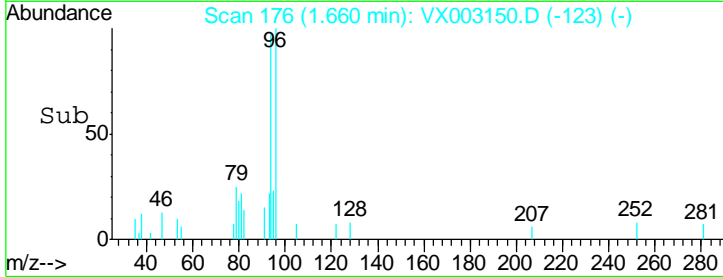
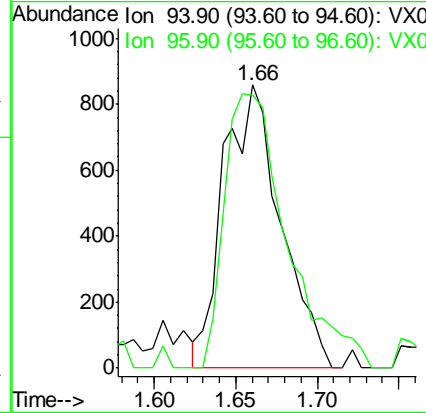
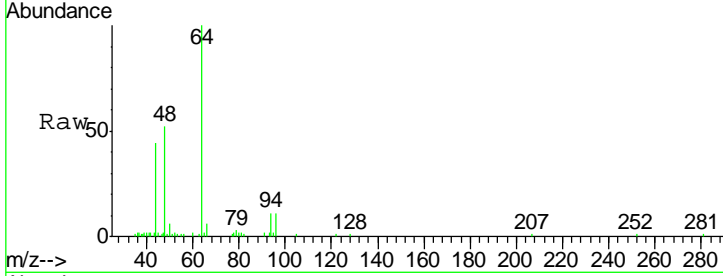




#5
 Bromomethane
 Concen: Below Cal
 RT: 1.66 min Scan# 176
 Delta R.T. 0.03 min
 Lab File: VX003150.D
 Acq: 03 Jul 2018 15:52

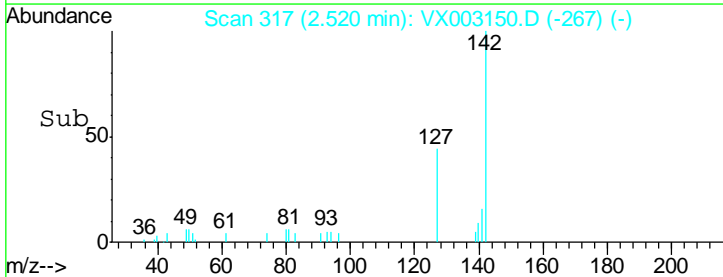
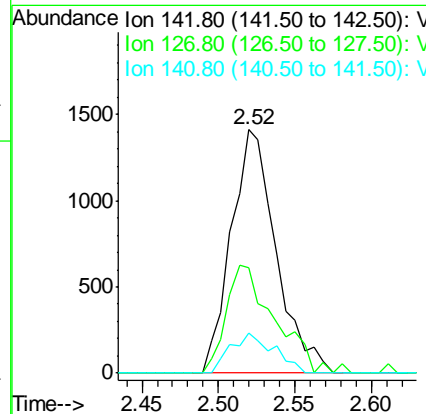
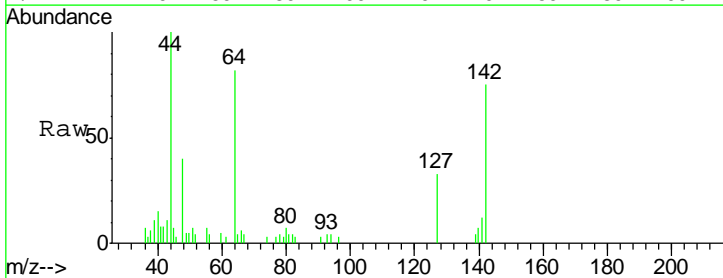
Instrument :
 MSVOA_X
 ClientSampled :
 S10-0139

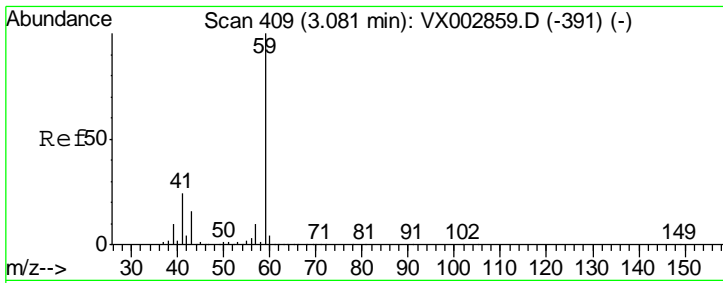
Tgt Ion	Resp	Lower	Upper
94	2104		
96	96.4	74.9	112.3



#10
 Methyl Iodide
 Concen: 7.07 ug/l
 RT: 2.52 min Scan# 317
 Delta R.T. 0.01 min
 Lab File: VX003150.D
 Acq: 03 Jul 2018 15:52

Tgt Ion	Resp	Lower	Upper
142	2873		
127	48.0	36.6	55.0
141	15.8	11.3	16.9

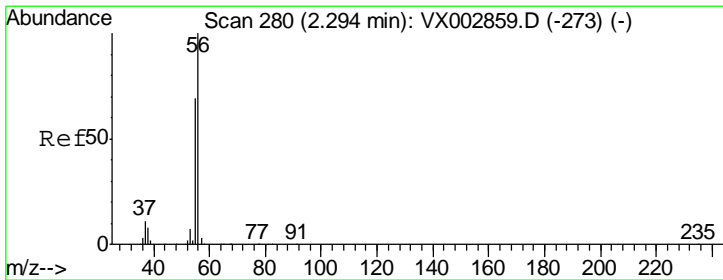
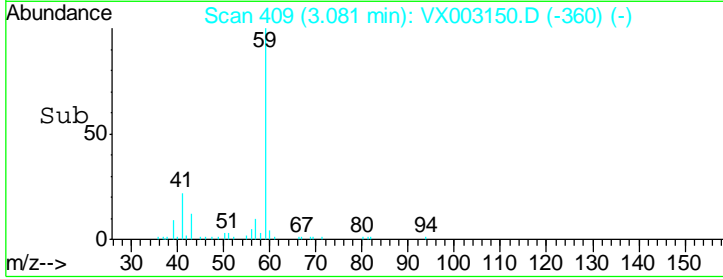
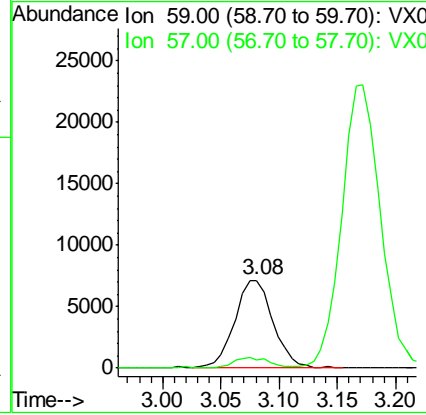
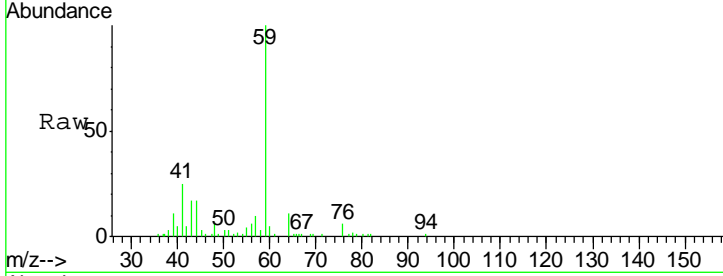




#11
 Tert butyl alcohol
 Concen: 22.69 ug/l
 RT: 3.08 min Scan# 409
 Delta R.T. 0.00 min
 Lab File: VX003150.D
 Acq: 03 Jul 2018 15:52

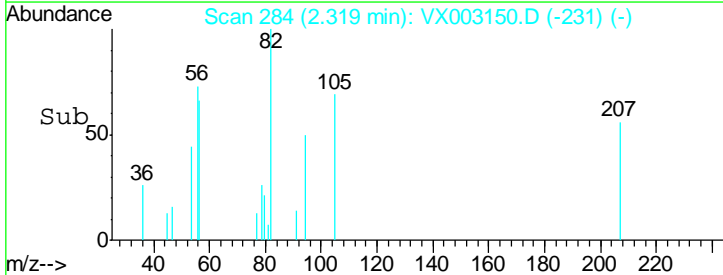
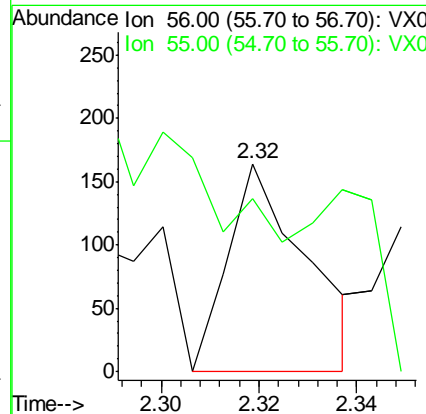
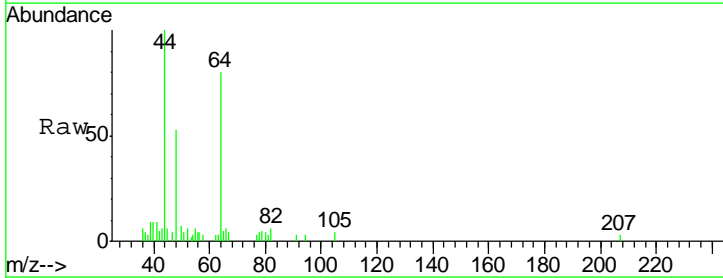
Instrument :
 MSVOA_X
 ClientSampled :
 S10-0139

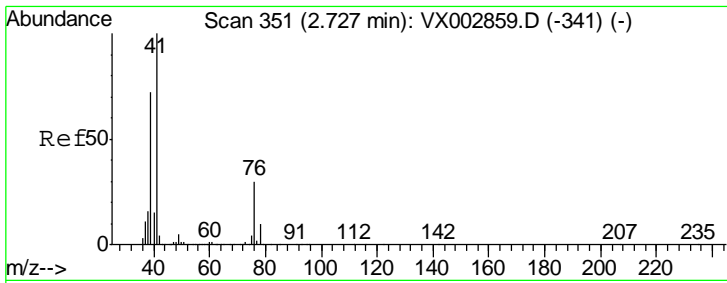
Tgt Ion: 59 Resp: 16520
 Ion Ratio Lower Upper
 59 100
 57 10.3 8.2 12.2



#13
 Acrolein
 Concen: 4.67 ug/l
 RT: 2.32 min Scan# 284
 Delta R.T. 0.02 min
 Lab File: VX003150.D
 Acq: 03 Jul 2018 15:52

Tgt Ion: 56 Resp: 182
 Ion Ratio Lower Upper
 56 100
 55 0.0 57.0 85.4#

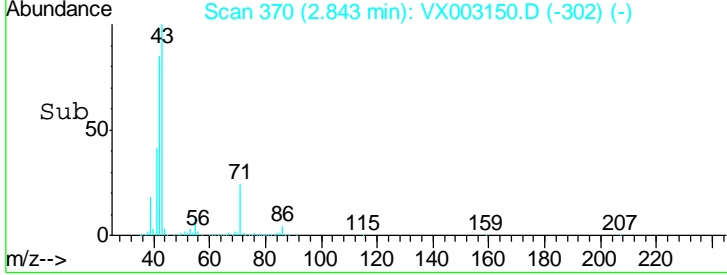
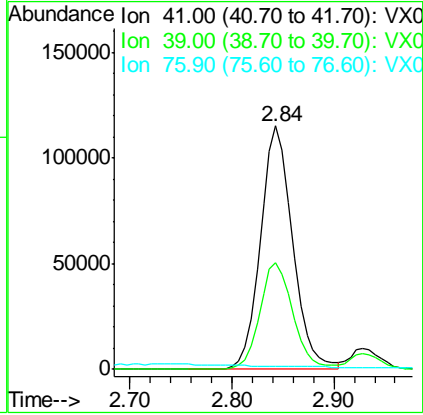
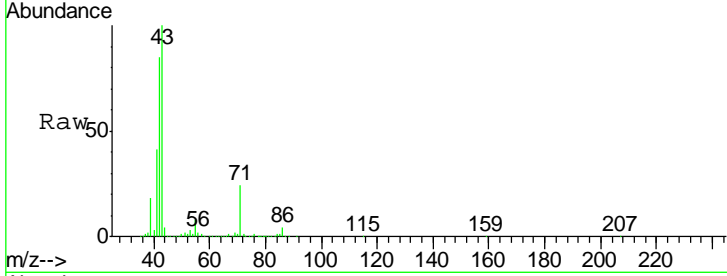




#14
 Allyl chloride
 Concen: 49.03 ug/l
 RT: 2.84 min Scan# 370
 Delta R.T. 0.12 min
 Lab File: VX003150.D
 Acq: 03 Jul 2018 15:52

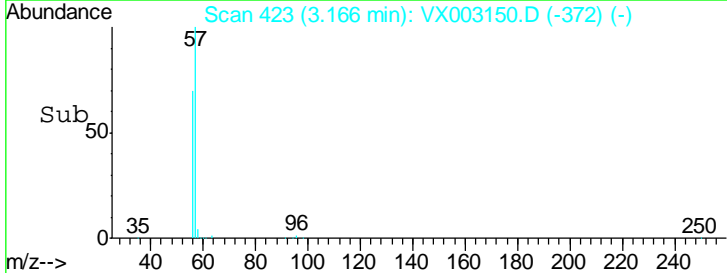
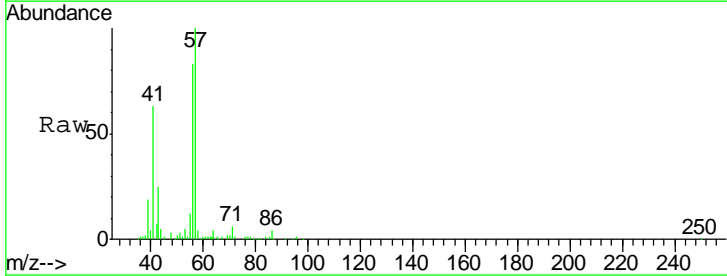
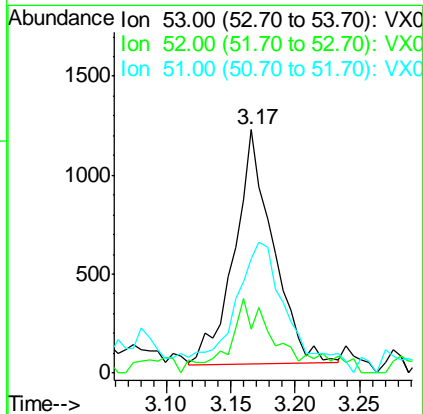
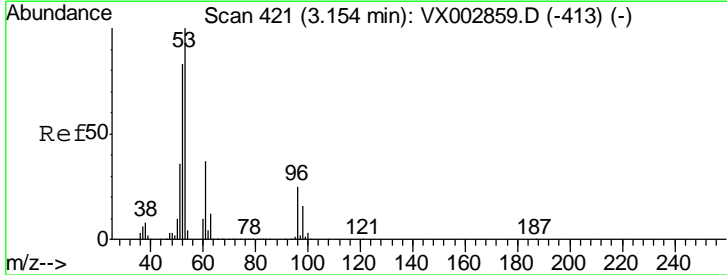
Instrument :
 MSVOA_X
ClientSampled :
 S10-0139

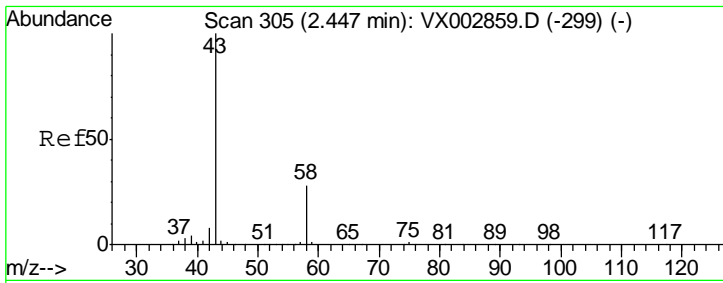
Tgt Ion	Resp	Lower	Upper
41	100		
39	44.8	56.8	85.2#
76	0.0	23.8	35.8#



#15
 Acrylonitrile
 Concen: 1.58 ug/l
 RT: 3.17 min Scan# 423
 Delta R.T. 0.01 min
 Lab File: VX003150.D
 Acq: 03 Jul 2018 15:52

Tgt Ion	Resp	Lower	Upper
53	100		
52	36.4	66.7	100.1#
51	77.4	29.9	44.9#

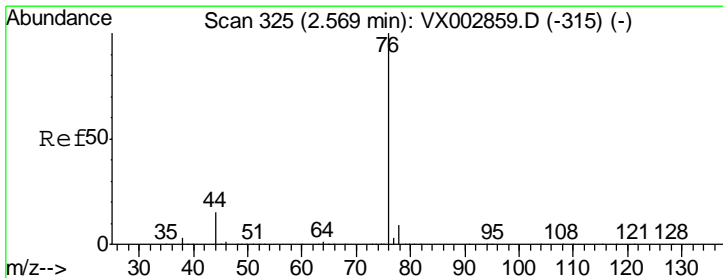
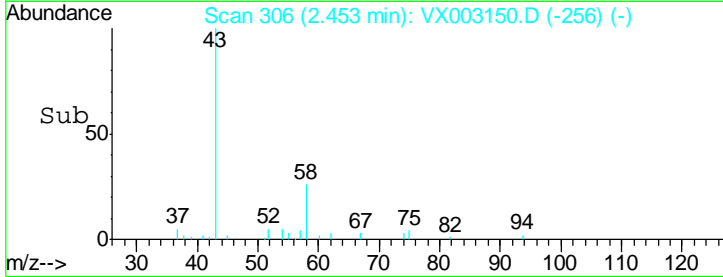
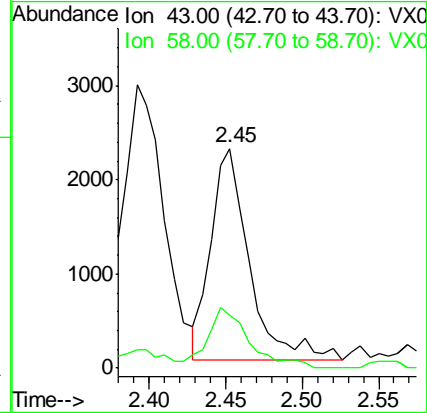
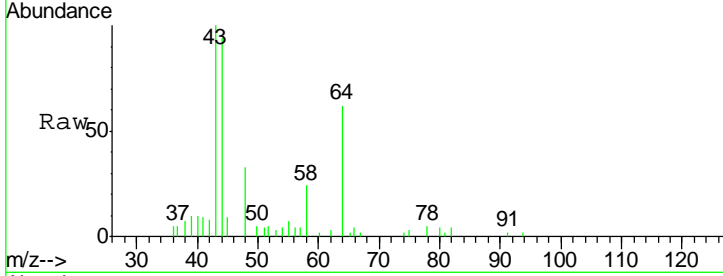




#16
 Acetone
 Concen: 2.61 ug/l
 RT: 2.45 min Scan# 306
 Delta R.T. 0.01 min
 Lab File: VX003150.D
 Acq: 03 Jul 2018 15:52

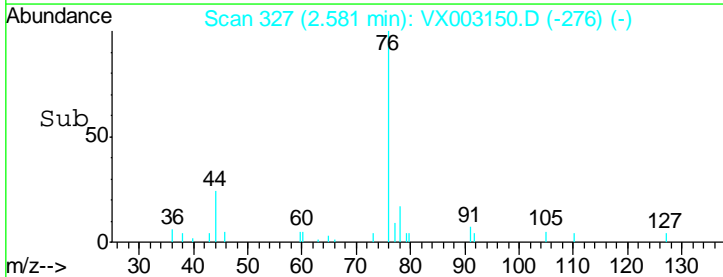
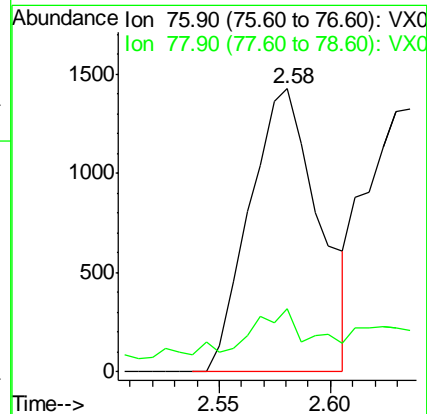
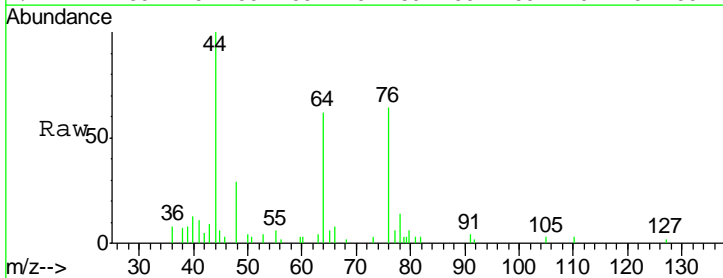
Instrument :
 MSVOA_X
 ClientSampled :
 S10-0139

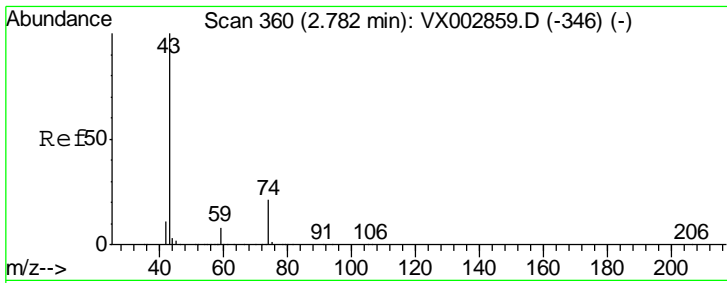
Tgt Ion: 43 Resp: 3944
 Ion Ratio Lower Upper
 43 100
 58 25.3 22.1 33.1



#17
 Carbon Disulfide
 Concen: 0.44 ug/l
 RT: 2.58 min Scan# 327
 Delta R.T. 0.01 min
 Lab File: VX003150.D
 Acq: 03 Jul 2018 15:52

Tgt Ion: 76 Resp: 3084
 Ion Ratio Lower Upper
 76 100
 78 16.0 6.9 10.3#

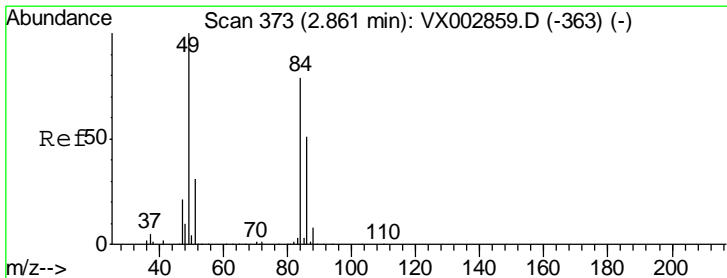
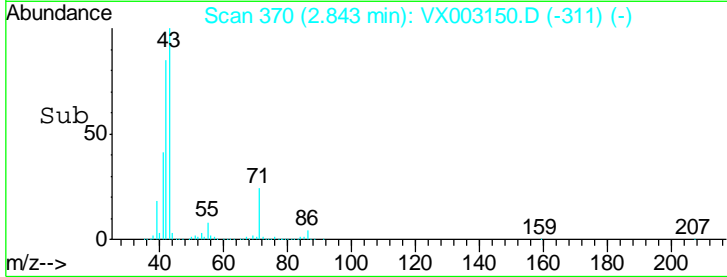
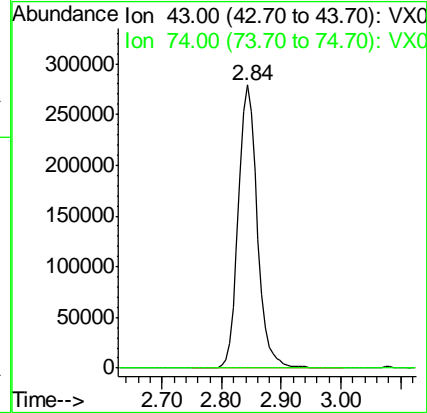
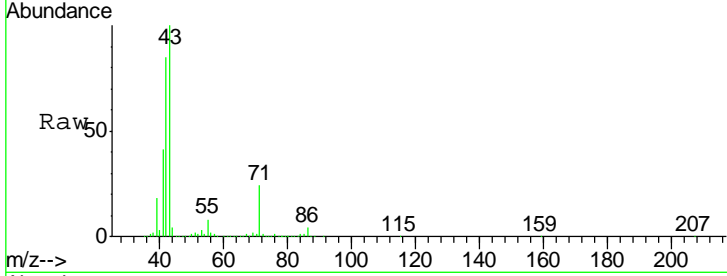




#18
 Methyl Acetate
 Concen: 146.06 ug/l
 RT: 2.84 min Scan# 370
 Delta R.T. 0.06 min
 Lab File: VX003150.D
 Acq: 03 Jul 2018 15:52

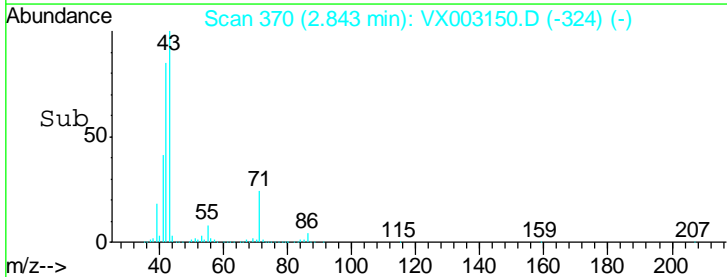
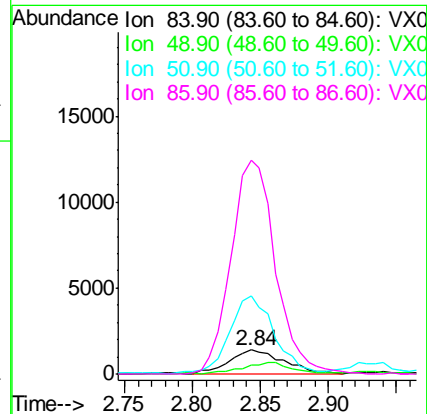
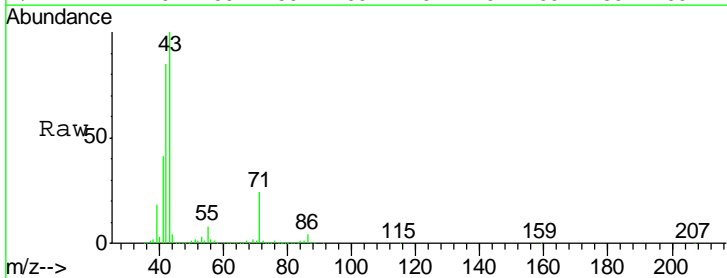
Instrument :
 MSVOA_X
 ClientSampled :
 S10-0139

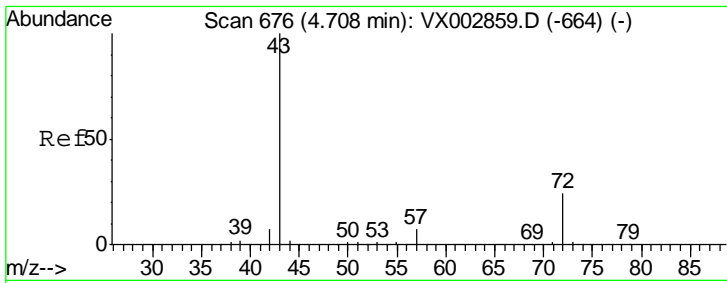
Tgt Ion: 43 Resp: 617978
 Ion Ratio Lower Upper
 43 100
 74 0.0 16.7 25.1#



#20
 Methylene Chloride
 Concen: 1.32 ug/l
 RT: 2.84 min Scan# 370
 Delta R.T. -0.02 min
 Lab File: VX003150.D
 Acq: 03 Jul 2018 15:52

Tgt Ion: 84 Resp: 3876
 Ion Ratio Lower Upper
 84 100
 49 31.1 107.8 161.6#
 51 317.6 32.8 49.2#
 86 882.3 52.5 78.7#

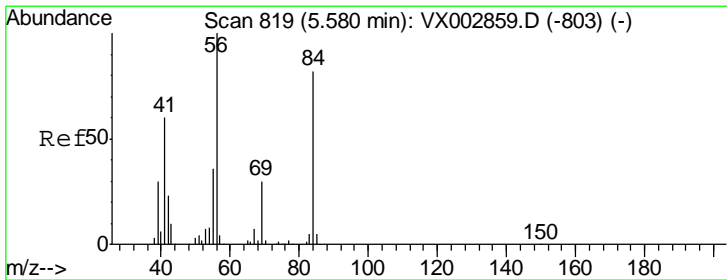
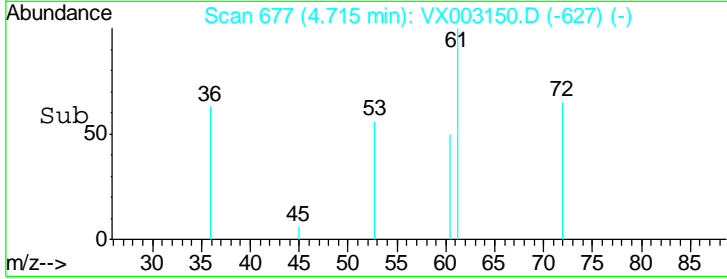
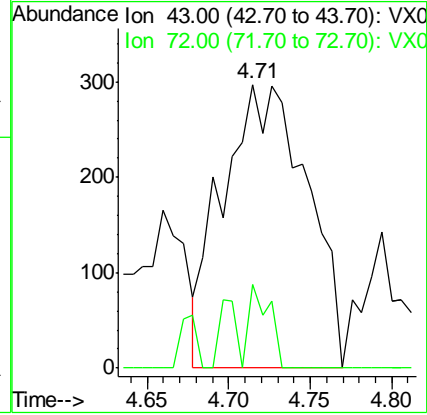
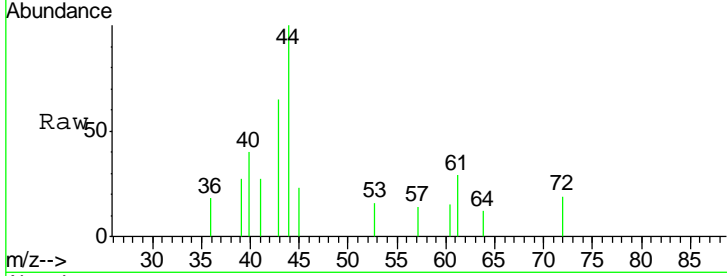




#25
 2-Butanone
 Concen: 0.48 ug/l
 RT: 4.71 min Scan# 677
 Delta R.T. 0.01 min
 Lab File: VX003150.D
 Acq: 03 Jul 2018 15:52

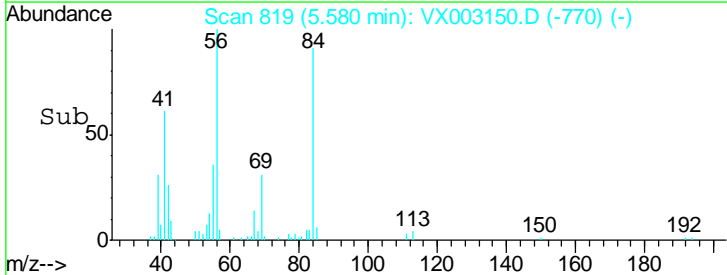
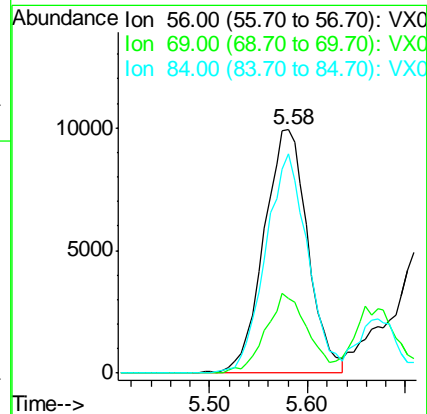
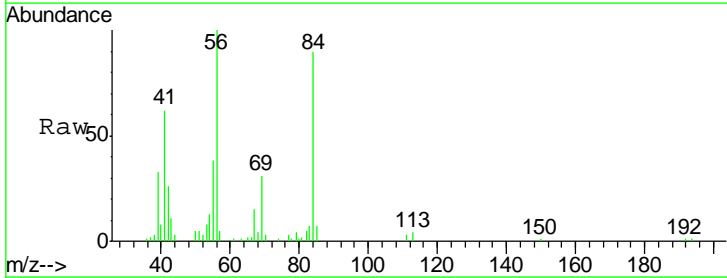
Instrument :
 MSVOA_X
 ClientSampled :
 S10-0139

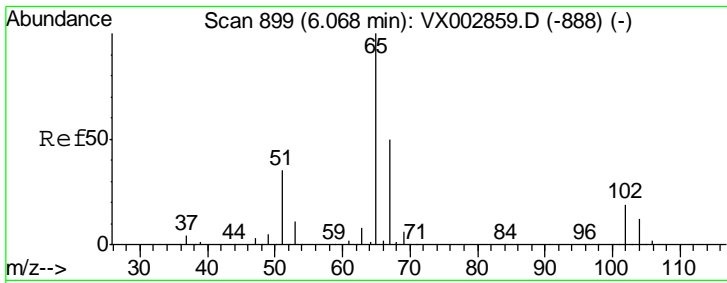
Tgt Ion	Resp	Lower	Upper
43	1069		
72	29.3	18.5	27.7#



#31
 Cyclohexane
 Concen: 6.77 ug/l
 RT: 5.58 min Scan# 819
 Delta R.T. 0.00 min
 Lab File: VX003150.D
 Acq: 03 Jul 2018 15:52

Tgt Ion	Resp	Lower	Upper
56	31008		
69	30.7	23.7	35.5
84	90.1	64.1	96.1



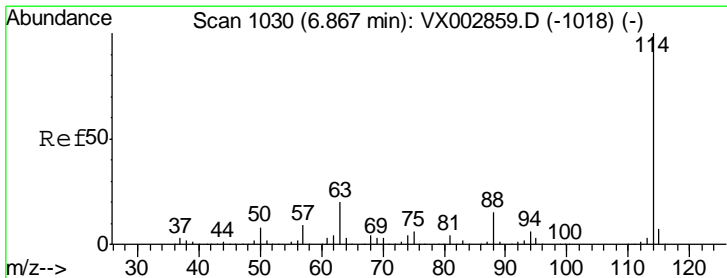
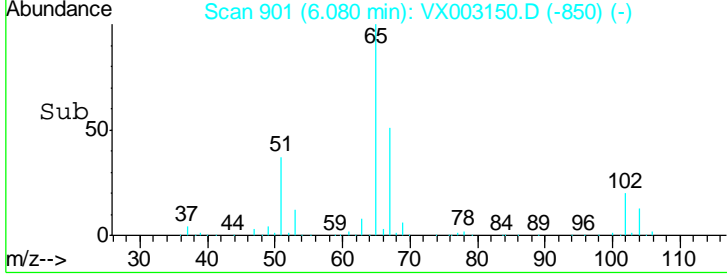
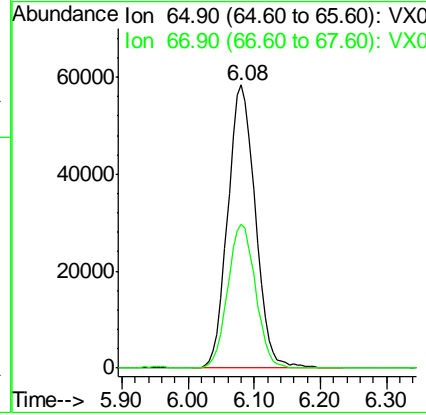
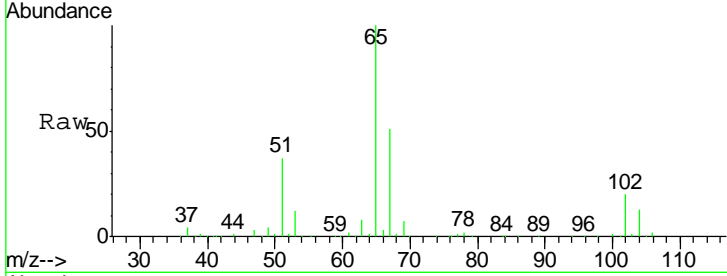


#33
 1,2-Dichloroethane-d4
 Concen: 46.19 ug/l
 RT: 6.08 min Scan# 901
 Delta R.T. 0.01 min
 Lab File: VX003150.D
 Acq: 03 Jul 2018 15:52

Instrument :
 MSVOA_X
ClientSampled :
 S10-0139

Tgt Ion: 65 Resp: 168779

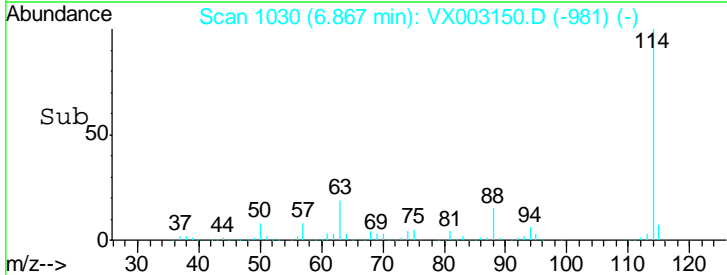
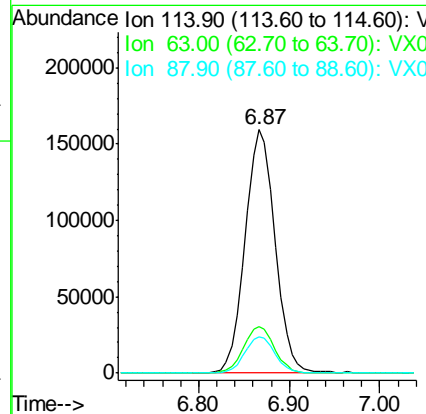
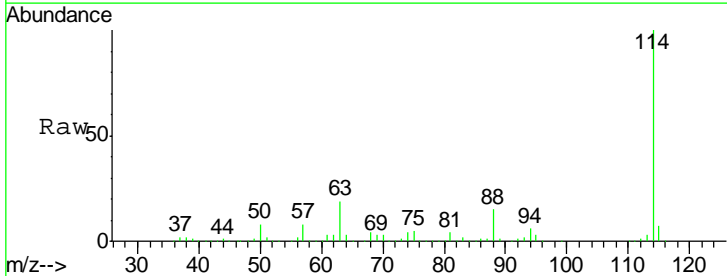
Ion	Ratio	Lower	Upper
65	100		
67	50.6	0.0	102.6

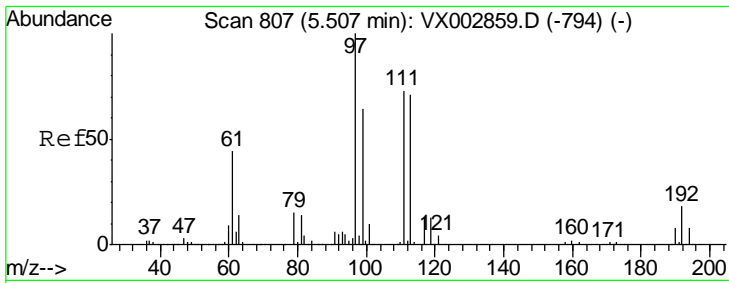


#34
 1,4-Difluorobenzene
 Concen: 50.00 ug/l
 RT: 6.87 min Scan# 1030
 Delta R.T. 0.00 min
 Lab File: VX003150.D
 Acq: 03 Jul 2018 15:52

Tgt Ion: 114 Resp: 366607

Ion	Ratio	Lower	Upper
114	100		
63	19.1	0.0	41.4
88	15.1	0.0	30.0



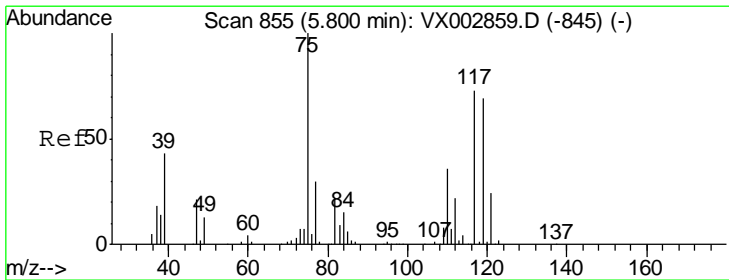
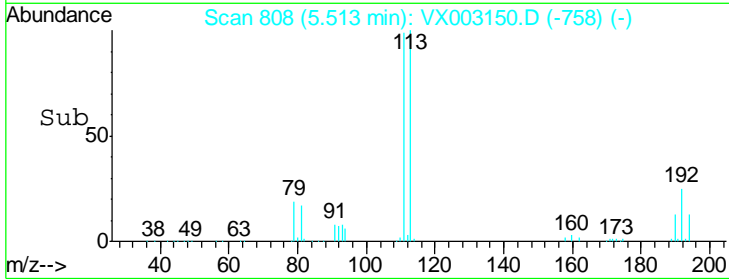
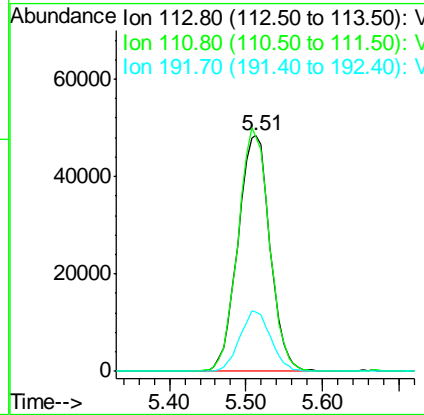
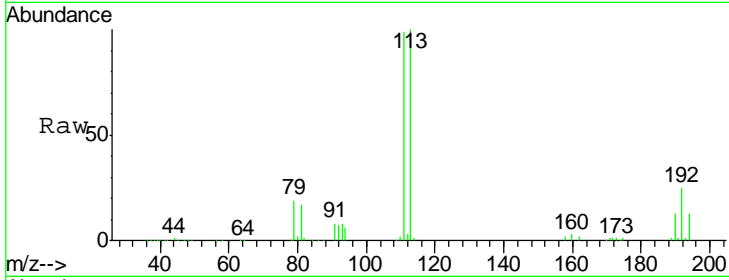


#35
 Dibromofluoromethane
 Concen: 48.47 ug/l
 RT: 5.51 min Scan# 808
 Delta R.T. 0.01 min
 Lab File: VX003150.D
 Acq: 03 Jul 2018 15:52

Instrument :
 MSVOA_X
 ClientSampled :
 S10-0139

Tgt Ion: 113 Resp: 140730

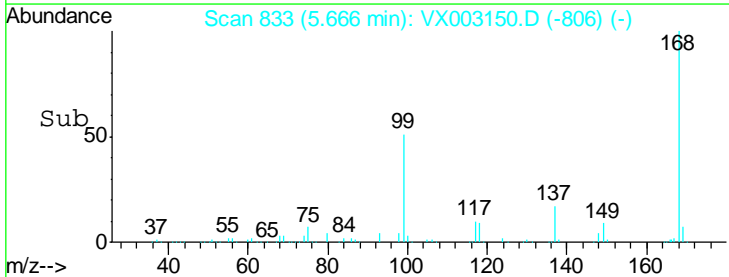
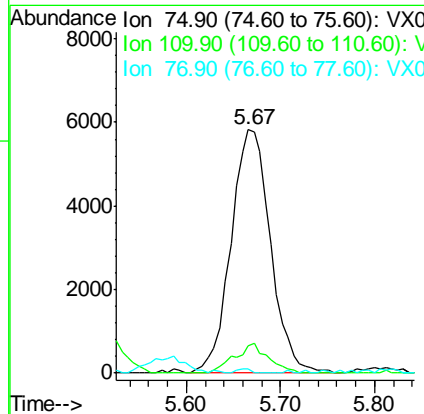
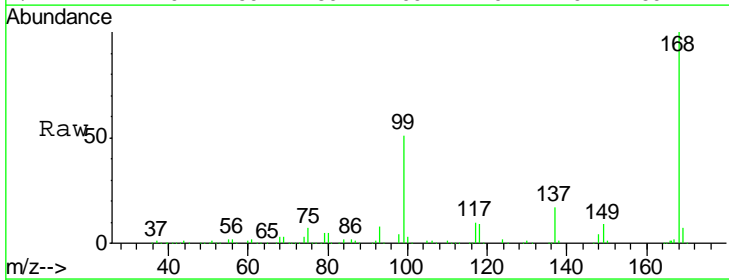
Ion	Ratio	Lower	Upper
113	100		
111	100.6	81.4	122.0
192	24.8	19.1	28.7

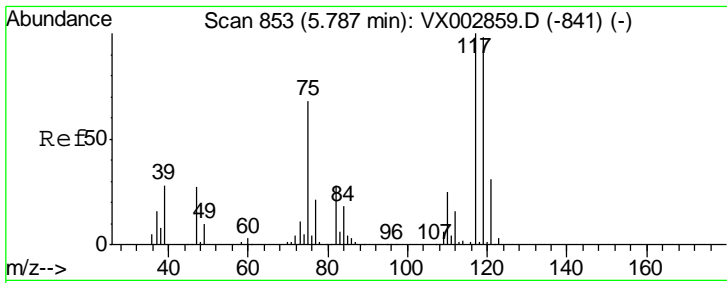


#36
 1,1-Dichloropropene
 Concen: 4.23 ug/l
 RT: 5.67 min Scan# 833
 Delta R.T. -0.13 min
 Lab File: VX003150.D
 Acq: 03 Jul 2018 15:52

Tgt Ion: 75 Resp: 17010

Ion	Ratio	Lower	Upper
75	100		
110	10.3	18.1	54.4#
77	0.0	24.3	36.5#

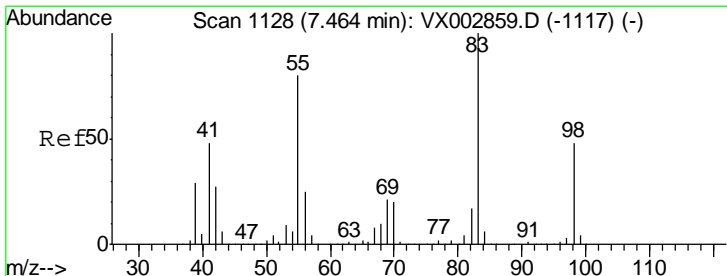
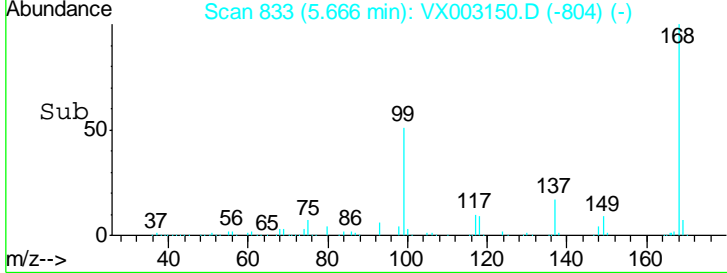
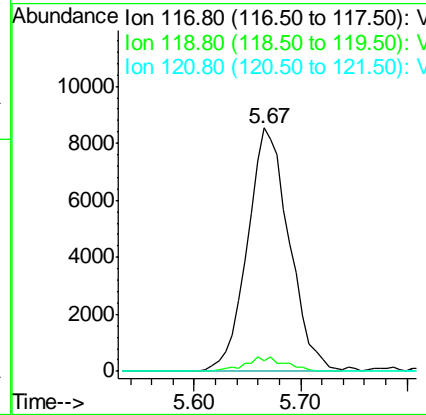
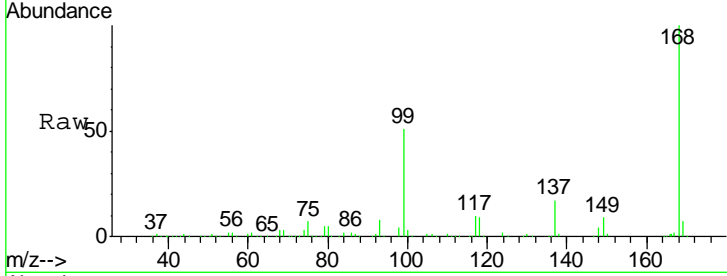




#38
 Carbon Tetrachloride
 Concen: 5.32 ug/l
 RT: 5.67 min Scan# 833
 Delta R.T. -0.12 min
 Lab File: VX003150.D
 Acq: 03 Jul 2018 15:52

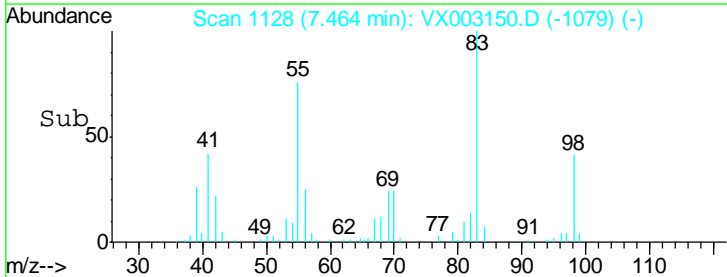
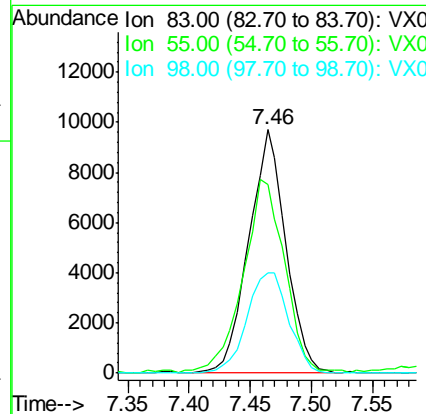
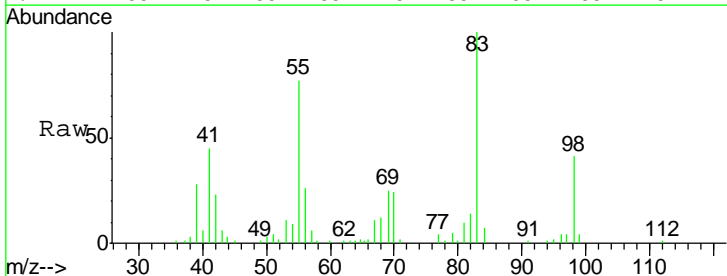
Instrument :
 MSVOA_X
ClientSampled :
 S10-0139

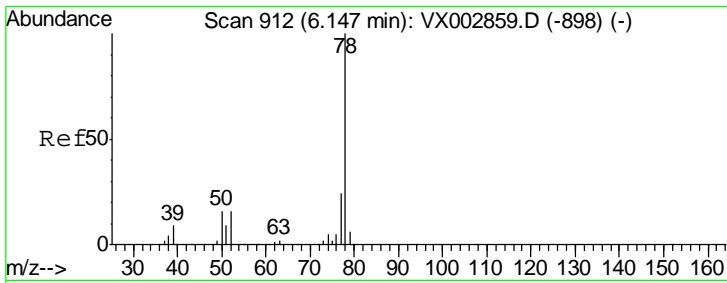
Tgt Ion	Resp	Lower	Upper
117	100		
119	4.5	77.4	116.0#
121	0.0	24.4	36.6#



#39
 Methylcyclohexane
 Concen: 4.37 ug/l
 RT: 7.46 min Scan# 1128
 Delta R.T. 0.00 min
 Lab File: VX003150.D
 Acq: 03 Jul 2018 15:52

Tgt Ion	Resp	Lower	Upper
83	100		
55	76.2	65.4	98.0
98	41.3	37.4	56.0

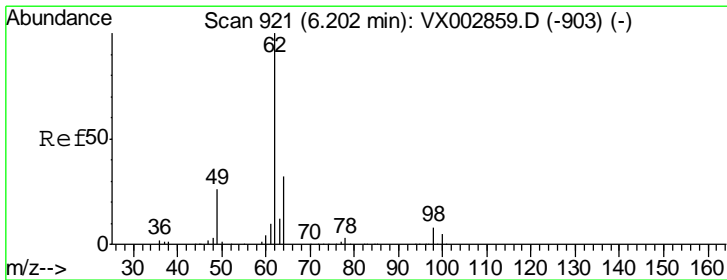
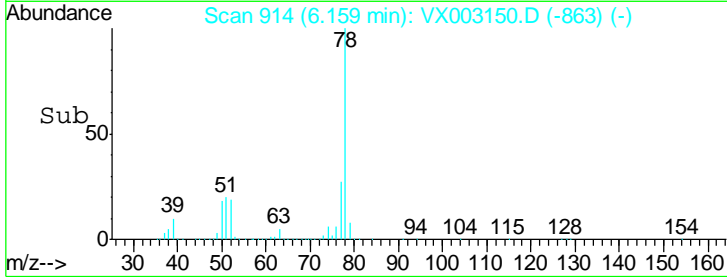
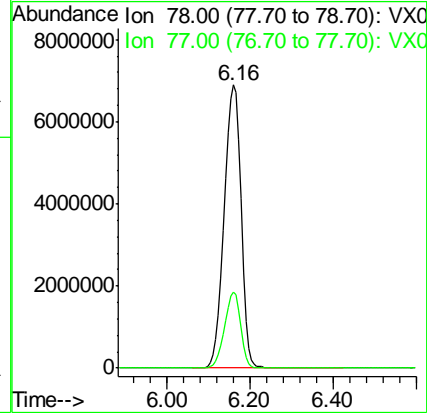
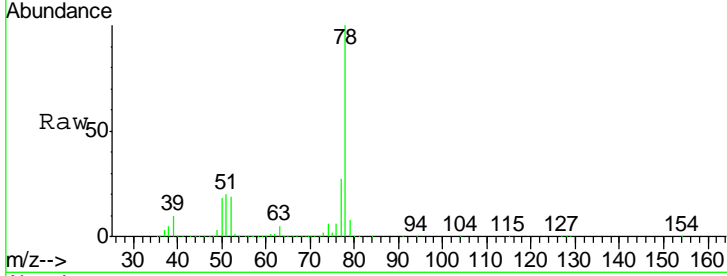




#40
Benzene
Concen: 1657.30 ug/l
RT: 6.16 min Scan# 914
Delta R.T. 0.01 min
Lab File: VX003150.D
Acq: 03 Jul 2018 15:52

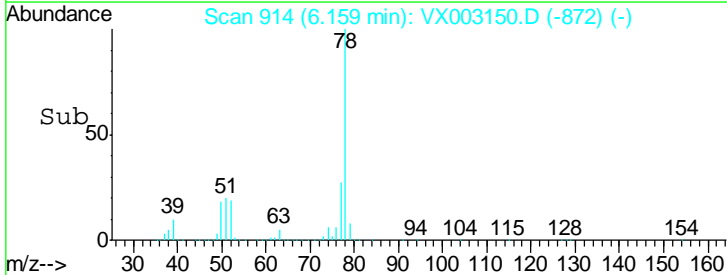
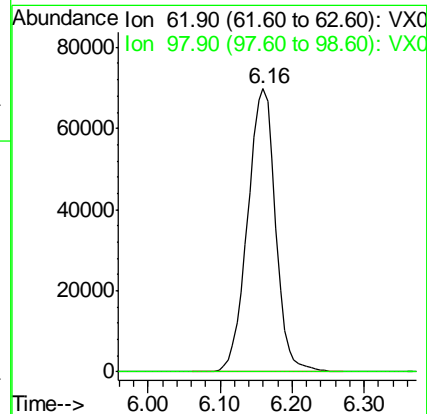
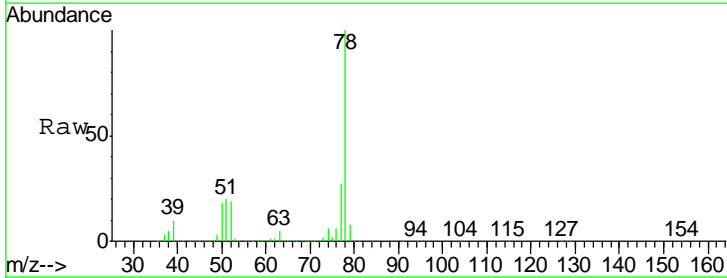
Instrument :
MSVOA_X
ClientSampled :
S10-0139

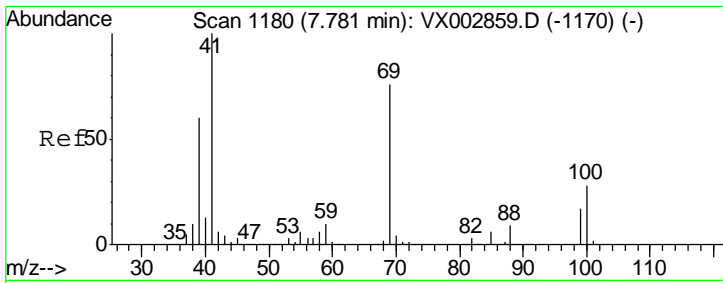
Tgt Ion: 78 Resp: 19359281
Ion Ratio Lower Upper
78 100
77 27.0 19.1 28.7



#42
1,2-Dichloroethane
Concen: 39.93 ug/l
RT: 6.16 min Scan# 914
Delta R.T. -0.04 min
Lab File: VX003150.D
Acq: 03 Jul 2018 15:52

Tgt Ion: 62 Resp: 188423
Ion Ratio Lower Upper
62 100
98 0.0 0.0 16.6

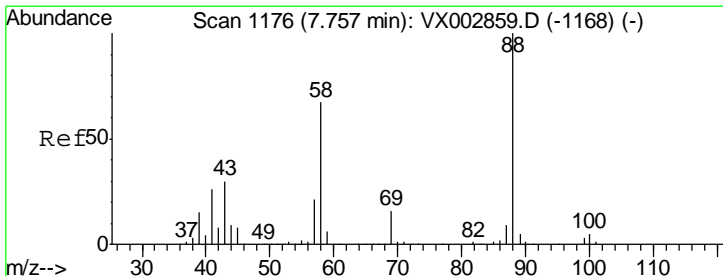
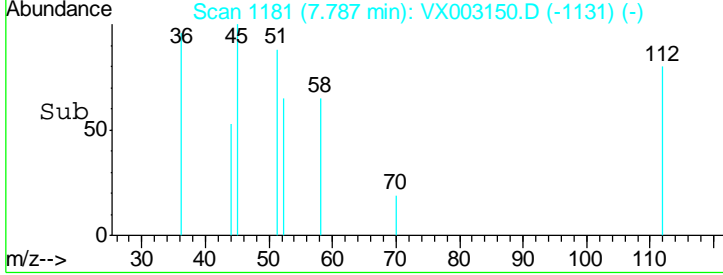
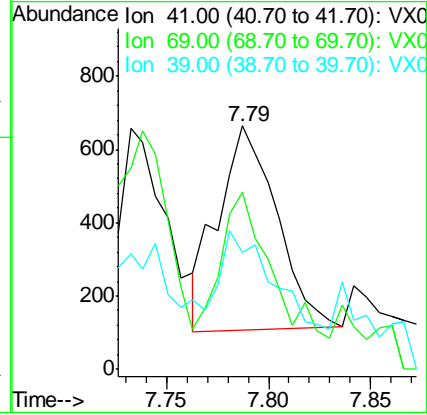
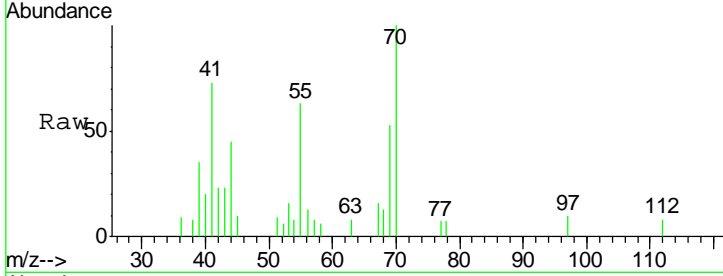




#48
Methyl methacrylate
Concen: 0.30 ug/l
RT: 7.79 min Scan# 1181
Delta R.T. 0.01 min
Lab File: VX003150.D
Acq: 03 Jul 2018 15:52

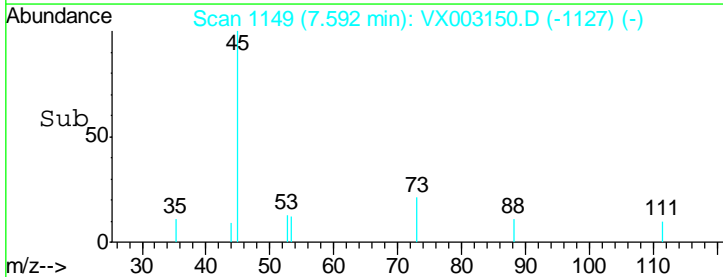
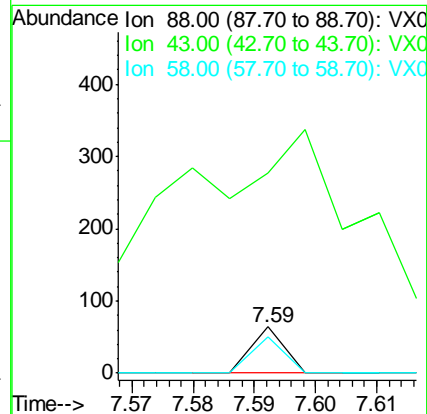
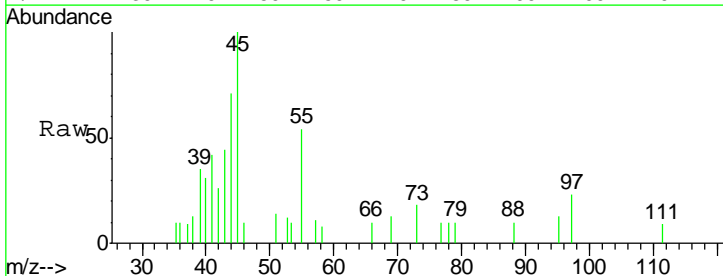
Instrument :
MSVOA_X
ClientSampled :
S10-0139

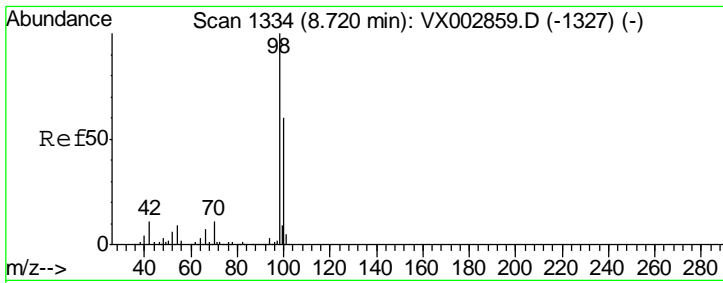
Tgt Ion	Resp	Lower	Upper
41	100		
69	88.7	59.1	88.7#
39	39.8	48.9	73.3#



#49
1,4-Dioxane
Concen: 0.32 ug/l
RT: 7.59 min Scan# 1149
Delta R.T. -0.16 min
Lab File: VX003150.D
Acq: 03 Jul 2018 15:52

Tgt Ion	Resp	Lower	Upper
88	100		
43	2191.3	29.8	44.6#
58	0.0	57.1	85.7#

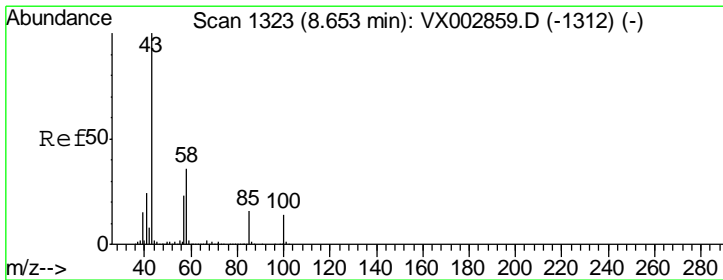
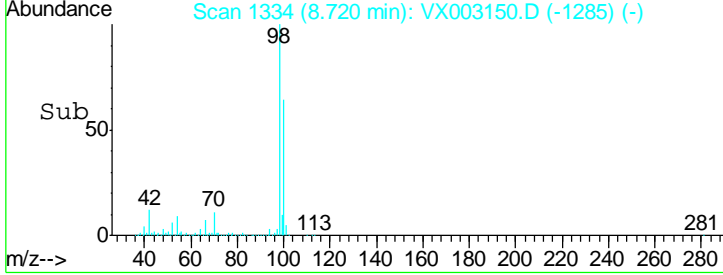
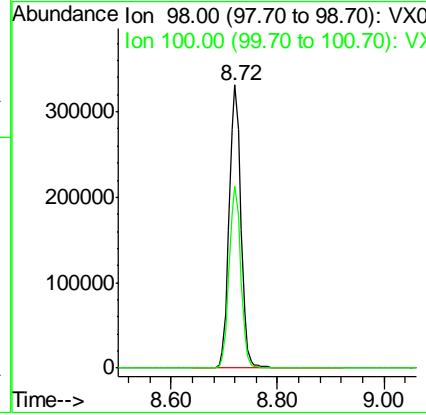
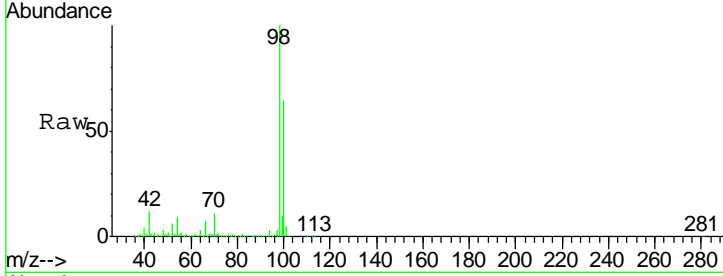




#50
 Toluene-d8
 Concen: 48.75 ug/l
 RT: 8.72 min Scan# 1334
 Delta R.T. 0.00 min
 Lab File: VX003150.D
 Acq: 03 Jul 2018 15:52

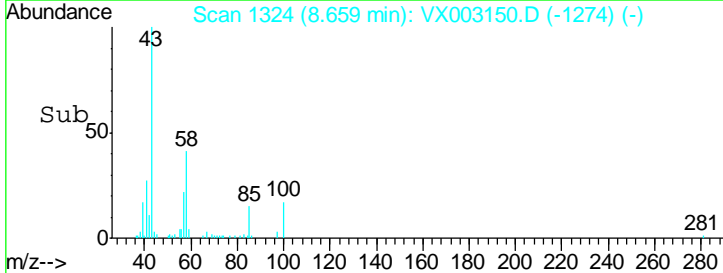
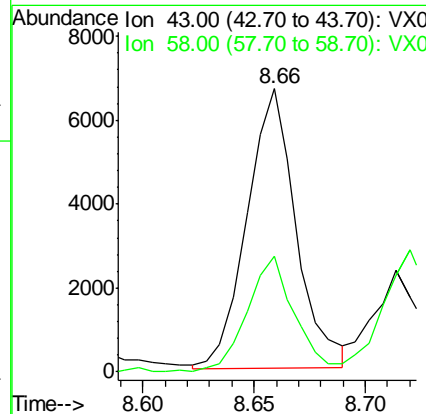
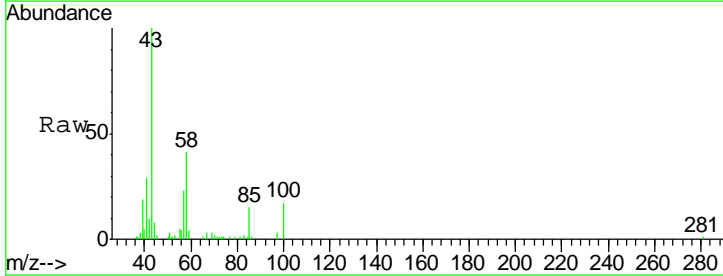
Instrument :
 MSVOA_X
ClientSampled :
 S10-0139

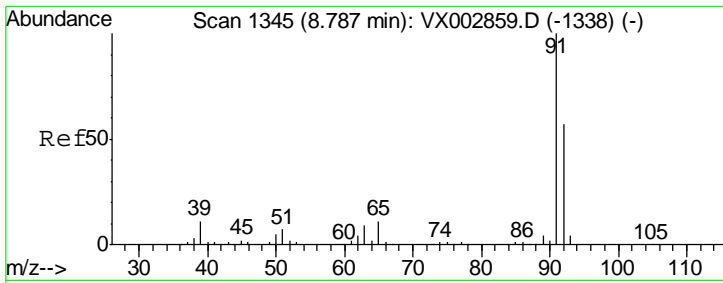
Tgt Ion	Resp	Lower	Upper
98	516797		
100	63.8	50.9	76.3



#51
 4-Methyl-2-Pentanone
 Concen: 2.25 ug/l
 RT: 8.66 min Scan# 1324
 Delta R.T. 0.01 min
 Lab File: VX003150.D
 Acq: 03 Jul 2018 15:52

Tgt Ion	Resp	Lower	Upper
43	10205		
58	40.1	28.6	42.8

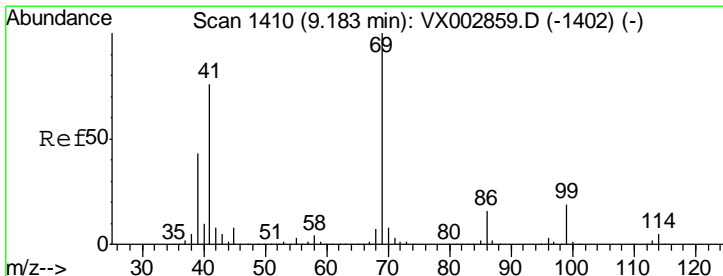
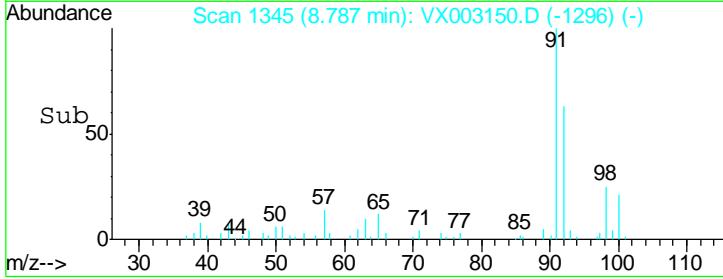
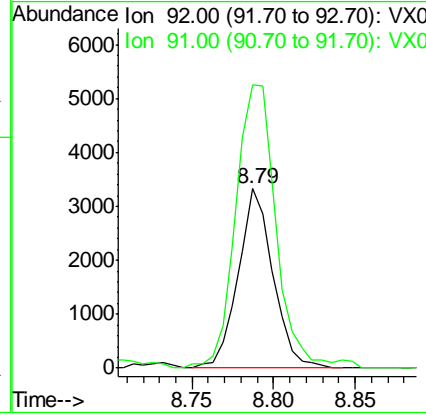
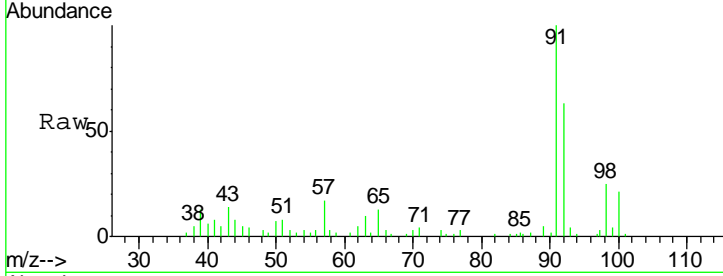




#52
 Toluene
 Concen: 0.66 ug/l
 RT: 8.79 min Scan# 1345
 Delta R.T. 0.00 min
 Lab File: VX003150.D
 Acq: 03 Jul 2018 15:52

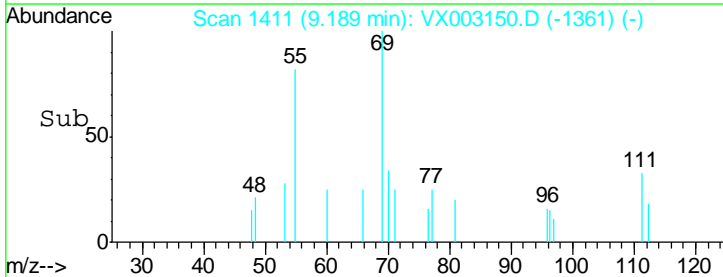
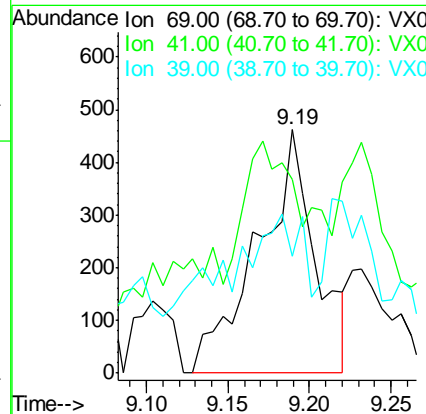
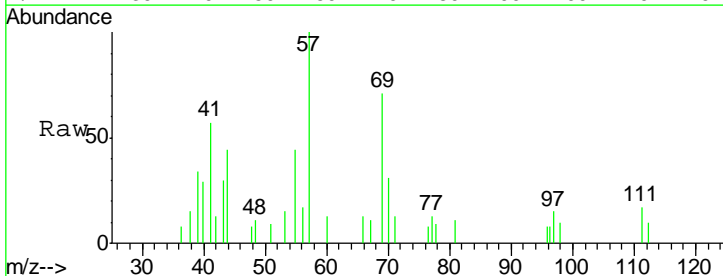
Instrument :
 MSVOA_X
 ClientSampled :
 S10-0139

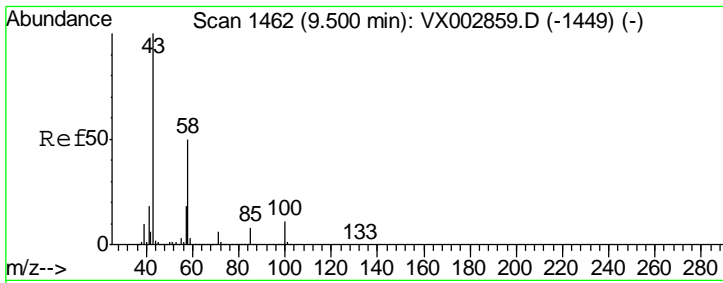
Tgt Ion: 92 Resp: 4953
 Ion Ratio Lower Upper
 92 100
 91 183.8 140.4 210.6



#56
 Ethyl methacrylate
 Concen: 0.25 ug/l
 RT: 9.19 min Scan# 1411
 Delta R.T. 0.01 min
 Lab File: VX003150.D
 Acq: 03 Jul 2018 15:52

Tgt Ion: 69 Resp: 1126
 Ion Ratio Lower Upper
 69 100
 41 56.9 60.3 90.5#
 39 29.1 35.8 53.8#

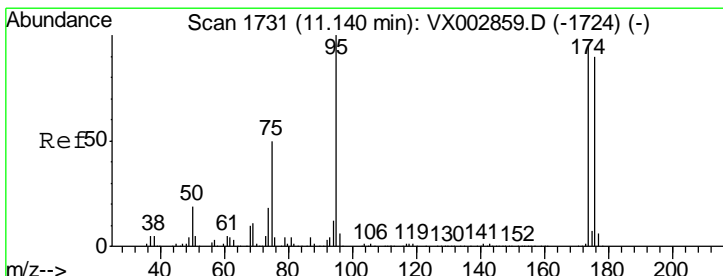
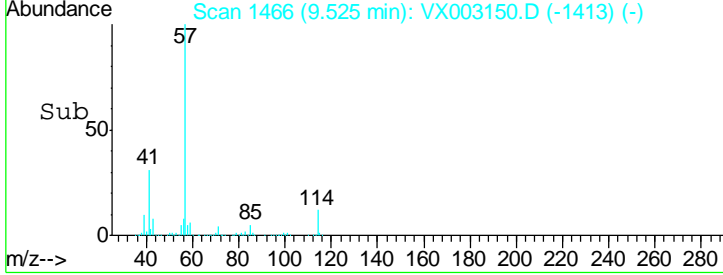
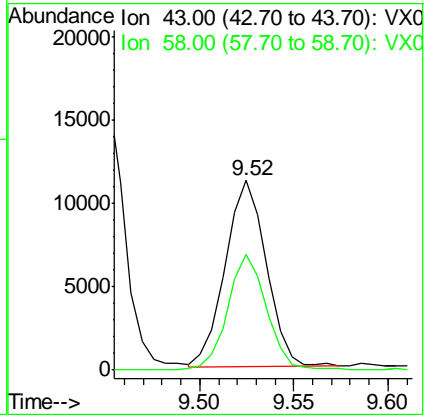
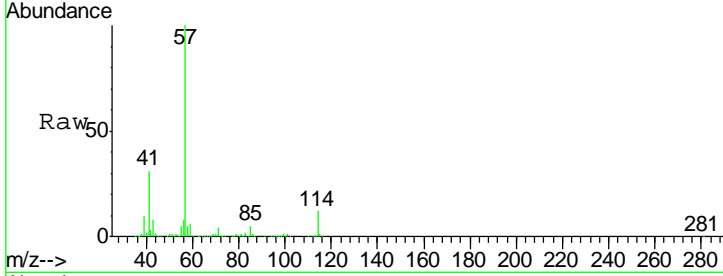




#59
 2-Hexanone
 Concen: 4.89 ug/l
 RT: 9.52 min Scan# 1466
 Delta R.T. 0.02 min
 Lab File: VX003150.D
 Acq: 03 Jul 2018 15:52

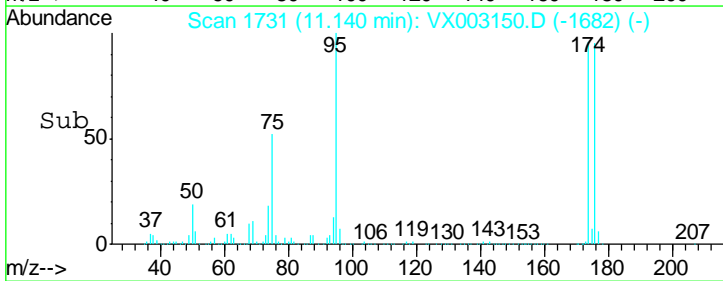
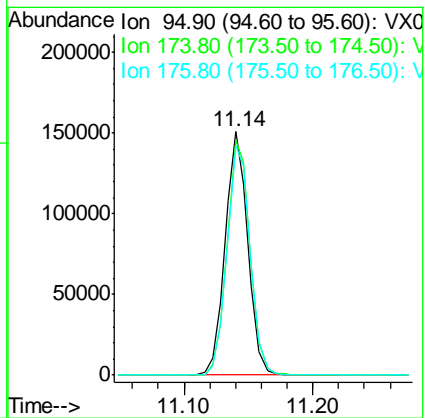
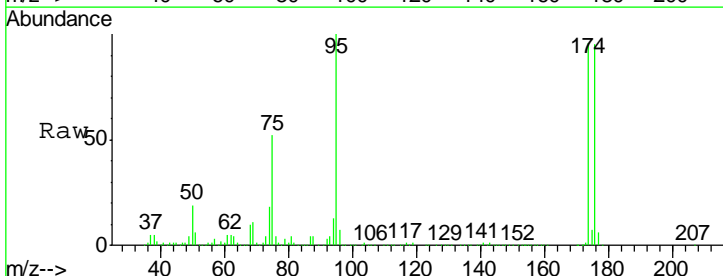
Instrument :
 MSVOA_X
ClientSampled :
 S10-0139

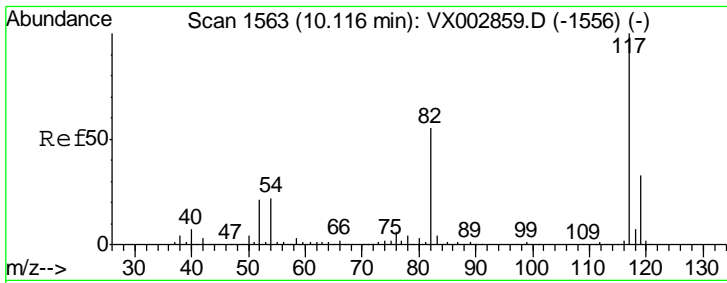
Tgt Ion: 43 Resp: 16889
 Ion Ratio Lower Upper
 43 100
 58 59.1 24.6 73.6



#62
 4-Bromofluorobenzene
 Concen: 45.59 ug/l
 RT: 11.14 min Scan# 1731
 Delta R.T. 0.00 min
 Lab File: VX003150.D
 Acq: 03 Jul 2018 15:52

Tgt Ion: 95 Resp: 186384
 Ion Ratio Lower Upper
 95 100
 174 98.3 0.0 187.4
 176 96.8 0.0 181.0

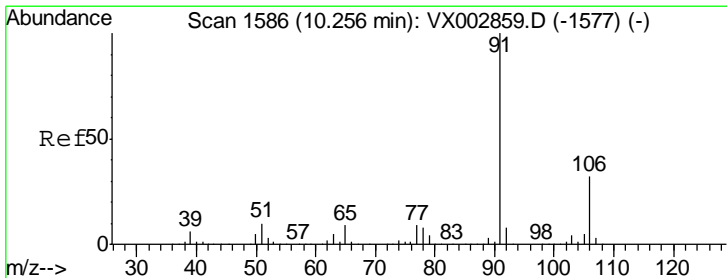
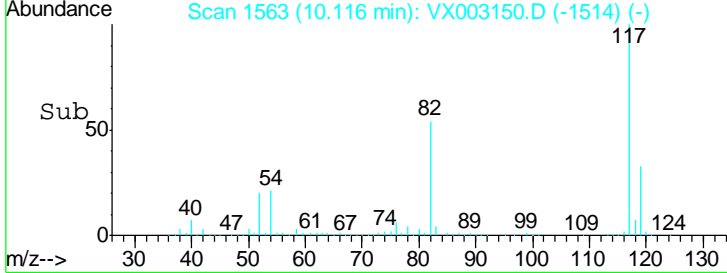
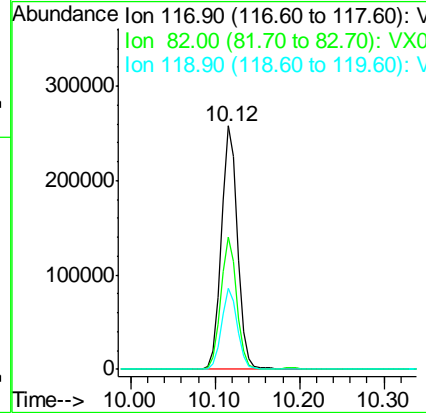
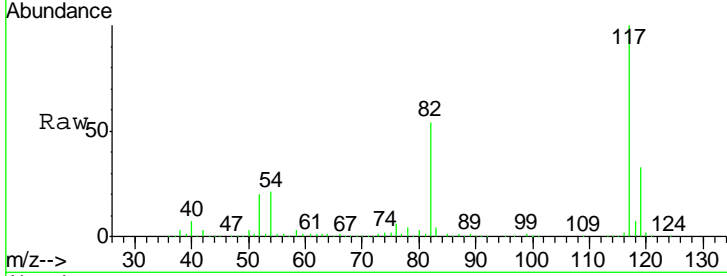




#63
 Chlorobenzene-d5
 Concen: 50.00 ug/l
 RT: 10.12 min Scan# 1563
 Delta R.T. 0.00 min
 Lab File: VX003150.D
 Acq: 03 Jul 2018 15:52

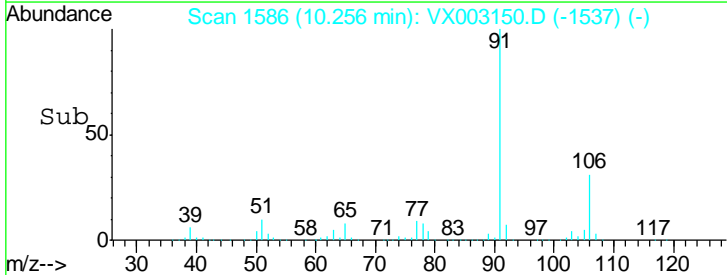
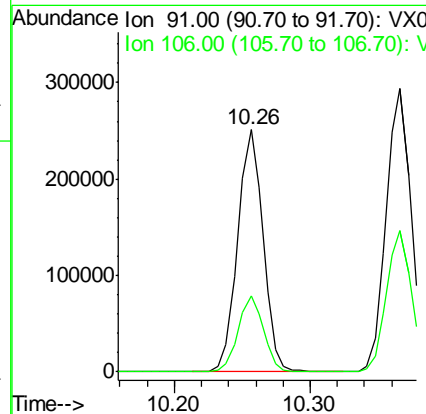
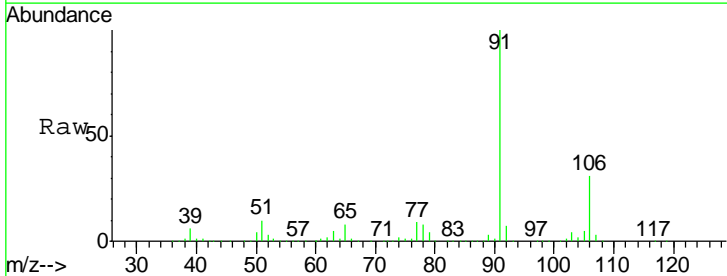
Instrument :
 MSVOA_X
 ClientSampled :
 S10-0139

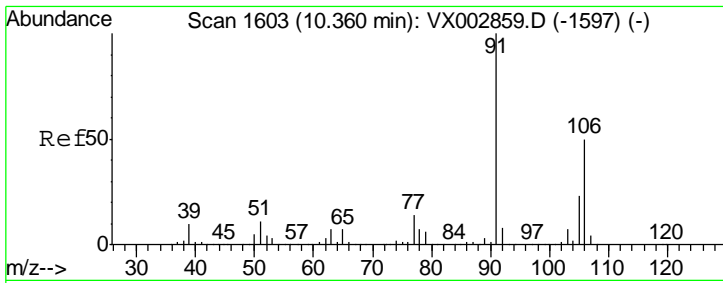
Tgt Ion	Resp	Lower	Upper
117	344944		
82	54.3	45.0	67.4
119	33.3	25.8	38.6



#67
 Ethyl Benzene
 Concen: 22.62 ug/l
 RT: 10.26 min Scan# 1586
 Delta R.T. 0.00 min
 Lab File: VX003150.D
 Acq: 03 Jul 2018 15:52

Tgt Ion	Resp	Lower	Upper
91	327371		
106	31.5	25.5	38.3

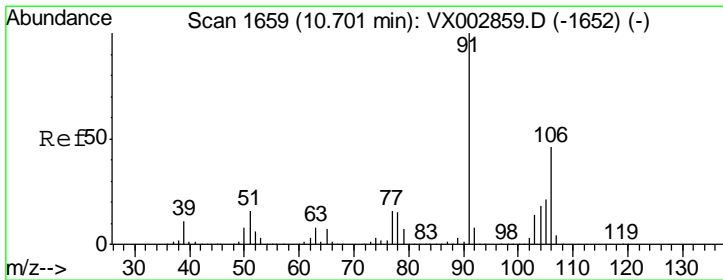
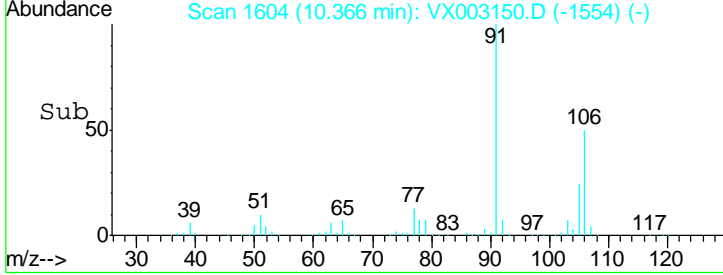
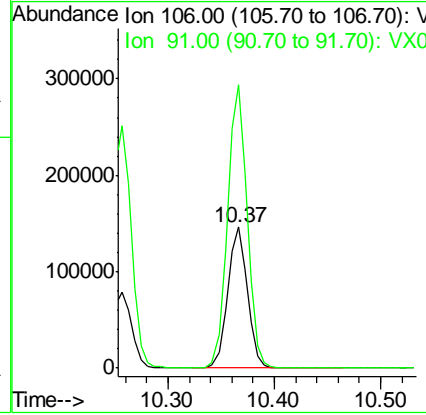
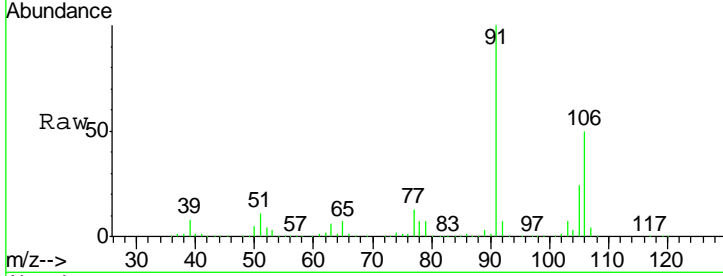




#68
 m/p-Xylenes
 Concen: 33.74 ug/l
 RT: 10.37 min Scan# 1604
 Delta R.T. 0.01 min
 Lab File: VX003150.D
 Acq: 03 Jul 2018 15:52

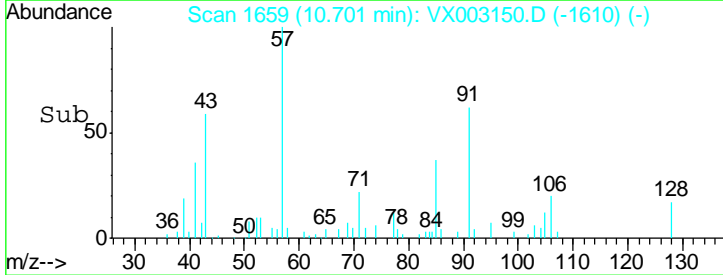
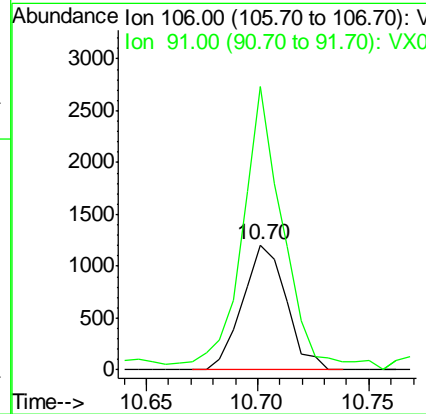
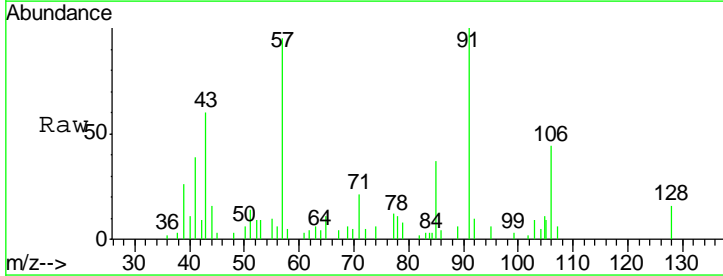
Instrument : MSVOA_X
 ClientSampled : S10-0139

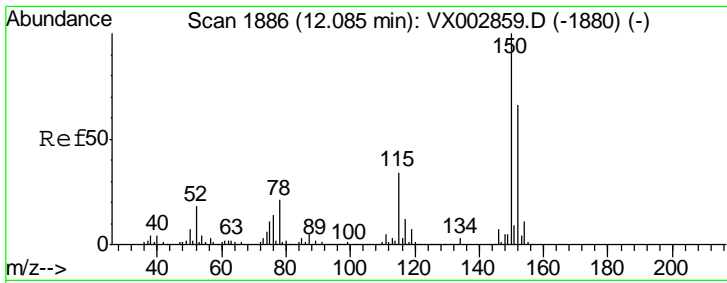
Tgt Ion:106 Resp: 188222
 Ion Ratio Lower Upper
 106 100
 91 200.6 163.4 245.2



#69
 o-Xylene
 Concen: 0.30 ug/l
 RT: 10.70 min Scan# 1659
 Delta R.T. 0.00 min
 Lab File: VX003150.D
 Acq: 03 Jul 2018 15:52

Tgt Ion:106 Resp: 1645
 Ion Ratio Lower Upper
 106 100
 91 215.0 108.2 324.6

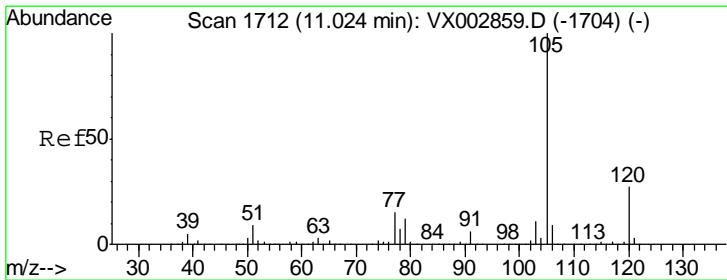
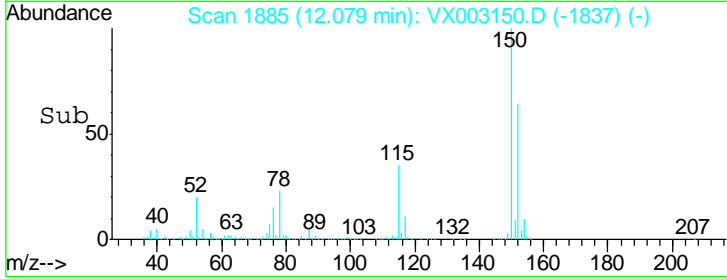
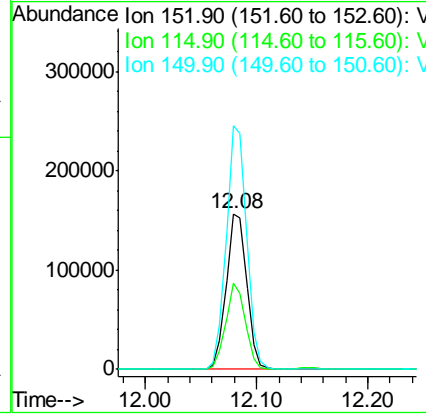
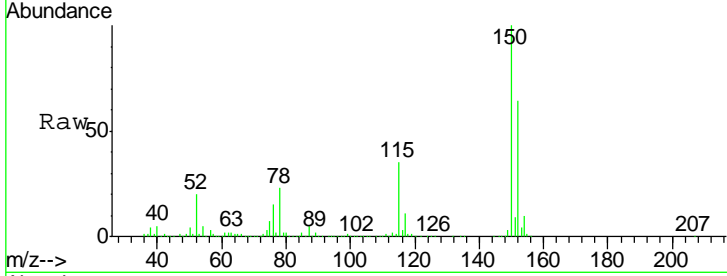




#72
 1,4-Dichlorobenzene-d4
 Concen: 50.00 ug/l
 RT: 12.08 min Scan# 1885
 Delta R.T. -0.01 min
 Lab File: VX003150.D
 Acq: 03 Jul 2018 15:52

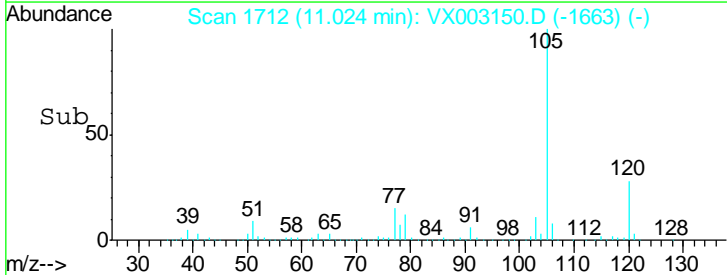
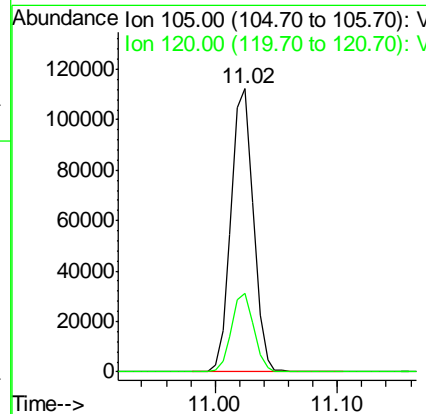
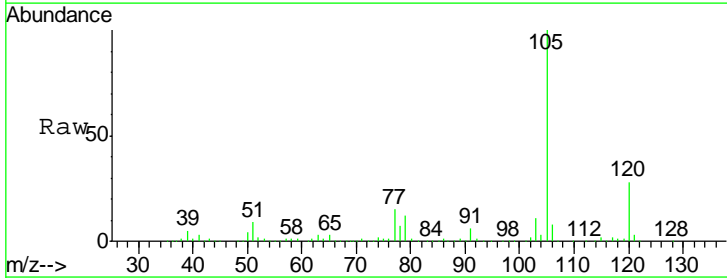
Instrument :
 MSVOA_X
 ClientSampled :
 S10-0139

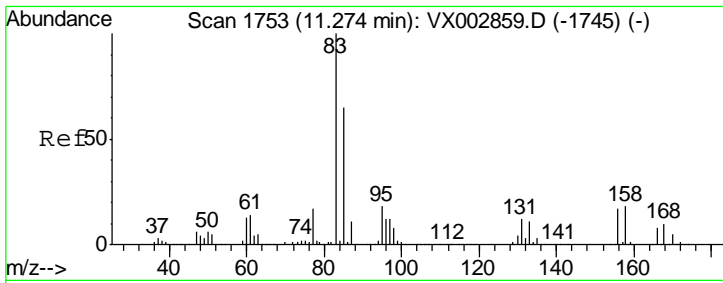
Tgt Ion	Resp	Lower	Upper
152	100		
115	53.1	40.1	120.2
150	155.6	0.0	347.2



#73
 Isopropylbenzene
 Concen: 10.59 ug/l
 RT: 11.02 min Scan# 1712
 Delta R.T. 0.00 min
 Lab File: VX003150.D
 Acq: 03 Jul 2018 15:52

Tgt Ion	Resp	Lower	Upper
105	100		
120	27.8	13.5	40.4

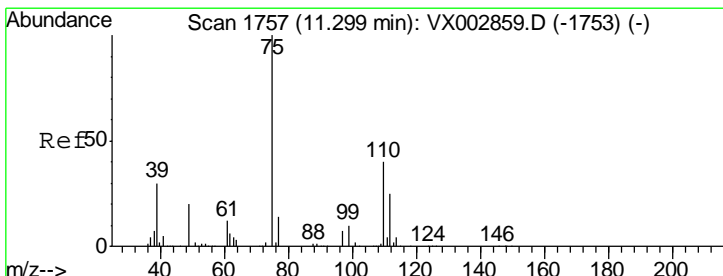
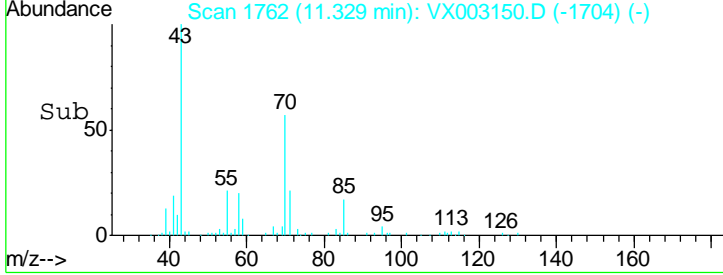
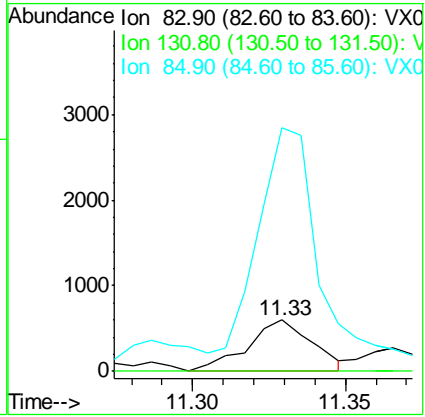
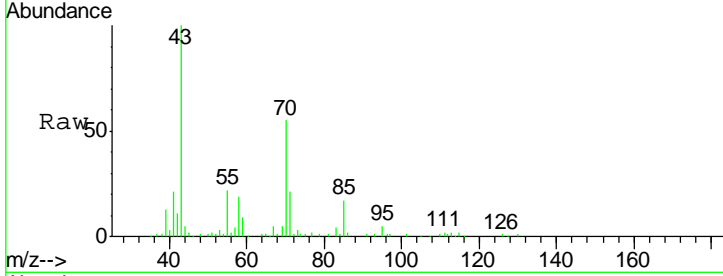




#75
 1,1,2,2-Tetrachloroethane
 Concen: 0.21 ug/l
 RT: 11.33 min Scan# 1762
 Delta R.T. 0.05 min
 Lab File: VX003150.D
 Acq: 03 Jul 2018 15:52

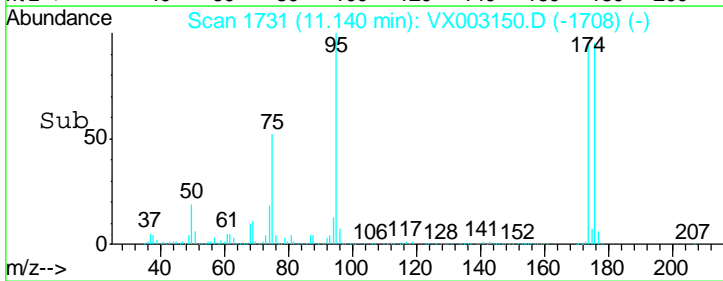
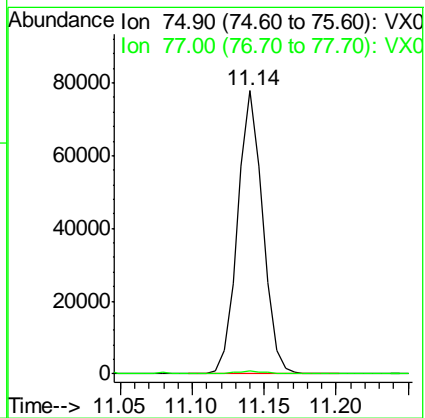
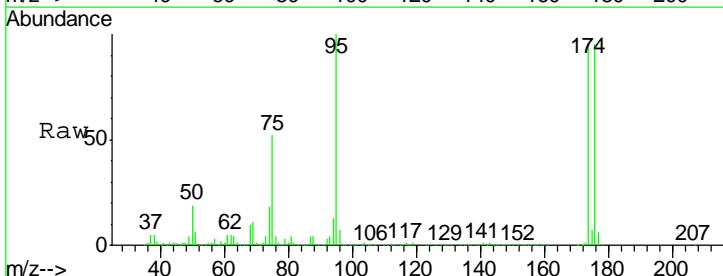
Instrument : MSVOA_X
 ClientSampled : S10-0139

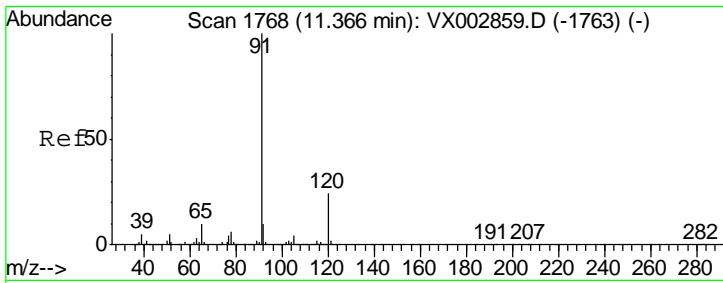
Tgt Ion	Resp	Lower	Upper
83	100		
131	0.0	5.6	16.8#
85	430.5	32.4	97.2#



#76
 1,2,3-Trichloropropane
 Concen: 26.24 ug/l
 RT: 11.14 min Scan# 1731
 Delta R.T. -0.16 min
 Lab File: VX003150.D
 Acq: 03 Jul 2018 15:52

Tgt Ion	Resp	Lower	Upper
75	100		
77	1.5	22.8	68.3#

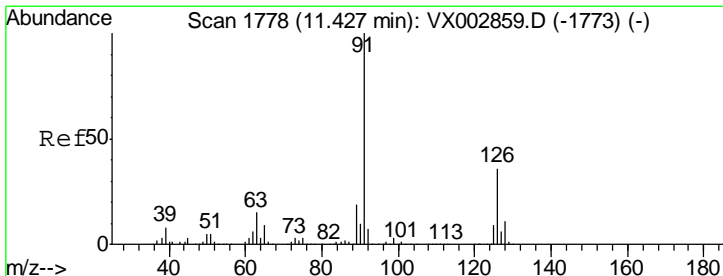
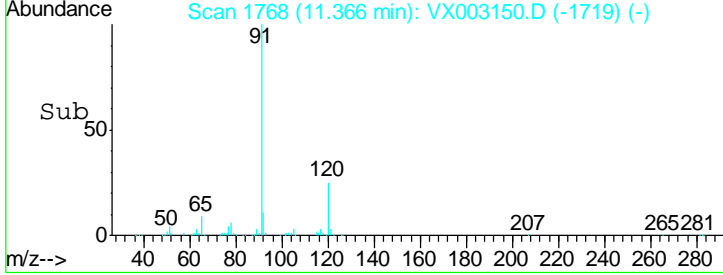
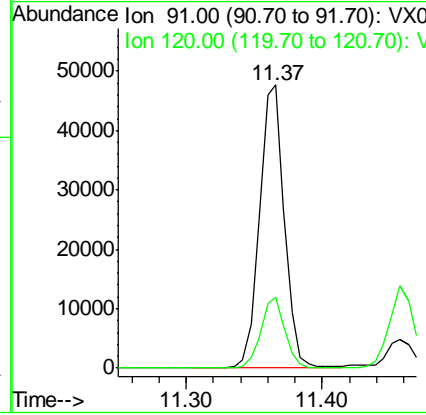
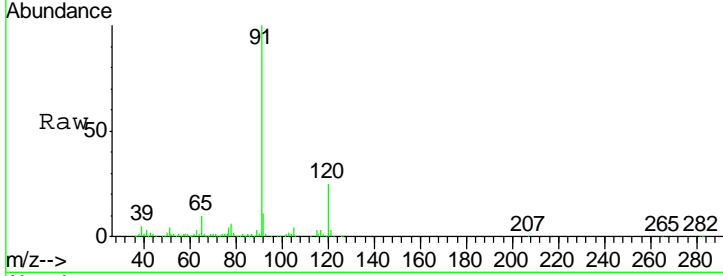




#78
 n-propylbenzene
 Concen: 4.02 ug/l
 RT: 11.37 min Scan# 1768
 Delta R.T. 0.00 min
 Lab File: VX003150.D
 Acq: 03 Jul 2018 15:52

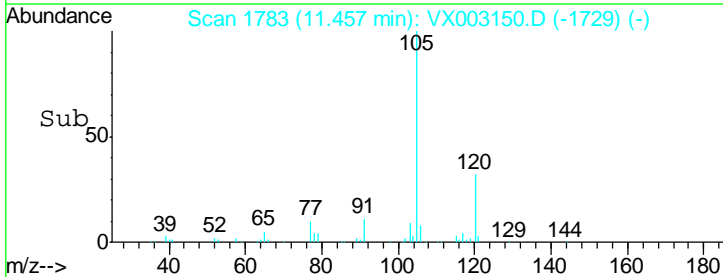
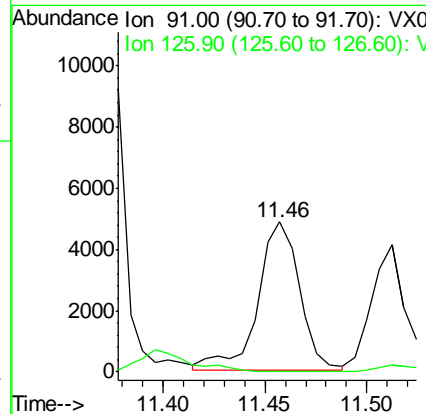
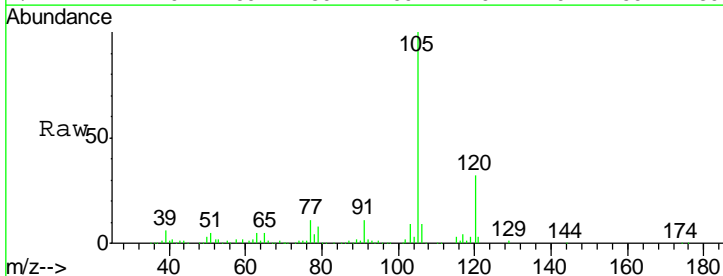
Instrument : MSVOA_X
 ClientSampled : S10-0139

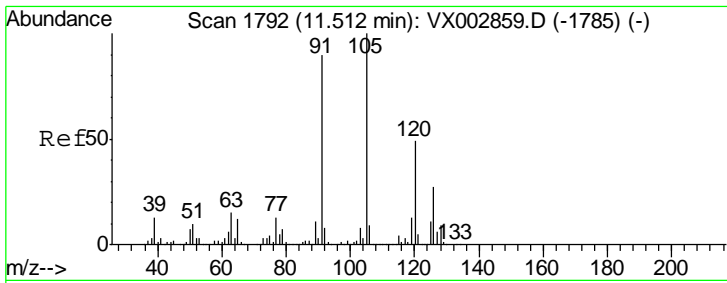
Tgt Ion	Resp	Lower	Upper
91	100		
120	24.2	11.8	35.4



#79
 2-Chlorotoluene
 Concen: 0.75 ug/l
 RT: 11.46 min Scan# 1783
 Delta R.T. 0.03 min
 Lab File: VX003150.D
 Acq: 03 Jul 2018 15:52

Tgt Ion	Resp	Lower	Upper
91	100		
126	0.0	17.7	53.1#

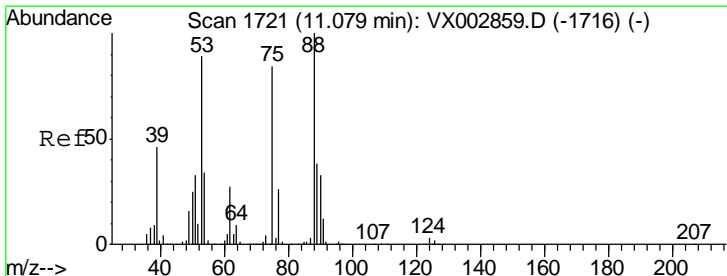
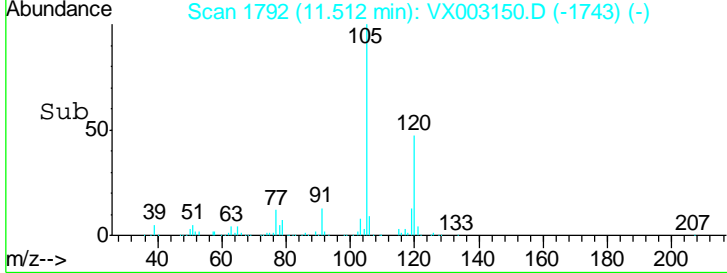
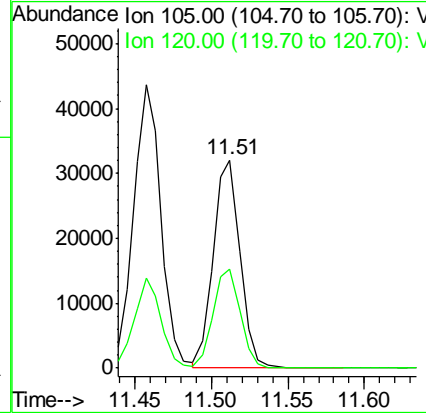
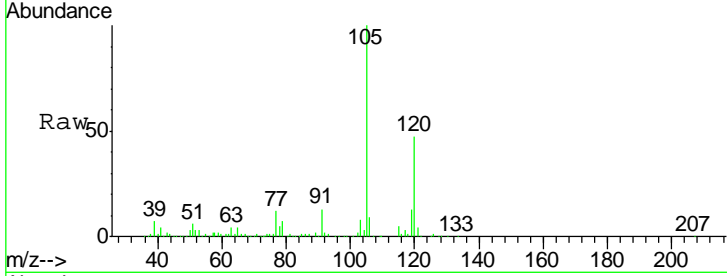




#80
 1,3,5-Trimethylbenzene
 Concen: 3.47 ug/l
 RT: 11.51 min Scan# 1792
 Delta R.T. 0.00 min
 Lab File: VX003150.D
 Acq: 03 Jul 2018 15:52

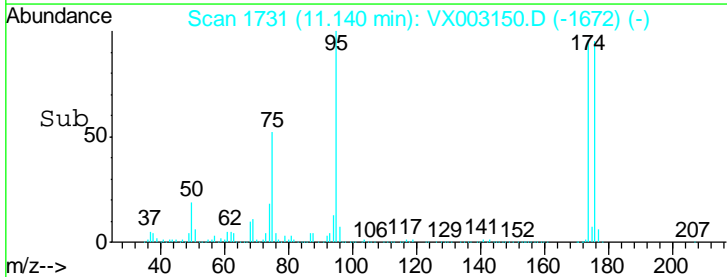
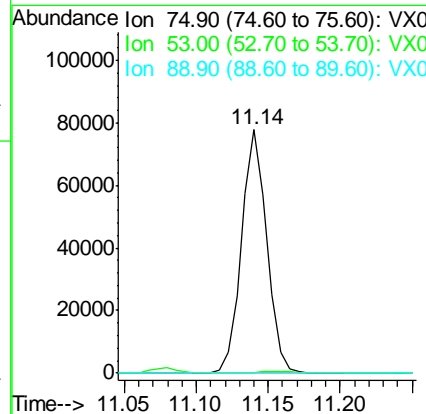
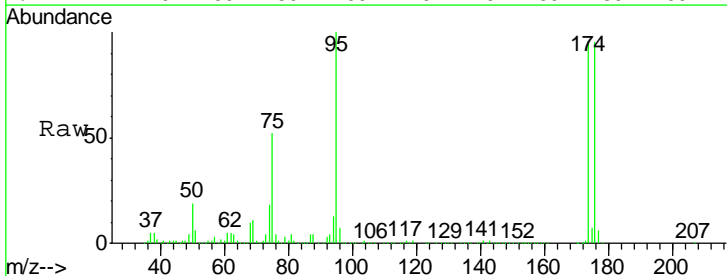
Instrument : MSVOA_X
 ClientSampled : S10-0139

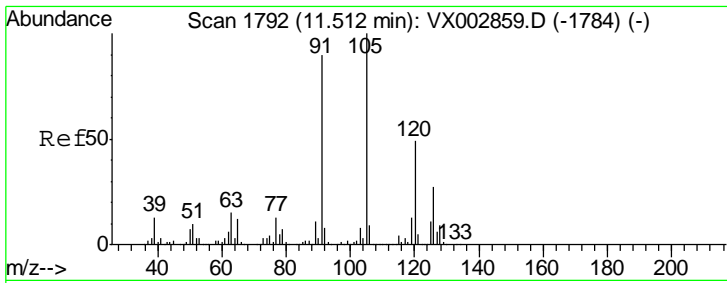
Tgt Ion: 105 Resp: 39246
 Ion Ratio Lower Upper
 105 100
 120 48.3 24.4 73.4



#81
 trans-1,4-Dichloro-2-butene
 Concen: 74.37 ug/l
 RT: 11.14 min Scan# 1731
 Delta R.T. 0.06 min
 Lab File: VX003150.D
 Acq: 03 Jul 2018 15:52

Tgt Ion: 75 Resp: 94883
 Ion Ratio Lower Upper
 75 100
 53 0.7 86.8 130.2#
 89 0.0 38.2 57.2#

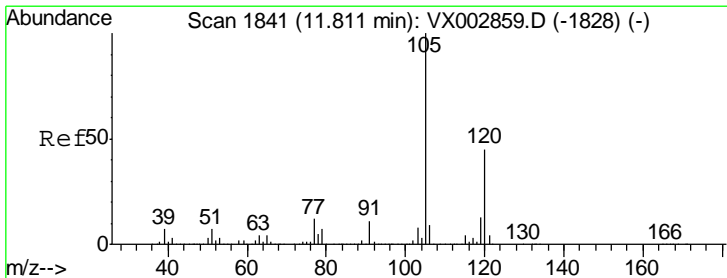
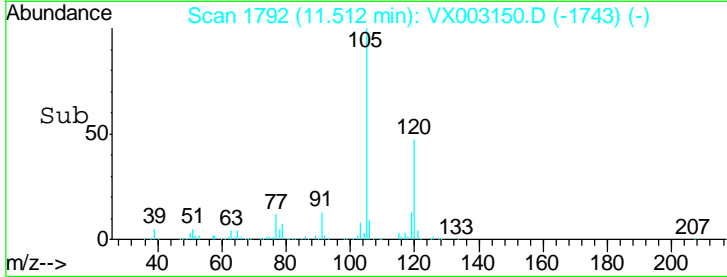
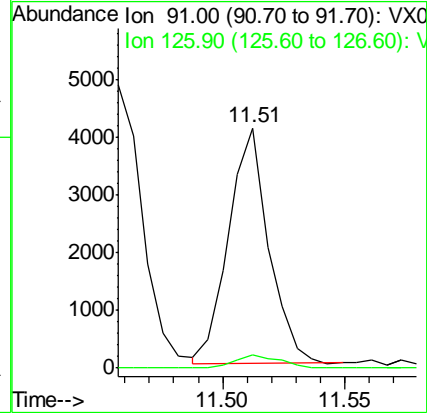
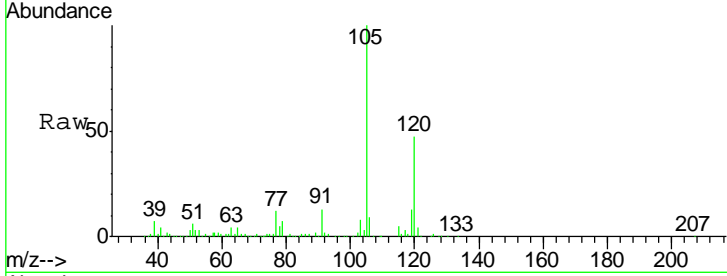




#82
 4-Chlorotoluene
 Concen: 0.43 ug/l
 RT: 11.51 min Scan# 1792
 Delta R.T. 0.00 min
 Lab File: VX003150.D
 Acq: 03 Jul 2018 15:52

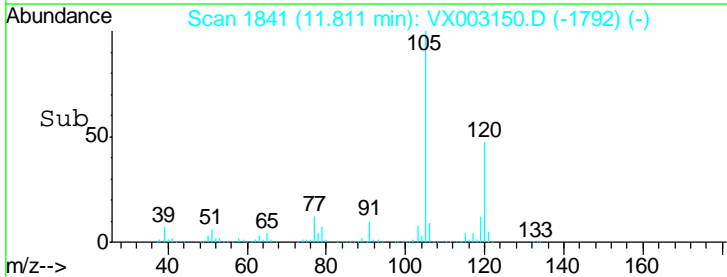
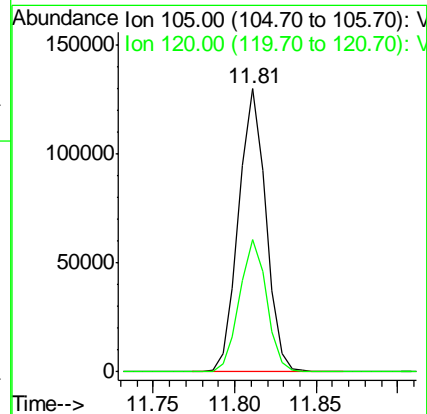
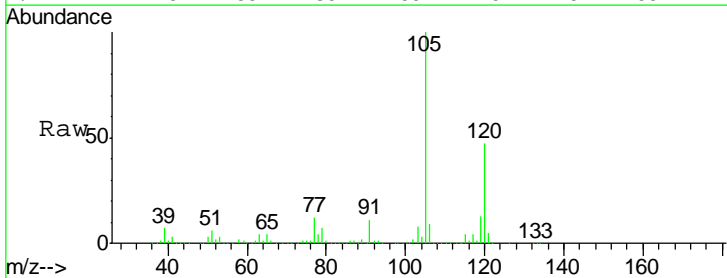
Instrument :
 MSVOA_X
 ClientSampled :
 S10-0139

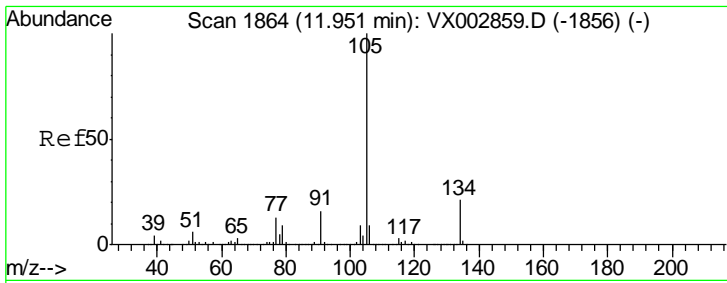
Tgt Ion: 91 Resp: 4662
 Ion Ratio Lower Upper
 91 100
 126 6.2 15.4 46.4#



#84
 1,2,4-Trimethylbenzene
 Concen: 12.85 ug/l
 RT: 11.81 min Scan# 1841
 Delta R.T. 0.00 min
 Lab File: VX003150.D
 Acq: 03 Jul 2018 15:52

Tgt Ion: 105 Resp: 150640
 Ion Ratio Lower Upper
 105 100
 120 47.1 22.3 66.8

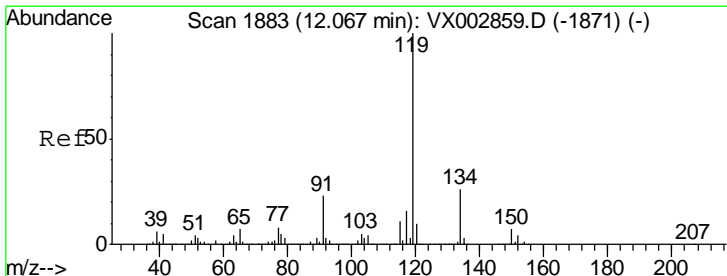
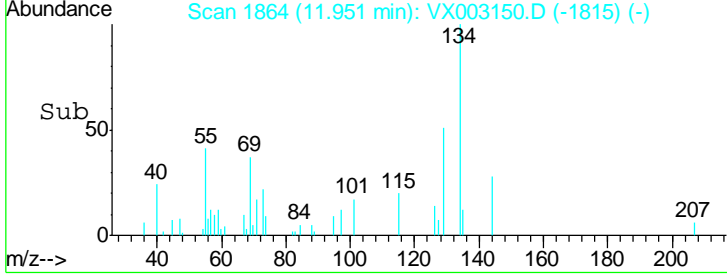
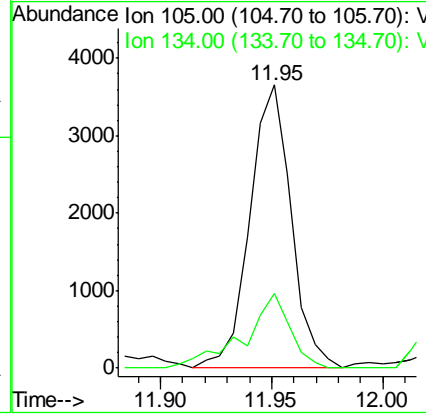
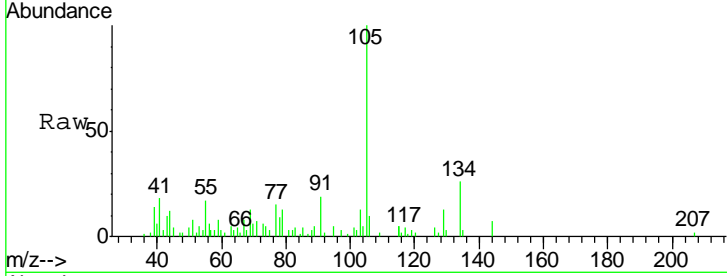




#85
 sec-Butylbenzene
 Concen: 0.35 ug/l
 RT: 11.95 min Scan# 1864
 Delta R.T. 0.00 min
 Lab File: VX003150.D
 Acq: 03 Jul 2018 15:52

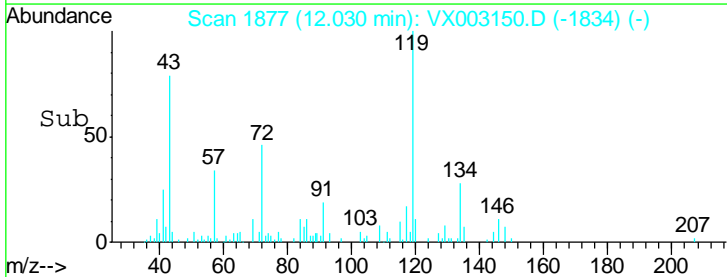
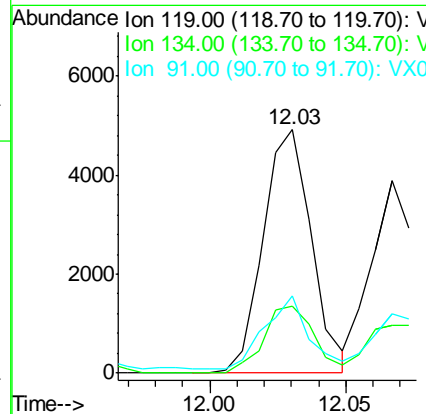
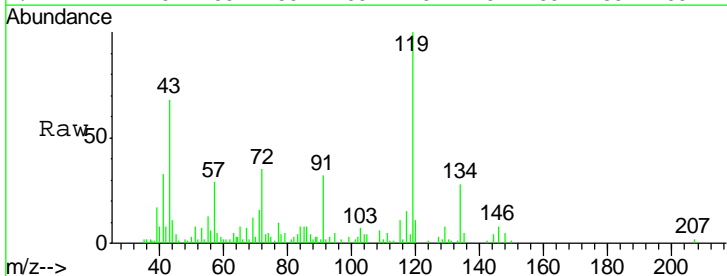
Instrument :
 MSVOA_X
 ClientSampled :
 S10-0139

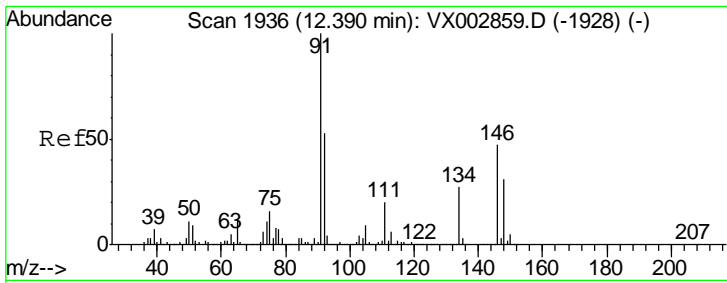
Tgt Ion: 105 Resp: 4738
 Ion Ratio Lower Upper
 105 100
 134 29.2 10.4 31.1



#86
 p-Isopropyltoluene
 Concen: 0.50 ug/l
 RT: 12.03 min Scan# 1877
 Delta R.T. -0.04 min
 Lab File: VX003150.D
 Acq: 03 Jul 2018 15:52

Tgt Ion: 119 Resp: 6047
 Ion Ratio Lower Upper
 119 100
 134 29.0 13.4 40.1
 91 27.4 11.9 35.7

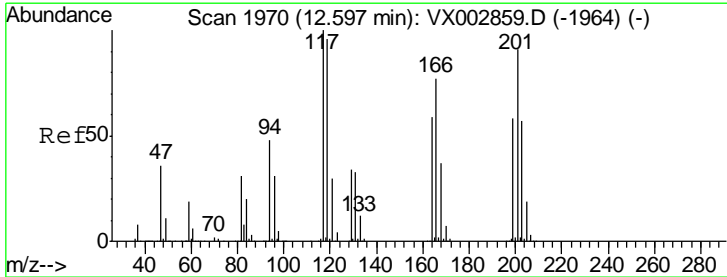
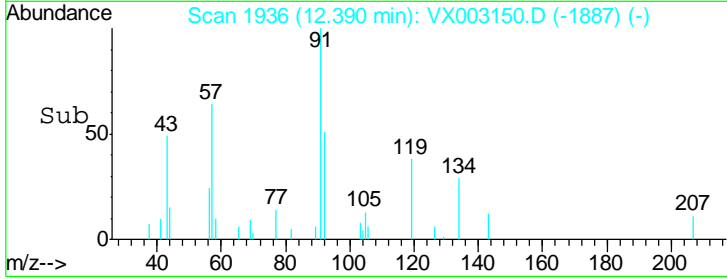
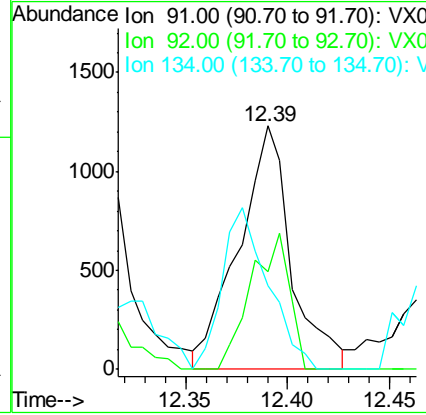
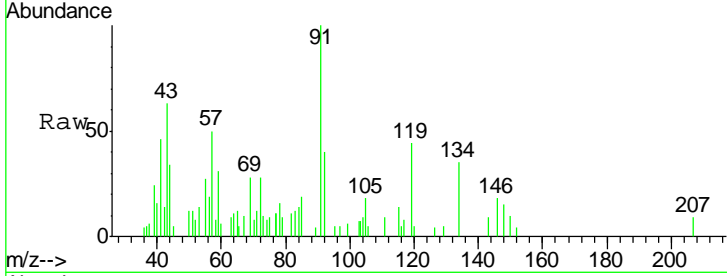




#89
 n-Butylbenzene
 Concen: 0.21 ug/l
 RT: 12.39 min Scan# 1936
 Delta R.T. 0.00 min
 Lab File: VX003150.D
 Acq: 03 Jul 2018 15:52

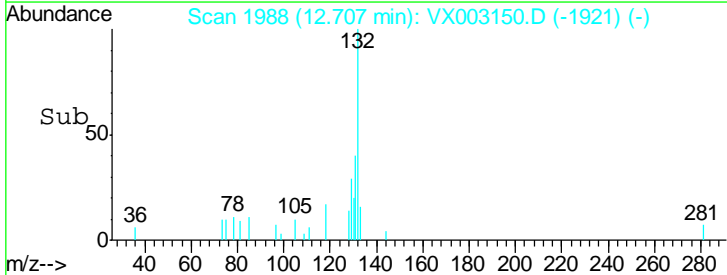
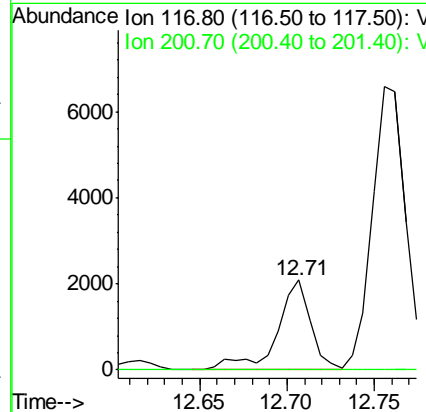
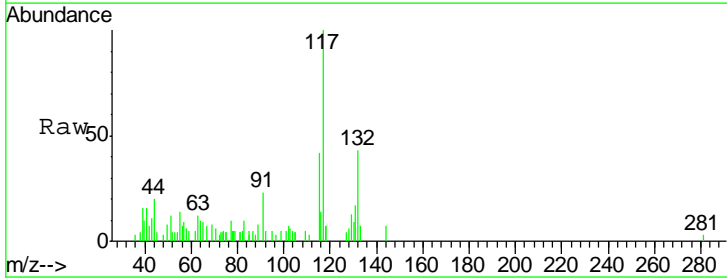
Instrument :
 MSVOA_X
 ClientSampled :
 S10-0139

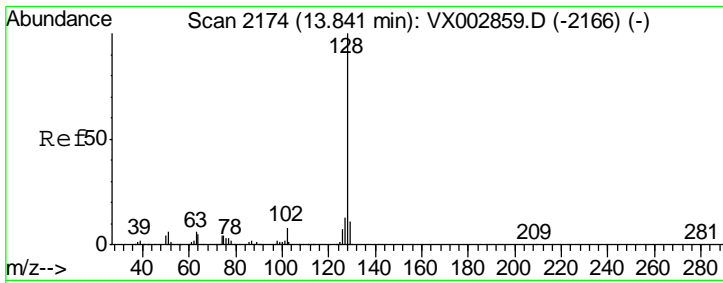
Tgt Ion	Resp	Lower	Upper
91	100		
92	40.8	26.0	78.0
134	57.9	13.5	40.5#



#90
 Hexachloroethane
 Concen: 1.57 ug/l
 RT: 12.71 min Scan# 1988
 Delta R.T. 0.11 min
 Lab File: VX003150.D
 Acq: 03 Jul 2018 15:52

Tgt Ion	Resp	Lower	Upper
117	100		
201	0.0	49.0	147.0#





#95
 Naphthalene
 Concen: 1.19 ug/l
 RT: 13.84 min Scan# 2174
 Delta R.T. 0.00 min
 Lab File: VX003150.D
 Acq: 03 Jul 2018 15:52

Instrument : MSVOA_X
 ClientSampled : S10-0139

Tot Ion: 128 Resp: 16328

Ion	Ratio	Lower	Upper
128	100		
127	13.4	10.4	15.6
129	11.5	8.6	13.0

