

Data Path : Z:\voasrv\HPCHEM1\MSVOA_X\Data\VX070318\
 Data File : VX003150.D
 Acq On : 03 Jul 2018 15:52
 Operator : JC/MD
 Sample : J3754-02
 Misc : 5.0mL/MSVOA_X/WATER
 ALS Vial : 11 Sample Multiplier: 1

Instrument :
 MSVOA_X
 ClientSampleId :
 S10-0139

Integration Parameters: RTEINT.P
 Integrator: RTE
 Smoothing : ON Filtering: 5
 Sampling : 1 Min Area: 3 % of largest Peak
 Start Thrs: 0.2 Max Peaks: 100
 Stop Thrs : 0 Peak Location: TOP

If leading or trailing edge < 100 prefer < Baseline drop else tangent >
 Peak separation: 5

Method : Z:\VOASRV\HPCHEM1\MSVOA_X\METHOD\82X062518W.M
 Title : SW846 8260

Signal : TIC

peak #	R.T. min	first scan	max scan	last scan	PK TY	peak height	corr. area	corr. % max.	% of total
1	1.075	76	80	94	rBV	533396	796676	1.79%	1.326%
2	1.788	191	197	211	rVB	2823497	3964241	8.92%	6.597%
3	2.843	361	370	380	rBV	855231	1888738	4.25%	3.143%
4	5.507	795	807	815	rBV2	166259	503595	1.13%	0.838%
5	5.672	825	834	855	rVB	253189	821111	1.85%	1.366%
6	6.159	902	914	940	rVB	16406124	44441359	100.00%	73.954%
7	6.867	1021	1030	1044	rVB	360551	831231	1.87%	1.383%
8	8.720	1327	1334	1342	rBV	869501	1362766	3.07%	2.268%
9	9.525	1460	1466	1472	rBV	316677	465209	1.05%	0.774%
10	10.116	1559	1563	1569	rVB	765815	997579	2.24%	1.660%
11	10.256	1580	1586	1592	rBV	576693	758103	1.71%	1.262%
12	10.366	1597	1604	1611	rVB	836735	1087894	2.45%	1.810%
13	11.140	1726	1731	1740	rBV	800945	1025127	2.31%	1.706%
14	12.079	1880	1885	1892	rVB	913503	1149697	2.59%	1.913%

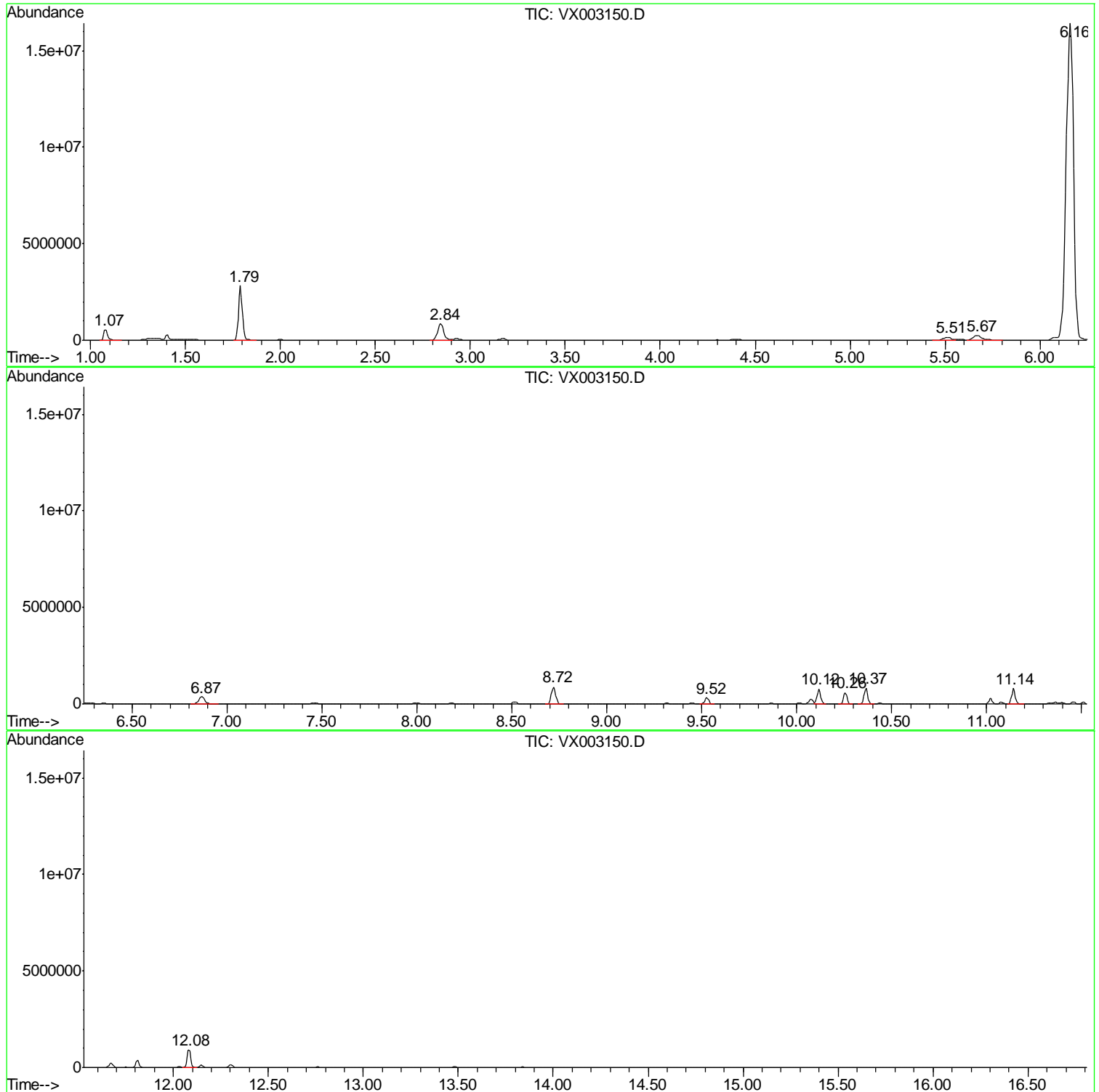
Sum of corrected areas: 60093326

Data Path : Z:\voasrv\HPCHEM1\MSVOA_X\Data\VX070318\
Data File : VX003150.D
Acq On : 03 Jul 2018 15:52
Operator : JC/MD
Sample : J3754-02
Misc : 5.0mL/MSVOA_X/WATER
ALS Vial : 11 Sample Multiplier: 1

Instrument :
MSVOA_X
ClientSampled :
S10-0139

Quant Method : Z:\VOASRV\HPCHEM1\MSVOA_X\METHOD\82X062518W.M
Quant Title : SW846 8260

TIC Library : C:\DATABASE\NIST11.L
TIC Integration Parameters: LSCINT.P



Data Path : Z:\voasrv\HPCHEM1\MSVOA_X\Data\VX070318\
Data File : VX003150.D
Acq On : 03 Jul 2018 15:52
Operator : JC/MD
Sample : J3754-02
Misc : 5.0mL/MSVOA_X/WATER
ALS Vial : 11 Sample Multiplier: 1

Instrument :
MSVOA_X
ClientSampleId :
S10-0139

Quant Method : Z:\VOASRV\HPCHEM1\MSVOA_X\METHOD\82X062518W.M
Quant Title : SW846 8260

TIC Library : C:\DATABASE\NIST11.L
TIC Integration Parameters: LSCINT.P

No Library Search Compounds Detected

Data Path : Z:\voasrv\HPCHEM1\MSVOA_X\Data\VX070318\
Data File : VX003150.D
Acq On : 03 Jul 2018 15:52
Operator : JC/MD
Sample : J3754-02
Misc : 5.0mL/MSVOA_X/WATER
ALS Vial : 11 Sample Multiplier: 1

Instrument :
MSVOA_X
ClientSampleId :
S10-0139

Quant Method : Z:\VOASRV\HPCHEM1\MSVOA_X\METHOD\82X062518W.M
Quant Title : SW846 8260

TIC Library : C:\DATABASE\NIST11.L
TIC Integration Parameters: LSCINT.P

TIC Top Hit name	RT	EstConc	Units	Response	--Internal Standard--			
					#	RT	Resp	Conc
