

Data Path : Z:\voasrv\HPCHEM1\MSVOA_X\Data\VX070524\
 Data File : VX042204.D
 Acq On : 05 Jul 2024 11:24
 Operator : JC/MD
 Sample : P3167-04
 Misc : 5.0mL/MSVOA_X/WATER
 ALS Vial : 7 Sample Multiplier: 1

Instrument :
 MSVOA_X
 ClientSampleId :

Quant Time: Jul 05 23:19:39 2024
 Quant Method : Z:\voasrv\HPCHEM1\MSVOA_X\Method\82X061824W.M
 Quant Title : SW846 8260
 QLast Update : Fri Jun 21 23:51:58 2024
 Response via : Initial Calibration

Compound	R.T.	QIon	Response	Conc	Units	Dev(Min)

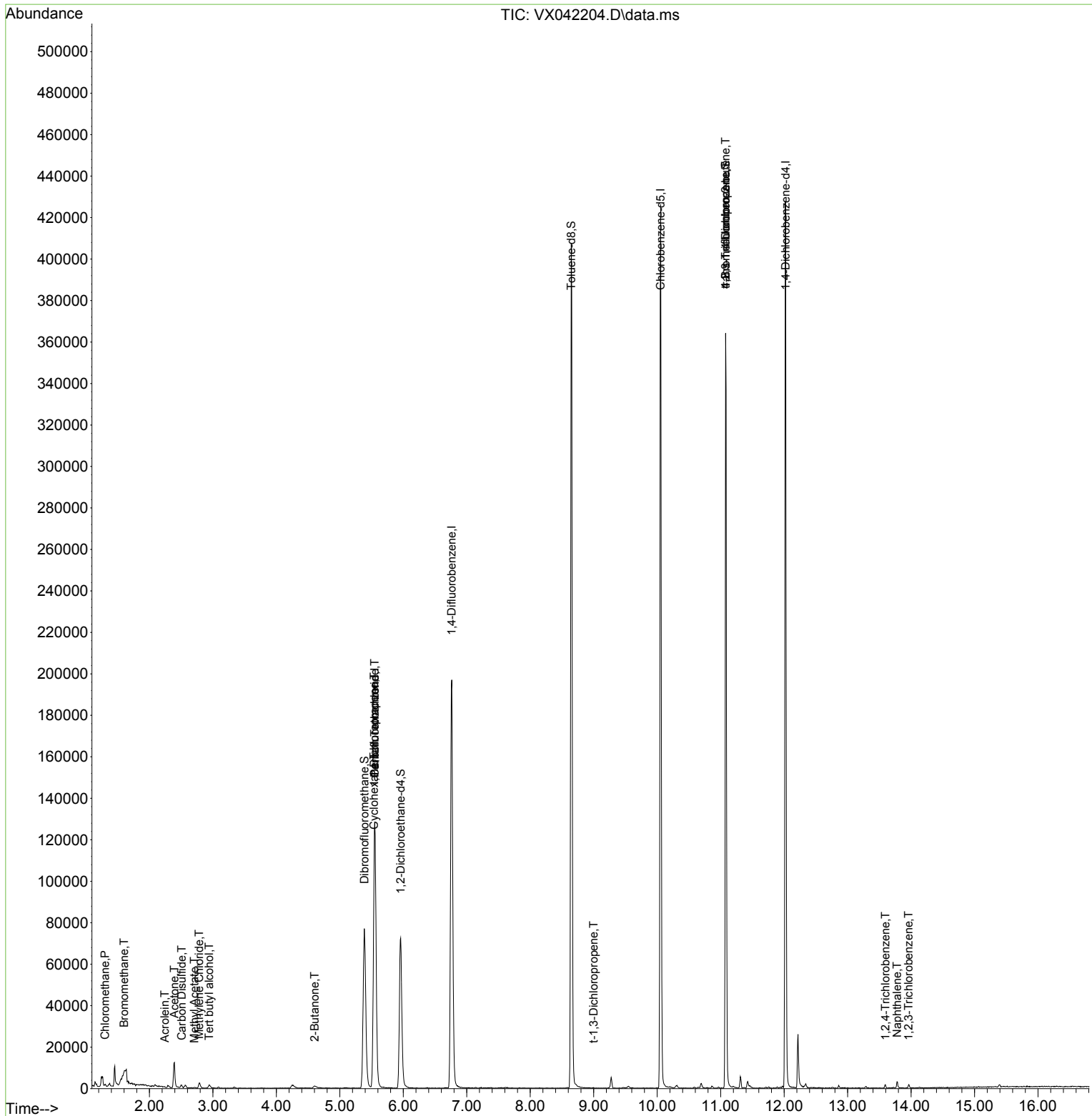
Internal Standards						
1) Pentafluorobenzene	5.550	168	144193	50.000	ug/l	# 0.00
34) 1,4-Difluorobenzene	6.763	114	222022	50.000	ug/l	0.00
63) Chlorobenzene-d5	10.055	117	218824	50.000	ug/l	0.00
72) 1,4-Dichlorobenzene-d4	12.024	152	106061	50.000	ug/l	0.00
System Monitoring Compounds						
33) 1,2-Dichloroethane-d4	5.958	65	69542	41.824	ug/l	0.00
Spiked Amount	50.000	Range 78 - 117	Recovery	=	83.640%	
35) Dibromofluoromethane	5.385	113	68243	43.319	ug/l	0.00
Spiked Amount	50.000	Range 75 - 124	Recovery	=	86.640%	
50) Toluene-d8	8.647	98	259665	46.919	ug/l	0.00
Spiked Amount	50.000	Range 92 - 112	Recovery	=	93.840%	
62) 4-Bromofluorobenzene	11.079	95	97095	47.593	ug/l	0.00
Spiked Amount	50.000	Range 83 - 123	Recovery	=	95.180%	
Target Compounds						
						Qvalue
3) Chloromethane	1.300	50	897	0.651	ug/l	# 86
5) Bromomethane	1.599	94	545	0.799	ug/l	93
6) Chloroethane	1.666	64	68	Below Cal		# 43
11) Tert butyl alcohol	2.940	59	1007	3.191	ug/l	# 78
13) Acrolein	2.239	56	195	0.551	ug/l	# 76
16) Acetone	2.392	43	14144	19.373	ug/l	# 88
17) Carbon Disulfide	2.508	76	2024	0.798	ug/l	# 87
18) Methyl Acetate	2.709	43	505	0.254	ug/l	# 62
20) Methylene Chloride	2.782	84	1473	0.921	ug/l	# 80
25) 2-Butanone	4.605	43	2085	1.836	ug/l	98
31) Cyclohexane	5.537	56	2011	1.034	ug/l	# 1
36) 1,1-Dichloropropene	5.544	75	8296	4.959	ug/l	# 51
38) Carbon Tetrachloride	5.550	117	12343	6.678	ug/l	# 16
53) t-1,3-Dichloropropene	9.000	75	68	0.926	ug/l	# 43
76) 1,2,3-Trichloropropane	11.079	75	44424	23.072	ug/l	# 39
81) trans-1,4-Dichloro-2-b...	11.079	75	44424	65.523	ug/l	# 5
93) 1,2,4-Trichlorobenzene	13.597	180	705	0.312	ug/l	88
95) Naphthalene	13.780	128	2787	1.109	ug/l	# 95
96) 1,2,3-Trichlorobenzene	13.963	180	688	0.288	ug/l	92

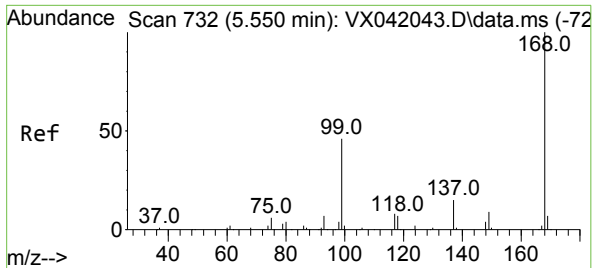
(#) = qualifier out of range (m) = manual integration (+) = signals summed

Data Path : Z:\voasrv\HPCHEM1\MSVOA_X\Data\VX070524\
 Data File : VX042204.D
 Acq On : 05 Jul 2024 11:24
 Operator : JC/MD
 Sample : P3167-04
 Misc : 5.0mL/MSVOA_X/WATER
 ALS Vial : 7 Sample Multiplier: 1

Instrument :
 MSVOA_X
 ClientSampleId :

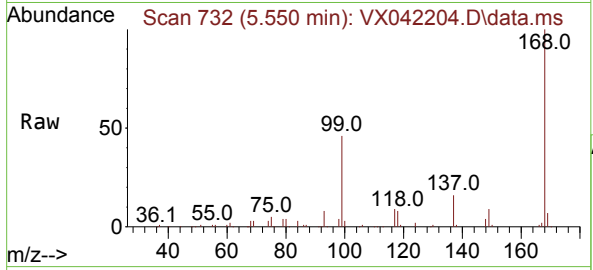
Quant Time: Jul 05 23:19:39 2024
 Quant Method : Z:\voasrv\HPCHEM1\MSVOA_X\Method\82X061824W.M
 Quant Title : SW846 8260
 QLast Update : Fri Jun 21 23:51:58 2024
 Response via : Initial Calibration



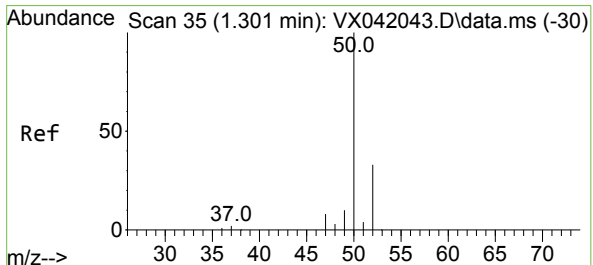
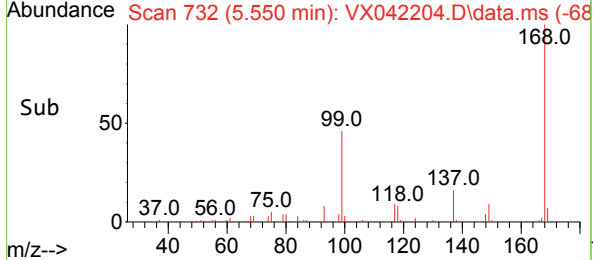
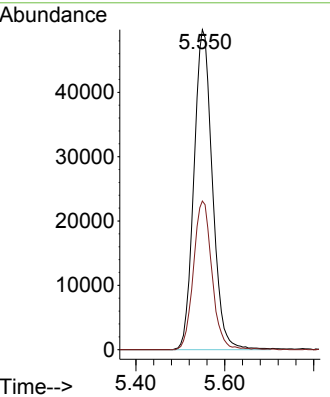


#1
 Pentafluorobenzene
 Concen: 50.000 ug/l
 RT: 5.550 min Scan# 71
 Delta R.T. -0.000 min
 Lab File: VX042204.D
 Acq: 05 Jul 2024 11:24

Instrument : MSVOA_X
 ClientSampleId :

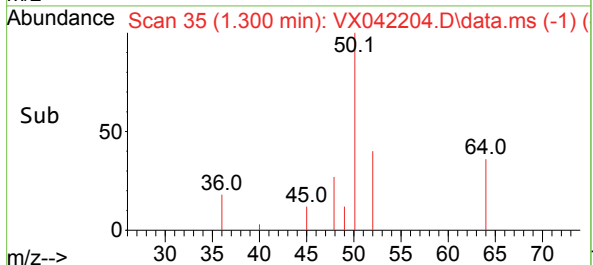
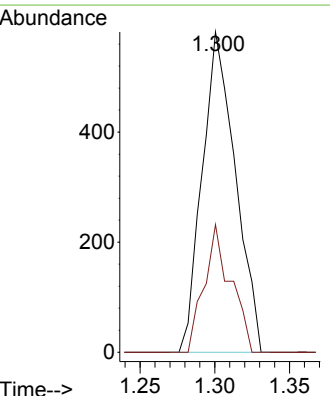
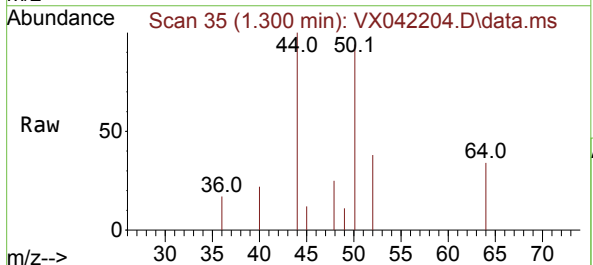


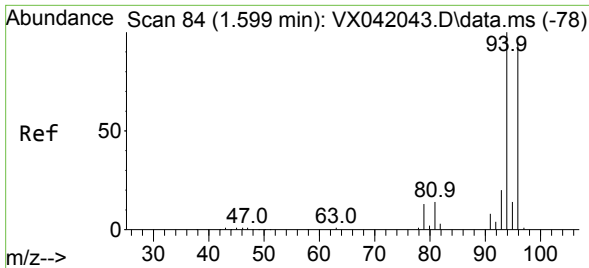
Tgt Ion:168 Resp: 144193
 Ion Ratio Lower Upper
 168 100
 99 46.4 56.6 85.0#



#3
 Chloromethane
 Concen: 0.651 ug/l
 RT: 1.300 min Scan# 35
 Delta R.T. -0.006 min
 Lab File: VX042204.D
 Acq: 05 Jul 2024 11:24

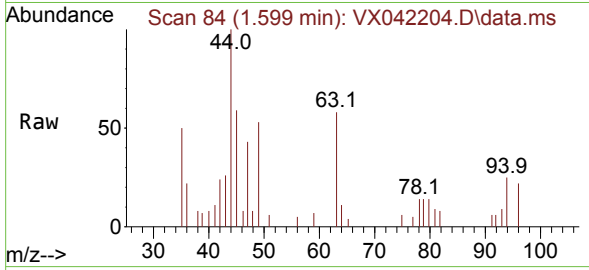
Tgt Ion: 50 Resp: 897
 Ion Ratio Lower Upper
 50 100
 52 39.9 25.5 38.3#



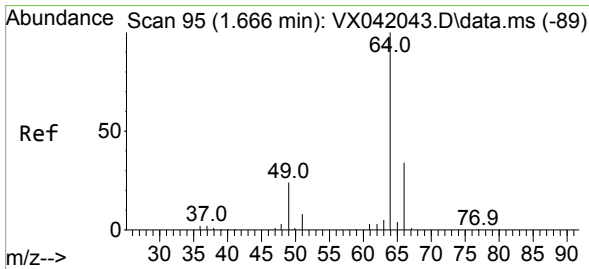
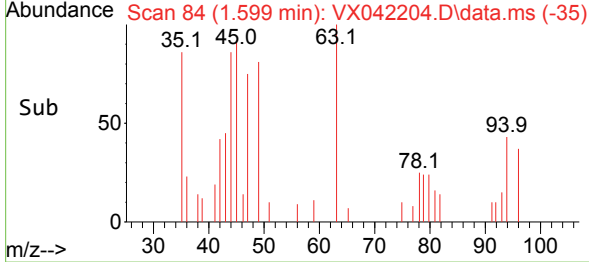
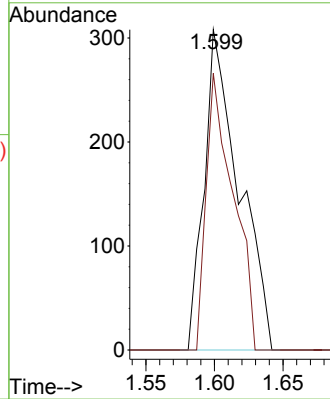


#5
 Bromomethane
 Concen: 0.799 ug/l
 RT: 1.599 min Scan# 84
 Delta R.T. 0.000 min
 Lab File: VX042204.D
 Acq: 05 Jul 2024 11:24

Instrument :
 MSVOA_X
 ClientSampleId :

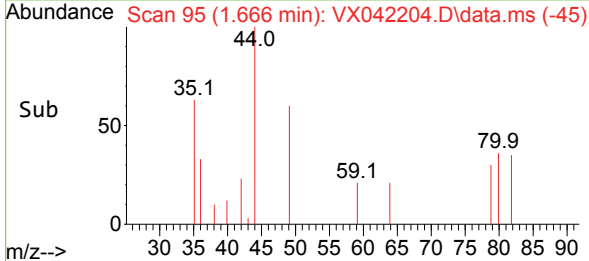
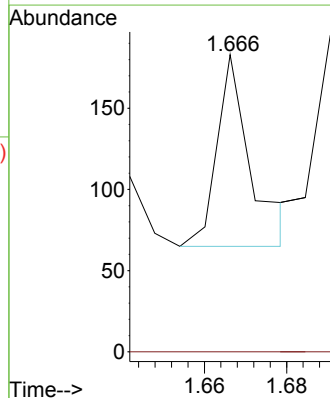
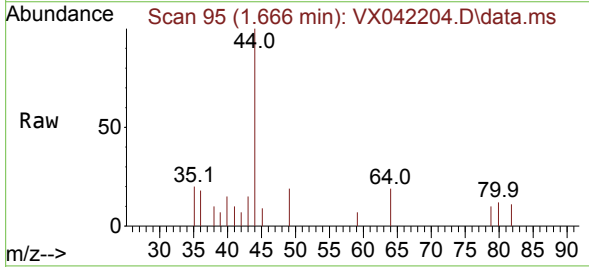


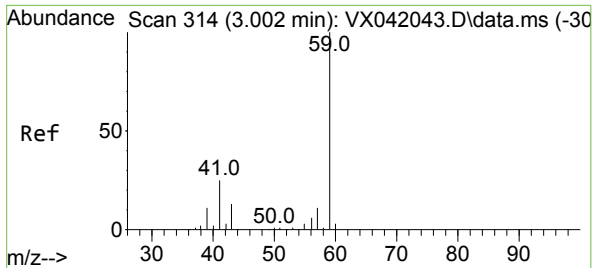
Tgt Ion: 94 Resp: 545
 Ion Ratio Lower Upper
 94 100
 96 86.4 74.6 111.8



#6
 Chloroethane
 Concen: Below Cal
 RT: 1.666 min Scan# 95
 Delta R.T. 0.006 min
 Lab File: VX042204.D
 Acq: 05 Jul 2024 11:24

Tgt Ion: 64 Resp: 68
 Ion Ratio Lower Upper
 64 100
 66 0.0 25.1 37.7#

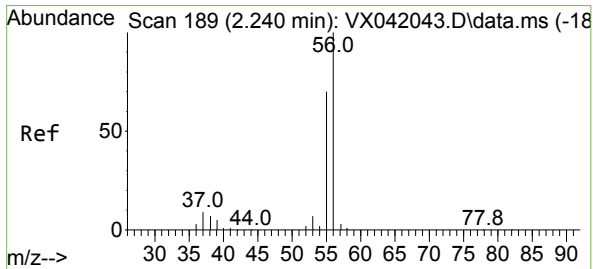
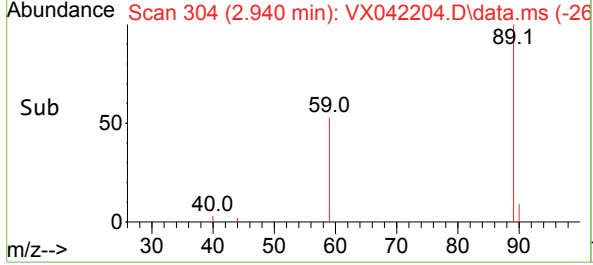
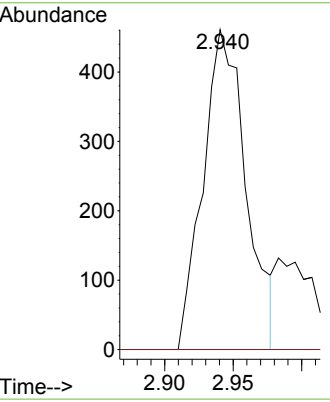
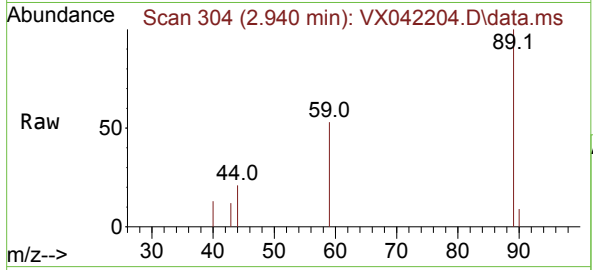




#11
 Tert butyl alcohol
 Concen: 3.191 ug/l
 RT: 2.940 min Scan# 30
 Delta R.T. -0.067 min
 Lab File: VX042204.D
 Acq: 05 Jul 2024 11:24

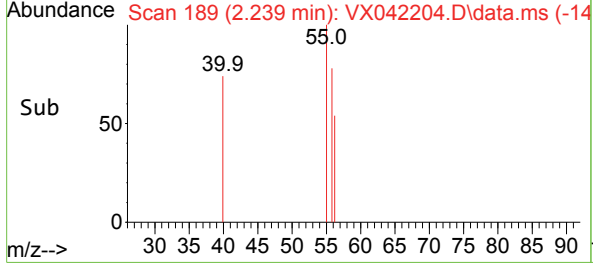
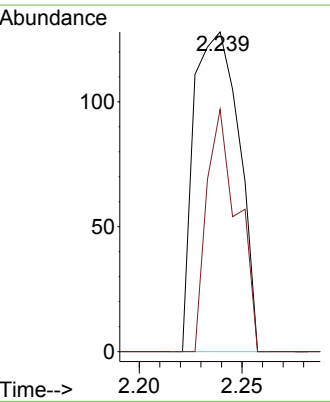
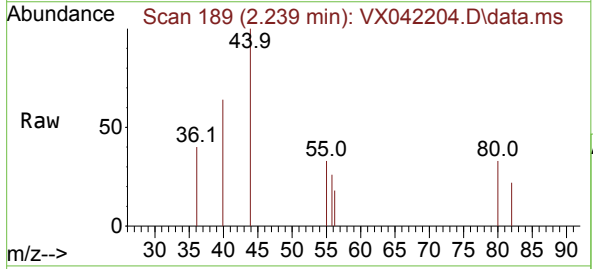
Instrument : MSVOA_X
 ClientSampleId :

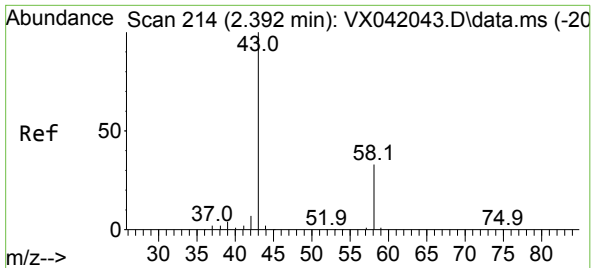
Tgt Ion: 59 Resp: 1007
 Ion Ratio Lower Upper
 59 100
 57 0.0 6.0 9.0#



#13
 Acrolein
 Concen: 0.551 ug/l
 RT: 2.239 min Scan# 189
 Delta R.T. 0.000 min
 Lab File: VX042204.D
 Acq: 05 Jul 2024 11:24

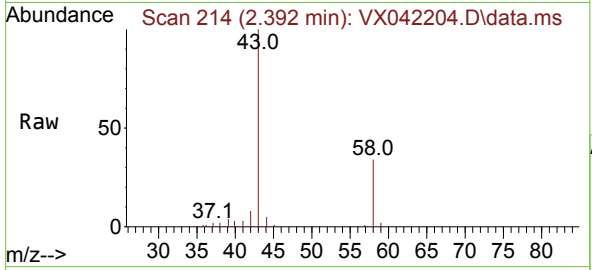
Tgt Ion: 56 Resp: 195
 Ion Ratio Lower Upper
 56 100
 55 51.8 57.1 85.7#



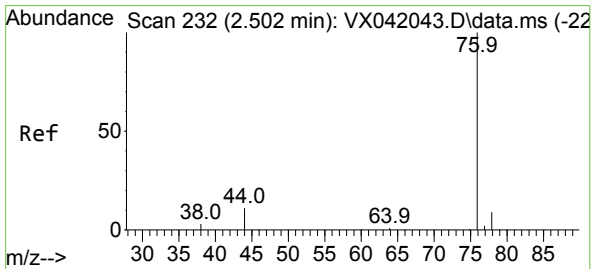
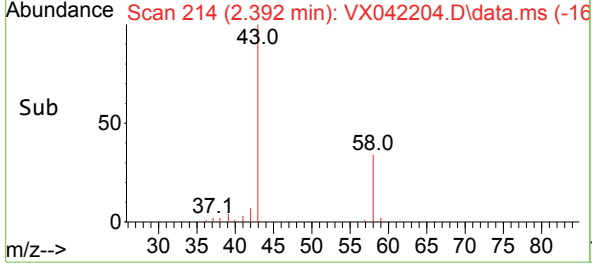
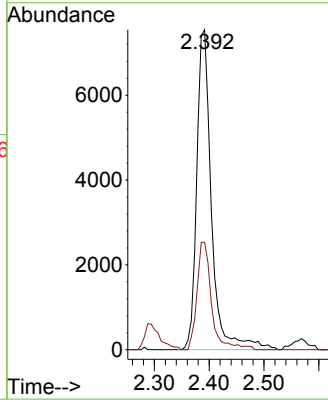


#16
 Acetone
 Concen: 19.373 ug/l
 RT: 2.392 min Scan# 211
 Delta R.T. -0.006 min
 Lab File: VX042204.D
 Acq: 05 Jul 2024 11:24

Instrument :
 MSVOA_X
 ClientSampleId :

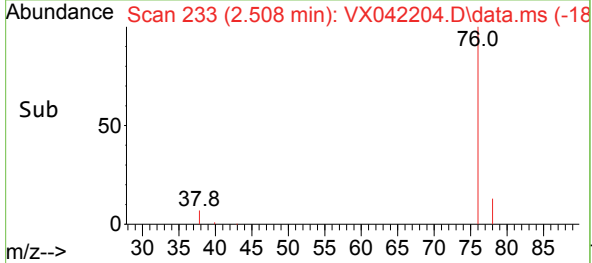
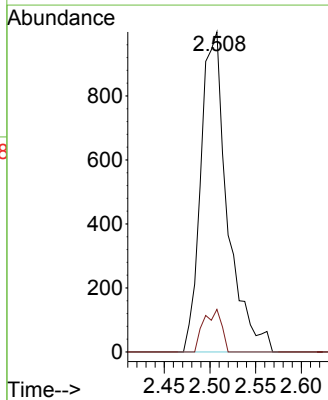
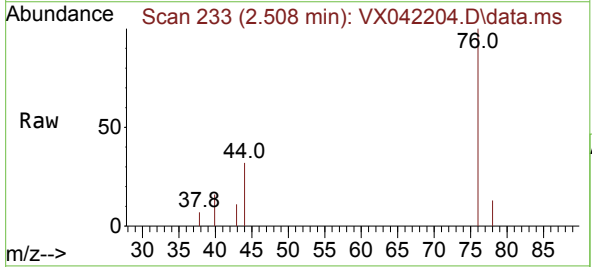


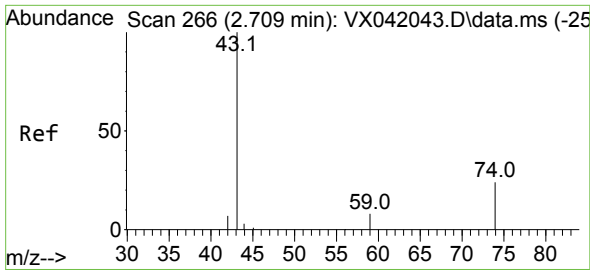
Tgt Ion: 43 Resp: 14144
 Ion Ratio Lower Upper
 43 100
 58 33.5 21.9 32.9#



#17
 Carbon Disulfide
 Concen: 0.798 ug/l
 RT: 2.508 min Scan# 233
 Delta R.T. 0.006 min
 Lab File: VX042204.D
 Acq: 05 Jul 2024 11:24

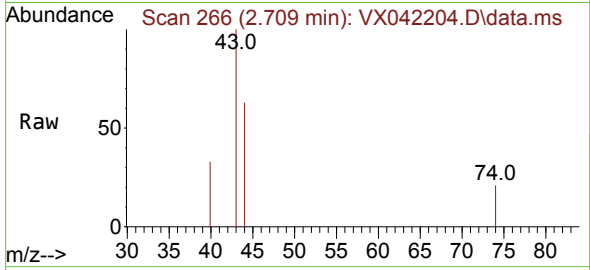
Tgt Ion: 76 Resp: 2024
 Ion Ratio Lower Upper
 76 100
 78 13.3 7.0 10.6#



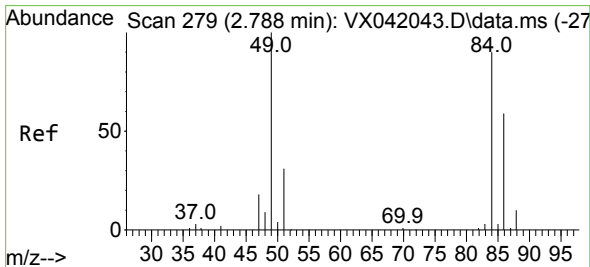
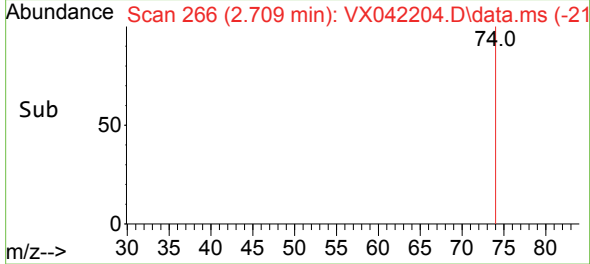
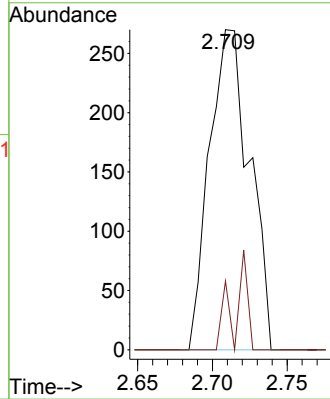


#18
Methyl Acetate
Concen: 0.254 ug/l
RT: 2.709 min Scan# 20
Delta R.T. 0.000 min
Lab File: VX042204.D
Acq: 05 Jul 2024 11:24

Instrument : MSVOA_X
ClientSampleId :

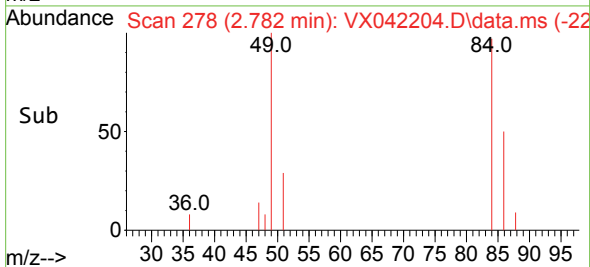
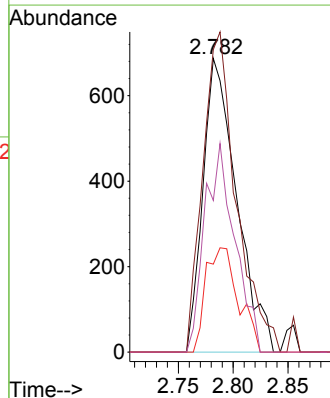
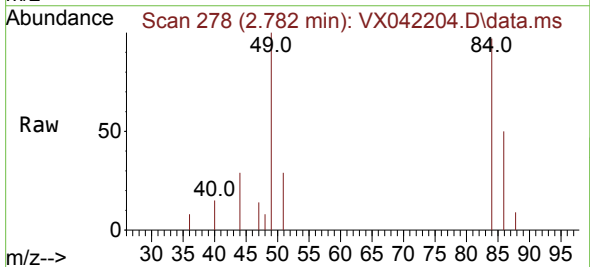


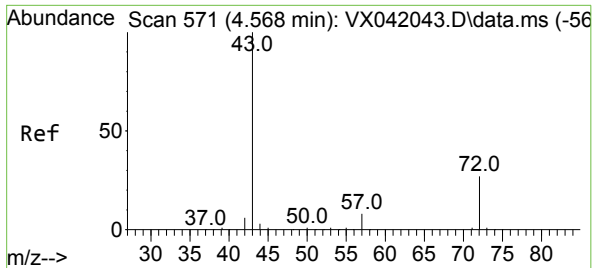
Tgt Ion: 43 Resp: 505
Ion Ratio Lower Upper
43 100
74 4.2 17.8 26.8#



#20
Methylene Chloride
Concen: 0.921 ug/l
RT: 2.782 min Scan# 278
Delta R.T. 0.000 min
Lab File: VX042204.D
Acq: 05 Jul 2024 11:24

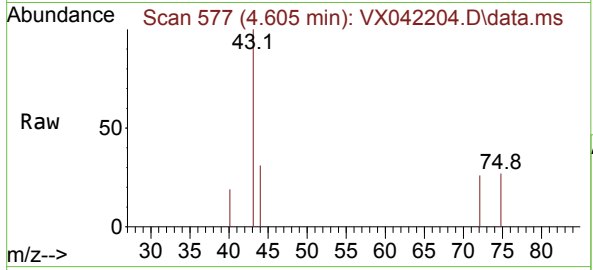
Tgt Ion: 84 Resp: 1473
Ion Ratio Lower Upper
84 100
49 103.1 103.6 155.4#
51 30.0 33.8 50.6#
86 51.7 49.4 74.0



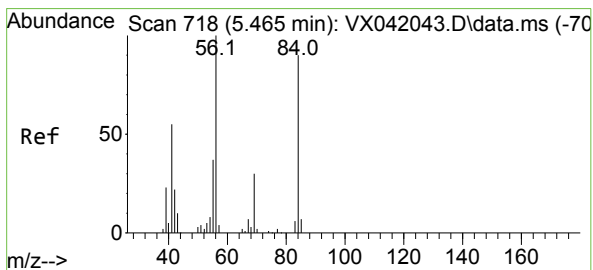
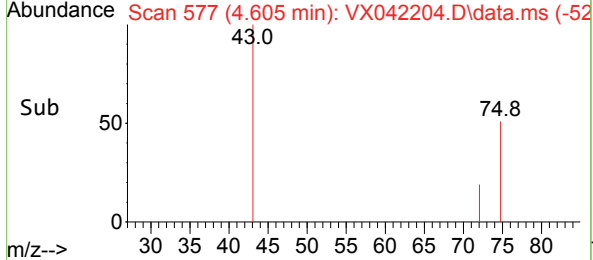
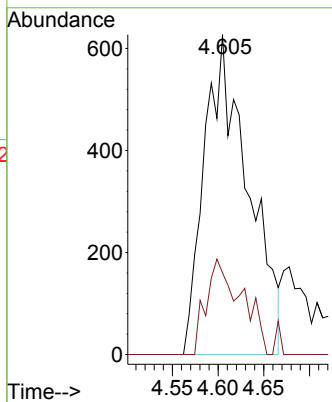


#25
 2-Butanone
 Concen: 1.836 ug/l
 RT: 4.605 min Scan# 51
 Delta R.T. 0.030 min
 Lab File: VX042204.D
 Acq: 05 Jul 2024 11:24

Instrument :
 MSVOA_X
 ClientSampleId :

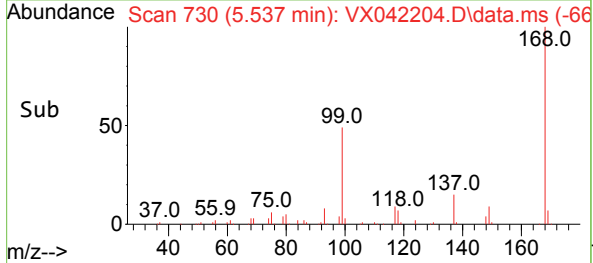
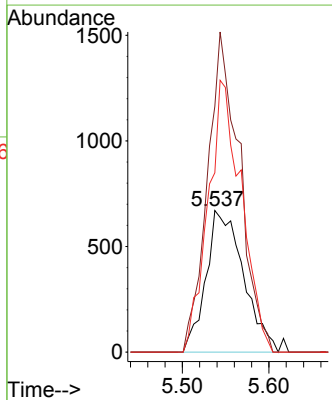
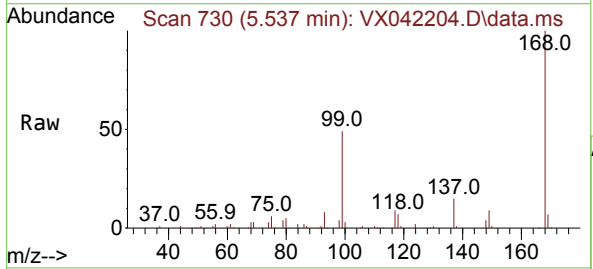


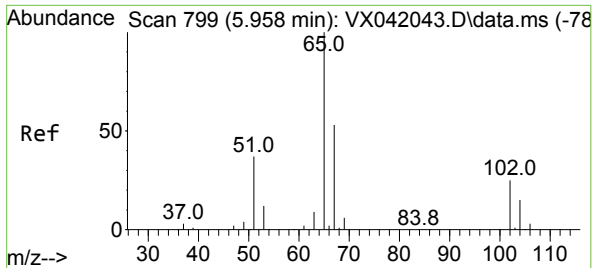
Tgt Ion: 43 Resp: 2085
 Ion Ratio Lower Upper
 43 100
 72 25.5 19.4 29.2



#31
 Cyclohexane
 Concen: 1.034 ug/l
 RT: 5.537 min Scan# 730
 Delta R.T. 0.073 min
 Lab File: VX042204.D
 Acq: 05 Jul 2024 11:24

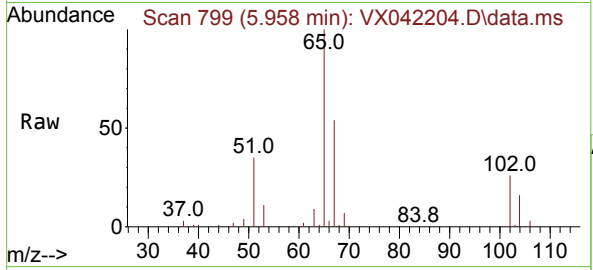
Tgt Ion: 56 Resp: 2011
 Ion Ratio Lower Upper
 56 100
 69 173.7 23.4 35.2#
 84 126.7 65.9 98.9#



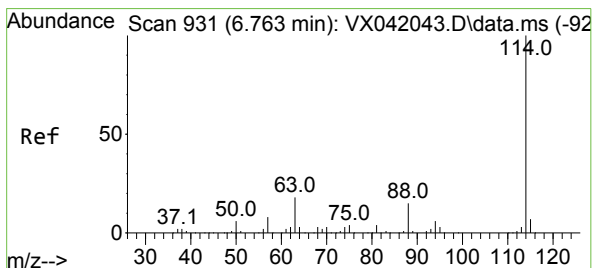
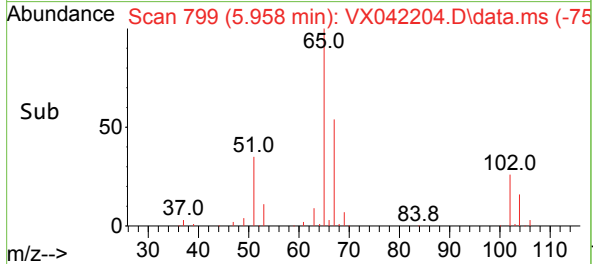
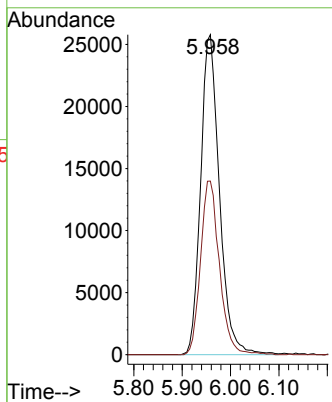


#33
 1,2-Dichloroethane-d4
 Concen: 41.824 ug/l
 RT: 5.958 min Scan# 799
 Delta R.T. 0.000 min
 Lab File: VX042204.D
 Acq: 05 Jul 2024 11:24

Instrument : MSVOA_X
 ClientSampleId :

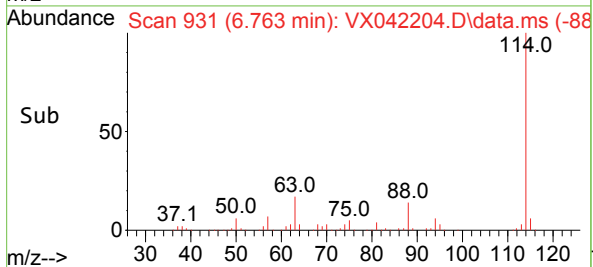
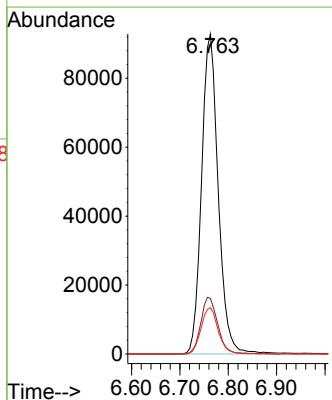
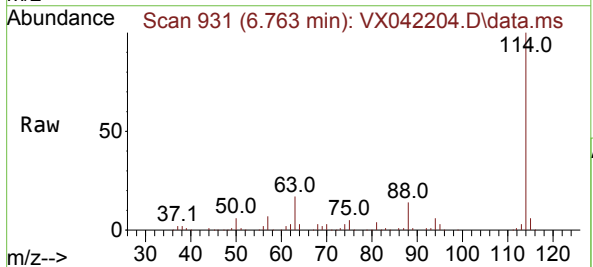


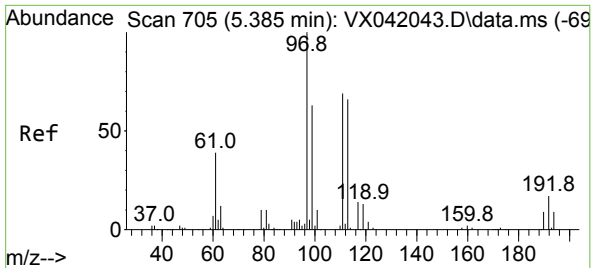
Tgt Ion: 65 Resp: 69542
 Ion Ratio Lower Upper
 65 100
 67 54.6 0.0 100.2



#34
 1,4-Difluorobenzene
 Concen: 50.000 ug/l
 RT: 6.763 min Scan# 931
 Delta R.T. 0.000 min
 Lab File: VX042204.D
 Acq: 05 Jul 2024 11:24

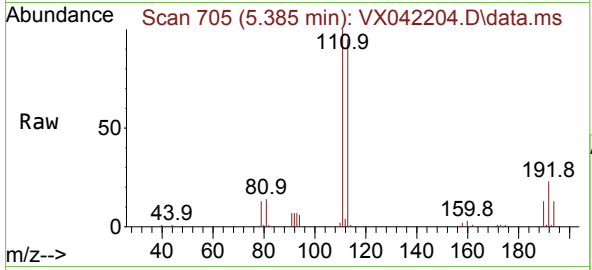
Tgt Ion: 114 Resp: 222022
 Ion Ratio Lower Upper
 114 100
 63 17.4 0.0 45.0
 88 14.4 0.0 36.6



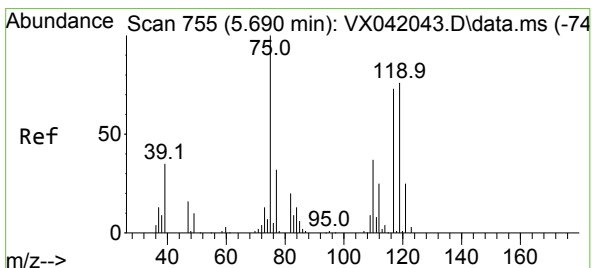
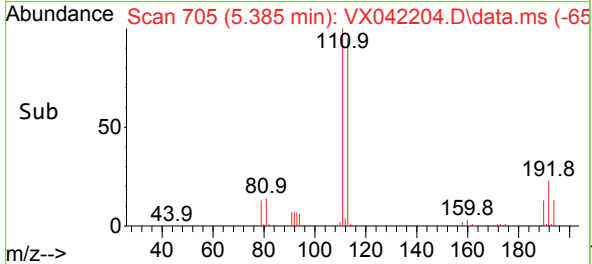
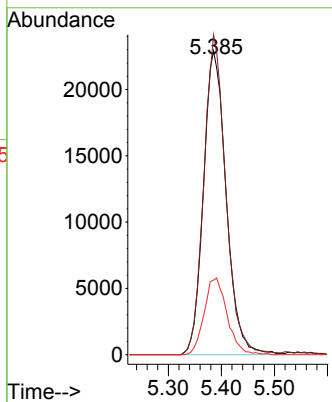


#35
 Dibromofluoromethane
 Concen: 43.319 ug/l
 RT: 5.385 min Scan# 705
 Delta R.T. -0.006 min
 Lab File: VX042204.D
 Acq: 05 Jul 2024 11:24

Instrument : MSVOA_X
 ClientSampleId :

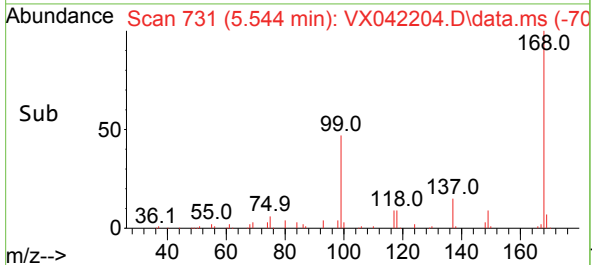
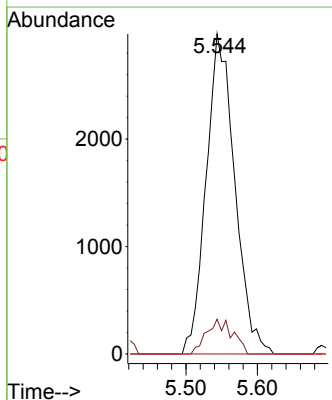
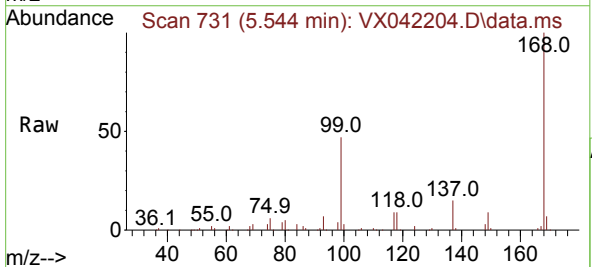


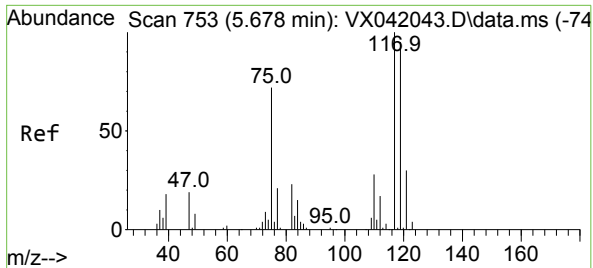
Tgt Ion: 113 Resp: 68243
 Ion Ratio Lower Upper
 113 100
 111 101.8 82.9 124.3
 192 25.4 13.3 19.9#



#36
 1,1-Dichloropropene
 Concen: 4.959 ug/l
 RT: 5.544 min Scan# 731
 Delta R.T. -0.146 min
 Lab File: VX042204.D
 Acq: 05 Jul 2024 11:24

Tgt Ion: 75 Resp: 8296
 Ion Ratio Lower Upper
 75 100
 110 9.8 17.0 50.9#
 77 0.0 24.7 37.1#



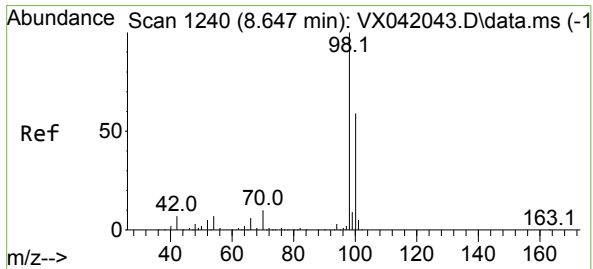
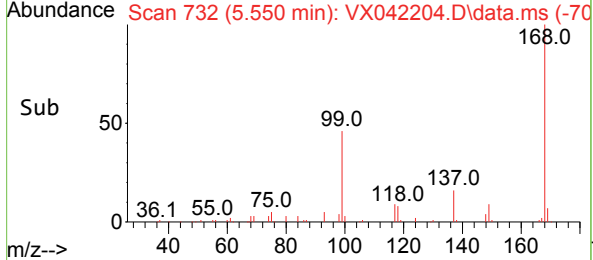
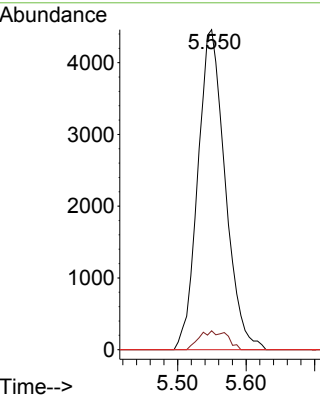
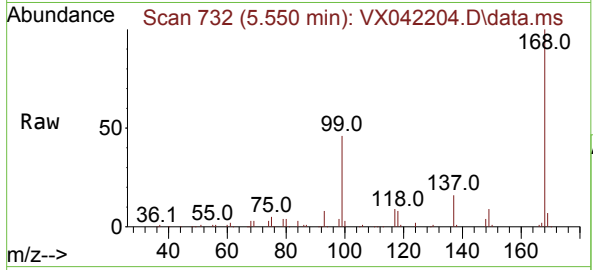


#38
 Carbon Tetrachloride
 Concen: 6.678 ug/l
 RT: 5.550 min Scan# 71
 Delta R.T. -0.128 min
 Lab File: VX042204.D
 Acq: 05 Jul 2024 11:24

Instrument :
 MSVOA_X
 ClientSampleId :

Tgt Ion:117 Resp: 12343

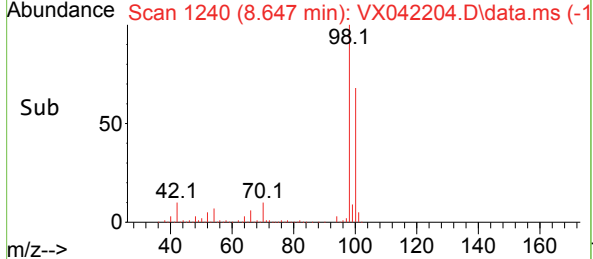
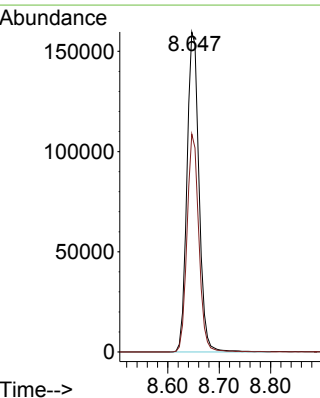
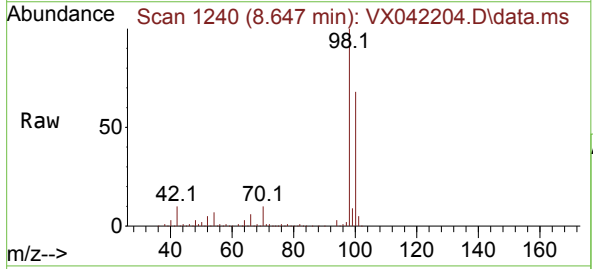
Ion	Ratio	Lower	Upper
117	100		
119	5.9	78.2	117.2#
121	0.0	24.4	36.6#

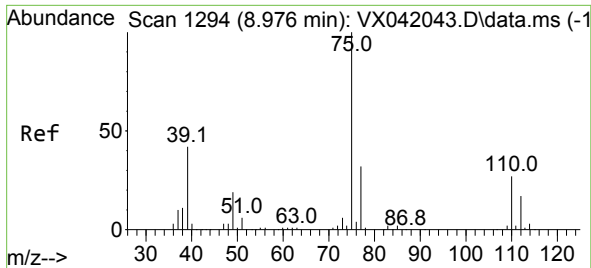


#50
 Toluene-d8
 Concen: 46.919 ug/l
 RT: 8.647 min Scan# 1240
 Delta R.T. 0.000 min
 Lab File: VX042204.D
 Acq: 05 Jul 2024 11:24

Tgt Ion: 98 Resp: 259665

Ion	Ratio	Lower	Upper
98	100		
100	66.8	53.1	79.7

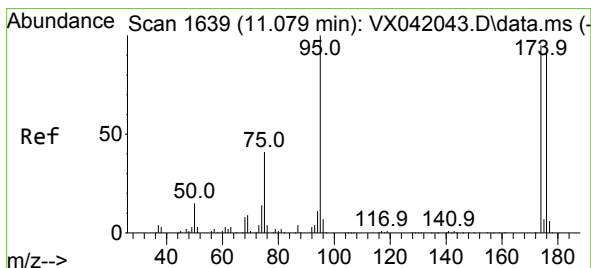
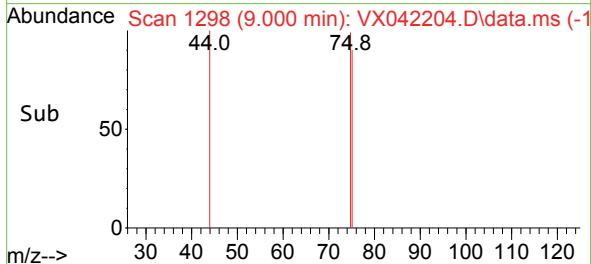
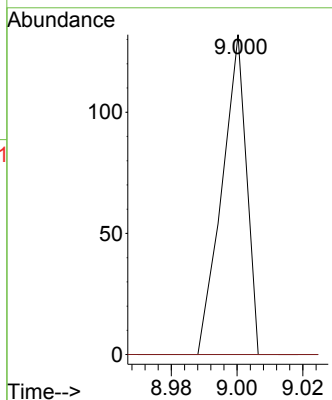
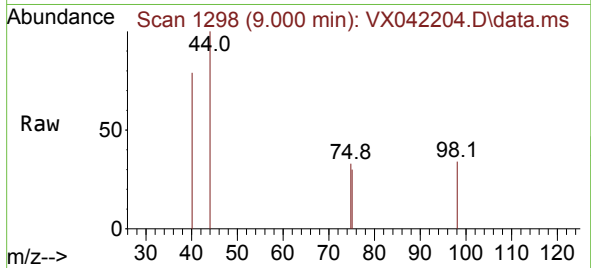




#53
 t-1,3-Dichloropropene
 Concen: 0.926 ug/l
 RT: 9.000 min Scan# 11
 Delta R.T. 0.018 min
 Lab File: VX042204.D
 Acq: 05 Jul 2024 11:24

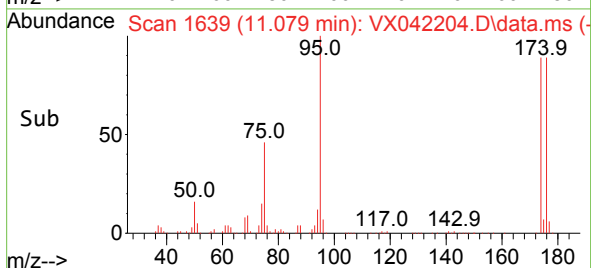
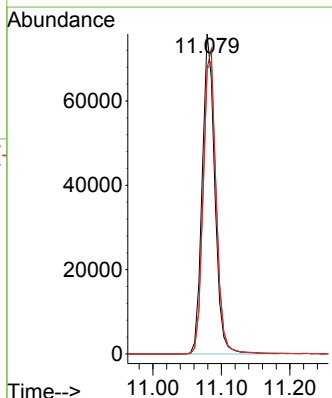
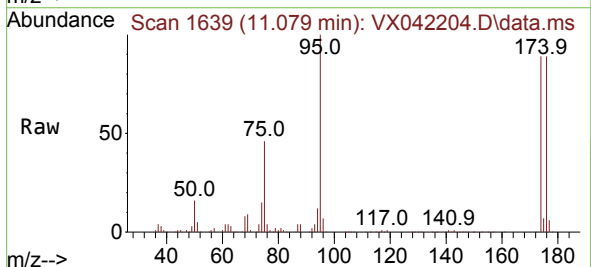
Instrument : MSVOA_X
 ClientSampleId :

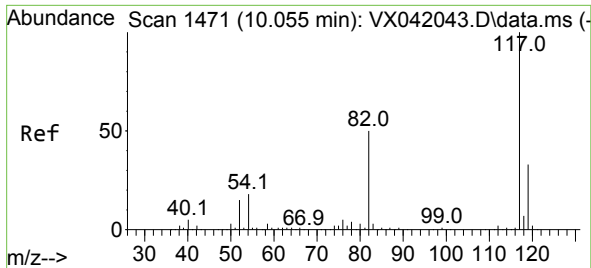
Tgt Ion: 75 Resp: 68
 Ion Ratio Lower Upper
 75 100
 77 0.0 25.7 38.5#



#62
 4-Bromofluorobenzene
 Concen: 47.593 ug/l
 RT: 11.079 min Scan# 1639
 Delta R.T. -0.000 min
 Lab File: VX042204.D
 Acq: 05 Jul 2024 11:24

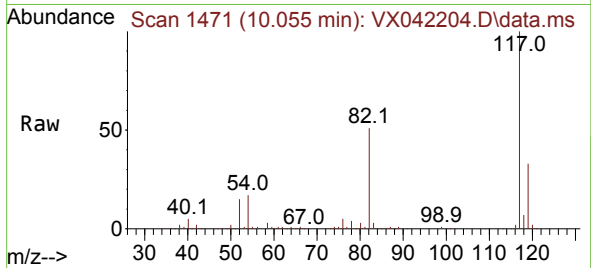
Tgt Ion: 95 Resp: 97095
 Ion Ratio Lower Upper
 95 100
 174 98.5 0.0 135.6
 176 95.8 0.0 131.0



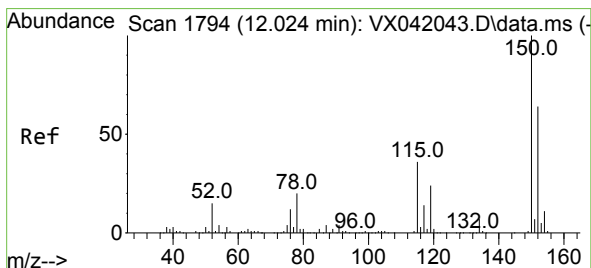
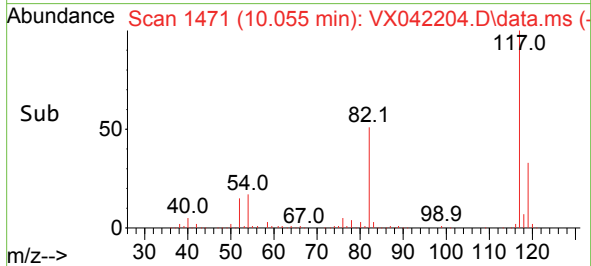
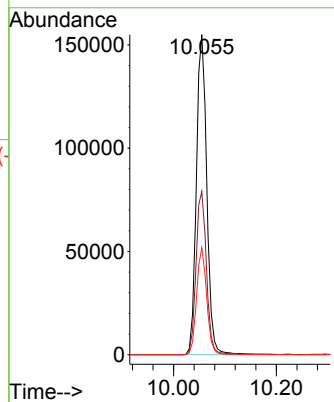


#63
 Chlorobenzene-d5
 Concen: 50.000 ug/l
 RT: 10.055 min Scan# 14
 Delta R.T. 0.000 min
 Lab File: VX042204.D
 Acq: 05 Jul 2024 11:24

Instrument :
 MSVOA_X
 ClientSampleId :

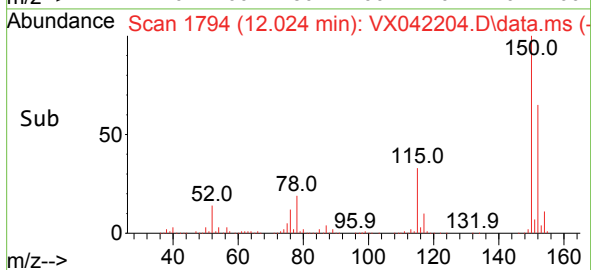
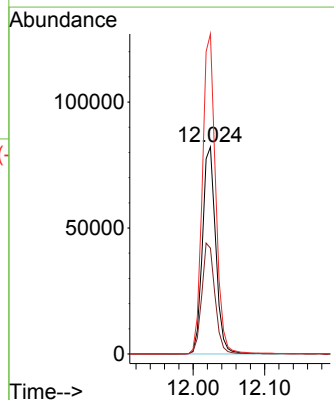
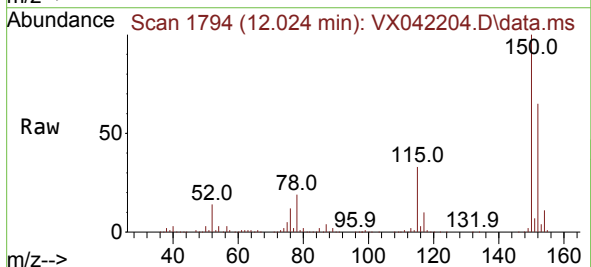


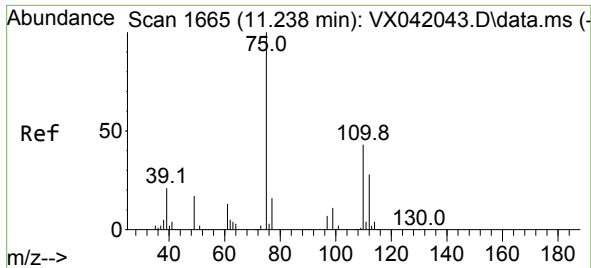
Tgt Ion:117 Resp: 218824
 Ion Ratio Lower Upper
 117 100
 82 51.0 46.2 69.4
 119 33.5 25.5 38.3



#72
 1,4-Dichlorobenzene-d4
 Concen: 50.000 ug/l
 RT: 12.024 min Scan# 1794
 Delta R.T. 0.000 min
 Lab File: VX042204.D
 Acq: 05 Jul 2024 11:24

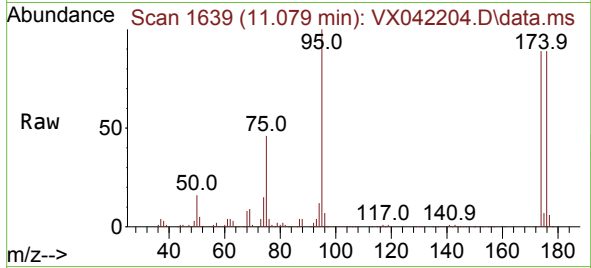
Tgt Ion:152 Resp: 106061
 Ion Ratio Lower Upper
 152 100
 115 53.2 43.3 129.9
 150 154.7 0.0 345.0



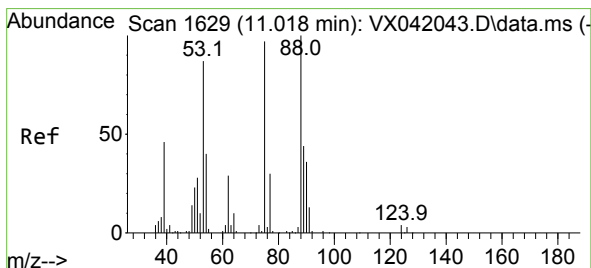
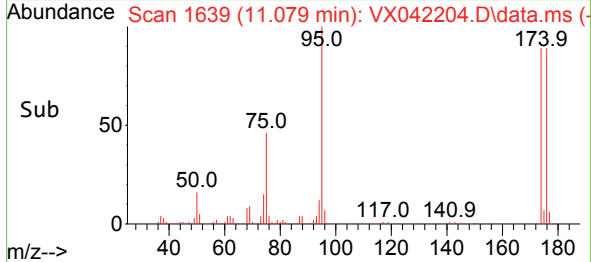
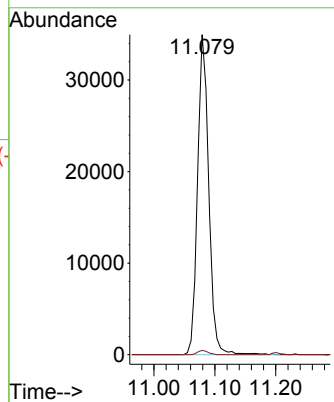


#76
 1,2,3-Trichloropropane
 Concen: 23.072 ug/l
 RT: 11.079 min Scan# 1639
 Delta R.T. -0.159 min
 Lab File: VX042204.D
 Acq: 05 Jul 2024 11:24

Instrument : MSVOA_X
 ClientSampleId :

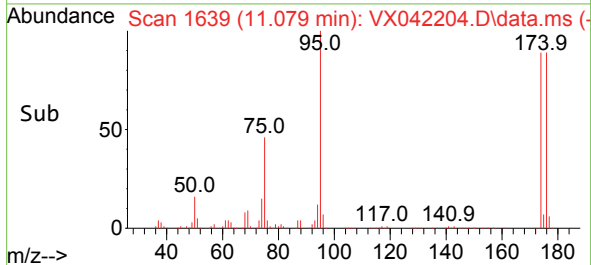
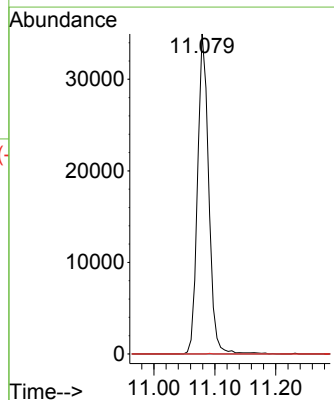
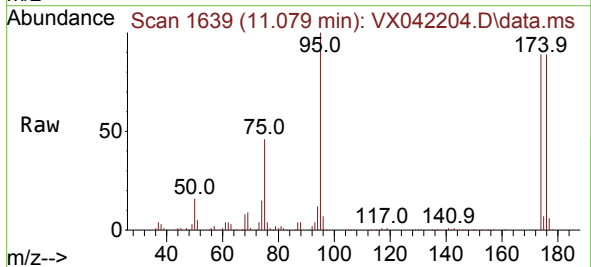


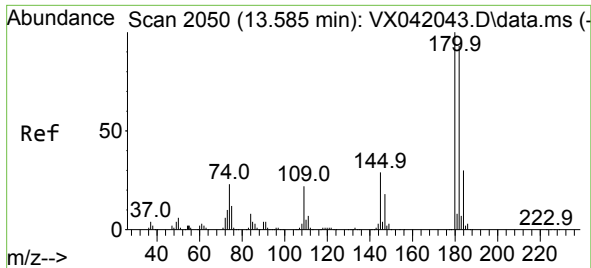
Tgt Ion: 75 Resp: 44424
 Ion Ratio Lower Upper
 75 100
 77 1.3 19.1 57.5#



#81
 trans-1,4-Dichloro-2-butene
 Concen: 65.523 ug/l
 RT: 11.079 min Scan# 1639
 Delta R.T. 0.061 min
 Lab File: VX042204.D
 Acq: 05 Jul 2024 11:24

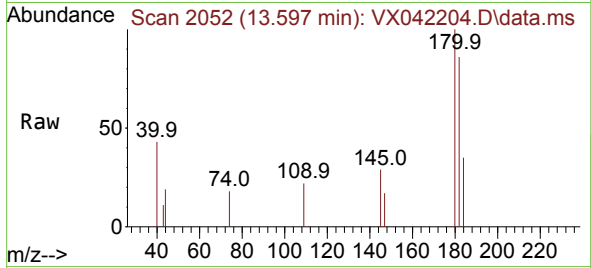
Tgt Ion: 75 Resp: 44424
 Ion Ratio Lower Upper
 75 100
 53 0.0 90.5 135.7#
 89 0.1 36.9 55.3#





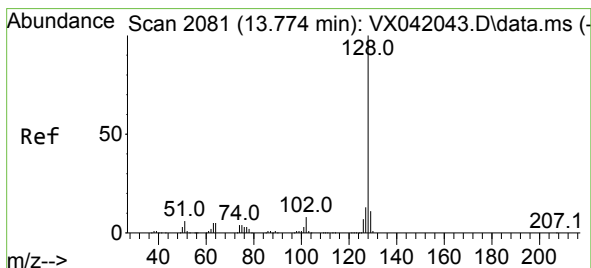
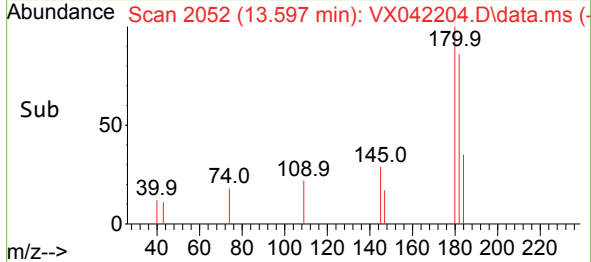
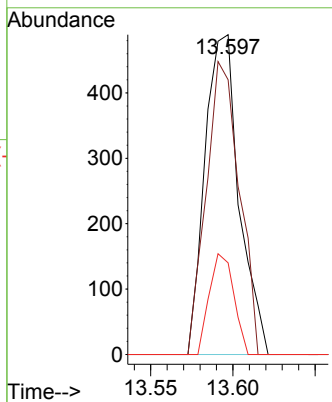
#93
 1,2,4-Trichlorobenzene
 Concen: 0.312 ug/l
 RT: 13.597 min Scan# 2052
 Delta R.T. 0.012 min
 Lab File: VX042204.D
 Acq: 05 Jul 2024 11:24

Instrument :
 MSVOA_X
 ClientSampleId :

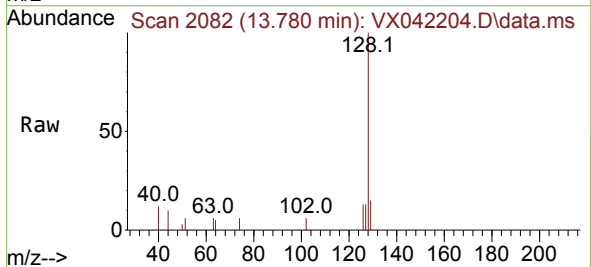


Tgt Ion:180 Resp: 705

Ion	Ratio	Lower	Upper
180	100		
182	88.8	48.3	144.8
145	22.6	18.0	54.0

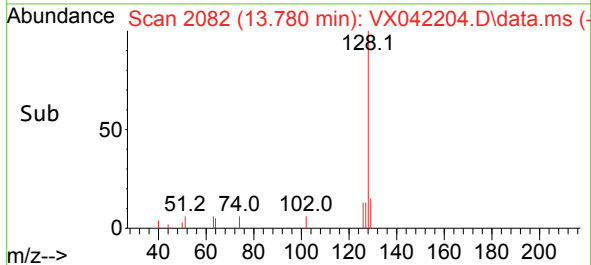
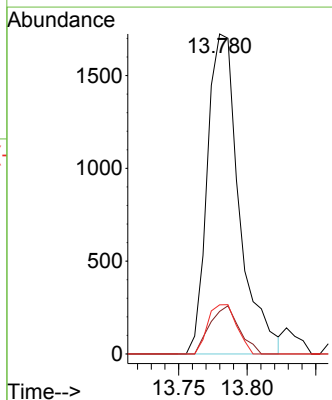


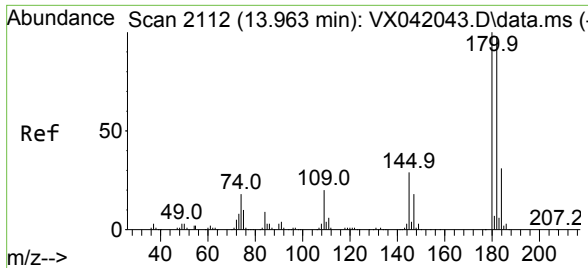
#95
 Naphthalene
 Concen: 1.109 ug/l
 RT: 13.780 min Scan# 2082
 Delta R.T. 0.006 min
 Lab File: VX042204.D
 Acq: 05 Jul 2024 11:24



Tgt Ion:128 Resp: 2787

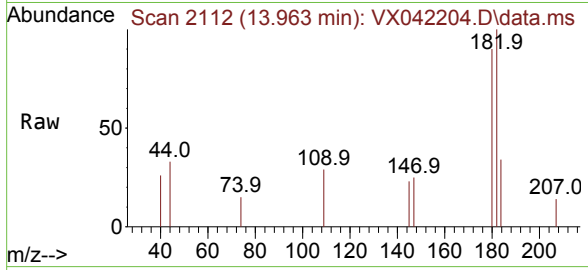
Ion	Ratio	Lower	Upper
128	100		
127	13.7	10.3	15.5
129	13.9	8.8	13.2





#96
 1,2,3-Trichlorobenzene
 Concen: 0.288 ug/l
 RT: 13.963 min Scan# 2112
 Delta R.T. 0.000 min
 Lab File: VX042204.D
 Acq: 05 Jul 2024 11:24

Instrument :
 MSVOA_X
 ClientSampleId :



Tgt Ion:180 Resp: 688

Ion	Ratio	Lower	Upper
180	100		
182	96.8	46.9	140.6
145	23.5	17.8	53.5

