

Data Path : Z:\VOASRV\HPCHEM1\MSVOA X\DATA\VX070620\  
 Data File : VX017174.D  
 Acq On : 06 Jul 2020 17:33  
 Operator : JC/SP  
 Sample : L3159-07  
 Misc : 5.0mL/MSVOA X/WATER  
 ALS Vial : 14 Sample Multiplier: 1

Instrument :  
 MSVOA\_X  
 ClientSampleId :  
 42BR-20200629

Quant Time: Jul 07 06:52:03 2020  
 Quant Method : Z:\VOASRV\HPCHEM1\MSVOA\_X\METHOD\82X062920W.M  
 Quant Title : SW846 8260  
 QLast Update : Mon Jun 29 17:10:38 2020  
 Response via : Initial Calibration

Internal Standards	R.T.	QIon	Response	Conc	Units	Dev(Min)
1) Pentafluorobenzene	5.64	168	273609	50.00	ug/l	0.00
34) 1,4-Difluorobenzene	6.83	114	451349	50.00	ug/l	0.00
63) Chlorobenzene-d5	10.10	117	463233	50.00	ug/l	0.00
72) 1,4-Dichlorobenzene-d4	12.06	152	255117	50.00	ug/l	0.00

## System Monitoring Compounds

33) 1,2-Dichloroethane-d4	6.03	65	168683	50.01	ug/l	0.00
Spiked Amount	50.000		Recovery	=	100.02%	
35) Dibromofluoromethane	5.47	113	145600	51.00	ug/l	0.00
Spiked Amount	50.000		Recovery	=	102.00%	
50) Toluene-d8	8.70	98	542770	51.41	ug/l	0.00
Spiked Amount	50.000		Recovery	=	102.82%	
62) 4-Bromofluorobenzene	11.12	95	234608	56.85	ug/l	0.00
Spiked Amount	50.000		Recovery	=	113.70%	

## Target Compounds

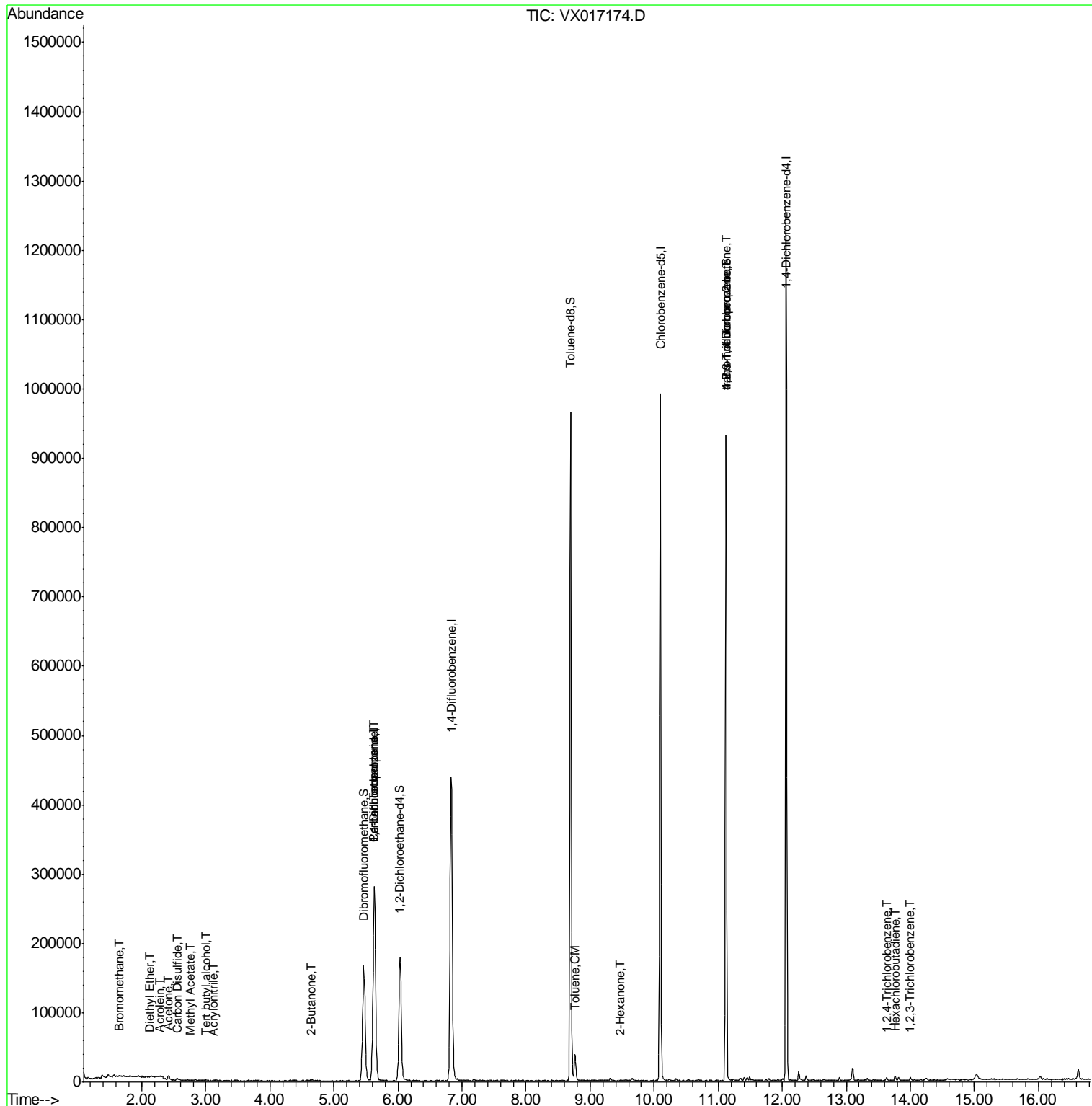
						Qvalue
5) Bromomethane	1.65	94	669	0.426	ug/l #	60
8) Diethyl Ether	2.12	74	148	0.465	ug/l	96
11) Tert butyl alcohol	3.00	59	1471	2.286	ug/l	99
13) Acrolein	2.27	56	453	1.178	ug/l #	82
15) Acrylonitrile	3.12	53	700	0.453	ug/l #	81
16) Acetone	2.42	43	7096	5.624	ug/l	97
17) Carbon Disulfide	2.55	76	2869	0.402	ug/l #	89
18) Methyl Acetate	2.76	43	796	0.242	ug/l #	83
20) Methylene Chloride	2.84	84	556	Below Cal	#	61
25) 2-Butanone	4.64	43	2604	1.239	ug/l #	79
36) 1,1-Dichloropropene	5.62	75	19754	4.631	ug/l #	50
38) Carbon Tetrachloride	5.64	117	26848	5.714	ug/l #	18
44) Trichloroethene	7.18	130	651	Below Cal		62
52) Toluene	8.76	92	14274	1.824	ug/l	94
59) 2-Hexanone	9.48	43	934	0.298	ug/l	86
76) 1,2,3-Trichloropropane	11.12	75	115650	23.053	ug/l #	37
81) trans-1,4-Dichloro-2-buten	11.12	75	115650	59.699	ug/l #	13
88) 1,4-Dichlorobenzene	12.01	146	886	Below Cal		81
93) 1,2,4-Trichlorobenzene	13.63	180	1465	0.275	ug/l	84
94) Hexachlorobutadiene	13.77	225	874	1.270	ug/l	90
96) 1,2,3-Trichlorobenzene	14.00	180	1044	0.203	ug/l	87

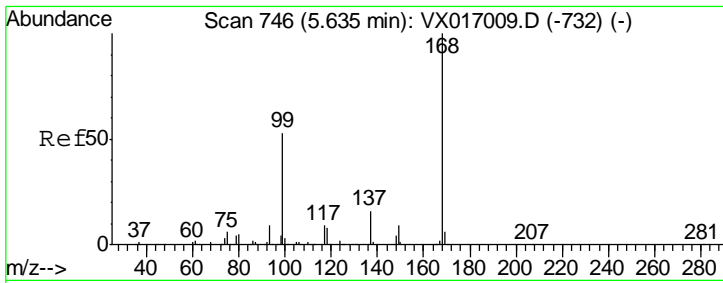
(#) = qualifier out of range (m) = manual integration (+) = signals summed

Data Path : Z:\VOASRV\HPCHEM1\MSVOA X\DATA\VX070620\  
 Data File : VX017174.D  
 Acq On : 06 Jul 2020 17:33  
 Operator : JC/SP  
 Sample : L3159-07  
 Misc : 5.0mL/MSVOA X/WATER  
 ALS Vial : 14 Sample Multiplier: 1

Instrument :  
 MSVOA\_X  
 ClientSampled :  
 42BR-20200629

Quant Time: Jul 07 06:52:03 2020  
 Quant Method : Z:\VOASRV\HPCHEM1\MSVOA\_X\METHOD\82X062920W.M  
 Quant Title : SW846 8260  
 QLast Update : Mon Jun 29 17:10:38 2020  
 Response via : Initial Calibration

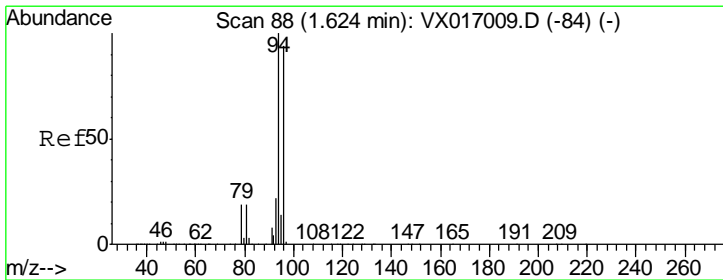
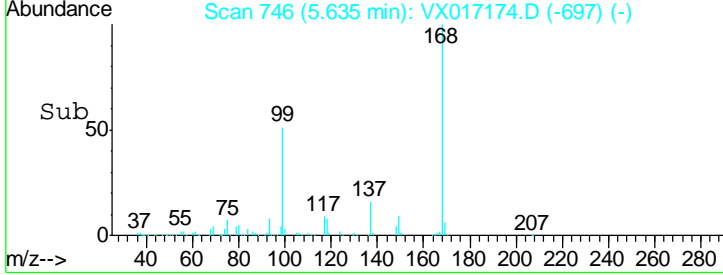
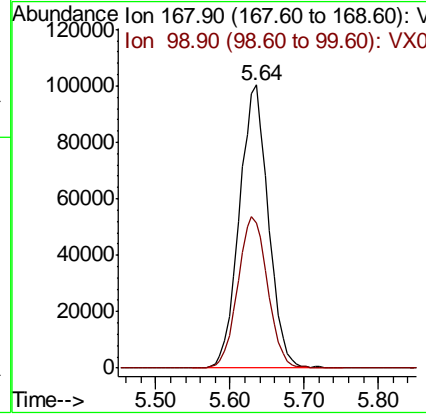
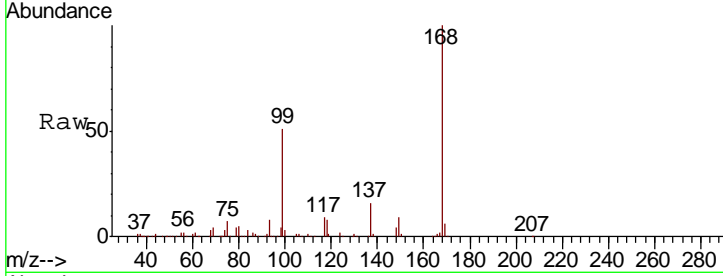




#1  
 Pentafluorobenzene  
 Concen: 50.000 ug/l  
 RT: 5.64 min Scan# 746  
 Delta R.T. -0.00 min  
 Lab File: VX017174.D  
 Acq: 06 Jul 2020 17:33

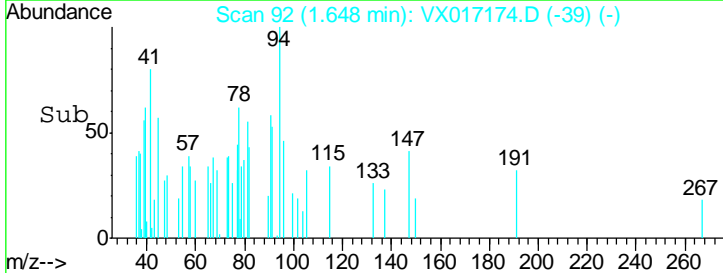
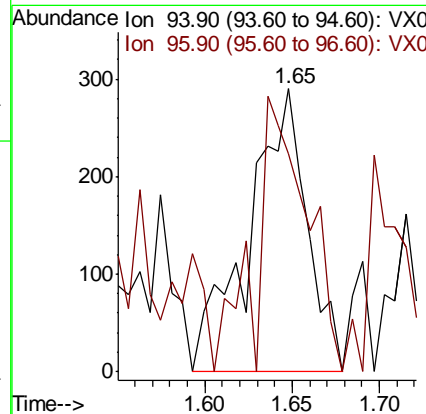
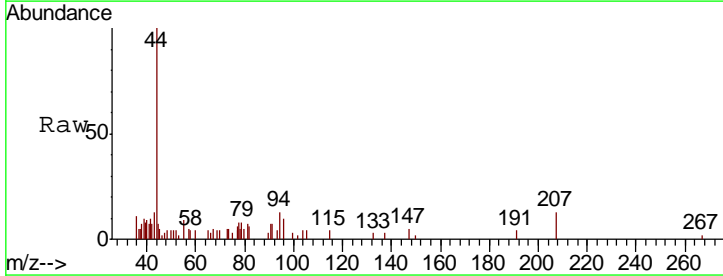
**Instrument :**  
 MSVOA\_X  
**ClientSampleId :**  
 42BR-20200629

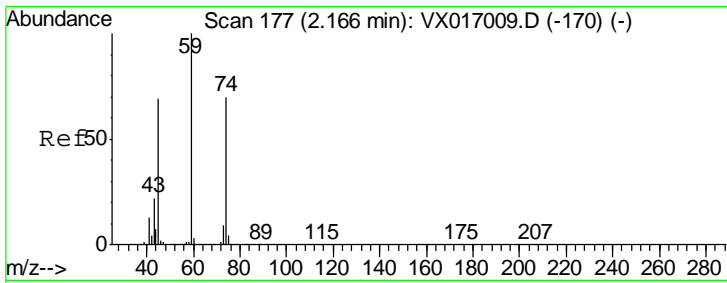
Tgt Ion	Resp	Lower	Upper
168	100		
99	51.4	42.6	64.0



#5  
 Bromomethane  
 Concen: 0.426 ug/l  
 RT: 1.65 min Scan# 92  
 Delta R.T. 0.03 min  
 Lab File: VX017174.D  
 Acq: 06 Jul 2020 17:33

Tgt Ion	Resp	Lower	Upper
94	100		
96	55.5	75.0	112.4#

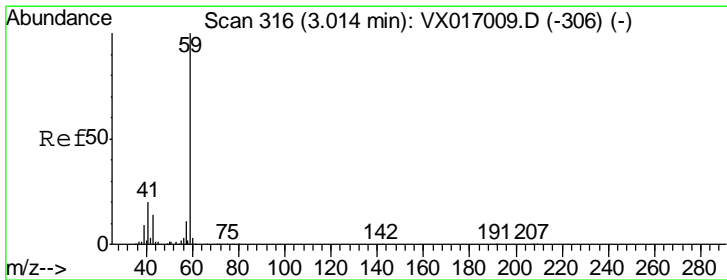
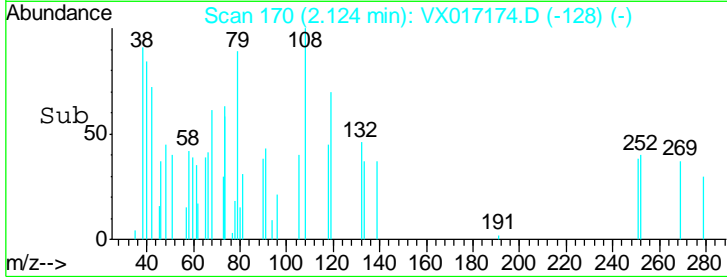
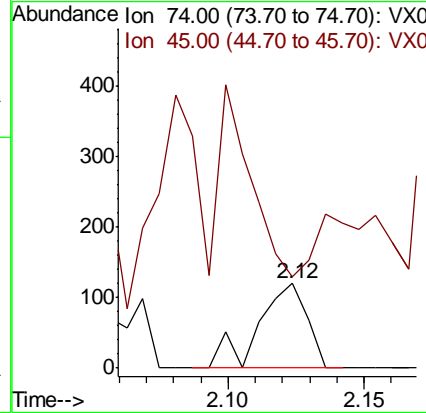
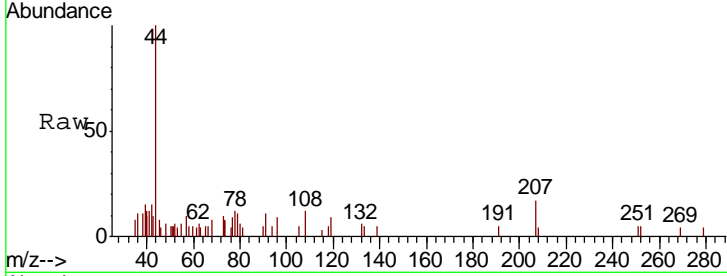




#8  
 Diethyl Ether  
 Concen: 0.465 ug/l  
 RT: 2.12 min Scan# 170  
 Delta R.T. -0.04 min  
 Lab File: VX017174.D  
 Acq: 06 Jul 2020 17:33

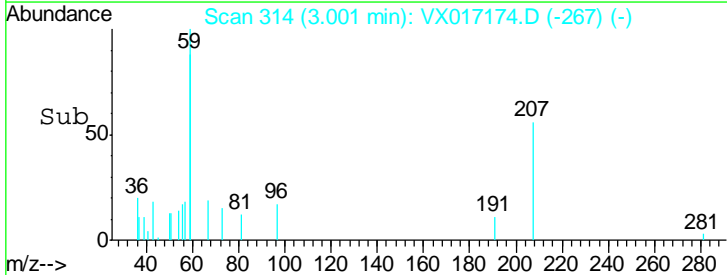
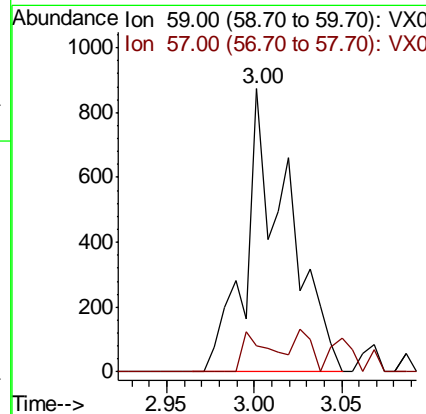
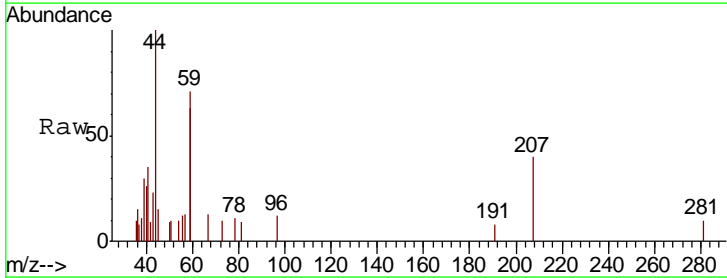
Instrument :  
 MSVOA\_X  
 ClientSampled :  
 42BR-20200629

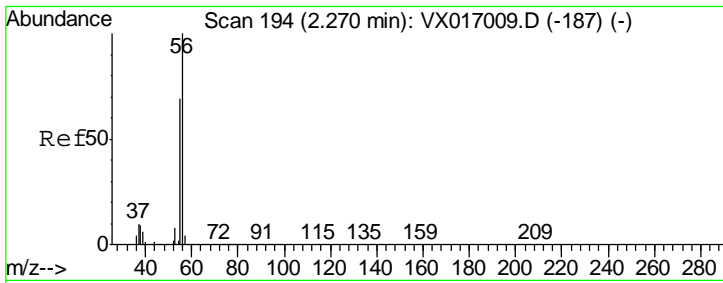
Tgt Ion: 74 Resp: 148  
 Ion Ratio Lower Upper  
 74 100  
 45 95.9 49.8 149.3



#11  
 Tert butyl alcohol  
 Concen: 2.286 ug/l  
 RT: 3.00 min Scan# 314  
 Delta R.T. -0.01 min  
 Lab File: VX017174.D  
 Acq: 06 Jul 2020 17:33

Tgt Ion: 59 Resp: 1471  
 Ion Ratio Lower Upper  
 59 100  
 57 9.7 8.2 12.2

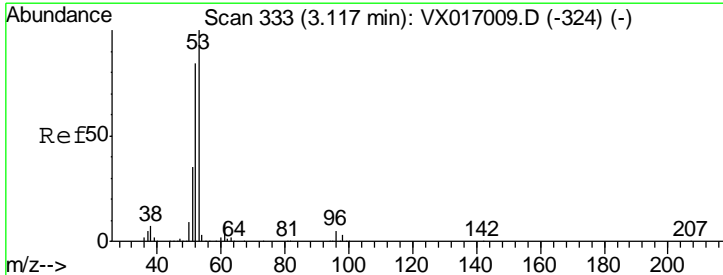
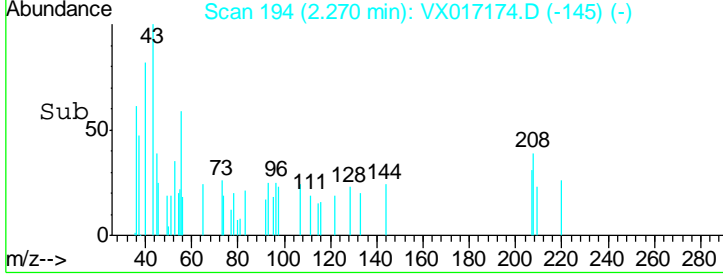
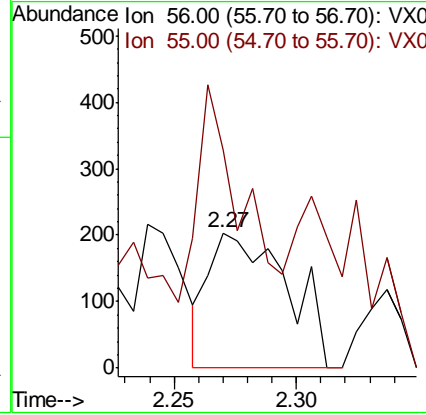
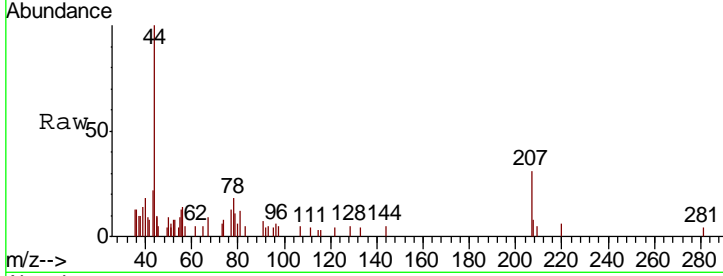




#13  
 Acrolein  
 Concen: 1.178 ug/l  
 RT: 2.27 min Scan# 194  
 Delta R.T. -0.00 min  
 Lab File: VX017174.D  
 Acq: 06 Jul 2020 17:33

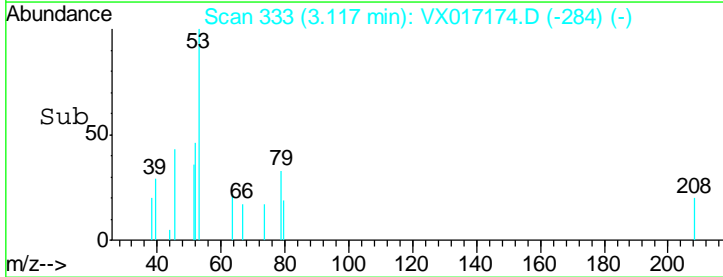
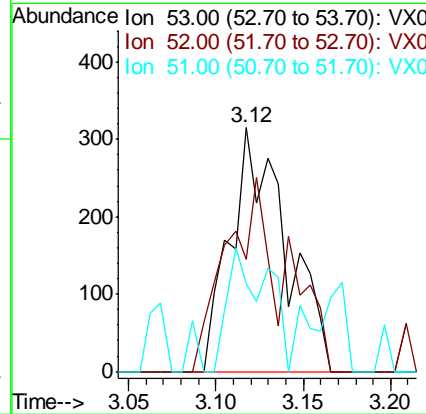
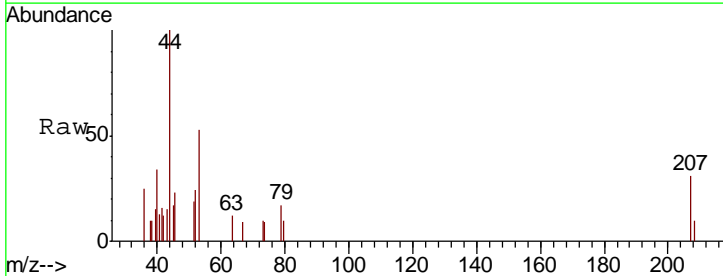
Instrument : MSVOA\_X  
 ClientSampled : 42BR-20200629

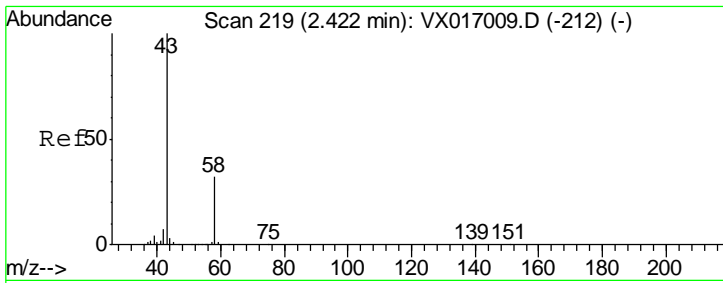
Tgt Ion	Resp	Lower	Upper
56	453		
55	84.1	55.7	83.5#



#15  
 Acrylonitrile  
 Concen: 0.453 ug/l  
 RT: 3.12 min Scan# 333  
 Delta R.T. -0.00 min  
 Lab File: VX017174.D  
 Acq: 06 Jul 2020 17:33

Tgt Ion	Resp	Lower	Upper
53	700		
52	58.7	65.6	98.4#
51	36.4	28.3	42.5

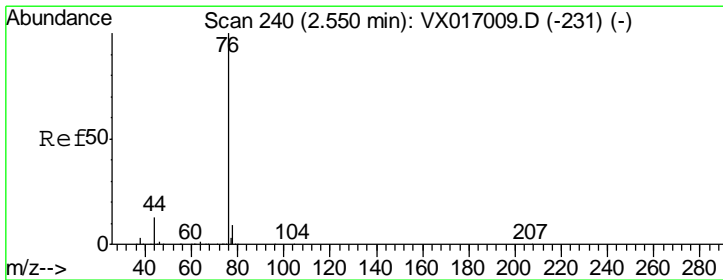
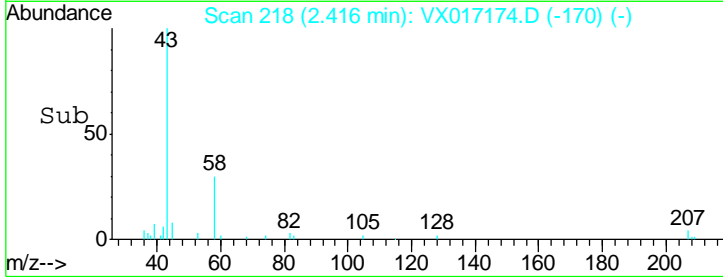
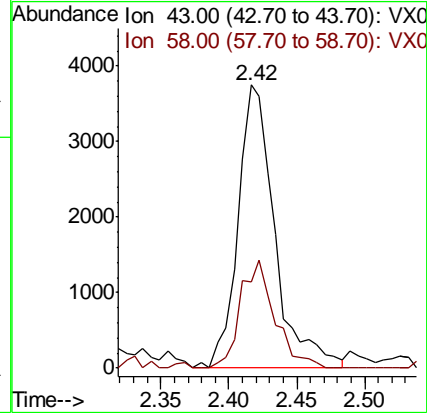
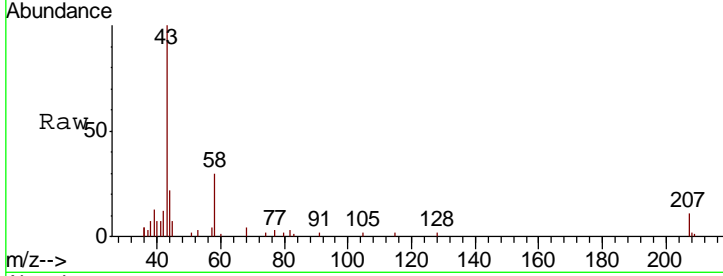




#16  
 Acetone  
 Concen: 5.624 ug/l  
 RT: 2.42 min Scan# 218  
 Delta R.T. -0.01 min  
 Lab File: VX017174.D  
 Acq: 06 Jul 2020 17:33

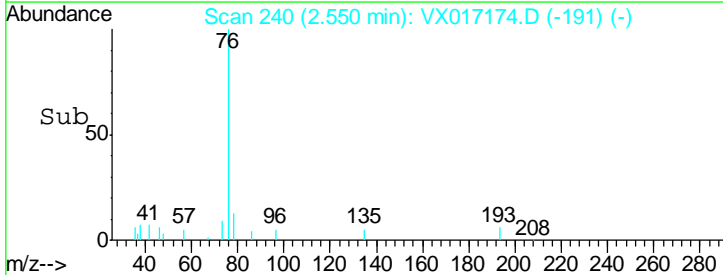
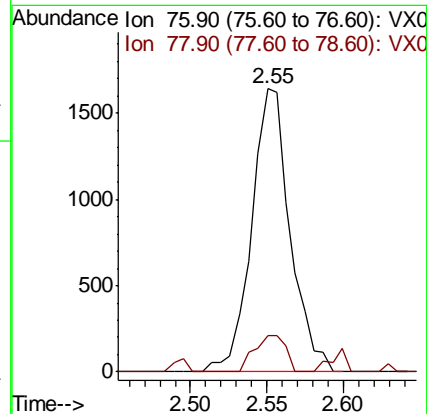
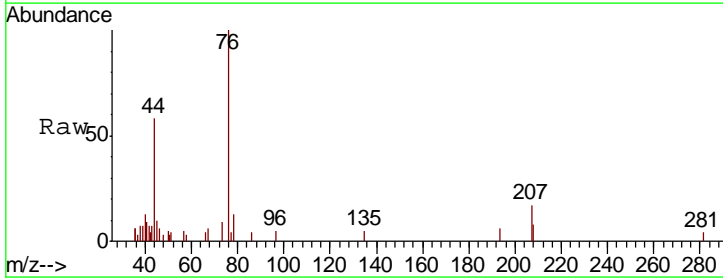
Instrument :  
 MSVOA\_X  
 ClientSampled :  
 42BR-20200629

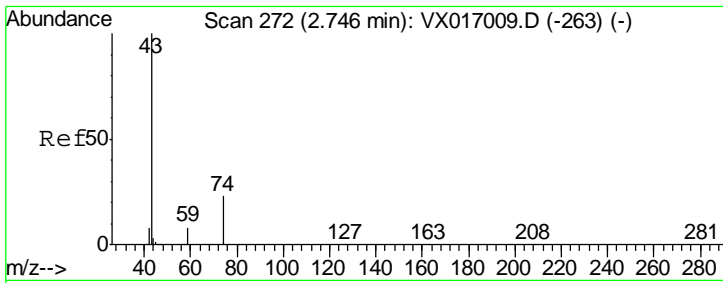
Tgt Ion	Resp	Lower	Upper
43	7096		
58	30.5	25.7	38.5



#17  
 Carbon Disulfide  
 Concen: 0.402 ug/l  
 RT: 2.55 min Scan# 240  
 Delta R.T. 0.00 min  
 Lab File: VX017174.D  
 Acq: 06 Jul 2020 17:33

Tgt Ion	Resp	Lower	Upper
76	2869		
78	12.8	7.2	10.8#

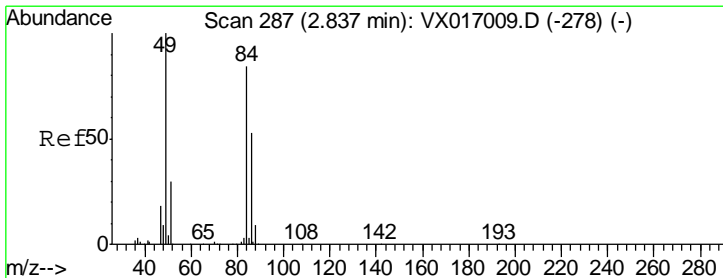
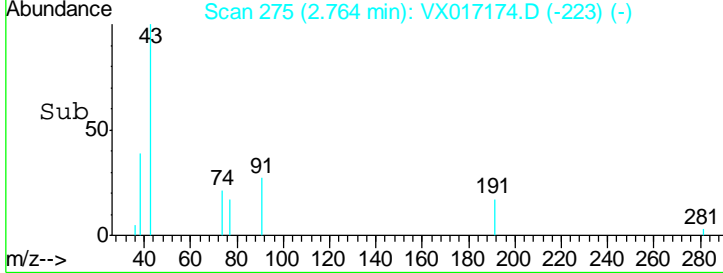
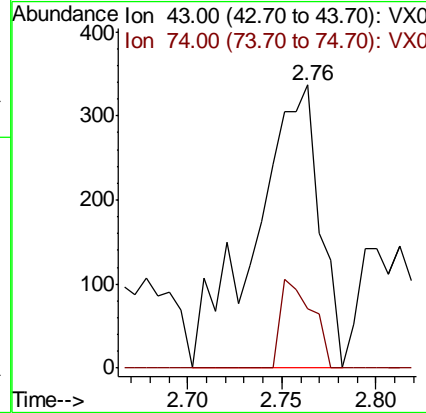
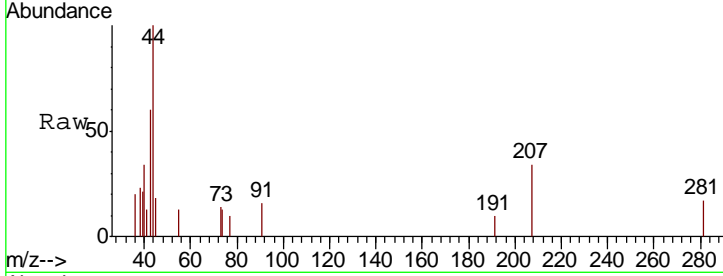




#18  
 Methyl Acetate  
 Concen: 0.242 ug/l  
 RT: 2.76 min Scan# 275  
 Delta R.T. 0.02 min  
 Lab File: VX017174.D  
 Acq: 06 Jul 2020 17:33

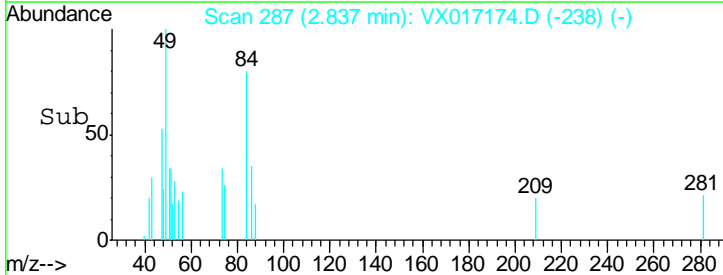
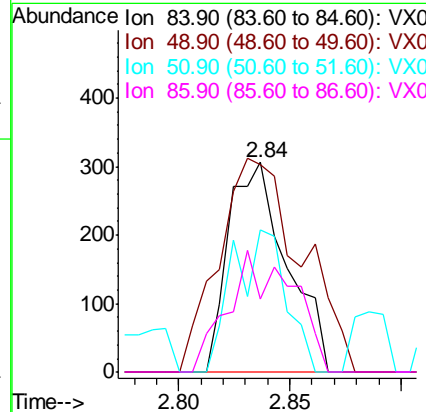
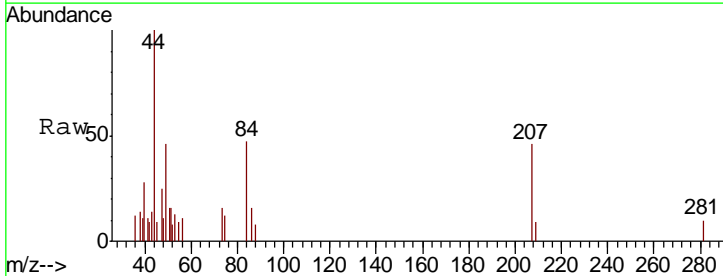
Instrument : MSVOA\_X  
 ClientSampleId : 42BR-20200629

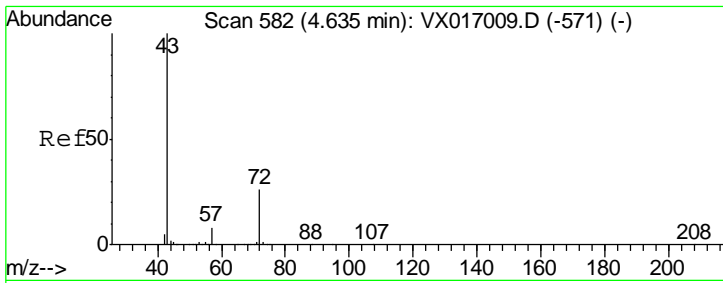
Tgt Ion	Resp	Lower	Upper
43	100		
74	15.5	19.3	28.9#



#20  
 Methylene Chloride  
 Concen: Below Cal  
 RT: 2.84 min Scan# 287  
 Delta R.T. 0.00 min  
 Lab File: VX017174.D  
 Acq: 06 Jul 2020 17:33

Tgt Ion	Resp	Lower	Upper
84	100		
49	79.4	94.7	142.1#
51	68.0	28.6	42.8#
86	34.6	50.5	75.7#

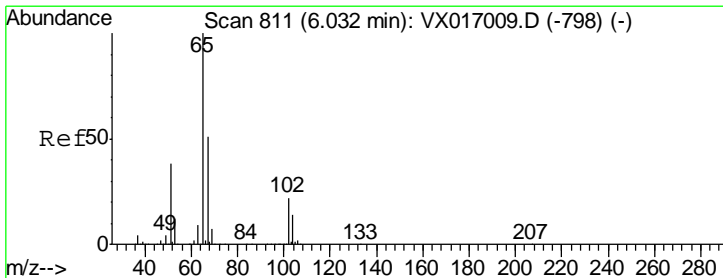
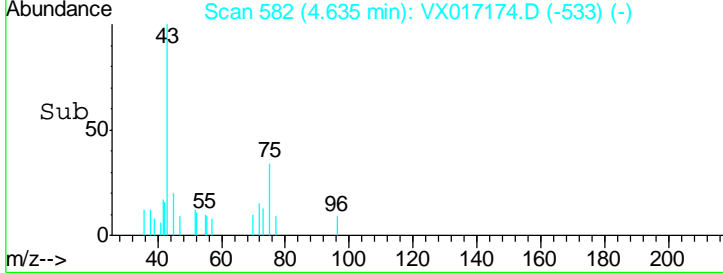
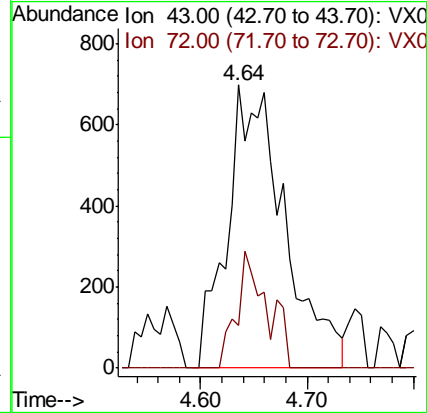
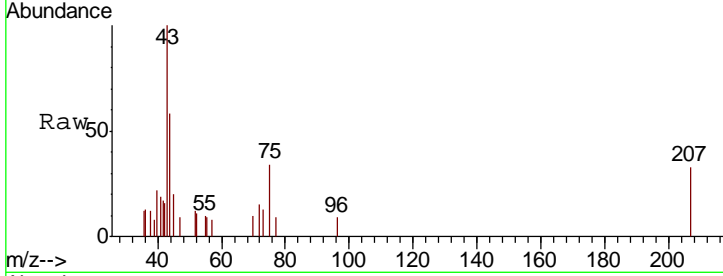




#25  
 2-Butanone  
 Concen: 1.239 ug/l  
 RT: 4.64 min Scan# 582  
 Delta R.T. -0.00 min  
 Lab File: VX017174.D  
 Acq: 06 Jul 2020 17:33

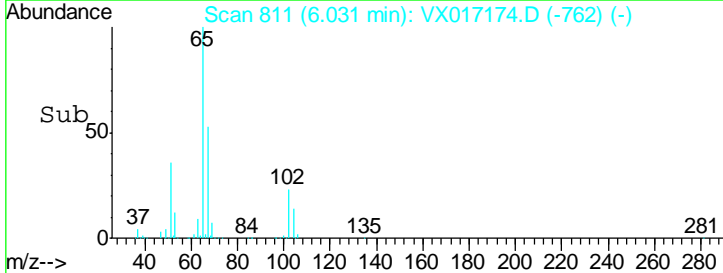
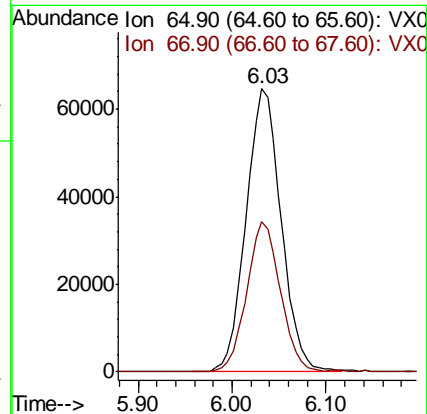
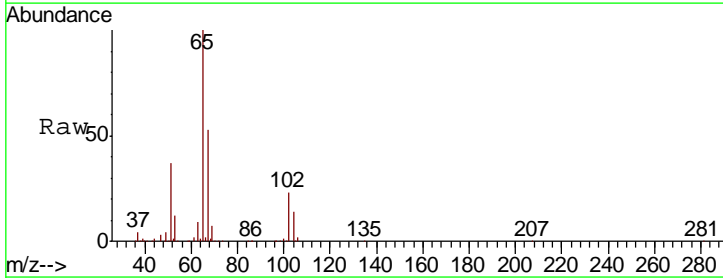
Instrument :  
 MSVOA\_X  
 ClientSampled :  
 42BR-20200629

Tgt Ion: 43 Resp: 2604  
 Ion Ratio Lower Upper  
 43 100  
 72 15.3 20.8 31.2#

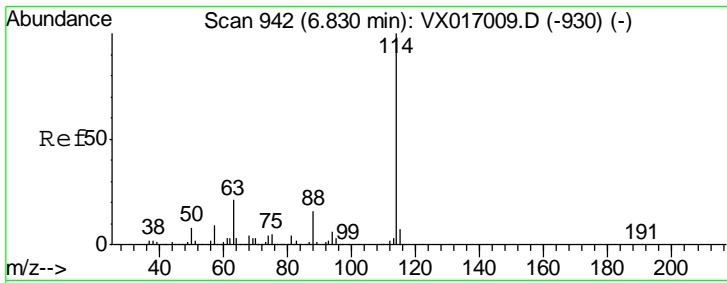


#33  
 1,2-Dichloroethane-d4  
 Concen: 50.009 ug/l  
 RT: 6.03 min Scan# 811  
 Delta R.T. -0.00 min  
 Lab File: VX017174.D  
 Acq: 06 Jul 2020 17:33

Tgt Ion: 65 Resp: 168683  
 Ion Ratio Lower Upper  
 65 100  
 67 50.9 0.0 103.8



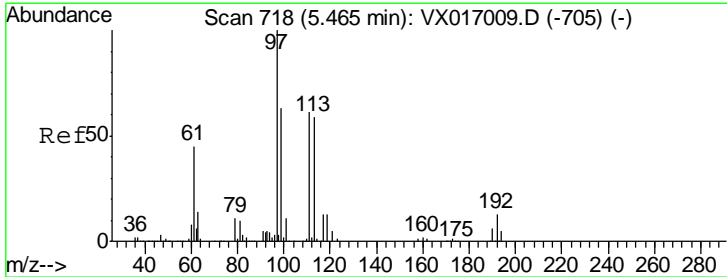
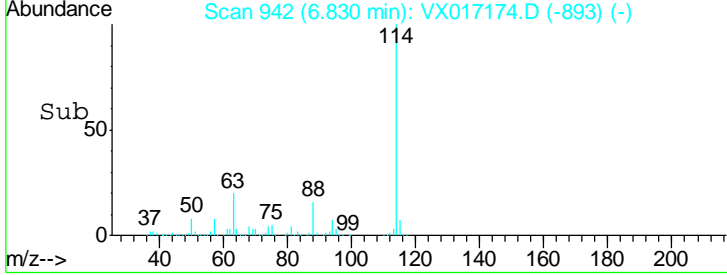
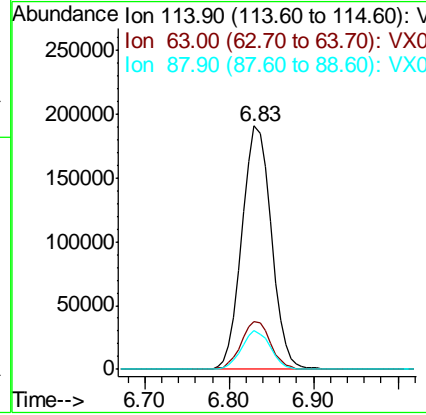
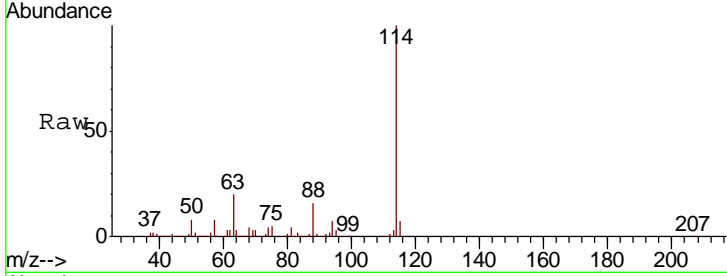




#34  
 1,4-Difluorobenzene  
 Concen: 50.000 ug/l  
 RT: 6.83 min Scan# 942  
 Delta R.T. -0.00 min  
 Lab File: VX017174.D  
 Acq: 06 Jul 2020 17:33

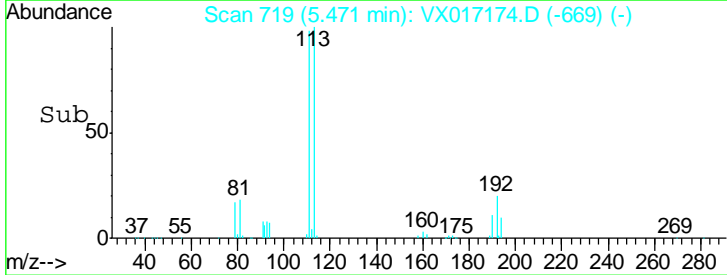
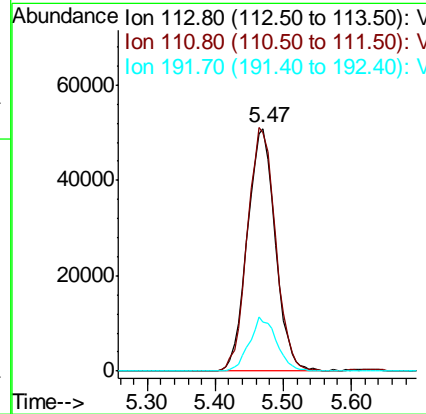
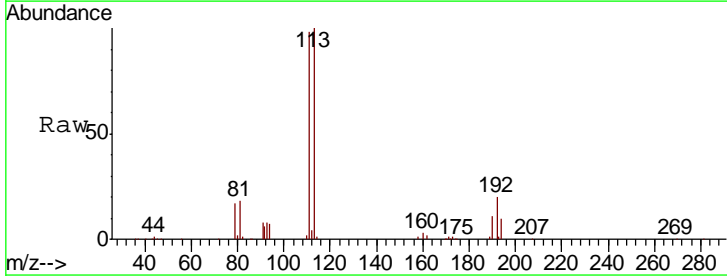
Instrument : MSVOA\_X  
 ClientSampleId : 42BR-20200629

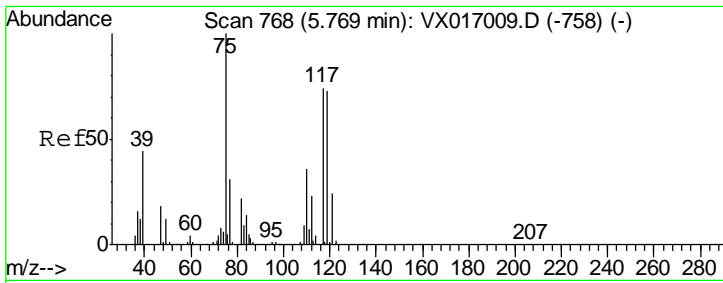
Tgt Ion	Resp	Lower	Upper
114	100		
63	19.7	0.0	41.4
88	15.9	0.0	32.4



#35  
 Dibromofluoromethane  
 Concen: 50.997 ug/l  
 RT: 5.47 min Scan# 719  
 Delta R.T. 0.01 min  
 Lab File: VX017174.D  
 Acq: 06 Jul 2020 17:33

Tgt Ion	Resp	Lower	Upper
113	100		
111	101.1	81.9	122.9
192	21.7	16.7	25.1

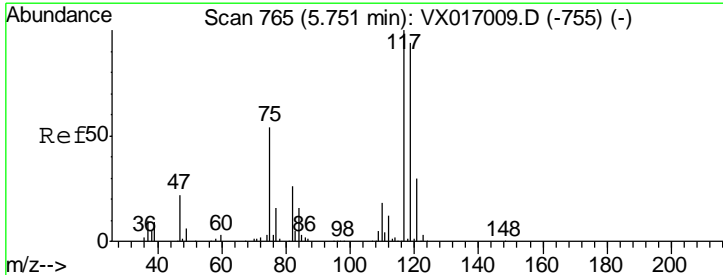
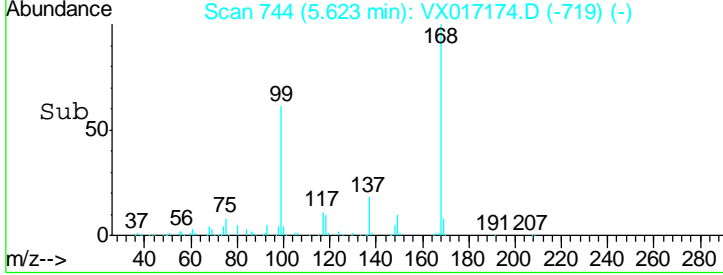
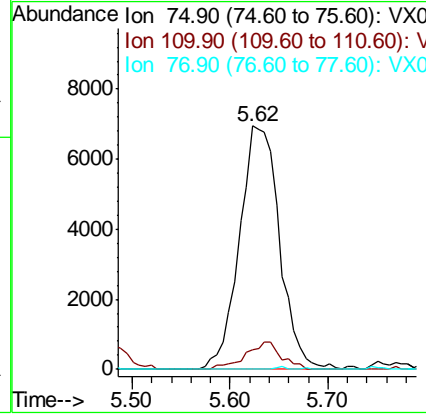
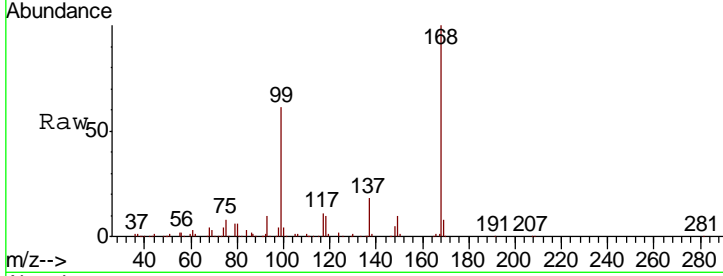




#36  
 1,1-Dichloropropene  
 Concen: 4.631 ug/l  
 RT: 5.62 min Scan# 744  
 Delta R.T. -0.15 min  
 Lab File: VX017174.D  
 Acq: 06 Jul 2020 17:33

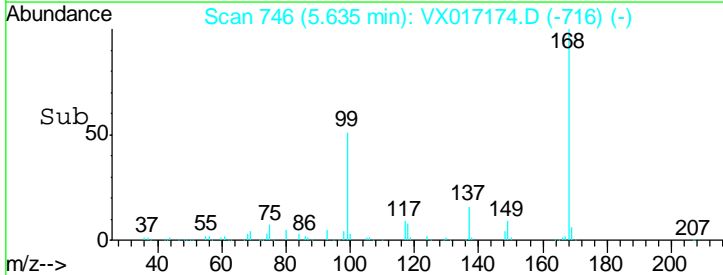
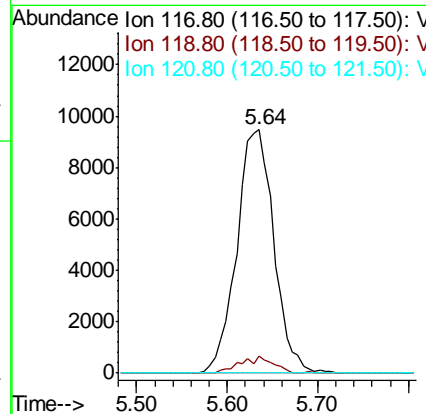
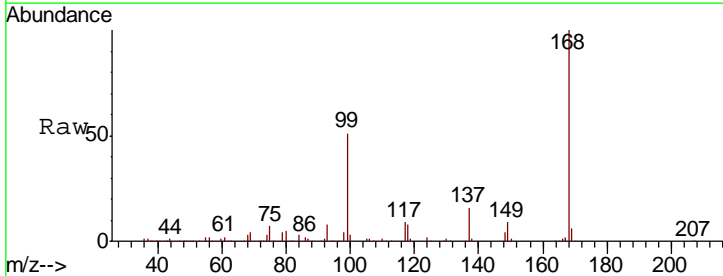
**Instrument :**  
 MSVOA\_X  
**ClientSampled :**  
 42BR-20200629

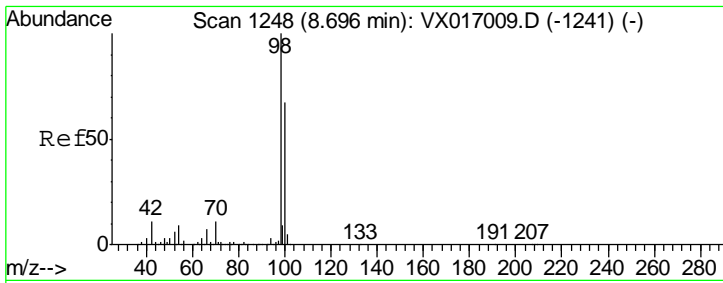
Tgt Ion	Resp	Lower	Upper
75	19754		
75	100		
110	10.1	18.1	54.1#
77	0.0	24.6	37.0#



#38  
 Carbon Tetrachloride  
 Concen: 5.714 ug/l  
 RT: 5.64 min Scan# 746  
 Delta R.T. -0.12 min  
 Lab File: VX017174.D  
 Acq: 06 Jul 2020 17:33

Tgt Ion	Resp	Lower	Upper
117	26848		
117	100		
119	7.1	75.4	113.0#
121	0.0	23.8	35.6#

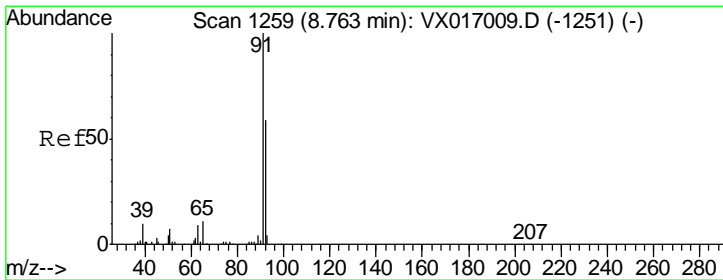
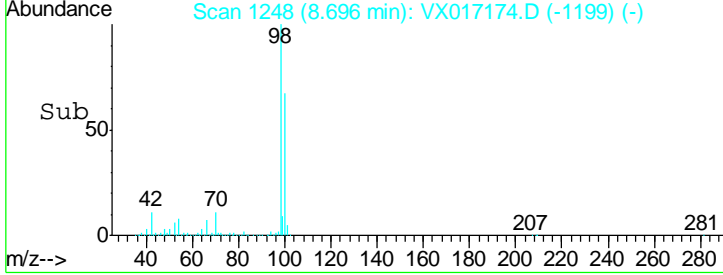
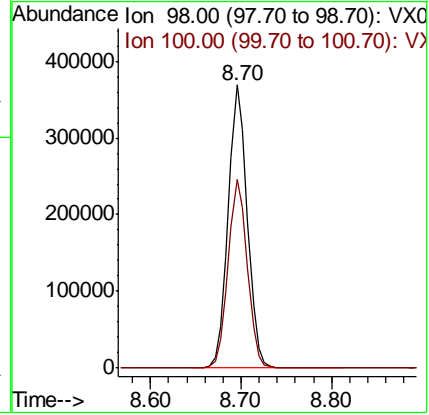
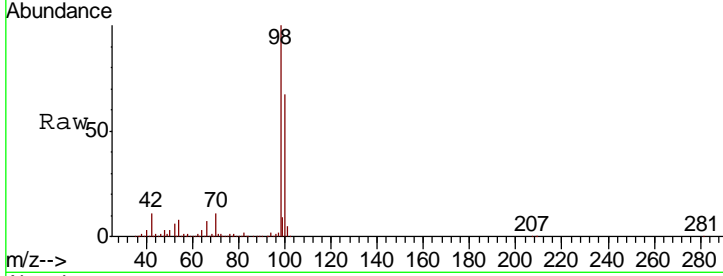




#50  
 Toluene-d8  
 Concen: 51.411 ug/l  
 RT: 8.70 min Scan# 1248  
 Delta R.T. -0.00 min  
 Lab File: VX017174.D  
 Acq: 06 Jul 2020 17:33

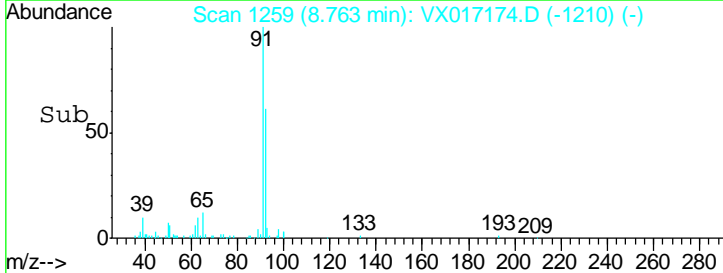
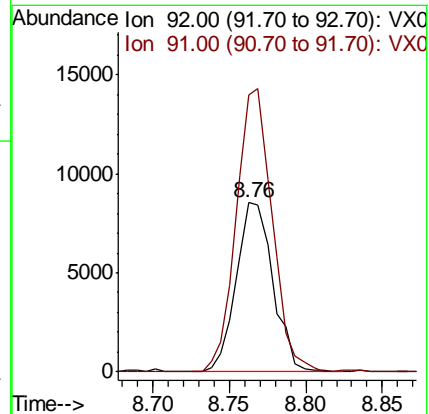
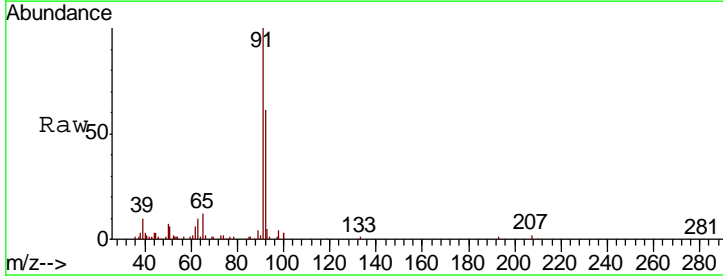
Instrument :  
 MSVOA\_X  
 ClientSampled :  
 42BR-20200629

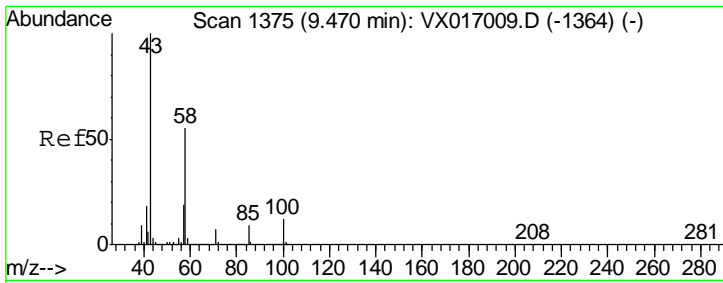
Tgt Ion	Resp	Lower	Upper
98	542770		
100	66.9	53.8	80.6



#52  
 Toluene  
 Concen: 1.824 ug/l  
 RT: 8.76 min Scan# 1259  
 Delta R.T. -0.00 min  
 Lab File: VX017174.D  
 Acq: 06 Jul 2020 17:33

Tgt Ion	Resp	Lower	Upper
92	14274		
91	163.3	136.9	205.3

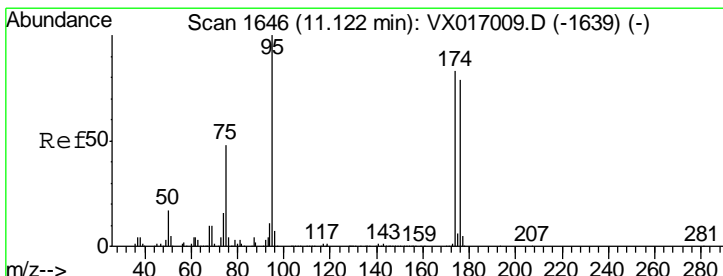
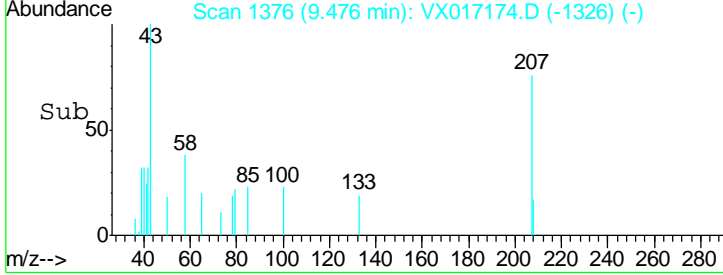
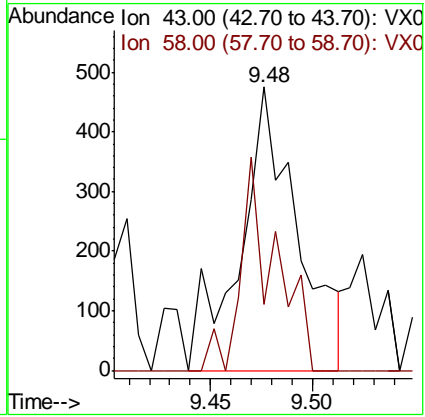
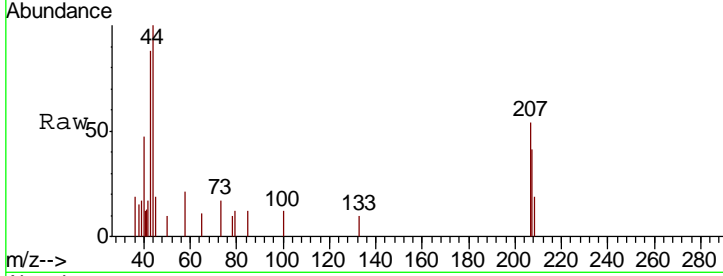




#59  
 2-Hexanone  
 Concen: 0.298 ug/l  
 RT: 9.48 min Scan# 1376  
 Delta R.T. 0.01 min  
 Lab File: VX017174.D  
 Acq: 06 Jul 2020 17:33

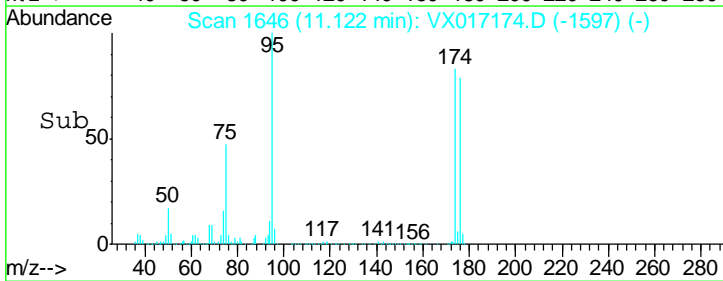
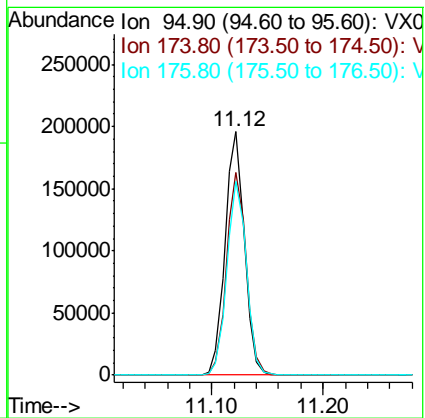
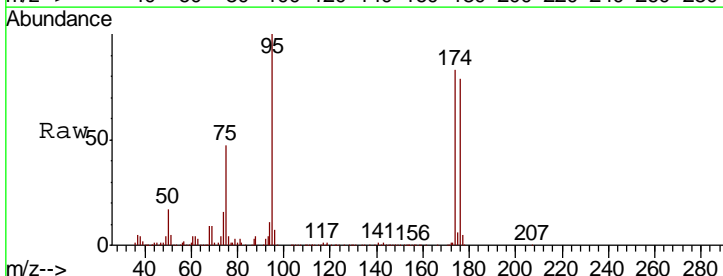
**Instrument :**  
 MSVOA\_X  
**ClientSampled :**  
 42BR-20200629

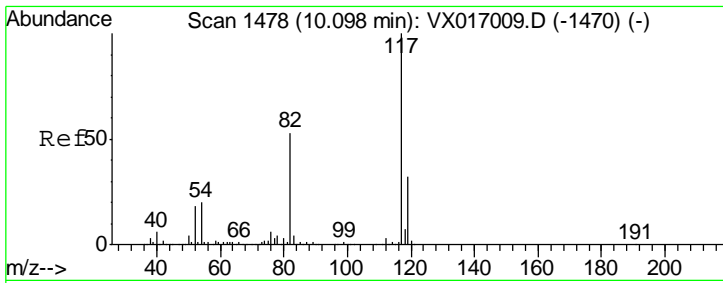
Tgt Ion	Resp	Lower	Upper
43	100		
58	45.4	27.9	83.6



#62  
 4-Bromofluorobenzene  
 Concen: 56.846 ug/l  
 RT: 11.12 min Scan# 1646  
 Delta R.T. -0.00 min  
 Lab File: VX017174.D  
 Acq: 06 Jul 2020 17:33

Tgt Ion	Resp	Lower	Upper
95	100		
174	84.7	0.0	164.0
176	80.8	0.0	157.6

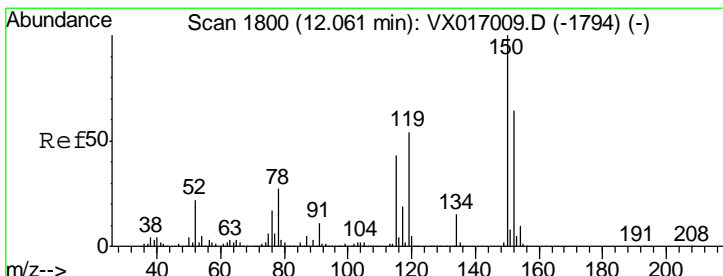
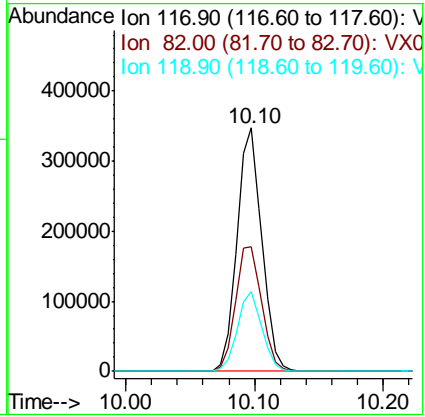
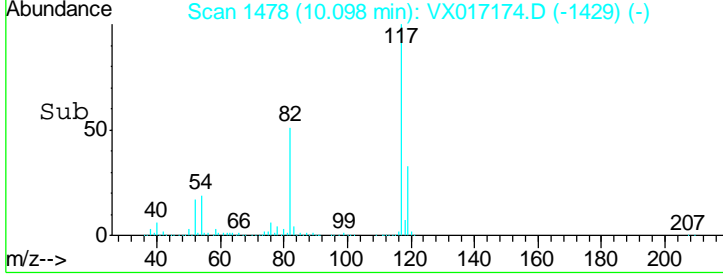
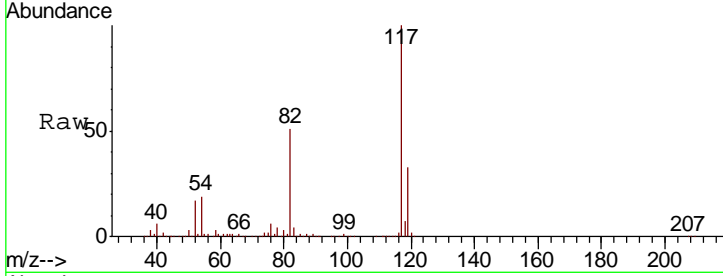




#63  
 Chlorobenzene-d5  
 Concen: 50.000 ug/l  
 RT: 10.10 min Scan# 1478  
 Delta R.T. -0.00 min  
 Lab File: VX017174.D  
 Acq: 06 Jul 2020 17:33

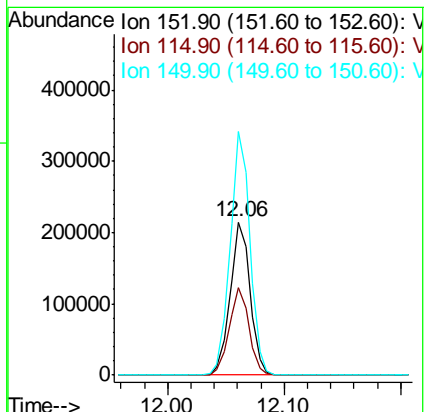
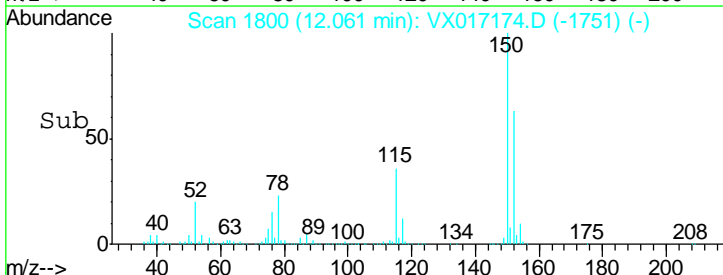
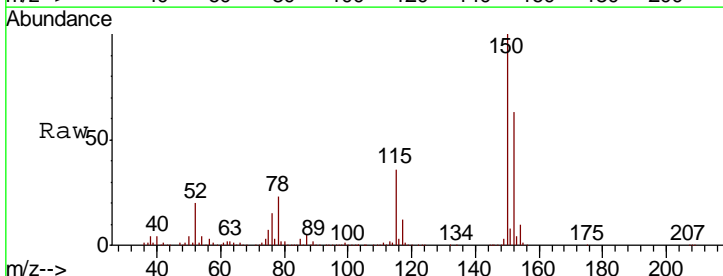
Instrument : MSVOA\_X  
 ClientSampleId : 42BR-20200629

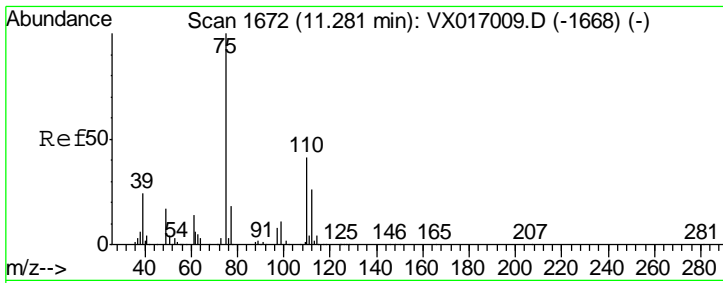
Tgt Ion	Resp	Lower	Upper
117	463233		
82	51.4	42.6	63.8
119	32.6	25.4	38.2



#72  
 1,4-Dichlorobenzene-d4  
 Concen: 50.000 ug/l  
 RT: 12.06 min Scan# 1800  
 Delta R.T. -0.00 min  
 Lab File: VX017174.D  
 Acq: 06 Jul 2020 17:33

Tgt Ion	Resp	Lower	Upper
152	255117		
115	56.3	40.9	122.7
150	158.2	0.0	351.6

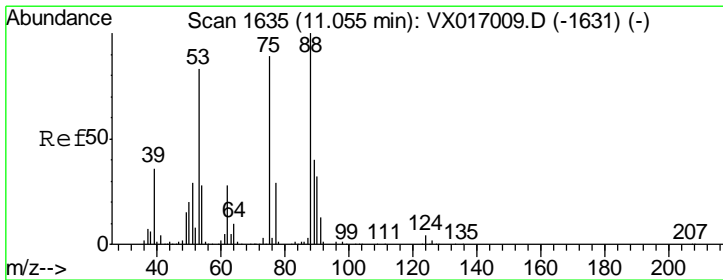
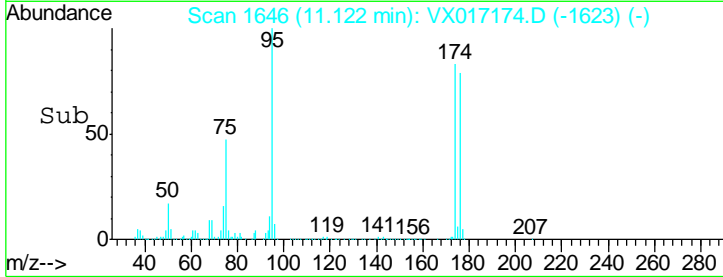
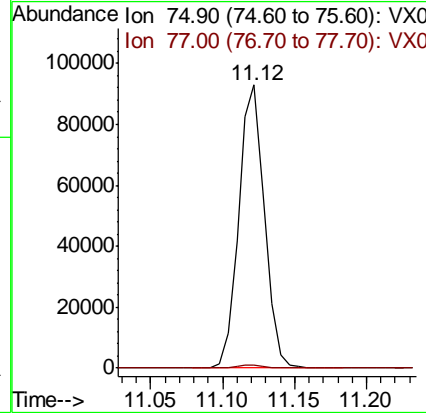
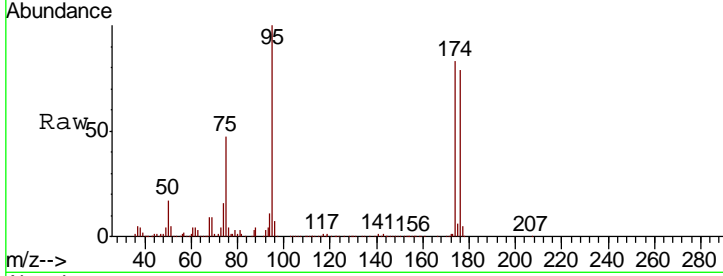




#76  
 1,2,3-Trichloropropane  
 Concen: 23.053 ug/l  
 RT: 11.12 min Scan# 1646  
 Delta R.T. -0.16 min  
 Lab File: VX017174.D  
 Acq: 06 Jul 2020 17:33

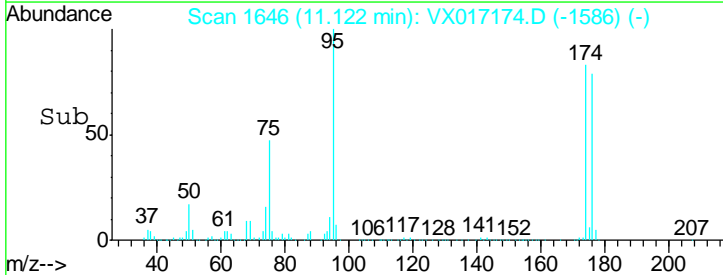
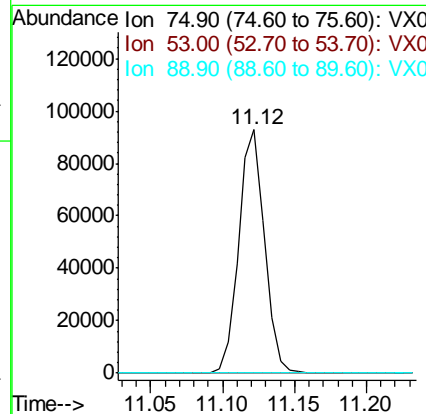
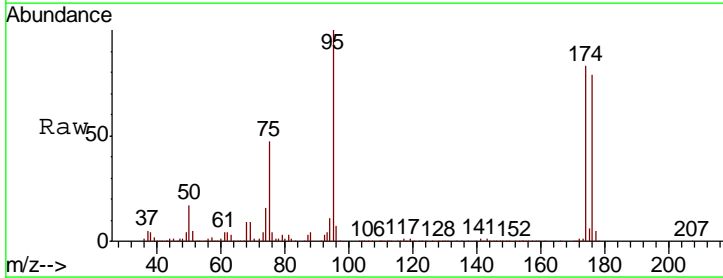
Instrument :  
 MSVOA\_X  
 ClientSampled :  
 42BR-20200629

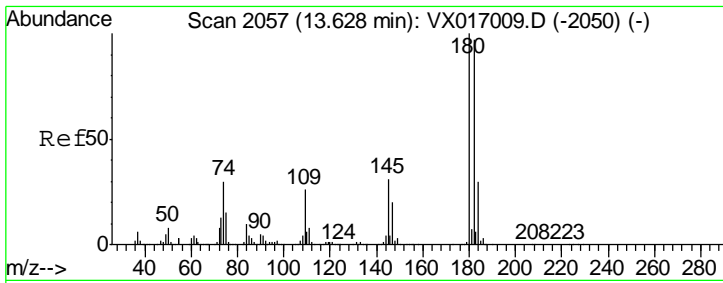
Tgt Ion: 75 Resp: 115650  
 Ion Ratio Lower Upper  
 75 100  
 77 1.3 20.2 60.6#



#81  
 trans-1,4-Dichloro-2-butene  
 Concen: 59.699 ug/l  
 RT: 11.12 min Scan# 1646  
 Delta R.T. 0.07 min  
 Lab File: VX017174.D  
 Acq: 06 Jul 2020 17:33

Tgt Ion: 75 Resp: 115650  
 Ion Ratio Lower Upper  
 75 100  
 53 0.1 72.4 108.6#  
 89 0.0 37.0 55.4#

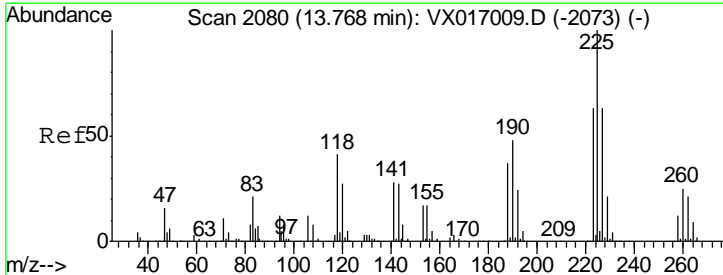
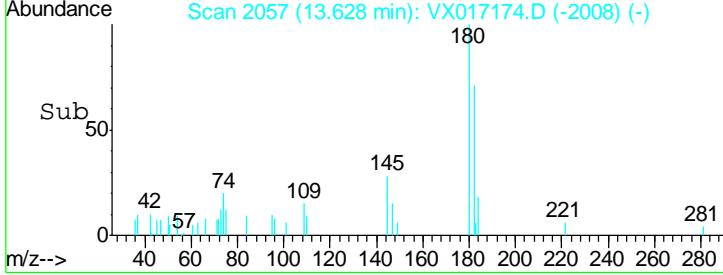
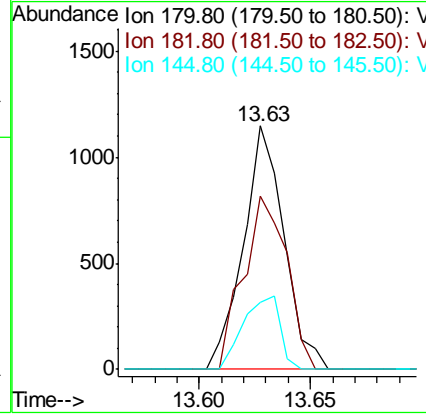
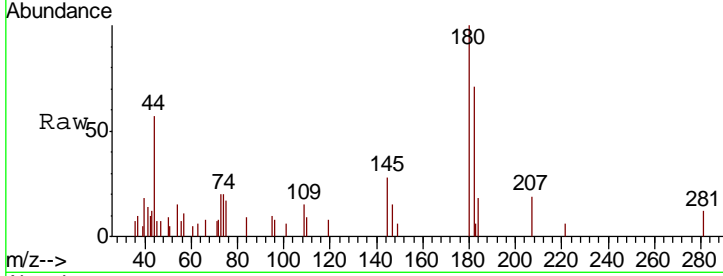




#93  
 1,2,4-Trichlorobenzene  
 Concen: 0.275 ug/l  
 RT: 13.63 min Scan# 2057  
 Delta R.T. -0.00 min  
 Lab File: VX017174.D  
 Acq: 06 Jul 2020 17:33

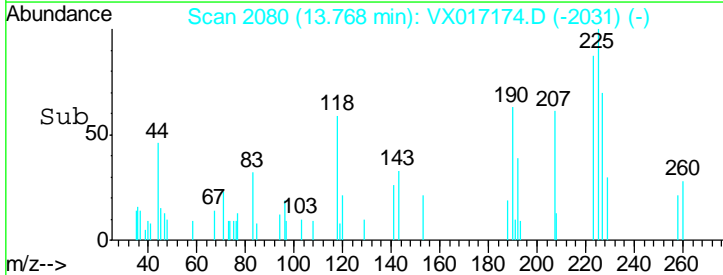
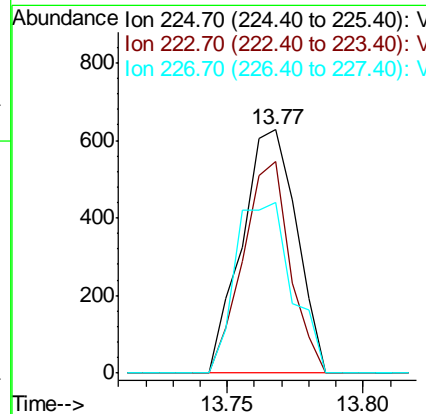
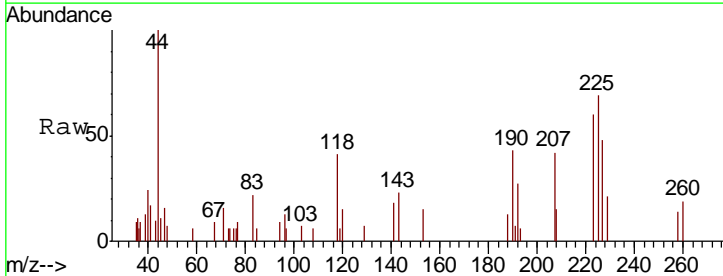
Instrument : MSVOA\_X  
 ClientSampled : 42BR-20200629

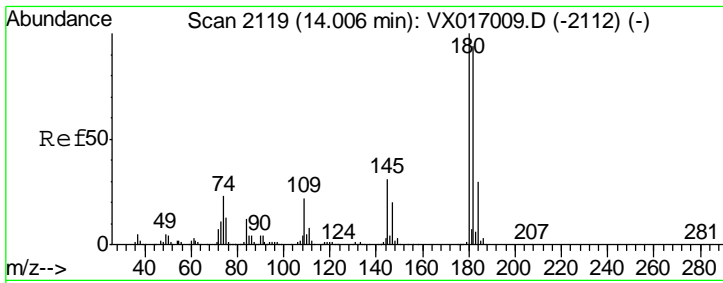
Tgt Ion	Resp	Lower	Upper
180	1465		
182	75.4	47.3	141.9
145	27.4	15.4	46.2



#94  
 Hexachlorobutadiene  
 Concen: 1.270 ug/l  
 RT: 13.77 min Scan# 2080  
 Delta R.T. 0.00 min  
 Lab File: VX017174.D  
 Acq: 06 Jul 2020 17:33

Tgt Ion	Resp	Lower	Upper
225	874		
223	74.8	32.5	97.5
227	72.7	33.1	99.2





#96  
 1,2,3-Trichlorobenzene  
 Concen: 0.203 ug/l  
 RT: 14.00 min Scan# 2118  
 Delta R.T. -0.01 min  
 Lab File: VX017174.D  
 Acq: 06 Jul 2020 17:33

Instrument : MSVOA\_X  
 ClientSampled : 42BR-20200629

Tot Ion	Ion	Ratio	Lower	Upper
	180	100		
	182	87.0	47.1	141.4
	145	49.5	16.6	49.7

