

Data Path : Z:\VOASRV\HPCHEM1\MSVOA X\DATA\VX070620\
 Data File : VX017184.D
 Acq On : 06 Jul 2020 21:21
 Operator : JC/SP
 Sample : L3159-18
 Misc : 5.0mL/MSVOA X/WATER
 ALS Vial : 24 Sample Multiplier: 1

Instrument :
 MSVOA_X
 ClientSampleId :
 51BR-20200629

Quant Time: Jul 07 06:54:22 2020
 Quant Method : Z:\VOASRV\HPCHEM1\MSVOA_X\METHOD\82X062920W.M
 Quant Title : SW846 8260
 QLast Update : Mon Jun 29 17:10:38 2020
 Response via : Initial Calibration

Internal Standards	R.T.	QIon	Response	Conc	Units	Dev(Min)
1) Pentafluorobenzene	5.63	168	258280	50.00	ug/l	0.00
34) 1,4-Difluorobenzene	6.83	114	428946	50.00	ug/l	0.00
63) Chlorobenzene-d5	10.10	117	439617	50.00	ug/l	0.00
72) 1,4-Dichlorobenzene-d4	12.06	152	242813	50.00	ug/l	0.00

System Monitoring Compounds

33) 1,2-Dichloroethane-d4	6.03	65	166969	52.44	ug/l	0.00
Spiked Amount	50.000		Recovery	=	104.88%	
35) Dibromofluoromethane	5.47	113	142183	52.40	ug/l	0.00
Spiked Amount	50.000		Recovery	=	104.80%	
50) Toluene-d8	8.70	98	526036	52.43	ug/l	0.00
Spiked Amount	50.000		Recovery	=	104.86%	
62) 4-Bromofluorobenzene	11.12	95	224477	57.23	ug/l	0.00
Spiked Amount	50.000		Recovery	=	114.46%	

Target Compounds

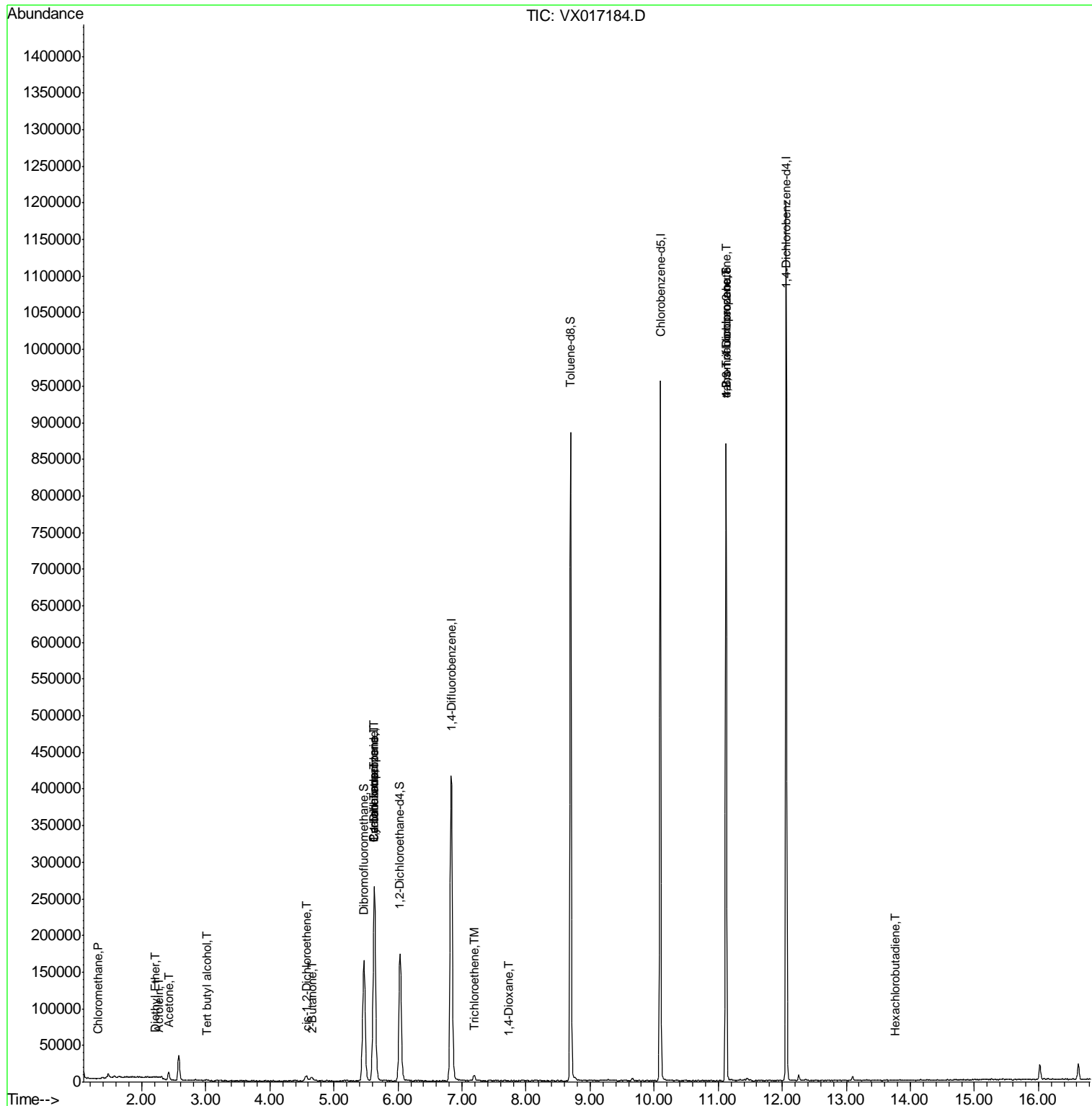
						Qvalue
3) Chloromethane	1.32	50	724	0.239	ug/l #	83
8) Diethyl Ether	2.20	74	73	0.417	ug/l	83
11) Tert butyl alcohol	3.01	59	1078	1.775	ug/l	97
13) Acrolein	2.26	56	223	0.614	ug/l #	1
16) Acetone	2.42	43	10591	8.892	ug/l	91
20) Methylene Chloride	2.83	84	479	Below Cal	#	84
25) 2-Butanone	4.66	43	2456	1.237	ug/l	94
27) cis-1,2-Dichloroethene	4.57	96	4775	1.486	ug/l	80
31) Cyclohexane	5.62	56	5051	1.175	ug/l #	5
36) 1,1-Dichloropropene	5.63	75	19109	4.714	ug/l #	51
38) Carbon Tetrachloride	5.63	117	26150	5.856	ug/l #	17
44) Trichloroethene	7.19	130	3149	0.652	ug/l	98
49) 1,4-Dioxane	7.72	88	47	0.639	ug/l #	1
76) 1,2,3-Trichloropropane	11.12	75	112988	23.663	ug/l #	37
81) trans-1,4-Dichloro-2-buten	11.12	75	112988	61.280	ug/l #	13
88) 1,4-Dichlorobenzene	12.06	146	558	Below Cal	#	1
94) Hexachlorobutadiene	13.76	225	21	0.855	ug/l #	1

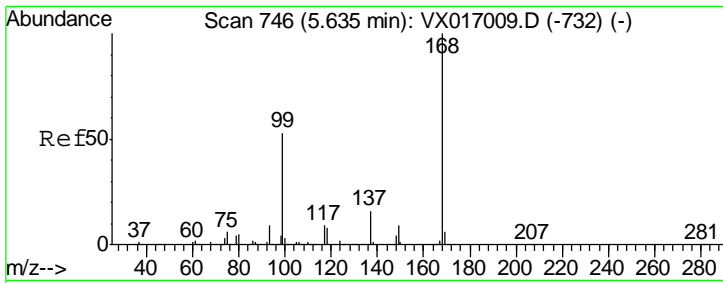
(#) = qualifier out of range (m) = manual integration (+) = signals summed

Data Path : Z:\VOASRV\HPCHEM1\MSVOA X\DATA\VX070620\
 Data File : VX017184.D
 Acq On : 06 Jul 2020 21:21
 Operator : JC/SP
 Sample : L3159-18
 Misc : 5.0mL/MSVOA X/WATER
 ALS Vial : 24 Sample Multiplier: 1

Instrument :
 MSVOA_X
 ClientSampled :
 51BR-20200629

Quant Time: Jul 07 06:54:22 2020
 Quant Method : Z:\VOASRV\HPCHEM1\MSVOA_X\METHOD\82X062920W.M
 Quant Title : SW846 8260
 QLast Update : Mon Jun 29 17:10:38 2020
 Response via : Initial Calibration

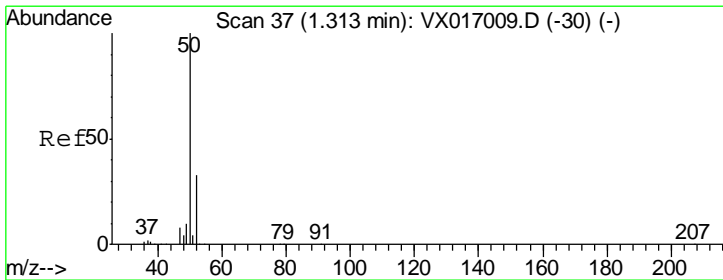
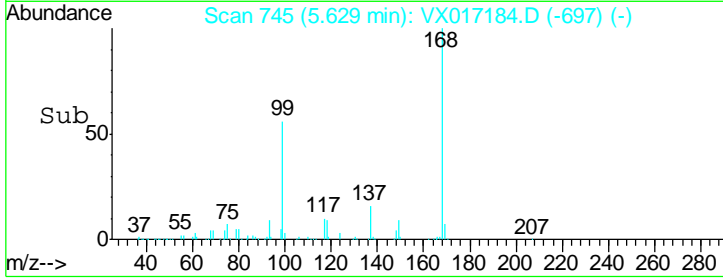
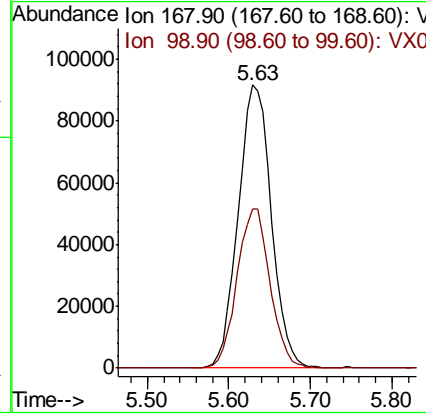
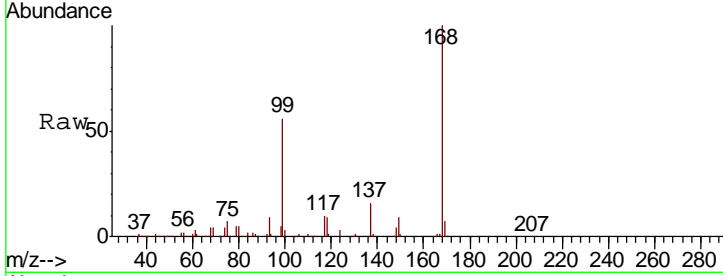




#1
 Pentafluorobenzene
 Concen: 50.000 ug/l
 RT: 5.63 min Scan# 745
 Delta R.T. -0.01 min
 Lab File: VX017184.D
 Acq: 06 Jul 2020 21:21

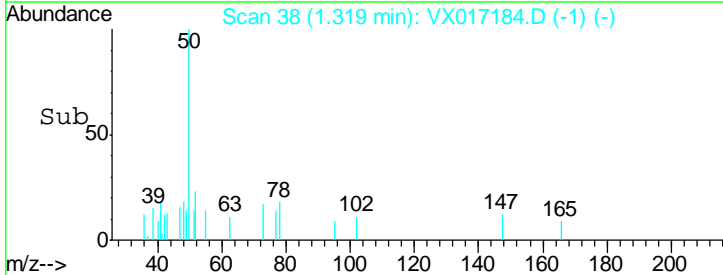
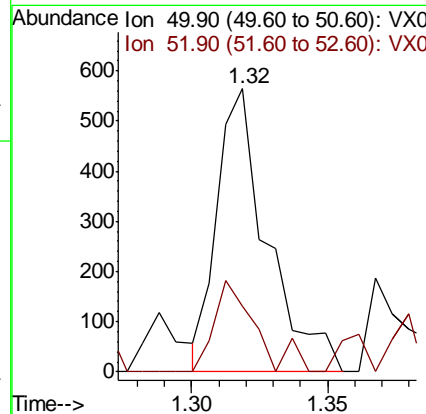
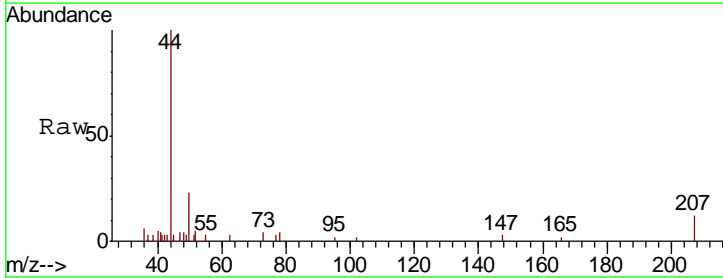
Instrument :
 MSVOA_X
 ClientSampled :
 51BR-20200629

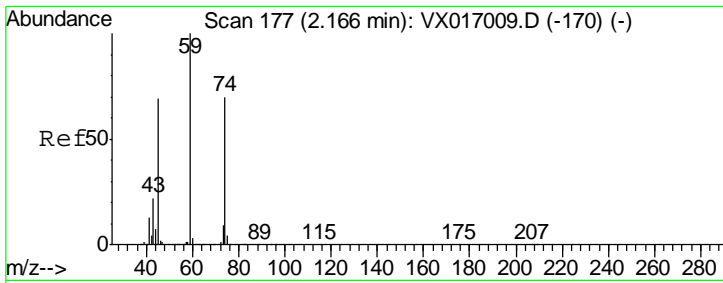
Tgt Ion: 168 Resp: 258280
 Ion Ratio Lower Upper
 168 100
 99 56.1 42.6 64.0



#3
 Chloromethane
 Concen: 0.239 ug/l
 RT: 1.32 min Scan# 38
 Delta R.T. 0.01 min
 Lab File: VX017184.D
 Acq: 06 Jul 2020 21:21

Tgt Ion: 50 Resp: 724
 Ion Ratio Lower Upper
 50 100
 52 23.2 26.1 39.1#

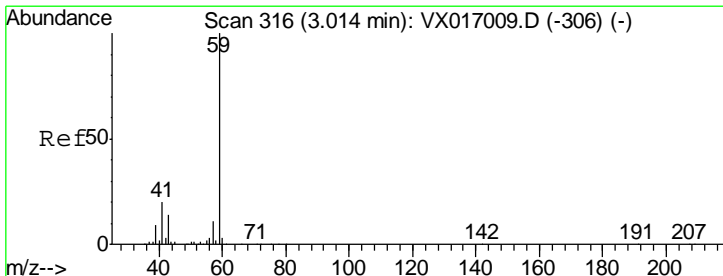
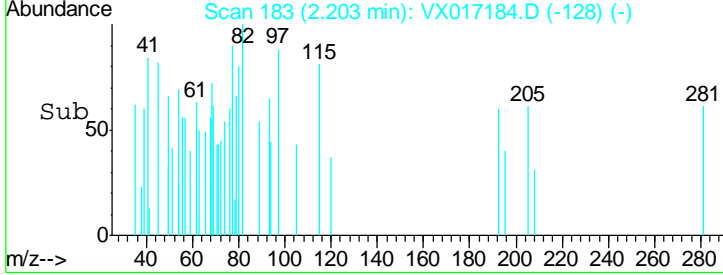
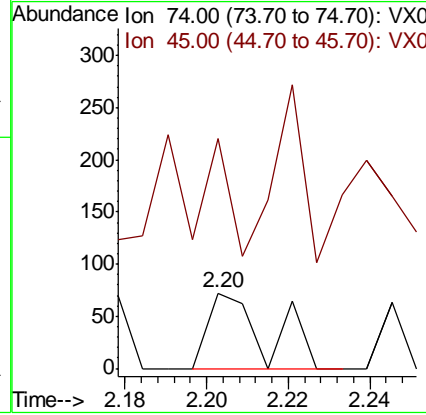
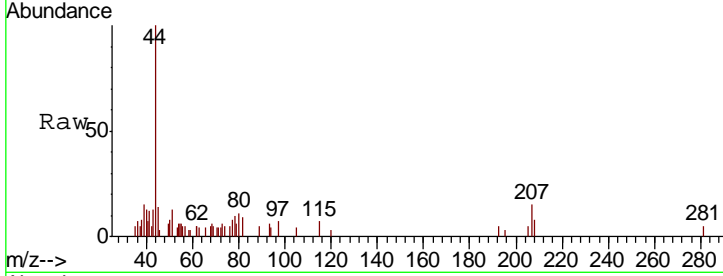




#8
 Diethyl Ether
 Concen: 0.417 ug/l
 RT: 2.20 min Scan# 183
 Delta R.T. 0.04 min
 Lab File: VX017184.D
 Acq: 06 Jul 2020 21:21

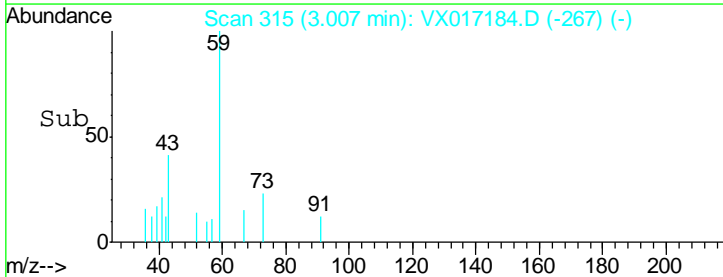
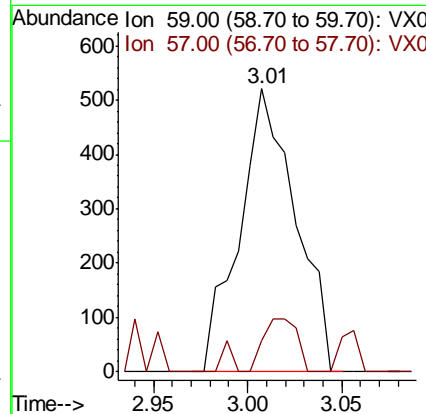
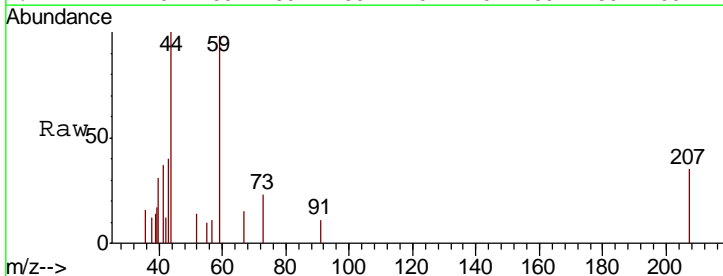
Instrument :
 MSVOA_X
ClientSampled :
 51BR-20200629

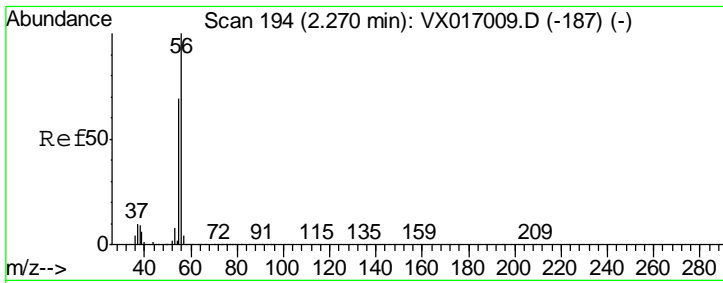
Tgt Ion: 74 Resp: 73
 Ion Ratio Lower Upper
 74 100
 45 116.4 49.8 149.3



#11
 Tert butyl alcohol
 Concen: 1.775 ug/l
 RT: 3.01 min Scan# 315
 Delta R.T. -0.01 min
 Lab File: VX017184.D
 Acq: 06 Jul 2020 21:21

Tgt Ion: 59 Resp: 1078
 Ion Ratio Lower Upper
 59 100
 57 11.3 8.2 12.2

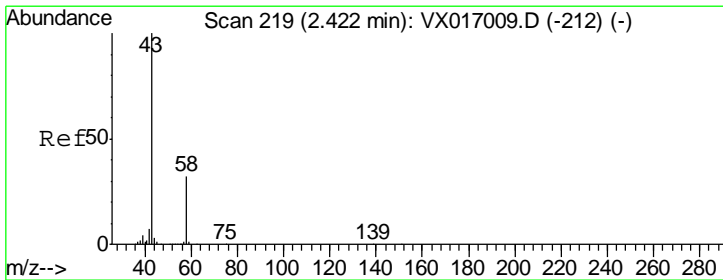
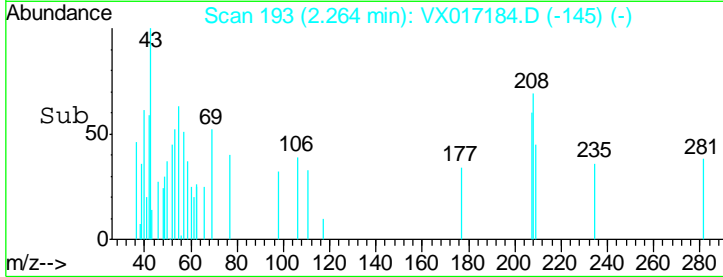
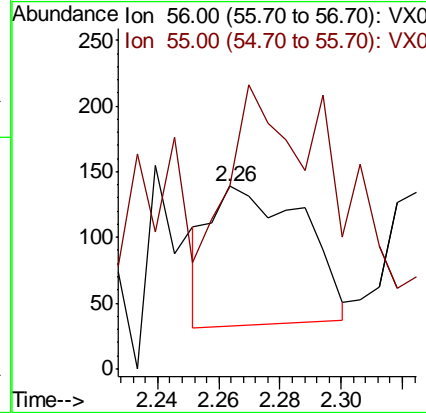
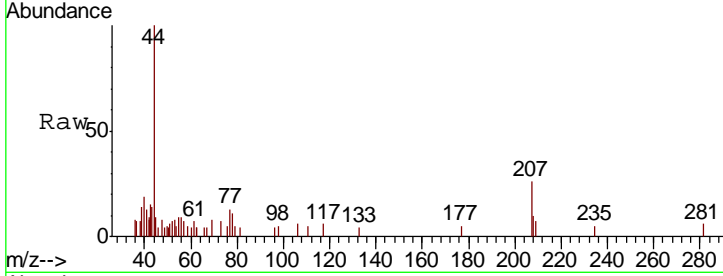




#13
 Acrolein
 Concen: 0.614 ug/l
 RT: 2.26 min Scan# 193
 Delta R.T. -0.01 min
 Lab File: VX017184.D
 Acq: 06 Jul 2020 21:21

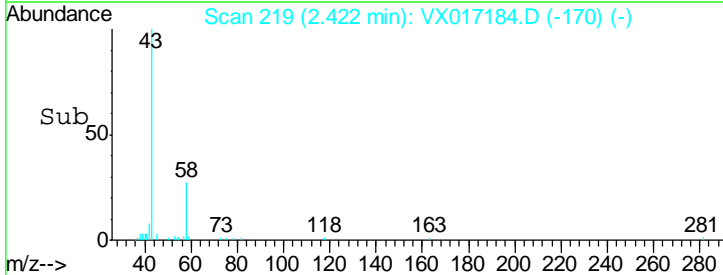
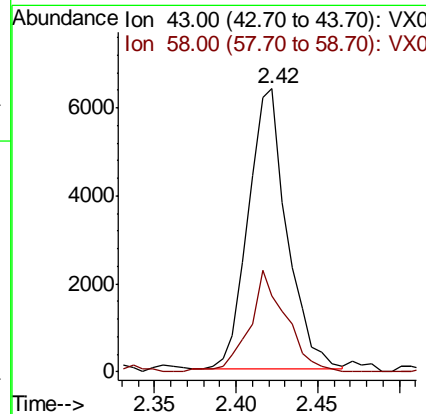
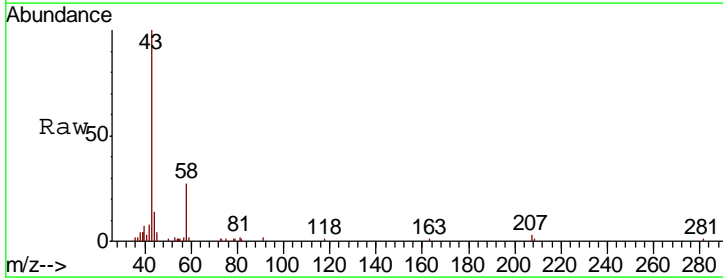
Instrument :
 MSVOA_X
 ClientSampled :
 51BR-20200629

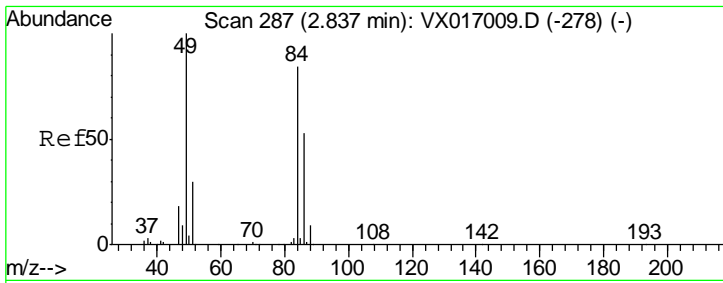
Tgt Ion: 56 Resp: 223
 Ion Ratio Lower Upper
 56 100
 55 152.0 55.7 83.5#



#16
 Acetone
 Concen: 8.892 ug/l
 RT: 2.42 min Scan# 219
 Delta R.T. -0.00 min
 Lab File: VX017184.D
 Acq: 06 Jul 2020 21:21

Tgt Ion: 43 Resp: 10591
 Ion Ratio Lower Upper
 43 100
 58 27.2 25.7 38.5

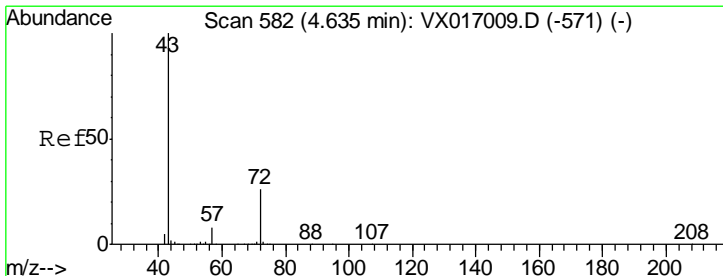
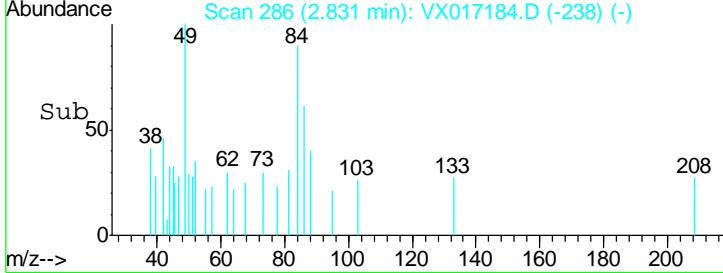
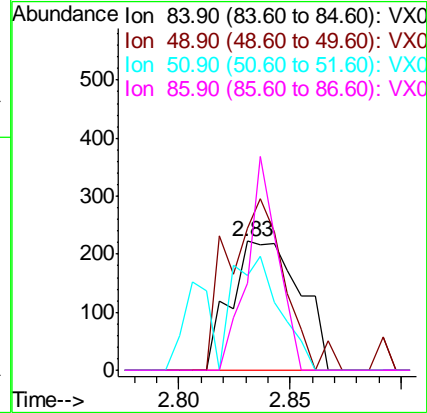
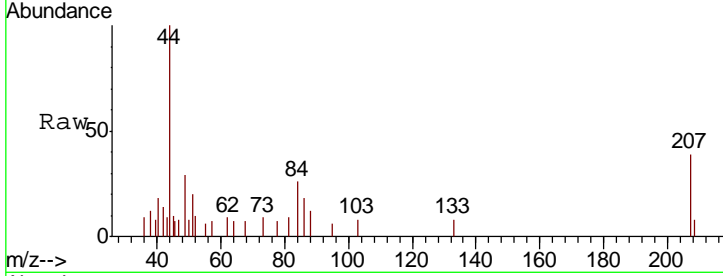




#20
 Methylene Chloride
 Concen: Below Cal
 RT: 2.83 min Scan# 286
 Delta R.T. -0.01 min
 Lab File: VX017184.D
 Acq: 06 Jul 2020 21:21

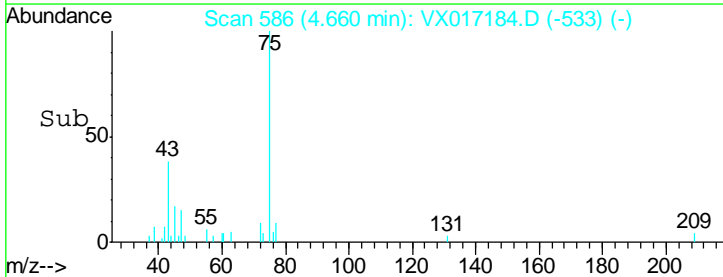
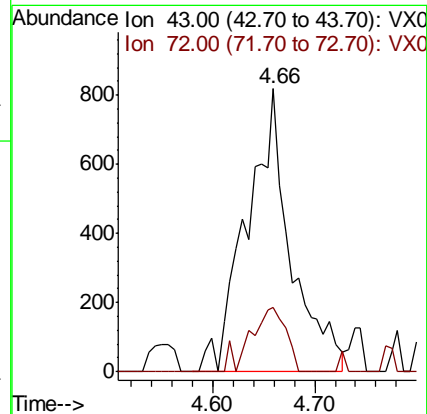
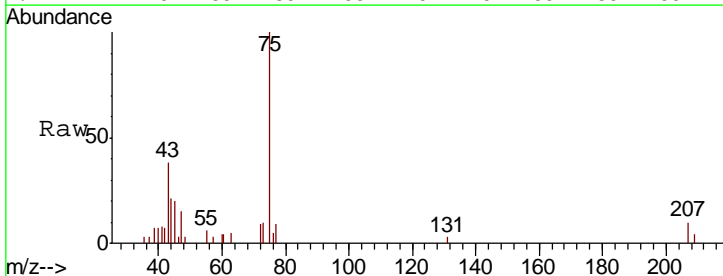
Instrument :
 MSVOA_X
 ClientSampled :
 51BR-20200629

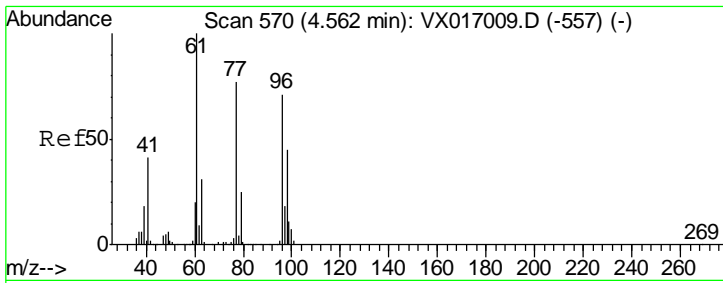
Tgt Ion	Resp	Lower	Upper
84	100		
49	110.8	94.7	142.1
51	73.9	28.6	42.8#
86	68.0	50.5	75.7



#25
 2-Butanone
 Concen: 1.237 ug/l
 RT: 4.66 min Scan# 586
 Delta R.T. 0.02 min
 Lab File: VX017184.D
 Acq: 06 Jul 2020 21:21

Tgt Ion	Resp	Lower	Upper
43	100		
72	22.7	20.8	31.2

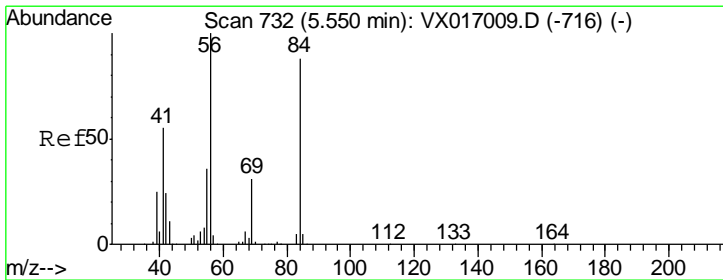
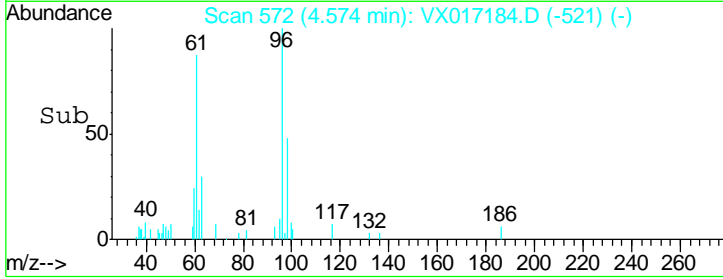
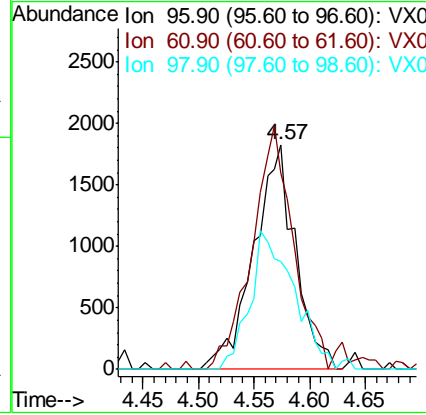
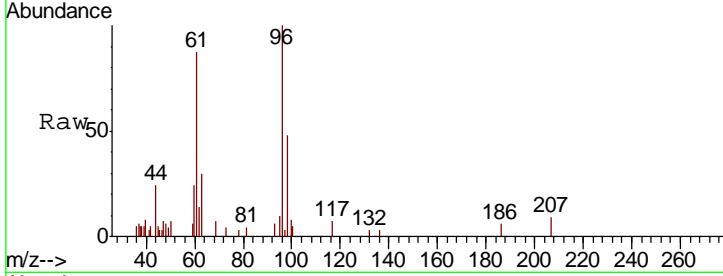




#27
 cis-1,2-Dichloroethene
 Concen: 1.486 ug/l
 RT: 4.57 min Scan# 572
 Delta R.T. 0.01 min
 Lab File: VX017184.D
 Acq: 06 Jul 2020 21:21

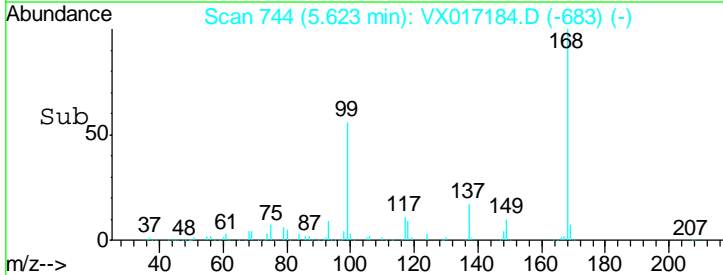
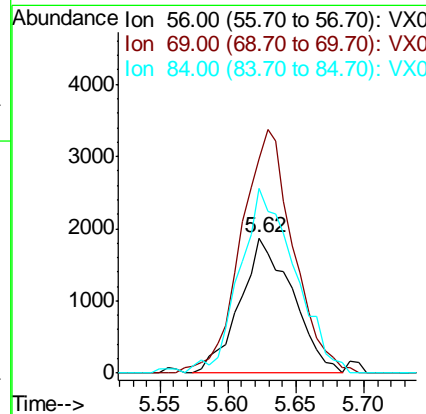
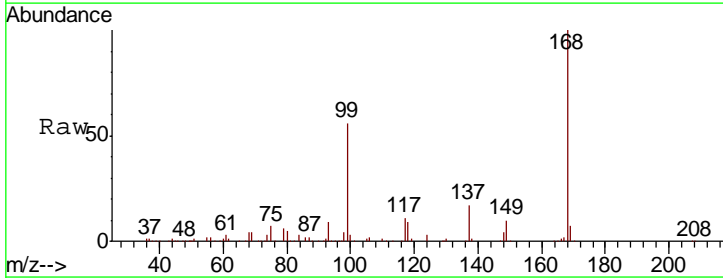
Instrument :
 MSVOA_X
 ClientSampled :
 51BR-20200629

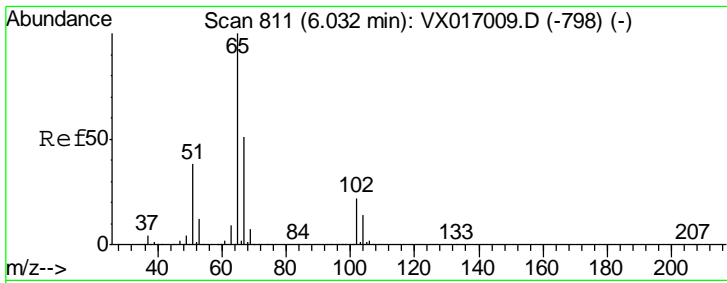
Tgt Ion	Resp	Lower	Upper
96	4775		
Ion Ratio			
96	100		
61	106.8	0.0	282.8
98	65.8	0.0	127.6



#31
 Cyclohexane
 Concen: 1.175 ug/l
 RT: 5.62 min Scan# 744
 Delta R.T. 0.07 min
 Lab File: VX017184.D
 Acq: 06 Jul 2020 21:21

Tgt Ion	Resp	Lower	Upper
56	5051		
Ion Ratio			
56	100		
69	154.4	25.0	37.4#
84	131.8	69.1	103.7#

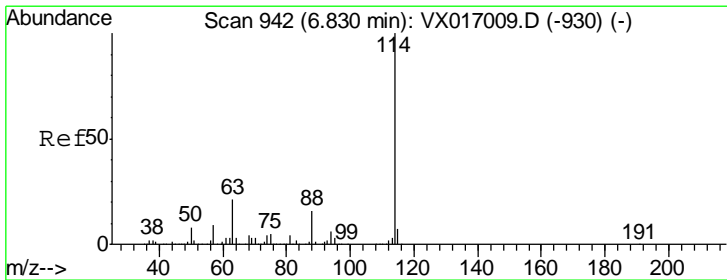
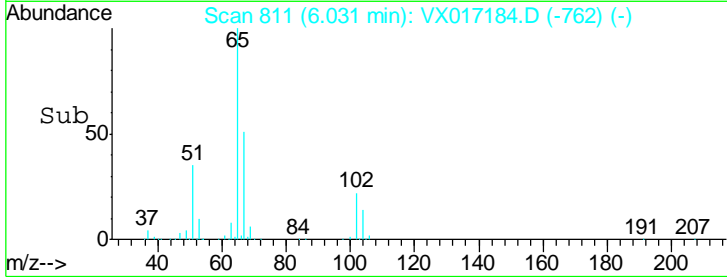
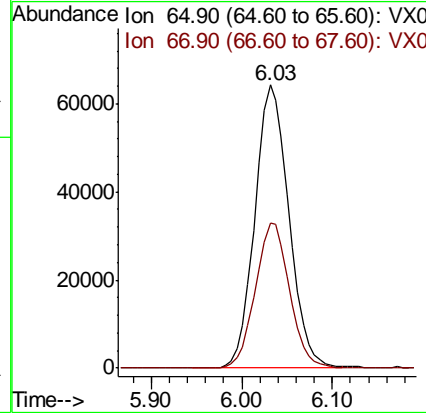
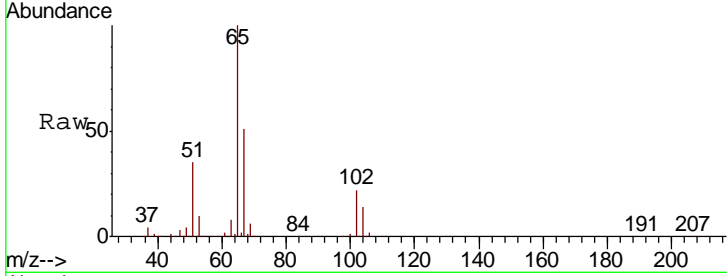




#33
 1,2-Dichloroethane-d4
 Concen: 52.439 ug/l
 RT: 6.03 min Scan# 811
 Delta R.T. -0.00 min
 Lab File: VX017184.D
 Acq: 06 Jul 2020 21:21

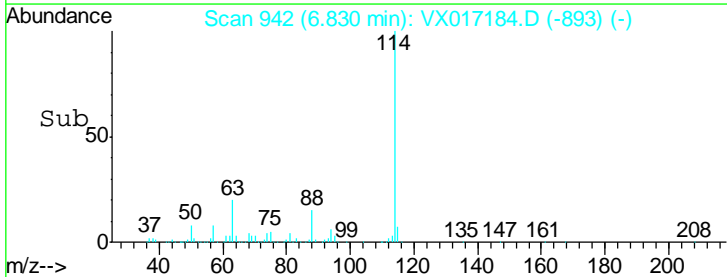
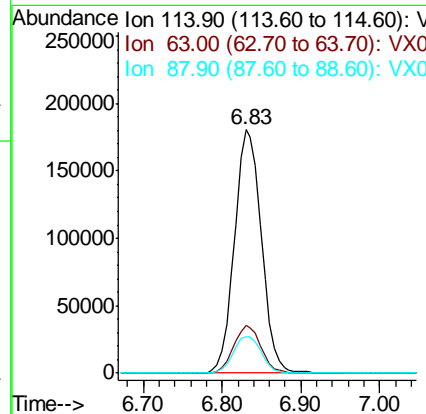
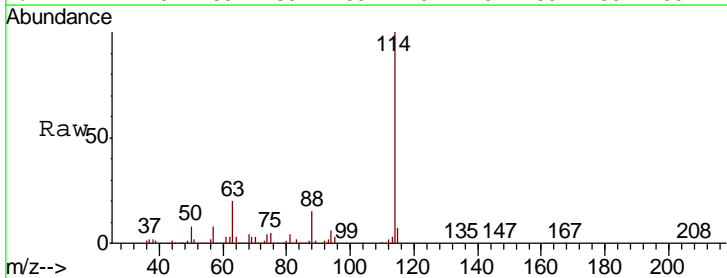
Instrument :
 MSVOA_X
 ClientSampled :
 51BR-20200629

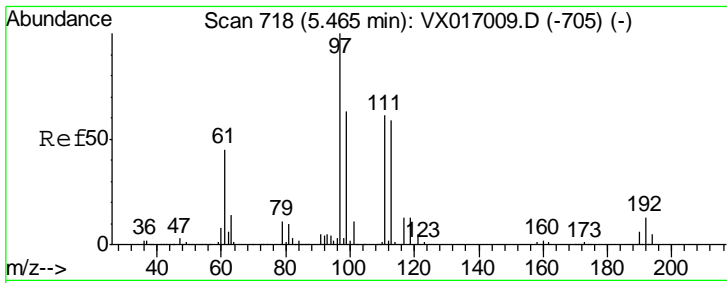
Tot Ion: 65 Resp: 166969
 Ion Ratio Lower Upper
 65 100
 67 51.6 0.0 103.8



#34
 1,4-Difluorobenzene
 Concen: 50.000 ug/l
 RT: 6.83 min Scan# 942
 Delta R.T. -0.00 min
 Lab File: VX017184.D
 Acq: 06 Jul 2020 21:21

Tgt Ion: 114 Resp: 428946
 Ion Ratio Lower Upper
 114 100
 63 19.7 0.0 41.4
 88 14.9 0.0 32.4

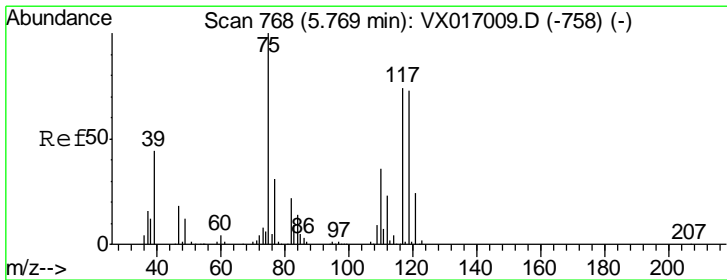
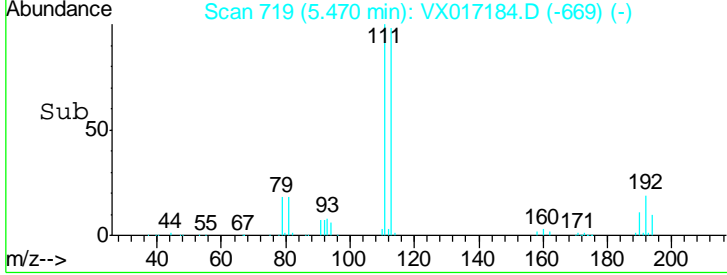
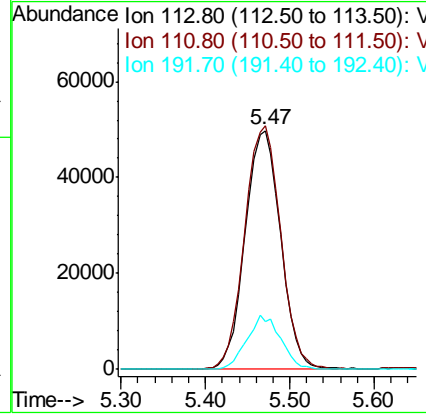
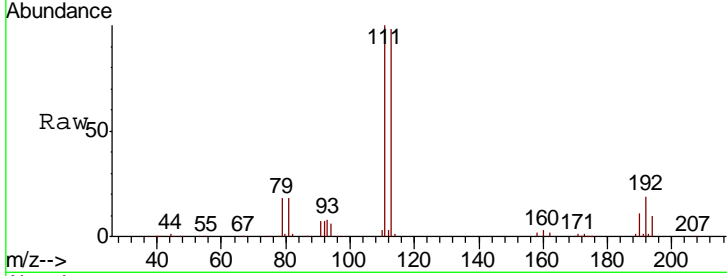




#35
 Dibromofluoromethane
 Concen: 52.401 ug/l
 RT: 5.47 min Scan# 719
 Delta R.T. 0.01 min
 Lab File: VX017184.D
 Acq: 06 Jul 2020 21:21

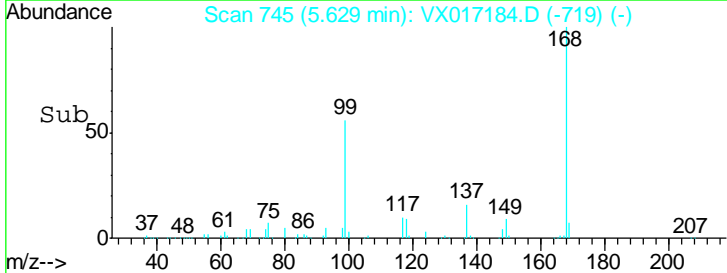
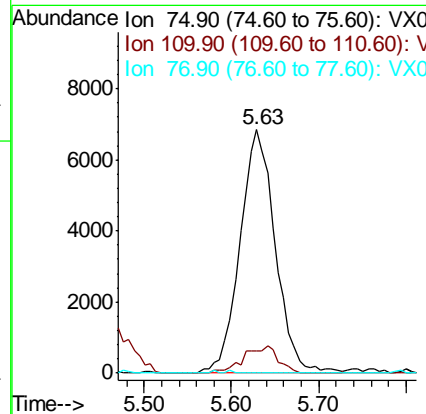
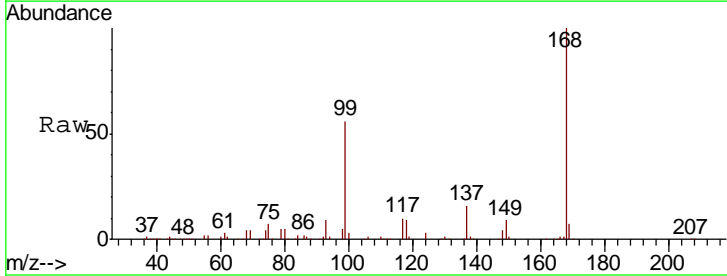
Instrument :
 MSVOA_X
 ClientSampled :
 51BR-20200629

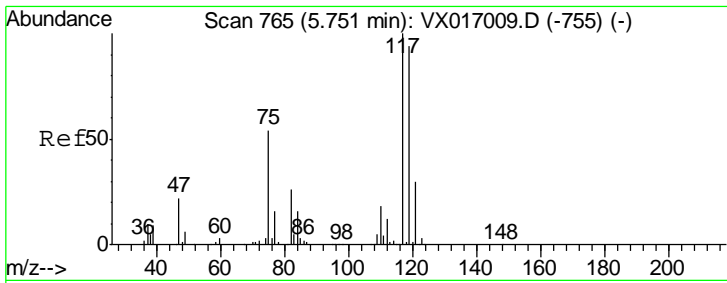
Tgt Ion	Resp	Lower	Upper
113	100		
111	103.7	81.9	122.9
192	21.5	16.7	25.1



#36
 1,1-Dichloropropene
 Concen: 4.714 ug/l
 RT: 5.63 min Scan# 745
 Delta R.T. -0.14 min
 Lab File: VX017184.D
 Acq: 06 Jul 2020 21:21

Tgt Ion	Resp	Lower	Upper
75	100		
110	10.9	18.1	54.1#
77	0.0	24.6	37.0#

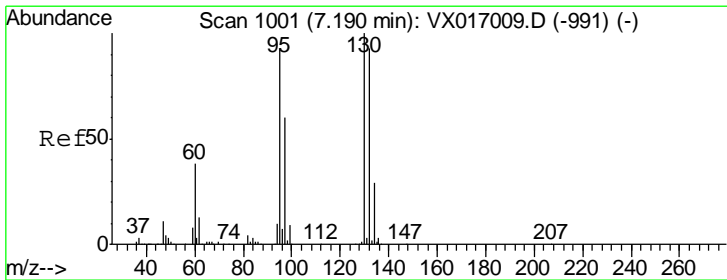
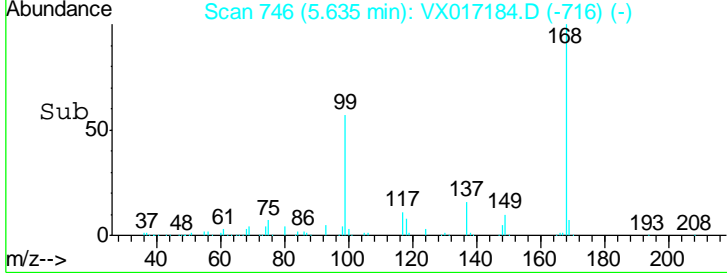
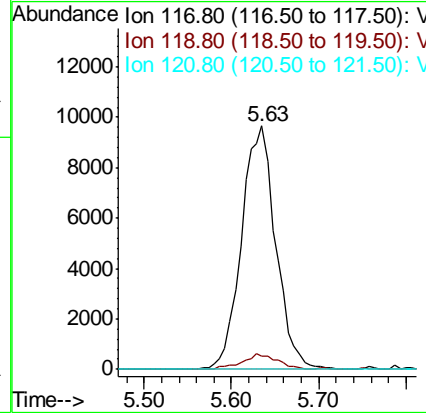
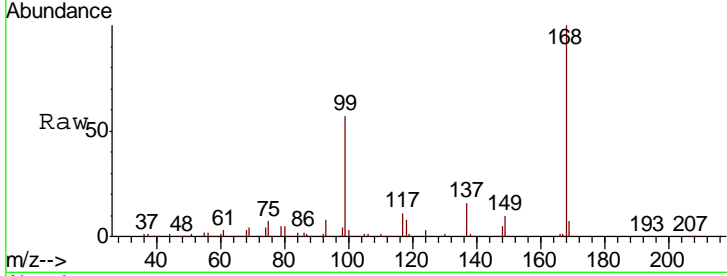




#38
 Carbon Tetrachloride
 Concen: 5.856 ug/l
 RT: 5.63 min Scan# 746
 Delta R.T. -0.12 min
 Lab File: VX017184.D
 Acq: 06 Jul 2020 21:21

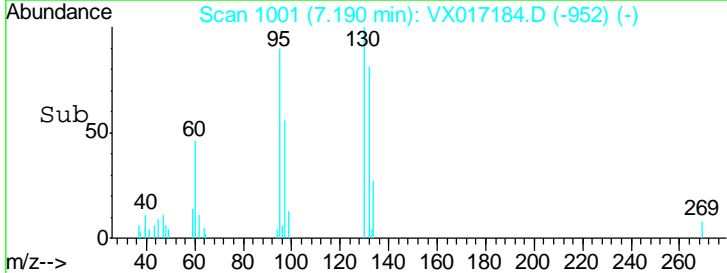
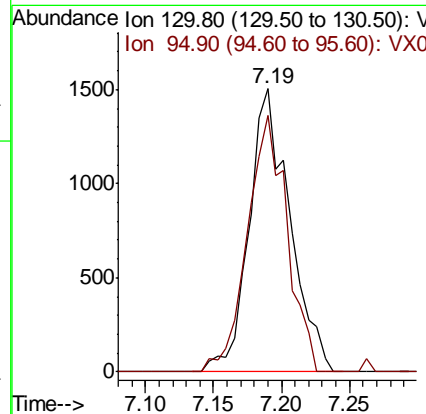
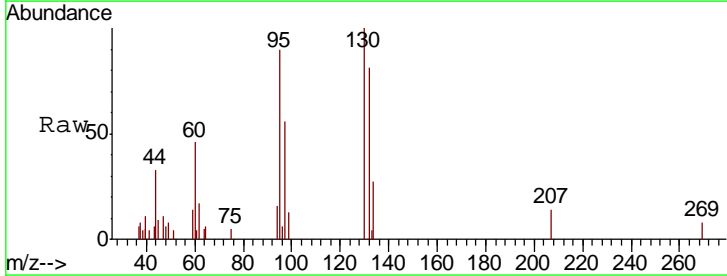
Instrument :
 MSVOA_X
 ClientSampled :
 51BR-20200629

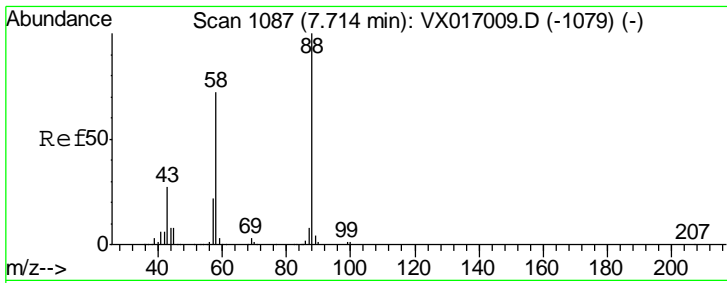
Tgt Ion	Resp	Lower	Upper
117	26150		
119	5.5	75.4	113.0#
121	0.0	23.8	35.6#



#44
 Trichloroethene
 Concen: 0.652 ug/l
 RT: 7.19 min Scan# 1001
 Delta R.T. 0.00 min
 Lab File: VX017184.D
 Acq: 06 Jul 2020 21:21

Tgt Ion	Resp	Lower	Upper
130	3149		
95	90.5	0.0	185.0

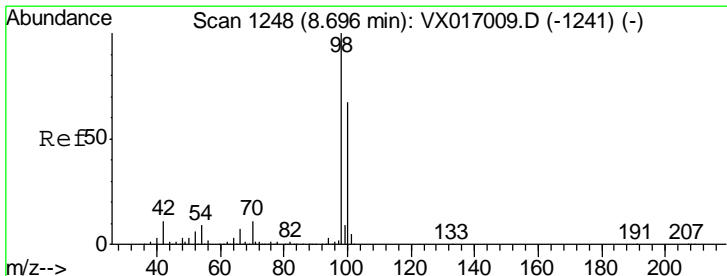
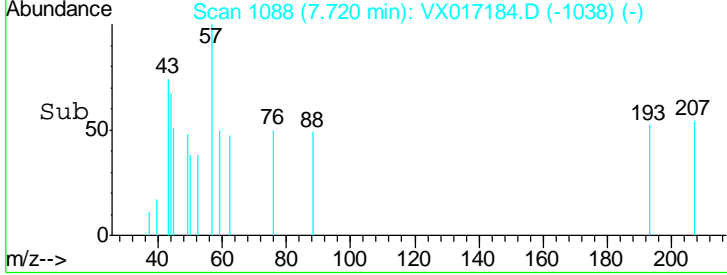
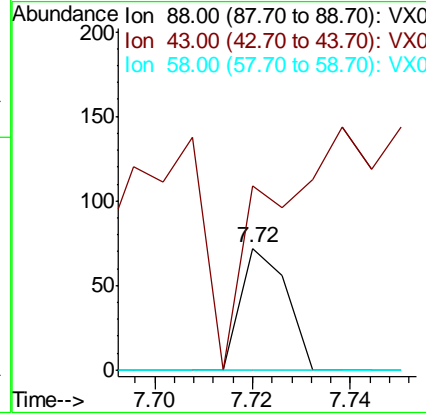
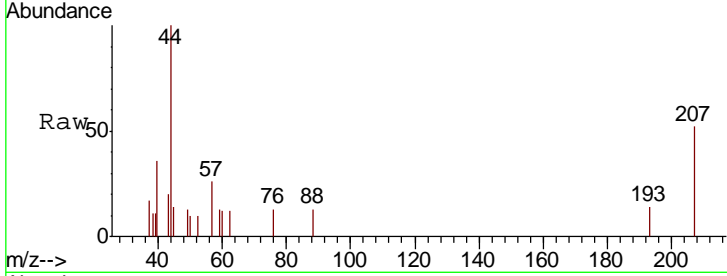




#49
 1,4-Dioxane
 Concen: 0.639 ug/l
 RT: 7.72 min Scan# 1088
 Delta R.T. 0.01 min
 Lab File: VX017184.D
 Acq: 06 Jul 2020 21:21

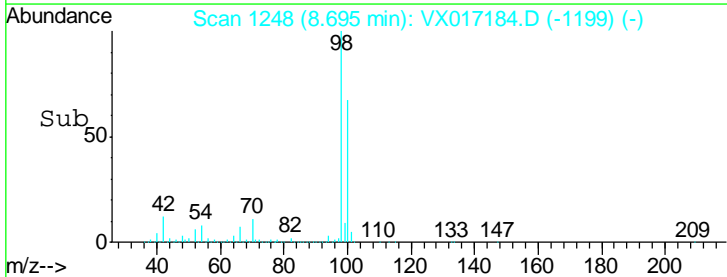
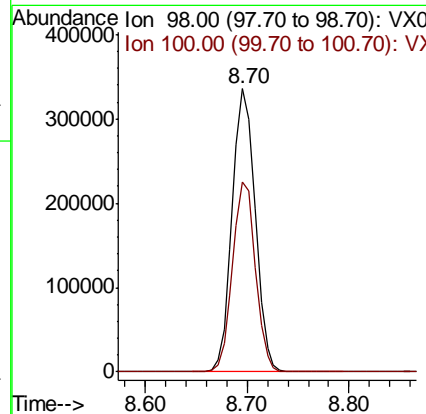
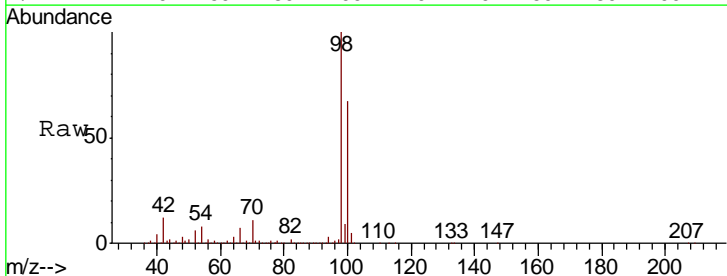
Instrument :
 MSVOA_X
 ClientSampled :
 51BR-20200629

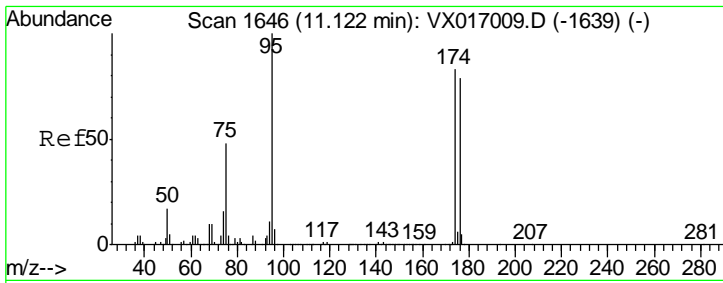
Tgt Ion	Resp	Lower	Upper
88	100		
43	287.2	25.8	38.8#
58	0.0	54.8	82.2#



#50
 Toluene-d8
 Concen: 52.428 ug/l
 RT: 8.70 min Scan# 1248
 Delta R.T. -0.00 min
 Lab File: VX017184.D
 Acq: 06 Jul 2020 21:21

Tgt Ion	Resp	Lower	Upper
98	100		
100	66.4	53.8	80.6

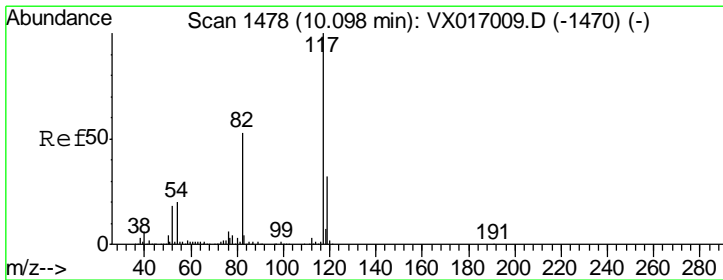
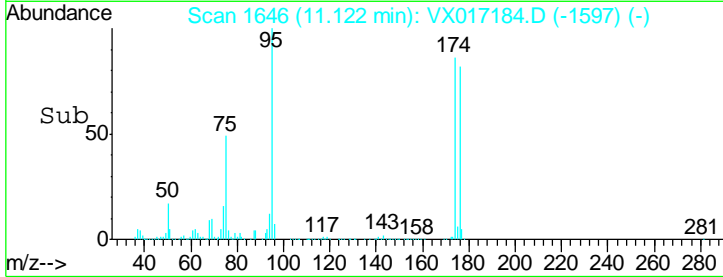
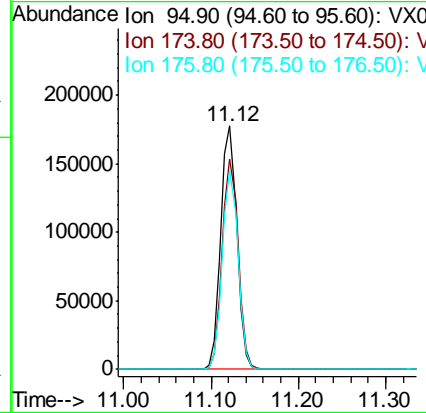
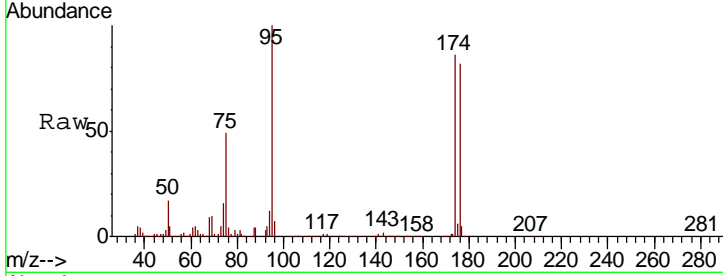




#62
 4-Bromofluorobenzene
 Concen: 57.232 ug/l
 RT: 11.12 min Scan# 1646
 Delta R.T. -0.00 min
 Lab File: VX017184.D
 Acq: 06 Jul 2020 21:21

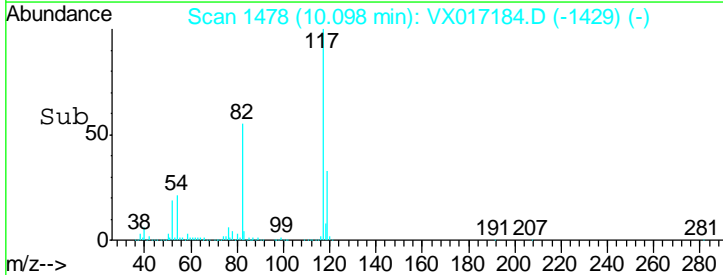
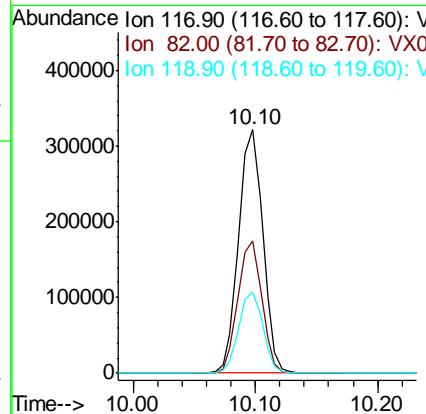
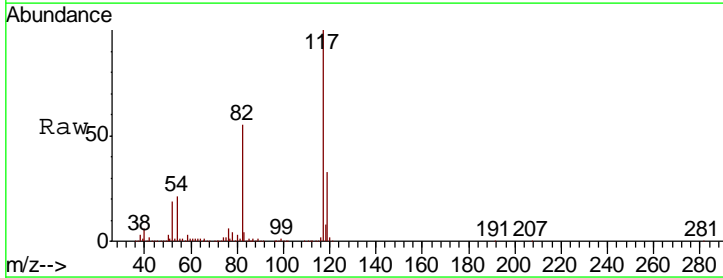
Instrument :
 MSVOA_X
 ClientSampleId :
 51BR-20200629

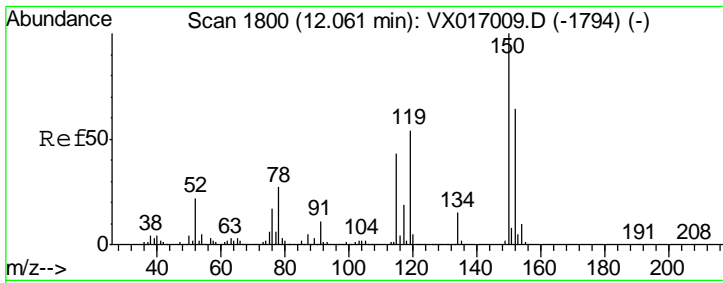
Tgt Ion	Resp	Lower	Upper
95	100		
174	86.5	0.0	164.0
176	80.0	0.0	157.6



#63
 Chlorobenzene-d5
 Concen: 50.000 ug/l
 RT: 10.10 min Scan# 1478
 Delta R.T. -0.00 min
 Lab File: VX017184.D
 Acq: 06 Jul 2020 21:21

Tgt Ion	Resp	Lower	Upper
117	100		
82	54.5	42.6	63.8
119	33.1	25.4	38.2

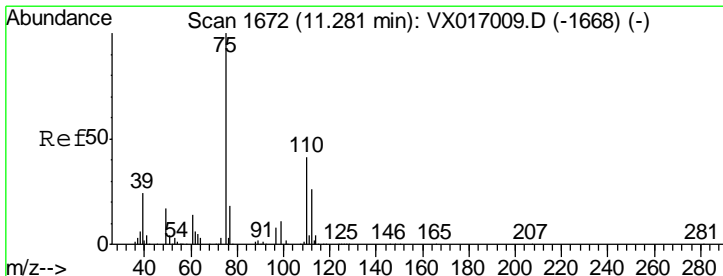
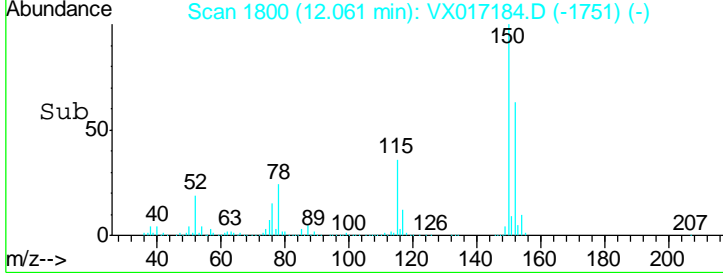
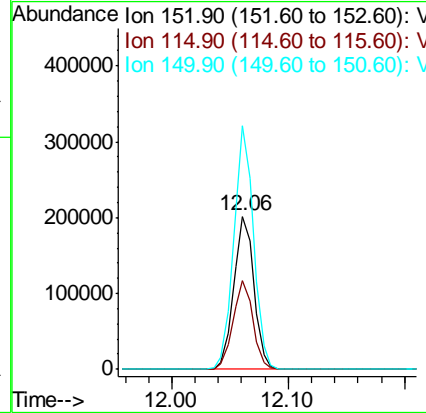
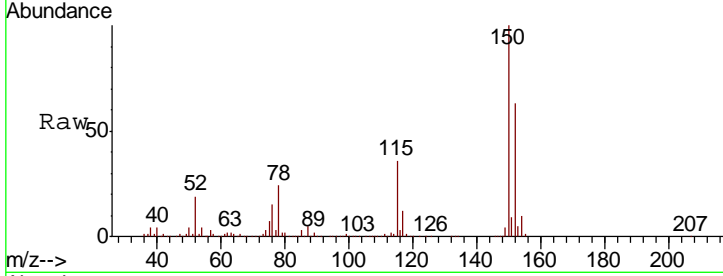




#72
 1,4-Dichlorobenzene-d4
 Concen: 50.000 ug/l
 RT: 12.06 min Scan# 1800
 Delta R.T. -0.00 min
 Lab File: VX017184.D
 Acq: 06 Jul 2020 21:21

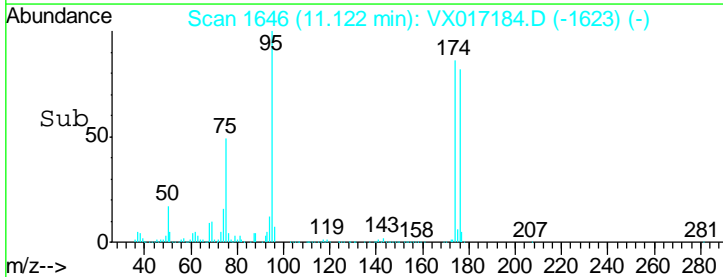
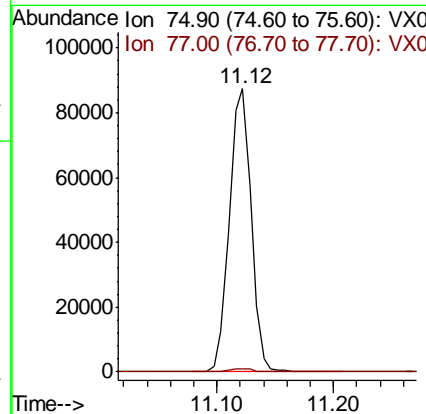
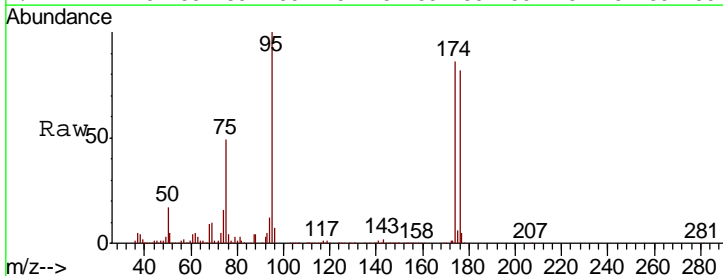
Instrument :
 MSVOA_X
 ClientSampled :
 51BR-20200629

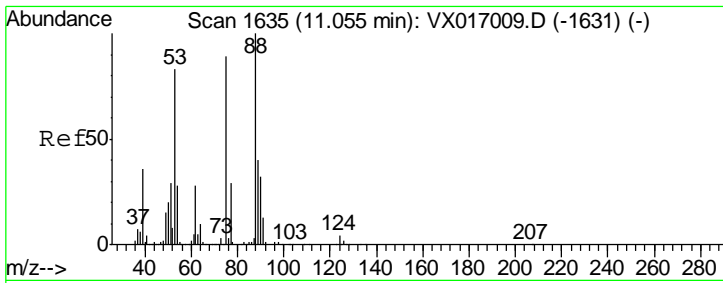
Tgt Ion	Resp	Lower	Upper
152	100		
115	57.3	40.9	122.7
150	156.0	0.0	351.6



#76
 1,2,3-Trichloropropane
 Concen: 23.663 ug/l
 RT: 11.12 min Scan# 1646
 Delta R.T. -0.16 min
 Lab File: VX017184.D
 Acq: 06 Jul 2020 21:21

Tgt Ion	Resp	Lower	Upper
75	100		
77	1.3	20.2	60.6#

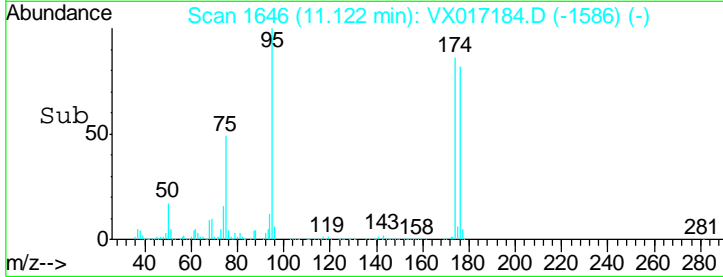
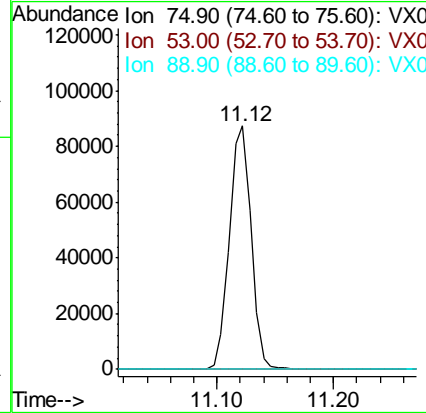
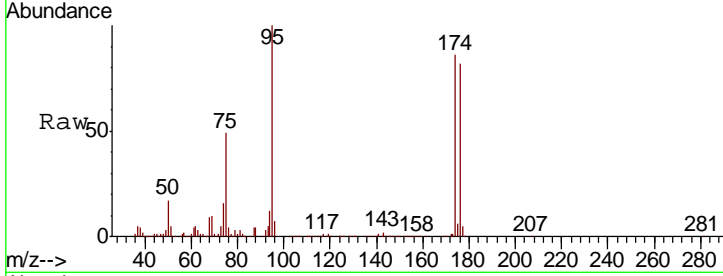




#81
 trans-1,4-Dichloro-2-butene
 Concen: 61.280 ug/l
 RT: 11.12 min Scan# 1646
 Delta R.T. 0.07 min
 Lab File: VX017184.D
 Acq: 06 Jul 2020 21:21

Instrument : MSVOA_X
 ClientSampleId : 51BR-20200629

Tgt Ion	Resp	Lower	Upper
75	100		
53	0.2	72.4	108.6#
89	0.0	37.0	55.4#



#94
 Hexachlorobutadiene
 Concen: 0.855 ug/l
 RT: 13.76 min Scan# 2078
 Delta R.T. -0.01 min
 Lab File: VX017184.D
 Acq: 06 Jul 2020 21:21

Tgt Ion	Resp	Lower	Upper
225	100		
223	281.0	32.5	97.5#
227	90.5	33.1	99.2

