

Data Path : Z:\voasrv\HPCHEM1\MSVOA_X\Data\VX070621\
 Data File : VX023144.D
 Acq On : 06 Jul 2021 14:32
 Operator : JC/MD
 Sample : M2923-05
 Misc : 5.0mL/MSVOA_X/WATER
 ALS Vial : 12 Sample Multiplier: 1

Instrument :
 MSVOA_X
 ClientSampleId :
 TB-01-070121

Integration Parameters: RTEINT.P
 Integrator: RTE
 Smoothing : ON Filtering: 5
 Sampling : 1 Min Area: 3 % of largest Peak
 Start Thrs: 0.2 Max Peaks: 100
 Stop Thrs : 0 Peak Location: TOP

If leading or trailing edge < 100 prefer < Baseline drop else tangent >
 Peak separation: 5

Method : Z:\voasrv\HPCHEM1\MSVOA_X\Method\82X070221W.M
 Title : SW846 8260

Signal : TIC: VX023144.D\data.ms

peak #	R.T. min	first scan	max scan	last scan	PK TY	peak height	corr. area	corr. % max.	% of total
1	1.252	24	27	33	rBV	78573	76420	5.55%	1.036%
2	2.544	231	239	248	rBV	19424	35782	2.60%	0.485%
3	2.953	298	306	315	rVB	8021	19027	1.38%	0.258%
4	4.587	564	574	587	rBV3	6939	25322	1.84%	0.343%
5	5.397	691	707	723	rBV2	158861	466433	33.85%	6.322%
6	5.562	723	734	747	rVB	286383	808530	58.67%	10.959%
7	5.964	786	800	813	rBV	179502	482330	35.00%	6.537%
8	6.769	920	932	948	rBV	442643	1035980	75.18%	14.041%
9	8.653	1234	1241	1253	rBV	880697	1378039	100.00%	18.678%
10	10.055	1465	1471	1483	rBV	847567	1175999	85.34%	15.939%
11	11.085	1634	1640	1648	rBV	715036	881467	63.97%	11.947%
12	12.024	1788	1794	1803	rBV	797838	992712	72.04%	13.455%

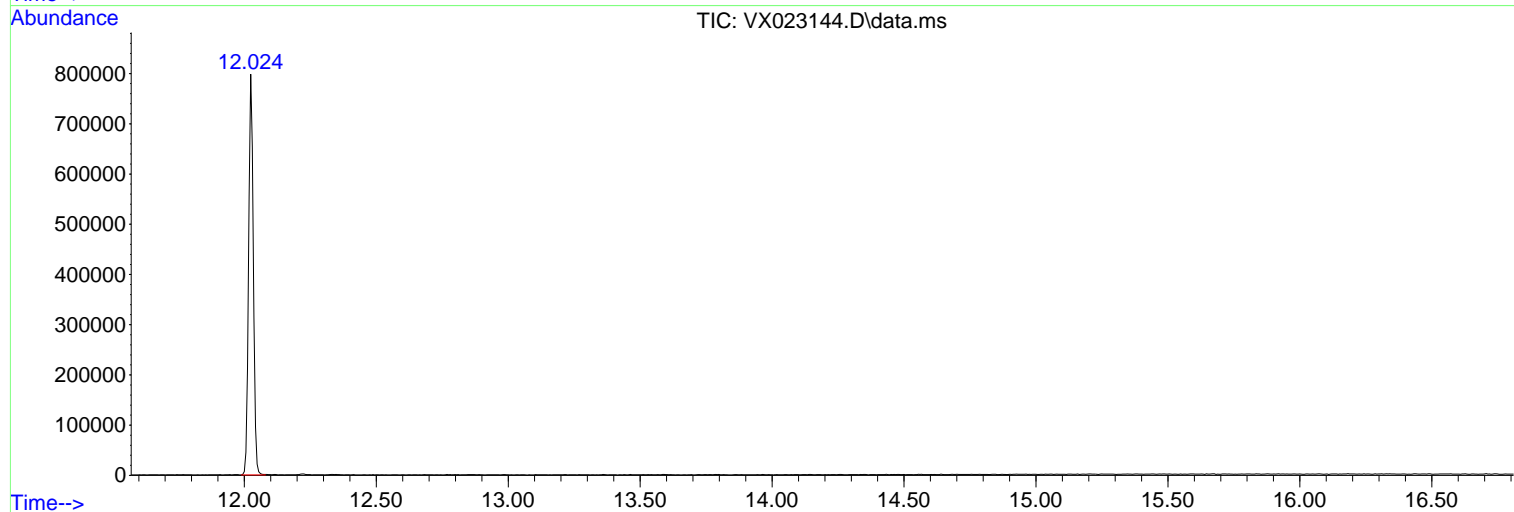
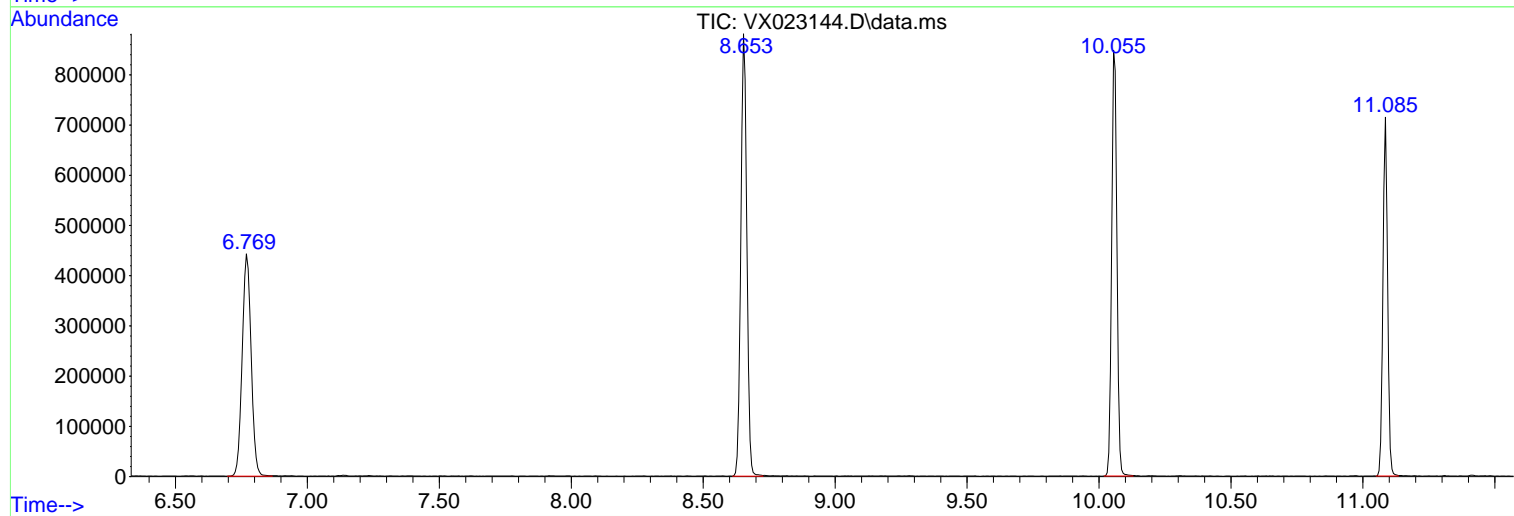
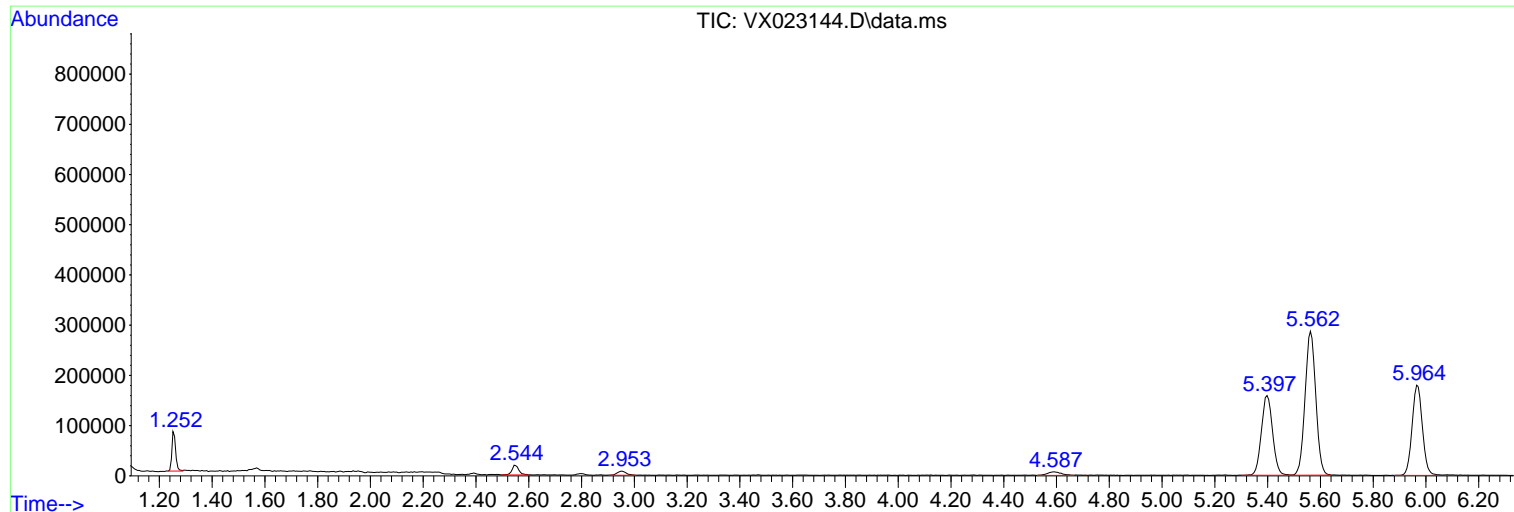
Sum of corrected areas: 7378041

Data Path : Z:\voasrv\HPCHEM1\MSVOA_X\Data\VX070621\
Data File : VX023144.D
Acq On : 06 Jul 2021 14:32
Operator : JC/MD
Sample : M2923-05
Misc : 5.0mL/MSVOA_X/WATER
ALS Vial : 12 Sample Multiplier: 1

Instrument :
MSVOA_X
ClientSampleId :
TB-01-070121

Quant Method : Z:\voasrv\HPCHEM1\MSVOA_X\Method\82X070221W.M
Quant Title : SW846 8260

TIC Library : C:\DATABASE\NIST11.L
TIC Integration Parameters: LSCINT.P



Library Search Compound Report

Data Path : Z:\voasrv\HPCHEM1\MSVOA_X\Data\VX070621\
Data File : VX023144.D
Acq On : 06 Jul 2021 14:32
Operator : JC/MD
Sample : M2923-05
Misc : 5.0mL/MSVOA_X/WATER
ALS Vial : 12 Sample Multiplier: 1

Instrument :
MSVOA_X
ClientSampleId :
TB-01-070121

Quant Method : Z:\voasrv\HPCHEM1\MSVOA_X\Method\82X070221W.M
Quant Title : SW846 8260

TIC Library : C:\DATABASE\NIST11.L
TIC Integration Parameters: LSCINT.P

No Library Search Compounds Detected

Data Path : Z:\voasrv\HPCHEM1\MSVOA_X\Data\VX070621\
Data File : VX023144.D
Acq On : 06 Jul 2021 14:32
Operator : JC/MD
Sample : M2923-05
Misc : 5.0mL/MSVOA_X/WATER
ALS Vial : 12 Sample Multiplier: 1

Instrument :
MSVOA_X
ClientSampleId :
TB-01-070121

Quant Method : Z:\voasrv\HPCHEM1\MSVOA_X\Method\82X070221W.M
Quant Title : SW846 8260

TIC Library : C:\DATABASE\NIST11.L
TIC Integration Parameters: LSCINT.P

TIC Top Hit name	RT	EstConc	Units	Response	--Internal Standard--		
					#	RT	Resp Conc
