

Data Path : Z:\voasrv\HPCHEM1\MSVOA_X\Data\VX070622\
 Data File : VX029940.D
 Acq On : 06 Jul 2022 13:44
 Operator : JC/MD
 Sample : N3591-04
 Misc : 5.0mL/MSVOA_X/WATER
 ALS Vial : 10 Sample Multiplier: 1

Instrument :
 MSVOA_X
 ClientSampleId :

Quant Time: Jul 07 02:35:10 2022
 Quant Method : Z:\voasrv\HPCHEM1\MSVOA_X\Method\82X062822W.M
 Quant Title : SW846 8260
 QLast Update : Wed Jun 29 05:54:51 2022
 Response via : Initial Calibration

Compound	R.T.	QIon	Response	Conc	Units	Dev(Min)

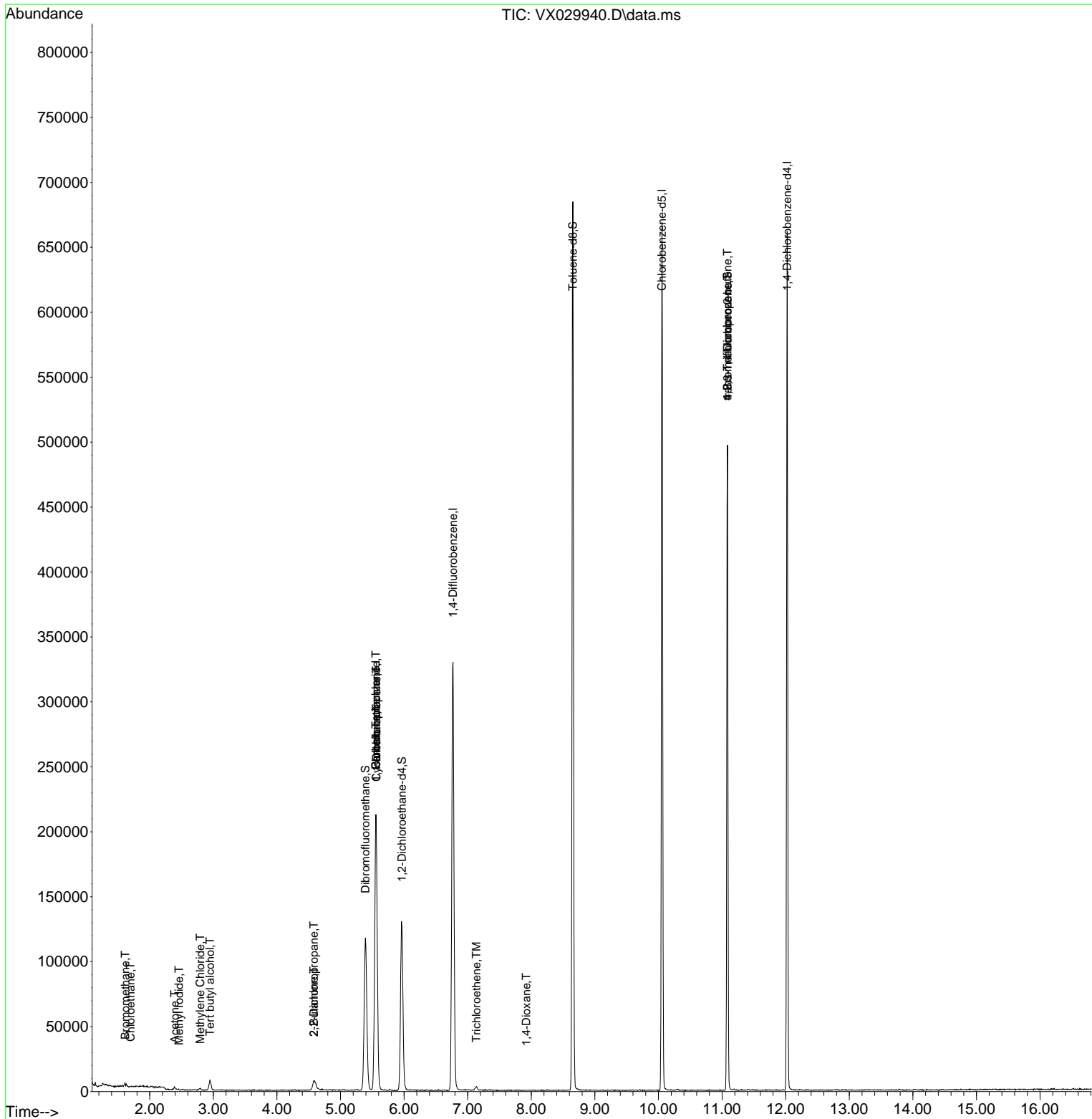
Internal Standards						
1) Pentafluorobenzene	5.556	168	210733	50.000	ug/l	0.00
34) 1,4-Difluorobenzene	6.769	114	360337	50.000	ug/l	0.00
63) Chlorobenzene-d5	10.055	117	313134	50.000	ug/l	0.00
72) 1,4-Dichlorobenzene-d4	12.024	152	132704	50.000	ug/l	0.00
System Monitoring Compounds						
33) 1,2-Dichloroethane-d4	5.964	65	113981	42.729	ug/l	0.00
Spiked Amount	50.000	Range 74 - 125	Recovery	=	85.460%	
35) Dibromofluoromethane	5.391	113	104481	46.396	ug/l	0.00
Spiked Amount	50.000	Range 75 - 124	Recovery	=	92.800%	
50) Toluene-d8	8.653	98	415141	49.141	ug/l	0.00
Spiked Amount	50.000	Range 86 - 113	Recovery	=	98.280%	
62) 4-Bromofluorobenzene	11.085	95	136821	45.817	ug/l	0.00
Spiked Amount	50.000	Range 83 - 123	Recovery	=	91.640%	
Target Compounds						
						Qvalue
5) Bromomethane	1.617	94	380	0.293	ug/l #	38
6) Chloroethane	1.697	64	182	1.140	ug/l #	41
10) Methyl Iodide	2.459	142	259	1.959	ug/l #	73
11) Tert butyl alcohol	2.946	59	4523	6.483	ug/l #	74
13) Acrolein	2.197	56	44	Below Cal	#	1
16) Acetone	2.392	43	2225	1.705	ug/l	95
20) Methylene Chloride	2.794	84	609	0.221	ug/l #	92
25) 2-Butanone	4.580	43	659	0.291	ug/l #	48
26) 2,2-Dichloropropane	4.580	77	720	0.257	ug/l #	49
31) Cyclohexane	5.562	56	4150	1.116	ug/l #	1
36) 1,1-Dichloropropene	5.562	75	15008	5.011	ug/l #	47
38) Carbon Tetrachloride	5.556	117	19270	7.425	ug/l #	18
44) Trichloroethene	7.135	130	917	0.352	ug/l	65
49) 1,4-Dioxane	7.921	88	24	0.347	ug/l #	25
76) 1,2,3-Trichloropropane	11.085	75	63015	19.836	ug/l #	38
81) trans-1,4-Dichloro-2-b...	11.085	75	63015	62.995	ug/l #	12

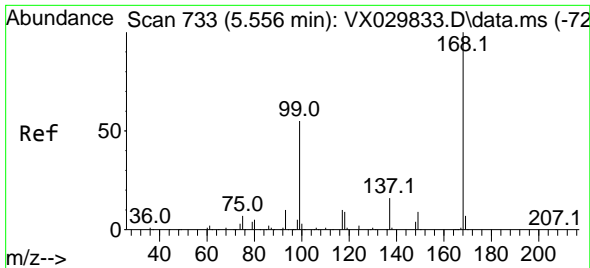
(#) = qualifier out of range (m) = manual integration (+) = signals summed

Data Path : Z:\voasrv\HPCHEM1\MSVOA_X\Data\VX070622\
 Data File : VX029940.D
 Acq On : 06 Jul 2022 13:44
 Operator : JC/MD
 Sample : N3591-04
 Misc : 5.0mL/MSVOA_X/WATER
 ALS Vial : 10 Sample Multiplier: 1

Instrument :
 MSVOA_X
 ClientSampleId :

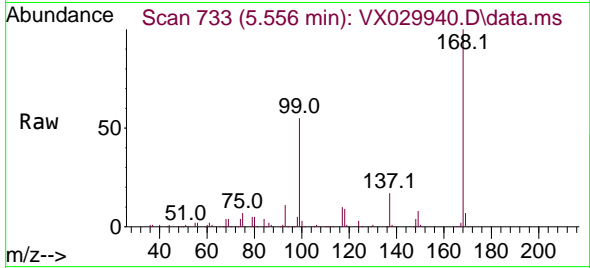
Quant Time: Jul 07 02:35:10 2022
 Quant Method : Z:\voasrv\HPCHEM1\MSVOA_X\Method\82X062822W.M
 Quant Title : SW846 8260
 QLast Update : Wed Jun 29 05:54:51 2022
 Response via : Initial Calibration



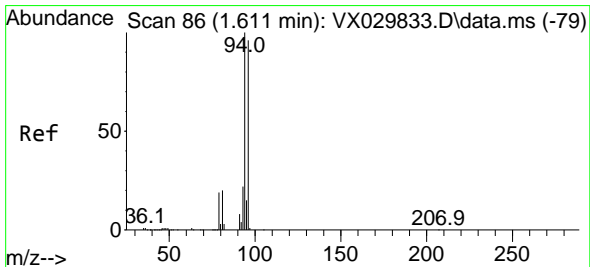
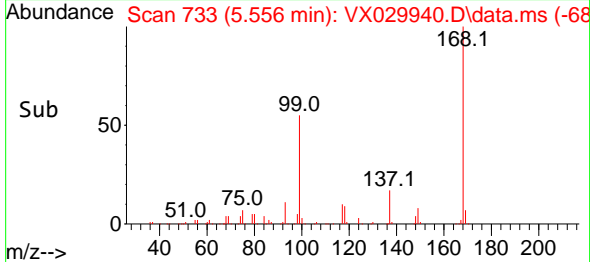
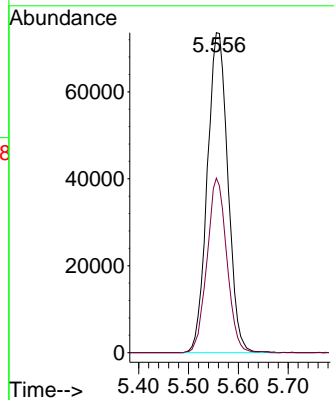


#1
 Pentafluorobenzene
 Concen: 50.000 ug/l
 RT: 5.556 min Scan# 71
 Delta R.T. -0.000 min
 Lab File: VX029940.D
 Acq: 06 Jul 2022 13:44

Instrument :
 MSVOA_X
 ClientSampleId :

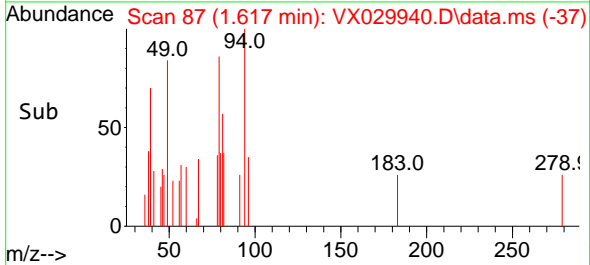
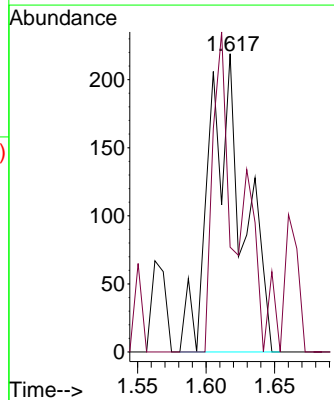
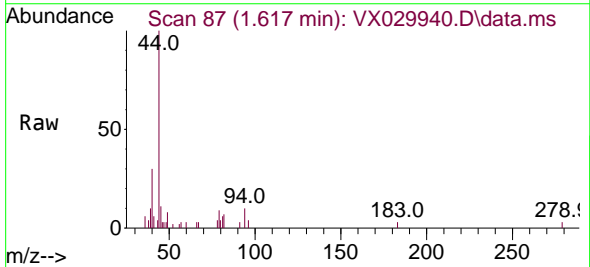


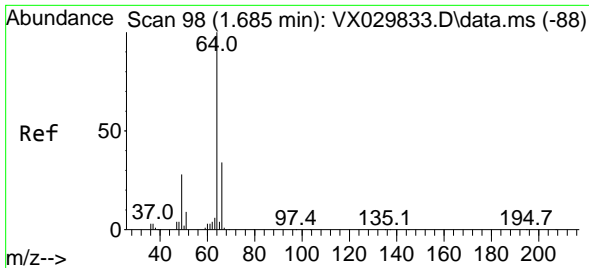
Tgt Ion:168 Resp: 210733
 Ion Ratio Lower Upper
 168 100
 99 54.5 44.0 66.0



#5
 Bromomethane
 Concen: 0.293 ug/l
 RT: 1.617 min Scan# 87
 Delta R.T. 0.006 min
 Lab File: VX029940.D
 Acq: 06 Jul 2022 13:44

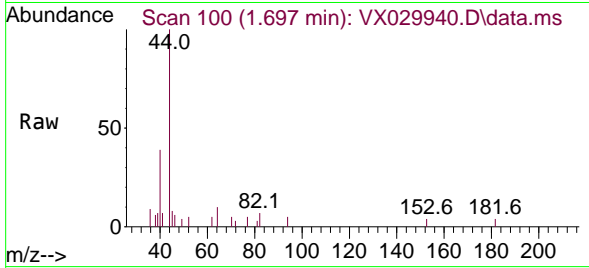
Tgt Ion: 94 Resp: 380
 Ion Ratio Lower Upper
 94 100
 96 35.2 76.9 115.3#



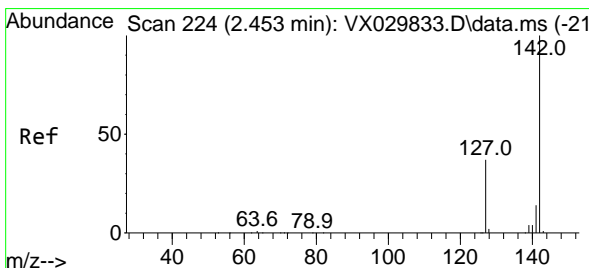
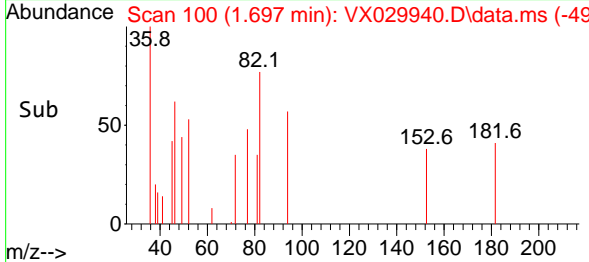
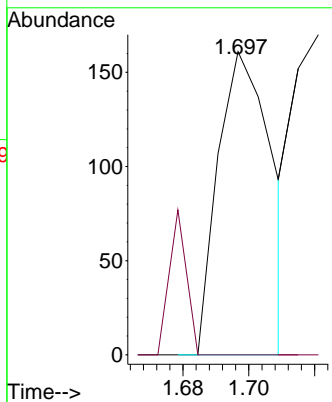


#6
 Chloroethane
 Concen: 1.140 ug/l
 RT: 1.697 min Scan# 10
 Delta R.T. 0.012 min
 Lab File: VX029940.D
 Acq: 06 Jul 2022 13:44

Instrument : MSVOA_X
 ClientSampleId :

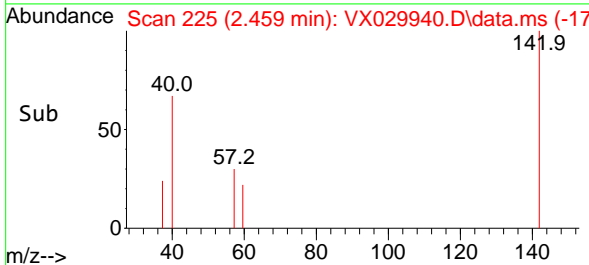
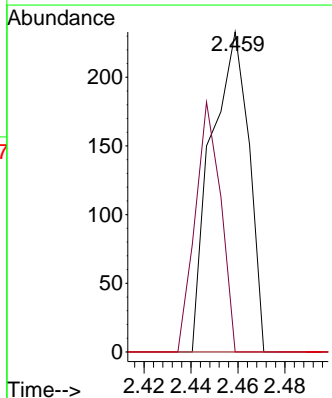
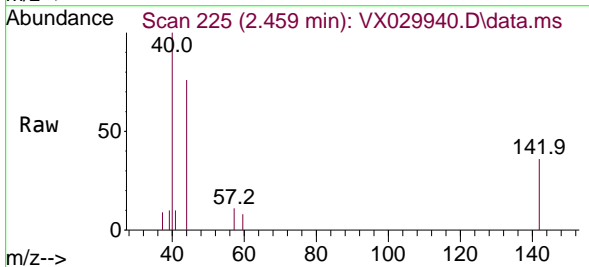


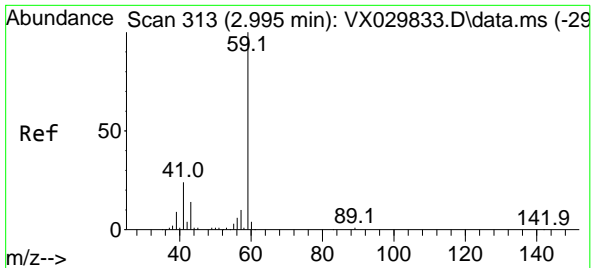
Tgt Ion: 64 Resp: 182
 Ion Ratio Lower Upper
 64 100
 66 0.0 27.2 40.8#



#10
 Methyl Iodide
 Concen: 1.959 ug/l
 RT: 2.459 min Scan# 225
 Delta R.T. 0.006 min
 Lab File: VX029940.D
 Acq: 06 Jul 2022 13:44

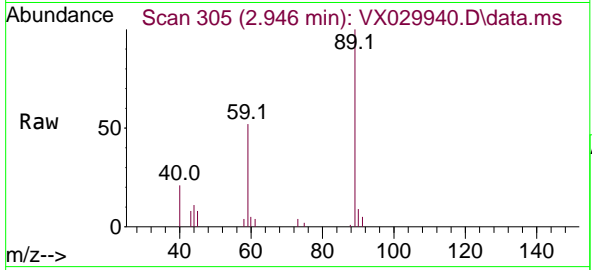
Tgt Ion: 142 Resp: 259
 Ion Ratio Lower Upper
 142 100
 127 52.5 30.2 45.2#
 141 0.0 11.3 16.9#



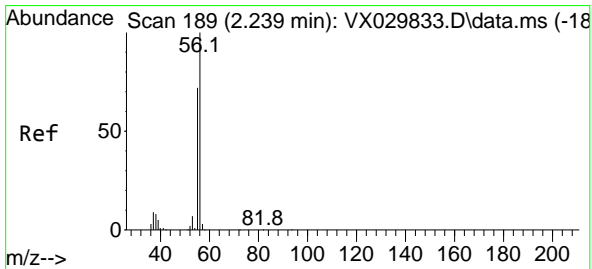
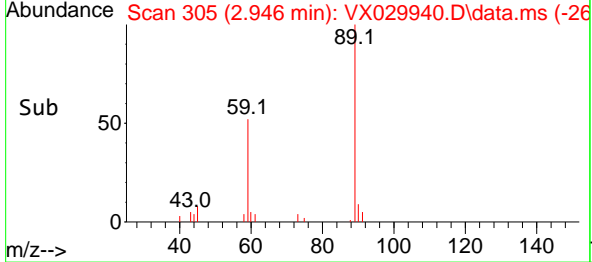
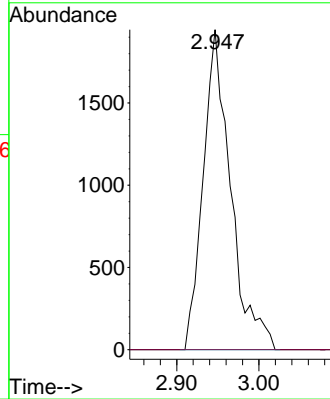


#11
 Tert butyl alcohol
 Concen: 6.483 ug/l
 RT: 2.946 min Scan# 305
 Delta R.T. -0.049 min
 Lab File: VX029940.D
 Acq: 06 Jul 2022 13:44

Instrument : MSVOA_X
 ClientSampleId :

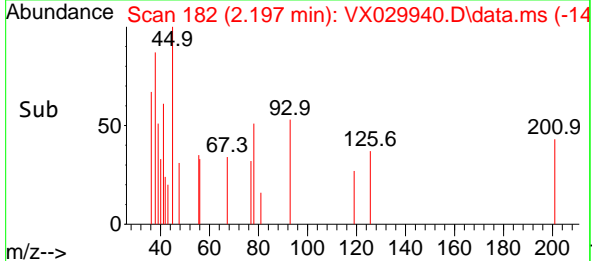
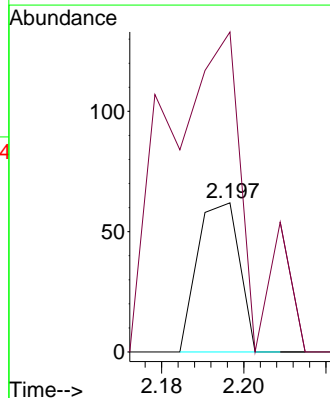
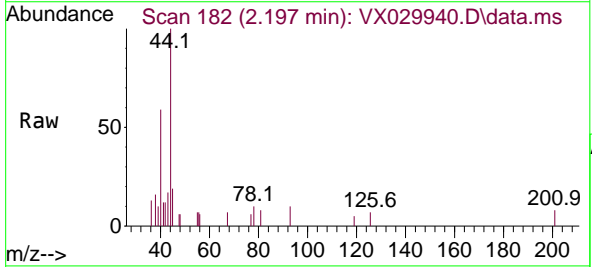


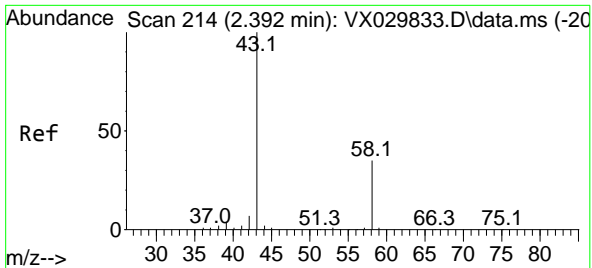
Tgt Ion: 59 Resp: 4523
 Ion Ratio Lower Upper
 59 100
 57 0.0 7.4 11.2#



#13
 Acrolein
 Concen: Below Cal
 RT: 2.197 min Scan# 182
 Delta R.T. -0.042 min
 Lab File: VX029940.D
 Acq: 06 Jul 2022 13:44

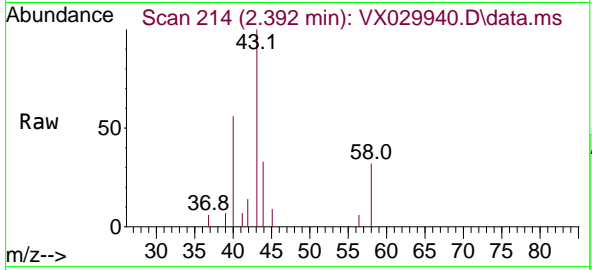
Tgt Ion: 56 Resp: 44
 Ion Ratio Lower Upper
 56 100
 55 411.4 56.6 84.8#



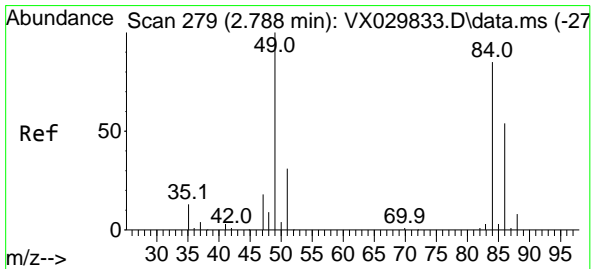
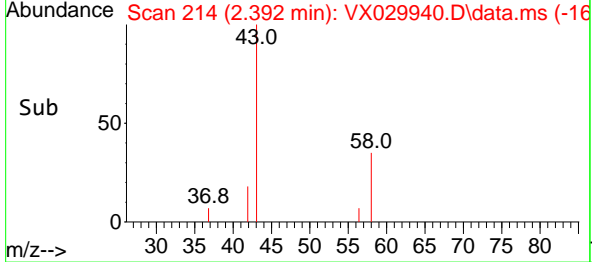
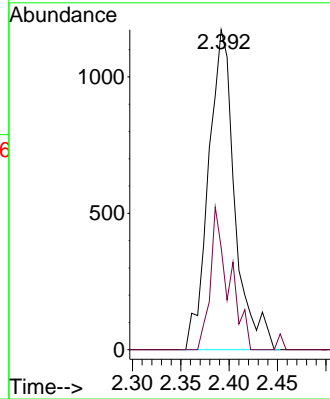


#16
 Acetone
 Concen: 1.705 ug/l
 RT: 2.392 min Scan# 216
 Delta R.T. 0.000 min
 Lab File: VX029940.D
 Acq: 06 Jul 2022 13:44

Instrument : MSVOA_X
 ClientSampleId :

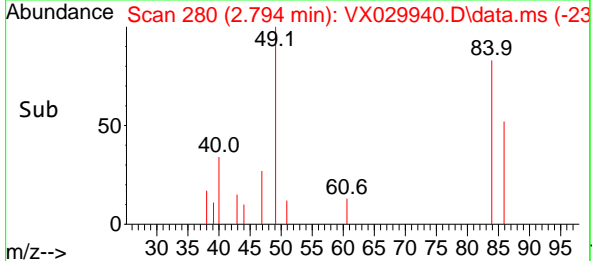
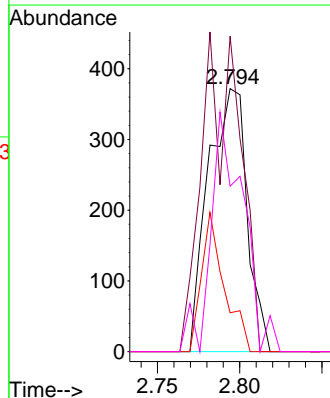
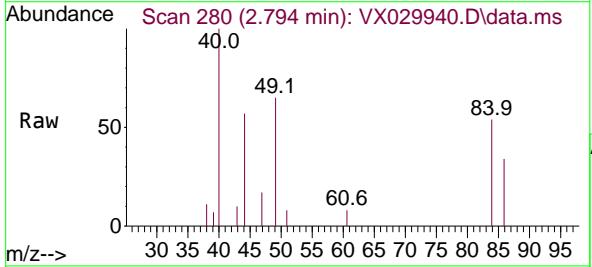


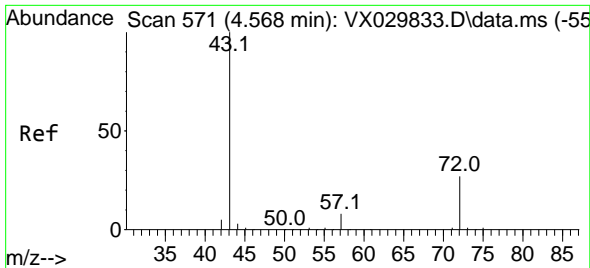
Tgt Ion: 43 Resp: 2225
 Ion Ratio Lower Upper
 43 100
 58 32.0 27.7 41.5



#20
 Methylene Chloride
 Concen: 0.221 ug/l
 RT: 2.794 min Scan# 280
 Delta R.T. 0.006 min
 Lab File: VX029940.D
 Acq: 06 Jul 2022 13:44

Tgt Ion: 84 Resp: 609
 Ion Ratio Lower Upper
 84 100
 49 119.9 93.8 140.6
 51 14.8 29.4 44.0#
 86 62.9 51.0 76.4

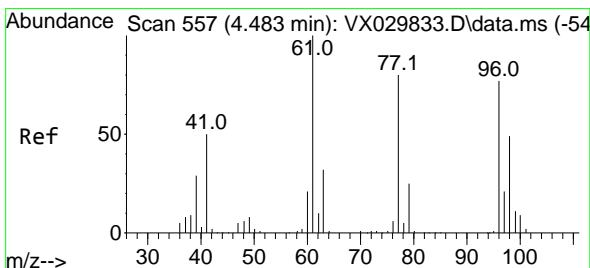
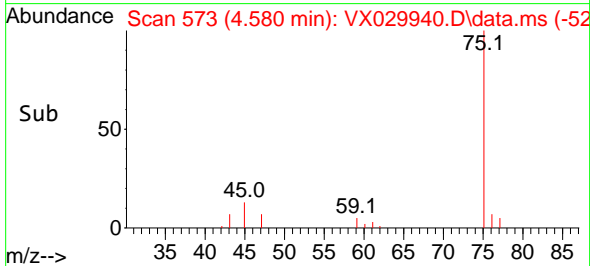
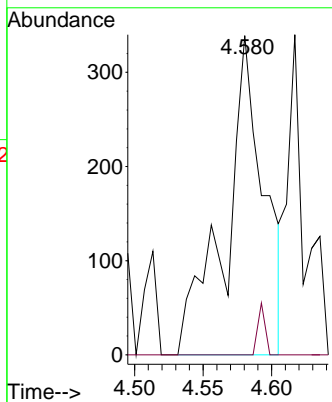
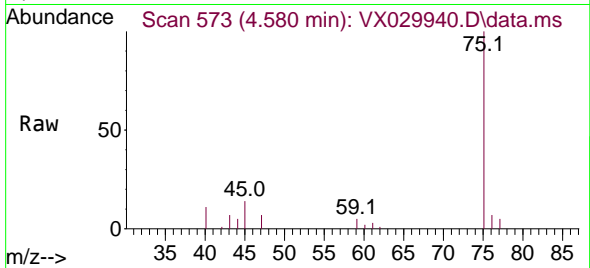




#25
 2-Butanone
 Concen: 0.291 ug/l
 RT: 4.580 min Scan# 573
 Delta R.T. 0.012 min
 Lab File: VX029940.D
 Acq: 06 Jul 2022 13:44

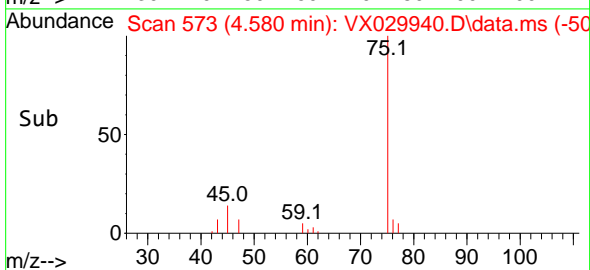
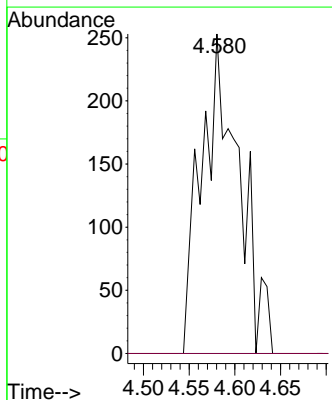
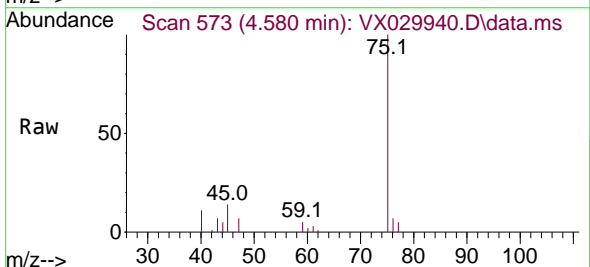
Instrument : MSVOA_X
 ClientSampleId :

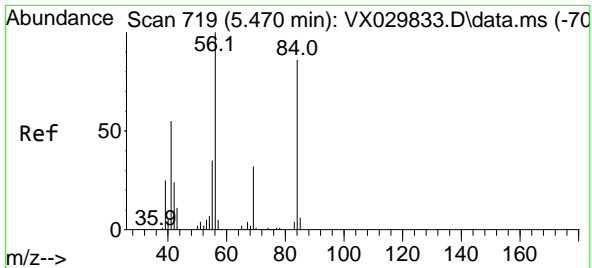
Tgt Ion: 43 Resp: 659
 Ion Ratio Lower Upper
 43 100
 72 0.0 21.7 32.5#



#26
 2,2-Dichloropropane
 Concen: 0.257 ug/l
 RT: 4.580 min Scan# 573
 Delta R.T. 0.098 min
 Lab File: VX029940.D
 Acq: 06 Jul 2022 13:44

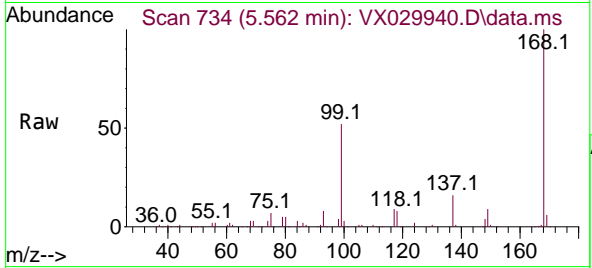
Tgt Ion: 77 Resp: 720
 Ion Ratio Lower Upper
 77 100
 97 0.0 13.0 39.0#



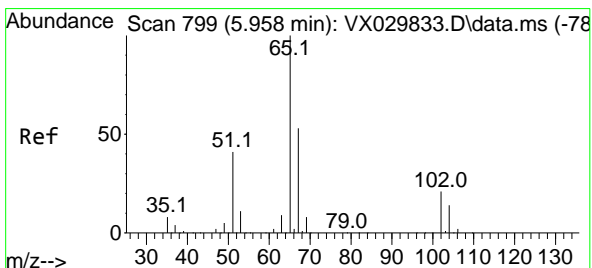
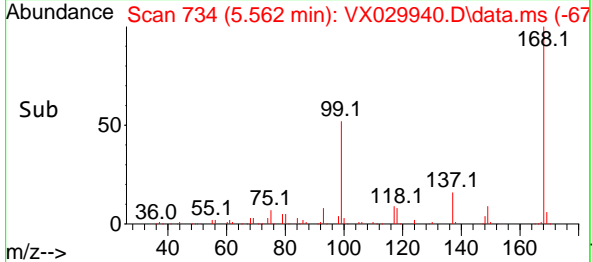
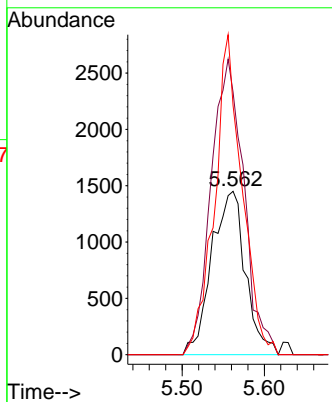


#31
 Cyclohexane
 Concen: 1.116 ug/l
 RT: 5.562 min Scan# 719
 Delta R.T. 0.091 min
 Lab File: VX029940.D
 Acq: 06 Jul 2022 13:44

Instrument : MSVOA_X
 ClientSampleId :

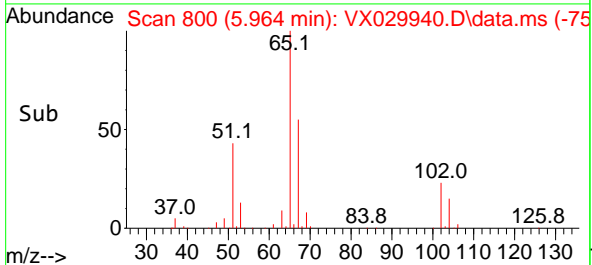
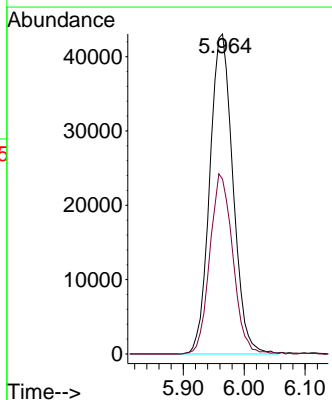
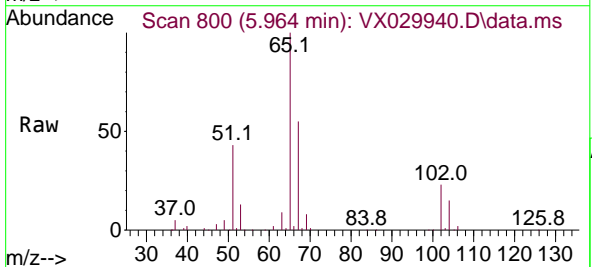


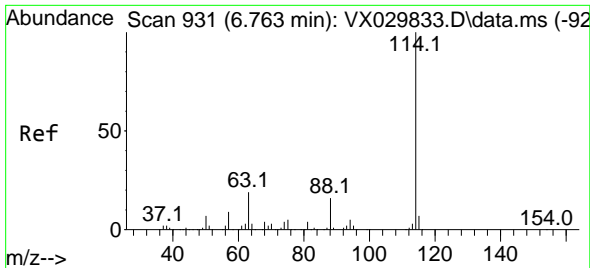
Tgt Ion: 56 Resp: 4150
 Ion Ratio Lower Upper
 56 100
 69 160.5 25.4 38.0#
 84 152.4 68.9 103.3#



#33
 1,2-Dichloroethane-d4
 Concen: 42.729 ug/l
 RT: 5.964 min Scan# 800
 Delta R.T. 0.006 min
 Lab File: VX029940.D
 Acq: 06 Jul 2022 13:44

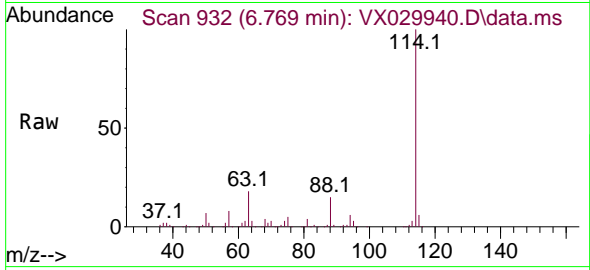
Tgt Ion: 65 Resp: 113981
 Ion Ratio Lower Upper
 65 100
 67 55.7 0.0 109.6



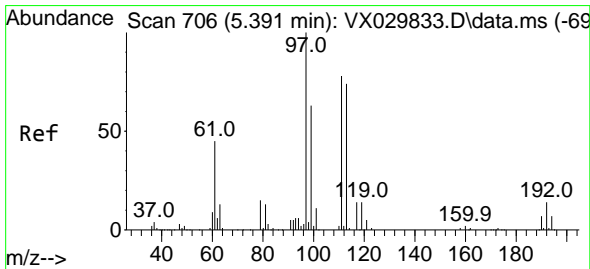
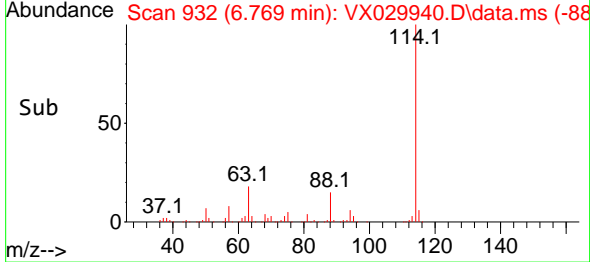
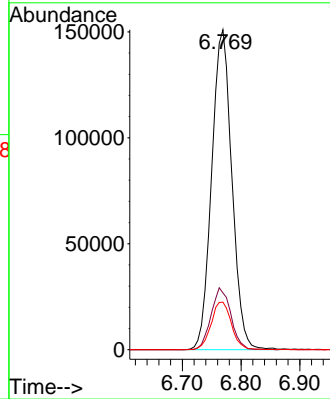


#34
 1,4-Difluorobenzene
 Concen: 50.000 ug/l
 RT: 6.769 min Scan# 911
 Delta R.T. 0.006 min
 Lab File: VX029940.D
 Acq: 06 Jul 2022 13:44

Instrument :
 MSVOA_X
 ClientSampleId :

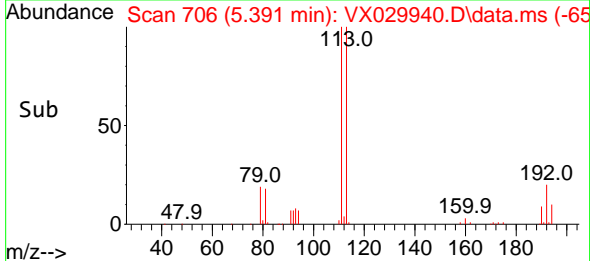
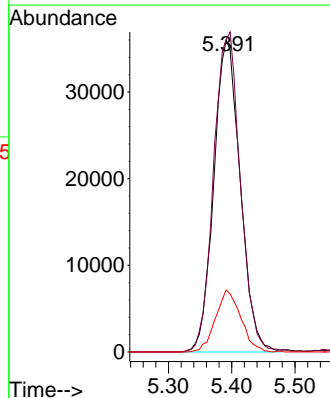
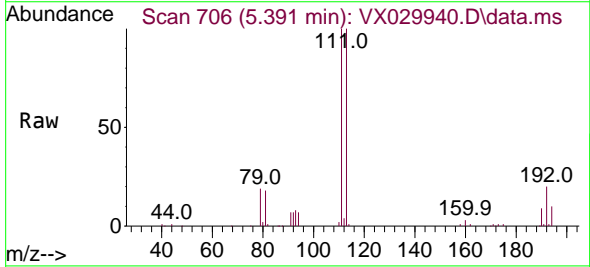


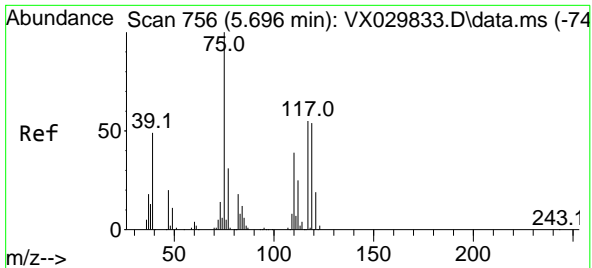
Tgt Ion:114 Resp: 360337
 Ion Ratio Lower Upper
 114 100
 63 17.7 0.0 38.4
 88 14.9 0.0 31.8



#35
 Dibromofluoromethane
 Concen: 46.396 ug/l
 RT: 5.391 min Scan# 706
 Delta R.T. -0.000 min
 Lab File: VX029940.D
 Acq: 06 Jul 2022 13:44

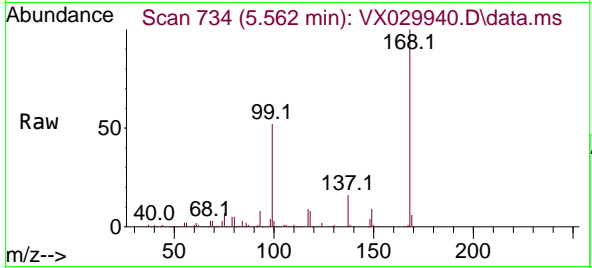
Tgt Ion:113 Resp: 104481
 Ion Ratio Lower Upper
 113 100
 111 103.5 83.2 124.8
 192 18.9 14.8 22.2



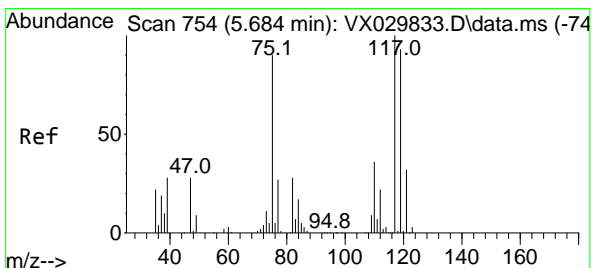
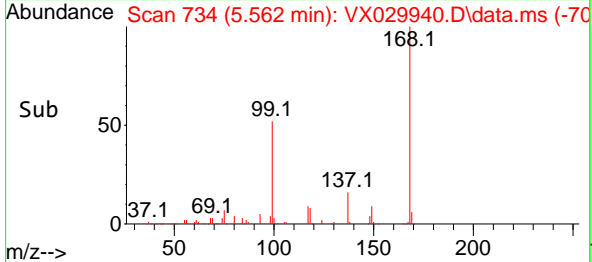
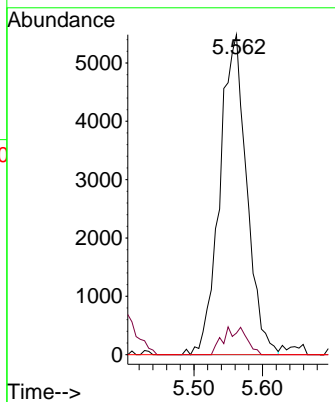


#36
 1,1-Dichloropropene
 Concen: 5.011 ug/l
 RT: 5.562 min Scan# 734
 Delta R.T. -0.134 min
 Lab File: VX029940.D
 Acq: 06 Jul 2022 13:44

Instrument : MSVOA_X
 ClientSampleId :

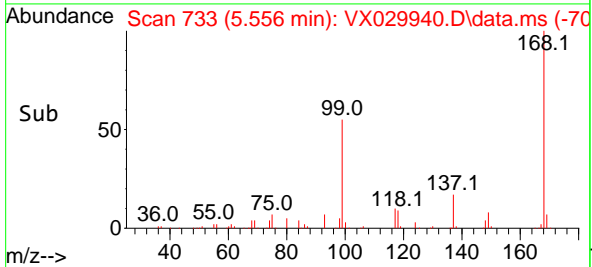
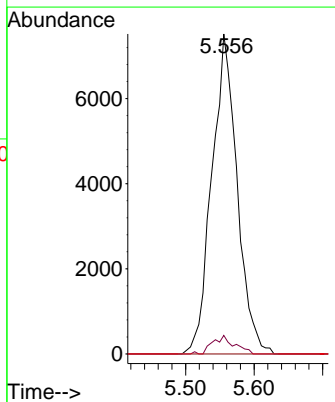
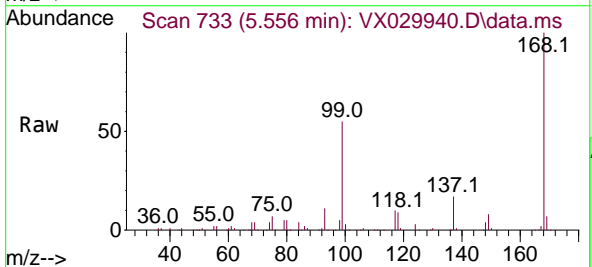


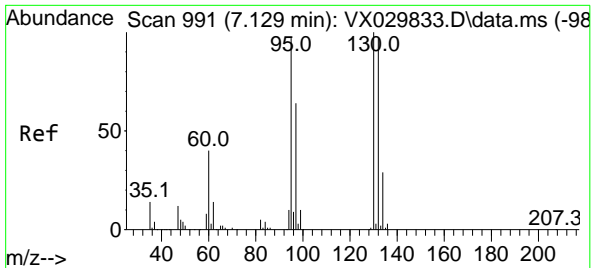
Tgt Ion: 75 Resp: 15008
 Ion Ratio Lower Upper
 75 100
 110 7.3 19.3 57.9#
 77 0.0 24.4 36.6#



#38
 Carbon Tetrachloride
 Concen: 7.425 ug/l
 RT: 5.556 min Scan# 733
 Delta R.T. -0.128 min
 Lab File: VX029940.D
 Acq: 06 Jul 2022 13:44

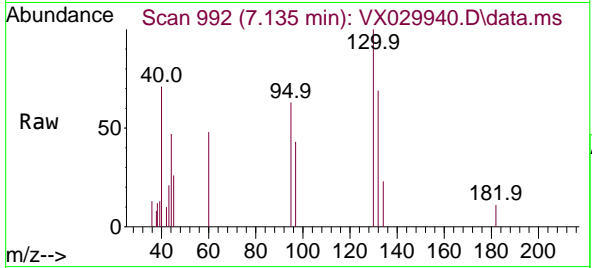
Tgt Ion: 117 Resp: 19270
 Ion Ratio Lower Upper
 117 100
 119 5.8 74.1 111.1#
 121 0.0 25.8 38.8#



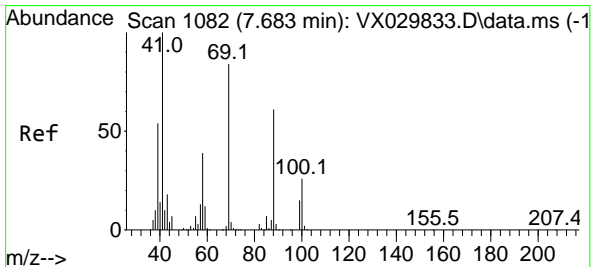
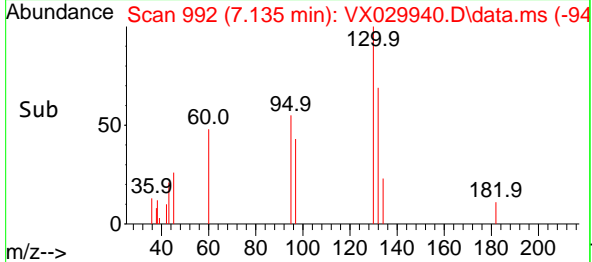
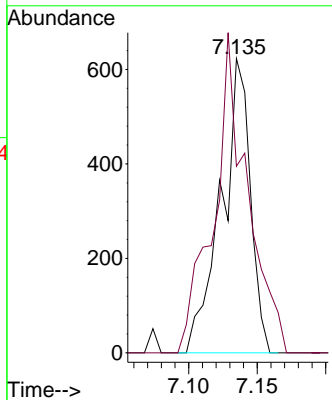


#44
 Trichloroethene
 Concen: 0.352 ug/l
 RT: 7.135 min Scan# 94
 Delta R.T. 0.006 min
 Lab File: VX029940.D
 Acq: 06 Jul 2022 13:44

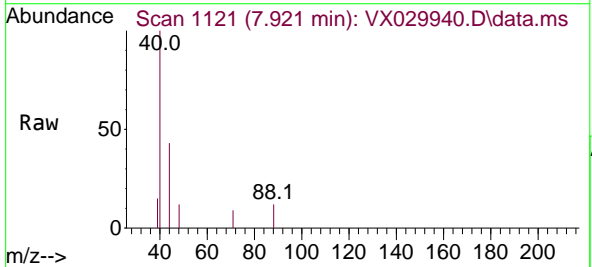
Instrument :
 MSVOA_X
 ClientSampleId :



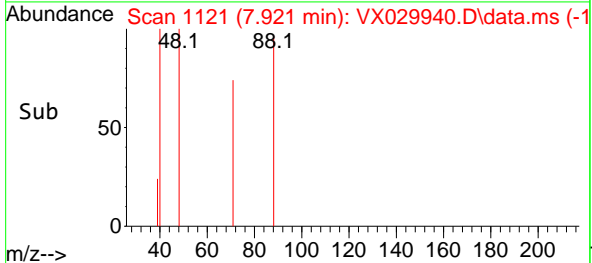
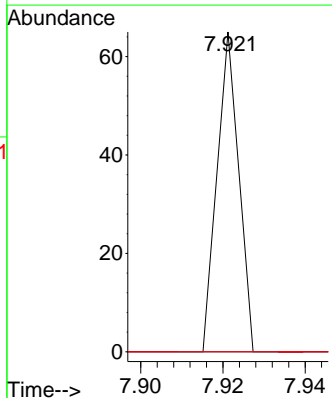
Tgt Ion:130 Resp: 917
 Ion Ratio Lower Upper
 130 100
 95 63.4 0.0 194.8

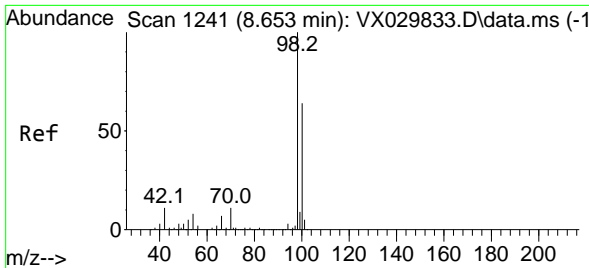


#49
 1,4-Dioxane
 Concen: 0.347 ug/l
 RT: 7.921 min Scan# 1121
 Delta R.T. 0.238 min
 Lab File: VX029940.D
 Acq: 06 Jul 2022 13:44



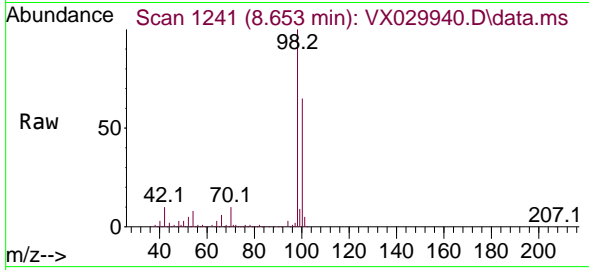
Tgt Ion: 88 Resp: 24
 Ion Ratio Lower Upper
 88 100
 43 0.0 23.8 35.8#
 58 0.0 53.8 80.6#



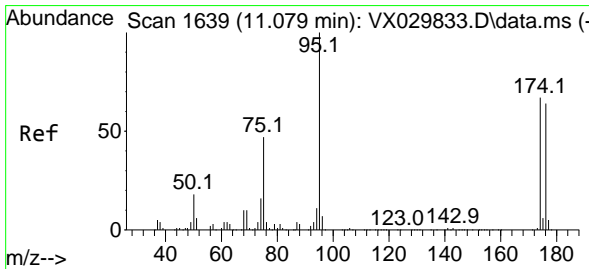
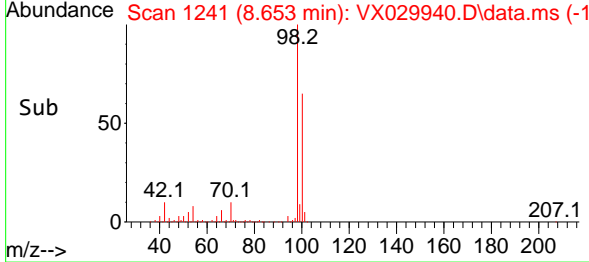
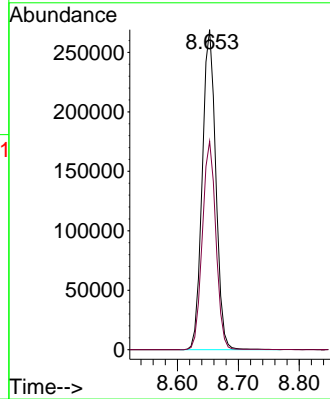


#50
 Toluene-d8
 Concen: 49.141 ug/l
 RT: 8.653 min Scan# 11
 Delta R.T. 0.000 min
 Lab File: VX029940.D
 Acq: 06 Jul 2022 13:44

Instrument :
 MSVOA_X
 ClientSampleId :

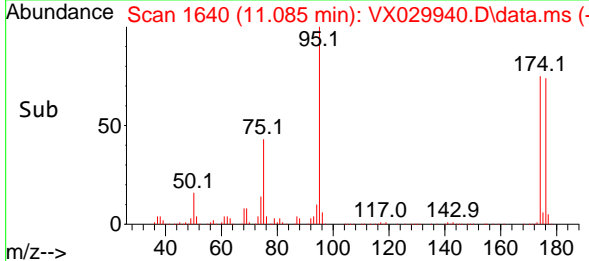
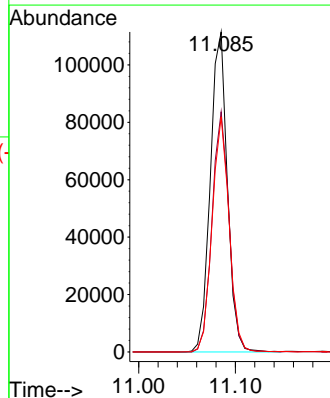
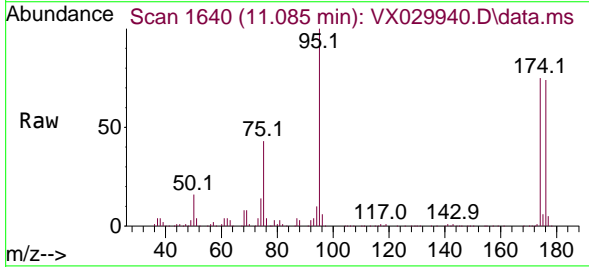


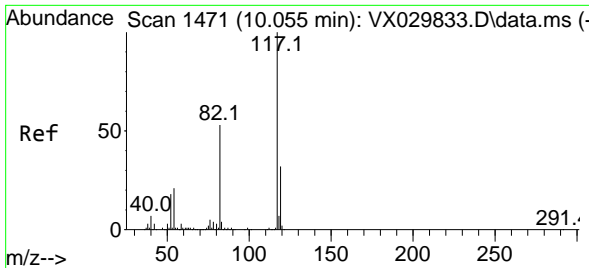
Tgt Ion: 98 Resp: 415141
 Ion Ratio Lower Upper
 98 100
 100 65.2 52.3 78.5



#62
 4-Bromofluorobenzene
 Concen: 45.817 ug/l
 RT: 11.085 min Scan# 1640
 Delta R.T. 0.006 min
 Lab File: VX029940.D
 Acq: 06 Jul 2022 13:44

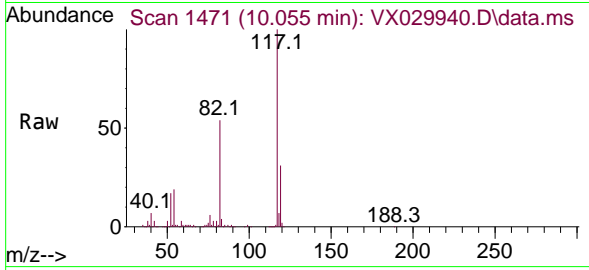
Tgt Ion: 95 Resp: 136821
 Ion Ratio Lower Upper
 95 100
 174 74.6 0.0 149.0
 176 73.3 0.0 146.0



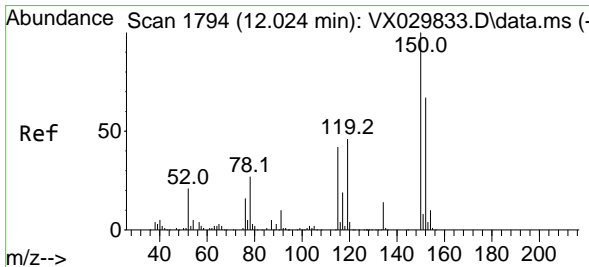
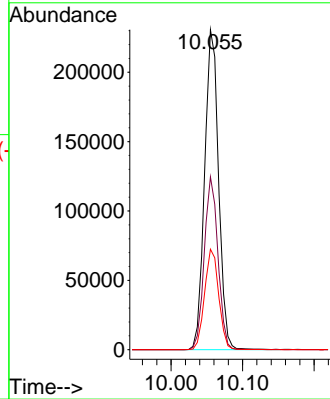
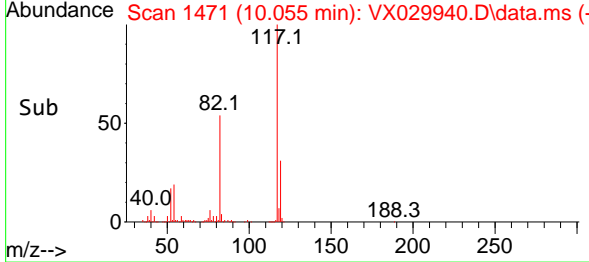


#63
 Chlorobenzene-d5
 Concen: 50.000 ug/l
 RT: 10.055 min Scan# 1471
 Delta R.T. -0.000 min
 Lab File: VX029940.D
 Acq: 06 Jul 2022 13:44

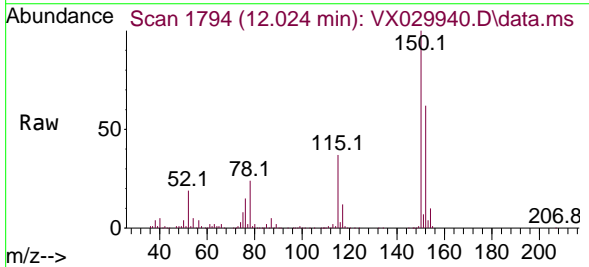
Instrument : MSVOA_X
 ClientSampleId :



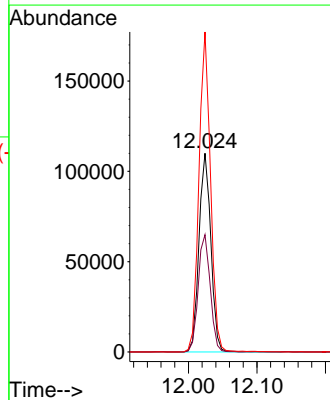
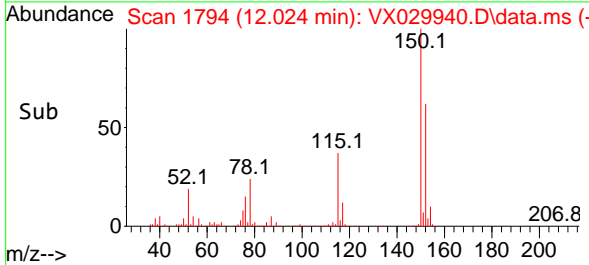
Tgt Ion:117 Resp: 313134
 Ion Ratio Lower Upper
 117 100
 82 54.0 42.7 64.1
 119 31.4 25.4 38.2

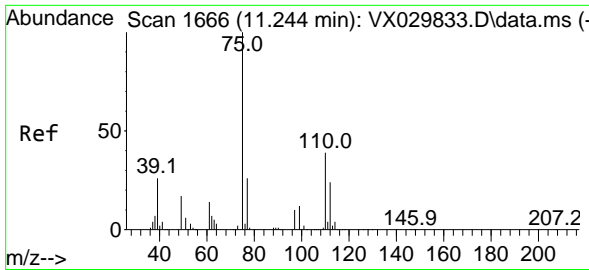


#72
 1,4-Dichlorobenzene-d4
 Concen: 50.000 ug/l
 RT: 12.024 min Scan# 1794
 Delta R.T. 0.000 min
 Lab File: VX029940.D
 Acq: 06 Jul 2022 13:44



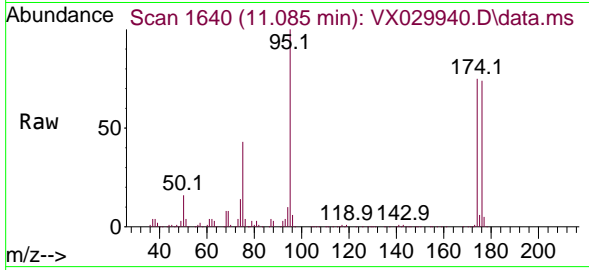
Tgt Ion:152 Resp: 132704
 Ion Ratio Lower Upper
 152 100
 115 59.8 40.5 121.5
 150 157.1 0.0 347.0



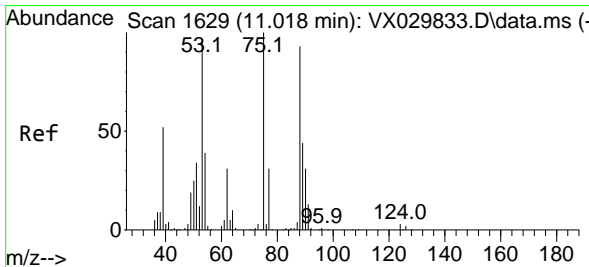
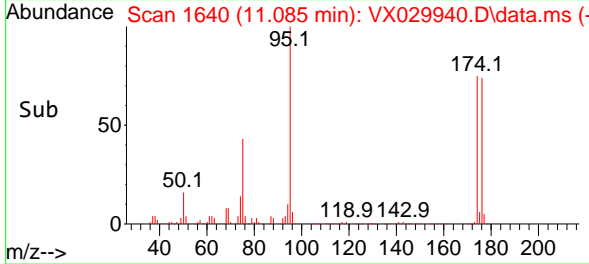
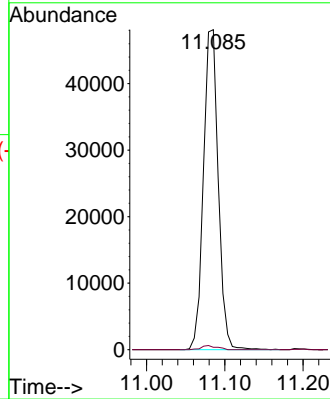


#76
 1,2,3-Trichloropropane
 Concen: 19.836 ug/l
 RT: 11.085 min Scan# 1640
 Delta R.T. -0.159 min
 Lab File: VX029940.D
 Acq: 06 Jul 2022 13:44

Instrument : MSVOA_X
 ClientSampleId :



Tgt Ion: 75 Resp: 63015
 Ion Ratio Lower Upper
 75 100
 77 1.4 19.8 59.3#



#81
 trans-1,4-Dichloro-2-butene
 Concen: 62.995 ug/l
 RT: 11.085 min Scan# 1640
 Delta R.T. 0.067 min
 Lab File: VX029940.D
 Acq: 06 Jul 2022 13:44

Tgt Ion: 75 Resp: 63015
 Ion Ratio Lower Upper
 75 100
 53 0.0 74.2 111.4#
 89 0.0 34.8 52.2#

