

Data Path : Z:\voasrv\HPCHEM1\MSVOA_X\Data\VX070623\
 Data File : VX036441.D
 Acq On : 06 Jul 2023 17:52
 Operator : JC/MD
 Sample : 03500-03
 Misc : 5.0mL/MSVOA_X/WATER
 ALS Vial : 22 Sample Multiplier: 1

Instrument :
 MSVOA_X
 ClientSampleId :
 MW-2

Quant Time: Jul 07 01:51:09 2023
 Quant Method : Z:\voasrv\HPCHEM1\MSVOA_X\Method\82X062323W.M
 Quant Title : SW846 8260
 QLast Update : Fri Jun 23 15:03:28 2023
 Response via : Initial Calibration

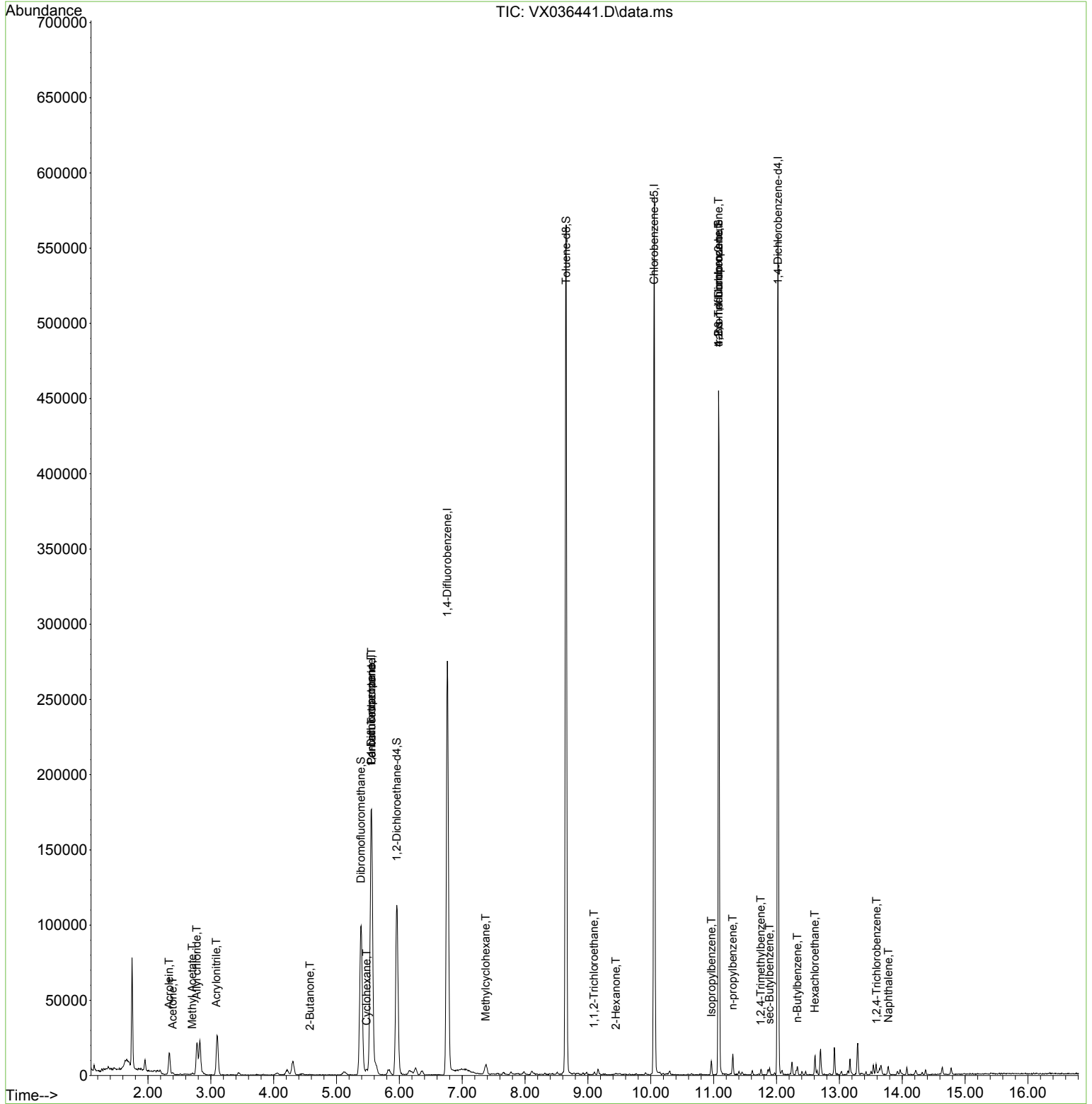
| Compound | R.T. | QIon | Response | Conc | Units | Dev(Min) |
|-------------------------------|--------|----------------|------------|---------|--------|----------|
| ----- | | | | | | |
| Internal Standards | | | | | | |
| 1) Pentafluorobenzene | 5.556 | 168 | 166785 | 50.000 | ug/l | 0.00 |
| 34) 1,4-Difluorobenzene | 6.763 | 114 | 281722 | 50.000 | ug/l | 0.00 |
| 63) Chlorobenzene-d5 | 10.055 | 117 | 253877 | 50.000 | ug/l | 0.00 |
| 72) 1,4-Dichlorobenzene-d4 | 12.024 | 152 | 113289 | 50.000 | ug/l | 0.00 |
| System Monitoring Compounds | | | | | | |
| 33) 1,2-Dichloroethane-d4 | 5.958 | 65 | 109377 | 45.750 | ug/l | 0.00 |
| Spiked Amount | 50.000 | Range 78 - 117 | Recovery = | 91.500% | | |
| 35) Dibromofluoromethane | 5.385 | 113 | 88824 | 47.817 | ug/l | 0.00 |
| Spiked Amount | 50.000 | Range 75 - 124 | Recovery = | 95.640% | | |
| 50) Toluene-d8 | 8.653 | 98 | 346453 | 49.935 | ug/l | 0.00 |
| Spiked Amount | 50.000 | Range 92 - 112 | Recovery = | 99.860% | | |
| 62) 4-Bromofluorobenzene | 11.079 | 95 | 117349 | 48.018 | ug/l | 0.00 |
| Spiked Amount | 50.000 | Range 83 - 123 | Recovery = | 96.040% | | |
| Target Compounds | | | | | | |
| | | | | | | Qvalue |
| 13) Acrolein | 2.337 | 56 | 2228 | 3.728 | ug/l # | 81 |
| 14) Allyl chloride | 2.776 | 41 | 7052 | 2.289 | ug/l # | 61 |
| 15) Acrylonitrile | 3.087 | 53 | 780 | 0.707 | ug/l # | 39 |
| 16) Acetone | 2.392 | 43 | 1589 | 1.555 | ug/l # | 83 |
| 18) Methyl Acetate | 2.703 | 43 | 1506 | 0.358 | ug/l # | 86 |
| 25) 2-Butanone | 4.574 | 43 | 324 | 0.221 | ug/l # | 51 |
| 31) Cyclohexane | 5.476 | 56 | 1804 | 0.589 | ug/l # | 74 |
| 36) 1,1-Dichloropropene | 5.550 | 75 | 13105 | 4.733 | ug/l # | 49 |
| 38) Carbon Tetrachloride | 5.556 | 117 | 17637 | 6.974 | ug/l # | 13 |
| 39) Methylcyclohexane | 7.372 | 83 | 2530 | 0.763 | ug/l | 93 |
| 55) 1,1,2-Trichloroethane | 9.098 | 97 | 631 | 0.310 | ug/l # | 17 |
| 59) 2-Hexanone | 9.445 | 43 | 441 | 0.208 | ug/l # | 26 |
| 73) Isopropylbenzene | 10.963 | 105 | 4647 | 0.544 | ug/l | 97 |
| 76) 1,2,3-Trichloropropane | 11.079 | 75 | 60238 | 24.928 | ug/l # | 38 |
| 78) n-propylbenzene | 11.305 | 91 | 8434 | 0.846 | ug/l | 97 |
| 81) trans-1,4-Dichloro-2-b... | 11.079 | 75 | 60238 | 81.259 | ug/l # | 5 |
| 84) 1,2,4-Trimethylbenzene | 11.750 | 105 | 1742 | 0.244 | ug/l | 89 |
| 85) sec-Butylbenzene | 11.890 | 105 | 2259 | 0.257 | ug/l | 93 |
| 89) n-Butylbenzene | 12.329 | 91 | 2616 | 0.399 | ug/l | 88 |
| 90) Hexachloroethane | 12.609 | 117 | 709 | 0.635 | ug/l # | 17 |
| 93) 1,2,4-Trichlorobenzene | 13.591 | 180 | 524 | 0.224 | ug/l # | 73 |
| 95) Naphthalene | 13.780 | 128 | 4068 | 0.526 | ug/l # | 93 |
| ----- | | | | | | |

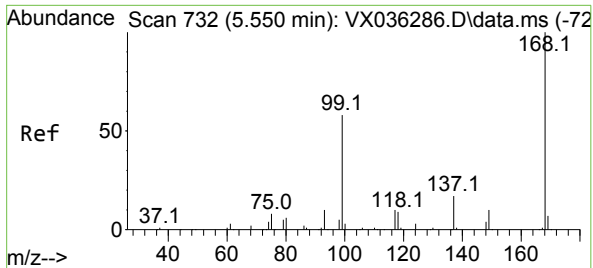
(#) = qualifier out of range (m) = manual integration (+) = signals summed

Data Path : Z:\voasrv\HPCHEM1\MSVOA_X\Data\VX070623\
 Data File : VX036441.D
 Acq On : 06 Jul 2023 17:52
 Operator : JC/MD
 Sample : 03500-03
 Misc : 5.0mL/MSVOA_X/WATER
 ALS Vial : 22 Sample Multiplier: 1

Instrument :
 MSVOA_X
 ClientSampleId :
 MW-2

Quant Time: Jul 07 01:51:09 2023
 Quant Method : Z:\voasrv\HPCHEM1\MSVOA_X\Method\82X062323W.M
 Quant Title : SW846 8260
 QLast Update : Fri Jun 23 15:03:28 2023
 Response via : Initial Calibration

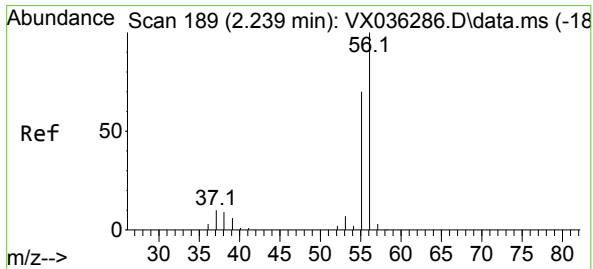
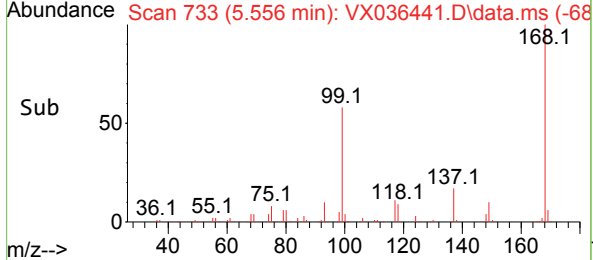
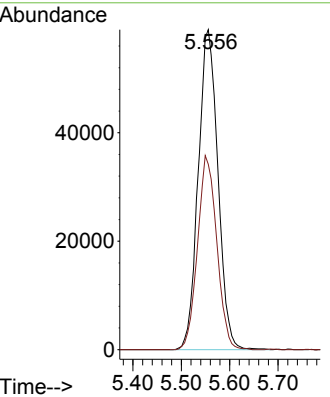
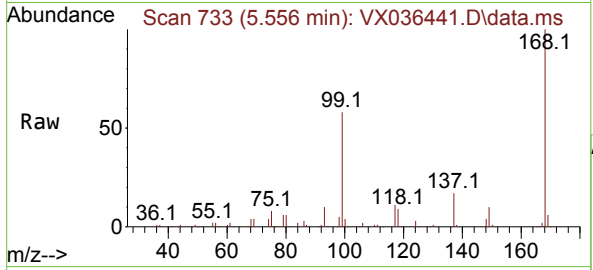




#1
 Pentafluorobenzene
 Concen: 50.000 ug/l
 RT: 5.556 min Scan# 71
 Delta R.T. 0.007 min
 Lab File: VX036441.D
 Acq: 06 Jul 2023 17:52

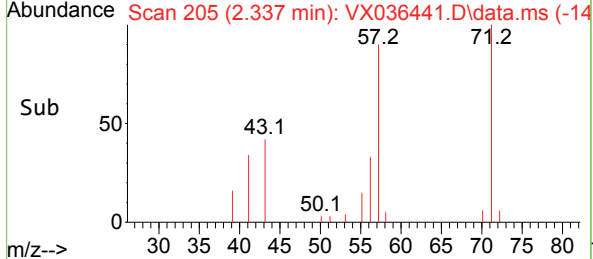
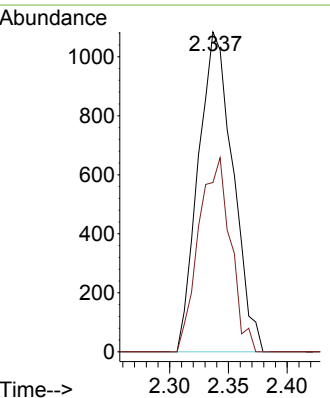
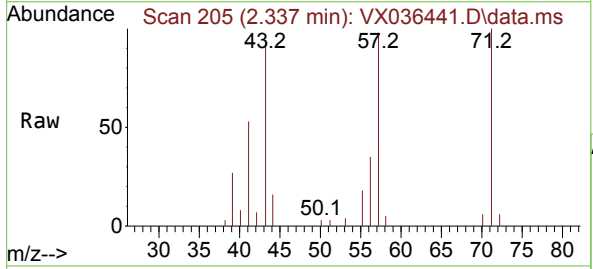
Instrument : MSVOA_X
 ClientSampleId : MW-2

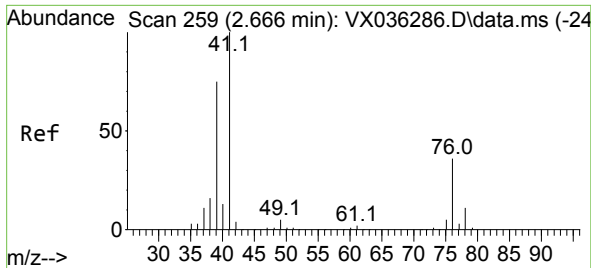
Tgt Ion:168 Resp: 166785
 Ion Ratio Lower Upper
 168 100
 99 57.9 56.6 85.0



#13
 Acrolein
 Concen: 3.728 ug/l
 RT: 2.337 min Scan# 205
 Delta R.T. 0.098 min
 Lab File: VX036441.D
 Acq: 06 Jul 2023 17:52

Tgt Ion: 56 Resp: 2228
 Ion Ratio Lower Upper
 56 100
 55 55.9 57.1 85.7#

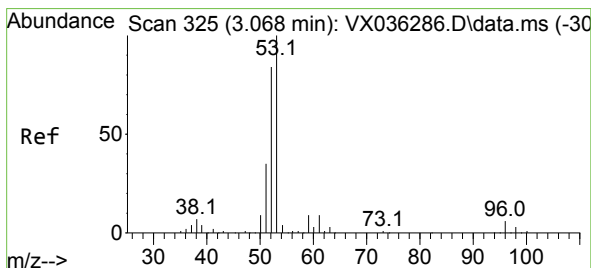
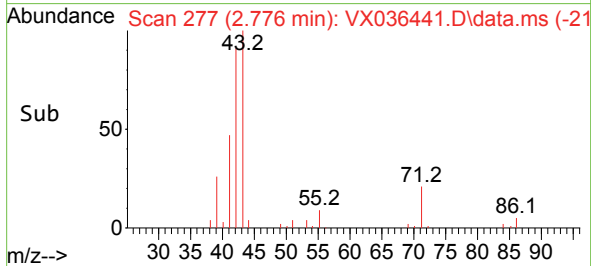
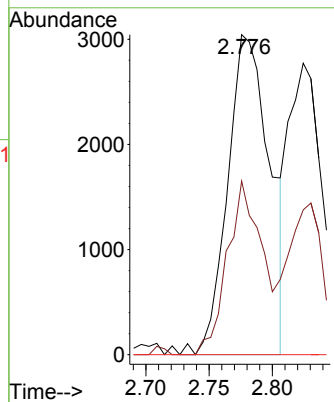
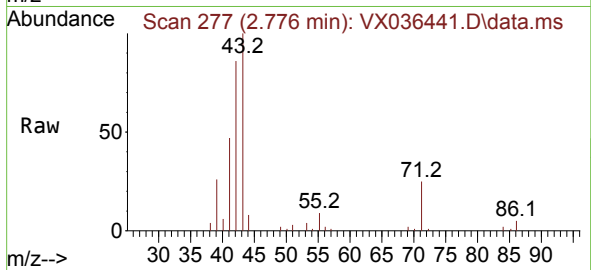




#14
 Allyl chloride
 Concen: 2.289 ug/l
 RT: 2.776 min Scan# 21
 Delta R.T. 0.110 min
 Lab File: VX036441.D
 Acq: 06 Jul 2023 17:52

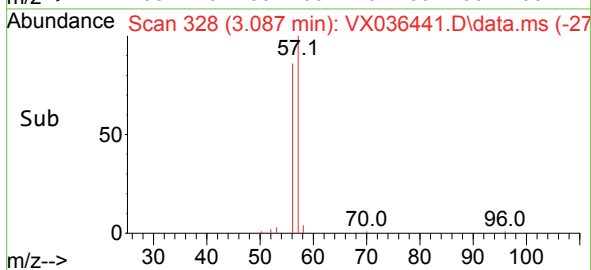
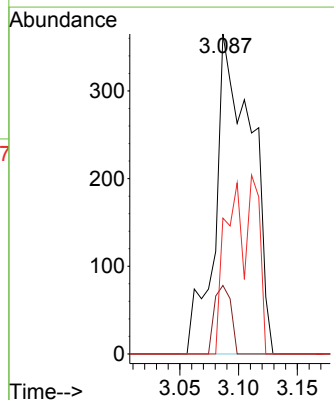
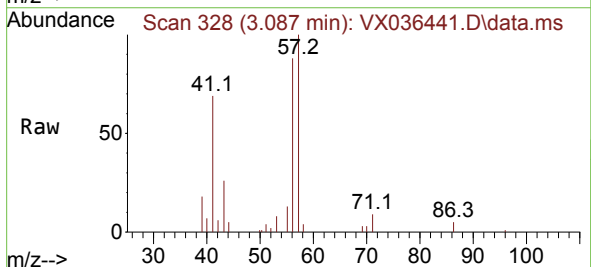
Instrument : MSVOA_X
 ClientSampleId : MW-2

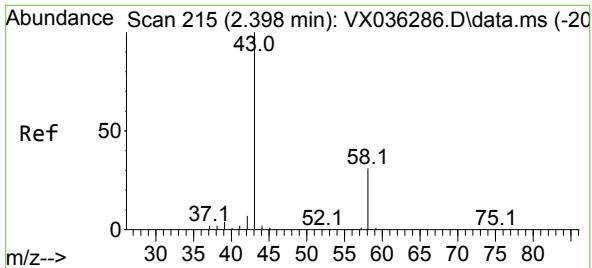
| Tgt Ion | Resp | Lower | Upper |
|---------|------|-------|-------|
| 41 | 100 | | |
| 39 | 44.3 | 55.8 | 83.6# |
| 76 | 0.0 | 24.3 | 36.5# |



#15
 Acrylonitrile
 Concen: 0.707 ug/l
 RT: 3.087 min Scan# 328
 Delta R.T. 0.013 min
 Lab File: VX036441.D
 Acq: 06 Jul 2023 17:52

| Tgt Ion | Resp | Lower | Upper |
|---------|------|-------|-------|
| 53 | 100 | | |
| 52 | 9.7 | 66.0 | 99.0# |
| 51 | 27.3 | 29.8 | 44.6# |

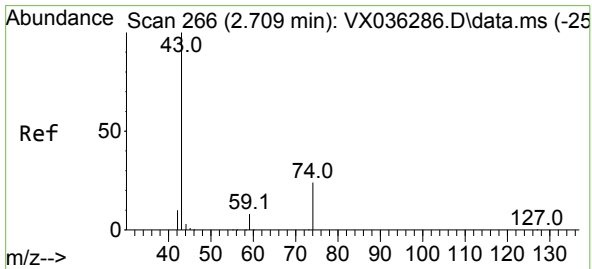
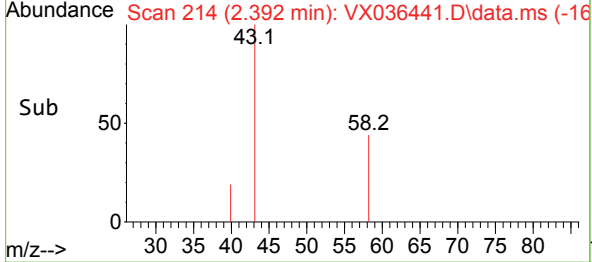
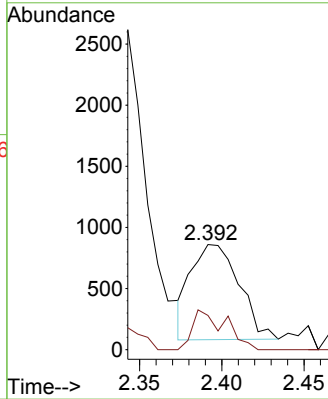
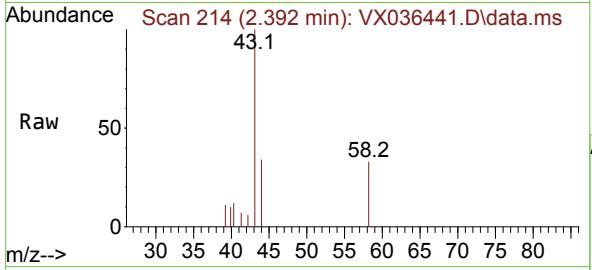




#16
 Acetone
 Concen: 1.555 ug/l
 RT: 2.392 min Scan# 215
 Delta R.T. -0.012 min
 Lab File: VX036441.D
 Acq: 06 Jul 2023 17:52

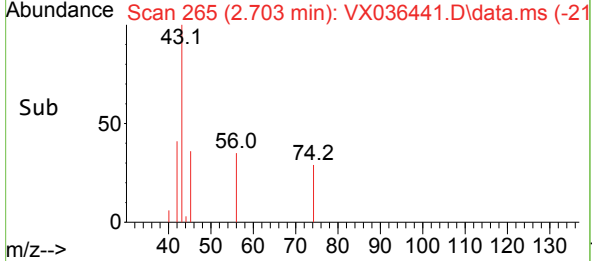
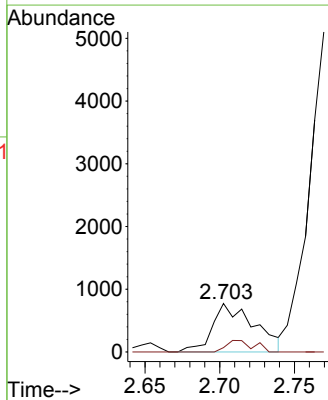
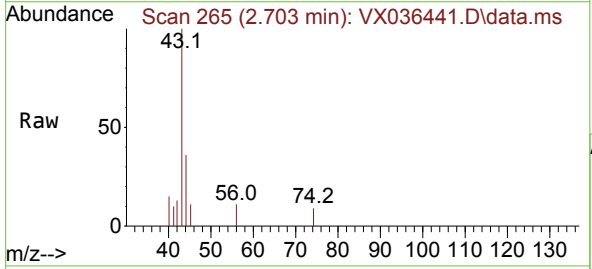
Instrument : MSVOA_X
 ClientSampleId : MW-2

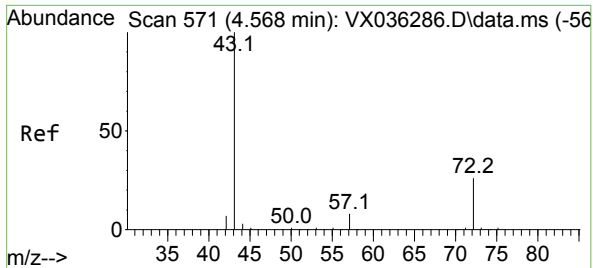
Tgt Ion: 43 Resp: 1589
 Ion Ratio Lower Upper
 43 100
 58 36.2 21.9 32.9#



#18
 Methyl Acetate
 Concen: 0.358 ug/l
 RT: 2.703 min Scan# 265
 Delta R.T. -0.006 min
 Lab File: VX036441.D
 Acq: 06 Jul 2023 17:52

Tgt Ion: 43 Resp: 1506
 Ion Ratio Lower Upper
 43 100
 74 15.4 17.8 26.8#

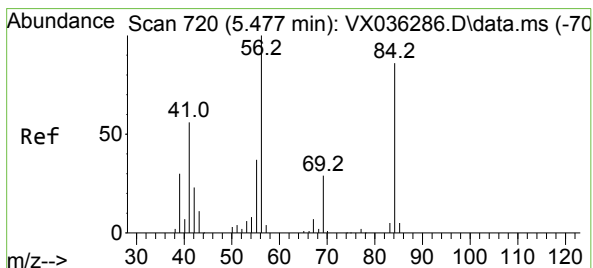
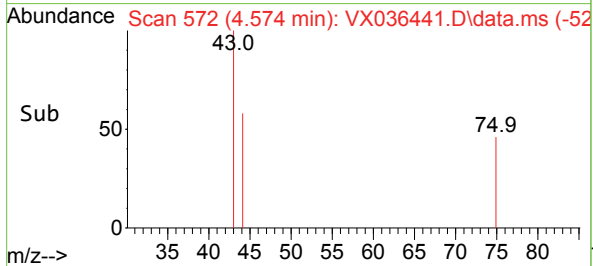
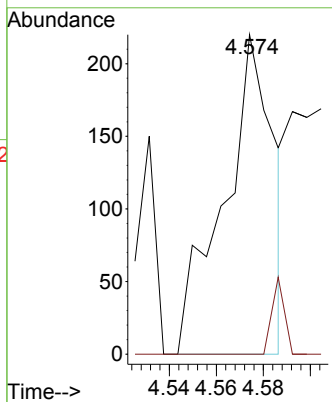
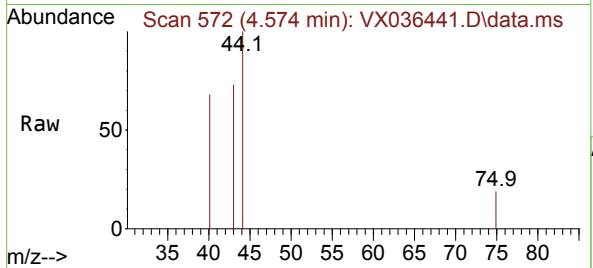




#25
 2-Butanone
 Concen: 0.221 ug/l
 RT: 4.574 min Scan# 51
 Delta R.T. 0.006 min
 Lab File: VX036441.D
 Acq: 06 Jul 2023 17:52

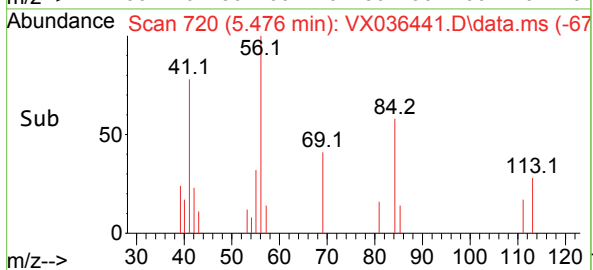
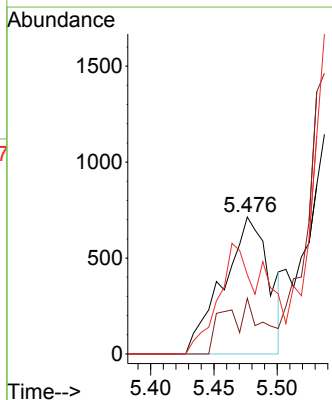
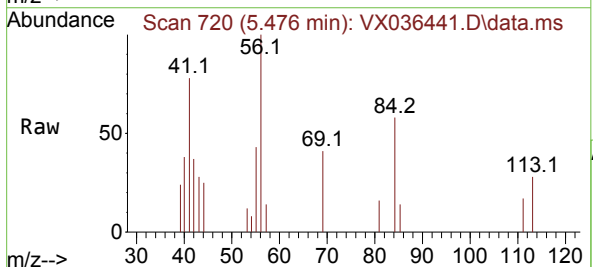
Instrument : MSVOA_X
 ClientSampleId : MW-2

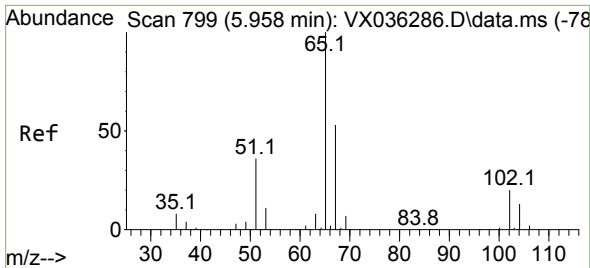
Tgt Ion: 43 Resp: 324
 Ion Ratio Lower Upper
 43 100
 72 0.0 19.4 29.2#



#31
 Cyclohexane
 Concen: 0.589 ug/l
 RT: 5.476 min Scan# 720
 Delta R.T. 0.006 min
 Lab File: VX036441.D
 Acq: 06 Jul 2023 17:52

Tgt Ion: 56 Resp: 1804
 Ion Ratio Lower Upper
 56 100
 69 40.6 23.4 35.2#
 84 57.8 65.9 98.9#

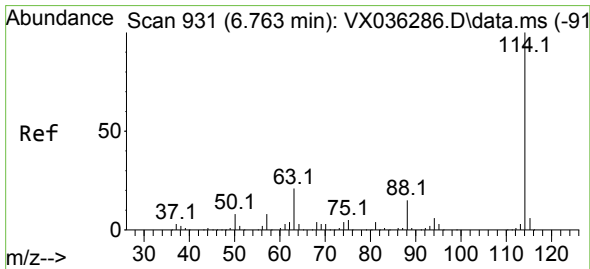
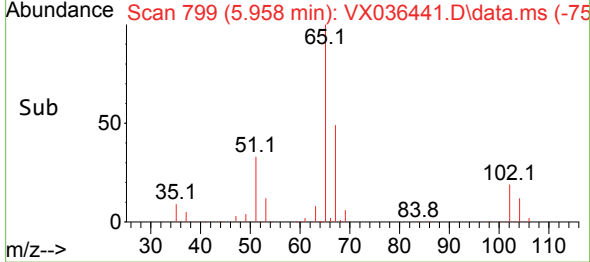
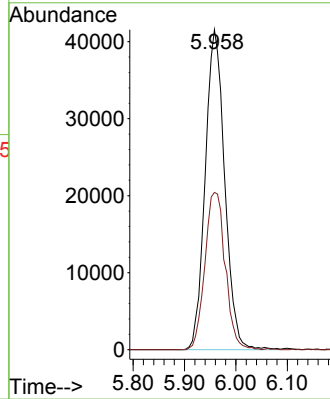
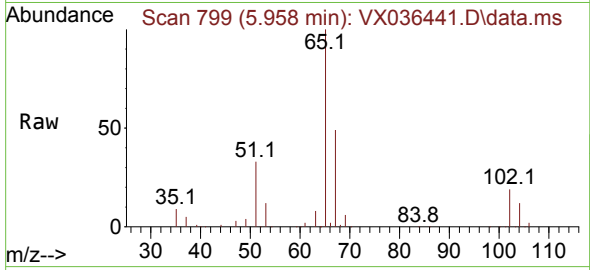




#33
 1,2-Dichloroethane-d4
 Concen: 45.750 ug/l
 RT: 5.958 min Scan# 799
 Delta R.T. 0.000 min
 Lab File: VX036441.D
 Acq: 06 Jul 2023 17:52

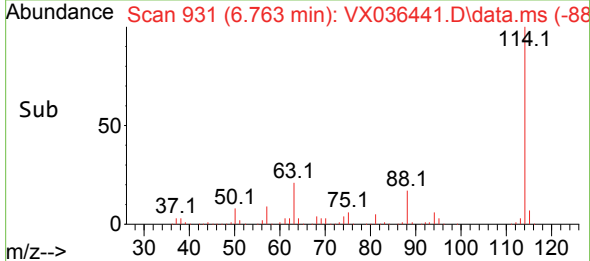
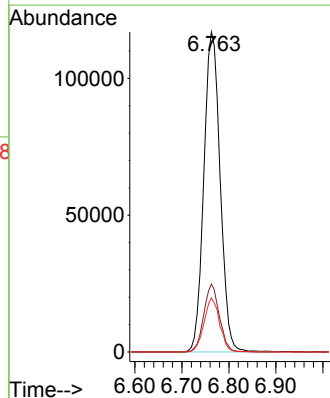
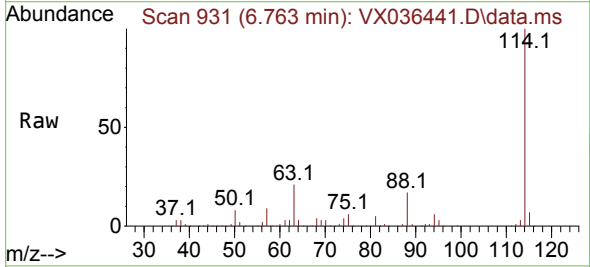
Instrument : MSVOA_X
 ClientSampleId : MW-2

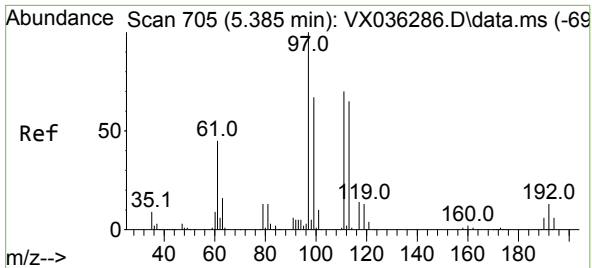
Tgt Ion: 65 Resp: 109377
 Ion Ratio Lower Upper
 65 100
 67 51.3 0.0 100.2



#34
 1,4-Difluorobenzene
 Concen: 50.000 ug/l
 RT: 6.763 min Scan# 931
 Delta R.T. -0.000 min
 Lab File: VX036441.D
 Acq: 06 Jul 2023 17:52

Tgt Ion: 114 Resp: 281722
 Ion Ratio Lower Upper
 114 100
 63 21.2 0.0 45.0
 88 16.9 0.0 36.6

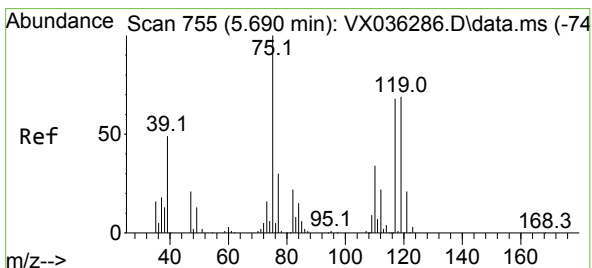
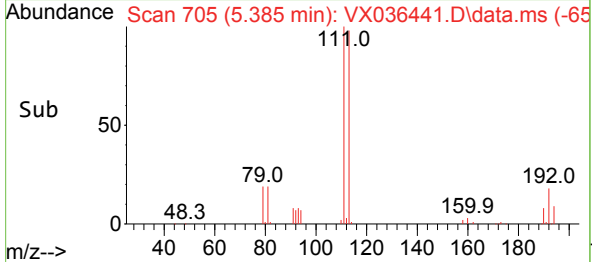
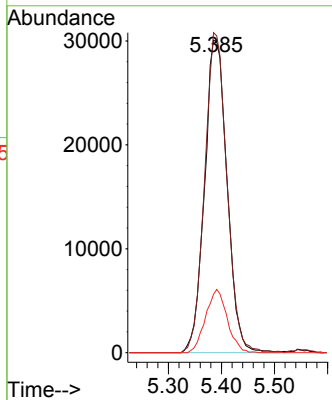
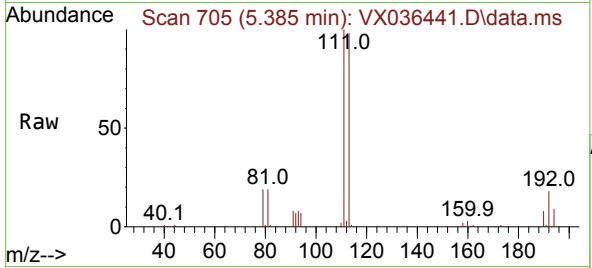




#35
 Dibromofluoromethane
 Concen: 47.817 ug/l
 RT: 5.385 min Scan# 705
 Delta R.T. -0.000 min
 Lab File: VX036441.D
 Acq: 06 Jul 2023 17:52

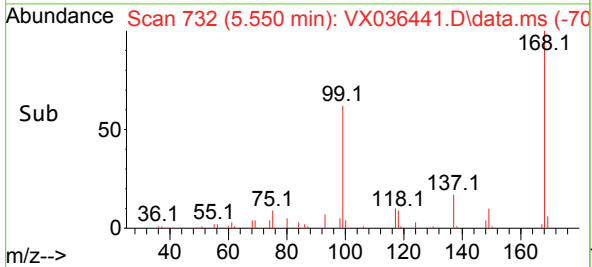
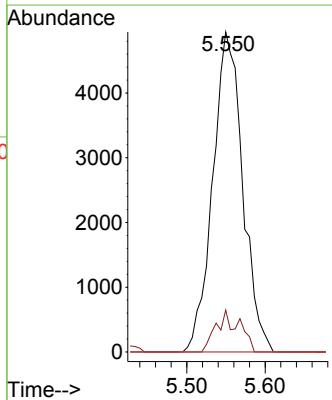
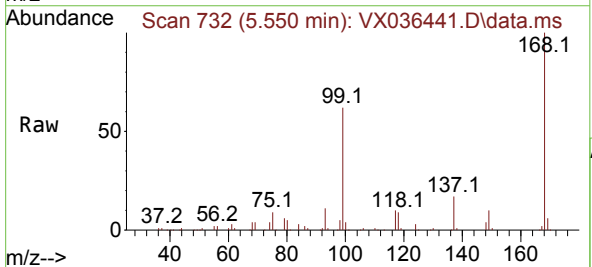
Instrument : MSVOA_X
 ClientSampleId : MW-2

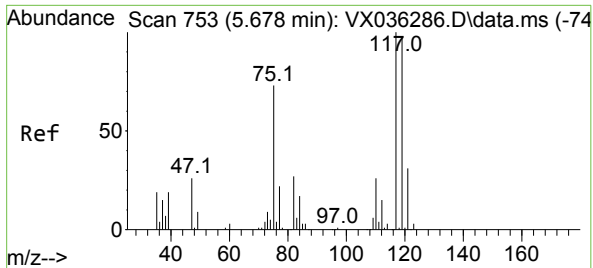
| | | |
|-------------|-------|------------|
| Tgt Ion:113 | Resp: | 88824 |
| Ion Ratio | Lower | Upper |
| 113 | 100 | |
| 111 | 101.2 | 82.9 124.3 |
| 192 | 19.4 | 13.3 19.9 |



#36
 1,1-Dichloropropene
 Concen: 4.733 ug/l
 RT: 5.550 min Scan# 732
 Delta R.T. -0.146 min
 Lab File: VX036441.D
 Acq: 06 Jul 2023 17:52

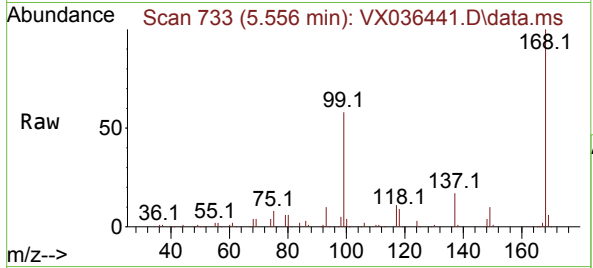
| | | |
|------------|-------|------------|
| Tgt Ion:75 | Resp: | 13105 |
| Ion Ratio | Lower | Upper |
| 75 | 100 | |
| 110 | 7.1 | 17.0 50.9# |
| 77 | 0.0 | 24.7 37.1# |



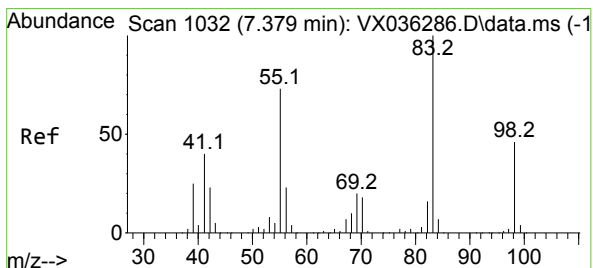
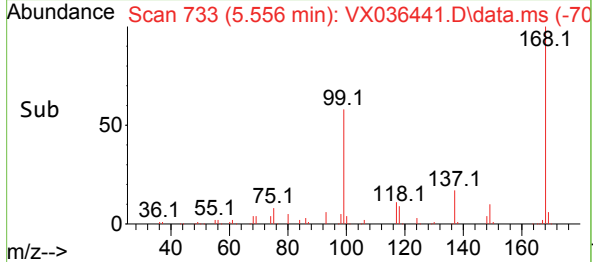
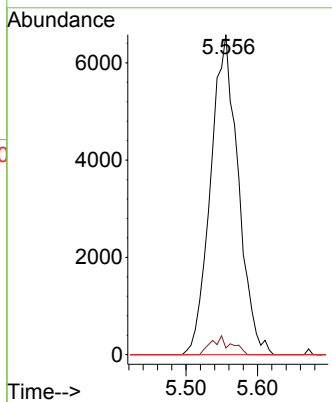


#38
 Carbon Tetrachloride
 Concen: 6.974 ug/l
 RT: 5.556 min Scan# 71
 Delta R.T. -0.122 min
 Lab File: VX036441.D
 Acq: 06 Jul 2023 17:52

Instrument : MSVOA_X
 ClientSampleId : MW-2

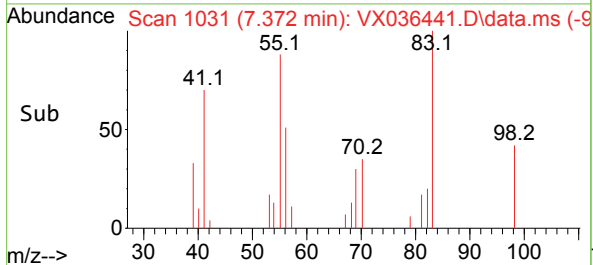
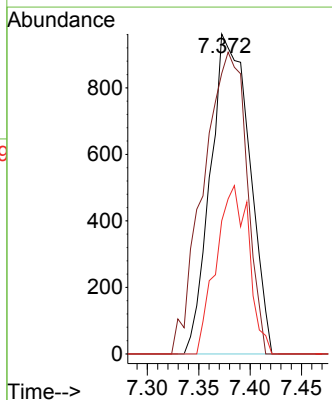
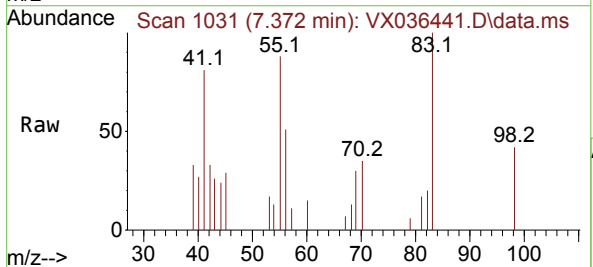


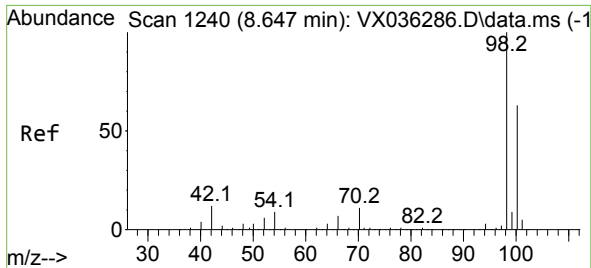
Tgt Ion:117 Resp: 17637
 Ion Ratio Lower Upper
 117 100
 119 2.1 78.2 117.2#
 121 0.0 24.4 36.6#



#39
 Methylcyclohexane
 Concen: 0.763 ug/l
 RT: 7.372 min Scan# 1031
 Delta R.T. -0.006 min
 Lab File: VX036441.D
 Acq: 06 Jul 2023 17:52

Tgt Ion: 83 Resp: 2530
 Ion Ratio Lower Upper
 83 100
 55 87.6 64.6 97.0
 98 41.6 36.7 55.1

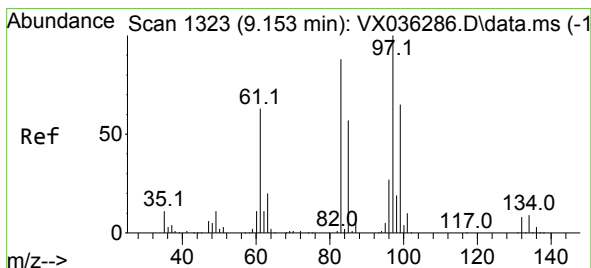
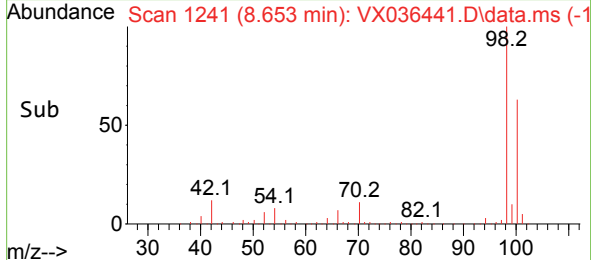
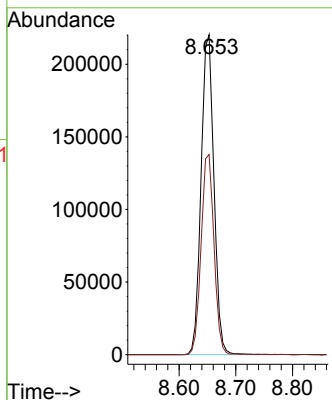
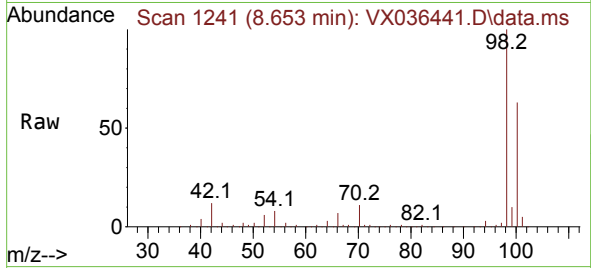




#50
 Toluene-d8
 Concen: 49.935 ug/l
 RT: 8.653 min Scan# 11
 Delta R.T. 0.007 min
 Lab File: VX036441.D
 Acq: 06 Jul 2023 17:52

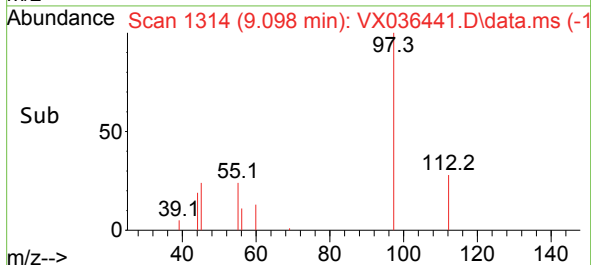
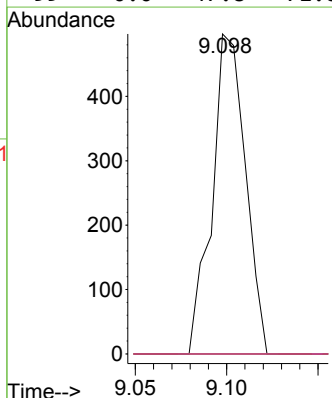
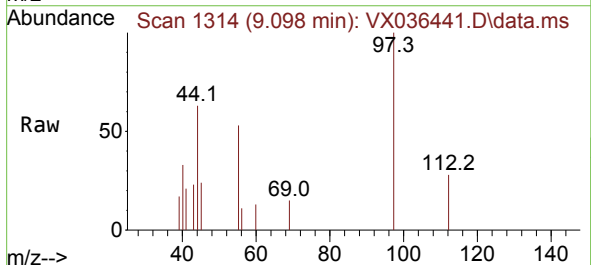
Instrument :
 MSVOA_X
 ClientSampleId :
 MW-2

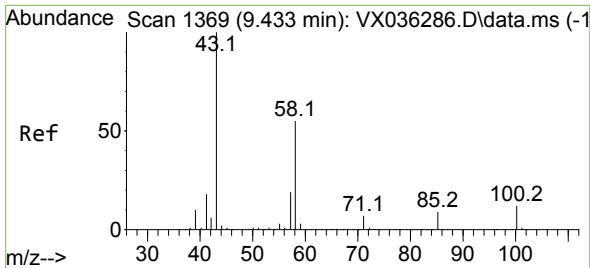
Tgt Ion: 98 Resp: 346453
 Ion Ratio Lower Upper
 98 100
 100 62.9 53.1 79.7



#55
 1,1,2-Trichloroethane
 Concen: 0.310 ug/l
 RT: 9.098 min Scan# 1314
 Delta R.T. -0.054 min
 Lab File: VX036441.D
 Acq: 06 Jul 2023 17:52

Tgt Ion: 97 Resp: 631
 Ion Ratio Lower Upper
 97 100
 83 0.0 65.8 98.8#
 85 0.0 41.6 62.4#
 99 0.0 47.8 71.8#

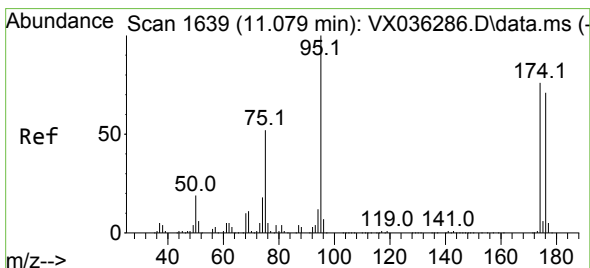
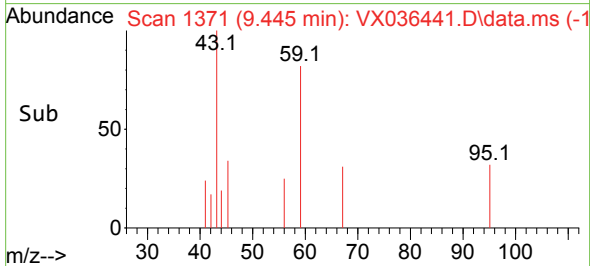
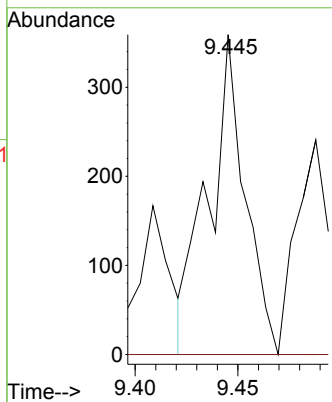
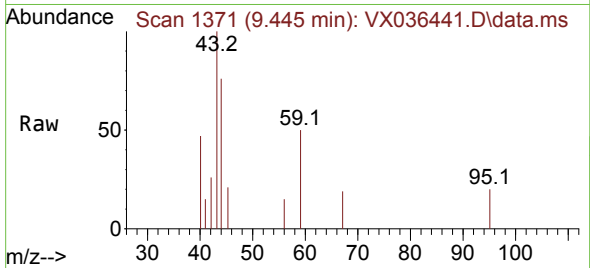




#59
 2-Hexanone
 Concen: 0.208 ug/l
 RT: 9.445 min Scan# 1371
 Delta R.T. 0.012 min
 Lab File: VX036441.D
 Acq: 06 Jul 2023 17:52

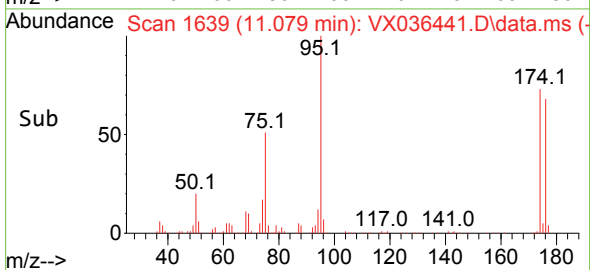
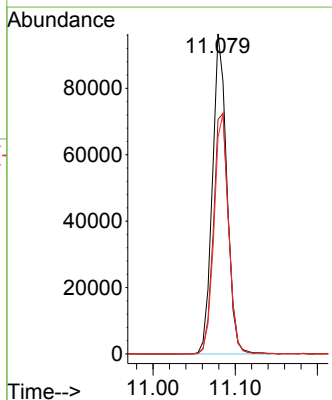
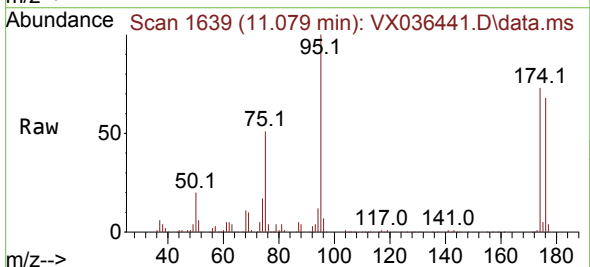
Instrument : MSVOA_X
 ClientSampleId : MW-2

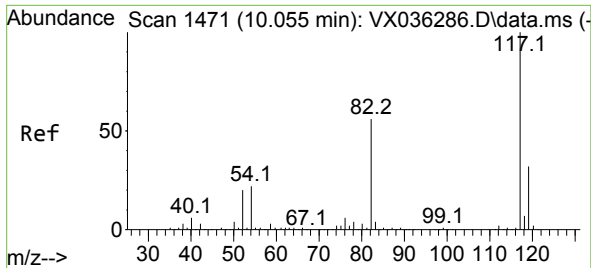
Tgt Ion: 43 Resp: 441
 Ion Ratio Lower Upper
 43 100
 58 0.0 26.2 78.5#



#62
 4-Bromofluorobenzene
 Concen: 48.018 ug/l
 RT: 11.079 min Scan# 1639
 Delta R.T. 0.000 min
 Lab File: VX036441.D
 Acq: 06 Jul 2023 17:52

Tgt Ion: 95 Resp: 117349
 Ion Ratio Lower Upper
 95 100
 174 79.3 0.0 135.6
 176 75.5 0.0 131.0

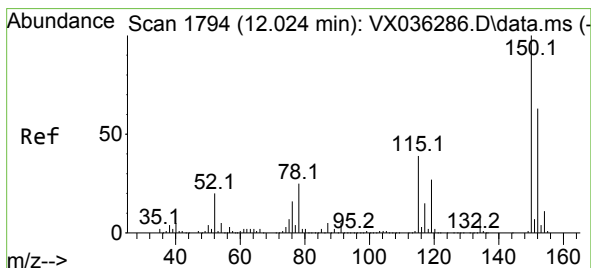
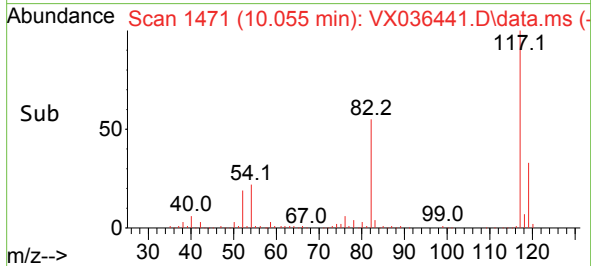
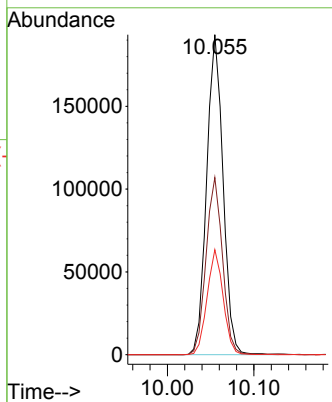
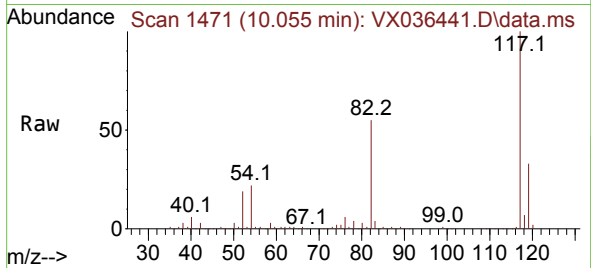




#63
 Chlorobenzene-d5
 Concen: 50.000 ug/l
 RT: 10.055 min Scan# 14
 Delta R.T. -0.000 min
 Lab File: VX036441.D
 Acq: 06 Jul 2023 17:52

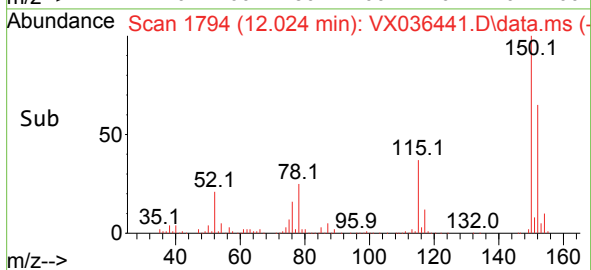
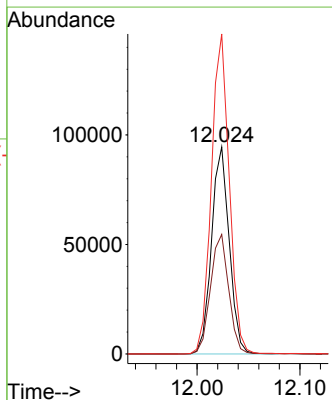
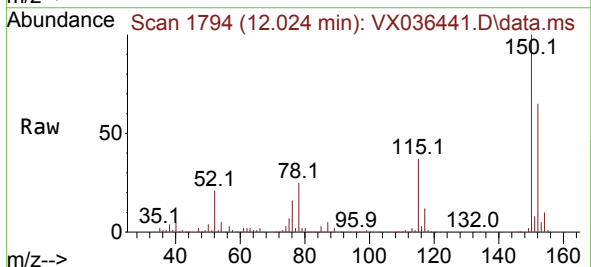
Instrument :
 MSVOA_X
 ClientSampleId :
 MW-2

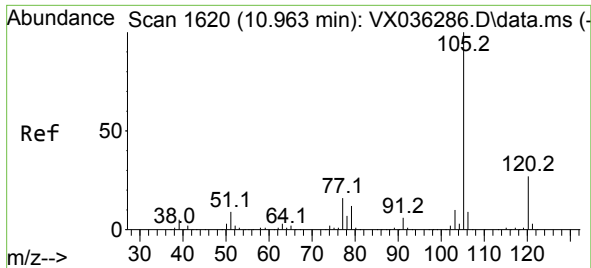
| Tgt Ion | Resp | Lower | Upper |
|---------|--------|-------|-------|
| 117 | 253877 | | |
| 117 | 100 | | |
| 82 | 55.4 | 46.2 | 69.4 |
| 119 | 32.8 | 25.5 | 38.3 |



#72
 1,4-Dichlorobenzene-d4
 Concen: 50.000 ug/l
 RT: 12.024 min Scan# 1794
 Delta R.T. -0.000 min
 Lab File: VX036441.D
 Acq: 06 Jul 2023 17:52

| Tgt Ion | Resp | Lower | Upper |
|---------|--------|-------|-------|
| 152 | 113289 | | |
| 152 | 100 | | |
| 115 | 59.5 | 43.3 | 129.9 |
| 150 | 156.0 | 0.0 | 345.0 |

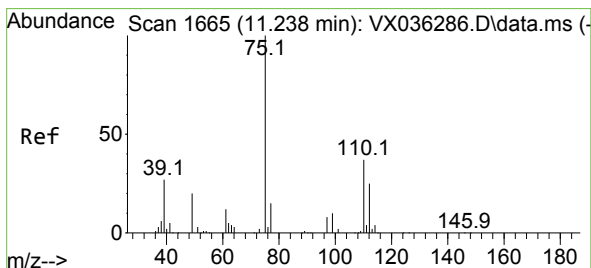
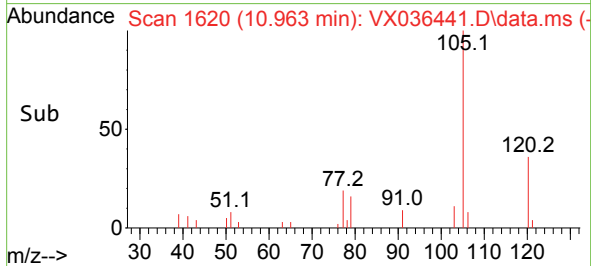
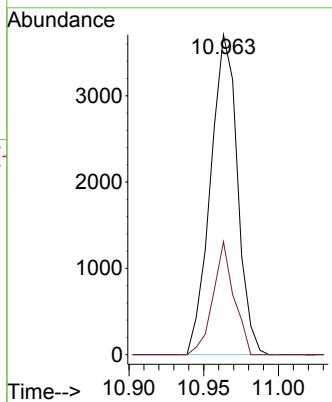
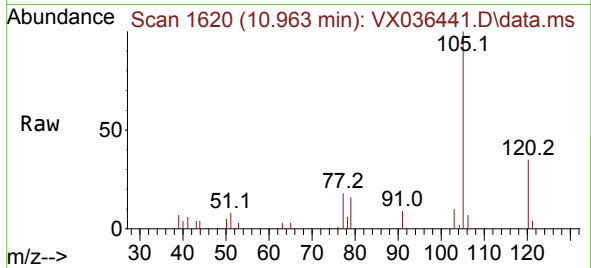




#73
 Isopropylbenzene
 Concen: 0.544 ug/l
 RT: 10.963 min Scan# 1620
 Delta R.T. 0.000 min
 Lab File: VX036441.D
 Acq: 06 Jul 2023 17:52

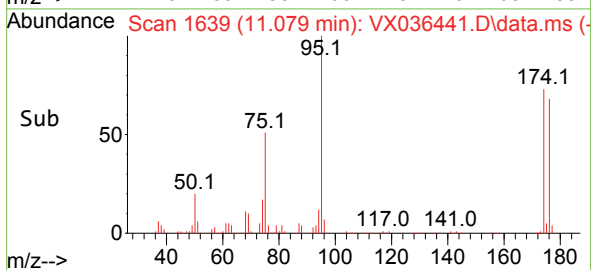
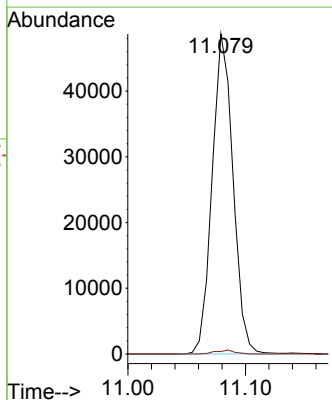
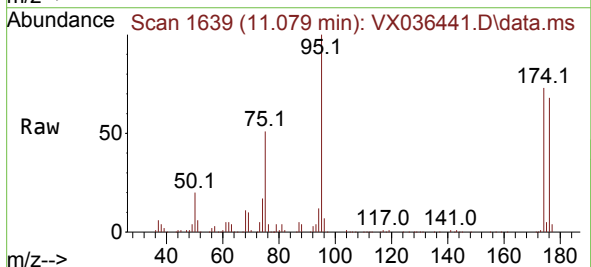
Instrument :
 MSVOA_X
 ClientSampleId :
 MW-2

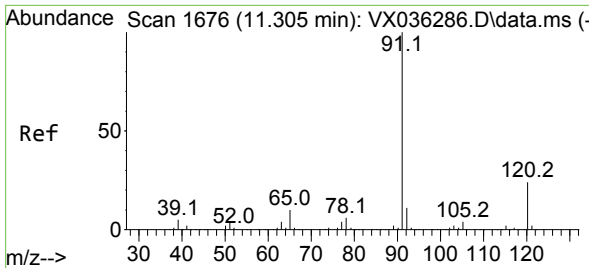
Tgt Ion: 105 Resp: 4647
 Ion Ratio Lower Upper
 105 100
 120 27.4 12.9 38.6



#76
 1,2,3-Trichloropropane
 Concen: 24.928 ug/l
 RT: 11.079 min Scan# 1639
 Delta R.T. -0.159 min
 Lab File: VX036441.D
 Acq: 06 Jul 2023 17:52

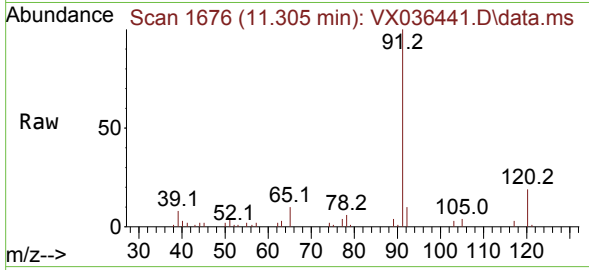
Tgt Ion: 75 Resp: 60238
 Ion Ratio Lower Upper
 75 100
 77 1.1 19.1 57.5#



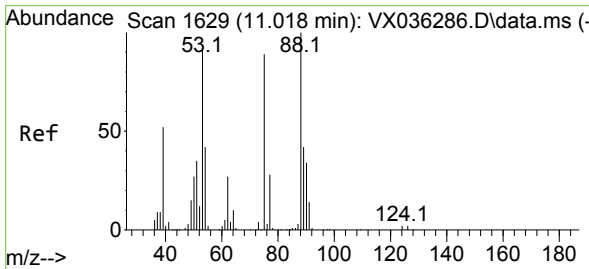
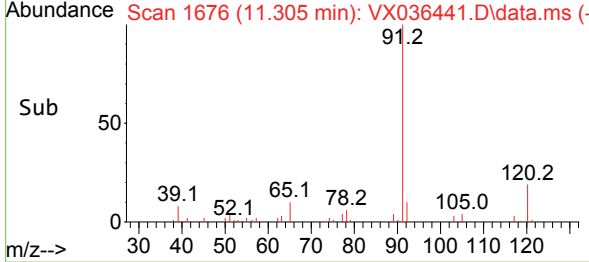
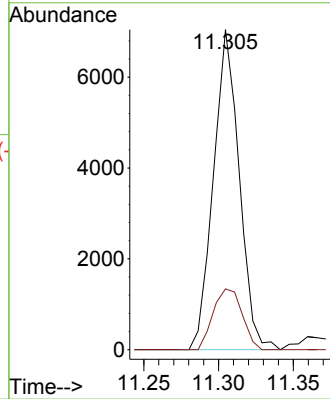


#78
 n-propylbenzene
 Concen: 0.846 ug/l
 RT: 11.305 min Scan# 1676
 Delta R.T. -0.000 min
 Lab File: VX036441.D
 Acq: 06 Jul 2023 17:52

Instrument : MSVOA_X
 ClientSampleId : MW-2

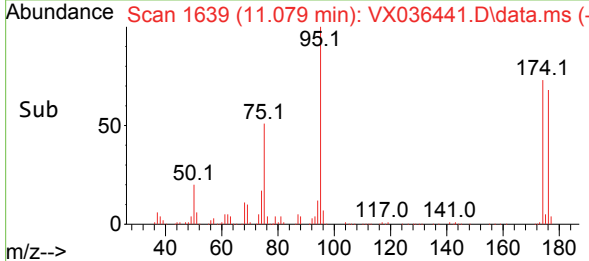
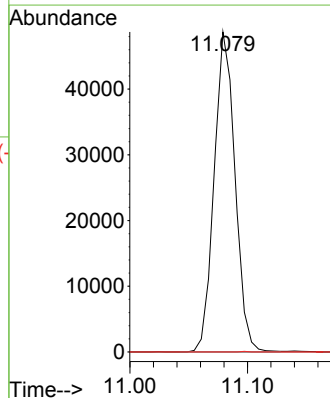
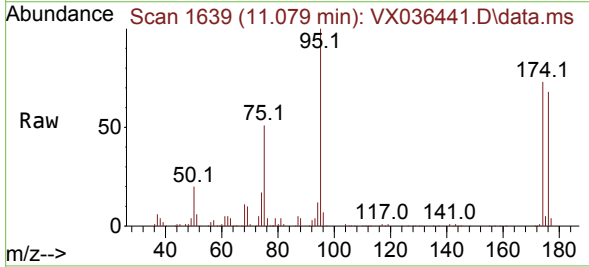


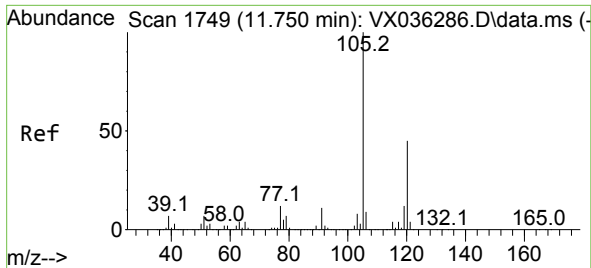
Tgt Ion: 91 Resp: 8434
 Ion Ratio Lower Upper
 91 100
 120 21.3 11.5 34.4



#81
 trans-1,4-Dichloro-2-butene
 Concen: 81.259 ug/l
 RT: 11.079 min Scan# 1639
 Delta R.T. 0.061 min
 Lab File: VX036441.D
 Acq: 06 Jul 2023 17:52

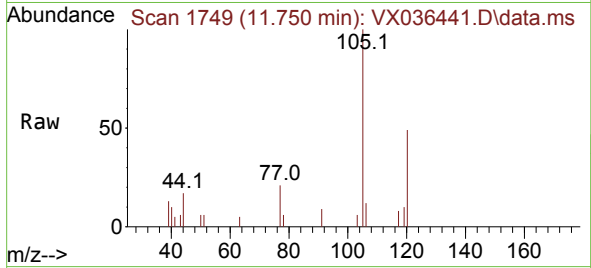
Tgt Ion: 75 Resp: 60238
 Ion Ratio Lower Upper
 75 100
 53 0.0 90.5 135.7#
 89 0.1 36.9 55.3#



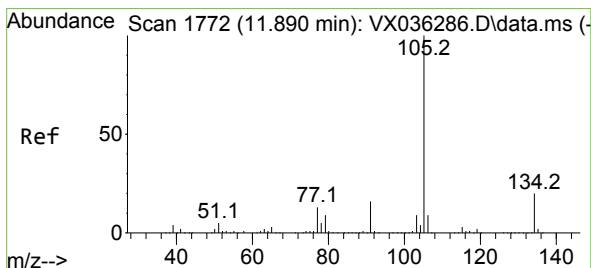
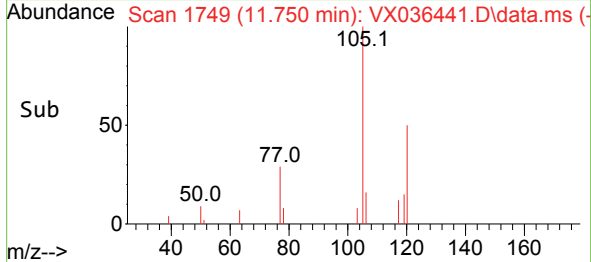
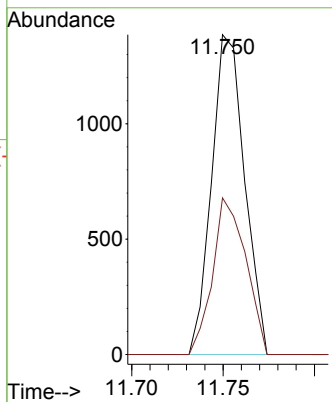


#84
 1,2,4-Trimethylbenzene
 Concen: 0.244 ug/l
 RT: 11.750 min Scan# 1749
 Delta R.T. -0.000 min
 Lab File: VX036441.D
 Acq: 06 Jul 2023 17:52

Instrument : MSVOA_X
 ClientSampleId : MW-2

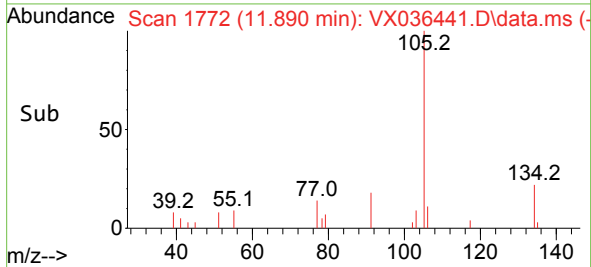
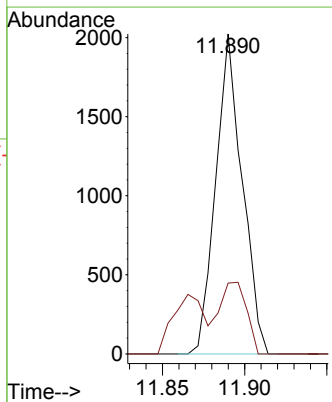
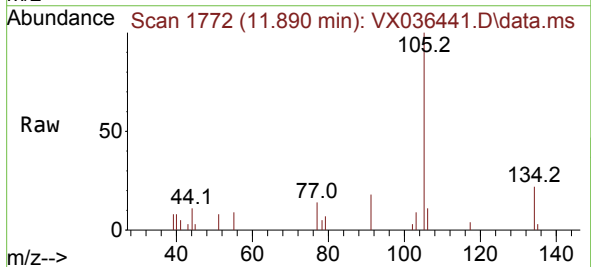


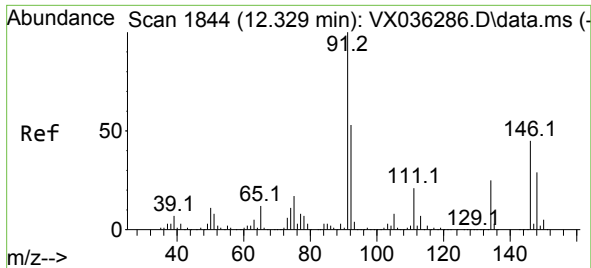
Tgt Ion:105 Resp: 1742
 Ion Ratio Lower Upper
 105 100
 120 49.3 21.2 63.6



#85
 sec-Butylbenzene
 Concen: 0.257 ug/l
 RT: 11.890 min Scan# 1772
 Delta R.T. -0.000 min
 Lab File: VX036441.D
 Acq: 06 Jul 2023 17:52

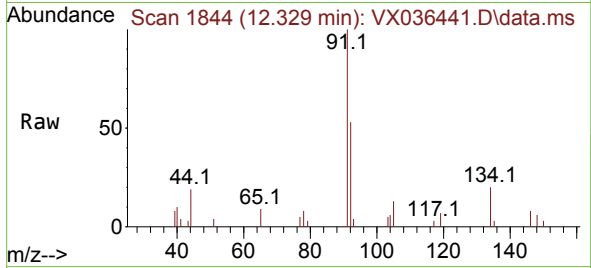
Tgt Ion:105 Resp: 2259
 Ion Ratio Lower Upper
 105 100
 134 22.9 9.8 29.4





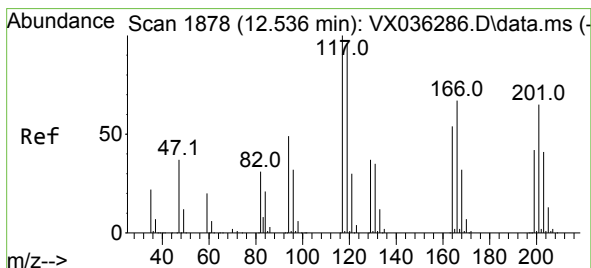
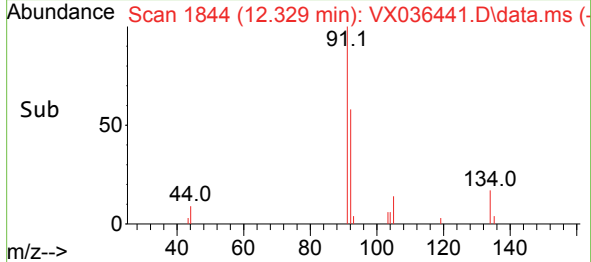
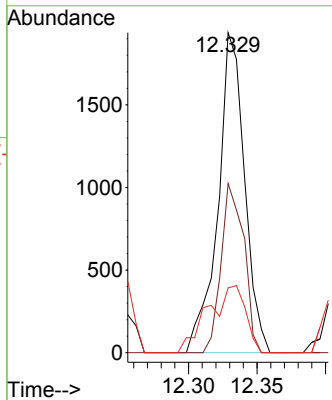
#89
 n-Butylbenzene
 Concen: 0.399 ug/l
 RT: 12.329 min Scan# 1890
 Delta R.T. -0.000 min
 Lab File: VX036441.D
 Acq: 06 Jul 2023 17:52

Instrument : MSVOA_X
 ClientSampleId : MW-2



Tgt Ion: 91 Resp: 2616

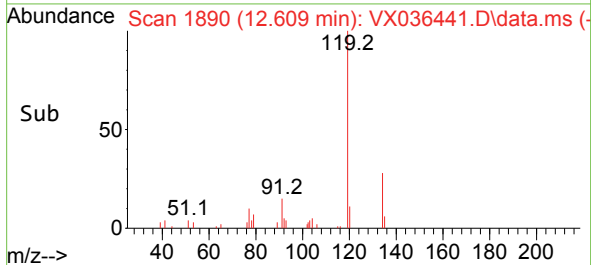
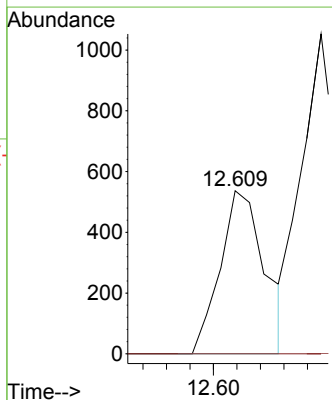
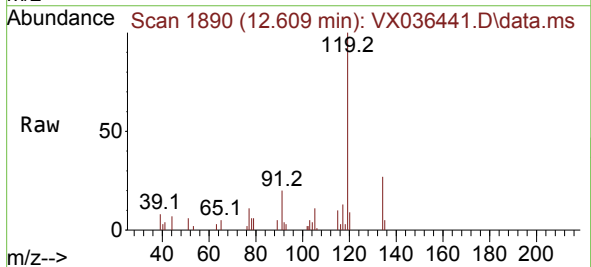
| Ion | Ratio | Lower | Upper |
|-----|-------|-------|-------|
| 91 | 100 | | |
| 92 | 45.2 | 27.4 | 82.0 |
| 134 | 29.7 | 12.6 | 37.8 |

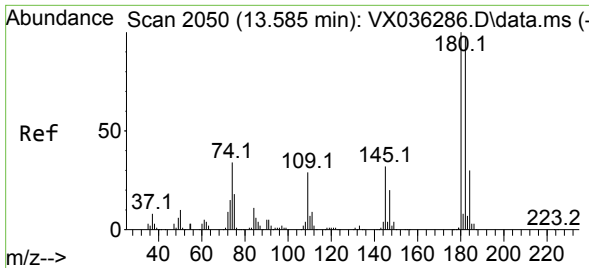


#90
 Hexachloroethane
 Concen: 0.635 ug/l
 RT: 12.609 min Scan# 1890
 Delta R.T. 0.073 min
 Lab File: VX036441.D
 Acq: 06 Jul 2023 17:52

Tgt Ion: 117 Resp: 709

| Ion | Ratio | Lower | Upper |
|-----|-------|-------|-------|
| 117 | 100 | | |
| 201 | 0.0 | 32.9 | 98.6# |



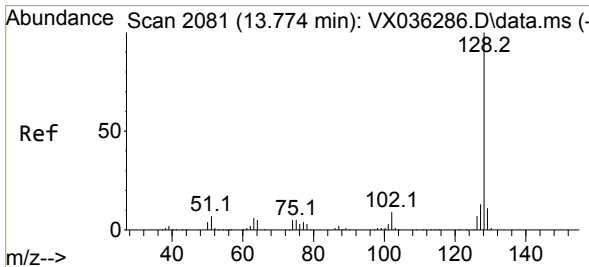
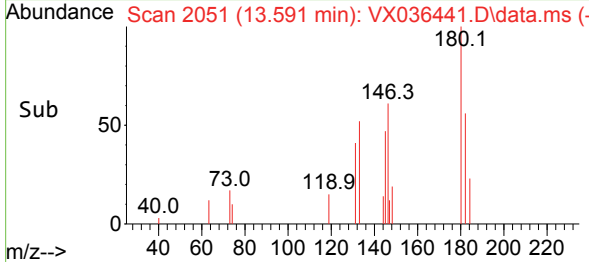
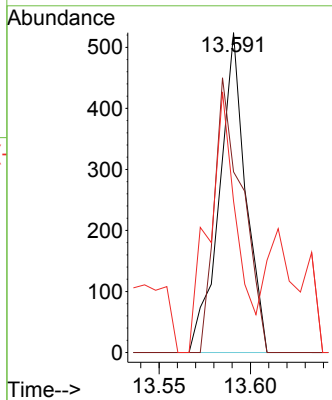
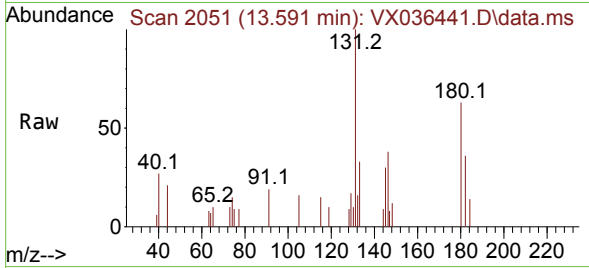


#93
 1,2,4-Trichlorobenzene
 Concen: 0.224 ug/l
 RT: 13.591 min Scan# 2051
 Delta R.T. 0.006 min
 Lab File: VX036441.D
 Acq: 06 Jul 2023 17:52

Instrument : MSVOA_X
 ClientSampleId : MW-2

Tgt Ion:180 Resp: 524

| Ion | Ratio | Lower | Upper |
|-----|-------|-------|-------|
| 180 | 100 | | |
| 182 | 90.6 | 48.3 | 144.8 |
| 145 | 86.1 | 18.0 | 54.0# |



#95
 Naphthalene
 Concen: 0.526 ug/l
 RT: 13.780 min Scan# 2082
 Delta R.T. 0.006 min
 Lab File: VX036441.D
 Acq: 06 Jul 2023 17:52

Tgt Ion:128 Resp: 4068

| Ion | Ratio | Lower | Upper |
|-----|-------|-------|-------|
| 128 | 100 | | |
| 127 | 11.2 | 10.3 | 15.5 |
| 129 | 14.7 | 8.8 | 13.2# |

