

Data Path : Z:\VOASRV\HPCHEM1\MSVOA X\DATA\VX070720\  
 Data File : VX017205.D  
 Acq On : 07 Jul 2020 15:52  
 Operator : JC/SP  
 Sample : L3159-22  
 Misc : 5.0mL/MSVOA X/WATER  
 ALS Vial : 16 Sample Multiplier: 1

Instrument :  
 MSVOA\_X  
 ClientSampleId :  
 40BR-20200629

Integration Parameters: RTEINT.P

Integrator: RTE  
 Smoothing : ON Filtering: 5  
 Sampling : 1 Min Area: 3 % of largest Peak  
 Start Thrs: 0.2 Max Peaks: 100  
 Stop Thrs : 0 Peak Location: TOP

If leading or trailing edge < 100 prefer < Baseline drop else tangent >  
 Peak separation: 5

Method : Z:\VOASRV\HPCHEM1\MSVOA\_X\METHOD\82X062920W.M  
 Title : SW846 8260

Signal : TIC

peak #	R.T. min	first scan	max scan	last scan	PK TY	peak height	corr. area	corr. % max.	% of total
1	1.392	45	50	58	rBV	88657	96423	1.96%	0.729%
2	2.581	237	245	253	rBV	44346	83376	1.69%	0.630%
3	4.562	558	570	598	rBV	1796017	4929964	100.00%	37.250%
4	5.471	708	719	732	rBV	171180	490570	9.95%	3.707%
5	5.629	732	745	759	rBV2	280964	777730	15.78%	5.876%
6	6.031	799	811	824	rBV2	176467	465724	9.45%	3.519%
7	6.830	931	942	953	rBV	422454	1008777	20.46%	7.622%
8	7.190	991	1001	1008	rBV	61533	131146	2.66%	0.991%
9	8.696	1241	1248	1256	rBV	909011	1392251	28.24%	10.520%
10	10.098	1469	1478	1488	rBV	967494	1314729	26.67%	9.934%
11	11.122	1640	1646	1657	rBV	856807	1061118	21.52%	8.018%
12	12.061	1794	1800	1809	rBV	1183890	1425553	28.92%	10.771%
13	16.621	2541	2548	2555	rBV2	31024	57363	1.16%	0.433%

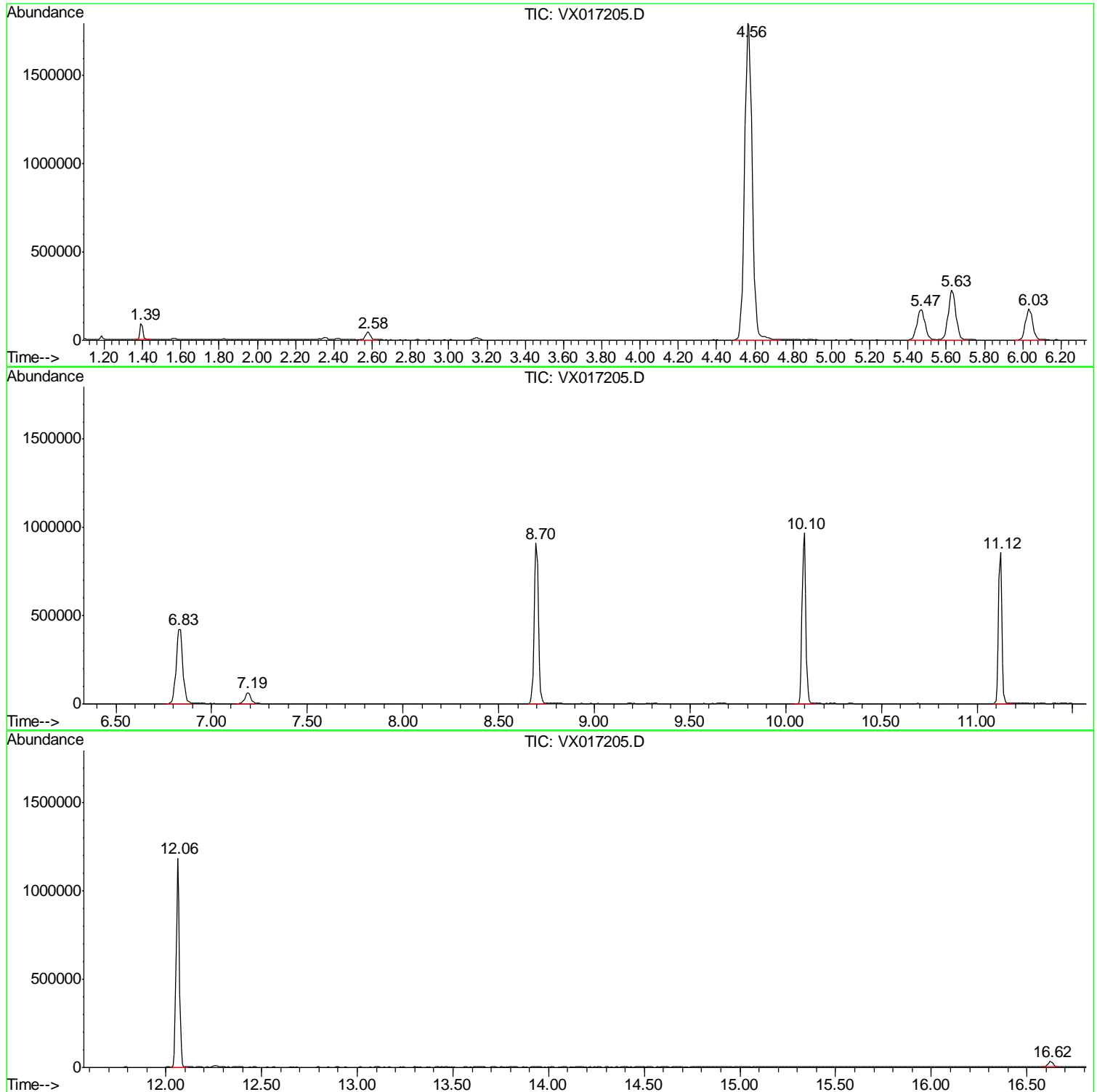
Sum of corrected areas: 13234724

Data Path : Z:\VOASRV\HPCHEM1\MSVOA X\DATA\VX070720\  
Data File : VX017205.D  
Acq On : 07 Jul 2020 15:52  
Operator : JC/SP  
Sample : L3159-22  
Misc : 5.0mL/MSVOA X/WATER  
ALS Vial : 16 Sample Multiplier: 1

Instrument :  
MSVOA\_X  
ClientSampleId :  
40BR-20200629

Quant Method : Z:\VOASRV\HPCHEM1\MSVOA\_X\METHOD\82X062920W.M  
Quant Title : SW846 8260

TIC Library : C:\DATABASE\NIST11.L  
TIC Integration Parameters: LSCINT.P



Data Path : Z:\VOASRV\HPCHEM1\MSVOA X\DATA\VX070720\  
 Data File : VX017205.D  
 Acq On : 07 Jul 2020 15:52  
 Operator : JC/SP  
 Sample : L3159-22  
 Misc : 5.0mL/MSVOA X/WATER  
 ALS Vial : 16 Sample Multiplier: 1

Instrument :  
 MSVOA\_X  
 ClientSampleID :  
 40BR-20200629

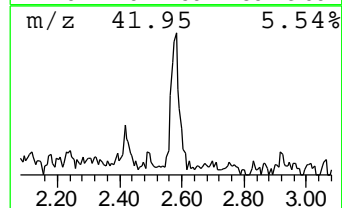
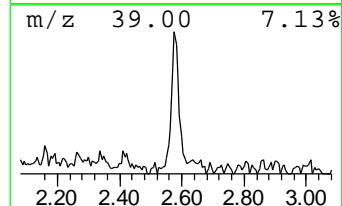
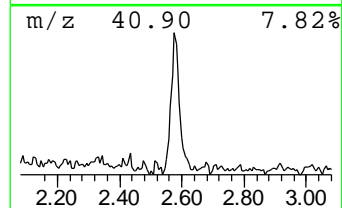
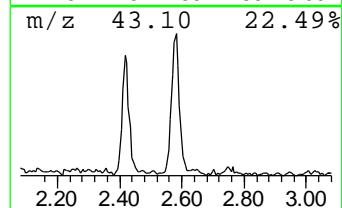
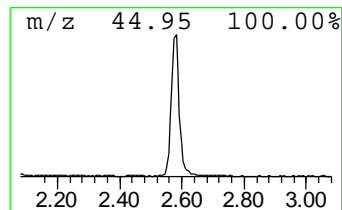
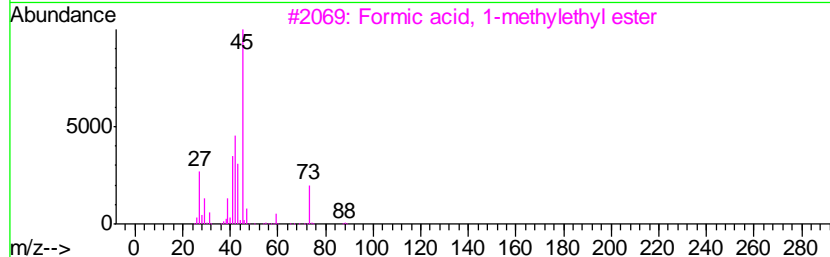
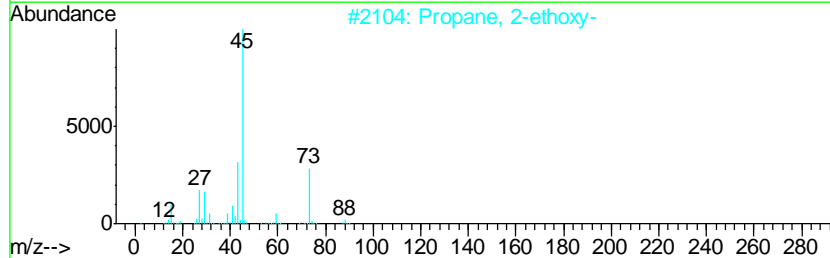
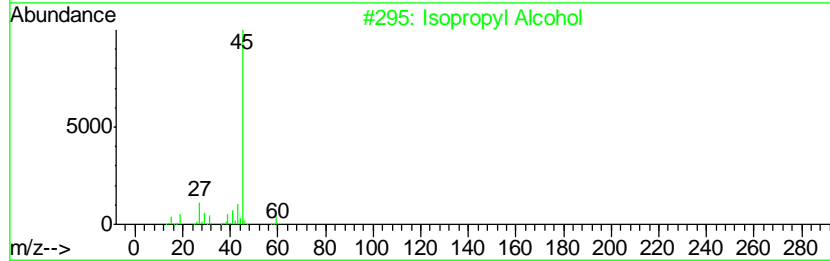
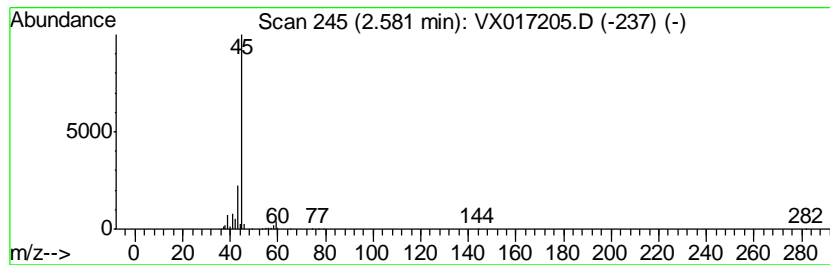
Quant Method : Z:\VOASRV\HPCHEM1\MSVOA\_X\METHOD\82X062920W.M  
 Quant Title : SW846 8260

TIC Library : C:\DATABASE\NIST11.L  
 TIC Integration Parameters: LSCINT.P

\*\*\*\*\*  
 Peak Number 1 Isopropyl Alcohol Concentration Rank 1

R.T.	EstConc	Area	Relative to ISTD	R.T.
2.58	5.36 ug/l	83376	Pentafluorobenzene	5.63

Hit#	of	Tentative ID	MW	MolForm	CAS#	Qual
1	5	Isopropyl Alcohol	60	C3H8O	000067-63-0	78
2		Propane, 2-ethoxy-	88	C5H12O	000625-54-7	64
3		Formic acid, 1-methylethyl ester	88	C4H8O2	000625-55-8	40
4		2-Pentanol	88	C5H12O	006032-29-7	9
5		(S)-(+)-2-Pentanol	88	C5H12O	026184-62-3	9



Data Path : Z:\VOASRV\HPCHEM1\MSVOA\_X\DATA\VX070720\  
Data File : VX017205.D  
Acq On : 07 Jul 2020 15:52  
Operator : JC/SP  
Sample : L3159-22  
Misc : 5.0mL/MSVOA\_X/WATER  
ALS Vial : 16 Sample Multiplier: 1

Instrument :  
MSVOA\_X  
ClientSampleId :  
40BR-20200629

Quant Method : Z:\VOASRV\HPCHEM1\MSVOA\_X\METHOD\82X062920W.M  
Quant Title : SW846 8260

TIC Library : C:\DATABASE\NIST11.L  
TIC Integration Parameters: LSCINT.P

TIC Top Hit name	RT	EstConc	Units	Response	--Internal Standard--			
					#	RT	Resp	Conc
Isopropyl Alcohol	2.58	5.4	ug/l	83376	1	5.63	777730	50.0