

Data Path : Z:\VOASRV\HPCHEM1\MSVOA\_X\DATA\VX070819\  
 Data File : VX010703.D  
 Acq On : 08 Jul 2019 18:09  
 Operator : JC/SP  
 Sample : K3664-03  
 Misc : 5.0mL/MSVOA\_X/WATER  
 ALS Vial : 20 Sample Multiplier: 1

Instrument :  
 MSVOA\_X  
 ClientSampled :  
 FL-0579

Manual Integrations  
 APPROVED

MMDadoda  
 7/9/2019 11:11:26 AM

Quant Time: Jul 09 02:15:39 2019  
 Quant Method : Z:\VOASRV\HPCHEM1\MSVOA\_X\METHOD\82X061919W.M  
 Quant Title : SW846 8260  
 QLast Update : Thu Jun 20 03:31:56 2019  
 Response via : Initial Calibration

Internal Standards	R.T.	QIon	Response	Conc	Units	Dev(Min)
1) Pentafluorobenzene	5.67	168	228379	50.00	ug/l	0.00
34) 1,4-Difluorobenzene	6.86	114	354713	50.00	ug/l	0.00
63) Chlorobenzene-d5	10.11	117	325347	50.00	ug/l	0.00
72) 1,4-Dichlorobenzene-d4	12.08	152	165869	50.00	ug/l	0.00

## System Monitoring Compounds

33) 1,2-Dichloroethane-d4	6.06	65	113439	52.98	ug/l	0.00
Spiked Amount	50.000		Recovery	=	105.96%	
35) Dibromofluoromethane	5.50	113	107091	49.34	ug/l	0.00
Spiked Amount	50.000		Recovery	=	98.68%	
50) Toluene-d8	8.71	98	424202	51.09	ug/l	0.00
Spiked Amount	50.000		Recovery	=	102.18%	
62) 4-Bromofluorobenzene	11.13	95	150252	50.12	ug/l	0.00
Spiked Amount	50.000		Recovery	=	100.24%	

## Target Compounds

						Qvalue
16) Acetone	2.44	43	9637	8.980	ug/l	99
25) 2-Butanone	4.69	43	7836	4.978	ug/l	90
31) Cyclohexane	5.58	56	387263	125.208	ug/l	97
39) Methylcyclohexane	7.46	83	647527	174.764	ug/l	98
40) Benzene	6.15	78	55443	6.313	ug/l	99
67) Ethyl Benzene	10.25	91	690087	61.886	ug/l	98
68) m/p-Xylenes	10.36	106	214226	49.581	ug/l	99
69) o-Xylene	10.70	106	7875	1.853	ug/l	94
73) Isopropylbenzene	11.02	105	470731	41.866	ug/l	98
78) n-propylbenzene	11.36	91	806949	65.300	ug/l	99
80) 1,3,5-Trimethylbenzene	11.51	105	33546m	3.619	ug/l	
83) tert-Butylbenzene	11.77	119	9890m	1.063	ug/l	
84) 1,2,4-Trimethylbenzene	11.80	105	2808351	301.562	ug/l	99
85) sec-Butylbenzene	11.94	105	121621	11.134	ug/l	86
86) p-Isopropyltoluene	12.06	119	54285	5.373	ug/l	99
89) n-Butylbenzene	12.38	91	56960m	6.634	ug/l	
95) Naphthalene	13.83	128	365941	31.525	ug/l	99

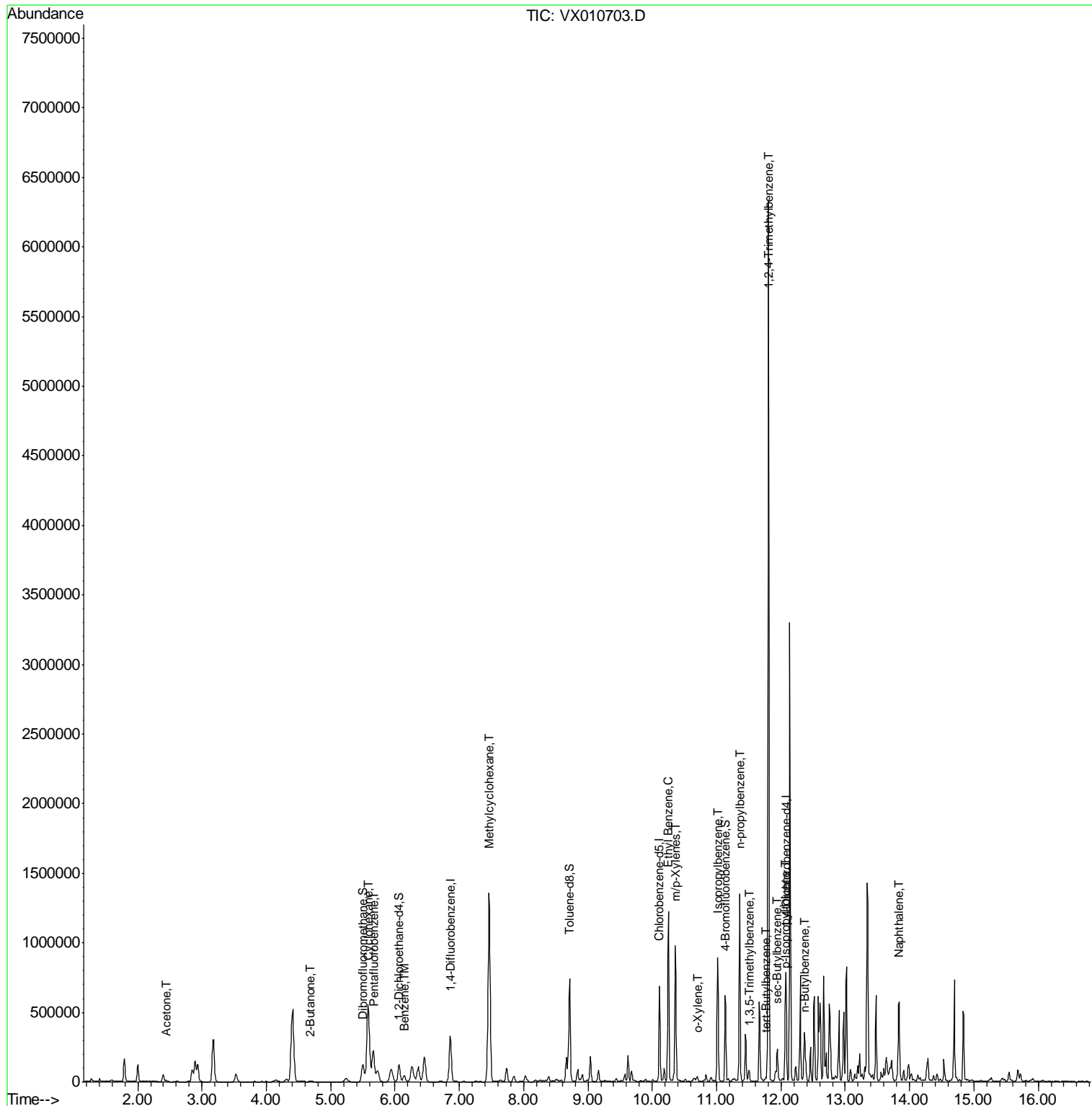
(#) = qualifier out of range (m) = manual integration (+) = signals summed

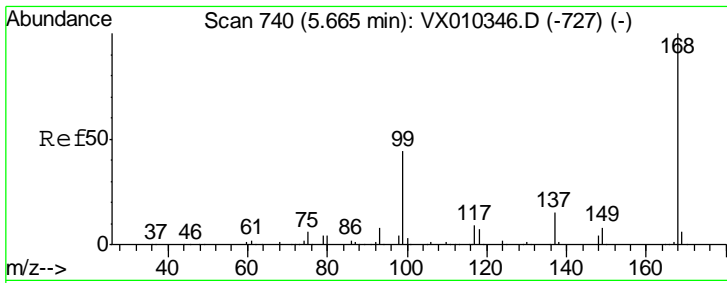
Data Path : Z:\VOASRV\HPCHEM1\MSVOA\_X\DATA\VX070819\  
 Data File : VX010703.D  
 Acq On : 08 Jul 2019 18:09  
 Operator : JC/SP  
 Sample : K3664-03  
 Misc : 5.0mL/MSVOA\_X/WATER  
 ALS Vial : 20 Sample Multiplier: 1

Instrument :  
 MSVOA\_X  
 Client Sampled :  
 FL-0579

Manual Integrations  
 APPROVED  
 MMDadoda  
 7/9/2019 11:11:26 AM

Quant Time: Jul 09 02:15:39 2019  
 Quant Method : Z:\VOASRV\HPCHEM1\MSVOA\_X\METHOD\82X061919W.M  
 Quant Title : SW846 8260  
 QLast Update : Thu Jun 20 03:31:56 2019  
 Response via : Initial Calibration





#1  
 Pentafluorobenzene  
 Concen: 50.000 ug/l  
 RT: 5.67 min Scan# 740  
 Delta R.T. 0.00 min  
 Lab File: VX010703.D  
 Acq: 08 Jul 2019 18:09

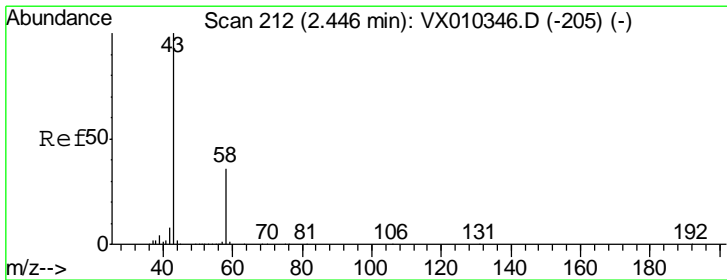
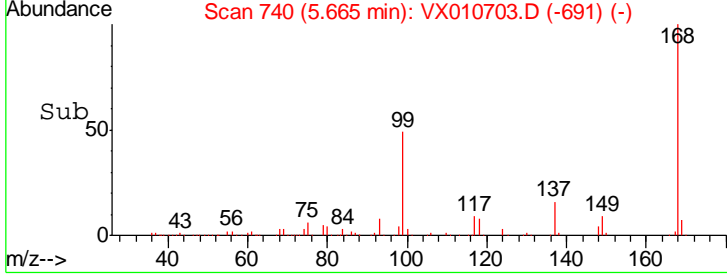
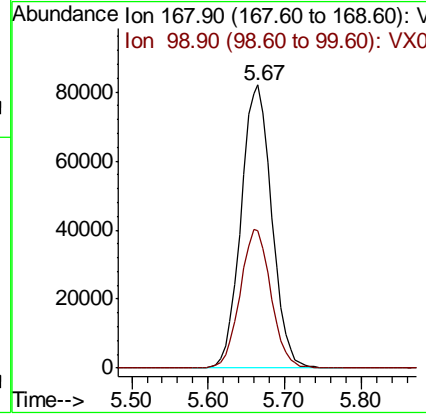
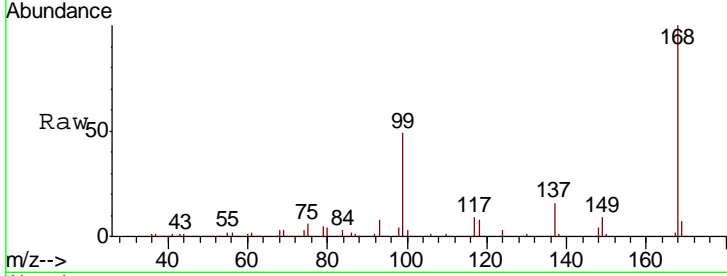
Instrument : MSVOA\_X  
 Client Sampled : FL-0579

Tgt Ion: 168 Resp: 228379

Ion	Ratio	Lower	Upper
168	100		
99	48.5	35.5	53.3

Manual Integrations  
 APPROVED

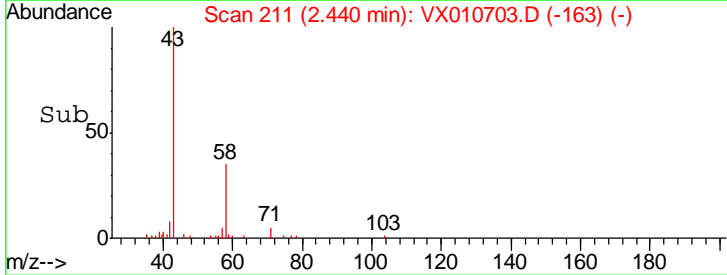
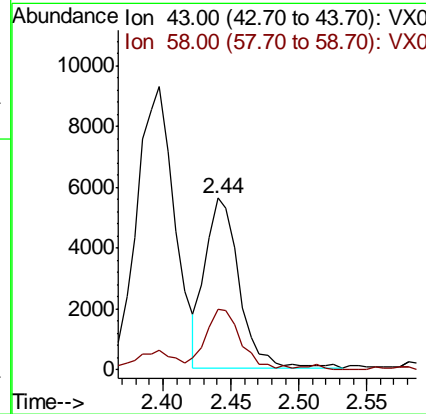
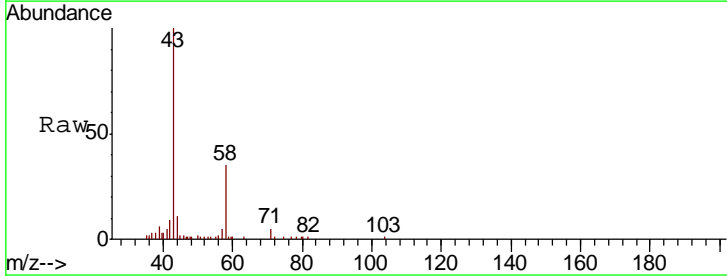
MMDadoda  
 7/9/2019 11:11:26 AM

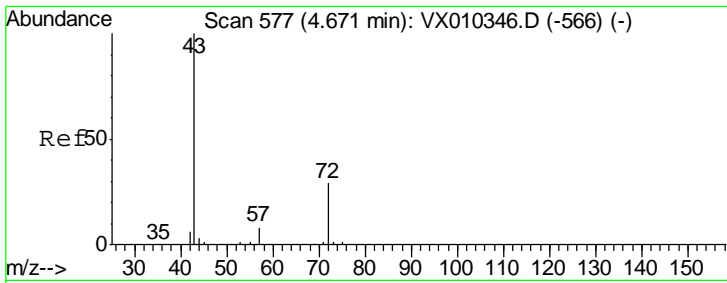


#16  
 Acetone  
 Concen: 8.980 ug/l  
 RT: 2.44 min Scan# 211  
 Delta R.T. -0.01 min  
 Lab File: VX010703.D  
 Acq: 08 Jul 2019 18:09

Tgt Ion: 43 Resp: 9637

Ion	Ratio	Lower	Upper
43	100		
58	35.6	28.9	43.3



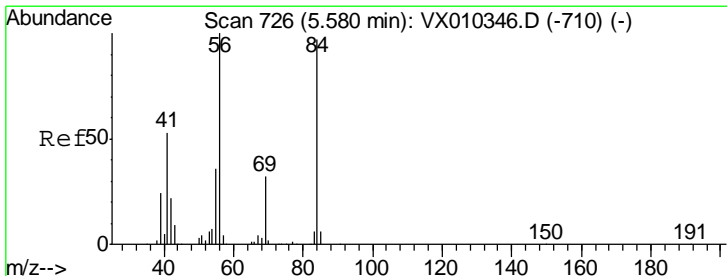
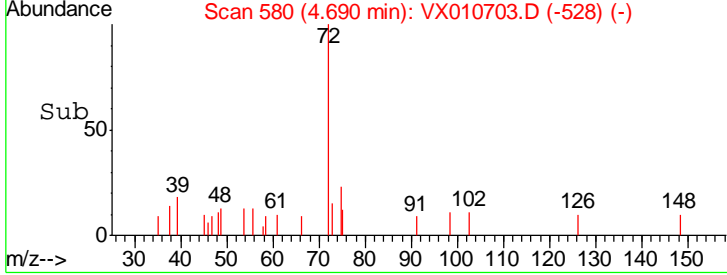
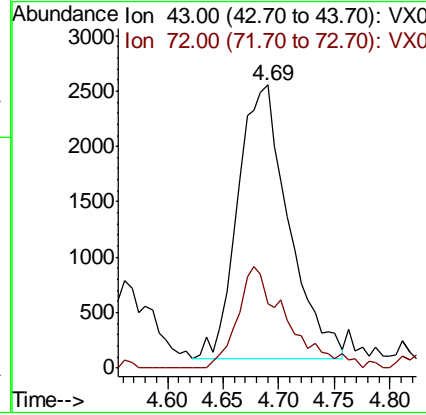
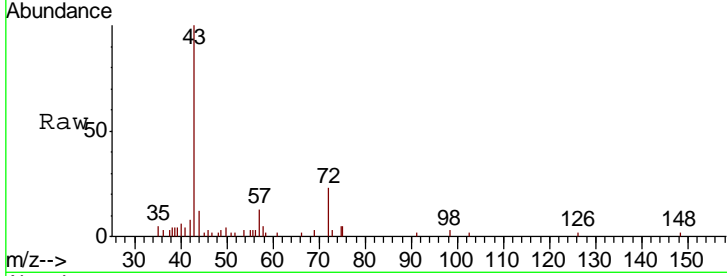


#25  
 2-Butanone  
 Concen: 4.978 ug/l  
 RT: 4.69 min Scan# 580  
 Delta R.T. 0.02 min  
 Lab File: VX010703.D  
 Acq: 08 Jul 2019 18:09

Instrument : MSVOA\_X  
 Client Sampled : FL-0579

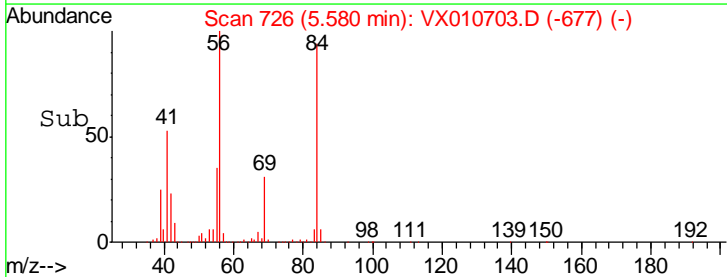
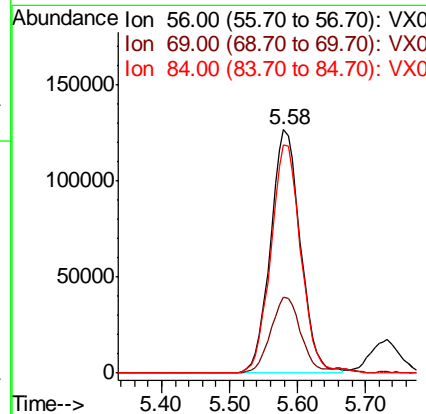
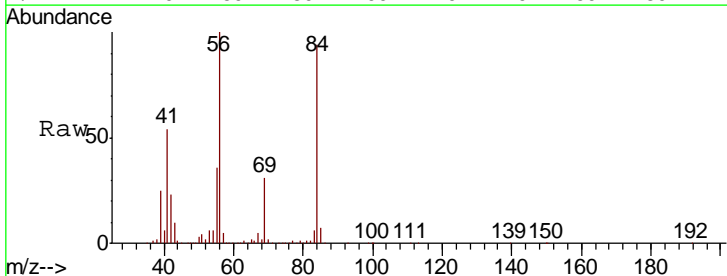
Tgt Ion	Resp	Lower	Upper
43	100		
72	23.7	23.3	34.9

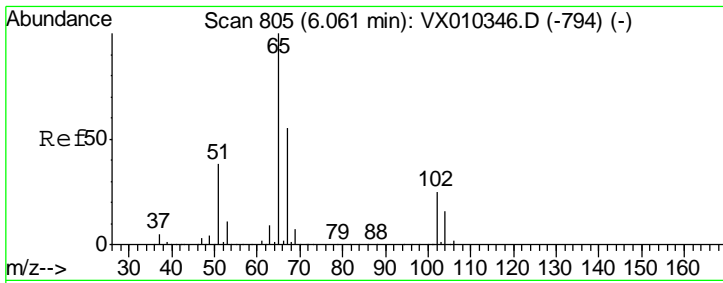
Manual Integrations  
**APPROVED**  
 MMDadoda  
 7/9/2019 11:11:26 AM



#31  
 Cyclohexane  
 Concen: 125.208 ug/l  
 RT: 5.58 min Scan# 726  
 Delta R.T. 0.00 min  
 Lab File: VX010703.D  
 Acq: 08 Jul 2019 18:09

Tgt Ion	Resp	Lower	Upper
56	100		
69	31.2	25.9	38.9
84	93.6	78.0	117.0





#33  
 1,2-Dichloroethane-d4  
 Concen: 52.977 ug/l  
 RT: 6.06 min Scan# 805  
 Delta R.T. 0.00 min  
 Lab File: VX010703.D  
 Acq: 08 Jul 2019 18:09

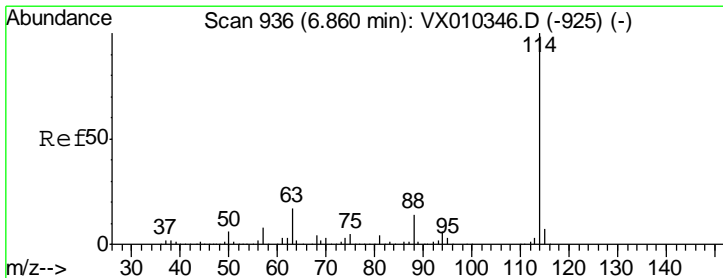
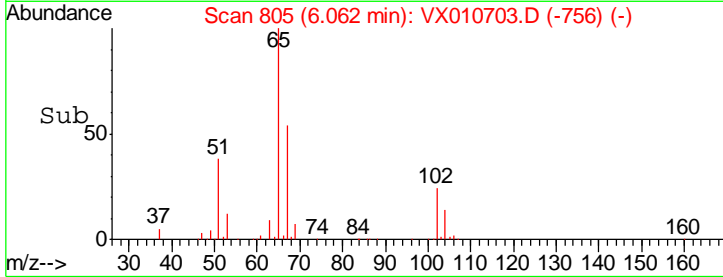
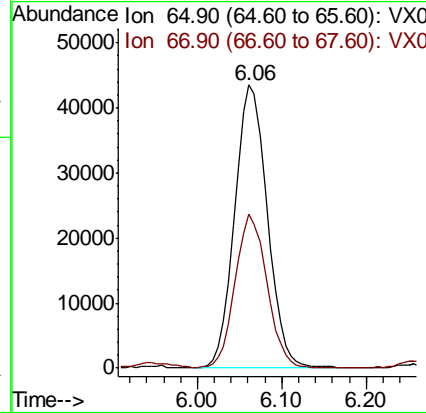
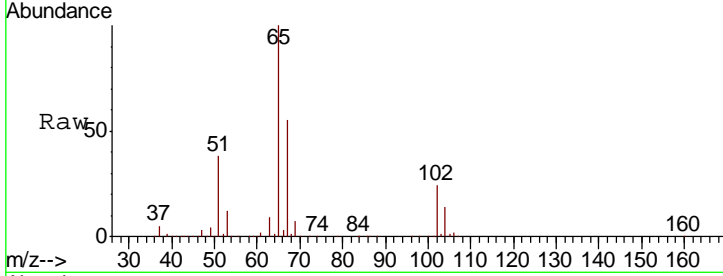
**Instrument :**  
 MSVOA\_X  
**ClientSampled :**  
 FL-0579

Tgt Ion: 65 Resp: 113439

Ion	Ratio	Lower	Upper
65	100		
67	53.1	0.0	110.2

**Manual Integrations**  
**APPROVED**

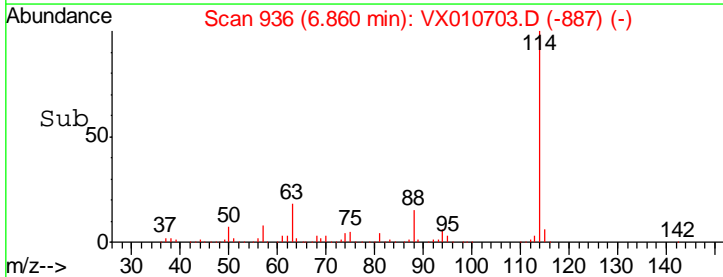
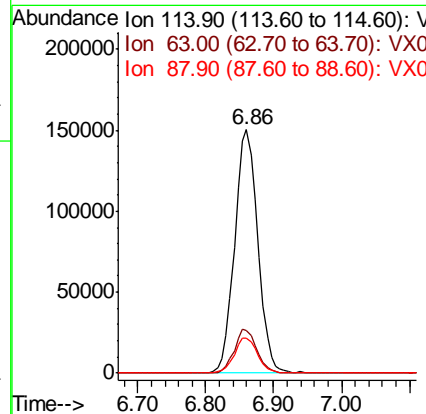
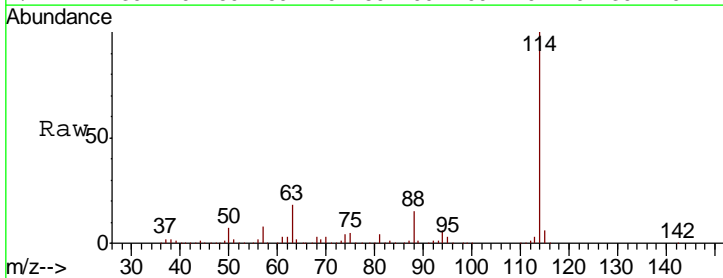
MMDadoda  
 7/9/2019 11:11:26 AM

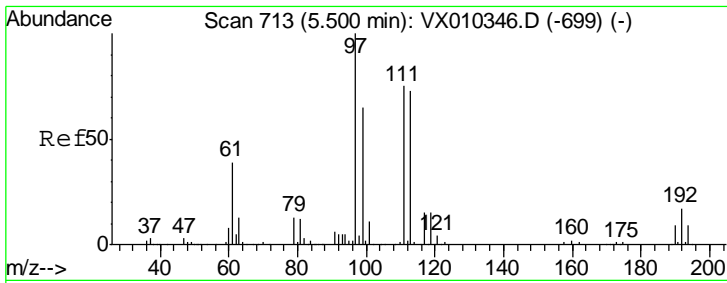


#34  
 1,4-Difluorobenzene  
 Concen: 50.000 ug/l  
 RT: 6.86 min Scan# 936  
 Delta R.T. 0.00 min  
 Lab File: VX010703.D  
 Acq: 08 Jul 2019 18:09

Tgt Ion: 114 Resp: 354713

Ion	Ratio	Lower	Upper
114	100		
63	17.7	0.0	33.8
88	14.6	0.0	27.6





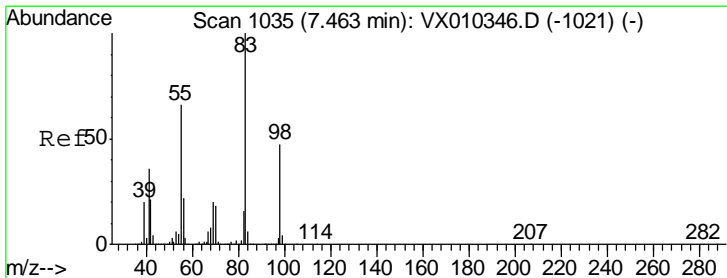
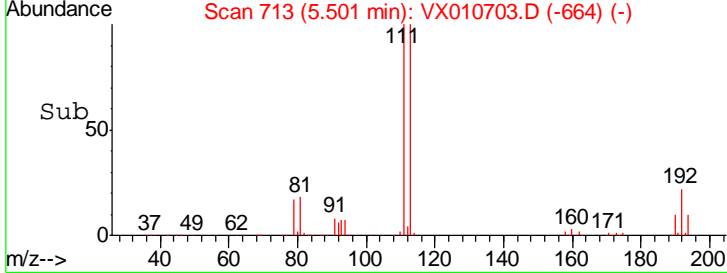
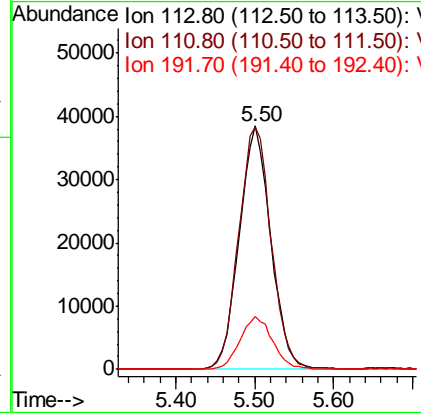
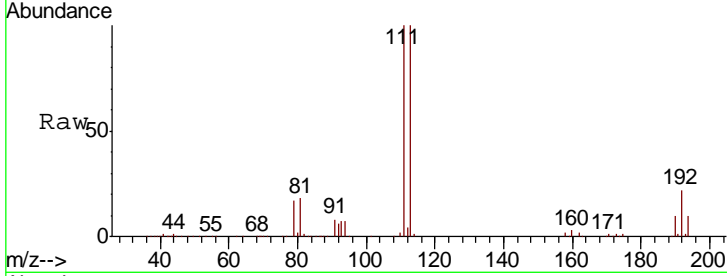
#35  
 Dibromofluoromethane  
 Concen: 49.345 ug/l  
 RT: 5.50 min Scan# 713  
 Delta R.T. 0.00 min  
 Lab File: VX010703.D  
 Acq: 08 Jul 2019 18:09

Instrument :  
 MSVOA\_X  
 ClientSampled :  
 FL-0579

Tgt Ion	Resp	Lower	Upper
113	107091		
111	102.7	81.2	121.8
192	22.2	18.6	27.8

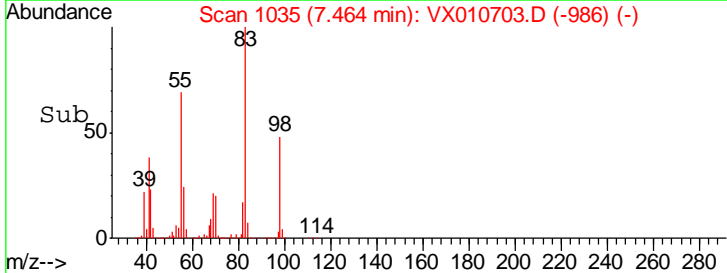
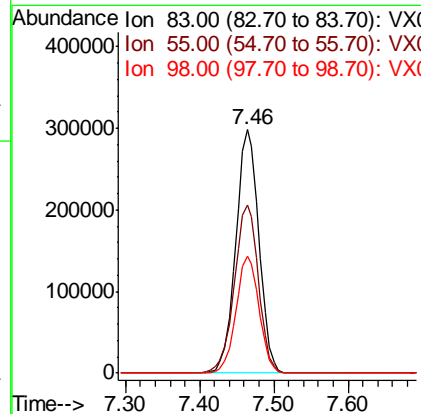
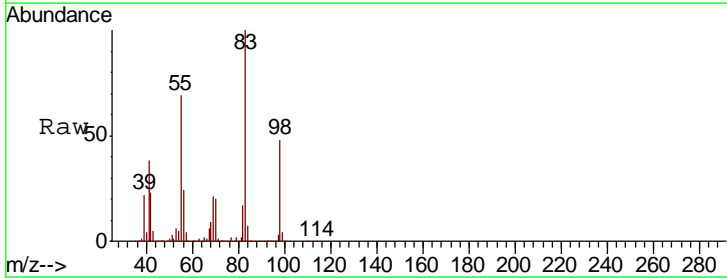
Manual Integrations  
 APPROVED

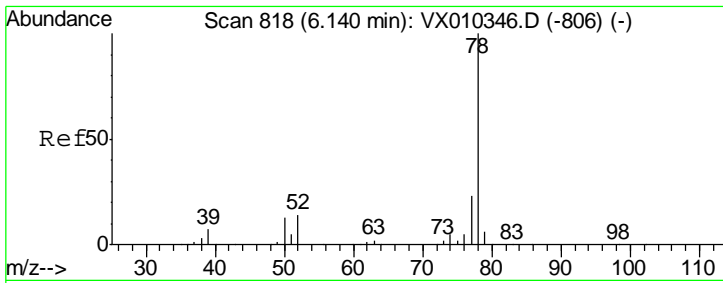
MMDadoda  
 7/9/2019 11:11:26 AM



#39  
 Methylcyclohexane  
 Concen: 174.764 ug/l  
 RT: 7.46 min Scan# 1035  
 Delta R.T. 0.00 min  
 Lab File: VX010703.D  
 Acq: 08 Jul 2019 18:09

Tgt Ion	Resp	Lower	Upper
83	647527		
55	68.8	53.0	79.6
98	48.1	37.8	56.8





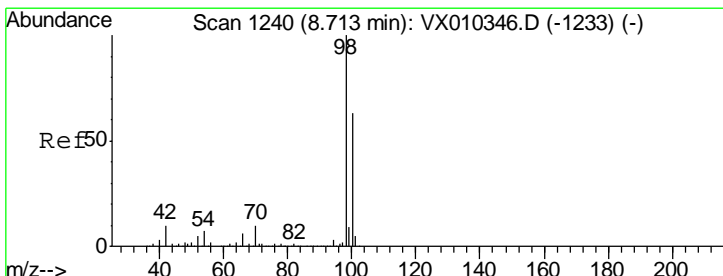
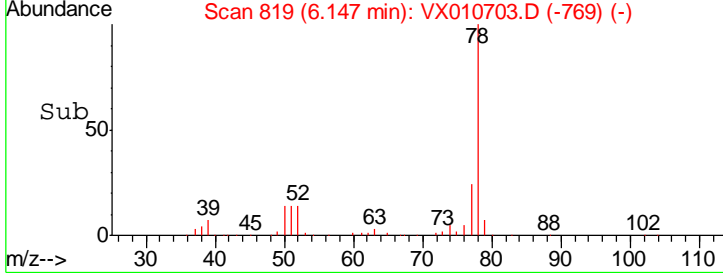
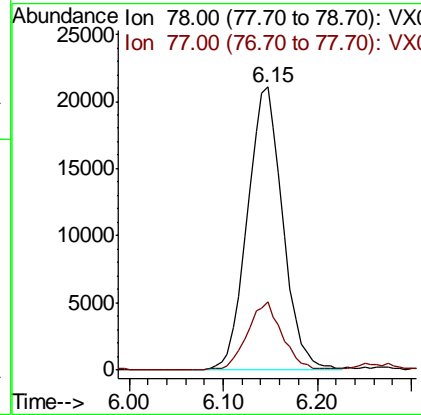
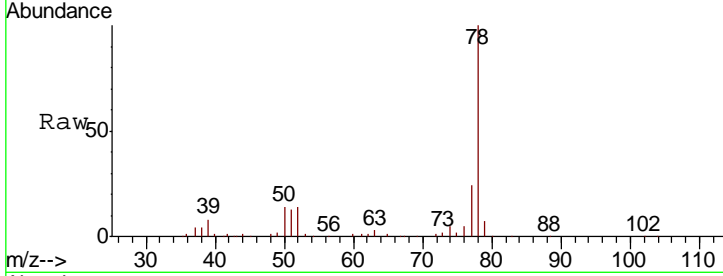
#40  
Benzene  
Concen: 6.313 ug/l  
RT: 6.15 min Scan# 819  
Delta R.T. 0.01 min  
Lab File: VX010703.D  
Acq: 08 Jul 2019 18:09

Instrument : MSVOA\_X  
ClientSampled : FL-0579

Tgt Ion: 78 Resp: 55443

Ion	Ratio	Lower	Upper
78	100		
77	24.0	18.6	28.0

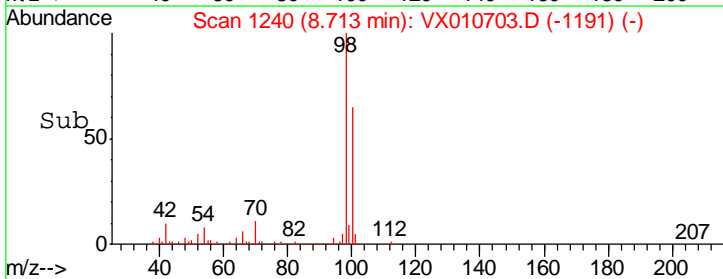
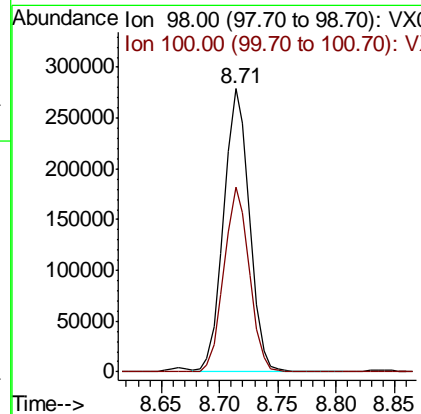
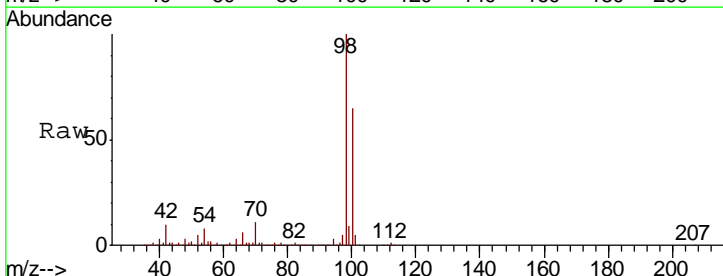
Manual Integrations  
**APPROVED**  
MMDadoda  
7/9/2019 11:11:26 AM

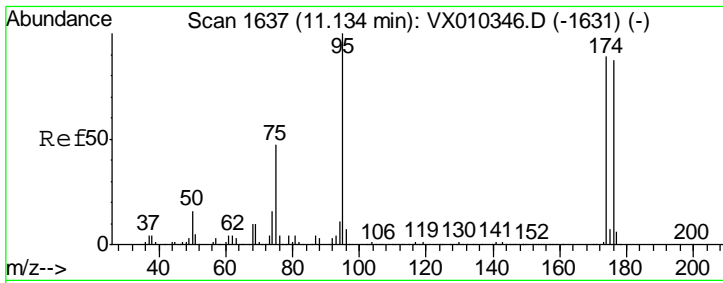


#50  
Toluene-d8  
Concen: 51.090 ug/l  
RT: 8.71 min Scan# 1240  
Delta R.T. 0.00 min  
Lab File: VX010703.D  
Acq: 08 Jul 2019 18:09

Tgt Ion: 98 Resp: 424202

Ion	Ratio	Lower	Upper
98	100		
100	64.5	51.6	77.4



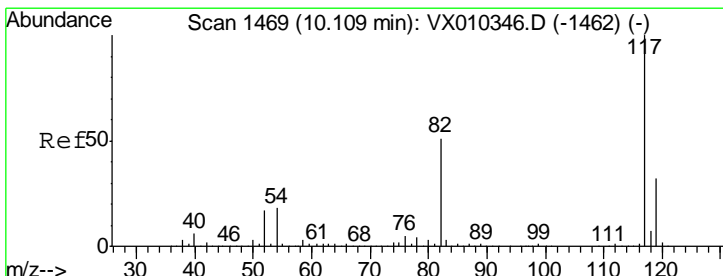
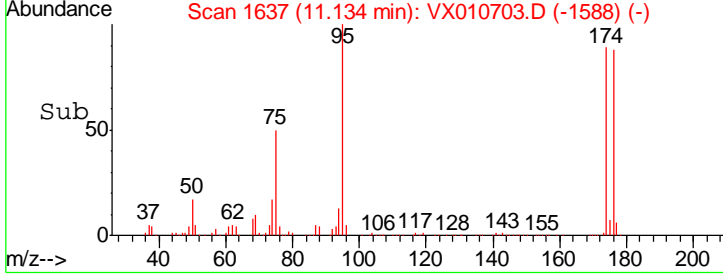
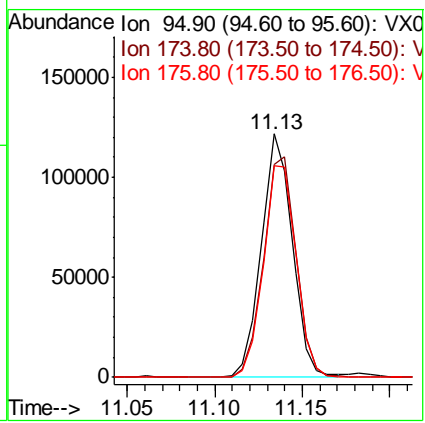
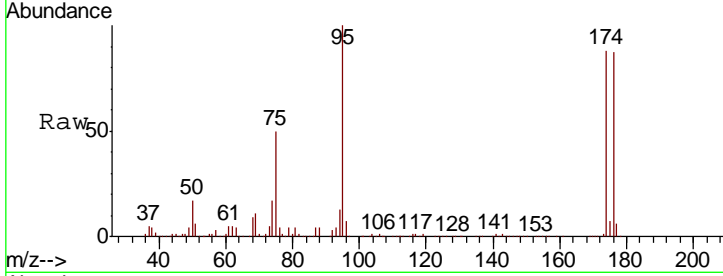


#62  
 4-Bromofluorobenzene  
 Concen: 50.124 ug/l  
 RT: 11.13 min Scan# 1637  
 Delta R.T. 0.00 min  
 Lab File: VX010703.D  
 Acq: 08 Jul 2019 18:09

Instrument : MSVOA\_X  
 Client Sampled : FL-0579

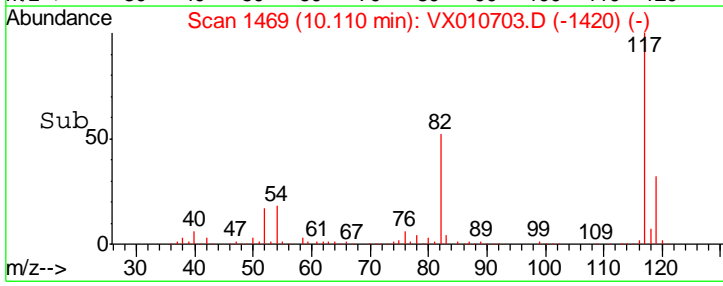
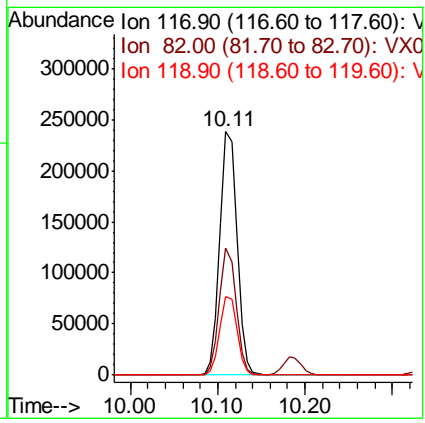
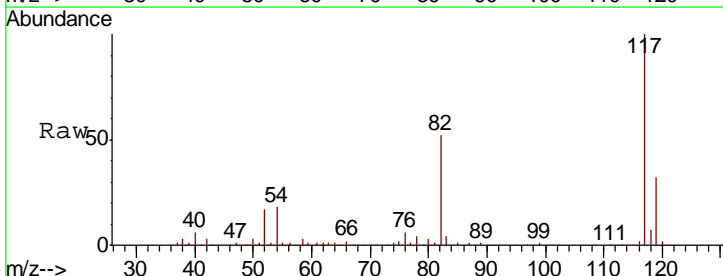
Tgt Ion	Resp	Lower	Upper
95	150252		
174	95.1	0.0	187.6
176	92.1	0.0	184.0

Manual Integrations  
**APPROVED**  
 MMDadoda  
 7/9/2019 11:11:26 AM

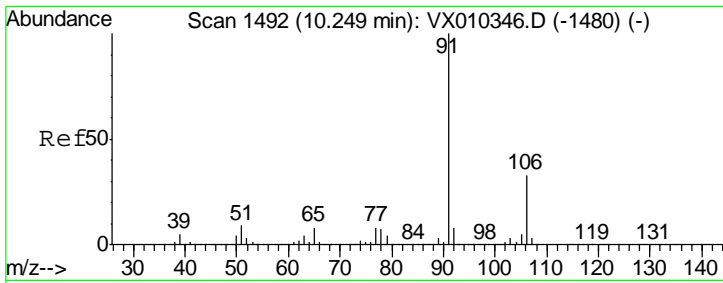


#63  
 Chlorobenzene-d5  
 Concen: 50.000 ug/l  
 RT: 10.11 min Scan# 1469  
 Delta R.T. 0.00 min  
 Lab File: VX010703.D  
 Acq: 08 Jul 2019 18:09

Tgt Ion	Resp	Lower	Upper
117	325347		
82	52.2	41.2	61.8
119	32.1	25.5	38.3





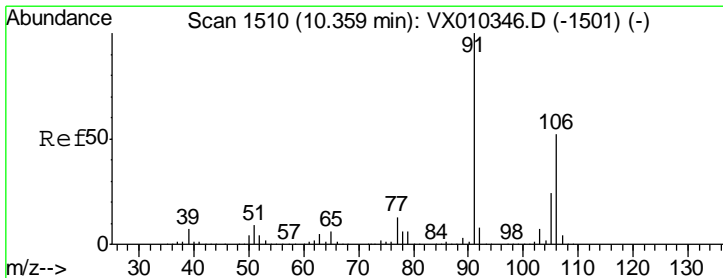
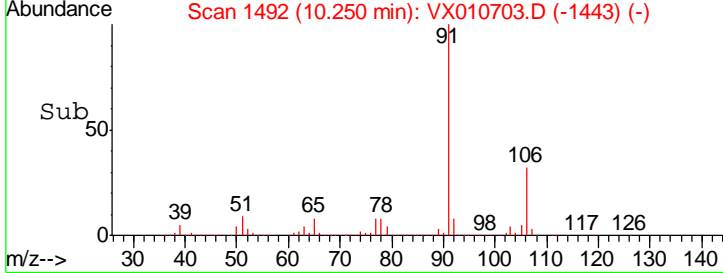
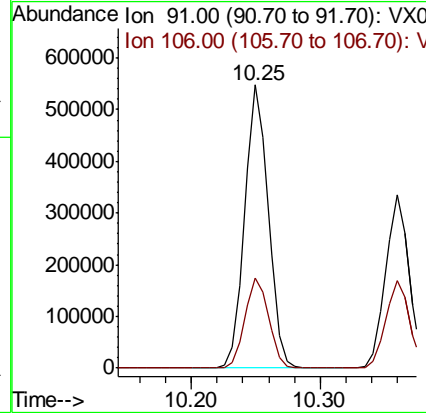
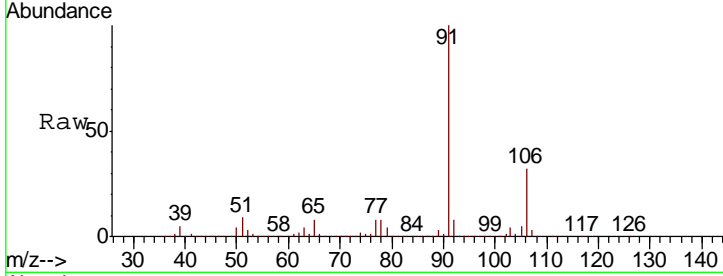


#67  
 Ethyl Benzene  
 Concen: 61.886 ug/l  
 RT: 10.25 min Scan# 1492  
 Delta R.T. 0.00 min  
 Lab File: VX010703.D  
 Acq: 08 Jul 2019 18:09

Instrument : MSVOA\_X  
 ClientSampled : FL-0579

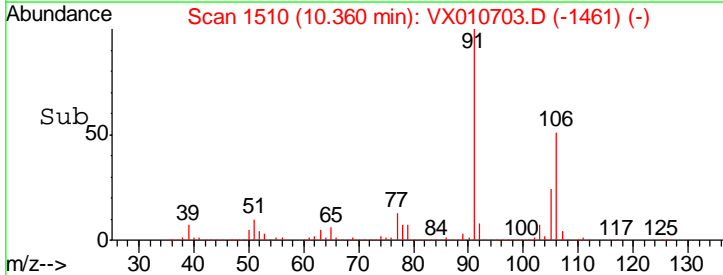
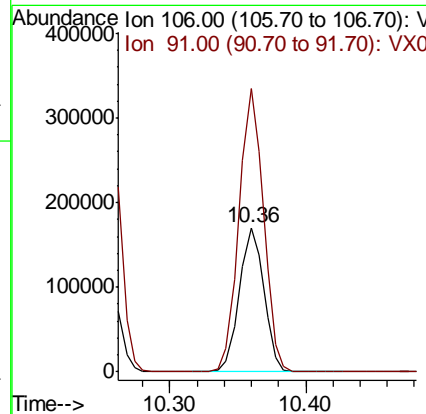
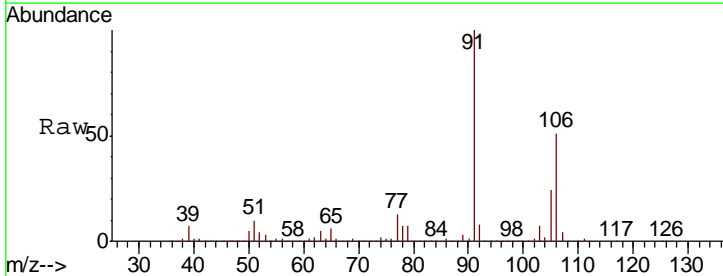
Tgt Ion: 91 Resp: 690087  
 Ion Ratio Lower Upper  
 91 100  
 106 31.7 26.2 39.2

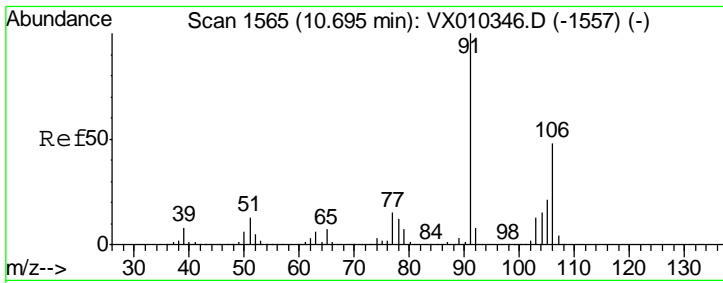
Manual Integrations  
**APPROVED**  
 MMDadoda  
 7/9/2019 11:11:26 AM



#68  
 m/p-Xylenes  
 Concen: 49.581 ug/l  
 RT: 10.36 min Scan# 1510  
 Delta R.T. 0.00 min  
 Lab File: VX010703.D  
 Acq: 08 Jul 2019 18:09

Tgt Ion: 106 Resp: 214226  
 Ion Ratio Lower Upper  
 106 100  
 91 196.1 155.3 232.9



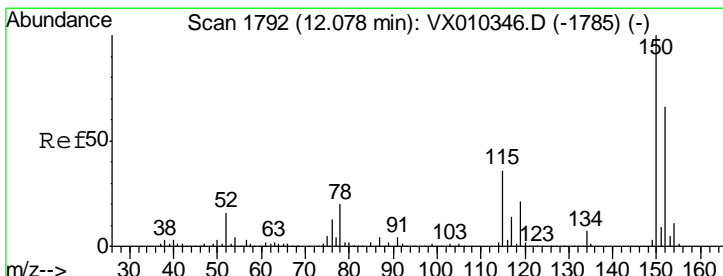
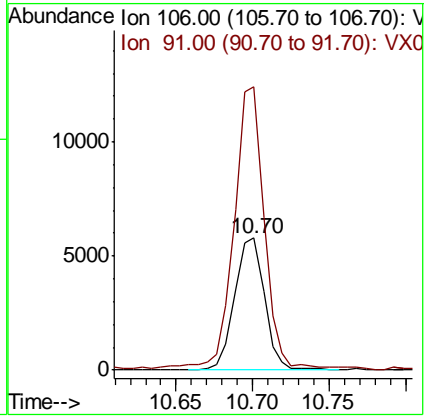
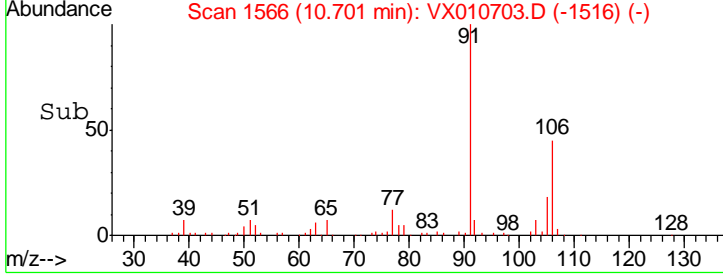
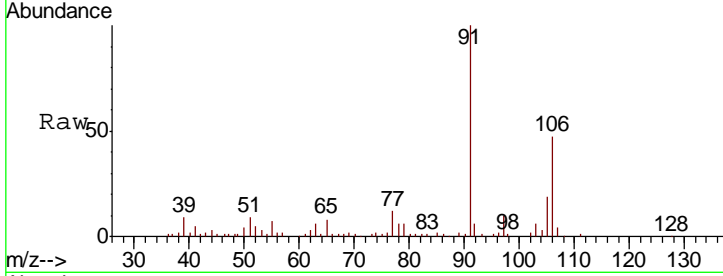


#69  
 o-Xylene  
 Concen: 1.853 ug/l  
 RT: 10.70 min Scan# 1566  
 Delta R.T. 0.01 min  
 Lab File: VX010703.D  
 Acq: 08 Jul 2019 18:09

Instrument : MSVOA\_X  
 ClientSampled : FL-0579

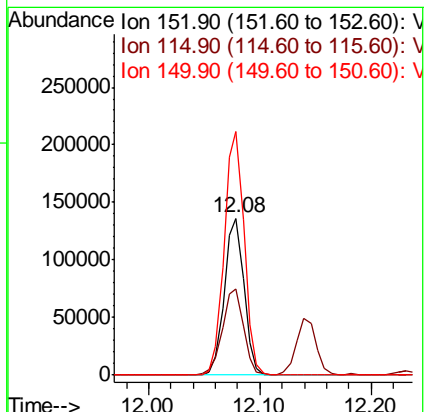
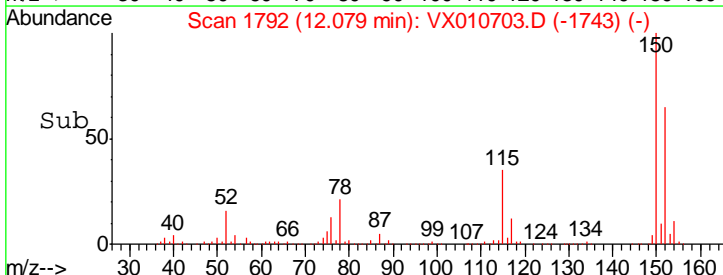
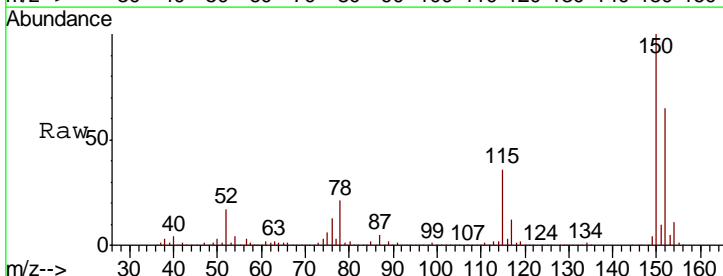
Tgt Ion	Resp	Lower	Upper
106	7875		
106	100		
91	214.8	102.7	308.1

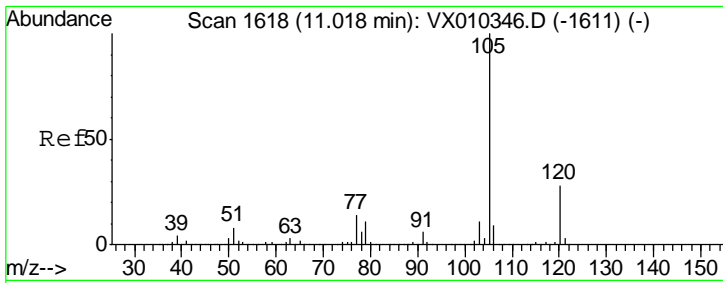
Manual Integrations  
**APPROVED**  
 MMDadoda  
 7/9/2019 11:11:26 AM



#72  
 1,4-Dichlorobenzene-d4  
 Concen: 50.000 ug/l  
 RT: 12.08 min Scan# 1792  
 Delta R.T. 0.00 min  
 Lab File: VX010703.D  
 Acq: 08 Jul 2019 18:09

Tgt Ion	Resp	Lower	Upper
152	165869		
152	100		
115	58.0	38.6	115.7
150	157.6	0.0	347.4



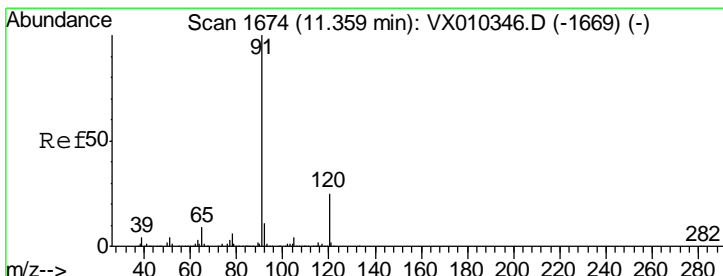
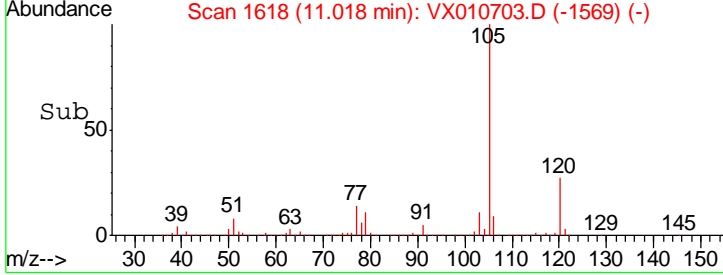
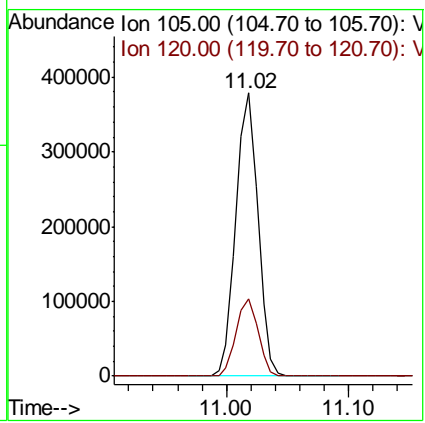
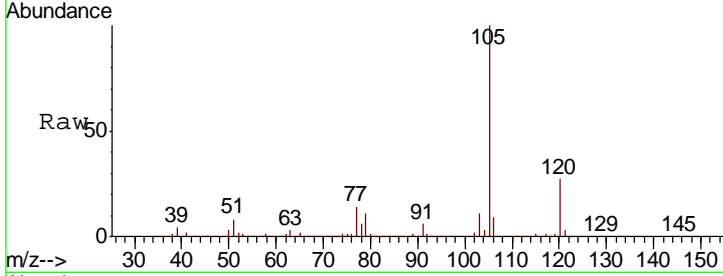


#73  
 Isopropylbenzene  
 Concen: 41.866 ug/l  
 RT: 11.02 min Scan# 1618  
 Delta R.T. 0.00 min  
 Lab File: VX010703.D  
 Acq: 08 Jul 2019 18:09

Instrument : MSVOA\_X  
 ClientSampled : FL-0579

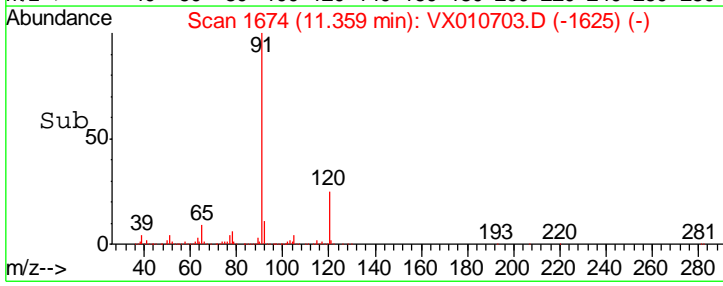
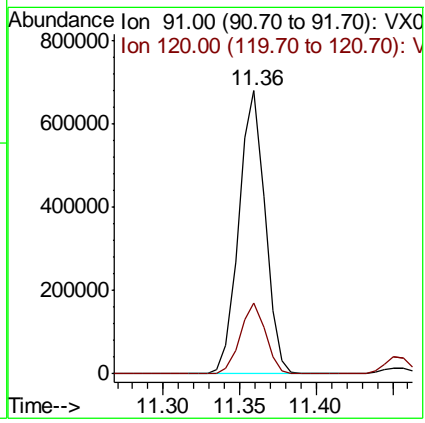
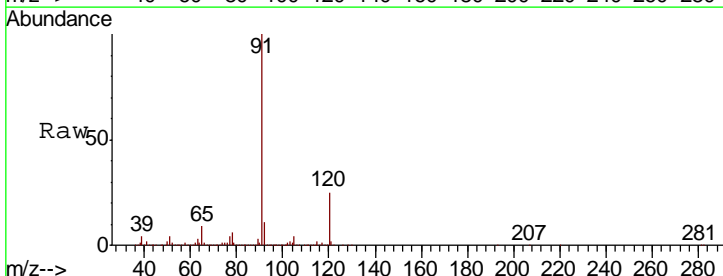
Tgt Ion	Resp	Lower	Upper
105	470731	100	
120	27.4	14.1	42.4

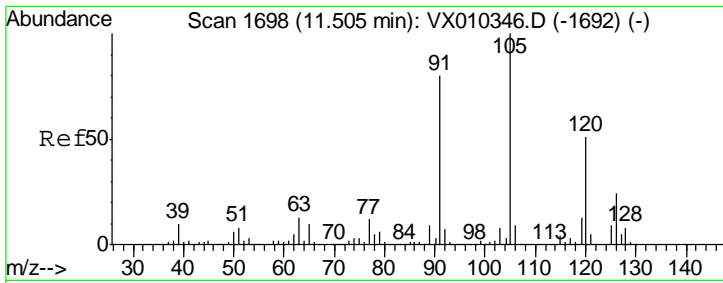
Manual Integrations  
**APPROVED**  
 MMDadoda  
 7/9/2019 11:11:26 AM



#78  
 n-propylbenzene  
 Concen: 65.300 ug/l  
 RT: 11.36 min Scan# 1674  
 Delta R.T. 0.00 min  
 Lab File: VX010703.D  
 Acq: 08 Jul 2019 18:09

Tgt Ion	Resp	Lower	Upper
91	806949	100	
120	24.3	12.4	37.4



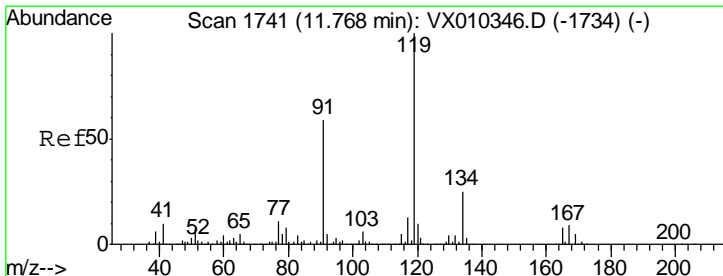
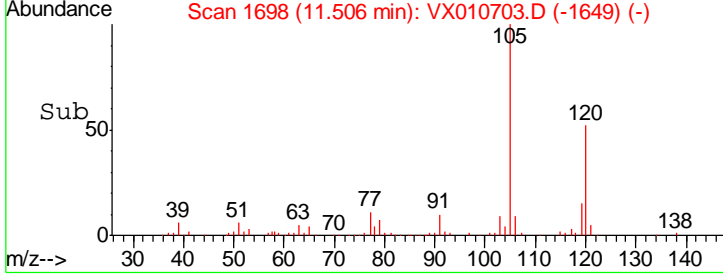
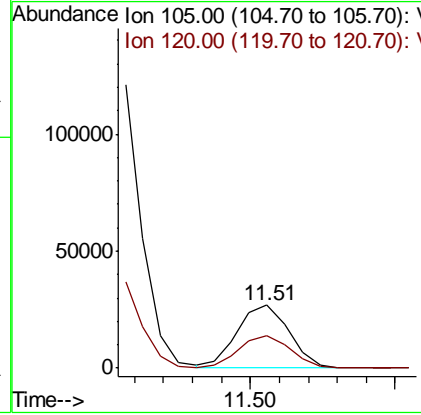
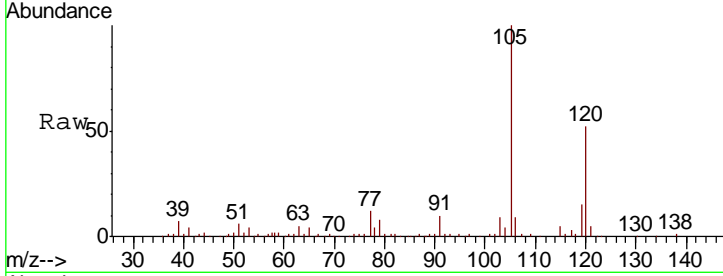


#80  
 1,3,5-Trimethylbenzene  
 Concen: 3.619 ug/l m  
 RT: 11.51 min Scan# 1698  
 Delta R.T. 0.00 min  
 Lab File: VX010703.D  
 Acq: 08 Jul 2019 18:09

Instrument : MSVOA\_X  
 ClientSampled : FL-0579

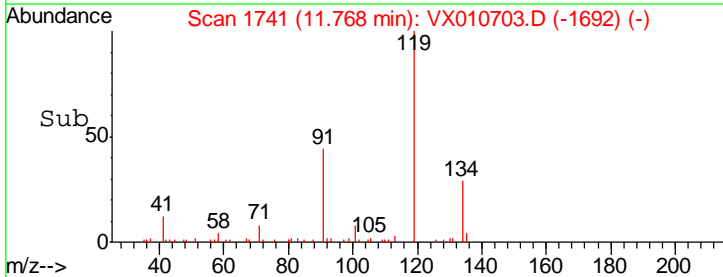
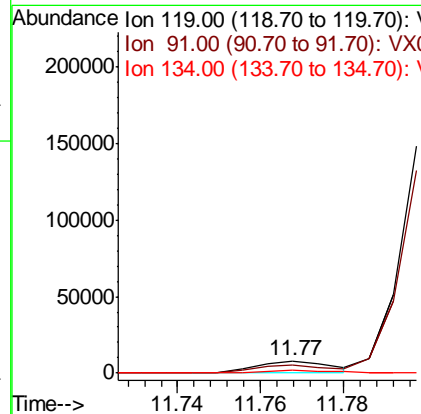
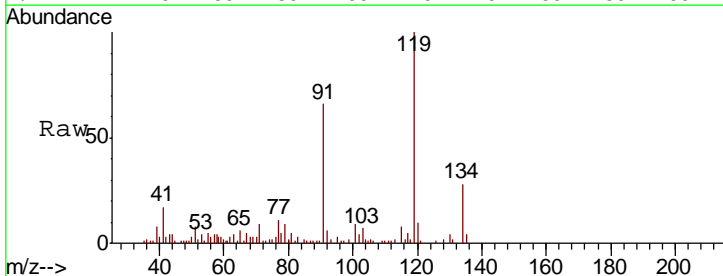
Tgt Ion:105 Resp: 33546  
 Ion Ratio Lower Upper  
 105 100  
 120 149.8 25.2 75.6#

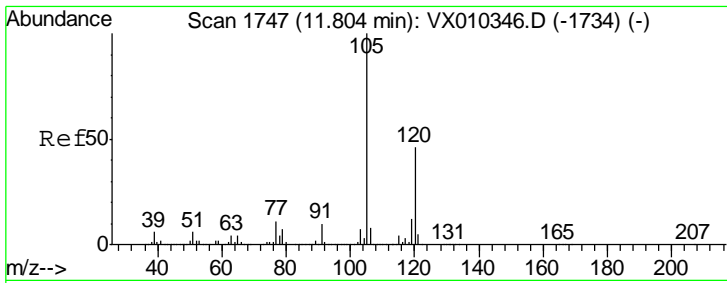
Manual Integrations  
**APPROVED**  
 MMDadoda  
 7/9/2019 11:11:26 AM



#83  
 tert-Butylbenzene  
 Concen: 1.063 ug/l m  
 RT: 11.77 min Scan# 1741  
 Delta R.T. 0.00 min  
 Lab File: VX010703.D  
 Acq: 08 Jul 2019 18:09

Tgt Ion:119 Resp: 9890  
 Ion Ratio Lower Upper  
 119 100  
 91 2995.9 27.6 82.7#  
 134 0.0 11.8 35.4#



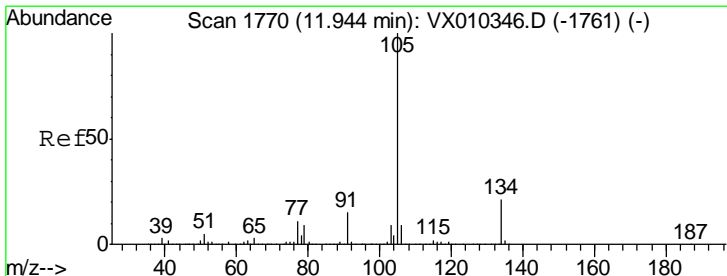
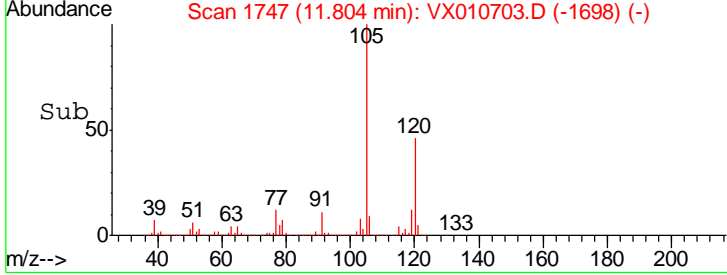
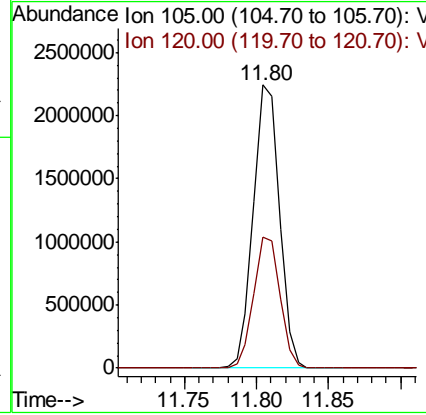
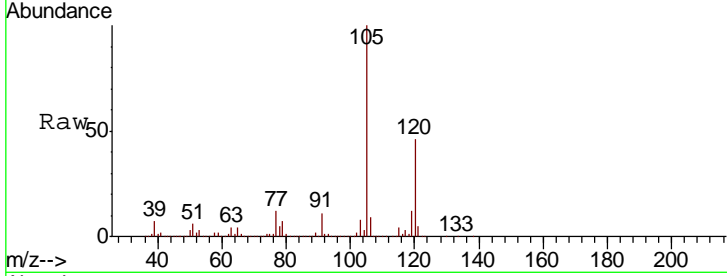


#84  
 1,2,4-Trimethylbenzene  
 Concen: 301.562 ug/l  
 RT: 11.80 min Scan# 1747  
 Delta R.T. 0.00 min  
 Lab File: VX010703.D  
 Acq: 08 Jul 2019 18:09

Instrument : MSVOA\_X  
 ClientSampled : FL-0579

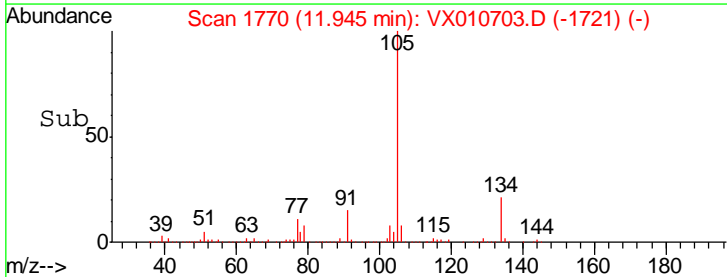
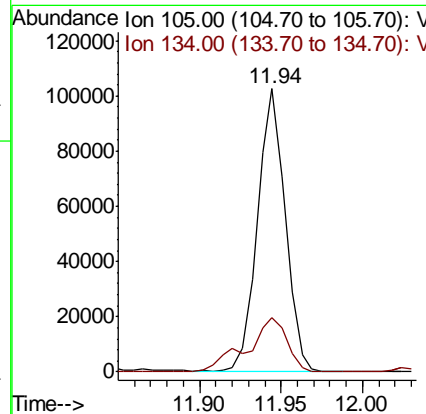
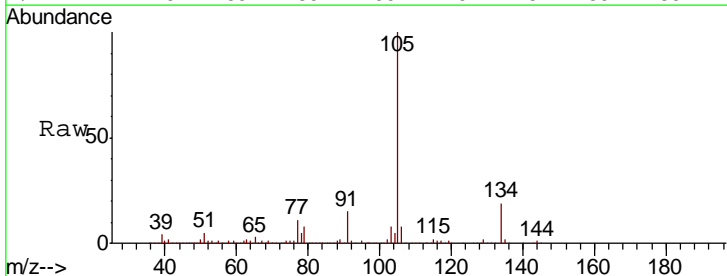
Tgt Ion	Resp	Lower	Upper
105	100		
120	46.7	23.1	69.2

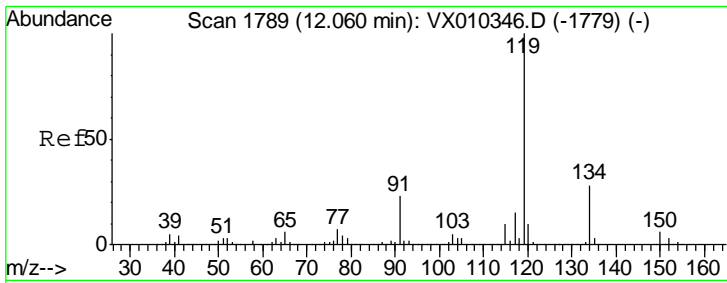
Manual Integrations  
**APPROVED**  
 MMDadoda  
 7/9/2019 11:11:26 AM



#85  
 sec-Butylbenzene  
 Concen: 11.134 ug/l  
 RT: 11.94 min Scan# 1770  
 Delta R.T. 0.00 min  
 Lab File: VX010703.D  
 Acq: 08 Jul 2019 18:09

Tgt Ion	Resp	Lower	Upper
105	100		
134	28.1	10.7	31.9





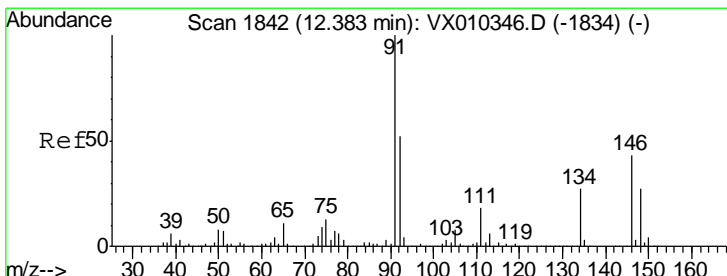
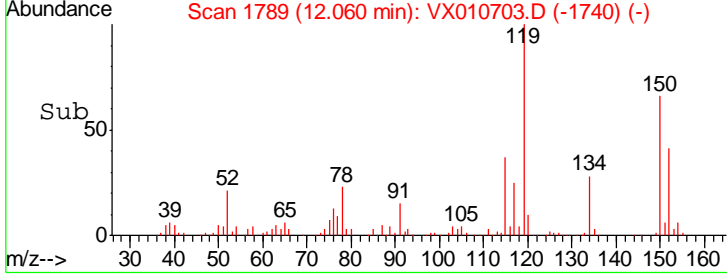
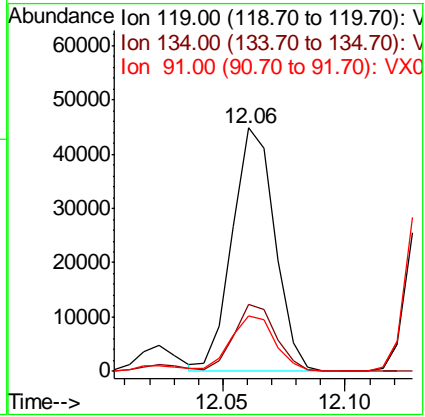
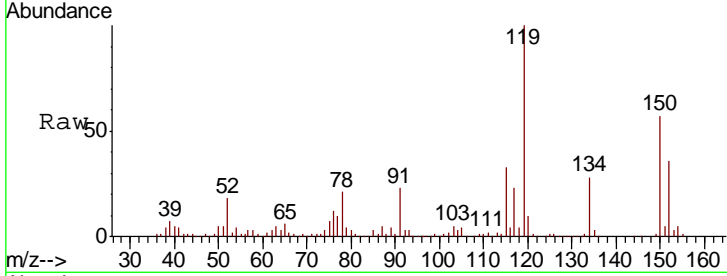
#86  
 p-Isopropyltoluene  
 Concen: 5.373 ug/l  
 RT: 12.06 min Scan# 1789  
 Delta R.T. 0.00 min  
 Lab File: VX010703.D  
 Acq: 08 Jul 2019 18:09

Instrument : MSVOA\_X  
 ClientSampled : FL-0579

Tgt Ion	Resp	Lower	Upper
119	54285		
134	27.1	13.7	41.1
91	23.6	11.3	33.8

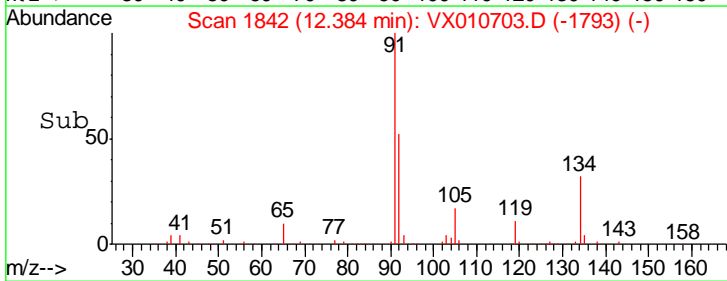
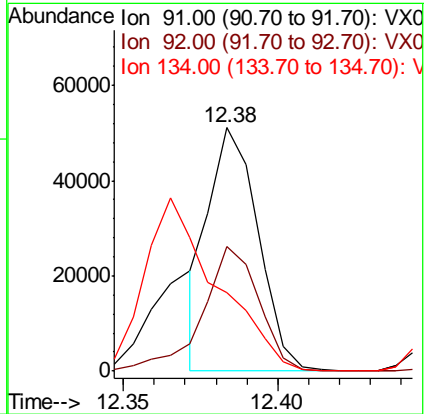
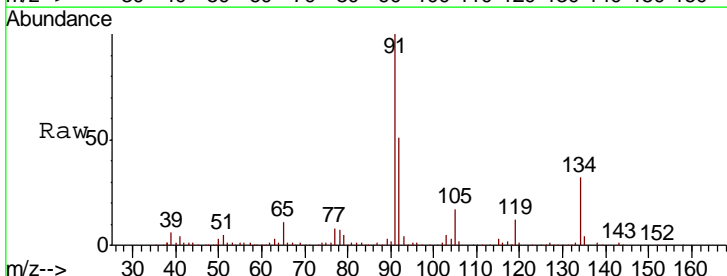
Manual Integrations  
 APPROVED

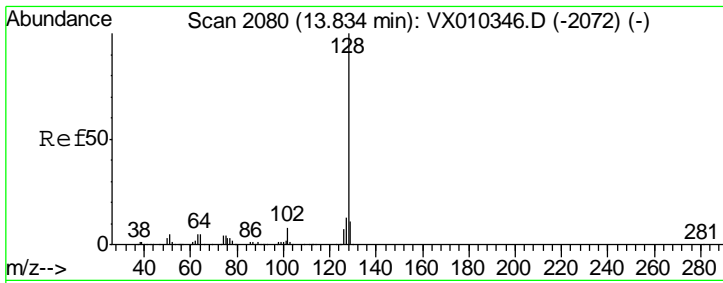
MMDadoda  
 7/9/2019 11:11:26 AM



#89  
 n-Butylbenzene  
 Concen: 6.634 ug/l m  
 RT: 12.38 min Scan# 1842  
 Delta R.T. 0.00 min  
 Lab File: VX010703.D  
 Acq: 08 Jul 2019 18:09

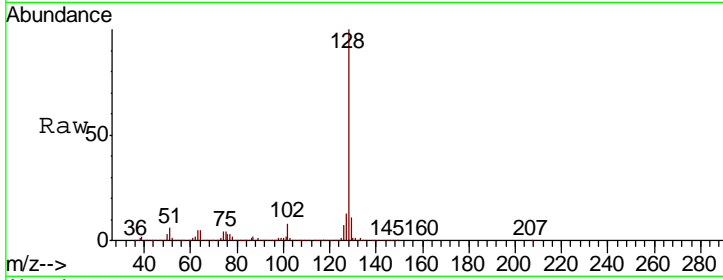
Tgt Ion	Resp	Lower	Upper
91	56960		
92	58.6	26.2	78.5
134	104.1	14.1	42.4#





#95  
 Naphthalene  
 Concen: 31.525 ug/l  
 RT: 13.83 min Scan# 2080  
 Delta R.T. 0.00 min  
 Lab File: VX010703.D  
 Acq: 08 Jul 2019 18:09

Instrument : MSVOA\_X  
 ClientSampled : FL-0579



Tgt Ion	Resp	Lower	Upper
128	100		
127	13.4	10.2	15.4
129	11.6	8.9	13.3

Manual Integrations  
**APPROVED**  
 MMDadoda  
 7/9/2019 11:11:26 AM

