

Data File : VX017256.D
 Acq On : 08 Jul 2020 15:30
 Operator : JC/SP
 Sample : L3239-02
 Misc : 5.0mL/MSVOA_X/WATER
 ALS Vial : 14 Sample Multiplier: 1

Instrument :
 MSVOA_X
 ClientSampleId :
 OUTFALL001-200707

Quant Time: Jul 09 02:32:00 2020
 Quant Method : Z:\VOASRV\HPCHEM1\MSVOA_X\METHOD\82X062920W.M
 Quant Title : SW846 8260
 QLast Update : Mon Jun 29 17:10:38 2020
 Response via : Initial Calibration

| Internal Standards | R.T. | QIon | Response | Conc | Units | Dev(Min) |
|----------------------------|-------|------|----------|-------|-------|----------|
| 1) Pentafluorobenzene | 5.63 | 168 | 255024 | 50.00 | ug/l | 0.00 |
| 34) 1,4-Difluorobenzene | 6.83 | 114 | 427904 | 50.00 | ug/l | 0.00 |
| 63) Chlorobenzene-d5 | 10.10 | 117 | 443218 | 50.00 | ug/l | 0.00 |
| 72) 1,4-Dichlorobenzene-d4 | 12.06 | 152 | 229243 | 50.00 | ug/l | 0.00 |

System Monitoring Compounds

| | | | | | | |
|---------------------------|--------|-----|----------|-----------|------|------|
| 33) 1,2-Dichloroethane-d4 | 6.04 | 65 | 167635 | 53.32 | ug/l | 0.00 |
| Spiked Amount | 50.000 | | Recovery | = 106.64% | | |
| 35) Dibromofluoromethane | 5.46 | 113 | 145021 | 53.58 | ug/l | 0.00 |
| Spiked Amount | 50.000 | | Recovery | = 107.16% | | |
| 50) Toluene-d8 | 8.70 | 98 | 520962 | 52.05 | ug/l | 0.00 |
| Spiked Amount | 50.000 | | Recovery | = 104.10% | | |
| 62) 4-Bromofluorobenzene | 11.12 | 95 | 214621 | 54.85 | ug/l | 0.00 |
| Spiked Amount | 50.000 | | Recovery | = 109.70% | | |

Target Compounds

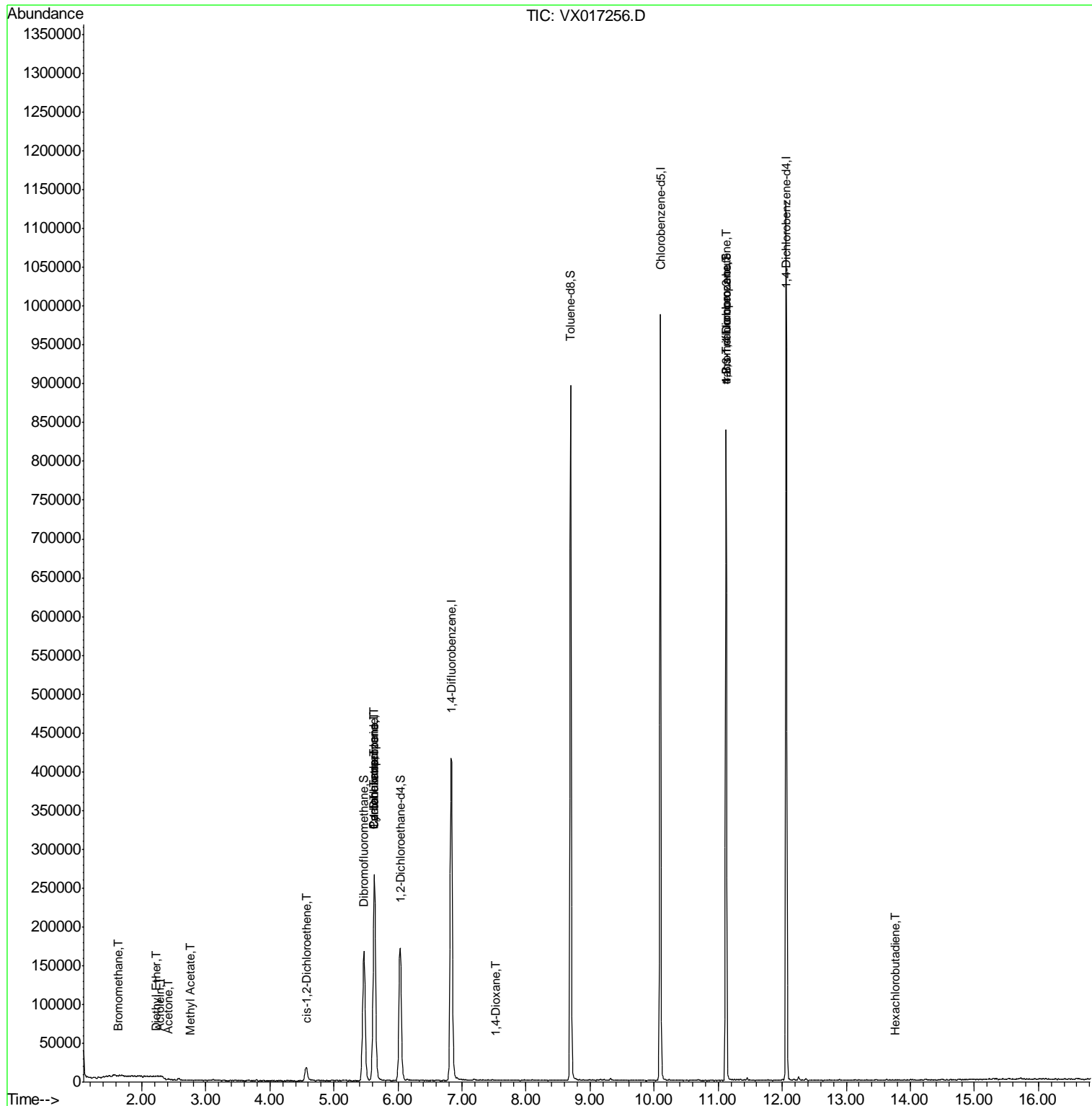
| | | | | | | Qvalue |
|--------------------------------|-------|-----|--------|-----------|--------|--------|
| 5) Bromomethane | 1.64 | 94 | 408 | 0.279 | ug/l # | 21 |
| 8) Diethyl Ether | 2.23 | 74 | 148 | 0.472 | ug/l | 61 |
| 13) Acrolein | 2.29 | 56 | 363 | 1.012 | ug/l # | 80 |
| 16) Acetone | 2.42 | 43 | 1362 | 1.158 | ug/l # | 74 |
| 18) Methyl Acetate | 2.75 | 43 | 688 | 0.224 | ug/l # | 90 |
| 20) Methylene Chloride | 2.84 | 84 | 229 | Below Cal | # | 49 |
| 27) cis-1,2-Dichloroethene | 4.56 | 96 | 11715 | 3.693 | ug/l | 87 |
| 31) Cyclohexane | 5.63 | 56 | 5220 | 1.230 | ug/l # | 1 |
| 36) 1,1-Dichloropropene | 5.63 | 75 | 18884 | 4.669 | ug/l # | 50 |
| 38) Carbon Tetrachloride | 5.63 | 117 | 25211 | 5.660 | ug/l # | 17 |
| 44) Trichloroethene | 7.19 | 130 | 527 | Below Cal | | 70 |
| 49) 1,4-Dioxane | 7.52 | 88 | 23 | 0.313 | ug/l # | 1 |
| 76) 1,2,3-Trichloropropane | 11.12 | 75 | 106096 | 23.535 | ug/l # | 37 |
| 81) trans-1,4-Dichloro-2-buten | 11.12 | 75 | 106096 | 60.948 | ug/l # | 13 |
| 88) 1,4-Dichlorobenzene | 12.08 | 146 | 639 | Below Cal | # | 1 |
| 94) Hexachlorobutadiene | 13.77 | 225 | 76 | 0.885 | ug/l # | 56 |

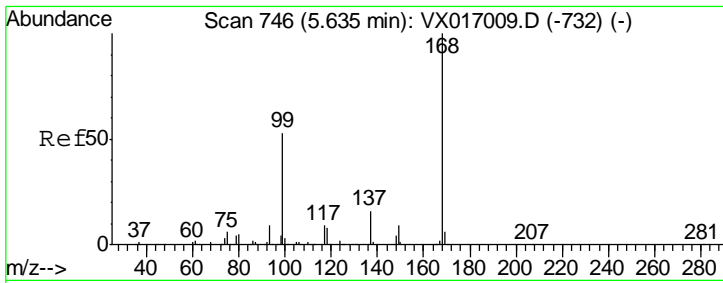
(#) = qualifier out of range (m) = manual integration (+) = signals summed

Data File : VX017256.D
Acq On : 08 Jul 2020 15:30
Operator : JC/SP
Sample : L3239-02
Misc : 5.0mL/MSVOA_X/WATER
ALS Vial : 14 Sample Multiplier: 1

Instrument :
MSVOA_X
Client Sampled :
OUTFALL001-200707

Quant Time: Jul 09 02:32:00 2020
Quant Method : Z:\VOASRV\HPCHEM1\MSVOA_X\METHOD\82X062920W.M
Quant Title : SW846 8260
QLast Update : Mon Jun 29 17:10:38 2020
Response via : Initial Calibration

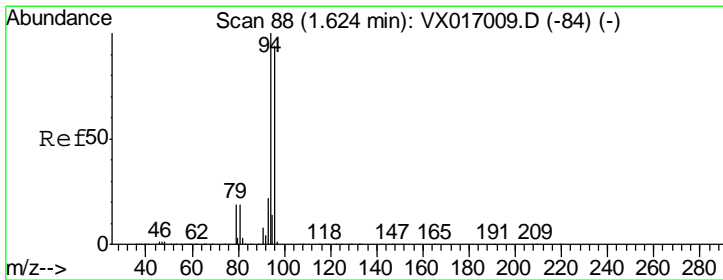
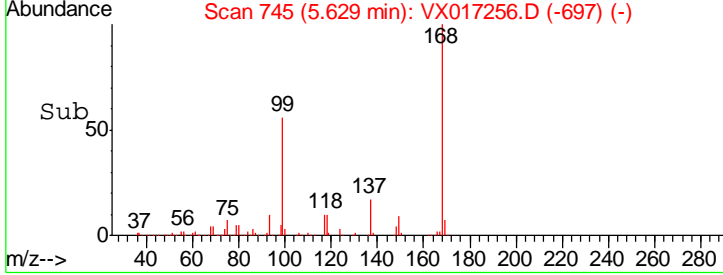
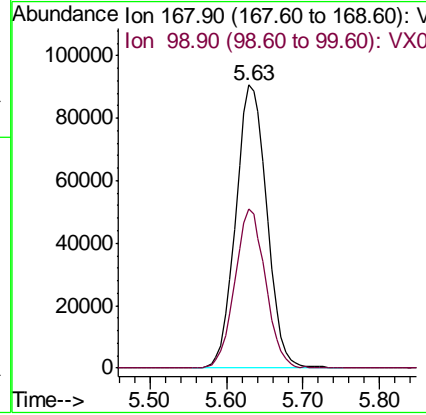
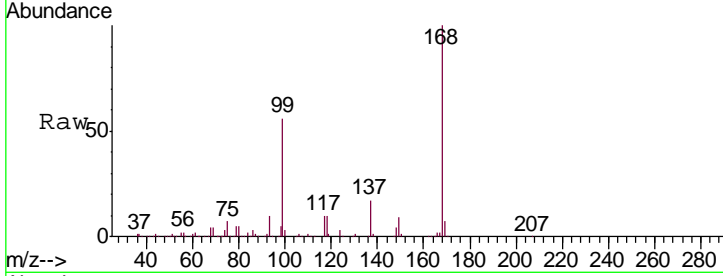




#1
 Pentafluorobenzene
 Concen: 50.000 ug/l
 RT: 5.63 min Scan# 745
 Delta R.T. -0.01 min
 Lab File: VX017256.D
 Acq: 08 Jul 2020 15:30

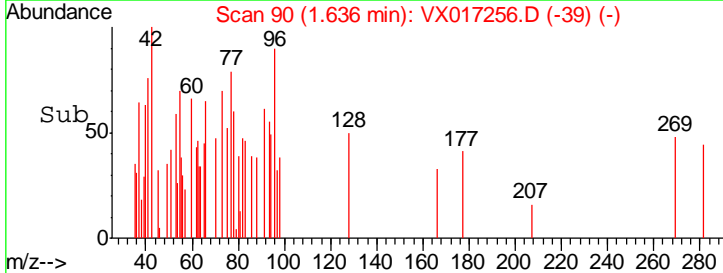
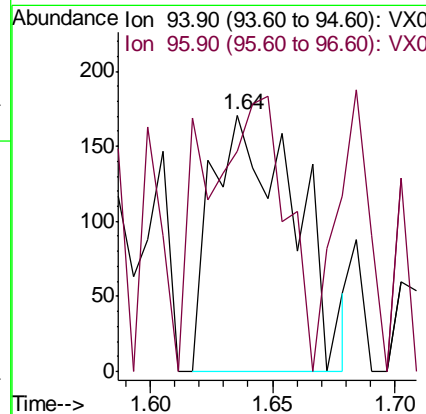
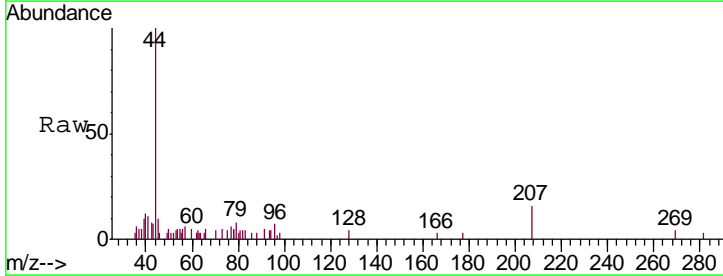
Instrument : MSVOA_X
 ClientSampled : OUTFALL001-200707

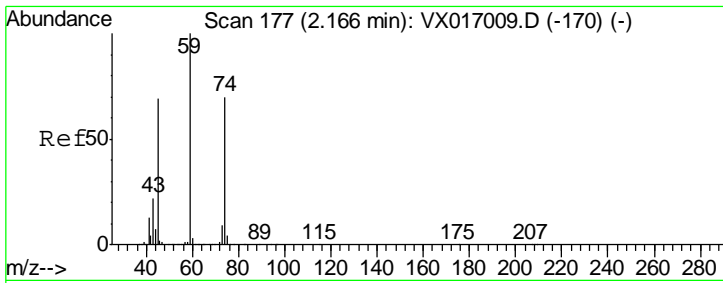
| Tgt Ion | Resp | Lower | Upper |
|---------|------|-------|-------|
| 168 | 100 | | |
| 99 | 56.1 | 42.6 | 64.0 |



#5
 Bromomethane
 Concen: 0.279 ug/l
 RT: 1.64 min Scan# 90
 Delta R.T. 0.01 min
 Lab File: VX017256.D
 Acq: 08 Jul 2020 15:30

| Tgt Ion | Resp | Lower | Upper |
|---------|------|-------|--------|
| 94 | 100 | | |
| 96 | 17.5 | 75.0 | 112.4# |

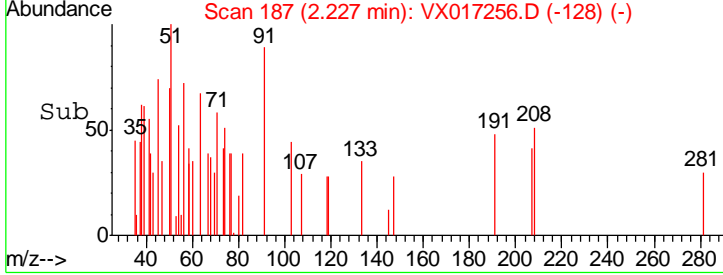
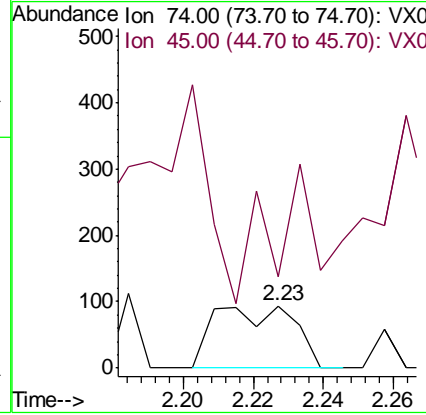
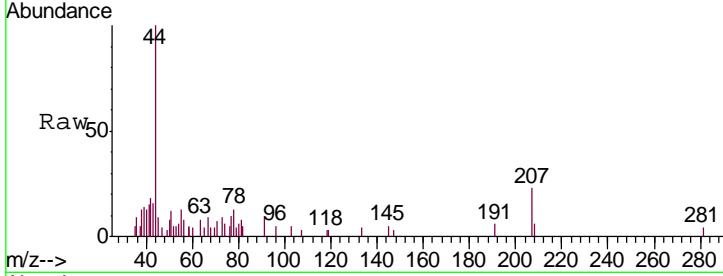




#8
 Diethyl Ether
 Concen: 0.472 ug/l
 RT: 2.23 min Scan# 187
 Delta R.T. 0.06 min
 Lab File: VX017256.D
 Acq: 08 Jul 2020 15:30

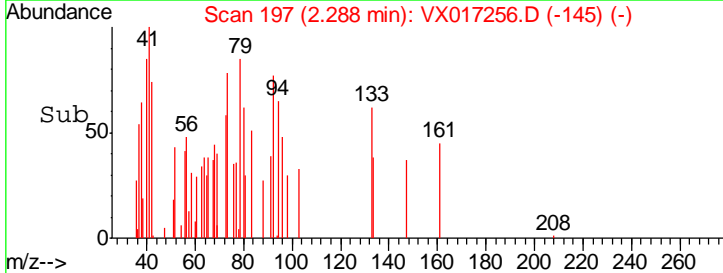
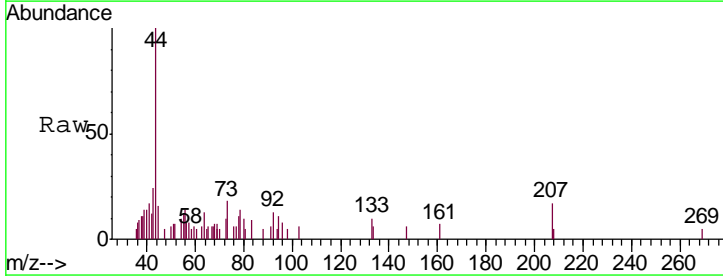
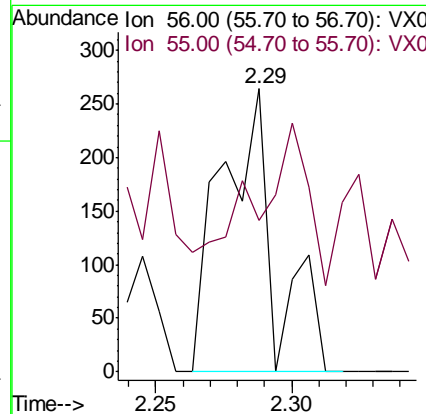
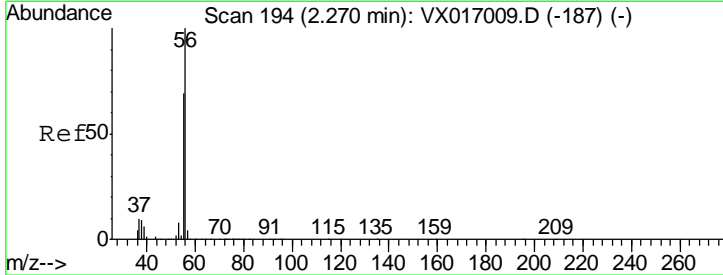
Instrument :
 MSVOA_X
ClientSampled :
 OUTFALL001-200707

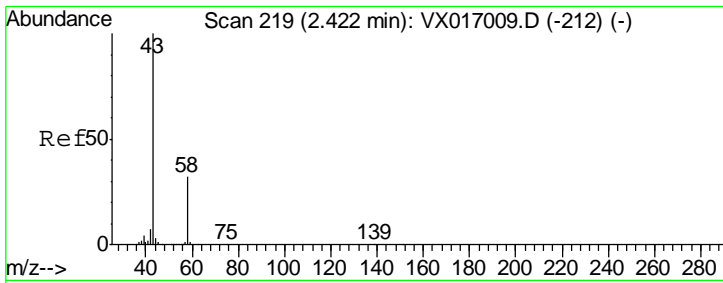
Tgt Ion: 74 Resp: 148
 Ion Ratio Lower Upper
 74 100
 45 138.5 49.8 149.3



#13
 Acrolein
 Concen: 1.012 ug/l
 RT: 2.29 min Scan# 197
 Delta R.T. 0.02 min
 Lab File: VX017256.D
 Acq: 08 Jul 2020 15:30

Tgt Ion: 56 Resp: 363
 Ion Ratio Lower Upper
 56 100
 55 53.2 55.7 83.5#

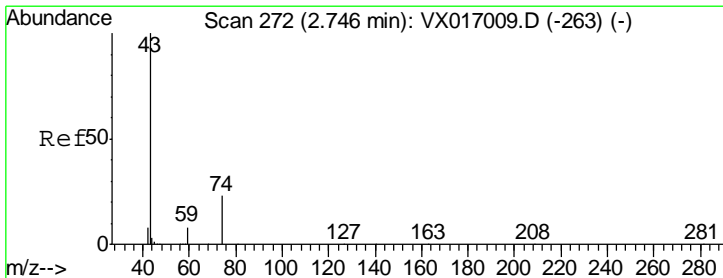
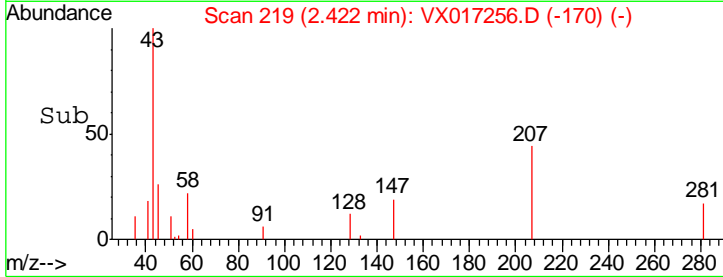
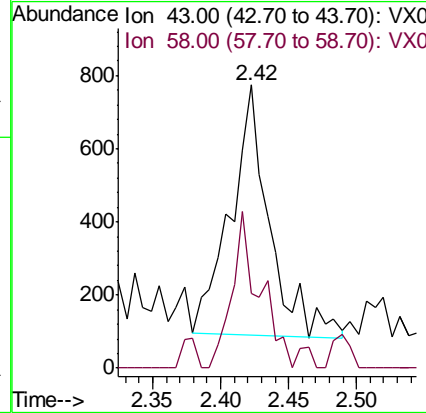
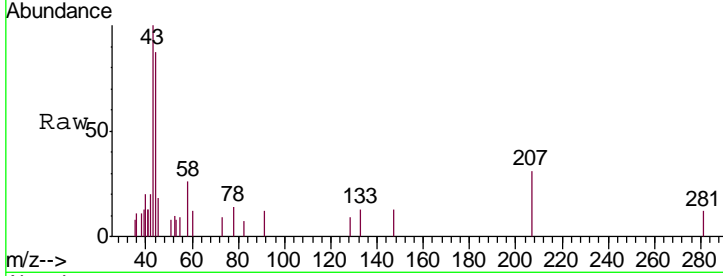




#16
 Acetone
 Concen: 1.158 ug/l
 RT: 2.42 min Scan# 219
 Delta R.T. -0.00 min
 Lab File: VX017256.D
 Acq: 08 Jul 2020 15:30

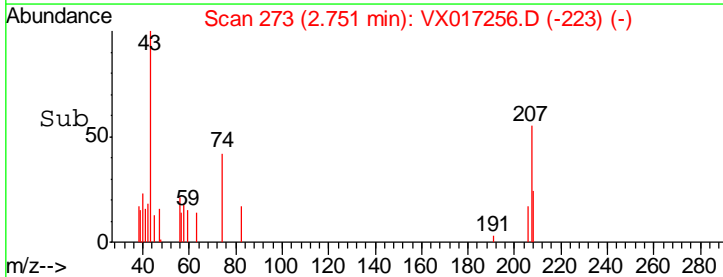
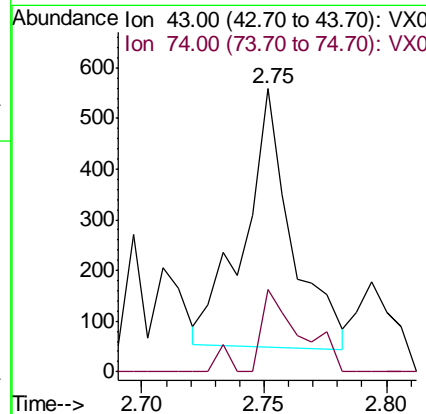
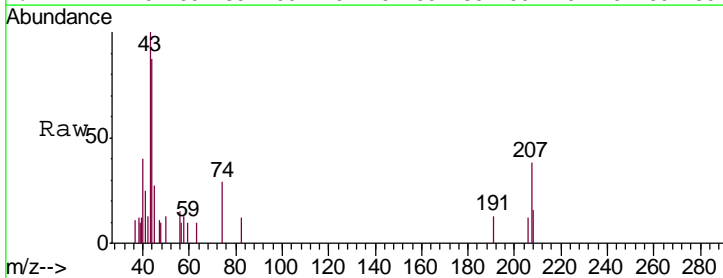
Instrument :
 MSVOA_X
 ClientSampled :
 OUTFALL001-200707

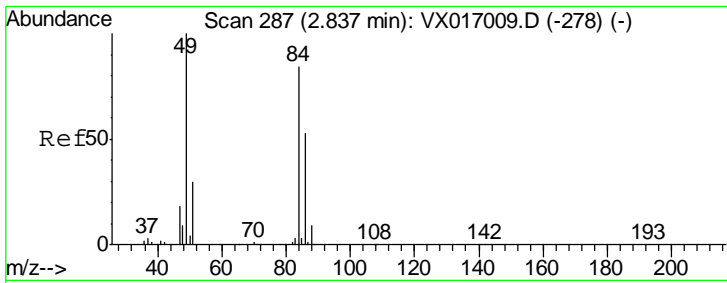
Tgt Ion: 43 Resp: 1362
 Ion Ratio Lower Upper
 43 100
 58 17.7 25.7 38.5#



#18
 Methyl Acetate
 Concen: 0.224 ug/l
 RT: 2.75 min Scan# 273
 Delta R.T. 0.01 min
 Lab File: VX017256.D
 Acq: 08 Jul 2020 15:30

Tgt Ion: 43 Resp: 688
 Ion Ratio Lower Upper
 43 100
 74 28.9 19.3 28.9#

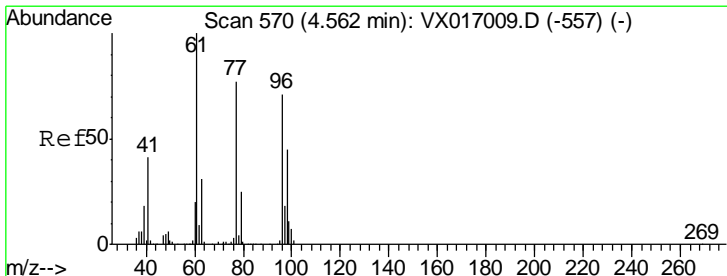
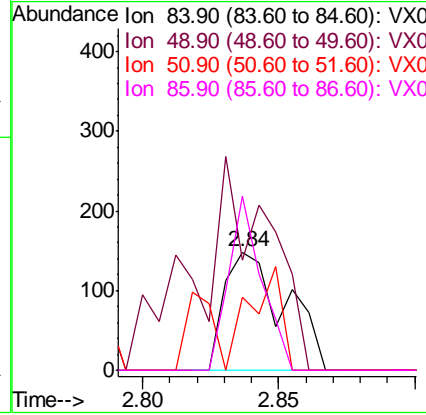
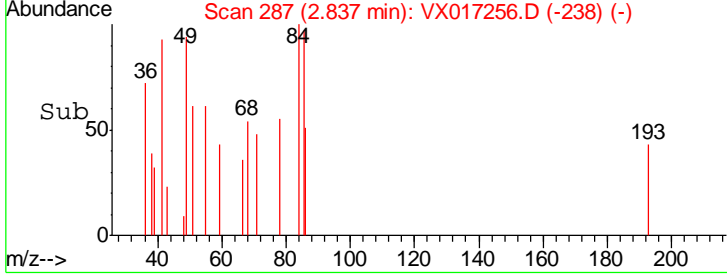
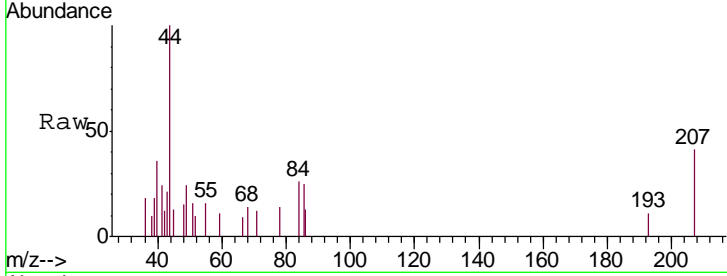




#20
 Methylene Chloride
 Concen: Below Cal
 RT: 2.84 min Scan# 287
 Delta R.T. 0.00 min
 Lab File: VX017256.D
 Acq: 08 Jul 2020 15:30

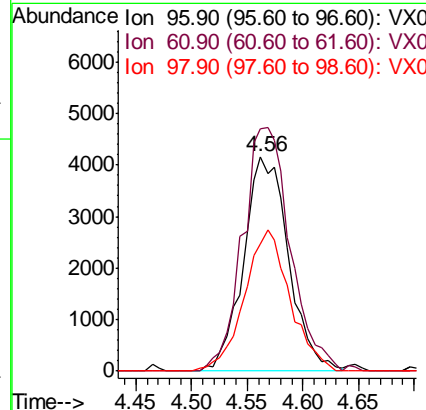
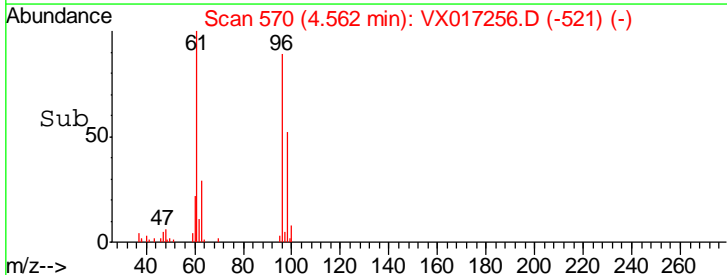
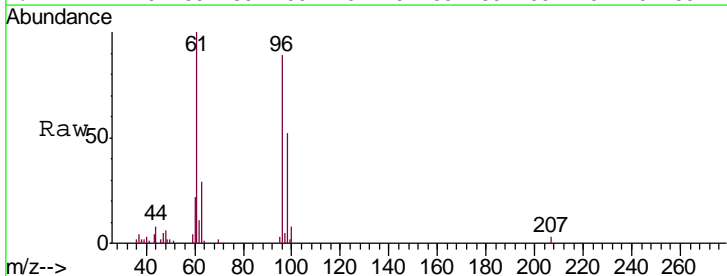
Instrument :
 MSVOA_X
 ClientSampled :
 OUTFALL001-200707

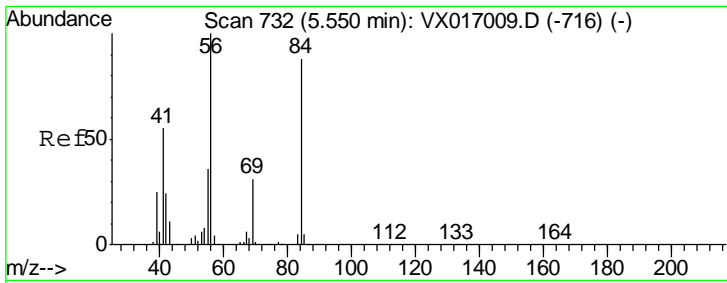
| Tgt Ion | Resp | Lower | Upper |
|---------|-------|-------|--------|
| 84 | 100 | | |
| 49 | 93.9 | 94.7 | 142.1# |
| 51 | 61.5 | 28.6 | 42.8# |
| 86 | 147.3 | 50.5 | 75.7# |



#27
 cis-1,2-Dichloroethene
 Concen: 3.693 ug/l
 RT: 4.56 min Scan# 570
 Delta R.T. -0.00 min
 Lab File: VX017256.D
 Acq: 08 Jul 2020 15:30

| Tgt Ion | Resp | Lower | Upper |
|---------|-------|-------|-------|
| 96 | 100 | | |
| 61 | 120.0 | 0.0 | 282.8 |
| 98 | 66.6 | 0.0 | 127.6 |

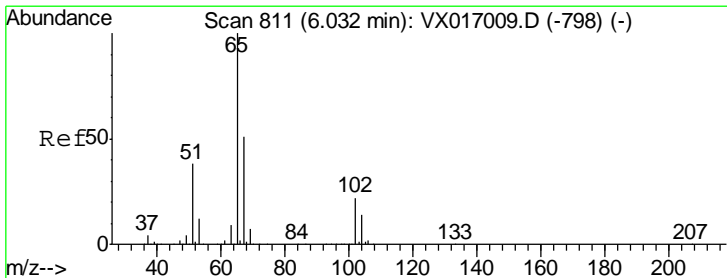
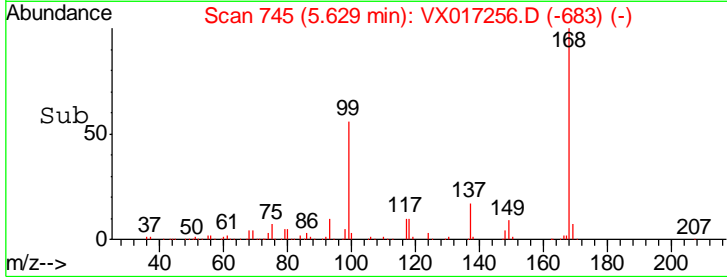
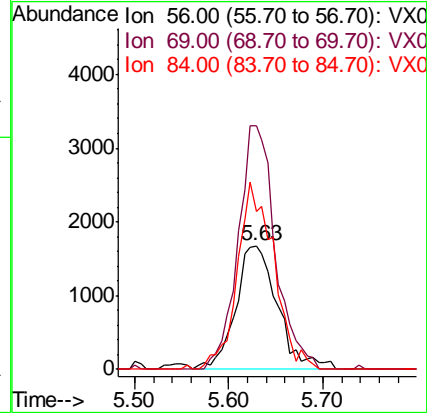
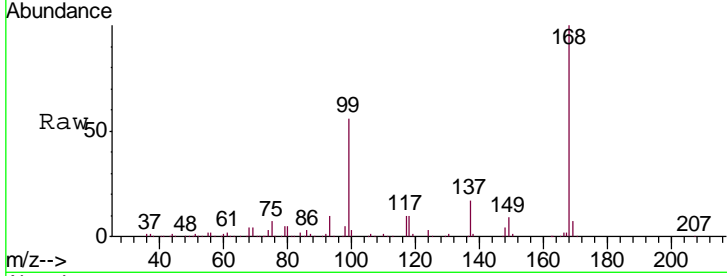




#31
 Cyclohexane
 Concen: 1.230 ug/l
 RT: 5.63 min Scan# 745
 Delta R.T. 0.08 min
 Lab File: VX017256.D
 Acq: 08 Jul 2020 15:30

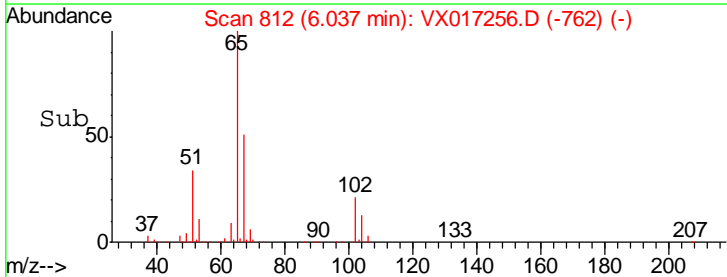
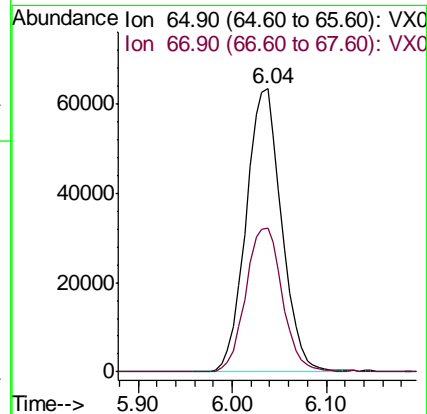
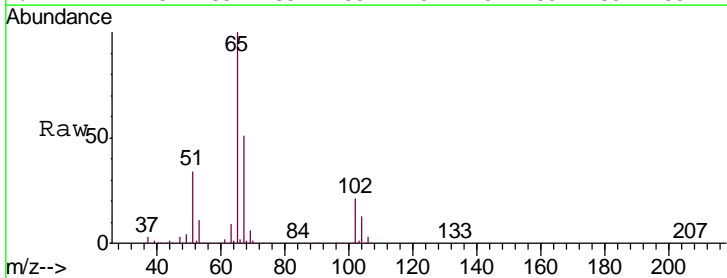
Instrument :
 MSVOA_X
 ClientSampleId :
 OUTFALL001-200707

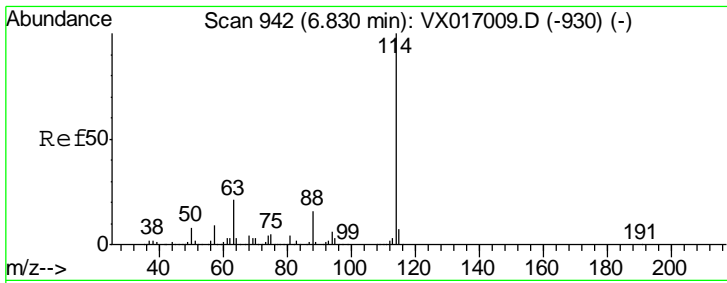
| Tgt Ion | Resp | Lower | Upper |
|---------|-------|-------|--------|
| 56 | 100 | | |
| 69 | 197.0 | 25.0 | 37.4# |
| 84 | 127.7 | 69.1 | 103.7# |



#33
 1,2-Dichloroethane-d4
 Concen: 53.320 ug/l
 RT: 6.04 min Scan# 812
 Delta R.T. 0.01 min
 Lab File: VX017256.D
 Acq: 08 Jul 2020 15:30

| Tgt Ion | Resp | Lower | Upper |
|---------|------|-------|-------|
| 65 | 100 | | |
| 67 | 52.2 | 0.0 | 103.8 |

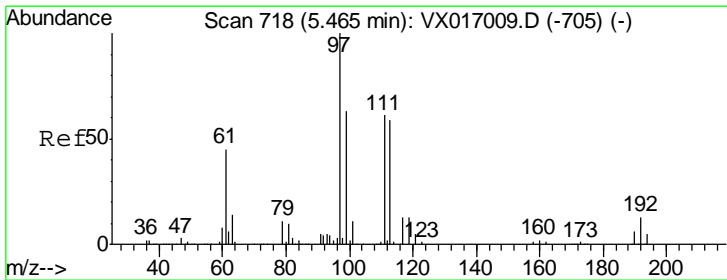
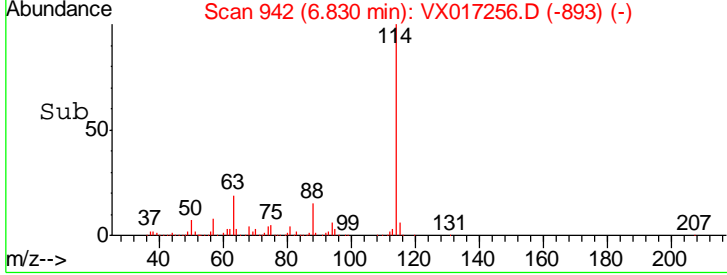
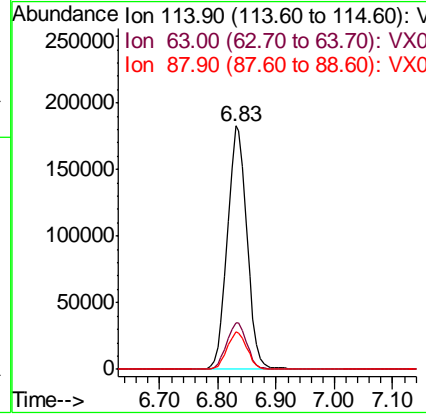
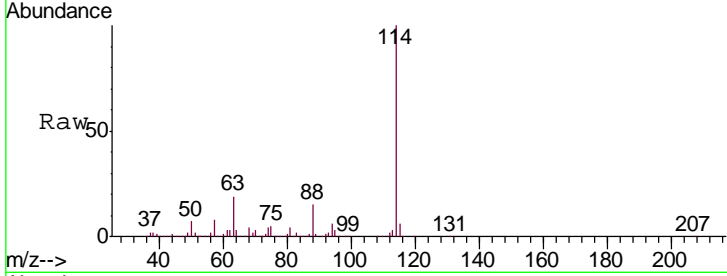




#34
 1,4-Difluorobenzene
 Concen: 50.000 ug/l
 RT: 6.83 min Scan# 942
 Delta R.T. -0.00 min
 Lab File: VX017256.D
 Acq: 08 Jul 2020 15:30

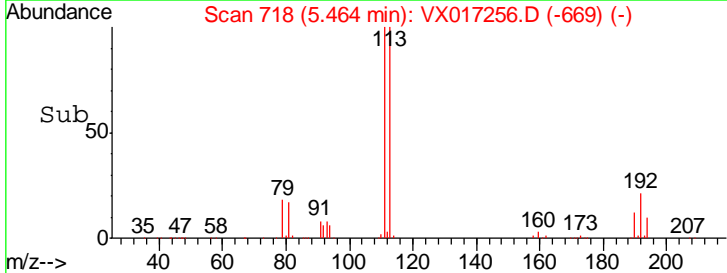
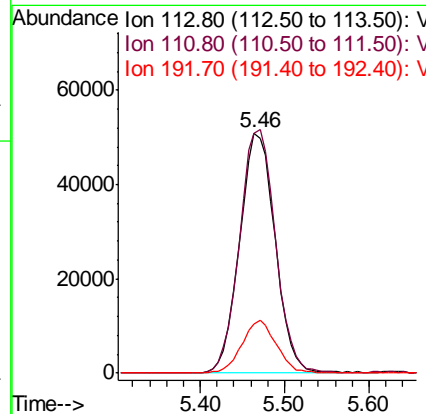
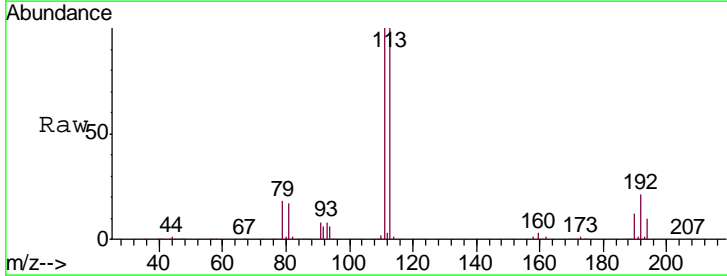
Instrument :
 MSVOA_X
 ClientSampleId :
 OUTFALL001-200707

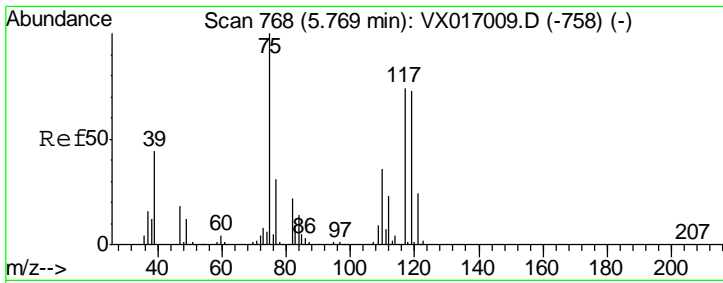
| Tgt Ion | Resp | Lower | Upper |
|---------|------|-------|-------|
| 114 | 100 | | |
| 63 | 19.1 | 0.0 | 41.4 |
| 88 | 15.2 | 0.0 | 32.4 |



#35
 Dibromofluoromethane
 Concen: 53.577 ug/l
 RT: 5.46 min Scan# 718
 Delta R.T. -0.00 min
 Lab File: VX017256.D
 Acq: 08 Jul 2020 15:30

| Tgt Ion | Resp | Lower | Upper |
|---------|-------|-------|-------|
| 113 | 100 | | |
| 111 | 102.6 | 81.9 | 122.9 |
| 192 | 21.3 | 16.7 | 25.1 |

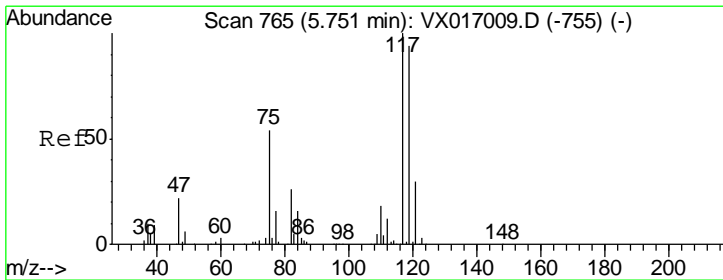
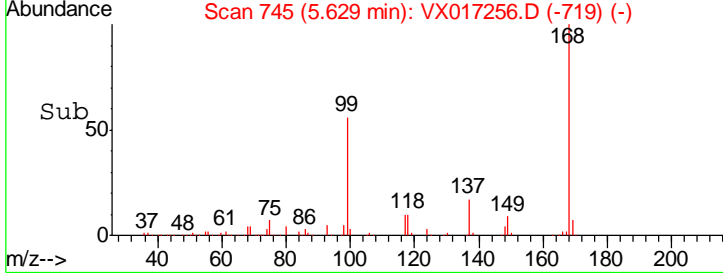
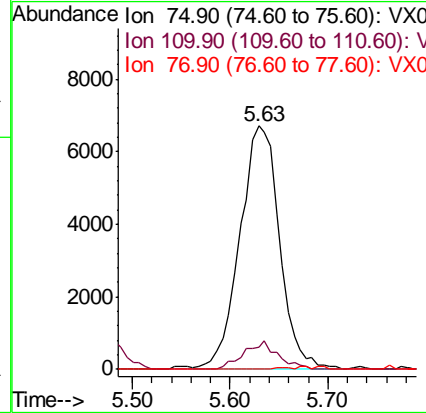
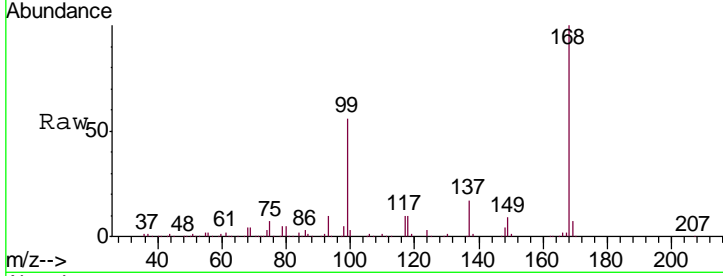




#36
 1,1-Dichloropropene
 Concen: 4.669 ug/l
 RT: 5.63 min Scan# 745
 Delta R.T. -0.14 min
 Lab File: VX017256.D
 Acq: 08 Jul 2020 15:30

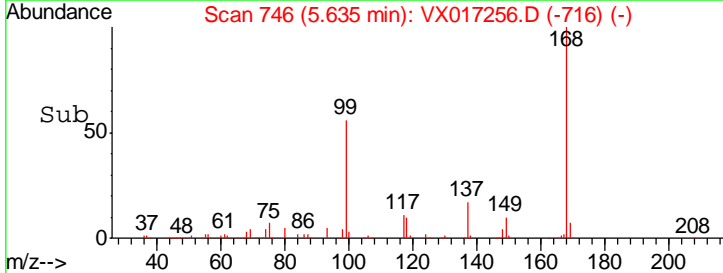
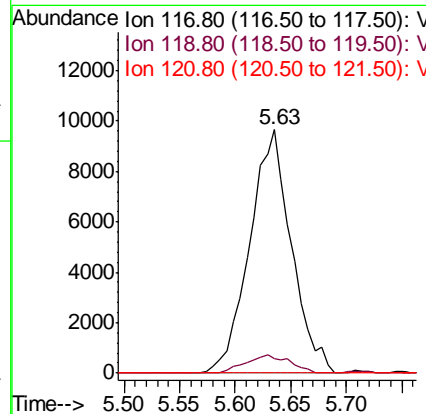
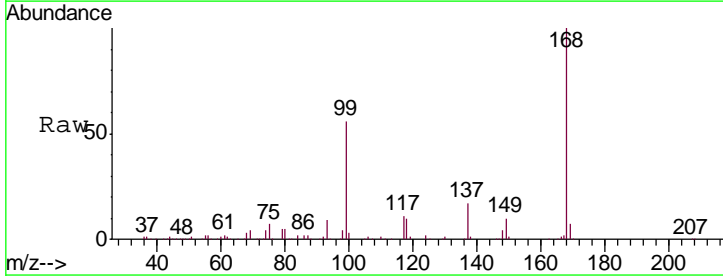
Instrument : MSVOA_X
 ClientSampled : OUTFALL001-200707

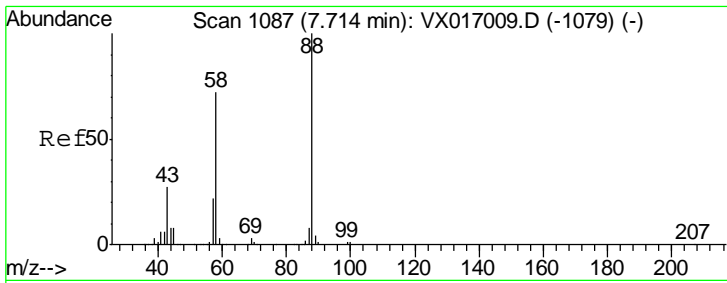
| Tgt Ion | Resp | Lower | Upper |
|---------|-------|-------|-------|
| 75 | 18884 | | |
| 110 | 10.0 | 18.1 | 54.1# |
| 77 | 0.0 | 24.6 | 37.0# |



#38
 Carbon Tetrachloride
 Concen: 5.660 ug/l
 RT: 5.63 min Scan# 746
 Delta R.T. -0.12 min
 Lab File: VX017256.D
 Acq: 08 Jul 2020 15:30

| Tgt Ion | Resp | Lower | Upper |
|---------|-------|-------|--------|
| 117 | 25211 | | |
| 119 | 5.9 | 75.4 | 113.0# |
| 121 | 0.0 | 23.8 | 35.6# |

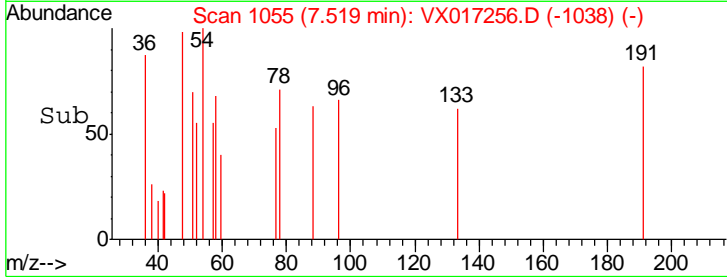
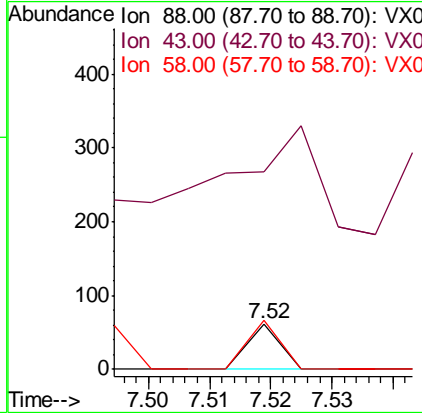
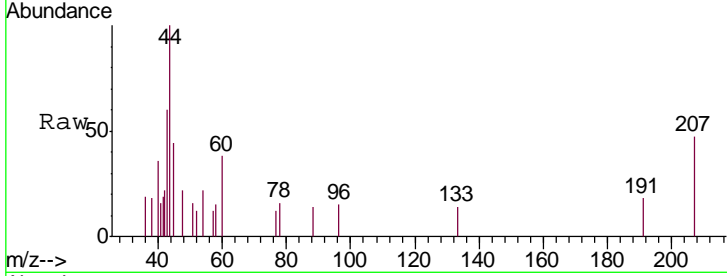




#49
 1,4-Dioxane
 Concen: 0.313 ug/l
 RT: 7.52 min Scan# 1055
 Delta R.T. -0.20 min
 Lab File: VX017256.D
 Acq: 08 Jul 2020 15:30

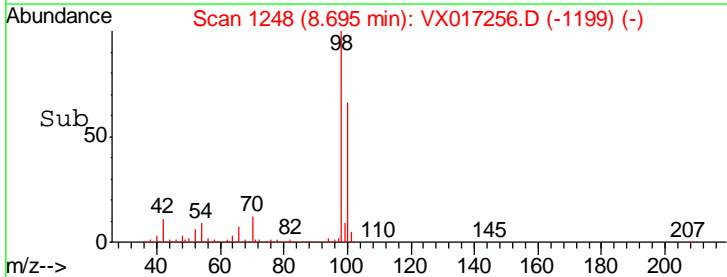
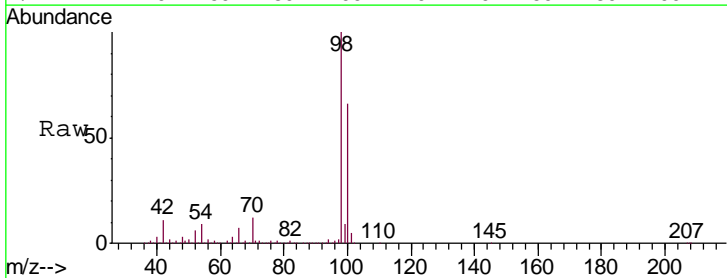
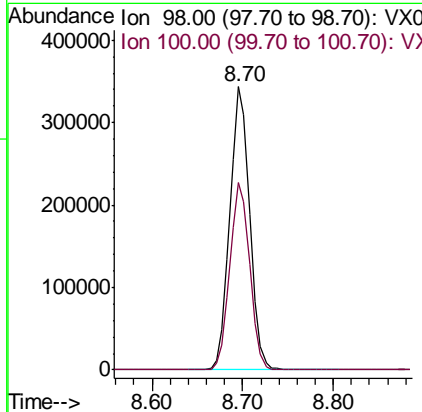
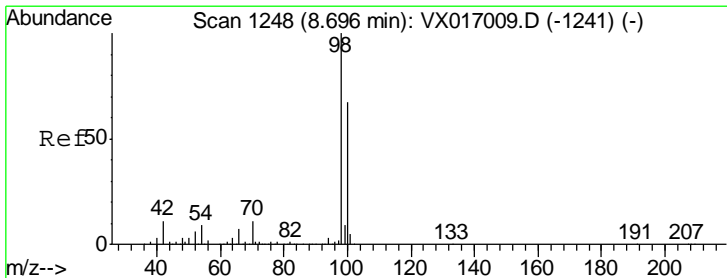
Instrument :
 MSVOA_X
ClientSampled :
 OUTFALL001-200707

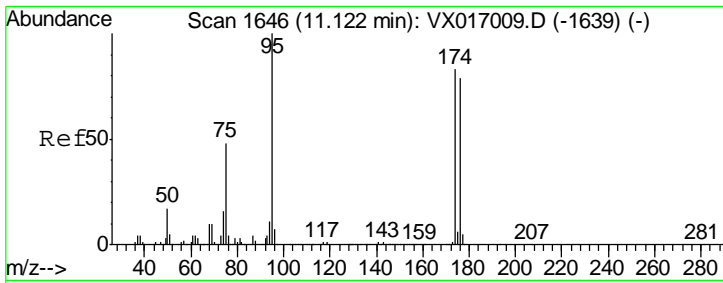
| Tgt Ion | Resp | Lower | Upper |
|---------|-------|-------|-------|
| 88 | 100 | | |
| 43 | 960.9 | 25.8 | 38.8# |
| 58 | 108.7 | 54.8 | 82.2# |



#50
 Toluene-d8
 Concen: 52.049 ug/l
 RT: 8.70 min Scan# 1248
 Delta R.T. -0.00 min
 Lab File: VX017256.D
 Acq: 08 Jul 2020 15:30

| Tgt Ion | Resp | Lower | Upper |
|---------|------|-------|-------|
| 98 | 100 | | |
| 100 | 66.5 | 53.8 | 80.6 |

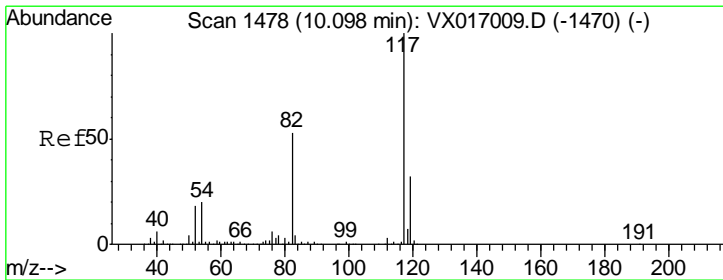
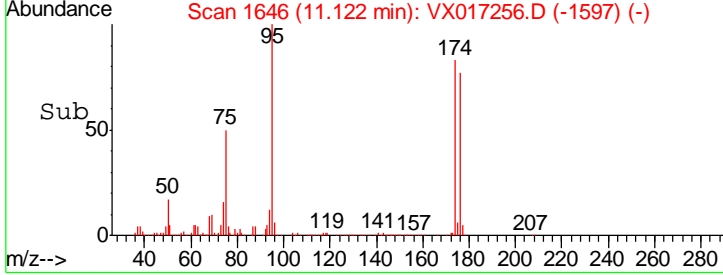
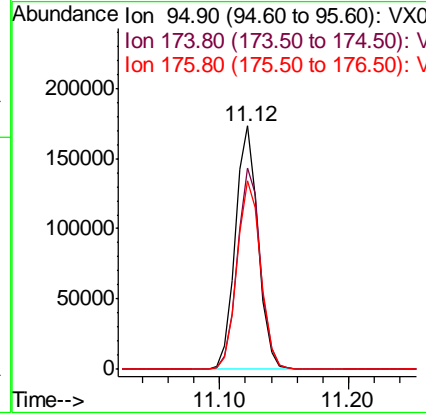
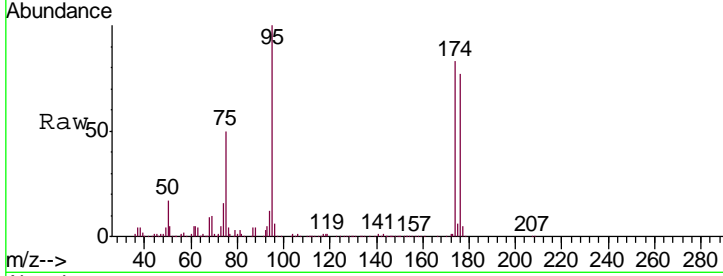




#62
 4-Bromofluorobenzene
 Concen: 54.852 ug/l
 RT: 11.12 min Scan# 1646
 Delta R.T. -0.00 min
 Lab File: VX017256.D
 Acq: 08 Jul 2020 15:30

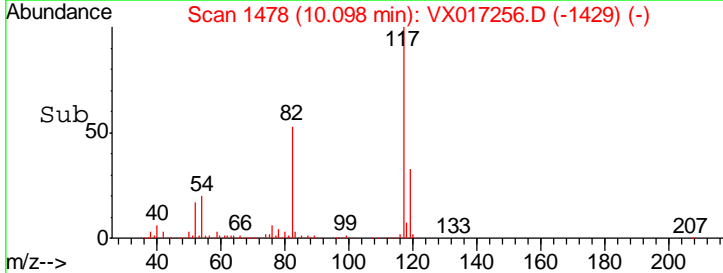
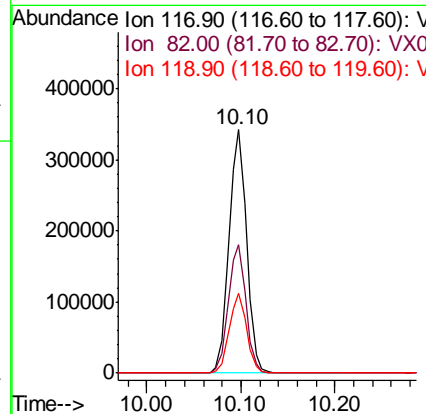
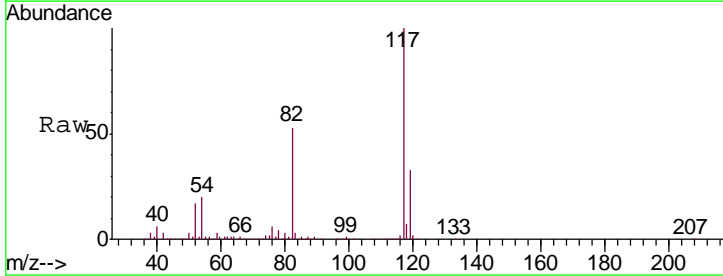
Instrument : MSVOA_X
 ClientSampled : OUTFALL001-200707

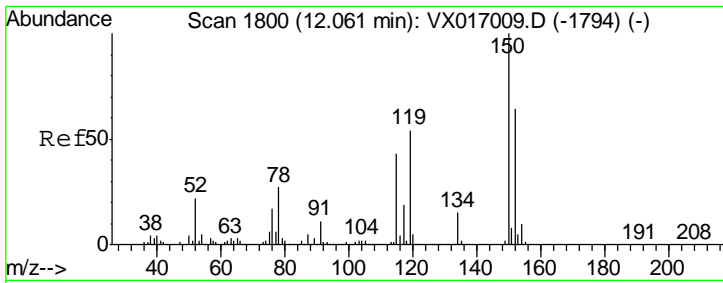
| Tgt Ion | Resp | Lower | Upper |
|---------|--------|-------|-------|
| 95 | 214621 | | |
| 174 | 83.9 | 0.0 | 164.0 |
| 176 | 80.2 | 0.0 | 157.6 |



#63
 Chlorobenzene-d5
 Concen: 50.000 ug/l
 RT: 10.10 min Scan# 1478
 Delta R.T. -0.00 min
 Lab File: VX017256.D
 Acq: 08 Jul 2020 15:30

| Tgt Ion | Resp | Lower | Upper |
|---------|--------|-------|-------|
| 117 | 443218 | | |
| 82 | 52.7 | 42.6 | 63.8 |
| 119 | 32.6 | 25.4 | 38.2 |

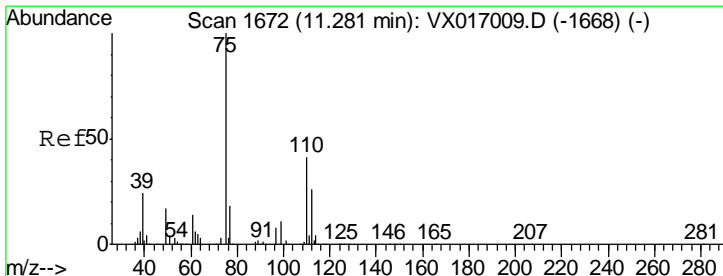
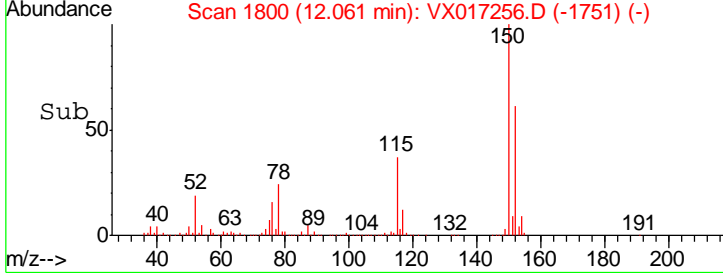
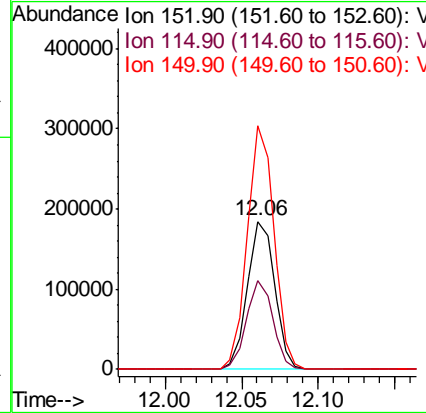
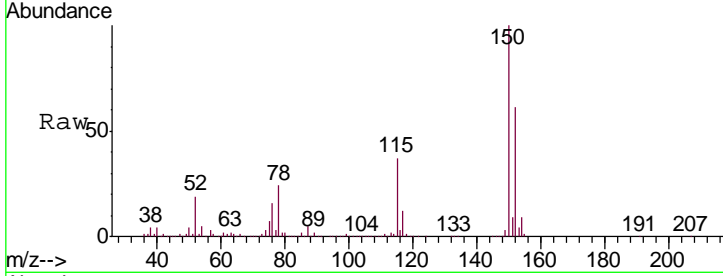




#72
 1,4-Dichlorobenzene-d4
 Concen: 50.000 ug/l
 RT: 12.06 min Scan# 1800
 Delta R.T. -0.00 min
 Lab File: VX017256.D
 Acq: 08 Jul 2020 15:30

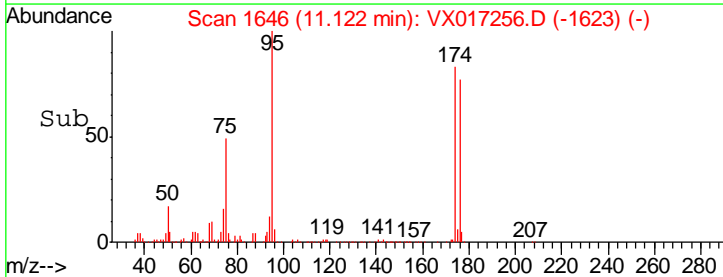
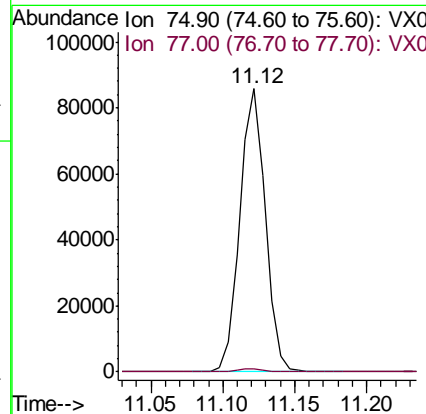
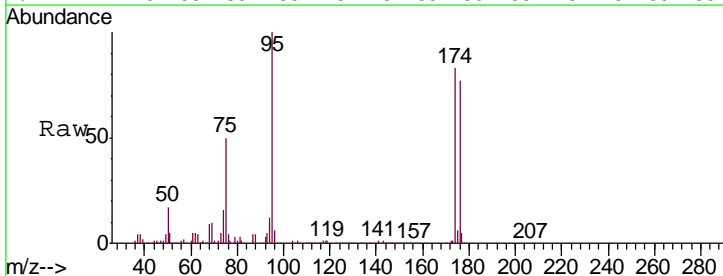
Instrument : MSVOA_X
 ClientSampleId : OUTFALL001-200707

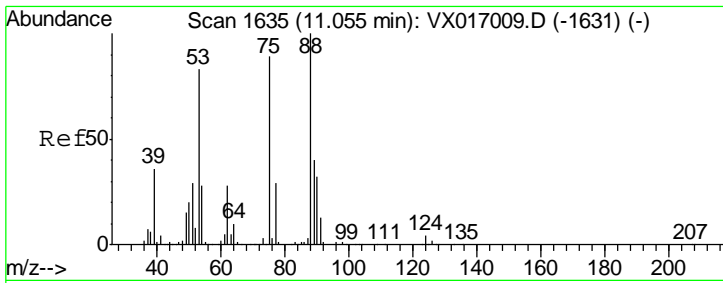
| Tgt Ion | Resp | Lower | Upper |
|---------|-------|-------|-------|
| 152 | 100 | | |
| 115 | 57.9 | 40.9 | 122.7 |
| 150 | 161.1 | 0.0 | 351.6 |



#76
 1,2,3-Trichloropropane
 Concen: 23.535 ug/l
 RT: 11.12 min Scan# 1646
 Delta R.T. -0.16 min
 Lab File: VX017256.D
 Acq: 08 Jul 2020 15:30

| Tgt Ion | Resp | Lower | Upper |
|---------|------|-------|-------|
| 75 | 100 | | |
| 77 | 1.2 | 20.2 | 60.6# |

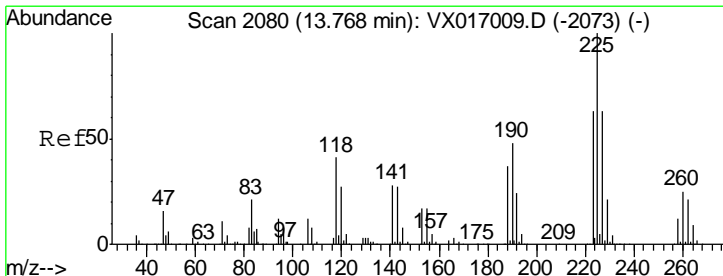
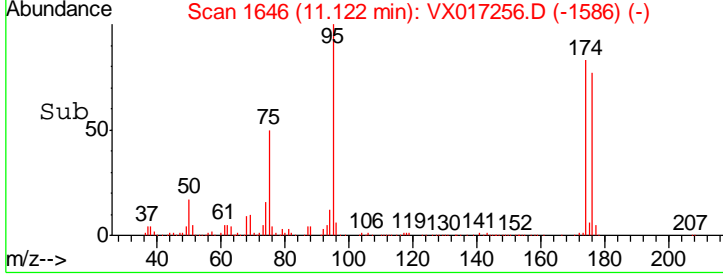
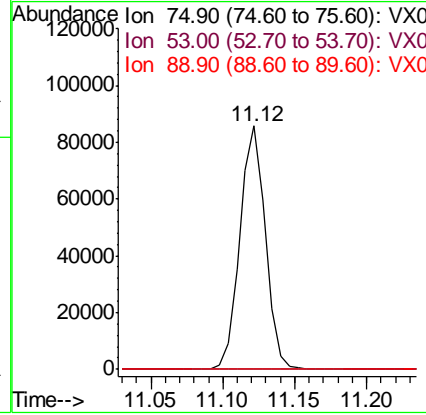
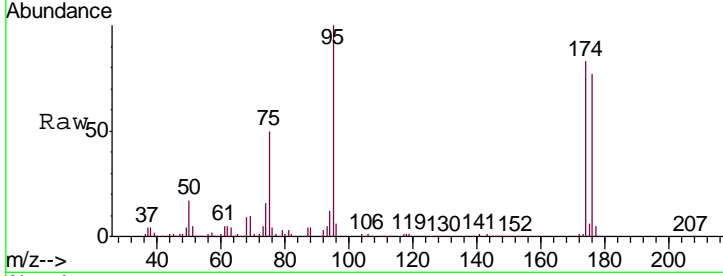




#81
 trans-1,4-Dichloro-2-butene
 Concen: 60.948 ug/l
 RT: 11.12 min Scan# 1646
 Delta R.T. 0.07 min
 Lab File: VX017256.D
 Acq: 08 Jul 2020 15:30

Instrument : MSVOA_X
 ClientSampleId : OUTFALL001-200707

| Tgt Ion | Resp | Lower | Upper |
|---------|--------|-------|--------|
| 75 | 106096 | | |
| 53 | 0.3 | 72.4 | 108.6# |
| 89 | 0.0 | 37.0 | 55.4# |



#94
 Hexachlorobutadiene
 Concen: 0.885 ug/l
 RT: 13.77 min Scan# 2080
 Delta R.T. 0.00 min
 Lab File: VX017256.D
 Acq: 08 Jul 2020 15:30

| Tgt Ion | Resp | Lower | Upper |
|---------|------|-------|-------|
| 225 | 76 | | |
| 223 | 61.8 | 32.5 | 97.5 |
| 227 | 0.0 | 33.1 | 99.2# |

