

Data Path : Z:\voasrv\HPCHEM1\MSVOA_X\Data\VX070821\
 Data File : VX023205.D
 Acq On : 08 Jul 2021 17:26
 Operator : JC/MD
 Sample : PB137563ZHE#11
 Misc : 5.0mL/MSVOA_X/WATER
 ALS Vial : 21 Sample Multiplier: 1

Instrument :
 MSVOA_X
 ClientSampled :

Quant Time: Jul 09 08:13:32 2021
 Quant Method : Z:\voasrv\HPCHEM1\MSVOA_X\Method\82X070221W.M
 Quant Title : SW846 8260
 QLast Update : Fri Jul 02 14:29:42 2021
 Response via : Initial Calibration

Compound	R.T.	QIon	Response	Conc	Units	Dev(Min)

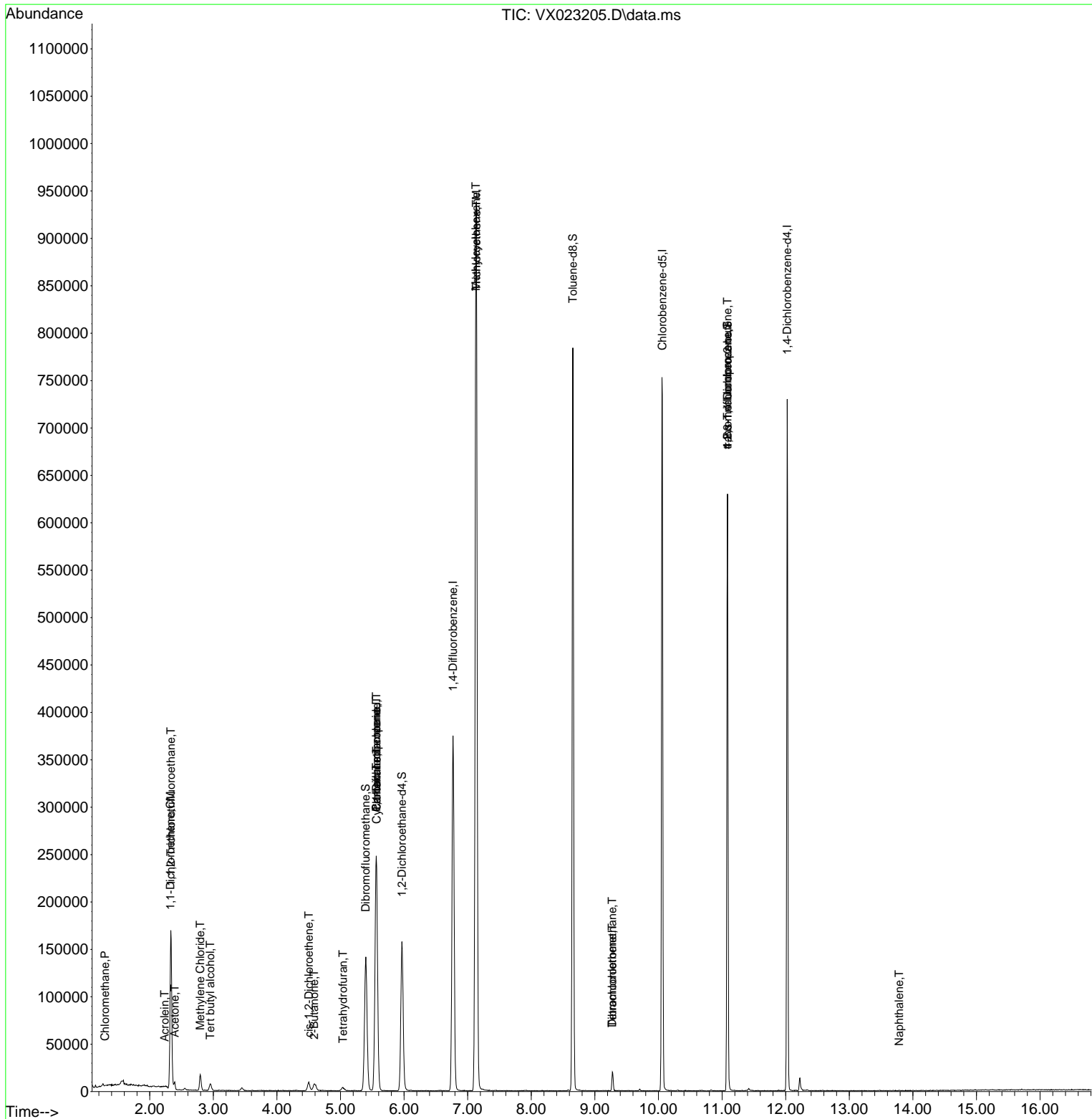
Internal Standards						
1) Pentafluorobenzene	5.562	168	227940	50.000	ug/l	0.00
34) 1,4-Difluorobenzene	6.769	114	374862	50.000	ug/l	0.00
63) Chlorobenzene-d5	10.061	117	341020	50.000	ug/l	0.00
72) 1,4-Dichlorobenzene-d4	12.024	152	144425	50.000	ug/l	0.00
System Monitoring Compounds						
33) 1,2-Dichloroethane-d4	5.964	65	156170	50.977	ug/l	0.00
Spiked Amount	50.000	Range 78 - 117	Recovery	=	101.960%	
35) Dibromofluoromethane	5.397	113	117815	48.670	ug/l	0.00
Spiked Amount	50.000	Range 75 - 124	Recovery	=	97.340%	
50) Toluene-d8	8.653	98	447574	49.566	ug/l	0.00
Spiked Amount	50.000	Range 92 - 112	Recovery	=	99.140%	
62) 4-Bromofluorobenzene	11.085	95	168674	48.386	ug/l	0.00
Spiked Amount	50.000	Range 83 - 123	Recovery	=	96.780%	
Target Compounds						
						Qvalue
3) Chloromethane	1.294	50	454	0.222	ug/l #	79
5) Bromomethane	1.605	94	330	Below Cal	#	31
9) 1,1,2-Trichlorotrifluo...	2.331	101	65297	29.660	ug/l	98
11) Tert butyl alcohol	2.953	59	4390	6.812	ug/l #	75
12) 1,1-Dichloroethene	2.325	96	596	0.293	ug/l #	66
13) Acrolein	2.233	56	130	0.303	ug/l #	14
16) Acetone	2.392	43	7658	6.318	ug/l	99
20) Methylene Chloride	2.794	84	7203	2.760	ug/l #	90
25) 2-Butanone	4.586	43	934	0.511	ug/l #	45
27) cis-1,2-Dichloroethene	4.501	96	5309	1.997	ug/l	95
29) Tetrahydrofuran	5.038	42	3253	2.769	ug/l #	50
31) Cyclohexane	5.568	56	4874	1.329	ug/l #	31
36) 1,1-Dichloropropene	5.562	75	18196	5.445	ug/l #	50
38) Carbon Tetrachloride	5.562	117	24170	6.929	ug/l #	15
39) Methylcyclohexane	7.129	83	4571	1.170	ug/l #	1
44) Trichloroethene	7.135	130	362779	131.806	ug/l	99
60) Dibromochloromethane	9.275	129	3889	4.351	ug/l #	11
64) Tetrachloroethene	9.275	164	3592	1.321	ug/l #	84
76) 1,2,3-Trichloropropane	11.085	75	86439	29.742	ug/l #	38
81) trans-1,4-Dichloro-2-b...	11.085	75	86439	79.898	ug/l #	12
95) Naphthalene	13.786	128	298	1.303	ug/l #	69

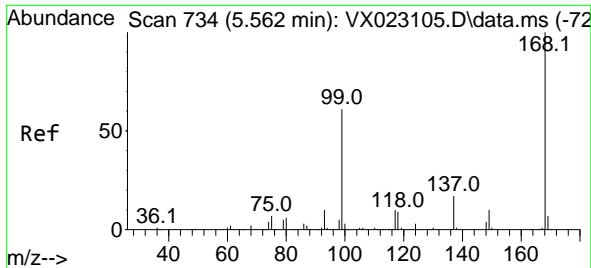
(#) = qualifier out of range (m) = manual integration (+) = signals summed

Data Path : Z:\voasrv\HPCHEM1\MSVOA_X\Data\VX070821\
 Data File : VX023205.D
 Acq On : 08 Jul 2021 17:26
 Operator : JC/MD
 Sample : PB137563ZHE#11
 Misc : 5.0mL/MSVOA_X/WATER
 ALS Vial : 21 Sample Multiplier: 1

Instrument :
 MSVOA_X
 ClientSampleId :

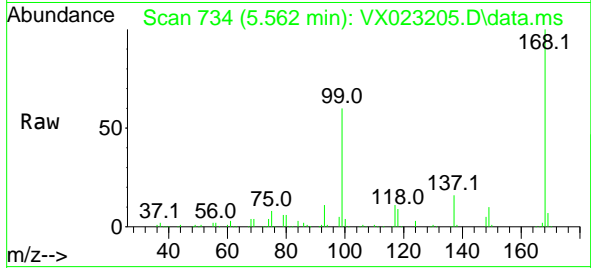
Quant Time: Jul 09 08:13:32 2021
 Quant Method : Z:\voasrv\HPCHEM1\MSVOA_X\Method\82X070221W.M
 Quant Title : SW846 8260
 QLast Update : Fri Jul 02 14:29:42 2021
 Response via : Initial Calibration



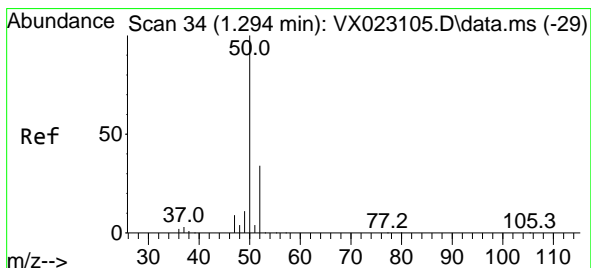
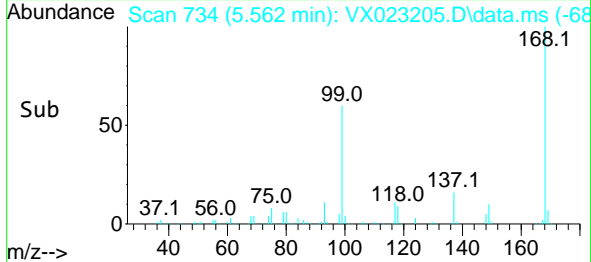
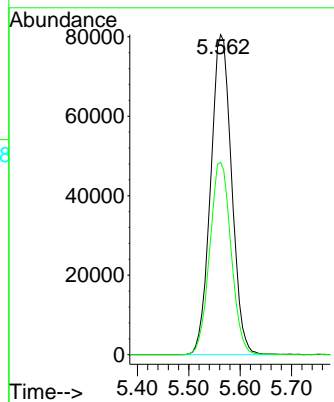


#1
 Pentafluorobenzene
 Concen: 50.000 ug/l
 RT: 5.562 min Scan# 734
 Delta R.T. -0.000 min
 Lab File: VX023205.D
 Acq: 08 Jul 2021 17:26

Instrument :
 MSVOA_X
 ClientSampled :

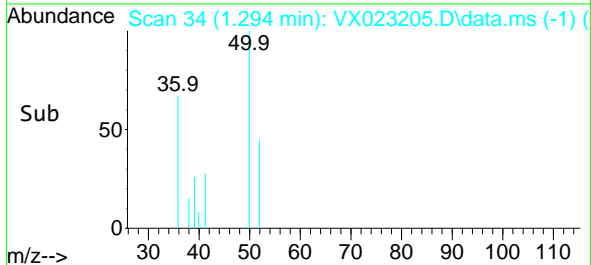
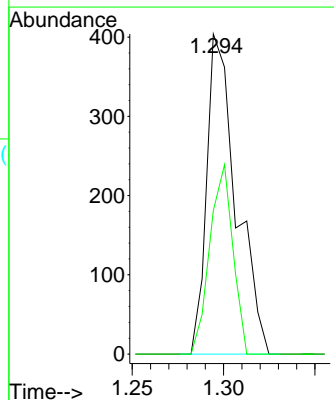
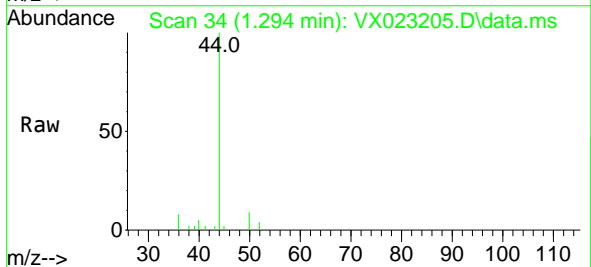


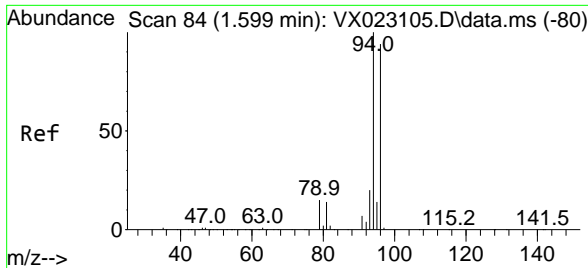
Tgt Ion:168 Resp: 227940
 Ion Ratio Lower Upper
 168 100
 99 60.1 45.8 68.6



#3
 Chloromethane
 Concen: 0.222 ug/l
 RT: 1.294 min Scan# 34
 Delta R.T. 0.000 min
 Lab File: VX023205.D
 Acq: 08 Jul 2021 17:26

Tgt Ion: 50 Resp: 454
 Ion Ratio Lower Upper
 50 100
 52 44.8 26.4 39.6#

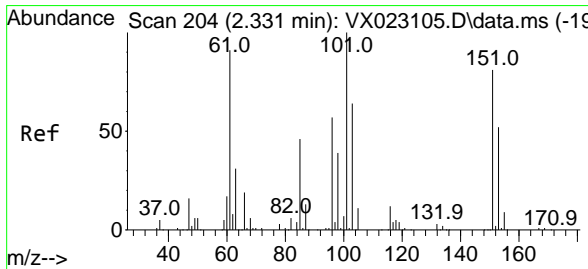
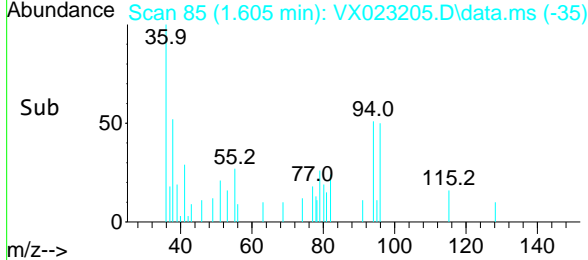
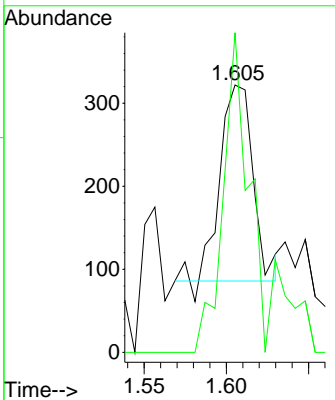
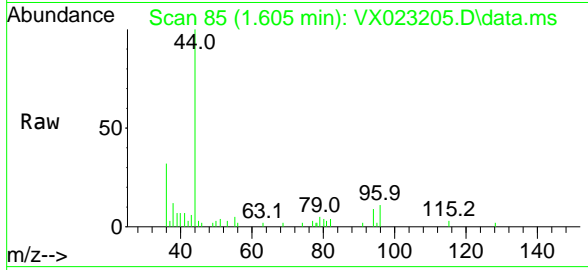




#5
 Bromomethane
 Concen: Below Cal
 RT: 1.605 min Scan# 85
 Delta R.T. 0.006 min
 Lab File: VX023205.D
 Acq: 08 Jul 2021 17:26

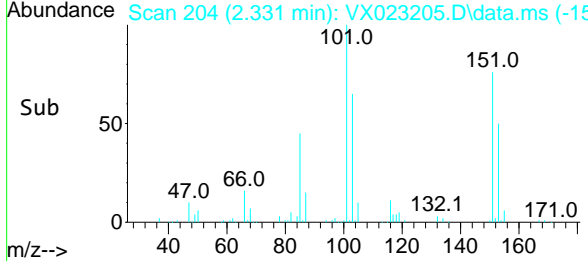
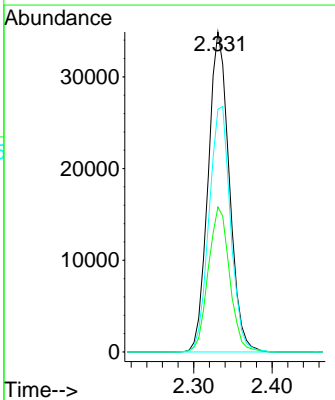
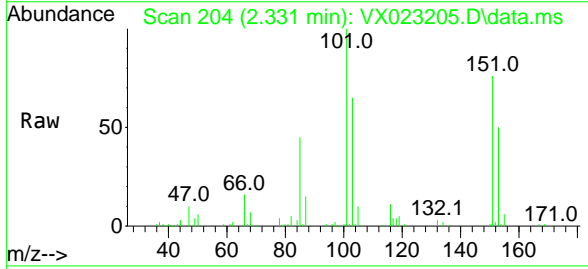
Instrument :
 MSVOA_X
 ClientSampled :

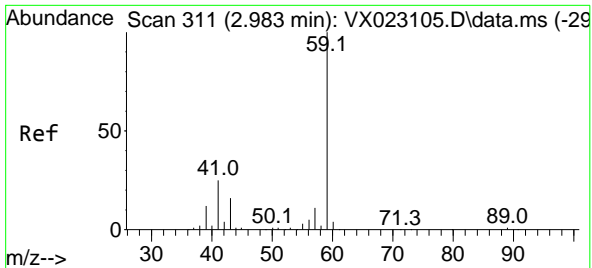
Tgt Ion: 94 Resp: 330
 Ion Ratio Lower Upper
 94 100
 96 163.1 76.4 114.6#



#9
 1,1,2-Trichlorotrifluoroethane
 Concen: 29.660 ug/l
 RT: 2.331 min Scan# 204
 Delta R.T. -0.000 min
 Lab File: VX023205.D
 Acq: 08 Jul 2021 17:26

Tgt Ion:101 Resp: 65297
 Ion Ratio Lower Upper
 101 100
 85 45.7 34.9 52.3
 151 78.3 61.4 92.2

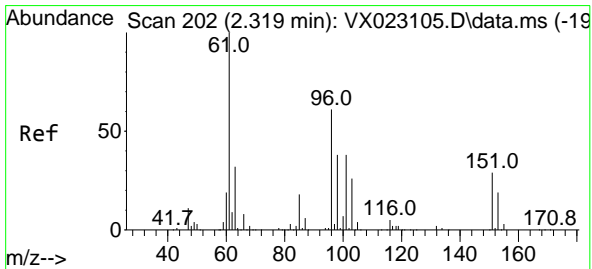
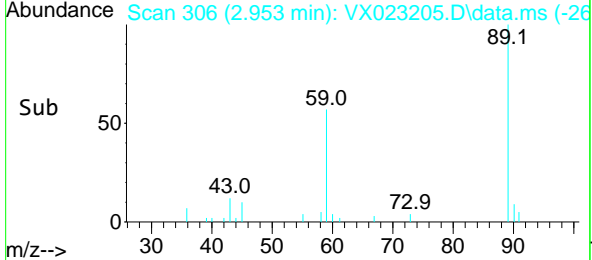
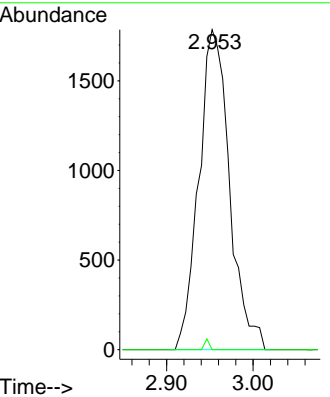
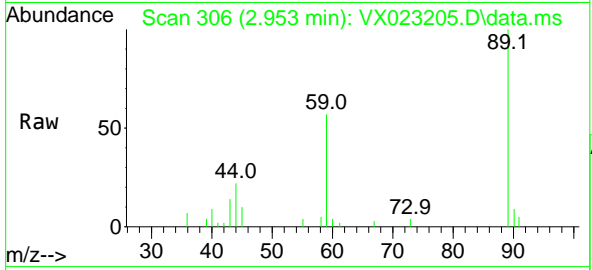




#11
 Tert butyl alcohol
 Concen: 6.812 ug/l
 RT: 2.953 min Scan# 306
 Delta R.T. -0.030 min
 Lab File: VX023205.D
 Acq: 08 Jul 2021 17:26

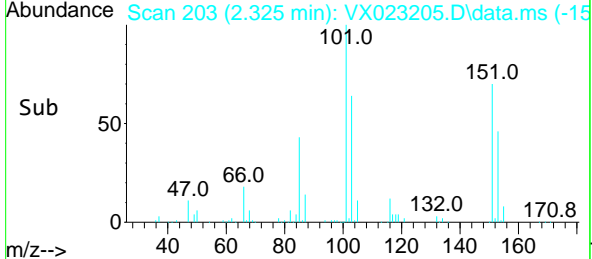
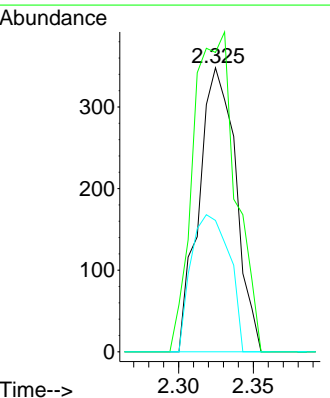
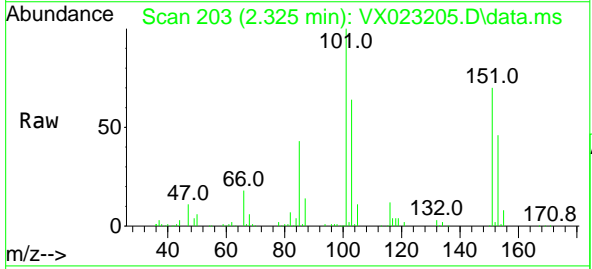
Instrument :
 MSVOA_X
 ClientSampled :

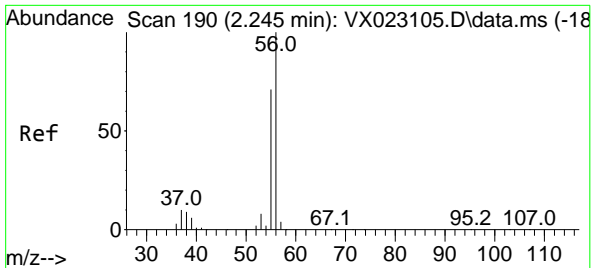
Tgt Ion: 59 Resp: 4390
 Ion Ratio Lower Upper
 59 100
 57 0.5 7.8 11.8#



#12
 1,1-Dichloroethene
 Concen: 0.293 ug/l
 RT: 2.325 min Scan# 203
 Delta R.T. 0.006 min
 Lab File: VX023205.D
 Acq: 08 Jul 2021 17:26

Tgt Ion: 96 Resp: 596
 Ion Ratio Lower Upper
 96 100
 61 105.5 124.6 187.0#
 98 46.3 50.6 76.0#

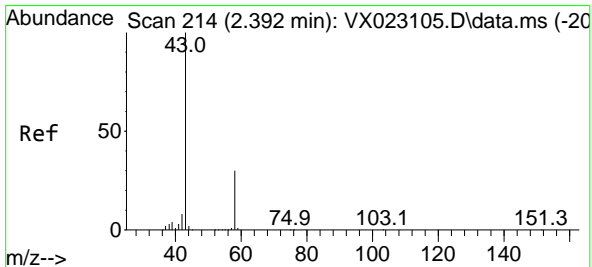
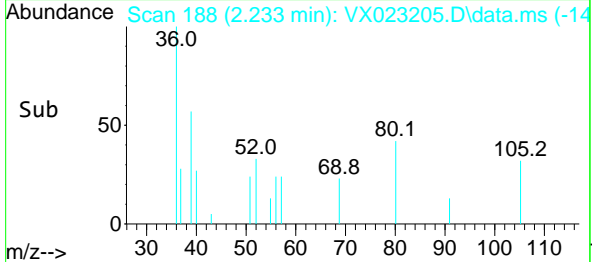
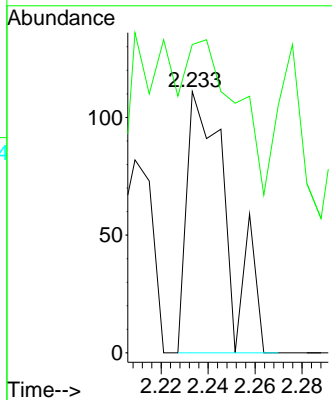
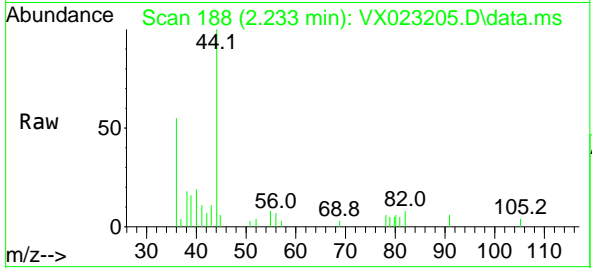




#13
 Acrolein
 Concen: 0.303 ug/l
 RT: 2.233 min Scan# 188
 Delta R.T. -0.012 min
 Lab File: VX023205.D
 Acq: 08 Jul 2021 17:26

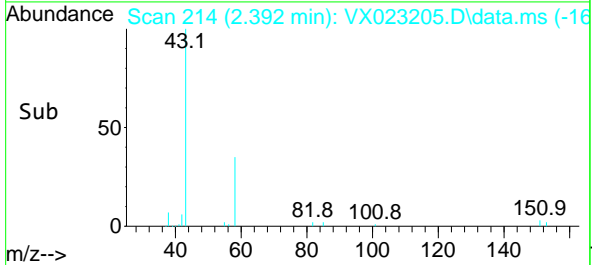
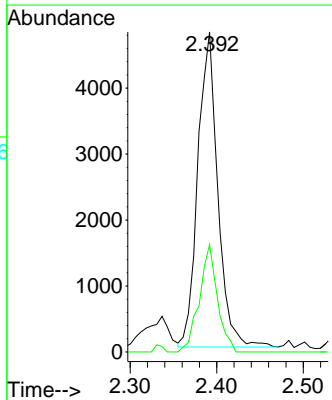
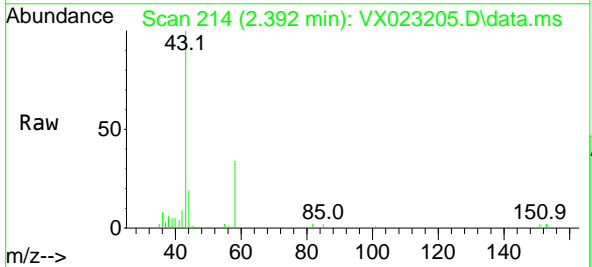
Instrument :
 MSVOA_X
 ClientSampled :

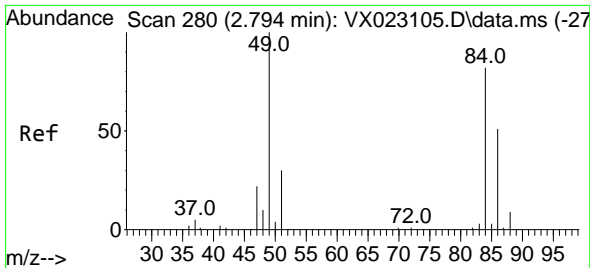
Tgt Ion: 56 Resp: 130
 Ion Ratio Lower Upper
 56 100
 55 0.0 56.4 84.6#



#16
 Acetone
 Concen: 6.318 ug/l
 RT: 2.392 min Scan# 214
 Delta R.T. -0.000 min
 Lab File: VX023205.D
 Acq: 08 Jul 2021 17:26

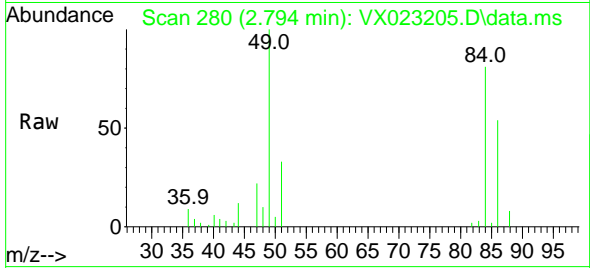
Tgt Ion: 43 Resp: 7658
 Ion Ratio Lower Upper
 43 100
 58 34.1 27.8 41.8





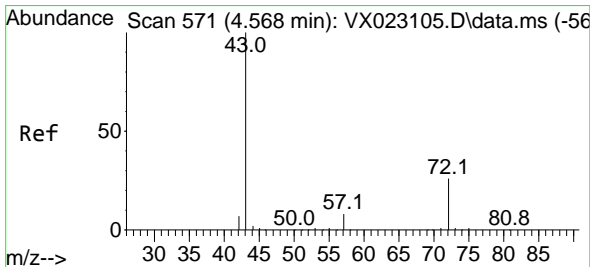
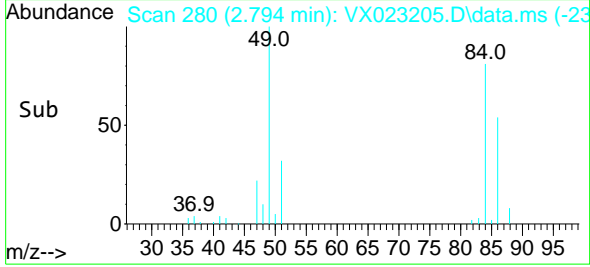
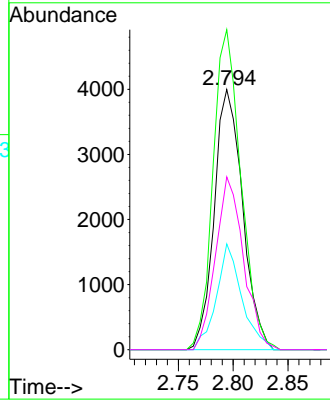
#20
 Methylene Chloride
 Concen: 2.760 ug/l
 RT: 2.794 min Scan# 280
 Delta R.T. 0.000 min
 Lab File: VX023205.D
 Acq: 08 Jul 2021 17:26

Instrument :
 MSVOA_X
 ClientSampled :

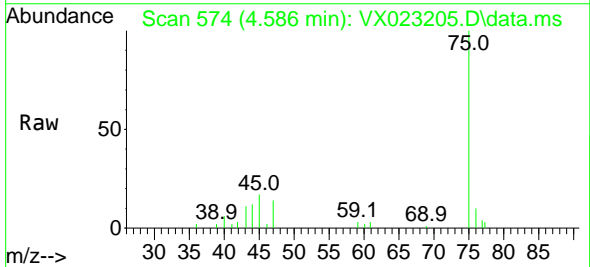


Tgt Ion: 84 Resp: 7203

Ion	Ratio	Lower	Upper
84	100		
49	123.0	88.6	132.8
51	40.6	27.0	40.6#
86	66.4	50.3	75.5

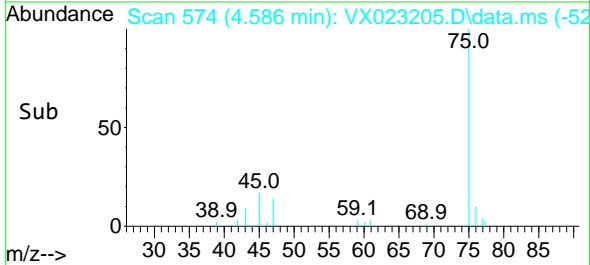
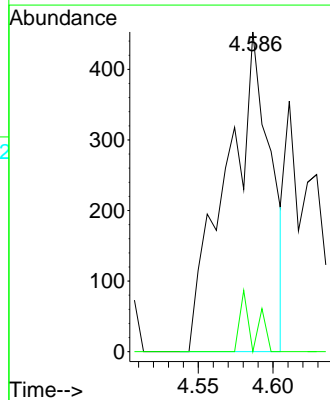


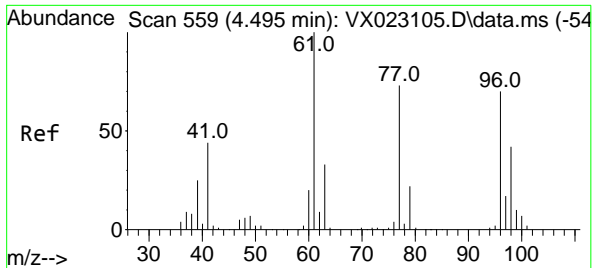
#25
 2-Butanone
 Concen: 0.511 ug/l
 RT: 4.586 min Scan# 574
 Delta R.T. 0.018 min
 Lab File: VX023205.D
 Acq: 08 Jul 2021 17:26



Tgt Ion: 43 Resp: 934

Ion	Ratio	Lower	Upper
43	100		
72	0.0	23.7	35.5#

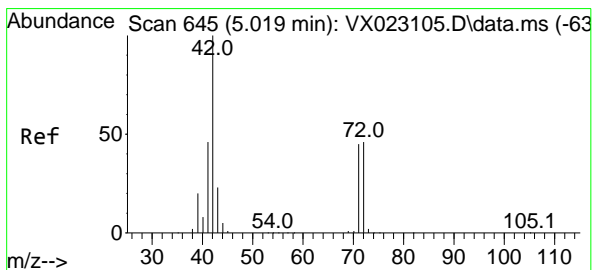
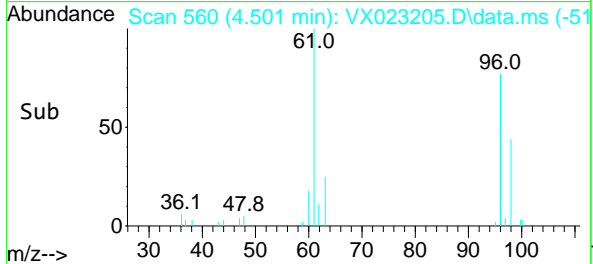
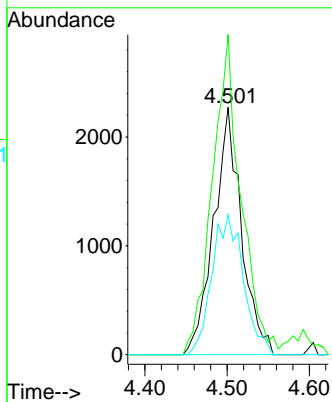
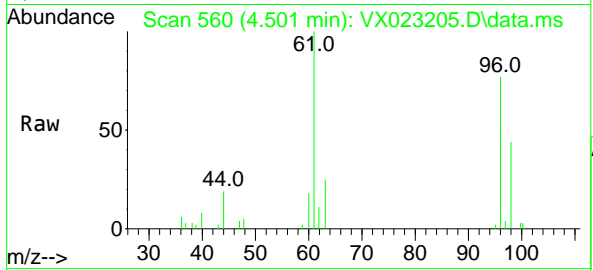




#27
 cis-1,2-Dichloroethene
 Concen: 1.997 ug/l
 RT: 4.501 min Scan# 560
 Delta R.T. 0.006 min
 Lab File: VX023205.D
 Acq: 08 Jul 2021 17:26

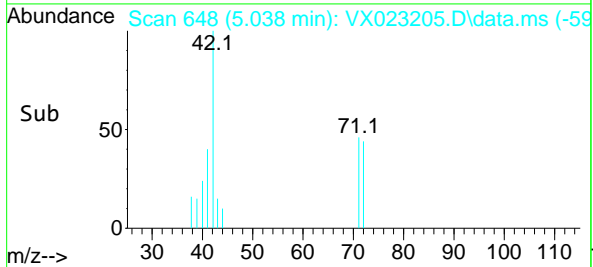
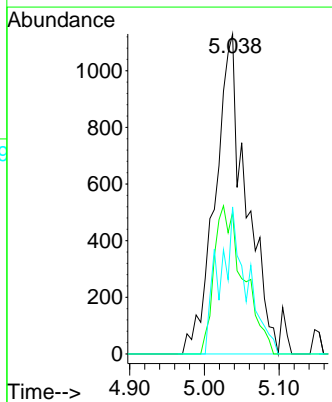
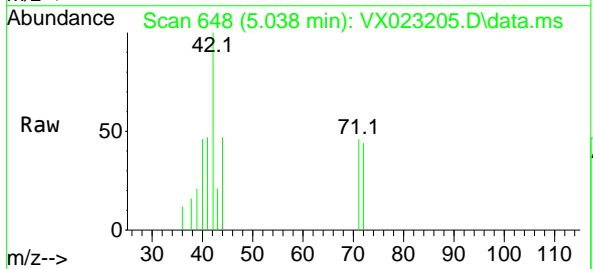
Instrument :
 MSVOA_X
 ClientSampled :

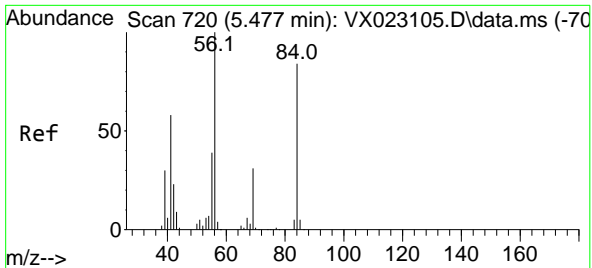
Tgt Ion	Resp	Lower	Upper
96	5309		
96	100		
61	134.1	0.0	285.6
98	64.5	0.0	129.6



#29
 Tetrahydrofuran
 Concen: 2.769 ug/l
 RT: 5.038 min Scan# 648
 Delta R.T. 0.019 min
 Lab File: VX023205.D
 Acq: 08 Jul 2021 17:26

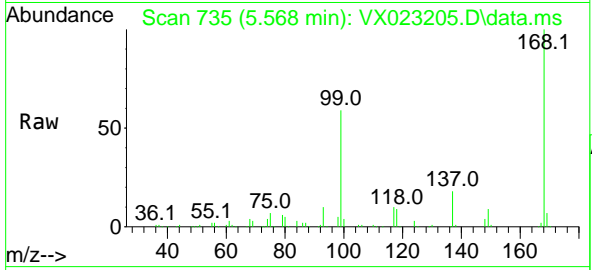
Tgt Ion	Resp	Lower	Upper
42	3253		
42	100		
72	0.0	41.7	62.5#
71	31.5	38.4	57.6#



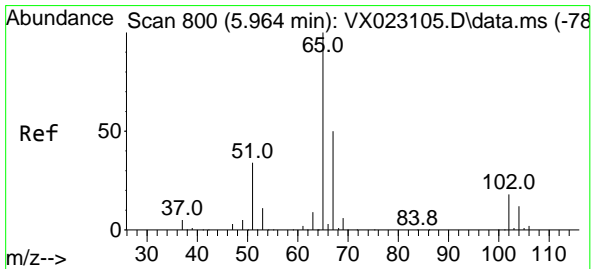
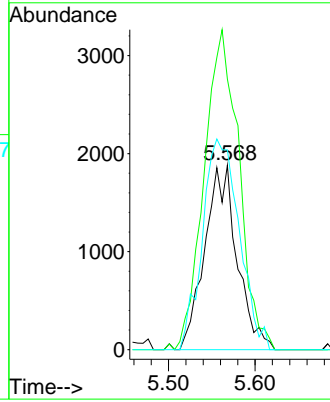
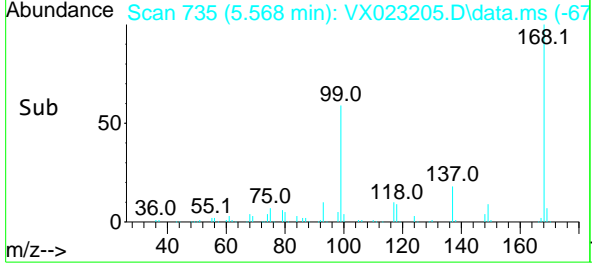


#31
 Cyclohexane
 Concen: 1.329 ug/l
 RT: 5.568 min Scan# 735
 Delta R.T. 0.091 min
 Lab File: VX023205.D
 Acq: 08 Jul 2021 17:26

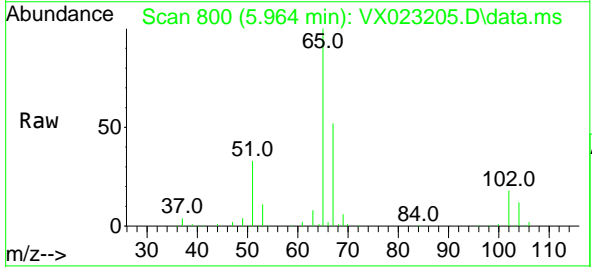
Instrument :
 MSVOA_X
 ClientSampled :



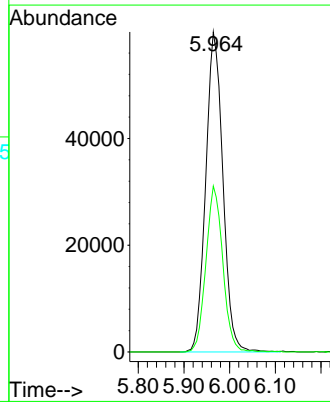
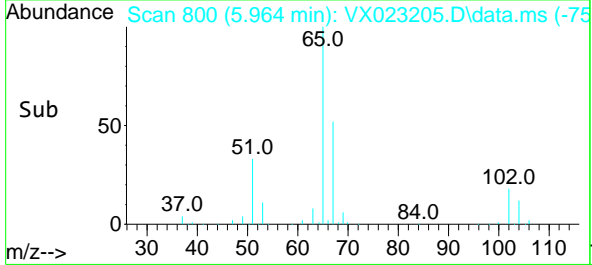
Tgt Ion: 56 Resp: 4874
 Ion Ratio Lower Upper
 56 100
 69 146.7 25.3 37.9#
 84 108.4 71.4 107.0#

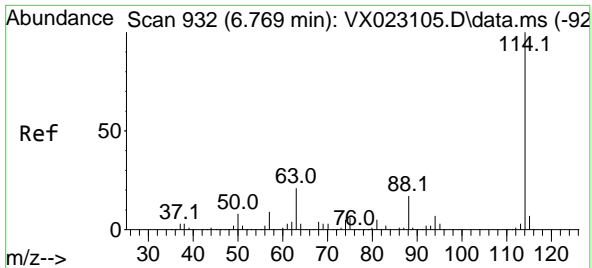


#33
 1,2-Dichloroethane-d4
 Concen: 50.977 ug/l
 RT: 5.964 min Scan# 800
 Delta R.T. 0.000 min
 Lab File: VX023205.D
 Acq: 08 Jul 2021 17:26



Tgt Ion: 65 Resp: 156170
 Ion Ratio Lower Upper
 65 100
 67 50.9 0.0 105.4



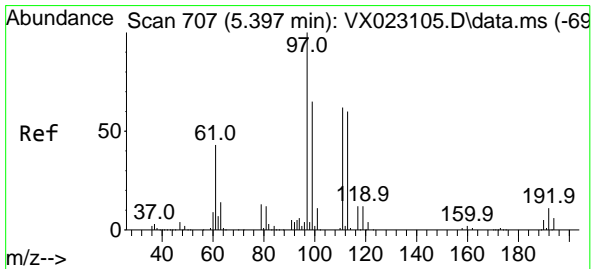
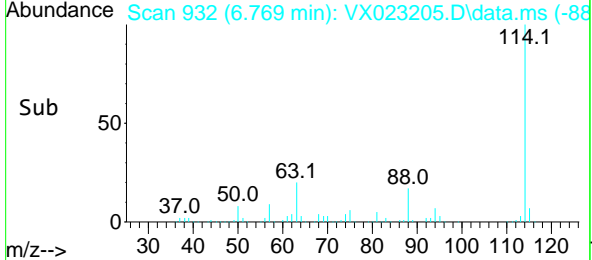
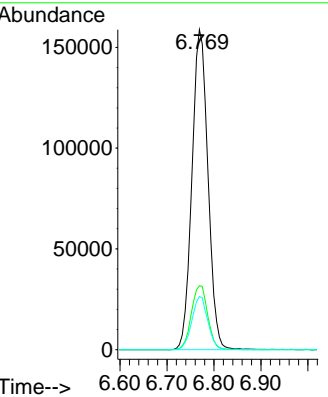
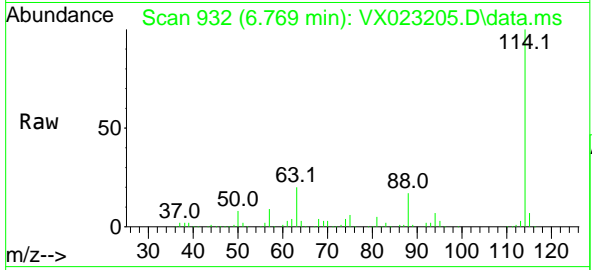


#34
 1,4-Difluorobenzene
 Concen: 50.000 ug/l
 RT: 6.769 min Scan# 932
 Delta R.T. -0.000 min
 Lab File: VX023205.D
 Acq: 08 Jul 2021 17:26

Instrument :
 MSVOA_X
 ClientSampled :

Tgt Ion:114 Resp: 374862

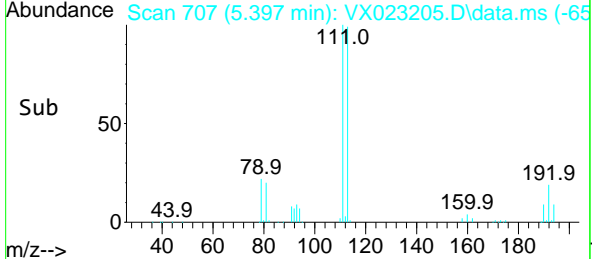
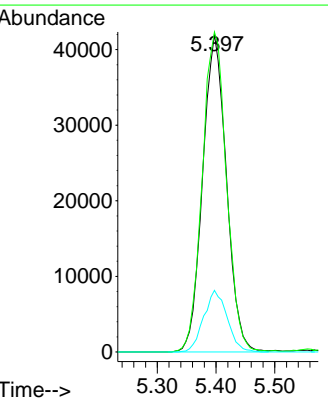
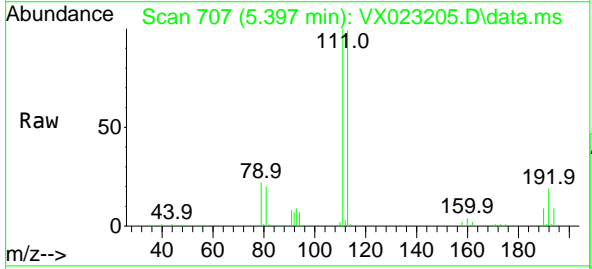
Ion	Ratio	Lower	Upper
114	100		
63	20.0	0.0	40.8
88	16.6	0.0	32.8

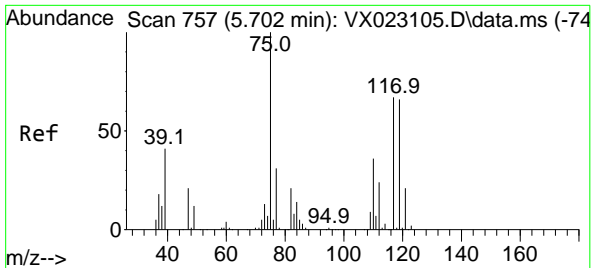


#35
 Dibromofluoromethane
 Concen: 48.670 ug/l
 RT: 5.397 min Scan# 707
 Delta R.T. 0.000 min
 Lab File: VX023205.D
 Acq: 08 Jul 2021 17:26

Tgt Ion:113 Resp: 117815

Ion	Ratio	Lower	Upper
113	100		
111	103.0	81.9	122.9
192	19.2	16.7	25.1

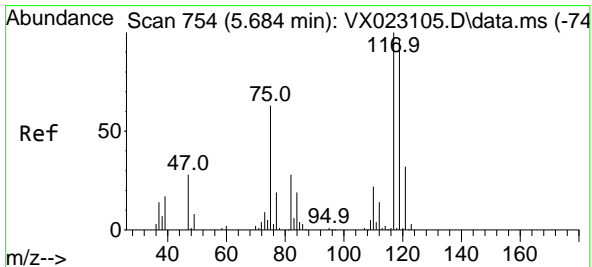
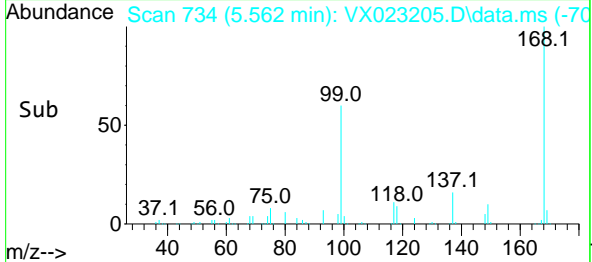
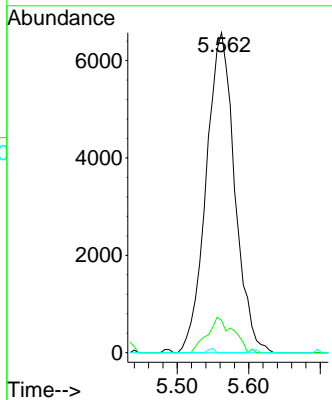
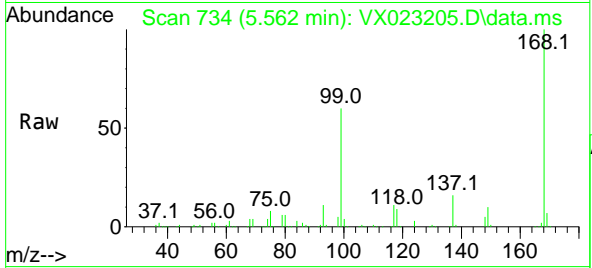




#36
 1,1-Dichloropropene
 Concen: 5.445 ug/l
 RT: 5.562 min Scan# 734
 Delta R.T. -0.140 min
 Lab File: VX023205.D
 Acq: 08 Jul 2021 17:26

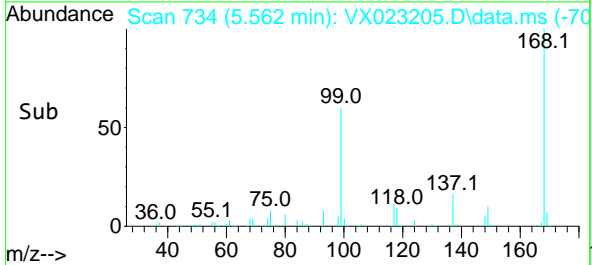
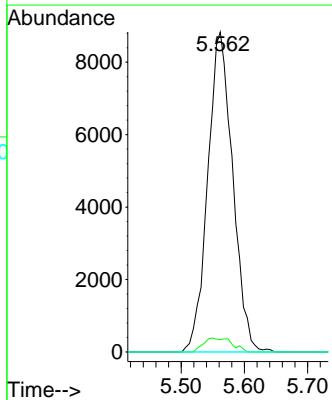
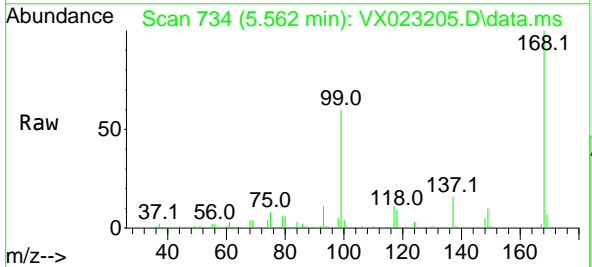
Instrument :
 MSVOA_X
 ClientSampled :

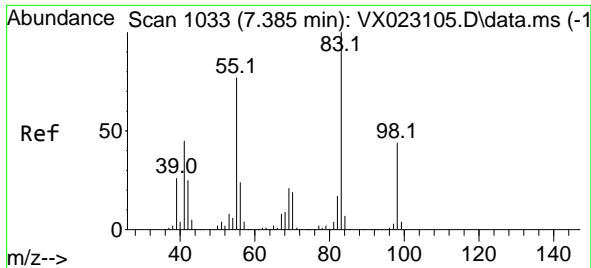
Tgt Ion	Resp	Lower	Upper
75	18196		
75	100		
110	10.0	18.1	54.4#
77	0.3	25.3	37.9#



#38
 Carbon Tetrachloride
 Concen: 6.929 ug/l
 RT: 5.562 min Scan# 734
 Delta R.T. -0.122 min
 Lab File: VX023205.D
 Acq: 08 Jul 2021 17:26

Tgt Ion	Resp	Lower	Upper
117	24170		
117	100		
119	3.8	76.2	114.2#
121	0.0	24.8	37.2#

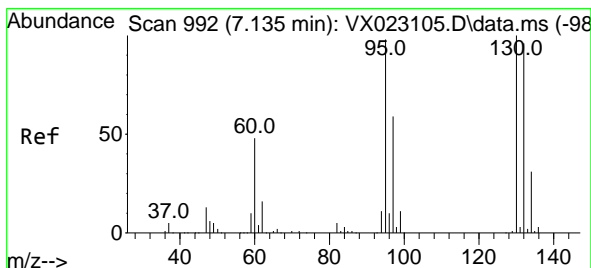
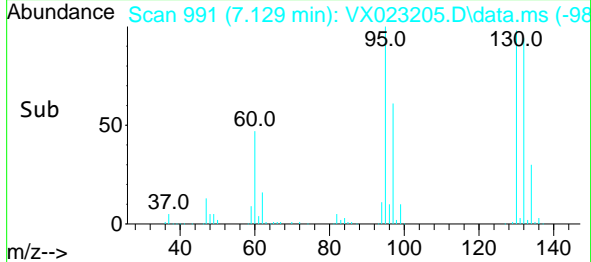
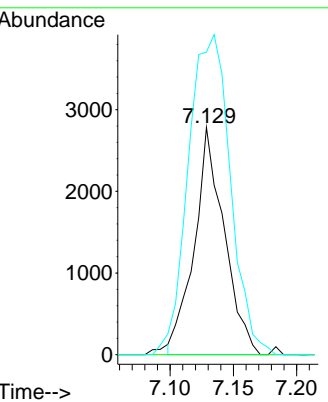
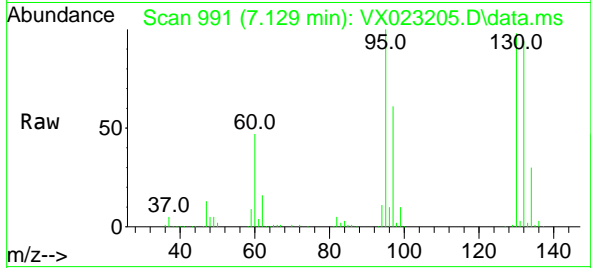




#39
 Methylcyclohexane
 Concen: 1.170 ug/l
 RT: 7.129 min Scan# 991
 Delta R.T. -0.256 min
 Lab File: VX023205.D
 Acq: 08 Jul 2021 17:26

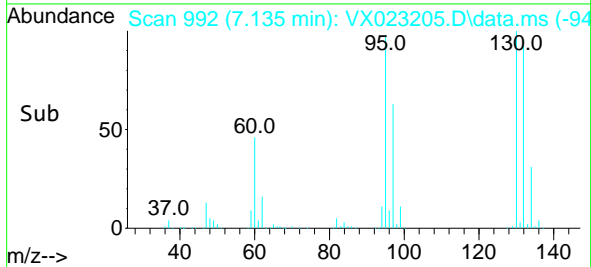
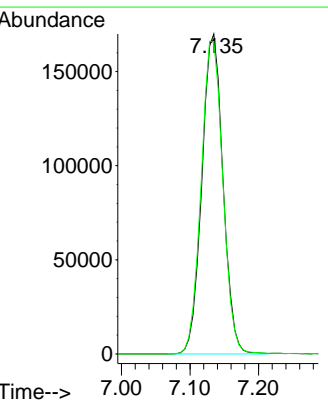
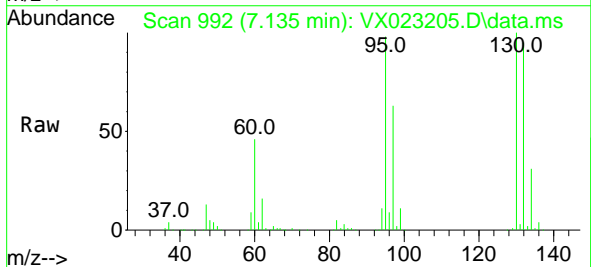
Instrument :
 MSVOA_X
 ClientSampled :

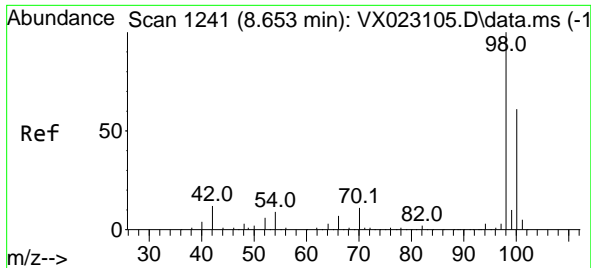
Tgt Ion	Resp	Lower	Upper
83	4571		
55	0.0	58.9	88.3#
98	130.0	38.1	57.1#



#44
 Trichloroethene
 Concen: 131.806 ug/l
 RT: 7.135 min Scan# 992
 Delta R.T. -0.000 min
 Lab File: VX023205.D
 Acq: 08 Jul 2021 17:26

Tgt Ion	Resp	Lower	Upper
130	362779		
95	97.6	0.0	198.0

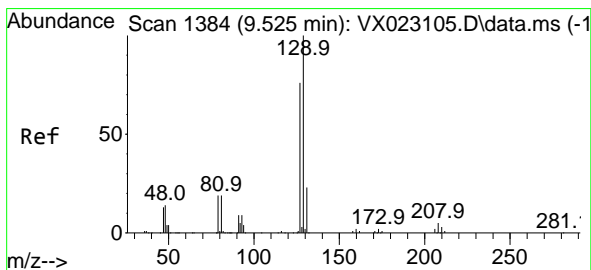
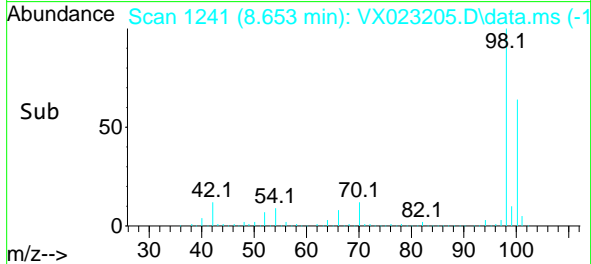
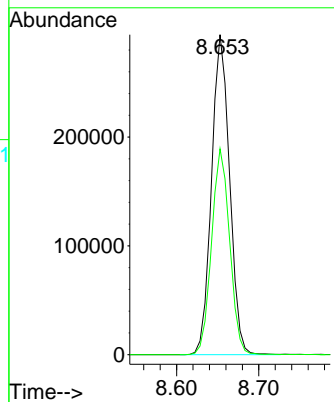
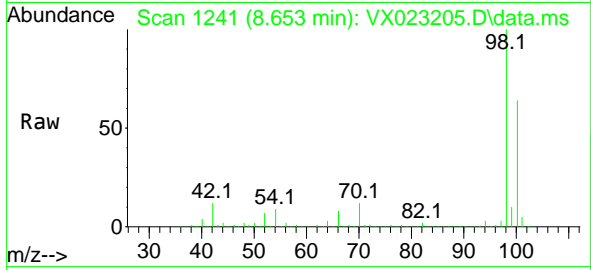




#50
 Toluene-d8
 Concen: 49.566 ug/l
 RT: 8.653 min Scan# 1241
 Delta R.T. -0.000 min
 Lab File: VX023205.D
 Acq: 08 Jul 2021 17:26

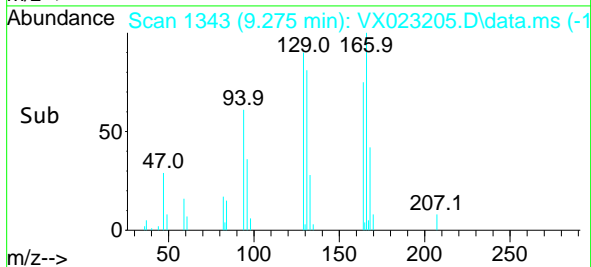
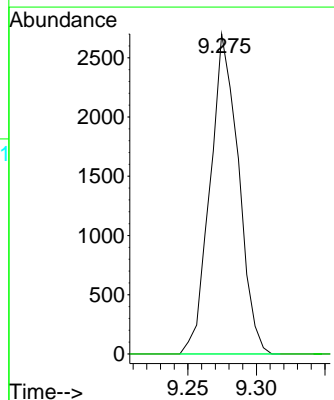
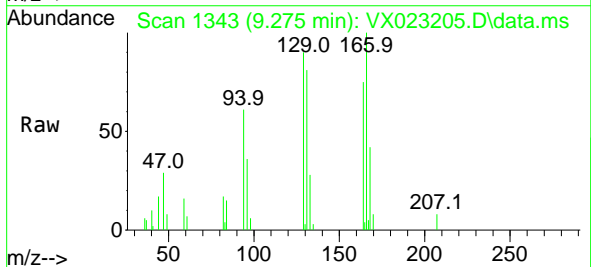
Instrument :
 MSVOA_X
 ClientSampled :

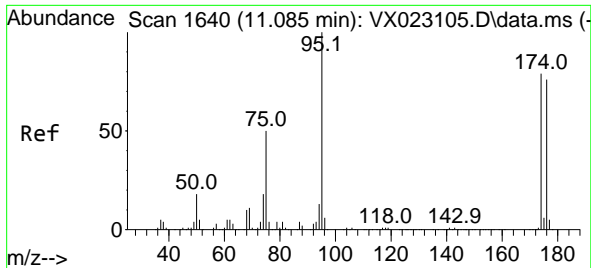
Tgt Ion: 98 Resp: 447574
 Ion Ratio Lower Upper
 98 100
 100 64.4 51.9 77.9



#60
 Dibromochloromethane
 Concen: 4.351 ug/l
 RT: 9.275 min Scan# 1343
 Delta R.T. -0.250 min
 Lab File: VX023205.D
 Acq: 08 Jul 2021 17:26

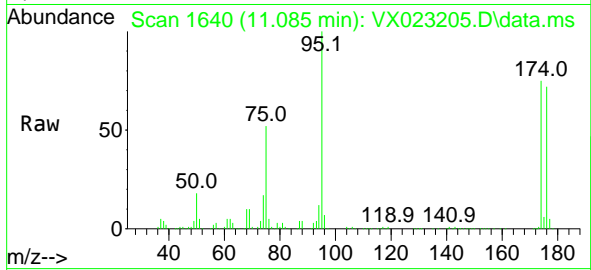
Tgt Ion: 129 Resp: 3889
 Ion Ratio Lower Upper
 129 100
 127 0.0 38.4 115.2#



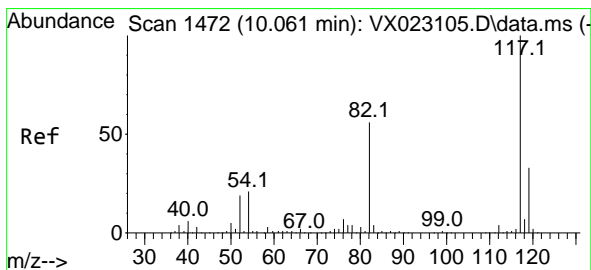
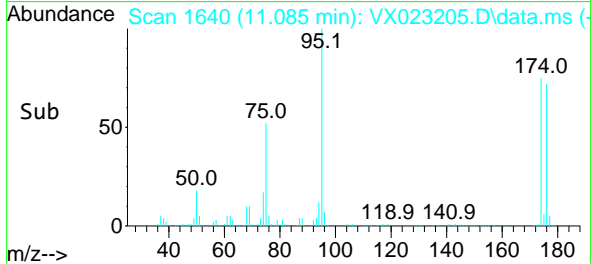
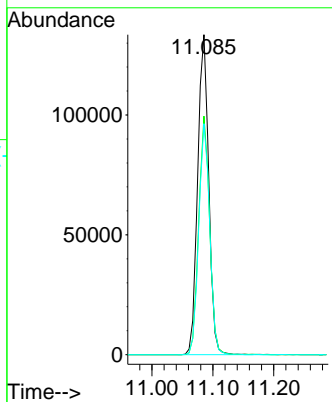


#62
 4-Bromofluorobenzene
 Concen: 48.386 ug/l
 RT: 11.085 min Scan# 1640
 Delta R.T. 0.000 min
 Lab File: VX023205.D
 Acq: 08 Jul 2021 17:26

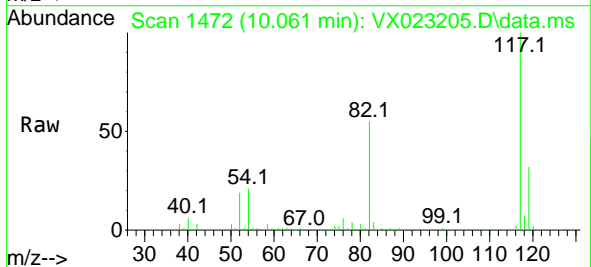
Instrument :
 MSVOA_X
 ClientSampled :



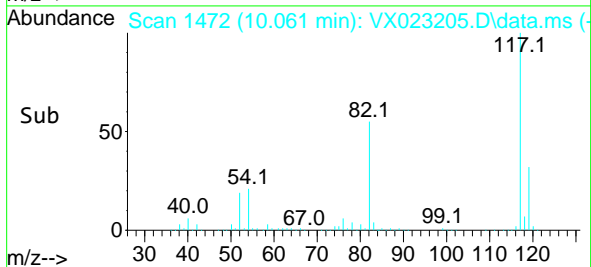
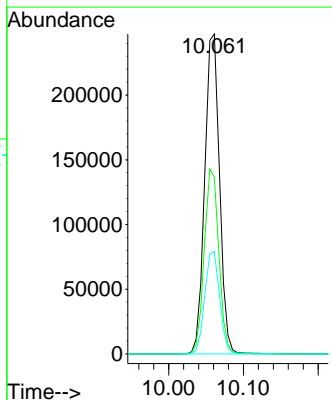
Tgt Ion: 95 Resp: 168674
 Ion Ratio Lower Upper
 95 100
 174 73.6 0.0 154.6
 176 71.6 0.0 155.8

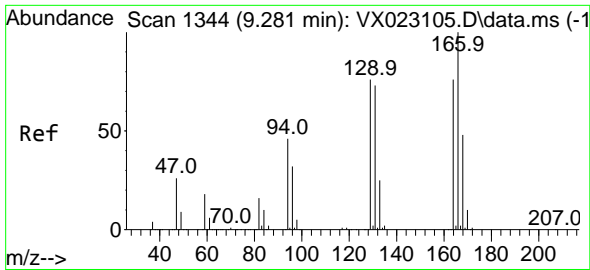


#63
 Chlorobenzene-d5
 Concen: 50.000 ug/l
 RT: 10.061 min Scan# 1472
 Delta R.T. 0.000 min
 Lab File: VX023205.D
 Acq: 08 Jul 2021 17:26



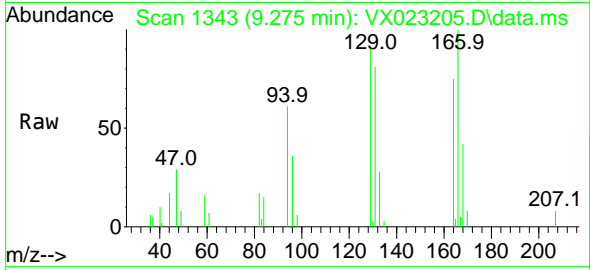
Tgt Ion: 117 Resp: 341020
 Ion Ratio Lower Upper
 117 100
 82 55.2 47.4 71.2
 119 32.0 26.6 39.8



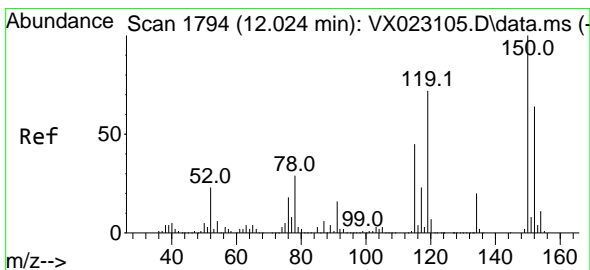
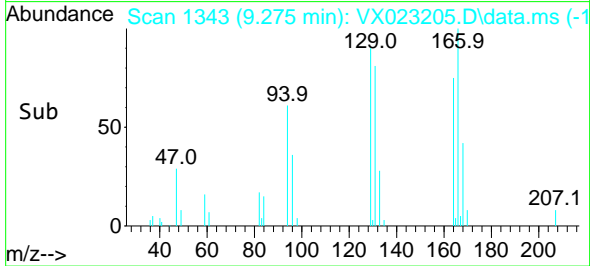
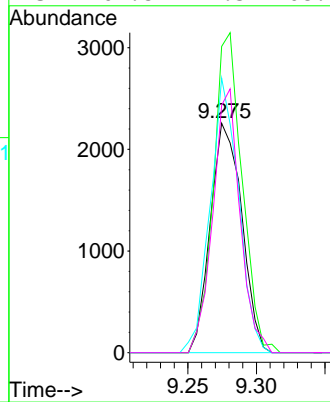


#64
 Tetrachloroethene
 Concen: 1.321 ug/l
 RT: 9.275 min Scan# 1343
 Delta R.T. -0.006 min
 Lab File: VX023205.D
 Acq: 08 Jul 2021 17:26

Instrument :
 MSVOA_X
 ClientSampled :

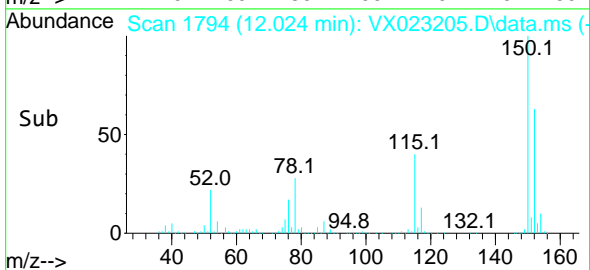
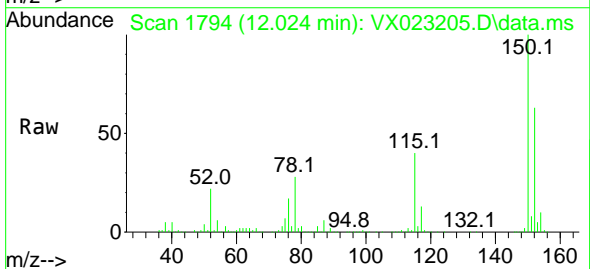
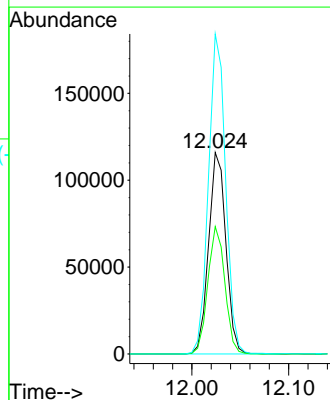


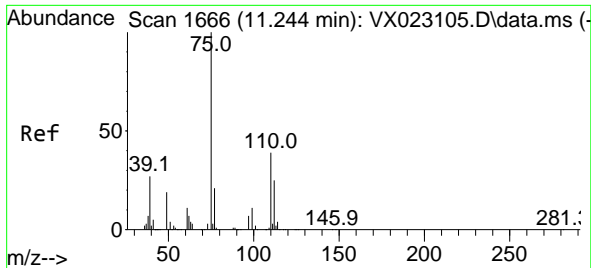
Tgt Ion:164 Resp: 3592
 Ion Ratio Lower Upper
 164 100
 166 133.4 103.4 155.2
 129 119.6 70.8 106.2#
 131 107.8 72.5 108.7



#72
 1,4-Dichlorobenzene-d4
 Concen: 50.000 ug/l
 RT: 12.024 min Scan# 1794
 Delta R.T. 0.000 min
 Lab File: VX023205.D
 Acq: 08 Jul 2021 17:26

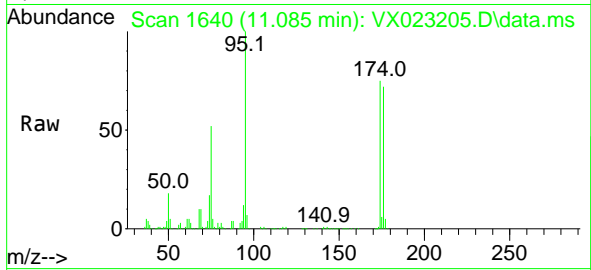
Tgt Ion:152 Resp: 144425
 Ion Ratio Lower Upper
 152 100
 115 62.1 41.1 123.3
 150 157.1 0.0 349.0



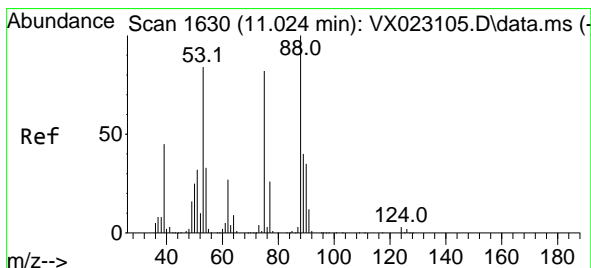
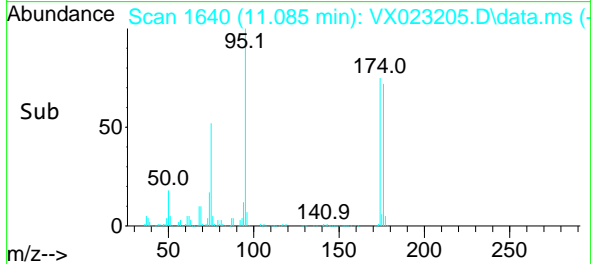
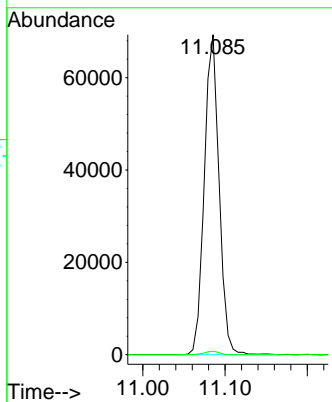


#76
 1,2,3-Trichloropropane
 Concen: 29.742 ug/l
 RT: 11.085 min Scan# 1640
 Delta R.T. -0.159 min
 Lab File: VX023205.D
 Acq: 08 Jul 2021 17:26

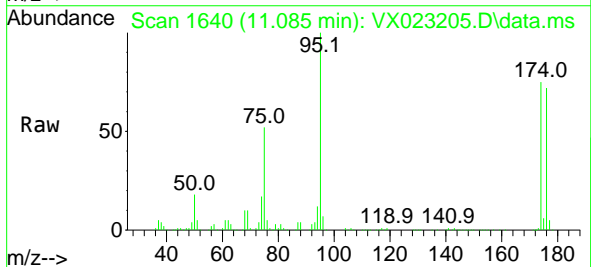
Instrument :
 MSVOA_X
 ClientSampled :



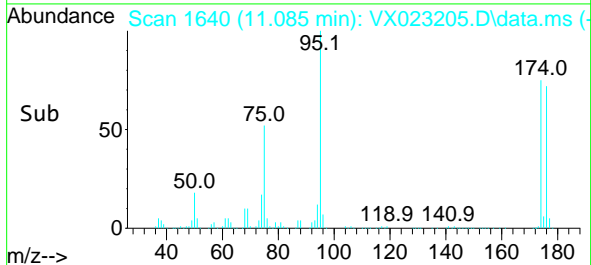
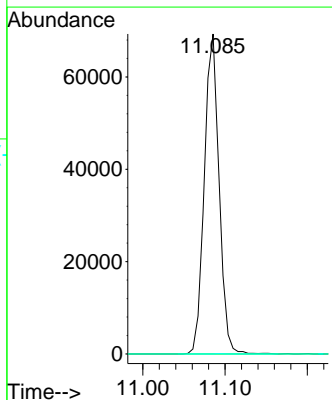
Tgt Ion: 75 Resp: 86439
 Ion Ratio Lower Upper
 75 100
 77 1.0 19.1 57.5#

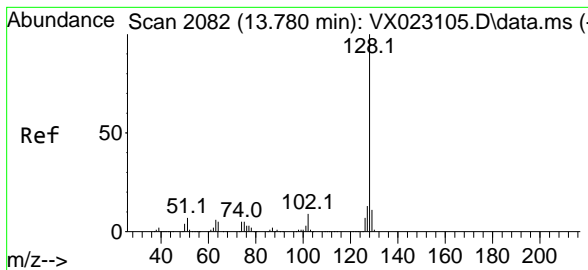


#81
 trans-1,4-Dichloro-2-butene
 Concen: 79.898 ug/l
 RT: 11.085 min Scan# 1640
 Delta R.T. 0.061 min
 Lab File: VX023205.D
 Acq: 08 Jul 2021 17:26



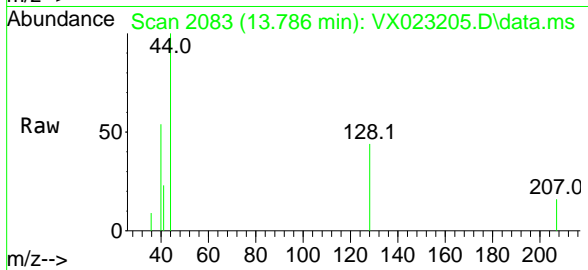
Tgt Ion: 75 Resp: 86439
 Ion Ratio Lower Upper
 75 100
 53 0.0 74.5 111.7#
 89 0.0 37.9 56.9#





#95
 Naphthalene
 Concen: 1.303 ug/l
 RT: 13.786 min Scan# 2083
 Delta R.T. 0.006 min
 Lab File: VX023205.D
 Acq: 08 Jul 2021 17:26

Instrument :
 MSVOA_X
 ClientSampled :



Tgt Ion:128 Resp: 298

Ion	Ratio	Lower	Upper
128	100		
127	0.0	10.3	15.5#
129	0.0	8.8	13.2#

