

Data Path : Z:\voasrv\HPCHEM1\MSVOA\_X\Data\VX070925\  
 Data File : VX046921.D  
 Acq On : 09 Jul 2025 10:15  
 Operator : JC/MD  
 Sample : VX0709MBL01  
 Misc : 5.00g/10mL/100uL/5./MSVOA\_X/MEOH  
 ALS Vial : 3 Sample Multiplier: 1

**Instrument :**  
 MSVOA\_X  
**ClientSampleId :**  
 VX0709MBL01

Quant Time: Jul 10 02:54:50 2025  
 Quant Method : Z:\voasrv\HPCHEM1\MSVOA\_X\Method\82X070225W.M  
 Quant Title : SW846 8260  
 QLast Update : Thu Jul 10 02:52:52 2025  
 Response via : Initial Calibration

Compound	R.T.	QIon	Response	Conc	Units	Dev(Min)
Internal Standards						
1) Pentafluorobenzene	5.556	168	330948	50.000	ug/l	0.00
34) 1,4-Difluorobenzene	6.763	114	572860	50.000	ug/l	0.00
63) Chlorobenzene-d5	10.049	117	527826	50.000	ug/l	0.00
72) 1,4-Dichlorobenzene-d4	12.018	152	258108	50.000	ug/l	0.00
System Monitoring Compounds						
33) 1,2-Dichloroethane-d4	5.958	65	221728	50.714	ug/l	0.00
Spiked Amount	50.000	Range	78 - 117	Recovery	=	101.420%
35) Dibromofluoromethane	5.391	113	190171	48.905	ug/l	0.00
Spiked Amount	50.000	Range	75 - 124	Recovery	=	97.800%
50) Toluene-d8	8.647	98	695530	50.695	ug/l	0.00
Spiked Amount	50.000	Range	92 - 112	Recovery	=	101.400%
62) 4-Bromofluorobenzene	11.079	95	260483	49.956	ug/l	0.00
Spiked Amount	50.000	Range	83 - 123	Recovery	=	99.920%

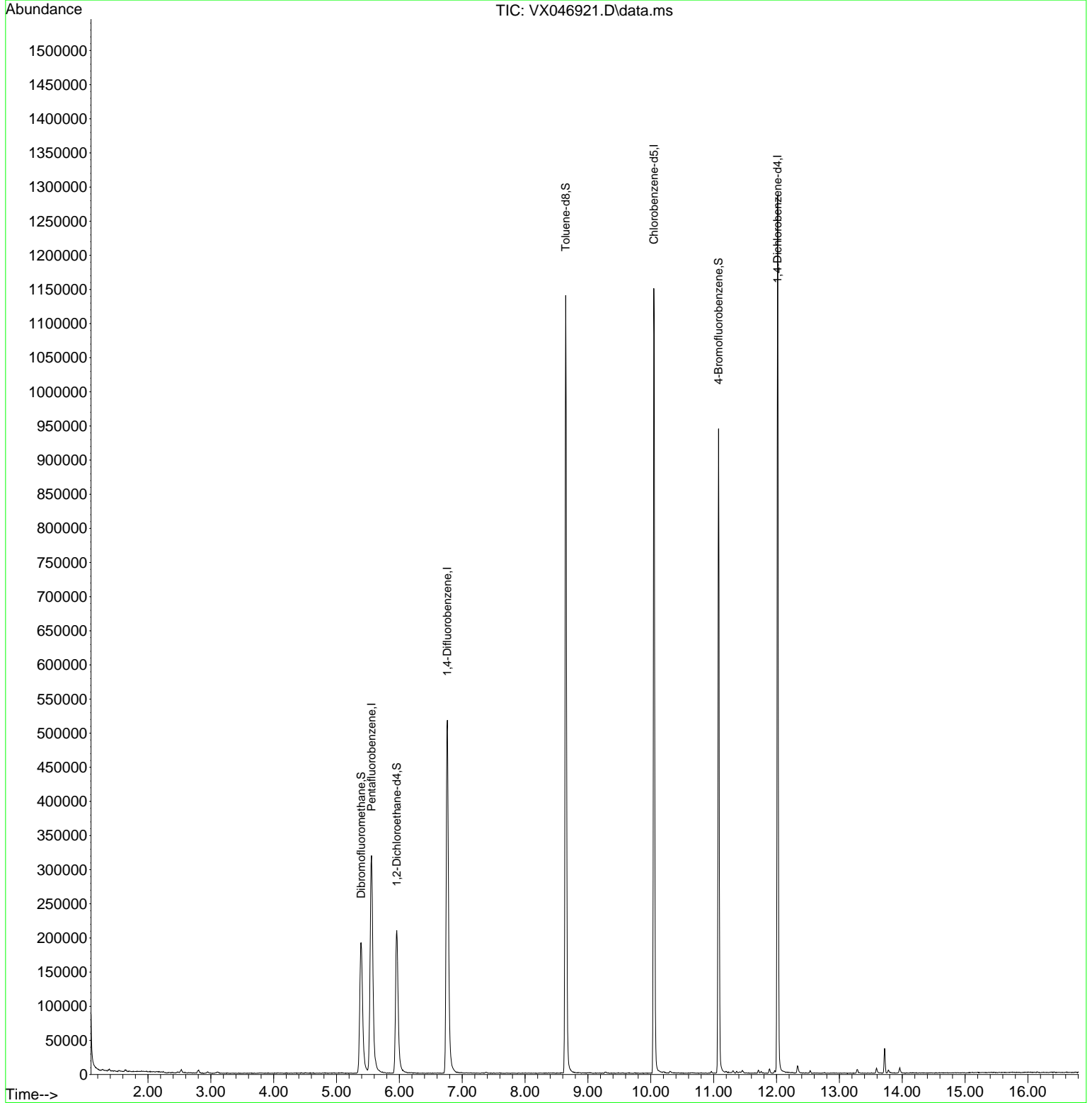
Target Compounds Qvalue

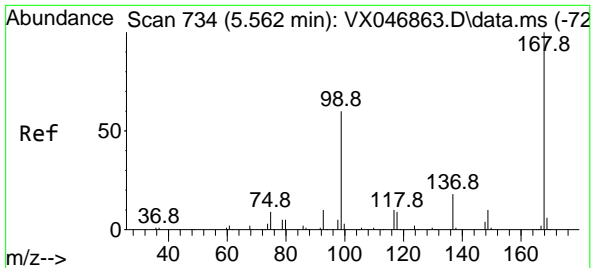
(#) = qualifier out of range (m) = manual integration (+) = signals summed

Data Path : Z:\voasrv\HPCHEM1\MSVOA\_X\Data\VX070925\  
 Data File : VX046921.D  
 Acq On : 09 Jul 2025 10:15  
 Operator : JC/MD  
 Sample : VX0709MBL01  
 Misc : 5.00g/10mL/100uL/5./MSVOA\_X/MEOH  
 ALS Vial : 3 Sample Multiplier: 1

Instrument :  
 MSVOA\_X  
 ClientSampleId :  
 VX0709MBL01

Quant Time: Jul 10 02:54:50 2025  
 Quant Method : Z:\voasrv\HPCHEM1\MSVOA\_X\Method\82X070225W.M  
 Quant Title : SW846 8260  
 QLast Update : Thu Jul 10 02:52:52 2025  
 Response via : Initial Calibration

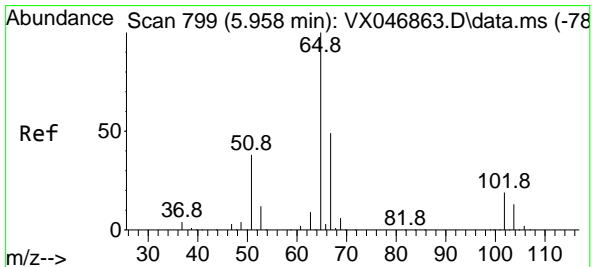
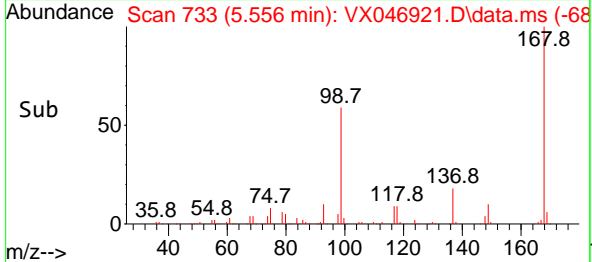
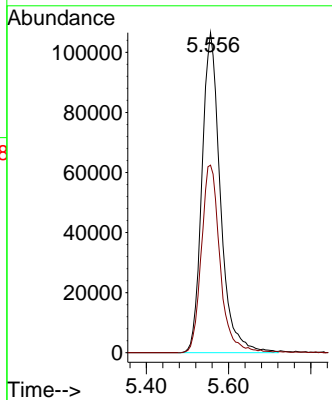
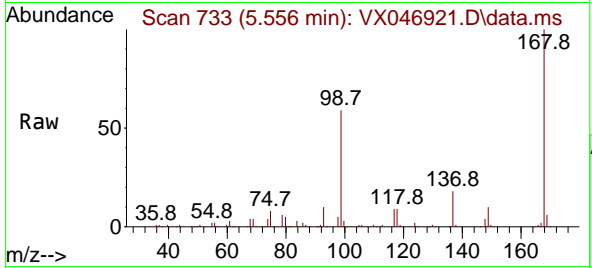




#1  
 Pentafluorobenzene  
 Concen: 50.000 ug/l  
 RT: 5.556 min Scan# 711  
 Delta R.T. -0.006 min  
 Lab File: VX046921.D  
 Acq: 09 Jul 2025 10:15

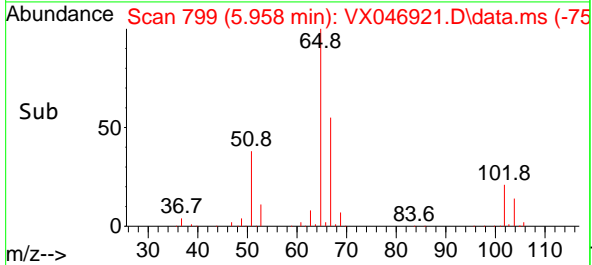
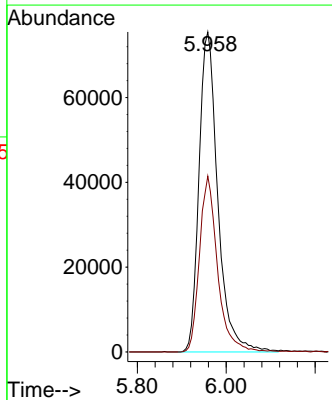
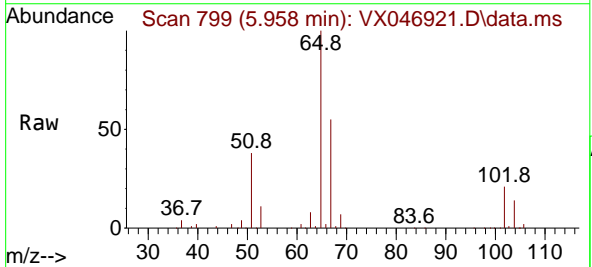
Instrument :  
 MSVOA\_X  
 ClientSampleId :  
 VX0709MBL01

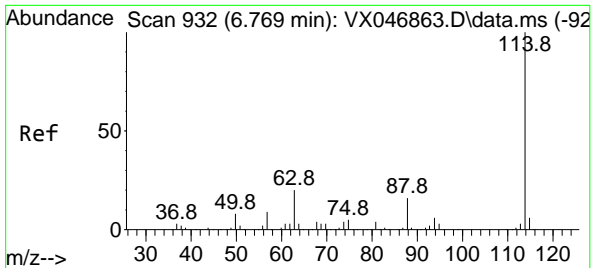
Tgt Ion:168 Resp: 330948  
 Ion Ratio Lower Upper  
 168 100  
 99 58.6 48.8 73.2



#33  
 1,2-Dichloroethane-d4  
 Concen: 50.714 ug/l  
 RT: 5.958 min Scan# 799  
 Delta R.T. -0.000 min  
 Lab File: VX046921.D  
 Acq: 09 Jul 2025 10:15

Tgt Ion: 65 Resp: 221728  
 Ion Ratio Lower Upper  
 65 100  
 67 53.0 0.0 105.2



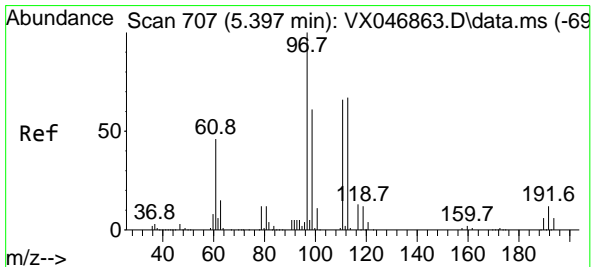
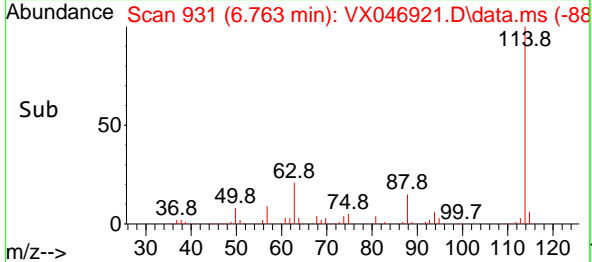
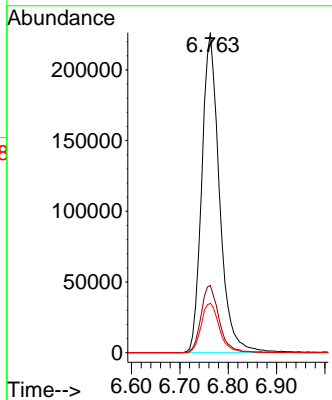
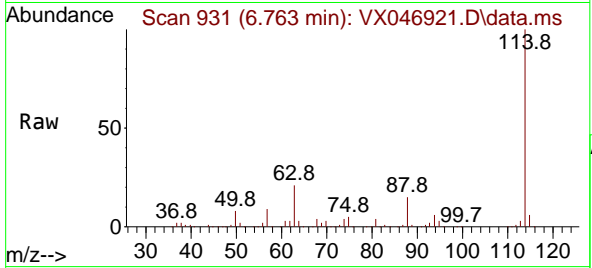


#34  
 1,4-Difluorobenzene  
 Concen: 50.000 ug/l  
 RT: 6.763 min Scan# 91  
 Delta R.T. -0.006 min  
 Lab File: VX046921.D  
 Acq: 09 Jul 2025 10:15

Instrument :  
 MSVOA\_X  
 ClientSampleId :  
 VX0709MBL01

Tgt Ion:114 Resp: 572860

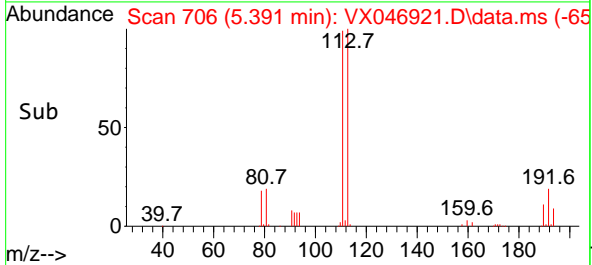
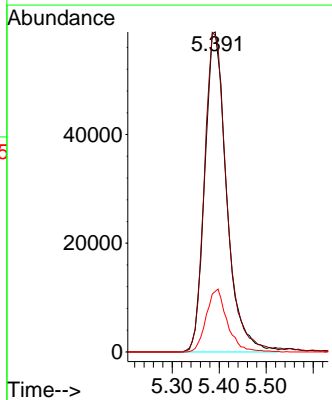
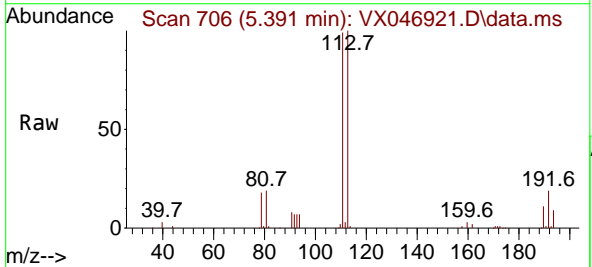
Ion	Ratio	Lower	Upper
114	100		
63	21.0	0.0	40.4
88	15.5	0.0	31.0

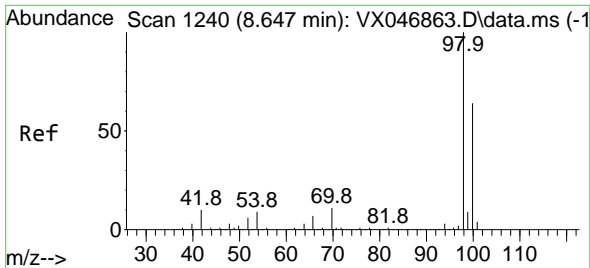


#35  
 Dibromofluoromethane  
 Concen: 48.905 ug/l  
 RT: 5.391 min Scan# 706  
 Delta R.T. -0.006 min  
 Lab File: VX046921.D  
 Acq: 09 Jul 2025 10:15

Tgt Ion:113 Resp: 190171

Ion	Ratio	Lower	Upper
113	100		
111	101.2	81.2	121.8
192	18.9	15.3	22.9

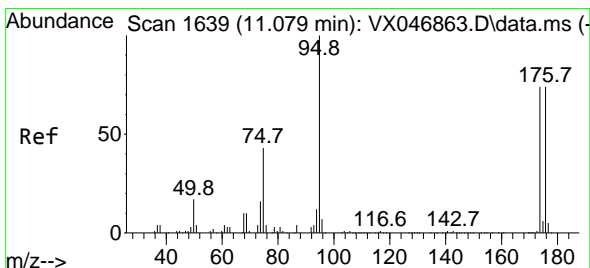
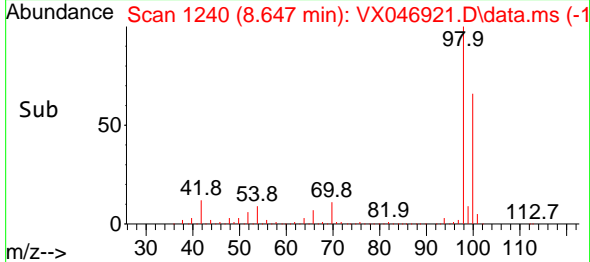
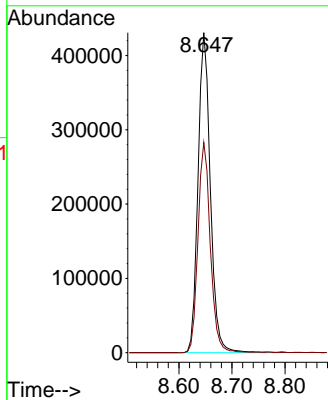
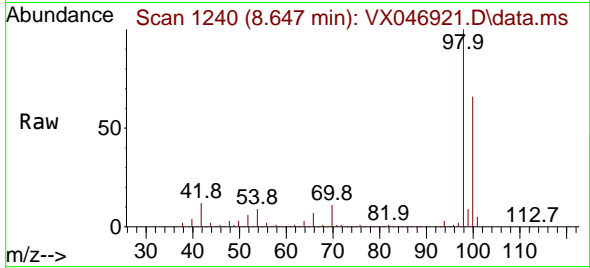




#50  
 Toluene-d8  
 Concen: 50.695 ug/l  
 RT: 8.647 min Scan# 11  
 Delta R.T. -0.000 min  
 Lab File: VX046921.D  
 Acq: 09 Jul 2025 10:15

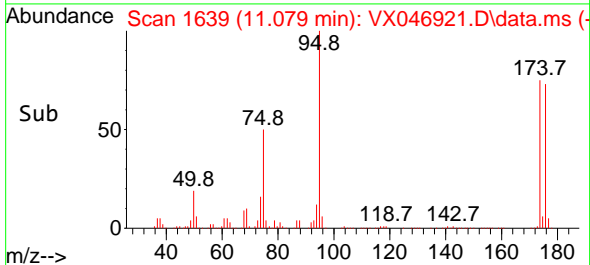
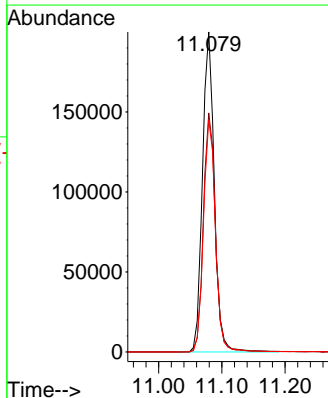
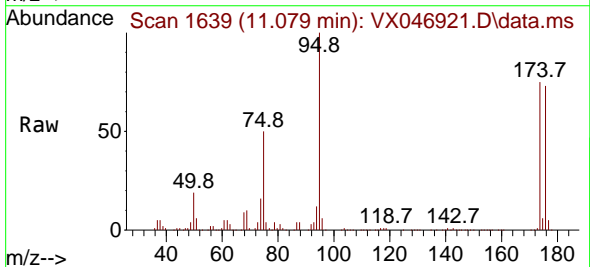
Instrument :  
 MSVOA\_X  
 ClientSampleId :  
 VX0709MBL01

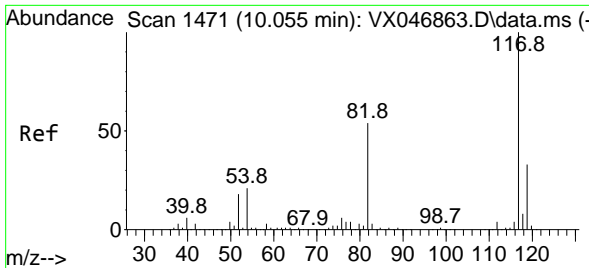
Tgt Ion: 98 Resp: 695530  
 Ion Ratio Lower Upper  
 98 100  
 100 65.9 53.0 79.6



#62  
 4-Bromofluorobenzene  
 Concen: 49.956 ug/l  
 RT: 11.079 min Scan# 1639  
 Delta R.T. -0.000 min  
 Lab File: VX046921.D  
 Acq: 09 Jul 2025 10:15

Tgt Ion: 95 Resp: 260483  
 Ion Ratio Lower Upper  
 95 100  
 174 75.8 0.0 152.0  
 176 73.5 0.0 145.2



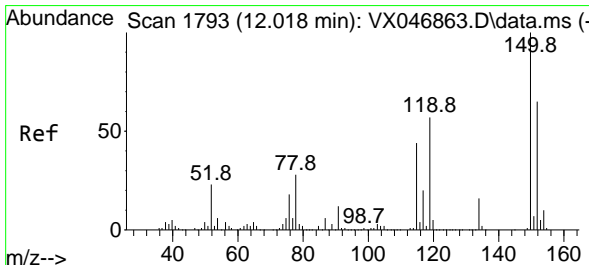
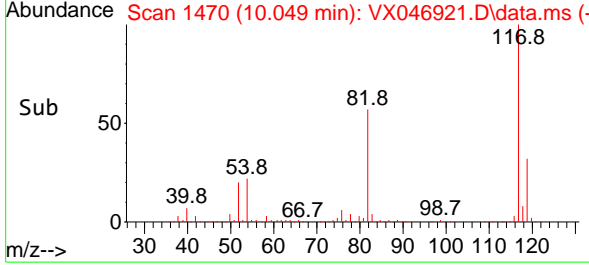
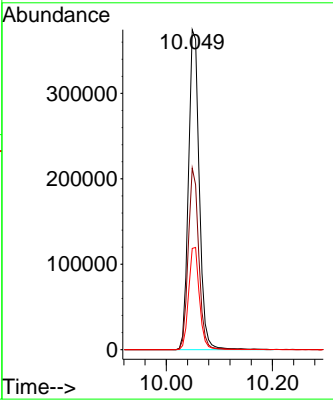
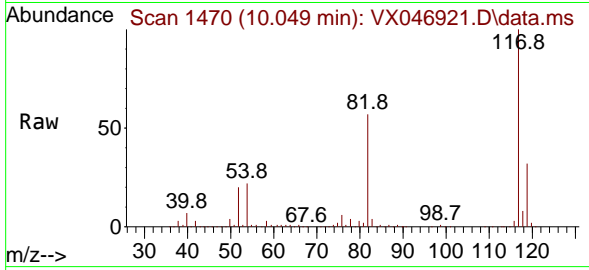


#63  
 Chlorobenzene-d5  
 Concen: 50.000 ug/l  
 RT: 10.049 min Scan# 1470  
 Delta R.T. -0.006 min  
 Lab File: VX046921.D  
 Acq: 09 Jul 2025 10:15

**Instrument :**  
 MSVOA\_X  
**ClientSampleId :**  
 VX0709MBL01

Tgt Ion:117 Resp: 527826

Ion	Ratio	Lower	Upper
117	100		
82	56.8	43.3	64.9
119	31.6	26.4	39.6



#72  
 1,4-Dichlorobenzene-d4  
 Concen: 50.000 ug/l  
 RT: 12.018 min Scan# 1793  
 Delta R.T. -0.000 min  
 Lab File: VX046921.D  
 Acq: 09 Jul 2025 10:15

Tgt Ion:152 Resp: 258108

Ion	Ratio	Lower	Upper
152	100		
115	61.0	42.4	127.1
150	157.3	0.0	349.2

