

Data Path : Z:\voasrv\HPCHEM1\MSVOA\_X\Data\VX070925\  
 Data File : VX046930.D  
 Acq On : 09 Jul 2025 14:27  
 Operator : JC/MD  
 Sample : IBLK  
 Misc : 5.0mL/MSVOA\_X/WATER  
 ALS Vial : 12 Sample Multiplier: 1

**Instrument :**  
 MSVOA\_X  
**ClientSampleId :**  
 IBLK

Quant Time: Jul 10 03:14:07 2025  
 Quant Method : Z:\voasrv\HPCHEM1\MSVOA\_X\Method\82X070225W.M  
 Quant Title : SW846 8260  
 QLast Update : Thu Jul 10 02:52:52 2025  
 Response via : Initial Calibration

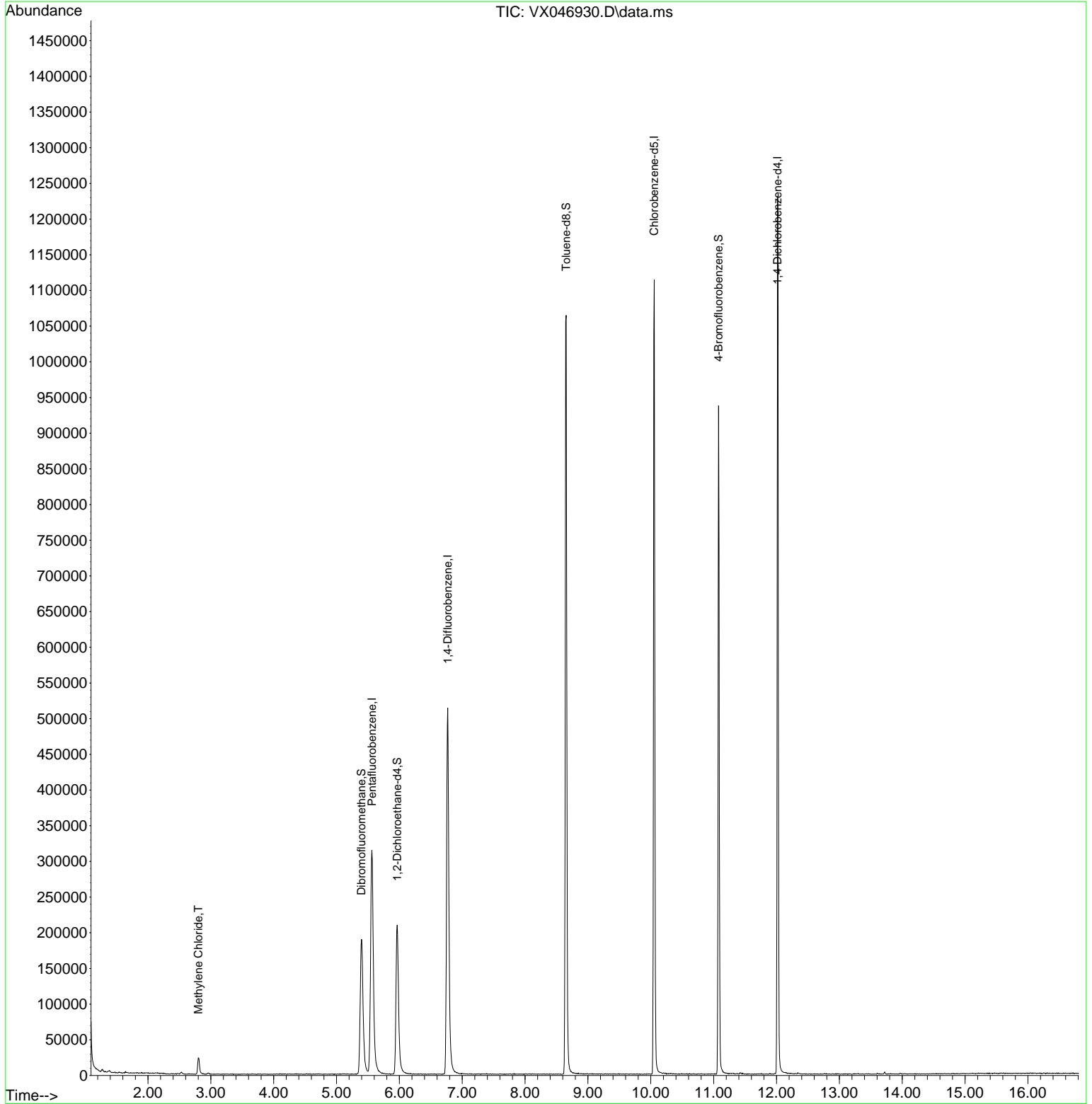
Compound	R.T.	QIon	Response	Conc	Units	Dev(Min)
-----						
Internal Standards						
1) Pentafluorobenzene	5.562	168	324866	50.000	ug/l	0.00
34) 1,4-Difluorobenzene	6.769	114	563541	50.000	ug/l	0.00
63) Chlorobenzene-d5	10.055	117	517518	50.000	ug/l	0.00
72) 1,4-Dichlorobenzene-d4	12.018	152	255473	50.000	ug/l	0.00
System Monitoring Compounds						
33) 1,2-Dichloroethane-d4	5.964	65	218062	50.809	ug/l	0.00
Spiked Amount	50.000	Range	78 - 117	Recovery	=	101.620%
35) Dibromofluoromethane	5.397	113	184593	48.255	ug/l	0.00
Spiked Amount	50.000	Range	75 - 124	Recovery	=	96.520%
50) Toluene-d8	8.653	98	675509	50.050	ug/l	0.00
Spiked Amount	50.000	Range	92 - 112	Recovery	=	100.100%
62) 4-Bromofluorobenzene	11.079	95	253820	49.483	ug/l	0.00
Spiked Amount	50.000	Range	83 - 123	Recovery	=	98.960%
Target Compounds						
20) Methylene Chloride	2.800	84	11677	2.962	ug/l	91
-----						

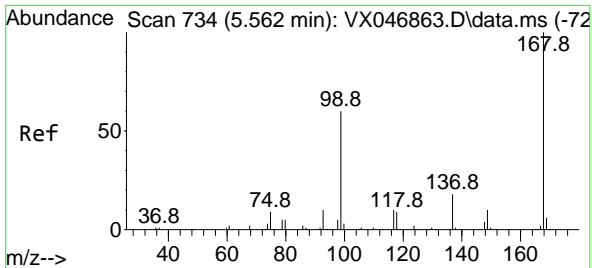
(#) = qualifier out of range (m) = manual integration (+) = signals summed

Data Path : Z:\voasrv\HPCHEM1\MSVOA\_X\Data\VX070925\  
 Data File : VX046930.D  
 Acq On : 09 Jul 2025 14:27  
 Operator : JC/MD  
 Sample : IBLK  
 Misc : 5.0mL/MSVOA\_X/WATER  
 ALS Vial : 12 Sample Multiplier: 1

Instrument :  
 MSVOA\_X  
 ClientSampleId :  
 IBLK

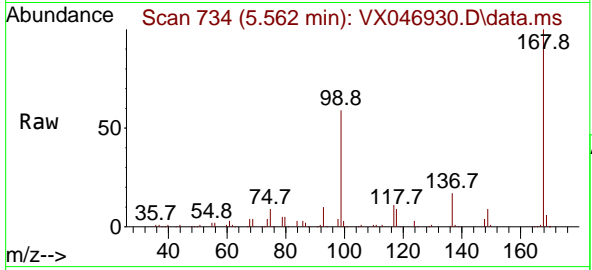
Quant Time: Jul 10 03:14:07 2025  
 Quant Method : Z:\voasrv\HPCHEM1\MSVOA\_X\Method\82X070225W.M  
 Quant Title : SW846 8260  
 QLast Update : Thu Jul 10 02:52:52 2025  
 Response via : Initial Calibration



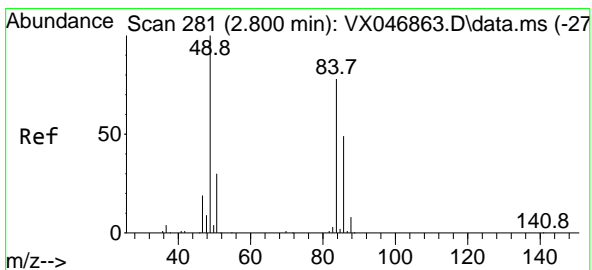
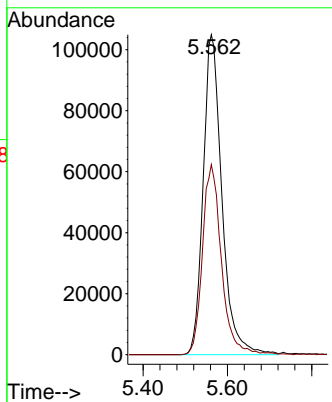
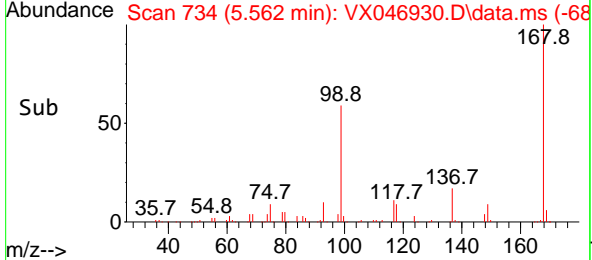


#1  
 Pentafluorobenzene  
 Concen: 50.000 ug/l  
 RT: 5.562 min Scan# 734  
 Delta R.T. -0.000 min  
 Lab File: VX046930.D  
 Acq: 09 Jul 2025 14:27

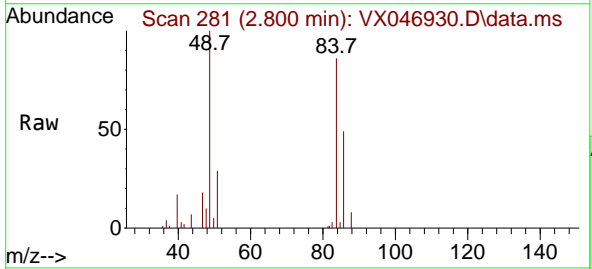
Instrument :  
 MSVOA\_X  
 ClientSampleId :  
 IBLK



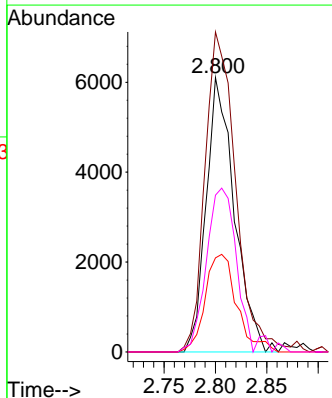
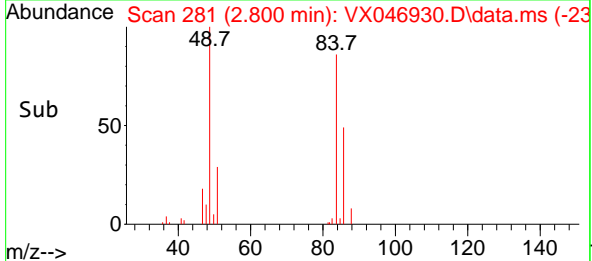
Tgt Ion:168 Resp: 324866  
 Ion Ratio Lower Upper  
 168 100  
 99 59.4 48.8 73.2

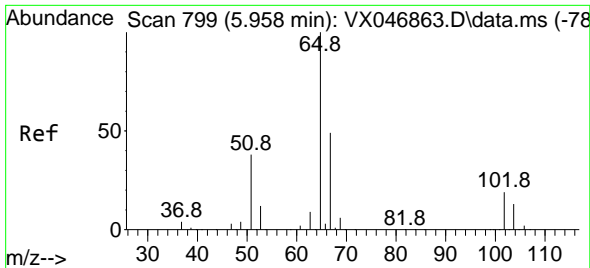


#20  
 Methylene Chloride  
 Concen: 2.962 ug/l  
 RT: 2.800 min Scan# 281  
 Delta R.T. -0.000 min  
 Lab File: VX046930.D  
 Acq: 09 Jul 2025 14:27



Tgt Ion: 84 Resp: 11677  
 Ion Ratio Lower Upper  
 84 100  
 49 116.6 102.8 154.2  
 51 34.3 31.1 46.7  
 86 57.1 50.6 75.8

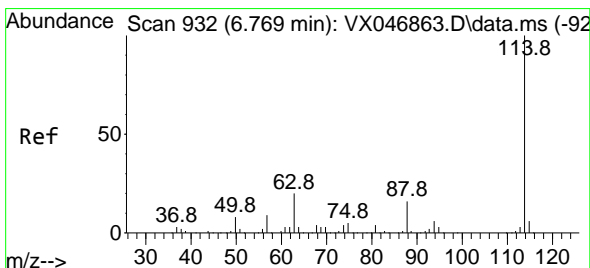
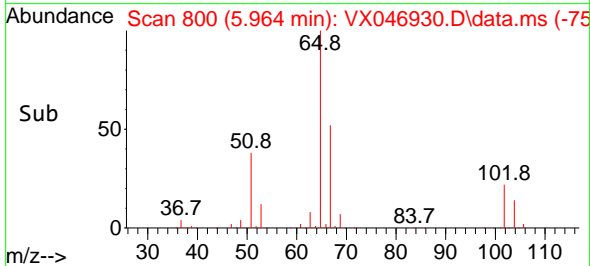
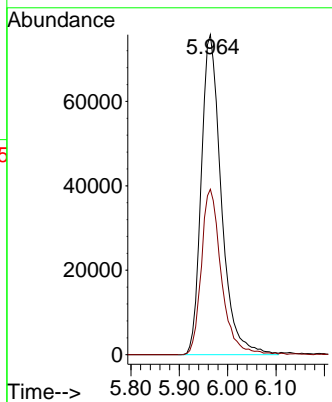
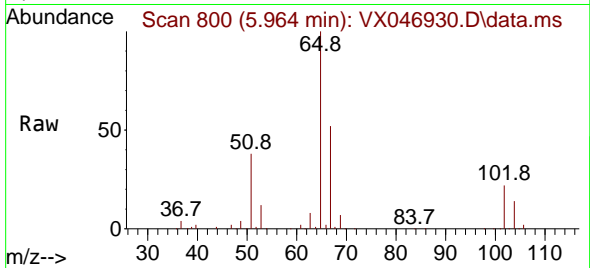




#33  
 1,2-Dichloroethane-d4  
 Concen: 50.809 ug/l  
 RT: 5.964 min Scan# 80  
 Delta R.T. 0.006 min  
 Lab File: VX046930.D  
 Acq: 09 Jul 2025 14:27

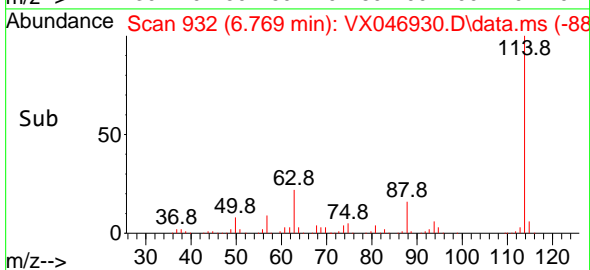
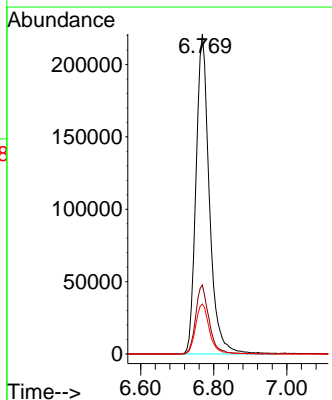
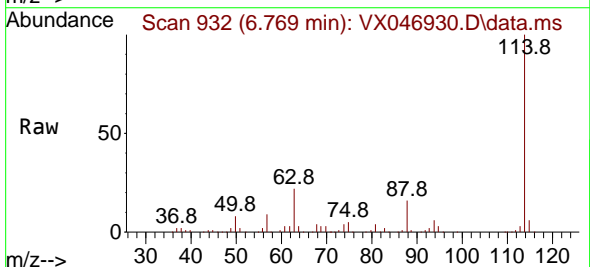
Instrument :  
 MSVOA\_X  
 ClientSampleId :  
 IBLK

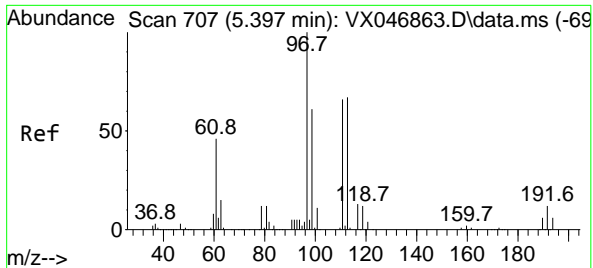
Tgt Ion: 65 Resp: 218062  
 Ion Ratio Lower Upper  
 65 100  
 67 51.8 0.0 105.2



#34  
 1,4-Difluorobenzene  
 Concen: 50.000 ug/l  
 RT: 6.769 min Scan# 932  
 Delta R.T. -0.000 min  
 Lab File: VX046930.D  
 Acq: 09 Jul 2025 14:27

Tgt Ion: 114 Resp: 563541  
 Ion Ratio Lower Upper  
 114 100  
 63 21.5 0.0 40.4  
 88 15.6 0.0 31.0

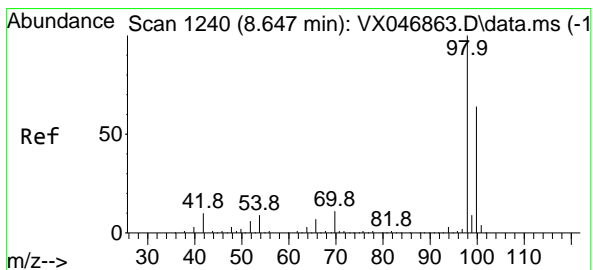
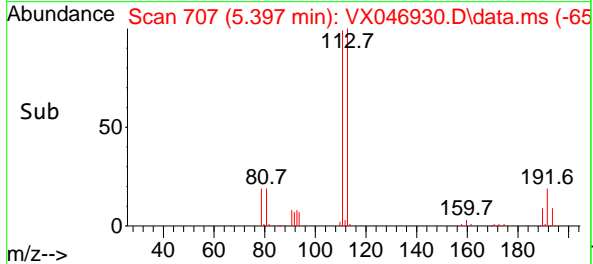
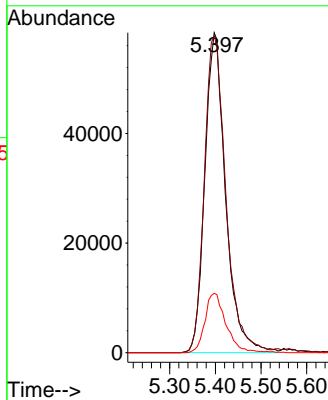
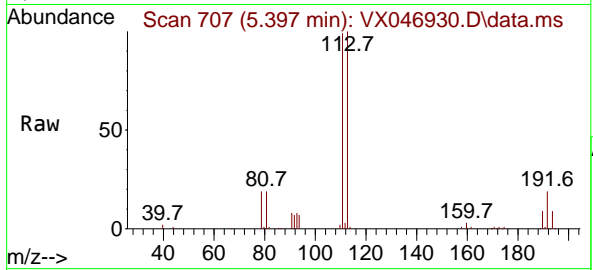




#35  
 Dibromofluoromethane  
 Concen: 48.255 ug/l  
 RT: 5.397 min Scan# 707  
 Delta R.T. -0.000 min  
 Lab File: VX046930.D  
 Acq: 09 Jul 2025 14:27

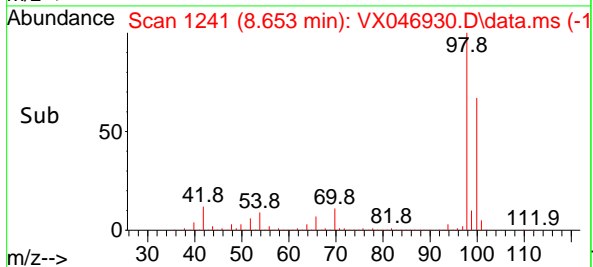
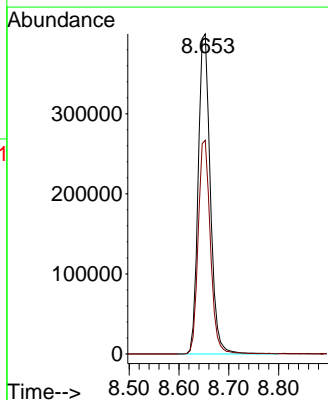
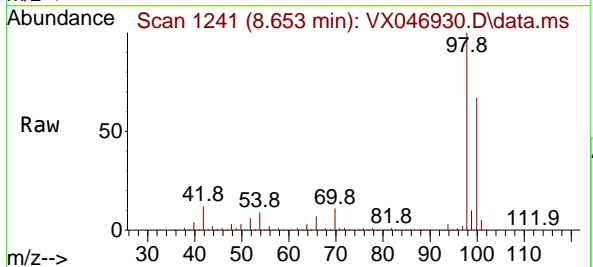
Instrument : MSVOA\_X  
 ClientSampleId : IBLK

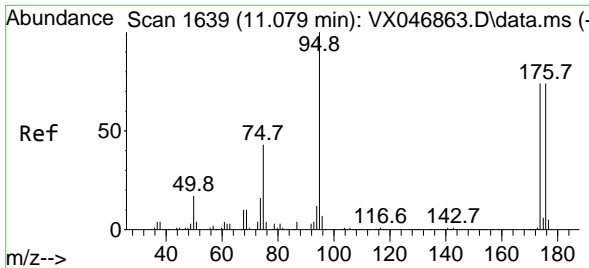
Tgt Ion	Resp	Lower	Upper
113	184593		
113	100		
111	102.3	81.2	121.8
192	18.9	15.3	22.9



#50  
 Toluene-d8  
 Concen: 50.050 ug/l  
 RT: 8.653 min Scan# 1241  
 Delta R.T. 0.006 min  
 Lab File: VX046930.D  
 Acq: 09 Jul 2025 14:27

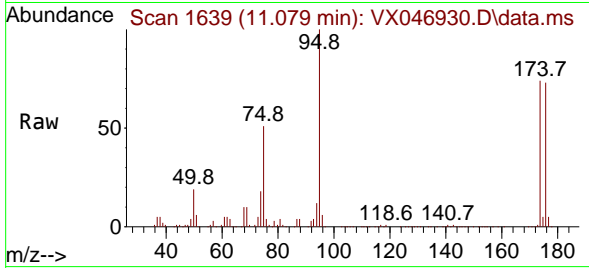
Tgt Ion	Resp	Lower	Upper
98	675509		
98	100		
100	67.0	53.0	79.6



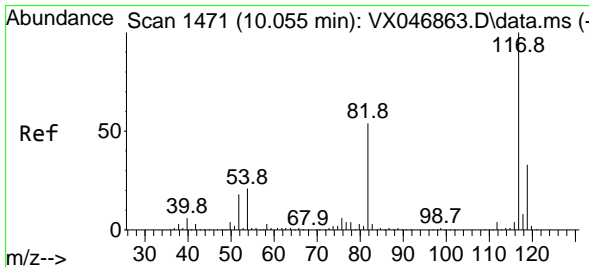
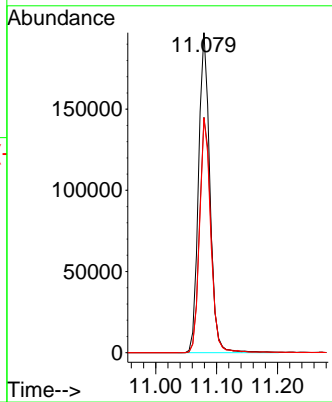
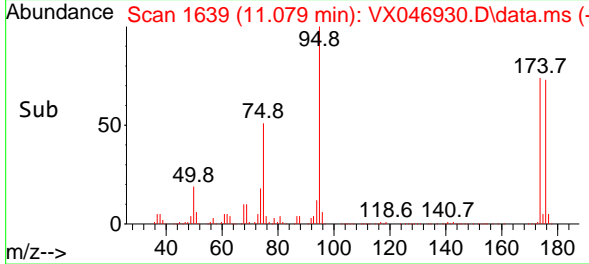


#62  
 4-Bromofluorobenzene  
 Concen: 49.483 ug/l  
 RT: 11.079 min Scan# 1639  
 Delta R.T. -0.000 min  
 Lab File: VX046930.D  
 Acq: 09 Jul 2025 14:27

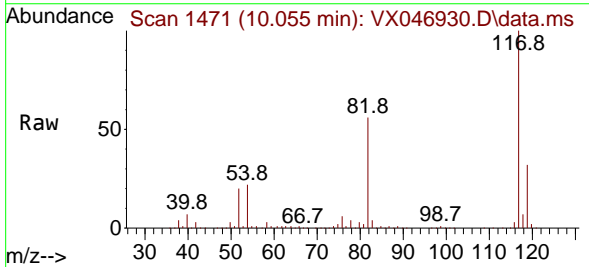
Instrument : MSVOA\_X  
 ClientSampleId : IBLK



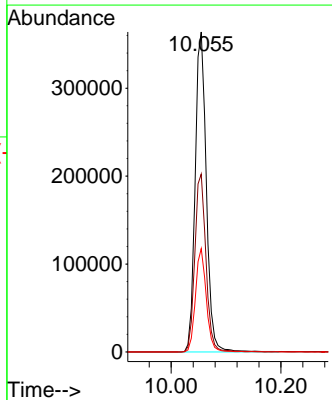
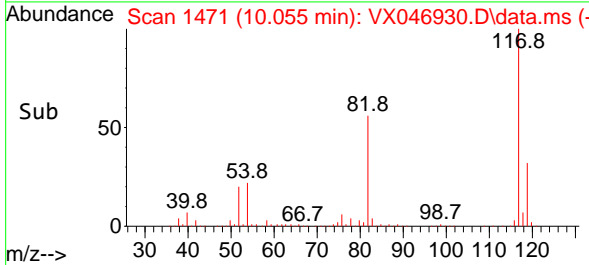
Tgt Ion: 95 Resp: 253820  
 Ion Ratio Lower Upper  
 95 100  
 174 74.3 0.0 152.0  
 176 71.6 0.0 145.2

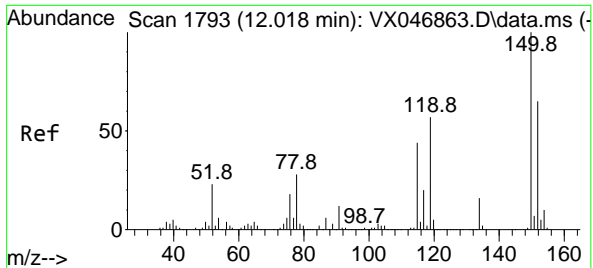


#63  
 Chlorobenzene-d5  
 Concen: 50.000 ug/l  
 RT: 10.055 min Scan# 1471  
 Delta R.T. -0.000 min  
 Lab File: VX046930.D  
 Acq: 09 Jul 2025 14:27



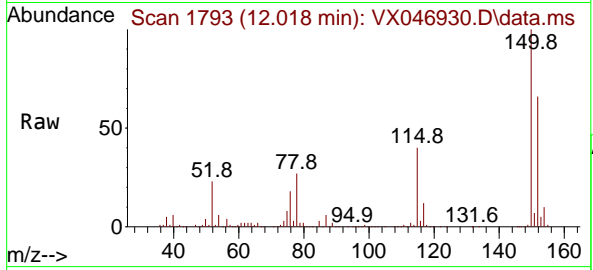
Tgt Ion: 117 Resp: 517518  
 Ion Ratio Lower Upper  
 117 100  
 82 55.6 43.3 64.9  
 119 32.3 26.4 39.6





#72  
 1,4-Dichlorobenzene-d4  
 Concen: 50.000 ug/l  
 RT: 12.018 min Scan# 1  
 Delta R.T. -0.000 min  
 Lab File: VX046930.D  
 Acq: 09 Jul 2025 14:27

Instrument : MSVOA\_X  
 ClientSampleId : IBLK



Tgt Ion:152 Resp: 255473

Ion	Ratio	Lower	Upper
152	100		
115	60.4	42.4	127.1
150	155.5	0.0	349.2

