

Data Path : Z:\voasrv\HPCHEM1\MSVOA_X\Data\VX070925\
 Data File : VX046925.D
 Acq On : 09 Jul 2025 11:49
 Operator : JC/MD
 Sample : IBLK
 Misc : 5.0mL/MSVOA_X/WATER
 ALS Vial : 7 Sample Multiplier: 1

Instrument :
 MSVOA_X
 ClientSampleId :
 IBLK

Integration Parameters: RTEINT.P

Integrator: RTE
 Smoothing : ON Filtering: 5
 Sampling : 1 Min Area: 3 % of largest Peak
 Start Thrs: 0.2 Max Peaks: 100
 Stop Thrs : 0 Peak Location: TOP

If leading or trailing edge < 100 prefer < Baseline drop else tangent >
 Peak separation: 5

Method : Z:\voasrv\HPCHEM1\MSVOA_X\Method\82X070225W.M
 Title : SW846 8260

Signal : TIC: VX046925.D\data.ms

peak #	R.T. min	first scan	max scan	last scan	PK TY	peak height	corr. area	corr. % max.	% of total
1	5.397	695	707	724	rBV2	214068	679025	33.14%	6.213%
2	5.562	724	734	755	rVB2	347195	1075236	52.48%	9.839%
3	5.964	789	800	828	rBV2	235773	681462	33.26%	6.235%
4	6.769	922	932	957	rBV	575895	1497086	73.08%	13.698%
5	8.647	1234	1240	1259	rBV	1228431	2048667	100.00%	18.745%
6	10.055	1465	1471	1484	rBV	1249873	1796493	87.69%	16.438%
7	11.079	1634	1639	1654	rBV	1087660	1368501	66.80%	12.522%
8	12.018	1788	1793	1806	rBV	1396333	1759369	85.88%	16.098%
9	13.719	2068	2072	2078	rBV3	18358	23021	1.12%	0.211%

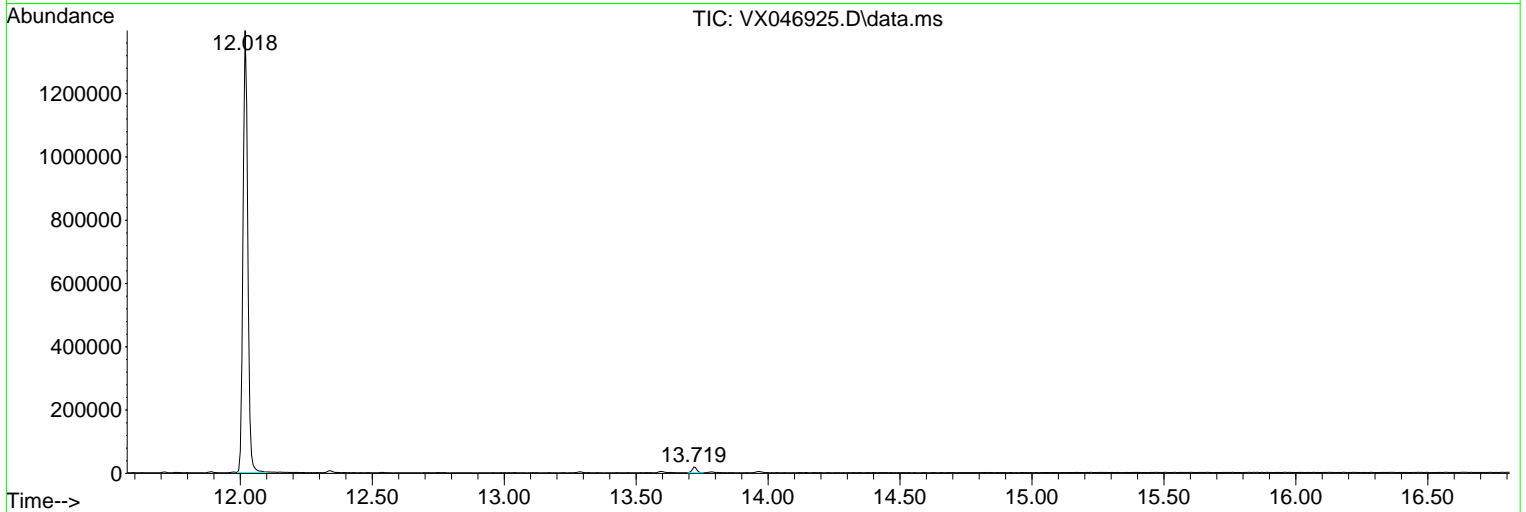
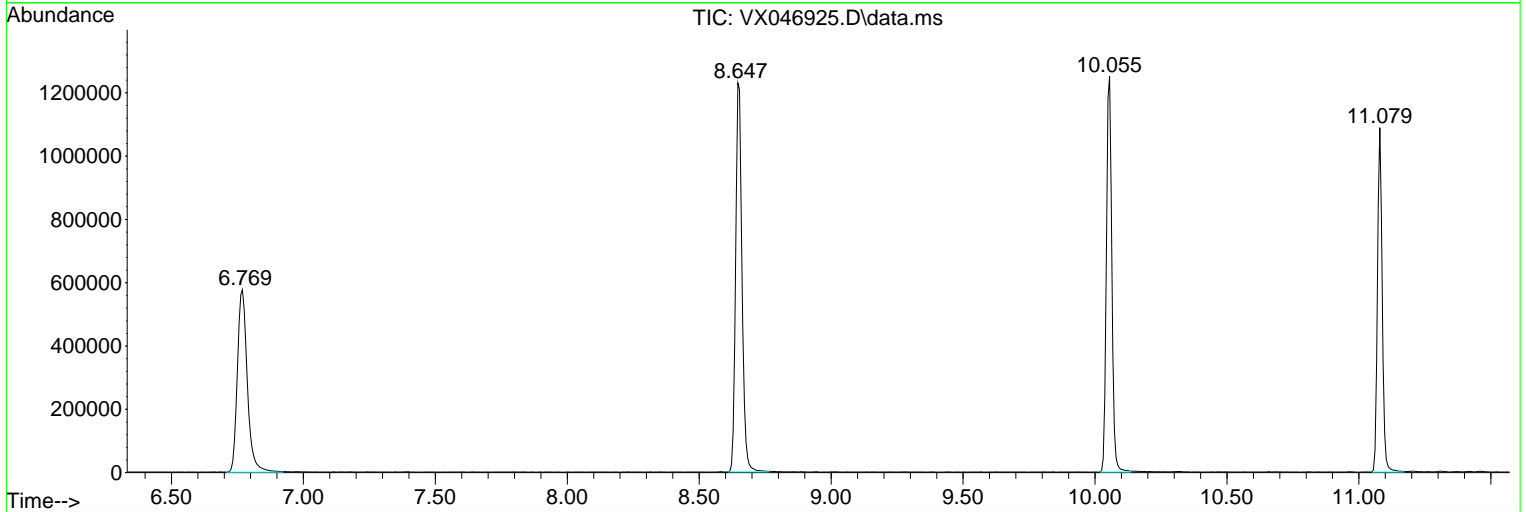
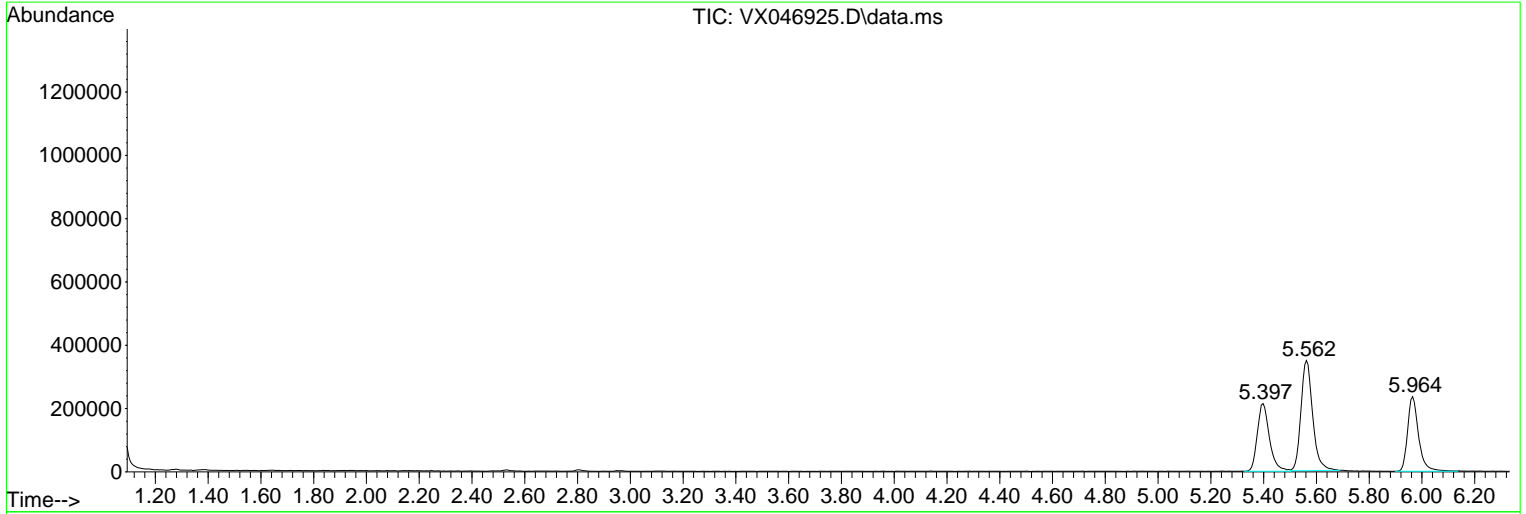
Sum of corrected areas: 10928860

Data Path : Z:\voasrv\HPCHEM1\MSVOA_X\Data\VX070925\
 Data File : VX046925.D
 Acq On : 09 Jul 2025 11:49
 Operator : JC/MD
 Sample : IBLK
 Misc : 5.0mL/MSVOA_X/WATER
 ALS Vial : 7 Sample Multiplier: 1

Instrument :
 MSVOA_X
 ClientSampleId :
 IBLK

Quant Method : Z:\voasrv\HPCHEM1\MSVOA_X\Method\82X070225W.M
 Quant Title : SW846 8260

TIC Library : C:\Database\NIST20.L
 TIC Integration Parameters: LSCINT.P



Library Search Compound Report

Data Path : Z:\voasrv\HPCHEM1\MSVOA_X\Data\VX070925\
Data File : VX046925.D
Acq On : 09 Jul 2025 11:49
Operator : JC/MD
Sample : IBLK
Misc : 5.0mL/MSVOA_X/WATER
ALS Vial : 7 Sample Multiplier: 1

Instrument :
MSVOA_X
ClientSampleId :
IBLK

Quant Method : Z:\voasrv\HPCHEM1\MSVOA_X\Method\82X070225W.M
Quant Title : SW846 8260

TIC Library : C:\Database\NIST20.L
TIC Integration Parameters: LSCINT.P

No Library Search Compounds Detected

Data Path : Z:\voasrv\HPCHEM1\MSVOA_X\Data\VX070925\
Data File : VX046925.D
Acq On : 09 Jul 2025 11:49
Operator : JC/MD
Sample : IBLK
Misc : 5.0mL/MSVOA_X/WATER
ALS Vial : 7 Sample Multiplier: 1

Instrument :
MSVOA_X
ClientSampleId :
IBLK

Quant Method : Z:\voasrv\HPCHEM1\MSVOA_X\Method\82X070225W.M
Quant Title : SW846 8260

TIC Library : C:\Database\NIST20.L
TIC Integration Parameters: LSCINT.P

TIC Top Hit name	RT	EstConc	Units	Response	#	RT	Resp	Conc
------------------	----	---------	-------	----------	---	----	------	------
