

Data Path : Z:\VOASRV\HPCHEM1\MSVOA X\DATA\VX071018\  
 Data File : VX003282.D  
 Acq On : 10 Jul 2018 14:21  
 Operator : JC/MD  
 Sample : J3874-01  
 Misc : 5.0µ/10mL/100uL/5.00mL/MSVOA\_X/MEOH  
 ALS Vial : 5 Sample Multiplier: 1

Instrument :  
 MSVOA\_X  
 ClientSampleId :  
 2018-NYSEG-MCMaster-PH4-5(0-

Integration Parameters: RTEINT.P

Integrator: RTE  
 Smoothing : ON Filtering: 5  
 Sampling : 1 Min Area: 3 % of largest Peak  
 Start Thrs: 0.2 Max Peaks: 100  
 Stop Thrs : 0 Peak Location: TOP

If leading or trailing edge < 100 prefer < Baseline drop else tangent >  
 Peak separation: 5

Method : Z:\VOASRV\HPCHEM1\MSVOA\_X\METHOD\82X070918W.M  
 Title : SW846 8260

Signal : TIC

peak #	R.T. min	first scan	max scan	last scan	PK TY	peak height	corr. area	corr. % max.	% of total
1	1.069	75	79	92	rBV	560200	756657	59.75%	9.741%
2	1.636	155	172	173	rBV7	16870	48568	3.84%	0.625%
3	4.830	684	696	706	rBV	10372	42086	3.32%	0.542%
4	5.513	796	808	822	rBV2	149763	447950	35.37%	5.767%
5	5.659	822	832	847	rVB	236574	669644	52.88%	8.621%
6	6.074	889	900	920	rVB	158554	432137	34.12%	5.563%
7	6.860	1017	1029	1049	rBV	323210	799286	63.11%	10.290%
8	7.458	1119	1127	1134	rVB5	7381	17161	1.36%	0.221%
9	8.720	1327	1334	1343	rBV	790851	1266430	100.00%	16.304%
10	9.336	1430	1435	1440	rBV2	8642	13885	1.10%	0.179%
11	10.116	1557	1563	1574	rBV	687004	981204	77.48%	12.632%
12	11.146	1725	1732	1745	rBV	725090	957755	75.63%	12.330%
13	11.530	1789	1795	1801	rVB5	6679	15925	1.26%	0.205%
14	11.811	1837	1841	1851	rVB	9377	16061	1.27%	0.207%
15	12.085	1880	1886	1894	rBV	943968	1188195	93.82%	15.296%
16	12.390	1930	1936	1941	rVB6	6284	13771	1.09%	0.177%
17	13.841	2168	2174	2181	rVB	22743	34623	2.73%	0.446%
18	14.700	2308	2315	2324	rVB	13873	23685	1.87%	0.305%
19	14.847	2335	2339	2344	rVB	10897	13845	1.09%	0.178%
20	15.554	2450	2455	2461	rBV4	7113	13368	1.06%	0.172%
21	15.956	2515	2521	2527	rVB3	7498	15545	1.23%	0.200%

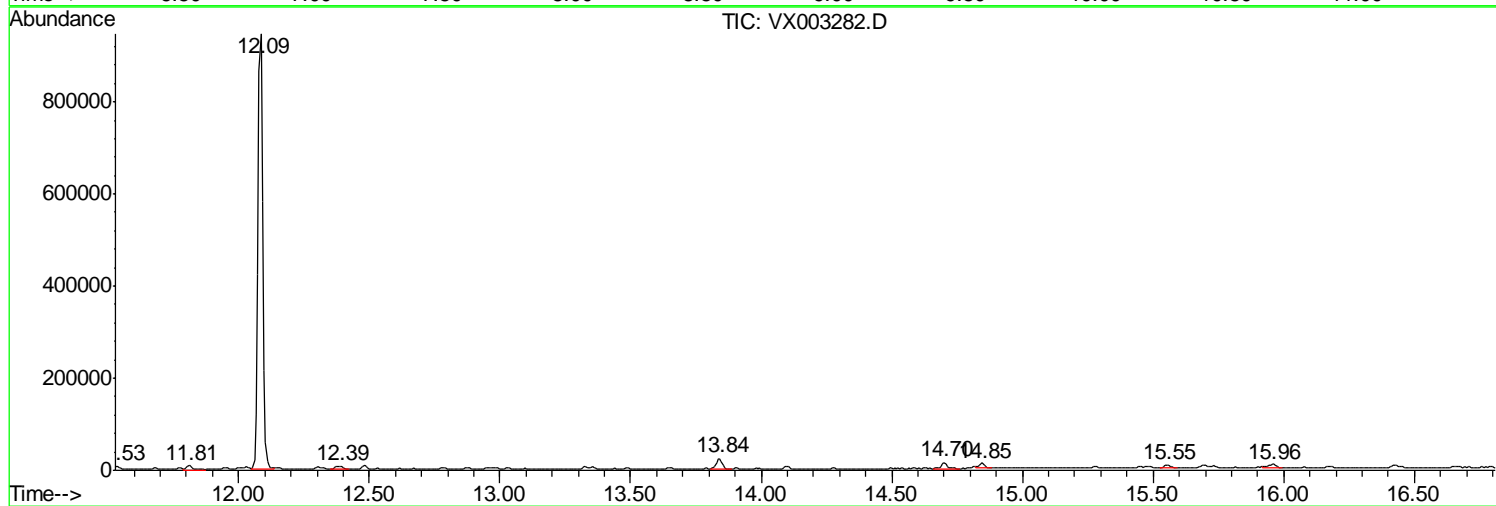
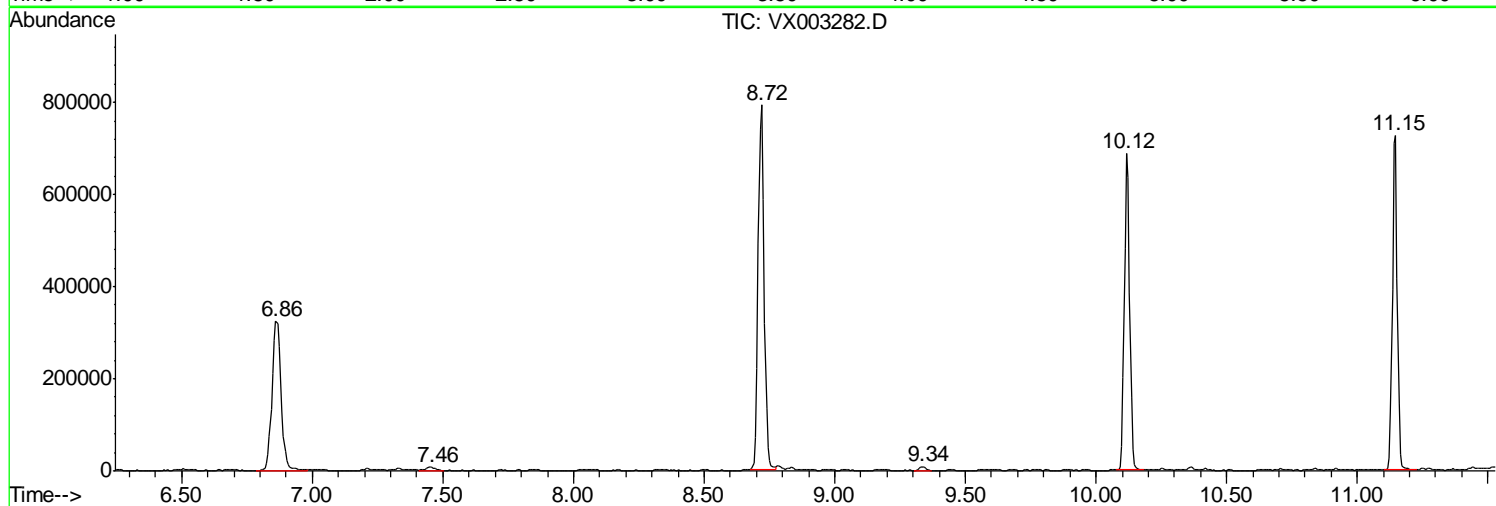
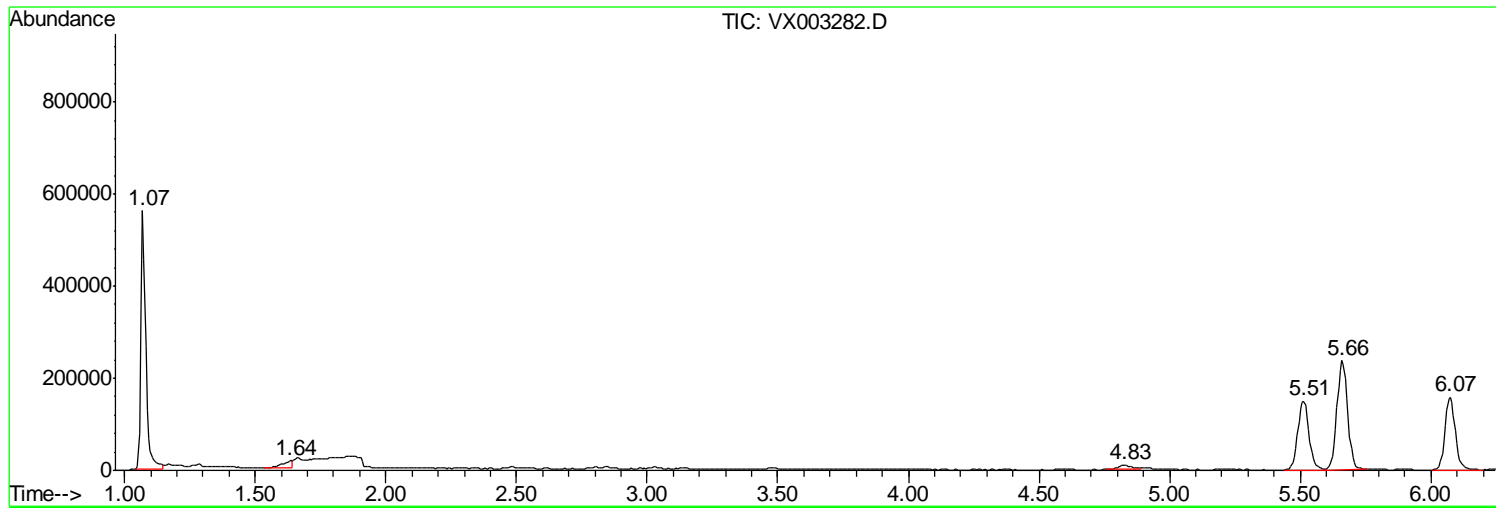
Sum of corrected areas: 7767781

Data Path : Z:\VOASRV\HPCHEM1\MSVOA X\DATA\VX071018\  
Data File : VX003282.D  
Acq On : 10 Jul 2018 14:21  
Operator : JC/MD  
Sample : J3874-01  
Misc : 5.0µ/10mL/100uL/5.00mL/MSVOA\_X/MEOH  
ALS Vial : 5 Sample Multiplier: 1

Instrument :  
MSVOA\_X  
Client Sampled :  
2018-NYSEG-MCMaster-PH4-5(0-

Quant Method : Z:\VOASRV\HPCHEM1\MSVOA\_X\METHOD\82X070918W.M  
Quant Title : SW846 8260

TIC Library : C:\DATABASE\NIST11.L  
TIC Integration Parameters: LSCINT.P



Data Path : Z:\VOASRV\HPCHEM1\MSVOA\_X\DATA\VX071018\  
Data File : VX003282.D  
Acq On : 10 Jul 2018 14:21  
Operator : JC/MD  
Sample : J3874-01  
Misc : 5.0g/10mL/100uL/5.00mL/MSVOA\_X/MEOH  
ALS Vial : 5 Sample Multiplier: 1

Instrument :  
MSVOA\_X  
ClientSampleId :  
2018-NYSEG-MCMaster-PH4-5(0-

Quant Method : Z:\VOASRV\HPCHEM1\MSVOA\_X\METHOD\82X070918W.M  
Quant Title : SW846 8260

TIC Library : C:\DATABASE\NIST11.L  
TIC Integration Parameters: LSCINT.P

No Library Search Compounds Detected

\*\*\*\*\*

Data Path : Z:\VOASRV\HPCHEM1\MSVOA\_X\DATA\VX071018\  
Data File : VX003282.D  
Acq On : 10 Jul 2018 14:21  
Operator : JC/MD  
Sample : J3874-01  
Misc : 5.0g/10mL/100uL/5.00mL/MSVOA\_X/MEOH  
ALS Vial : 5 Sample Multiplier: 1

Instrument :  
MSVOA\_X  
ClientSampleId :  
2018-NYSEG-MCMaster-PH4-5(0-

Quant Method : Z:\VOASRV\HPCHEM1\MSVOA\_X\METHOD\82X070918W.M  
Quant Title : SW846 8260

TIC Library : C:\DATABASE\NIST11.L  
TIC Integration Parameters: LSCINT.P

TIC Top Hit name	RT	EstConc	Units	Response	--Internal Standard--			
					#	RT	Resp	Conc

---