

Data Path : Z:\voasrv\HPCHEM1\MSVOA_X\Data\VX071221\
 Data File : VX023250.D
 Acq On : 12 Jul 2021 18:32
 Operator : JC/MD
 Sample : IBLK
 Misc : 5.0mL/MSVOA_X/WATER
 ALS Vial : 20 Sample Multiplier: 1

Instrument :
 MSVOA_X
 ClientSampled :
 IBLK

Integration Parameters: RTEINT.P
 Integrator: RTE
 Smoothing : ON Filtering: 5
 Sampling : 1 Min Area: 3 % of largest Peak
 Start Thrs: 0.2 Max Peaks: 100
 Stop Thrs : 0 Peak Location: TOP

If leading or trailing edge < 100 prefer < Baseline drop else tangent >
 Peak separation: 5

Method : Z:\voasrv\HPCHEM1\MSVOA_X\Method\82X070221W.M
 Title : SW846 8260

Signal : TIC: VX023250.D\data.ms

peak #	R.T. min	first scan	max scan	last scan	PK TY	peak height	corr. area	corr. % max.	% of total
1	5.397	695	707	722	rBV	130499	378195	33.58%	6.520%
2	5.562	722	734	747	rVB	234187	661396	58.72%	11.402%
3	5.964	789	800	814	rBV	144506	383944	34.09%	6.619%
4	6.769	922	932	948	rBV	351559	836436	74.27%	14.419%
5	8.653	1234	1241	1250	rBV	730084	1126273	100.00%	19.416%
6	10.055	1465	1471	1486	rBV	673975	952996	84.62%	16.429%
7	11.085	1634	1640	1649	rBV	556397	701111	62.25%	12.087%
8	12.024	1789	1794	1807	rVB	627368	760387	67.51%	13.108%

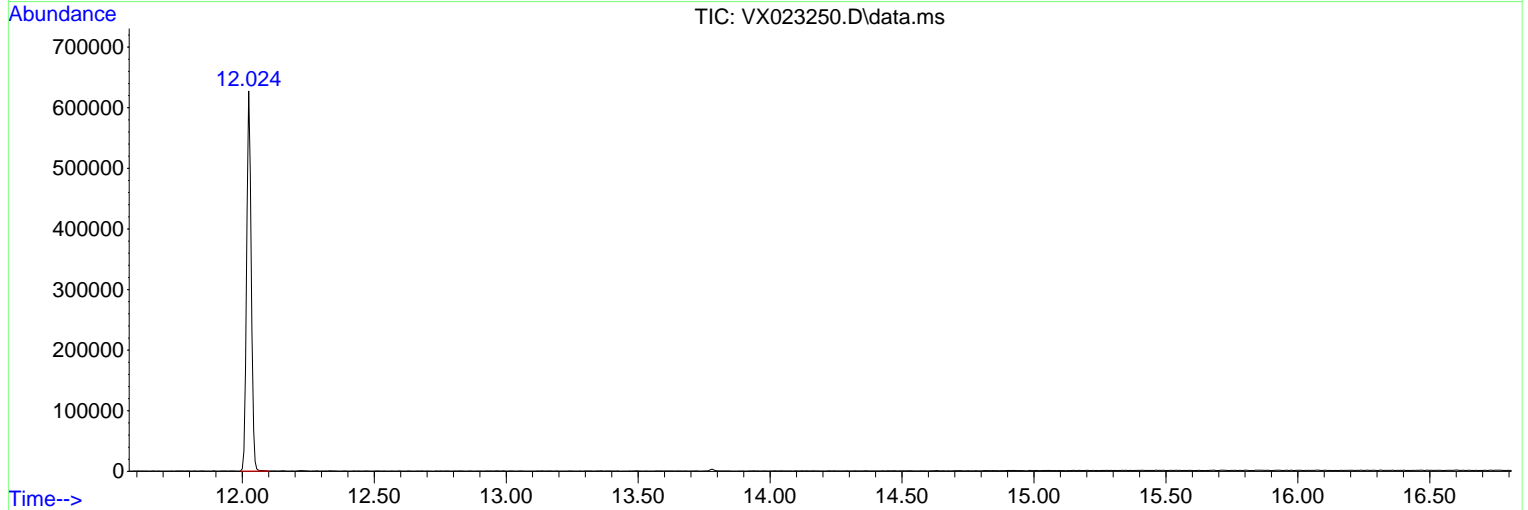
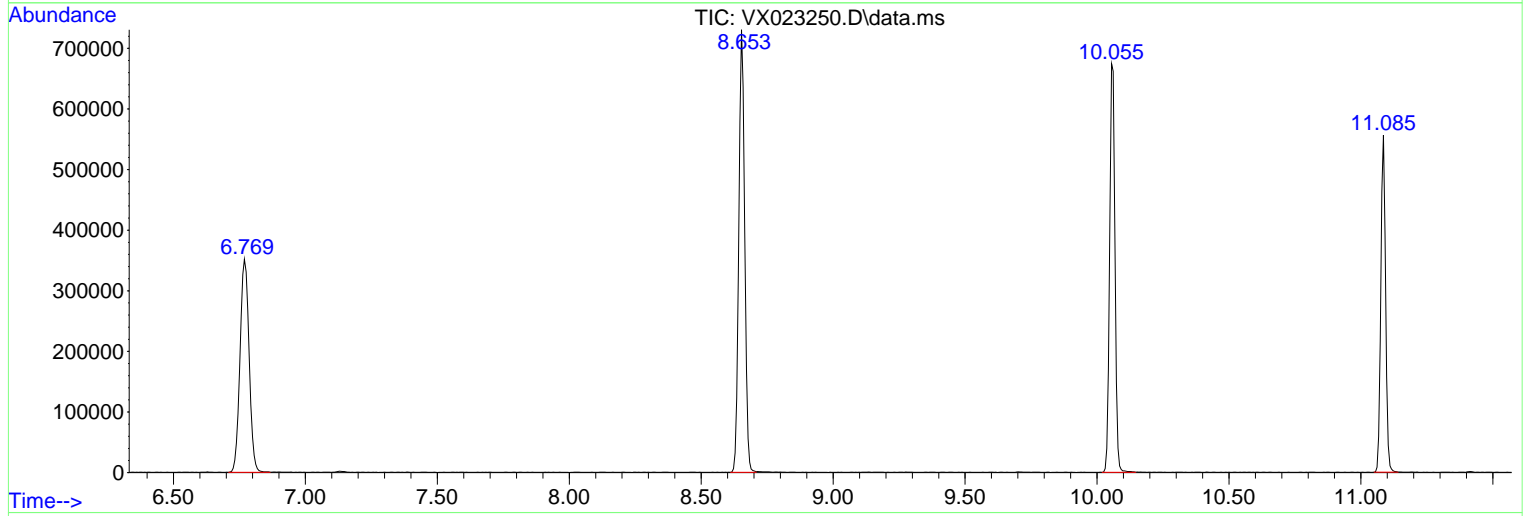
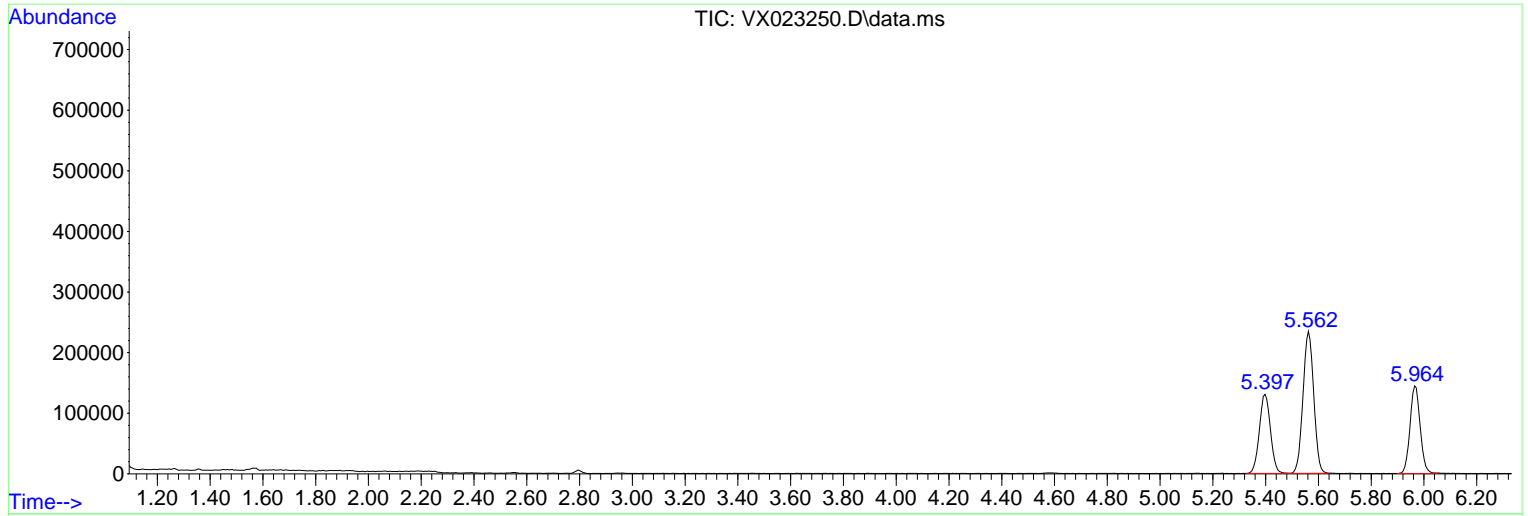
Sum of corrected areas: 5800738

Data Path : Z:\voasrv\HPCHEM1\MSVOA_X\Data\VX071221\
 Data File : VX023250.D
 Acq On : 12 Jul 2021 18:32
 Operator : JC/MD
 Sample : IBLK
 Misc : 5.0mL/MSVOA_X/WATER
 ALS Vial : 20 Sample Multiplier: 1

Instrument :
 MSVOA_X
ClientSampled :
 IBLK

Quant Method : Z:\voasrv\HPCHEM1\MSVOA_X\Method\82X070221W.M
 Quant Title : SW846 8260

TIC Library : C:\DATABASE\NIST11.L
 TIC Integration Parameters: LSCINT.P



Library Search Compound Report

Data Path : Z:\voasrv\HPCHEM1\MSVOA_X\Data\VX071221\
Data File : VX023250.D
Acq On : 12 Jul 2021 18:32
Operator : JC/MD
Sample : IBLK
Misc : 5.0mL/MSVOA_X/WATER
ALS Vial : 20 Sample Multiplier: 1

Instrument :
MSVOA_X
ClientSampleId :
IBLK

Quant Method : Z:\voasrv\HPCHEM1\MSVOA_X\Method\82X070221W.M
Quant Title : SW846 8260

TIC Library : C:\DATABASE\NIST11.L
TIC Integration Parameters: LSCINT.P

No Library Search Compounds Detected

Data Path : Z:\voasrv\HPCHEM1\MSVOA_X\Data\VX071221\
Data File : VX023250.D
Acq On : 12 Jul 2021 18:32
Operator : JC/MD
Sample : IBLK
Misc : 5.0mL/MSVOA_X/WATER
ALS Vial : 20 Sample Multiplier: 1

Instrument :
MSVOA_X
ClientSampled :
IBLK

Quant Method : Z:\voasrv\HPCHEM1\MSVOA_X\Method\82X070221W.M
Quant Title : SW846 8260

TIC Library : C:\DATABASE\NIST11.L
TIC Integration Parameters: LSCINT.P

TIC Top Hit name	RT	EstConc	Units	Response	--Internal Standard--		
					#	RT	Resp Conc
