

Data Path : Z:\voasrv\HPCHEM1\MSVOA_X\Data\VX071223\
 Data File : VX036507.D
 Acq On : 12 Jul 2023 13:29
 Operator : JC/MD
 Sample : 03573-01 2.5PPB
 Misc : 5.0mL/MSVOA_X/WATER
 ALS Vial : 11 Sample Multiplier: 1

Instrument :
 MSVOA_X
 ClientSampleId :
 VSTD100647

Quant Time: Jul 13 01:29:18 2023
 Quant Method : Z:\voasrv\HPCHEM1\MSVOA_X\Method\SFAMXML071223WMA.M
 Quant Title : VOC Analysis
 QLast Update : Thu Jul 13 01:12:57 2023
 Response via : Initial Calibration

Compound	R.T.	QIon	Response	Conc	Units	Dev(Min)
Internal Standards						
1) 1,4-Difluorobenzene	6.763	114	298715	50.000	ug/L	0.00
28) Chlorobenzene-d5	10.055	117	271866	50.000	ug/L	0.00
58) 1,4-Dichlorobenzene-d4	12.024	152	132871	50.000	ug/L	0.00
System Monitoring Compounds						
4) Vinyl Chloride-d3	1.368	65	115408	54.163	ug/L	0.00
Spiked Amount	50.000	Range 60 - 135	Recovery =	108.320%		
7) Chloroethane-d5	1.666	69	100784	43.051	ug/L	0.00
Spiked Amount	50.000	Range 70 - 130	Recovery =	86.100%		
11) 1,1-Dichloroethene-d2	2.307	65	47648	52.409	ug/L	0.00
Spiked Amount	50.000	Range 60 - 125	Recovery =	104.820%		
21) 2-Butanone-d5	4.453	46	151358	101.712	ug/L	0.00
Spiked Amount	100.000	Range 40 - 130	Recovery =	101.710%		
24) Chloroform-d	5.056	84	185053	47.825	ug/L	0.00
Spiked Amount	50.000	Range 70 - 125	Recovery =	95.640%		
26) 1,2-Dichloroethane-d4	5.952	65	130472	49.369	ug/L	0.00
Spiked Amount	50.000	Range 70 - 125	Recovery =	98.740%		
32) Benzene-d6	5.971	84	395977	51.447	ug/L	0.00
Spiked Amount	50.000	Range 70 - 125	Recovery =	102.900%		
36) 1,2-Dichloropropane-d6	7.306	67	124305	50.949	ug/L	0.00
Spiked Amount	50.000	Range 70 - 120	Recovery =	101.900%		
41) Toluene-d8	8.647	98	375652	51.126	ug/L	0.00
Spiked Amount	50.000	Range 80 - 120	Recovery =	102.260%		
43) trans-1,3-Dichloroprop...	8.952	79	55862	48.091	ug/L	0.00
Spiked Amount	50.000	Range 60 - 125	Recovery =	96.180%		
47) 2-Hexanone-d5	9.385	63	114582	106.778	ug/L	0.00
Spiked Amount	100.000	Range 45 - 130	Recovery =	106.780%		
56) 1,1,2,2-Tetrachloroeth...	11.189	84	166383	51.835	ug/L	0.00
Spiked Amount	50.000	Range 65 - 120	Recovery =	103.680%		
66) 1,2-Dichlorobenzene-d4	12.323	152	133093	52.729	ug/L	0.00
Spiked Amount	50.000	Range 80 - 120	Recovery =	105.460%		
Target Compounds						
2) Dichlorodifluoromethane	1.167	85	5355	2.570	ug/L	92
3) Chloromethane	1.295	50	6773	2.750	ug/L	85
5) Vinyl chloride	1.374	62	7638	2.989	ug/L #	81
6) Bromomethane	1.612	94	6050	2.506	ug/L	94
8) Chloroethane	1.691	64	4289	2.293	ug/L	99
9) Trichlorofluoromethane	1.886	101	11473	2.838	ug/L	100
10) 1,1,2-Trichloro-1,2,-...	2.325	101	6808	3.555	ug/L #	85
12) 1,1-Dichloroethene	2.319	96	5851	3.125	ug/L #	1
13) Acetone	2.386	43	5640	4.998	ug/L	97
14) Carbon disulfide	2.508	76	13471	2.682	ug/L #	94
15) Methyl Acetate	2.703	43	5777	2.575	ug/L	93
16) Methylene chloride	2.788	84	5884	2.848	ug/L	99
17) trans-1,2-Dichloroethene	3.093	96	5175	2.744	ug/L	99
18) Methyl tert-butyl Ether	3.117	73	15662	2.388	ug/L	98
19) 1,1-Dichloroethane	3.605	63	9629	2.609	ug/L	93
20) cis-1,2-Dichloroethene	4.489	96	5693	2.583	ug/L	90
22) 2-Butanone	4.568	43	7948	4.843	ug/L	77
23) Bromochloromethane	4.898	128	1618	1.468	ug/L	91
25) Chloroform	5.093	83	18378	4.742	ug/L	99

Data Path : Z:\voasrv\HPCHEM1\MSVOA_X\Data\VX071223\
 Data File : VX036507.D
 Acq On : 12 Jul 2023 13:29
 Operator : JC/MD
 Sample : 03573-01 2.5PPB
 Misc : 5.0mL/MSVOA_X/WATER
 ALS Vial : 11 Sample Multiplier: 1

Instrument :
 MSVOA_X
 ClientSampleId :
 VSTD100647

Quant Time: Jul 13 01:29:18 2023
 Quant Method : Z:\voasrv\HPCHEM1\MSVOA_X\Method\SFAMXML071223WMA.M
 Quant Title : VOC Analysis
 QLast Update : Thu Jul 13 01:12:57 2023
 Response via : Initial Calibration

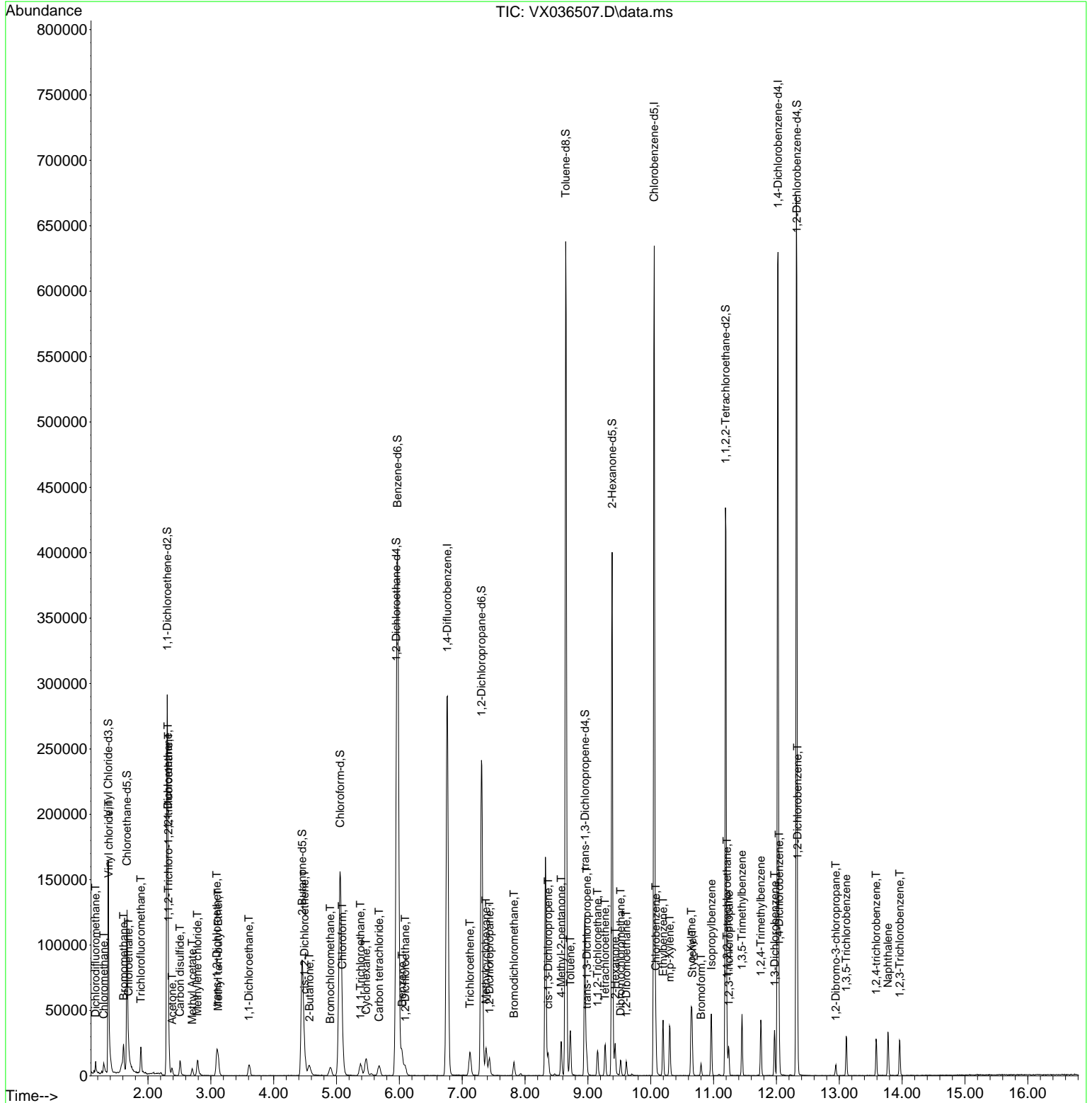
Compound	R.T.	QIon	Response	Conc	Units	Dev(Min)
27) 1,2-Dichloroethane	6.093	62	8007	2.612	ug/L #	93
29) Cyclohexane	5.471	56	5934	1.974	ug/L #	63
30) 1,1,1-Trichloroethane	5.379	97	7796	2.467	ug/L	96
31) Carbon tetrachloride	5.678	117	6504	2.456	ug/L	97
33) Benzene	6.044	78	20333	2.561	ug/L	100
34) Trichloroethene	7.123	95	5801	2.679	ug/L	87
35) Methylcyclohexane	7.379	83	8778	2.784	ug/L	96
37) 1,2-Dichloropropane	7.434	63	5605	2.568	ug/L #	91
38) Bromodichloromethane	7.824	83	6634	2.438	ug/L	89
39) cis-1,3-Dichloropropene	8.366	75	8344	2.426	ug/L	98
40) 4-Methyl-2-pentanone	8.574	43	14779	4.858	ug/L	98
42) Toluene	8.720	91	22079	2.614	ug/L	96
44) trans-1,3-Dichloropropene	8.982	75	7527	2.377	ug/L	92
45) 1,1,2-Trichloroethane	9.153	97	5110	2.463	ug/L	94
46) Tetrachloroethene	9.275	164	4600	2.990	ug/L	87
48) 2-Hexanone	9.433	43	12276	5.164	ug/L	98
49) Dibromochloromethane	9.519	129	5135	2.466	ug/L	95
50) 1,2-Dibromoethane	9.610	107	5408	2.432	ug/L #	95
51) Chlorobenzene	10.080	112	14477	2.636	ug/L	97
52) Ethylbenzene	10.195	91	24927	2.682	ug/L	93
53) m,p-Xylene	10.299	106	9072	2.558	ug/L	89
54) o-Xylene	10.647	106	8560	2.434	ug/L	98
55) Styrene	10.659	104	14545	2.481	ug/L	98
57) 1,1,2,2-Tetrachloroethane	11.214	83	9014	2.797	ug/L #	92
59) Bromoform	10.799	173	3159	2.175	ug/L	93
60) Isopropylbenzene	10.964	105	24062	2.694	ug/L	98
61) 1,2,3-Trichloropropane	11.244	75	6655	2.653	ug/L	95
62) 1,3,5-Trimethylbenzene	11.451	105	19231	2.576	ug/L	98
63) 1,2,4-Trimethylbenzene	11.750	105	18284	2.442	ug/L	98
64) 1,3-Dichlorobenzene	11.969	146	10582	2.648	ug/L	99
65) 1,4-Dichlorobenzene	12.043	146	11379	2.820	ug/L	93
67) 1,2-Dichlorobenzene	12.335	146	10769	2.716	ug/L	98
68) 1,2-Dibromo-3-chloropr...	12.945	75	1504	2.250	ug/L	95
69) 1,3,5-Trichlorobenzene	13.110	180	7156	2.699	ug/L	98
70) 1,2,4-trichlorobenzene	13.585	180	6490	2.595	ug/L	94
71) Naphthalene	13.774	128	20524	2.405	ug/L	99
72) 1,2,3-Trichlorobenzene	13.963	180	6702	2.750	ug/L	93

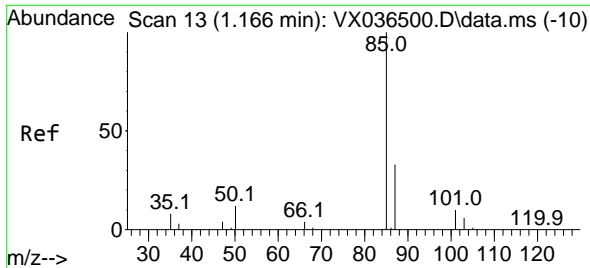
(#) = qualifier out of range (m) = manual integration (+) = signals summed

Data Path : Z:\voasrv\HPCHEM1\MSVOA_X\Data\VX071223\
 Data File : VX036507.D
 Acq On : 12 Jul 2023 13:29
 Operator : JC/MD
 Sample : 03573-01 2.5PPB
 Misc : 5.0mL/MSVOA_X/WATER
 ALS Vial : 11 Sample Multiplier: 1

Instrument :
 MSVOA_X
 ClientSampleId :
 VSTD100647

Quant Time: Jul 13 01:29:18 2023
 Quant Method : Z:\voasrv\HPCHEM1\MSVOA_X\Method\SFAMXLM071223WMA.M
 Quant Title : VOC Analysis
 QLast Update : Thu Jul 13 01:12:57 2023
 Response via : Initial Calibration

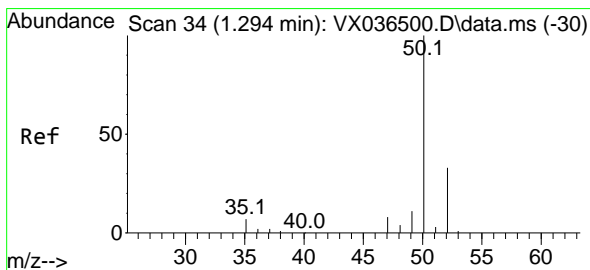
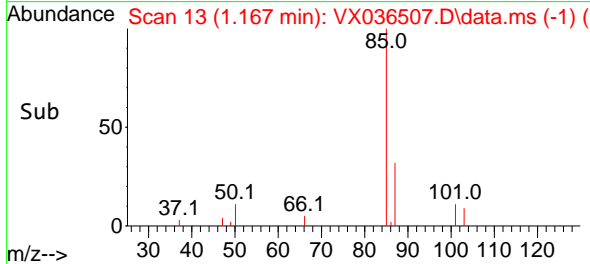
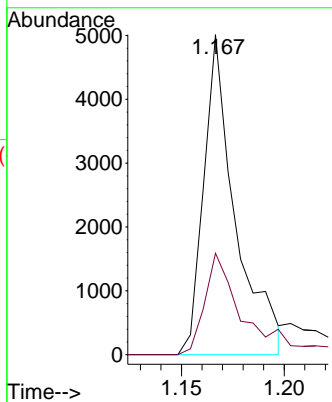
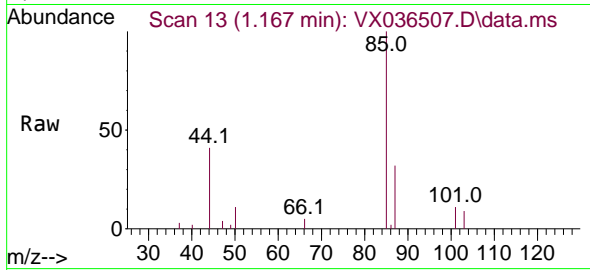




#2
 Dichlorodifluoromethane
 Concen: 2.570 ug/L
 RT: 1.167 min Scan# 11
 Delta R.T. 0.000 min
 Lab File: VX036507.D
 Acq: 12 Jul 2023 13:29

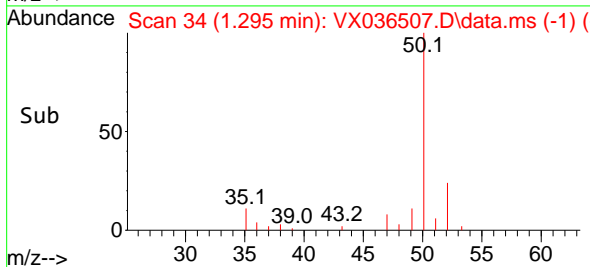
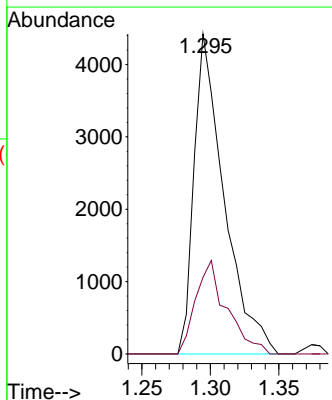
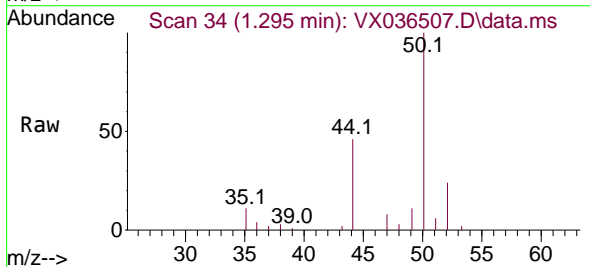
Instrument : MSVOA_X
 ClientSampleId : VSTD100647

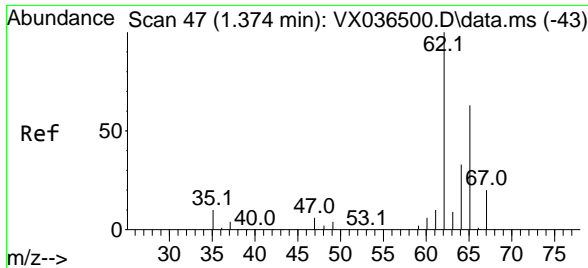
Tgt Ion: 85 Resp: 5355
 Ion Ratio Lower Upper
 85 100
 87 37.5 26.3 39.5



#3
 Chloromethane
 Concen: 2.750 ug/L
 RT: 1.295 min Scan# 34
 Delta R.T. 0.000 min
 Lab File: VX036507.D
 Acq: 12 Jul 2023 13:29

Tgt Ion: 50 Resp: 6773
 Ion Ratio Lower Upper
 50 100
 52 24.0 22.8 42.4

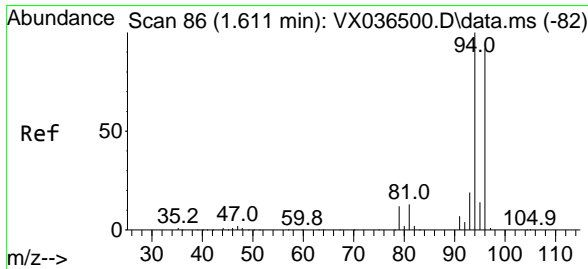
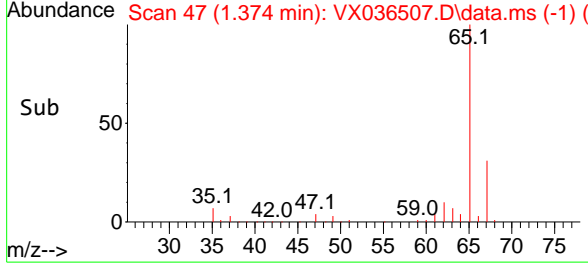
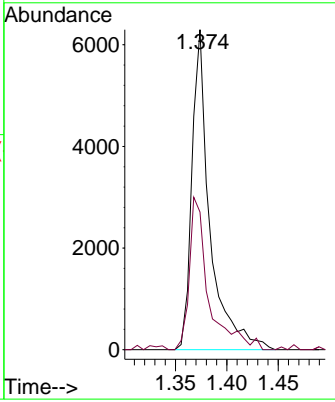
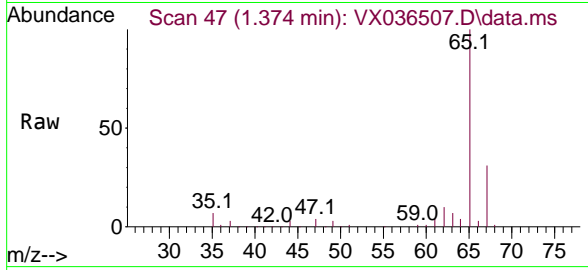




#5
 Vinyl chloride
 Concen: 2.989 ug/L
 RT: 1.374 min Scan# 41
 Delta R.T. 0.000 min
 Lab File: VX036507.D
 Acq: 12 Jul 2023 13:29

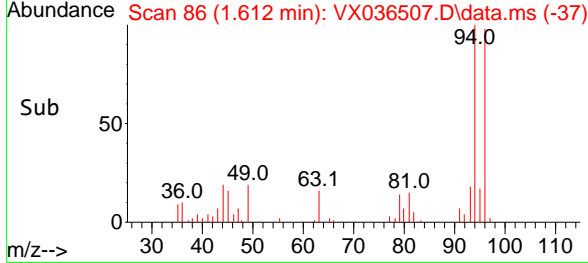
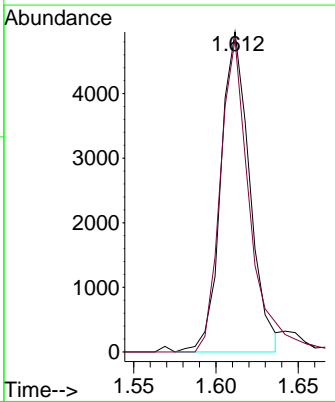
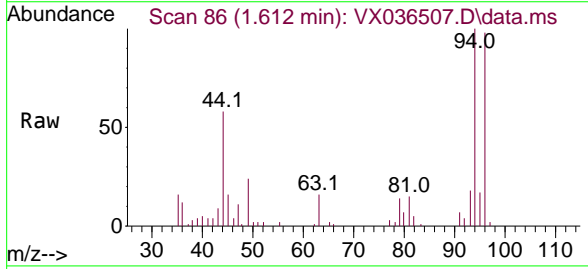
Instrument : MSVOA_X
 ClientSampleId : VSTD100647

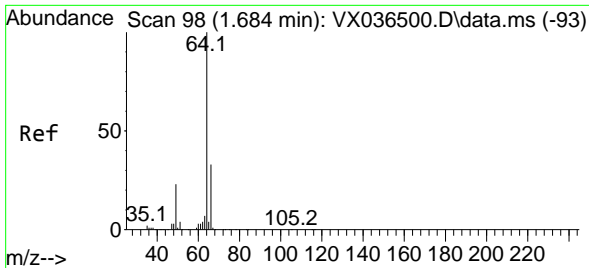
Tgt Ion: 62 Resp: 7638
 Ion Ratio Lower Upper
 62 100
 64 43.0 22.8 42.4#



#6
 Bromomethane
 Concen: 2.506 ug/L
 RT: 1.612 min Scan# 86
 Delta R.T. 0.000 min
 Lab File: VX036507.D
 Acq: 12 Jul 2023 13:29

Tgt Ion: 94 Resp: 6050
 Ion Ratio Lower Upper
 94 100
 96 97.7 64.5 119.7

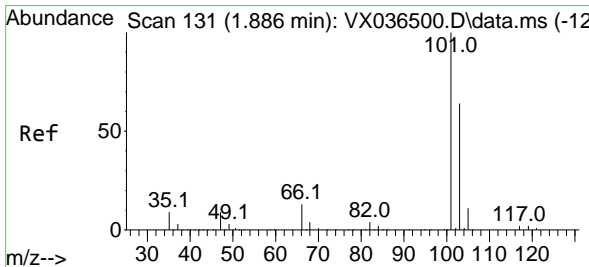
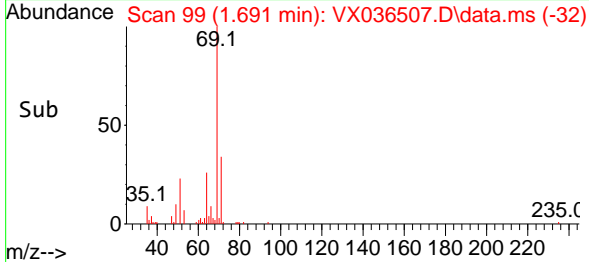
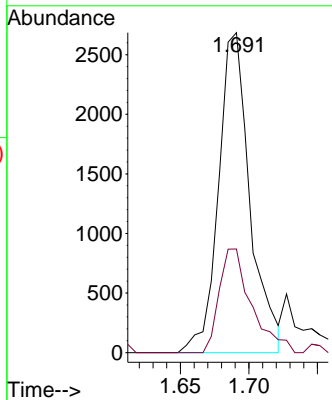
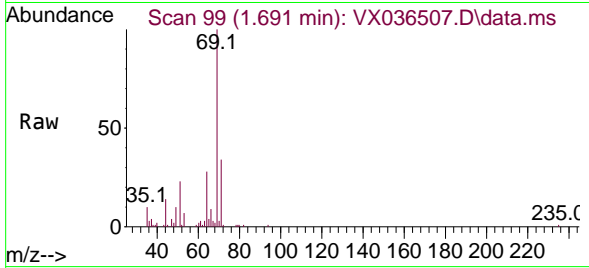




#8
 Chloroethane
 Concen: 2.293 ug/L
 RT: 1.691 min Scan# 99
 Delta R.T. 0.006 min
 Lab File: VX036507.D
 Acq: 12 Jul 2023 13:29

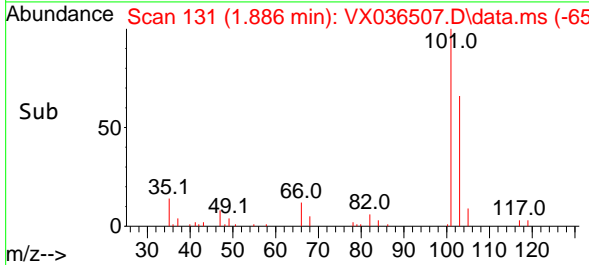
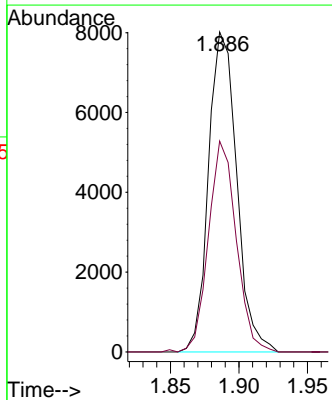
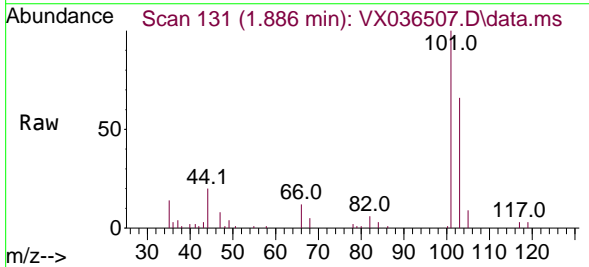
Instrument : MSVOA_X
 Client Sample Id : VSTD100647

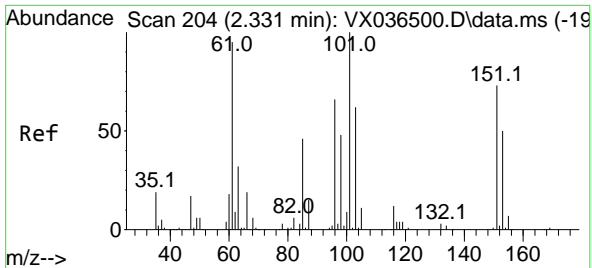
Tgt Ion	Resp	Ion Ratio	Lower	Upper
64	4289	100		
66		32.4	23.0	42.8



#9
 Trichlorofluoromethane
 Concen: 2.838 ug/L
 RT: 1.886 min Scan# 131
 Delta R.T. 0.000 min
 Lab File: VX036507.D
 Acq: 12 Jul 2023 13:29

Tgt Ion	Resp	Ion Ratio	Lower	Upper
101	11473	100		
103		64.9	51.7	77.5

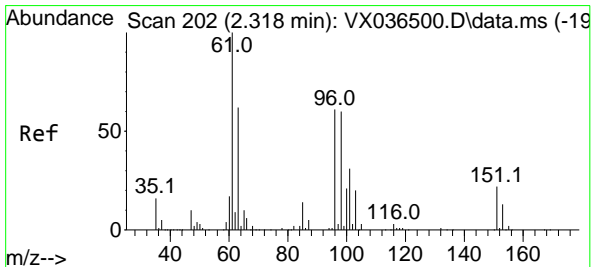
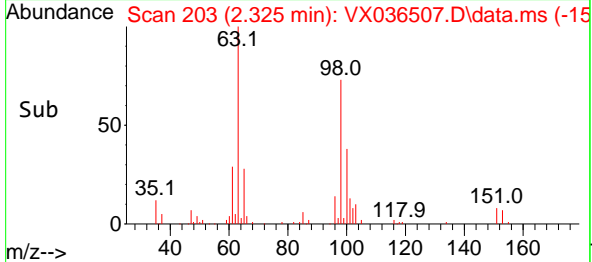
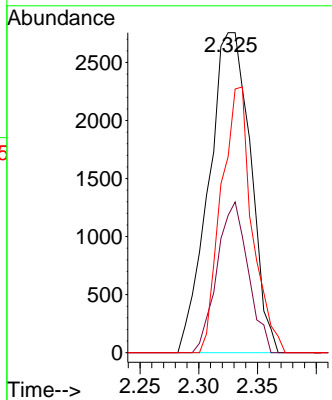
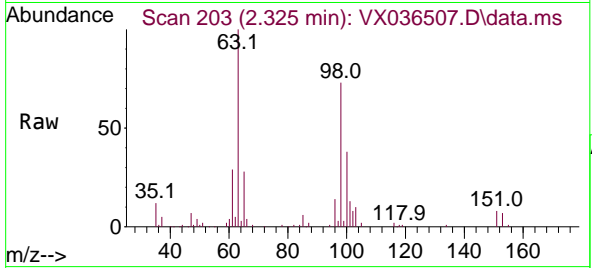




#10
 1,1,2-Trichloro-1,2,2-trifluoroethane
 Concen: 3.555 ug/L
 RT: 2.325 min Scan# 203
 Delta R.T. -0.006 min
 Lab File: VX036507.D
 Acq: 12 Jul 2023 13:29

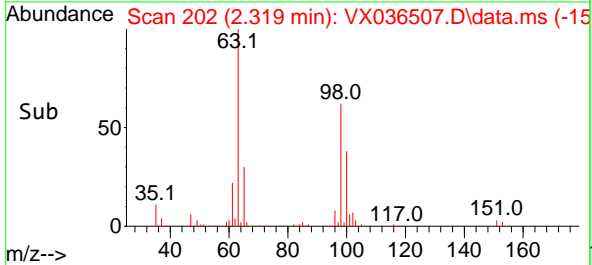
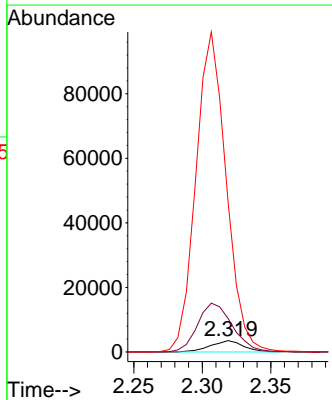
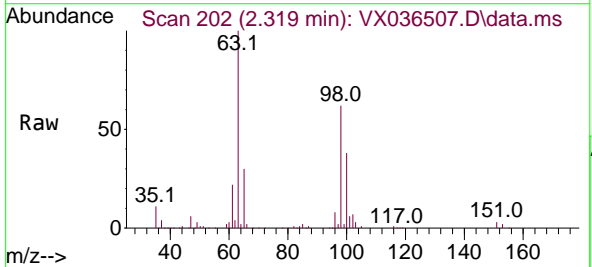
Instrument : MSVOA_X
 ClientSampleId : VSTD100647

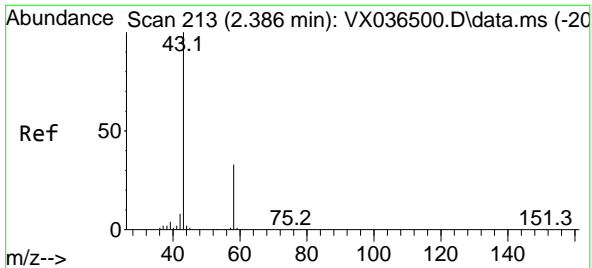
Tgt Ion	Resp	Lower	Upper
101	100		
85	35.1	35.8	53.8#
151	61.7	59.8	89.6



#12
 1,1-Dichloroethene
 Concen: 3.125 ug/L
 RT: 2.319 min Scan# 202
 Delta R.T. 0.000 min
 Lab File: VX036507.D
 Acq: 12 Jul 2023 13:29

Tgt Ion	Resp	Lower	Upper
96	100		
61	294.3	115.3	214.1#
63	1315.0	76.3	141.7#

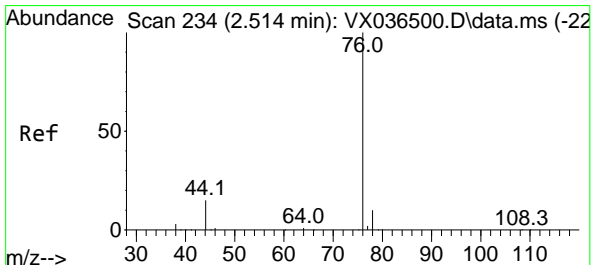
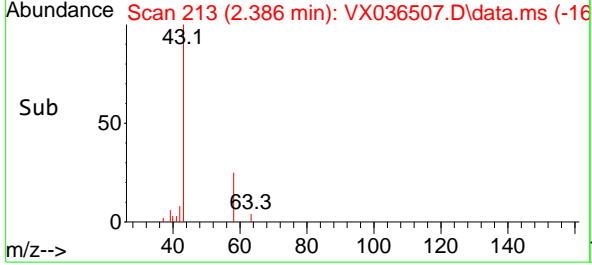
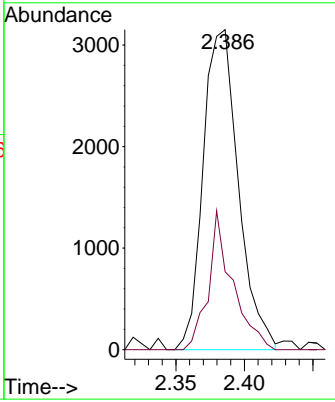
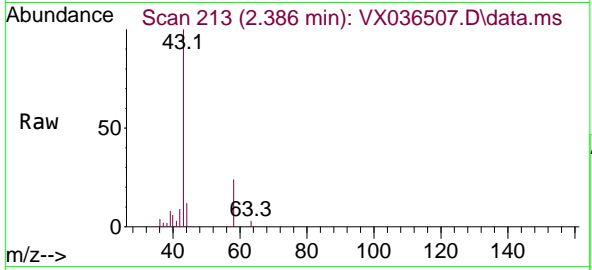




#13
 Acetone
 Concen: 4.998 ug/L
 RT: 2.386 min Scan# 213
 Delta R.T. 0.000 min
 Lab File: VX036507.D
 Acq: 12 Jul 2023 13:29

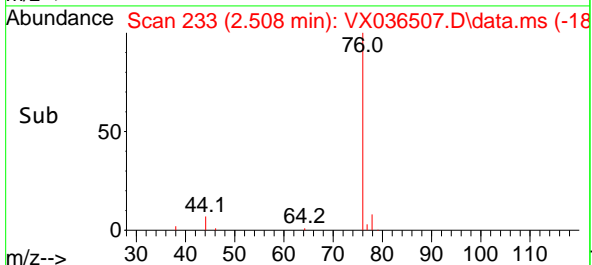
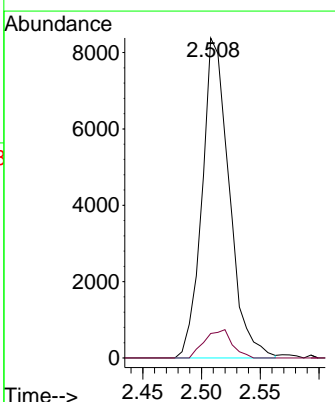
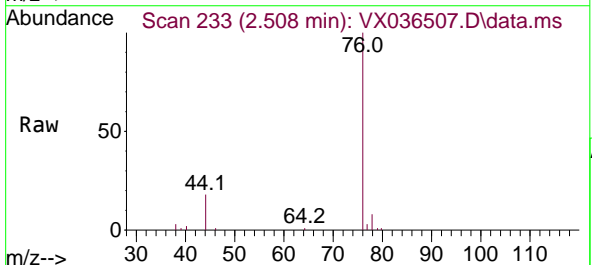
Instrument : MSVOA_X
 Client Sample Id : VSTD100647

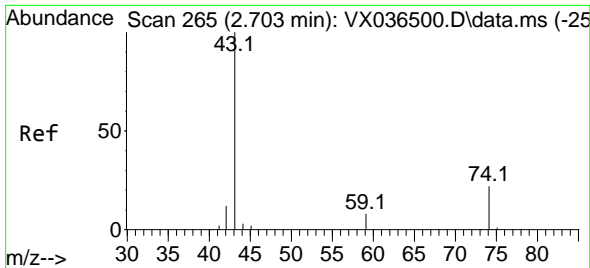
Tgt Ion	Resp	Ion Ratio	Lower	Upper
43	5640	100		
58		29.6	0.0	62.6



#14
 Carbon disulfide
 Concen: 2.682 ug/L
 RT: 2.508 min Scan# 233
 Delta R.T. -0.006 min
 Lab File: VX036507.D
 Acq: 12 Jul 2023 13:29

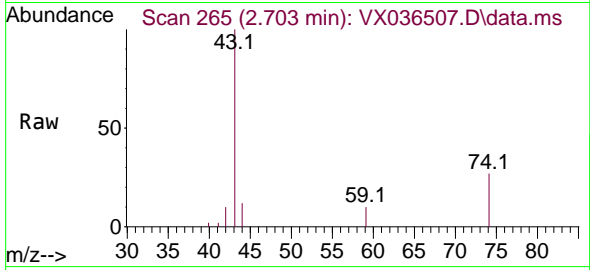
Tgt Ion	Resp	Ion Ratio	Lower	Upper
76	13471	100		
78		7.6	7.8	11.6#



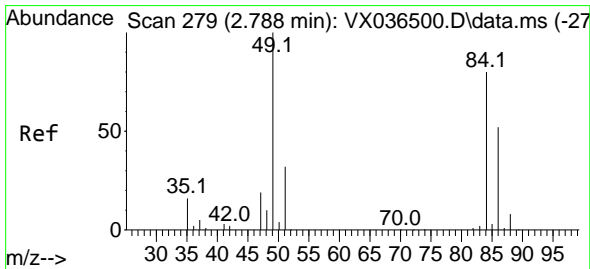
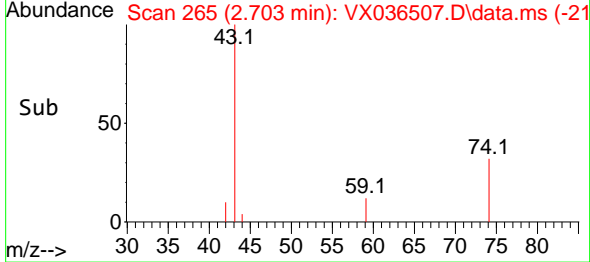
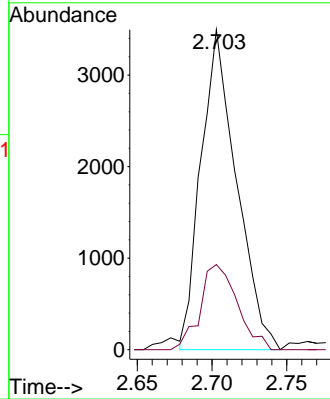


#15
 Methyl Acetate
 Concen: 2.575 ug/L
 RT: 2.703 min Scan# 265
 Delta R.T. 0.000 min
 Lab File: VX036507.D
 Acq: 12 Jul 2023 13:29

Instrument : MSVOA_X
 ClientSampleId : VSTD100647

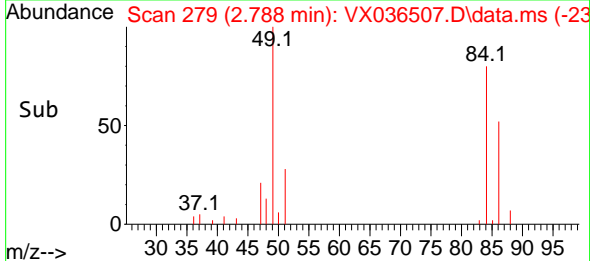
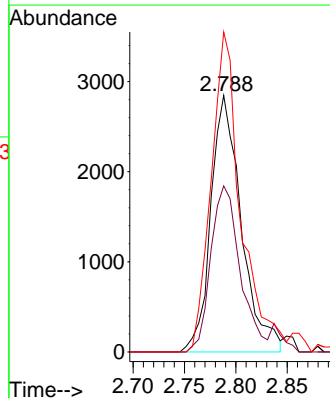
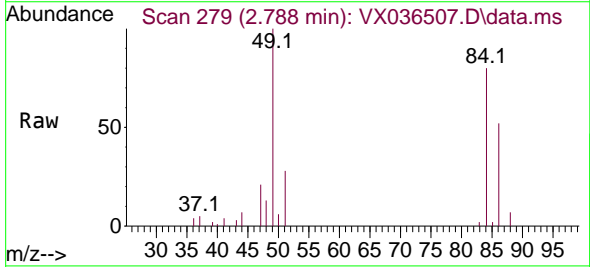


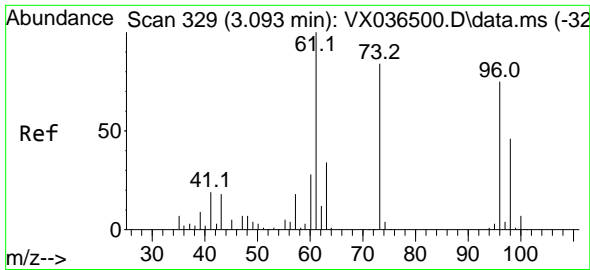
Tgt Ion: 43 Resp: 5777
 Ion Ratio Lower Upper
 43 100
 74 27.7 19.4 29.0



#16
 Methylene chloride
 Concen: 2.848 ug/L
 RT: 2.788 min Scan# 279
 Delta R.T. 0.000 min
 Lab File: VX036507.D
 Acq: 12 Jul 2023 13:29

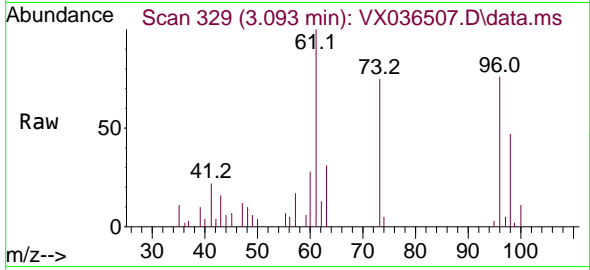
Tgt Ion: 84 Resp: 5884
 Ion Ratio Lower Upper
 84 100
 86 64.8 45.9 85.3
 49 124.8 87.6 162.8



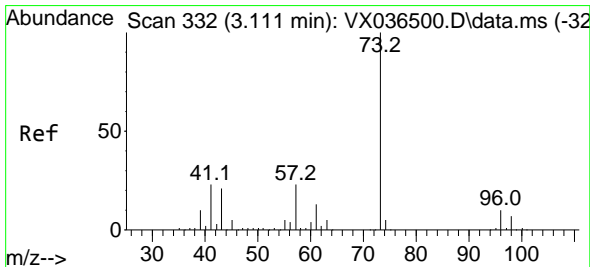
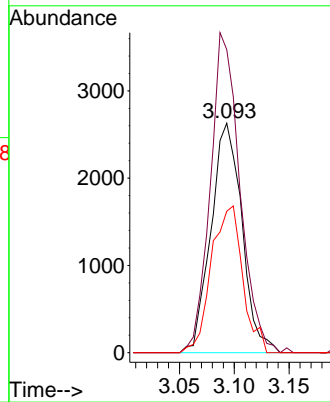
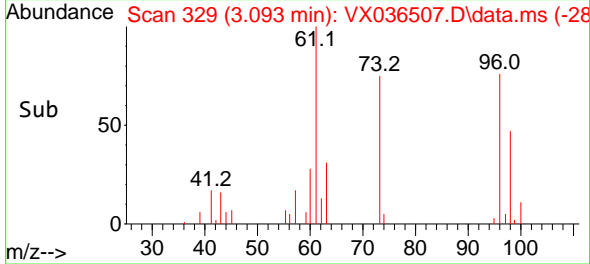


#17
 trans-1,2-Dichloroethene
 Concen: 2.744 ug/L
 RT: 3.093 min Scan# 317
 Delta R.T. 0.000 min
 Lab File: VX036507.D
 Acq: 12 Jul 2023 13:29

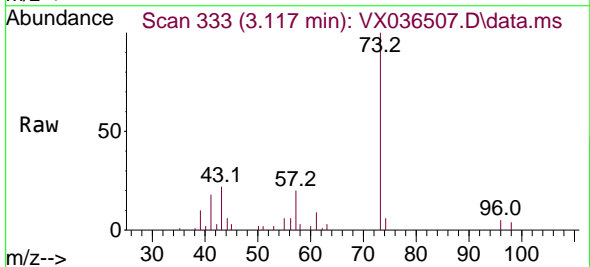
Instrument : MSVOA_X
 ClientSampleId : VSTD100647



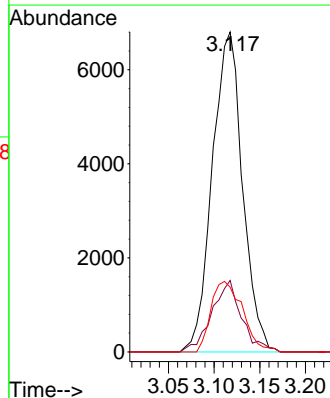
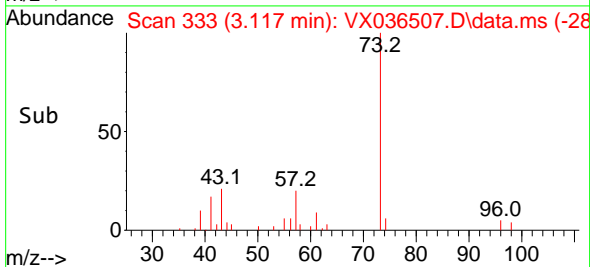
Tgt Ion: 96 Resp: 5175
 Ion Ratio Lower Upper
 96 100
 61 132.1 93.7 174.1
 98 61.6 42.9 79.7

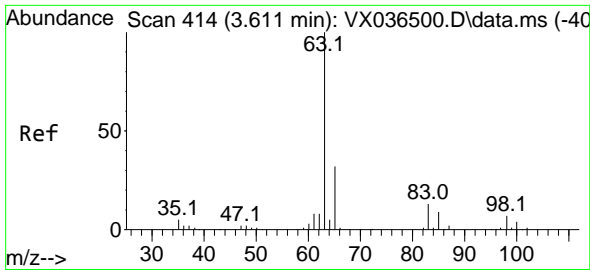


#18
 Methyl tert-butyl Ether
 Concen: 2.388 ug/L
 RT: 3.117 min Scan# 333
 Delta R.T. 0.006 min
 Lab File: VX036507.D
 Acq: 12 Jul 2023 13:29



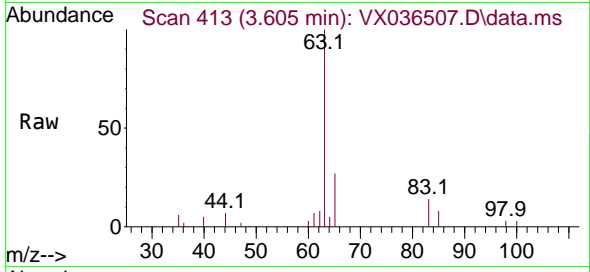
Tgt Ion: 73 Resp: 15662
 Ion Ratio Lower Upper
 73 100
 43 20.8 17.0 25.6
 57 23.1 17.4 26.0





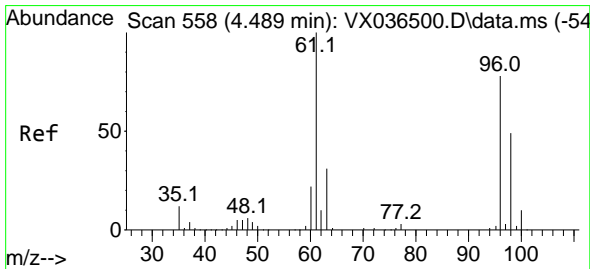
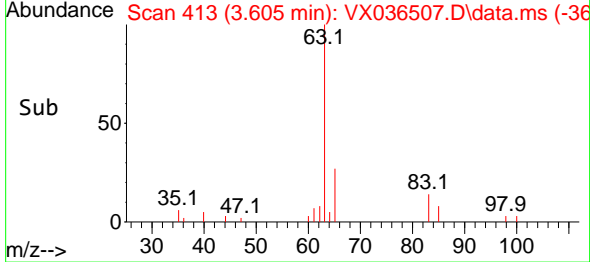
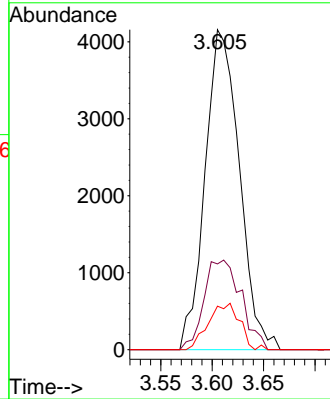
#19
 1,1-Dichloroethane
 Concen: 2.609 ug/L
 RT: 3.605 min Scan# 413
 Delta R.T. -0.006 min
 Lab File: VX036507.D
 Acq: 12 Jul 2023 13:29

Instrument : MSVOA_X
 ClientSampleId : VSTD100647



Tgt Ion: 63 Resp: 9629

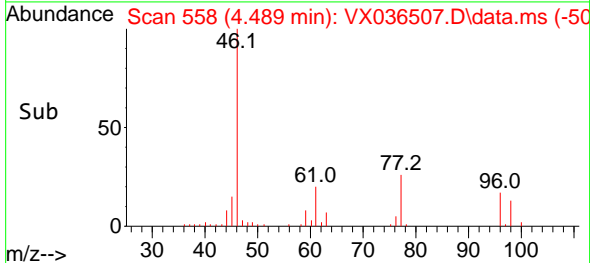
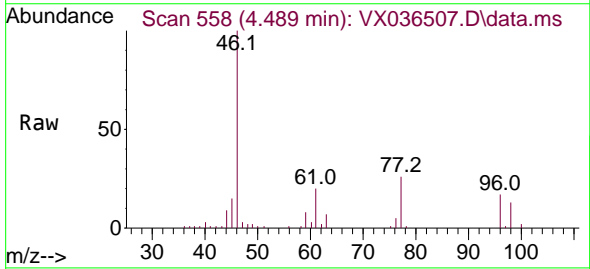
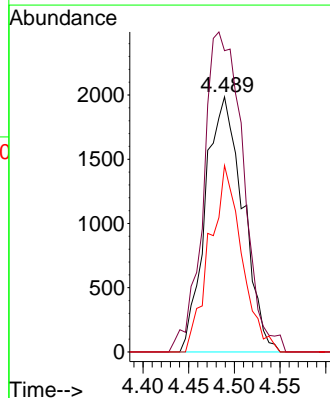
Ion	Ratio	Lower	Upper
63	100		
65	26.8	22.3	41.3
83	13.6	9.3	17.3

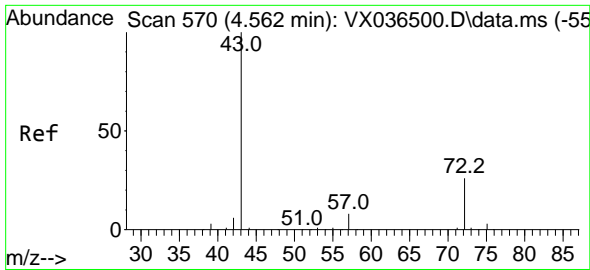


#20
 cis-1,2-Dichloroethene
 Concen: 2.583 ug/L
 RT: 4.489 min Scan# 558
 Delta R.T. 0.000 min
 Lab File: VX036507.D
 Acq: 12 Jul 2023 13:29

Tgt Ion: 96 Resp: 5693

Ion	Ratio	Lower	Upper
96	100		
61	118.1	90.1	167.3
98	73.1	44.1	81.9

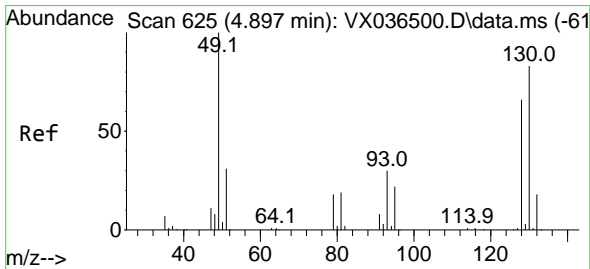
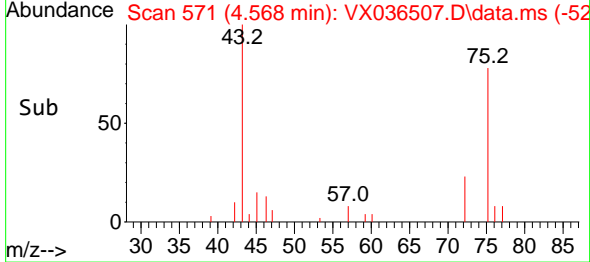
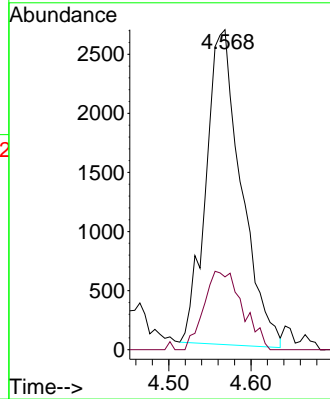
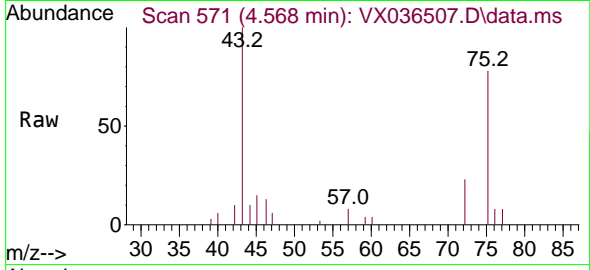




#22
 2-Butanone
 Concen: 4.843 ug/L
 RT: 4.568 min Scan# 51
 Delta R.T. 0.006 min
 Lab File: VX036507.D
 Acq: 12 Jul 2023 13:29

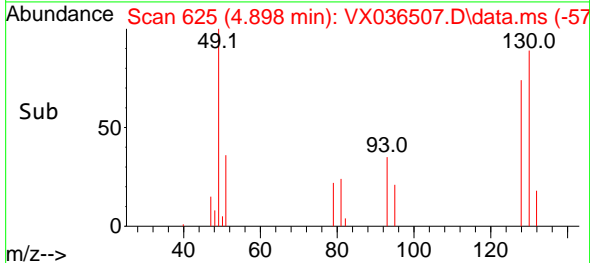
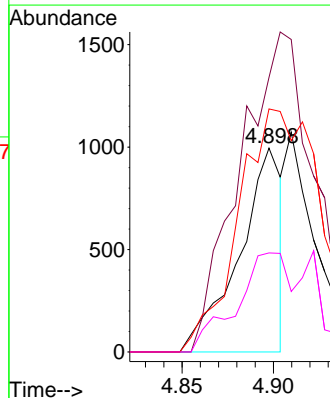
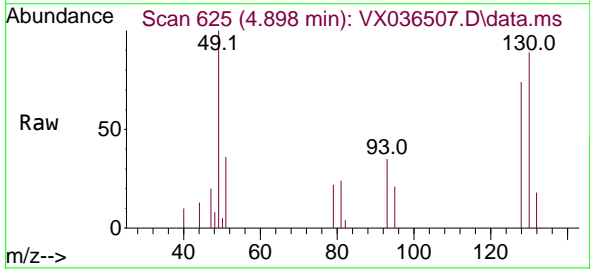
Instrument :
 MSVOA_X
 ClientSampleId :
 VSTD100647

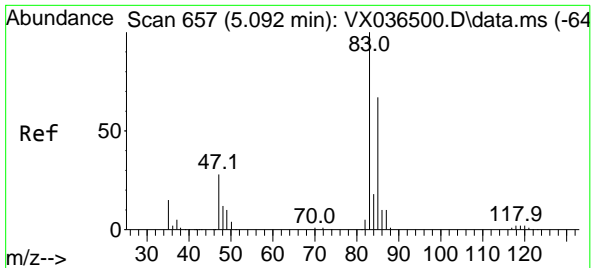
Tgt Ion: 43 Resp: 7948
 Ion Ratio Lower Upper
 43 100
 72 15.7 13.8 41.3



#23
 Bromochloromethane
 Concen: 1.468 ug/L
 RT: 4.898 min Scan# 625
 Delta R.T. 0.000 min
 Lab File: VX036507.D
 Acq: 12 Jul 2023 13:29

Tgt Ion: 128 Resp: 1618
 Ion Ratio Lower Upper
 128 100
 49 134.7 105.8 196.4
 130 119.2 88.1 163.7
 51 48.5 37.8 56.6

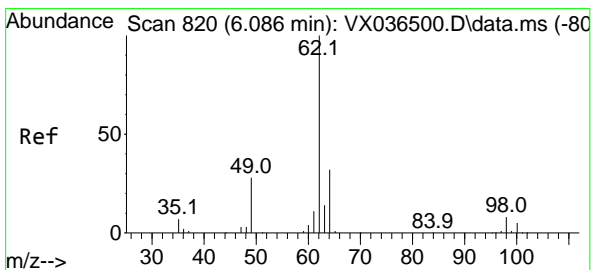
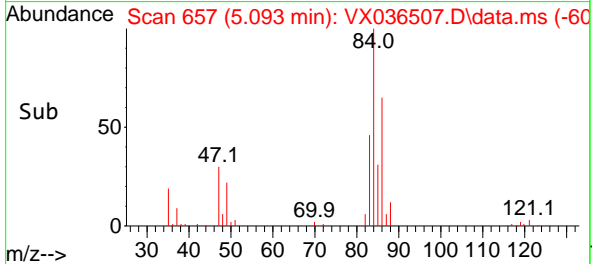
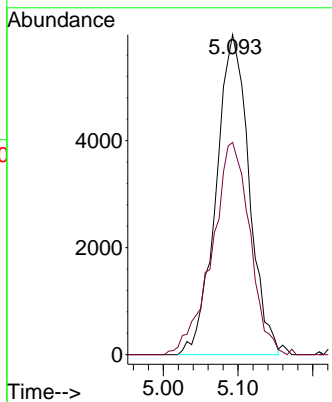
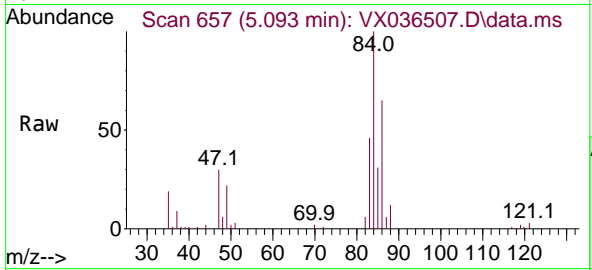




#25
 Chloroform
 Concen: 4.742 ug/L
 RT: 5.093 min Scan# 61
 Delta R.T. 0.000 min
 Lab File: VX036507.D
 Acq: 12 Jul 2023 13:29

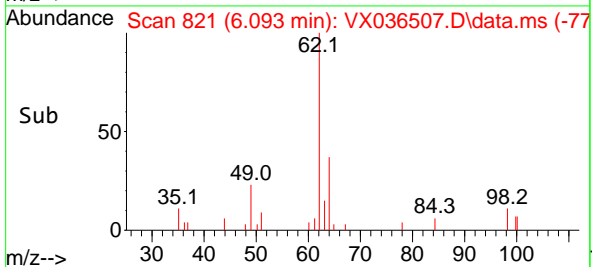
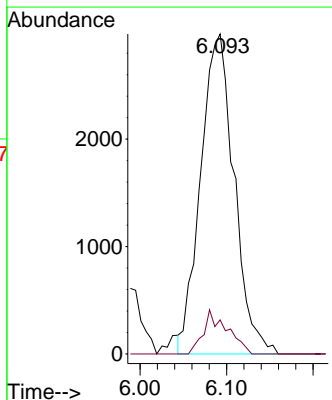
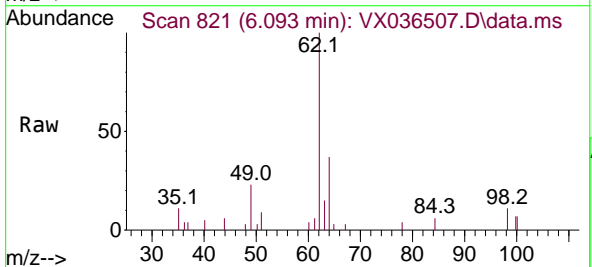
Instrument : MSVOA_X
 ClientSampleId : VSTD100647

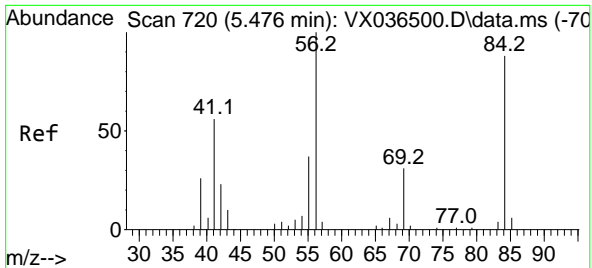
Tgt Ion: 83 Resp: 18378
 Ion Ratio Lower Upper
 83 100
 85 66.3 46.8 87.0



#27
 1,2-Dichloroethane
 Concen: 2.612 ug/L
 RT: 6.093 min Scan# 821
 Delta R.T. 0.006 min
 Lab File: VX036507.D
 Acq: 12 Jul 2023 13:29

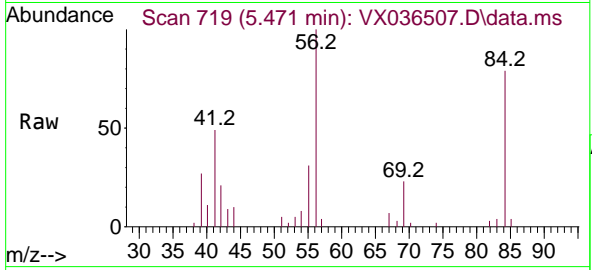
Tgt Ion: 62 Resp: 8007
 Ion Ratio Lower Upper
 62 100
 98 10.6 6.5 9.7#





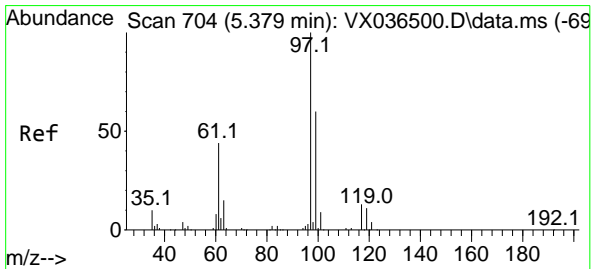
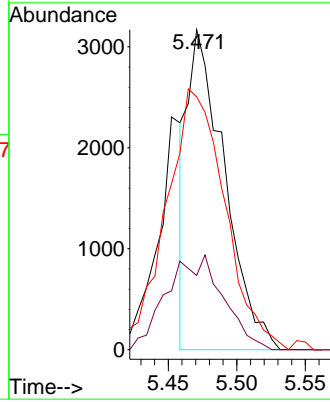
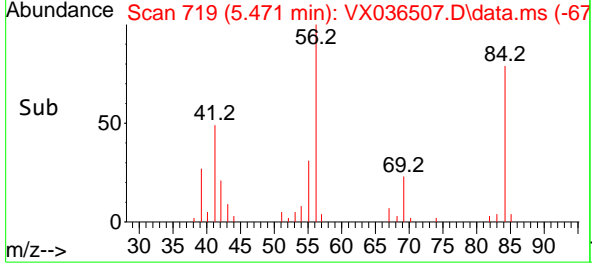
#29
 Cyclohexane
 Concen: 1.974 ug/L
 RT: 5.471 min Scan# 719
 Delta R.T. -0.006 min
 Lab File: VX036507.D
 Acq: 12 Jul 2023 13:29

Instrument : MSVOA_X
 ClientSampleId : VSTD100647

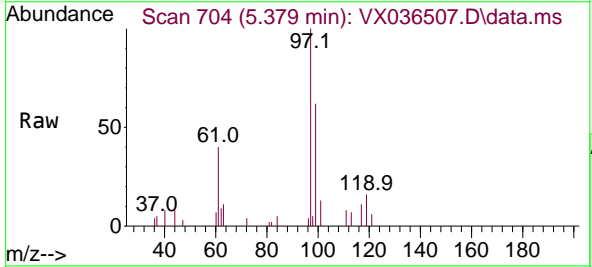


Tgt Ion: 56 Resp: 5934

Ion	Ratio	Lower	Upper
56	100		
69	19.3	25.3	37.9#
84	130.9	73.0	109.4#

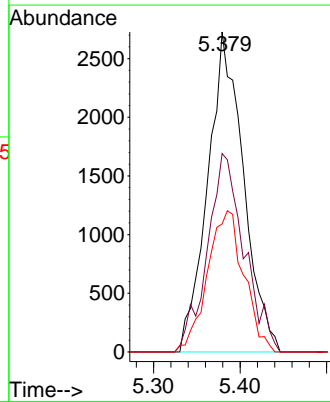
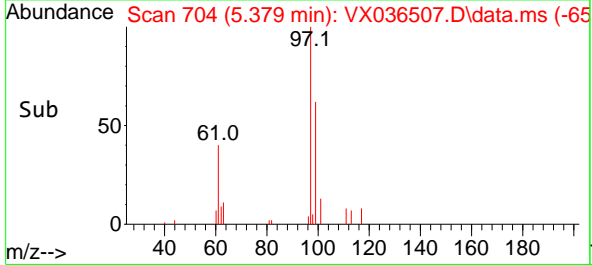


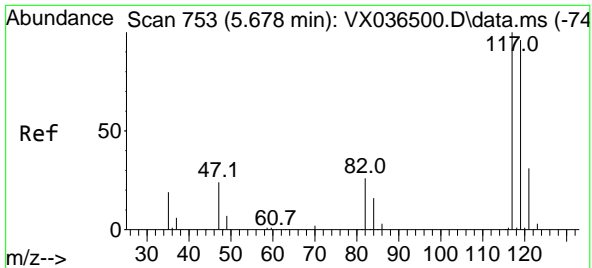
#30
 1,1,1-Trichloroethane
 Concen: 2.467 ug/L
 RT: 5.379 min Scan# 704
 Delta R.T. 0.000 min
 Lab File: VX036507.D
 Acq: 12 Jul 2023 13:29



Tgt Ion: 97 Resp: 7796

Ion	Ratio	Lower	Upper
97	100		
99	59.5	50.6	76.0
61	45.1	34.7	52.1

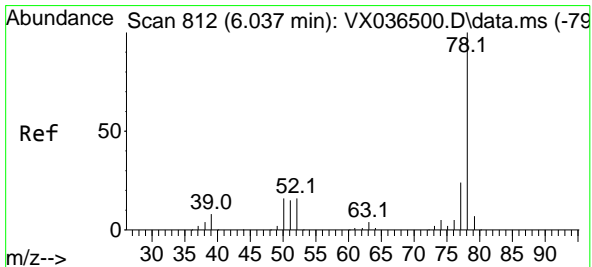
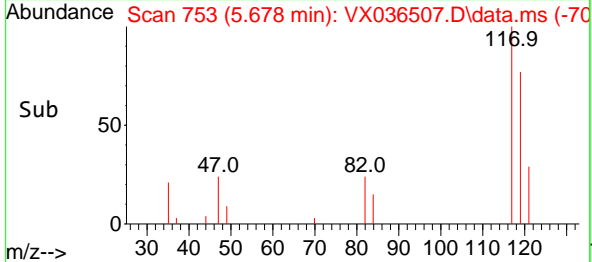
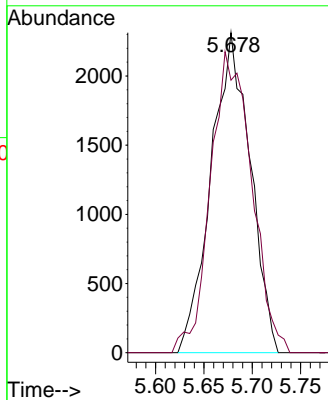
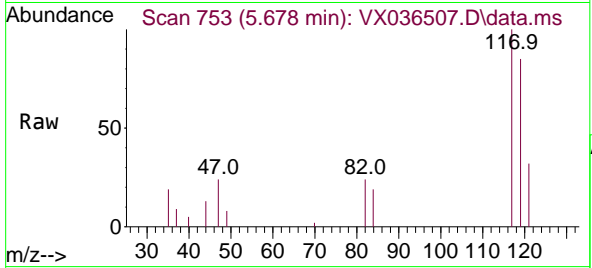




#31
 Carbon tetrachloride
 Concen: 2.456 ug/L
 RT: 5.678 min Scan# 711
 Delta R.T. 0.000 min
 Lab File: VX036507.D
 Acq: 12 Jul 2023 13:29

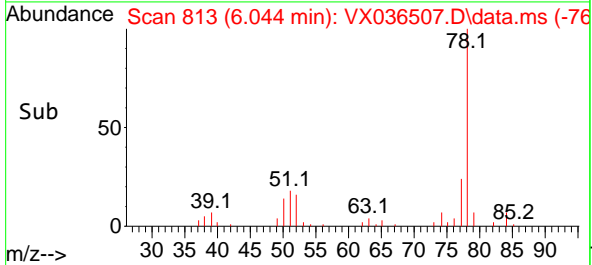
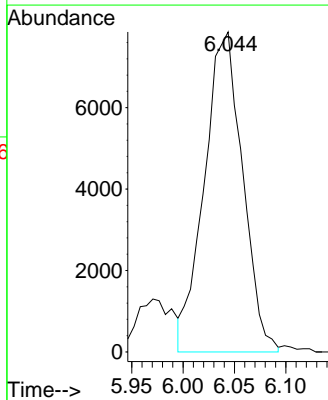
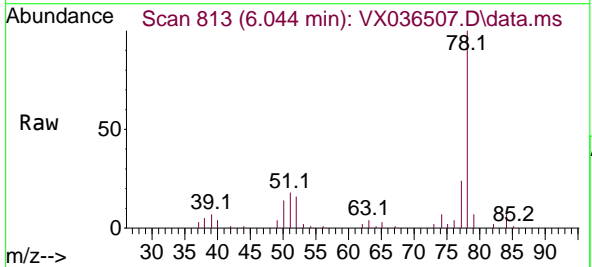
Instrument : MSVOA_X
 ClientSampleId : VSTD100647

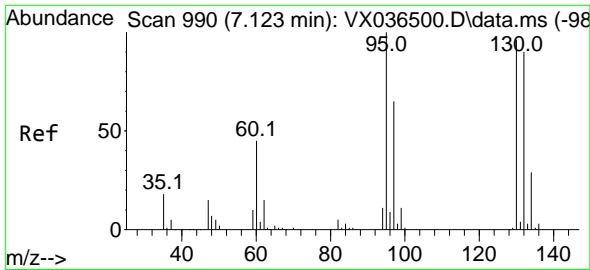
Tgt Ion:117 Resp: 6504
 Ion Ratio Lower Upper
 117 100
 119 98.9 76.6 114.8



#33
 Benzene
 Concen: 2.561 ug/L
 RT: 6.044 min Scan# 813
 Delta R.T. 0.006 min
 Lab File: VX036507.D
 Acq: 12 Jul 2023 13:29

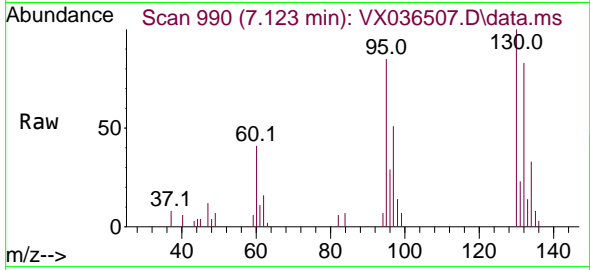
Tgt Ion: 78 Resp: 20333





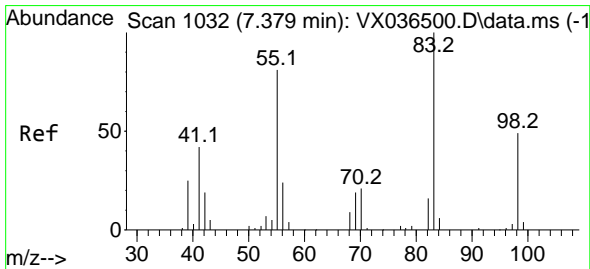
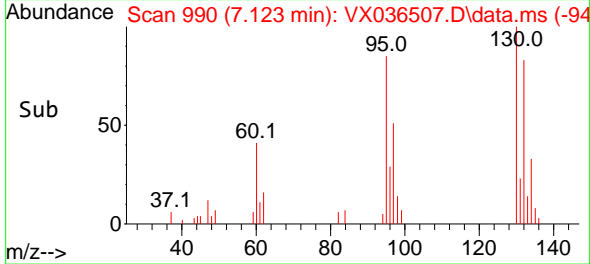
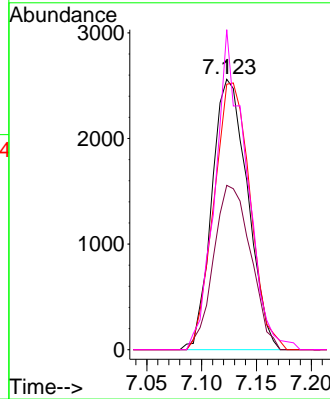
#34
 Trichloroethene
 Concen: 2.679 ug/L
 RT: 7.123 min Scan# 94
 Delta R.T. 0.000 min
 Lab File: VX036507.D
 Acq: 12 Jul 2023 13:29

Instrument :
 MSVOA_X
 ClientSampleId :
 VSTD100647



Tgt Ion: 95 Resp: 5801

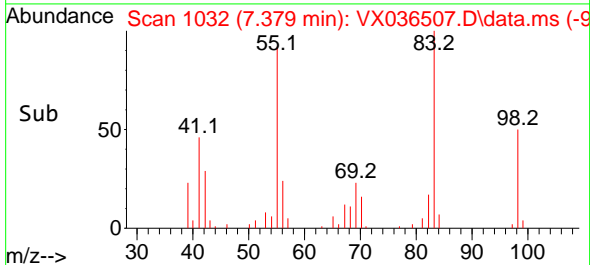
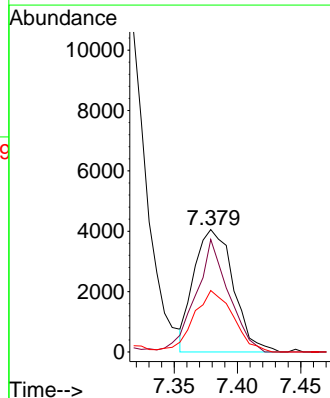
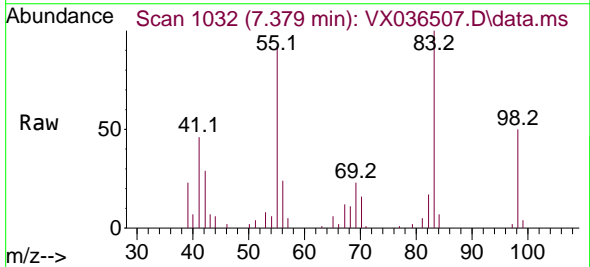
Ion	Ratio	Lower	Upper
95	100		
97	60.8	45.3	84.1
132	98.2	63.0	117.0
130	118.3	67.3	125.1

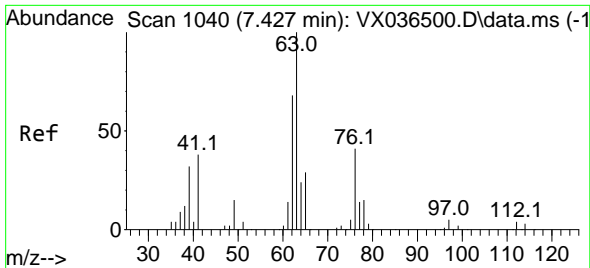


#35
 Methylcyclohexane
 Concen: 2.784 ug/L
 RT: 7.379 min Scan# 1032
 Delta R.T. 0.000 min
 Lab File: VX036507.D
 Acq: 12 Jul 2023 13:29

Tgt Ion: 83 Resp: 8778

Ion	Ratio	Lower	Upper
83	100		
55	76.8	59.0	88.4
98	50.4	37.5	56.3

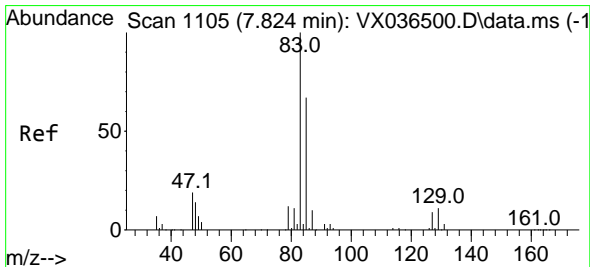
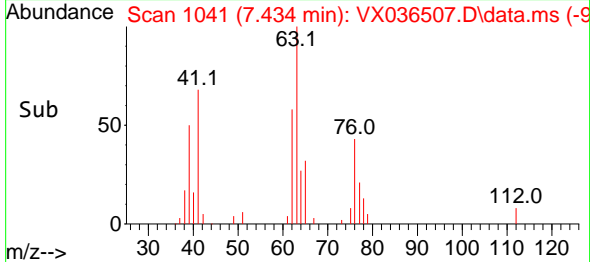
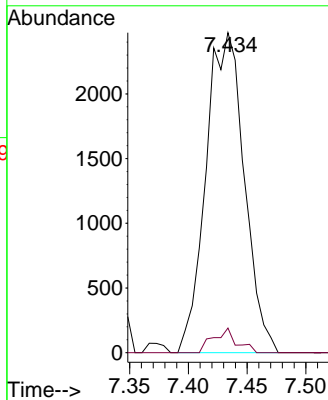
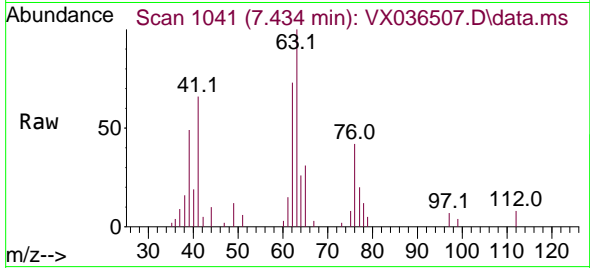




#37
 1,2-Dichloropropane
 Concen: 2.568 ug/L
 RT: 7.434 min Scan# 1041
 Delta R.T. 0.006 min
 Lab File: VX036507.D
 Acq: 12 Jul 2023 13:29

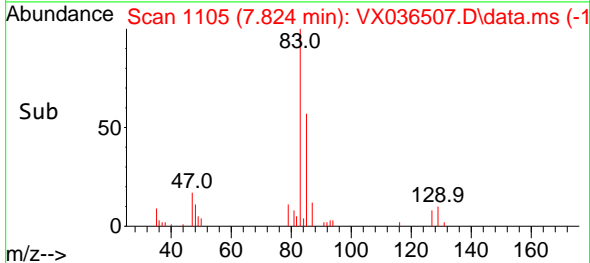
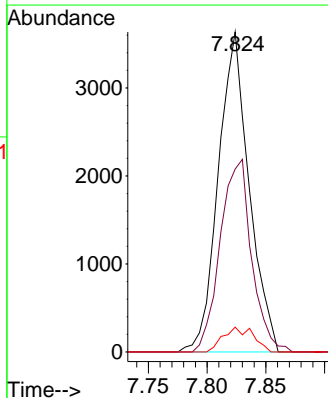
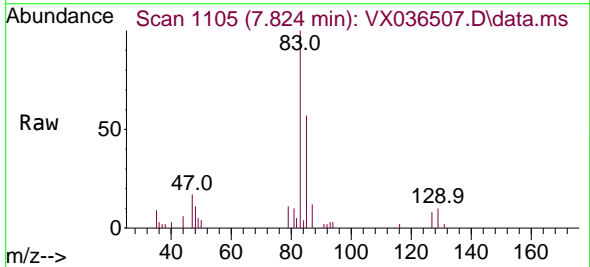
Instrument : MSVOA_X
 ClientSampleId : VSTD100647

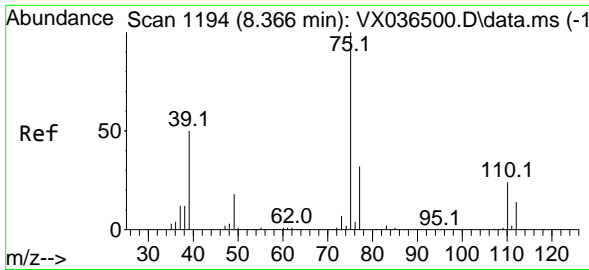
Tgt Ion: 63 Resp: 5605
 Ion Ratio Lower Upper
 63 100
 112 0.9 3.1 4.7#



#38
 Bromodichloromethane
 Concen: 2.438 ug/L
 RT: 7.824 min Scan# 1105
 Delta R.T. 0.000 min
 Lab File: VX036507.D
 Acq: 12 Jul 2023 13:29

Tgt Ion: 83 Resp: 6634
 Ion Ratio Lower Upper
 83 100
 85 57.1 46.9 87.1
 127 7.8 7.2 10.8

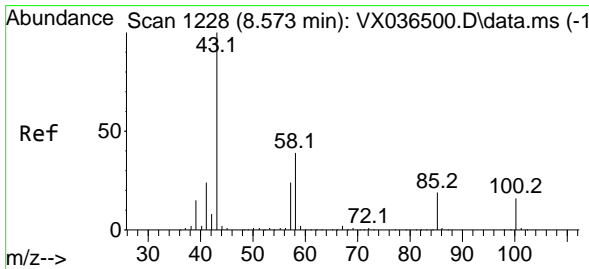
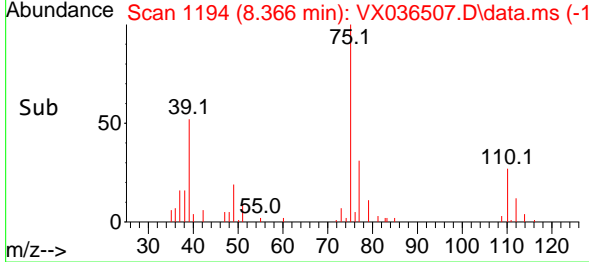
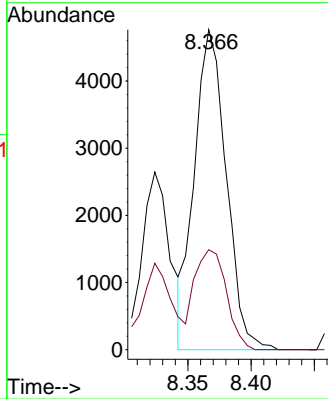
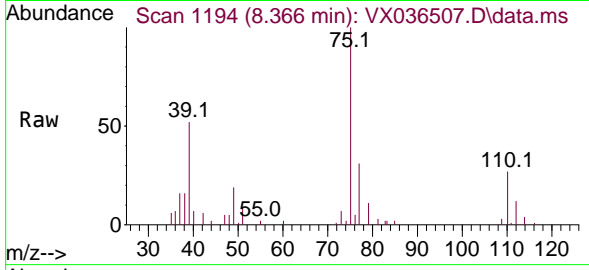




#39
 cis-1,3-Dichloropropene
 Concen: 2.426 ug/L
 RT: 8.366 min Scan# 1194
 Delta R.T. 0.000 min
 Lab File: VX036507.D
 Acq: 12 Jul 2023 13:29

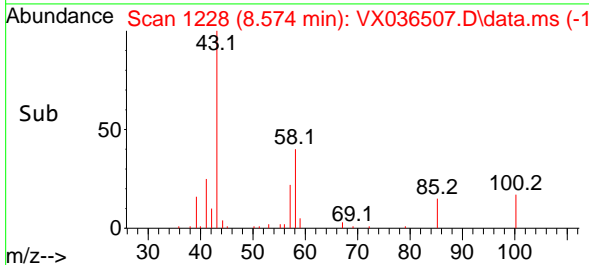
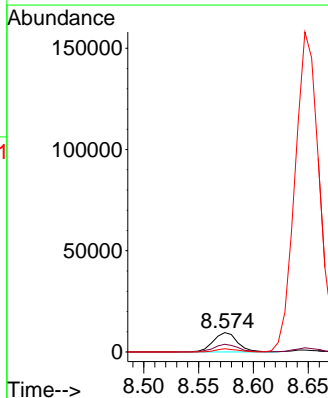
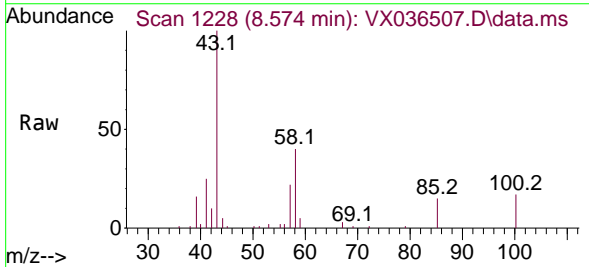
Instrument : MSVOA_X
 ClientSampleId : VSTD100647

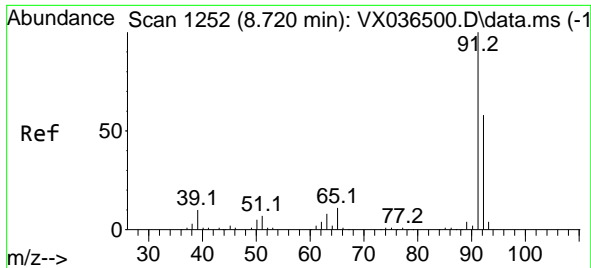
Tgt Ion: 75 Resp: 8344
 Ion Ratio Lower Upper
 75 100
 77 31.2 22.7 42.1



#40
 4-Methyl-2-pentanone
 Concen: 4.858 ug/L
 RT: 8.574 min Scan# 1228
 Delta R.T. 0.000 min
 Lab File: VX036507.D
 Acq: 12 Jul 2023 13:29

Tgt Ion: 43 Resp: 14779
 Ion Ratio Lower Upper
 43 100
 58 40.3 31.4 47.0
 100 14.6 12.3 18.5

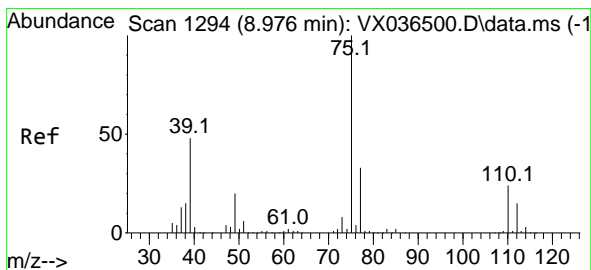
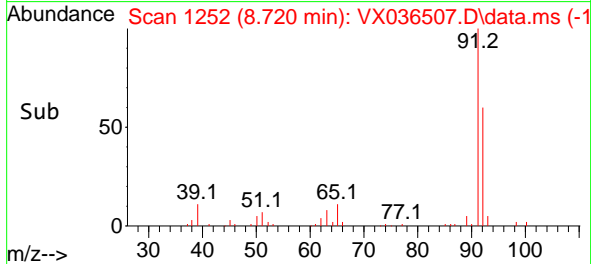
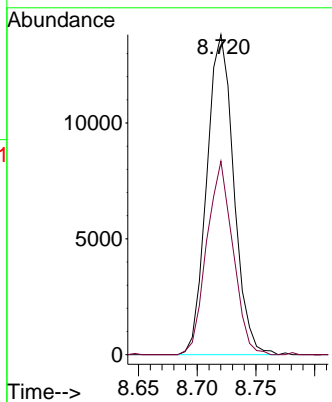
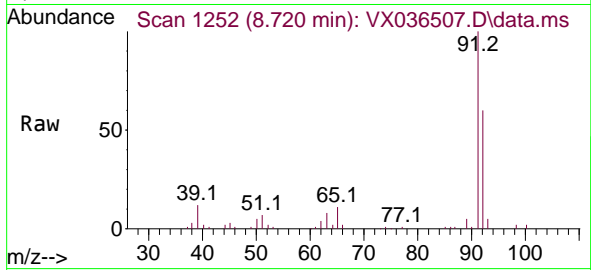




#42
 Toluene
 Concen: 2.614 ug/L
 RT: 8.720 min Scan# 11
 Delta R.T. 0.000 min
 Lab File: VX036507.D
 Acq: 12 Jul 2023 13:29

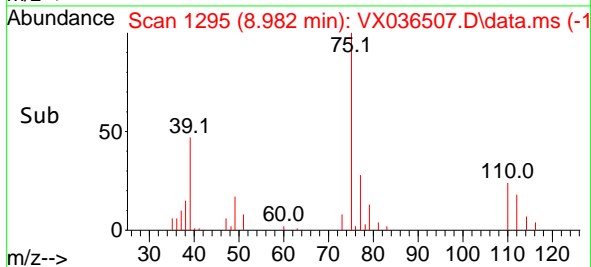
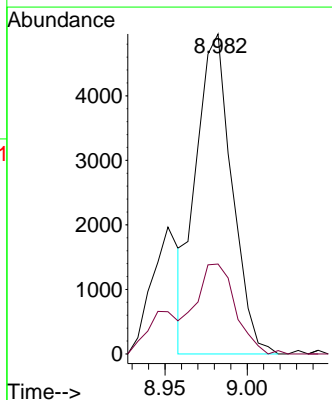
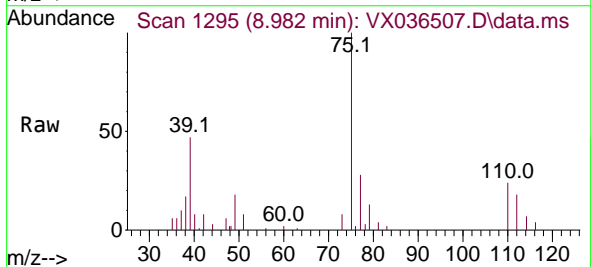
Instrument :
 MSVOA_X
 ClientSampleId :
 VSTD100647

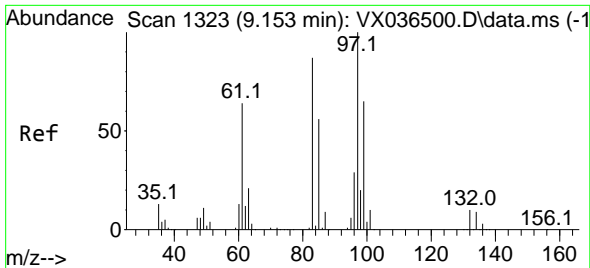
Tgt Ion: 91 Resp: 22079
 Ion Ratio Lower Upper
 91 100
 92 60.5 40.3 74.9



#44
 trans-1,3-Dichloropropene
 Concen: 2.377 ug/L
 RT: 8.982 min Scan# 1295
 Delta R.T. 0.006 min
 Lab File: VX036507.D
 Acq: 12 Jul 2023 13:29

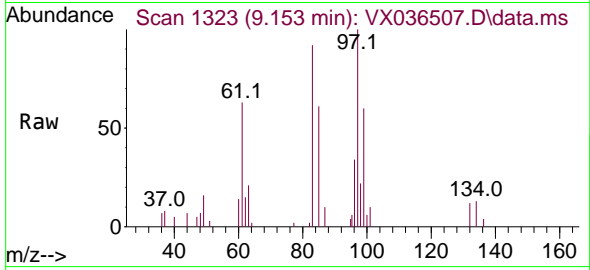
Tgt Ion: 75 Resp: 7527
 Ion Ratio Lower Upper
 75 100
 77 28.1 22.9 42.5





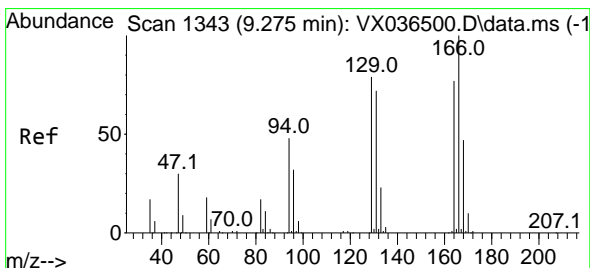
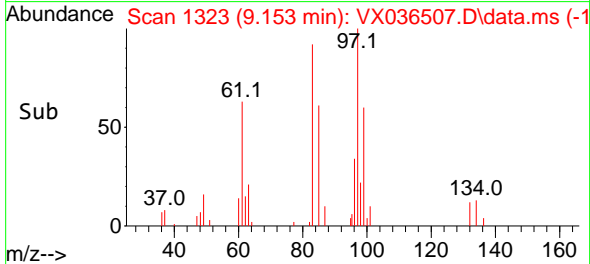
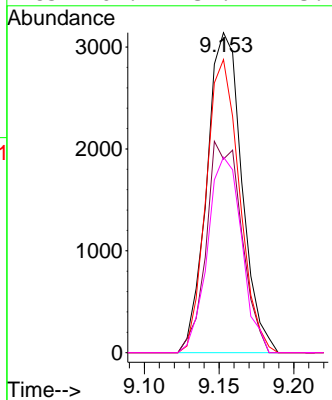
#45
 1,1,2-Trichloroethane
 Concen: 2.463 ug/L
 RT: 9.153 min Scan# 11
 Delta R.T. 0.000 min
 Lab File: VX036507.D
 Acq: 12 Jul 2023 13:29

Instrument : MSVOA_X
 ClientSampleId : VSTD100647

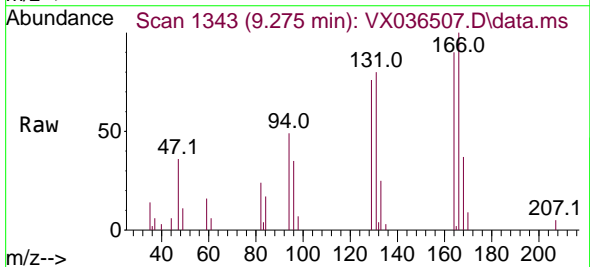


Tgt Ion: 97 Resp: 5110

Ion	Ratio	Lower	Upper
97	100		
99	60.5	45.1	83.9
83	91.6	60.6	112.6
85	61.1	39.4	73.2

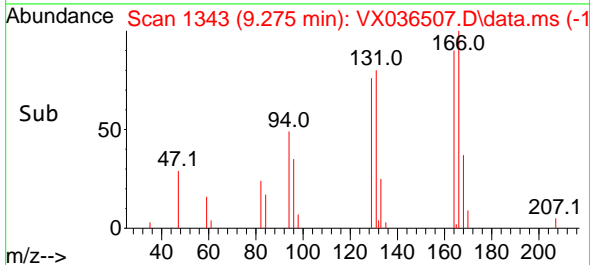
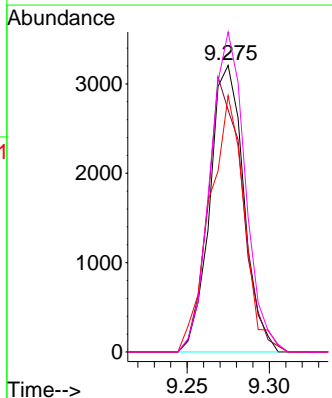


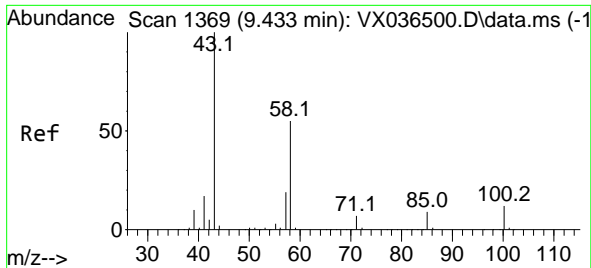
#46
 Tetrachloroethene
 Concen: 2.990 ug/L
 RT: 9.275 min Scan# 1343
 Delta R.T. 0.000 min
 Lab File: VX036507.D
 Acq: 12 Jul 2023 13:29



Tgt Ion: 164 Resp: 4600

Ion	Ratio	Lower	Upper
164	100		
129	84.4	72.0	133.8
131	89.5	65.7	121.9
166	111.7	91.3	169.5



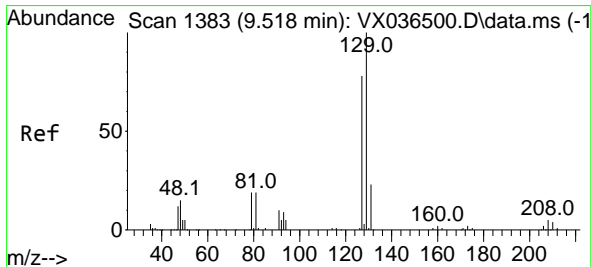
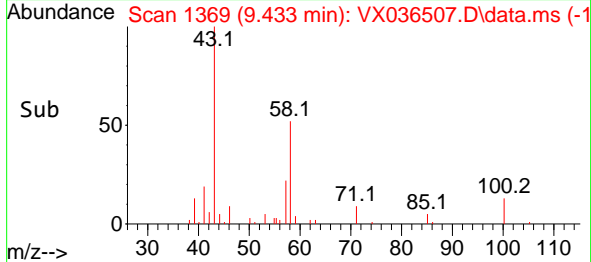
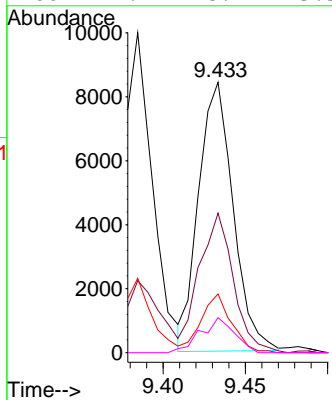
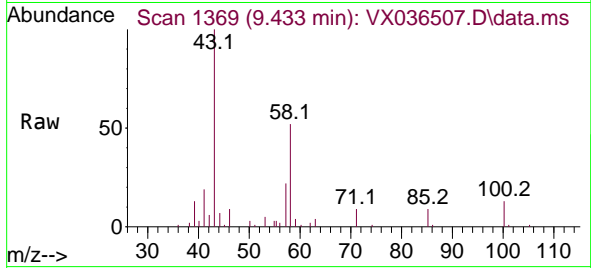


#48
 2-Hexanone
 Concen: 5.164 ug/L
 RT: 9.433 min Scan# 1
 Delta R.T. 0.000 min
 Lab File: VX036507.D
 Acq: 12 Jul 2023 13:29

Instrument : MSVOA_X
 ClientSampleId : VSTD100647

Tgt Ion: 43 Resp: 12276

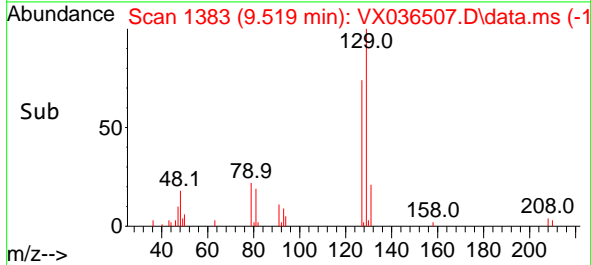
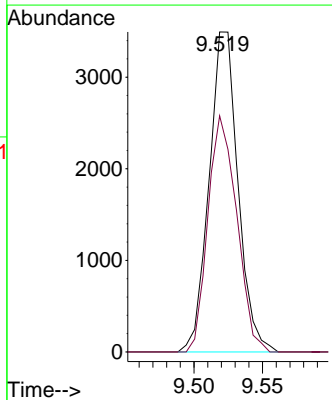
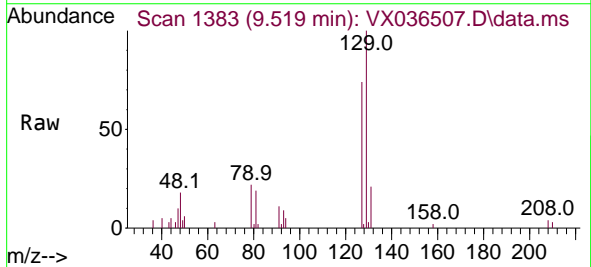
Ion	Ratio	Lower	Upper
43	100		
58	51.5	42.5	63.7
57	19.4	15.0	22.4
100	12.7	8.9	13.3

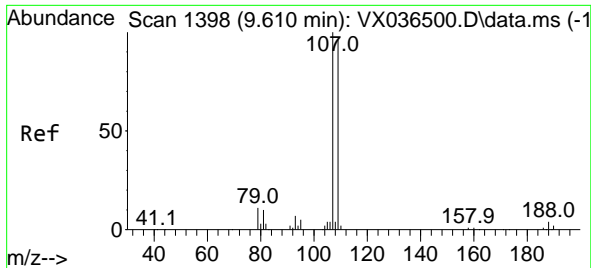


#49
 Dibromochloromethane
 Concen: 2.466 ug/L
 RT: 9.519 min Scan# 1383
 Delta R.T. 0.000 min
 Lab File: VX036507.D
 Acq: 12 Jul 2023 13:29

Tgt Ion: 129 Resp: 5135

Ion	Ratio	Lower	Upper
129	100		
127	73.8	54.8	101.8

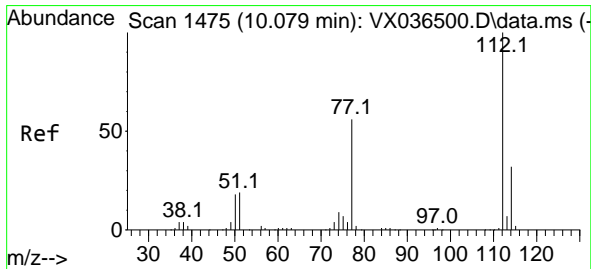
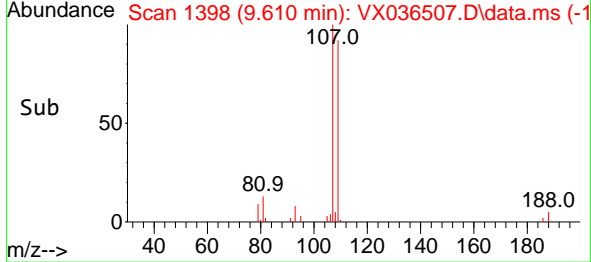
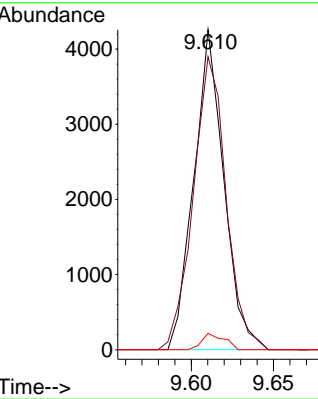
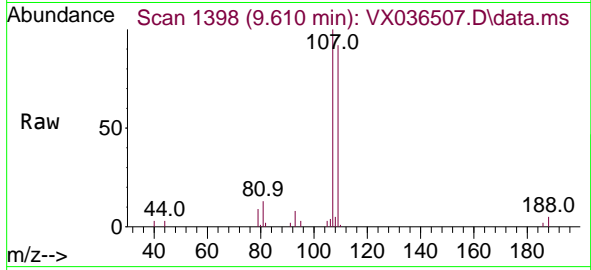




#50
 1,2-Dibromoethane
 Concen: 2.432 ug/L
 RT: 9.610 min Scan# 1398
 Delta R.T. 0.000 min
 Lab File: VX036507.D
 Acq: 12 Jul 2023 13:29

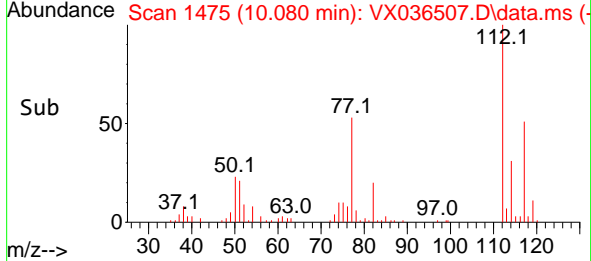
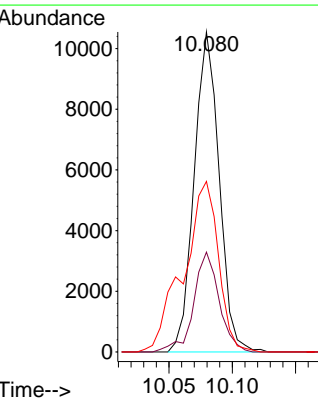
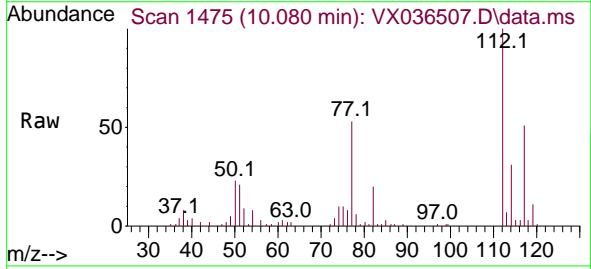
Instrument : MSVOA_X
 ClientSampleId : VSTD100647

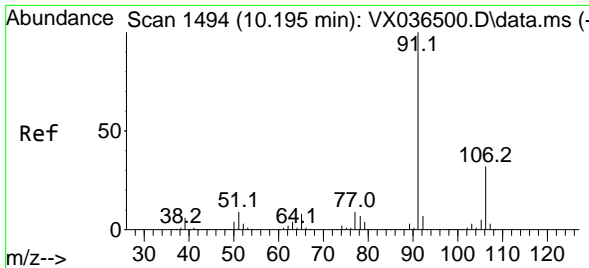
Tgt Ion	Resp	Lower	Upper
107	100		
109	91.6	67.3	124.9
188	5.1	2.8	4.2#



#51
 Chlorobenzene
 Concen: 2.636 ug/L
 RT: 10.080 min Scan# 1475
 Delta R.T. 0.000 min
 Lab File: VX036507.D
 Acq: 12 Jul 2023 13:29

Tgt Ion	Resp	Lower	Upper
112	100		
114	31.2	22.3	41.3
77	53.3	45.2	67.8

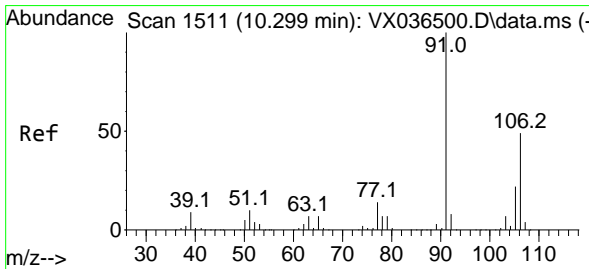
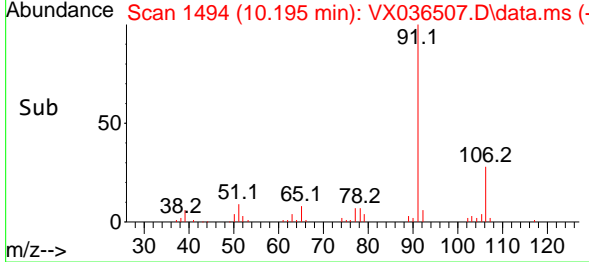
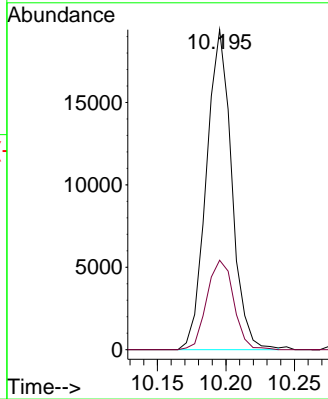
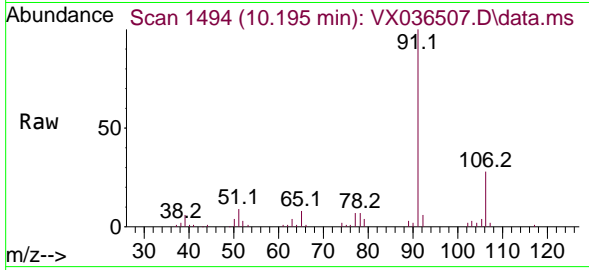




#52
 Ethylbenzene
 Concen: 2.682 ug/L
 RT: 10.195 min Scan# 1494
 Delta R.T. 0.000 min
 Lab File: VX036507.D
 Acq: 12 Jul 2023 13:29

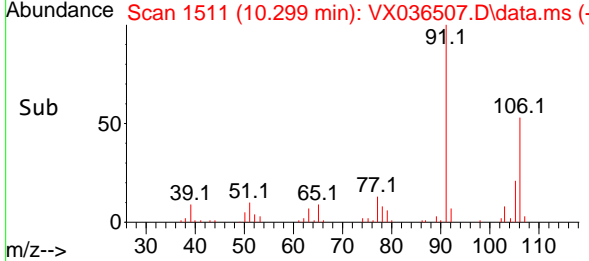
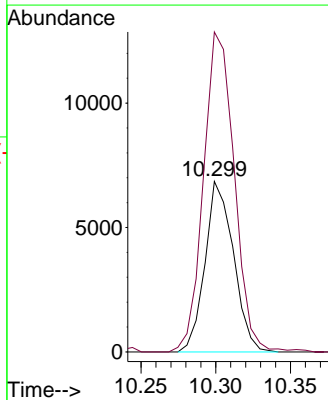
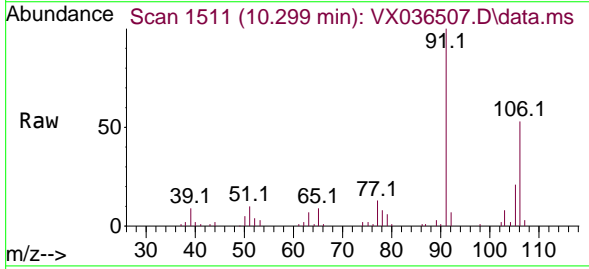
Instrument : MSVOA_X
 ClientSampleId : VSTD100647

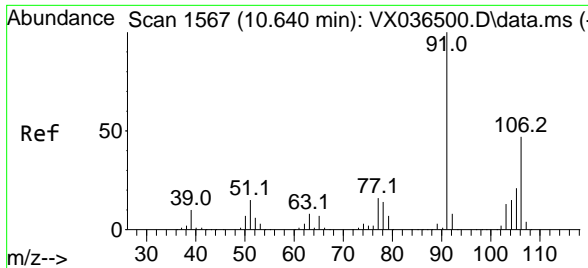
Tgt Ion: 91 Resp: 24927
 Ion Ratio Lower Upper
 91 100
 106 28.0 22.1 41.1



#53
 m,p-Xylene
 Concen: 2.558 ug/L
 RT: 10.299 min Scan# 1511
 Delta R.T. 0.000 min
 Lab File: VX036507.D
 Acq: 12 Jul 2023 13:29

Tgt Ion: 106 Resp: 9072
 Ion Ratio Lower Upper
 106 100
 91 187.5 143.1 265.9

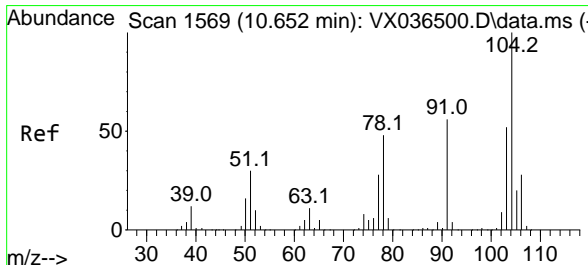
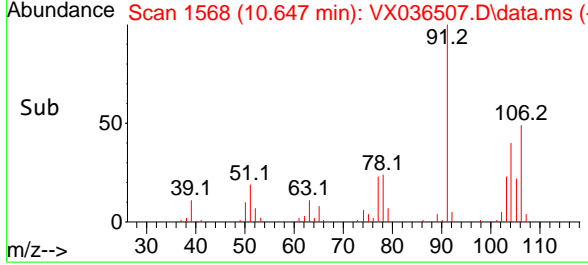
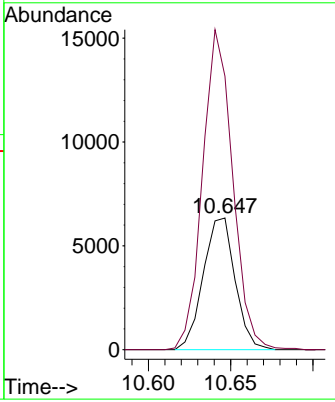
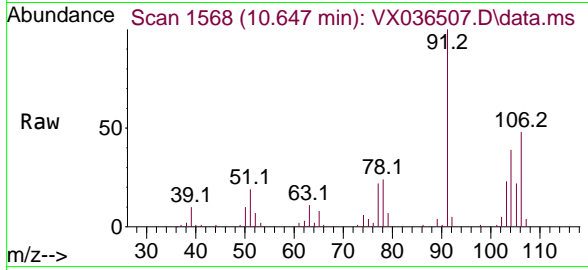




#54
 o-Xylene
 Concen: 2.434 ug/L
 RT: 10.647 min Scan# 11
 Delta R.T. 0.006 min
 Lab File: VX036507.D
 Acq: 12 Jul 2023 13:29

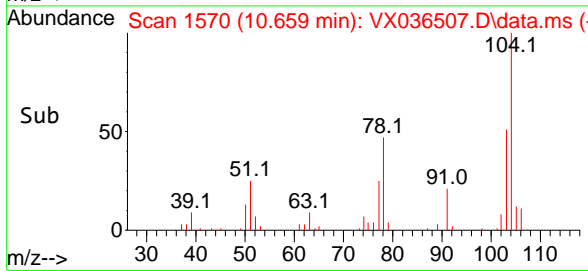
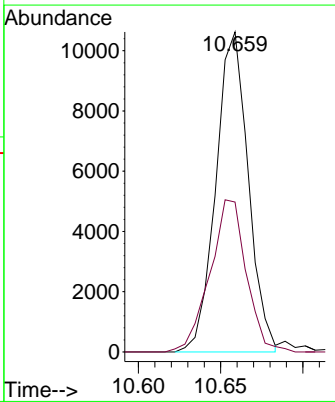
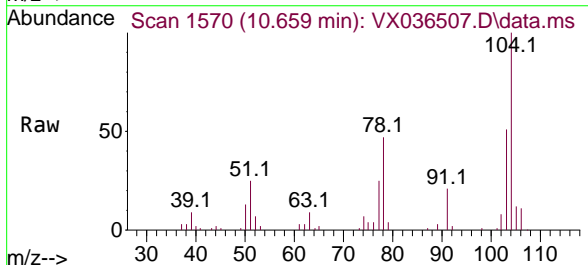
Instrument : MSVOA_X
 ClientSampleId : VSTD100647

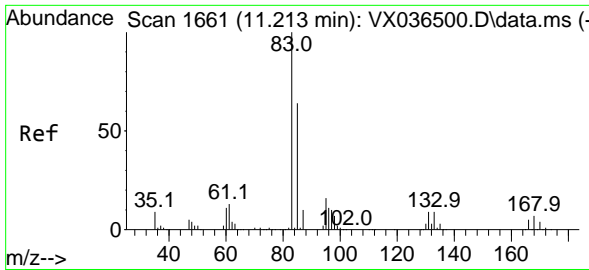
Tgt Ion:106 Resp: 8560
 Ion Ratio Lower Upper
 106 100
 91 207.7 147.8 274.4



#55
 Styrene
 Concen: 2.481 ug/L
 RT: 10.659 min Scan# 1570
 Delta R.T. 0.006 min
 Lab File: VX036507.D
 Acq: 12 Jul 2023 13:29

Tgt Ion:104 Resp: 14545
 Ion Ratio Lower Upper
 104 100
 78 46.9 33.5 62.3



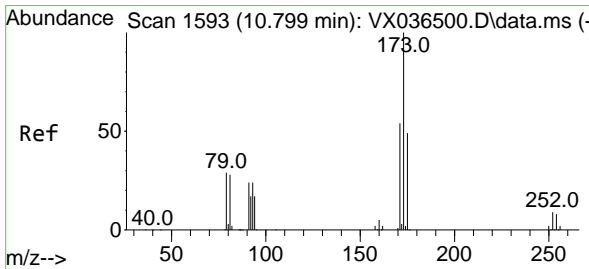
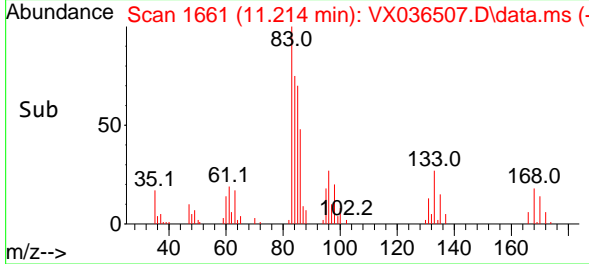
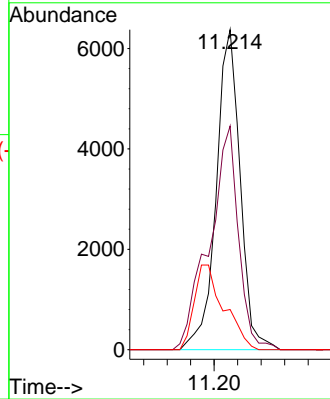
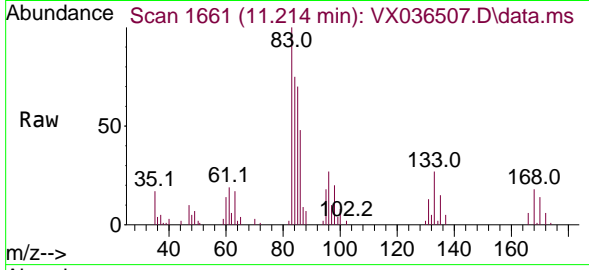


#57
 1,1,2,2-Tetrachloroethane
 Concen: 2.797 ug/L
 RT: 11.214 min Scan# 1661
 Delta R.T. 0.000 min
 Lab File: VX036507.D
 Acq: 12 Jul 2023 13:29

Instrument : MSVOA_X
 ClientSampleId : VSTD100647

Tgt Ion: 83 Resp: 9014

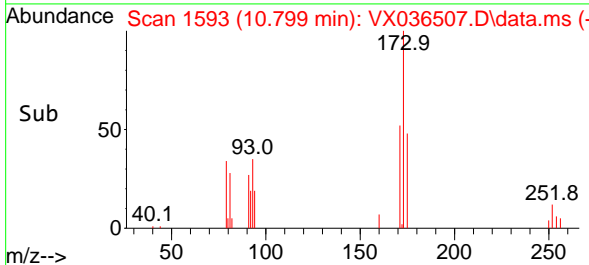
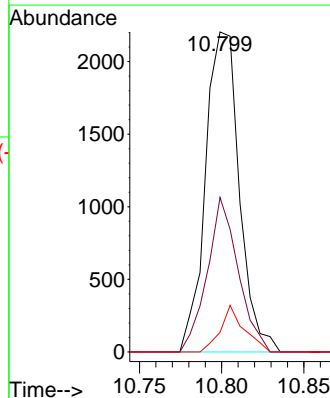
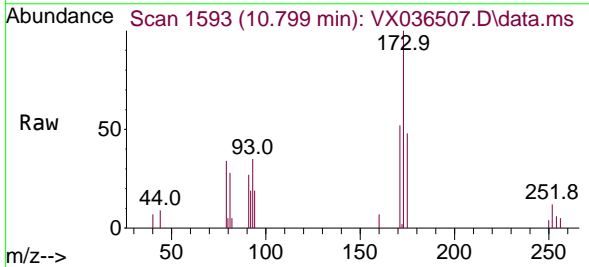
Ion	Ratio	Lower	Upper
83	100		
85	69.9	44.9	83.3
131	12.5	7.4	11.0

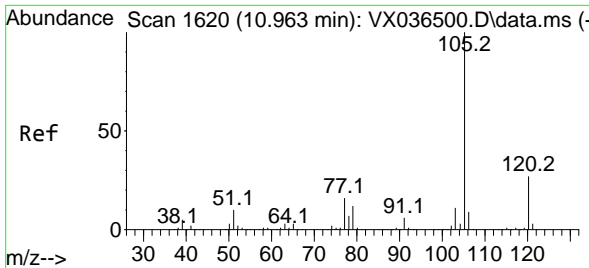


#59
 Bromoform
 Concen: 2.175 ug/L
 RT: 10.799 min Scan# 1593
 Delta R.T. 0.000 min
 Lab File: VX036507.D
 Acq: 12 Jul 2023 13:29

Tgt Ion: 173 Resp: 3159

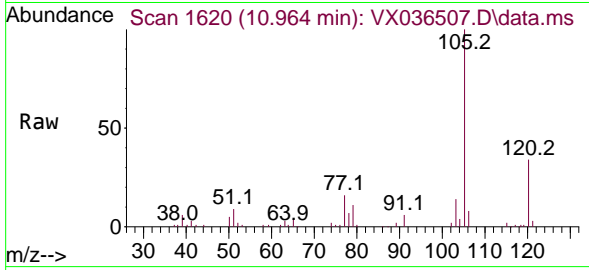
Ion	Ratio	Lower	Upper
173	100		
175	44.1	39.5	59.3
254	10.2	7.0	10.4





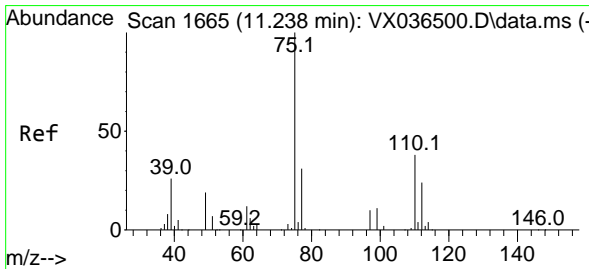
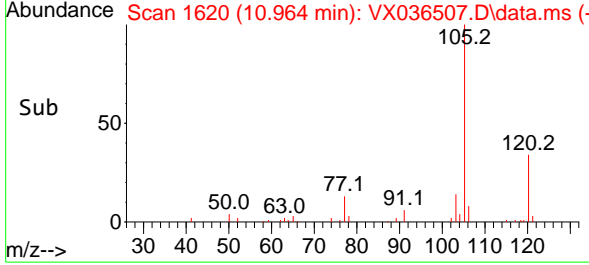
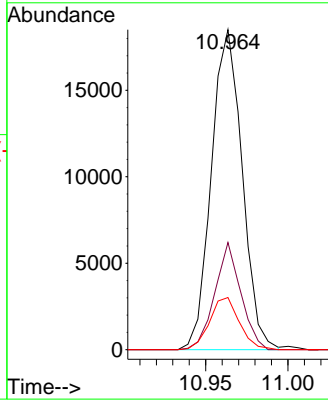
#60
 Isopropylbenzene
 Concen: 2.694 ug/L
 RT: 10.964 min Scan# 1620
 Delta R.T. 0.000 min
 Lab File: VX036507.D
 Acq: 12 Jul 2023 13:29

Instrument : MSVOA_X
 ClientSampleId : VSTD100647

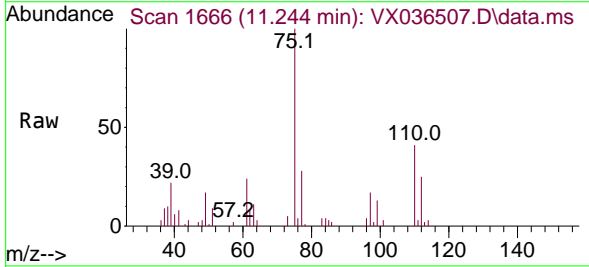


Tgt Ion: 105 Resp: 24062

Ion	Ratio	Lower	Upper
105	100		
120	28.4	21.5	32.3
77	15.8	12.7	19.1

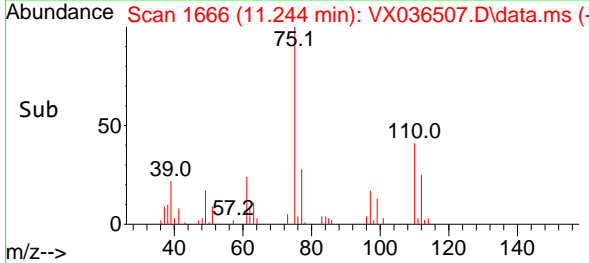
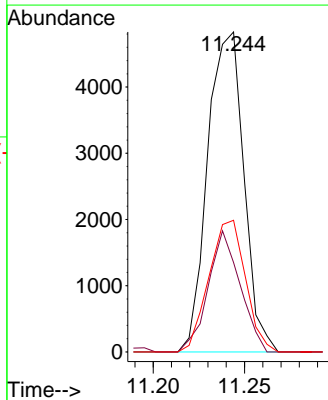


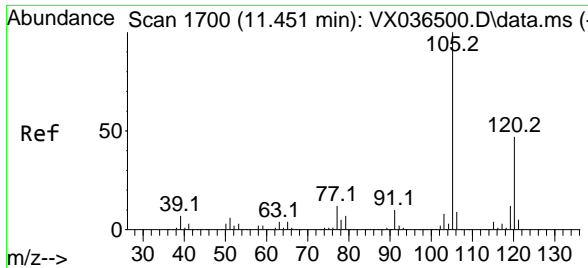
#61
 1,2,3-Trichloropropane
 Concen: 2.653 ug/L
 RT: 11.244 min Scan# 1666
 Delta R.T. 0.006 min
 Lab File: VX036507.D
 Acq: 12 Jul 2023 13:29



Tgt Ion: 75 Resp: 6655

Ion	Ratio	Lower	Upper
75	100		
77	33.4	25.4	38.0
110	41.6	29.9	44.9

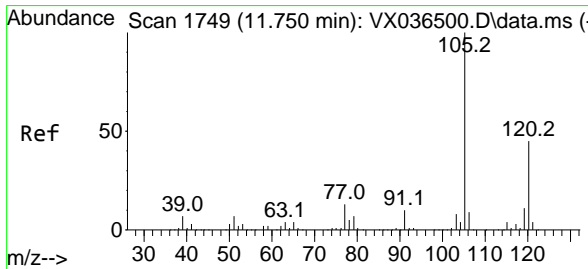
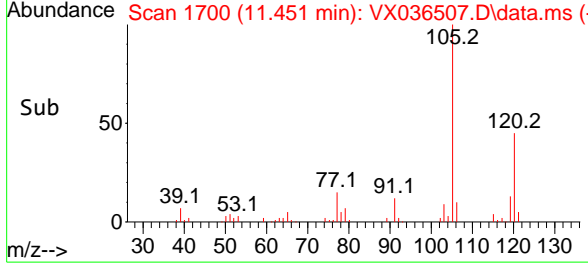
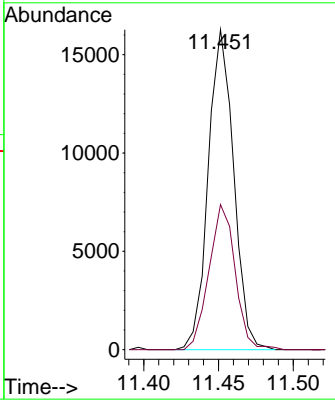
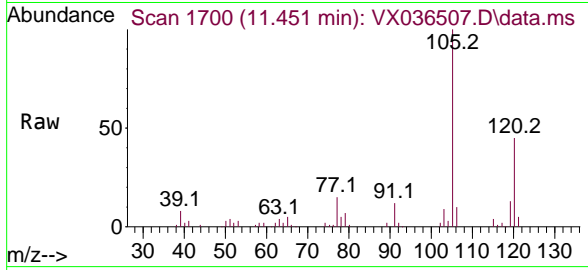




#62
 1,3,5-Trimethylbenzene
 Concen: 2.576 ug/L
 RT: 11.451 min Scan# 1700
 Delta R.T. 0.000 min
 Lab File: VX036507.D
 Acq: 12 Jul 2023 13:29

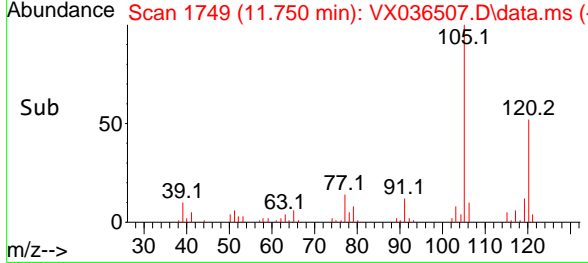
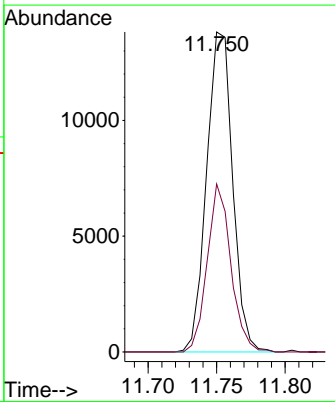
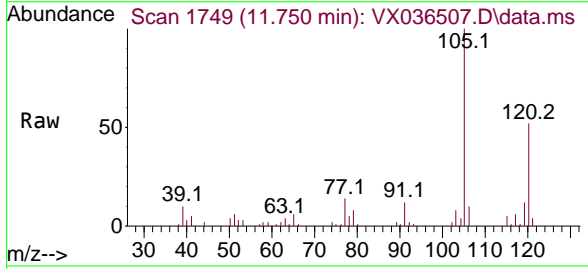
Instrument : MSVOA_X
 ClientSampleId : VSTD100647

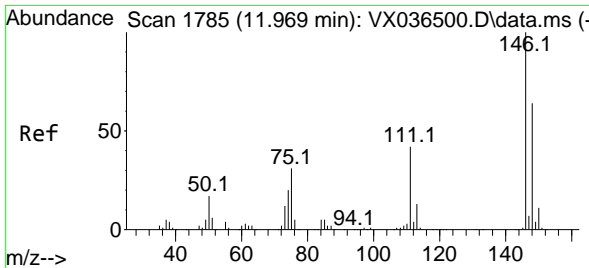
Tgt Ion:105 Resp: 19231
 Ion Ratio Lower Upper
 105 100
 120 46.2 38.3 57.5



#63
 1,2,4-Trimethylbenzene
 Concen: 2.442 ug/L
 RT: 11.750 min Scan# 1749
 Delta R.T. 0.000 min
 Lab File: VX036507.D
 Acq: 12 Jul 2023 13:29

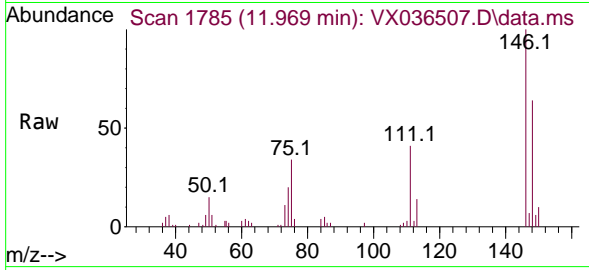
Tgt Ion:105 Resp: 18284
 Ion Ratio Lower Upper
 105 100
 120 47.5 36.7 55.1



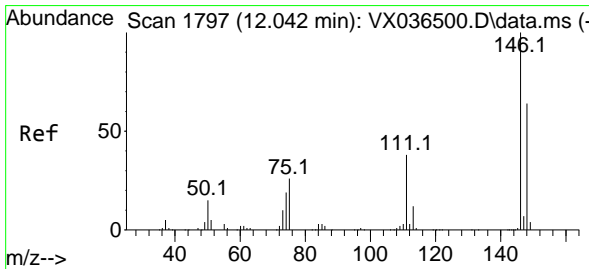
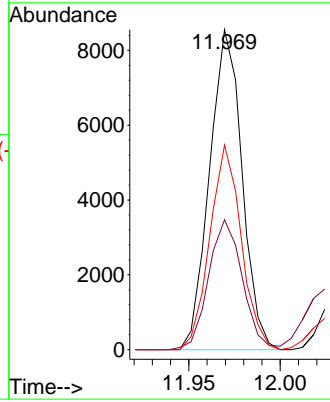
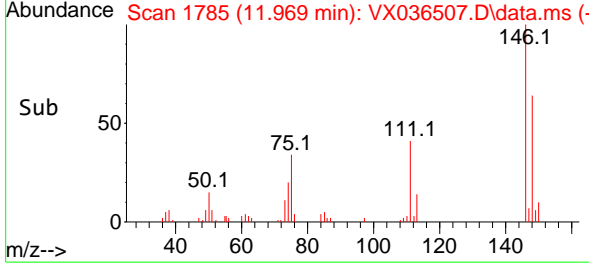


#64
 1,3-Dichlorobenzene
 Concen: 2.648 ug/L
 RT: 11.969 min Scan# 1785
 Delta R.T. 0.000 min
 Lab File: VX036507.D
 Acq: 12 Jul 2023 13:29

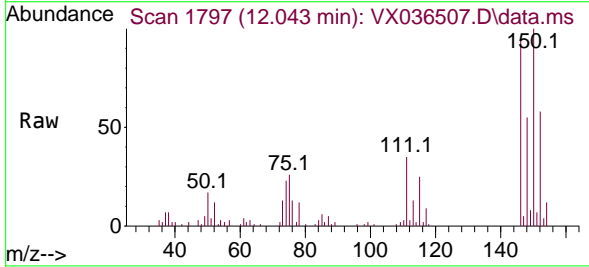
Instrument :
 MSVOA_X
 ClientSampleId :
 VSTD100647



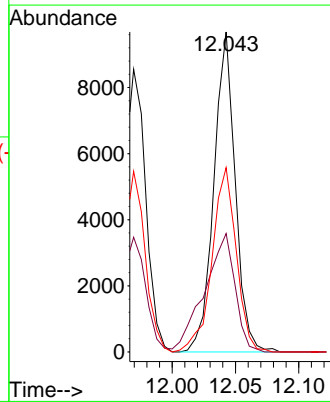
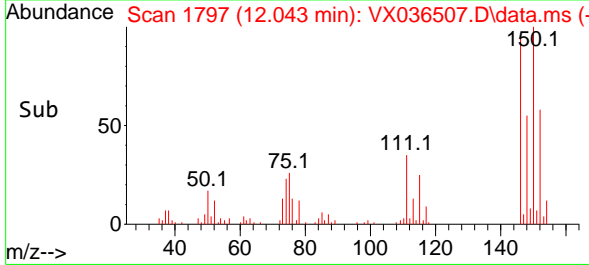
Tgt Ion:146 Resp: 10582
 Ion Ratio Lower Upper
 146 100
 111 40.6 29.5 54.7
 148 63.9 44.9 83.5

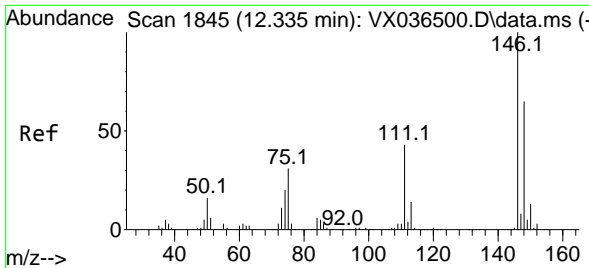


#65
 1,4-Dichlorobenzene
 Concen: 2.820 ug/L
 RT: 12.043 min Scan# 1797
 Delta R.T. 0.000 min
 Lab File: VX036507.D
 Acq: 12 Jul 2023 13:29



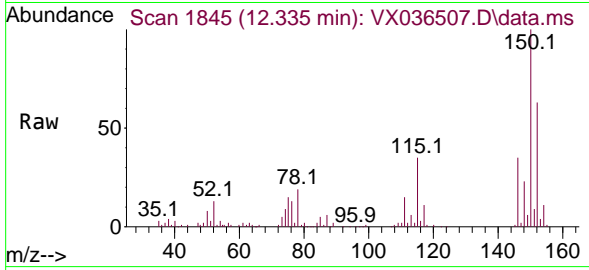
Tgt Ion:146 Resp: 11379
 Ion Ratio Lower Upper
 146 100
 111 37.0 27.1 50.3
 148 57.6 45.2 84.0



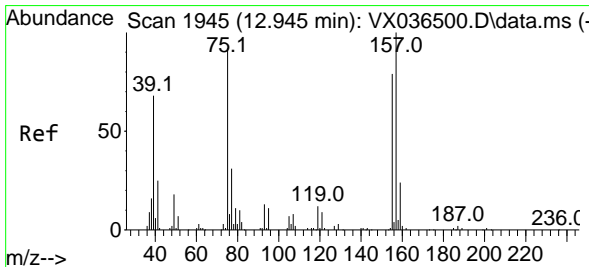
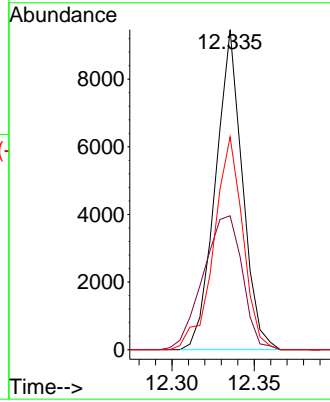
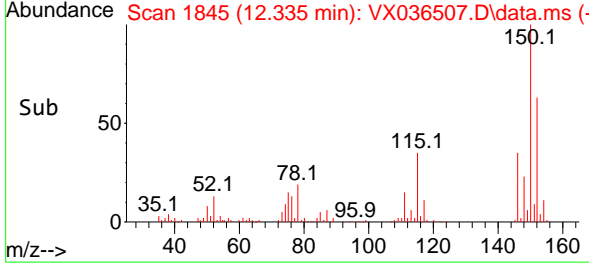


#67
 1,2-Dichlorobenzene
 Concen: 2.716 ug/L
 RT: 12.335 min Scan# 1845
 Delta R.T. 0.000 min
 Lab File: VX036507.D
 Acq: 12 Jul 2023 13:29

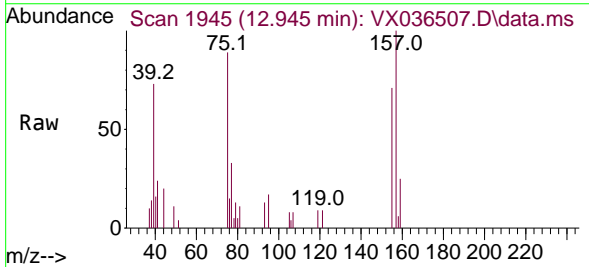
Instrument : MSVOA_X
 ClientSampleId : VSTD100647



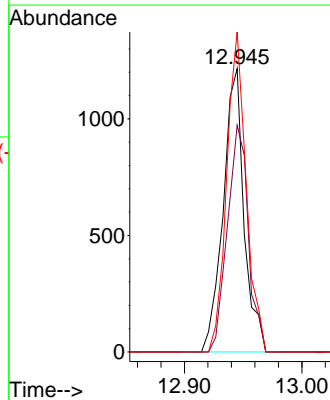
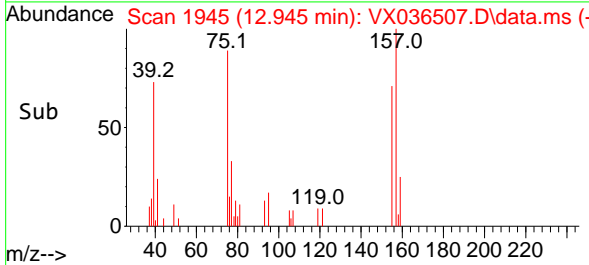
Tgt Ion:146 Resp: 10769
 Ion Ratio Lower Upper
 146 100
 111 41.8 34.4 51.6
 148 66.5 51.9 77.9

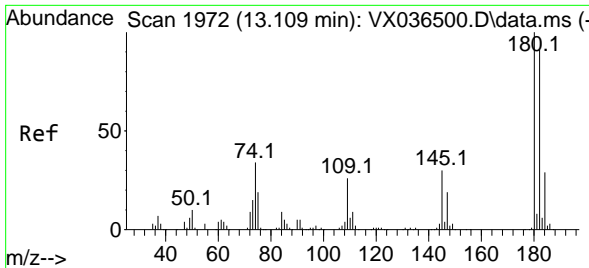


#68
 1,2-Dibromo-3-chloropropane
 Concen: 2.250 ug/L
 RT: 12.945 min Scan# 1945
 Delta R.T. 0.000 min
 Lab File: VX036507.D
 Acq: 12 Jul 2023 13:29



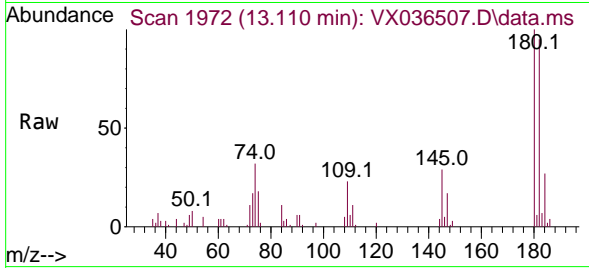
Tgt Ion: 75 Resp: 1504
 Ion Ratio Lower Upper
 75 100
 155 80.0 68.4 102.6
 157 112.9 86.8 130.2



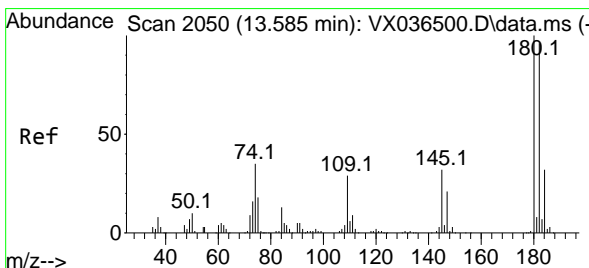
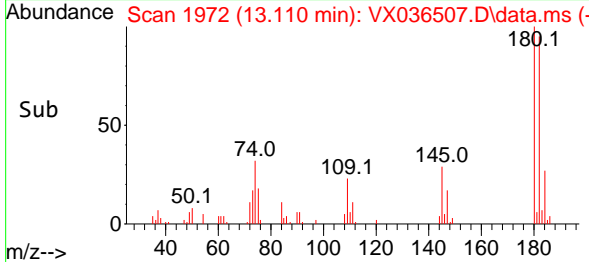
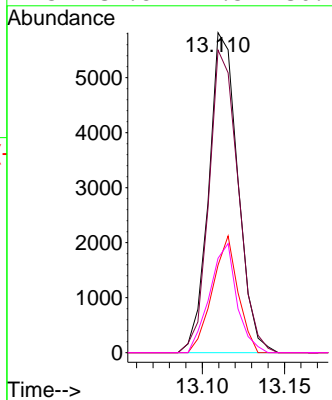


#69
 1,3,5-Trichlorobenzene
 Concen: 2.699 ug/L
 RT: 13.110 min Scan# 1972
 Delta R.T. 0.000 min
 Lab File: VX036507.D
 Acq: 12 Jul 2023 13:29

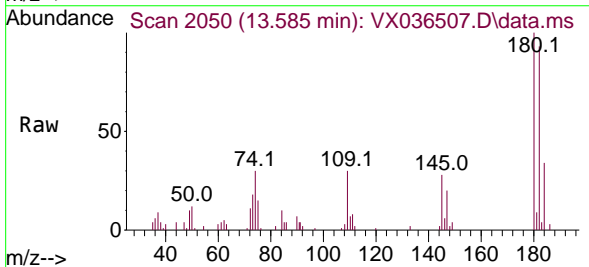
Instrument :
 MSVOA_X
 ClientSampleId :
 VSTD100647



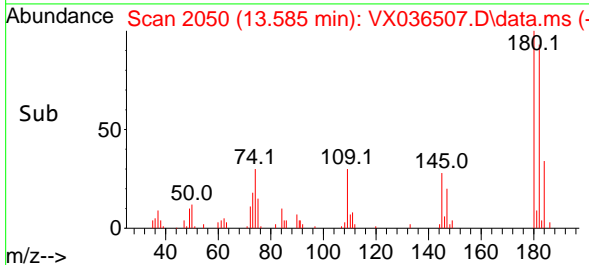
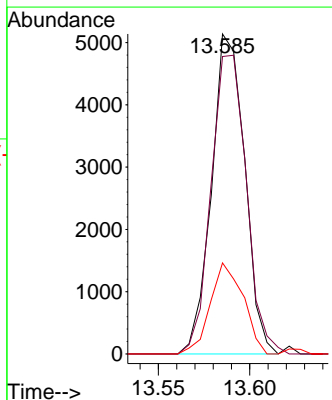
Tgt Ion:180 Resp: 7156
 Ion Ratio Lower Upper
 180 100
 182 94.6 75.2 112.8
 184 31.9 23.9 35.9
 145 31.8 24.5 36.7

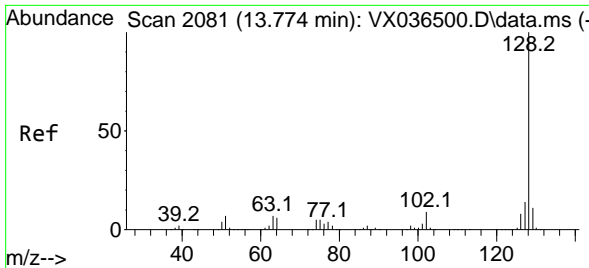


#70
 1,2,4-trichlorobenzene
 Concen: 2.595 ug/L
 RT: 13.585 min Scan# 2050
 Delta R.T. 0.000 min
 Lab File: VX036507.D
 Acq: 12 Jul 2023 13:29



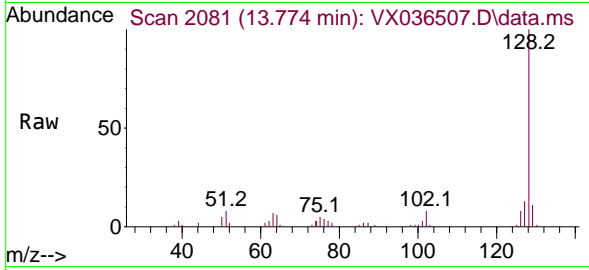
Tgt Ion:180 Resp: 6490
 Ion Ratio Lower Upper
 180 100
 182 99.2 74.7 112.1
 145 28.3 25.3 37.9



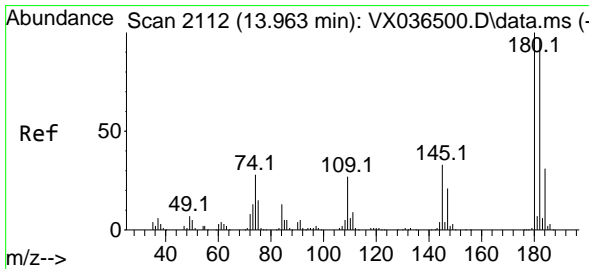
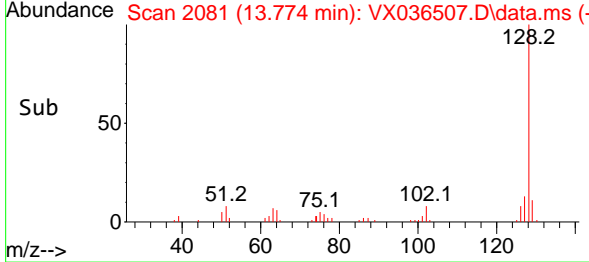
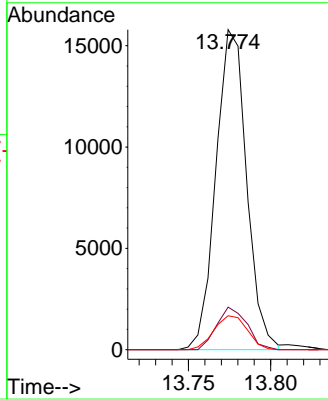


#71
 Naphthalene
 Concen: 2.405 ug/L
 RT: 13.774 min Scan# 2081
 Delta R.T. 0.000 min
 Lab File: VX036507.D
 Acq: 12 Jul 2023 13:29

Instrument : MSVOA_X
 ClientSampleId : VSTD100647



Tgt Ion:128 Resp: 20524
 Ion Ratio Lower Upper
 128 100
 127 13.1 10.6 16.0
 129 11.5 8.6 13.0



#72
 1,2,3-Trichlorobenzene
 Concen: 2.750 ug/L
 RT: 13.963 min Scan# 2112
 Delta R.T. 0.000 min
 Lab File: VX036507.D
 Acq: 12 Jul 2023 13:29

Tgt Ion:180 Resp: 6702
 Ion Ratio Lower Upper
 180 100
 182 89.5 78.6 117.8
 145 34.2 27.5 41.3

