

Data Path : Z:\VOASRV\HPCHEM1\MSVOA X\DATA\VX071318\
 Data File : VX003371.D
 Acq On : 13 Jul 2018 19:48
 Operator : JC/MD
 Sample : VX0713WBL01
 Misc : 5.0mL/MSVOA X/WATER
 ALS Vial : 15 Sample Multiplier: 1

Instrument :
 MSVOA_X
 ClientSampleId :
 VX0713WBL01

Integration Parameters: RTEINT.P
 Integrator: RTE
 Smoothing : ON Filtering: 5
 Sampling : 1 Min Area: 3 % of largest Peak
 Start Thrs: 0.2 Max Peaks: 100
 Stop Thrs : 0 Peak Location: TOP

If leading or trailing edge < 100 prefer < Baseline drop else tangent >
 Peak separation: 5

Method : Z:\VOASRV\HPCHEM1\MSVOA_X\METHOD\82X071318W.M
 Title : SW846 8260

Signal : TIC

peak #	R.T. min	first scan	max scan	last scan	PK TY	peak height	corr. area	corr. % max.	% of total
1	1.075	75	80	94	rBV	792237	1080314	72.69%	12.721%
2	4.617	650	661	673	rBV2	4370	16883	1.14%	0.199%
3	4.782	679	688	700	rVB2	5243	17197	1.16%	0.203%
4	5.507	795	807	820	rBV2	181305	512018	34.45%	6.029%
5	5.665	823	833	850	rVB	269498	747890	50.32%	8.807%
6	6.074	888	900	916	rBV	187445	491930	33.10%	5.793%
7	6.866	1019	1030	1053	rBV	391591	936380	63.00%	11.026%
8	8.720	1326	1334	1355	rBV	963208	1486265	100.00%	17.501%
9	10.116	1557	1563	1575	rBV	817522	1076928	72.46%	12.681%
10	11.140	1725	1731	1744	rBV	775111	961035	64.66%	11.317%
11	12.079	1880	1885	1897	rVB	933257	1165406	78.41%	13.723%

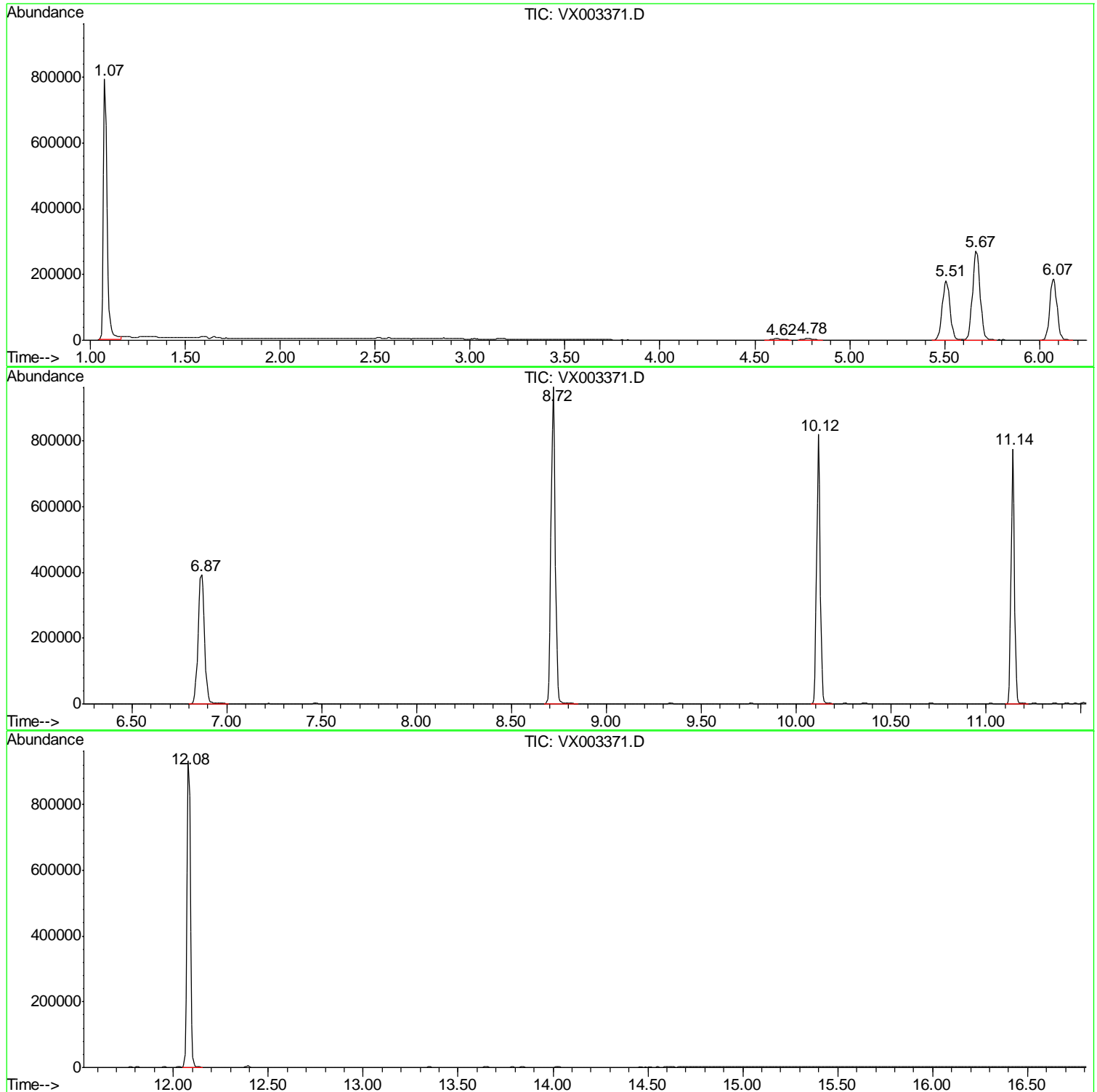
Sum of corrected areas: 8492246

Data Path : Z:\VOASRV\HPCHEM1\MSVOA X\DATA\VX071318\
Data File : VX003371.D
Acq On : 13 Jul 2018 19:48
Operator : JC/MD
Sample : VX0713WBL01
Misc : 5.0mL/MSVOA X/WATER
ALS Vial : 15 Sample Multiplier: 1

Instrument :
MSVOA_X
ClientSampled :
VX0713WBL01

Quant Method : Z:\VOASRV\HPCHEM1\MSVOA_X\METHOD\82X071318W.M
Quant Title : SW846 8260

TIC Library : C:\DATABASE\NIST11.L
TIC Integration Parameters: LSCINT.P



Data Path : Z:\VOASRV\HPCHEM1\MSVOA_X\DATA\VX071318\
Data File : VX003371.D
Acq On : 13 Jul 2018 19:48
Operator : JC/MD
Sample : VX0713WBL01
Misc : 5.0mL/MSVOA_X/WATER
ALS Vial : 15 Sample Multiplier: 1

Instrument :
MSVOA_X
ClientSampleId :
VX0713WBL01

Quant Method : Z:\VOASRV\HPCHEM1\MSVOA_X\METHOD\82X071318W.M
Quant Title : SW846 8260

TIC Library : C:\DATABASE\NIST11.L
TIC Integration Parameters: LSCINT.P

No Library Search Compounds Detected

Data Path : Z:\VOASRV\HPCHEM1\MSVOA_X\DATA\VX071318\
Data File : VX003371.D
Acq On : 13 Jul 2018 19:48
Operator : JC/MD
Sample : VX0713WBL01
Misc : 5.0mL/MSVOA_X/WATER
ALS Vial : 15 Sample Multiplier: 1

Instrument :
MSVOA_X
ClientSampleId :
VX0713WBL01

Quant Method : Z:\VOASRV\HPCHEM1\MSVOA_X\METHOD\82X071318W.M
Quant Title : SW846 8260

TIC Library : C:\DATABASE\NIST11.L
TIC Integration Parameters: LSCINT.P

TIC Top Hit name	RT	EstConc	Units	Response	--Internal Standard--			
					#	RT	Resp	Conc
