

Data Path : Z:\voasrv\HPCHEM1\MSVOA_X\Data\VX071421\
 Data File : VX023281.D
 Acq On : 14 Jul 2021 15:58
 Operator : JC/MD
 Sample : PB137668ZHE#06
 Misc : 5.0mL/MSVOA_X/WATER
 ALS Vial : 14 Sample Multiplier: 1

Instrument :
 MSVOA_X
 ClientSampled :

Quant Time: Jul 15 04:28:16 2021
 Quant Method : Z:\voasrv\HPCHEM1\MSVOA_X\Method\82X070221W.M
 Quant Title : SW846 8260
 QLast Update : Fri Jul 02 14:29:42 2021
 Response via : Initial Calibration

Compound	R.T.	QIon	Response	Conc	Units	Dev(Min)

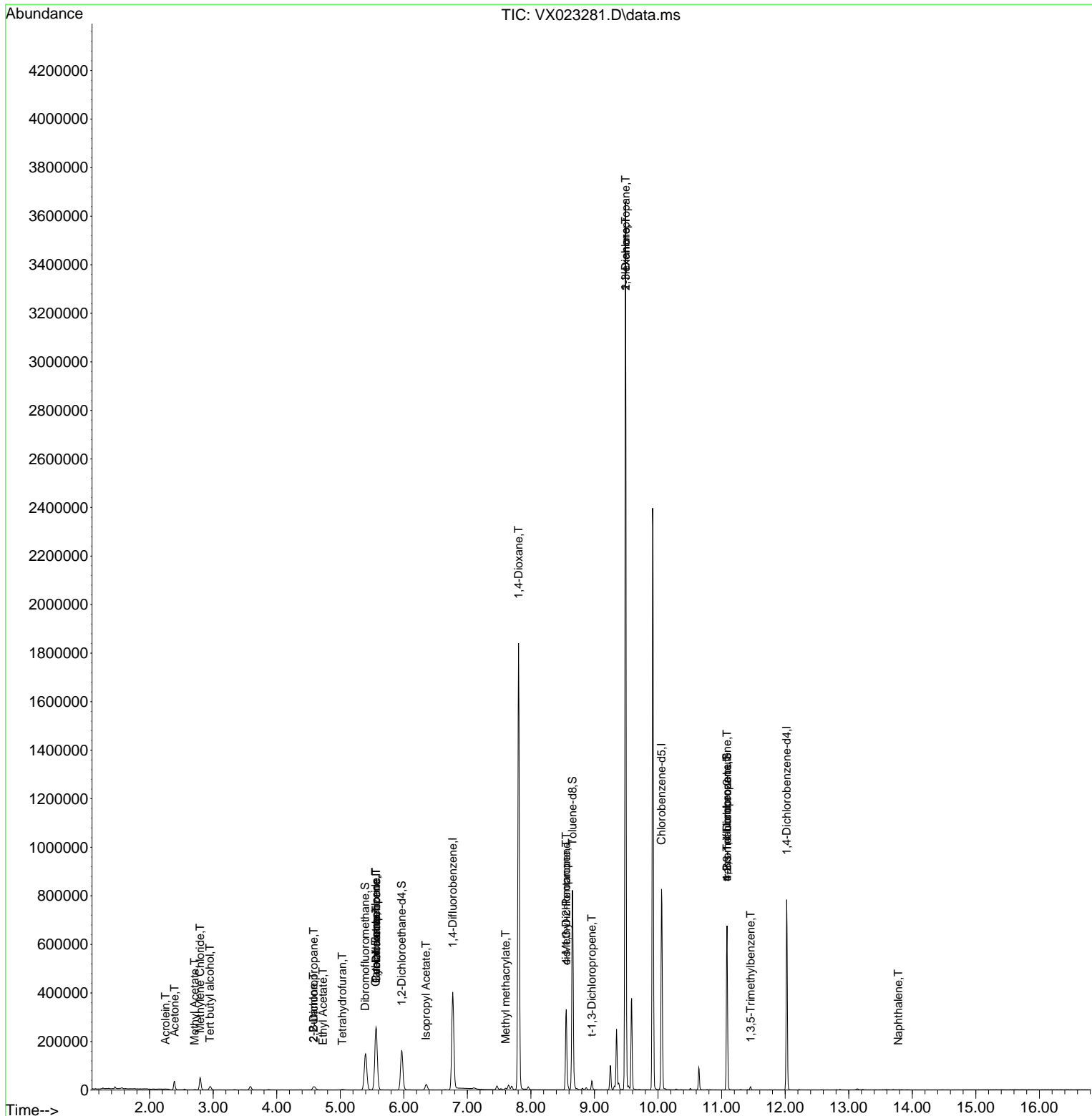
Internal Standards						
1) Pentafluorobenzene	5.562	168	241713	50.000	ug/l	0.00
34) 1,4-Difluorobenzene	6.769	114	399866	50.000	ug/l	0.00
63) Chlorobenzene-d5	10.055	117	373839	50.000	ug/l	0.00
72) 1,4-Dichlorobenzene-d4	12.024	152	162396	50.000	ug/l	0.00
System Monitoring Compounds						
33) 1,2-Dichloroethane-d4	5.964	65	166217	51.165	ug/l	0.00
Spiked Amount	50.000	Range 78 - 117	Recovery	=	102.340%	
35) Dibromofluoromethane	5.391	113	129101	49.997	ug/l	0.00
Spiked Amount	50.000	Range 75 - 124	Recovery	=	100.000%	
50) Toluene-d8	8.653	98	479922	49.825	ug/l	0.00
Spiked Amount	50.000	Range 92 - 112	Recovery	=	99.660%	
62) 4-Bromofluorobenzene	11.085	95	178650	48.043	ug/l	0.00
Spiked Amount	50.000	Range 83 - 123	Recovery	=	96.080%	
Target Compounds						
						Qvalue
5) Bromomethane	1.618	94	228	Below Cal		94
11) Tert butyl alcohol	2.947	59	8648	12.654	ug/l #	76
13) Acrolein	2.252	56	276	0.606	ug/l	85
16) Acetone	2.392	43	36981	28.773	ug/l	92
18) Methyl Acetate	2.709	43	2054	0.658	ug/l #	89
20) Methylene Chloride	2.794	84	23427	8.466	ug/l	95
25) 2-Butanone	4.574	43	6812	3.515	ug/l #	83
26) 2,2-Dichloropropane	4.580	77	1033	0.276	ug/l #	52
29) Tetrahydrofuran	5.032	42	2452	1.968	ug/l #	84
31) Cyclohexane	5.562	56	5252	1.350	ug/l #	1
36) 1,1-Dichloropropene	5.562	75	19480	5.465	ug/l #	49
37) Ethyl Acetate	4.727	43	811	0.209	ug/l #	64
38) Carbon Tetrachloride	5.556	117	25314	6.803	ug/l #	16
43) Isopropyl Acetate	6.348	43	31163	4.818	ug/l	94
48) Methyl methacrylate	7.604	41	7841	2.470	ug/l #	10
49) 1,4-Dioxane	7.806	88	279	3.906	ug/l #	1
51) 4-Methyl-2-Pentanone	8.555	43	115396	28.791	ug/l #	45
53) t-1,3-Dichloropropene	8.958	75	81	2.754	ug/l #	44
54) cis-1,3-Dichloropropene	8.555	75	52979	13.102	ug/l #	63
57) 1,3-Dichloropropene	9.488	76	30524	6.566	ug/l #	43
59) 2-Hexanone	9.488	43	412177	134.028	ug/l #	43
76) 1,2,3-Trichloropropane	11.085	75	90896	27.814	ug/l #	38
80) 1,3,5-Trimethylbenzene	11.457	105	5839	0.593	ug/l	100
81) trans-1,4-Dichloro-2-b...	11.085	75	90896	75.029	ug/l #	12
95) Naphthalene	13.780	128	256	1.296	ug/l #	77

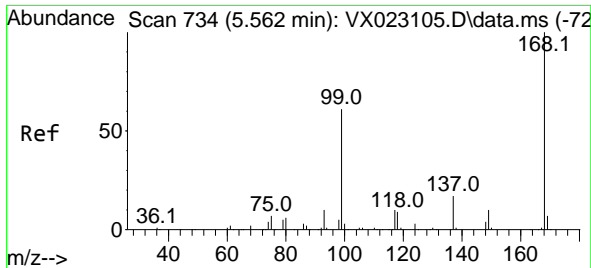
(#) = qualifier out of range (m) = manual integration (+) = signals summed

Data Path : Z:\voasrv\HPCHEM1\MSVOA_X\Data\VX071421\
 Data File : VX023281.D
 Acq On : 14 Jul 2021 15:58
 Operator : JC/MD
 Sample : PB137668ZHE#06
 Misc : 5.0mL/MSVOA_X/WATER
 ALS Vial : 14 Sample Multiplier: 1

Instrument :
 MSVOA_X
 ClientSampleId :

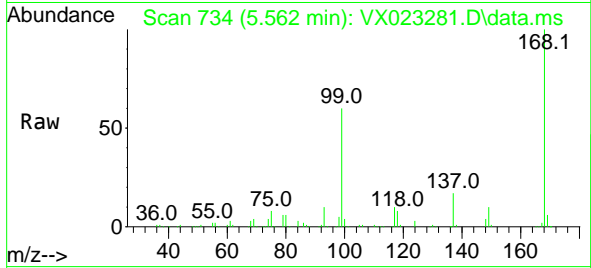
Quant Time: Jul 15 04:28:16 2021
 Quant Method : Z:\voasrv\HPCHEM1\MSVOA_X\Method\82X070221W.M
 Quant Title : SW846 8260
 QLast Update : Fri Jul 02 14:29:42 2021
 Response via : Initial Calibration



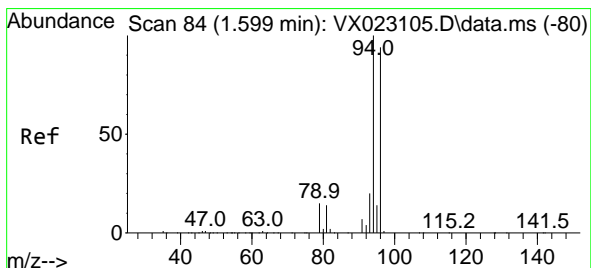
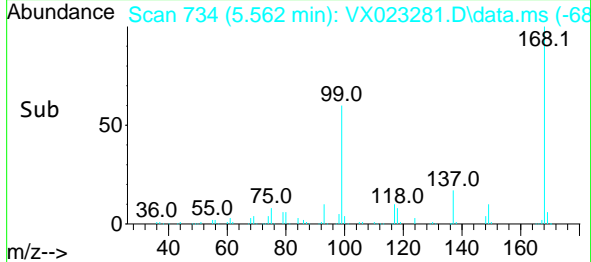
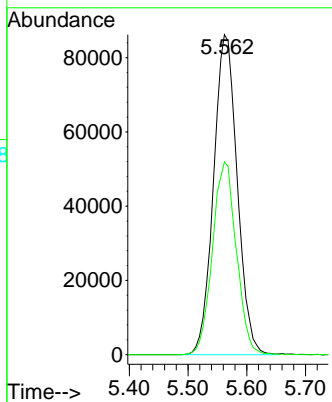


#1
 Pentafluorobenzene
 Concen: 50.000 ug/l
 RT: 5.562 min Scan# 734
 Delta R.T. 0.000 min
 Lab File: VX023281.D
 Acq: 14 Jul 2021 15:58

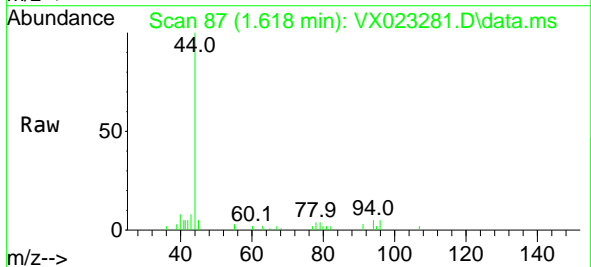
Instrument :
 MSVOA_X
 ClientSampled :



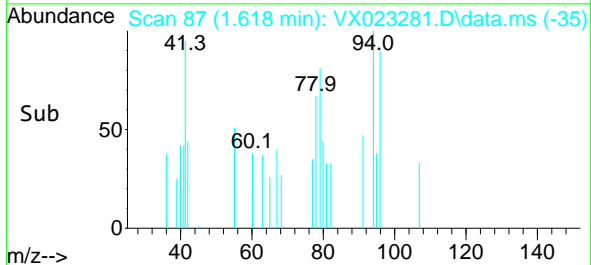
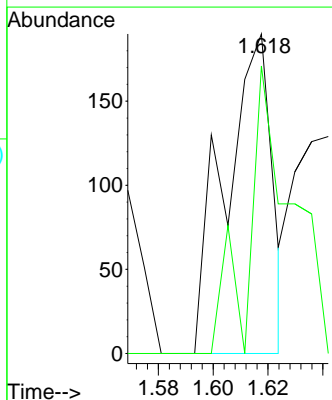
Tgt Ion:168 Resp: 241713
 Ion Ratio Lower Upper
 168 100
 99 60.2 45.8 68.6

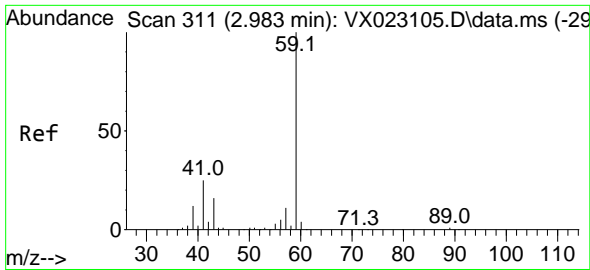


#5
 Bromomethane
 Concen: Below Cal
 RT: 1.618 min Scan# 87
 Delta R.T. 0.019 min
 Lab File: VX023281.D
 Acq: 14 Jul 2021 15:58



Tgt Ion: 94 Resp: 228
 Ion Ratio Lower Upper
 94 100
 96 90.0 76.4 114.6

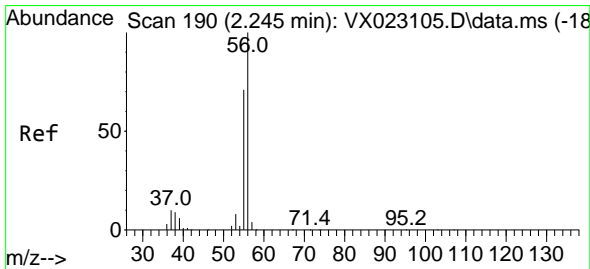
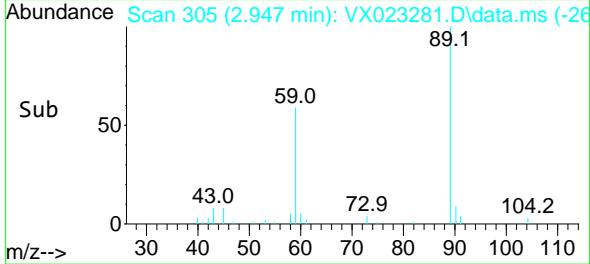
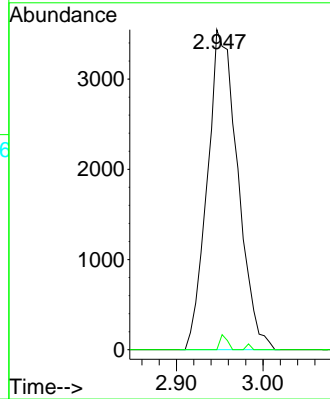
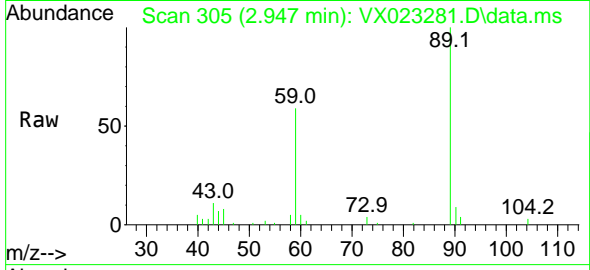




#11
 Tert butyl alcohol
 Concen: 12.654 ug/l
 RT: 2.947 min Scan# 305
 Delta R.T. -0.036 min
 Lab File: VX023281.D
 Acq: 14 Jul 2021 15:58

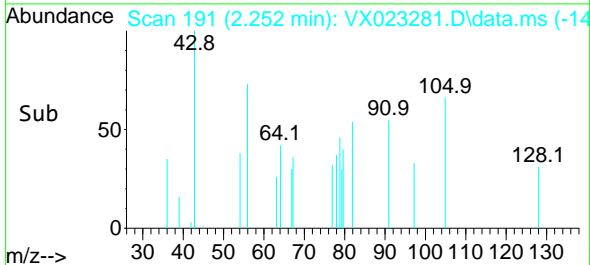
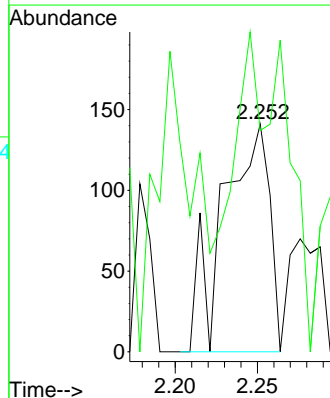
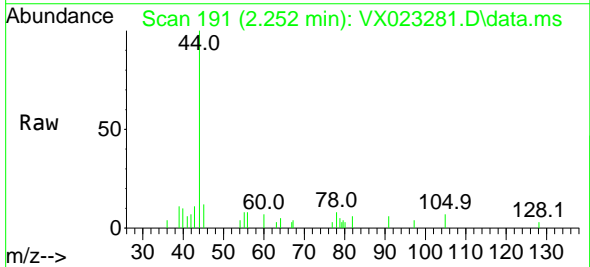
Instrument :
 MSVOA_X
 ClientSampled :

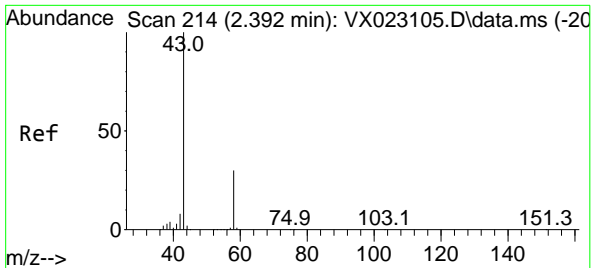
Tgt Ion: 59 Resp: 8648
 Ion Ratio Lower Upper
 59 100
 57 1.1 7.8 11.8#



#13
 Acrolein
 Concen: 0.606 ug/l
 RT: 2.252 min Scan# 191
 Delta R.T. 0.007 min
 Lab File: VX023281.D
 Acq: 14 Jul 2021 15:58

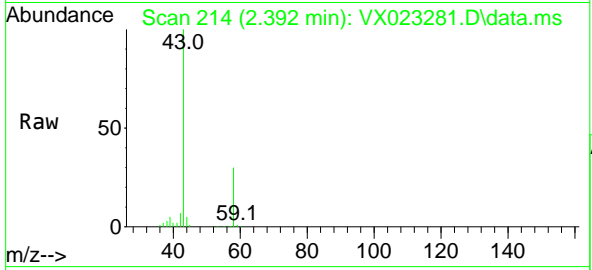
Tgt Ion: 56 Resp: 276
 Ion Ratio Lower Upper
 56 100
 55 58.0 56.4 84.6



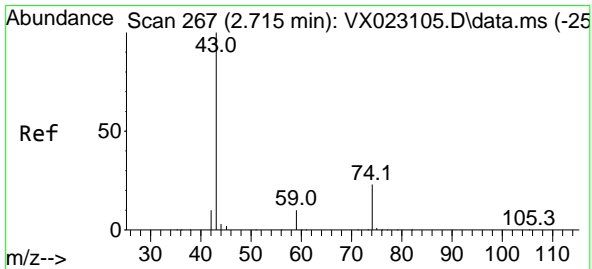
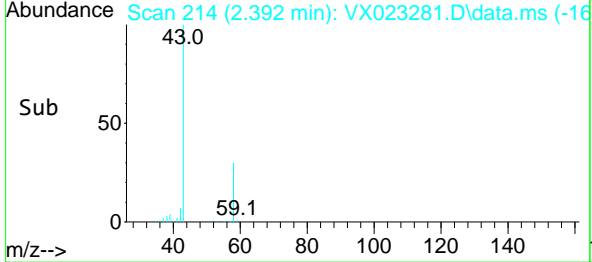
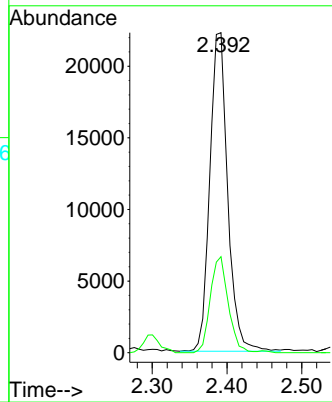


#16
 Acetone
 Concen: 28.773 ug/l
 RT: 2.392 min Scan# 214
 Delta R.T. -0.000 min
 Lab File: VX023281.D
 Acq: 14 Jul 2021 15:58

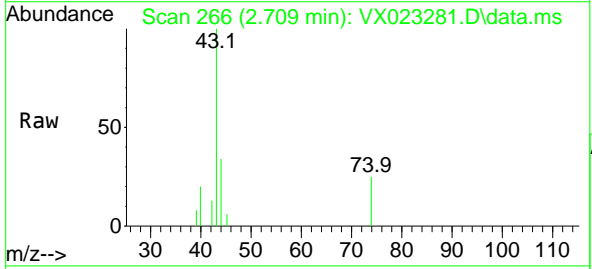
Instrument :
 MSVOA_X
 ClientSampled :



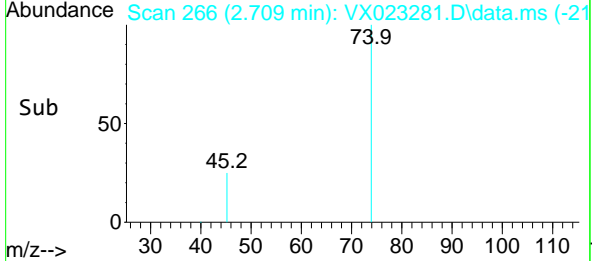
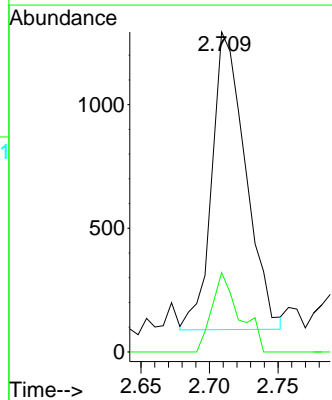
Tgt Ion: 43 Resp: 36981
 Ion Ratio Lower Upper
 43 100
 58 30.1 27.8 41.8

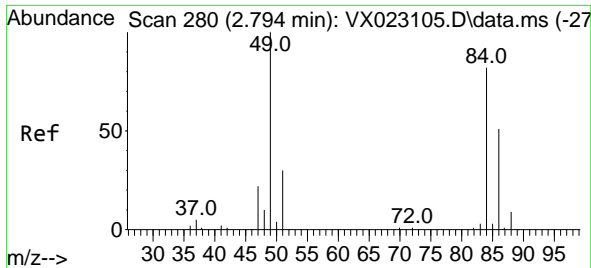


#18
 Methyl Acetate
 Concen: 0.658 ug/l
 RT: 2.709 min Scan# 266
 Delta R.T. -0.006 min
 Lab File: VX023281.D
 Acq: 14 Jul 2021 15:58



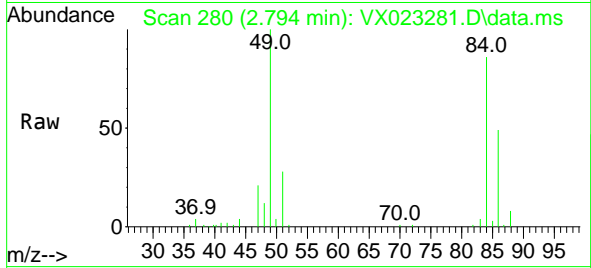
Tgt Ion: 43 Resp: 2054
 Ion Ratio Lower Upper
 43 100
 74 21.9 21.9 32.9#



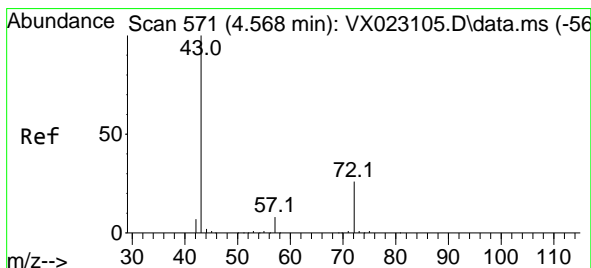
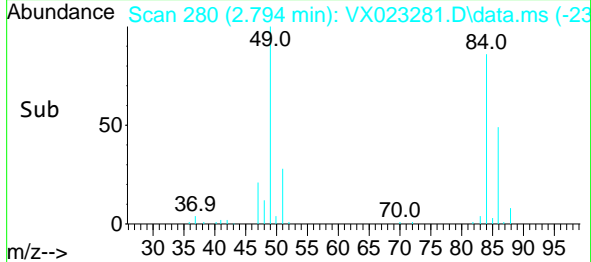
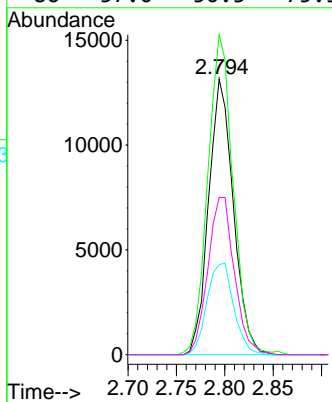


#20
 Methylene Chloride
 Concen: 8.466 ug/l
 RT: 2.794 min Scan# 280
 Delta R.T. 0.000 min
 Lab File: VX023281.D
 Acq: 14 Jul 2021 15:58

Instrument :
 MSVOA_X
 ClientSampled :

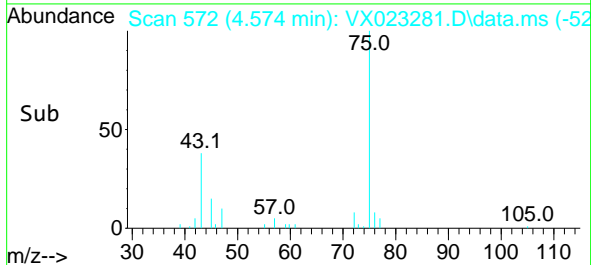
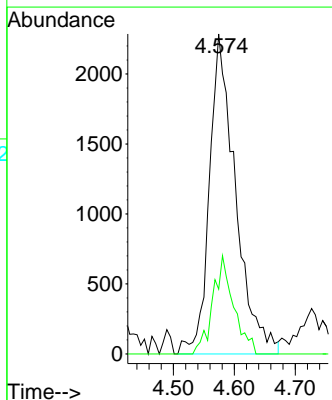
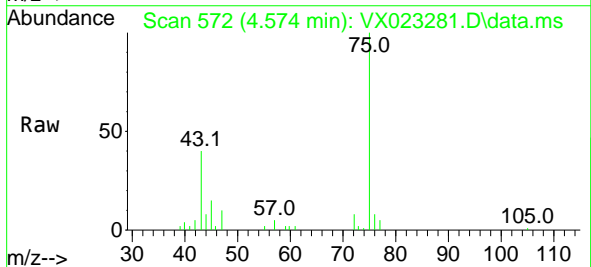


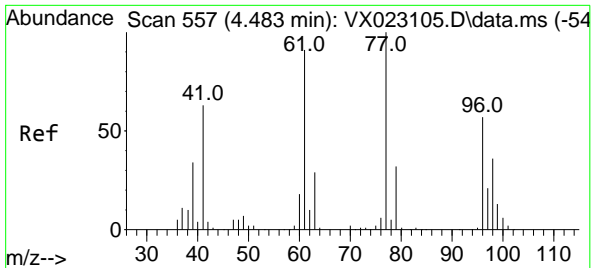
Tgt Ion	84	Resp	23427
Ion	Ratio	Lower	Upper
84	100		
49	116.0	88.6	132.8
51	32.7	27.0	40.6
86	57.0	50.3	75.5



#25
 2-Butanone
 Concen: 3.515 ug/l
 RT: 4.574 min Scan# 572
 Delta R.T. 0.006 min
 Lab File: VX023281.D
 Acq: 14 Jul 2021 15:58

Tgt Ion	43	Resp	6812
Ion	Ratio	Lower	Upper
43	100		
72	20.3	23.7	35.5#

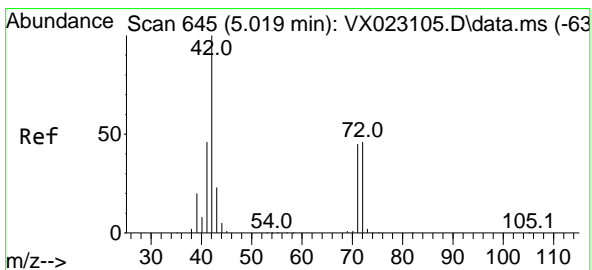
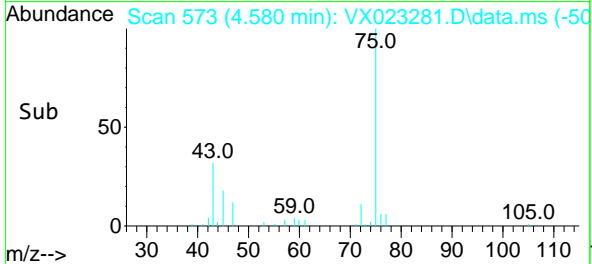
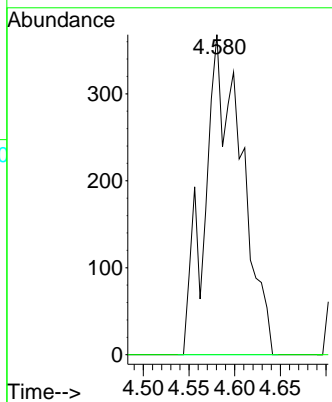
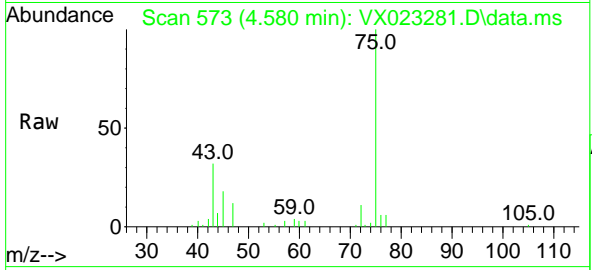




#26
 2,2-Dichloropropane
 Concen: 0.276 ug/l
 RT: 4.580 min Scan# 573
 Delta R.T. 0.097 min
 Lab File: VX023281.D
 Acq: 14 Jul 2021 15:58

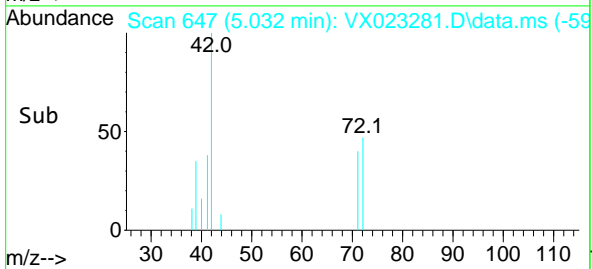
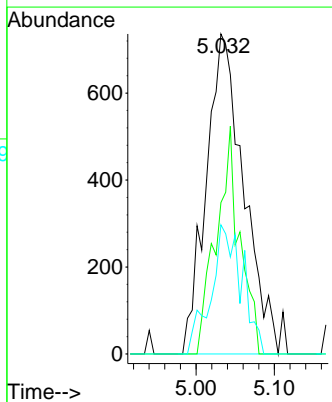
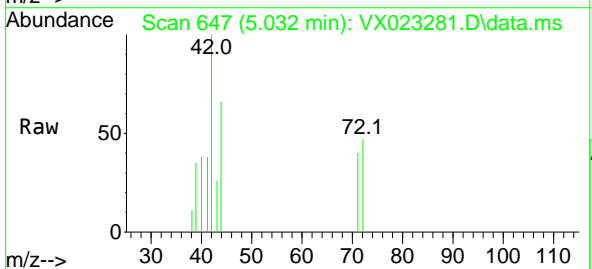
Instrument :
 MSVOA_X
 ClientSampled :

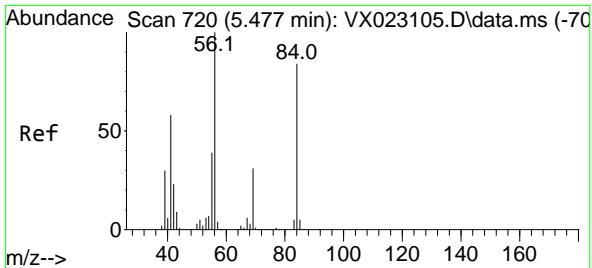
Tgt Ion: 77 Resp: 1033
 Ion Ratio Lower Upper
 77 100
 97 0.0 11.7 35.1#



#29
 Tetrahydrofuran
 Concen: 1.968 ug/l
 RT: 5.032 min Scan# 647
 Delta R.T. 0.013 min
 Lab File: VX023281.D
 Acq: 14 Jul 2021 15:58

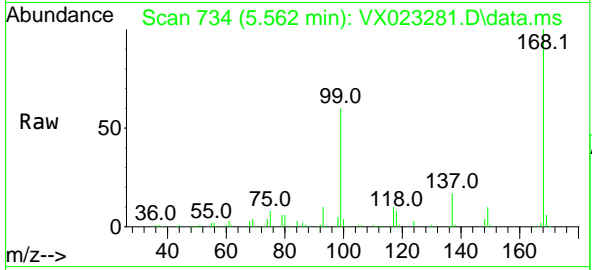
Tgt Ion: 42 Resp: 2452
 Ion Ratio Lower Upper
 42 100
 72 44.5 41.7 62.5
 71 33.6 38.4 57.6#





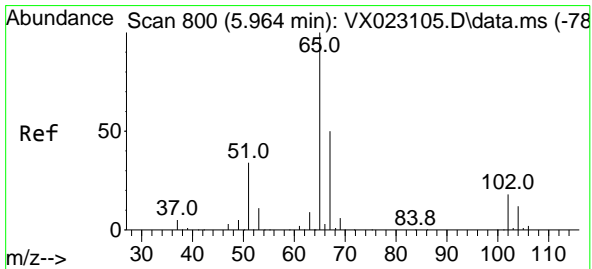
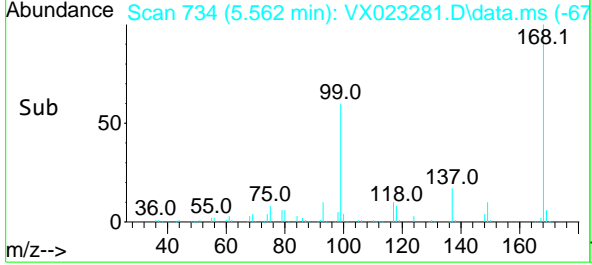
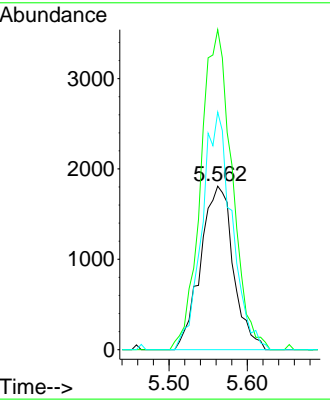
#31
 Cyclohexane
 Concen: 1.350 ug/l
 RT: 5.562 min Scan# 734
 Delta R.T. 0.085 min
 Lab File: VX023281.D
 Acq: 14 Jul 2021 15:58

Instrument :
 MSVOA_X
 ClientSampled :

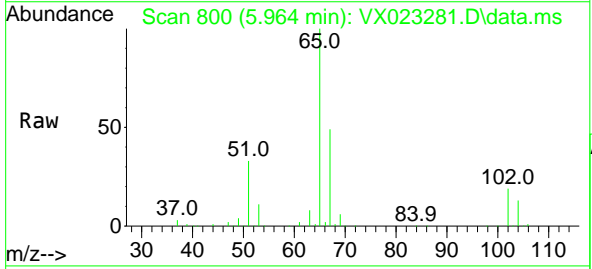


Tgt Ion: 56 Resp: 5252

Ion	Ratio	Lower	Upper
56	100		
69	195.7	25.3	37.9#
84	145.3	71.4	107.0#

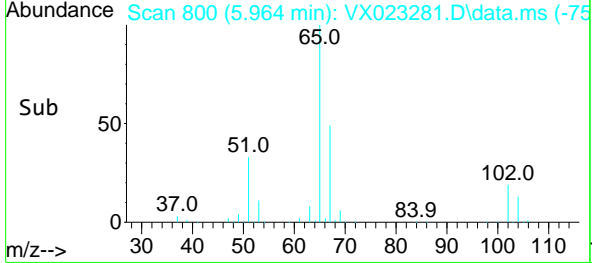
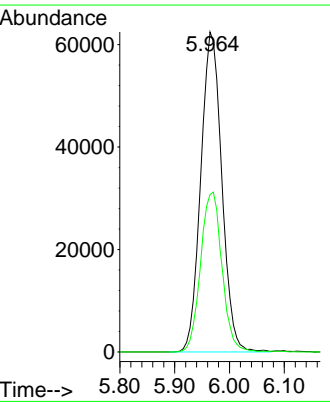


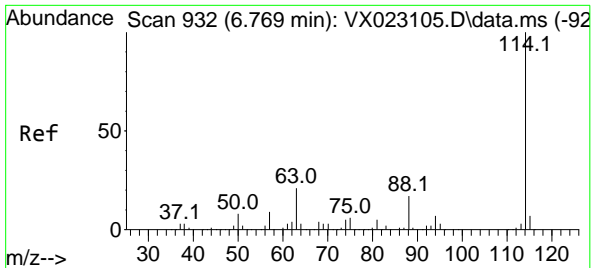
#33
 1,2-Dichloroethane-d4
 Concen: 51.165 ug/l
 RT: 5.964 min Scan# 800
 Delta R.T. 0.000 min
 Lab File: VX023281.D
 Acq: 14 Jul 2021 15:58



Tgt Ion: 65 Resp: 166217

Ion	Ratio	Lower	Upper
65	100		
67	50.7	0.0	105.4

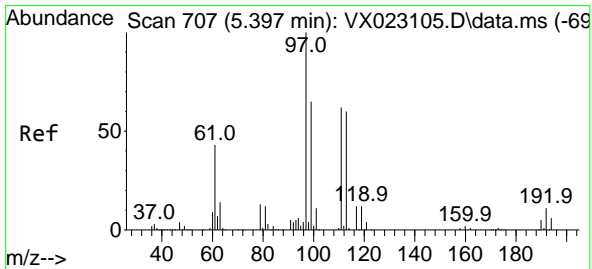
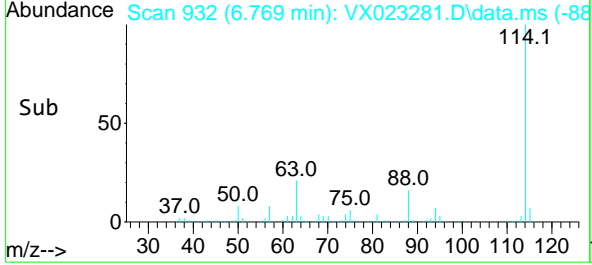
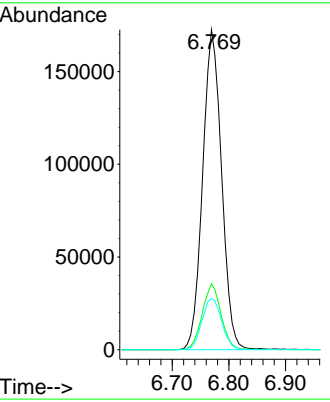
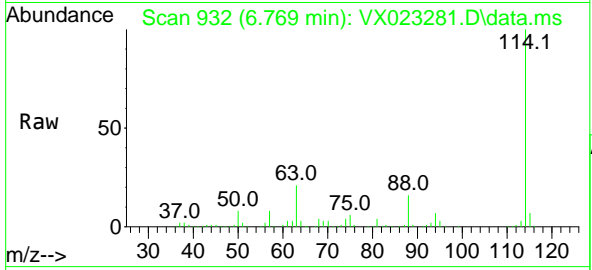




#34
 1,4-Difluorobenzene
 Concen: 50.000 ug/l
 RT: 6.769 min Scan# 932
 Delta R.T. 0.000 min
 Lab File: VX023281.D
 Acq: 14 Jul 2021 15:58

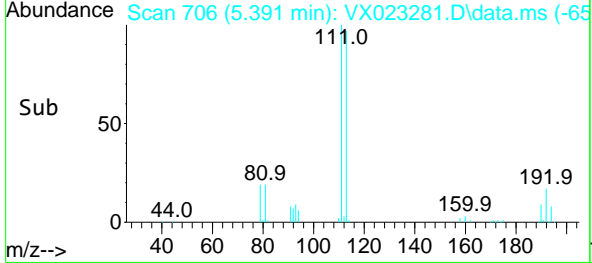
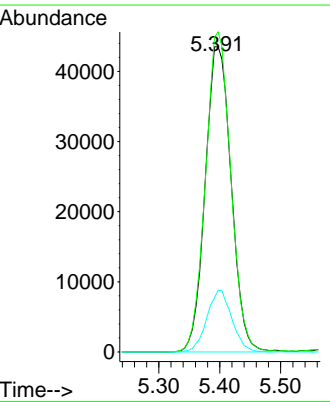
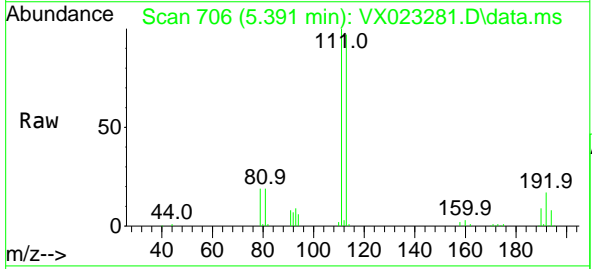
Instrument :
 MSVOA_X
 ClientSampled :

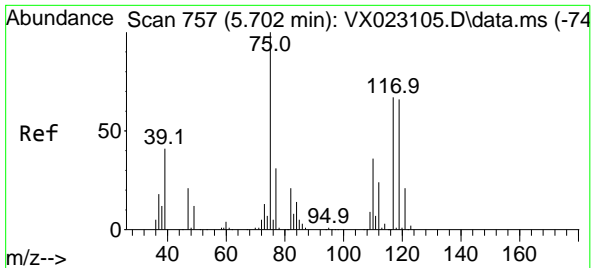
Tgt Ion	Resp	Lower	Upper
114	100		
63	20.6	0.0	40.8
88	16.0	0.0	32.8



#35
 Dibromofluoromethane
 Concen: 49.997 ug/l
 RT: 5.391 min Scan# 706
 Delta R.T. -0.006 min
 Lab File: VX023281.D
 Acq: 14 Jul 2021 15:58

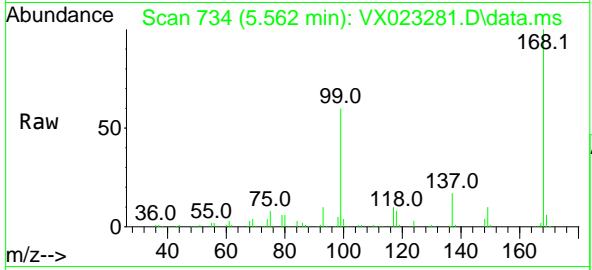
Tgt Ion	Resp	Lower	Upper
113	100		
111	102.3	81.9	122.9
192	19.4	16.7	25.1





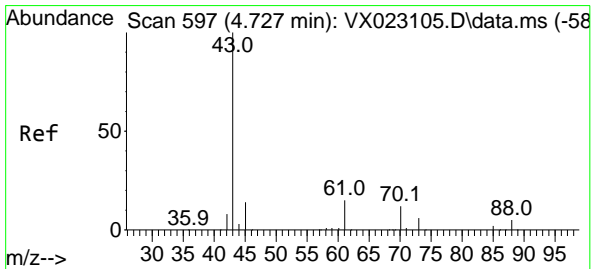
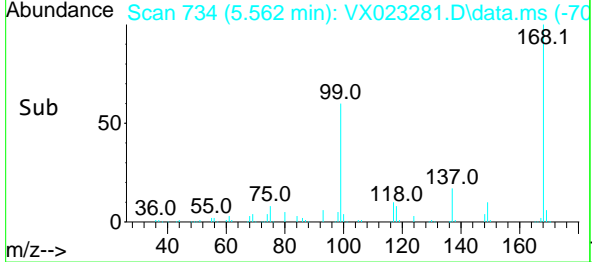
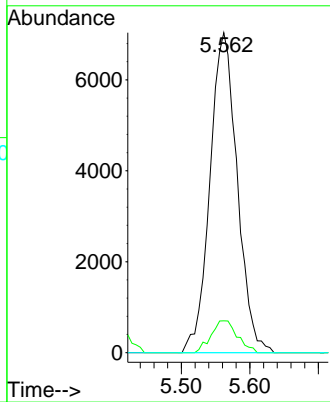
#36
 1,1-Dichloropropene
 Concen: 5.465 ug/l
 RT: 5.562 min Scan# 734
 Delta R.T. -0.140 min
 Lab File: VX023281.D
 Acq: 14 Jul 2021 15:58

Instrument :
 MSVOA_X
 ClientSampled :

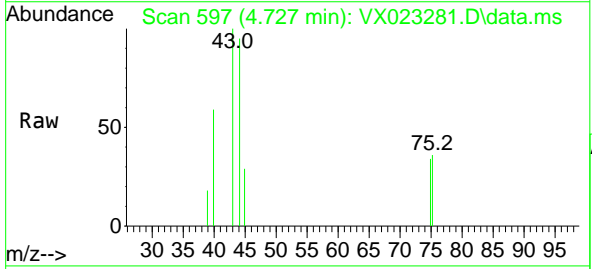


Tgt Ion: 75 Resp: 19480

Ion	Ratio	Lower	Upper
75	100		
110	9.6	18.1	54.4#
77	0.0	25.3	37.9#

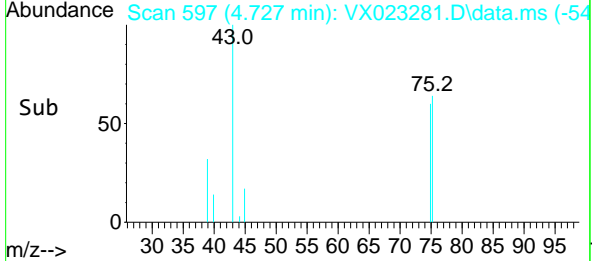
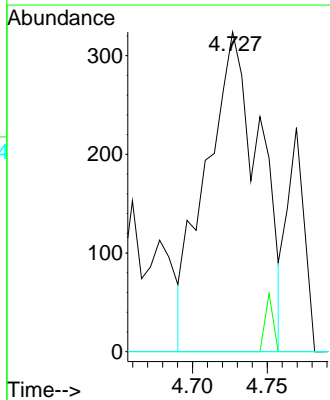


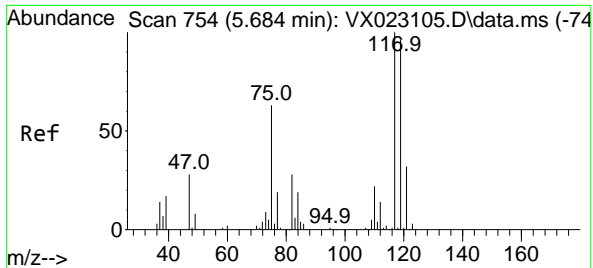
#37
 Ethyl Acetate
 Concen: 0.209 ug/l
 RT: 4.727 min Scan# 597
 Delta R.T. -0.000 min
 Lab File: VX023281.D
 Acq: 14 Jul 2021 15:58



Tgt Ion: 43 Resp: 811

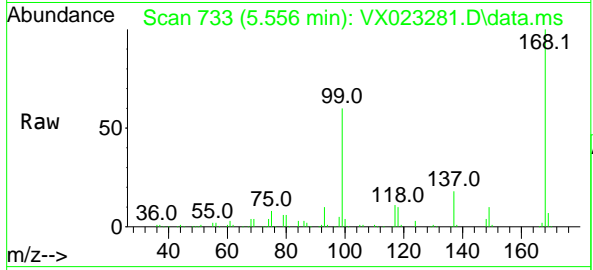
Ion	Ratio	Lower	Upper
43	100		
61	0.0	12.8	19.2#
70	0.0	10.5	15.7#





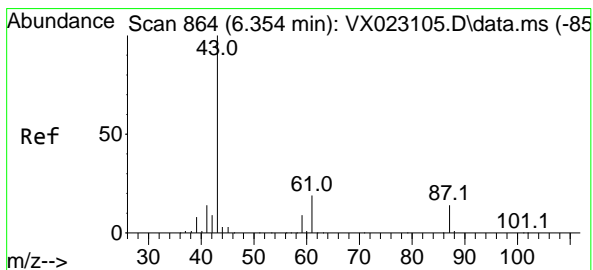
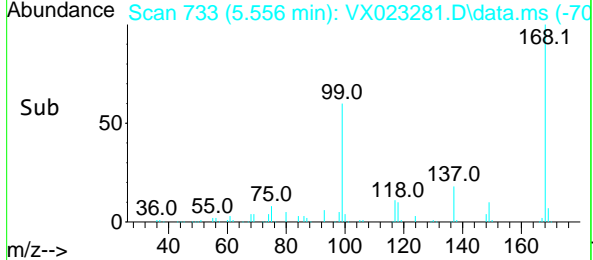
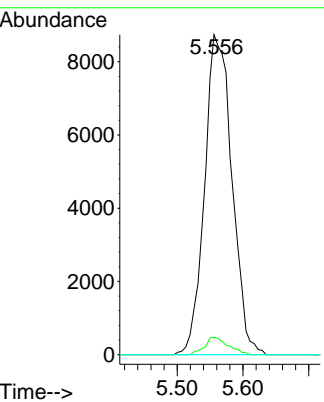
#38
 Carbon Tetrachloride
 Concen: 6.803 ug/l
 RT: 5.556 min Scan# 733
 Delta R.T. -0.128 min
 Lab File: VX023281.D
 Acq: 14 Jul 2021 15:58

Instrument :
 MSVOA_X
 ClientSampled :

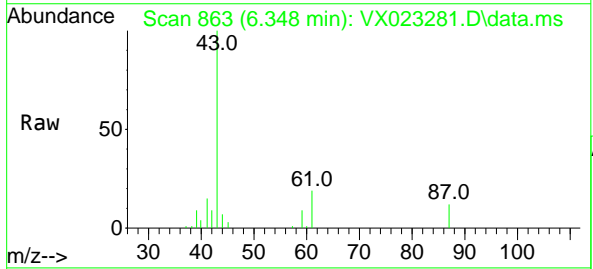


Tgt Ion: 117 Resp: 25314

Ion	Ratio	Lower	Upper
117	100		
119	5.4	76.2	114.2#
121	0.0	24.8	37.2#

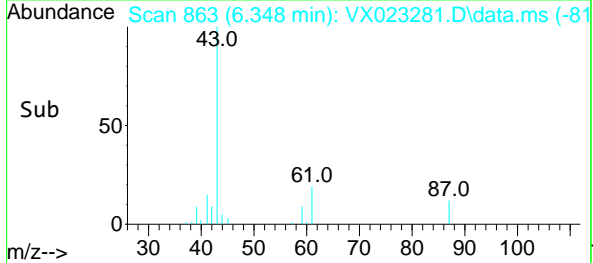
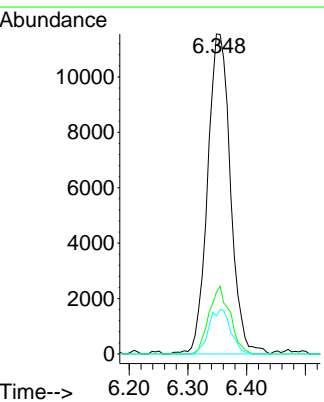


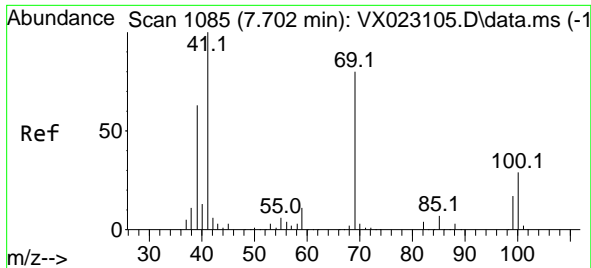
#43
 Isopropyl Acetate
 Concen: 4.818 ug/l
 RT: 6.348 min Scan# 863
 Delta R.T. -0.006 min
 Lab File: VX023281.D
 Acq: 14 Jul 2021 15:58



Tgt Ion: 43 Resp: 31163

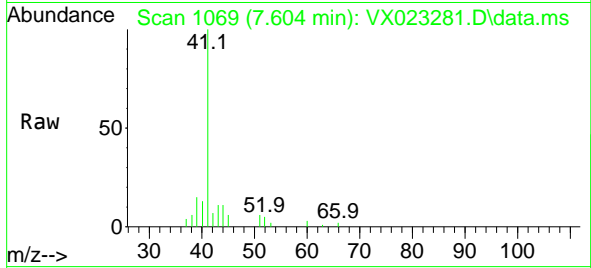
Ion	Ratio	Lower	Upper
43	100		
61	19.5	18.2	27.4
87	13.3	12.5	18.7



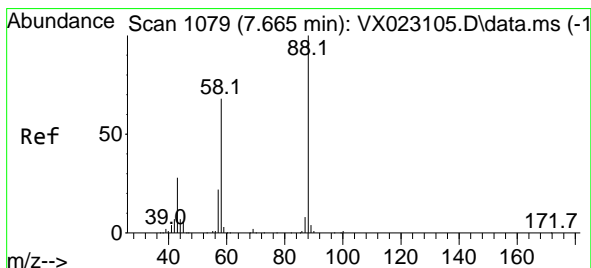
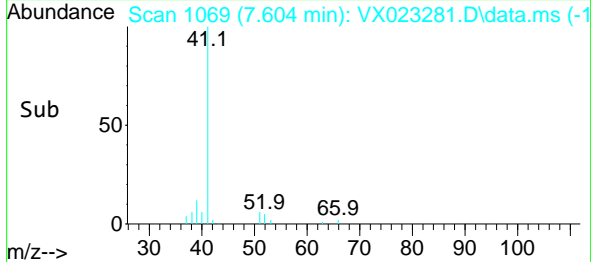
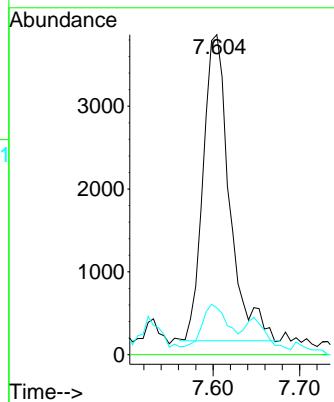


#48
 Methyl methacrylate
 Concen: 2.470 ug/l
 RT: 7.604 min Scan# 1069
 Delta R.T. -0.098 min
 Lab File: VX023281.D
 Acq: 14 Jul 2021 15:58

Instrument :
 MSVOA_X
 ClientSampled :

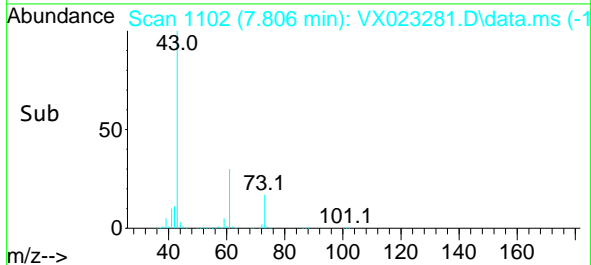
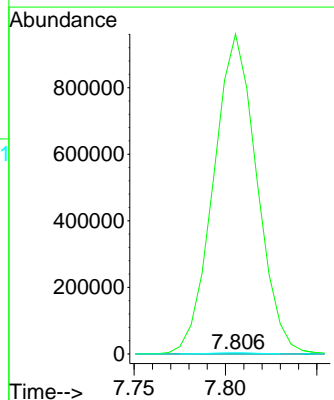
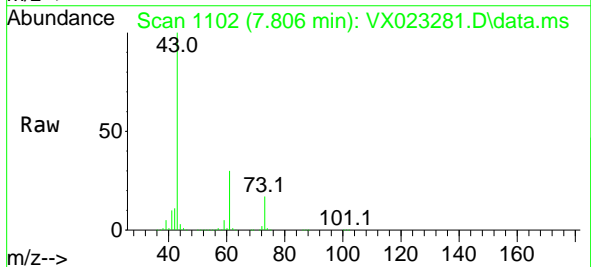


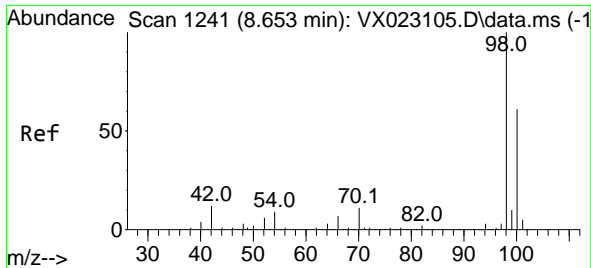
Tgt Ion: 41 Resp: 7841
 Ion Ratio Lower Upper
 41 100
 69 0.0 76.0 114.0#
 39 0.0 44.6 67.0#



#49
 1,4-Dioxane
 Concen: 3.906 ug/l
 RT: 7.806 min Scan# 1102
 Delta R.T. 0.141 min
 Lab File: VX023281.D
 Acq: 14 Jul 2021 15:58

Tgt Ion: 88 Resp: 279
 Ion Ratio Lower Upper
 88 100
 43 570027.2 23.2 34.8#
 58 2493.5 55.0 82.4#

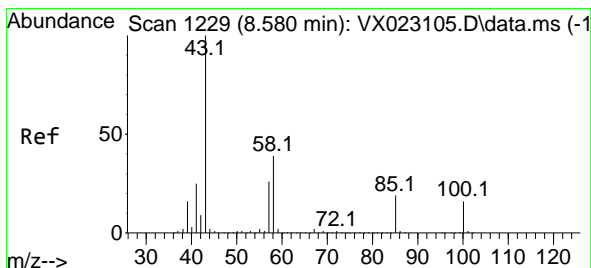
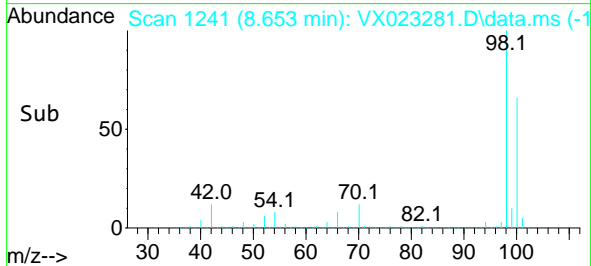
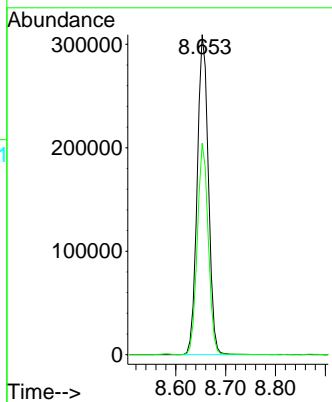
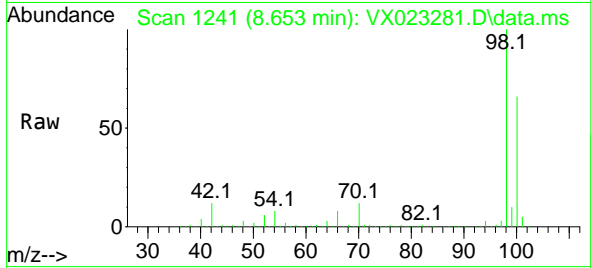




#50
 Toluene-d8
 Concen: 49.825 ug/l
 RT: 8.653 min Scan# 1241
 Delta R.T. -0.000 min
 Lab File: VX023281.D
 Acq: 14 Jul 2021 15:58

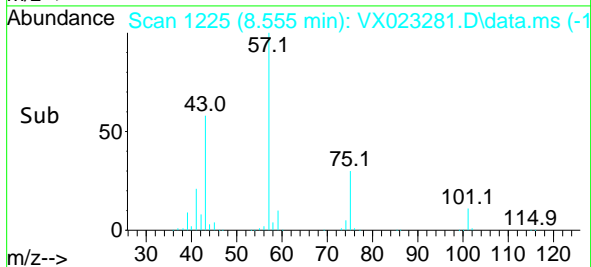
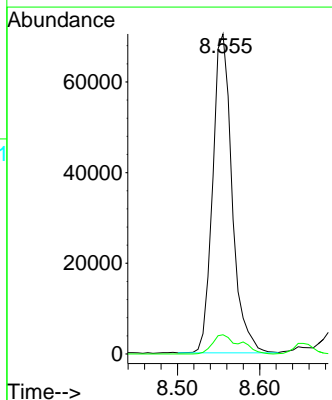
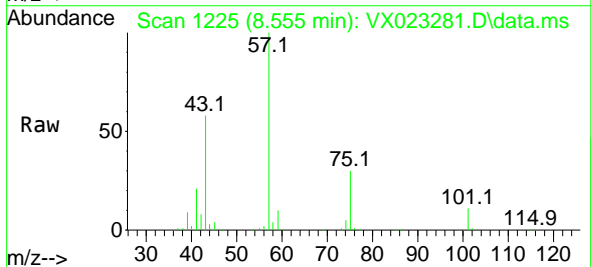
Instrument :
 MSVOA_X
 ClientSampled :

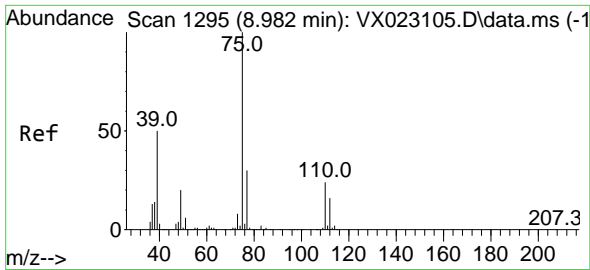
Tgt Ion: 98 Resp: 479922
 Ion Ratio Lower Upper
 98 100
 100 64.8 51.9 77.9



#51
 4-Methyl-2-Pentanone
 Concen: 28.791 ug/l
 RT: 8.555 min Scan# 1225
 Delta R.T. -0.025 min
 Lab File: VX023281.D
 Acq: 14 Jul 2021 15:58

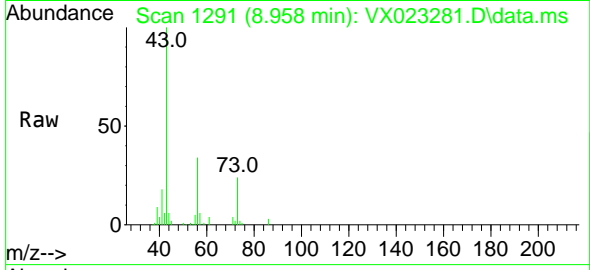
Tgt Ion: 43 Resp: 115396
 Ion Ratio Lower Upper
 43 100
 58 8.6 35.4 53.0#



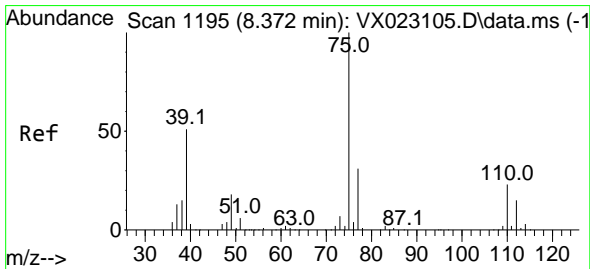
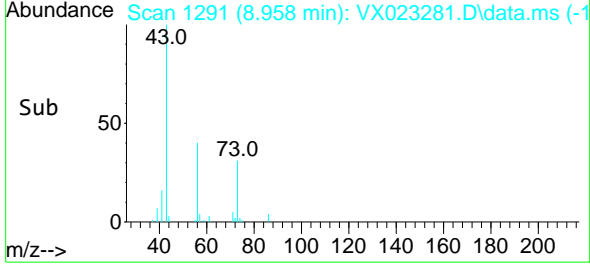
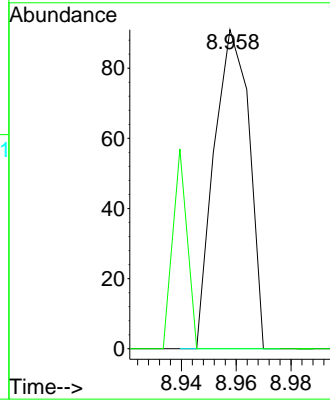


#53
 t-1,3-Dichloropropene
 Concen: 2.754 ug/l
 RT: 8.958 min Scan# 1291
 Delta R.T. -0.024 min
 Lab File: VX023281.D
 Acq: 14 Jul 2021 15:58

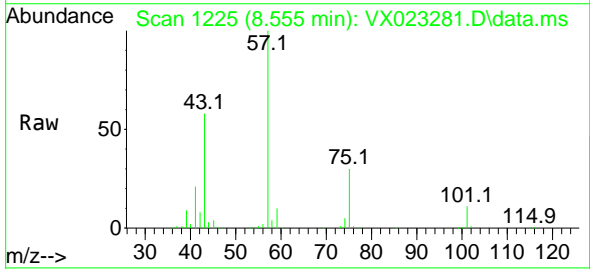
Instrument :
 MSVOA_X
 ClientSampled :



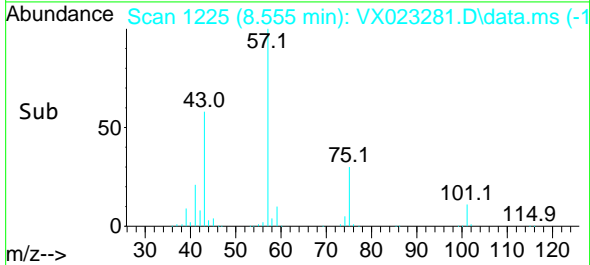
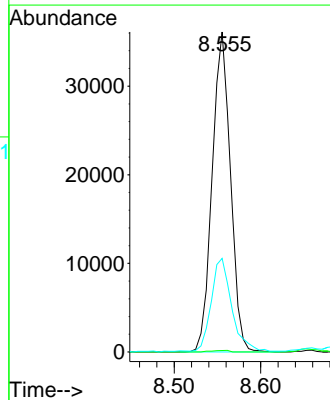
Tgt Ion: 75 Resp: 81
 Ion Ratio Lower Upper
 75 100
 77 0.0 24.9 37.3#

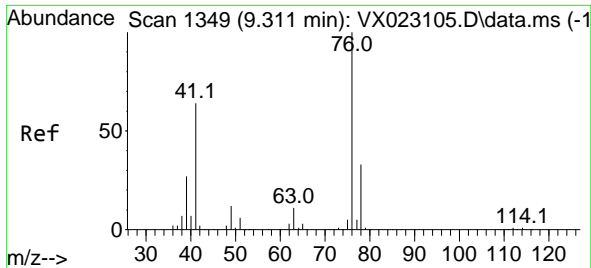


#54
 cis-1,3-Dichloropropene
 Concen: 13.102 ug/l
 RT: 8.555 min Scan# 1225
 Delta R.T. 0.183 min
 Lab File: VX023281.D
 Acq: 14 Jul 2021 15:58



Tgt Ion: 75 Resp: 52979
 Ion Ratio Lower Upper
 75 100
 77 0.5 25.7 38.5#
 39 29.0 35.1 52.7#

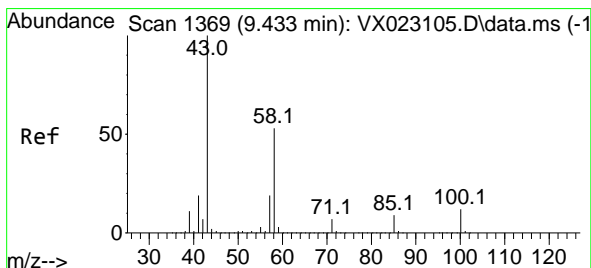
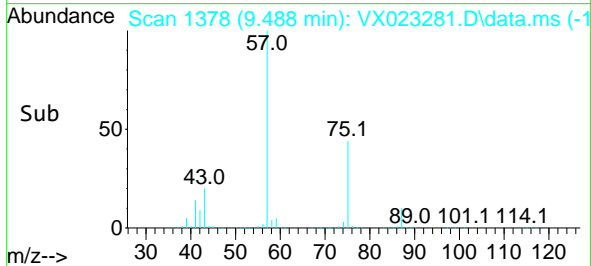
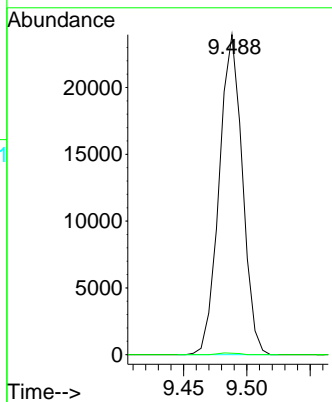
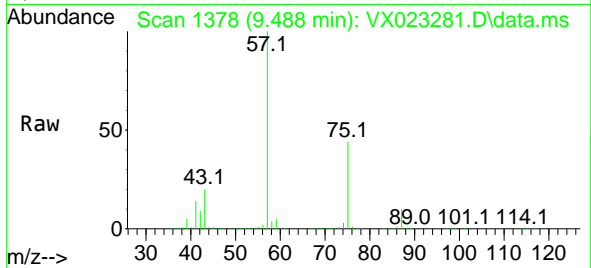




#57
 1,3-Dichloropropane
 Concen: 6.566 ug/l
 RT: 9.488 min Scan# 1378
 Delta R.T. 0.177 min
 Lab File: VX023281.D
 Acq: 14 Jul 2021 15:58

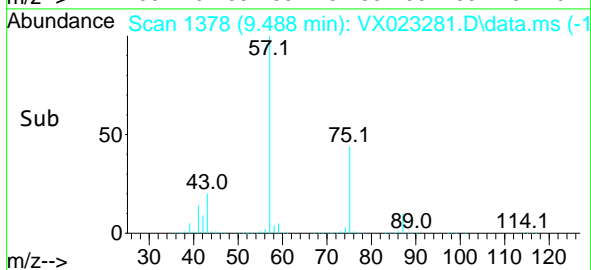
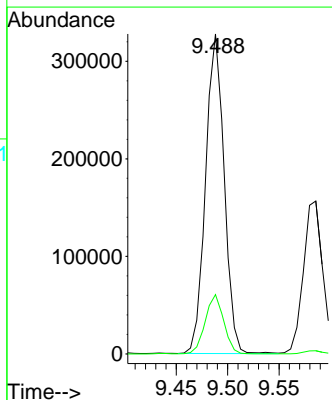
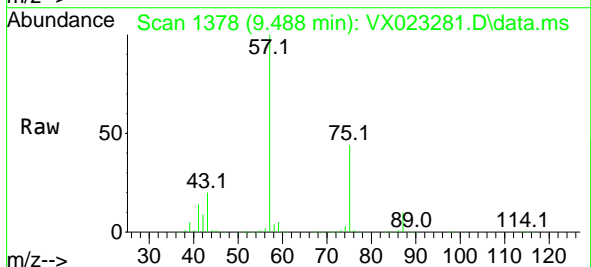
Instrument : MSVOA_X
 ClientSampled :

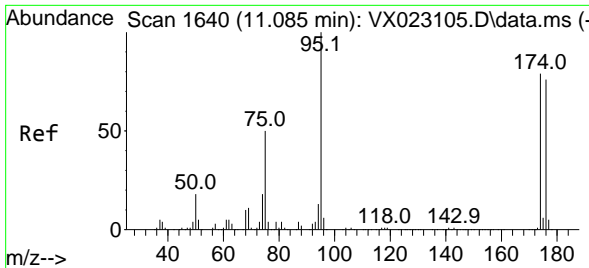
Tgt Ion: 76 Resp: 30524
 Ion Ratio Lower Upper
 76 100
 78 0.5 26.2 39.2#



#59
 2-Hexanone
 Concen: 134.028 ug/l
 RT: 9.488 min Scan# 1378
 Delta R.T. 0.055 min
 Lab File: VX023281.D
 Acq: 14 Jul 2021 15:58

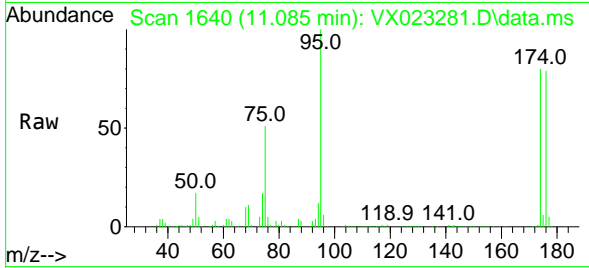
Tgt Ion: 43 Resp: 412177
 Ion Ratio Lower Upper
 43 100
 58 18.4 30.9 92.8#





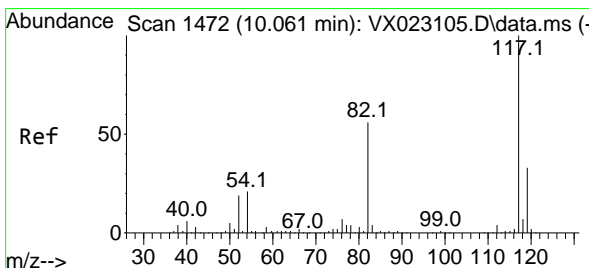
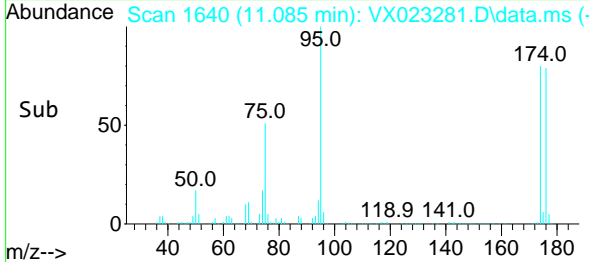
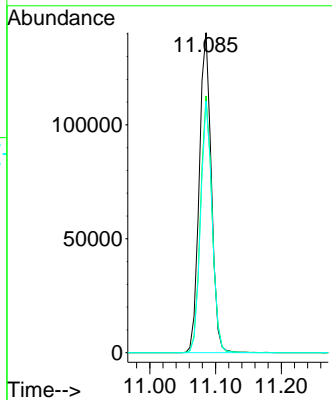
#62
 4-Bromofluorobenzene
 Concen: 48.043 ug/l
 RT: 11.085 min Scan# 1640
 Delta R.T. 0.000 min
 Lab File: VX023281.D
 Acq: 14 Jul 2021 15:58

Instrument :
 MSVOA_X
 ClientSampled :

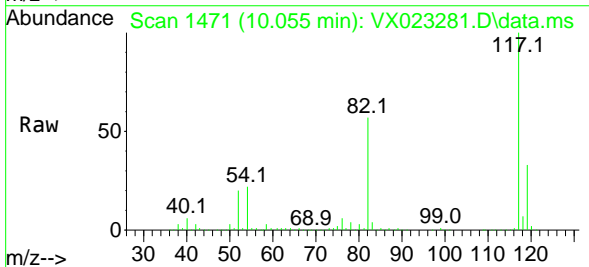


Tgt Ion: 95 Resp: 178650

Ion	Ratio	Lower	Upper
95	100		
174	77.0	0.0	154.6
176	75.2	0.0	155.8

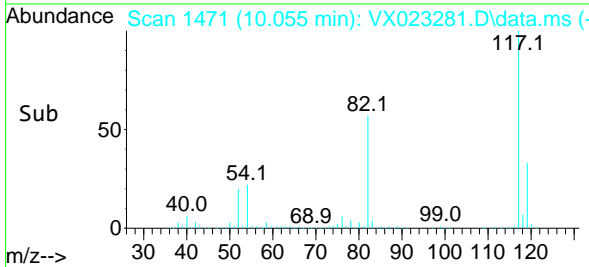
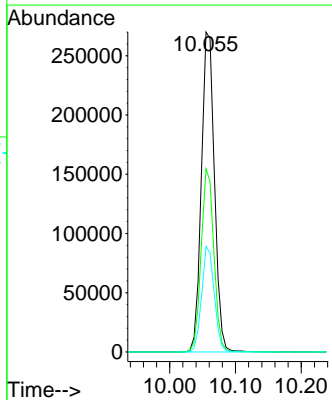


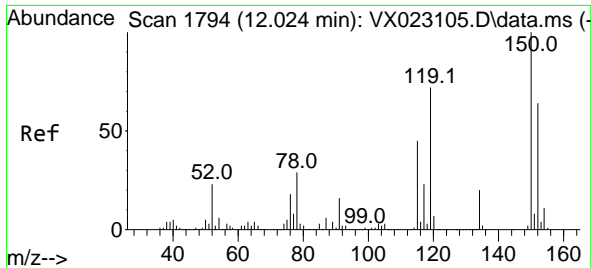
#63
 Chlorobenzene-d5
 Concen: 50.000 ug/l
 RT: 10.055 min Scan# 1471
 Delta R.T. -0.006 min
 Lab File: VX023281.D
 Acq: 14 Jul 2021 15:58



Tgt Ion: 117 Resp: 373839

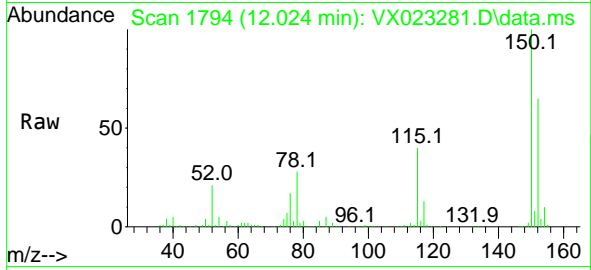
Ion	Ratio	Lower	Upper
117	100		
82	57.3	47.4	71.2
119	32.9	26.6	39.8





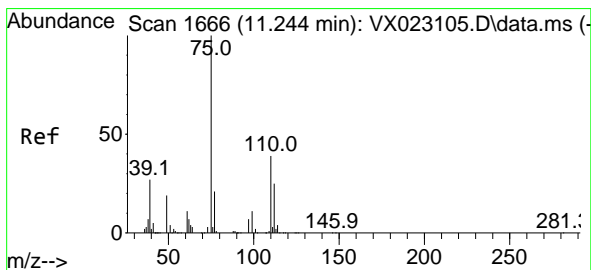
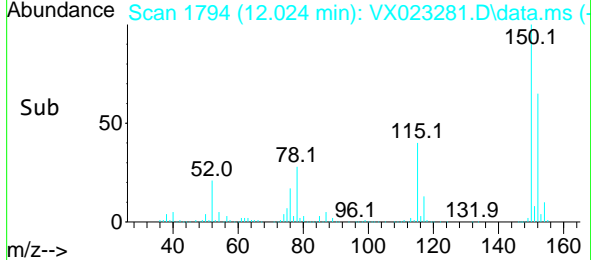
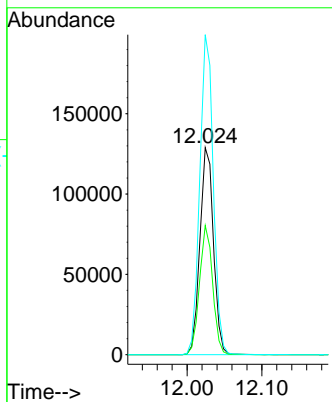
#72
 1,4-Dichlorobenzene-d4
 Concen: 50.000 ug/l
 RT: 12.024 min Scan# 1794
 Delta R.T. 0.000 min
 Lab File: VX023281.D
 Acq: 14 Jul 2021 15:58

Instrument :
 MSVOA_X
 ClientSampled :

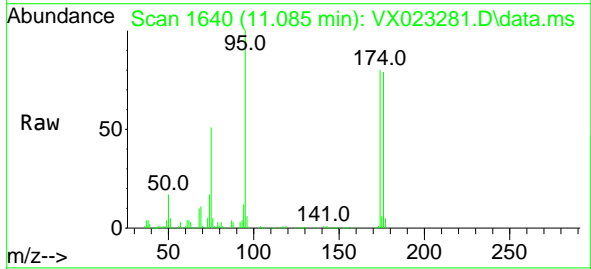


Tgt Ion:152 Resp: 162396

Ion	Ratio	Lower	Upper
152	100		
115	60.6	41.1	123.3
150	154.2	0.0	349.0

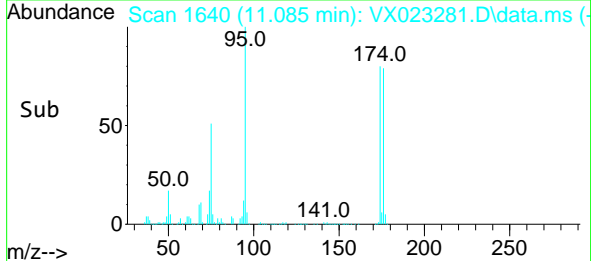
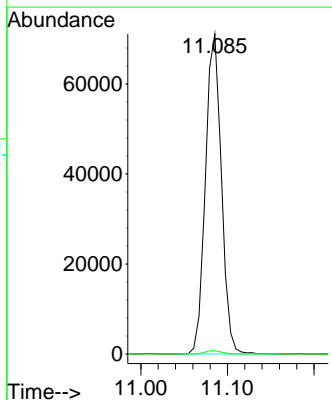


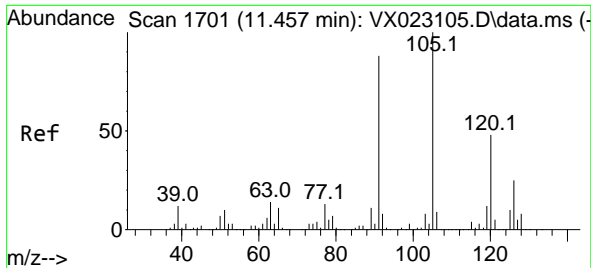
#76
 1,2,3-Trichloropropane
 Concen: 27.814 ug/l
 RT: 11.085 min Scan# 1640
 Delta R.T. -0.159 min
 Lab File: VX023281.D
 Acq: 14 Jul 2021 15:58



Tgt Ion: 75 Resp: 90896

Ion	Ratio	Lower	Upper
75	100		
77	1.0	19.1	57.5#

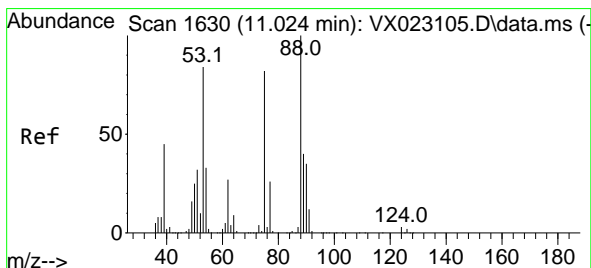
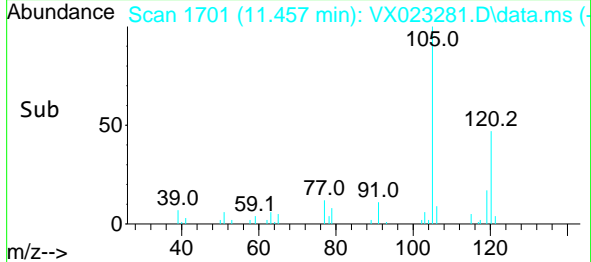
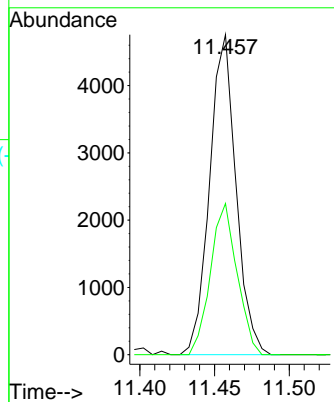
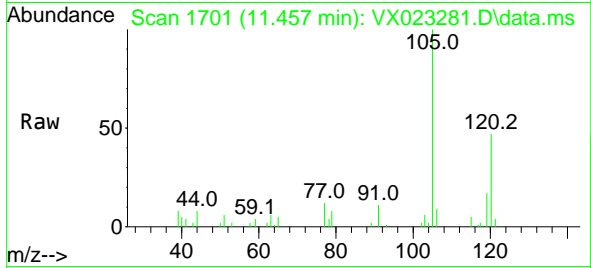




#80
 1,3,5-Trimethylbenzene
 Concen: 0.593 ug/l
 RT: 11.457 min Scan# 1701
 Delta R.T. 0.00 min
 Lab File: VX023281.D
 Acq: 14 Jul 2021 15:58

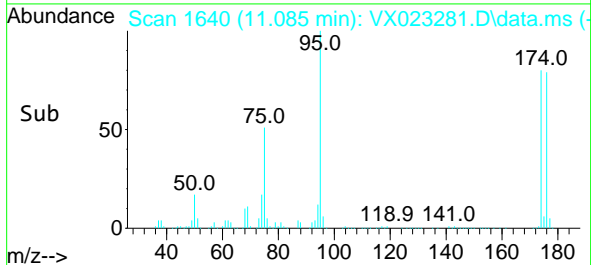
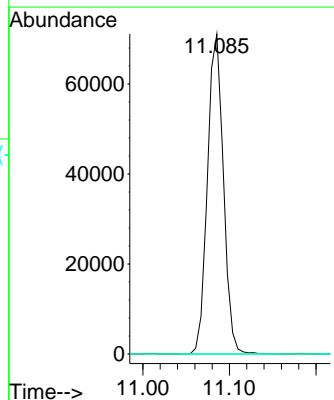
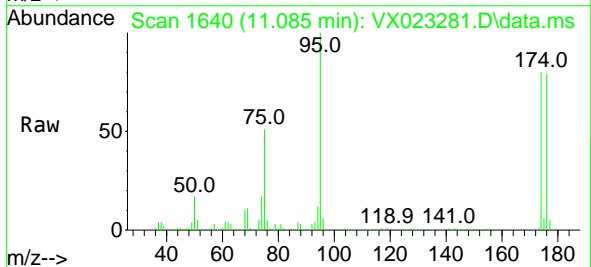
Instrument :
 MSVOA_X
 ClientSampled :

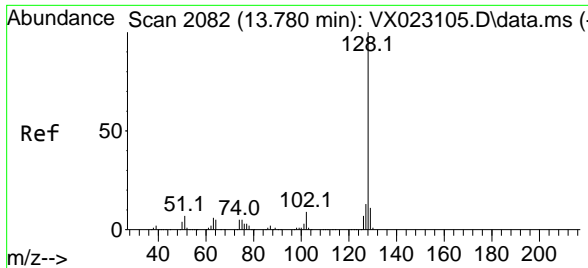
Tgt Ion:105 Resp: 5839
 Ion Ratio Lower Upper
 105 100
 120 47.5 23.8 71.5



#81
 trans-1,4-Dichloro-2-butene
 Concen: 75.029 ug/l
 RT: 11.085 min Scan# 1640
 Delta R.T. 0.061 min
 Lab File: VX023281.D
 Acq: 14 Jul 2021 15:58

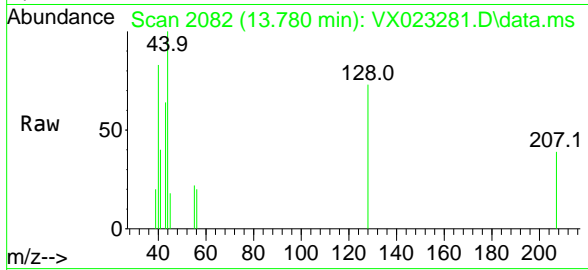
Tgt Ion: 75 Resp: 90896
 Ion Ratio Lower Upper
 75 100
 53 0.0 74.5 111.7#
 89 0.0 37.9 56.9#





#95
 Naphthalene
 Concen: 1.296 ug/l
 RT: 13.780 min Scan# 2082
 Delta R.T. 0.000 min
 Lab File: VX023281.D
 Acq: 14 Jul 2021 15:58

Instrument :
 MSVOA_X
 ClientSampled :



Tgt Ion	Resp	Lower	Upper
128	100		
127	0.0	10.3	15.5#
129	15.6	8.8	13.2#

