

Data Path : Z:\voasrv\HPCHEM1\MSVOA_X\Data\VX071421\
 Data File : VX023285.D
 Acq On : 14 Jul 2021 17:33
 Operator : JC/MD
 Sample : M3026-03
 Misc : 5.0mL/MSVOA_X/WATER
 ALS Vial : 18 Sample Multiplier: 1

Instrument :
 MSVOA_X
 ClientSampleId :

Quant Time: Jul 15 04:29:22 2021
 Quant Method : Z:\voasrv\HPCHEM1\MSVOA_X\Method\82X070221W.M
 Quant Title : SW846 8260
 QLast Update : Fri Jul 02 14:29:42 2021
 Response via : Initial Calibration

Compound	R.T.	QIon	Response	Conc	Units	Dev(Min)

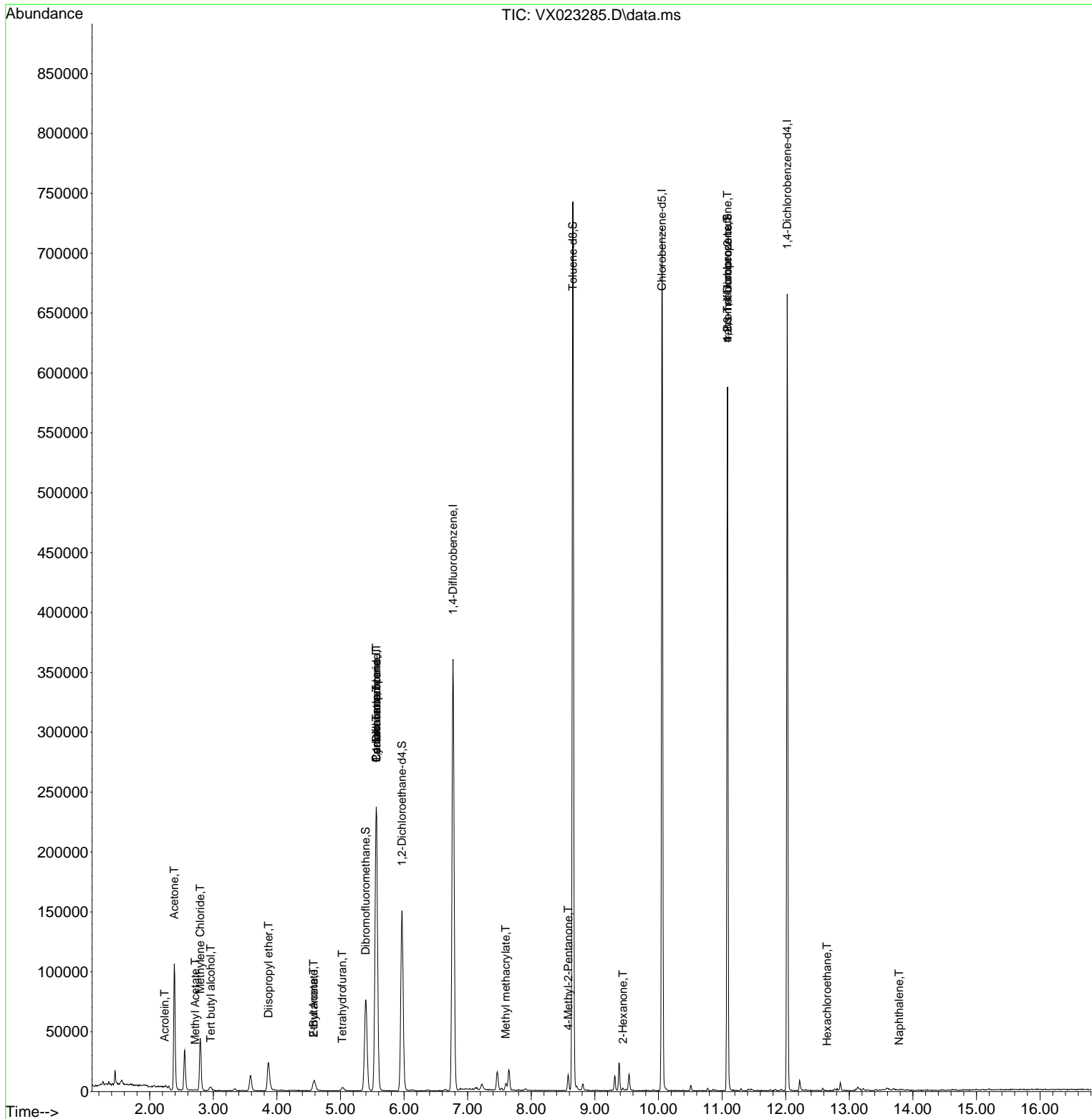
Internal Standards						
1) Pentafluorobenzene	5.562	168	220940	50.000	ug/l	0.00
34) 1,4-Difluorobenzene	6.769	114	363190	50.000	ug/l	0.00
63) Chlorobenzene-d5	10.055	117	321659	50.000	ug/l	0.00
72) 1,4-Dichlorobenzene-d4	12.024	152	135698	50.000	ug/l	0.00
System Monitoring Compounds						
33) 1,2-Dichloroethane-d4	5.964	65	154800	52.131	ug/l	0.00
Spiked Amount	50.000	Range 78 - 117	Recovery	=	104.260%	
35) Dibromofluoromethane	5.397	113	66034	28.156	ug/l	0.00
Spiked Amount	50.000	Range 75 - 124	Recovery	=	56.320%#	
50) Toluene-d8	8.653	98	430943	49.258	ug/l	0.00
Spiked Amount	50.000	Range 92 - 112	Recovery	=	98.520%	
62) 4-Bromofluorobenzene	11.085	95	153561	45.466	ug/l	0.00
Spiked Amount	50.000	Range 83 - 123	Recovery	=	90.940%	
Target Compounds						
						Qvalue
5) Bromomethane	1.605	94	194	Below Cal		92
11) Tert butyl alcohol	2.959	59	2375	3.802	ug/l #	76
13) Acrolein	2.233	56	317	0.762	ug/l	84
16) Acetone	2.386	43	109457	93.171	ug/l	91
18) Methyl Acetate	2.715	43	1153	0.404	ug/l #	76
20) Methylene Chloride	2.794	84	19826	7.838	ug/l	88
22) Diisopropyl ether	3.867	45	1810	0.251	ug/l #	1
25) 2-Butanone	4.574	43	7380	4.166	ug/l	92
29) Tetrahydrofuran	5.025	42	2312	2.030	ug/l #	89
31) Cyclohexane	5.562	56	4648	1.307	ug/l #	8
36) 1,1-Dichloropropene	5.562	75	17515	5.410	ug/l #	49
37) Ethyl Acetate	4.574	43	7380	2.089	ug/l #	69
38) Carbon Tetrachloride	5.562	117	22946	6.790	ug/l #	16
48) Methyl methacrylate	7.598	41	7939	2.754	ug/l #	20
51) 4-Methyl-2-Pentanone	8.580	43	7379	2.027	ug/l	99
59) 2-Hexanone	9.439	43	982	0.352	ug/l	88
76) 1,2,3-Trichloropropane	11.085	75	77946	28.544	ug/l #	39
81) trans-1,4-Dichloro-2-b...	11.085	75	77946	76.873	ug/l #	12
90) Hexachloroethane	12.652	117	20	3.009	ug/l #	9
95) Naphthalene	13.786	128	435	1.317	ug/l #	76

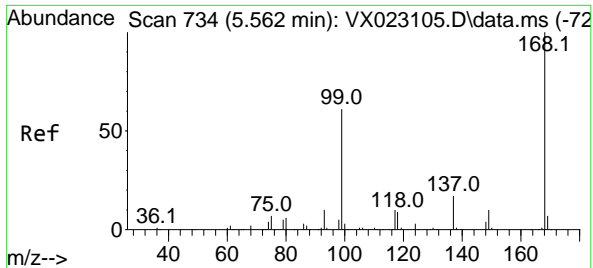
(#) = qualifier out of range (m) = manual integration (+) = signals summed

Data Path : Z:\voasrv\HPCHEM1\MSVOA_X\Data\VX071421\
 Data File : VX023285.D
 Acq On : 14 Jul 2021 17:33
 Operator : JC/MD
 Sample : M3026-03
 Misc : 5.0mL/MSVOA_X/WATER
 ALS Vial : 18 Sample Multiplier: 1

Instrument :
 MSVOA_X
 Client Sampled :

Quant Time: Jul 15 04:29:22 2021
 Quant Method : Z:\voasrv\HPCHEM1\MSVOA_X\Method\82X070221W.M
 Quant Title : SW846 8260
 QLast Update : Fri Jul 02 14:29:42 2021
 Response via : Initial Calibration

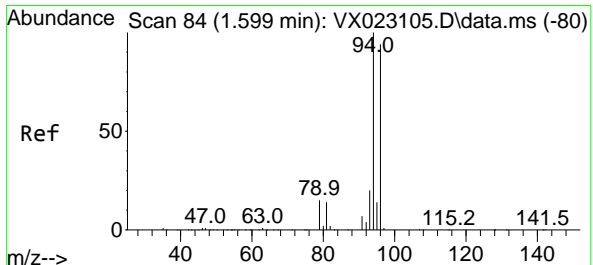
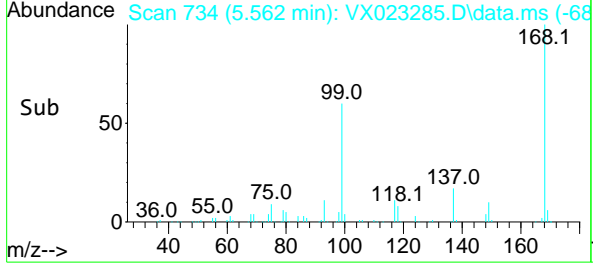
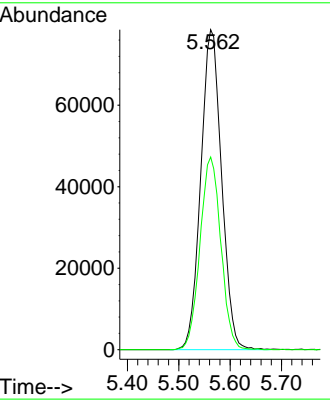
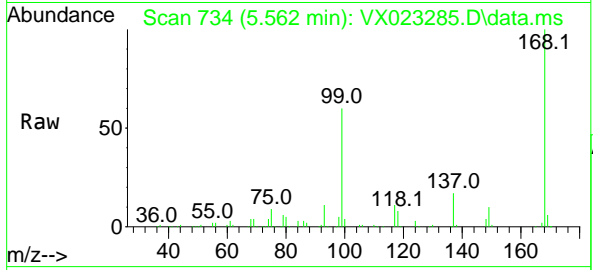




#1
 Pentafluorobenzene
 Concen: 50.000 ug/l
 RT: 5.562 min Scan# 734
 Delta R.T. -0.000 min
 Lab File: VX023285.D
 Acq: 14 Jul 2021 17:33

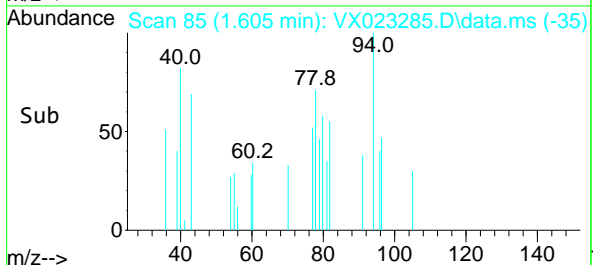
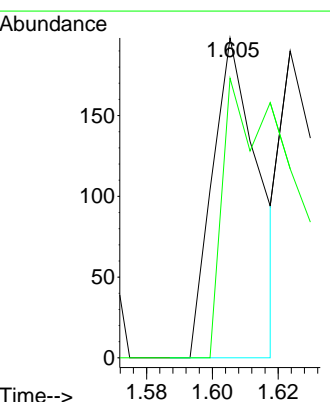
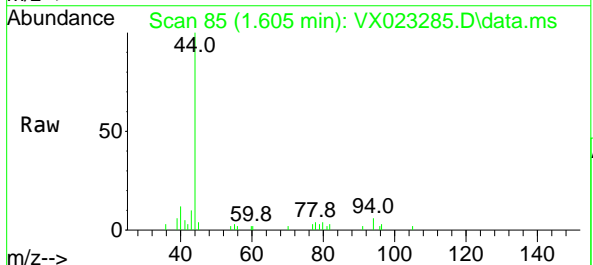
Instrument :
 MSVOA_X
 ClientSampled :

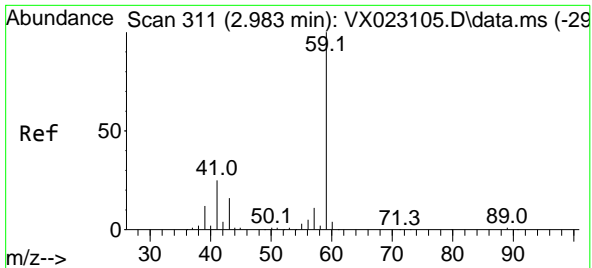
Tgt Ion:168 Resp: 220940
 Ion Ratio Lower Upper
 168 100
 99 60.2 45.8 68.6



#5
 Bromomethane
 Concen: Below Cal
 RT: 1.605 min Scan# 85
 Delta R.T. 0.006 min
 Lab File: VX023285.D
 Acq: 14 Jul 2021 17:33

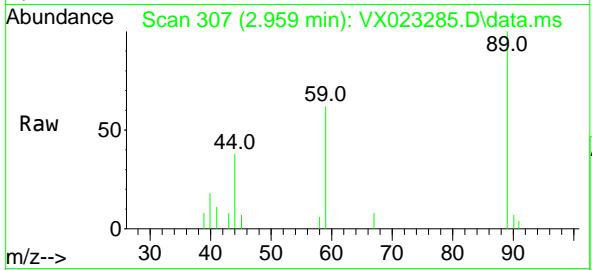
Tgt Ion: 94 Resp: 194
 Ion Ratio Lower Upper
 94 100
 96 87.4 76.4 114.6



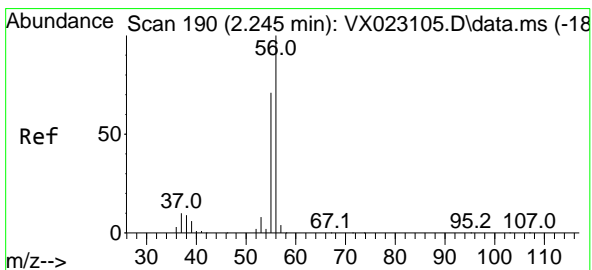
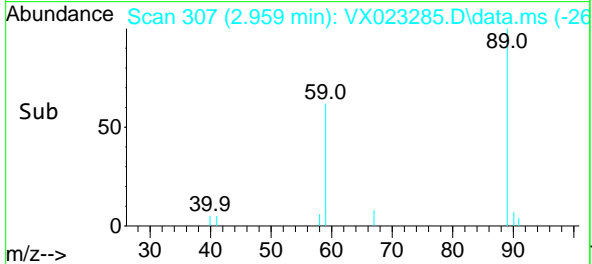
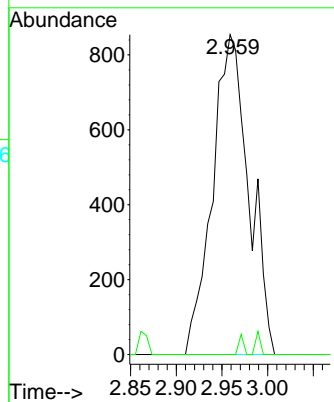


#11
 Tert butyl alcohol
 Concen: 3.802 ug/l
 RT: 2.959 min Scan# 307
 Delta R.T. -0.024 min
 Lab File: VX023285.D
 Acq: 14 Jul 2021 17:33

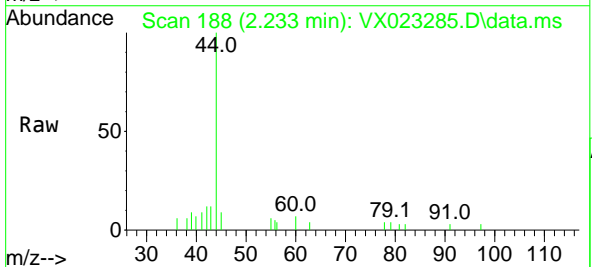
Instrument :
 MSVOA_X
 ClientSampled :



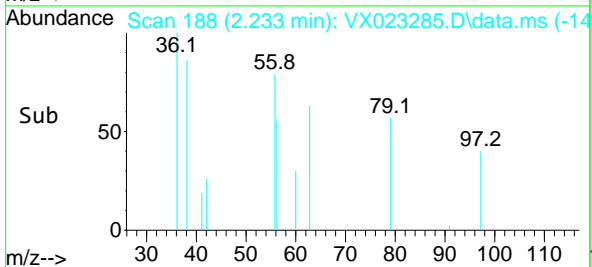
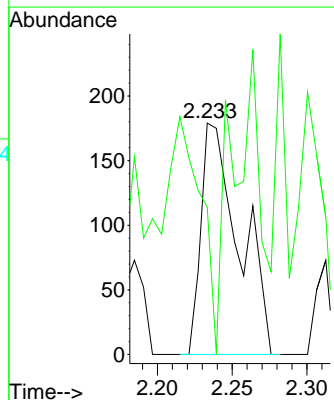
Tgt Ion: 59 Resp: 2375
 Ion Ratio Lower Upper
 59 100
 57 0.8 7.8 11.8#

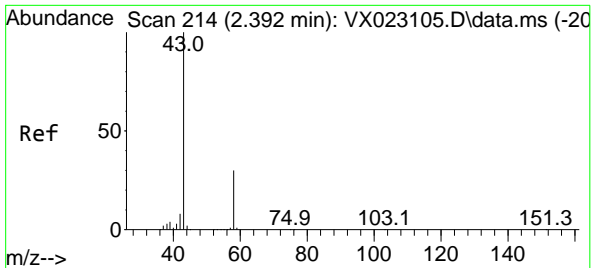


#13
 Acrolein
 Concen: 0.762 ug/l
 RT: 2.233 min Scan# 188
 Delta R.T. -0.012 min
 Lab File: VX023285.D
 Acq: 14 Jul 2021 17:33



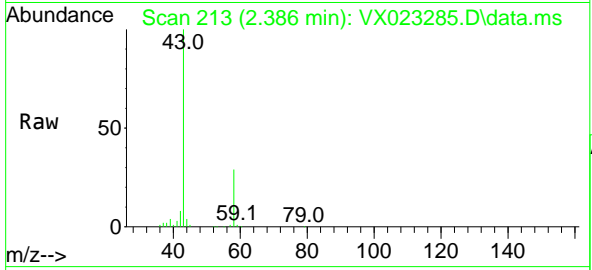
Tgt Ion: 56 Resp: 317
 Ion Ratio Lower Upper
 56 100
 55 83.3 56.4 84.6



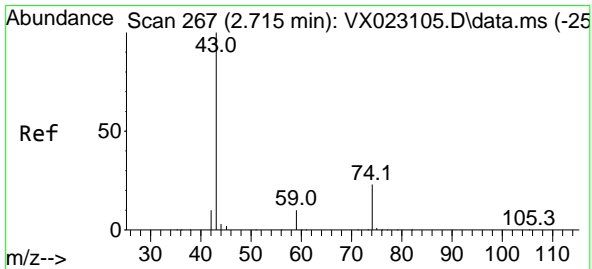
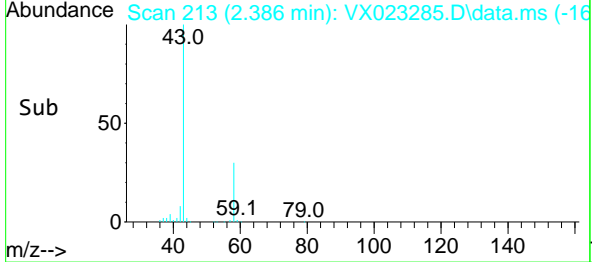
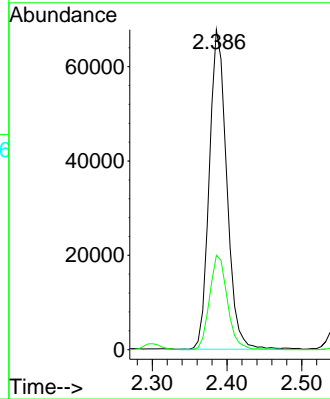


#16
 Acetone
 Concen: 93.171 ug/l
 RT: 2.386 min Scan# 213
 Delta R.T. -0.006 min
 Lab File: VX023285.D
 Acq: 14 Jul 2021 17:33

Instrument :
 MSVOA_X
 ClientSampled :

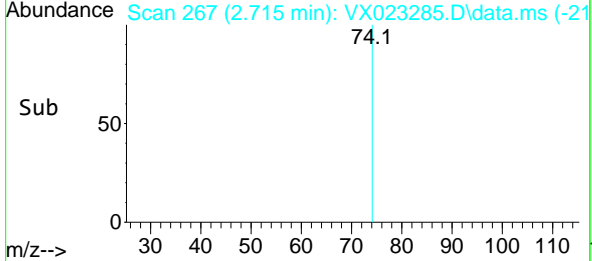
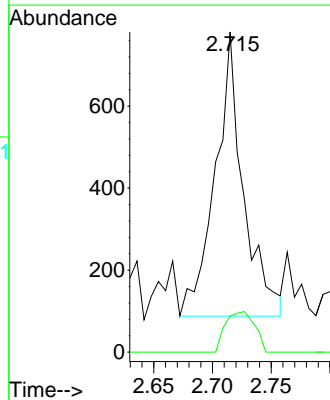
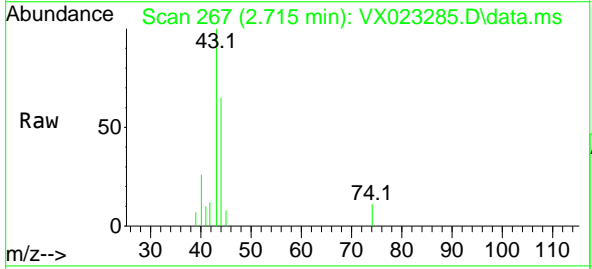


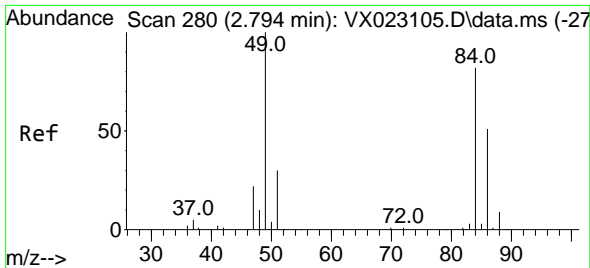
Tgt Ion: 43 Resp: 109457
 Ion Ratio Lower Upper
 43 100
 58 29.5 27.8 41.8



#18
 Methyl Acetate
 Concen: 0.404 ug/l
 RT: 2.715 min Scan# 267
 Delta R.T. -0.000 min
 Lab File: VX023285.D
 Acq: 14 Jul 2021 17:33

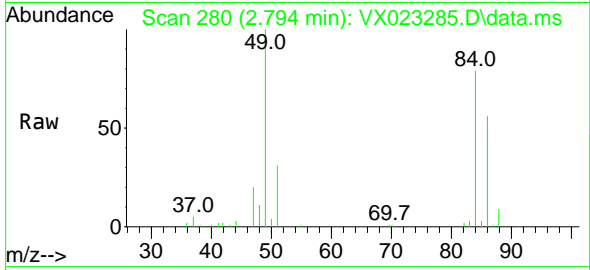
Tgt Ion: 43 Resp: 1153
 Ion Ratio Lower Upper
 43 100
 74 14.9 21.9 32.9#





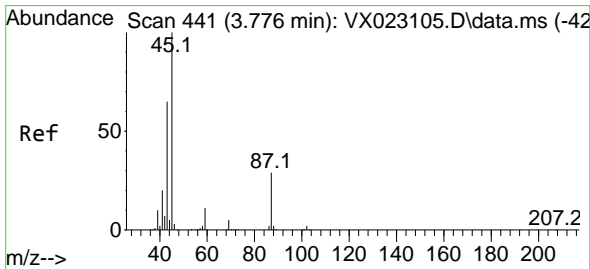
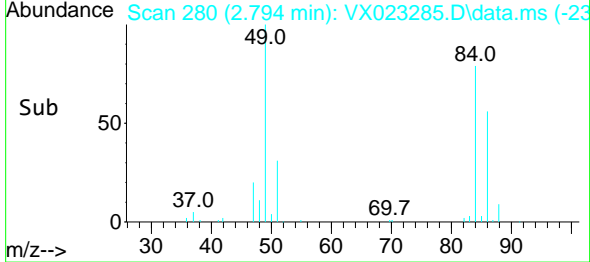
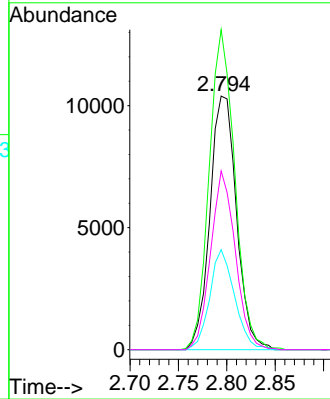
#20
 Methylene Chloride
 Concen: 7.838 ug/l
 RT: 2.794 min Scan# 280
 Delta R.T. 0.000 min
 Lab File: VX023285.D
 Acq: 14 Jul 2021 17:33

Instrument :
 MSVOA_X
 ClientSampled :

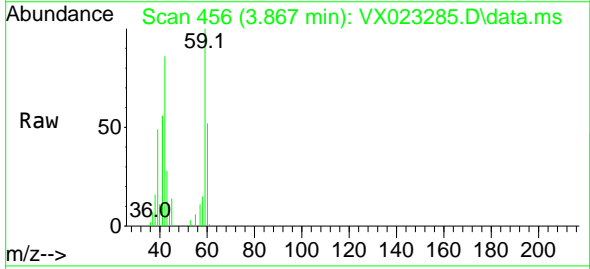


Tgt Ion: 84 Resp: 19826

Ion	Ratio	Lower	Upper
84	100		
49	126.2	88.6	132.8
51	39.4	27.0	40.6
86	70.4	50.3	75.5

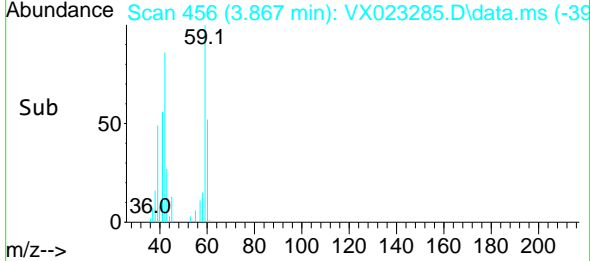
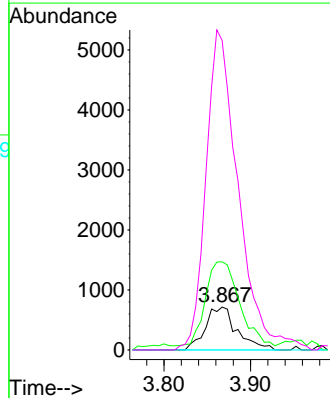


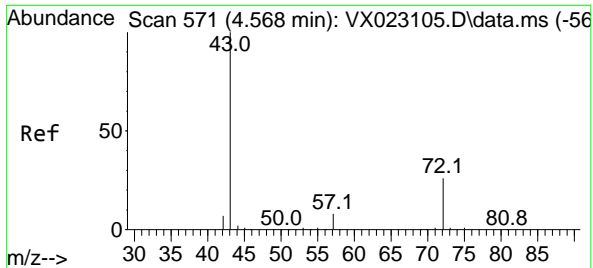
#22
 Diisopropyl ether
 Concen: 0.251 ug/l
 RT: 3.867 min Scan# 456
 Delta R.T. 0.091 min
 Lab File: VX023285.D
 Acq: 14 Jul 2021 17:33



Tgt Ion: 45 Resp: 1810

Ion	Ratio	Lower	Upper
45	100		
43	195.2	58.0	87.0#
87	0.0	25.4	38.0#
59	713.6	10.2	15.2#

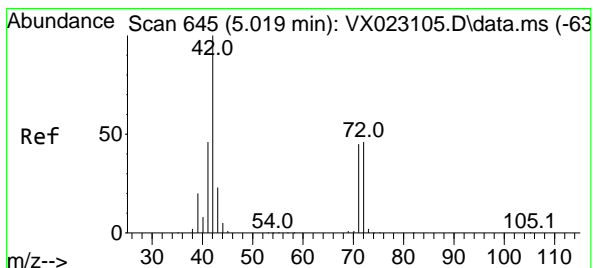
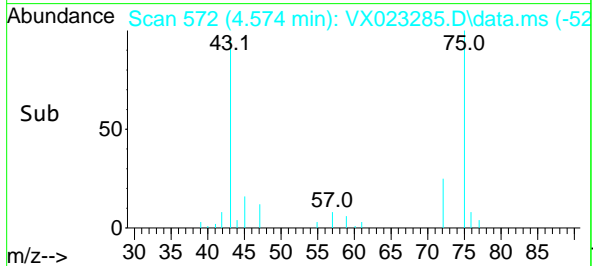
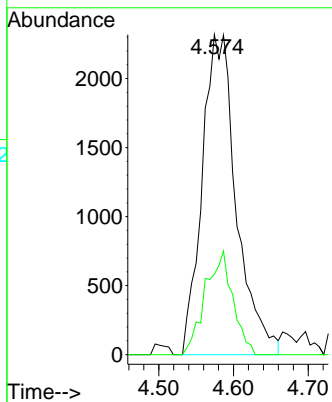
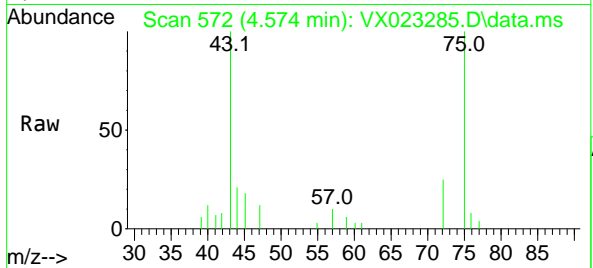




#25
 2-Butanone
 Concen: 4.166 ug/l
 RT: 4.574 min Scan# 572
 Delta R.T. 0.006 min
 Lab File: VX023285.D
 Acq: 14 Jul 2021 17:33

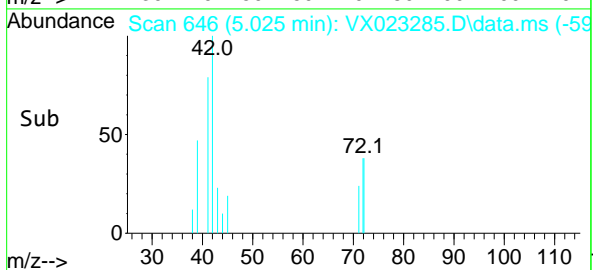
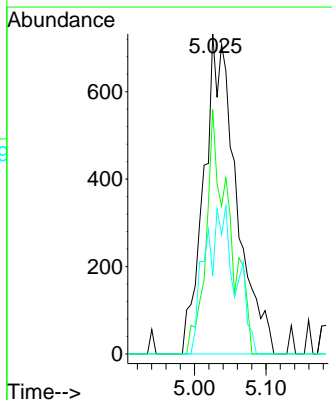
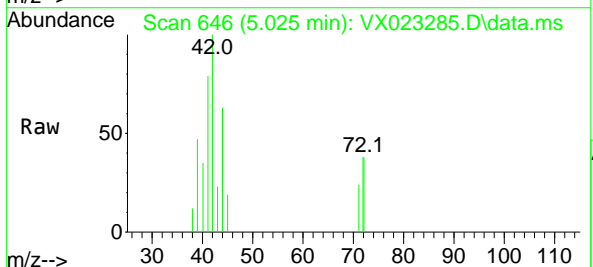
Instrument :
 MSVOA_X
 ClientSampled :

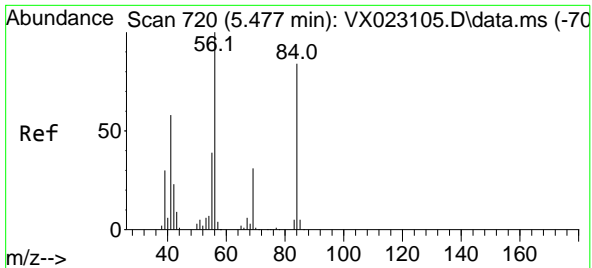
Tgt Ion: 43 Resp: 7380
 Ion Ratio Lower Upper
 43 100
 72 25.2 23.7 35.5



#29
 Tetrahydrofuran
 Concen: 2.030 ug/l
 RT: 5.025 min Scan# 646
 Delta R.T. 0.006 min
 Lab File: VX023285.D
 Acq: 14 Jul 2021 17:33

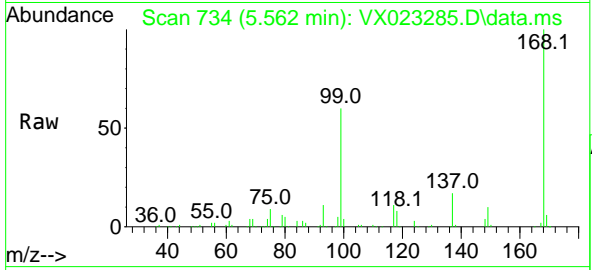
Tgt Ion: 42 Resp: 2312
 Ion Ratio Lower Upper
 42 100
 72 54.3 41.7 62.5
 71 34.9 38.4 57.6#



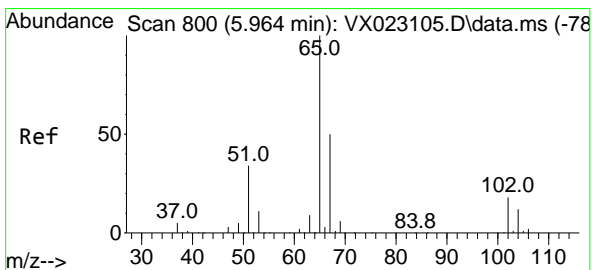
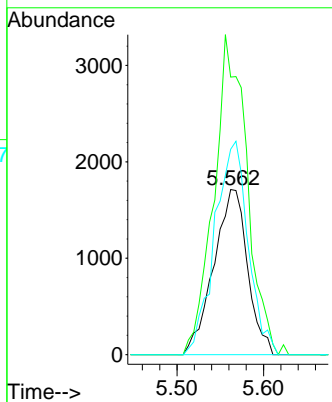
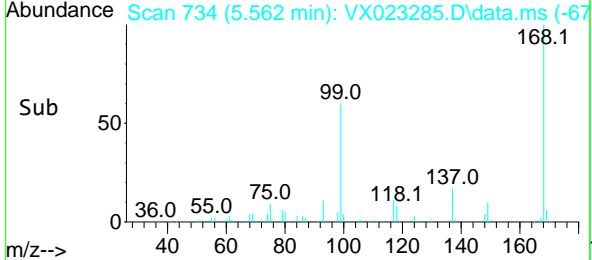


#31
 Cyclohexane
 Concen: 1.307 ug/l
 RT: 5.562 min Scan# 734
 Delta R.T. 0.085 min
 Lab File: VX023285.D
 Acq: 14 Jul 2021 17:33

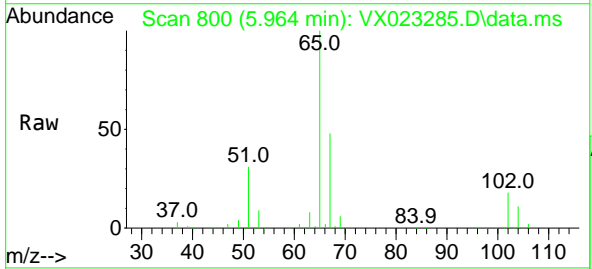
Instrument :
 MSVOA_X
 ClientSampled :



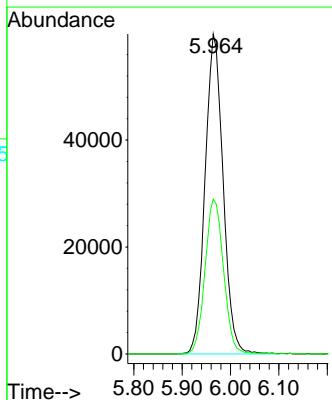
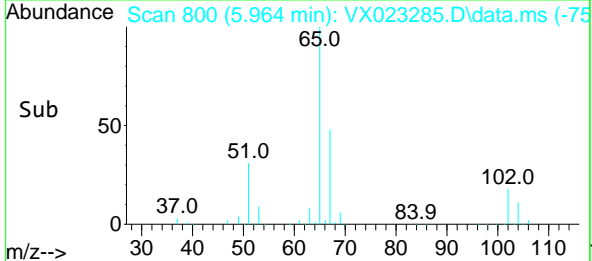
Tgt Ion: 56 Resp: 4648
 Ion Ratio Lower Upper
 56 100
 69 168.1 25.3 37.9#
 84 124.4 71.4 107.0#

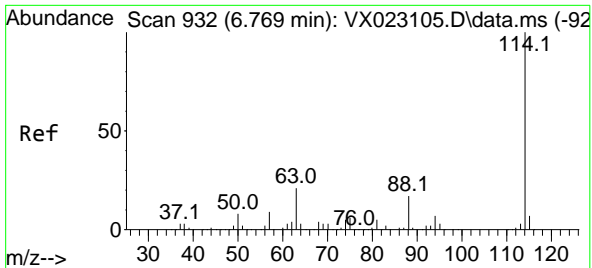


#33
 1,2-Dichloroethane-d4
 Concen: 52.131 ug/l
 RT: 5.964 min Scan# 800
 Delta R.T. 0.000 min
 Lab File: VX023285.D
 Acq: 14 Jul 2021 17:33



Tgt Ion: 65 Resp: 154800
 Ion Ratio Lower Upper
 65 100
 67 49.7 0.0 105.4



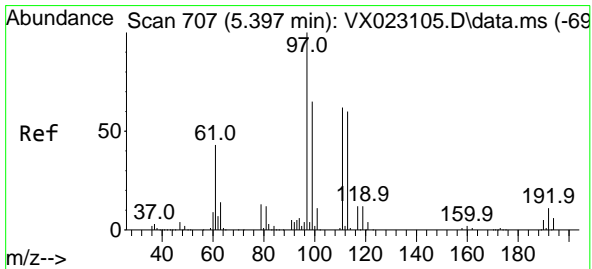
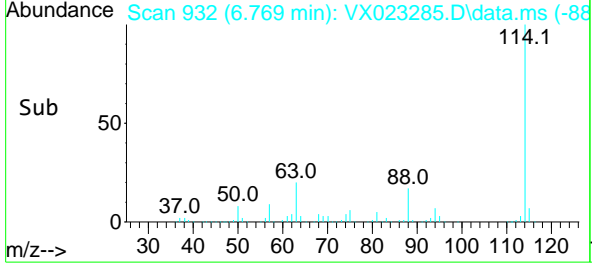
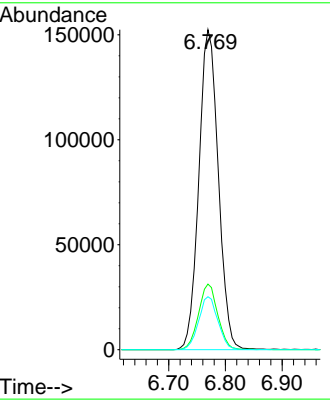
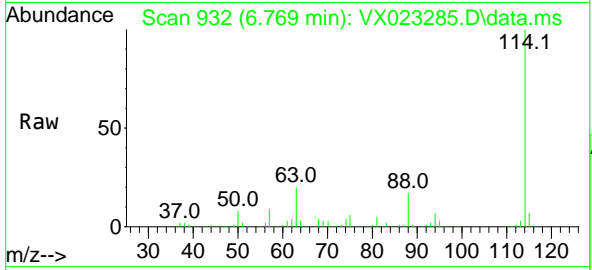


#34
 1,4-Difluorobenzene
 Concen: 50.000 ug/l
 RT: 6.769 min Scan# 932
 Delta R.T. 0.000 min
 Lab File: VX023285.D
 Acq: 14 Jul 2021 17:33

Instrument :
 MSVOA_X
 ClientSampled :

Tgt Ion:114 Resp: 363190

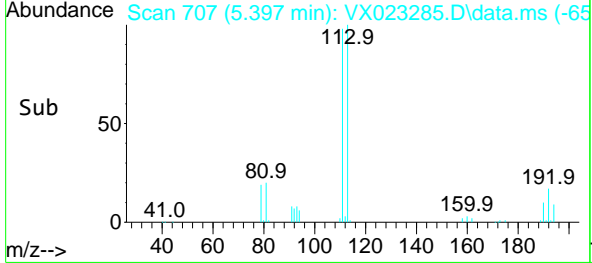
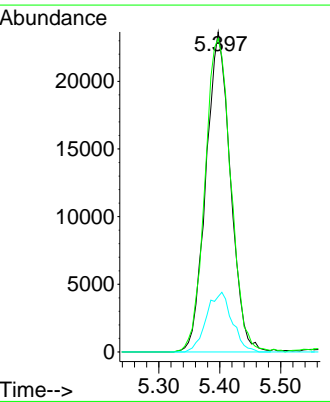
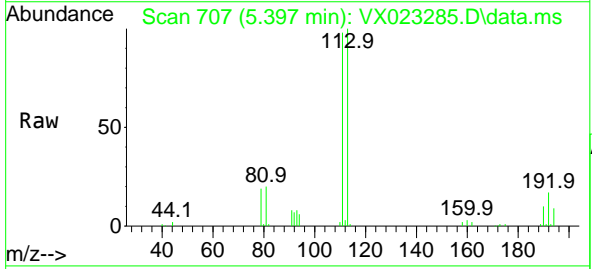
Ion	Ratio	Lower	Upper
114	100		
63	20.5	0.0	40.8
88	16.5	0.0	32.8

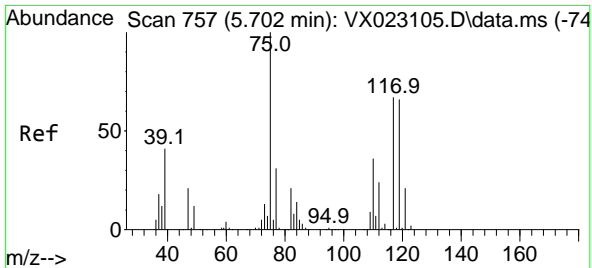


#35
 Dibromofluoromethane
 Concen: 28.156 ug/l
 RT: 5.397 min Scan# 707
 Delta R.T. 0.000 min
 Lab File: VX023285.D
 Acq: 14 Jul 2021 17:33

Tgt Ion:113 Resp: 66034

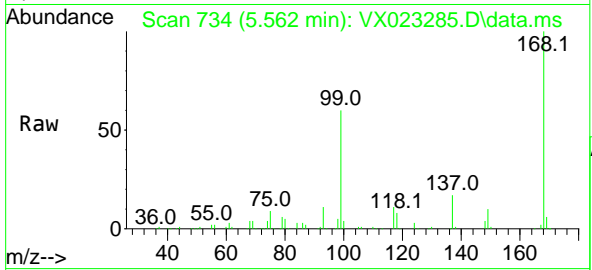
Ion	Ratio	Lower	Upper
113	100		
111	103.4	81.9	122.9
192	19.5	16.7	25.1





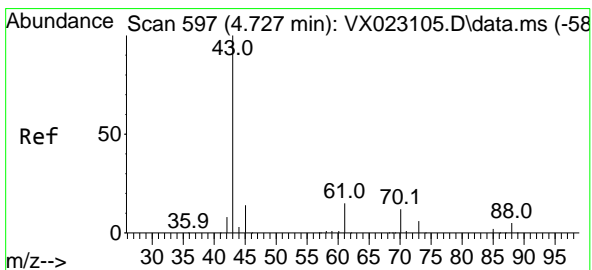
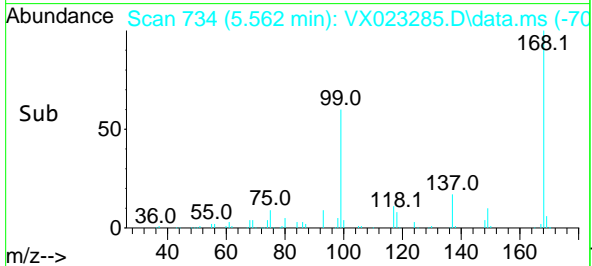
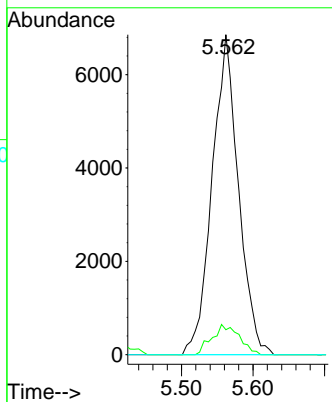
#36
 1,1-Dichloropropene
 Concen: 5.410 ug/l
 RT: 5.562 min Scan# 734
 Delta R.T. -0.140 min
 Lab File: VX023285.D
 Acq: 14 Jul 2021 17:33

Instrument :
 MSVOA_X
 ClientSampled :

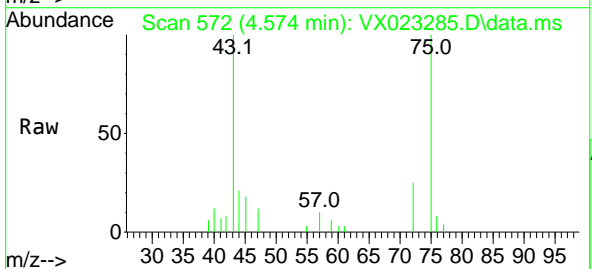


Tgt Ion: 75 Resp: 17515

Ion	Ratio	Lower	Upper
75	100		
110	9.8	18.1	54.4#
77	0.0	25.3	37.9#

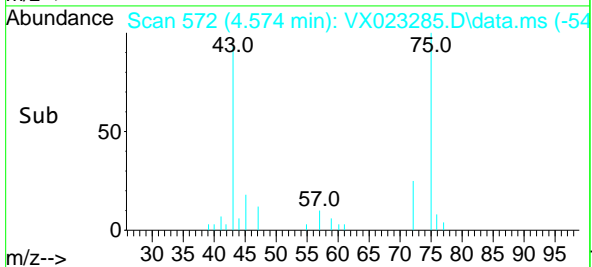
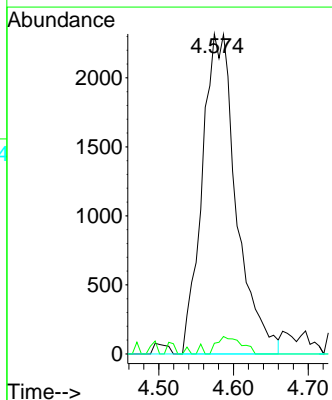


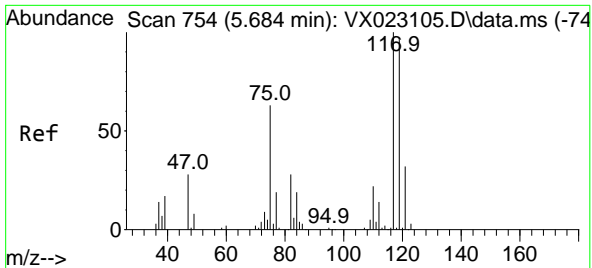
#37
 Ethyl Acetate
 Concen: 2.089 ug/l
 RT: 4.574 min Scan# 572
 Delta R.T. -0.153 min
 Lab File: VX023285.D
 Acq: 14 Jul 2021 17:33



Tgt Ion: 43 Resp: 7380

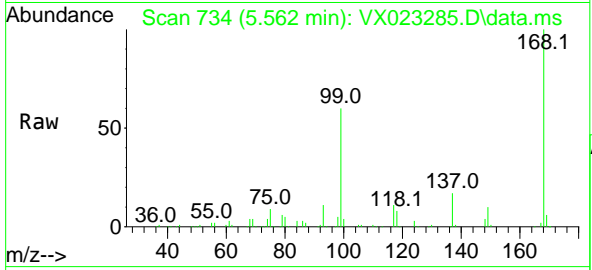
Ion	Ratio	Lower	Upper
43	100		
61	3.9	12.8	19.2#
70	0.0	10.5	15.7#



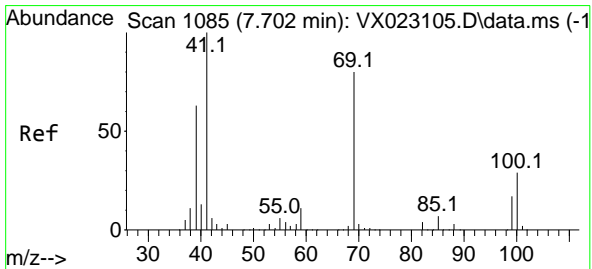
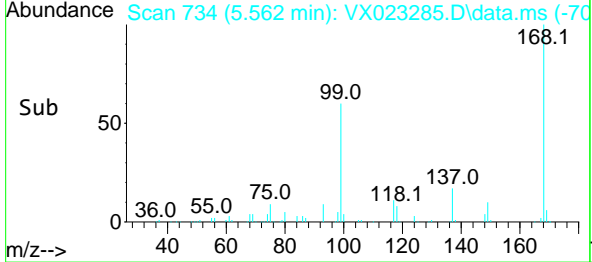
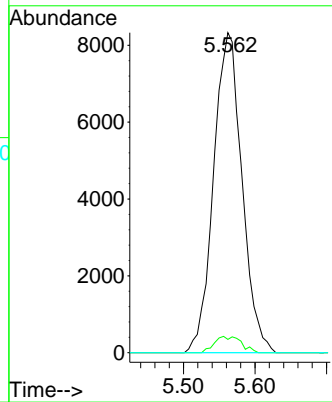


#38
 Carbon Tetrachloride
 Concen: 6.790 ug/l
 RT: 5.562 min Scan# 734
 Delta R.T. -0.122 min
 Lab File: VX023285.D
 Acq: 14 Jul 2021 17:33

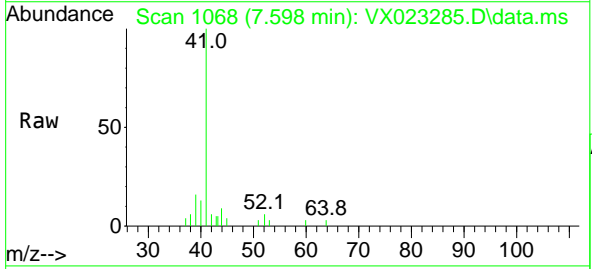
Instrument :
 MSVOA_X
 ClientSampled :



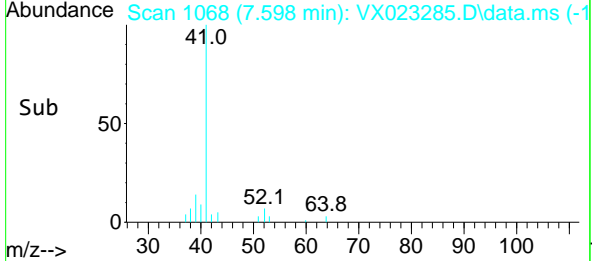
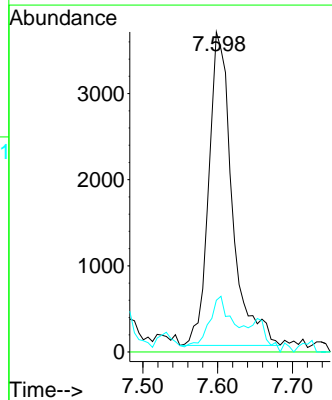
Tgt Ion: 117 Resp: 22946
 Ion Ratio Lower Upper
 117 100
 119 4.2 76.2 114.2#
 121 0.0 24.8 37.2#

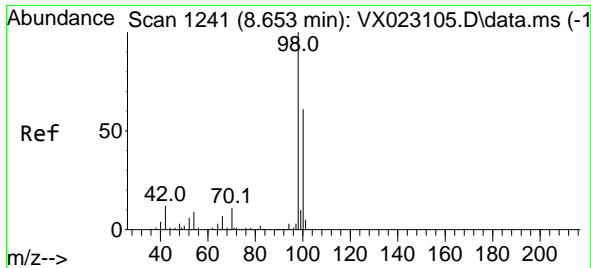


#48
 Methyl methacrylate
 Concen: 2.754 ug/l
 RT: 7.598 min Scan# 1068
 Delta R.T. -0.104 min
 Lab File: VX023285.D
 Acq: 14 Jul 2021 17:33



Tgt Ion: 41 Resp: 7939
 Ion Ratio Lower Upper
 41 100
 69 0.0 76.0 114.0#
 39 20.5 44.6 67.0#

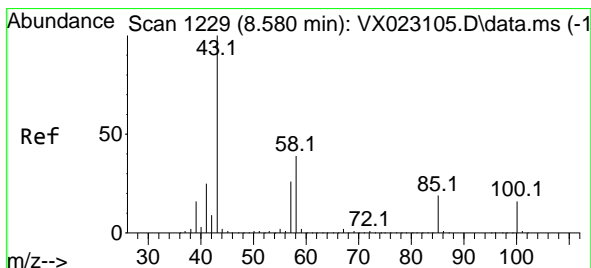
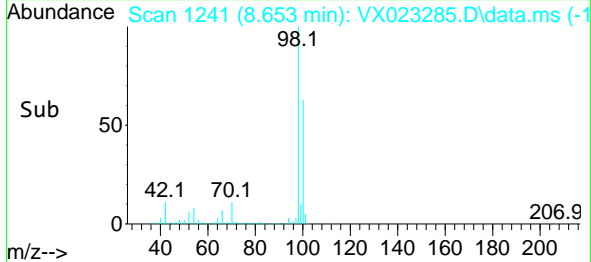
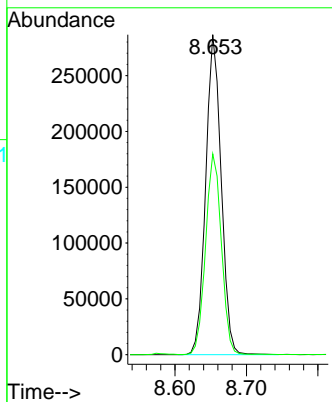
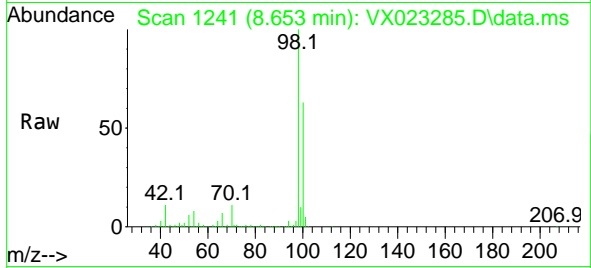




#50
 Toluene-d8
 Concen: 49.258 ug/l
 RT: 8.653 min Scan# 1241
 Delta R.T. -0.000 min
 Lab File: VX023285.D
 Acq: 14 Jul 2021 17:33

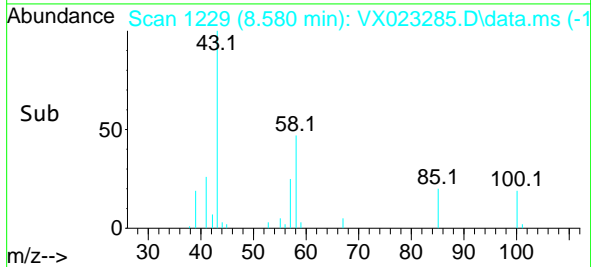
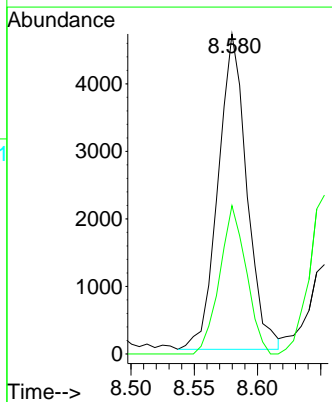
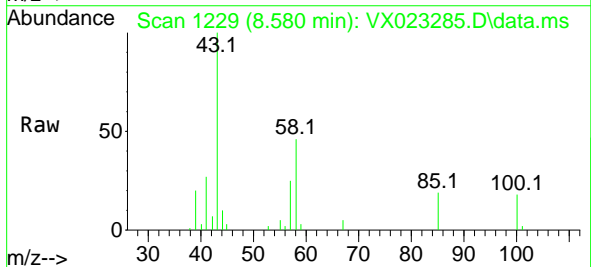
Instrument :
 MSVOA_X
 ClientSampled :

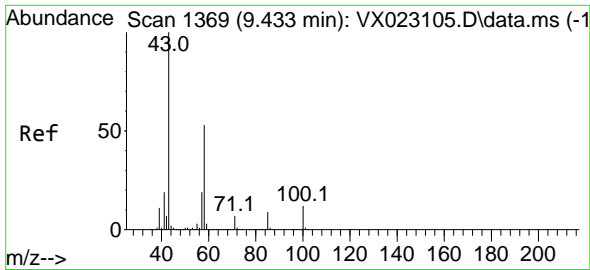
Tgt Ion: 98 Resp: 430943
 Ion Ratio Lower Upper
 98 100
 100 64.0 51.9 77.9



#51
 4-Methyl-2-Pentanone
 Concen: 2.027 ug/l
 RT: 8.580 min Scan# 1229
 Delta R.T. -0.000 min
 Lab File: VX023285.D
 Acq: 14 Jul 2021 17:33

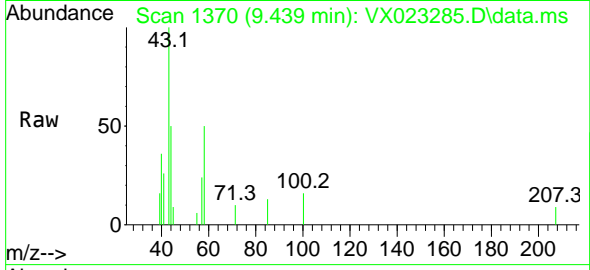
Tgt Ion: 43 Resp: 7379
 Ion Ratio Lower Upper
 43 100
 58 43.6 35.4 53.0



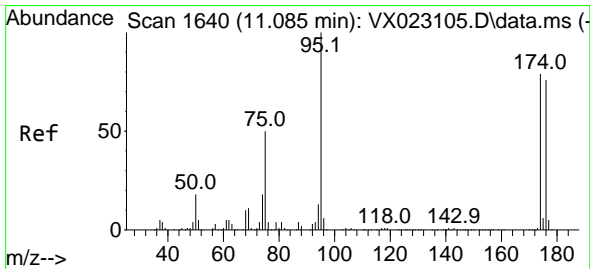
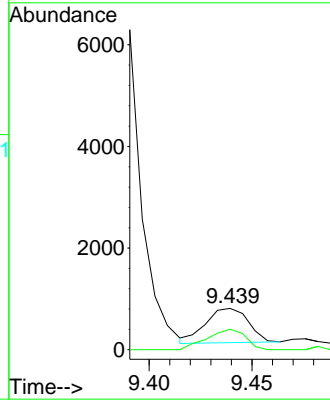
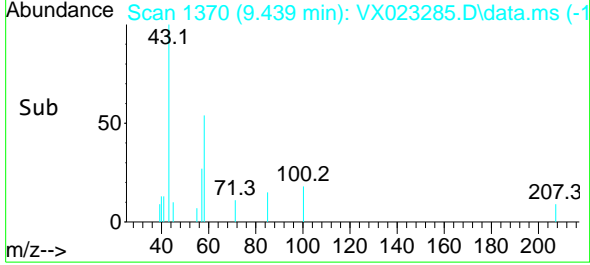


#59
 2-Hexanone
 Concen: 0.352 ug/l
 RT: 9.439 min Scan# 1370
 Delta R.T. 0.006 min
 Lab File: VX023285.D
 Acq: 14 Jul 2021 17:33

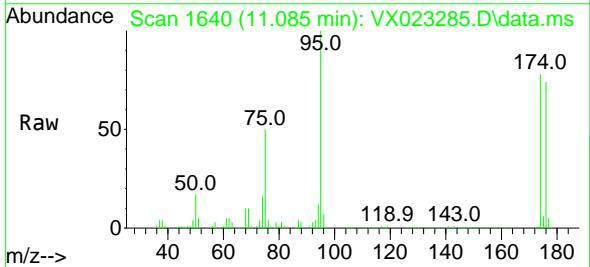
Instrument :
 MSVOA_X
 ClientSampled :



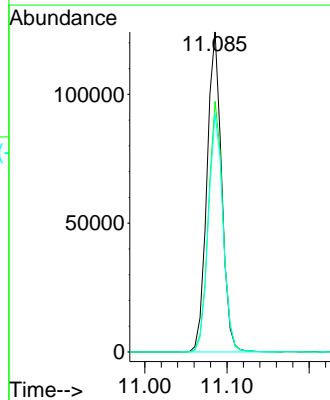
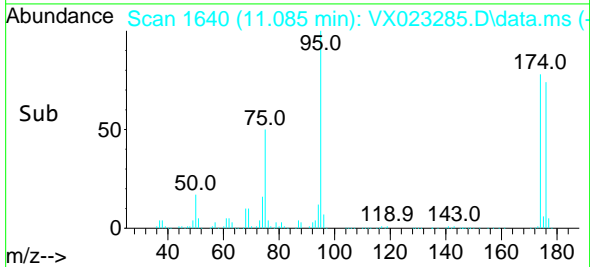
Tgt Ion: 43 Resp: 982
 Ion Ratio Lower Upper
 43 100
 58 53.1 30.9 92.8

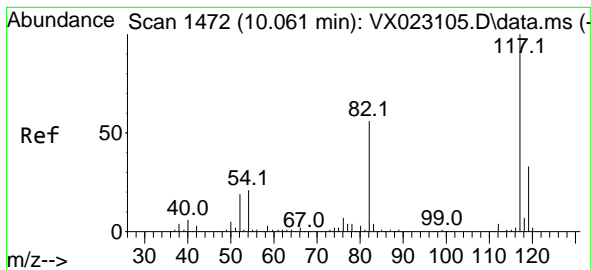


#62
 4-Bromofluorobenzene
 Concen: 45.466 ug/l
 RT: 11.085 min Scan# 1640
 Delta R.T. 0.000 min
 Lab File: VX023285.D
 Acq: 14 Jul 2021 17:33



Tgt Ion: 95 Resp: 153561
 Ion Ratio Lower Upper
 95 100
 174 78.1 0.0 154.6
 176 74.4 0.0 155.8

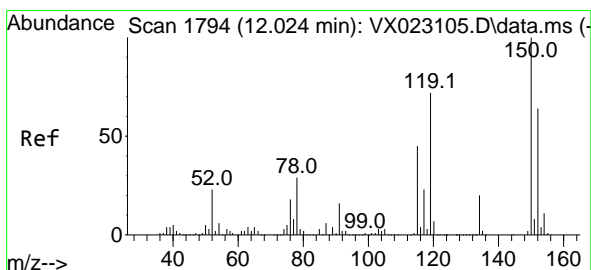
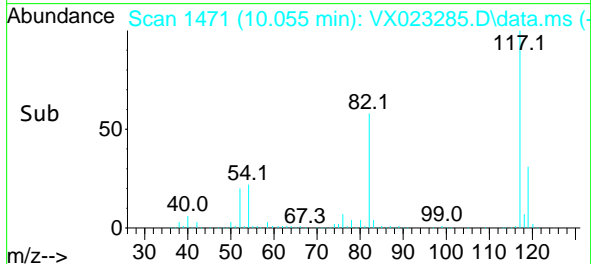
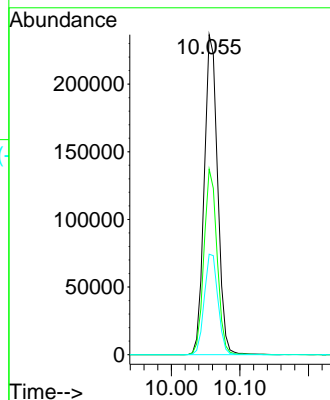
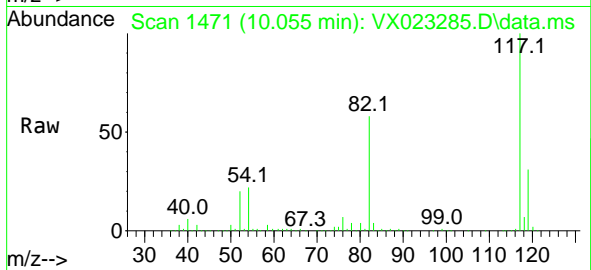




#63
 Chlorobenzene-d5
 Concen: 50.000 ug/l
 RT: 10.055 min Scan# 1471
 Delta R.T. -0.006 min
 Lab File: VX023285.D
 Acq: 14 Jul 2021 17:33

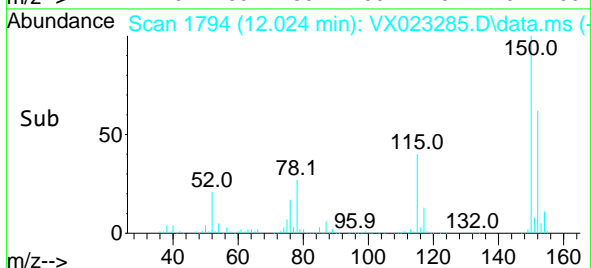
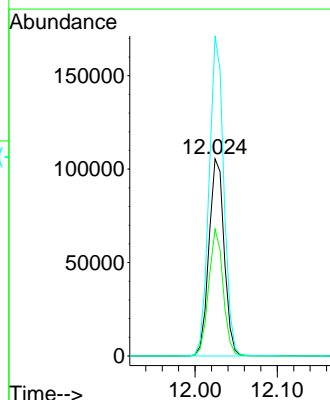
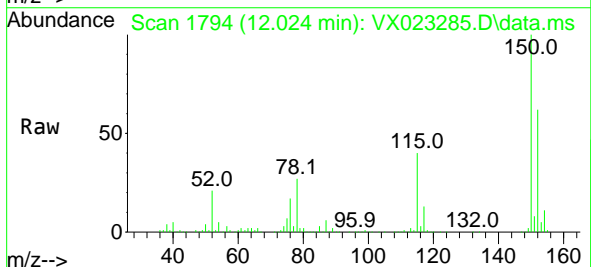
Instrument :
 MSVOA_X
 ClientSampled :

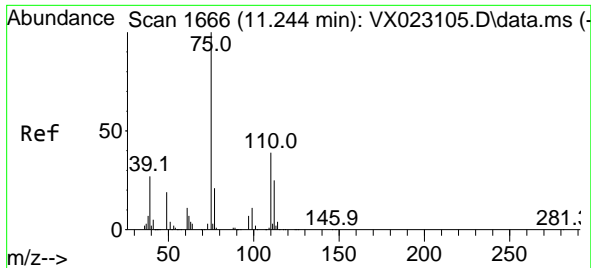
Tgt Ion:117 Resp: 321659
 Ion Ratio Lower Upper
 117 100
 82 58.0 47.4 71.2
 119 31.4 26.6 39.8



#72
 1,4-Dichlorobenzene-d4
 Concen: 50.000 ug/l
 RT: 12.024 min Scan# 1794
 Delta R.T. 0.000 min
 Lab File: VX023285.D
 Acq: 14 Jul 2021 17:33

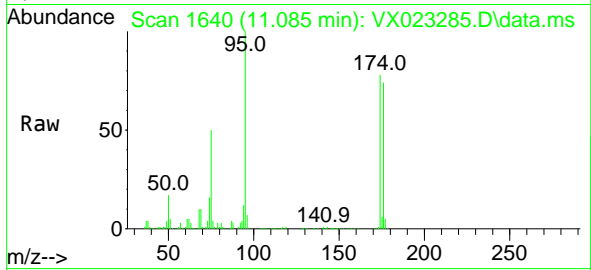
Tgt Ion:152 Resp: 135698
 Ion Ratio Lower Upper
 152 100
 115 61.0 41.1 123.3
 150 156.4 0.0 349.0



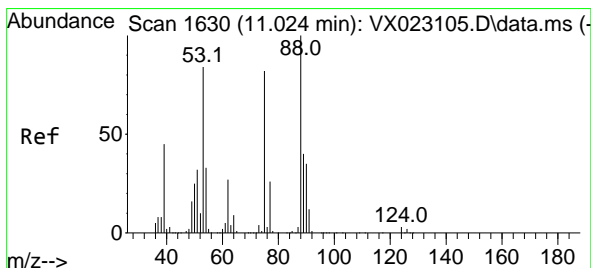
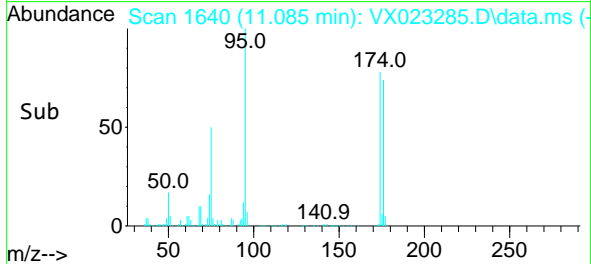
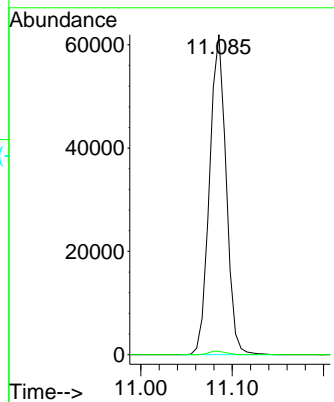


#76
 1,2,3-Trichloropropane
 Concen: 28.544 ug/l
 RT: 11.085 min Scan# 1640
 Delta R.T. -0.159 min
 Lab File: VX023285.D
 Acq: 14 Jul 2021 17:33

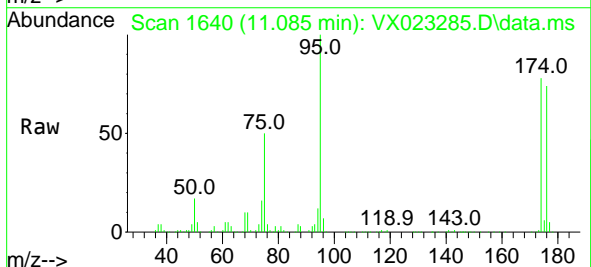
Instrument :
 MSVOA_X
 ClientSampled :



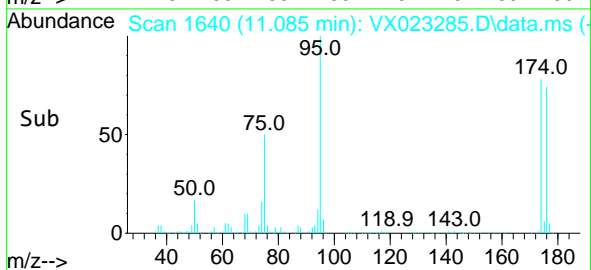
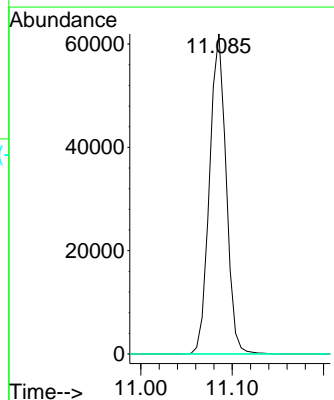
Tgt Ion: 75 Resp: 77946
 Ion Ratio Lower Upper
 75 100
 77 1.1 19.1 57.5#

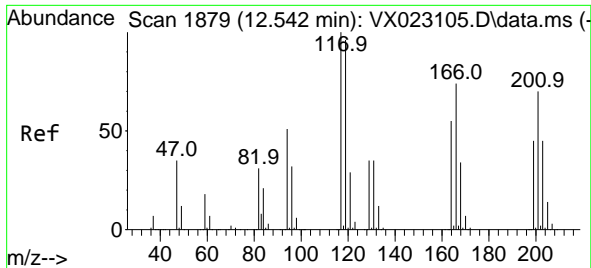


#81
 trans-1,4-Dichloro-2-butene
 Concen: 76.873 ug/l
 RT: 11.085 min Scan# 1640
 Delta R.T. 0.061 min
 Lab File: VX023285.D
 Acq: 14 Jul 2021 17:33



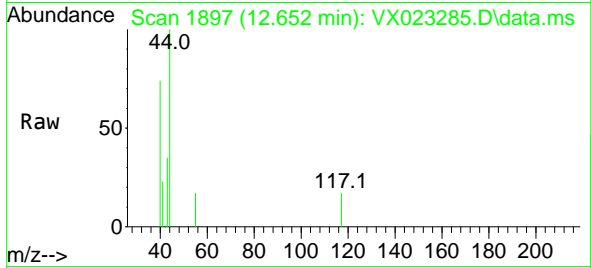
Tgt Ion: 75 Resp: 77946
 Ion Ratio Lower Upper
 75 100
 53 0.0 74.5 111.7#
 89 0.0 37.9 56.9#



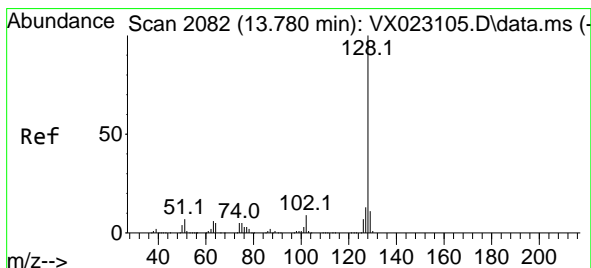
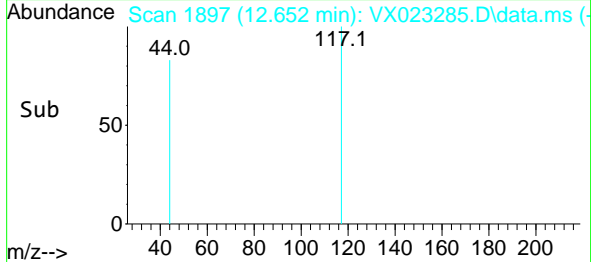
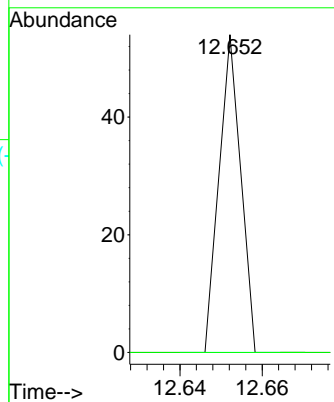


#90
 Hexachloroethane
 Concen: 3.009 ug/l
 RT: 12.652 min Scan# 1897
 Delta R.T. 0.110 min
 Lab File: VX023285.D
 Acq: 14 Jul 2021 17:33

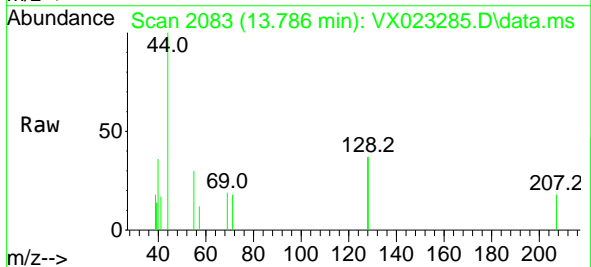
Instrument :
 MSVOA_X
 ClientSampled :



Tgt Ion:117 Resp: 20
 Ion Ratio Lower Upper
 117 100
 201 0.0 40.4 121.2#



#95
 Naphthalene
 Concen: 1.317 ug/l
 RT: 13.786 min Scan# 2083
 Delta R.T. 0.006 min
 Lab File: VX023285.D
 Acq: 14 Jul 2021 17:33



Tgt Ion:128 Resp: 435
 Ion Ratio Lower Upper
 128 100
 127 5.3 10.3 15.5#
 129 0.0 8.8 13.2#

