

Data Path : Z:\VOASRV\HPCHEM1\MSVOA X\DATA\VX071618\
 Data File : VX003403.D
 Acq On : 16 Jul 2018 21:26
 Operator : JC/MD
 Sample : PB111123ZHE#11
 Misc : 5.0mL/MSVOA X/WATER
 ALS Vial : 17 Sample Multiplier: 1

Instrument :
 MSVOA_X
 Client Sampled :
 PB111123ZHE#11

Quant Time: Jul 17 01:59:38 2018
 Quant Method : Z:\VOASRV\HPCHEM1\MSVOA_X\METHOD\82X071618W.M
 Quant Title : SW846 8260
 QLast Update : Mon Jul 16 13:15:28 2018
 Response via : Initial Calibration

Internal Standards	R.T.	QIon	Response	Conc	Units	Dev(Min)
1) Pentafluorobenzene	5.67	168	240980	50.00	ug/l	0.00
34) 1,4-Difluorobenzene	6.87	114	359868	50.00	ug/l	0.00
63) Chlorobenzene-d5	10.12	117	343718	50.00	ug/l	0.00
72) 1,4-Dichlorobenzene-d4	12.09	152	191963	50.00	ug/l	0.00

System Monitoring Compounds

33) 1,2-Dichloroethane-d4	6.07	65	162289	51.43	ug/l	0.00
Spiked Amount	50.000		Recovery	=	102.86%	
35) Dibromofluoromethane	5.51	113	136637	46.93	ug/l	0.00
Spiked Amount	50.000		Recovery	=	93.86%	
50) Toluene-d8	8.72	98	593721	55.25	ug/l	0.00
Spiked Amount	50.000		Recovery	=	110.50%	
62) 4-Bromofluorobenzene	11.14	95	182519	47.58	ug/l	0.00
Spiked Amount	50.000		Recovery	=	95.16%	

Target Compounds

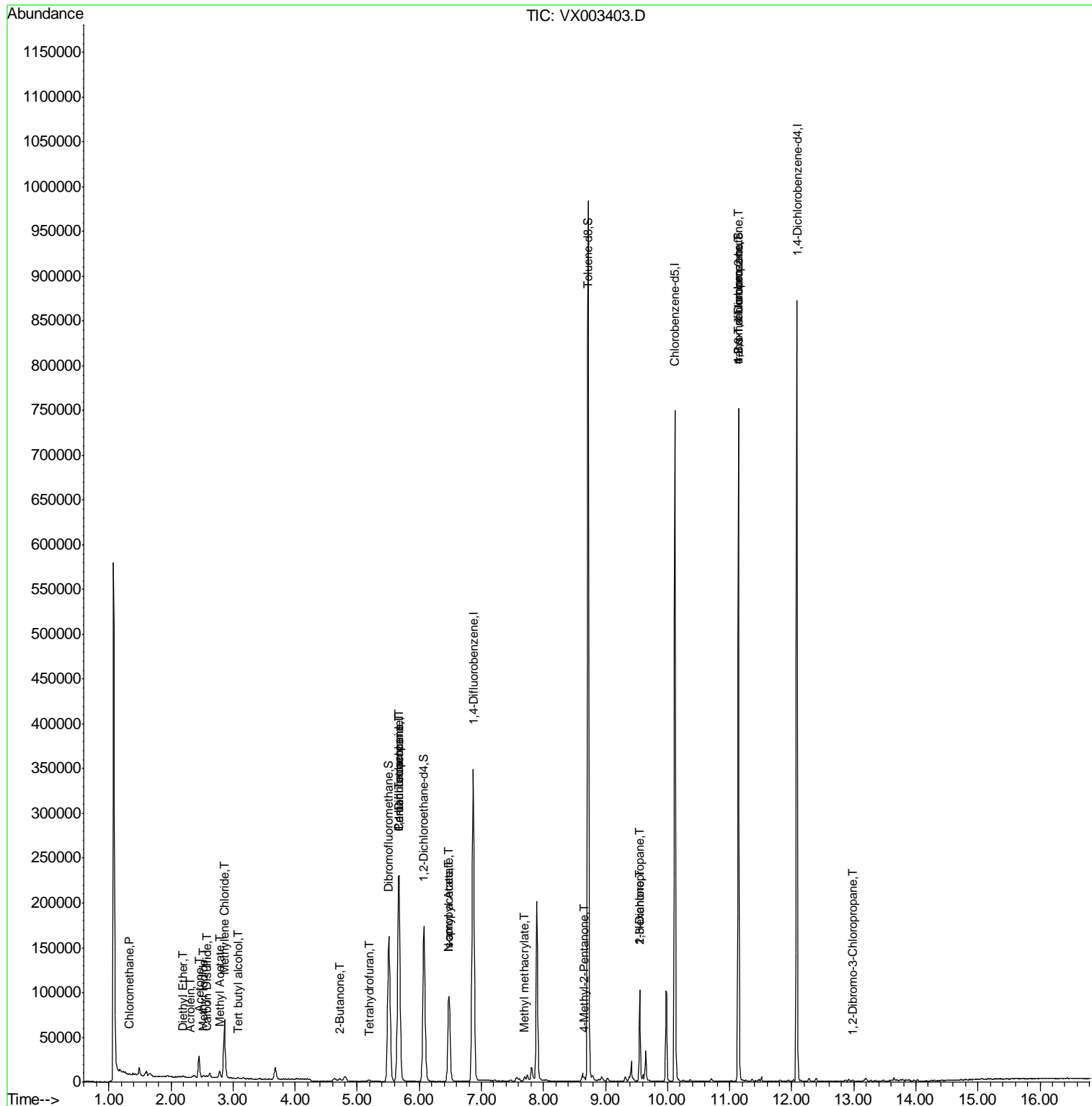
						Qvalue
3) Chloromethane	1.33	50	965	0.33	ug/l	# 80
5) Bromomethane	1.65	94	2741	Below	Cal	95
6) Chloroethane	1.78	64	1854	Below	Cal	# 69
8) Diethyl Ether	2.19	74	487	0.27	ug/l	66
10) Methyl Iodide	2.52	142	2775	0.97	ug/l	# 94
11) Tert butyl alcohol	3.07	59	966	1.36	ug/l	# 71
13) Acrolein	2.30	56	375	1.10	ug/l	# 74
16) Acetone	2.45	43	27075	20.63	ug/l	91
17) Carbon Disulfide	2.57	76	1712	0.25	ug/l	99
18) Methyl Acetate	2.78	43	9337	2.18	ug/l	91
20) Methylene Chloride	2.86	84	31034	10.82	ug/l	89
25) 2-Butanone	4.73	43	4545	2.21	ug/l	95
29) Tetrahydrofuran	5.19	42	1347	1.03	ug/l	# 86
36) 1,1-Dichloropropene	5.67	75	16036	4.40	ug/l	# 50
38) Carbon Tetrachloride	5.67	117	21839	5.89	ug/l	# 16
43) Isopropyl Acetate	6.48	43	124853	20.14	ug/l	94
48) Methyl methacrylate	7.70	41	7062	2.23	ug/l	# 22
51) 4-Methyl-2-Pentanone	8.66	43	1954	0.48	ug/l	# 53
57) 1,3-Dichloropropane	9.55	76	977	0.21	ug/l	# 46
59) 2-Hexanone	9.55	43	11274	3.60	ug/l	# 62
74) N-amyl acetate	6.48	43	124853	21.12	ug/l	# 94
76) 1,2,3-Trichloropropane	11.14	75	88821	25.56	ug/l	# 33
81) trans-1,4-Dichloro-2-buten	11.14	75	88821	83.03	ug/l	# 7
92) 1,2-Dibromo-3-Chloropropan	12.99	75	228	0.27	ug/l	# 1

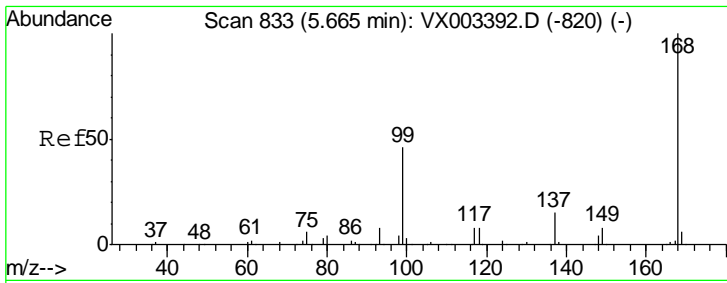
(#) = qualifier out of range (m) = manual integration (+) = signals summed

Data Path : Z:\VOASRV\HPCHEM1\MSVOA X\DATA\VX071618\
 Data File : VX003403.D
 Acq On : 16 Jul 2018 21:26
 Operator : JC/MD
 Sample : PB111123ZHE#11
 Misc : 5.0mL/MSVOA X/WATER
 ALS Vial : 17 Sample Multiplier: 1

Instrument :
 MSVOA_X
 ClientSampleId :
 PB111123ZHE#11

Quant Time: Jul 17 01:59:38 2018
 Quant Method : Z:\VOASRV\HPCHEM1\MSVOA_X\METHOD\82X071618W.M
 Quant Title : SW846 8260
 QLast Update : Mon Jul 16 13:15:28 2018
 Response via : Initial Calibration

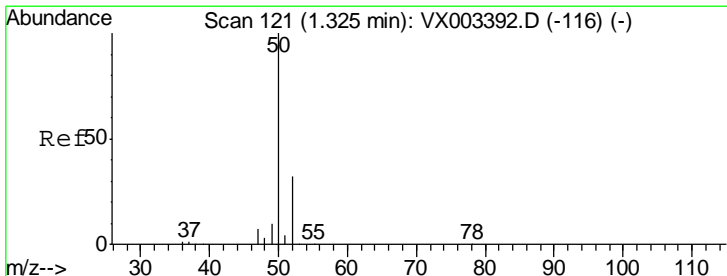
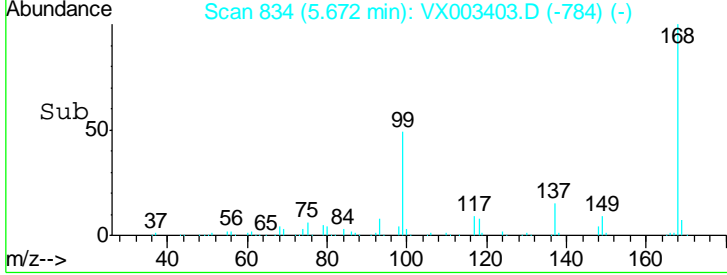
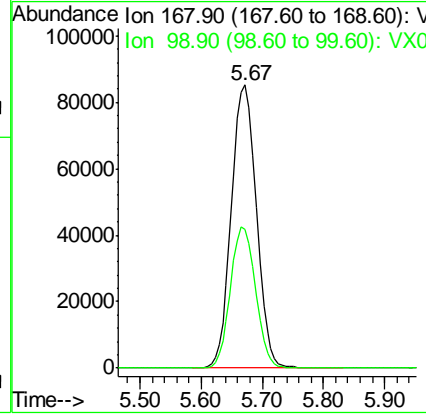
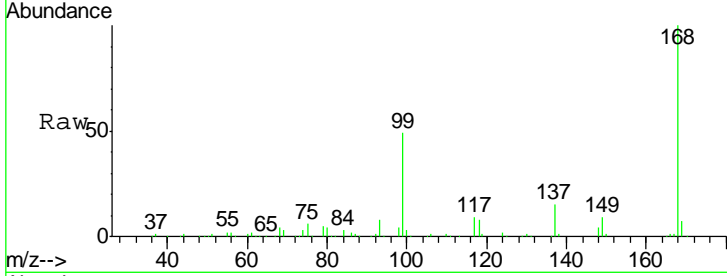




#1
 Pentafluorobenzene
 Concen: 50.00 ug/l
 RT: 5.67 min Scan# 834
 Delta R.T. 0.01 min
 Lab File: VX003403.D
 Acq: 16 Jul 2018 21:26

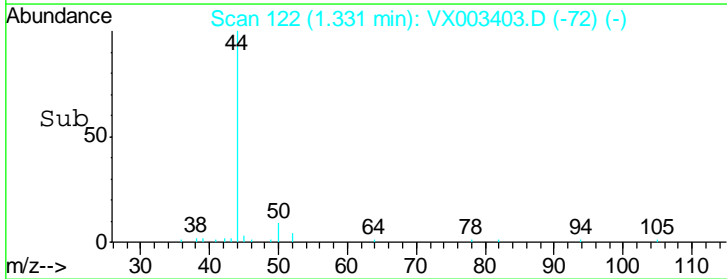
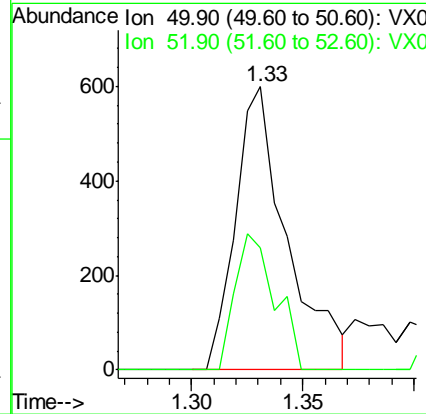
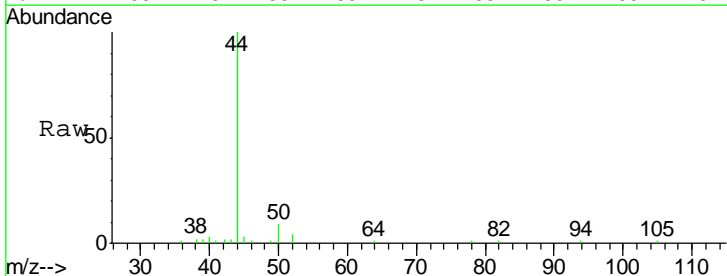
Instrument :
 MSVOA_X
 ClientSampleID :
 PB111123ZHE#11

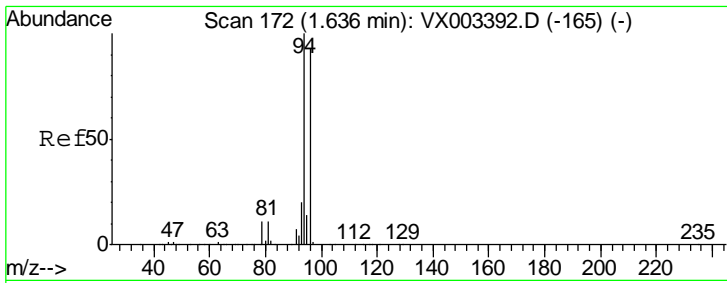
Tgt Ion: 168 Resp: 240980
 Ion Ratio Lower Upper
 168 100
 99 49.1 39.3 58.9



#3
 Chloromethane
 Concen: 0.33 ug/l
 RT: 1.33 min Scan# 122
 Delta R.T. 0.01 min
 Lab File: VX003403.D
 Acq: 16 Jul 2018 21:26

Tgt Ion: 50 Resp: 965
 Ion Ratio Lower Upper
 50 100
 52 43.1 25.7 38.5#

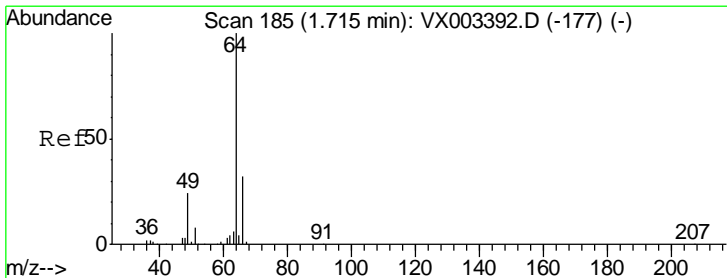
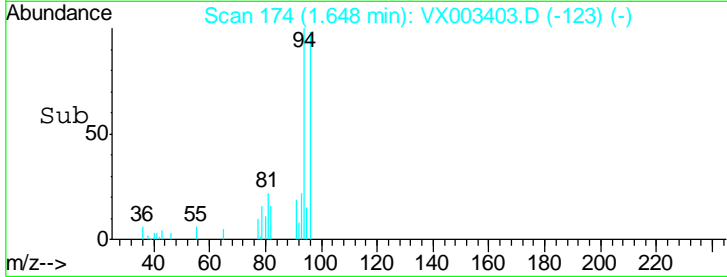
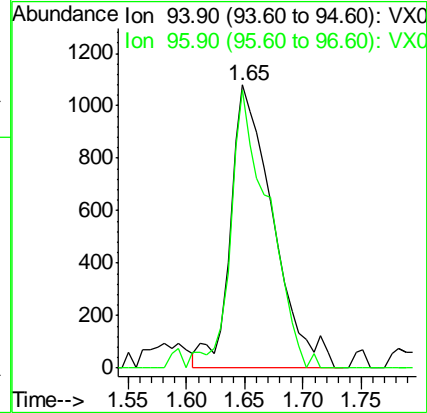
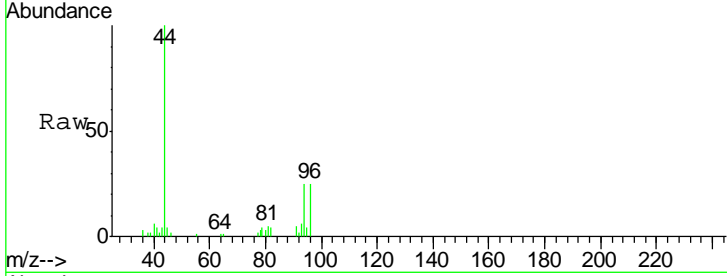




#5
 Bromomethane
 Concen: Below Cal
 RT: 1.65 min Scan# 174
 Delta R.T. 0.01 min
 Lab File: VX003403.D
 Acq: 16 Jul 2018 21:26

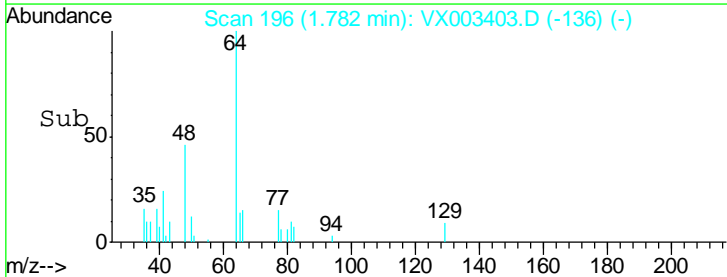
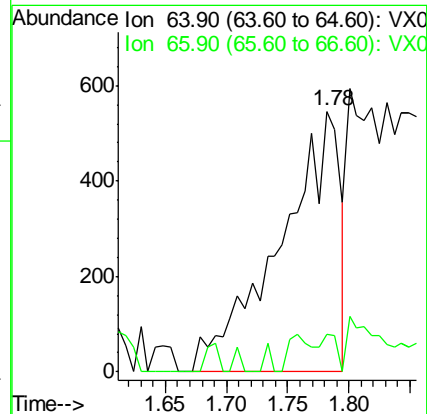
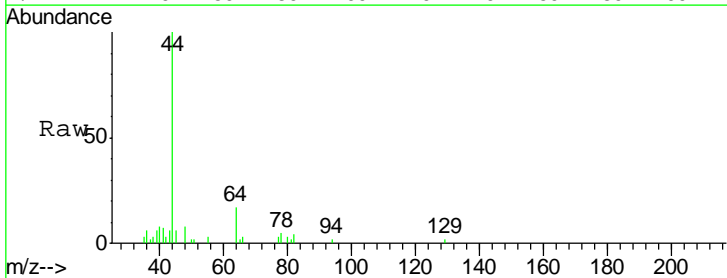
Instrument :
 MSVOA_X
 ClientSampled :
 PB111123ZHE#11

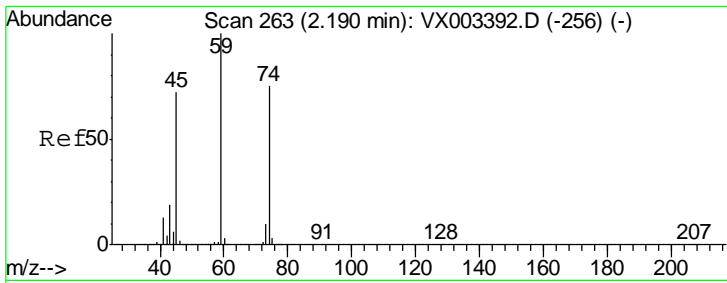
Tgt Ion: 94 Resp: 2741
 Ion Ratio Lower Upper
 94 100
 96 98.4 74.9 112.3



#6
 Chloroethane
 Concen: Below Cal
 RT: 1.78 min Scan# 196
 Delta R.T. 0.07 min
 Lab File: VX003403.D
 Acq: 16 Jul 2018 21:26

Tgt Ion: 64 Resp: 1854
 Ion Ratio Lower Upper
 64 100
 66 14.6 25.5 38.3#

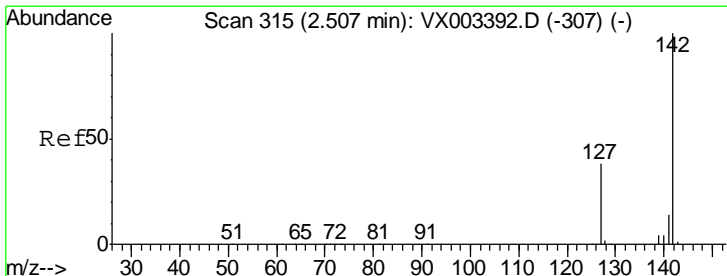
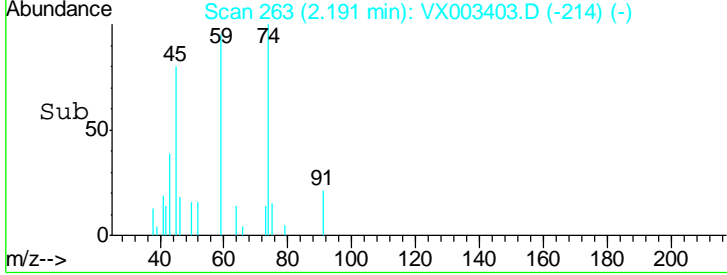
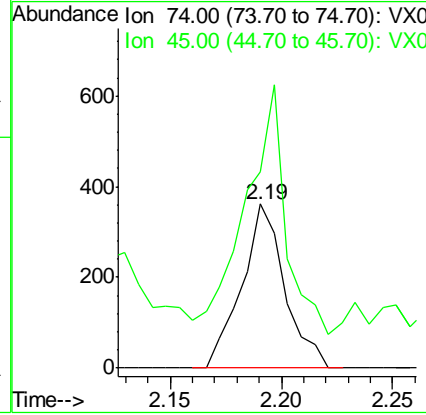
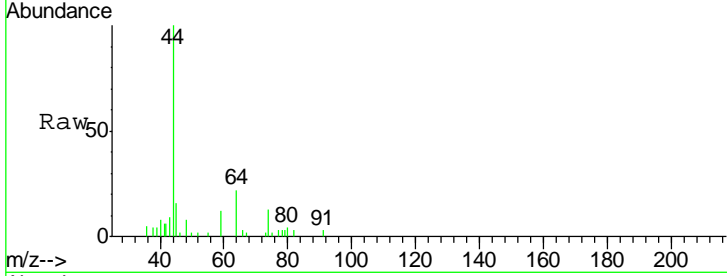




#8
 Diethyl Ether
 Concen: 0.27 ug/l
 RT: 2.19 min Scan# 263
 Delta R.T. 0.00 min
 Lab File: VX003403.D
 Acq: 16 Jul 2018 21:26

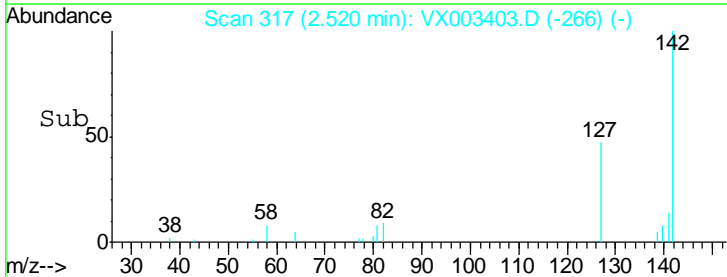
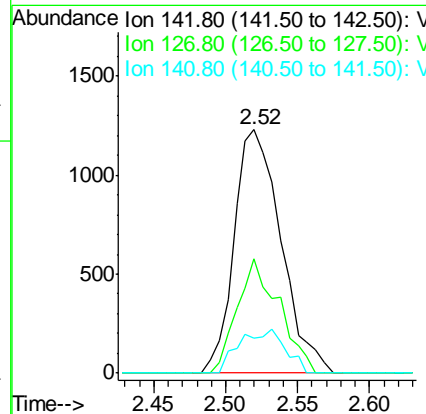
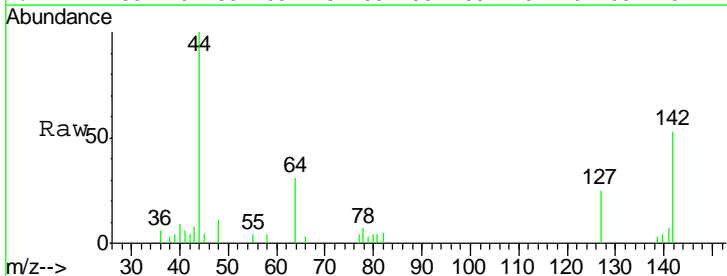
Instrument : MSVOA_X
 ClientSampled : PB111123ZHE#11

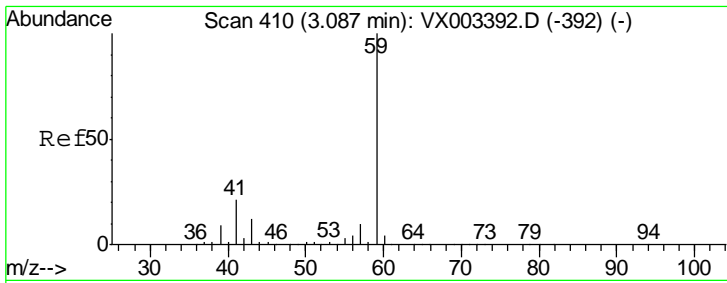
Tgt Ion	Resp	Lower	Upper
74	100		
45	141.1	53.1	159.4



#10
 Methyl Iodide
 Concen: 0.97 ug/l
 RT: 2.52 min Scan# 317
 Delta R.T. 0.01 min
 Lab File: VX003403.D
 Acq: 16 Jul 2018 21:26

Tgt Ion	Resp	Lower	Upper
142	100		
127	42.0	36.6	55.0
141	17.6	11.3	16.9#

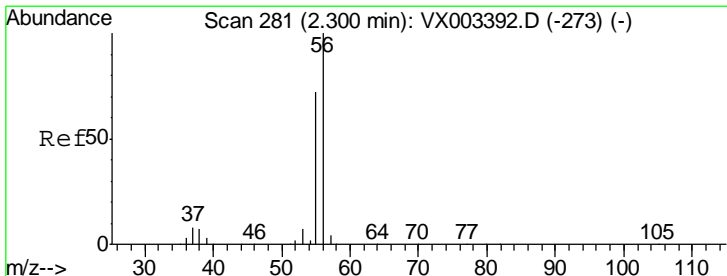
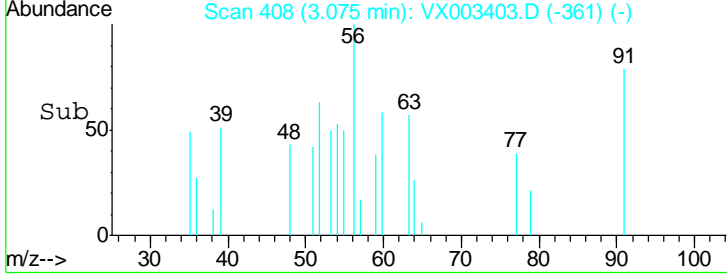
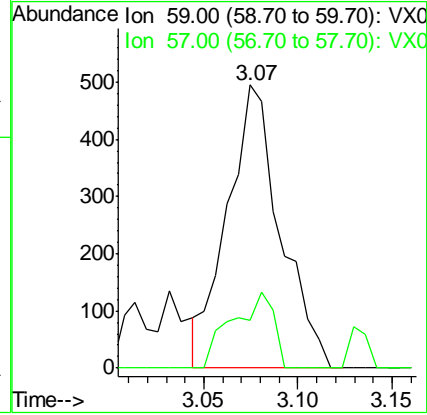
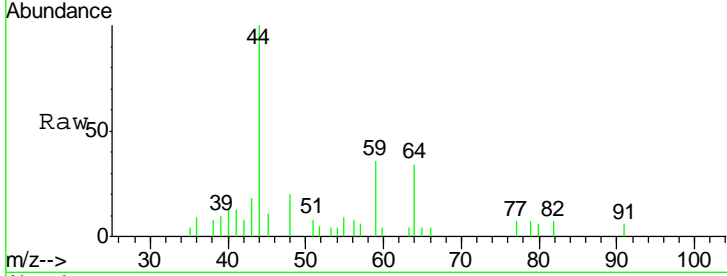




#11
 Tert butyl alcohol
 Concen: 1.36 ug/l
 RT: 3.07 min Scan# 408
 Delta R.T. -0.01 min
 Lab File: VX003403.D
 Acq: 16 Jul 2018 21:26

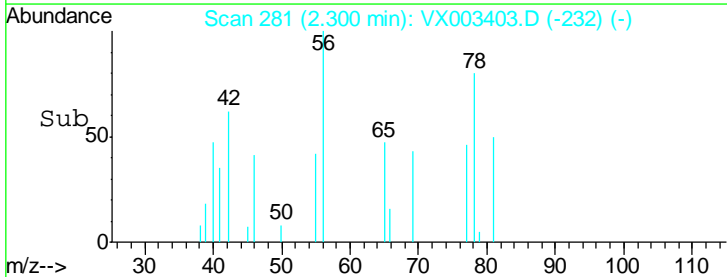
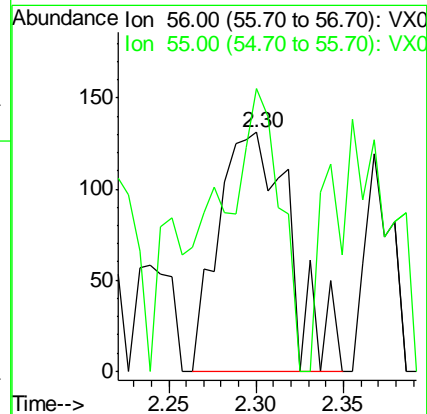
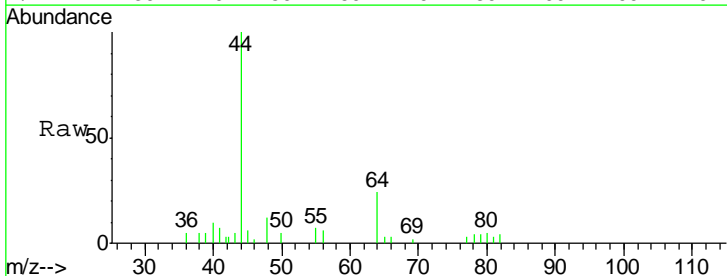
Instrument :
 MSVOA_X
 ClientSampled :
 PB111123ZHE#11

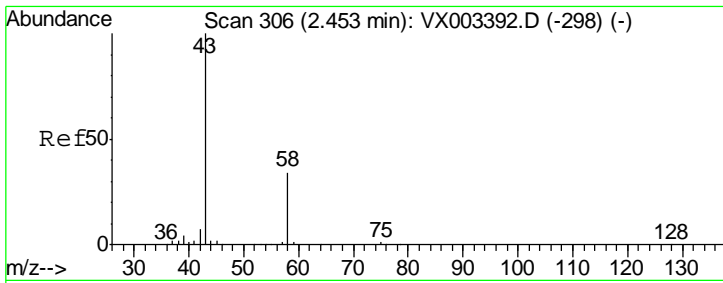
Tgt Ion: 59 Resp: 966
 Ion Ratio Lower Upper
 59 100
 57 20.9 8.2 12.2#



#13
 Acrolein
 Concen: 1.10 ug/l
 RT: 2.30 min Scan# 281
 Delta R.T. 0.00 min
 Lab File: VX003403.D
 Acq: 16 Jul 2018 21:26

Tgt Ion: 56 Resp: 375
 Ion Ratio Lower Upper
 56 100
 55 93.1 57.0 85.4#

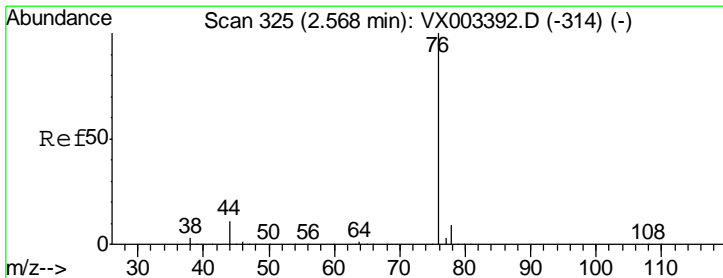
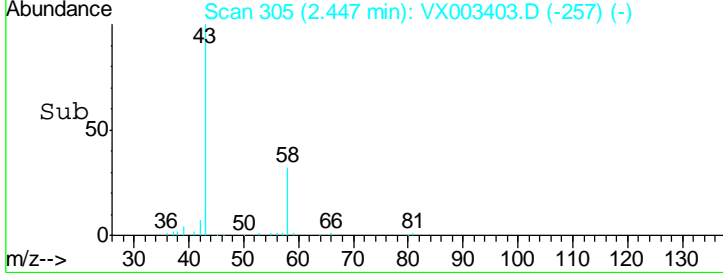
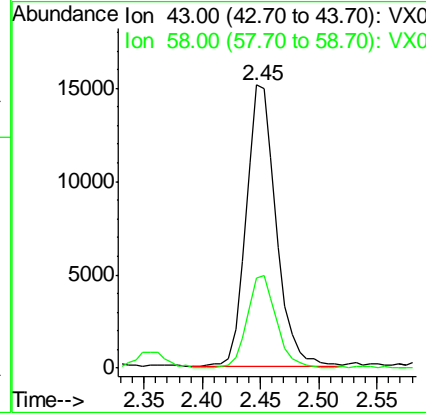
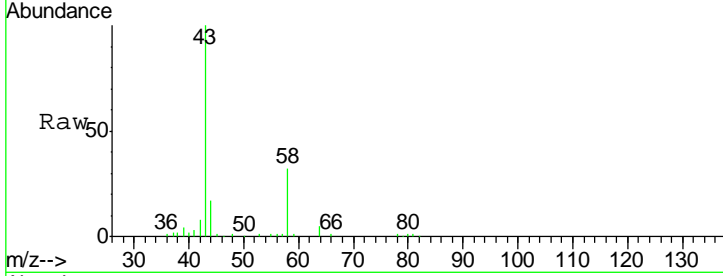




#16
 Acetone
 Concen: 20.63 ug/l
 RT: 2.45 min Scan# 305
 Delta R.T. -0.01 min
 Lab File: VX003403.D
 Acq: 16 Jul 2018 21:26

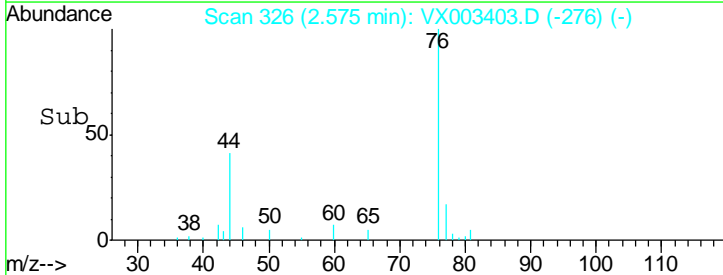
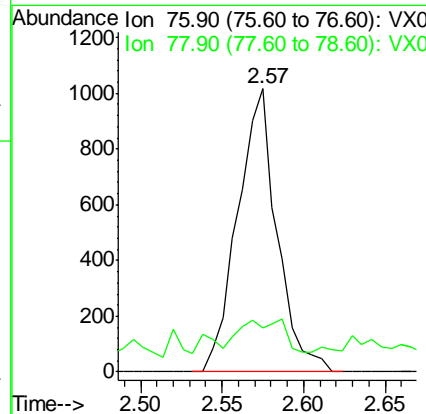
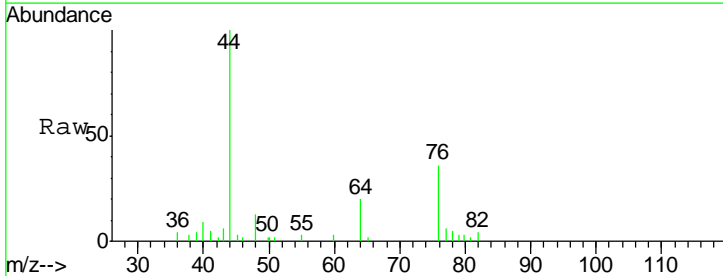
Instrument :
 MSVOA_X
ClientSampled :
 PB111123ZHE#11

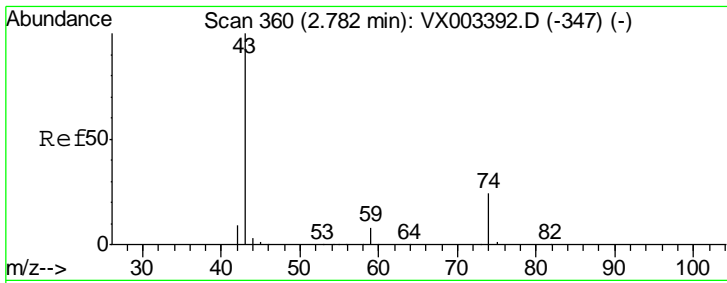
Tgt Ion	Resp	Lower	Upper
43	27075		
58	32.2	22.1	33.1



#17
 Carbon Disulfide
 Concen: 0.25 ug/l
 RT: 2.57 min Scan# 326
 Delta R.T. 0.01 min
 Lab File: VX003403.D
 Acq: 16 Jul 2018 21:26

Tgt Ion	Resp	Lower	Upper
76	1712		
78	9.1	6.9	10.3

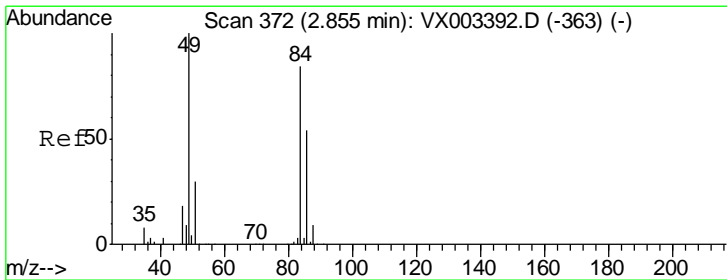
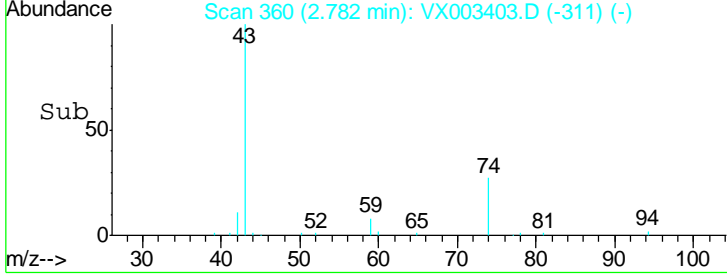
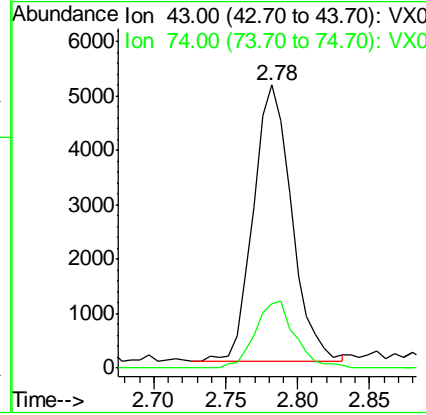
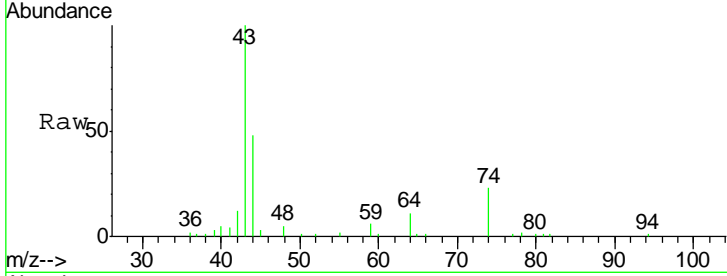




#18
 Methyl Acetate
 Concen: 2.18 ug/l
 RT: 2.78 min Scan# 360
 Delta R.T. 0.00 min
 Lab File: VX003403.D
 Acq: 16 Jul 2018 21:26

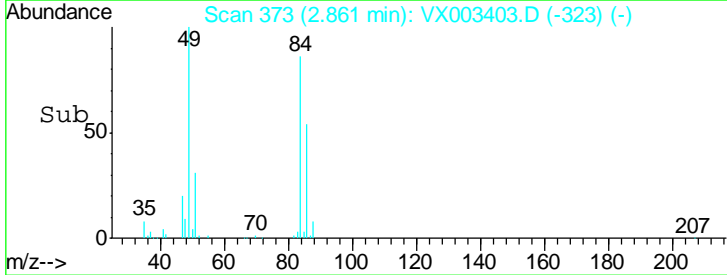
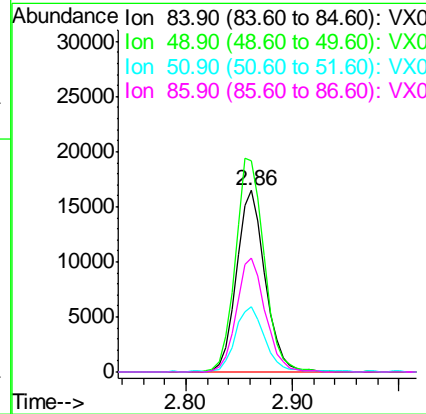
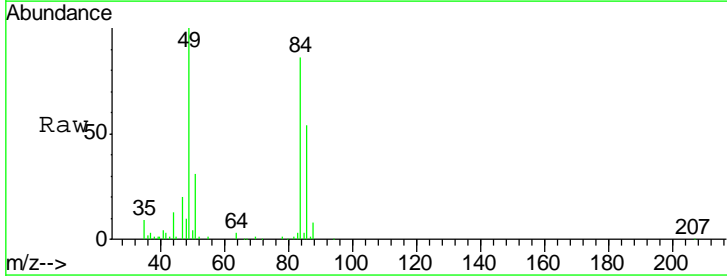
Instrument :
 MSVOA_X
 ClientSampleId :
 PB111123ZHE#11

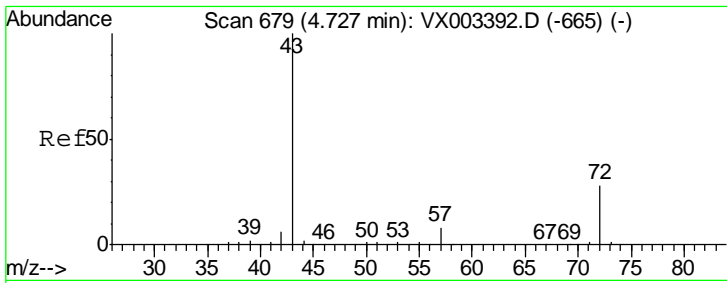
Tgt Ion	Resp	Lower	Upper
43	100		
74	25.1	16.7	25.1



#20
 Methylene Chloride
 Concen: 10.82 ug/l
 RT: 2.86 min Scan# 373
 Delta R.T. 0.01 min
 Lab File: VX003403.D
 Acq: 16 Jul 2018 21:26

Tgt Ion	Resp	Lower	Upper
84	100		
49	116.1	107.8	161.6
51	35.7	32.8	49.2
86	63.0	52.5	78.7

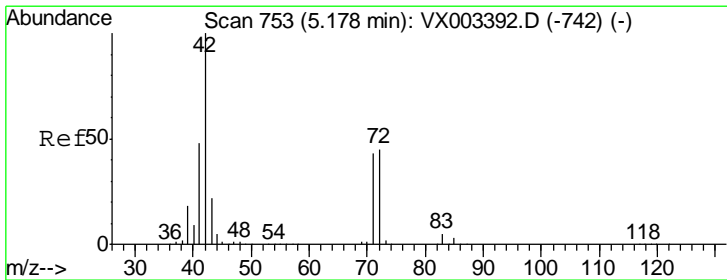
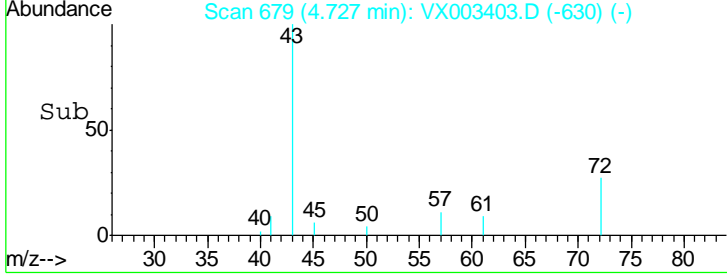
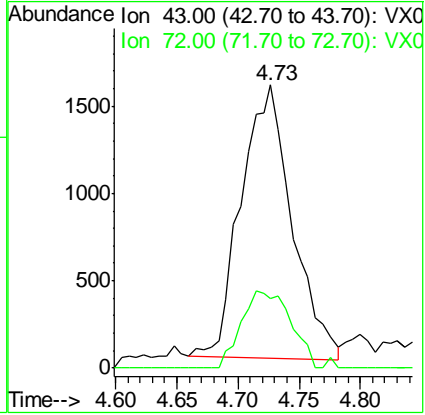
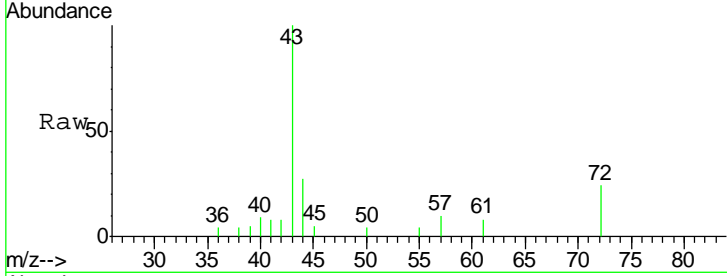




#25
 2-Butanone
 Concen: 2.21 ug/l
 RT: 4.73 min Scan# 679
 Delta R.T. 0.00 min
 Lab File: VX003403.D
 Acq: 16 Jul 2018 21:26

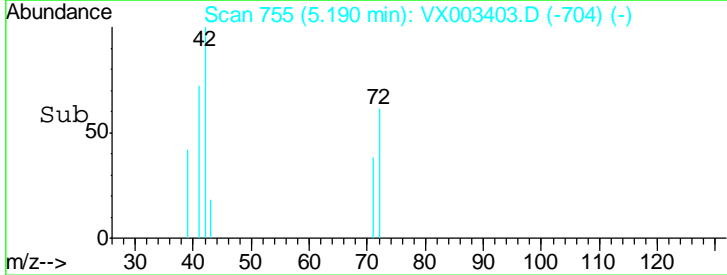
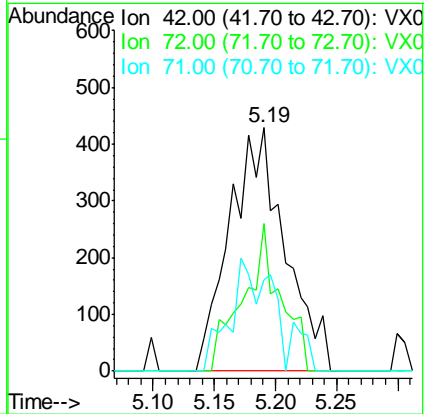
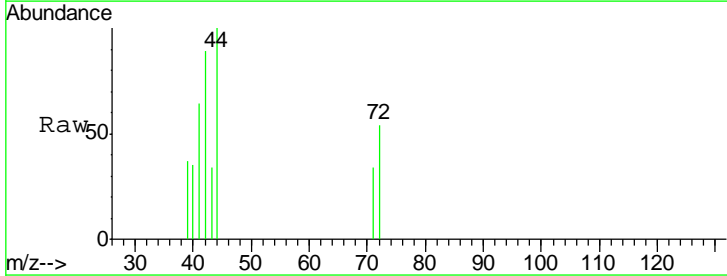
Instrument : MSVOA_X
 ClientSampled : PB111123ZHE#11

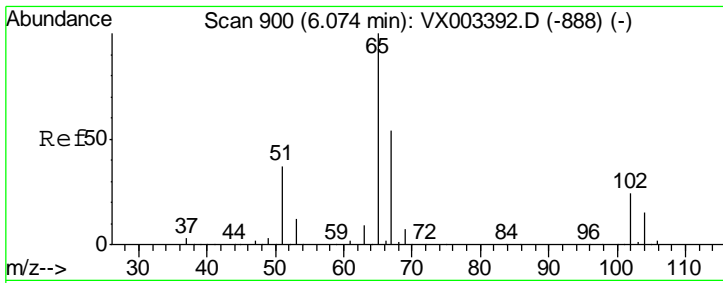
Tgt Ion	Resp	Lower	Upper
43	100		
72	25.5	18.5	27.7



#29
 Tetrahydrofuran
 Concen: 1.03 ug/l
 RT: 5.19 min Scan# 755
 Delta R.T. 0.01 min
 Lab File: VX003403.D
 Acq: 16 Jul 2018 21:26

Tgt Ion	Resp	Lower	Upper
42	100		
72	41.2	32.0	48.0
71	21.2	30.1	45.1#

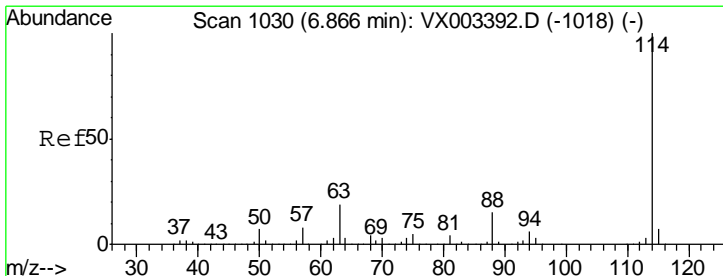
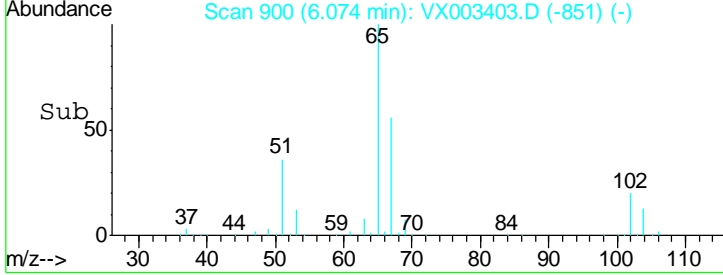
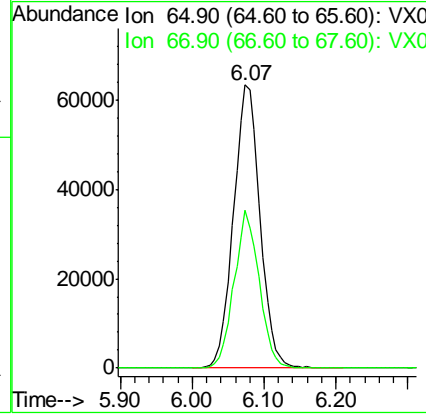
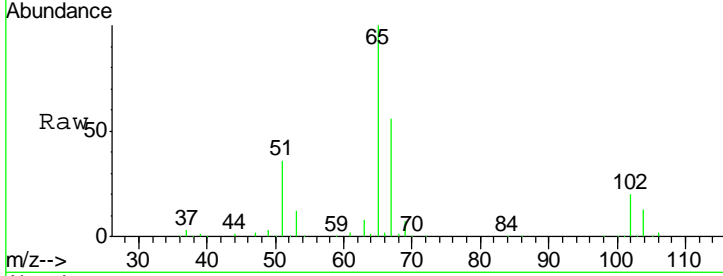




#33
 1,2-Dichloroethane-d4
 Concen: 51.43 ug/l
 RT: 6.07 min Scan# 900
 Delta R.T. 0.00 min
 Lab File: VX003403.D
 Acq: 16 Jul 2018 21:26

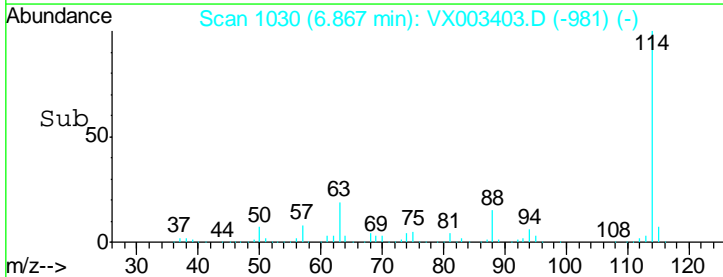
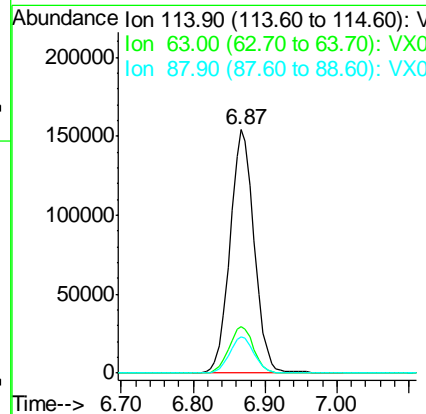
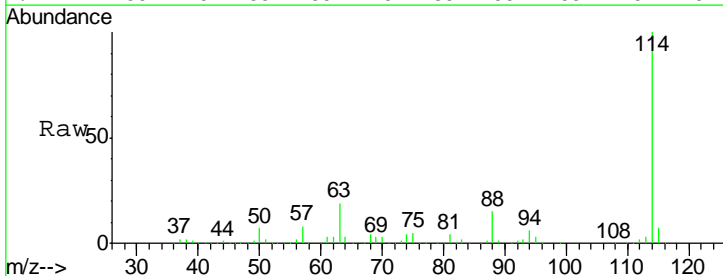
Instrument : MSVOA_X
 ClientSampled : PB111123ZHE#11

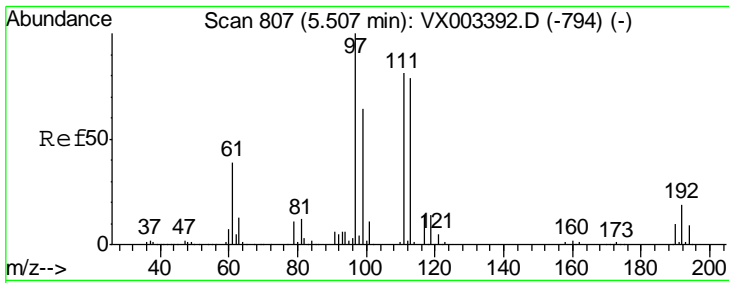
Tot Ion: 65 Resp: 162289
 Ion Ratio Lower Upper
 65 100
 67 52.8 0.0 102.6



#34
 1,4-Difluorobenzene
 Concen: 50.00 ug/l
 RT: 6.87 min Scan# 1030
 Delta R.T. 0.00 min
 Lab File: VX003403.D
 Acq: 16 Jul 2018 21:26

Tgt Ion: 114 Resp: 359868
 Ion Ratio Lower Upper
 114 100
 63 18.9 0.0 41.4
 88 15.1 0.0 30.0



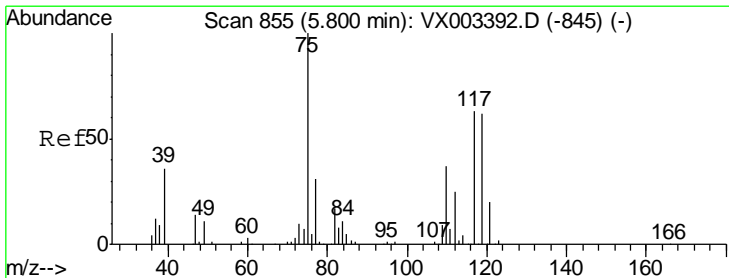
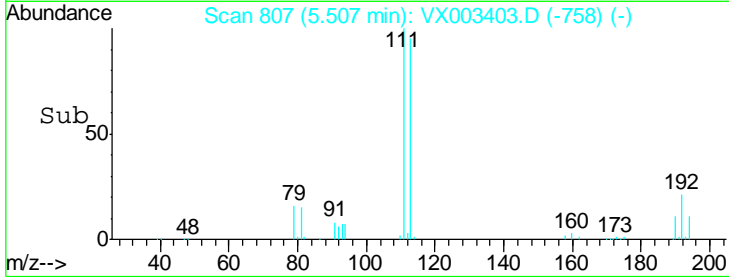
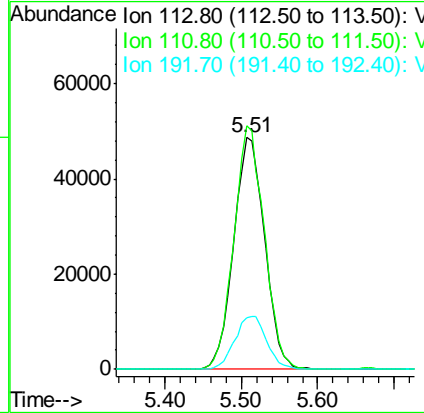
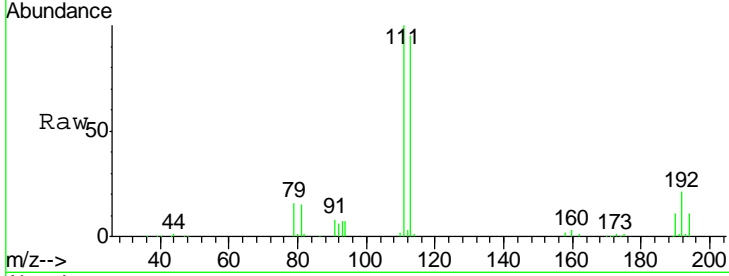


#35
 Dibromofluoromethane
 Concen: 46.93 ug/l
 RT: 5.51 min Scan# 807
 Delta R.T. 0.00 min
 Lab File: VX003403.D
 Acq: 16 Jul 2018 21:26

Instrument :
 MSVOA_X
 ClientSampled :
 PB111123ZHE#11

Tgt Ion:113 Resp: 136637

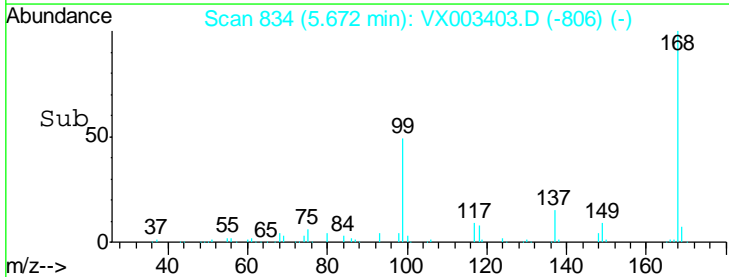
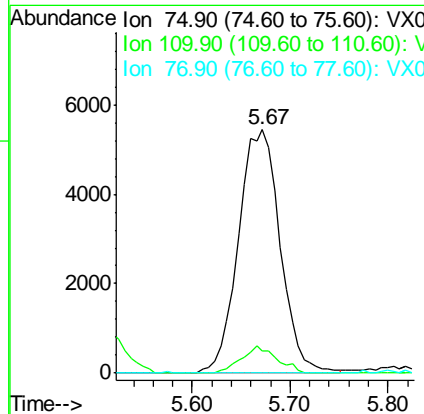
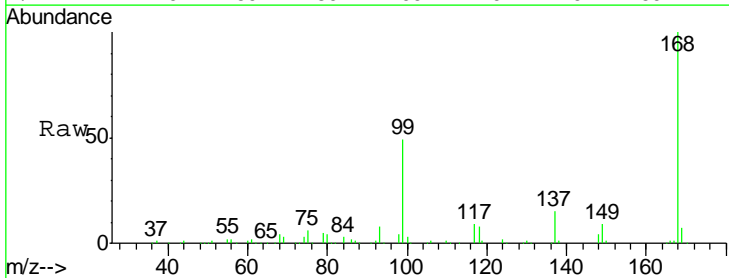
Ion	Ratio	Lower	Upper
113	100		
111	103.1	81.4	122.0
192	23.4	19.1	28.7

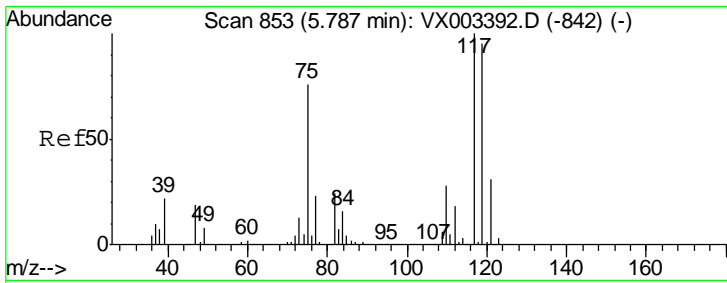


#36
 1,1-Dichloropropene
 Concen: 4.40 ug/l
 RT: 5.67 min Scan# 834
 Delta R.T. -0.13 min
 Lab File: VX003403.D
 Acq: 16 Jul 2018 21:26

Tgt Ion: 75 Resp: 16036

Ion	Ratio	Lower	Upper
75	100		
110	9.5	18.1	54.4#
77	0.0	24.3	36.5#

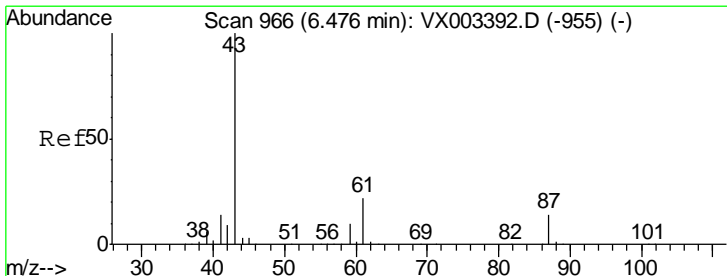
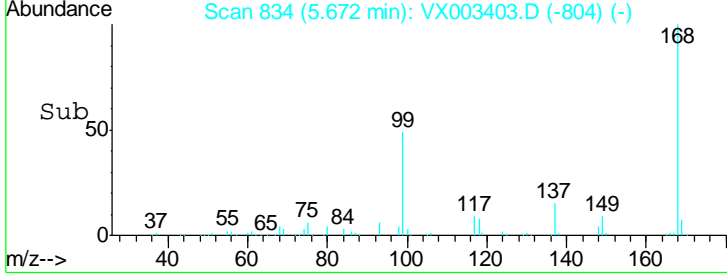
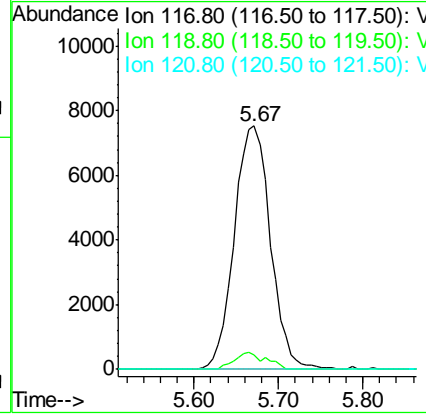
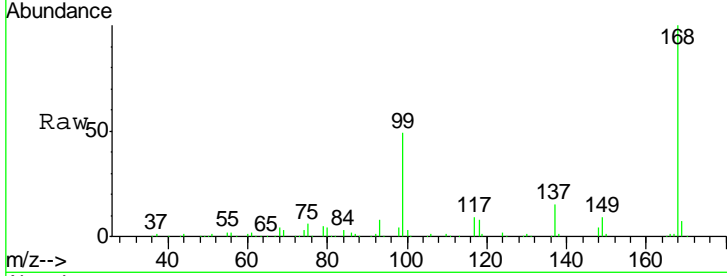




#38
 Carbon Tetrachloride
 Concen: 5.89 ug/l
 RT: 5.67 min Scan# 834
 Delta R.T. -0.12 min
 Lab File: VX003403.D
 Acq: 16 Jul 2018 21:26

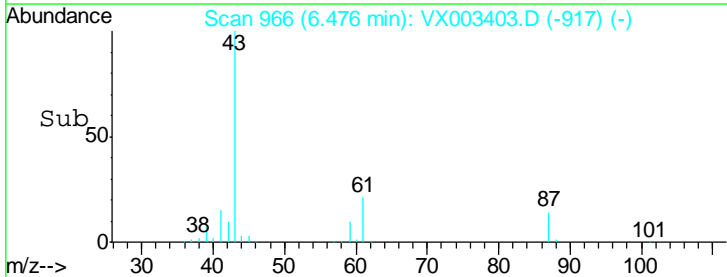
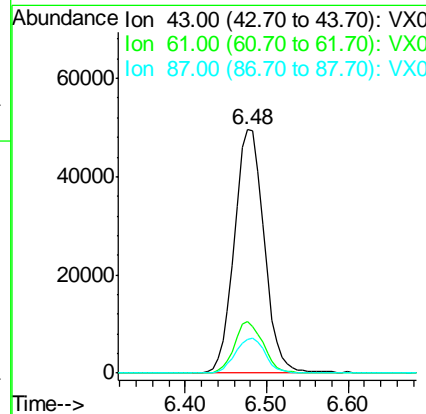
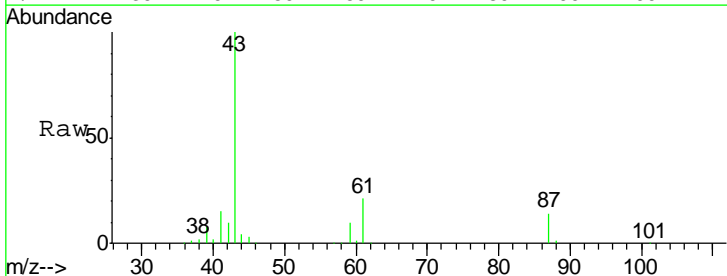
Instrument : MSVOA_X
 ClientSampleId : PB111123ZHE#11

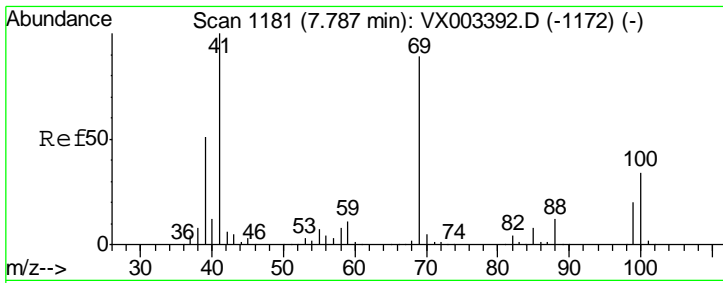
Tgt Ion	Resp	Lower	Upper
117	100		
119	5.8	77.4	116.0#
121	0.0	24.4	36.6#



#43
 Isopropyl Acetate
 Concen: 20.14 ug/l
 RT: 6.48 min Scan# 966
 Delta R.T. 0.00 min
 Lab File: VX003403.D
 Acq: 16 Jul 2018 21:26

Tgt Ion	Resp	Lower	Upper
43	100		
61	20.4	14.4	21.6
87	14.3	9.5	14.3

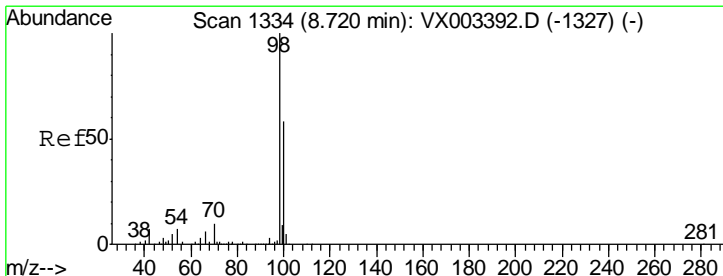
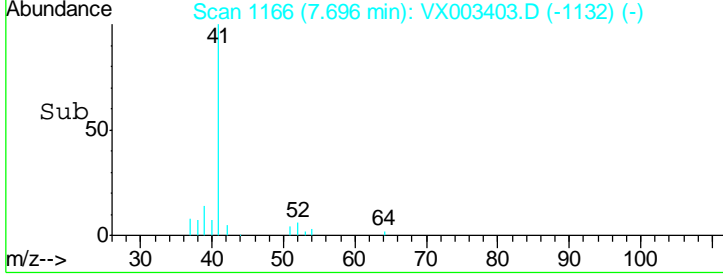
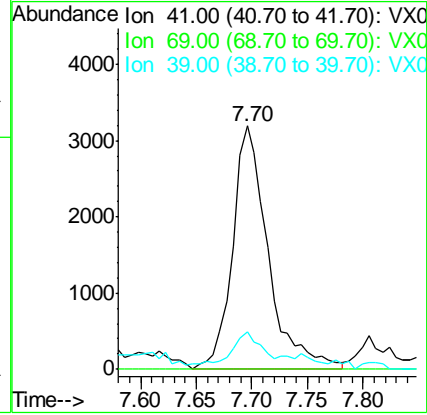
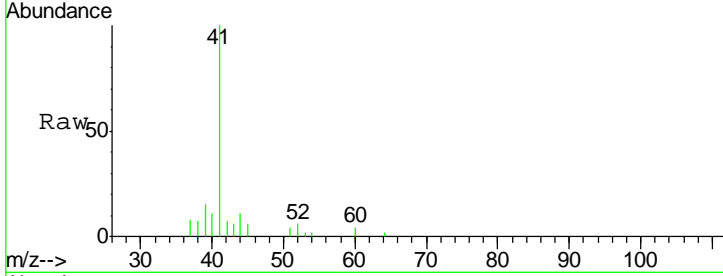




#48
 Methyl methacrylate
 Concen: 2.23 ug/l
 RT: 7.70 min Scan# 1166
 Delta R.T. -0.09 min
 Lab File: VX003403.D
 Acq: 16 Jul 2018 21:26

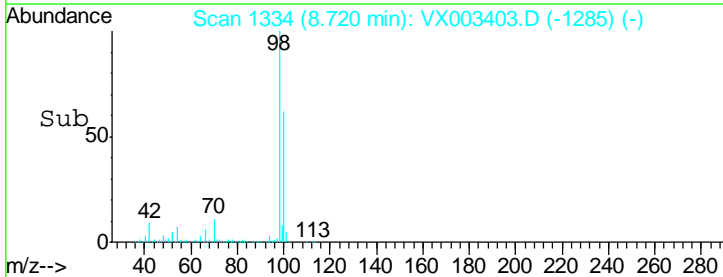
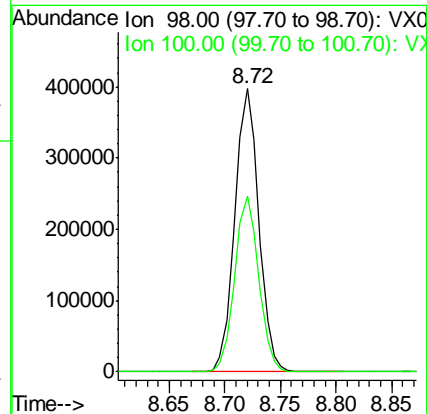
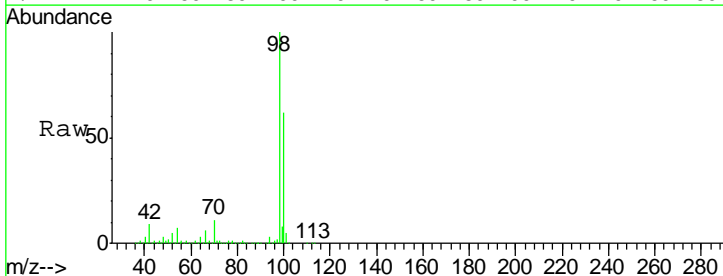
Instrument :
 MSVOA_X
ClientSampled :
 PB111123ZHE#11

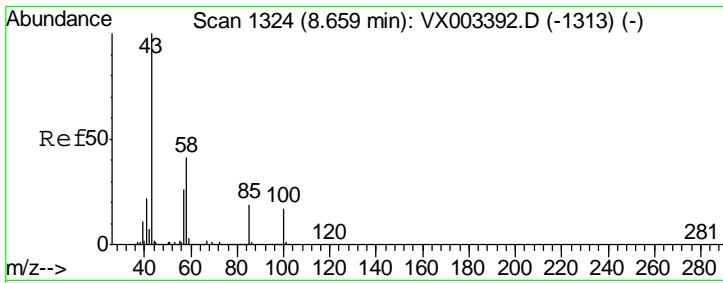
Tgt Ion	Resp	Lower	Upper
41	100		
69	0.0	59.1	88.7#
39	10.7	48.9	73.3#



#50
 Toluene-d8
 Concen: 55.25 ug/l
 RT: 8.72 min Scan# 1334
 Delta R.T. 0.00 min
 Lab File: VX003403.D
 Acq: 16 Jul 2018 21:26

Tgt Ion	Resp	Lower	Upper
98	100		
100	62.0	50.9	76.3

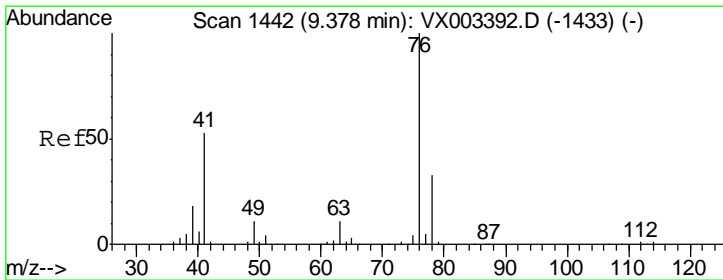
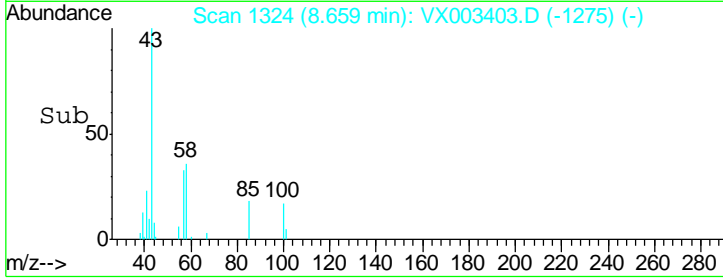
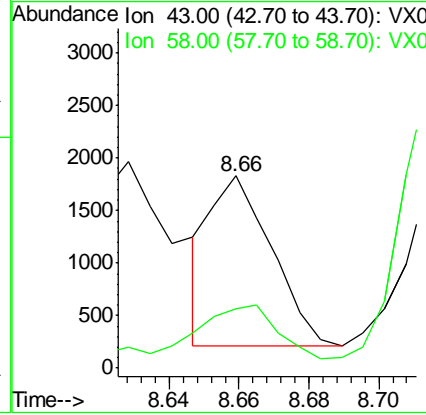
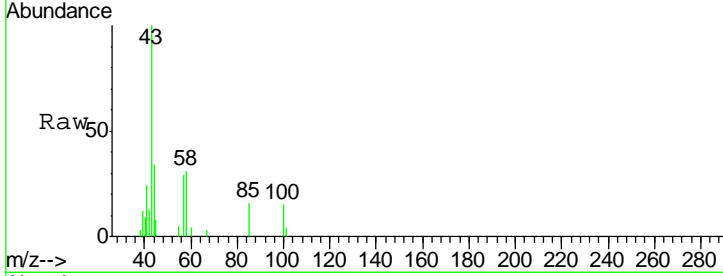




#51
 4-Methyl-2-Pentanone
 Concen: 0.48 ug/l
 RT: 8.66 min Scan# 1324
 Delta R.T. 0.00 min
 Lab File: VX003403.D
 Acq: 16 Jul 2018 21:26

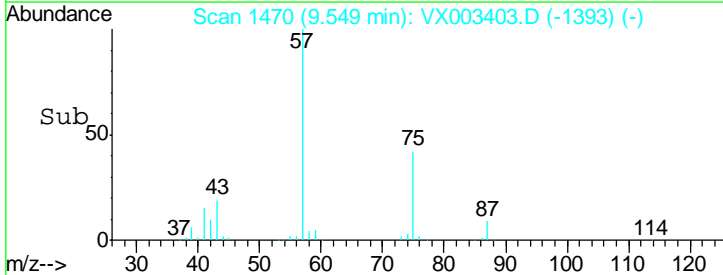
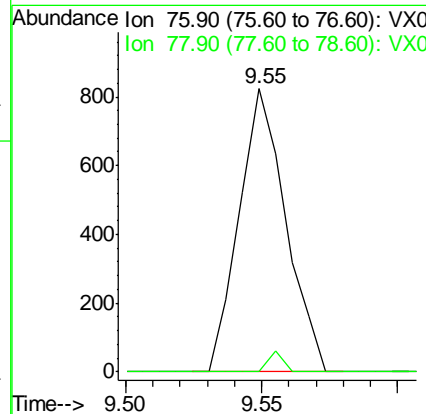
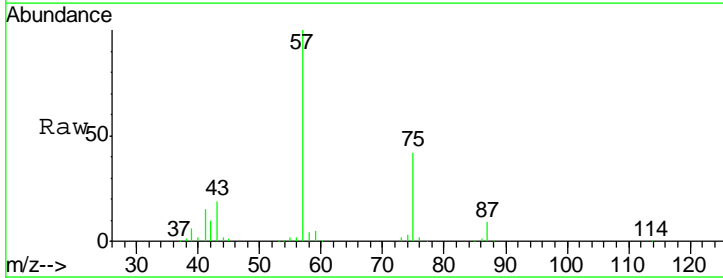
Instrument : MSVOA_X
 ClientSampled : PB111123ZHE#11

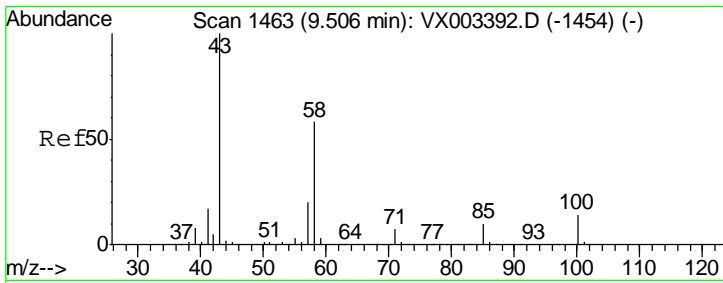
Tgt Ion	Resp	Lower	Upper
43	100		
58	63.4	28.6	42.8#



#57
 1,3-Dichloropropane
 Concen: 0.21 ug/l
 RT: 9.55 min Scan# 1470
 Delta R.T. 0.17 min
 Lab File: VX003403.D
 Acq: 16 Jul 2018 21:26

Tgt Ion	Resp	Lower	Upper
76	100		
78	2.3	25.8	38.6#

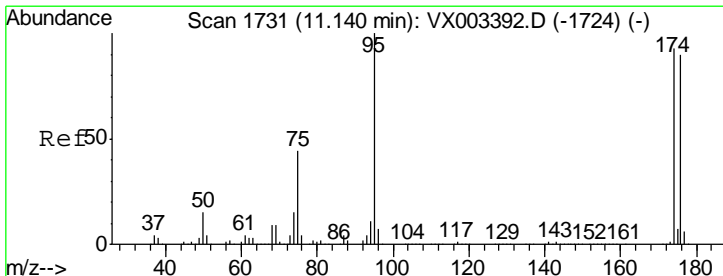
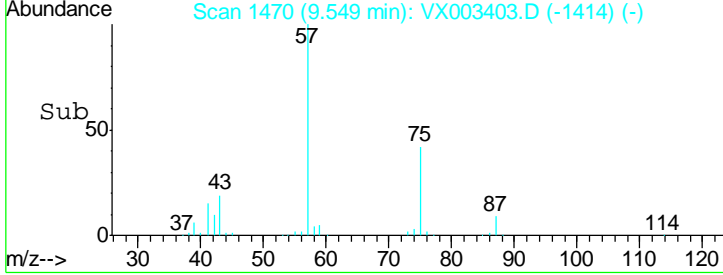
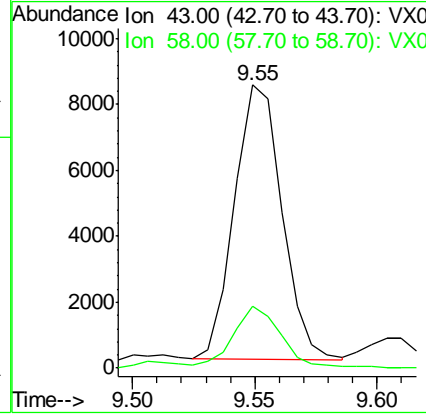
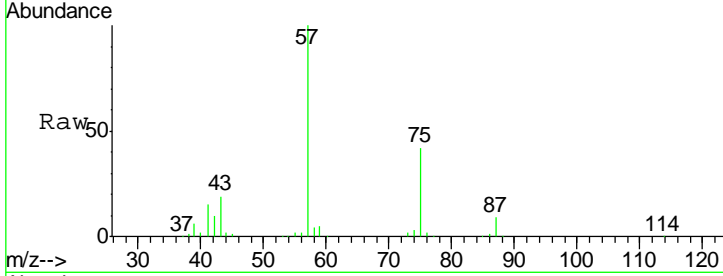




#59
 2-Hexanone
 Concen: 3.60 ug/l
 RT: 9.55 min Scan# 1470
 Delta R.T. 0.04 min
 Lab File: VX003403.D
 Acq: 16 Jul 2018 21:26

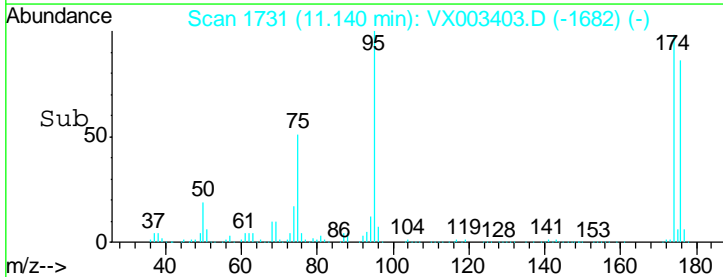
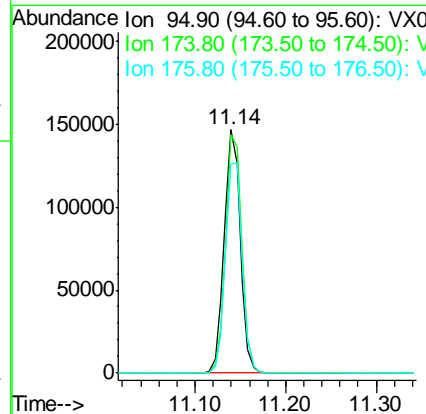
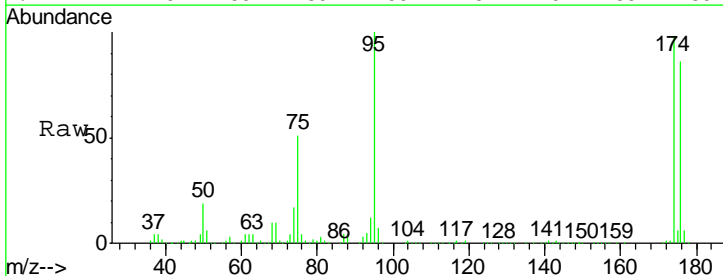
Instrument : MSVOA_X
 ClientSampled : PB111123ZHE#11

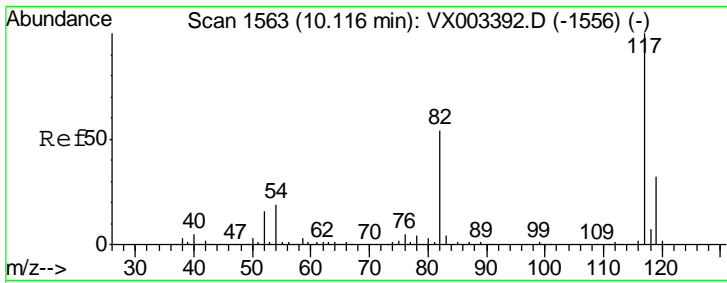
Tgt Ion	Resp	Lower	Upper
43	100		
58	23.0	24.6	73.6#



#62
 4-Bromofluorobenzene
 Concen: 47.58 ug/l
 RT: 11.14 min Scan# 1731
 Delta R.T. 0.00 min
 Lab File: VX003403.D
 Acq: 16 Jul 2018 21:26

Tgt Ion	Resp	Lower	Upper
95	100		
174	99.0	0.0	187.4
176	90.1	0.0	181.0



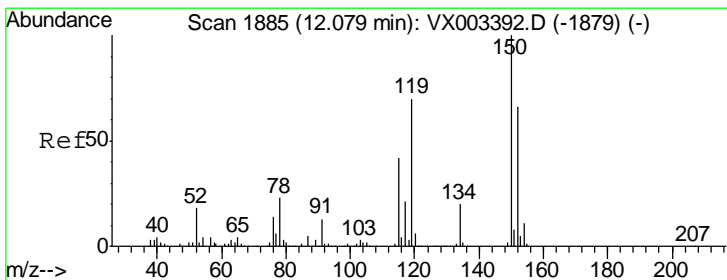
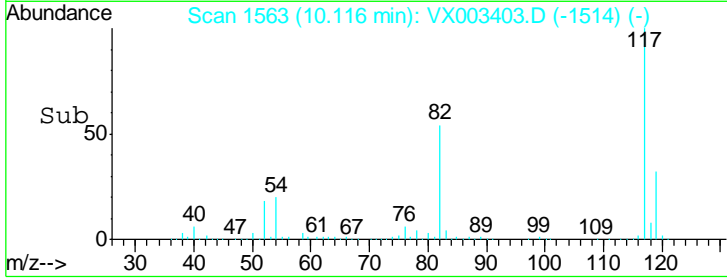
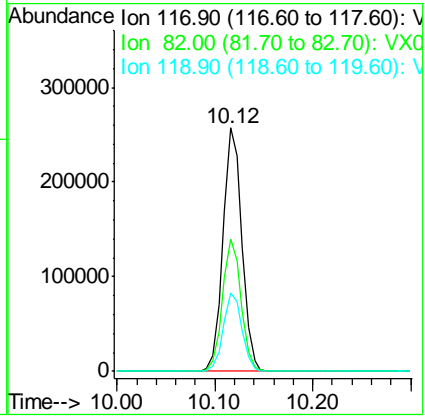
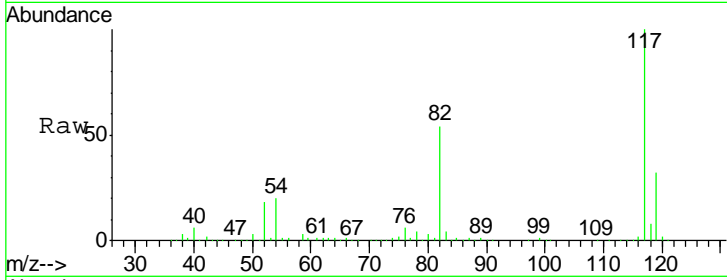


#63
 Chlorobenzene-d5
 Concen: 50.00 ug/l
 RT: 10.12 min Scan# 1563
 Delta R.T. 0.00 min
 Lab File: VX003403.D
 Acq: 16 Jul 2018 21:26

Instrument : MSVOA_X
 ClientSampled : PB111123ZHE#11

Tgt Ion: 117 Resp: 343718

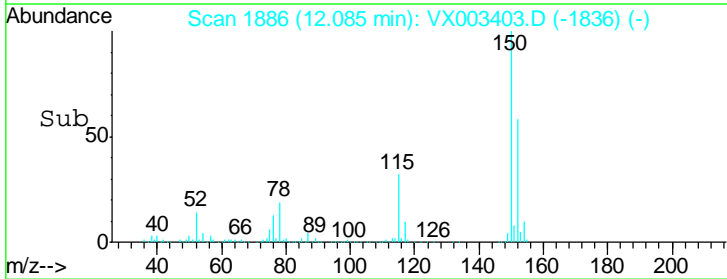
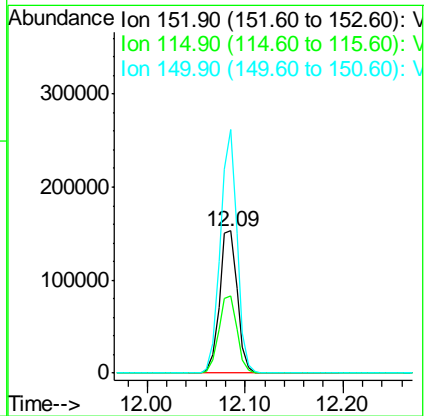
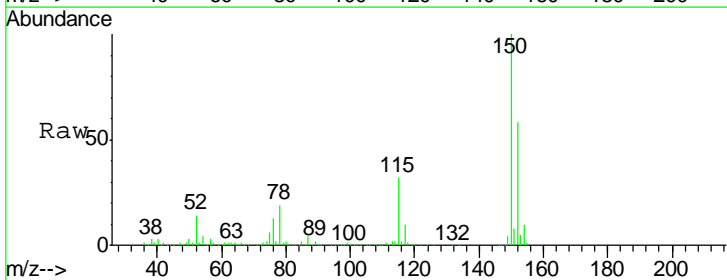
Ion	Ratio	Lower	Upper
117	100		
82	54.2	45.0	67.4
119	32.4	25.8	38.6

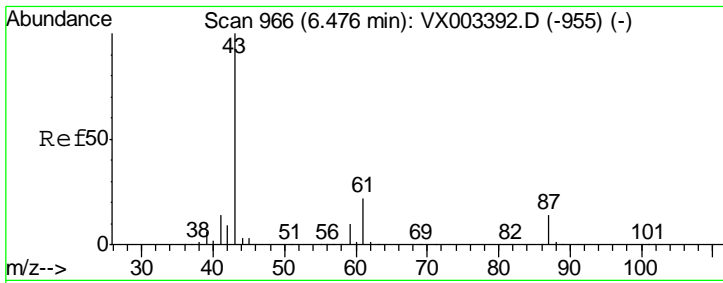


#72
 1,4-Dichlorobenzene-d4
 Concen: 50.00 ug/l
 RT: 12.09 min Scan# 1886
 Delta R.T. 0.01 min
 Lab File: VX003403.D
 Acq: 16 Jul 2018 21:26

Tgt Ion: 152 Resp: 191963

Ion	Ratio	Lower	Upper
152	100		
115	55.6	40.1	120.2
150	161.5	0.0	347.2

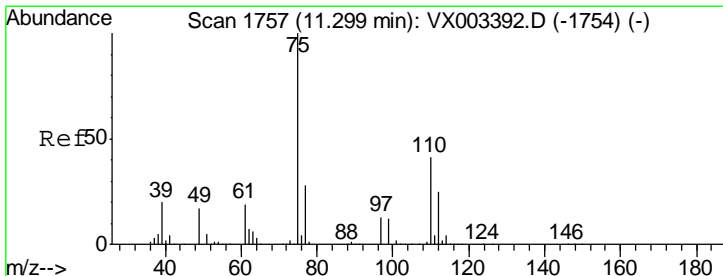
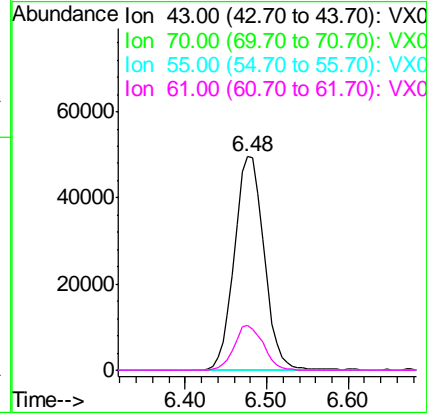
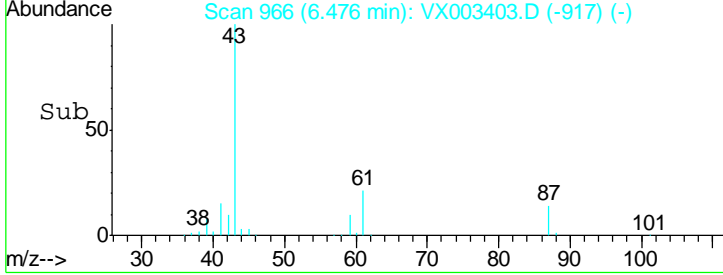
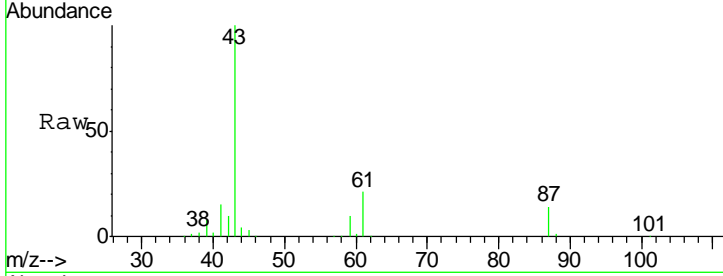




#74
 N-amyl acetate
 Concen: 21.12 ug/l
 RT: 6.48 min Scan# 966
 Delta R.T. 0.00 min
 Lab File: VX003403.D
 Acq: 16 Jul 2018 21:26

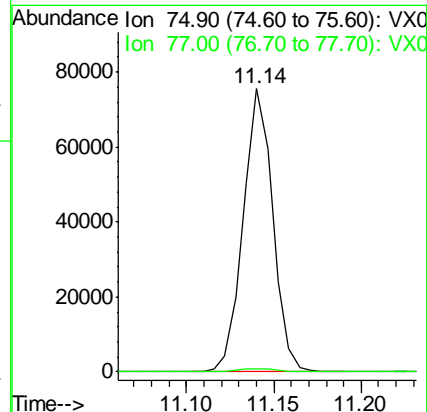
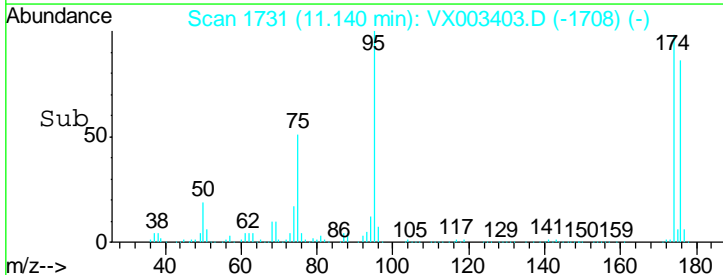
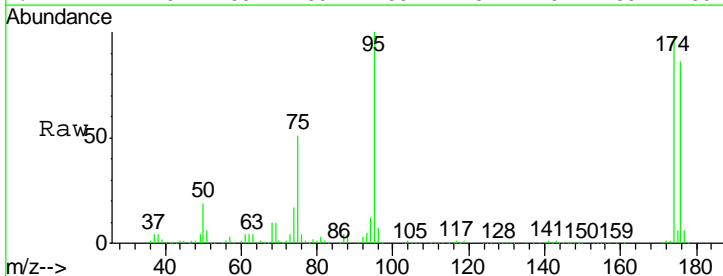
Instrument :
 MSVOA_X
ClientSampled :
 PB111123ZHE#11

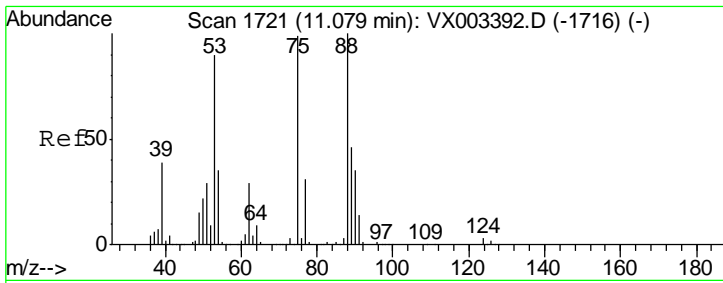
Tgt Ion	Resp	Lower	Upper
43	124853		
70	0.0	0.0	0.0
55	0.0	0.0	0.0#
61	20.4	14.4	21.6



#76
 1,2,3-Trichloropropane
 Concen: 25.56 ug/l
 RT: 11.14 min Scan# 1731
 Delta R.T. -0.16 min
 Lab File: VX003403.D
 Acq: 16 Jul 2018 21:26

Tgt Ion	Resp	Lower	Upper
75	88821		
77	1.3	22.8	68.3#

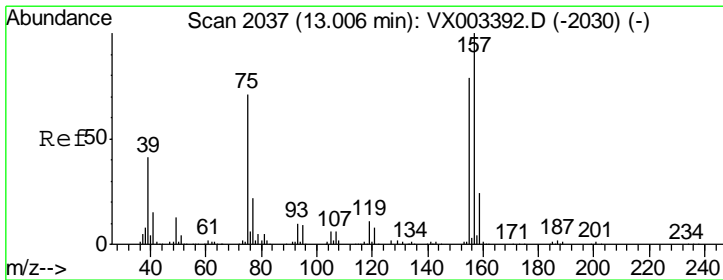
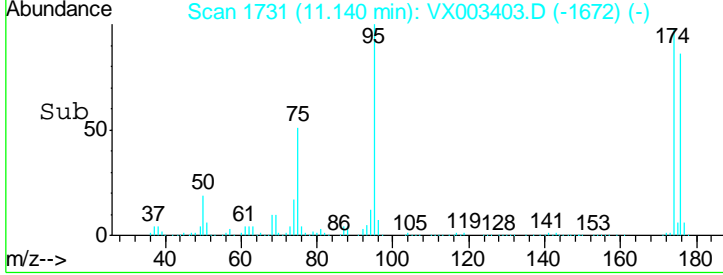
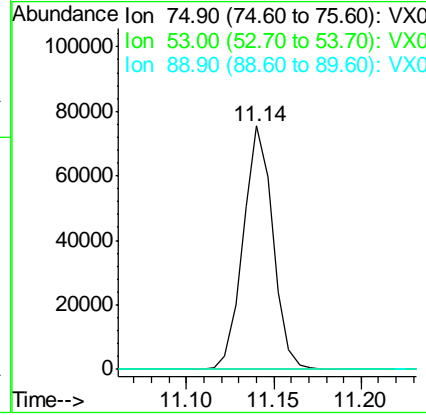
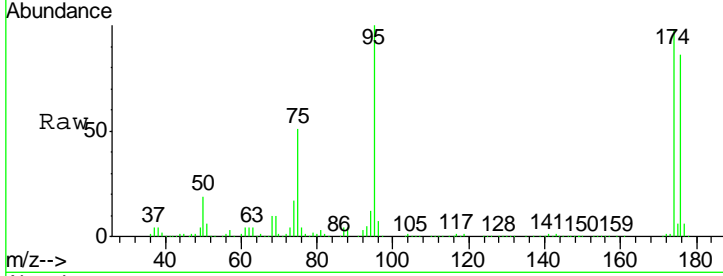




#81
 trans-1,4-Dichloro-2-butene
 Concen: 83.03 ug/l
 RT: 11.14 min Scan# 1731
 Delta R.T. 0.06 min
 Lab File: VX003403.D
 Acq: 16 Jul 2018 21:26

Instrument : MSVOA_X
 ClientSampled : PB111123ZHE#11

Tgt Ion	Resp	Lower	Upper
75	100		
53	0.2	86.8	130.2#
89	0.0	38.2	57.2#



#92
 1,2-Dibromo-3-Chloropropane
 Concen: 0.27 ug/l
 RT: 12.99 min Scan# 2034
 Delta R.T. -0.02 min
 Lab File: VX003403.D
 Acq: 16 Jul 2018 21:26

Tgt Ion	Resp	Lower	Upper
75	100		
155	0.0	45.8	137.4#
157	0.0	60.1	180.3#

